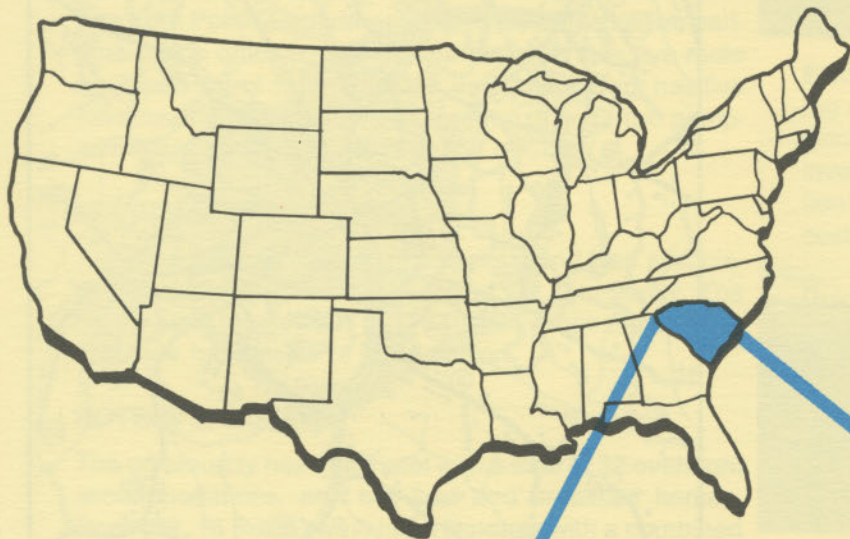


D4925
2.456
1985/12
Copy 1

YORK

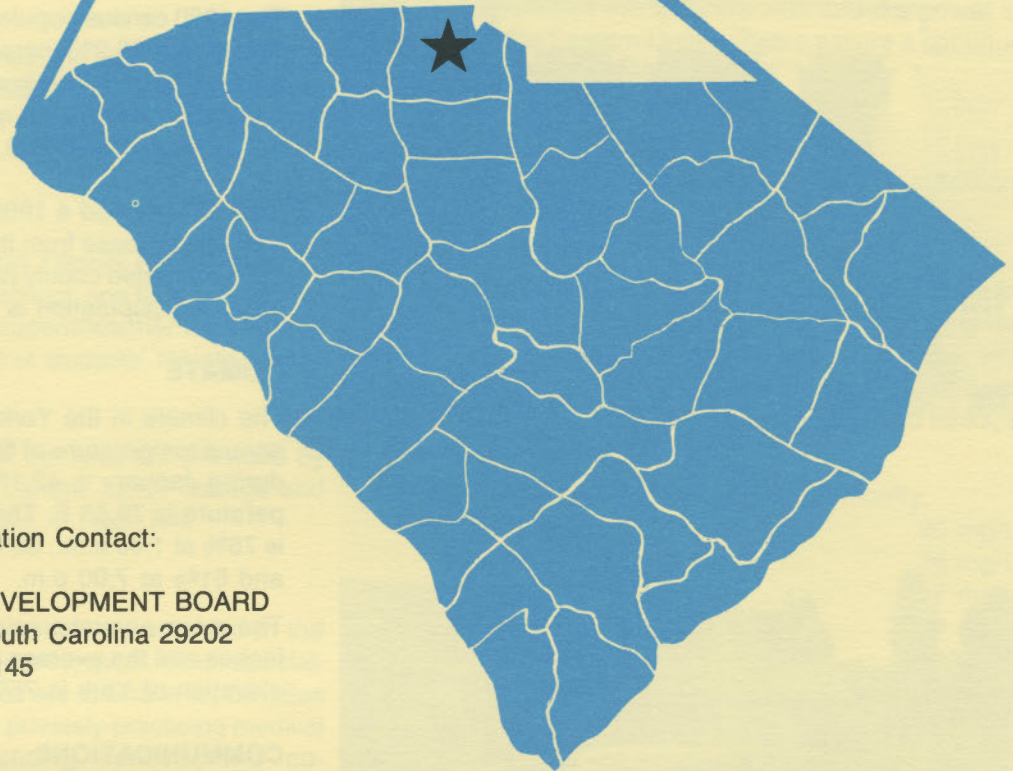
south carolina



S. C. STATE LIBRARY

MAR 14 1986

STATE DOCUMENTS

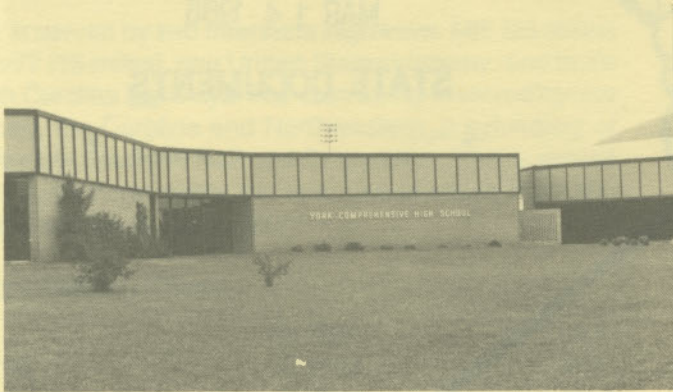


For Additional Information Contact:

SOUTH CAROLINA STATE DEVELOPMENT BOARD
P.O. Box 927, Columbia, South Carolina 29202
(803) 758-3145



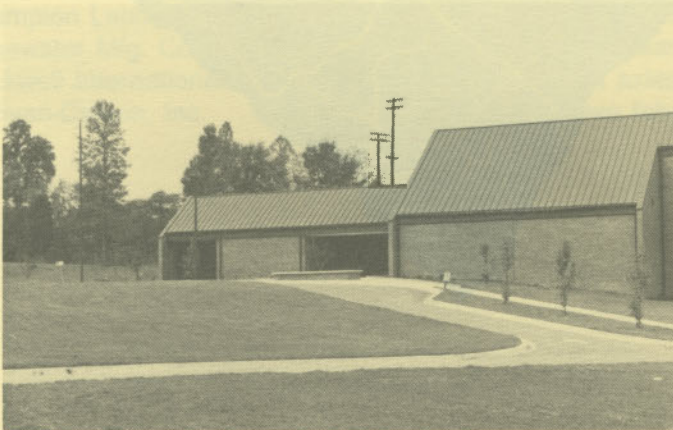
York City Hall



York Comprehensive High School



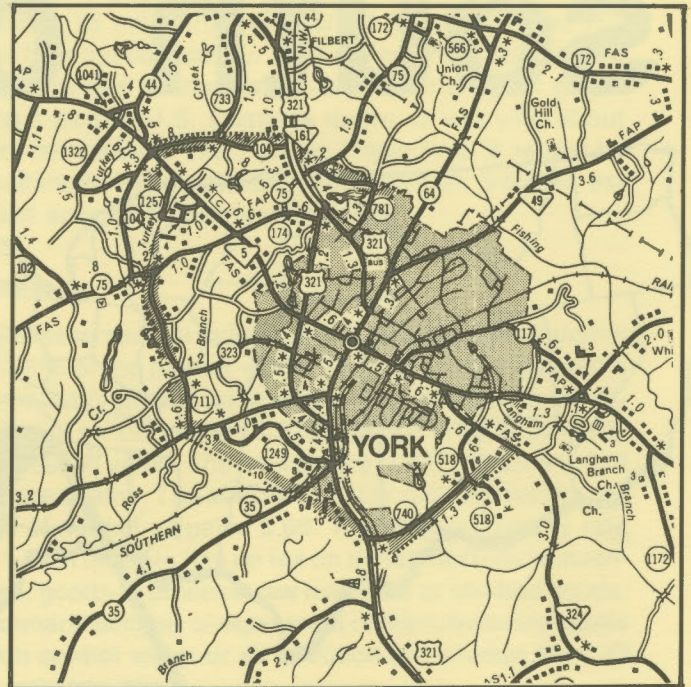
York County Courthouse



York Recreation Center

LOCATION

As depicted on the cover, York, seat of York County, is in the northern section of the state. Charleston, South Carolina's busiest port, is 187 miles southeast. Columbia is 77 miles south and Greenville is 79 miles west. York is 231 miles northeast of Atlanta; 639 miles south of New York; and 2,754 miles east of San Francisco.



POPULATION

The 1980 census population of the city of York was 6,412. This was a 26.2% increase from the 1970 population of 5,081. The 1982 estimated population was 6,651. The population within a 15-mile radius is 103,634 and within a 30-mile radius is 689,831.

York County had a 1980 census population of 106,720, a 25.2% increase from the 1970 population of 85,216. The 1985 estimated county population is 116,300 and the 2010 projected population is 166,900.

CLIMATE

The climate in the York area is temperate with a mean annual temperature of 60.5° F. The average temperature during January is 42.1° F, while the average July temperature is 78.5° F. The average relative humidity daily is 76% at 1:00 a.m.; 83% at 7:00 a.m.; 54% at 1:00 p.m.; and 61% at 7:00 p.m.

The mean annual precipitation in the York area is 42.72 inches and the average growing season is 220 days. The elevation of York is 758 feet above sea level.

COMMUNICATIONS

The weekly *Yorkville Enquirer* is published in the community and four dailies circulate in the area. Broadcast coverage for the community is provided by radio stations WDZK-FM and WBZK-AM. Television reception in the community is available from eight stations, representing the three major networks. Telephone service in the com-

munity is provided by Southern Bell of BellSouth Corporation.



GOVERNMENT

The community has a council-manager form of municipal government. The six city council members and the mayor are elected for two-year terms. The county has a council-manager form of government. The seven county council members are elected for two-year terms.

POLICE AND FIRE

The York Police Department has 18 full-time and two part-time police officers. The department operates five radio equipped patrol cars. The York Fire Department has five full-time and 36 volunteer firemen who operate two pump-trucks. York's insurance rating is Class 6.

FINANCIAL INSTITUTIONS

York has three banks and one savings and loan association to serve the financial needs of the community. The banks have total assets of \$1.0 billion, while the savings and loan has assets of \$168 million.

HOTELS & MOTELS

The community has one motel with a total of 32 overnight accommodations, and two bed and breakfast homes. Rock Hill, 16 miles away, has 10 motels with a combined total of 675 accommodations.

CHURCHES

York has 36 Protestant churches and one Catholic church located in the city and surrounding area. Synagogues are located in Charlotte, 32 miles away, and in Gastonia, 22 miles away.

EDUCATION

York, which is included in York District #1, has two elementary schools; one middle school; one high school; and one vocational school. The student/teacher ratio is 17.9 to 1, with 180 teachers and 3,214 students. Private schooling is available in the area.

Higher education facilities for the area are provided by the York Technical College, Clinton Junior College and Winthrop College — all located in Rock Hill.

MEDICAL SERVICES

Medical services for the community are provided in the city by the 51-bed Divine Saviour Hospital. Other specialized medical treatment facilities are in Charlotte, 32 miles away. The community has six privately-practicing medical doctors, four privately-practicing dentists, two optometrists, and one surgeon.

RECREATION AND CIVIC FACILITIES

York has a well-rounded recreation program, supervised by a full-time recreation director. Several lighted ball fields are used for football, baseball, softball and soccer. A large

recreation center and two schools provide space for exercise classes, basketball, volleyball, and tennis. Public and private tennis courts meet tournament specifications. Spring Lake Country Club offers members and guests a championship caliber 18-hole golf course, driving range, tennis courts and swimming pool. A public golf course is a 20-minute drive from York. Lake Wylie, 10 miles away, offers public boat landings, fishing, camping and water sports recreation facilities. The Tar Sand Hunting Preserve is located eight miles away. Cultural presentations are available at Rock Hill, 16 miles away.

POWER

Electric power is available to the community and surrounding areas from Duke Power Company and York Electric Cooperative. Duke Power, the nation's eighth-largest investor-owned operating electric utility, provides installation of service to industrial customers at no cost to the customer in most cases.

Duke Power Company representatives are available to assist industrial prospects at no cost or obligation in analyzing their electricity needs.

York Electric Cooperative obtains its power supply from low-cost hydro electric facilities and Saluda River Electric Cooperative. The Cooperatives in the northwest portion of the state through Saluda River Electric Cooperative have arranged for a reliable competitively-priced power supply for the present and future. High voltage interconnections between the Cooperatives and the power supply grid of the Eastern United States assure a continuous source of reliable electric power.

FUELS

Natural gas is supplied by York County Gas Authority.

WATER

The community obtains its municipal water supply from Lake Caldwell. The system is capable of supplying water at a maximum rate of 2,400,000 gallons per day, with a daily demand of 700,000 gallons per day. Treated water storage consists of 850,000 gallons in elevated tanks, and one 300,000-gallon clear well.

Analysis of water supplied in the community:

Total solids	80 mg/L
Alkalinity	36 mg/L
Calcium	7 mg/L
Hardness	30 mg/L
Iron	.24 mg/L
pH	6.8

SEWER

York uses an aerated plant with an accentuated base sludge with a daily capacity of 1.5 million gallons of wastewater. The average daily flow is 1.1 million gallons.

LABOR

Because labor information may change in this area, a cur-

rent labor availability report prepared and kept up to date by the S. C. State Development Board will be furnished to prospective manufacturers at their request. The comprehensive report will include sources of recruitable labor, labor force characteristics, work force skill levels, earnings data and other pertinent information. The S. C. State Board for Technical and Comprehensive Education has the resources to recruit and train workers in accordance with a company's entry criteria. This training is at little or no cost to the employer. A lead-time schedule is developed to coordinate recruiting, testing, selecting, and training. This assures that persons will be able to move from training to their respective jobs at the time the plant is ready for initial production.

TRANSPORTATION

York is served by two interstate highways, I-85 (25 miles) and I-77 (15 miles), one United States highway, and three South Carolina highways. The community is served by one railroad, the Carolina and Northwestern, a subsidiary of the Norfolk Southern Railroad Corporation. York is served by 41 authorized motor carriers, two of which have terminal facilities in Rock Hill.

Freight Delivery Times:

To:	By Rail:	By Truck:
Atlanta	2 days	1 day
Baltimore	3 days	3 days
Chicago	4 days	3 days
Houston	6 days	3 days
New York	4 days	4 days
St. Louis	4 days	4 days
San Francisco	6 days	5 days

Charlotte's Douglas International Airport, 32 miles away, offers regularly scheduled commercial airline service on Wheeler, Trans Southern, TWA, Sunbird, American, Delta, Eastern, Piedmont, Ozark, United, Pan Am, US Air, Bankair and PEOPLExpress. Private aircraft use Rock

Hill's Bryant Field, 12 miles away, which has a 5,000-foot paved and lighted runway. Services available at the Rock Hill Airport are Jet A and 100LL fuel, RBn, major airframe and major powerplant repairs, Unicom and Vortac.

FOREIGN TRADE ZONE

A Foreign Trade Zone is located in Summerville, South Carolina, 25 miles from the port of Charleston and 162 miles from the community. The Foreign Trade Zone allows manufacturers to store, manufacture, or process goods without paying U.S. Customs duties or worrying about quota compliance. This Foreign Trade Zone is served by a multimode transportation network which provides excellent accessibility to market areas.

TAXES

The assessment on industrial property in South Carolina is 10.5% of the market value. New industry is granted a five-year moratorium on general county taxes (with the exception of school taxes). The city tax rate is \$6.30 per \$100 of assessed value. The county rate is \$17.08 per \$100 of assessed value. The effective city tax rate (tax liability per \$100 of market value) is \$.66. The effective county rate is \$1.79. The state has no tax on a manufacturer's inventories, goods-in-process, raw materials or finished goods. Treatment facilities or equipment of manufacturing plants which control water or air pollution are exempt from all property taxation.

INDUSTRIAL SITES

Industrial sites are available in York with a wide range of geographic and topographic features. In all probability, a site that will meet the needs of most industries' requirements has been identified, catalogued, and entered into the State Development Board's Computerized Site Selection System. Detailed site information is available and will be furnished upon request.

MAJOR EMPLOYERS

Name	Product or Service	Employees
Cannon Mills (2 plants)	Terry towels	762
Champion Laboratories, Inc.	Oil & air filters	240
Edgewater Mfg. Co.	Rolled seamless steel rings	78
Rockwell International	Truck axles	173
Sullivan-Carson, Inc.	Woven fabrics	101