

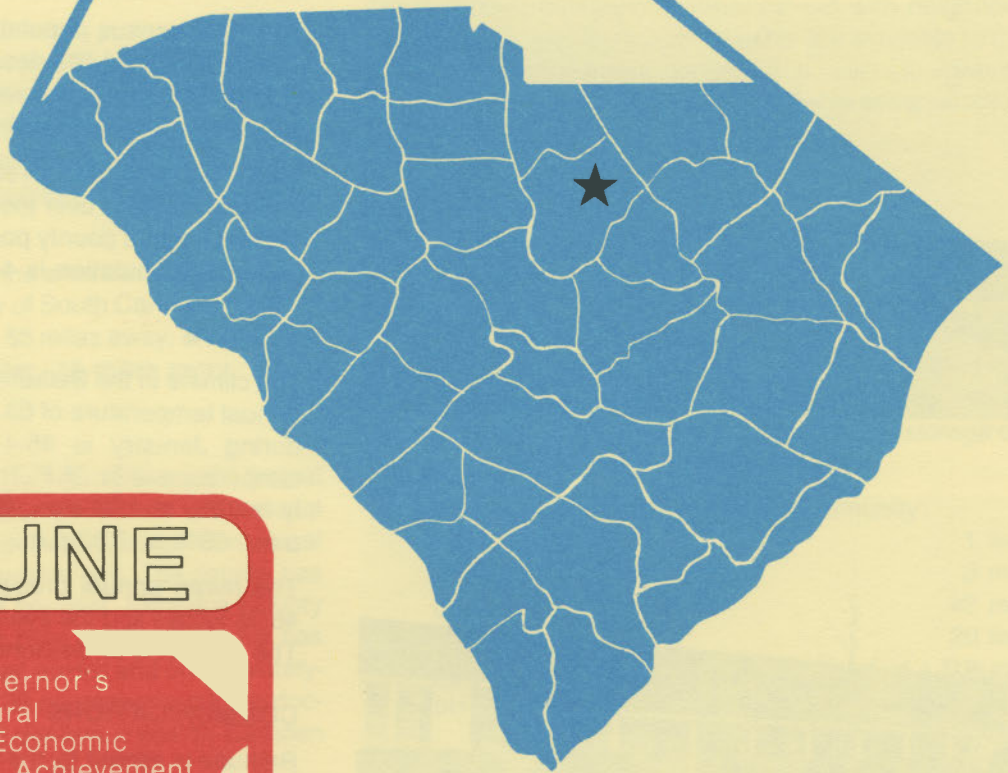
D49a5
a.B37
1985
Copy 1

BETHUNE

south carolina



S. C. STATE LIBRARY
OCT 3 1 1985
STATE DOCUMENTS



BETHUNE
IS
A GREAT TOWN

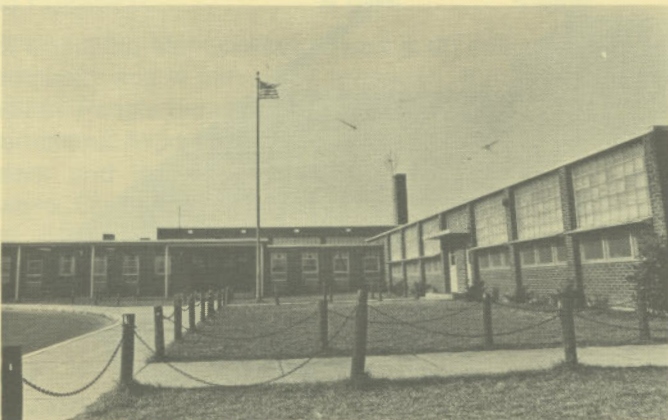
Governor's
Rural
Economic
Achievement
Trophy



Kendall Company



Bethune Public Library



Bethune Elementary School



Women's Club

LOCATION

As depicted on the cover, Bethune is in the central section of the state in Kershaw County. Charleston, South Carolina's busiest port, is 151 miles south. Columbia is 59 miles southwest and Greenville is 153 miles northwest. Bethune is 273 miles east of Atlanta and 690 miles south of New York.



POPULATION

The 1980 census population of the city of Bethune was 481. This was a 4.9% decrease from the 1970 population of 506. The population within a 15-mile radius is 46,316 and within a 30-mile radius is 187,316.

Kershaw County had a 1980 census population of 39,015, a 12.3% increase over the 1970 population of 34,727. The 1985 estimated county population is 41,100 and the 1990 projected population is 44,200.

CLIMATE

The climate in the Bethune area is temperate with a mean annual temperature of 63.5° F. The average temperature during January is 45.4° F, while the average July temperature is 81.2° F. The average relative humidity daily is 83% at 1:00 a.m.; 87% at 7:00 a.m.; 52% at 1:00 p.m.; 65% at 7:00 p.m.

The mean annual precipitation in the Bethune area is 46.36 inches and the average growing season is 250 days. The elevation of Bethune is 300 feet above sea level.

COMMUNICATIONS

Bethune is served by the *Camden Chronicle-Independent*, a tri-weekly newspaper. *The State* and *The Charlotte Observer* are widely read. Bethune is served by Camden's two AM stations and one FM station. Seven television stations, representing the three major networks, are received in the community, as are several educational stations. Telephone service in the community is provided by the Sandhill Telephone Cooperative, Inc.

GOVERNMENT

The community has a mayor-council form of municipal government. The four council members and the mayor are elected for four-year terms. Kershaw County is governed locally by a council-administrator form of government. The five council members are elected for four-year terms.

POLICE AND FIRE

The Bethune Police Department has two full-time police officers. The department operates two radio equipped patrol cars. The Bethune Fire Department has 28 volunteer firemen who operate three trucks. Bethune's insurance rating is Class 6.

FINANCIAL INSTITUTIONS

Bethune has one bank to serve the financial needs of the community. The bank has total assets of over \$11.1 million. There are several banks and savings and loans in Camden, 20 miles away.

HOTELS AND MOTELS

Nearby Camden has ten motels with a combined total of 250 overnight accommodations. Meeting and banquet facilities are available for large groups in Camden.

CHURCHES

There are four Protestant churches located within the town limits. Nearby Camden offers 32 Protestant churches as well as a Catholic church and a Jewish house of worship.

EDUCATION

Bethune, which is included in the Kershaw County Schools, has one elementary school; one middle school; and one high school. The student/teacher ratio is 17.9 to 1, with 33 teachers and 592 pupils. Private schooling is available in nearby Camden.

Higher education facilities for the area include Coker College, 20 miles away; University of South Carolina, 60 miles away; Francis Marion College, 55 miles away; and the Kershaw County Vocational Center, 15 miles away.

MEDICAL SERVICES

Bethune has a medical clinic, part of the Sandhill Medical Foundation, Inc. The 121-bed Kershaw County Memorial Hospital, located in Camden, provides complete medical services, including a coronary care unit. The county has an ambulance service for the hospital. Kershaw County also has an 88-bed long-term care facility. Bethune has one privately-practicing medical doctor and one privately-practicing dentist. There are 28 privately-practicing doctors and 13 privately-practicing dentists in nearby Camden who serve the community.

RECREATION AND CIVIC FACILITIES

The Kershaw County Recreation Department operates an outstanding recreational program and facilities. The recreation complex in Bethune includes two lighted tennis courts; a tot lot for children; one lighted baseball field;

one lighted softball field; one gym containing facilities for drama, music, plays, dancing and convenience for senior citizens, arts and crafts for all ages. Bethune Country Club features a nine-hole golf course. Bethune is fortunate to be within easy access to the famous "Grand Strand" beaches for water sports. Fishing is offered from the Big and Little Lynches Rivers, which pass within two miles of Bethune. Lake Robinson, which is ten miles away, offers swimming, fishing, boating and other attractions.

POWER

Electric power is available to the community and surrounding areas from Carolina Power & Light Company (CP&L) and Black River Electric Cooperative. CP&L has firm generation capacity of 8000 megawatts and forecasts sufficient reserves to accommodate industrial growth in its service area. Economical power from nuclear energy accounts for a major portion of CP&L's generation and serves to keep the company's rates below the national average. Usually CP&L will install, at no cost to the customer, the necessary equipment to supply the electrical requirements. Alternative rate schedules are available to the industrial customer with the most economical rate for a specific application determined by the characteristics of the user's consumption.

Electric power for Black River Electric Cooperative is supplied by Central Electric Power Cooperative and South Carolina Public Service Authority. The generation capacity of plants in operation or under construction totals over 3,200 megawatts with approximately 73% produced from coal. Interconnections are maintained with neighboring power suppliers. Sufficient reserves are available to meet immediate and future industrial power requirements. Economic Development Incentive Rates are available for qualifying industries.

FUELS

Natural gas is supplied by Carolina Natural Gas Company.

WATER

The town of Bethune is served by two wells with a maximum capacity of 215,000 gallons per day. The average flow is 25,000 gallons per day. Treated water storage consists of 75,000 gallons in elevated tanks.

Analysis of water supplied in the community:

Total solids	1 mg/L
Alkalinity	3 mg/L
Calcium	.42 mg/L
Hardness	20 mg/L
Iron	.18 mg/L
pH	5.5

SEWER

Bethune uses septic tanks to treat its municipal wastewater.

LABOR

Because labor information may change in this area, a cur-

rent labor availability report prepared and kept up to date by the S. C. State Development Board will be furnished to prospective manufacturers at their request. The comprehensive report will include sources of recruitable labor, labor force characteristics, work force skill levels, earnings data and other pertinent information. The S. C. State Board for Technical and Comprehensive Education has the resources to recruit and train workers in accordance with a company's entry criteria. This training is at little or no cost to the employer. A lead-time schedule is developed to coordinate recruiting, testing, selecting, and training. This assures that persons will be able to move from training to their respective jobs at the time the plant is ready for initial production.

TRANSPORTATION

Bethune is served by two interstate highways, I-95 and I-20; one United States highway; and two South Carolina highways. The community is served by the Seaboard System Railroad. Bethune is served by 33 authorized motor carriers.

Freight Delivery Times:

To:	By Rail:	By Truck:
Atlanta	2 days	1 day
Baltimore	3 days	3 days
Chicago	4 days	3 days
Houston	6 days	3 days
New York	4 days	4 days
St. Louis	4 days	4 days
San Francisco	6 days	5 days

The Columbia Metropolitan Airport is 60 miles from the community and is served by American, Bankair, Delta, Eastern, People Express, Piedmont and United. Douglas International Airport, Charlotte, North Carolina, is 75 miles distant and is served by American, Bankair, Delta, Eastern, Ozark, Pan Am, People Express, Piedmont, Sunbird, TWA, Trans South, United, U. S. Air and Wheeler. Private aircraft utilize Woodward Field, located in nearby

MAJOR EMPLOYERS

Name	Product or Service	Employees
Cal-Maine Foods, Inc.	Egg processing and egg products	126
E. I. Du Pont De Nemours & Company	Synthetic organic fibers	3,005
Kendall Company	Finishing cotton goods	940

Camden, which has a paved and lighted 4,500-foot runway and a paved 3,000-foot runway. Services available at Woodward Field are RBn; 80, 100LL and Jet A fuel; minor airframe and minor powerplant repairs; and Unicom.

FOREIGN TRADE ZONE

A Foreign Trade Zone is located in Summerville, South Carolina, 25 miles from the Port of Charleston and 126 miles from the community. The Foreign Trade Zone allows manufacturers to store, manufacture or process goods without paying U.S. Customs duties or worrying about quota compliance. This Foreign Trade Zone is served by a multimode transportation network which provides excellent accessibility to market areas.

TAXES

The assessment on industrial property in South Carolina is 10.5% of the market value. New industry is granted a five-year moratorium on general county taxes (with the exception of school taxes). The city tax rate is \$6.20 per \$100 of assessed value. The county rate is \$13.20 per \$100 of assessed value. The effective city tax rate (tax liability per \$100 of market value) is \$.65. The effective county rate is \$1.39. The state has no tax on a manufacturer's inventories, goods-in-process, raw materials or finished goods. Treatment facilities or equipment of manufacturing plants which control water or air pollution are exempt from all property taxation.

INDUSTRIAL SITES

Industrial sites are available in Bethune with a wide range of geographic and topographic features. In all probability, a site that will meet the needs of most industries' requirements has been identified, catalogued, and entered into the State Development Board's Computerized Site Selection System. Detailed site information is available and will be furnished upon request.

For Additional Information Contact:

SOUTH CAROLINA STATE DEVELOPMENT BOARD
 P. O. Box 927, Columbia, South Carolina 29202
 (803) 758-3145

