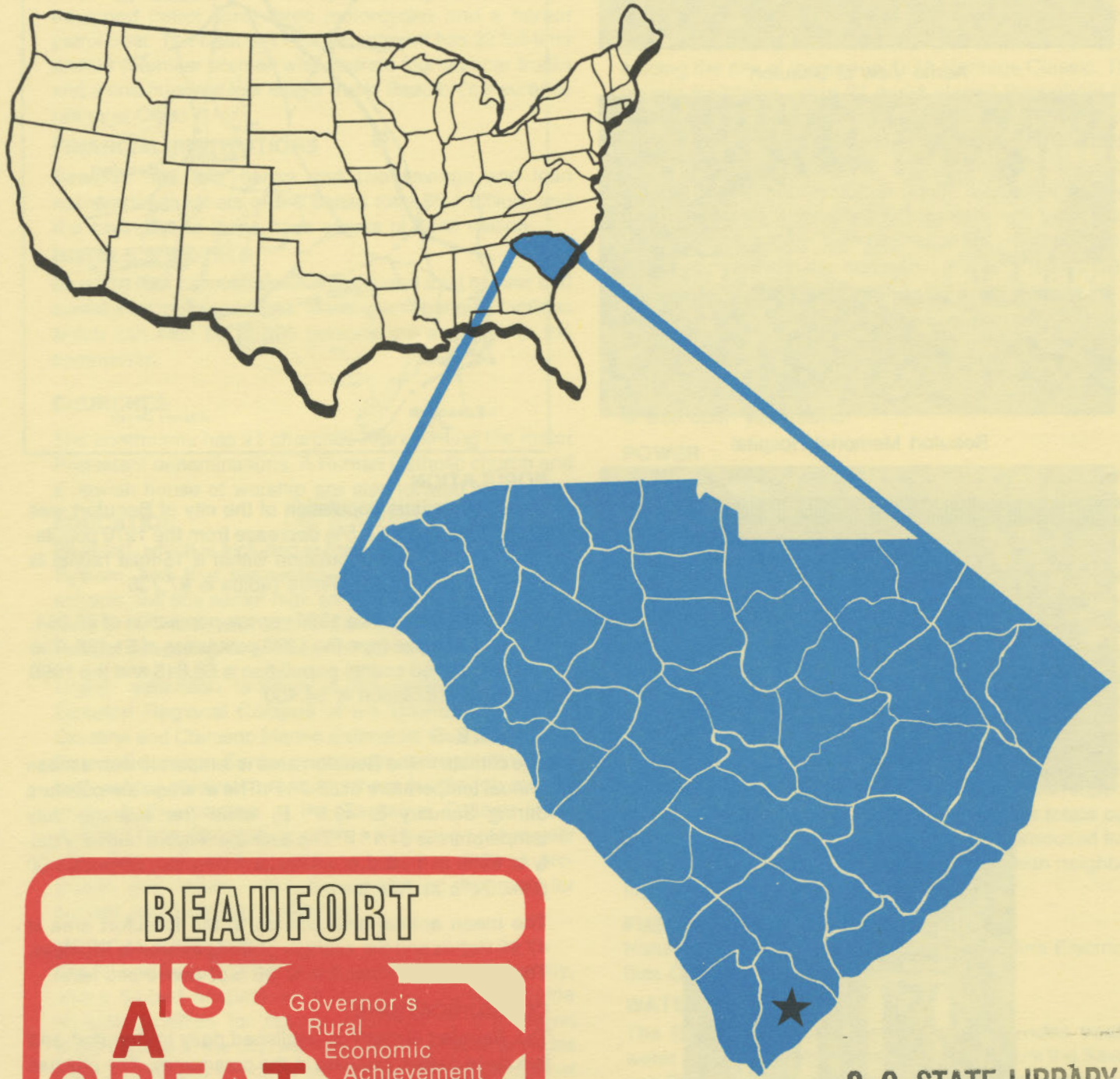


D4925
2.B31
Copy 1

BEAUFORT

south carolina



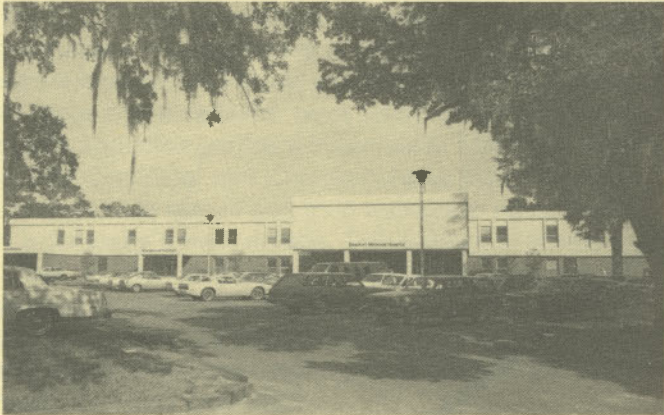
BEAUFORT
IS
A GREAT TOWN

Governor's
Rural
Economic
Achievement
Trophy

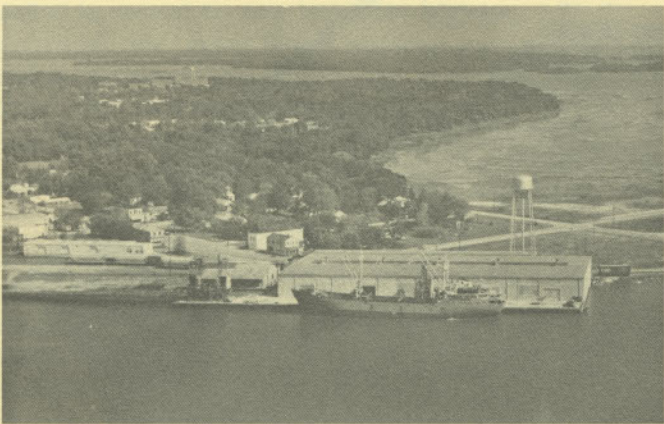
S. C. STATE LIBRARY
AUG 2 1 1984
STATE DOCUMENTS



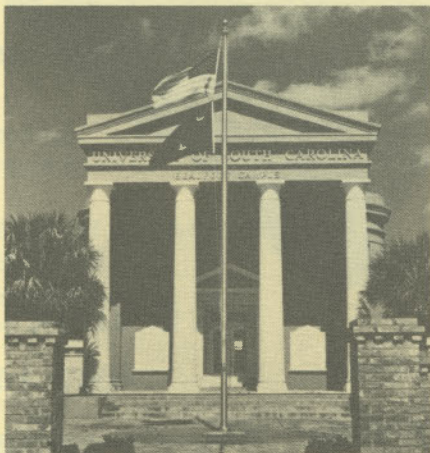
Aerial View of Beaufort



Beaufort Memorial Hospital



South Carolina Ports Authority Pier



Beaufort Regional Campus, University of South Carolina

LOCATION

As depicted on the cover, Beaufort, seat of Beaufort County, is in the south-coastal section of the state. Charleston, South Carolina's busiest port, is 69 miles northeast. Columbia is 126 miles north and Greenville is 226 miles northwest. Beaufort is 279 miles east of Atlanta; 790 miles south of New York; and 2,802 miles east of San Francisco.



POPULATION

The 1980 census population of the city of Beaufort was 8,634. This was an 8.5% decrease from the 1970 population of 9,434. The population within a 15-mile radius is 49,372 and within a 30-mile radius is 87,735.

Beaufort County had a 1980 census population of 65,364, a 27.8% increase from the 1970 population of 51,136. The 1983 estimated county population is 66,818 and the 1990 projected population is 84,400.

CLIMATE

The climate in the Beaufort area is temperate with a mean annual temperature of 65.7° F. The average temperature during January is 49.9° F, while the average July temperature is 81.1° F. The average relative humidity daily is 88% at 1:00 a.m.; 87% at 7:00 a.m.; 56% at 1:00 p.m.; 76% at 7:00 p.m.

The mean annual precipitation in the Beaufort area is 47.99 inches and the average growing season is 280 days. The elevation of Beaufort is 25 feet above sea level.

COMMUNICATIONS

The *Beaufort Gazette* is published daily in Beaufort and five large dailies circulate in the community. The city has several radio stations with both AM and FM facilities. Television reception is available from six stations, representing the three major networks and ETV. WJWJ-ETV operates from facilities on Beaufort Technical College campus. Cable television is also available. United Telephone Company of the Carolinas and Hargray Telephone Company provide residential and commercial telephone service to the Beaufort area.

GOVERNMENT

The City of Beaufort is governed under the mayor-council-manager system, with the mayor and four council members elected for four-year terms. Beaufort County is governed locally by a nine-member county council and a county administrator. Members of the council are elected every two years.

POLICE AND FIRE

The Beaufort Police Department has 27 full-time police officers, a police reserve unit, police cadets, and an administrative staff of ten. The department operates 13 radio equipped patrol cars, three motorcycles and a harbor patrol boat. The Beaufort Fire Department has 22 full-time and 26 volunteer firemen who operate four pumper trucks and a one-hundred-foot ladder truck. Beaufort's insurance rating is Class 6.

FINANCIAL INSTITUTIONS

Beaufort has four banks and two savings and loan associations. Assets of the banks total \$5.1 billion, and the savings and loans have assets of \$648 million.

HOTELS & MOTELS

Beaufort has 12 motels with a combined total of over 600 overnight accommodations. Meeting and banquet facilities which can seat up to 350 persons are available in the community.

CHURCHES

The community has 21 churches representing the major Protestant denominations. A Roman Catholic church and a Jewish house of worship are also located in the city.

EDUCATION

Beaufort, which is included in the Beaufort County School System, has four elementary schools; two junior high schools and one senior high school. The student/teacher ratio is 17.7 to 1, with 222 teachers and 3,939 students. Private schooling is available in the area.

Higher education facilities in the community include Beaufort Regional Campus of the University of South Carolina and Clemson Marine Extension. Beaufort-Jasper Career Education Center provides vocational training for high school students preparing them for the job market or for further studies at the Technical College level. Beaufort Technical College offers a wide range of two-year associate degree and one- and two-year diploma programs, and assists in specialized training programs for current and incoming industries.

MEDICAL SERVICES

The 99-bed Beaufort Memorial Hospital, located in the city, and a 64-bed hospital on Hilton Head Island, provide hospital facilities for county residents. A U.S. Naval Hospital, also in the city, with a 350-bed capacity, provides medical services to active and retired military personnel and is available during emergencies. There are 38 privately-practicing physicians and 16 privately-practicing dentists in the community.

RECREATION AND CIVIC FACILITIES

The city and county each have full-time recreation directors and provide supervised recreational activities. The

city maintains a swimming pool, completely self-contained gymnasium with conference, meeting and classrooms, and a separate Mini Arts Center; and offers some 67 programs for adults, youth and children, including the award-winning "Life! Be in it!" summer program, with a day camp for children. Additional city facilities include two tennis complexes, a ball park complex with baseball, soccer and football fields, three additional baseball fields, five passive parks, and the beautiful downtown Henry C. Chambers Waterfront Park. Concerts and entertainment are offered at the Waterfront Park, and it is the center of the annual week-long Beaufort Water Festival each July. In immediate proximity to the city, there are five championship golf courses, and Hilton Head offers nineteen more, including the site of the annual PGA Heritage Classic. The county maintains some 22 parks placed throughout the county, including five ball parks, and more than 30 boat landings. Hilton Head Island boasts one of the world's largest tennis complexes, and courts are available throughout the county. Other family recreation facilities include bowling, horseback riding, and both indoor and outdoor theaters, with two active little theater groups and a summer theater company. Hunting Island State Park, a 5,000 acre reservation with over three miles of beaches, boat-launching facilities, artificial fishing reef, hiking and nature trails, swimming and surfing is open year-round and free to the public. Hunting Island Campground offers excellent facilities at moderate rates, and is also open year-round.

POWER

Electric power is available to the community and surrounding areas from South Carolina Electric & Gas Company and Palmetto Electric Cooperative. For 1984 SCE&G projects reserve capacity to system coincidental peak of 32%. The company's total generating capacity is 3,959 megawatts. An additional 550 megawatts of coal fired generation is scheduled for 1989. SCE&G plans to have sufficient reserves to meet the immediate and future electrical needs of its service area. In addition, SCE&G maintains inter-tie connections with four neighboring utilities.

Electric power for Palmetto Electric Cooperative is supplied by Central Electric Power Cooperative and South Carolina Public Service Authority. The generation capacity of plants in operation or under construction totals over 3,000 megawatts with approximately 73% produced from coal. Inter-tie connections are maintained with neighboring power supplies.

FUELS

Natural gas is supplied by the South Carolina Electric & Gas Company.

WATER

The Beaufort-Jasper Water Authority provides treated water for the area. Raw water is obtained from the Savannah River. Treated water is supplied at a maximum rate of 8,000,000 gallons per day, with an average daily demand of 5,500,000 gallons. The system is being upgraded to bring the total capacity to 16,000,000 gallons per day. Treated water storage consists of 2,800,000 gallons in elevated storage and 1,500,000 gallons in ground storage.

Analysis of water supplied in the community:

Total solids	340 mg/L
Alkalinity	214 mg/L
Calcium	90 mg/L
Hardness	240 mg/L
Iron	5 mg/L
pH	6.8

SEWER

Beaufort's wastewater disposal system has a capacity for treating 750,000 gallons per day. The present flow on the system is averaging 1,050,000 gallons per day.

LABOR

Because labor information may change in this area, a current labor availability report prepared and kept up to date by the S. C. State Development Board will be furnished to prospective manufacturers at their request. The comprehensive report will include sources of recruitable labor, labor force characteristics, work force skill levels, earnings data and other pertinent information. The S. C. State Board for Technical and Comprehensive Education has the resources to recruit and train workers in accordance with a company's entry criteria. This training is at little or no cost to the employer. A lead-time schedule is developed to coordinate recruiting, testing, selecting, and training. This assures that persons will be able to move from training to their respective jobs at the time the plant is ready for initial production.

TRANSPORTATION

Beaufort is served by one interstate highway, I-95 (21 miles away), one United States highway, and one South Carolina highway. The community is served by one railroad: the Seaboard System Railroad. Beaufort is served by 30 authorized motor carriers.

Freight Delivery Times:

To:	By Rail:	By Truck:
Atlanta	3 days	1 day
Boston	5 days	4 days
Chicago	6 days	3 days
Houston	9 days	3 days
New York	4 days	2 days
St. Louis	6 days	2 days
San Francisco	11 days	5 days

MAJOR EMPLOYERS

Name	Product or Service	Employees
Coastal Seafoods	Seafood	75
Graves Construction Co., Inc.	Dwelling construction	225
MSC, Inc.	Concrete	62
National Water Lift Company	Flight controls	210
Parker White Metal	Die castings	59
Pirelli-Jerome Inc.	Power cable accessories	14

For Additional Information Contact:

SOUTH CAROLINA STATE DEVELOPMENT BOARD
P.O. Box 927 Columbia, South Carolina 29202
(803) 758-3145

The Savannah Municipal Airport, 45 miles away, offers regularly scheduled commercial airline service on Eastern, Delta, Piedmont, New York and American. Private aircraft utilize the Beaufort County Airport, which has a 3,430-foot paved and lighted runway. Services available at the Beaufort County Airport are RBn and Abvortac. Private aircraft also utilize the Hilton Head Airport, which has a 3,700-foot paved and lighted runway. Services available at the Hilton Head Airport include RBn, 100LL and Jet A fuel, Unicom and Abvortac.

FOREIGN TRADE ZONE

A Foreign Trade Zone is located in Summerville, South Carolina, 25 miles from the Port of Charleston and 44 miles from the community. The Foreign Trade Zone allows manufacturers to store, manufacture, or process goods without paying U.S. Customs duties or worrying about quota compliance. This Foreign Trade Zone is served by a multimode transportation network which provides excellent accessibility to market areas.

TAXES

The assessment on industrial property in South Carolina is 10.5% of the market value. New industry is granted a five-year moratorium on general county taxes (with the exception of school taxes). The city tax rate is \$9.00 per \$100 of assessed value. The county rate is \$11.01 per \$100 of assessed value. The effective city tax rate (tax liability per \$100 of market value) is \$.95. The effective county rate is \$1.16. The state has no tax on a manufacturer's inventories, goods-in-process, raw materials or finished goods. Treatment facilities or equipment of manufacturing plants which control water or air pollution are exempt from all property taxation.

INDUSTRIAL SITES

Industrial sites are available in Beaufort with a wide range of geographic and topographic features. In all probability, a site that will meet the needs of most industries' requirements has been identified, catalogued, and entered into the State Development Board's Computerized Site Selection System. Detailed site information is available and will be furnished upon request.

