

# SCSL Digital Collections

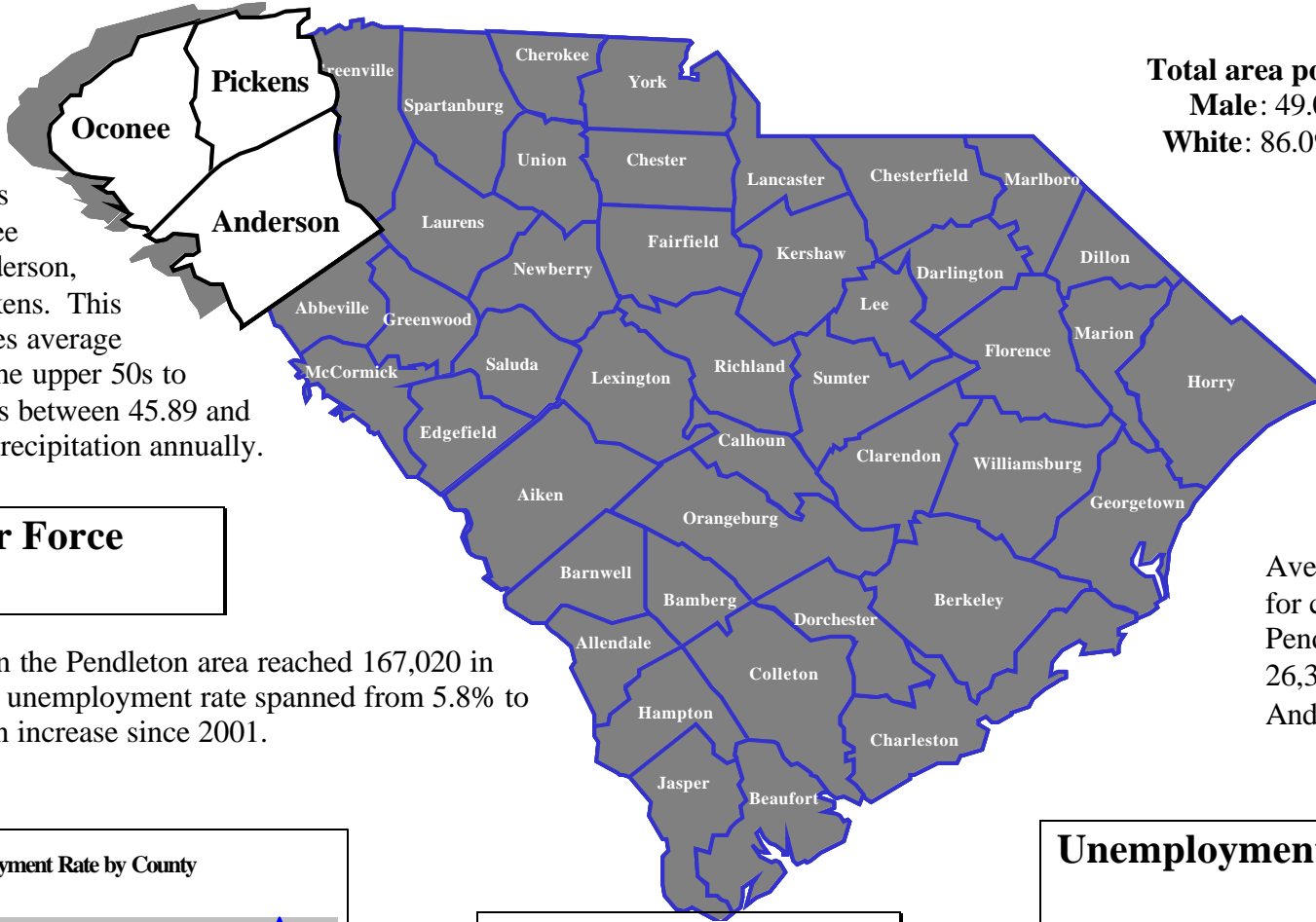
## Spotlight on Pendleton

Item Type	Text
Rights	Copyright status determined to be in the public domain on April 27, 2020 by United States Supreme Court ruling (Georgia et al., Petitioners v. Public.Resource.Org, Inc. : 590 U.S.__(2020))
Download date	2024-10-08 15:04:14
Link to Item	<a href="https://dc.statelibrary.sc.gov/handle/10827/39720">https://dc.statelibrary.sc.gov/handle/10827/39720</a>

# Spotlight on Pendleton

## Location & Climate

Located in the Northwestern area of the state, the Pendleton WIA is comprised of three (3) counties: Anderson, Oconee, and Pickens. This region experiences average temperatures in the upper 50s to lower 60s and has between 45.89 and 60.79 inches of precipitation annually.



## Population

**Total area population 2001: 348,504**  
**Male: 49.0% Female: 51.0%**  
**White: 86.0% Nonwhite: 14.0%**

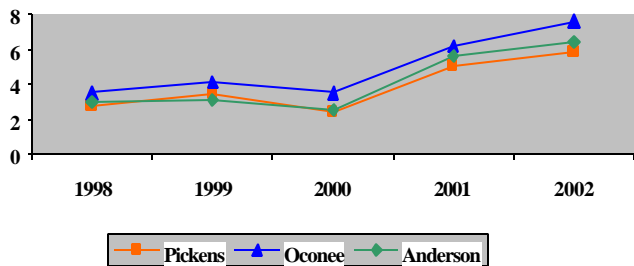
## Labor Force

The labor force in the Pendleton area reached 167,020 in 2002. The 2002 unemployment rate spanned from 5.8% to 7.6%, showing an increase since 2001.

## Employment

Average monthly employment for counties across the Pendleton WIA ranged from 26,300 in Oconee to 78,090 in Anderson.

WIA Unemployment Rate by County



## Per Capita Income

Per Capita Income for Pendleton WIA counties in 2001 ranged from \$21,838 in Pickens County to \$26,169 in Oconee County; between 88% and 105% of the state's PCI of \$24,840.

## Unemployment Insurance Benefits

In 2002, Unemployment insurance benefits paid by Workforce centers in the Pendleton WIA reached a total of \$38,129,005.