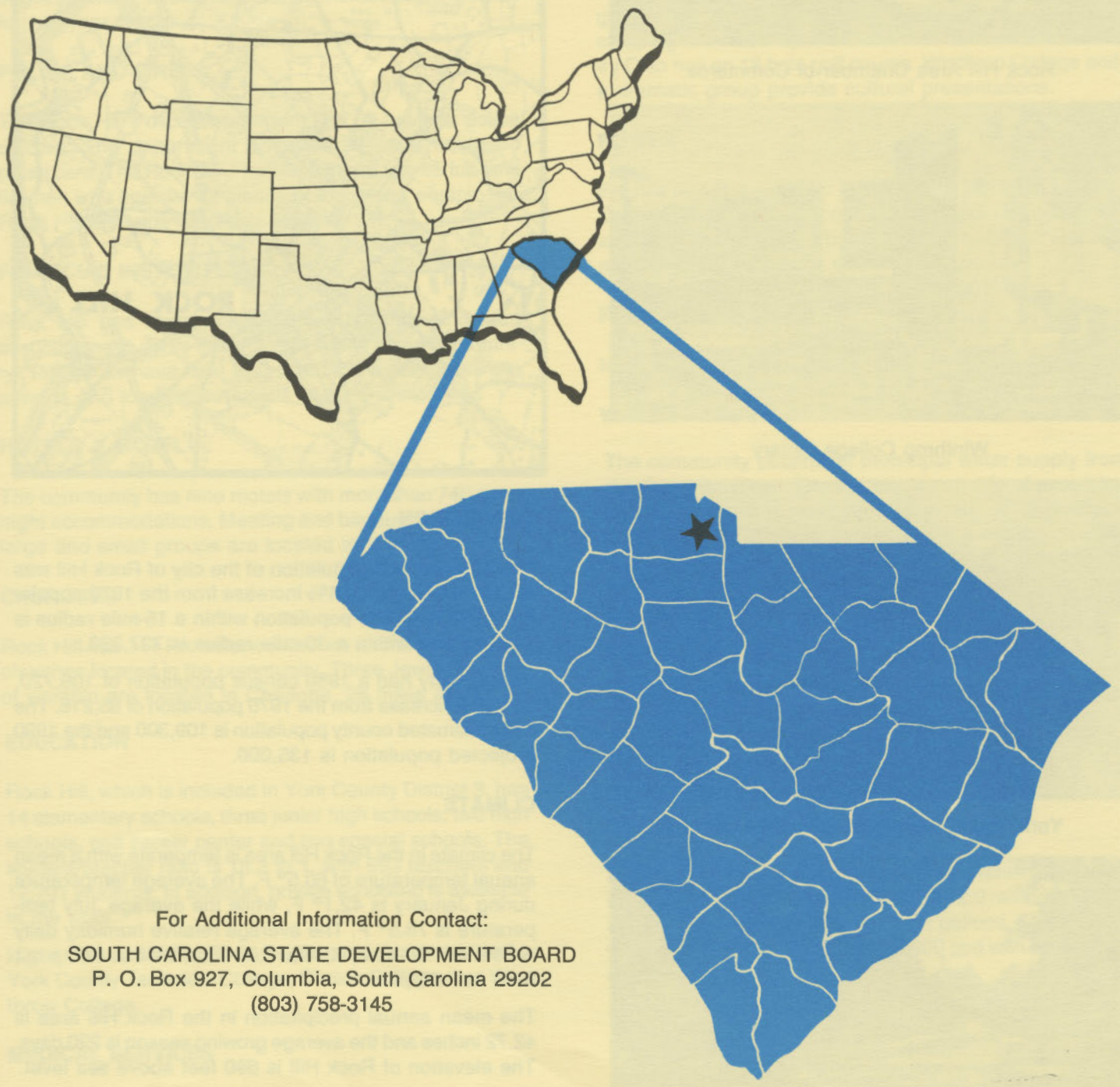


D4925
2.R52
1984

ROCK HILL

south carolina



For Additional Information Contact:
SOUTH CAROLINA STATE DEVELOPMENT BOARD
P. O. Box 927, Columbia, South Carolina 29202
(803) 758-3145

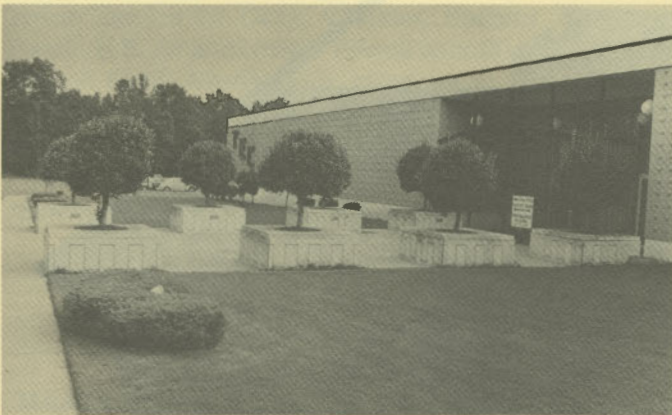
S. C. STATE LIBRARY
JUN 7 1984
STATE DOCUMENTS



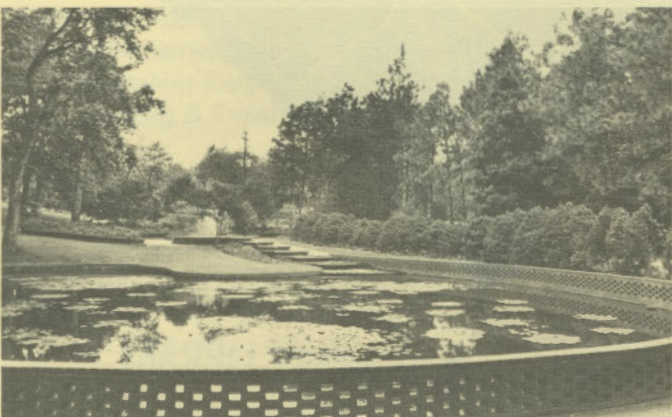
Rock Hill Area Chamber of Commerce



Winthrop College Library



York County Technical Education Center



Glencairn Gardens

LOCATION

As depicted on the cover, Rock Hill is in the northern section of the state in York County. Rock Hill is 182 miles north from South Carolina's busiest port, Charleston. Columbia is 72 miles south and Greenville is 95 miles west. Rock Hill is 26 miles south of Charlotte; 245 miles northeast of Atlanta; 640 miles south of New York; and 2,768 miles east of San Francisco.



POPULATION

The 1980 census population of the city of Rock Hill was 35,344. This was a 4.4% increase from the 1970 population of 33,846. The population within a 15-mile radius is 113,265 and within a 30-mile radius is 737,320.

York County had a 1980 census population of 106,720, a 25.2% increase from the 1970 population of 85,216. The 1981 estimated county population is 109,300 and the 1990 projected population is 135,000.

CLIMATE

The climate in the Rock Hill area is temperate with a mean annual temperature of 60.5° F. The average temperature during January is 42.1° F, while the average July temperature is 78.5° F. The average relative humidity daily is 76% at 1:00 a.m.; 83% at 7:00 a.m.; 54% at 1:00 p.m.; 61% at 7:00 p.m.

The mean annual precipitation in the Rock Hill area is 42.72 inches and the average growing season is 220 days. The elevation of Rock Hill is 690 feet above sea level.

COMMUNICATIONS

The daily *Rock Hill Evening Herald* and the weekly *Rock Hill Times* are published in the city. Five other dailies circulate in the area. Three AM radio stations, WCRO, WRHI and WTYC, are located in the city. Television reception

is available from ten stations, representing the three major networks and educational television. Catawba Services provides cable television service. Telephone service is provided by the Rock Hill Telephone Company.

GOVERNMENT

The community has a council-manager form of municipal government. The six city council members are elected for four-year terms. The county has a council-manager form of government. The seven council members are elected for two-year terms.

POLICE AND FIRE

The Rock Hill Police Department has 68 full-time police officers. The department operates 22 radio equipped patrol cars. The Rock Hill Fire Department has 65 full-time firemen who operate 12 pieces of motorized equipment. Rock Hill's insurance rating is Class 3.

FINANCIAL INSTITUTIONS

Rock Hill has four banks and two savings and loan associations to serve the financial needs of the community. The banks have total assets of \$4.6 billion, while the savings and loans have assets of \$288 million.

HOTELS & MOTELS

The community has nine motels with more than 740 overnight accommodations. Meeting and banquet facilities for large and small groups are located in the city.

CHURCHES

Rock Hill has 111 Protestant churches and three Catholic churches located in the community. Three Jewish houses of worship are located in Charlotte, 26 miles away.

EDUCATION

Rock Hill, which is included in York County District 3, has 14 elementary schools, three junior high schools, two high schools, one career center and two special schools. The student/teacher ratio is 18.3 to 1, with 693 teachers and 12,701 students. In addition, private schooling is available in the area.

Higher education facilities for the area are provided by York County Technical College, Clinton College, and Winthrop College.

MEDICAL SERVICES

Medical services for the community are provided in the city by the 273-bed Piedmont Medical Center. Other specialized medical treatment facilities are located in Charlotte, North Carolina, 26 miles away. The community has 83 privately-practicing medical doctors and 27 privately-practicing dentists.

RECREATION AND CIVIC FACILITIES

Recreation facilities in the community consist of 23 playgrounds, two community centers, four neighborhood centers, parks, theaters, a nature museum, three municipal swimming pools, a bowling alley, miniature golf course and driving range. Carowinds, a few miles from the community, offers a huge entertainment complex for the whole family. The city recreation program offers organized activities in athletics, swimming, dancing, ceramics, archery, bridge, rifle instruction and other programs. Nearby Lake Wylie provides public boat landings, camping and water sports facilities. The Rock Hill Country Club has an 18-hole golf course. Winthrop College and a dramatic group provide cultural presentations.

POWER

Electric power is supplied by the City of Rock Hill Utilities Department. Prospective consumers should ascertain the available type of service by inquiry of the Utilities Department before purchasing equipment.

FUELS

Natural gas is supplied by Carolina Pipeline Company.

WATER

The community obtains its municipal water supply from the Catawba River. The system is capable of supplying treated water at a maximum daily rate of 12.0 million gallons. Daily average demand is 5.8 million gallons. Treated water storage consists of 2.5 million gallons in elevated storage and 2.0 million gallons in ground storage.

Analysis of water supplied in the community:

Total solids	110mg/L
Alkalinity	42mg/L
Calcium	3mg/L
Hardness	15mg/L
Iron	0.1mg/L
pH	7.5

SEWER

Rock Hill has two sewage treatment plants. The Manchester Creek plant has a capacity of 12.0 million gpd with an average daily flow of 7.0 million gallons. The Wildcat Creek plant has a capacity of 500,000 gpd with an average daily flow of 450,000 gallons.

LABOR

Because labor information may change in this area, a current labor availability report prepared and kept up to date by the S.C. State Development Board will be furnished to prospective manufacturers at their request. The comprehensive report will include sources of recruitable labor, labor force characteristics, work force skill levels, earnings data and other pertinent information. The S.C. State Board for Technical and Comprehensive Education has

the resources to recruit and train workers in accordance with a company's entry criteria. This training is at little or no cost to the employer. A lead time schedule is developed to coordinate recruiting, testing, selecting, and training. This assures that persons will be able to move from training to their respective jobs at the time the plant is ready for initial production.

TRANSPORTATION

Rock Hill is served by one interstate highway, I-77, two United States highways and six South Carolina highways. Rock Hill is served by two railroads, the Seaboard System and the Southern Railway System. The community is served by 52 authorized motor carriers, two of which have terminal facilities in the area.

Freight Delivery Times:

To:	By Rail:	By Truck:
Atlanta	3 days	1 day
Boston	6 days	4 days
Chicago	6 days	3 days
Houston	9 days	3 days
New York	4 days	3 days
St. Louis	6 days	2 days
San Francisco	12 days	5 days

Charlotte's Douglas International Airport, 26 miles from the community, offers regularly scheduled commercial airline service on Delta, Wheeler, Eastern, Piedmont, Ozark, U.S. Air and United. Private aircraft use Rock Hill's Bryant Field Airport, four miles away, which has a 5,000-foot, paved and lighted runway. Services available at the Rock Hill airport are charter flights, hangars, RBN, Unicom, Vortac, major airframe and major powerplant repairs, and 100 and Jet A1 fuel.

FOREIGN TRADE ZONES

Two Foreign Trade Zones are within working distance of Rock Hill. One is located in Summerville, South Carolina, 25 miles from the Port of Charleston and 147 miles from Rock Hill. Another is located 20 miles north of Rock Hill in Charlotte, North Carolina. The Foreign Trade Zones allow manufacturers to store, manufacture, or process goods without paying U.S. Customs duties or worrying about quota compliance. The Foreign Trade Zones are served by a multimode transportation network which provides excellent accessibility to market areas.

TAXES

The assessment on industrial property in South Carolina is 10.5% of the market value. New industry is granted a five-year moratorium on general county taxes (with the exception of school taxes). The city tax rate is \$10.20 per \$100 of assessed value. The county rate is \$15.81 per \$100 of assessed value. The effective city tax rate (tax liability per \$100 of market value) is \$1.07. The effective county rate is \$1.66. The state has no tax on a manufacturer's inventories, goods-in-process, raw materials or finished goods. Treatment facilities or equipment of manufacturing plants which control water or air pollution are exempt from all property taxation.

INDUSTRIAL SITES

Industrial sites are available in Rock Hill with a wide range of geographic and topographic features. In all probability, a site that will meet the needs of most industries' requirements has been identified, catalogued, and entered into the State Development Board's Computerized Site Selection System. Detailed site information is available and will be furnished upon request.

MAJOR EMPLOYERS

Name	Product or Service	Employees
Celanese Fibers Oper.	Acetate filament & staple	2,024
Inland Container Corp.	Corrugated containers	114
M. Lowenstein Corp.	Management research	430
R.H. Printing & Finishing Co.	Printing and finishing cotton wovens	923
Randolph Yarns Inc.	Spun synthetic yards	160
Smith Enterprises, Inc.	Easter baskets	299

