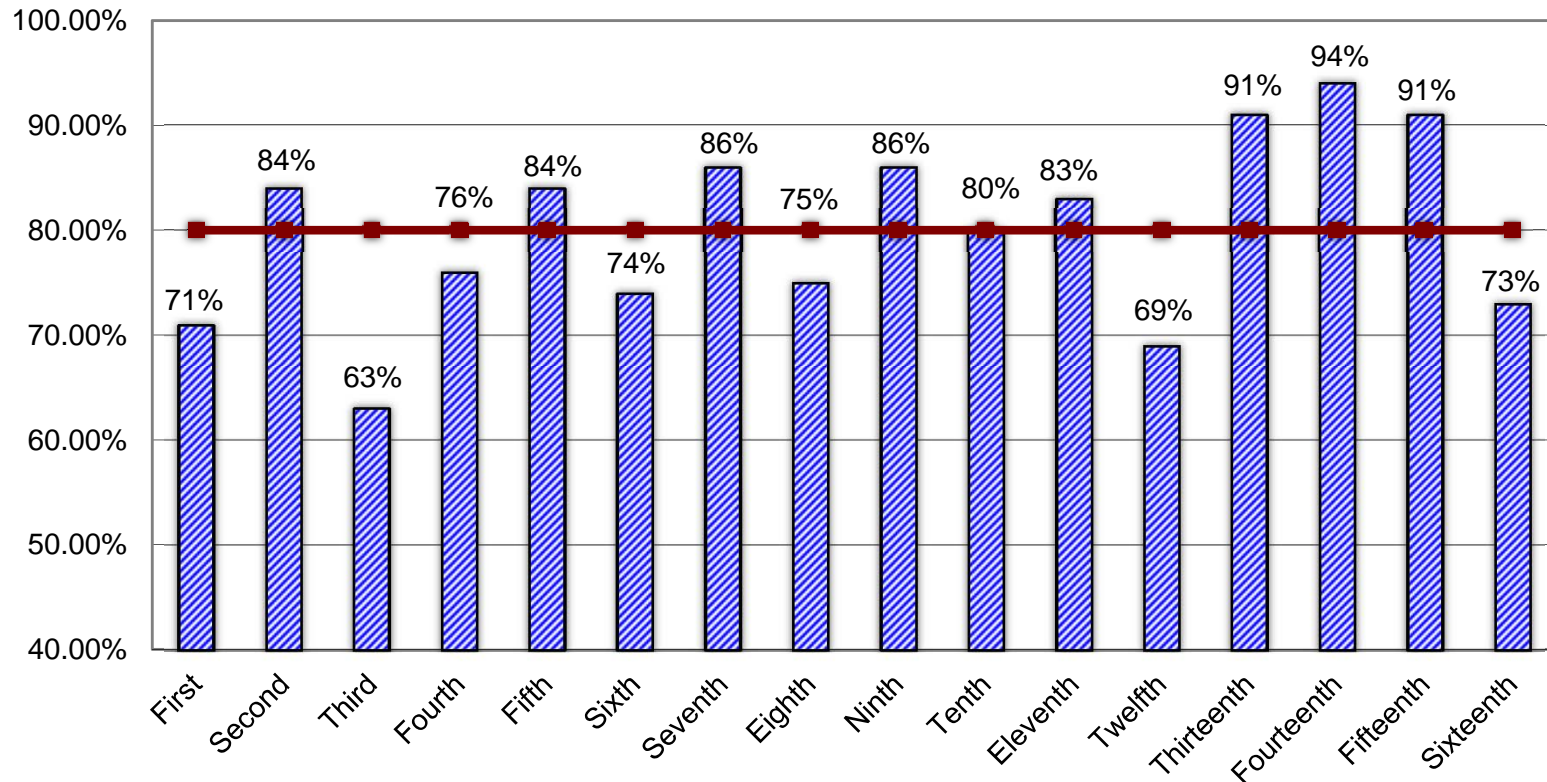


S. C. Family Court
 Circuits Meeting Benchmark
 80% of Pending Docket 365 days or Less
 as of May 31, 2014

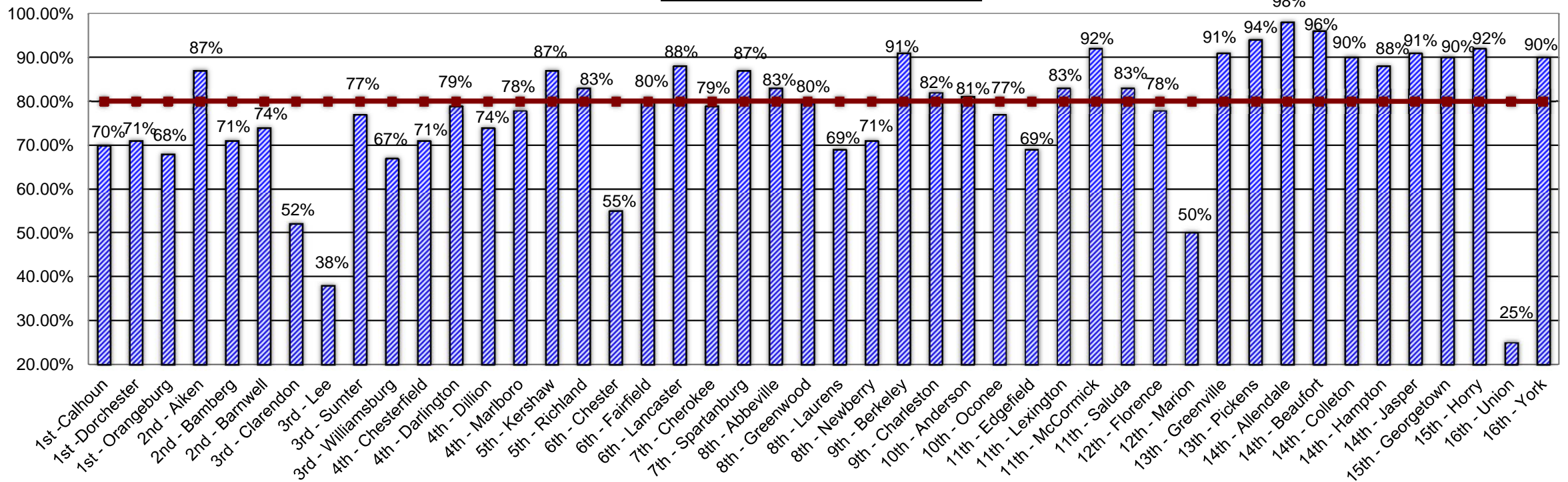


Judicial Circuits
 Circuits meeting benchmark: 9 of 16

Source: S.C. Court Administration, CAF 20, May 31, 2014. Run Date: June 6, 2014.

Disclaimer: As of September 2010, family court benchmark totals no longer include pending child abuse and neglect cases.

S. C. Family Court
 Counties Meeting Benchmark
 80% of Pending Docket 365 days or Less
 as of May 31, 2014



Counties meeting benchmark: 24 of 46

Source: S.C. Court Administration, CAF 20 May 31, 2014. Run Date: June 6, 2014.

Disclaimer: As of September 2010, family court benchmark totals no longer include pending child abuse and neglect cases.