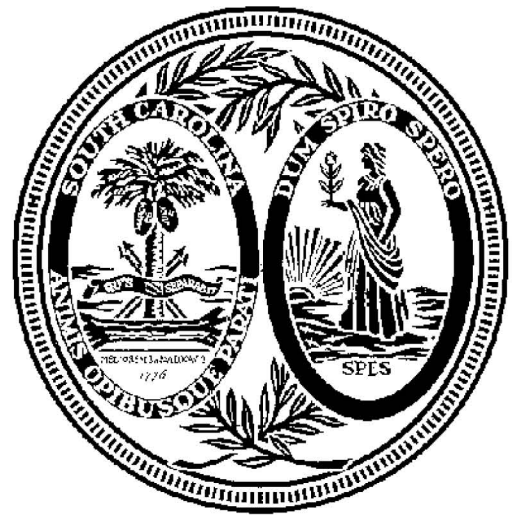


Pee Dee Area Base Labor Market Analysis



South Carolina
Department of
Commerce
Labor Market Information

TABLE OF CONTENTS

EXECUTIVE SUMMARY	5
POPULATION	6
Growth	6
LABORSHED	7
Characteristics of Workers	7
INCOME	9
Per Capita Income	9
Wages by Industry	10
Wages by Occupation	11
EDUCATION	12
High School Graduates	12
Higher Education Graduates	13
OCCUPATIONS	14
Occupational Projections	14
Occupational Education Requirements	15
INDUSTRY	16
Businesses by Sector	16
Growth in Number of Businesses	17
Employment by Sector	17
Industry Analysis	18
MOVING FORWARD	20
Appendix A: Occupational Projections	

EXECUTIVE SUMMARY

Population

The Pee Dee area's population growth has been slower than the state's in recent years.

Future population growth is expected to continue to lag behind the state rate.

The Pee Dee area attracts workers from a wide area beyond its borders.

But most workers live within the six-county Pee Dee area.

Income

Per capita income growth has been on par with South Carolina.

The Pee Dee area's per capita income was just below the state level from 1996 to 2006.

The Pee Dee area's average wages are below those of the state for various industries and occupations.

Education

The number of degrees awarded by area post-secondary institutions has increased.

The greatest increase has been in the areas of business management, health, mechanics and repair, and computer and information sciences.

Occupations

These occupational groups are expected to have faster growth in the Pee Dee Area than in the state:

Business and financial operations, architecture and engineering, community and social services, legal, protective service, building and grounds cleaning and maintenance, personal care and service, farming and forestry, production, and transportation and material moving.

Requirements for the Pee Dee area's workers are expected to grow in the following levels of education and experience:

Moderate-term on-the-job training, work experience in a related field, bachelor's degree, and master's degree or higher.

Industry

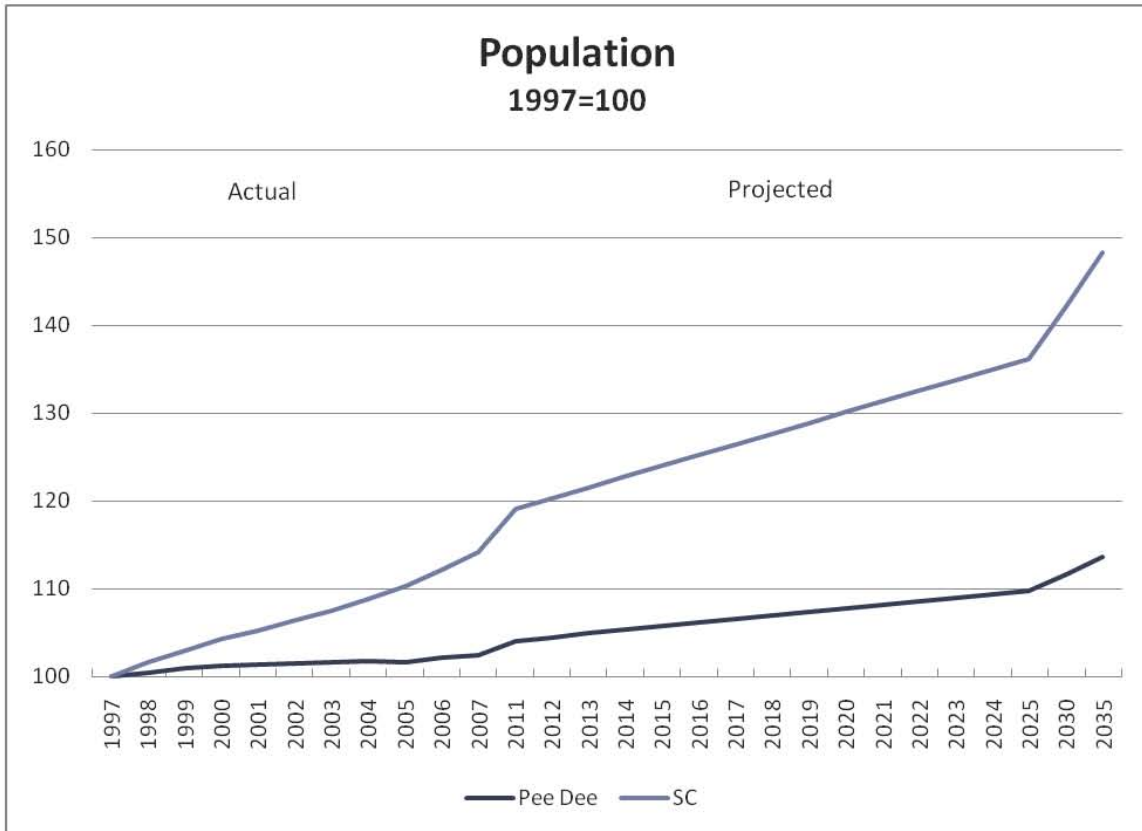
Sectors rated as having high potential in various parts of the Pee Dee area are as follows:

Plastics and rubber products manufacturing, fabricated metal products manufacturing, wood products manufacturing, nonmetallic mineral product manufacturing, machinery manufacturing, paper manufacturing, transportation equipment manufacturing, management of companies and enterprises, wholesalers, warehousing and storage, truck transportation, healthcare, and forestry and logging.

POPULATION

Growth

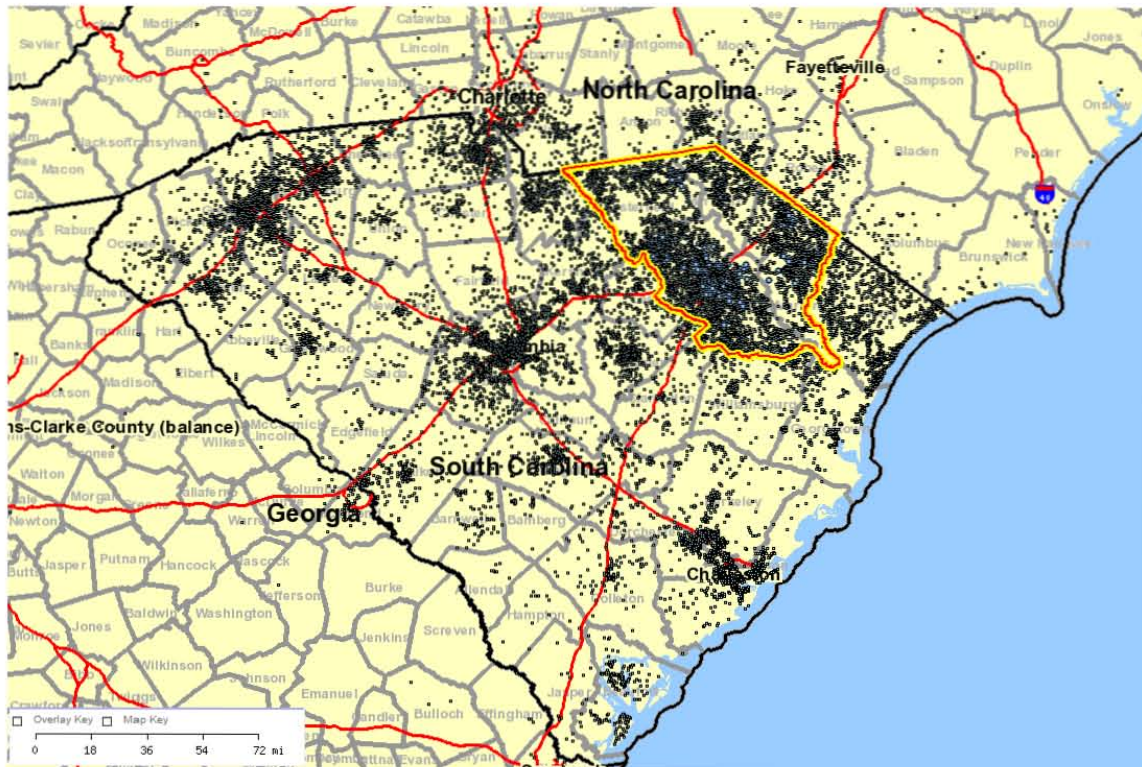
The Pee Dee area's 2007 population was 334,898. The area population has grown by 2.4% since 1997, compared to 14% for South Carolina. Future population growth is expected to continue to lag behind state levels.



Source: U.S. Census Bureau (estimates) and SC Budget & Control Board/Office of Research and Statistics (projections).

LABORSHED

The map below shows where Pee Dee area workers come from (in 2004, latest available data). As can be seen, the Pee Dee area draws workers from across South Carolina and across the border in the bordering North Carolina counties. But most of its workers live within the Pee Dee area.



Source: U.S. Census Bureau, Local Employment Dynamics.

Characteristics of Workers

Age of Workers:		Earnings of Workers:	
30 or younger	23.7%	\$1,200 per month or less	30.2%
31 to 54	59.9%	\$1,201 to \$3,400 per month	48.2%
55 or older	16.4%	More than \$3,400 per month	21.5%

States Where Workers Live:

South Carolina	95.5%
North Carolina	2.6%
All other locations	2.0%

Counties Where Workers Live:

Florence, South Carolina	31.2%
Darlington, South Carolina	18.5%
Marion, South Carolina	7.0%
Dillon, South Carolina	6.8%
Chesterfield, South Carolina	6.6%
Marlboro, South Carolina	5.7%
Horry, South Carolina	2.9%
Richland, South Carolina	2.0%
Sumter, South Carolina	1.3%
Greenville, South Carolina	1.2%
All other locations	16.8%

Cities Where Workers Live:

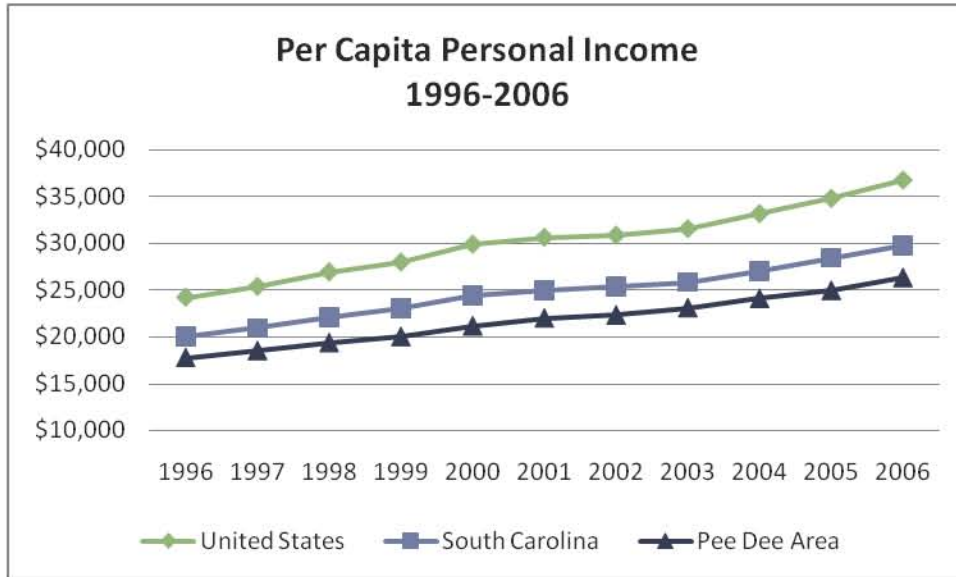
Florence, South Carolina	8.1%
Bennettsville, South Carolina	1.9%
Hartsville, South Carolina	1.9%
Darlington, South Carolina	1.8%
Dillon, South Carolina	1.7%
Marion, South Carolina	1.6%
Cheraw, South Carolina	1.6%
Lake City, South Carolina	1.4%
Mullins, South Carolina	1.0%
North Hartsville, South Carolina	0.9%
All other locations	78.2%

Source: U.S. Census Bureau, Local Employment Dynamics.

INCOME

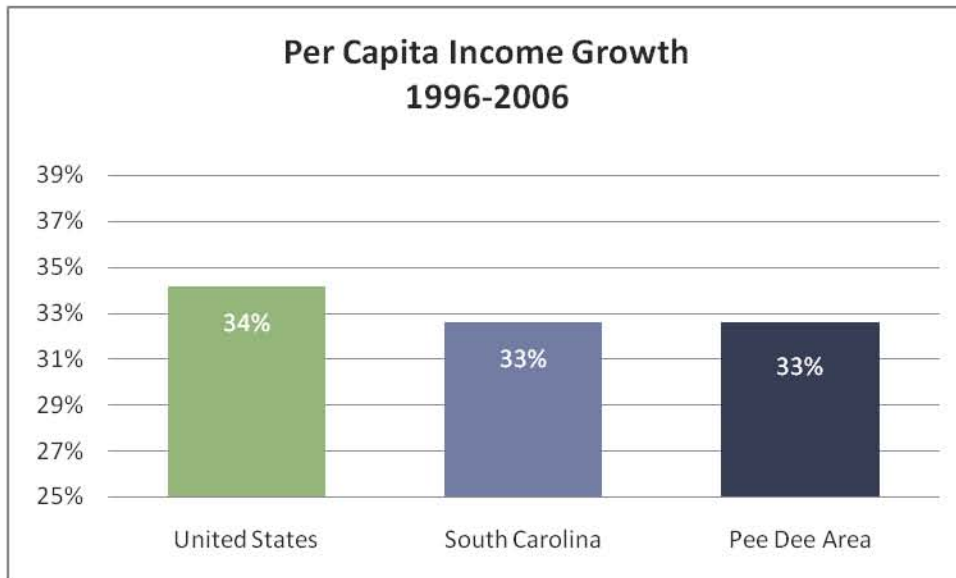
Per Capita Income

The Pee Dee area's per capita income increased steadily from 1996 to 2006 and remained just below the state average.



Source: U.S. Department of Commerce, Bureau of Economic Analysis.

The Pee Dee area's per capita income growth has been the same as South Carolina's. As a result, the Pee Dee area has not made up ground on the U.S. in this key measure of economic vitality.



Source: U.S. Department of Commerce, Bureau of Economic Analysis.

Wages by Industry

The Pee Dee area's average wages are below those of South Carolina (\$626 vs. \$680 in 2007). Average wages were up 13% in the Pee Dee Area over the past five years. All major sectors had growth over the past five years.

Industry	NAICS Code	2007 Average Weekly Wage	2002 Average Weekly Wage	Change
Total, Private and Government		\$626	\$547	13%
Agriculture, Forestry, and Hunting	11	402	312	22
Construction	23	683	545	20
Manufacturing	31-33	856	683	20
Wholesale Trade	42	706	625	11
Retail Trade	44-45	397	363	9
Transportation and Warehousing	48-49	637	542	15
Information	51	693	579	16
Finance and Insurance	52	743	702	5
Real Estate and Rental and Leasing	53	507	407	20
Professional and Technical Services	54	898	691	23
Management of Companies and Enterprises	55	770	513	33
Administration & Support & Waste Management & Remediation Services	56	431	356	17
Educational Services	61	371	297	20
Health Care and Social Assistance	62	711	708	0.4
Arts, Entertainment, and Recreation	71	303	268	12
Accommodation and Food Services	72	216	194	10
Other Services (Except Public Administration)	81	416	342	18
Federal Government		997	821	18
State Government		678	596	12
Local Government		621	554	12

Source: U.S. Department of Labor, Bureau of Labor Statistics, Quarterly Census of Employment and Wages.

Wages by Occupation

Average wages in the Pee Dee area are lower than South Carolina's in all major occupational groups.

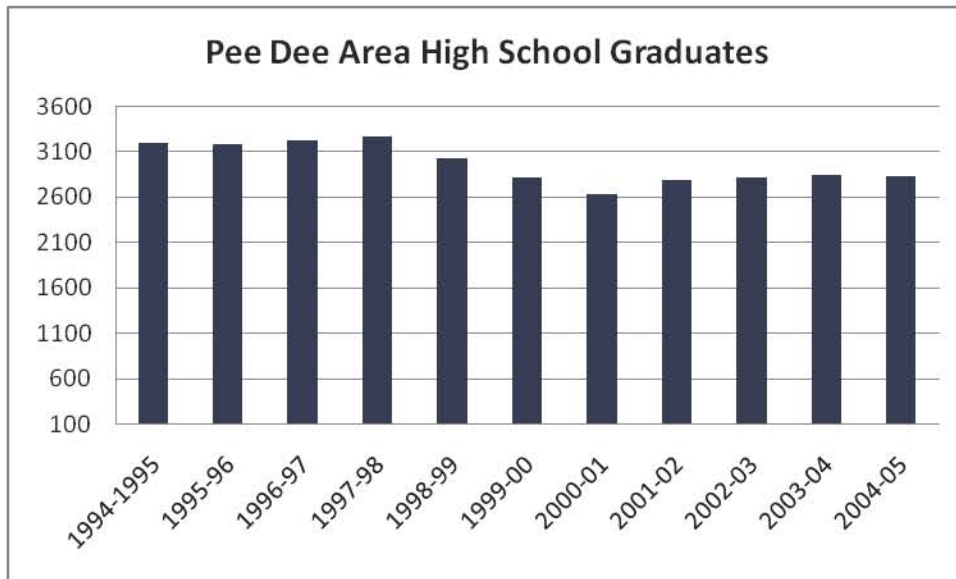
Occupation	2007 Pee Dee Area Median Hourly Wage	2007 SC Median Hourly Wage
Management occupations	\$27.84	\$28.78
Business and financial operations occupations	\$17.65	\$20.28
Computer and mathematical science occupations	\$22.68	\$26.20
Architecture and engineering occupations	\$28.83	\$30.22
Life, physical and social science occupations	\$22.42	\$22.76
Community and social services occupations	\$13.07	\$13.18
Legal occupations	\$23.88	\$30.68
Education, training and library occupations	\$22.81	\$24.42
Arts, design, entertainment, sports and media occupations	\$10.51	\$12.66
Healthcare practitioners and technical occupations	\$29.48	\$30.64
Healthcare support occupations	\$9.24	\$10.55
Protective service occupations	\$13.20	\$13.87
Food preparation and serving related occupations	\$7.75	\$7.90
Building and grounds cleaning and maintenance occupations	\$7.39	\$8.42
Personal care and service occupations	\$7.76	\$8.39
Sales and related occupations	\$12.47	\$13.48
Office and administrative support occupations	\$12.49	\$13.22
Farming, fishing, and forestry occupations	\$12.46	\$13.07
Construction and extraction occupations	\$15.05	\$16.51
Installation, maintenance and repair occupations	\$15.84	\$16.88
Production occupations	\$14.16	\$15.21
Transportation and material moving occupations	\$12.02	\$12.94

Source: *Economic Modeling Specialists, Inc.*

EDUCATION

High School Graduates

From 1995 to 2005 (latest data available), the number of Pee Dee area students receiving high school diplomas fluctuated, but was lower by 372—or 12%—in 2005 than in 1995. In South Carolina, on the other hand, the number of high school diplomas increased 9% from 1995 to 2005. A total of 2,821 people received high school diplomas in the Pee Dee area in 2005. Explaining the drop in graduates, the Pee Dee area had 397 fewer 12th grade students in 2004-05 than in 1994-95. Also, the number of students not passing the exit exam who received a certificate of completion instead of a diploma increased by 172 (to 313) over the 1995-2005 period.



Source: National Center for Education Statistics.

Higher Education Graduates

Over 1,400 more students graduated from higher educational institutions in the Pee Dee area in 2006 than in 1996, an increase of 23%. The greatest numerical increase was in business management fields.

Program	1996	2006	Change	% Change
Business Management and Administrative Services	910	1,229	319	26%
Health Professions and Related Sciences	1,056	1,332	276	21%
Mechanics and Repairers	142	254	112	44%
Computer and Information Sciences	118	226	108	48%
Construction Trades	77	168	91	54%
Public Administration and Services	65	155	90	58%
Social Sciences and History	259	348	89	26%
Education	513	590	77	13%
Biological Science/Life Sciences	200	276	76	28%
Communications	17	73	56	77%
Liberal Arts and Studies, General Sciences and Humanities	478	530	52	10%
Parks, Recreation, Leisure and Fitness Studies	21	73	52	71%
Visual and Performing Arts	63	102	39	38%
Personal and Miscellaneous Services	48	83	35	42%
Physical Sciences	34	65	31	48%
Foreign Languages and Literatures	3	16	13	81%
Psychology	144	156	12	8%
Precision Production Trades	89	99	10	10%
Law and Legal Studies	35	44	9	20%
Protective Services	225	234	9	4%
Philosophy and Religion	6	11	5	45%
Multi/Interdisciplinary Studies	27	28	1	4%
Engineering-Related Technologies	128	121	-7	-6%
Mathematics	45	24	-21	-88%
Agricultural Business and Production	44	20	-24	-120%
English Language and Literature/Letters	114	83	-31	-37%
Total	4,861	6,340	1,479	23%

Source: National Center for Education Statistics (Integrated Post Secondary Education System).

Data for these schools: Central Carolina Technical College, Coastal Carolina University, Coker College, Florence-Darlington Technical College, Horry-Georgetown Technical College, McLeod Regional Medical Center School of Medical Technology, Morris College, Northeastern Technical College, Richmond Community College (NC), Robeson Community College (NC), South Piedmont Community College (NC), St. Andrews Presbyterian College (NC), University of North Carolina at Pembroke, University of South Carolina-Lancaster, and University of South Carolina-Sumter.

OCCUPATIONS

Occupational Projections

The following occupational groups are projected to grow faster in the Pee Dee area than in the state:

- Business and financial operations
- Architecture and engineering
- Community and social services
- Legal
- Protective service
- Building and grounds cleaning and maintenance
- Personal care and service
- Farming and forestry
- Production
- Transportation and material moving

See **Appendix A** for detailed occupational information.

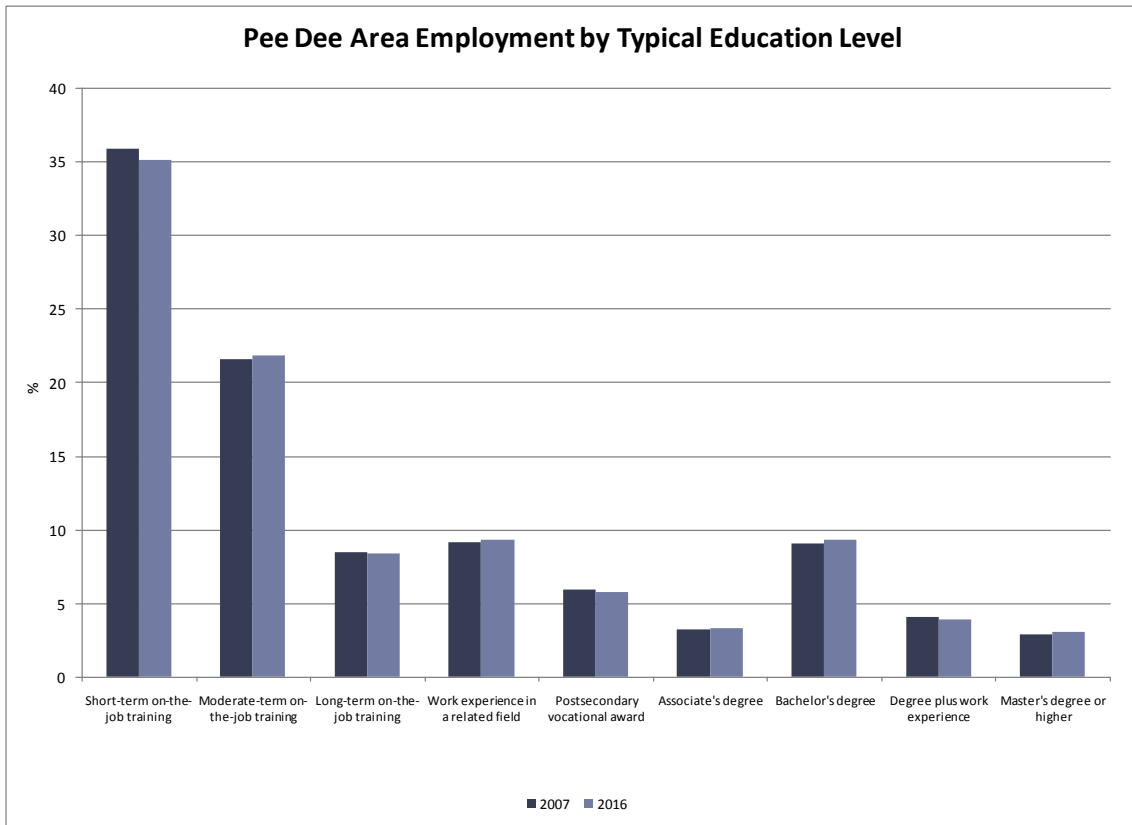
Occupation	2007-2016 Pee Dee Area Projected Growth	2007-2016 SC Projected Growth
Management occupations	15%	17%
Business and financial operations occupations	24	22
Computer and mathematical science occupations	21	23
Architecture and engineering occupations	23	15
Life, physical, and social science occupations	11	15
Community and social services occupations	20	15
Legal occupations	25	21
Education, training, and library occupations	15	16
Arts, design, entertainment, sports and media occupations	14	17
Healthcare practitioners and technical occupations	19	24
Healthcare support occupations	23	25
Protective service occupations	20	18
Food preparation and serving related occupations	9	13
Building and grounds cleaning and maintenance occupations	30	23
Personal care and service occupations	10	7
Sales and related occupations	14	19
Office and administrative support occupations	11	13
Farming, fishing, and forestry occupations	22	16
Construction and extraction occupations	15	19
Installation, maintenance, and repair occupations	17	17
Production occupations	19	10
Transportation and material moving occupations	14	11

Source: *Economic Modeling Specialists, Inc.*

Occupational Education Requirements

Occupational growth trends show that education and training requirements are generally increasing. This is reflected in the projected growth of occupations such as engineers, business professionals and skilled production workers in the Pee Dee area. Based on employment projections, the Pee Dee area is expected to see growth in requirements for the following levels of education and experience:

- Moderate-term on-the-job training
- Work experience in a related field
- Bachelor's degree
- Master's degree or higher



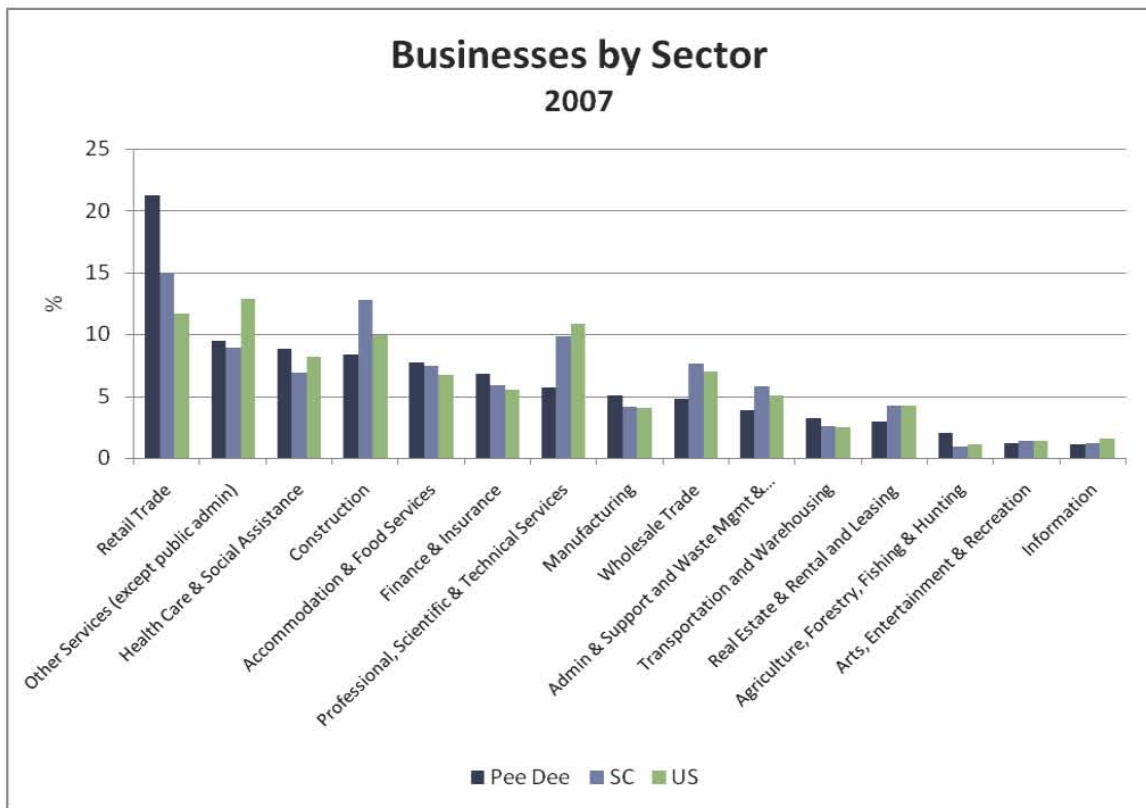
Source: *Economic Modeling Specialists, Inc*

INDUSTRY

Businesses by Sector

The Pee Dee area had higher percentages of businesses than South Carolina or the nation in the following sectors:

- Retail trade
- Health care and social assistance
- Accommodation and food services
- Finance and insurance
- Manufacturing
- Transportation and warehousing
- Agriculture and forestry



Source: U.S. Department of Labor, Bureau of Labor Statistics.

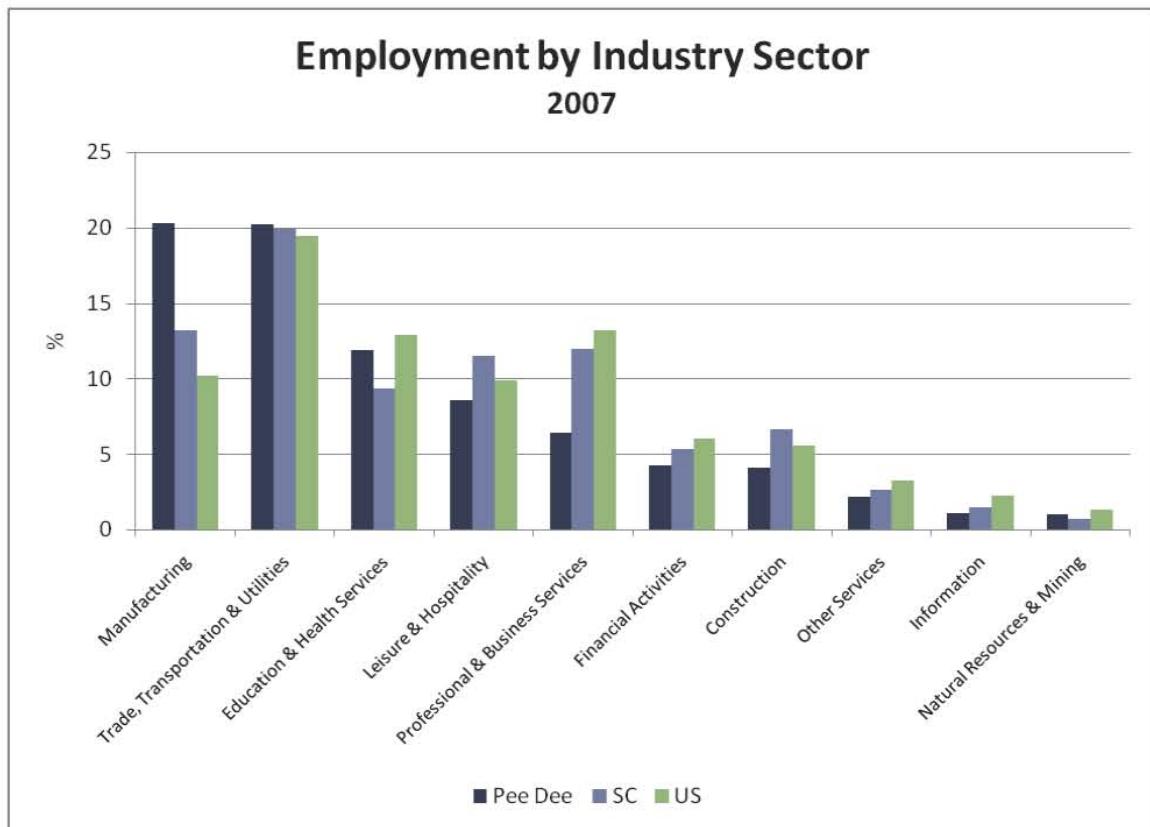
Growth in Number of Businesses

The number of private businesses in the Pee Dee area fell 13% from 2002 to 2007, compared to a 2% drop for the state.

Because the amount of detailed data varies by county, information for three-digit NAICS code sectors for the Pee Dee area as a whole is unavailable. Please see county reports for information on growth by detailed industry sectors.

Employment by Sector

Compared to South Carolina and the United States, the Pee Dee area's employment is much more concentrated in manufacturing. The area also has a higher concentration of employment in trade, transportation and utilities.



Source: U.S. Department of Labor, Bureau of Labor Statistics.

Industry Analysis

Screening Criteria

For each county in the Pee Dee area, industry sectors with available data were rated on six factors:

- 2002-2007 employment growth Competitive effect¹
- 2002-2007 employment growth rate Average annual wage
- Location quotient² Projected growth

Using those factors, sectors were awarded “stars” based on meeting the following criteria:

- 2002-2007 employment growth (Did the sector add a significant number of jobs?)
- 2002-2007 employment growth rate (Did the sector add jobs?)
- Location quotient of at least 1.25 (Does the sector have a significant concentration in the county?)
- Competitive effect greater than 0 (Did the sector add jobs beyond national growth overall and in the sector?)
- Average annual wage greater than the overall county average (Does the sector pay wages greater than average for the county?)
- Average or above average projected growth (Is the sector expected to add jobs?)

Industries of Note

Based on the analyses for each county in the Pee Dee area, the following sectors of note were identified (and the counties for which they were significant):

- Plastics and rubber products manufacturing (Chesterfield)
- Fabricated metal products manufacturing (Chesterfield, Darlington, Florence)
- Wood products manufacturing (Florence)
- Nonmetallic mineral product manufacturing (products made from sand, gravel, stone, clay and refractory materials) (Florence)
- Machinery manufacturing (Florence)
- Paper manufacturing (Florence)
- Transportation equipment manufacturing (Marion)
- Management of companies and enterprises (Florence)
- Wholesalers (Chesterfield, Darlington, Florence)
- Warehousing and storage (Florence)

¹ *Competitive Effect: based on shift-share analysis; represents the change in employment in the sector in the county after accounting for overall US employment growth and growth/decline in the sector in the US.*

² *Location Quotient: percentage of employment in the sector in the county divided by the percentage of employment in that sector in the US; gives an indication of how concentrated employment in the sector is in the county compared to the US; based on 2007 data.*

- Truck transportation (Darlington, Dillon)
- Healthcare (Florence, Marlboro)
- Forestry and logging (Marion)

See the reports for each county for information about the respective industries of note as well as other sectors in the county.

MOVING FORWARD

The South Carolina Department of Commerce appreciates the opportunity to provide this base analysis of the Pee Dee area's labor market. We hope that it will help in advancing the progress of the Pee Dee area's economic development.

What's been done so far?

This analysis identifies the region's assets—both current and future—at a macro level. Labor Market Information (LMI) at the S.C. Department of Commerce developed a Base Labor Analysis report providing an overview of the region's population, industries, occupations, and educational assets. Additionally, these findings were benchmarked against the state and the nation.

What's next?

Because local knowledge is required to interpret and apply the findings appropriately, the Pee Dee Base Labor Analysis should be used with local stakeholders to identify and define key, targeted industry clusters. Some items to consider when defining these clusters may include the following.

1. *What is the Pee Dee area's economic base?*

In order for an economy to grow, it must have a base (export) sector that generates wealth from beyond its borders. Industries in the economic base (manufacturing, scientific and technology services, warehouse and distribution, financial services, regional healthcare, etc.) typically provide occupations with higher pay and benefits as well as better human capital development and promotion opportunities. A successful economic base stimulates the development of the non-base sector (housing, schools, retail, restaurants, personal services, etc.). It also propels the local tax base which, in turn, provides support to community services.

2. *What are strategies to assist low-wage citizens in non-base economy jobs?*

Although the economic base is the driver for long-term growth in a region, implementable strategies for developing job opportunities for low-skilled individuals is a priority for community economic well-being. This need must also be kept in mind when defining target industry clusters.

3. *What other factors are vital to the Pee Dee area and its communities?*

Over and above pure economic considerations, what is important to the citizens of the Pee Dee area? How does Pee Dee want to be perceived? What quality of life issues affect Pee Dee? These questions may impact the types of industries desired for the area.

How Labor Market Information at the S.C. Department of Commerce can help.

Once local stakeholders have identified key industry clusters vital to the future economic development of the region, LMI can provide more in-depth analysis of each of these industries, their occupations, business establishments, and educational requirements.

1. Detailed Industry Analysis

For each identified industry, LMI can develop a detailed analysis of each sector, including employment, projected growth, staffing patterns, location quotients, and employers. Additionally, the analysis will examine the largest, fastest growing, and declining sectors within the industry cluster.

2. Detailed Occupational Analysis

At this point, the occupations—classified by SOC codes—that make up each of the identified industry clusters can be analyzed in detail. This analysis will include employment, average earnings, educational requirements, projected growth, and completers from available local training programs. It will culminate in identifying gaps between the number of occupations required to sustain and advance industry growth and the number of skilled workers (as identified by educational requirements and program completers) available to fulfill these positions.

3. Identification of Implementable Recommendations

LMI will utilize the findings of the analyses to develop a set of implementable recommendations. These may include recommendations to align community college programs with economic development goals along with others. Finally, local knowledge will once again be called upon to review the findings and develop an action plan for the implementation of feasible solutions.

Appendix A: Occupational Projections for the Pee Dee Area

SOC Code	Description	2007 Jobs	2016 Jobs	Change	% Change	2007 National LQ	2007 Median Hourly Earnings (\$)	Typical Education & Training Level
11-1011	Chief executives	1,071	1,283	212	20	1.01	45.89	Degree plus work experience
11-1021	General and operations managers	1,815	1,937	122	7	1.04	31.11	Degree plus work experience
11-1031	Legislators	145	158	13	9	2.46	8.27	Degree plus work experience
11-2011	Advertising and promotions managers	32	35	3	9	0.61	21.29	Degree plus work experience
11-2021	Marketing managers	83	100	17	20	0.42	25.07	Degree plus work experience
11-2022	Sales managers	189	223	34	18	0.56	31.69	Degree plus work experience
11-2031	Public relations managers	39	47	8	21	0.77	26.01	Degree plus work experience
11-3011	Administrative services managers	294	335	41	14	1.26	23.39	Degree plus work experience
11-3021	Computer and information systems managers	103	124	21	20	0.39	31.90	Degree plus work experience
11-3031	Financial managers	402	481	79	20	0.63	33.18	Degree plus work experience
11-3041	Compensation and benefits managers	49	58	9	18	0.99	28.59	Degree plus work experience
11-3042	Training and development managers	31	38	7	23	1.00	33.25	Degree plus work experience
11-3049	Human resources managers, all other	27	32	5	19	0.46	35.69	Degree plus work experience
11-3051	Industrial production managers	290	345	55	19	1.94	34.93	Work experience in a related field
11-3061	Purchasing managers	75	91	16	21	1.16	27.00	Degree plus work experience
11-3071	Transportation, storage, and distribution managers	60	72	12	20	0.62	37.30	Work experience in a related field
11-9011	Farm, ranch, and other agricultural managers	433	423	-10	-2	1.31	5.86	Degree plus work experience

SOC Code	Description	2007 Jobs	2016 Jobs	Change	% Change	2007 National LQ	2007 Median Hourly Earnings (\$)	Typical Education & Training Level
11-9012	Farmers and ranchers	2,135	2,086	-49	-2	1.32	5.85	Long-term on-the-job training
11-9021	Construction managers	618	775	157	25	0.88	17.70	Bachelor's degree
11-9031	Education administrators, preschool and child care center/program	73	72	-1	-1	0.59	9.54	Degree plus work experience
11-9032	Education administrators, elementary and secondary school	248	284	36	15	0.88	39.62	Degree plus work experience
11-9033	Education administrators, postsecondary	77	88	11	14	0.43	20.36	Degree plus work experience
11-9039	Education administrators, all other	47	54	7	15	0.51	19.83	Degree plus work experience
11-9041	Engineering managers	143	173	30	21	0.79	45.73	Degree plus work experience
11-9051	Food service managers	430	585	155	36	1.01	13.40	Work experience in a related field
11-9061	Funeral directors	25	22	-3	-12	0.94	29.83	Associate's degree
11-9081	Lodging managers	136	202	66	49	1.00	21.62	Work experience in a related field
11-9111	Medical and health services managers	378	441	63	17	1.31	33.32	Degree plus work experience
11-9131	Postmasters and mail superintendents	35	37	2	6	1.57	30.30	Work experience in a related field
11-9141	Property, real estate, and community association managers	649	935	286	44	0.59	8.25	Bachelor's degree
11-9151	Social and community service managers	87	109	22	25	0.61	13.29	Bachelor's degree
11-9199	Managers, all other	1,102	1,388	286	26	0.73	74.38	Work experience in a related field
13-1011	Agents and business managers of artists, performers, and athletes	14	19	5	36	0.36	6.61	Degree plus work experience
13-1021	Purchasing agents and buyers, farm products	12	11	-1	-8	0.79	23.76	Work experience in a related field
13-1022	Wholesale and retail buyers, except farm products	97	111	14	14	0.60	21.16	Work experience in a related field
13-1023	Purchasing agents, except wholesale, retail, and farm products	233	285	52	22	0.84	20.29	Work experience in a related field

SOC Code	Description	2007 Jobs	2016 Jobs	Change	% Change	2007 National LQ	2007 Median Hourly Earnings (\$)	Typical Education & Training Level
13-1031	Claims adjusters, examiners, and investigators	440	681	241	55	1.50	17.98	Long-term on-the-job training
13-1032	Insurance appraisers, auto damage	26	36	10	38	0.97	15.19	Long-term on-the-job training
13-1041	Compliance officers, except agriculture, construction, health and safety, and transportation	85	95	10	12	0.39	18.99	Long-term on-the-job training
13-1051	Cost estimators	124	142	18	15	0.54	23.27	Work experience in a related field
13-1061	Emergency management specialists	26	30	4	15	2.09	18.36	Work experience in a related field
13-1071	Employment, recruitment, and placement specialists	120	141	21	18	0.62	16.16	Bachelor's degree
13-1072	Compensation, benefits, and job analysis specialists	65	80	15	23	0.58	19.87	Bachelor's degree
13-1073	Training and development specialists	133	164	31	23	0.64	21.21	Bachelor's degree
13-1079	Human resources, training, and labor relations specialists, all other	65	83	18	28	0.30	21.63	Bachelor's degree
13-1081	Logisticians	38	48	10	26	0.49	24.69	Bachelor's degree
13-1111	Management analysts	341	434	93	27	0.36	15.59	Degree plus work experience
13-1121	Meeting and convention planners	71	91	20	28	0.86	9.89	Bachelor's degree
13-1199	Business operation specialists, all other	643	817	174	27	0.65	17.94	Bachelor's degree
13-2011	Accountants and auditors	863	1,054	191	22	0.58	19.85	Bachelor's degree
13-2021	Appraisers and assessors of real estate	287	395	108	38	0.72	10.56	Postsecondary vocational award
13-2031	Budget analysts	37	44	7	19	0.65	20.37	Bachelor's degree
13-2041	Credit analysts	65	64	-1	-2	1.01	21.64	Bachelor's degree
13-2051	Financial analysts	107	148	41	38	0.33	17.22	Bachelor's degree

SOC Code	Description	2007 Jobs	2016 Jobs	Change	% Change	2007 National LQ	2007 Median Hourly Earnings (\$)	Typical Education & Training Level
13-2052	Personal financial advisors	292	416	124	42	0.44	10.11	Bachelor's degree
13-2053	Insurance underwriters	114	135	21	18	1.09	17.57	Bachelor's degree
13-2071	Loan counselors	69	65	-4	-6	1.39	24.73	Bachelor's degree
13-2072	Loan officers	332	313	-19	-6	0.90	20.94	Bachelor's degree
13-2081	Tax examiners, collectors, and revenue agents	38	41	3	8	0.53	13.05	Bachelor's degree
13-2082	Tax preparers	135	139	4	3	1.21	11.22	Moderate-term on-the-job training
13-2099	Financial specialists, all other	82	74	-8	-10	0.58	14.90	Bachelor's degree
15-1011	Computer and information scientists, research	13	16	3	23	0.21	17.75	Doctoral degree
15-1021	Computer programmers	220	223	3	1	0.48	23.40	Bachelor's degree
15-1031	Computer software engineers, applications	57	77	20	35	0.11	27.85	Bachelor's degree
15-1032	Computer software engineers, systems software	40	51	11	28	0.11	32.67	Bachelor's degree
15-1041	Computer support specialists	209	246	37	18	0.39	16.33	Associate's degree
15-1051	Computer systems analysts	176	230	54	31	0.37	24.32	Bachelor's degree
15-1061	Database administrators	19	25	6	32	0.17	21.18	Bachelor's degree
15-1071	Network and computer systems administrators	94	121	27	29	0.31	24.62	Bachelor's degree
15-1081	Network systems and data communications analysts	76	111	35	46	0.28	24.91	Bachelor's degree
15-1099	Computer specialists, all other	21	25	4	19	0.10	17.64	Associate's degree
15-2031	Operations research analysts	13	15	2	15	0.23	25.29	Master's degree
17-1011	Architects, except landscape and naval	53	65	12	23	0.37	21.02	Bachelor's degree

SOC Code	Description	2007 Jobs	2016 Jobs	Change	% Change	2007 National LQ	2007 Median Hourly Earnings (\$)	Typical Education & Training Level
17-1012	Landscape architects	45	56	11	24	0.70	16.09	Bachelor's degree
17-1022	Surveyors	40	46	6	15	0.68	16.22	Bachelor's degree
17-2041	Chemical engineers	96	82	-14	-15	3.36	39.62	Bachelor's degree
17-2051	Civil engineers	128	146	18	14	0.47	25.60	Bachelor's degree
17-2071	Electrical engineers	118	144	26	22	0.80	43.52	Bachelor's degree
17-2072	Electronics engineers, except computer	44	55	11	25	0.33	35.38	Bachelor's degree
17-2081	Environmental engineers	26	28	2	8	0.50	31.48	Bachelor's degree
17-2111	Health and safety engineers, except mining safety engineers and inspectors	37	36	-1	-3	1.51	37.39	Bachelor's degree
17-2112	Industrial engineers	302	453	151	50	1.57	32.72	Bachelor's degree
17-2131	Materials engineers	33	42	9	27	1.63	32.52	Bachelor's degree
17-2141	Mechanical engineers	278	334	56	20	1.29	32.76	Bachelor's degree
17-2161	Nuclear engineers	48	59	11	23	1.85	48.79	Bachelor's degree
17-2199	Engineers, all other	50	60	10	20	0.31	26.10	Bachelor's degree
17-3011	Architectural and civil drafters	45	47	2	4	0.40	17.93	Postsecondary vocational award
17-3012	Electrical and electronics drafters	20	23	3	15	0.55	28.21	Postsecondary vocational award
17-3013	Mechanical drafters	43	59	16	37	0.58	22.35	Postsecondary vocational award
17-3022	Civil engineering technicians	18	19	1	6	0.21	20.26	Associate's degree
17-3023	Electrical and electronic engineering technicians	233	275	42	18	1.42	23.51	Associate's degree
17-3026	Industrial engineering technicians	101	140	39	39	1.43	15.06	Associate's degree

SOC Code	Description	2007 Jobs	2016 Jobs	Change	% Change	2007 National LQ	2007 Median Hourly Earnings (\$)	Typical Education & Training Level
17-3027	Mechanical engineering technicians	47	57	10	21	1.03	22.66	Associate's degree
17-3029	Engineering technicians, except drafters, all other	52	61	9	17	0.69	28.42	Associate's degree
17-3031	Surveying and mapping technicians	57	66	9	16	0.71	15.60	Moderate-term on-the-job training
19-1031	Conservation scientists	22	23	1	5	0.98	16.14	Bachelor's degree
19-1032	Foresters	23	25	2	9	1.49	19.83	Bachelor's degree
19-2031	Chemists	67	69	2	3	0.84	27.19	Bachelor's degree
19-2041	Environmental scientists and specialists, including health	22	26	4	18	0.24	17.08	Master's degree
19-2042	Geoscientists, except hydrologists and geographers	19	23	4	21	0.46	14.97	Master's degree
19-2043	Hydrologists	10	12	2	20	--	--	Master's degree
19-2099	Physical scientists, all other	10	10	0	0	0.32	54.59	Bachelor's degree
19-3021	Market research analysts	69	80	11	16	0.27	17.22	Bachelor's degree
19-3022	Survey researchers	29	32	3	10	0.45	11.35	Bachelor's degree
19-3031	Clinical, counseling, and school psychologists	126	155	29	23	0.75	21.59	Doctoral degree
19-3032	Industrial-organizational psychologists	48	69	21	44	0.67	21.69	Master's degree
19-3039	Psychologists, all other	51	72	21	41	0.66	21.86	Master's degree
19-3051	Urban and regional planners	10	12	2	20	0.33	22.29	Master's degree
19-4011	Agricultural and food science technicians	12	13	1	8	0.53	9.61	Associate's degree
19-4031	Chemical technicians	180	150	-30	-17	3.08	26.05	Associate's degree
19-4051	Nuclear technicians	19	24	5	26	2.77	35.06	Associate's degree
19-4091	Environmental science and protection technicians, including health	20	23	3	15	0.56	17.62	Associate's degree

SOC Code	Description	2007 Jobs	2016 Jobs	Change	% Change	2007 National LQ	2007 Median Hourly Earnings (\$)	Typical Education & Training Level
19-4099	Life, physical, and social science technicians, all other	11	13	2	18	0.19	18.41	Associate's degree
21-1011	Substance abuse and behavioral disorder counselors	63	92	29	46	0.70	16.80	Master's degree
21-1012	Educational, vocational, and school counselors	273	319	46	17	1.10	19.73	Master's degree
21-1013	Marriage and family therapists	23	27	4	17	0.64	14.65	Master's degree
21-1014	Mental health counselors	37	50	13	35	0.35	13.66	Master's degree
21-1015	Rehabilitation counselors	188	242	54	29	1.34	13.73	Master's degree
21-1019	Counselors, all other	22	26	4	18	0.58	12.67	Master's degree
21-1021	Child, family, and school social workers	691	800	109	16	2.43	13.93	Bachelor's degree
21-1022	Medical and public health social workers	202	242	40	20	1.62	14.60	Bachelor's degree
21-1023	Mental health and substance abuse social workers	171	249	78	46	1.35	12.48	Master's degree
21-1029	Social workers, all other	143	171	28	20	2.00	15.63	Bachelor's degree
21-1091	Health educators	63	77	14	22	1.04	18.15	Master's degree
21-1092	Probation officers and correctional treatment specialists	81	93	12	15	0.93	19.15	Bachelor's degree
21-1093	Social and human service assistants	339	445	106	31	1.00	10.37	Moderate-term on-the-job training
21-1099	Community and social service specialists, all other	72	88	16	22	0.61	11.74	Bachelor's degree
21-2011	Clergy	317	328	11	3	1.35	6.73	Master's degree
21-2021	Directors, religious activities and education	118	122	4	3	1.33	6.16	Bachelor's degree
21-2099	Religious workers, all other	51	52	1	2	1.30	6.00	Bachelor's degree
23-1011	Lawyers	353	460	107	30	0.43	29.74	First professional degree
23-1022	Arbitrators, mediators, and conciliators	10	12	2	20	1.29	17.48	Degree plus work experience
23-1023	Judges, magistrate judges, and magistrates	90	100	10	11	3.68	24.83	Degree plus work experience

SOC Code	Description	2007 Jobs	2016 Jobs	Change	% Change	2007 National LQ	2007 Median Hourly Earnings (\$)	Typical Education & Training Level
23-2011	Paralegals and legal assistants	95	119	24	25	0.41	16.28	Associate's degree
23-2091	Court reporters	20	26	6	30	0.64	11.86	Postsecondary vocational award
23-2092	Law clerks	40	46	6	15	0.86	13.80	Bachelor's degree
23-2093	Title examiners, abstractors, and searchers	38	44	6	16	0.49	12.92	Moderate-term on-the-job training
23-2099	Legal support workers, all other	22	29	7	32	0.41	11.62	Bachelor's degree
25-1099	Postsecondary teachers	835	1,041	206	25	0.57	46.03	Doctoral degree
25-2011	Preschool teachers, except special education	313	327	14	4	0.64	8.75	Postsecondary vocational award
25-2012	Kindergarten teachers, except special education	366	441	75	20	2.05	24.99	Bachelor's degree
25-2021	Elementary school teachers, except special education	1,638	1,925	287	18	1.05	24.30	Bachelor's degree
25-2022	Middle school teachers, except special and vocational education	907	1,043	136	15	1.33	24.87	Bachelor's degree
25-2023	Vocational education teachers, middle school	37	39	2	5	0.88	13.05	Degree plus work experience
25-2031	Secondary school teachers, except special and vocational education	855	944	89	10	0.82	25.45	Bachelor's degree
25-2032	Vocational education teachers, secondary school	146	147	1	1	1.40	42.03	Degree plus work experience
25-2041	Special education teachers, preschool, kindergarten, and elementary school	202	248	46	23	0.92	35.97	Bachelor's degree
25-2042	Special education teachers, middle school	141	169	28	20	1.39	26.21	Bachelor's degree
25-2043	Special education teachers, secondary school	87	98	11	13	0.63	36.39	Bachelor's degree
25-3011	Adult literacy, remedial education, and GED teachers and instructors	81	106	25	31	0.58	8.51	Bachelor's degree
25-3021	Self-enrichment education teachers	179	218	39	22	0.71	12.22	Work experience in a related field
25-3099	Teachers and instructors, all other	323	379	56	17	0.50	12.23	Bachelor's degree

SOC Code	Description	2007 Jobs	2016 Jobs	Change	% Change	2007 National LQ	2007 Median Hourly Earnings (\$)	Typical Education & Training Level
25-4021	Librarians	162	177	15	9	1.05	19.96	Master's degree
25-4031	Library technicians	92	107	15	16	0.80	8.87	Postsecondary vocational award
25-9021	Farm and home management advisors	13	14	1	8	0.49	17.25	Bachelor's degree
25-9031	Instructional coordinators	132	163	31	23	0.99	28.35	Master's degree
25-9041	Teacher assistants	1,588	1,754	166	10	1.18	9.42	Short-term on-the-job training
25-9099	Education, training, and library workers, all other	19	21	2	11	0.19	11.92	Bachelor's degree
27-1011	Art directors	47	62	15	32	0.38	9.18	Degree plus work experience
27-1012	Craft artists	41	54	13	32	0.44	6.82	Long-term on-the-job training
27-1013	Fine artists, including painters, sculptors, and illustrators	44	58	14	32	0.44	7.53	Long-term on-the-job training
27-1014	Multi-media artists and animators	46	62	16	35	0.40	8.45	Bachelor's degree
27-1019	Artists and related workers, all other	45	58	13	29	0.47	7.22	Long-term on-the-job training
27-1021	Commercial and industrial designers	42	54	12	29	0.60	11.08	Bachelor's degree
27-1022	Fashion designers	31	41	10	32	0.60	12.51	Associate's degree
27-1023	Floral designers	72	67	-5	-7	0.75	9.68	Moderate-term on-the-job training
27-1024	Graphic designers	68	81	13	19	0.29	14.37	Bachelor's degree
27-1025	Interior designers	41	49	8	20	0.46	10.99	Associate's degree
27-1026	Merchandise displayers and window trimmers	61	72	11	18	0.62	10.63	Moderate-term on-the-job training
27-1027	Set and exhibit designers	34	46	12	35	0.75	11.88	Bachelor's degree
27-1029	Designers, all other	35	45	10	29	0.72	12.53	Bachelor's degree

SOC Code	Description	2007 Jobs	2016 Jobs	Change	% Change	2007 National LQ	2007 Median Hourly Earnings (\$)	Typical Education & Training Level
27-2011	Actors	29	33	4	14	0.30	8.89	Long-term on-the-job training
27-2012	Producers and directors	31	40	9	29	0.27	12.49	Degree plus work experience
27-2021	Athletes and sports competitors	20	26	6	30	0.50	9.16	Long-term on-the-job training
27-2022	Coaches and scouts	77	91	14	18	0.42	18.17	Long-term on-the-job training
27-2023	Umpires, referees, and other sports officials	21	26	5	24	0.51	8.30	Long-term on-the-job training
27-2032	Choreographers	19	21	2	11	0.79	13.75	Work experience in a related field
27-2041	Music directors and composers	89	109	20	22	0.58	6.32	Degree plus work experience
27-2042	Musicians and singers	152	172	20	13	0.71	6.98	Long-term on-the-job training
27-2099	Entertainers and performers, sports and related workers, all other	35	37	2	6	0.29	6.62	Long-term on-the-job training
27-3011	Radio and television announcers	27	29	2	7	0.50	10.17	Long-term on-the-job training
27-3012	Public address system and other announcers	12	13	1	8	0.55	10.81	Long-term on-the-job training
27-3021	Broadcast news analysts	11	12	1	9	0.67	16.33	Degree plus work experience
27-3022	Reporters and correspondents	24	30	6	25	0.38	15.73	Degree plus work experience
27-3031	Public relations specialists	119	146	27	23	0.47	13.90	Bachelor's degree
27-3041	Editors	49	61	12	24	0.34	13.81	Bachelor's degree
27-3042	Technical writers	15	19	4	27	0.27	20.96	Bachelor's degree
27-3043	Writers and authors	129	172	43	33	0.35	6.49	Bachelor's degree
27-3091	Interpreters and translators	64	60	-4	-6	0.47	12.44	Long-term on-the-job training
27-3099	Media and communication workers, all other	58	52	-6	-10	0.45	11.91	Long-term on-the-job training

SOC Code	Description	2007 Jobs	2016 Jobs	Change	% Change	2007 National LQ	2007 Median Hourly Earnings (\$)	Typical Education & Training Level
27-4011	Audio and video equipment technicians	14	18	4	29	0.30	11.74	Long-term on-the-job training
27-4012	Broadcast technicians	19	19	0	0	0.51	10.79	Associate's degree
27-4021	Photographers	345	311	-34	-10	0.49	10.00	Long-term on-the-job training
27-4099	Media and communication equipment workers, all other	15	17	2	13	0.68	16.64	Moderate-term on-the-job training
29-1011	Chiropractors	68	91	23	34	1.24	30.44	First professional degree
29-1021	Dentists, general	89	94	5	6	0.95	83.47	First professional degree
29-1031	Dietitians and nutritionists	67	76	9	13	1.01	21.08	Bachelor's degree
29-1041	Optometrists	26	30	4	15	0.57	32.30	First professional degree
29-1051	Pharmacists	253	344	91	36	1.08	48.25	First professional degree
29-1069	Physicians and surgeons	802	943	141	18	1.02	91.67	First professional degree
29-1071	Physician assistants	32	40	8	25	0.51	37.16	Bachelor's degree
29-1081	Podiatrists	26	34	8	31	0.76	28.88	First professional degree
29-1111	Registered nurses	2,873	3,475	602	21	1.22	25.18	Associate's degree
29-1121	Audiologists	14	17	3	21	0.86	28.70	First professional degree
29-1122	Occupational therapists	111	135	24	22	1.12	26.78	Master's degree
29-1123	Physical therapists	173	218	45	26	0.94	33.30	Master's degree
29-1125	Recreational therapists	28	29	1	4	1.18	7.87	Bachelor's degree
29-1126	Respiratory therapists	103	124	21	20	1.08	29.01	Associate's degree
29-1127	Speech-language pathologists	196	223	27	14	1.58	20.89	Master's degree
29-1129	Therapists, all other	33	44	11	33	0.62	15.77	Bachelor's degree

SOC Code	Description	2007 Jobs	2016 Jobs	Change	% Change	2007 National LQ	2007 Median Hourly Earnings (\$)	Typical Education & Training Level
29-1131	Veterinarians	49	63	14	29	0.75	38.60	First professional degree
29-1199	Health diagnosing and treating practitioners, all other	85	105	20	24	0.91	22.49	Bachelor's degree
29-2011	Medical and clinical laboratory technologists	148	160	12	8	0.94	20.44	Bachelor's degree
29-2012	Medical and clinical laboratory technicians	185	206	21	11	1.30	13.27	Associate's degree
29-2021	Dental hygienists	145	181	36	25	0.90	21.04	Associate's degree
29-2031	Cardiovascular technologists and technicians	66	81	15	23	1.54	19.12	Associate's degree
29-2032	Diagnostic medical sonographers	39	45	6	15	0.88	33.84	Associate's degree
29-2033	Nuclear medicine technologists	30	33	3	10	1.52	39.28	Associate's degree
29-2034	Radiologic technologists and technicians	255	286	31	12	1.38	22.51	Associate's degree
29-2041	Emergency medical technicians and paramedics	386	489	103	27	2.02	11.56	Postsecondary vocational award
29-2051	Dietetic technicians	34	38	4	12	1.42	14.21	Moderate-term on-the-job training
29-2052	Pharmacy technicians	356	456	100	28	1.31	10.70	Moderate-term on-the-job training
29-2053	Psychiatric technicians	15	17	2	13	0.26	15.23	Moderate-term on-the-job training
29-2054	Respiratory therapy technicians	125	122	-3	-2	6.91	18.97	Associate's degree
29-2055	Surgical technologists	149	179	30	20	1.85	21.82	Postsecondary vocational award
29-2056	Veterinary technologists and technicians	37	49	12	32	0.54	16.12	Associate's degree
29-2061	Licensed practical and licensed vocational nurses	1,194	1,319	125	10	1.70	16.90	Postsecondary vocational award

SOC Code	Description	2007 Jobs	2016 Jobs	Change	% Change	2007 National LQ	2007 Median Hourly Earnings (\$)	Typical Education & Training Level
29-2071	Medical records and health information technicians	203	234	31	15	1.27	11.37	Associate's degree
29-2081	Opticians, dispensing	75	83	8	11	0.96	15.02	Long-term on-the-job training
29-2091	Orthotists and prosthetists	19	21	2	11	1.50	26.01	Bachelor's degree
29-2099	Healthcare technologists and technicians, all other	46	52	6	13	0.59	17.66	Postsecondary vocational award
29-9011	Occupational health and safety specialists	48	53	5	10	1.15	20.36	Bachelor's degree
29-9012	Occupational health and safety technicians	12	14	2	17	1.14	21.06	Postsecondary vocational award
29-9091	Athletic trainers	16	18	2	13	1.01	23.14	Bachelor's degree
31-1011	Home health aides	1,497	2,096	599	40	1.85	8.35	Short-term on-the-job training
31-1012	Nursing aides, orderlies, and attendants	2,183	2,458	275	13	1.56	8.60	Postsecondary vocational award
31-1013	Psychiatric aides	104	140	36	35	0.85	9.72	Short-term on-the-job training
31-2011	Occupational therapist assistants	21	25	4	19	0.91	16.25	Associate's degree
31-2012	Occupational therapist aides	17	21	4	24	2.26	7.37	Short-term on-the-job training
31-2021	Physical therapist assistants	68	85	17	25	1.19	21.48	Associate's degree
31-2022	Physical therapist aides	22	26	4	18	0.51	8.21	Short-term on-the-job training
31-9011	Massage therapists	92	62	-30	-33	0.99	7.11	Postsecondary vocational award
31-9091	Dental assistants	164	204	40	24	0.61	12.32	Moderate-term on-the-job training
31-9092	Medical assistants	298	390	92	31	0.73	10.92	Moderate-term on-the-job training
31-9093	Medical equipment preparers	47	56	9	19	0.93	12.65	Short-term on-the-job training

SOC Code	Description	2007 Jobs	2016 Jobs	Change	% Change	2007 National LQ	2007 Median Hourly Earnings (\$)	Typical Education & Training Level
31-9094	Medical transcriptionists	117	132	15	13	1.25	14.92	Postsecondary vocational award
31-9095	Pharmacy aides	57	63	6	11	1.01	9.13	Short-term on-the-job training
31-9096	Veterinary assistants and laboratory animal caretakers	60	72	12	20	0.76	10.00	Short-term on-the-job training
31-9099	Healthcare support workers, all other	204	235	31	15	1.08	9.68	Short-term on-the-job training
33-1011	First-line supervisors/managers of correctional officers	12	14	2	17	0.35	27.08	Work experience in a related field
33-1012	First-line supervisors/managers of police and detectives	47	55	8	17	0.55	22.86	Work experience in a related field
33-1021	First-line supervisors/managers of fire fighting and prevention workers	30	36	6	20	0.62	26.82	Work experience in a related field
33-1099	First-line supervisors/managers, protective service workers, all other	28	33	5	18	0.57	20.73	Work experience in a related field
33-2011	Fire fighters	186	222	36	19	0.68	12.47	Long-term on-the-job training
33-3011	Bailiffs	14	17	3	21	0.84	11.37	Moderate-term on-the-job training
33-3012	Correctional officers and jailers	819	965	146	18	2.04	13.22	Moderate-term on-the-job training
33-3021	Detectives and criminal investigators	124	155	31	25	1.26	16.51	Work experience in a related field
33-3051	Police and sheriff's patrol officers	599	710	111	19	0.98	14.58	Long-term on-the-job training
33-9011	Animal control workers	12	15	3	25	0.85	16.00	Moderate-term on-the-job training
33-9021	Private detectives and investigators	44	61	17	39	0.69	12.65	Work experience in a related field
33-9031	Gaming surveillance officers and gaming investigators	10	15	5	50	0.62	10.44	Moderate-term on-the-job training
33-9032	Security guards	654	798	144	22	0.66	9.94	Short-term on-the-job training

SOC Code	Description	2007 Jobs	2016 Jobs	Change	% Change	2007 National LQ	2007 Median Hourly Earnings (\$)	Typical Education & Training Level
33-9091	Crossing guards	25	27	2	8	0.39	10.90	Short-term on-the-job training
33-9092	Lifeguards, ski patrol, and other recreational protective service workers	69	79	10	14	0.60	9.78	Short-term on-the-job training
33-9099	Protective service workers, all other	30	35	5	17	0.38	13.75	Short-term on-the-job training
35-1011	Chefs and head cooks	137	151	14	10	1.11	12.63	Work experience in a related field
35-1012	First-line supervisors/managers of food preparation and serving workers	880	980	100	11	1.07	10.66	Work experience in a related field
35-2011	Cooks, fast food	1,625	1,752	127	8	2.70	6.57	Short-term on-the-job training
35-2012	Cooks, institution and cafeteria	583	632	49	8	1.49	6.80	Moderate-term on-the-job training
35-2013	Cooks, private household	15	21	6	40	1.29	11.74	Long-term on-the-job training
35-2014	Cooks, restaurant	555	563	8	1	0.69	7.59	Long-term on-the-job training
35-2015	Cooks, short order	284	286	2	1	1.47	7.01	Short-term on-the-job training
35-2019	Cooks, all other	15	21	6	40	0.68	12.46	Moderate-term on-the-job training
35-2021	Food preparation workers	1,208	1,336	128	11	1.40	12.26	Short-term on-the-job training
35-3011	Bartenders	166	171	5	3	0.34	6.90	Short-term on-the-job training
35-3021	Combined food preparation and serving workers, including fast food	2,277	2,658	381	17	0.96	6.45	Short-term on-the-job training
35-3022	Counter attendants, cafeteria, food concession, and coffee shop	308	335	27	9	0.60	7.63	Short-term on-the-job training
35-3031	Waiters and waitresses	1,517	1,529	12	1	0.67	6.51	Short-term on-the-job training
35-3041	Food servers, nonrestaurant	153	166	13	8	0.86	7.30	Short-term on-the-job training
35-9011	Dining room and cafeteria attendants and bartender helpers	172	180	8	5	0.43	6.38	Short-term on-the-job training

SOC Code	Description	2007 Jobs	2016 Jobs	Change	% Change	2007 National LQ	2007 Median Hourly Earnings (\$)	Typical Education & Training Level
35-9021	Dishwashers	370	375	5	1	0.75	6.42	Short-term on-the-job training
35-9031	Hosts and hostesses, restaurant, lounge, and coffee shop	218	220	2	1	0.65	6.84	Short-term on-the-job training
37-1011	First-line supervisors/managers of housekeeping and janitorial workers	405	540	135	33	1.11	10.17	Work experience in a related field
37-1012	First-line supervisors/managers of landscaping, lawn service, and groundskeeping workers	159	216	57	36	1.10	11.05	Work experience in a related field
37-2011	Janitors and cleaners, except maids and housekeeping cleaners	2,865	3,727	862	30	1.30	7.48	Short-term on-the-job training
37-2012	Maids and housekeeping cleaners	2,513	3,152	639	25	1.45	6.36	Short-term on-the-job training
37-2019	Building cleaning workers, all other	439	634	195	44	0.93	7.00	Short-term on-the-job training
37-2021	Pest control workers	224	309	85	38	2.47	12.40	Moderate-term on-the-job training
37-3011	Landscaping and groundskeeping workers	883	1,061	178	20	0.89	7.68	Short-term on-the-job training
37-3012	Pesticide handlers, sprayers, and applicators, vegetation	177	264	87	49	1.79	6.38	Moderate-term on-the-job training
37-3013	Tree trimmers and pruners	161	245	84	52	1.61	6.13	Short-term on-the-job training
37-3019	Grounds maintenance workers, all other	175	262	87	50	1.84	6.23	Short-term on-the-job training
39-1011	Gaming supervisors	14	18	4	29	0.35	9.23	Work experience in a related field
39-1012	Slot key persons	15	18	3	20	0.46	9.11	Postsecondary vocational award
39-1021	First-line supervisors/managers of personal service workers	251	217	-34	-14	1.08	11.34	Work experience in a related field
39-2011	Animal trainers	129	116	-13	-10	1.43	7.20	Moderate-term on-the-job training
39-2021	Nonfarm animal caretakers	354	220	-134	-38	1.00	6.46	Short-term on-the-job training

SOC Code	Description	2007 Jobs	2016 Jobs	Change	% Change	2007 National LQ	2007 Median Hourly Earnings (\$)	Typical Education & Training Level
39-3011	Gaming dealers	10	13	3	30	0.13	7.49	Postsecondary vocational award
39-3012	Gaming and sports book writers and runners	30	31	1	3	1.46	8.02	Short-term on-the-job training
39-3031	Ushers, lobby attendants, and ticket takers	33	34	1	3	0.34	7.90	Short-term on-the-job training
39-3091	Amusement and recreation attendants	114	134	20	18	0.49	7.15	Short-term on-the-job training
39-4021	Funeral attendants	150	171	21	14	4.87	9.19	Short-term on-the-job training
39-5011	Barbers	63	23	-40	-63	1.35	6.16	Postsecondary vocational award
39-5012	Hairdressers, hairstylists, and cosmetologists	538	322	-216	-40	1.00	8.19	Postsecondary vocational award
39-5092	Manicurists and pedicurists	27	16	-11	-41	0.47	7.55	Postsecondary vocational award
39-5094	Skin care specialists	23	13	-10	-43	0.67	7.66	Postsecondary vocational award
39-6021	Tour guides and escorts	20	25	5	25	0.51	9.81	Moderate-term on-the-job training
39-6022	Travel guides	10	13	3	30	0.76	12.06	Moderate-term on-the-job training
39-6031	Flight attendants	21	37	16	76	0.23	19.32	Long-term on-the-job training
39-9011	Child care workers	1,572	1,854	282	18	1.01	6.09	Short-term on-the-job training
39-9021	Personal and home care aides	1,184	1,801	617	52	1.44	8.81	Short-term on-the-job training
39-9031	Fitness trainers and aerobics instructors	154	172	18	12	0.61	8.62	Postsecondary vocational award
39-9032	Recreation workers	202	228	26	13	0.60	8.80	Short-term on-the-job training
39-9041	Residential advisors	34	40	6	18	0.66	11.55	Moderate-term on-the-job training

SOC Code	Description	2007 Jobs	2016 Jobs	Change	% Change	2007 National LQ	2007 Median Hourly Earnings (\$)	Typical Education & Training Level
39-9099	Personal care and service workers, all other	85	44	-41	-48	0.75	6.86	Short-term on-the-job training
41-1011	First-line supervisors/managers of retail sales workers	3,135	3,577	442	14	1.47	16.51	Work experience in a related field
41-1012	First-line supervisors/managers of non-retail sales workers	689	861	172	25	0.78	22.99	Work experience in a related field
41-2011	Cashiers, except gaming	4,971	4,943	-28	-1	1.47	7.16	Short-term on-the-job training
41-2012	Gaming change persons and booth cashiers	63	75	12	19	1.05	24.16	Short-term on-the-job training
41-2021	Counter and rental clerks	520	628	108	21	1.13	8.86	Short-term on-the-job training
41-2022	Parts salespersons	384	372	-12	-3	1.69	11.76	Moderate-term on-the-job training
41-2031	Retail salespersons	4,376	4,867	491	11	0.92	10.10	Short-term on-the-job training
41-3011	Advertising sales agents	88	112	24	27	0.41	10.47	Moderate-term on-the-job training
41-3021	Insurance sales agents	858	990	132	15	1.23	13.78	Bachelor's degree
41-3031	Securities, commodities, and financial services sales agents	173	229	56	32	0.27	15.87	Bachelor's degree
41-3041	Travel agents	34	43	9	26	0.31	10.66	Postsecondary vocational award
41-3099	Sales representatives, services, all other	259	337	78	30	0.38	11.82	Moderate-term on-the-job training
41-4011	Sales representatives, wholesale and manufacturing, technical and scientific products	275	327	52	19	0.55	50.34	Moderate-term on-the-job training
41-4012	Sales representatives, wholesale and manufacturing, except technical and scientific products	1,370	1,638	268	20	0.88	28.93	Moderate-term on-the-job training
41-9011	Demonstrators and product promoters	46	55	9	20	0.38	9.02	Moderate-term on-the-job training

SOC Code	Description	2007 Jobs	2016 Jobs	Change	% Change	2007 National LQ	2007 Median Hourly Earnings (\$)	Typical Education & Training Level
41-9012	Models	23	28	5	22	0.61	6.03	Moderate-term on-the-job training
41-9021	Real estate brokers	998	1,457	459	46	0.62	7.33	Work experience in a related field
41-9022	Real estate sales agents	1,121	1,582	461	41	0.65	7.87	Postsecondary vocational award
41-9031	Sales engineers	11	13	2	18	0.15	30.94	Bachelor's degree
41-9041	Telemarketers	55	61	6	11	0.14	9.37	Short-term on-the-job training
41-9091	Door-to-door sales workers, news and street vendors, and related workers	727	869	142	20	0.68	5.87	Short-term on-the-job training
41-9099	Sales and related workers, all other	184	213	29	16	0.54	8.58	Moderate-term on-the-job training
43-1011	First-line supervisors/managers of office and administrative support workers	1,374	1,521	147	11	0.94	18.58	Work experience in a related field
43-2011	Switchboard operators, including answering service	145	135	-10	-7	0.84	10.06	Short-term on-the-job training
43-2021	Telephone operators	47	30	-17	-36	1.61	13.04	Short-term on-the-job training
43-3011	Bill and account collectors	392	492	100	26	0.93	10.77	Short-term on-the-job training
43-3021	Billing and posting clerks and machine operators	626	679	53	8	1.21	11.62	Moderate-term on-the-job training
43-3031	Bookkeeping, accounting, and auditing clerks	1,800	2,111	311	17	0.83	12.61	Moderate-term on-the-job training
43-3051	Payroll and timekeeping clerks	238	260	22	9	1.16	12.97	Moderate-term on-the-job training
43-3061	Procurement clerks	56	60	4	7	0.77	14.39	Short-term on-the-job training
43-3071	Tellers	555	681	126	23	0.94	13.08	Short-term on-the-job training

SOC Code	Description	2007 Jobs	2016 Jobs	Change	% Change	2007 National LQ	2007 Median Hourly Earnings (\$)	Typical Education & Training Level
43-4011	Brokerage clerks	69	78	9	13	0.95	15.79	Moderate-term on-the-job training
43-4021	Correspondence clerks	13	15	2	15	0.75	11.69	Short-term on-the-job training
43-4031	Court, municipal, and license clerks	117	135	18	15	1.12	13.54	Short-term on-the-job training
43-4041	Credit authorizers, checkers, and clerks	69	62	-7	-10	1.06	11.92	Short-term on-the-job training
43-4051	Customer service representatives	1,193	1,540	347	29	0.55	13.09	Moderate-term on-the-job training
43-4061	Eligibility interviewers, government programs	17	19	2	12	0.17	15.08	Moderate-term on-the-job training
43-4071	File clerks	144	100	-44	-31	0.63	8.71	Short-term on-the-job training
43-4081	Hotel, motel, and resort desk clerks	346	361	15	4	1.64	8.21	Short-term on-the-job training
43-4111	Interviewers, except eligibility and loan	227	257	30	13	0.99	10.14	Short-term on-the-job training
43-4121	Library assistants, clerical	39	45	6	15	0.36	7.96	Short-term on-the-job training
43-4131	Loan interviewers and clerks	435	372	-63	-14	1.74	16.26	Short-term on-the-job training
43-4141	New accounts clerks	90	83	-7	-8	1.15	17.27	Work experience in a related field
43-4151	Order clerks	133	122	-11	-8	0.52	12.66	Short-term on-the-job training
43-4161	Human resources assistants, except payroll and timekeeping	198	236	38	19	1.25	14.27	Short-term on-the-job training
43-4171	Receptionists and information clerks	947	1,085	138	15	0.84	9.16	Short-term on-the-job training
43-4181	Reservation and transportation ticket agents and travel clerks	97	97	0	0	0.61	11.52	Short-term on-the-job training
43-4199	Information and record clerks, all other	102	97	-5	-5	0.45	11.13	Short-term on-the-job training

SOC Code	Description	2007 Jobs	2016 Jobs	Change	% Change	2007 National LQ	2007 Median Hourly Earnings (\$)	Typical Education & Training Level
43-5011	Cargo and freight agents	14	17	3	21	0.17	18.65	Moderate-term on-the-job training
43-5021	Couriers and messengers	143	158	15	10	0.48	14.43	Short-term on-the-job training
43-5031	Police, fire, and ambulance dispatchers	124	149	25	20	1.29	11.45	Moderate-term on-the-job training
43-5032	Dispatchers, except police, fire, and ambulance	200	212	12	6	1.09	13.66	Moderate-term on-the-job training
43-5041	Meter readers, utilities	112	120	8	7	2.52	15.58	Short-term on-the-job training
43-5051	Postal service clerks	65	70	5	8	0.86	21.60	Short-term on-the-job training
43-5052	Postal service mail carriers	340	367	27	8	1.07	21.05	Short-term on-the-job training
43-5053	Postal service mail sorters, processors, and processing machine operators	162	161	-1	-1	0.85	20.21	Short-term on-the-job training
43-5061	Production, planning, and expediting clerks	259	320	61	24	0.92	16.56	Short-term on-the-job training
43-5071	Shipping, receiving, and traffic clerks	661	781	120	18	0.90	11.44	Short-term on-the-job training
43-5081	Stock clerks and order fillers	1,297	1,282	-15	-1	0.78	9.08	Short-term on-the-job training
43-5111	Weighers, measurers, checkers, and samplers, recordkeeping	117	109	-8	-7	1.53	11.91	Short-term on-the-job training
43-6011	Executive secretaries and administrative assistants	1,028	1,197	169	16	0.63	15.37	Moderate-term on-the-job training
43-6012	Legal secretaries	284	332	48	17	0.81	14.46	Postsecondary vocational award
43-6013	Medical secretaries	517	601	84	16	1.10	12.10	Postsecondary vocational award
43-6014	Secretaries, except legal, medical, and executive	1,995	2,071	76	4	1.03	11.47	Moderate-term on-the-job training

SOC Code	Description	2007 Jobs	2016 Jobs	Change	% Change	2007 National LQ	2007 Median Hourly Earnings (\$)	Typical Education & Training Level
43-9011	Computer operators	75	62	-13	-17	0.60	16.61	Moderate-term on-the-job training
43-9021	Data entry keyers	313	325	12	4	0.93	10.42	Moderate-term on-the-job training
43-9022	Word processors and typists	82	92	10	12	0.44	9.97	Moderate-term on-the-job training
43-9031	Desktop publishers	22	30	8	36	0.49	11.66	Postsecondary vocational award
43-9041	Insurance claims and policy processing clerks	190	228	38	20	0.75	14.86	Moderate-term on-the-job training
43-9051	Mail clerks and mail machine operators, except postal service	50	49	-1	-2	0.33	9.13	Short-term on-the-job training
43-9061	Office clerks, general	2,490	2,860	370	15	0.79	9.63	Short-term on-the-job training
43-9071	Office machine operators, except computer	18	20	2	11	0.20	11.36	Short-term on-the-job training
43-9081	Proofreaders and copy markers	21	25	4	19	1.03	11.30	Short-term on-the-job training
43-9199	Office and administrative support workers, all other	103	109	6	6	0.34	9.84	Short-term on-the-job training
45-1099	Supervisors, farming, fishing, and forestry workers	72	91	19	26	1.76	20.12	Work experience in a related field
45-2011	Agricultural inspectors	63	70	7	11	4.16	17.43	Work experience in a related field
45-2041	Graders and sorters, agricultural products	165	173	8	5	2.95	10.47	Work experience in a related field
45-2091	Agricultural equipment operators	94	124	30	32	3.32	9.22	Moderate-term on-the-job training
45-2092	Farmworkers and laborers, crop, nursery, and greenhouse	323	414	91	28	1.12	8.87	Short-term on-the-job training
45-2093	Farmworkers, farm and ranch animals	22	26	4	18	0.41	8.76	Short-term on-the-job training

SOC Code	Description	2007 Jobs	2016 Jobs	Change	% Change	2007 National LQ	2007 Median Hourly Earnings (\$)	Typical Education & Training Level
45-2099	Agricultural workers, all other	30	37	7	23	2.19	10.20	Short-term on-the-job training
45-3011	Fishers and related fishing workers	46	55	9	20	0.49	6.13	Moderate-term on-the-job training
45-4011	Forest and conservation workers	19	21	2	11	1.86	14.75	Moderate-term on-the-job training
45-4021	Fallers	47	59	12	26	2.22	19.19	Moderate-term on-the-job training
45-4022	Logging equipment operators	138	165	27	20	3.35	15.82	Moderate-term on-the-job training
45-4023	Log graders and scalers	35	47	12	34	1.96	20.94	Moderate-term on-the-job training
45-4029	Logging workers, all other	24	36	12	50	1.23	24.39	Moderate-term on-the-job training
47-1011	First-line supervisors/managers of construction trades and extraction workers	885	1,038	153	17	0.85	19.43	Work experience in a related field
47-2021	Brickmasons and blockmasons	95	96	1	1	0.63	15.20	Long-term on-the-job training
47-2022	Stonemasons	40	50	10	25	0.76	16.57	Long-term on-the-job training
47-2031	Carpenters	1,341	1,558	217	16	0.80	14.96	Long-term on-the-job training
47-2041	Carpet installers	34	43	9	26	0.55	15.89	Moderate-term on-the-job training
47-2042	Floor layers, except carpet, wood, and hard tiles	34	42	8	24	0.83	15.44	Moderate-term on-the-job training
47-2043	Floor sanders and finishers	31	38	7	23	0.91	15.88	Moderate-term on-the-job training

SOC Code	Description	2007 Jobs	2016 Jobs	Change	% Change	2007 National LQ	2007 Median Hourly Earnings (\$)	Typical Education & Training Level
47-2044	Tile and marble setters	74	89	15	20	0.96	13.45	Long-term on-the-job training
47-2051	Cement masons and concrete finishers	93	108	15	16	0.41	12.86	Moderate-term on-the-job training
47-2053	Terrazzo workers and finishers	10	12	2	20	--	--	Long-term on-the-job training
47-2061	Construction laborers	920	1,070	150	16	0.67	12.41	Moderate-term on-the-job training
47-2071	Paving, surfacing, and tamping equipment operators	76	83	7	9	1.19	13.54	Moderate-term on-the-job training
47-2072	Pile-driver operators	26	34	8	31	0.87	15.48	Moderate-term on-the-job training
47-2073	Operating engineers and other construction equipment operators	431	500	69	16	1.04	13.99	Moderate-term on-the-job training
47-2081	Drywall and ceiling tile installers	112	123	11	10	0.64	13.78	Moderate-term on-the-job training
47-2082	Tapers	41	52	11	27	0.56	16.77	Moderate-term on-the-job training
47-2111	Electricians	684	715	31	5	0.95	17.07	Long-term on-the-job training
47-2121	Glaziers	32	33	1	3	0.56	13.44	Long-term on-the-job training
47-2131	Insulation workers, floor, ceiling, and wall	18	20	2	11	0.56	12.99	Moderate-term on-the-job training
47-2132	Insulation workers, mechanical	17	19	2	12	0.60	13.99	Moderate-term on-the-job training
47-2141	Painters, construction and maintenance	462	554	92	20	0.84	14.48	Moderate-term on-the-job training

SOC Code	Description	2007 Jobs	2016 Jobs	Change	% Change	2007 National LQ	2007 Median Hourly Earnings (\$)	Typical Education & Training Level
47-2142	Paperhangers	15	18	3	20	0.88	16.23	Moderate-term on-the-job training
47-2151	Pipelayers	131	163	32	24	1.18	14.57	Moderate-term on-the-job training
47-2152	Plumbers, pipefitters, and steamfitters	318	396	78	25	0.66	18.53	Long-term on-the-job training
47-2161	Plasterers and stucco masons	26	29	3	12	0.44	15.39	Long-term on-the-job training
47-2171	Reinforcing iron and rebar workers	12	12	0	0	0.39	14.56	Long-term on-the-job training
47-2181	Roofers	137	147	10	7	0.75	13.51	Moderate-term on-the-job training
47-2211	Sheet metal workers	312	381	69	22	1.66	12.80	Long-term on-the-job training
47-2221	Structural iron and steel workers	31	32	1	3	0.43	18.07	Long-term on-the-job training
47-3011	Helpers, brickmasons, blockmasons, stonemasons, and tile and marble setters	50	40	-10	-20	0.79	9.43	Short-term on-the-job training
47-3012	Helpers, carpenters	163	152	-11	-7	1.57	10.61	Short-term on-the-job training
47-3013	Helpers, electricians	99	90	-9	-9	0.97	10.57	Short-term on-the-job training
47-3014	Helpers, painters, paperhangers, plasterers, and stucco masons	22	21	-1	-5	0.91	10.66	Short-term on-the-job training
47-3015	Helpers, pipelayers, plumbers, pipefitters, and steamfitters	80	98	18	23	0.98	13.51	Short-term on-the-job training
47-3016	Helpers, roofers	16	14	-2	-13	0.76	10.84	Short-term on-the-job training
47-3019	Helpers, construction trades, all other	17	19	2	12	0.47	8.32	Short-term on-the-job training
47-4011	Construction and building inspectors	82	99	17	21	0.66	16.33	Work experience in a related field
47-4021	Elevator installers and repairers	13	16	3	23	0.59	15.47	Long-term on-the-job training

SOC Code	Description	2007 Jobs	2016 Jobs	Change	% Change	2007 National LQ	2007 Median Hourly Earnings (\$)	Typical Education & Training Level
47-4031	Fence erectors	21	27	6	29	0.63	13.85	Moderate-term on-the-job training
47-4041	Hazardous materials removal workers	35	37	2	6	0.92	14.72	Moderate-term on-the-job training
47-4051	Highway maintenance workers	15	18	3	20	0.11	14.85	Moderate-term on-the-job training
47-4071	Septic tank servicers and sewer pipe cleaners	27	31	4	15	1.07	12.27	Moderate-term on-the-job training
47-4099	Construction and related workers, all other	11	13	2	18	0.18	16.66	Moderate-term on-the-job training
47-5021	Earth drillers, except oil and gas	11	13	2	18	0.43	15.36	Moderate-term on-the-job training
49-1011	First-line supervisors/managers of mechanics, installers, and repairers	567	637	70	12	1.26	21.88	Work experience in a related field
49-2011	Computer, automated teller, and office machine repairers	137	161	24	18	0.76	10.58	Postsecondary vocational award
49-2021	Radio mechanics	10	13	3	30	0.97	14.15	Postsecondary vocational award
49-2022	Telecommunications equipment installers and repairers, except line installers	291	300	9	3	1.41	16.03	Long-term on-the-job training
49-2092	Electric motor, power tool, and related repairers	32	32	0	0	1.38	13.38	Postsecondary vocational award
49-2093	Electrical and electronics installers and repairers, transportation equipment	21	22	1	5	1.11	23.50	Postsecondary vocational award
49-2094	Electrical and electronics repairers, commercial and industrial equipment	46	51	5	11	0.61	24.33	Postsecondary vocational award
49-2095	Electrical and electronics repairers, powerhouse, substation, and relay	31	35	4	13	1.43	49.98	Postsecondary vocational award
49-2096	Electronic equipment installers and repairers, motor vehicles	25	27	2	8	1.28	13.04	Postsecondary vocational award

SOC Code	Description	2007 Jobs	2016 Jobs	Change	% Change	2007 National LQ	2007 Median Hourly Earnings (\$)	Typical Education & Training Level
49-2097	Electronic home entertainment equipment installers and repairers	38	49	11	29	0.68	13.10	Postsecondary vocational award
49-2098	Security and fire alarm systems installers	37	40	3	8	0.60	13.16	Postsecondary vocational award
49-3011	Aircraft mechanics and service technicians	75	88	13	17	0.62	19.09	Postsecondary vocational award
49-3021	Automotive body and related repairers	409	434	25	6	2.20	13.78	Long-term on-the-job training
49-3022	Automotive glass installers and repairers	25	27	2	8	1.16	12.76	Long-term on-the-job training
49-3023	Automotive service technicians and mechanics	788	954	166	21	0.98	12.96	Postsecondary vocational award
49-3031	Bus and truck mechanics and diesel engine specialists	347	407	60	17	1.29	14.29	Postsecondary vocational award
49-3041	Farm equipment mechanics	33	37	4	12	0.97	12.83	Postsecondary vocational award
49-3042	Mobile heavy equipment mechanics, except engines	96	116	20	21	0.80	18.90	Postsecondary vocational award
49-3043	Rail car repairers	10	13	3	30	--	--	Long-term on-the-job training
49-3051	Motorboat mechanics	46	55	9	20	1.56	11.78	Long-term on-the-job training
49-3052	Motorcycle mechanics	27	34	7	26	1.00	11.47	Long-term on-the-job training
49-3053	Outdoor power equipment and other small engine mechanics	32	35	3	9	0.90	12.23	Moderate-term on-the-job training
49-3092	Recreational vehicle service technicians	12	14	2	17	0.85	16.34	Long-term on-the-job training
49-3093	Tire repairers and changers	59	65	6	10	0.59	11.13	Short-term on-the-job training
49-9011	Mechanical door repairers	11	11	0	0	0.75	17.89	Moderate-term on-the-job training
49-9012	Control and valve installers and repairers, except mechanical door	74	89	15	20	1.80	29.75	Moderate-term on-the-job training

SOC Code	Description	2007 Jobs	2016 Jobs	Change	% Change	2007 National LQ	2007 Median Hourly Earnings (\$)	Typical Education & Training Level
49-9021	Heating, air conditioning, and refrigeration mechanics and installers	293	362	69	24	0.92	17.19	Long-term on-the-job training
49-9031	Home appliance repairers	86	102	16	19	1.06	7.79	Long-term on-the-job training
49-9041	Industrial machinery mechanics	585	769	184	31	2.33	18.04	Long-term on-the-job training
49-9042	Maintenance and repair workers, general	2,323	2,697	374	16	1.71	14.56	Moderate-term on-the-job training
49-9043	Maintenance workers, machinery	184	213	29	16	2.34	16.80	Short-term on-the-job training
49-9044	Millwrights	82	93	11	13	1.58	19.56	Long-term on-the-job training
49-9051	Electrical power-line installers and repairers	95	119	24	25	0.85	42.20	Long-term on-the-job training
49-9052	Telecommunications line installers and repairers	122	122	0	0	0.71	18.69	Long-term on-the-job training
49-9061	Camera and photographic equipment repairers	11	13	2	18	0.93	7.72	Moderate-term on-the-job training
49-9062	Medical equipment repairers	24	31	7	29	0.62	12.86	Associate's degree
49-9063	Musical instrument repairers and tuners	12	14	2	17	0.87	7.51	Long-term on-the-job training
49-9064	Watch repairers	11	13	2	18	0.98	7.46	Long-term on-the-job training
49-9069	Precision instrument and equipment repairers, all other	20	25	5	25	0.98	16.54	Moderate-term on-the-job training
49-9091	Coin, vending, and amusement machine servicers and repairers	53	59	6	11	0.82	14.70	Moderate-term on-the-job training
49-9092	Commercial divers	24	32	8	33	0.97	8.51	Moderate-term on-the-job training
49-9093	Fabric menders, except garment	25	33	8	32	1.06	8.73	Moderate-term on-the-job training

SOC Code	Description	2007 Jobs	2016 Jobs	Change	% Change	2007 National LQ	2007 Median Hourly Earnings (\$)	Typical Education & Training Level
49-9094	Locksmiths and safe repairers	37	51	14	38	0.97	11.46	Moderate-term on-the-job training
49-9095	Manufactured building and mobile home installers	14	17	3	21	1.07	14.05	Moderate-term on-the-job training
49-9097	Signal and track switch repairers	27	35	8	30	0.97	11.64	Moderate-term on-the-job training
49-9098	Helpers--Installation, maintenance, and repair workers	326	375	49	15	2.09	11.52	Short-term on-the-job training
49-9099	Installation, maintenance, and repair workers, all other	65	80	15	23	0.44	15.16	Moderate-term on-the-job training
51-1011	First-line supervisors/managers of production and operating workers	1,373	1,625	252	18	2.02	25.13	Work experience in a related field
51-2011	Aircraft structure, surfaces, rigging, and systems assemblers	10	15	5	50	--	--	Long-term on-the-job training
51-2021	Coil winders, tapers, and finishers	30	23	-7	-23	1.39	16.97	Short-term on-the-job training
51-2022	Electrical and electronic equipment assemblers	89	84	-5	-6	0.43	14.69	Short-term on-the-job training
51-2023	Electromechanical equipment assemblers	34	38	4	12	0.59	12.20	Short-term on-the-job training
51-2031	Engine and other machine assemblers	157	218	61	39	3.68	13.13	Short-term on-the-job training
51-2041	Structural metal fabricators and fitters	147	192	45	31	1.51	19.89	Moderate-term on-the-job training
51-2091	Fiberglass laminators and fabricators	121	186	65	54	3.11	23.74	Moderate-term on-the-job training
51-2092	Team assemblers	2,954	3,676	722	24	2.45	12.58	Moderate-term on-the-job training
51-2099	Assemblers and fabricators, all other	231	277	46	20	0.82	14.20	Moderate-term on-the-job training

SOC Code	Description	2007 Jobs	2016 Jobs	Change	% Change	2007 National LQ	2007 Median Hourly Earnings (\$)	Typical Education & Training Level
51-3011	Bakers	41	44	3	7	0.29	9.98	Long-term on-the-job training
51-3021	Butchers and meat cutters	141	139	-2	-1	1.13	16.46	Long-term on-the-job training
51-3022	Meat, poultry, and fish cutters and trimmers	100	110	10	10	0.73	16.45	Short-term on-the-job training
51-3023	Slaughterers and meat packers	183	194	11	6	1.58	12.26	Moderate-term on-the-job training
51-3092	Food batchmakers	81	97	16	20	0.90	11.47	Short-term on-the-job training
51-3093	Food cooking machine operators and tenders	40	39	-1	-3	0.94	12.21	Short-term on-the-job training
51-4011	Computer-controlled machine tool operators, metal and plastic	124	176	52	42	0.92	15.62	Moderate-term on-the-job training
51-4012	Numerical tool and process control programmers	23	28	5	22	1.31	18.19	Long-term on-the-job training
51-4021	Extruding and drawing machine setters, operators, and tenders, metal and plastic	130	141	11	8	1.44	16.56	Moderate-term on-the-job training
51-4022	Forging machine setters, operators, and tenders, metal and plastic	51	52	1	2	1.71	15.34	Moderate-term on-the-job training
51-4023	Rolling machine setters, operators, and tenders, metal and plastic	74	84	10	14	2.22	15.57	Moderate-term on-the-job training
51-4031	Cutting, punching, and press machine setters, operators, and tenders, metal and plastic	483	545	62	13	1.86	12.40	Moderate-term on-the-job training
51-4032	Drilling and boring machine tool setters, operators, and tenders, metal and plastic	79	88	9	11	1.96	15.79	Moderate-term on-the-job training
51-4033	Grinding, lapping, polishing, and buffing machine tool setters, operators, and tenders, metal and plastic	198	249	51	26	2.06	12.82	Moderate-term on-the-job training
51-4034	Lathe and turning machine tool setters, operators, and tenders, metal and plastic	88	96	8	9	1.38	14.59	Moderate-term on-the-job training

SOC Code	Description	2007 Jobs	2016 Jobs	Change	% Change	2007 National LQ	2007 Median Hourly Earnings (\$)	Typical Education & Training Level
51-4035	Milling and planing machine setters, operators, and tenders, metal and plastic	52	56	4	8	1.82	16.94	Moderate-term on-the-job training
51-4041	Machinists	771	1,000	229	30	2.08	16.53	Long-term on-the-job training
51-4051	Metal-refining furnace operators and tenders	23	27	4	17	1.29	16.11	Moderate-term on-the-job training
51-4052	Pourers and casters, metal	12	12	0	0	0.81	17.67	Moderate-term on-the-job training
51-4071	Foundry mold and coremakers	20	29	9	45	1.48	14.42	Moderate-term on-the-job training
51-4072	Molding, coremaking, and casting machine setters, operators, and tenders, metal and plastic	478	542	64	13	3.19	10.96	Moderate-term on-the-job training
51-4081	Multiple machine tool setters, operators, and tenders, metal and plastic	128	169	41	32	1.39	14.68	Moderate-term on-the-job training
51-4111	Tool and die makers	148	182	34	23	1.57	20.54	Long-term on-the-job training
51-4121	Welders, cutters, solderers, and brazers	934	1,289	355	38	2.41	14.26	Long-term on-the-job training
51-4122	Welding, soldering, and brazing machine setters, operators, and tenders	104	140	36	35	1.52	22.67	Moderate-term on-the-job training
51-4191	Heat treating equipment setters, operators, and tenders, metal and plastic	95	113	18	19	3.64	13.97	Moderate-term on-the-job training
51-4193	Plating and coating machine setters, operators, and tenders, metal and plastic	44	51	7	16	1.11	13.22	Moderate-term on-the-job training
51-4194	Tool grinders, filers, and sharpeners	21	20	-1	-5	1.20	12.60	Moderate-term on-the-job training
51-4199	Metal workers and plastic workers, all other	28	28	0	0	0.60	15.80	Moderate-term on-the-job training

SOC Code	Description	2007 Jobs	2016 Jobs	Change	% Change	2007 National LQ	2007 Median Hourly Earnings (\$)	Typical Education & Training Level
51-5011	Bindery workers	21	25	4	19	0.33	10.05	Short-term on-the-job training
51-5021	Job printers	51	66	15	29	1.04	15.14	Long-term on-the-job training
51-5022	Prepress technicians and workers	31	36	5	16	0.44	14.05	Postsecondary vocational award
51-5023	Printing machine operators	229	278	49	21	1.17	12.51	Moderate-term on-the-job training
51-6011	Laundry and dry-cleaning workers	309	318	9	3	1.19	7.24	Moderate-term on-the-job training
51-6021	Pressers, textile, garment, and related materials	238	240	2	1	3.18	8.02	Short-term on-the-job training
51-6031	Sewing machine operators	438	576	138	32	1.85	13.70	Moderate-term on-the-job training
51-6041	Shoe and leather workers and repairers	22	29	7	32	1.00	7.09	Long-term on-the-job training
51-6051	Sewers, hand	77	97	20	26	1.12	8.54	Short-term on-the-job training
51-6052	Tailors, dressmakers, and custom sewers	78	100	22	28	0.88	8.44	Long-term on-the-job training
51-6061	Textile bleaching and dyeing machine operators and tenders	159	160	1	1	8.17	11.87	Moderate-term on-the-job training
51-6062	Textile cutting machine setters, operators, and tenders	73	95	22	30	3.85	10.70	Moderate-term on-the-job training
51-6063	Textile knitting and weaving machine setters, operators, and tenders	378	483	105	28	9.71	13.25	Long-term on-the-job training
51-6064	Textile winding, twisting, and drawing out machine setters, operators, and tenders	1,207	1,562	355	29	27.87	10.11	Moderate-term on-the-job training
51-6091	Extruding and forming machine setters, operators, and tenders, synthetic and glass fibers	70	61	-9	-13	4.15	14.66	Moderate-term on-the-job training

SOC Code	Description	2007 Jobs	2016 Jobs	Change	% Change	2007 National LQ	2007 Median Hourly Earnings (\$)	Typical Education & Training Level
51-6092	Fabric and apparel patternmakers	16	20	4	25	1.73	12.12	Long-term on-the-job training
51-6093	Upholsterers	72	92	20	28	0.76	7.29	Long-term on-the-job training
51-6099	Textile, apparel, and furnishings workers, all other	39	42	3	8	1.75	12.03	Short-term on-the-job training
51-7011	Cabinetmakers and bench carpenters	96	110	14	15	0.68	12.74	Long-term on-the-job training
51-7021	Furniture finishers	24	30	6	25	0.55	7.43	Long-term on-the-job training
51-7041	Sawing machine setters, operators, and tenders, wood	153	169	16	10	2.39	17.56	Moderate-term on-the-job training
51-7042	Woodworking machine setters, operators, and tenders, except sawing	251	317	66	26	2.60	9.57	Moderate-term on-the-job training
51-8013	Power plant operators	106	137	31	29	3.14	33.16	Long-term on-the-job training
51-8021	Stationary engineers and boiler operators	44	50	6	14	1.04	20.89	Long-term on-the-job training
51-8031	Water and liquid waste treatment plant and system operators	243	291	48	20	2.37	15.63	Long-term on-the-job training
51-8091	Chemical plant and system operators	192	168	-24	-13	3.72	22.01	Long-term on-the-job training
51-8092	Gas plant operators	16	21	5	31	1.36	26.82	Long-term on-the-job training
51-9011	Chemical equipment operators and tenders	430	389	-41	-10	8.74	22.05	Moderate-term on-the-job training
51-9012	Separating, filtering, clarifying, precipitating, and still machine setters, operators, and tenders	133	142	9	7	3.18	17.88	Moderate-term on-the-job training
51-9021	Crushing, grinding, and polishing machine setters, operators, and tenders	35	38	3	9	0.87	14.43	Moderate-term on-the-job training
51-9022	Grinding and polishing workers, hand	73	97	24	33	1.71	10.91	Moderate-term on-the-job training

SOC Code	Description	2007 Jobs	2016 Jobs	Change	% Change	2007 National LQ	2007 Median Hourly Earnings (\$)	Typical Education & Training Level
51-9023	Mixing and blending machine setters, operators, and tenders	199	224	25	13	1.48	16.32	Moderate-term on-the-job training
51-9031	Cutters and trimmers, hand	54	81	27	50	1.90	9.41	Short-term on-the-job training
51-9032	Cutting and slicing machine setters, operators, and tenders	107	124	17	16	1.42	11.33	Moderate-term on-the-job training
51-9041	Extruding, forming, pressing, and compacting machine setters, operators, and tenders	124	134	10	8	1.56	13.32	Moderate-term on-the-job training
51-9051	Furnace, kiln, oven, drier, and kettle operators and tenders	43	51	8	19	1.66	12.71	Moderate-term on-the-job training
51-9061	Inspectors, testers, sorters, samplers, and weighers	1,233	1,412	179	15	2.60	12.49	Moderate-term on-the-job training
51-9071	Jewelers and precious stone and metal workers	33	42	9	27	0.64	14.75	Postsecondary vocational award
51-9081	Dental laboratory technicians	70	73	3	4	1.52	12.79	Long-term on-the-job training
51-9082	Medical appliance technicians	10	15	5	50	0.90	12.20	Long-term on-the-job training
51-9083	Ophthalmic laboratory technicians	13	13	0	0	0.44	14.88	Moderate-term on-the-job training
51-9111	Packaging and filling machine operators and tenders	519	561	42	8	1.40	10.10	Short-term on-the-job training
51-9121	Coating, painting, and spraying machine setters, operators, and tenders	327	372	45	14	3.19	12.45	Moderate-term on-the-job training
51-9122	Painters, transportation equipment	62	77	15	24	1.14	13.60	Long-term on-the-job training
51-9123	Painting, coating, and decorating workers	25	34	9	36	0.76	10.22	Short-term on-the-job training
51-9131	Photographic process workers	17	12	-5	-29	0.58	12.13	Moderate-term on-the-job training

SOC Code	Description	2007 Jobs	2016 Jobs	Change	% Change	2007 National LQ	2007 Median Hourly Earnings (\$)	Typical Education & Training Level
51-9132	Photographic processing machine operators	48	30	-18	-38	0.89	8.98	Short-term on-the-job training
51-9141	Semiconductor processors	16	25	9	56	0.38	39.35	Associate's degree
51-9191	Cementing and gluing machine operators and tenders	22	27	5	23	0.97	11.71	Moderate-term on-the-job training
51-9192	Cleaning, washing, and metal pickling equipment operators and tenders	18	18	0	0	1.12	10.44	Moderate-term on-the-job training
51-9193	Cooling and freezing equipment operators and tenders	11	13	2	18	0.81	52.68	Moderate-term on-the-job training
51-9195	Molders, shapers, and casters, except metal and plastic	29	47	18	62	0.64	23.70	Moderate-term on-the-job training
51-9196	Paper goods machine setters, operators, and tenders	570	686	116	20	5.22	16.17	Moderate-term on-the-job training
51-9197	Tire builders	114	101	-13	-11	5.27	13.42	Moderate-term on-the-job training
51-9198	Helpers--Production workers	1,538	1,818	280	18	2.96	8.72	Short-term on-the-job training
51-9199	Production workers, all other	350	412	62	18	1.24	13.26	Moderate-term on-the-job training
53-1011	Aircraft cargo handling supervisors	14	20	6	43	1.25	26.55	Work experience in a related field
53-1021	First-line supervisors/managers of helpers, laborers, and material movers, hand	258	319	61	24	1.45	20.45	Work experience in a related field
53-1031	First-line supervisors/managers of transportation and material-moving machine and vehicle operators	244	286	42	17	1.12	22.85	Work experience in a related field
53-2012	Commercial pilots	44	50	6	14	1.22	20.23	Postsecondary vocational award
53-2021	Air traffic controllers	15	17	2	13	0.70	36.44	Long-term on-the-job training

SOC Code	Description	2007 Jobs	2016 Jobs	Change	% Change	2007 National LQ	2007 Median Hourly Earnings (\$)	Typical Education & Training Level
53-3011	Ambulance drivers and attendants, except emergency medical technicians	92	103	11	12	4.53	8.49	Moderate-term on-the-job training
53-3021	Bus drivers, transit and intercity	146	176	30	21	0.73	8.70	Moderate-term on-the-job training
53-3022	Bus drivers, school	497	562	65	13	1.07	8.27	Short-term on-the-job training
53-3031	Driver/sales workers	872	1,030	158	18	1.44	14.05	Short-term on-the-job training
53-3032	Truck drivers, heavy and tractor-trailer	2,210	2,594	384	17	1.20	15.62	Moderate-term on-the-job training
53-3033	Truck drivers, light or delivery services	1,589	1,927	338	21	1.40	11.11	Short-term on-the-job training
53-3041	Taxi drivers and chauffeurs	172	210	38	22	0.57	7.02	Short-term on-the-job training
53-3099	Motor vehicle operators, all other	22	24	2	9	0.31	21.97	Short-term on-the-job training
53-4019	Locomotive engineers and operators	32	40	8	25	0.85	23.92	Moderate-term on-the-job training
53-4021	Railroad brake, signal, and switch operators	13	14	1	8	0.68	21.31	Moderate-term on-the-job training
53-4031	Railroad conductors and yardmasters	21	28	7	33	0.72	24.60	Moderate-term on-the-job training
53-6021	Parking lot attendants	49	49	0	0	0.37	8.45	Short-term on-the-job training
53-6031	Service station attendants	41	47	6	15	0.45	17.34	Short-term on-the-job training
53-6051	Transportation inspectors	10	12	2	20	--	--	Work experience in a related field
53-6099	Transportation workers, all other	18	19	1	6	0.46	9.76	Short-term on-the-job training
53-7011	Conveyor operators and tenders	101	116	15	15	2.19	11.41	Short-term on-the-job training

SOC Code	Description	2007 Jobs	2016 Jobs	Change	% Change	2007 National LQ	2007 Median Hourly Earnings (\$)	Typical Education & Training Level
53-7021	Crane and tower operators	47	55	8	17	1.04	19.42	Long-term on-the-job training
53-7031	Dredge operators	11	13	2	18	1.16	15.54	Moderate-term on-the-job training
53-7032	Excavating and loading machine and dragline operators	97	118	21	22	1.34	15.72	Moderate-term on-the-job training
53-7033	Loading machine operators, underground mining	10	13	3	30	1.01	16.25	Moderate-term on-the-job training
53-7051	Industrial truck and tractor operators	994	1,109	115	12	1.62	12.68	Short-term on-the-job training
53-7061	Cleaners of vehicles and equipment	387	435	48	12	1.12	8.62	Short-term on-the-job training
53-7062	Laborers and freight, stock, and material movers, hand	4,025	4,472	447	11	1.72	10.23	Short-term on-the-job training
53-7063	Machine feeders and offbearers	271	284	13	5	1.90	10.42	Short-term on-the-job training
53-7064	Packers and packagers, hand	867	862	-5	-1	1.07	7.83	Short-term on-the-job training
53-7072	Pump operators, except wellhead pumpers	10	14	4	40	0.32	9.34	Moderate-term on-the-job training
53-7081	Refuse and recyclable material collectors	240	274	34	14	1.70	9.48	Short-term on-the-job training
53-7121	Tank car, truck, and ship loaders	13	15	2	15	0.89	15.46	Moderate-term on-the-job training
53-7199	Material moving workers, all other	22	25	3	14	0.47	13.84	Moderate-term on-the-job training
		165,965	192,599	26,634	16		15.06	

at least 1.25 greater than \$15.06

Source: EMSI



South Carolina
Department of Commerce
1201 Main Street, Suite 1600
Columbia, SC 29201

(800) 868-7232
(803) 737-0400
www.sccommerce.com