

D4925
2.W15-2
1985
Copy 1

WALTERBORO

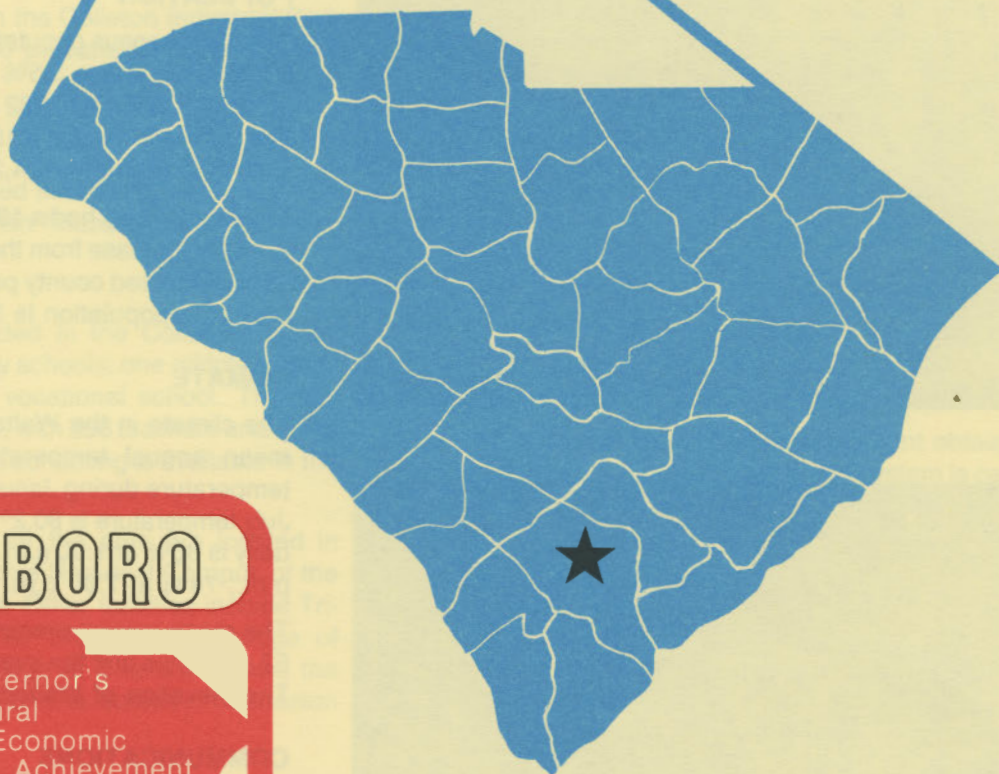
south carolina

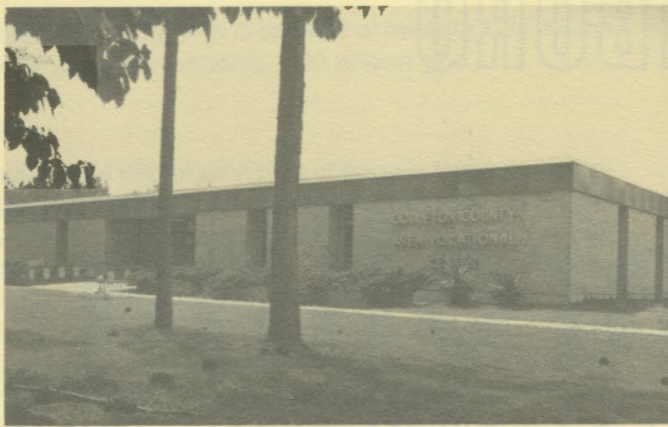


S. C. STATE LIBRARY

NOV 19 1985

STATE DOCUMENTS

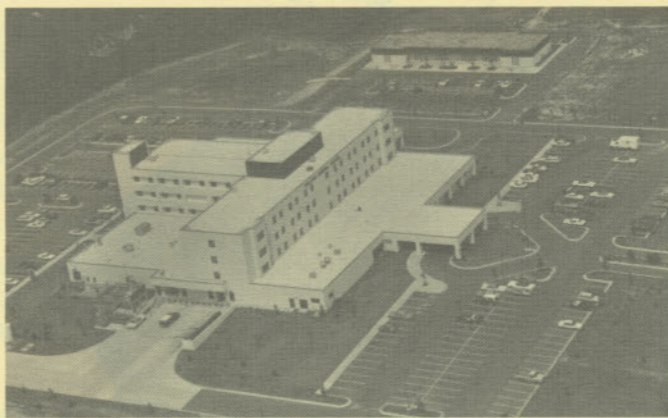




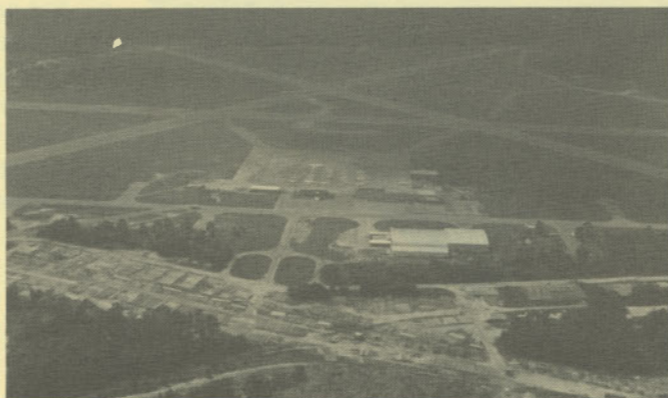
Colleton County Area Vocational Center



Colleton County Court House



Colleton Regional Hospital



Walterboro Municipal Airport

LOCATION

As depicted on the cover, Walterboro, seat of Colleton County, is in the southeastern section of the state. Charleston, South Carolina's busiest port, is 48 miles east. Columbia is 88 miles north and Greenville is 189 miles northwest. Walterboro is 253 miles east of Atlanta; 750 miles south of New York; and 2,776 miles east of San Francisco.



POPULATION

The 1980 census population of the city of Walterboro was 6,036. This was a 3.5% decrease from the 1970 population of 6,257. The 1982 estimated population was 6,380. The population within a 15-mile radius is 31,783 and within a 30-mile radius is 124,217.

Colleton County had a 1980 census population of 31,676, a 14.7% increase from the 1970 population of 27,622. The 1985 estimated county population is 33,900 and the 1990 projected population is 36,700.

CLIMATE

The climate in the Walterboro area is temperate with a mean annual temperature of 64.7° F. The average temperature during January is 48.6° F, while the average July temperature is 80.2° F. The average relative humidity daily is 86% at 1:00 a.m.; 86% at 7:00 a.m.; 56% at 1:00 p.m.; 74% at 7:00 p.m.

The mean annual precipitation in the Walterboro area is 52.12 inches and the average growing season is 238 days. The elevation of Walterboro is 90 feet above sea level.

COMMUNICATIONS

The *Press and Standard* is published once a week in Walterboro, and five large dailies circulate in the county. WALD radio station has AM and FM broadcast facilities in the city. Four television stations representing the three major networks and ETV can be received in the city. Telephone service in the area is provided by the General

Telephone Company of the Southeast and Palmetto Rural Telephone Cooperative, Inc.

GOVERNMENT

The community has a council-manager form of municipal government. The six city council members and the mayor are elected for four-year terms. Colleton County is governed locally by a five-member county council and a county supervisor. Council members are elected for four-year terms.

POLICE AND FIRE

The Walterboro Police Department has 20 full-time police officers. The department operates five radio equipped patrol cars. The Walterboro Fire Department has seven full-time and 20 volunteer firemen who operate five trucks. Walterboro's insurance rating is Class 5.

FINANCIAL INSTITUTIONS

Walterboro has four banks and three savings and loan associations to serve the financial needs of the community. The banks have total assets of \$4.3 billion, while the savings and loans have assets of \$2.1 billion.

HOTELS AND MOTELS

Thirteen motels located in the Walterboro area provide over 861 overnight accommodations. The community has several meeting facilities and banquet facilities for up to 250 persons. The Walterboro-Colleton County Recreation Commission has a facility in the Colleton Industrial Park which accommodates 1,100 persons for meetings and banquets.

CHURCHES

Over 25 churches are located in the county, including a Catholic church and a Jewish house of worship.

EDUCATION

Walterboro, which is included in the Colleton County Schools, has four elementary schools; one middle school; one high school; and one vocational school. The student/teacher ratio is 19.5 to 1, with 236 teachers and 4,612 students. In addition, private schooling is available in the area.

Higher education facilities for the area are located in Walterboro at the Salkehatchie Regional Campus of the University of South Carolina. Other facilities include Trident Technical College, The Citadel, the College of Charleston, the Baptist College at Charleston, and the Medical University of South Carolina located in Charleston 48 miles away.

MEDICAL SERVICES

The Colleton Regional Hospital, owned by the Hospital Corporation of America, is a 145-bed general hospital located in Walterboro. The city has 18 privately-practicing medical doctors and 12 privately-practicing dentists. Specialized medical treatment facilities are located in Charleston, 48 miles from the community.

RECREATION AND CIVIC FACILITIES

The city has three parks with outdoor cooking and picnic facilities, several mini-parks, and tennis courts. For golfers, the Dogwood Hills Country Club offers a challenging 9-hole course. Boat launches are located on the Ashepoo, Combahee and Edisto Rivers, which are navigable by small craft to the nearby Atlantic Ocean. Several privately-owned fish ponds and game preserves afford areas for hunting and fishing. Outdoor recreation groups include a saddle club, boat club, and several hunting clubs. Edisto Beach, also in Colleton County, offers a wide range of recreational facilities. Additional recreational activities for all ages are available through the Walterboro-Colleton County Recreation Commission.

POWER

Electric power is available to the community and surrounding areas from South Carolina Electric & Gas Company and Coastal Electric Cooperative. During 1985, SCE&G projects a system reserve of 38.2% with an existing generating capacity of 3,959 megawatts. SCE&G is committed to having sufficient reserves to meet the immediate and future energy requirements of its service area. Being a major exporter of electric power, SCE&G maintains inter-tie connections with five neighboring utilities.

Electric power for Coastal Electric Cooperative is supplied by Central Electric Power Cooperative and South Carolina Public Service Authority. The generation capacity of plants in operation or under construction totals over 3,200 megawatts with approximately 73% produced from coal. Interconnections are maintained with all neighboring power suppliers. Sufficient reserves are available to meet immediate and future industrial power requirements. Economic Development Incentive Rates are available for qualifying industries.

FUELS

Natural gas is supplied by South Carolina Electric & Gas Company.

WATER

The City of Walterboro Utilities Department obtains the municipal water supply from wells. The system is capable of supplying water at a maximum rate of 3.46 million gpd. The average daily demand on the system is 1.30 million gallons. Treated water storage consists of 1.4 million gallons in elevated storage and 300,000 gallons in ground storage.

Analysis of water supplied in the community:

Total solids	N/A
Alkalinity	210 mg/L
Calcium	3 mg/L
Hardness	12 mg/L
Iron	.1 mg/L
pH	8.7

SEWER

Walterboro uses extended aeration to treat its municipal

wastewater. The system is capable of treating 1.85 million gpd and currently handles 1.20 million gpd.

LABOR

Because labor information may change in this area, a current labor availability report prepared and kept up to date by the S. C. State Development Board will be furnished to prospective manufacturers at their request. The comprehensive report will include sources of recruitable labor, labor force characteristics, work force skill levels, earnings data and other pertinent information. The S. C. State Board for Technical and Comprehensive Education has the resources to recruit and train workers in accordance with a company's entry criteria. This training is at little or no cost to the employer. A lead-time schedule is developed to coordinate recruiting, testing, selecting, and training. This assures that persons will be able to move from training to their respective jobs at the time the plant is ready for initial production.

TRANSPORTATION

Walterboro is served by one interstate highway, I-95 (2 miles), two United States highways and three South Carolina highways. The community is served by the Seaboard System Railroad. Walterboro is served by 38 authorized motor carriers, one of which has terminal facilities in the area.

Freight Delivery Times:

To:	By Rail:	By Truck:
Atlanta	2 days	1 day
Baltimore	3 days	3 days
Chicago	4 days	3 days
Houston	6 days	3 days
New York	4 days	4 days
St. Louis	4 days	4 days
San Francisco	6 days	5 days

Charleston International Airport, 45 miles away, offers regularly scheduled commercial airline service on American, Bankair, Delta, Eastern, Piedmont and United.

MAJOR EMPLOYERS

Name	Product or Service	Employees
Asten-Hill Co.	Felts and fabrics	259
Besteel — Div. of LPL Industries	Prefab buildings	68
Coastal Lumber Co.	Lumber	100
Dayco Corp.	Automotive belts	433
J. P. Stevens & Co., Inc.	Weaving of fiberglass fabrics	339
Vestra Industries, Inc.	Blouses, dresses and pants	272
Wheelabrator-Frye, Inc.	White iron castings	50

Private aircraft utilize the Walterboro Municipal Airport which has paved runways of 5,700 and 5,500 feet and a paved and lighted 5,150-foot runway. Services available at the airport are RBN, major airframe and major powerplant repairs, 100LL and Jet A fuel, Unicom and Vortac.

FOREIGN TRADE ZONE

A Foreign Trade Zone is located in Summerville, South Carolina, 25 miles from the Port of Charleston and 23 miles from the community. The Foreign Trade Zone allows manufacturers to store, manufacture, or process goods without paying U.S. Customs duties or worrying about quota compliance. This Foreign Trade Zone is served by a multimode transportation network which provides excellent accessibility to market areas.

TAXES

The assessment on industrial property in South Carolina is 10.5% of the market value. New industry is granted a five-year moratorium on general county taxes (with the exception of school taxes). The city tax rate is \$7.00 per \$100 of assessed value. The county rate is \$11.30 per \$100 of assessed value. The effective city tax rate (tax liability per \$100 of market value) is \$.74. The effective county rate is \$1.19. The state has no tax on a manufacturer's inventories, goods-in-process, raw materials or finished goods. Treatment facilities or equipment of manufacturing plants which control water or air pollution are exempt from all property taxation.

INDUSTRIAL SITES

Industrial sites are available in Walterboro with a wide range of geographic and topographic features. In all probability, a site that will meet the needs of most industries' requirements has been identified, catalogued, and entered into the State Development Board's Computerized Site Selection System. Detailed site information is available and will be furnished upon request.

For Additional Information Contact:

SOUTH CAROLINA STATE DEVELOPMENT BOARD
 P. O. Box 927, Columbia, South Carolina 29202
 (803) 758-3145