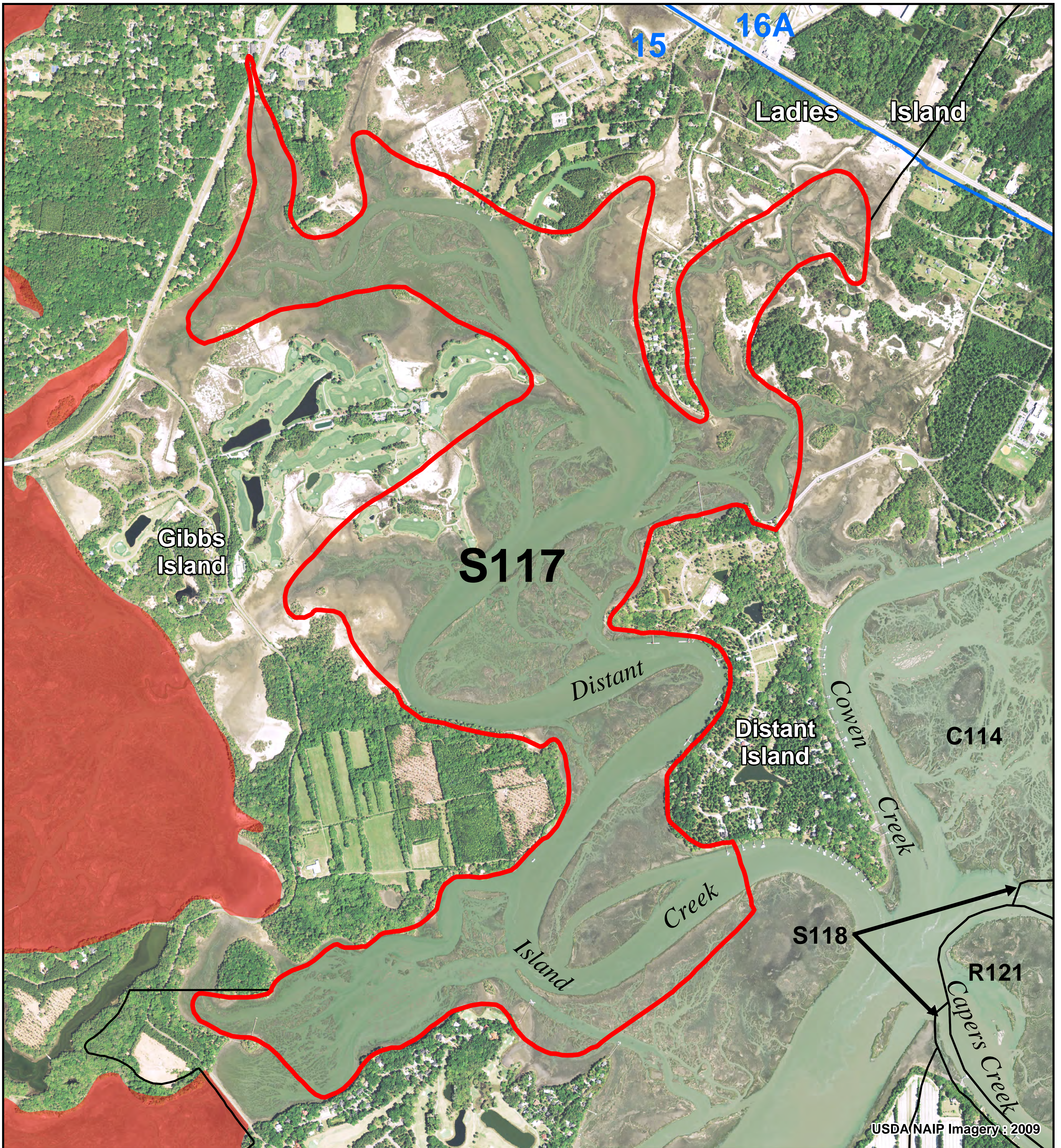


Distant Island Creek S117

S117 is within SCDHEC Shellfish Management Area 15. These areas are subject to closure at any time. Please call (800) 285-1618.

SHELLFISH SEASON
2014 - 2015



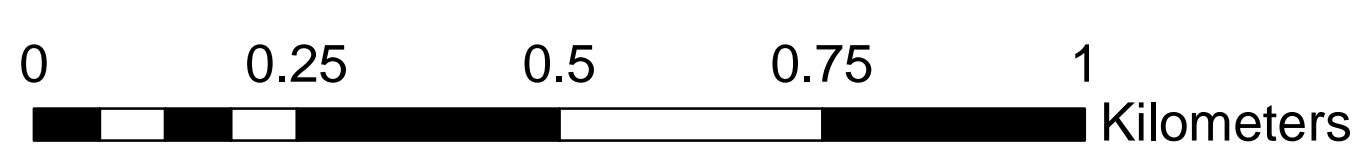
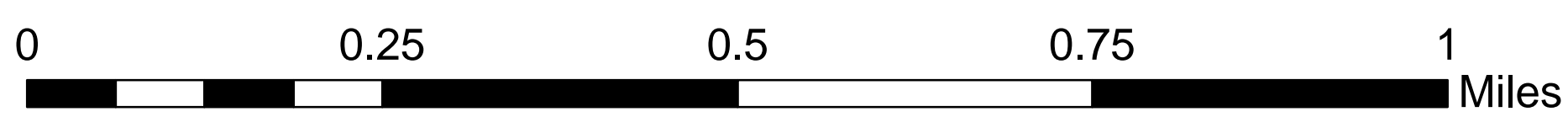
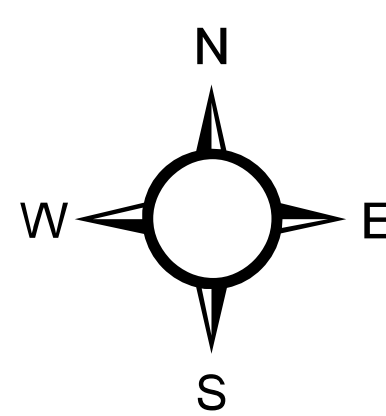
Legend

SHELLFISH HARVEST BOUNDARIES

- AREA OF INTEREST
- NEIGHBORING AREAS
C000 = COMMERCIAL CULTURE PERMIT
R000 = RECREATIONAL SHELLFISH GROUND
S000 = STATE SHELLFISH GROUND
- SHELLFISH MANAGEMENT AREAS (SCDHEC)

2014-15 SCDHEC SHELLFISH HARVEST CLASSIFICATIONS

- PROHIBITED
- RESTRICTED
- CONDITIONALLY APPROVED



Location: Distant Island Creek
County: Beaufort



PRODUCED BY:
SOUTH CAROLINA DEPARTMENT OF NATURAL RESOURCES
OFFICE OF FISHERIES MANAGEMENT
SHELLFISH MANAGEMENT SECTION
09/2014