

South Carolina



THE PALMETTO STATE

D4925
2.5587
Copy 1



The Carolina Wren

THE STATE BIRD OF SOUTH CAROLINA

Prior to 1939 "The Carolina Wren" had been unofficially recognized as the State Bird of South Carolina. In 1939 the General Assembly passed an Act (No. 311) designating the Mockingbird as the official Bird of the State. In 1948 an Act (No. 693) was passed repealing the 1939 Act and designating the Carolina Wren as the official State Bird instead of the Mockingbird.

The Carolina Wren is a member of the family Troglodytidae. It is present in all areas in South Carolina from the coast to the highest mountain. The song, which may be interpreted as tea-ket-tle, tea-ket-tle, tea-ket-tle, may be heard the year around, day and night, in all kinds of weather.

The Carolina Wren is slightly smaller than an English Sparrow and has a conspicuous white stripe over the eyes. The back of its body is rufous-red with underparts somewhat lighter in color. The tail, which is finely barred with black, is held erect when the bird is excited.

THE STATE HOUSE

The present State House was designed by John R. Niernsee, a native of Vienna, and construction was begun in 1855 on land adjacent to the old State House which had been erected in the post-Revolutionary era. The old building, along with priceless records, books and material for the new structure, was burned by Sherman's troops February 17, 1865. Work on the present State House proceeded intermittently until the structure was completed in its present form in 1907.



THE STATE FLAG



The South Carolina Flag was designed by Colonel William Moultrie in 1775. It was adopted, with the addition of the Palmetto Tree, as the State Flag in 1777. The crescent on the flag was taken from the hats of the troops of the 1st and 2nd regiments of regular troops of S. C. in 1775 and 1776. The Sullivan's Island Fort, which bombarded the British fleet June 28, 1776, was built of palmetto logs.

THE STATE TREE



The Palmetto Tree was officially adopted as the "State Tree of the State of South Carolina" March 17, 1939.

THE STATE FLOWER



The Carolina Yellow Jessamine was officially adopted by the General Assembly, February 1, 1924, as the State Flower.

THE STATE SEAL AND MOTTOES

"Animis Opibusque Parati"
(Prepared in Minds and Resources)

"Dum Spiro Spero"
(While I Breathe, I Hope)

The State Seal was authorized by Act of the General Assembly on April 2, 1776. It was first used by John Rutledge, President of the State, on May 22, 1777.

THE STATE SONG

The State song is "Carolina", by Henry Timrod, set to music by Anne Custis Burgess, and was adopted as the official song of the State by Act of the General Assembly, February 11, 1911.

SOUTH CAROLINA'S SIGNERS OF . . .

THE DECLARATION OF INDEPENDENCE:

Thomas Lynch, Jr.
Thomas Heyward, Jr.

Arthur Middleton
Edward Rutledge

THE UNITED STATES CONSTITUTION:

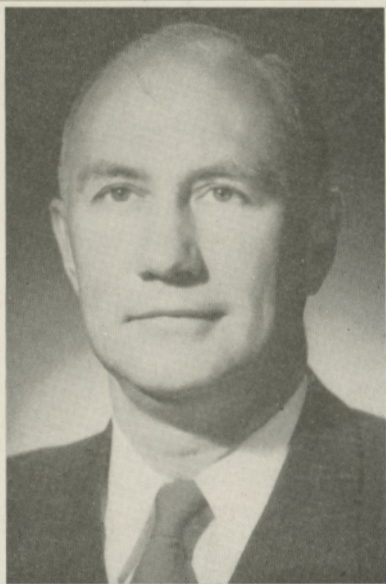
John Rutledge
Chas. Cotesworth Pinckney

Charles Pinckney
Pierce Butler





0 01 01 0138230 6



South Carolina offers varied advantages to those who wish to make their homes among us, and outstanding attractions for tourists. Our mild year-round climate and friendly people make it possible to live happily and comfortably, and to work under the most favorable conditions.

To industries seeking new opportunities, the State offers cooperative, capable employees, and ideal locations in close proximity to many essential raw materials.

Our forests possess great wealth; our agricultural lands yield abundant crops; and our parks, streams, and seacoast offer wonderful vacation possibilities.

As Governor, I want our citizens and our visitors to know that our government is a friendly one, devoted to the public service, and determined that the people's affairs shall be administered with honesty and efficiency.

Sincerely,

J. STROM THURMOND
GOVERNOR

BRIEF EARLY HISTORY

Colonization efforts were begun in 1526 by the Spaniards. Other colonization attempts were made from time to time by both the Spaniards and French. The name Carolina is derived from the Latin word "Carolus", which was first given as "Carolana" to this territory in 1629, in honor of Charles I of England when he granted it to Sir Robert Heath. It was regranted by Charles II in 1663 to eight Lords Proprietors. The first permanent town was Charles Town (now Charleston), settled by the English in 1670 on the South side of the Ashley River and changed to the North side in 1680. South Carolina ratified the constitution of the United States on May 23, 1788, being the 8th state to do so. The State seceded from the Union on December 20, 1860, the first state to withdraw. The first shot of the Confederate War was fired on April 12, 1861, on Fort Sumter, from a battery on James Island, in Charleston Harbor. The capital city is Columbia, which was established March 22, 1786, as the Capital of the State. Charleston had previously been the capital.

SOUTH CAROLINA TODAY

South Carolina today is one of the most progressive states in the union. Its people have diversified its agriculture. Its industry has expanded so tremendously since the war that it has attracted nation-wide attention for its industrial gains.

The skills of its people, widely recognized in some industrial fields, are being utilized successfully by different types of industry. The state's unexcelled system of highways, modern public schools and colleges, favorable tax structure, busy seaports, abundance of raw materials and electric power and her friendly and capable citizens all beckon to visitors and to new residents.

South Carolina is a state proud of its history, progressive with its present and confident of its future.

SOUTH CAROLINA OFFERS . . .

- GOVERNMENT: Friendly
- PEOPLE: Native born and capable
- RESOURCES: Unlimited
- AGRICULTURE: Diversified
- INDUSTRIAL LOCATIONS: Ideal
- VACATION AREAS: Unsurpassed

RESEARCH, PLANNING AND DEVELOPMENT BOARD
L. W. Bishop, Director
Columbia

South Carolina

Sc

