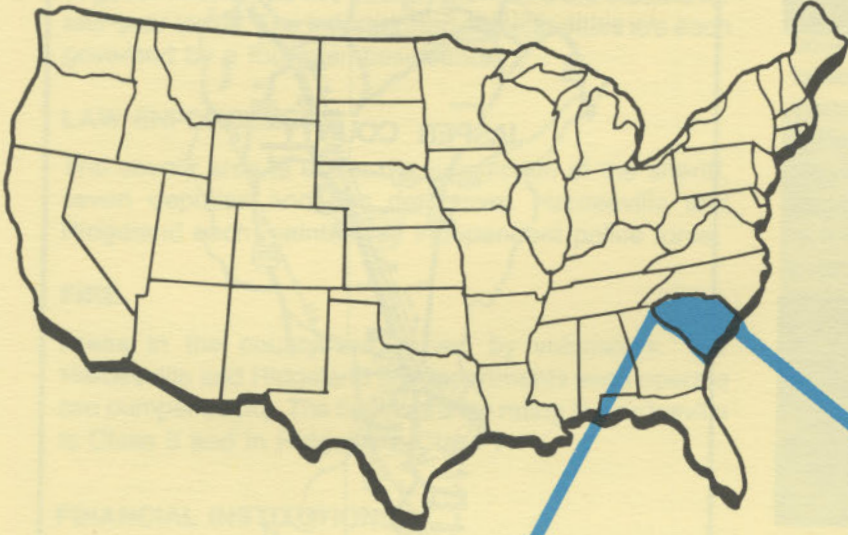


D 4925
2. J17
1985
Copy 1

JASPER COUNTY

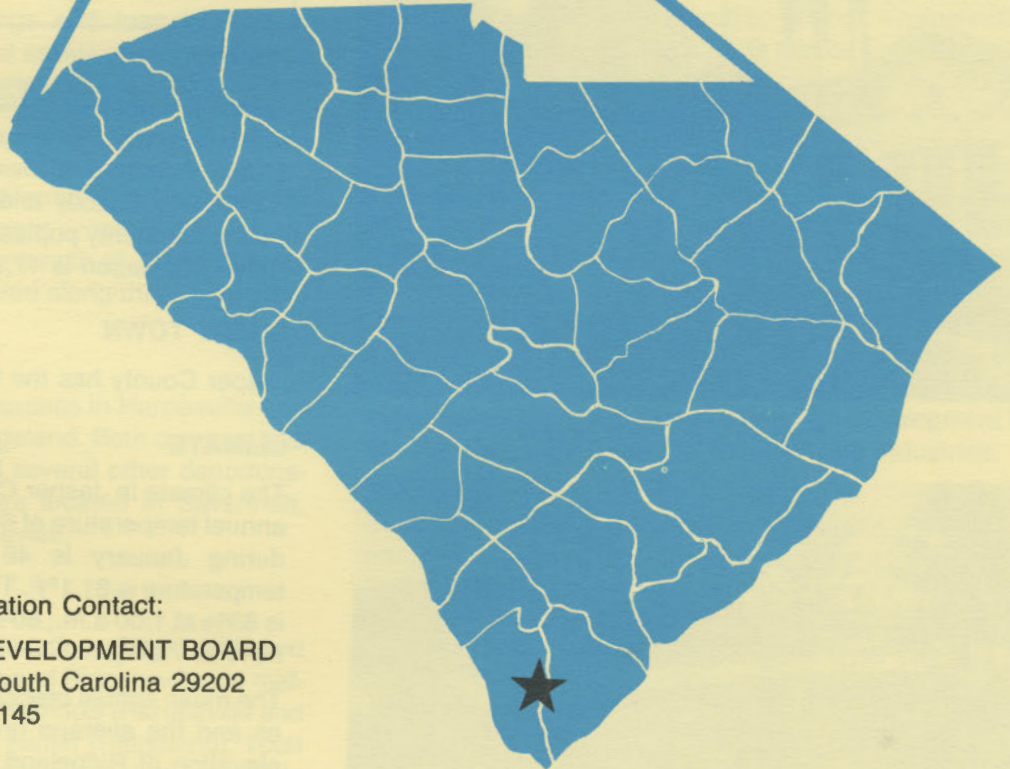
south carolina



S. C. STATE LIBRARY

MAR 6 1986

STATE DOCUMENTS

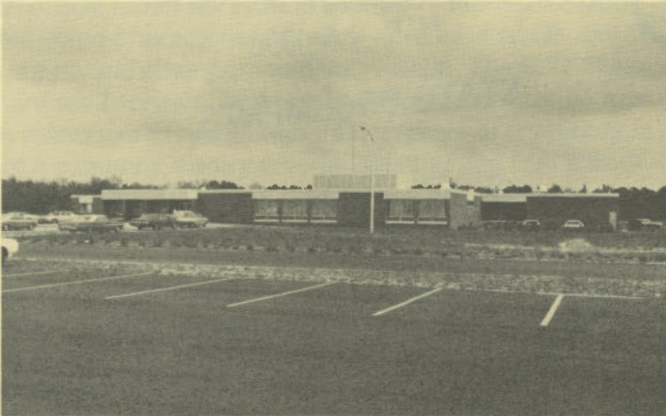


For Additional Information Contact:

SOUTH CAROLINA STATE DEVELOPMENT BOARD
P. O. Box 927, Columbia, South Carolina 29202
(803) 758-3145



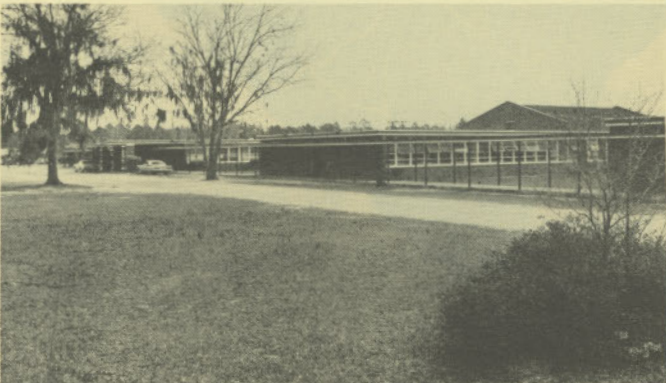
Federal Building
and U.S. Post Office



Live Oaks Hospital



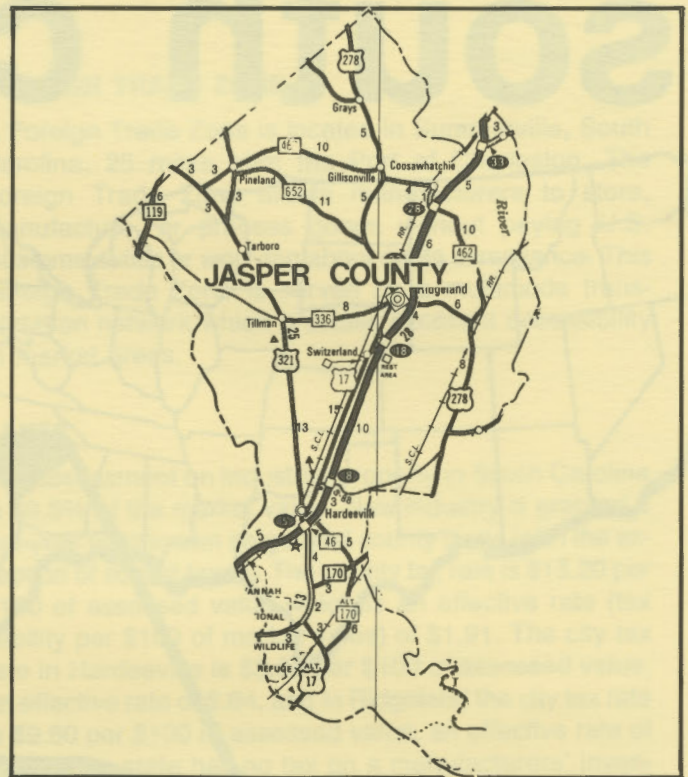
Frederick R. Pratt Library



Jasper Middle School

LOCATION

Jasper County is in the southwestern section of the state and forms the boundary with Georgia on the western side. Ridgeland, the county seat, is 118 miles southwest of Columbia, and 74 miles west of Charleston. Ridgeland is 265 miles east of Atlanta, 788 miles south of New York, and 2,788 miles east of San Francisco.



POPULATION

Jasper County had a 1980 census population of 14,504 which was a 22.0% increase over the 1970 population of 11,885. Incorporated towns in Jasper County in 1980 were Hardeeville (1,250) and Ridgeland (1,143). The 1985 estimated county population is 16,000 and the 1990 projected population is 17,900.

GREAT TOWN

Jasper County has the GREAT TOWN of Ridgeland.

CLIMATE

The climate in Jasper County is temperate with a mean annual temperature of 65.9°F. The average temperature during January is 49.9°F, while the average July temperature is 81.1°F. The average relative humidity daily is 83% at 1:00 a.m.; 86% at 7:00 a.m.; 54% at 1:00 p.m.; 68% at 7:00 p.m.

The mean annual precipitation in the county is 51.15 inches and the average growing season is 260 days. The elevation of Ridgeland is 30 feet above sea level and Hardeeville, 15 feet above sea level.

COMMUNICATIONS

Major large daily newspapers circulate in the county. In addition, two weeklies, *Low Country Weekly* and *Jasper County News* are published in Hardeeville and Ridgeland



respectively and circulate in the county. WBUG-AM is located in Ridgeland and to the county. TV station WTGS, located in the county, and seven additional television channels provide programs from the major networks and educational television. Telephone service is provided to Hardeeville by the Hargray Telephone Company and to Ridgeland by United Telephone Company of the Carolinas.

the University of South Carolina, both located in Savannah, Georgia has two four-year colleges.

GOVERNMENT

Jasper County is governed by a council-administrator form of government. The five council members are elected for four-year terms. The incorporated municipalities are each governed by a four-member council.

LAW ENFORCEMENT

The county area is under the jurisdiction of the sheriff, seven deputies and two detectives. Hardeeville and Ridgeland each maintain an independent police force.

FIRE

Areas in the county are served by volunteers. The Hardeeville and Ridgeland fire departments each operate two pumper trucks. The fire insurance rating in Hardeeville is Class 8 and in Ridgeland, Class 7.

FINANCIAL INSTITUTIONS

Financial services for the county are provided by two banks — a branch of each is located in Hardeeville and Ridgeland — and one savings and loan located in Ridgeland. The banks have total assets of \$1.2 billion and the savings and loan has assets of \$323 million.

HOTELS AND MOTELS

There are twelve motels in Hardeeville and eight in Ridgeland which provide overnight accommodations. Interstate 95 and U.S. 17 run the length of Jasper County and numerous motels are located along these corridors.

CHURCHES

There are seven Protestant churches in Hardeeville and ten Protestant churches in Ridgeland. Both communities have one Catholic church and several other denomination churches. Synagogues are located in Savannah, Georgia, 15 miles from Hardeeville.

EDUCATION

Jasper County is a single education district with two elementary schools (Hardeeville and Ridgeland), one middle school (Ridgeland), two high schools (Hardeeville and Ridgeland) and one vocational center (Ridgeland). Total enrollment in the 1985-86 school year is 2,957 students with a teaching staff of 161. The student/teacher ratio is 18.4 to 1. Private schooling is available in both communities.

Higher education facilities for the area are provided by the Beaufort Technical College and the Beaufort Regional

MEDICAL SERVICES

Medical services for the county are provided by the 31-bed Live Oaks Hospital located in Ridgeland. Specialized medical treatment facilities are available in Savannah. The county has nine privately-practicing medical doctors and three privately-practicing dentists.

RECREATION AND CIVIC FACILITIES

The main recreational activities in Jasper County are golf, boating, fishing and hunting. A number of freshwater lakes, the Savannah River and portions of the Intracoastal Waterway provide areas for fishing, boating and other water sports. A number of hunting clubs in the area provide opportunities for hunting deer, dove, quail, marsh hen and duck. The Sergeant Jasper Country Club has a 9-hole golf course, an olympic-size swimming pool and tennis courts. Coastal resort communities are within 30 miles of Ridgeland. Recreation centers offer day or night facilities for various activities including basketball and tennis courts.

POWER

Electric power is provided to the community and surrounding areas by South Carolina Electric and Gas Company and Palmetto Electric Cooperative.

Through 1989, SCE&G plans to maintain a generating capacity of 3,959 MW and will continue to generate its electric power from a combination of coal, hydroelectric, and nuclear fuel. SCE&G projects that its system reserve capacity will range from 23-38%; consequently, the immediate and future electric energy requirements of the service area will be accommodated.

Electric power for Palmetto Electric Cooperative is supplied by Central Electric Power Cooperative and South Carolina Public Service Authority. The generation capacity of plants in operation totals over 2,764 megawatts with approximately 73% produced from coal. Interconnections are maintained with all neighboring power suppliers. Sufficient reserves are available to meet immediate and future industrial power requirements. Economic Development Incentive Rates are available for qualifying industries.

WATER

Each community is supplied by deep wells. Hardeeville has three wells which have a combined capacity of 1,190,000 gallons per day and an average demand of 250,000 gallons per day. Ridgeland has three wells with a combined capacity of 288,000 gallons per day and an average daily demand of 250,000 gallons.

Analysis of water supplied in the community (in mg/L):

	Hardeeville	Ridgeland
Total solids	NA	NA
Alkalinity	110	150
Calcium	18	40
Hardness	90	130
Iron	.05	.05
pH	7.6	7.5

SEWER

Hardeeville utilizes a wastewater treatment plant which has a capacity of 600,000 gallons per day and has an average daily flow of 370,000 gallons.

Ridgeland utilizes an extended aeration treatment plant with a capacity of 250,000 gallons per day. Current daily flow on the system is 180,000 gallons.

LABOR

Because labor information may change in this area, a current labor availability report prepared and kept up to date by the S. C. State Development Board will be furnished to prospective manufacturers at their request. The comprehensive report will include sources of recruitable labor, labor force characteristics, work force skill levels, earnings data and other pertinent information. The S. C. State Board for Technical and Comprehensive Education has the resources to recruit and train workers in accordance with a company's entry criteria. This training is at little or no cost to the employer. A lead-time schedule is developed to coordinate recruiting, testing, selecting, and training. This assures that persons will be able to move from training to their respective jobs at the time the plant is ready for initial production.

TRANSPORTATION

Jasper County is served by I-95 which runs northeastward through the middle of the county. The communities of Hardeeville and Ridgeland are located alongside I-95. The county is also served by three United States highways and three South Carolina highways. The Seaboard System Railroad provides rail service to the county. Jasper County is served by 27 authorized motor carriers, most having terminals in nearby Savannah.

Freight Delivery Times:

To:	By Rail:	By Truck:
Atlanta	2 days	1 day
Baltimore	3 days	3 days
Chicago	4 days	3 days
Houston	6 days	3 days
New York	4 days	4 days
St. Louis	4 days	4 days
San Francisco	6 days	5 days

MAJOR EMPLOYERS

Name	Location	Product or Service	Employees
Atlantic Industries	Hardeeville	Medical equipment	30
Carolina Castings Corp.	Hardeeville	Castings	12
Fred Gretsch Enterprises, Ltd.	Ridgeland	Musical instruments	35
General Carbide Corp.	Ridgeland	Carbide die and wear parts	25
Reddish Lumber Co.	Hardeeville	Dimension timbers	19
Ridgeland Mfg. Co.	Ridgeland	Uniforms	133

The Savannah Municipal Airport offers regularly scheduled commercial airline service on American, Eastern, Delta, New York and Piedmont. Private aircraft utilize the Ridgeland Airport which has a paved and lighted runway of 3,100 feet and offers 100LL fuel, major airframe and major powerplant repairs, Unicom and Abvortac. Other aircraft services are available at the Savannah Municipal Airport.

FOREIGN TRADE ZONE

A Foreign Trade Zone is located in Summerville, South Carolina, 25 miles from the Port of Charleston. The Foreign Trade Zone allows manufacturers to store, manufacture, or process goods without paying U.S. Customs duties or worrying about quota compliance. This Foreign Trade Zone is served by a multimode transportation network which provides excellent accessibility to market areas.

TAXES

The assessment on industrial property in South Carolina is 10.5% of the market value. New industry is granted a five-year moratorium on general county taxes (with the exception of school taxes). The county tax rate is \$18.20 per \$100 of assessed value which is an effective rate (tax liability per \$100 of market value) of \$1.91. The city tax rate in Hardeeville is \$8.00 per \$100 of assessed value, an effective rate of \$.84, and in Ridgeland the city tax rate is \$9.60 per \$100 of assessed value, an effective rate of \$1.01. The state has no tax on a manufacturers' inventories, goods-in-process, raw materials or finished goods. Treatment facilities or equipment of manufacturing plants which control water or air pollution are exempt from all property taxation.

INDUSTRIAL SITES

Industrial sites are available in Jasper County with a wide range of geographic and topographic features. In all probability, a site that will meet the needs of most industries' requirements has been identified, catalogued, and entered into the State Development Board's Computerized Site Selection System. Detailed site information is available and will be furnished upon request.