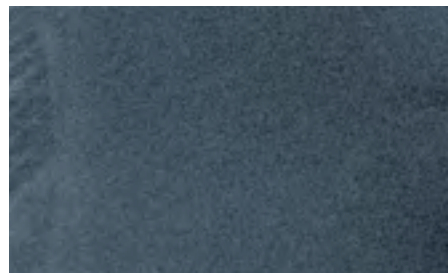
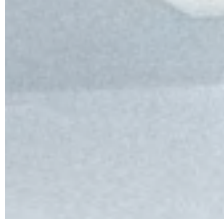


South Carolina Data

TRENDS



NOVEMBER 2021 ISSUE





SOUTH CAROLINA NONFARM EMPLOYMENT TRENDS FOR NOVEMBER — SEASONALLY ADJUSTED

The Current Employment Survey of businesses in South Carolina marked an increase of 4,600 nonfarm payroll jobs over the month to a level of 2,158,500.

- Industries that reported gains were in the Leisure and Hospitality (+2,500); Professional and Business Services (+2,100); Construction (+1,100); Other Services (+700); Financial Activities (+600); Government (+300); Education and Health Services (+200); and Information (+100) industry.
- Decreases were observed in the Manufacturing (-2,000) and Trade, Transportation, and Utilities (-1,000) industry.
- Retail Trade had a decrease of (-2,100).

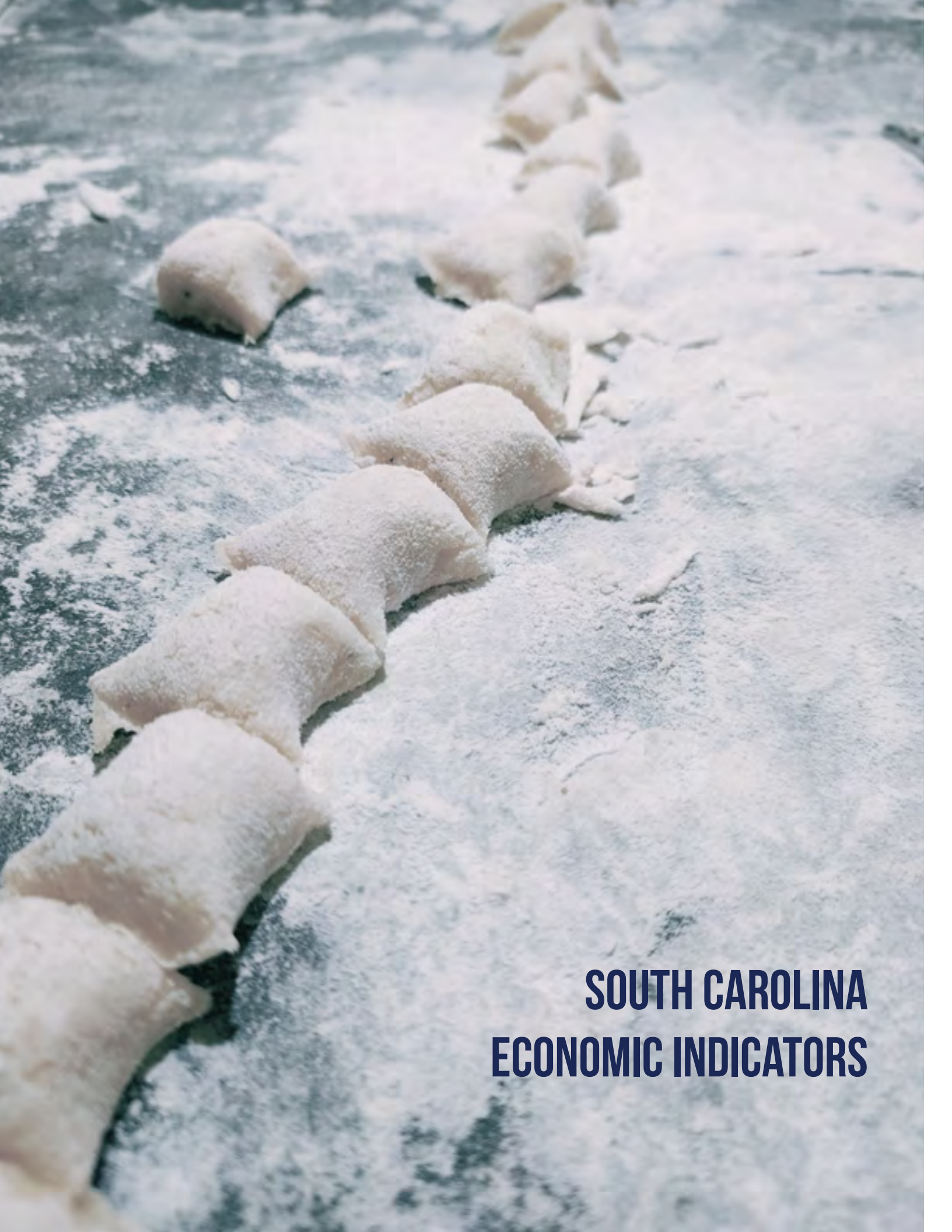
From November 2020 to November 2021, South Carolina's economy has picked up 54,100 seasonally adjusted, nonfarm jobs.

- Industries with strong growth were reported in the Trade, Transportation, and Utilities (+14,200); Leisure and Hospitality (+12,100); Education and Health Services (+5,400); Government (+5,200); Other Services (+4,900); Manufacturing (+4,800); Construction (+4,500); Professional and Business Services (+3,300); and Information (+900) industry.
- There was a decline noticed in the Financial Activities (-1,200) industry.
- Retail Trade had an increase of (+7,100) over the period.

For the Metropolitan Statistical Areas, seasonally adjusted, total nonfarm payroll job increases were seen in Charleston (+2,400); Greenville (+2,000); Spartanburg (+700); Sumter (+400) and Myrtle Beach (+100). Decrease was seen in Florence (-200) and Hilton Head (-100).

Over the year, all the Metropolitan Statistical Areas saw an increase in seasonally adjusted payroll. Leading with employment gains were in Charleston (+15,400); Greenville (+11,000); Columbia (+7,700); Myrtle Beach (+5,900); Spartanburg (+5,700); Hilton Head (+1,300); and Florence (+400). Sumter remained flat over the year.

To see the monthly not seasonally adjusted data series, go to
www.SCWorkforceInfo.com
(Employment and Wage Data section)



**SOUTH CAROLINA
ECONOMIC INDICATORS**

S.C. JOB POSTINGS BY INDUSTRY, NOVEMBER 2021

NAICS CODE	INDUSTRY	JOB POSTINGS
62	Health Care and Social Assistance	17,792
44-45	Retail Trade	11,672
72	Accommodation and Food Services	8,684
52	Finance and Insurance	6,505
31-33	Manufacturing	5,948
54	Professional, Scientific, and Technical Services	5,216
92	Public Administration	3,328
61	Educational Services	3,084
56	Administrative and Support and Waste Management and Remediation Services	2,942
48-49	Transportation and Warehousing	2,828
53	Real Estate and Rental and Leasing	2,518
23	Construction	1,922
51	Information	1,905
81	Other Services (except Public Administration)	1,404
42	Wholesale Trade	844
71	Arts, Entertainment, and Recreation	800
22	Utilities	489
11	Agriculture, Forestry, Fishing and Hunting	125
21	Mining, Quarrying, and Oil and Gas Extraction	105
55	Management of Companies and Enterprises	92

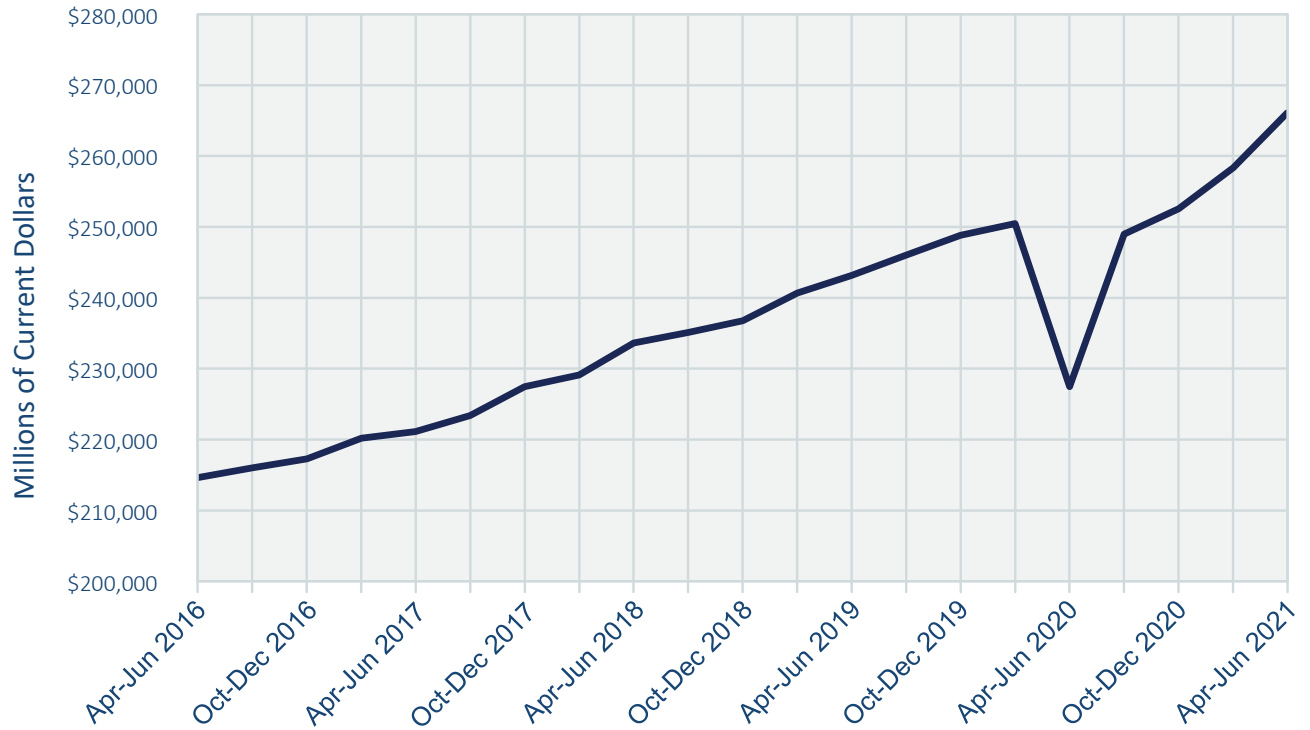
Source: Labor Insight Jobs (Burning Glass Technologies)

S.C. AVERAGE WEEKLY WAGE BY INDUSTRY GROUP, 2021 Q2

INDUSTRY GROUP	AVG. WEEKLY WAGE	PERC CHG FROM YR AGO
Total, All Industries	\$977	5.2%
Natural Resources and Mining	\$887	7.9%
Construction	\$1,117	6.5%
Manufacturing	\$1,216	6.6%
Trade, Transportation and Utilities	\$882	6.8%
Information	\$1,532	17.0%
Financial Activities	\$1,340	5.8%
Professional and Business Services	\$1,108	4.5%
Education and Health Services	\$1,031	6.4%
Leisure and Hospitality	\$424	15.5%
Other Services	\$765	6.5%
Public Administration	\$983	3.1%

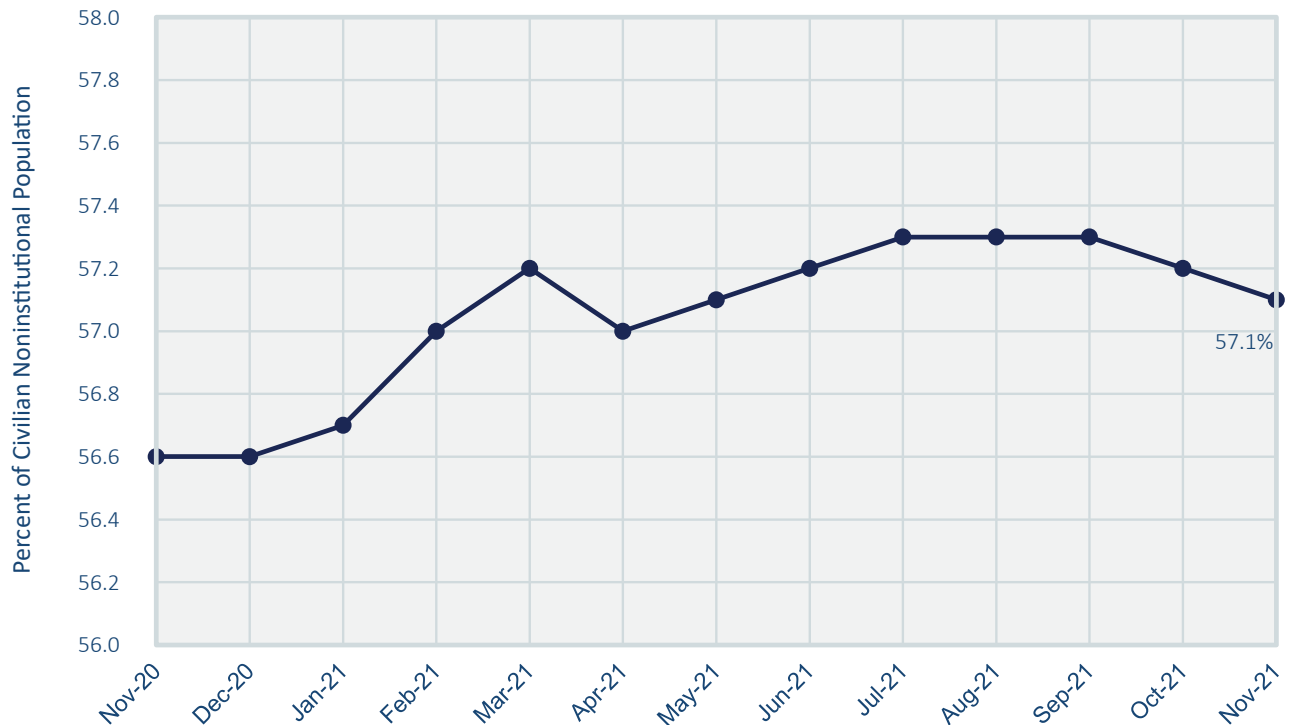
Source: DEW, Quarterly Census of Employment and Wages (QCEW)

S.C. GROSS DOMESTIC PRODUCT



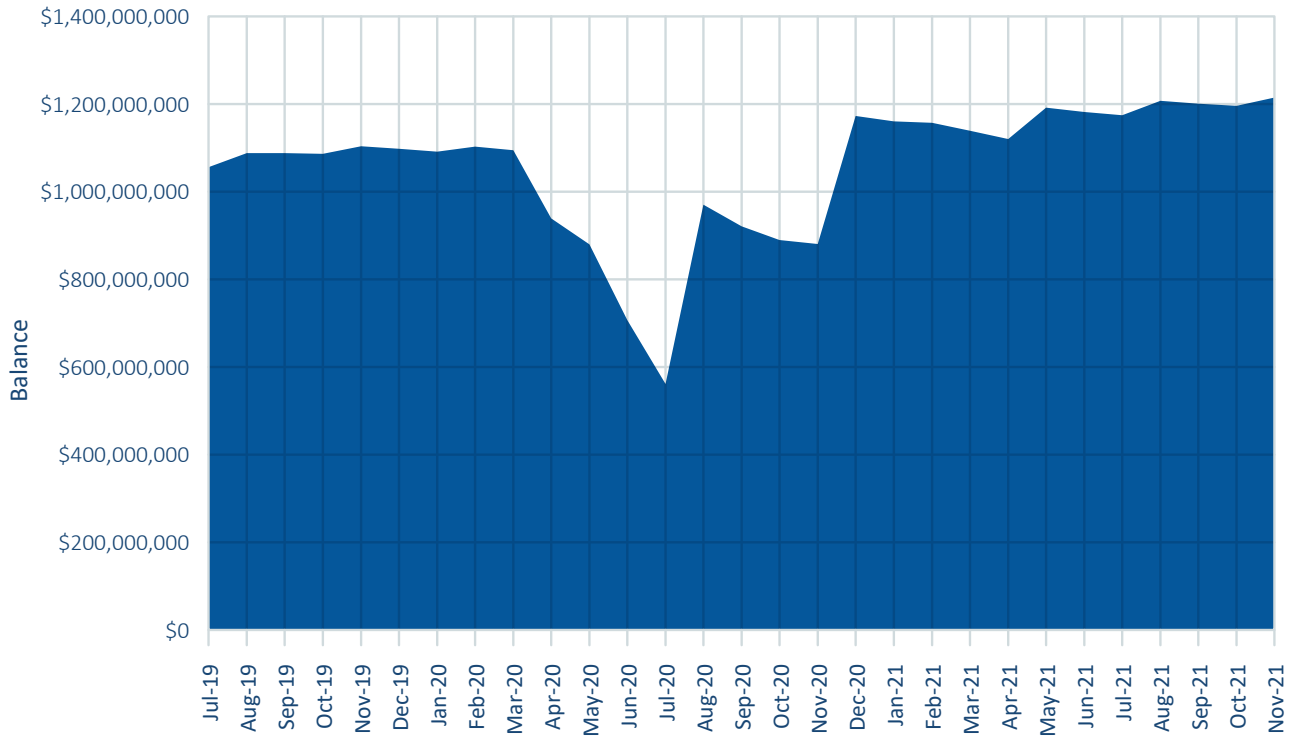
Source: U.S. Bureau of Economic Analysis

S.C. LABOR FORCE PARTICIPATION RATE



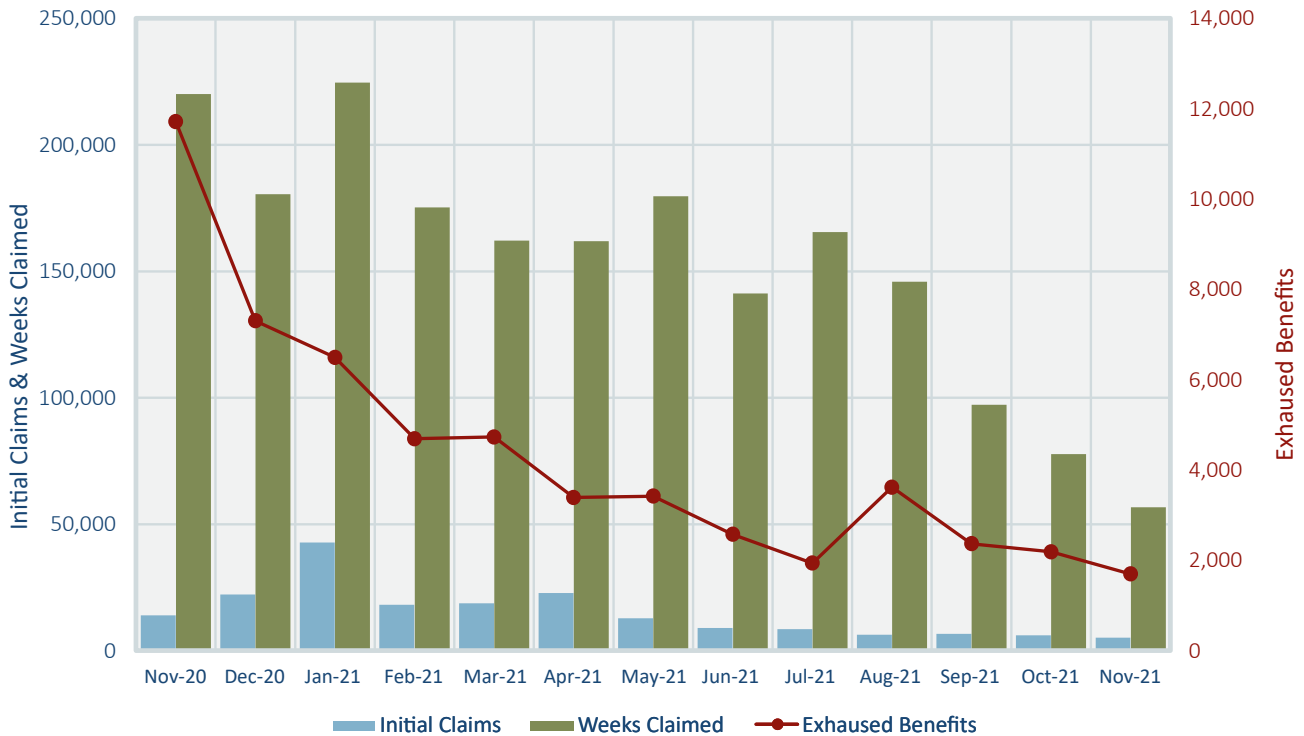
Source: DEW, Local Area Unemployment Statistics (LAUS)

S.C. UNEMPLOYMENT TRUST FUND REPORT BALANCE



Source: U.S. Department of the Treasury, Bureau of the Fiscal Service

S.C. MONTHLY UNEMPLOYMENT CLAIMS STATISTICS



Source: U.S. Department of Labor

Find more information at
scworkforceinfo.com



Do you need some help finding the data you need? Have a great idea for a research project you'd like to discuss with someone? We love to collaborate!

DATA TRENDS is prepared by the LMI Division of the S.C. Department of Employment and Workforce with funding provided by the US Department of Labor. Featured data is prepared in conjunction with the Bureau of Labor Statistics and current month estimates are always preliminary, with all previous data subject to revision.