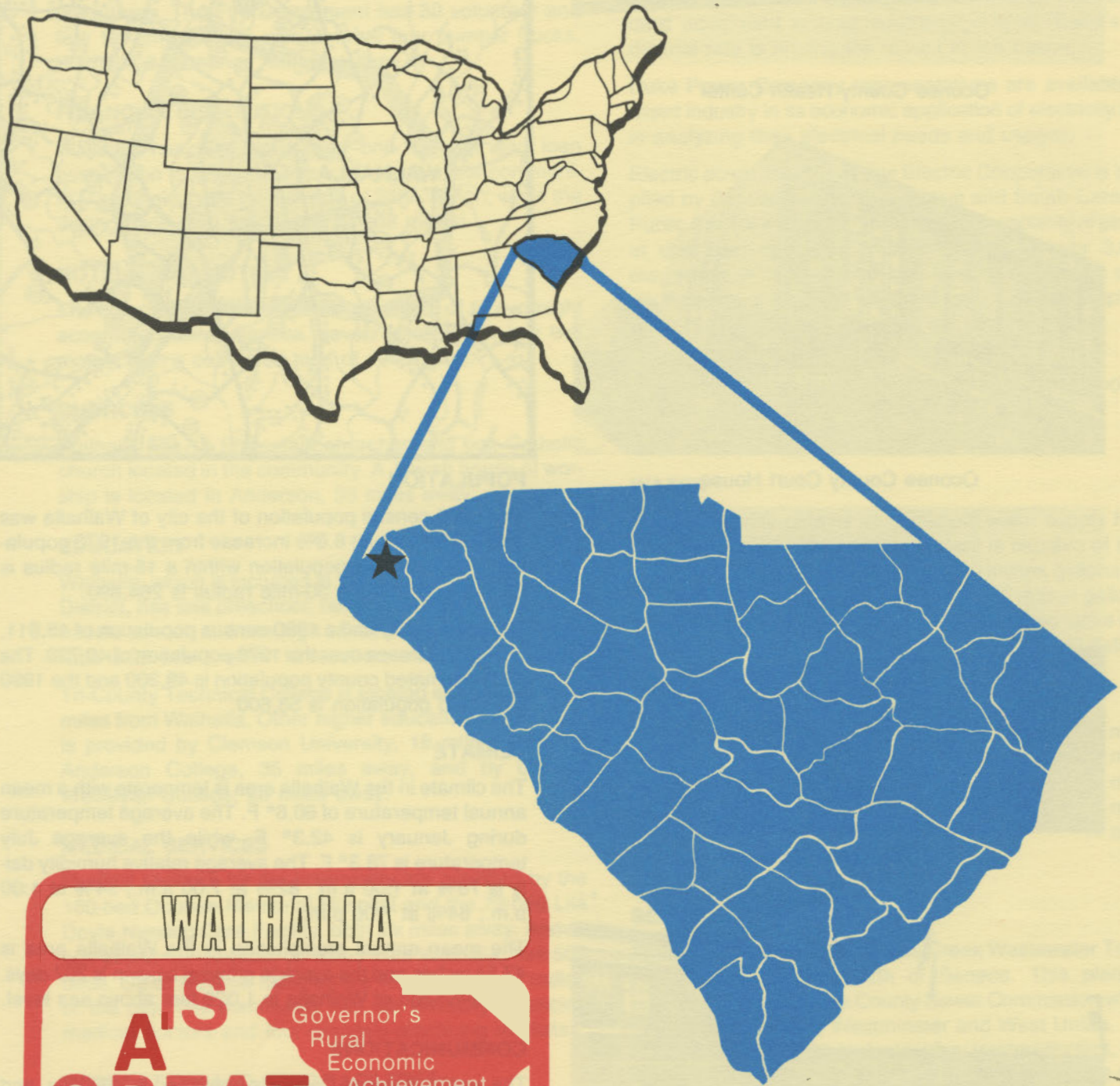


D4925
2. W15
1983

WALHALLA

south carolina



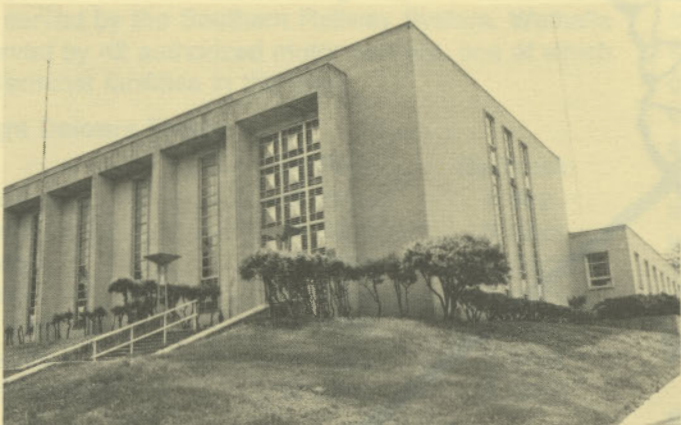
WALHALLA
IS
A GREAT TOWN

Governor's
Rural
Economic
Achievement
Trophy

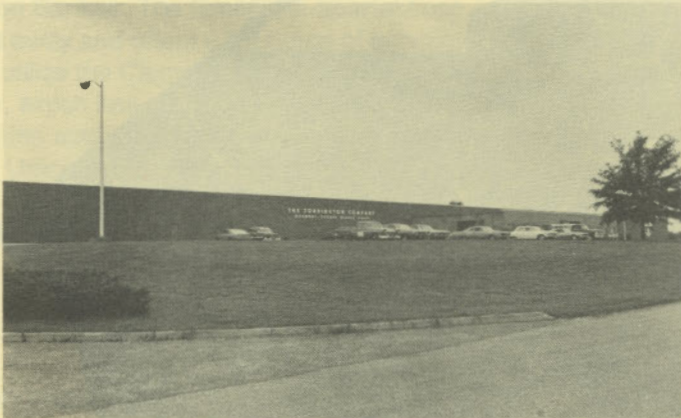
S. C. STATE LIBRARY
JUN 7 1984
STATE DOCUMENTS



Oconee County Health Center



Oconee County Court House



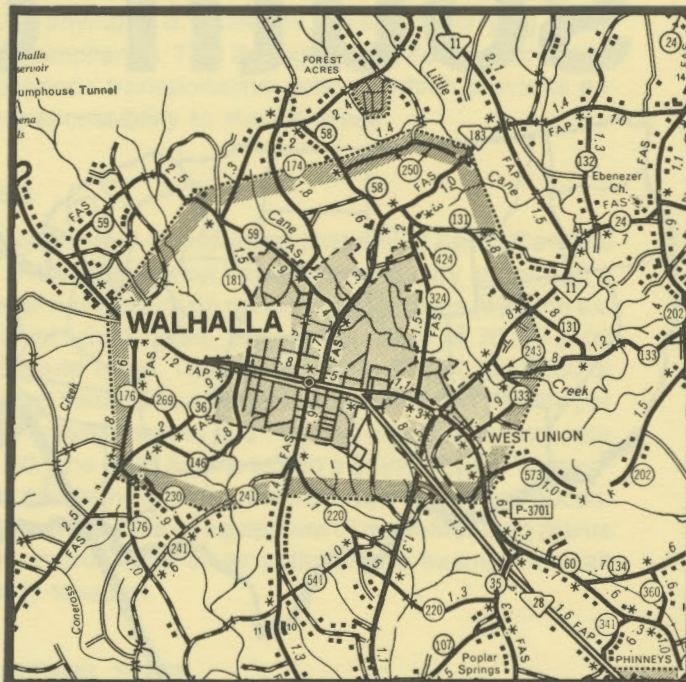
The Torrington Company



Walhalla City Hall and Fire Department

LOCATION

As depicted on the cover, Walhalla, seat of Oconee County, is in the northwestern section of the state. Charleston, South Carolina's busiest port, is 252 miles southeast. Columbia is 147 miles southeast and Greenville is 46 miles east. Walhalla is 120 miles northeast of Atlanta; 745 miles south of New York; and 2,643 miles east of San Francisco.



POPULATION

The 1980 census population of the city of Walhalla was 3,977. This was an 8.6% increase from the 1970 population of 3,662. The population within a 15-mile radius is 66,512 and within a 30-mile radius is 264,890.

Oconee County had a 1980 census population of 48,611, a 19.4% increase over the 1970 population of 40,728. The 1981 estimated county population is 49,300 and the 1990 projected population is 58,600.

CLIMATE

The climate in the Walhalla area is temperate with a mean annual temperature of 60.6° F. The average temperature during January is 42.3° F, while the average July temperature is 78.3° F. The average relative humidity daily is 78% at 1:00 a.m.; 82% at 7:00 a.m.; 54% at 1:00 p.m.; 64% at 7:00 p.m.

The mean annual precipitation in the Walhalla area is 47.54 inches and the average growing season is 207 days. The elevation of Walhalla is 1,029 feet above sea level.

COMMUNICATIONS

The weekly *Keowee Courier* is published in Walhalla, and two dailies circulate in the community. WGOG Radio Station has AM broadcast facilities in the community, and several other stations serve the city including WSNW in Seneca. Television reception in the community is available from three stations, representing the three major networks. ETV and cable TV are available. Telephone service in the community is provided by Southern Bell.

GOVERNMENT

The community has a mayor-council form of municipal government. The six city council members are elected for two-year terms. Oconee County is governed locally by a council-supervisor, with the five council members and the supervisor elected for four-year terms.

POLICE AND FIRE

The Walhalla Police Department has nine full-time police officers. The department operates two radio equipped patrol cars. The Fire Department has 30 volunteer and four full-time firemen who operate four pumper trucks. Walhalla's insurance rating is Class 6.

FINANCIAL INSTITUTIONS

Walhalla has two banks and one savings and loan association to serve the financial needs of the community. The banks have total assets of \$854 million, while the savings and loan has assets of \$88 million.

HOTELS AND MOTELS

The community has one motel with a total of 18 overnight accommodations. Seneca, seven miles away, has two motels with a combined total of 100 rooms.

CHURCHES

Walhalla has 15 Protestant churches and one Catholic church located in the community. A Jewish house of worship is located in Anderson, 35 miles away.

EDUCATION

Walhalla, which is included in the Oconee County School District, has one preschool; two elementary schools; one middle school; and one high school. The student/teacher ratio is 20.1 to 1, with 118 teachers and 2,367 students.

Tri-County Technical College is located at Pendleton, 26 miles from Walhalla. Other higher education for the area is provided by Clemson University, 18 miles away; by Anderson College, 35 miles away, and by Central Wesleyan College, 28 miles away.

MEDICAL SERVICES

Medical services for the community are provided by the 160-bed Oconee Memorial Hospital and the 79-bed Lila Doyle Nursing Care Facility, both six miles away. Anderson Memorial Hospital, 35 miles from Walhalla, has 508 beds. Other medical facilities are within a 50-mile radius of the city. The community has ten privately-practicing medical doctors and four privately-practicing dentists.

RECREATION AND CIVIC FACILITIES

Recreation facilities consist of one swimming pool, four tennis courts, several athletic fields and one city park. The Oconee County Country Club, seven miles away, has an 18-hole golf course. Oconee State Park, 11 miles away, has facilities for camping, fishing, swimming and picnicking. Numerous large lakes provide areas for water sports.

The county-owned High Falls Park is located on Lake Keowee, 12 miles from Walhalla. The park has camp sites, picnic facilities, softball fields, tennis courts, modern bathhouse and pavilion, swimming area and paved boat ramps. Mountain resorts are 35 miles from the city.

POWER

Electric power is available to the community and surrounding areas from Duke Power Company and Blue Ridge Electric Cooperative. Duke Power service is supplied to any industrial customer at utilization voltage from standard equipment without additional charge. Duke's industrial rate is among the lowest in the nation.

Duke Power Company representatives are available to assist industry in its economic application of electricity and in analyzing their electrical needs and usages.

Electric power for Blue Ridge Electric Cooperative is supplied by Central Power Cooperative and South Carolina Public Service Authority. The generation capacity of plants in operation or under construction totals over 3,000 megawatts with 73% produced from coal. Inter-tie connections are maintained with neighboring power supplies.

FUELS

Natural gas is supplied by Fort Hill Natural Gas Authority.

WATER

The community obtains its municipal water supply from Coneross Creek. The treatment plant is capable of supplying water at a maximum rate of 3.0 million gallons per day, with an average daily demand of 1.5 million gallons. Treated water storage consists of two elevated tanks with a total capacity of 750,000 gallons and 425,000 gallons in ground storage.

Analysis of water supplied in the community:

Total solids	20 mg/L
Alkalinity	15 mg/L
Calcium	2 mg/L
Hardness	8 mg/L
Iron	.1 mg/L
pH	7.4

SEWER

Walhalla is served by Coneross Creek Wastewater Treatment Plant, located south of Seneca. This plant is operated by the Oconee County Sewer Commission which also serves Seneca, Westminster and West Union. The treatment plant is a biological tertiary treatment plant, with the capacity to treat 5 million gallons per day. Current daily flows total approximately 2 million gallons per day.

LABOR

Because labor information may change in this area, a current labor availability report prepared and kept up to date by the S. C. State Development Board will be furnished

to prospective manufacturers at their request. The comprehensive report will include sources of recruitable labor, labor force characteristics, work force skill levels, earnings data and other pertinent information. The S. C. State Board for Technical and Comprehensive Education has the resources to recruit and train workers in accordance with a company's entry criteria. This training is at little or no cost to the employer. A lead-time schedule is developed to coordinate recruiting, testing, selecting, and training. This assures that persons will be able to move from training to their respective jobs at the time the plant is ready for initial production.

TRANSPORTATION

Walhalla is served by one interstate highway, I-85 (22 miles), and two South Carolina highways. The community is served by the Southern Railway System. Walhalla is served by 42 authorized motor carriers, one of which has terminal facilities in the area.

Freight Delivery Times:

To:	By Rail:	By Truck:
Atlanta	2 days	1 day
Boston	6 days	3 days
Chicago	6 days	3 days
Houston	9 days	4 days
New York	4 days	3 days
St. Louis	5 days	3 days
San Francisco	12 days	5 days

The Anderson Municipal Airport, 35 miles from the community, offers regularly scheduled commercial airline service on Bankair. The Greenville-Spartanburg Jetport is 55 miles away and offers a full range of services. Private aircraft utilize the Clemson-Oconee County Airport, 18 miles away, which has a paved and lighted 4,100-foot runway. Services available at the county airport are charter service, Unicom, tiedowns, hangar storage, major airframe

and major powerplant repairs, 100LL fuel, RBn and Vortac.

FOREIGN TRADE ZONE

A Foreign Trade Zone is located in Summerville, South Carolina, 25 miles from the Port of Charleston and 227 miles from the community. The Foreign Trade Zone allows manufacturers to store, manufacture or process goods without paying U.S. Customs duties or worrying about quota compliance. This Foreign Trade Zone is served by a multimode transportation network which provides excellent accessibility to market areas.

TAXES

The assessment on industrial property in South Carolina is 10.5% of the market value. New industry is granted a five-year moratorium on general county taxes (with the exception of school taxes). The city tax rate is \$6.70 per \$100 of assessed value. The county rate is \$12.40 per \$100 of assessed value. The effective city tax rate (tax liability per \$100 of market value) is \$.70. The effective county rate is \$1.30. The state has no tax on a manufacturer's inventories, goods-in-process, raw materials or finished goods. Treatment facilities or equipment of manufacturing plants which control water or air pollution are exempt from all property taxation.

INDUSTRIAL SITES

Industrial sites are available in Walhalla with a wide range of geographic and topographic features. In all probability, a site that will meet the needs of most industries' requirements has been identified, catalogued, and entered into the State Development Board's Computerized Site Selection System. Detailed site information is available and will be furnished upon request.

MAJOR EMPLOYERS

Name	Product or Service	Employees
Andrea Fashions, Inc.	Dresses	212
Avondale Mills	Spun yarns	225
Sangamo-Weston, Inc.	Watt-hour meters	1,010
Stone Mfg. Co.	Apparel	300
Torrington Company	Bearings	200

For Additional Information Contact:

SOUTH CAROLINA STATE DEVELOPMENT BOARD
 P. O. Box 927, Columbia, South Carolina 29202
 (803) 758-3145

