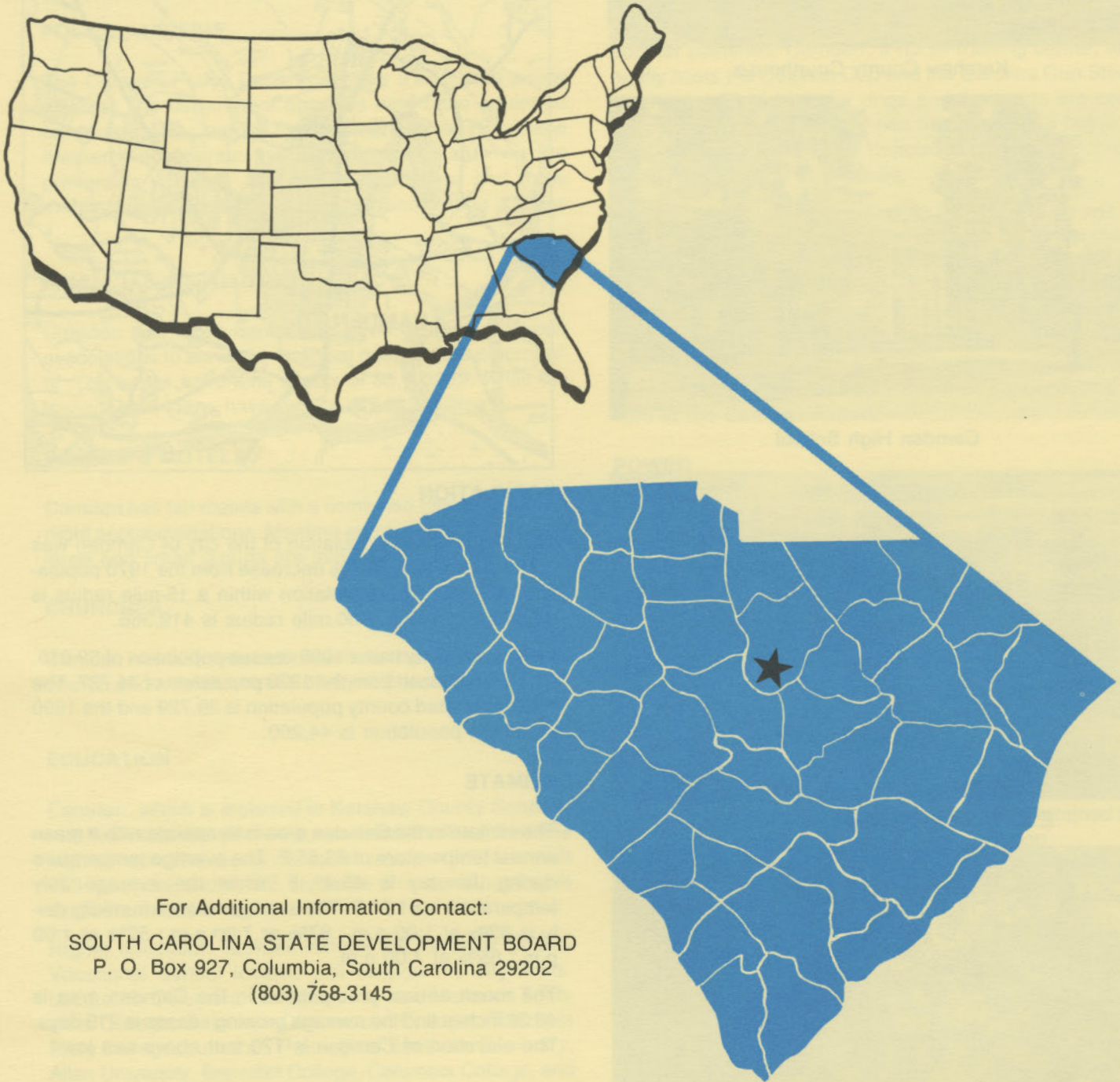


D4925
2.C15-2
1984
Copy 1

CAMDEN

south carolina



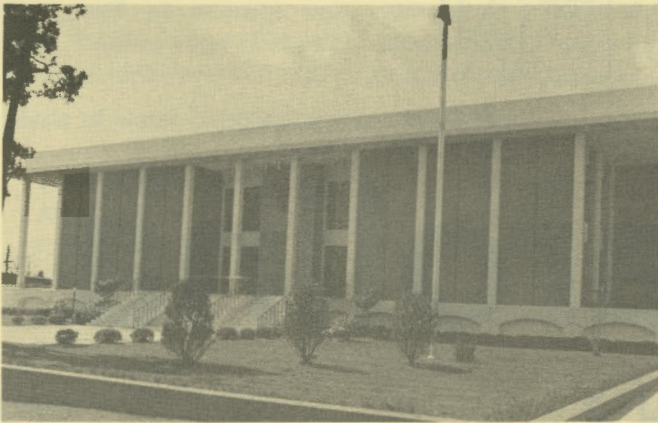
For Additional Information Contact:

SOUTH CAROLINA STATE DEVELOPMENT BOARD
P. O. Box 927, Columbia, South Carolina 29202
(803) 758-3145

S. C. STATE LIBRARY

AUG 15 1984

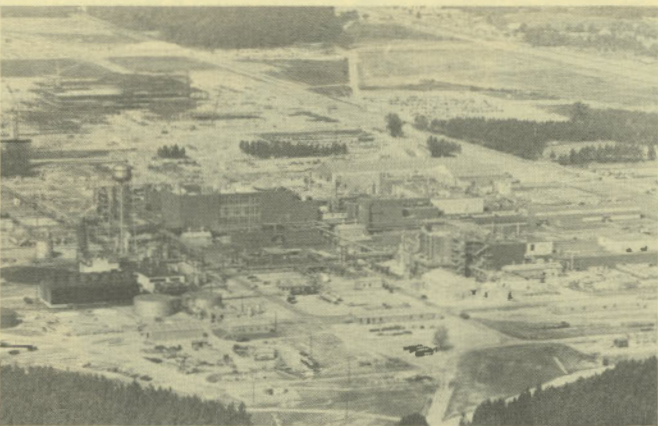
STATE DOCUMENTS



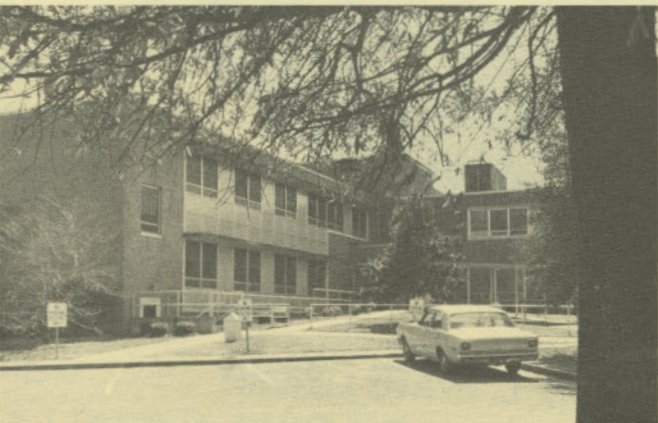
Kershaw County Courthouse



Camden High School



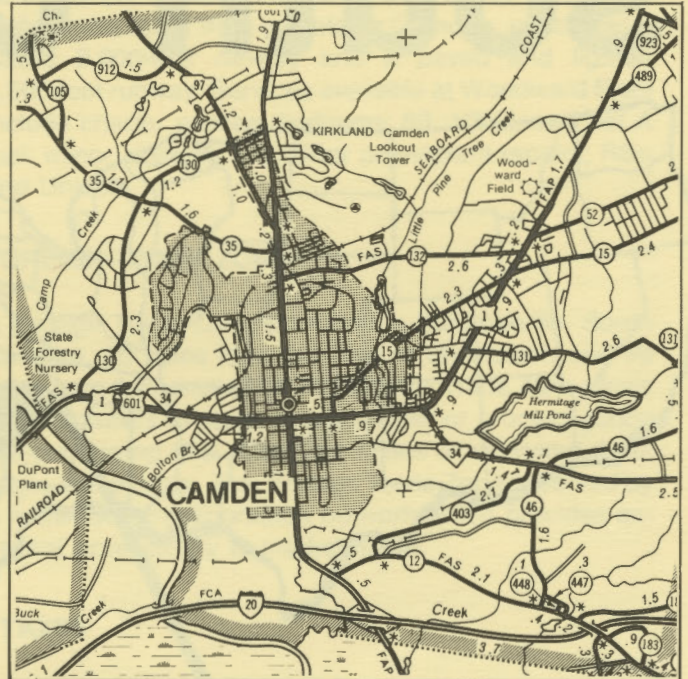
E. I. Du Pont De Nemours & Company



Kershaw County Memorial Hospital

LOCATION

As depicted on the cover, Camden, seat of Kershaw County, is in the central section of the state. Charleston, South Carolina's busiest port, is 124 miles south. Columbia is 32 miles southwest and Greenville is 133 miles northwest. Camden is 246 miles east of Atlanta; 663 miles south of New York; and 2,769 miles east of San Francisco.



POPULATION

The 1980 census population of the city of Camden was 7,462. This was a 12.5% decrease from the 1970 population of 8,532. The population within a 15-mile radius is 37,850 and within a 30-mile radius is 419,366.

Kershaw County had a 1980 census population of 39,015, a 12.3% increase from the 1970 population of 34,727. The 1983 estimated county population is 39,729 and the 1990 projected population is 44,200.

CLIMATE

The climate in the Camden area is temperate with a mean annual temperature of 63.5° F. The average temperature during January is 45.4° F, while the average July temperature is 81.2° F. The average relative humidity daily is 83% at 1:00 a.m.; 87% at 7:00 a.m.; 52% at 1:00 p.m.; 65% at 7:00 p.m.

The mean annual precipitation in the Camden area is 46.36 inches and the average growing season is 219 days. The elevation of Camden is 170 feet above sea level.

COMMUNICATIONS

The *Chronicle Independent* is published tri-weekly in Camden and five dailies circulate in the community. Two radio stations, WCAM-AM and WPUB-AM/FM, transmit from the Camden area. Six television stations representing the three major networks and educational television

can be received in the community. Southern Bell of Bell South Corporation provides telephone service in the area.

GOVERNMENT

The community has a council-manager form of municipal government. The four city council members and the mayor are elected for four-year terms. Kershaw County is governed locally by a council-administrator form of government. The five council members are elected for four-year terms.

POLICE AND FIRE

The Camden Police Department has 31 full-time police officers. The department operates nine radio equipped patrol cars. The Camden Fire Department has 28 full-time firemen who operate five pumper trucks and two fire prevention vehicles, one equipment carrier, and three mobile rescue units. Camden's insurance rating is Class 4.

FINANCIAL INSTITUTIONS

Camden has three banks and three savings and loan associations to serve the financial needs of the community. The banks have total assets of \$5.0 billion while the savings and loans have assets of \$483 million.

HOTELS & MOTELS

Camden has ten motels with a combined total of 250 overnight accommodations. Meeting and banquet facilities for large and small groups are available in the city.

CHURCHES

Camden has 32 Protestant churches, one Roman Catholic church and a Jewish house of worship located in the city.

EDUCATION

Camden, which is included in Kershaw County Schools, has five elementary schools, one middle school, and one high school. The student/teacher ratio is 18.5 to 1, with 243 teachers and 4,492 students. Private schooling is available in the area.

Higher education facilities include the Kershaw County Vocational School located just outside the city limits. Located in Columbia, 32 miles away, are Midlands Technical College, Columbia Commercial College, Columbia Bible College, Lutheran Theological Southern Seminary, Allen University, Benedict College, Columbia College, and the University of South Carolina.

MEDICAL SERVICES

The 121-bed Kershaw County Memorial Hospital located in the city provides medical services to the county's residents. One wing of the hospital is an 88-bed long-term

care facility. Nearby Columbia has four general hospitals, an Army Hospital, the State Mental Hospital and the Veterans Administration Hospital. The community has 31 privately-practicing medical doctors and 11 privately-practicing dentists.

RECREATION AND CIVIC FACILITIES

Camden has a year-round recreation program and 178 acres of city parks. N. R. Goodale State Park, two miles away, is a 2,300-acre park with two lakes, picnic and game facilities. Wateree Lake is a 22-mile navigable stream for water sports. Golf, hunting, and horseback riding are popular pastimes. Camden, a horse training center, annually hosts the Colonial Cup and the Carolina Cup Steeplechases. Field trials for dogs and fox hunts are conducted in the area. The city has two theaters, a bowling alley and a skate rink. One 18-hole golf course and three 9-hole courses are in the area.

The Carroll K. Bassett Building for the performing arts is the newest addition to the Fine Arts Center of Kershaw County. Various stage productions, musical concerts and art exhibits are continuing daily at the Center. Additionally, the annual MAD (Music, Arts and Drama) Festival brings numerous performances to Camden. The annual Palmetto Balloon Classic, held each spring, fills the Camden skies with multi-colored hot-air balloons, and is held at the Camden Airport.

POWER

Electric power is available to the community and surrounding areas from Carolina Power & Light Company (CP&L) and Black River Electric Cooperative. CP&L has firm generation capacity of 8,000 megawatts and forecasts sufficient reserves to accommodate industrial growth in its service area. Economical power from nuclear energy accounts for a major portion of CP&L's generation and serves to keep the company's rates below the national average. Usually CP&L will install, at no cost to the customer, the necessary equipment to supply the electrical requirements. Alternative rate schedules are available to the industrial customer with the most economical rate for a specific application determined by the characteristics of the user's consumption.

Electric power for Black River Electric Cooperative is supplied by Central Electric Cooperative and South Carolina Public Service Authority. The generation capacity of plants in operation or under construction totals 3,000 megawatts with approximately 73% produced from coal. Inter-tie connections are maintained with neighboring power supplies.

FUELS

Natural gas is supplied by Carolina Pipeline Company.

WATER

Camden draws its municipal water supply from Pine Tree Creek. The system has a daily capacity of 4,000,000

gallons, with an average daily demand of 2,000,000 gallons. Treated water storage capacity is 900,000 gallons in elevated tanks and 900,000 gallons in ground storage.

Analysis of water supplied in the community:

Total solids	54 mg/L
Alkalinity	10 mg/L
Calcium	2 mg/L
Hardness	6 mg/L
Iron	.1 mg/L
pH	7.0

SEWER

Camden's treated sewage disposal system has the design capacity to treat 1.9 million gallons per day and is currently averaging 1.3 million gallons per day.

LABOR

Because labor information may change in this area, a current labor availability report prepared and kept up to date by the S. C. State Development Board will be furnished to prospective manufacturers at their request. The comprehensive report will include sources of recruitable labor, labor force characteristics, work force skill levels, earnings data and other pertinent information. The S. C. State Board for Technical and Comprehensive Education has the resources to recruit and train workers in accordance with a company's entry criteria. This training is at little or no cost to the employer. A lead time schedule is developed to coordinate recruiting, testing, selecting, and training. This assures that persons will be able to move from training to their respective jobs at the time the plant is ready for initial production.

TRANSPORTATION

Camden is served by one interstate highway, I-20 (2 miles away), three United States highways and four South Carolina highways. The community is served by two railroads: The Seaboard System and the Southern Railway System. Camden is served by 44 authorized motor carriers, three of which have terminal facilities in the community.

Freight Delivery Times:

To:	By Rail:	By Truck:
Atlanta	3 days	1 day
Boston	6 days	4 days
Chicago	6 days	3 days
Houston	9 days	3 days

MAJOR EMPLOYERS

Name	Product or Service	Employees
E. I. Du Pont De Nemours & Co.	Synthetic organic fibers	3,088
Hermitage, Inc.	Medical gauze	403
Kendall Company	Surgical gauze	330
Skyline Mfg. Co.	Children's apparel	915

New York	4 days	3 days
St. Louis	6 days	2 days
San Francisco	12 days	5 days

The Columbia Metropolitan Airport, 38 miles away, offers regularly scheduled commercial airline service on Delta, Eastern, United, Bankair and Piedmont. Columbia has a modern air freight terminal which handles air freight for all the major airlines. Private aircraft utilize Woodward Field, three miles from downtown Camden, which has a paved 3,000-foot runway and a paved and lighted 4,500-foot runway. Services available at Woodward Field include charter service; tiedowns; 80, 100LL and Jet A fuel; minor airframe and minor powerplant repairs; RBN and Unicom.

FOREIGN TRADE ZONE

A Foreign Trade Zone is located in Summerville, South Carolina, 25 miles from the Port of Charleston and 99 miles from the community. The Foreign Trade Zone allows manufacturers to store, manufacture, or process goods without paying U.S. Customs duties or worrying about quota compliance. This Foreign Trade Zone is served by a multimode transportation network which provides excellent accessibility to market areas.

TAXES

The assessment on industrial property in South Carolina is 10.5% of the market value. New industry is granted a five-year moratorium on general county taxes (with the exception of school taxes). The city tax rate is \$6.50 per \$100 assessed value. The county rate is \$12.90 per \$100 assessed value. The effective city tax rate (tax liability per \$100 of market value) is \$.68. The effective county rate is \$1.35. The state has no tax on a manufacturer's inventories, goods-in-process, raw materials or finished goods. Treatment facilities or equipment of manufacturing plants which control water or air pollution are exempt from all property taxation.

INDUSTRIAL SITES

Industrial sites are available in Camden with a wide range of geographic and topographic features. In all probability, a site that will meet the needs of most industries' requirements has been identified, catalogued, and entered into the State Development Board's Computerized Site Selection System. Detailed site information is available and will be furnished upon request.

SOUTH CAROLINA STATE LIBRARY

