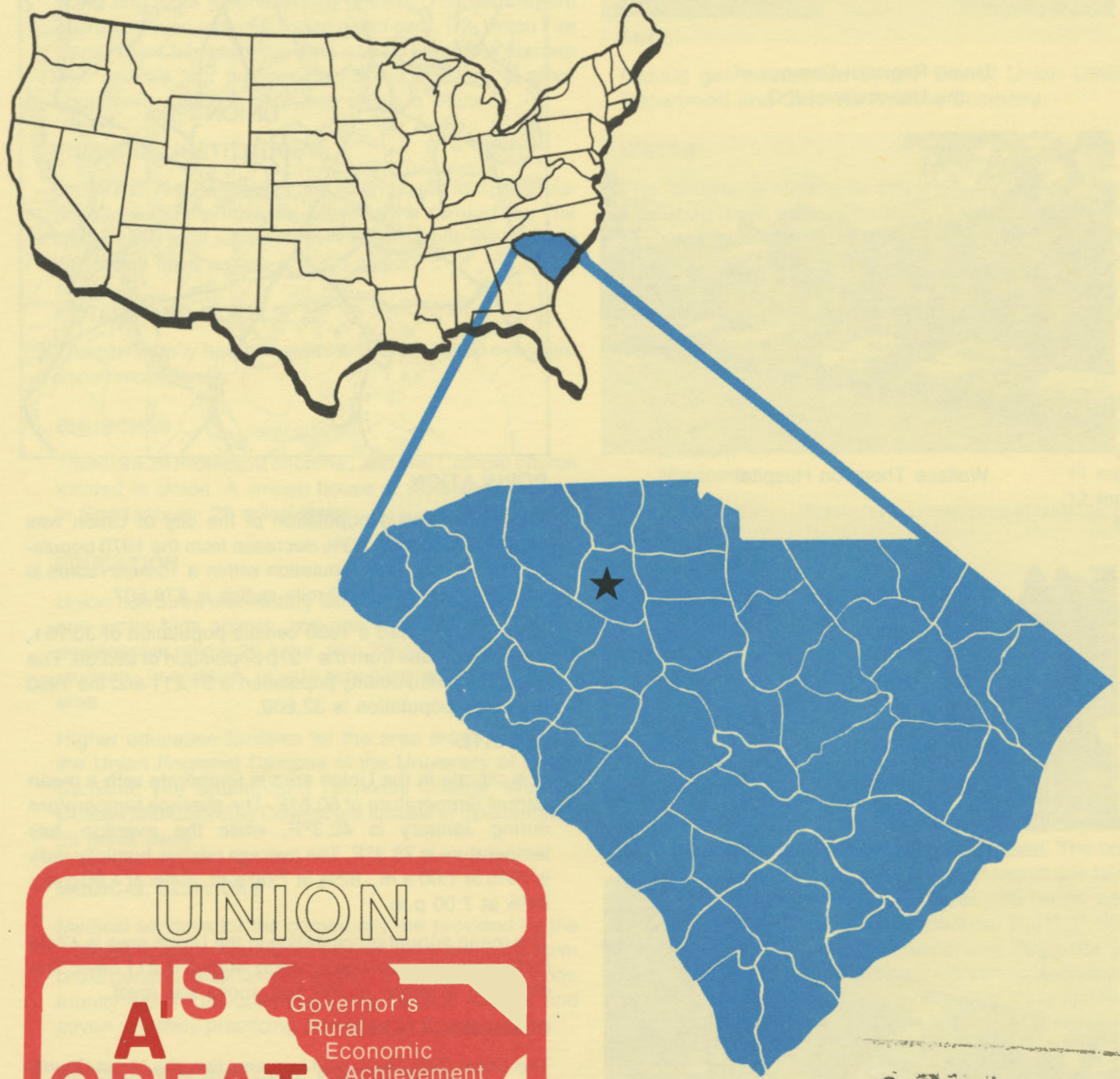


D4925
2.u54
1984
Copy 1

UNION

south carolina



UNION
IS
A GREAT TOWN

Governor's
Rural
Economic
Achievement
Trophy

S. C. STATE LIBRARY
AUG 2 1 1984
STATE DOCUMENTS



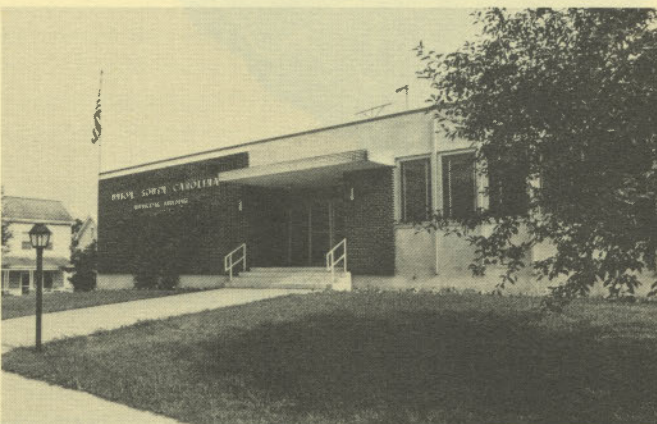
Union Regional Campus of the University of S.C.



Wallace Thomson Hospital



Union County Courthouse



Municipal Building

LOCATION

As depicted on the cover, Union, seat of Union County, is in the northern section of the state. Charleston, South Carolina's busiest port, is 181 miles southeast. Columbia is 68 miles southeast and Greenville is 58 miles west. Union is 197 miles northeast of Atlanta; 673 miles south of New York; and 2,720 miles east of San Francisco.



POPULATION

The 1980 census population of the city of Union was 10,523. This was a 2.3% decrease from the 1970 population of 10,775. The population within a 15-mile radius is 44,698 and within a 30-mile radius is 278,507.

Union County had a 1980 census population of 30,751, a 5.2% increase from the 1970 population of 29,230. The 1983 estimated county population is 31,211 and the 1990 projected population is 32,600.

CLIMATE

The climate in the Union area is temperate with a mean annual temperature of 60.6°F. The average temperature during January is 42.3°F, while the average July temperature is 78.3°F. The average relative humidity daily is 78% at 1:00 a.m.; 82% at 7:00 a.m.; 54% at 1:00 p.m.; 64% at 7:00 p.m.

The mean annual precipitation in the Union area is 47.54 inches and the average growing season is 211 days. The elevation of Union is 600 feet above sea level.

COMMUNICATIONS

The *Union Daily Times* and two weeklies, the *Union County News* and the *Times-Advertiser*, are published in the city. Four large dailies circulate in the community. The city is served by radio station WBCU-AM. Television reception is available from five stations, representing the three major networks and ETV. Cable television is also available. Telephone service is provided by Southern Bell of Bell South Corporation.

GOVERNMENT

The community has a council form of municipal government. The six city council members and the mayor are elected for four-year terms. Union County has a council-supervisor form of government, with the supervisor elected for a four-year term and the six council members serving staggered two-year terms.

POLICE AND FIRE

The Union Police Department has 23 full-time police officers and eight reserve police officers. The department operates seven radio equipped patrol cars. The Union Fire Department has eight full-time and 23 volunteer firemen who operate four pumper trucks and a variety of other equipment. Union's insurance rating is Class 5.

FINANCIAL INSTITUTIONS

Union has two banks and two savings and loan associations to serve the financial needs of the community. The banks have total assets of \$1.4 billion, while the savings and loans have assets of \$203 million.

HOTELS AND MOTELS

The community has one motel with a total of 60 overnight accommodations.

CHURCHES

There are 29 Protestant churches and one Catholic church located in Union. A Jewish house of worship is located in Spartanburg, 28 miles away.

EDUCATION

Union has three elementary schools; one middle school; one junior high school; and one high school. The student/teacher ratio is 20.1 to 1, with 236 teachers and 4,755 students. In addition, private schooling is available in the area.

Higher education facilities for the area are provided by the Union Regional Campus of the University of South Carolina. The Spartanburg Technical College, Wofford College and Converse College are located in Spartanburg, 28 miles away.

MEDICAL SERVICES

Medical services for the community are provided by the 143-bed Wallace Thomson Hospital, an acute-care, non-profit general hospital operated by the county. The community has 11 privately-practicing medical doctors and seven privately-practicing dentists.

RECREATION AND CIVIC FACILITIES

Recreation facilities in the community consist of several fully-equipped parks, playgrounds, lighted ball fields, a skating rink and a bowling alley. Four swimming pools and several tennis courts are in the area. The county has a full-time recreation director. There are two country clubs in Union with golf courses, swimming pools and tennis

courts. The regional campus of USC provides cultural activities with additional facilities available in Spartanburg, 28 miles away.

POWER

Electric power is provided by the City of Union Utilities Department, Lockhart Power Company, South Carolina Electric and Gas Company, and Broad River Electric Co-op. Specific service area is determined for each supplier by the S. C. Public Service Commission.

FUEL

Natural gas is supplied by the City of Union Utilities Department and Carolina Pipeline Company.

WATER

The community obtains its municipal water supply from the Broad River, eight miles away. The system is capable of supplying treated water at a maximum rate of 8.0 million gallons per day, with an average daily demand of 8.0 million gallons. Treated water storage consists of 2.85 million gallons in elevated storage and 1.9 million gallons in ground storage.

Analysis of water supplied in the community:

Total solids	42 mg/L
Alkalinity	12 mg/L
Calcium	3 mg/L
Hardness	11 mg/L
Iron	.12 mg/L
pH	6.3

SEWER

Union uses 3 activated sludge plants to dispose of the community's wastewater. The system is capable of treating 7,350,000 gpd and the average daily load is 2,000,000 gallons.

LABOR

Because labor information may change in this area, a current labor availability report prepared and kept up to date by the S. C. State Development Board will be furnished to prospective manufacturers at their request. The comprehensive report will include sources of recruitable labor, labor force characteristics, work force skill levels, earnings data and other pertinent information. The S. C. State Board for Technical and Comprehensive Education has the resources to recruit and train workers in accordance with a company's entry criteria. This training is at little or no cost to the employer. A lead-time schedule is developed to coordinate recruiting, testing, selecting, and training. This assures that persons will be able to move from training to their respective jobs at the time the plant is ready for initial production.

TRANSPORTATION

Union is served by two interstate highways, I-26 (26 miles away), and I-85 (28 miles away), one United States

highway, and four South Carolina highways. The community is served by two railroads, the Seaboard System and the Southern Railway System. Union has 37 authorized motor carriers, five of which have terminal facilities in nearby Spartanburg.

Freight Delivery Times:

To:	By Rail:	By Truck:
Atlanta	2 days	1 day
Boston	6 days	3 days
Chicago	6 days	3 days
Houston	9 days	4 days
New York	4 days	3 days
St. Louis	5 days	3 days
San Francisco	12 days	5 days

The Greenville-Spartanburg Jetport, 58 miles from the community, offers regularly scheduled commercial airline service on Eastern, Bankair, Sunbird, Atlantic Southeast, Wheeler, Piedmont and U.S. Air. Private aircraft utilize the Union County Airport, three miles away, which has a 3,000-foot lighted and paved runway. Services available at the county airport are charter service, flight instruction, hangars, tiedowns, RBN, 100LL and Jet A fuel, Unicom, Vortac and major airframe and major powerplant repairs.

FOREIGN TRADE ZONE

A Foreign Trade Zone is located in Summerville, South Carolina, 25 miles from the Port of Charleston and 156 miles from the community. The Foreign Trade Zone allows

manufacturers to store, manufacture, or process goods without paying U.S. Customs duties or worrying about quota compliance. This Foreign Trade Zone is served by a multimode transportation network which provides excellent accessibility to market areas.

TAXES

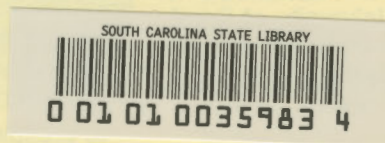
The assessment on industrial property in South Carolina is 10.5% of the market value. New industry is granted a five-year moratorium on general county taxes (with the exception of school taxes). The city tax rate is \$5.50 per \$100 of assessed value. The county rate is \$13.49 per \$100 of assessed value. The effective city tax rate (tax liability per \$100 of market value) is \$.58. The effective county rate is \$1.42. The state has no tax on a manufacturer's inventories, goods-in-process, raw materials or finished goods. Treatment facilities or equipment of manufacturing plants which control water or air pollution are exempt from all property taxation.

INDUSTRIAL SITES

Industrial sites are available in Union with a wide range of geographic and topographic features. In all probability, a site that will meet the needs of most industries' requirements has been identified, catalogued, and entered into the State Development Board's Computerized Site Selection System. Detailed site information is available and will be furnished upon request.

MAJOR EMPLOYERS

Name	Product or Service	Employees
Cone Mills — Carlisle Finishing Co.	Finishing fabric	1,102
Her Majesty Industries, Inc.	Children's sleepwear	273
Milliken and Company (2 plants)	Fabric, finishing fabric	700
Spartan Mills — Rosemont Plant	Corduroy, blended fabrics	159
Torrington Co. (2 plants)	Brass cages, roller bearings	436
Uniblend Spinners — Union Mill	Yarn	481



For Additional Information Contact:
 SOUTH CAROLINA STATE DEVELOPMENT BOARD
 P. O. Box 927, Columbia, South Carolina 29202
 (803) 758-3145