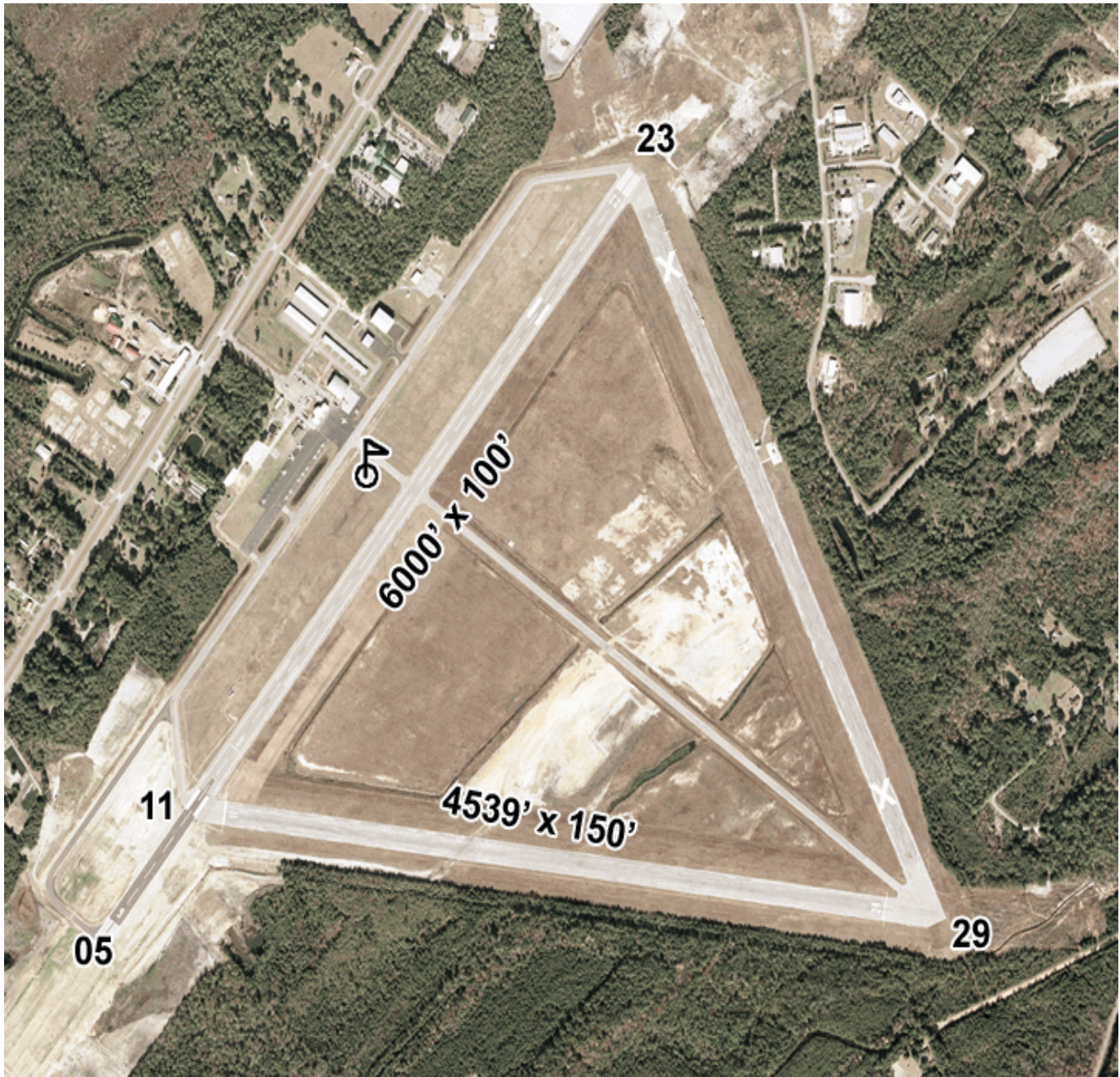




SOUTH CAROLINA AIRPORTS SYSTEM PLAN

GEORGETOWN COUNTY - GGE
GEORGETOWN, SOUTH CAROLINA

Data Cycle 06/21/2013
Photo Date 2008



Governing Body
COMMISSION

Manager RICK WESTFALL
Address 129 AIRPORT RD.
City GEORGETOWN, SC 29440
Phone 843-545-3638
E-mail
Owner GEORGETOWN COUNTY
Address PO BOX 421270
City GEORGETOWN, SC 29442
Phone 843-545-3006





SOUTH CAROLINA AIRPORTS SYSTEM PLAN

Governing Body
COMMISSION

Manager RICK WESTFALL
Address 129 AIRPORT RD.
City GEORGETOWN, SC 29440
Phone 843-545-3638
E-mail
Owner GEORGETOWN COUNTY
Address PO BOX 421270
City GEORGETOWN, SC 29442
Phone 843-545-3006
GEORGETOWN COUNTY - GGE
Airport Classification - SC II



GEORGETOWN, SOUTH CAROLINA



SOUTH CAROLINA AIRPORTS SYSTEM PLAN

State Classification II – Corporate/Business (SC-II): Located in urbanized environment or in a rural location with a multi-jurisdictional service area, the SC Airports System Plan has determined that these airports should have runways that are a minimum of 5,000 feet x 100 feet with Airport Reference Code (ARC) designations of B-II or C-II. The airport's annual economic impact to the state of South Carolina has been quantified within the range of \$2 million to \$222 million as defined in the South Carolina Economic Impact of Aviation (May 2006).¹ These airports offer the full range of fuels and aviation services, instrument approach procedures, and are forecasted to have a growing population of based aircraft and annual operations. The future activity profile consists of between 30% and 50% of corporate and business operations with a smaller number of recreational or private users. The airports are not constrained by surrounding incompatible land uses or environmentally sensitive areas and have expansion capability for not only runways and taxiways but for support facilities such as apron, hangar and terminal facilities. Corporate/Business airports should have LPV approach minima of no higher than 250-3/4.

All minimum airport design standards for Classification II airports shall be based on the FAA Airport Reference Code (ARC) B-II or C-II with the following additions:

- * Shall have an Airport Layout Plan approved by SCAC,
- * Runway length shall be 5,000 feet,
- * Runway width shall be 100 feet,
- * Runway strength shall be 60,000 pounds dual wheel load,
- * Runways shall have unobstructed approaches in accordance with FAA AC 150/5300-13,
- * Airport shall attempt to achieve RNAV (GPS) LPV instrument approach minimums on the primary Runway of 250 feet and $\frac{3}{4}$ mile,
- * Runway to taxiway centerline distance shall be 300 feet,

¹ Wilbur Smith Associates in association with EDR Group and Franks and Associates (May 2006). South Carolina Economic Impact of Aviation. Prepared for The South Carolina Aeronautics Commission.

State Classification II – Corporate/Business (SC-II): Located in urbanized environment or in a rural location with a multi-jurisdictional service area, the SC Airports System Plan has determined that these airports should have runways that are a minimum of 5,000 feet x 100 feet with Airport Reference Code (ARC) designations of B-II or C-II. The airport's annual economic impact to the state of South Carolina has been quantified within the range of \$2 million to \$222 million as defined in the South Carolina Economic Impact of Aviation (May 2006).¹ These airports offer the full range of fuels and aviation services, instrument approach procedures, and are forecasted to have a growing population of based aircraft and annual operations. The future activity profile consists of between 30% and 50% of corporate and business operations with a smaller number of recreational or private users. The airports are not constrained by surrounding incompatible land uses or environmentally sensitive areas and have expansion capability for not only runways and taxiways but for support facilities such as apron, hangar and terminal facilities. Corporate/Business airports should have LPV approach minima of no higher than 250-3/4.

All minimum airport design standards for Classification II airports shall be based on the FAA Airport Reference Code (ARC) B-II or C-II with the following additions:

- * Shall have an Airport Layout Plan approved by SCAC,
- * Runway length shall be 5,000 feet,
- * Runway width shall be 100 feet,
- * Runway strength shall be 60,000 pounds dual wheel load,
- * Runways shall have unobstructed approaches in accordance with FAA AC 150/5300-13,
- * Airport shall attempt to achieve RNAV (GPS) LPV instrument approach minimums on the primary Runway of 250 feet and $\frac{3}{4}$ mile,
- * Runway to taxiway centerline distance shall be 300 feet,

¹ Wilbur Smith Associates in association with EDR Group and Franks and Associates (May 2006). South Carolina Economic Impact of Aviation. Prepared for The South Carolina Aeronautics Commission.



SOUTH CAROLINA AIRPORTS SYSTEM PLAN

State Classification II – Corporate/Business (SC-II): Located in urbanized environment or in a rural location with a multi-jurisdictional service area, the SC Airports System Plan has determined that these airports should have runways that are a minimum of 5,000 feet x 100 feet with Airport Reference Code (ARC) designations of B-II or C-II. The airport's annual economic impact to the state of South Carolina has been quantified within the range of \$2 million to \$222 million as defined in the South Carolina Economic Impact of Aviation (May 2006).¹ These airports offer the full range of fuels and aviation services, instrument approach procedures, and are forecasted to have a growing population of based aircraft and annual operations. The future activity profile consists of between 30% and 50% of corporate and business operations with a smaller number of recreational or private users. The airports are not constrained by surrounding incompatible land uses or environmentally sensitive areas and have expansion capability for not only runways and taxiways but for support facilities such as apron, hangar and terminal facilities. Corporate/Business airports should have LPV approach minima of no higher than 250-3/4.

All minimum airport design standards for Classification II airports shall be based on the FAA Airport Reference Code (ARC) B-II or C-II with the following additions:

- * Shall have an Airport Layout Plan approved by SCAC,
- * Runway length shall be 5,000 feet,
- * Runway width shall be 100 feet,
- * Runway strength shall be 60,000 pounds dual wheel load,
- * Runways shall have unobstructed approaches in accordance with FAA AC 150/5300-13,
- * Airport shall attempt to achieve RNAV (GPS) LPV instrument approach minimums on the primary Runway of 250 feet and $\frac{3}{4}$ mile,
- * Runway to taxiway centerline distance shall be 300 feet,

¹ Wilbur Smith Associates in association with EDR Group and Franks and Associates (May 2006). South Carolina Economic Impact of Aviation. Prepared for The South Carolina Aeronautics Commission.

State Classification II – Corporate/Business (SC-II): Located in urbanized environment or in a rural location with a multi-jurisdictional service area, the SC Airports System Plan has determined that these airports should have runways that are a minimum of 5,000 feet x 100 feet with Airport Reference Code (ARC) designations of B-II or C-II. The airport's annual economic impact to the state of South Carolina has been quantified within the range of \$2 million to \$222 million as defined in the South Carolina Economic Impact of Aviation (May 2006).¹ These airports offer the full range of fuels and aviation services, instrument approach procedures, and are forecasted to have a growing population of based aircraft and annual operations. The future activity profile consists of between 30% and 50% of corporate and business operations with a smaller number of recreational or private users. The airports are not constrained by surrounding incompatible land uses or environmentally sensitive areas and have expansion capability for not only runways and taxiways but for support facilities such as apron, hangar and terminal facilities. Corporate/Business airports should have LPV approach minima of no higher than 250-3/4.

All minimum airport design standards for Classification II airports shall be based on the FAA Airport Reference Code (ARC) B-II or C-II with the following additions:

- * Shall have an Airport Layout Plan approved by SCAC,
- * Runway length shall be 5,000 feet,
- * Runway width shall be 100 feet,
- * Runway strength shall be 60,000 pounds dual wheel load,
- * Runways shall have unobstructed approaches in accordance with FAA AC 150/5300-13,
- * Airport shall attempt to achieve RNAV (GPS) LPV instrument approach minimums on the primary Runway of 250 feet and $\frac{3}{4}$ mile,
- * Runway to taxiway centerline distance shall be 300 feet,

¹ Wilbur Smith Associates in association with EDR Group and Franks and Associates (May 2006). South Carolina Economic Impact of Aviation. Prepared for The South Carolina Aeronautics Commission.



SOUTH CAROLINA AIRPORTS SYSTEM PLAN

GEORGETOWN COUNTY - GGE

GEORGETOWN, SOUTH CAROLINA

Base Aircraft for 2012		Annual IFR Flight for 2012		Piston	Turbine
Single Engine	2	1,768	Single Engine	1,378	390
Multi Engines	500	1,230	Multi Engines	684	546
Helicopter	0	1	Helicopter	0	1
Jet	0	820	Jet		
Military	0	2	Unknown		
Base Totals	502	3,821	IFR Totals		

[Hyper Link to IFR details](#)

Single Engine	2	1,768	Single Engine	1,378	390
Multi Engines	500	1,230	Multi Engines	684	546
Helicopter	0	1	Helicopter	0	1
Jet	0	820	Jet		
Military	0	2	Unknown		
Base Totals	502	3,821	IFR Totals		

[Hyper Link to IFR details](#)



SOUTH CAROLINA AIRPORTS SYSTEM PLAN

GEORGETOWN COUNTY - GGE

GEORGETOWN, SOUTH CAROLINA

Airport Profile

Elevation	40.00' MSL	Latitude:	33-18-41.0465N
Lighting Schedule	DUSK-DAWN	Longitude:	079-19-13.1301W
Magnetic Var	06°W		

Runway Information

ID	Length	Width	Surface	VGIS	REILS	Edge Lights	Approach Lights	Traffic Pattern
05/23	6000	100	ASPH-G	P2L/P2L	None	MED	None	Standard
11/29	4539	150	ASPH-P	None	None	MED	None	Standard
05/23	6000	100	ASPH-G	P2L/P2L	None	MED	None	Standard
11/29	4539	150	ASPH-P	None	None	MED	None	Standard

Gross Wheel Weight

ID	SW	DW	DTW	DDTW	Surface
05/23	40	60			ASPH-G
11/29	20.0	30.0			ASPH-P
05/23	40	60			ASPH-G
11/29	20.0	30.0			ASPH-P

NAVAIDS

ID	Type	FREQ	Direct/Distant
CHS	VORTAC	113.50	r60° 44 NM to fld
GGE	NDB	242	at fld

Communications

		RCO	ATIS	ATC		WEATHER	
UNICOM	CTAF	FREQ	FREQ	FREQ	ID	FREQ	PHONE
123.000	123.000			127.4	MYR	118.725	(843) 527-3851

[Hyperlink to airport drawing diagram](#)

[Hyperlink to airport economic impact](#)



SOUTH CAROLINA AIRPORTS SYSTEM PLAN

Capital Improvement Program

Project Description	Project Cost	Federal Share	Non-Primary Entitlements	Discretionary	State	Local
2013						
Parallel Taxiway Rehabilitation (Construction)	\$1,784,000	90%	\$1,605,600	\$150,000	\$1,455,600	\$89,200 5%
Totals for 2013	\$1,784,000		\$1,605,600	\$150,000	\$1,455,600	\$89,200
2014						
Drainage System Analysis and Evaluation	\$45,000	90%	\$40,500	\$0	\$40,500	\$2,250 5%
Hangar Taxiways	\$464,000	90%	\$417,600	\$0	\$417,600	\$23,200 5%
10-Unit T-Hangar	\$741,000	20.2%	\$150,000	\$150,000	\$0	\$591,000 79.7%
10-Unit T-Hangar	\$741,000	20.2%	\$150,000	\$150,000	\$0	\$591,000 79.7%
Totals for 2014	\$1,991,000		\$758,100	\$300,000	\$458,100	\$25,450
2015						
1st Reimbursement: 10-Unit T-Hangar	\$150,000	100%	\$150,000	\$150,000	\$0	\$0 0%
1st Reimbursement: 10-Unit T-Hangar	\$150,000	100%	\$150,000	\$150,000	\$0	\$0 0%
Apron Expansion (Phase III)	\$454,000	90%	\$408,600	\$0	\$408,600	\$22,700 5%
Apron Expansion (Phase III)	\$464,000	88%	\$408,600	\$0	\$408,600	\$27,700 5.9%
Totals for 2015	\$1,218,000		\$1,117,200	\$300,000	\$817,200	\$50,400
2016						
Land Acquisition for Runway 5 PIR	\$693,000	90%	\$623,700	\$0	\$623,700	\$34,650 5%
2nd Reimbursement: 10-Unit T-Hangar	\$150,000	100%	\$150,000	\$150,000	\$0	\$0 0%
Install Localizer	\$1,000,000	90%	\$900,000	\$0	\$900,000	\$50,000 5%
ALD Update	\$90,000	90%	\$81,000	\$0	\$81,000	\$4,500 5%
2nd Reimbursement: 10-Unit T-Hangar	\$150,000	100%	\$150,000	\$150,000	\$0	\$0 0%
Apron Expansion (Phase IV)	\$499,000	90%	\$449,100	\$0	\$449,100	\$24,950 5%
Totals for 2016	\$2,582,000		\$2,353,800	\$300,000	\$2,053,800	\$114,100
2017						
3rd Reimbursement: 10-Unit T-Hangar	\$150,000	100%	\$150,000	\$150,000	\$0	\$0 0%
3rd Reimbursement: 10-Unit T-Hangar	\$150,000	100%	\$150,000	\$150,000	\$0	\$0 0%
Obstruction Removal for Runway 5 PIR	\$859,000	90%	\$773,100	\$0	\$773,100	\$42,950 5%
Totals for 2017	\$1,159,000		\$1,073,100	\$300,000	\$773,100	\$42,950
2018						
5-Unit Executive Hangar	\$577,000	14.4%	\$83,100	\$83,100	\$0	\$493,900 85.6%
Glide Slope Installation	\$800,000	90%	\$720,000	\$0	\$720,000	\$40,000 5%
4th Reimbursement: 10-Unit T-Hangar	\$66,900	100%	\$66,900	\$66,900	\$0	\$0 0%
4th Reimbursement: 10-Unit T-Hangar	\$66,900	100%	\$66,900	\$66,900	\$0	\$0 0%
MALSR Installation	\$800,000	90%	\$720,000	\$0	\$720,000	\$40,000 5%
Totals for 2018	\$2,310,800		\$1,656,900	\$216,900	\$1,440,000	\$80,000



SOUTH CAROLINA AIRPORTS SYSTEM PLAN

Demographic and Business Profile Report

(Data provided for 20 Mile Drive Distance from Airport)

Total Population and Growth Rate

2000 Total Population	36,182
2008 Total Population	41,290
2013 Total Population	44,440
2000-2008 Annual Growth Rate	1.6%
2008-2013 Annual Growth Rate	1.5%

Per Capita Income

2000 Per Capita Income	\$19,690
2008 Per Capita Income	\$26,108
2013 Per Capita Income	\$30,777

Total Households

2000 Total Households	13,858
2008 Total Households	16,588
2013 Total Households	18,096

Median Household Income

2000 Median HH Income	\$35,464
2008 Median HH Income	\$44,987
2013 Median HH Income	\$52,631

Median Age

2000 Median Age	38.6
2008 Median Age	41.1
2013 Median Age	42.7

2008 Population by Age

Population 0 - 14	19.5%
Population 15 - 24	11.8%
Population 25 - 54	39.0%
Population 55 +	27.8%
Population 18+	76.3%
Population 85+	1.8%

2008 Civilian Population 16+ by Employment Status

Employed Civilian Pop 16+	16,656
Unemployed Civilian Pop 16+	1,486
Employment Rate	91.8%
Unemployment Rate	8.2%

2008 Employed Civilian Population by Industry

Agriculture/Mining	2.6%
Construction	9.4%
Manufacturing	14.2%
Retail/Wholesale Trade	13.7%
Transportation/Utilities	3.7%
Information	0.8%
Finance/Insurance/Real Estate	6.7%
Professional/Technical	3.7%
Management	0.0%
Accom/Food/Other Services	13.8%
Educational Services	8.6%
Health Care/Social Assistance	11.1%
Public Administration	3.9%
Admin/Support/Waste Svcs.	4.7%
Arts/Entertainment	3.1%

2008 Educational Attainment by Degree

<9th Grade	7.4%
Some High School	12.1%
High School Graduate	31.3%
Some College	19.3%
Associate Degree	6.8%
Bachelor's Degree	15.6%
Graduate/Professional Degree	7.6%

2008 Employed Civilian Population by Occupation

Management (incl. Farm Mgr.)	7.7%
Professional	11.4%
Sales	11.2%
Office/Administrative Support	10.6%
Life/Physical/Soc. Science/Soc. Svcs.	2.3%
Entertainment/Sports	1.0%
Health Care Pract/Support	9.2%
Protective Services	2.4%
Food Preparation/Serving	6.5%
Maintenance/Installation/Repair	12.5%
Construction/Extraction Services	8.2%
Production	8.8%
Transportation/Moving	6.5%
Farming/Fishing/Forestry	1.6%

Top Businesses by Number of Employees within 20 Mile Drive Distance.

Company Name	Number of Employees
Georgetown Hospital System	900
Wal-Mart Supercenter	380
3 V Chemical Corp	230
Csx	200
Georgetown Greenhouses Inc	140
Pawleys Plantation Golf	132
International Paper Co	130
Keller Williams Realty	119
Intl Paper Sampit Lumber Mill	101
Food Lion	87
R C Jacobs Plumbing Heating	85
Piggly Wiggly	85
Century 21	80
Screen Tight	75
Waccamaw Management Co Llc	75
Food Lion	60
S Carlonia Dept-Transportation	58
H & S Oil Co	55
Myrtle Beach Communications	55
Coastal Nissan Inc	55
Coastal Chevrolet-Cadillac	55
Piggly Wiggly	50
B E & K Construction Co	50
Agru America	50
Low Country Forest Products	50
Parsons Nursery Llc	45
Andrews Wire Co	38
L & L Contractors Inc	38
Coastal Wire Co	38
Georgetown County Public Works	35
Georgetown Street Dept	35
Singleton Construction Co	35
Tidelands Ford Lincoln Mercury	32
Peddinghaus Corp	30
Stone'S Construction Co	30

Source: ESRI, 2008 Estimates and Projections, 2000 Census, 2008 InfoUSA Business Data



SOUTH CAROLINA AIRPORTS SYSTEM PLAN

20 Mile Drive Distance Map

