

Sumter County Base Labor Market Analysis



South Carolina
Department of
Commerce
Labor Market Information



August 2009

TABLE OF CONTENTS

EXECUTIVE SUMMARY	5
POPULATION	6
Growth	6
LABORSHED	7
Characteristics of Workers	7
INCOME	9
Per Capita Income	9
Wages by Industry	10
Wages by Occupation	11
EDUCATION	12
High School Graduates	12
Higher Education Graduates	13
OCCUPATIONS	15
Occupational Projections	15
Occupational Education Requirements	16
INDUSTRY	17
Businesses by Sector	17
Growth in Number of Businesses	18
Employment by Sector	19
Industry Analysis	20
MOVING FORWARD	22
Appendix A: Occupational Projections	
Appendix B: Businesses by 3-digit NAICS Codes	
Appendix C: Employment by Industry Sector	

EXECUTIVE SUMMARY

Population

Sumter County's population has decreased in recent years.

Future growth is expected to be slower than the state's.

Two thirds of Sumter County's workers live within the county.

Income

Per capita income growth has been faster than the state and the nation.

But, Sumter County's per capita income remains below the state level.

Sumter County's average wages are higher than the state's in the following major occupational groups: Business and financial operations, community and social services, and healthcare practitioners and technical.

Education

The number of degrees awarded by area post-secondary institutions has increased.

The greatest increase has been in the area of business management.

Occupations

The production occupational group is expected to have faster growth in Sumter County than in the state.

Requirements for Sumter County's workers are expected to grow in the following levels of education and experience:

Work experience in a related field, postsecondary vocational award, associate's degree, bachelor's degree, and master's degree or higher.

Industry

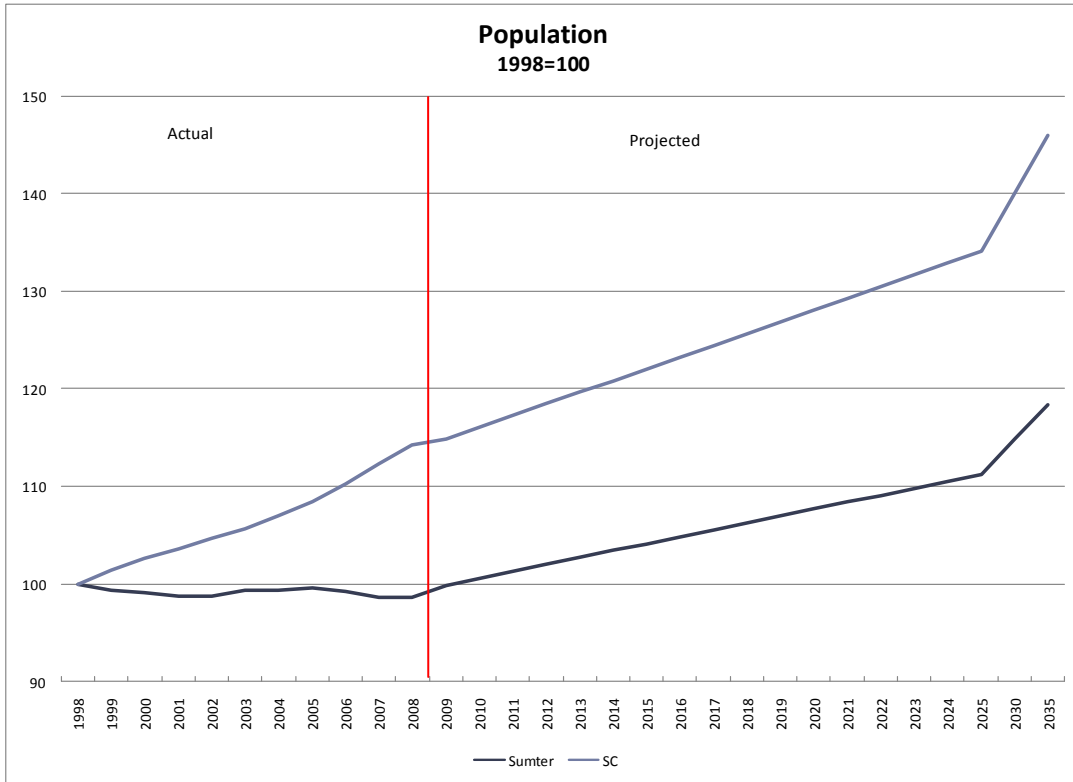
Sectors rated as having high potential in Sumter County are as follows:

Building construction, truck transportation, heavy and civil engineering construction, machinery manufacturing, merchant wholesalers, ambulatory health care services, and fabricated metal product manufacturing.

POPULATION

Growth

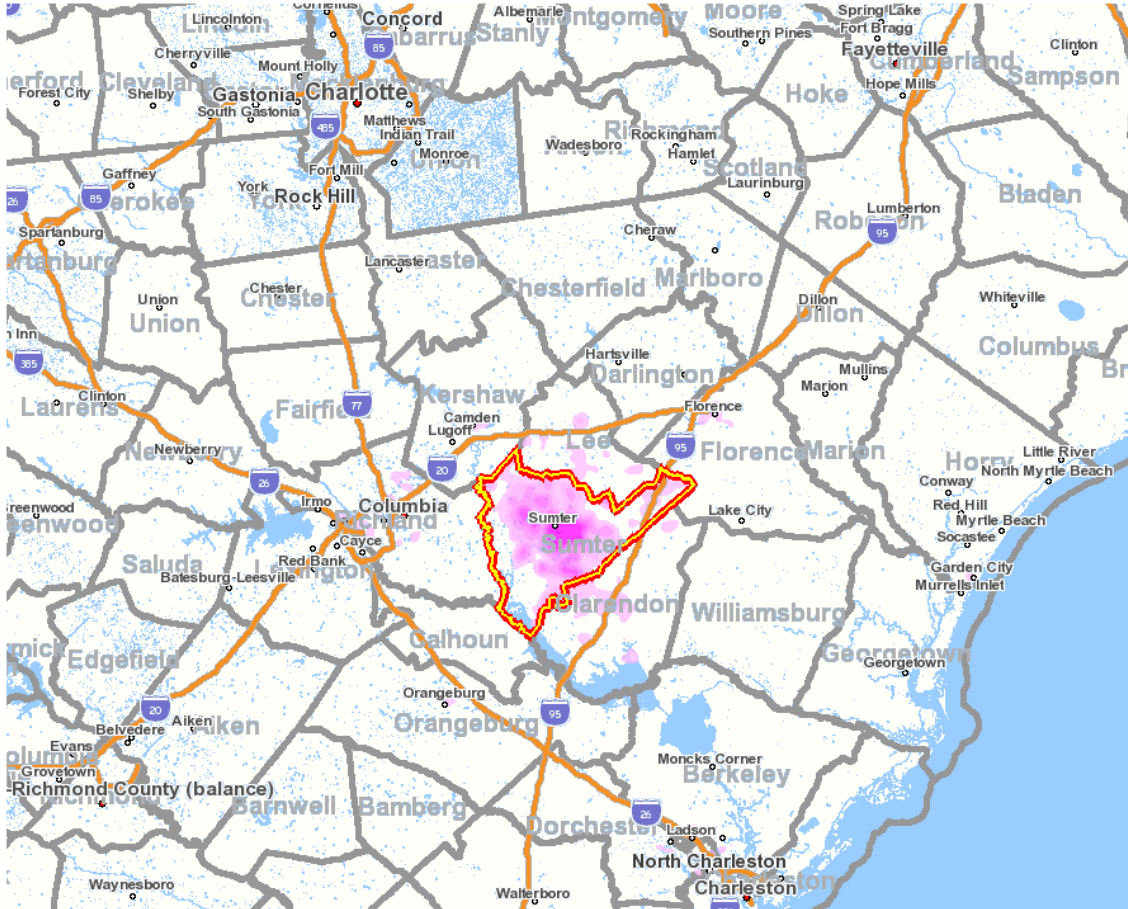
Sumter County's 2008 population was 104,148. The county population has fallen by 1.3% since 1998, compared to 14.3% growth for South Carolina. Sumter's future population growth is expected to be slower than the state's.



Source: U.S. Census Bureau (estimates) and SC Budget & Control Board/Office of Research and Statistics (projections).

LABORSHED

The map below shows where Sumter County workers come from (in 2006, latest available data). As can be seen, two thirds of Sumter County's workers live within the county.



Source: U.S. Census Bureau, Local Employment Dynamics.

Characteristics of Workers

<u>Age of Workers:</u>		<u>Earnings of Workers:</u>	
30 or younger	25.7%	\$1,200 per month or less	32.0%
31 to 54	57.3%	\$1,201 to \$3,400 per month	47.5%
55 or older	17.0%	More than \$3,400 per month	20.5%

States Where Workers Live:

South Carolina	98.9%
North Carolina	0.5%
All other locations	0.6%

Counties Where Workers Live:

Sumter	66.3%
Clarendon	4.2%
Richland	3.9%
Lee	2.5%
Florence	2.1%
Horry	1.9%
Charleston	1.8%
Kershaw	1.7%
Lexington	1.5%
Orangeburg	1.3%
All Other Locations	12.8%

Cities Where Workers Live:

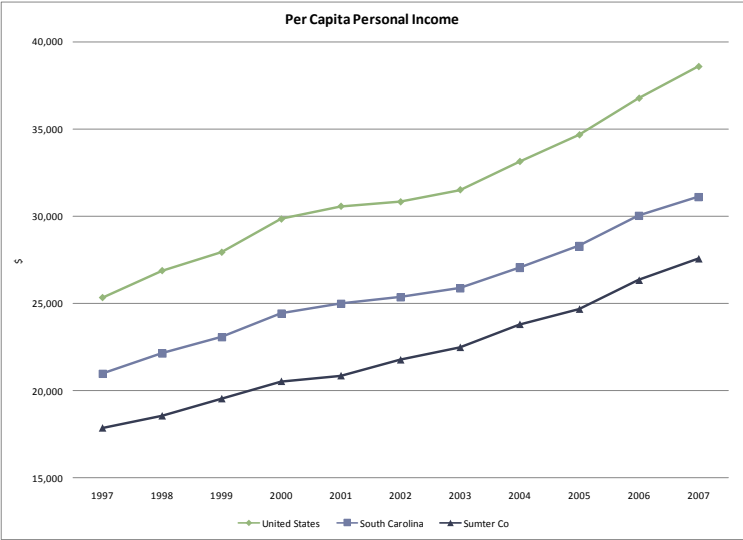
Sumter, SC	26.1%
South Sumter, SC	2.1%
Lakewood, SC	2.0%
Dalzell, SC	1.5%
Privateer, SC	1.3%
Cherryvale, SC	1.3%
Wedgewood, SC	1.0%
East Sumter, SC	1.0%
Columbia, SC	0.9%
Cane Savannah, SC	0.9%
All Other Locations	61.8%

Source: U.S. Census Bureau, Local Employment Dynamics.

INCOME

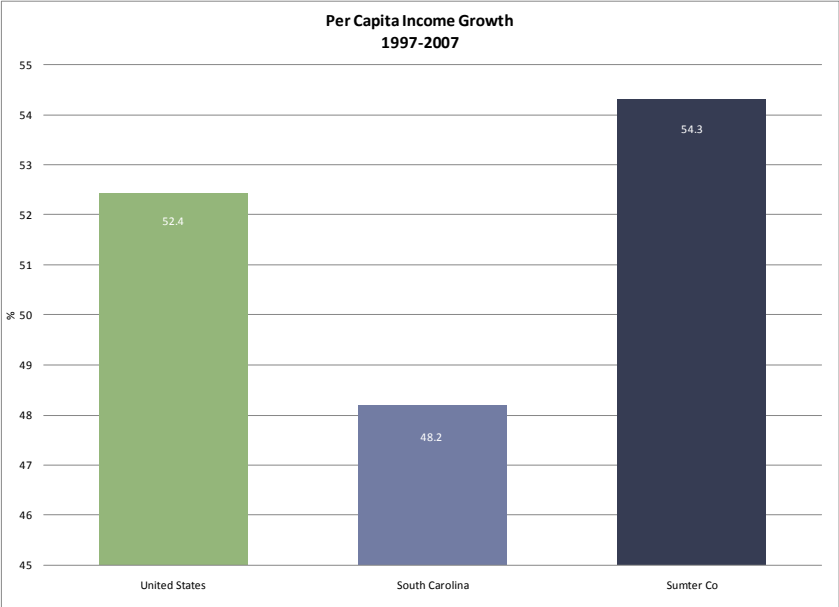
Per Capita Income

Sumter County's per capita income has remained below the state and national levels.



Source: U.S. Department of Commerce, Bureau of Economic Analysis.

Sumter County's per capita income has grown faster than South Carolina's and the nation's.



Source: U.S. Department of Commerce, Bureau of Economic Analysis.

Wages by Industry

Sumter County's average wages are below those of South Carolina (\$593 vs. \$697 in 2008). Average wages were up 19% in Sumter County over the past five years, compared to 18% for the state. All major sectors had growth, led by transportation and warehousing.

Industry	NAICS Code	2008 Average Weekly Wage (\$)	2003 Average Weekly Wage (\$)	% Change
Total, Private and Government		593	498	19
Construction	23	744	574	30
Manufacturing	31-33	681	564	21
Retail Trade	44-45	408	354	15
Transportation and Warehousing	48-49	694	529	31
Information	51	726	557	30
Finance and Insurance	52	730	641	14
Real Estate and Rental and Leasing	53	442	377	17
Administration & Support & Waste Management & Remediation Services	56	405	341	19
Health Care & Social Assistance	62	693	582	19
Arts, Entertainment, and Recreation	71	230	185	24
Accommodation and Food Services	72	221	196	13
Other Services (Except Public Administration)	81	437	386	13
Federal Government		751	651	15
State Government		655	584	12
Local Government		605	518	17

Source: U.S. Department of Labor, Bureau of Labor Statistics, Quarterly Census of Employment and Wages.

Wages by Occupation

Average wages in Sumter County are higher than the state average in the following occupational groups:

- Business and financial operations
- Community and social services
- Healthcare practitioners and technical

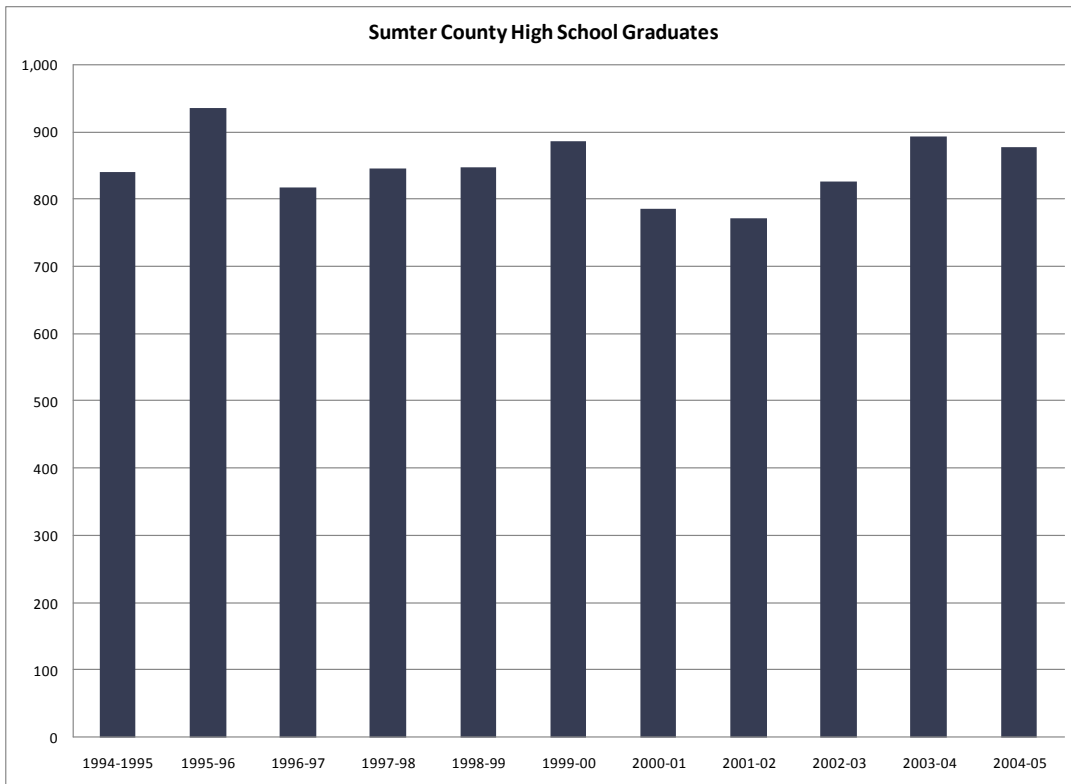
Occupation	2009 Sumter County Median Hourly Wage (\$)	2009 SC Median Hourly Wage (\$)
Management occupations	19.70	23.49
Business and financial operations occupations	19.81	19.14
Computer and mathematical science occupations	23.97	25.83
Architecture and engineering occupations	25.64	28.98
Life, physical and social science occupations	18.21	21.12
Community and social services occupations	13.35	12.94
Legal occupations	19.63	25.39
Education, training and library occupations	21.99	22.66
Arts, design, entertainment, sports and media occupations	9.33	12.27
Healthcare practitioners and technical occupations	29.73	28.56
Healthcare support occupations	9.19	10.74
Protective service occupations	13.44	14.37
Food preparation and serving related occupations	7.87	8.18
Building and grounds cleaning and maintenance occupations	7.88	8.75
Personal care and service occupations	7.17	8.41
Sales and related occupations	9.23	11.00
Office and administrative support occupations	11.71	13.06
Farming, fishing, and forestry occupations	10.64	10.85
Construction and extraction occupations	12.46	14.10
Installation, maintenance and repair occupations	15.61	16.19
Production occupations	13.33	14.75
Transportation and material moving occupations	11.62	12.65

Source: Economic Modeling Specialists, Inc.

EDUCATION

High School Graduates

From 1995 to 2005 (latest data available), the number of Sumter County students receiving high school diplomas rose by 38 (4%). In South Carolina, the number of high school diplomas increased 9% from 1995 to 2005. A total of 879 people received high school diplomas in Sumter County in 2005. Sumter County had 28 fewer 12th grade students in 2004-05 than in 1994-95. The number of Sumter County students not passing the exit exam who received a certificate of completion instead of a diploma increased by 77 (to 97) over the 1995-2005 period.




Source: National Center for Education Statistics.

Higher Education Graduates

Over 1,400 more students graduated from higher educational institutions in the Santee-Lynches area in 2007 than in 1997, an increase of 14%. The greatest numerical increase was in business management fields.

Program	1997	2007	Change	% Change
Agriculture, agriculture operations, and related sciences	16	-	-	-
Area, ethnic, cultural, and gender studies	10	25	15	150
Biological and biomedical sciences	462	481	19	4
Business, management, marketing, and related support services	1,614	2,192	578	36
Communication, journalism, and related programs	239	468	229	96
Computer and information sciences and support services	147	202	55	37
Construction trades	4	10	6	150
Education	1,284	1,262	-22	-2
Engineering technologies/technicians	154	163	9	6
Engineering	294	319	25	9
English language and literature/letters	285	233	-52	-18
Family and consumer sciences/human sciences	122	310	188	154
Foreign languages, literatures, and linguistics	83	70	-13	-16
Health professions and related clinical sciences	1,260	1,389	129	10
Social sciences and history	675	780	105	16
Legal professions and studies	308	303	-5	-2
Liberal arts and sciences, general studies and humanities	675	425	-250	-37
Library science	192	183	-9	-5
Mathematics and statistics	120	115	-5	-4
Mechanic and repair technologies/technicians	113	201	88	78
Multi/interdisciplinary studies	44	87	43	98
Natural resources and conservation	22	10	-12	-55
Parks, recreation, leisure, and fitness studies	164	288	124	76
Personal and culinary services	7	37	30	429
Philosophy and religious studies	32	57	25	78
Physical sciences	172	134	-38	-22
Precision production	88	117	29	33
Psychology	398	416	18	5
Public administration and social service professions	367	379	12	3
Science technologies/technicians	4	-	-	-
Security and protective services	368	380	12	3
Theology and religious vocations	312	310	-2	-1
Visual and performing arts	224	355	131	58
TOTAL	10,259	11,701	1,442	14

Source: National Center for Education Statistics (Integrated Post Secondary Education System).



Data for these schools: Allen University, Benedict College, Central Carolina Technical College, Claflin University, Coker College, Columbia College, Columbia International University, Florence-Darlington Technical College, Francis Marion University, Lutheran Theological Seminary, McLeod Regional Medical Center School of Medical Technology, Morris College, Northeastern Technical College, Orangeburg-Calhoun Technical College, South Carolina State University, South University, Southern Methodist College, University of South Carolina-Columbia, University of South Carolina-Lancaster, University of South Carolina-Sumter, Williamsburg Technical College.

OCCUPATIONS

Occupational Projections

The production occupational group is projected to grow faster in Sumter County than in the state.

See **Appendix A** for detailed occupational information.

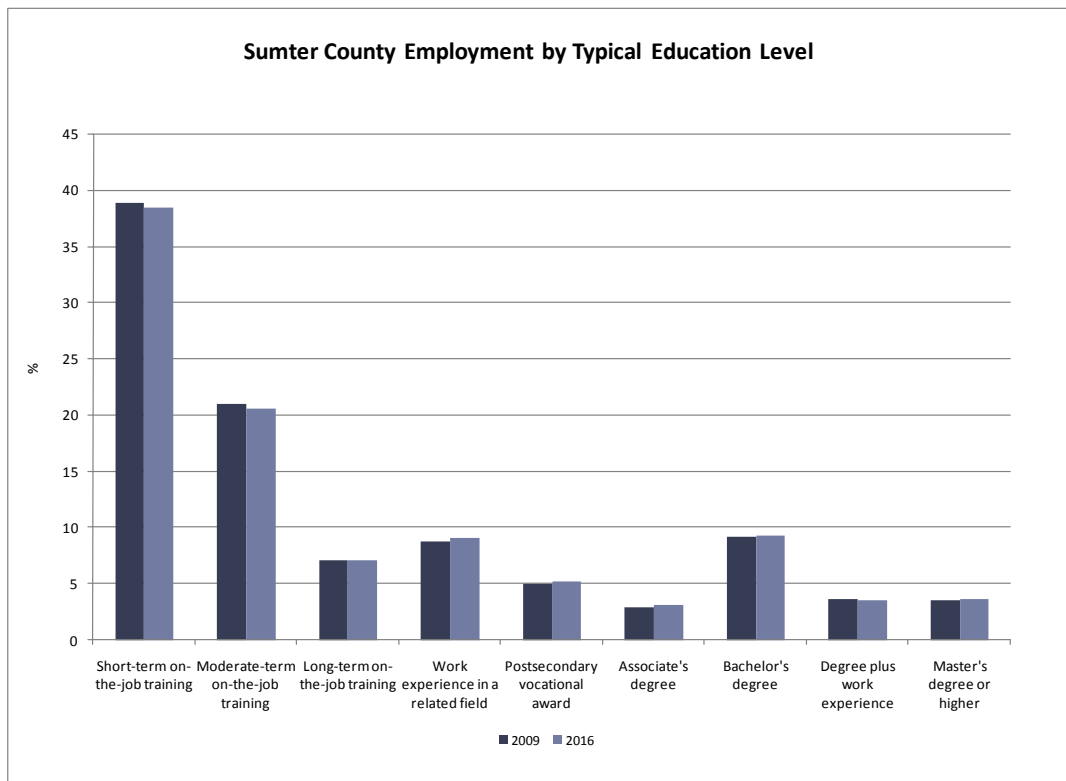
Occupation	2009-2016 Sumter County Projected Growth (%)	2009-2016 SC Projected Growth (%)
Management occupations	9	13
Business and financial operations occupations	9	15
Computer and mathematical science occupations	14	15
Architecture and engineering occupations	6	11
Life, physical and social science occupations	8	10
Community and social services occupations	6	9
Legal occupations	3	17
Education, training and library occupations	0	10
Arts, design, entertainment, sports and media occupations	2	13
Healthcare practitioners and technical occupations	12	17
Healthcare support occupations	16	20
Protective service occupations	9	10
Food preparation and serving related occupations	9	9
Building and grounds cleaning and maintenance occupations	17	18
Personal care and service occupations	0	6
Sales and related occupations	8	16
Office and administrative support occupations	1	8
Farming, fishing and forestry occupations	0	6
Construction and extraction occupations	11	12
Installation, maintenance and repair occupations	5	12
Production occupations	7	-1
Transportation and material moving occupations	0	7

Source: *Economic Modeling Specialists, Inc.*

Occupational Education Requirements

The trend for occupational growth shows that there will be growth in jobs across skill levels. Based on employment projections, Sumter County is expected to see growth in requirements for the following specific levels of education and experience:

- Work experience in a related field
- Postsecondary vocational award
- Associate's degree
- Bachelor's degree
- Master's degree or higher



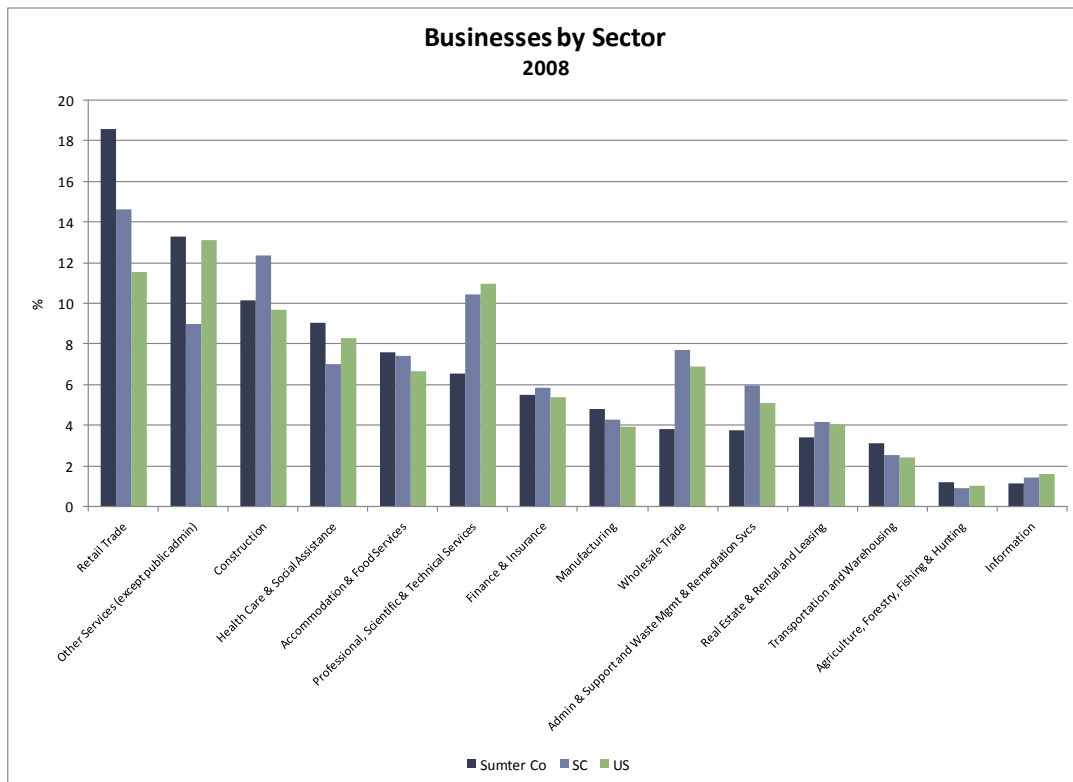
Source: Economic Modeling Specialists, Inc

INDUSTRY

Businesses by Sector

Sumter County had higher percentages of businesses than South Carolina and the nation in the following sectors:

- Retail trade
- Other services
- Health care and social assistance
- Accommodation and food services
- Manufacturing
- Transportation and warehousing
- Agriculture and forestry



Source: U.S. Department of Labor, Bureau of Labor Statistics.

Growth in Number of Businesses

The number of private businesses in Sumter County fell by 1% from 2003 to 2008, compared to a 3% increase for the state. For industry definitions, this analysis uses the North American Industry Classification System (NAICS), the U.S. standard for industry classification.

At the three-digit NAICS code level, Sumter County had higher growth in 10 industries compared to South Carolina and the U.S. Below is a list of those 10 industries along with their respective growth rates.

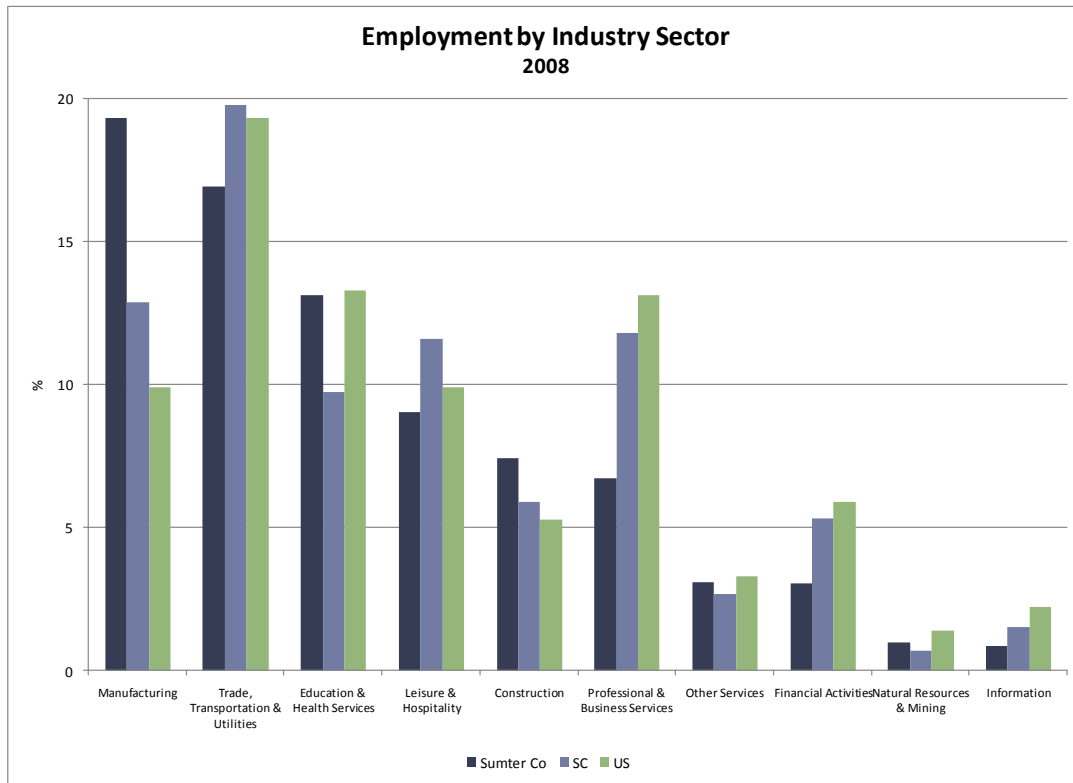
See **Appendix B** for information on all industries.

Industry	2003-2008 Growth (%)		
	Sumter Co.	SC	US
Utilities	66.7	4.0	0.5
Heavy and Civil Engineering Construction	4.5	4.2	-0.5
Machinery Manufacturing	33.3	-6.8	-8.0
Merchant Wholesalers, Durable Goods	19.5	-5.9	-3.6
Health and Personal Care Stores	30.8	16.3	19.9
Truck Transportation	39.3	-1.6	5.2
Support Activities for Transportation	14.3	3.4	9.9
Accommodation	13.3	0.1	4.9
Religious, Grantmaking, Civic, Professional, and Similar Organizations	29.4	18.3	4.1
Private Households	64.2	21.2	22.1

Source: U.S. Department of Labor, Bureau of Labor Statistics.

Employment by Sector

Compared to the state and nation, Sumter County has a higher share of jobs in manufacturing and construction. Manufacturing is the county's largest employment sector.



Source: U.S. Department of Labor, Bureau of Labor Statistics.

Industry Analysis

Screening Criteria

Industry sectors were rated on six factors:

- 2003-2008 employment growth Competitive effect¹
- 2003-2008 employment growth rate Average annual wage
- Location quotient² Projected growth

Using those factors, sectors were awarded “stars” based on meeting the following criteria:

- 2003-2008 employment growth of 75 or more (Did the sector add a significant number of jobs?)
- 2003-2008 employment growth rate greater than 0% (the county lost jobs over the period) (Did the sector add jobs?)
- Location quotient of at least 1.25 (Does the sector have a significant concentration in the county?)
- Competitive effect greater than 0 (Did the sector add jobs beyond national growth overall and in the sector?)
- Average annual wage greater than \$30,851 (2008 average for the county) (Does the sector pay wages greater than average for the county?)
- Average or above average projected growth (Is the sector expected to add jobs?)

Industries of Note

Based on these criteria, Sumter County has the following “six star” sectors:

- Building construction
- Truck transportation

Industry sectors that generate wealth from outside the area are referred to as the region’s base economy. Base economy sectors are important to an area’s economic well-being. Both of the above sectors are considered base economy sectors.

The following are “five star” sectors in the county:

- Heavy and civil engineering construction (below-average growth projected)
- Machinery manufacturing (location quotient below 1.25)
- Merchant wholesalers, durable goods (location quotient below 1.25)
- Ambulatory Health Care Services (location quotient below 1.25)

¹ *Competitive Effect: based on shift-share analysis; represents the change in employment in the sector in the county after accounting for overall US employment growth and growth/decline in the sector in the US.*

² *Location Quotient: percentage of employment in the sector in the county divided by the percentage of employment in that sector in the US; gives an indication of how concentrated employment in the sector is in the county compared to the US; based on 2008 data.*

- Repair and maintenance (growth of less than 75 jobs)

Heavy and civil engineering construction, machinery manufacturing and merchant wholesalers meet the base economy criteria. Ambulatory health care services may be a base economy sector for Sumter County to the extent the county serves as a regional health care provider.

Another sector which fits this base economy criteria, has above-average wages, has a high concentration in the area (as indicated by the location quotient), and is projected to grow is fabricated metal product manufacturing.

Appendix C has information on all factors for all sectors for Sumter County.

MOVING FORWARD

The South Carolina Department of Commerce appreciates the opportunity to provide this base analysis of Sumter County's labor market. We hope that it will help in advancing the progress of Sumter County's economic development.

What's been done so far?

This analysis identifies the region's assets—both current and future—at a macro level. Labor Market Information (LMI) at the S.C. Department of Commerce developed a Base Labor Analysis report providing an overview of the region's population, industries, occupations, and educational assets. Additionally, these findings were benchmarked against the state and the nation.

What's next?

Because local knowledge is required to interpret and apply the findings appropriately, the Sumter Base Labor Analysis should be used with local stakeholders to identify and define key, targeted industry clusters. Some items to consider when defining these clusters may include the following.

1. *What is Sumter's economic base?*

In order for an economy to grow, it must have a base (export) sector that generates wealth from beyond its borders. Industries in the economic base (manufacturing, scientific and technology services, warehouse and distribution, financial services, regional healthcare, etc.) typically provide occupations with higher pay and benefits as well as better human capital development and promotion opportunities. A successful economic base stimulates the development of the non-base sector (housing, schools, retail, restaurants, personal services, etc.). It also propels the local tax base which, in turn, provides support to community services.

2. *What are strategies to assist low-wage citizens in non-base economy jobs?*

Although the economic base is the driver for long-term growth in a region, implementable strategies for developing job opportunities for low-skilled individuals is a priority for community economic well-being. This need must also be kept in mind when defining target industry clusters.

3. *What other factors are vital to Sumter and its community?*

Over and above pure economic considerations, what is important to the citizens of the Sumter community? How does Sumter want to be perceived? What quality of life issues affect Sumter? These questions may impact the types of industries desired for the area.

How Labor Market Information at the S.C. Department of Commerce can help.

Once local stakeholders have identified key industry clusters vital to the future economic development of the region, LMI can provide more in-depth analysis of each of these industries, their occupations, business establishments, and educational requirements.

1. Detailed Industry Analysis

For each identified industry, LMI can develop a detailed analysis of each sector, including employment, projected growth, staffing patterns, location quotients, and employers. Additionally, the analysis will examine the largest, fastest growing, and declining sectors within the industry cluster.

2. Detailed Occupational Analysis

At this point, the occupations—classified by SOC codes—that make up each of the identified industry clusters can be analyzed in detail. This analysis will include employment, average earnings, educational requirements, projected growth, and completers from available local training programs. It will culminate in identifying gaps between the number of occupations required to sustain and advance industry growth and the number of skilled workers (as identified by educational requirements and program completers) available to fulfill these positions.

3. Identification of Implementable Recommendations

LMI will utilize the findings of the analyses to develop a set of implementable recommendations. These may include recommendations to align community college programs with economic development goals along with others. Finally, local knowledge will once again be called upon to review the findings and develop an action plan for the implementation of feasible solutions.

Appendix A: Occupational Projections for Sumter County

SOC Code	Description	2009 Jobs	2016 Jobs	Change	% Change	Location Quotient	2009 Median Hourly Earnings (\$)	Typical Education & Experience Level
11-1011	Chief executives	205	230	25	12	0.61	19.52	Degree plus work experience
11-1021	General and operations managers	513	516	3	1	0.97	31.02	Degree plus work experience
11-1031	Legislators	30	28	-2	-7	1.58	8.02	Degree plus work experience
11-2021	Marketing managers	17	18	1	6	0.27	21.66	Degree plus work experience
11-2022	Sales managers	49	53	4	8	0.45	35.06	Degree plus work experience
11-3011	Administrative services managers	45	47	2	4	0.59	28.51	Degree plus work experience
11-3021	Computer and information systems managers	11	12	1	9	0.13	29.30	Degree plus work experience
11-3031	Financial managers	78	82	4	5	0.40	28.32	Degree plus work experience
11-3049	Human resources managers, all other	10	11	1	10	0.53	26.48	Degree plus work experience
11-3051	Industrial production managers	20	19	-1	-5	0.47	32.88	Work experience in a related field

SOC Code	Description	2009 Jobs	2016 Jobs	Change	% Change	Location Quotient	2009 Median Hourly Earnings (\$)	Typical Education & Experience Level
11-3071	Transportation, storage, and distribution managers	11	11	0	0	0.35	25.53	Work experience in a related field
11-9011	Farm, ranch, and other agricultural managers	115	118	3	3	0.72	10.98	Degree plus work experience
11-9012	Farmers and ranchers	374	360	-14	-4	0.74	6.55	Long-term on-the-job training
11-9021	Construction managers	298	368	70	23	1.42	20.77	Bachelor's degree
11-9031	Education administrators, preschool and child care center/program	20	20	0	0	0.67	12.26	Degree plus work experience
11-9032	Education administrators, elementary and secondary school	84	80	-4	-5	1.09	40.65	Degree plus work experience
11-9033	Education administrators, postsecondary	17	19	2	12	0.41	22.42	Degree plus work experience
11-9039	Education administrators, all other	21	22	1	5	1.14	20.94	Degree plus work experience
11-9041	Engineering managers	43	44	1	2	0.80	45.59	Degree plus work experience
11-9051	Food service managers	106	115	9	8	0.79	13.89	Work experience in a related field
11-9081	Lodging managers	36	47	11	31	0.86	11.99	Work experience in a related field

SOC Code	Description	2009 Jobs	2016 Jobs	Change	% Change	Location Quotient	2009 Median Hourly Earnings (\$)	Typical Education & Experience Level
11-9111	Medical and health services managers	115	130	15	13	1.20	29.83	Degree plus work experience
11-9141	Property, real estate, and community association managers	222	301	79	36	0.63	7.16	Bachelor's degree
11-9151	Social and community service managers	20	24	4	20	0.41	10.80	Bachelor's degree
11-9199	Managers, all other	253	286	33	13	0.53	9.55	Work experience in a related field
13-1022	Wholesale and retail buyers, except farm products	20	21	1	5	0.42	16.84	Work experience in a related field
13-1023	Purchasing agents, except wholesale, retail, and farm products	73	73	0	0	0.84	24.50	Work experience in a related field
13-1031	Claims adjusters, examiners, and investigators	42	41	-1	-2	0.47	22.49	Long-term on-the-job training
13-1041	Compliance officers, except agriculture, construction, health and safety, and transportation	34	34	0	0	0.47	21.48	Long-term on-the-job training
13-1051	Cost estimators	88	104	16	18	1.33	22.12	Work experience in a related field
13-1071	Employment, recruitment, and placement specialists	15	15	0	0	0.24	16.88	Bachelor's degree
13-1072	Compensation, benefits, and job analysis specialists	11	12	1	9	0.28	19.01	Bachelor's degree
13-1073	Training and development specialists	33	36	3	9	0.49	21.21	Bachelor's degree
13-1079	Human resources, training, and labor relations specialists, all other	25	27	2	8	0.34	22.74	Bachelor's degree

SOC Code	Description	2009 Jobs	2016 Jobs	Change	% Change	Location Quotient	2009 Median Hourly Earnings (\$)	Typical Education & Experience Level
13-1081	Logisticians	55	57	2	4	1.85	31.56	Bachelor's degree
13-1111	Management analysts	99	105	6	6	0.33	21.68	Degree plus work experience
13-1199	Business operation specialists, all other	119	130	11	9	0.37	25.76	Bachelor's degree
13-2011	Accountants and auditors	220	237	17	8	0.47	18.96	Bachelor's degree
13-2021	Appraisers and assessors of real estate	89	117	28	31	0.70	8.34	Postsecondary vocational award
13-2051	Financial analysts	21	28	7	33	0.19	11.59	Bachelor's degree
13-2052	Personal financial advisors	66	84	18	27	0.31	8.97	Bachelor's degree
13-2072	Loan officers	57	56	-1	-2	0.58	23.55	Bachelor's degree
13-2082	Tax preparers	15	14	-1	-7	0.46	10.32	Moderate-term on-the-job training
15-1021	Computer programmers	15	15	0	0	0.11	21.10	Bachelor's degree
15-1031	Computer software engineers, applications	10	12	2	20	0.06	25.20	Bachelor's degree
15-1032	Computer software engineers, systems software	12	13	1	8	0.09	25.94	Bachelor's degree
15-1041	Computer support specialists	47	50	3	6	0.28	15.68	Associate's degree
15-1051	Computer systems analysts	14	17	3	21	0.09	22.31	Bachelor's degree
15-1061	Database administrators	13	14	1	8	0.35	24.19	Bachelor's degree

SOC Code	Description	2009 Jobs	2016 Jobs	Change	% Change	Location Quotient	2009 Median Hourly Earnings (\$)	Typical Education & Experience Level
15-1071	Network and computer systems administrators	15	17	2	13	0.14	20.49	Bachelor's degree
15-1081	Network systems and data communications analysts	105	131	26	25	1.13	28.02	Bachelor's degree
15-1099	Computer specialists, all other	20	21	1	5	0.29	24.78	Associate's degree
17-1011	Architects, except landscape and naval	15	17	2	13	0.35	20.49	Bachelor's degree
17-1012	Landscape architects	14	17	3	21	0.81	16.47	Bachelor's degree
17-1022	Surveyors	25	25	0	0	1.43	19.14	Bachelor's degree
17-2041	Chemical engineers	10	10	0	0	1.08	36.56	Bachelor's degree
17-2051	Civil engineers	41	45	4	10	0.46	25.55	Bachelor's degree
17-2061	Computer hardware engineers	15	16	1	7	0.68	26.11	Bachelor's degree
17-2071	Electrical engineers	93	97	4	4	2.04	29.14	Bachelor's degree
17-2072	Electronics engineers, except computer	16	16	0	0	0.37	28.33	Bachelor's degree
17-2081	Environmental engineers	12	14	2	17	0.76	27.11	Bachelor's degree
17-2111	Health and safety engineers, except mining safety engineers and inspectors	34	39	5	15	4.35	30.61	Bachelor's degree
17-2112	Industrial engineers	61	70	9	15	1.01	30.93	Bachelor's degree
17-2131	Materials engineers	17	18	1	6	2.45	28.85	Bachelor's degree
17-2141	Mechanical engineers	82	85	3	4	1.23	25.11	Bachelor's degree
17-2161	Nuclear engineers	25	24	-1	-4	2.24	35.52	Bachelor's degree

SOC Code	Description	2009 Jobs	2016 Jobs	Change	% Change	Location Quotient	2009 Median Hourly Earnings (\$)	Typical Education & Experience Level
17-2199	Engineers, all other	18	19	1	6	0.33	28.08	Bachelor's degree
17-3011	Architectural and civil drafters	12	12	0	0	0.35	19.38	Postsecondary vocational award
17-3013	Mechanical drafters	27	30	3	11	1.21	23.20	Postsecondary vocational award
17-3022	Civil engineering technicians	12	11	-1	-8	0.44	17.21	Associate's degree
17-3023	Electrical and electronic engineering technicians	36	36	0	0	0.75	22.37	Associate's degree
17-3025	Environmental engineering technicians	11	15	4	36	1.57	18.78	Associate's degree
17-3026	Industrial engineering technicians	50	53	3	6	2.49	22.62	Associate's degree
17-3027	Mechanical engineering technicians	19	20	1	5	1.39	20.60	Associate's degree
17-3029	Engineering technicians, except drafters, all other	11	11	0	0	0.52	21.38	Associate's degree
17-3031	Surveying and mapping technicians	12	12	0	0	0.51	13.78	Moderate-term on-the-job training
19-2042	Geoscientists, except hydrologists and geographers	11	11	0	0	0.83	15.16	Master's degree
19-3031	Clinical, counseling, and school psychologists	12	13	1	8	0.22	14.50	Doctoral degree
19-4051	Nuclear technicians	25	29	4	16	8.79	21.70	Associate's degree
19-4091	Environmental science and protection technicians, including health	32	42	10	31	3.02	18.84	Associate's degree
21-1011	Substance abuse and behavioral disorder counselors	17	19	2	12	0.56	14.15	Master's degree

SOC Code	Description	2009 Jobs	2016 Jobs	Change	% Change	Location Quotient	2009 Median Hourly Earnings (\$)	Typical Education & Experience Level
21-1012	Educational, vocational, and school counselors	120	124	4	3	1.44	19.84	Master's degree
21-1014	Mental health counselors	16	18	2	13	0.42	14.48	Master's degree
21-1015	Rehabilitation counselors	34	37	3	9	0.83	12.94	Master's degree
21-1021	Child, family, and school social workers	123	125	2	2	1.32	15.57	Bachelor's degree
21-1022	Medical and public health social workers	59	64	5	8	1.32	16.18	Bachelor's degree
21-1023	Mental health and substance abuse social workers	14	16	2	14	0.31	9.56	Master's degree
21-1029	Social workers, all other	107	109	2	2	4.17	15.97	Bachelor's degree
21-1091	Health educators	15	17	2	13	0.71	16.96	Master's degree
21-1092	Probation officers and correctional treatment specialists	23	23	0	0	0.82	16.13	Bachelor's degree
21-1093	Social and human service assistants	76	85	9	12	0.68	7.39	Moderate-term on-the-job training
21-1099	Community and social service specialists, all other	22	25	3	14	0.59	10.50	Bachelor's degree
21-2011	Clergy	98	104	6	6	1.23	7.24	Master's degree
21-2021	Directors, religious activities and education	46	49	3	7	1.24	7.31	Bachelor's degree
21-2099	Religious workers, all other	21	23	2	10	1.20	6.77	Bachelor's degree
23-1011	Lawyers	103	108	5	5	0.41	29.39	First professional degree
23-2011	Paralegals and legal assistants	104	106	2	2	1.33	14.42	Associate's degree

SOC Code	Description	2009 Jobs	2016 Jobs	Change	% Change	Location Quotient	2009 Median Hourly Earnings (\$)	Typical Education & Experience Level
23-2093	Title examiners, abstractors, and searchers	18	17	-1	-6	0.71	8.22	Moderate-term on-the-job training
25-1099	Postsecondary teachers	557	628	71	13	1.06	31.28	Doctoral degree
25-2011	Preschool teachers, except special education	101	102	1	1	0.61	12.04	Postsecondary vocational award
25-2012	Kindergarten teachers, except special education	74	73	-1	-1	1.20	25.79	Bachelor's degree
25-2021	Elementary school teachers, except special education	458	445	-13	-3	0.94	25.62	Bachelor's degree
25-2022	Middle school teachers, except special and vocational education	312	299	-13	-4	1.48	25.10	Bachelor's degree
25-2023	Vocational education teachers, middle school	30	23	-7	-23	2.28	23.25	Degree plus work experience
25-2031	Secondary school teachers, except special and vocational education	232	213	-19	-8	0.70	23.41	Bachelor's degree
25-2032	Vocational education teachers, secondary school	70	60	-10	-14	2.13	27.14	Degree plus work experience
25-2041	Special education teachers, preschool, kindergarten, and elementary school	60	60	0	0	0.84	24.80	Bachelor's degree
25-2042	Special education teachers, middle school	46	46	0	0	1.44	25.88	Bachelor's degree
25-2043	Special education teachers, secondary school	44	42	-2	-5	0.96	26.07	Bachelor's degree
25-3011	Adult literacy, remedial education, and GED teachers and instructors	54	56	2	4	1.15	18.16	Bachelor's degree
25-3021	Self-enrichment education teachers	31	33	2	6	0.35	7.65	Work experience in a related field

SOC Code	Description	2009 Jobs	2016 Jobs	Change	% Change	Location Quotient	2009 Median Hourly Earnings (\$)	Typical Education & Experience Level
25-3099	Teachers and instructors, all other	194	191	-3	-2	0.96	9.32	Bachelor's degree
25-4021	Librarians	54	51	-3	-6	1.09	21.13	Master's degree
25-4031	Library technicians	45	44	-1	-2	1.25	10.69	Postsecondary vocational award
25-9031	Instructional coordinators	94	100	6	6	2.29	25.29	Master's degree
25-9041	Teacher assistants	391	375	-16	-4	0.91	9.86	Short-term on-the-job training
27-1011	Art directors	14	16	2	14	0.38	7.78	Degree plus work experience
27-1012	Craft artists	12	14	2	17	0.43	6.63	Long-term on-the-job training
27-1013	Fine artists, including painters, sculptors, and illustrators	14	15	1	7	0.46	7.22	Long-term on-the-job training
27-1014	Multi-media artists and animators	15	17	2	13	0.40	7.88	Bachelor's degree
27-1019	Artists and related workers, all other	12	14	2	17	0.41	6.61	Long-term on-the-job training
27-1021	Commercial and industrial designers	10	12	2	20	0.46	11.80	Bachelor's degree
27-1023	Floral designers	18	17	-1	-6	0.65	7.80	Moderate-term on-the-job training
27-1024	Graphic designers	13	14	1	8	0.17	10.48	Bachelor's degree

SOC Code	Description	2009 Jobs	2016 Jobs	Change	% Change	Location Quotient	2009 Median Hourly Earnings (\$)	Typical Education & Experience Level
27-1025	Interior designers	10	13	3	30	0.37	11.57	Associate's degree
27-1026	Merchandise displayers and window trimmers	10	12	2	20	0.34	8.72	Moderate-term on-the-job training
27-2012	Producers and directors	11	11	0	0	0.29	14.25	Degree plus work experience
27-2022	Coaches and scouts	11	12	1	9	0.17	10.37	Long-term on-the-job training
27-2041	Music directors and composers	33	37	4	12	0.62	6.59	Degree plus work experience
27-2042	Musicians and singers	61	67	6	10	0.82	6.80	Long-term on-the-job training
27-2099	Entertainers and performers, sports and related workers, all other	12	12	0	0	0.40	7.05	Long-term on-the-job training
27-3031	Public relations specialists	15	17	2	13	0.17	9.00	Bachelor's degree
27-3041	Editors	11	12	1	9	0.24	9.43	Bachelor's degree
27-3043	Writers and authors	43	50	7	16	0.41	7.11	Bachelor's degree
27-3091	Interpreters and translators	16	12	-4	-25	0.37	13.76	Long-term on-the-job training
27-4021	Photographers	91	68	-23	-25	0.42	11.90	Long-term on-the-job training

SOC Code	Description	2009 Jobs	2016 Jobs	Change	% Change	Location Quotient	2009 Median Hourly Earnings (\$)	Typical Education & Experience Level
29-1021	Dentists, general	17	18	1	6	0.59	68.88	First professional degree
29-1031	Dietitians and nutritionists	13	13	0	0	0.59	18.90	Bachelor's degree
29-1051	Pharmacists	98	131	33	34	1.22	44.10	First professional degree
29-1069	Physicians and surgeons	232	260	28	12	0.91	72.54	First professional degree
29-1071	Physician assistants	11	13	2	18	0.49	31.34	Bachelor's degree
29-1111	Registered nurses	624	707	83	13	0.81	28.68	Associate's degree
29-1122	Occupational therapists	17	18	1	6	0.51	21.42	Master's degree
29-1123	Physical therapists	26	30	4	15	0.44	26.29	Master's degree
29-1126	Respiratory therapists	20	23	3	15	0.65	20.98	Associate's degree
29-1127	Speech-language pathologists	32	30	-2	-6	0.74	22.98	Master's degree
29-1131	Veterinarians	13	12	-1	-8	0.58	34.13	First professional degree
29-2011	Medical and clinical laboratory technologists	25	26	1	4	0.49	20.50	Bachelor's degree
29-2012	Medical and clinical laboratory technicians	53	58	5	9	1.15	14.96	Associate's degree
29-2021	Dental hygienists	63	75	12	19	1.19	25.75	Associate's degree
29-2031	Cardiovascular technologists and technicians	13	15	2	15	0.85	19.49	Associate's degree

SOC Code	Description	2009 Jobs	2016 Jobs	Change	% Change	Location Quotient	2009 Median Hourly Earnings (\$)	Typical Education & Experience Level
29-2034	Radiologic technologists and technicians	53	58	5	9	0.84	14.04	Associate's degree
29-2041	Emergency medical technicians and paramedics	51	71	20	39	0.82	13.06	Postsecondary vocational award
29-2052	Pharmacy technicians	95	110	15	16	0.97	11.47	Moderate-term on-the-job training
29-2055	Surgical technologists	15	18	3	20	0.56	15.15	Postsecondary vocational award
29-2056	Veterinary technologists and technicians	12	13	1	8	0.51	12.51	Associate's degree
29-2061	Licensed practical and licensed vocational nurses	216	208	-8	-4	0.98	17.27	Postsecondary vocational award
29-2071	Medical records and health information technicians	74	79	5	7	1.45	11.41	Associate's degree
29-2081	Opticians, dispensing	13	16	3	23	0.59	11.30	Long-term on-the-job training
29-9011	Occupational health and safety specialists	30	29	-1	-3	1.81	21.27	Bachelor's degree
31-1011	Home health aides	413	530	117	28	1.38	7.79	Short-term on-the-job training
31-1012	Nursing aides, orderlies, and attendants	401	425	24	6	0.89	8.83	Postsecondary vocational award
31-1013	Psychiatric aides	60	84	24	40	1.47	6.67	Short-term on-the-job training
31-2021	Physical therapist assistants	15	16	1	7	0.80	19.27	Associate's degree

SOC Code	Description	2009 Jobs	2016 Jobs	Change	% Change	Location Quotient	2009 Median Hourly Earnings (\$)	Typical Education & Experience Level
31-2022	Physical therapist aides	26	24	-2	-8	1.86	8.58	Short-term on-the-job training
31-9011	Massage therapists	24	15	-9	-38	0.78	10.61	Postsecondary vocational award
31-9091	Dental assistants	74	87	13	18	0.83	14.12	Moderate-term on-the-job training
31-9092	Medical assistants	130	156	26	20	0.88	11.19	Moderate-term on-the-job training
31-9093	Medical equipment preparers	12	14	2	17	0.74	10.69	Short-term on-the-job training
31-9094	Medical transcriptionists	21	23	2	10	0.74	11.21	Postsecondary vocational award
31-9095	Pharmacy aides	17	20	3	18	0.87	7.45	Short-term on-the-job training
31-9096	Veterinary assistants and laboratory animal caretakers	11	11	0	0	0.43	7.84	Short-term on-the-job training
31-9099	Healthcare support workers, all other	32	34	2	6	0.54	9.68	Short-term on-the-job training
33-1011	First-line supervisors/managers of correctional officers	16	17	1	6	1.25	20.38	Work experience in a related field
33-1012	First-line supervisors/managers of police and detectives	47	46	-1	-2	1.77	21.87	Work experience in a related field

SOC Code	Description	2009 Jobs	2016 Jobs	Change	% Change	Location Quotient	2009 Median Hourly Earnings (\$)	Typical Education & Experience Level
33-1021	First-line supervisors/managers of fire fighting and prevention workers	24	24	0	0	1.44	19.16	Work experience in a related field
33-1099	First-line supervisors/managers, protective service workers, all other	54	63	9	17	3.07	19.86	Work experience in a related field
33-2011	Fire fighters	79	79	0	0	0.90	10.49	Long-term on-the-job training
33-3011	Bailiffs	13	13	0	0	2.10	9.25	Moderate-term on-the-job training
33-3012	Correctional officers and jailers	227	240	13	6	1.88	14.25	Moderate-term on-the-job training
33-3021	Detectives and criminal investigators	71	77	6	8	2.23	20.27	Work experience in a related field
33-3051	Police and sheriff's patrol officers	197	197	0	0	1.04	15.01	Long-term on-the-job training
33-9011	Animal control workers	14	14	0	0	2.60	10.84	Moderate-term on-the-job training
33-9021	Private detectives and investigators	18	25	7	39	0.87	9.61	Work experience in a related field
33-9032	Security guards	334	405	71	21	1.05	10.46	Short-term on-the-job training
33-9091	Crossing guards	16	15	-1	-6	0.79	8.72	Short-term on-the-job training

SOC Code	Description	2009 Jobs	2016 Jobs	Change	% Change	Location Quotient	2009 Median Hourly Earnings (\$)	Typical Education & Experience Level
33-9092	Lifeguards, ski patrol, and other recreational protective service workers	56	58	2	4	1.54	7.12	Short-term on-the-job training
33-9099	Protective service workers, all other	50	50	0	0	1.78	11.35	Short-term on-the-job training
35-1011	Chefs and head cooks	22	23	1	5	0.62	13.52	Work experience in a related field
35-1012	First-line supervisors/managers of food preparation and serving workers	306	338	32	10	1.16	12.09	Work experience in a related field
35-2011	Cooks, fast food	656	727	71	11	3.90	7.02	Short-term on-the-job training
35-2012	Cooks, institution and cafeteria	172	171	-1	-1	1.43	8.05	Moderate-term on-the-job training
35-2014	Cooks, restaurant	174	182	8	5	0.65	8.29	Long-term on-the-job training
35-2015	Cooks, short order	36	39	3	8	0.67	7.17	Short-term on-the-job training
35-2021	Food preparation workers	374	399	25	7	1.39	7.70	Short-term on-the-job training
35-3011	Bartenders	106	135	29	27	0.68	7.52	Short-term on-the-job training
35-3021	Combined food preparation and serving workers, including fast food	511	594	83	16	0.63	7.48	Short-term on-the-job training

SOC Code	Description	2009 Jobs	2016 Jobs	Change	% Change	Location Quotient	2009 Median Hourly Earnings (\$)	Typical Education & Experience Level
35-3022	Counter attendants, cafeteria, food concession, and coffee shop	376	408	32	9	2.42	7.84	Short-term on-the-job training
35-3031	Waiters and waitresses	472	500	28	6	0.67	7.09	Short-term on-the-job training
35-3041	Food servers, nonrestaurant	15	15	0	0	0.26	7.51	Short-term on-the-job training
35-9011	Dining room and cafeteria attendants and bartender helpers	81	85	4	5	0.65	7.06	Short-term on-the-job training
35-9021	Dishwashers	182	188	6	3	1.17	7.08	Short-term on-the-job training
35-9031	Hosts and hostesses, restaurant, lounge, and coffee shop	127	132	5	4	1.22	7.48	Short-term on-the-job training
37-1011	First-line supervisors/managers of housekeeping and janitorial workers	135	158	23	17	1.15	9.06	Work experience in a related field
37-1012	First-line supervisors/managers of landscaping, lawn service, and groundskeeping workers	28	37	9	32	0.63	8.45	Work experience in a related field
37-2011	Janitors and cleaners, except maids and housekeeping cleaners	705	740	35	5	1.05	7.80	Short-term on-the-job training
37-2012	Maids and housekeeping cleaners	689	804	115	17	1.10	7.46	Short-term on-the-job training
37-2019	Building cleaning workers, all other	152	198	46	30	0.92	6.57	Short-term on-the-job training

SOC Code	Description	2009 Jobs	2016 Jobs	Change	% Change	Location Quotient	2009 Median Hourly Earnings (\$)	Typical Education & Experience Level
37-2021	Pest control workers	16	22	6	38	0.58	8.78	Moderate-term on-the-job training
37-3011	Landscaping and groundskeeping workers	222	290	68	31	0.73	9.90	Short-term on-the-job training
37-3012	Pesticide handlers, sprayers, and applicators, vegetation	59	82	23	39	1.82	7.82	Moderate-term on-the-job training
37-3013	Tree trimmers and pruners	53	72	19	36	1.51	7.13	Short-term on-the-job training
37-3019	Grounds maintenance workers, all other	54	71	17	31	1.82	6.86	Short-term on-the-job training
39-1021	First-line supervisors/managers of personal service workers	47	35	-12	-26	0.67	8.66	Work experience in a related field
39-2011	Animal trainers	21	16	-5	-24	0.76	7.38	Moderate-term on-the-job training
39-2021	Nonfarm animal caretakers	108	72	-36	-33	1.00	6.93	Short-term on-the-job training
39-3012	Gaming and sports book writers and runners	11	11	0	0	1.15	6.55	Short-term on-the-job training
39-3091	Amusement and recreation attendants	40	40	0	0	0.52	6.55	Short-term on-the-job training
39-4021	Funeral attendants	14	10	-4	-29	1.40	8.00	Short-term on-the-job training

SOC Code	Description	2009 Jobs	2016 Jobs	Change	% Change	Location Quotient	2009 Median Hourly Earnings (\$)	Typical Education & Experience Level
39-5012	Hairdressers, hairstylists, and cosmetologists	86	39	-47	-55	0.52	7.13	Postsecondary vocational award
39-9011	Child care workers	669	729	60	9	1.18	6.83	Short-term on-the-job training
39-9021	Personal and home care aides	196	259	63	32	0.71	6.55	Short-term on-the-job training
39-9031	Fitness trainers and aerobics instructors	41	45	4	10	0.49	9.33	Postsecondary vocational award
39-9032	Recreation workers	90	89	-1	-1	0.86	9.46	Short-term on-the-job training
39-9099	Personal care and service workers, all other	23	14	-9	-39	0.62	6.75	Short-term on-the-job training
41-1011	First-line supervisors/managers of retail sales workers	681	693	12	2	1.04	11.46	Work experience in a related field
41-1012	First-line supervisors/managers of non-retail sales workers	137	155	18	13	0.51	9.09	Work experience in a related field
41-2011	Cashiers, except gaming	1,486	1,474	-12	-1	1.42	7.39	Short-term on-the-job training
41-2012	Gaming change persons and booth cashiers	11	11	0	0	0.60	11.36	Short-term on-the-job training
41-2021	Counter and rental clerks	116	120	4	3	0.87	8.93	Short-term on-the-job training

SOC Code	Description	2009 Jobs	2016 Jobs	Change	% Change	Location Quotient	2009 Median Hourly Earnings (\$)	Typical Education & Experience Level
41-2022	Parts salespersons	125	124	-1	-1	1.96	9.58	Moderate-term on-the-job training
41-2031	Retail salespersons	1,404	1,498	94	7	0.96	8.76	Short-term on-the-job training
41-3011	Advertising sales agents	16	16	0	0	0.25	12.80	Moderate-term on-the-job training
41-3021	Insurance sales agents	176	173	-3	-2	0.83	14.67	Bachelor's degree
41-3031	Securities, commodities, and financial services sales agents	71	81	10	14	0.38	13.81	Bachelor's degree
41-3099	Sales representatives, services, all other	96	116	20	21	0.43	11.58	Moderate-term on-the-job training
41-4011	Sales representatives, wholesale and manufacturing, technical and scientific products	67	79	12	18	0.43	17.36	Moderate-term on-the-job training
41-4012	Sales representatives, wholesale and manufacturing, except technical and scientific products	246	273	27	11	0.53	18.41	Moderate-term on-the-job training
41-9011	Demonstrators and product promoters	14	15	1	7	0.38	6.63	Moderate-term on-the-job training
41-9021	Real estate brokers	378	513	135	36	0.71	6.87	Work experience in a related field
41-9022	Real estate sales agents	423	558	135	32	0.75	7.13	Postsecondary vocational award
41-9041	Telemarketers	16	15	-1	-6	0.16	6.72	Short-term on-the-job training

SOC Code	Description	2009 Jobs	2016 Jobs	Change	% Change	Location Quotient	2009 Median Hourly Earnings (\$)	Typical Education & Experience Level
41-9091	Door-to-door sales workers, news and street vendors, and related workers	205	220	15	7	0.69	6.55	Short-term on-the-job training
41-9099	Sales and related workers, all other	42	44	2	5	0.45	6.78	Moderate-term on-the-job training
43-1011	First-line supervisors/managers of office and administrative support workers	368	374	6	2	0.80	18.51	Work experience in a related field
43-2011	Switchboard operators, including answering service	42	38	-4	-10	0.93	9.26	Short-term on-the-job training
43-3011	Bill and account collectors	108	121	13	12	0.88	11.07	Short-term on-the-job training
43-3021	Billing and posting clerks and machine operators	138	141	3	2	0.89	12.87	Moderate-term on-the-job training
43-3031	Bookkeeping, accounting, and auditing clerks	497	530	33	7	0.76	12.29	Moderate-term on-the-job training
43-3051	Payroll and timekeeping clerks	63	61	-2	-3	1.05	13.37	Moderate-term on-the-job training
43-3061	Procurement clerks	28	27	-1	-4	1.21	12.22	Short-term on-the-job training
43-3071	Tellers	259	238	-21	-8	1.39	10.56	Short-term on-the-job training
43-4011	Brokerage clerks	37	36	-1	-3	1.83	11.40	Moderate-term on-the-job training

SOC Code	Description	2009 Jobs	2016 Jobs	Change	% Change	Location Quotient	2009 Median Hourly Earnings (\$)	Typical Education & Experience Level
43-4031	Court, municipal, and license clerks	13	13	0	0	0.38	11.85	Short-term on-the-job training
43-4041	Credit authorizers, checkers, and clerks	23	21	-2	-9	1.23	11.79	Short-term on-the-job training
43-4051	Customer service representatives	328	377	49	15	0.48	11.64	Moderate-term on-the-job training
43-4061	Eligibility interviewers, government programs	13	12	-1	-8	0.38	14.16	Moderate-term on-the-job training
43-4071	File clerks	34	25	-9	-26	0.54	8.91	Short-term on-the-job training
43-4081	Hotel, motel, and resort desk clerks	19	15	-4	-21	0.29	8.34	Short-term on-the-job training
43-4111	Interviewers, except eligibility and loan	67	70	3	4	0.88	11.40	Short-term on-the-job training
43-4121	Library assistants, clerical	20	19	-1	-5	0.56	8.54	Short-term on-the-job training
43-4131	Loan interviewers and clerks	65	61	-4	-6	1.02	13.56	Short-term on-the-job training
43-4141	New accounts clerks	18	13	-5	-28	0.70	12.07	Work experience in a related field
43-4151	Order clerks	39	32	-7	-18	0.57	11.46	Short-term on-the-job training

SOC Code	Description	2009 Jobs	2016 Jobs	Change	% Change	Location Quotient	2009 Median Hourly Earnings (\$)	Typical Education & Experience Level
43-4161	Human resources assistants, except payroll and timekeeping	53	52	-1	-2	1.07	13.92	Short-term on-the-job training
43-4171	Receptionists and information clerks	324	344	20	6	0.94	9.58	Short-term on-the-job training
43-4181	Reservation and transportation ticket agents and travel clerks	15	14	-1	-7	0.31	9.42	Short-term on-the-job training
43-4199	Information and record clerks, all other	25	20	-5	-20	0.39	12.47	Short-term on-the-job training
43-5021	Couriers and messengers	72	95	23	32	0.87	7.17	Short-term on-the-job training
43-5031	Police, fire, and ambulance dispatchers	23	24	1	4	0.78	11.02	Moderate-term on-the-job training
43-5032	Dispatchers, except police, fire, and ambulance	23	26	3	13	0.40	13.16	Moderate-term on-the-job training
43-5041	Meter readers, utilities	17	15	-2	-12	1.20	11.76	Short-term on-the-job training
43-5051	Postal service clerks	18	18	0	0	0.79	21.21	Short-term on-the-job training
43-5052	Postal service mail carriers	120	121	1	1	1.19	24.21	Short-term on-the-job training
43-5061	Production, planning, and expediting clerks	51	52	1	2	0.63	17.53	Short-term on-the-job training

SOC Code	Description	2009 Jobs	2016 Jobs	Change	% Change	Location Quotient	2009 Median Hourly Earnings (\$)	Typical Education & Experience Level
43-5071	Shipping, receiving, and traffic clerks	139	137	-2	-1	0.64	10.89	Short-term on-the-job training
43-5081	Stock clerks and order fillers	386	347	-39	-10	0.70	8.37	Short-term on-the-job training
43-6011	Executive secretaries and administrative assistants	210	225	15	7	0.42	12.92	Moderate-term on-the-job training
43-6012	Legal secretaries	53	55	2	4	0.50	10.83	Postsecondary vocational award
43-6013	Medical secretaries	98	108	10	10	0.58	10.60	Postsecondary vocational award
43-6014	Secretaries, except legal, medical, and executive	681	662	-19	-3	1.09	11.76	Moderate-term on-the-job training
43-9021	Data entry keyers	31	28	-3	-10	0.35	9.37	Moderate-term on-the-job training
43-9022	Word processors and typists	30	29	-1	-3	0.56	9.42	Moderate-term on-the-job training
43-9041	Insurance claims and policy processing clerks	80	76	-4	-5	1.05	12.13	Moderate-term on-the-job training
43-9051	Mail clerks and mail machine operators, except postal service	26	22	-4	-15	0.58	10.39	Short-term on-the-job training
43-9061	Office clerks, general	1,062	1,104	42	4	1.17	9.72	Short-term on-the-job training

SOC Code	Description	2009 Jobs	2016 Jobs	Change	% Change	Location Quotient	2009 Median Hourly Earnings (\$)	Typical Education & Experience Level
43-9199	Office and administrative support workers, all other	50	46	-4	-8	0.57	11.29	Short-term on-the-job training
45-1099	Supervisors, farming, fishing, and forestry workers	12	11	-1	-8	0.70	19.39	Work experience in a related field
45-2091	Agricultural equipment operators	12	12	0	0	0.56	9.44	Moderate-term on-the-job training
45-2092	Farmworkers and laborers, crop, nursery, and greenhouse	117	123	6	5	0.56	9.28	Short-term on-the-job training
45-2093	Farmworkers, farm and ranch animals	21	20	-1	-5	0.76	11.87	Short-term on-the-job training
45-4022	Logging equipment operators	13	14	1	8	1.19	15.45	Moderate-term on-the-job training
47-1011	First-line supervisors/managers of construction trades and extraction workers	303	351	48	16	1.02	16.23	Work experience in a related field
47-2021	Brickmasons and blockmasons	22	25	3	14	0.56	11.85	Long-term on-the-job training
47-2022	Stonemasons	12	14	2	17	0.80	10.59	Long-term on-the-job training
47-2031	Carpenters	246	296	50	20	0.55	10.46	Long-term on-the-job training
47-2041	Carpet installers	12	15	3	25	0.72	10.46	Moderate-term on-the-job training

SOC Code	Description	2009 Jobs	2016 Jobs	Change	% Change	Location Quotient	2009 Median Hourly Earnings (\$)	Typical Education & Experience Level
47-2043	Floor sanders and finishers	16	18	2	13	1.60	10.39	Moderate-term on-the-job training
47-2044	Tile and marble setters	29	33	4	14	1.32	11.14	Long-term on-the-job training
47-2051	Cement masons and concrete finishers	105	122	17	16	1.80	14.52	Moderate-term on-the-job training
47-2061	Construction laborers	655	729	74	11	1.63	10.94	Moderate-term on-the-job training
47-2071	Paving, surfacing, and tamping equipment operators	69	68	-1	-1	3.86	13.96	Moderate-term on-the-job training
47-2072	Pile-driver operators	14	16	2	14	1.59	11.29	Moderate-term on-the-job training
47-2073	Operating engineers and other construction equipment operators	221	242	21	10	1.79	13.85	Moderate-term on-the-job training
47-2081	Drywall and ceiling tile installers	27	31	4	15	0.60	11.00	Moderate-term on-the-job training
47-2082	Tapers	13	15	2	15	0.69	10.73	Moderate-term on-the-job training
47-2111	Electricians	133	116	-17	-13	0.64	14.24	Long-term on-the-job training
47-2121	Glaziers	20	21	1	5	1.23	10.91	Long-term on-the-job training

SOC Code	Description	2009 Jobs	2016 Jobs	Change	% Change	Location Quotient	2009 Median Hourly Earnings (\$)	Typical Education & Experience Level
47-2131	Insulation workers, floor, ceiling, and wall	12	13	1	8	1.36	12.09	Moderate-term on-the-job training
47-2141	Painters, construction and maintenance	131	149	18	14	0.86	11.61	Moderate-term on-the-job training
47-2151	Pipelayers	28	31	3	11	0.91	10.24	Moderate-term on-the-job training
47-2152	Plumbers, pipefitters, and steamfitters	182	208	26	14	1.33	14.16	Long-term on-the-job training
47-2181	Roofers	92	95	3	3	1.85	10.69	Moderate-term on-the-job training
47-2211	Sheet metal workers	46	51	5	11	0.96	11.96	Long-term on-the-job training
47-2221	Structural iron and steel workers	44	53	9	20	2.15	17.21	Long-term on-the-job training
47-3011	Helpers, brickmasons, blockmasons, stonemasons, and tile and marble setters	16	16	0	0	1.07	8.79	Short-term on-the-job training
47-3012	Helpers, carpenters	40	44	4	10	1.74	9.25	Short-term on-the-job training
47-3013	Helpers, electricians	17	11	-6	-35	0.60	8.73	Short-term on-the-job training
47-3015	Helpers, pipelayers, plumbers, pipefitters, and steamfitters	72	81	9	13	3.17	10.10	Short-term on-the-job training

SOC Code	Description	2009 Jobs	2016 Jobs	Change	% Change	Location Quotient	2009 Median Hourly Earnings (\$)	Typical Education & Experience Level
47-4011	Construction and building inspectors	21	23	2	10	0.56	14.31	Work experience in a related field
47-4041	Hazardous materials removal workers	26	44	18	69	2.03	17.19	Moderate-term on-the-job training
47-4071	Septic tank servicers and sewer pipe cleaners	14	17	3	21	1.62	10.66	Moderate-term on-the-job training
49-1011	First-line supervisors/managers of mechanics, installers, and repairers	356	361	5	1	2.71	23.81	Work experience in a related field
49-2011	Computer, automated teller, and office machine repairers	25	32	7	28	0.52	12.29	Postsecondary vocational award
49-2022	Telecommunications equipment installers and repairers, except line installers	25	26	1	4	0.42	14.58	Long-term on-the-job training
49-2094	Electrical and electronics repairers, commercial and industrial equipment	30	32	2	7	1.37	15.79	Postsecondary vocational award
49-2095	Electrical and electronics repairers, powerhouse, substation, and relay	18	19	1	6	2.52	24.49	Postsecondary vocational award
49-2097	Electronic home entertainment equipment installers and repairers	16	16	0	0	0.98	11.18	Postsecondary vocational award
49-2098	Security and fire alarm systems installers	12	12	0	0	0.59	11.35	Postsecondary vocational award
49-3011	Aircraft mechanics and service technicians	13	13	0	0	0.37	19.19	Postsecondary vocational award

SOC Code	Description	2009 Jobs	2016 Jobs	Change	% Change	Location Quotient	2009 Median Hourly Earnings (\$)	Typical Education & Experience Level
49-3021	Automotive body and related repairers	67	73	6	9	1.28	13.70	Long-term on-the-job training
49-3023	Automotive service technicians and mechanics	294	316	22	7	1.22	11.51	Postsecondary vocational award
49-3031	Bus and truck mechanics and diesel engine specialists	97	118	21	22	1.19	13.57	Postsecondary vocational award
49-3042	Mobile heavy equipment mechanics, except engines	52	55	3	6	1.36	14.71	Postsecondary vocational award
49-3093	Tire repairers and changers	17	20	3	18	0.62	8.58	Short-term on-the-job training
49-9012	Control and valve installers and repairers, except mechanical door	14	15	1	7	1.09	22.64	Moderate-term on-the-job training
49-9021	Heating, air conditioning, and refrigeration mechanics and installers	145	160	15	10	1.54	14.32	Long-term on-the-job training
49-9031	Home appliance repairers	21	25	4	19	0.88	8.69	Long-term on-the-job training
49-9041	Industrial machinery mechanics	72	73	1	1	0.88	16.94	Long-term on-the-job training
49-9042	Maintenance and repair workers, general	700	677	-23	-3	1.72	14.07	Moderate-term on-the-job training
49-9043	Maintenance workers, machinery	16	14	-2	-13	0.75	14.33	Short-term on-the-job training

SOC Code	Description	2009 Jobs	2016 Jobs	Change	% Change	Location Quotient	2009 Median Hourly Earnings (\$)	Typical Education & Experience Level
49-9044	Millwrights	14	17	3	21	1.08	17.09	Long-term on-the-job training
49-9051	Electrical power-line installers and repairers	270	298	28	10	8.04	20.25	Long-term on-the-job training
49-9052	Telecommunications line installers and repairers	29	30	1	3	0.54	13.30	Long-term on-the-job training
49-9062	Medical equipment repairers	11	16	5	45	0.87	13.41	Associate's degree
49-9091	Coin, vending, and amusement machine servicers and repairers	17	18	1	6	0.96	9.70	Moderate-term on-the-job training
49-9094	Locksmiths and safe repairers	14	18	4	29	1.10	8.55	Moderate-term on-the-job training
49-9098	Helpers--Installation, maintenance, and repair workers	51	57	6	12	1.19	9.05	Short-term on-the-job training
49-9099	Installation, maintenance, and repair workers, all other	14	17	3	21	0.30	10.88	Moderate-term on-the-job training
51-1011	First-line supervisors/managers of production and operating workers	209	188	-21	-10	1.08	21.69	Work experience in a related field
51-2011	Aircraft structure, surfaces, rigging, and systems assemblers	25	24	-1	-4	2.23	16.78	Long-term on-the-job training
51-2022	Electrical and electronic equipment assemblers	25	23	-2	-8	0.44	11.68	Short-term on-the-job training

SOC Code	Description	2009 Jobs	2016 Jobs	Change	% Change	Location Quotient	2009 Median Hourly Earnings (\$)	Typical Education & Experience Level
51-2031	Engine and other machine assemblers	17	20	3	18	1.63	11.30	Short-term on-the-job training
51-2041	Structural metal fabricators and fitters	20	24	4	20	0.64	13.43	Moderate-term on-the-job training
51-2091	Fiberglass laminators and fabricators	39	38	-1	-3	3.62	11.05	Moderate-term on-the-job training
51-2092	Team assemblers	530	524	-6	-1	1.74	14.31	Moderate-term on-the-job training
51-2099	Assemblers and fabricators, all other	50	46	-4	-8	0.61	10.22	Moderate-term on-the-job training
51-3011	Bakers	20	21	1	5	0.45	8.96	Long-term on-the-job training
51-3021	Butchers and meat cutters	42	31	-11	-26	1.09	11.50	Long-term on-the-job training
51-3022	Meat, poultry, and fish cutters and trimmers	96	69	-27	-28	2.04	8.27	Short-term on-the-job training
51-3023	Slaughterers and meat packers	58	42	-16	-28	2.00	6.69	Moderate-term on-the-job training
51-3092	Food batchmakers	32	26	-6	-19	1.08	9.97	Short-term on-the-job training
51-4011	Computer-controlled machine tool operators, metal and plastic	142	154	12	8	3.65	13.38	Moderate-term on-the-job training

SOC Code	Description	2009 Jobs	2016 Jobs	Change	% Change	Location Quotient	2009 Median Hourly Earnings (\$)	Typical Education & Experience Level
51-4021	Extruding and drawing machine setters, operators, and tenders, metal and plastic	70	62	-8	-11	2.81	12.32	Moderate-term on-the-job training
51-4023	Rolling machine setters, operators, and tenders, metal and plastic	16	18	2	13	1.62	15.16	Moderate-term on-the-job training
51-4031	Cutting, punching, and press machine setters, operators, and tenders, metal and plastic	250	221	-29	-12	3.93	15.21	Moderate-term on-the-job training
51-4032	Drilling and boring machine tool setters, operators, and tenders, metal and plastic	20	18	-2	-10	2.16	12.41	Moderate-term on-the-job training
51-4033	Grinding, lapping, polishing, and buffing machine tool setters, operators, and tenders, metal and plastic	31	27	-4	-13	1.23	13.09	Moderate-term on-the-job training
51-4034	Lathe and turning machine tool setters, operators, and tenders, metal and plastic	27	24	-3	-11	1.70	14.13	Moderate-term on-the-job training
51-4041	Machinists	58	60	2	3	0.51	14.52	Long-term on-the-job training
51-4072	Molding, coremaking, and casting machine setters, operators, and tenders, metal and plastic	45	40	-5	-11	1.16	11.79	Moderate-term on-the-job training
51-4081	Multiple machine tool setters, operators, and tenders, metal and plastic	15	15	0	0	0.63	11.82	Moderate-term on-the-job training
51-4111	Tool and die makers	28	24	-4	-14	1.19	16.83	Long-term on-the-job training
51-4121	Welders, cutters, solderers, and brazers	182	223	41	23	1.57	12.70	Long-term on-the-job training

SOC Code	Description	2009 Jobs	2016 Jobs	Change	% Change	Location Quotient	2009 Median Hourly Earnings (\$)	Typical Education & Experience Level
51-4122	Welding, soldering, and brazing machine setters, operators, and tenders	38	42	4	11	1.79	12.76	Moderate-term on-the-job training
51-4191	Heat treating equipment setters, operators, and tenders, metal and plastic	26	23	-3	-12	3.78	12.87	Moderate-term on-the-job training
51-4193	Plating and coating machine setters, operators, and tenders, metal and plastic	15	16	1	7	1.27	11.03	Moderate-term on-the-job training
51-5011	Bindery workers	16	14	-2	-13	0.91	9.87	Short-term on-the-job training
51-5021	Job printers	14	14	0	0	1.03	11.95	Long-term on-the-job training
51-5023	Printing machine operators	21	17	-4	-19	0.37	12.36	Moderate-term on-the-job training
51-6011	Laundry and dry-cleaning workers	174	176	2	1	2.20	8.45	Moderate-term on-the-job training
51-6021	Pressers, textile, garment, and related materials	24	22	-2	-8	1.21	7.79	Short-term on-the-job training
51-6031	Sewing machine operators	13	12	-1	-8	0.22	10.91	Moderate-term on-the-job training
51-6051	Sewers, hand	20	24	4	20	0.98	7.00	Short-term on-the-job training
51-6052	Tailors, dressmakers, and custom sewers	21	25	4	19	0.75	7.07	Long-term on-the-job training

SOC Code	Description	2009 Jobs	2016 Jobs	Change	% Change	Location Quotient	2009 Median Hourly Earnings (\$)	Typical Education & Experience Level
51-6061	Textile bleaching and dyeing machine operators and tenders	25	13	-12	-48	5.12	10.17	Moderate-term on-the-job training
51-6064	Textile winding, twisting, and drawing out machine setters, operators, and tenders	28	14	-14	-50	2.87	9.64	Moderate-term on-the-job training
51-6091	Extruding and forming machine setters, operators, and tenders, synthetic and glass fibers	21	10	-11	-52	4.49	12.92	Moderate-term on-the-job training
51-6093	Upholsterers	19	23	4	21	0.72	8.29	Long-term on-the-job training
51-7011	Cabinetmakers and bench carpenters	35	27	-8	-23	0.93	10.32	Long-term on-the-job training
51-7021	Furniture finishers	11	12	1	9	0.87	8.49	Long-term on-the-job training
51-7041	Sawing machine setters, operators, and tenders, wood	13	14	1	8	0.85	9.71	Moderate-term on-the-job training
51-7042	Woodworking machine setters, operators, and tenders, except sawing	52	53	1	2	2.18	10.87	Moderate-term on-the-job training
51-8011	Nuclear power reactor operators	16	19	3	19	6.66	25.29	Long-term on-the-job training
51-8013	Power plant operators	50	53	3	6	4.47	26.30	Long-term on-the-job training
51-8021	Stationary engineers and boiler operators	15	15	0	0	1.25	15.42	Long-term on-the-job training

SOC Code	Description	2009 Jobs	2016 Jobs	Change	% Change	Location Quotient	2009 Median Hourly Earnings (\$)	Typical Education & Experience Level
51-8031	Water and liquid waste treatment plant and system operators	50	53	3	6	1.51	12.62	Long-term on-the-job training
51-8091	Chemical plant and system operators	29	25	-4	-14	2.15	16.75	Long-term on-the-job training
51-8092	Gas plant operators	13	17	4	31	2.67	17.50	Long-term on-the-job training
51-8093	Petroleum pump system operators, refinery operators, and gaugers	13	11	-2	-15	0.96	21.15	Long-term on-the-job training
51-9011	Chemical equipment operators and tenders	166	150	-16	-10	10.68	22.73	Moderate-term on-the-job training
51-9012	Separating, filtering, clarifying, precipitating, and still machine setters, operators, and tenders	19	16	-3	-16	1.50	13.74	Moderate-term on-the-job training
51-9021	Crushing, grinding, and polishing machine setters, operators, and tenders	18	14	-4	-22	1.48	15.23	Moderate-term on-the-job training
51-9022	Grinding and polishing workers, hand	12	12	0	0	1.07	9.83	Moderate-term on-the-job training
51-9023	Mixing and blending machine setters, operators, and tenders	66	58	-8	-12	1.66	11.34	Moderate-term on-the-job training
51-9032	Cutting and slicing machine setters, operators, and tenders	39	32	-7	-18	1.87	12.03	Moderate-term on-the-job training
51-9041	Extruding, forming, pressing, and compacting machine setters, operators, and tenders	43	39	-4	-9	1.91	12.14	Moderate-term on-the-job training

SOC Code	Description	2009 Jobs	2016 Jobs	Change	% Change	Location Quotient	2009 Median Hourly Earnings (\$)	Typical Education & Experience Level
51-9051	Furnace, kiln, oven, drier, and kettle operators and tenders	22	21	-1	-5	3.38	13.18	Moderate-term on-the-job training
51-9061	Inspectors, testers, sorters, samplers, and weighers	348	296	-52	-15	2.62	11.42	Moderate-term on-the-job training
51-9071	Jewelers and precious stone and metal workers	12	14	2	17	0.77	14.55	Postsecondary vocational award
51-9111	Packaging and filling machine operators and tenders	32	23	-9	-28	0.32	9.68	Short-term on-the-job training
51-9121	Coating, painting, and spraying machine setters, operators, and tenders	92	88	-4	-4	3.17	13.23	Moderate-term on-the-job training
51-9122	Painters, transportation equipment	18	20	2	11	1.17	14.15	Long-term on-the-job training
51-9123	Painting, coating, and decorating workers	13	13	0	0	1.23	9.86	Short-term on-the-job training
51-9132	Photographic processing machine operators	24	18	-6	-25	1.45	9.53	Short-term on-the-job training
51-9195	Molders, shapers, and casters, except metal and plastic	24	34	10	42	1.76	11.82	Moderate-term on-the-job training
51-9196	Paper goods machine setters, operators, and tenders	86	76	-10	-12	2.95	14.06	Moderate-term on-the-job training
51-9197	Tire builders	66	73	7	11	10.56	13.33	Moderate-term on-the-job training

SOC Code	Description	2009 Jobs	2016 Jobs	Change	% Change	Location Quotient	2009 Median Hourly Earnings (\$)	Typical Education & Experience Level
51-9198	Helpers--Production workers	38	31	-7	-18	0.29	8.94	Short-term on-the-job training
51-9199	Production workers, all other	87	70	-17	-20	1.18	10.16	Moderate-term on-the-job training
53-1021	First-line supervisors/managers of helpers, laborers, and material movers, hand	52	57	5	10	0.94	16.61	Work experience in a related field
53-1031	First-line supervisors/managers of transportation and material-moving machine and vehicle operators	19	22	3	16	0.29	19.41	Work experience in a related field
53-3011	Ambulance drivers and attendants, except emergency medical technicians	18	23	5	28	2.81	8.15	Moderate-term on-the-job training
53-3021	Bus drivers, transit and intercity	26	23	-3	-12	0.44	8.29	Moderate-term on-the-job training
53-3022	Bus drivers, school	76	71	-5	-7	0.54	7.46	Short-term on-the-job training
53-3031	Driver/sales workers	103	114	11	11	0.59	10.95	Short-term on-the-job training
53-3032	Truck drivers, heavy and tractor-trailer	580	733	153	26	1.07	15.18	Moderate-term on-the-job training
53-3033	Truck drivers, light or delivery services	359	398	39	11	1.09	12.33	Short-term on-the-job training
53-3041	Taxi drivers and chauffeurs	21	23	2	10	0.22	6.91	Short-term on-the-job training

SOC Code	Description	2009 Jobs	2016 Jobs	Change	% Change	Location Quotient	2009 Median Hourly Earnings (\$)	Typical Education & Experience Level
53-4019	Locomotive engineers and operators	12	12	0	0	0.85	18.00	Moderate-term on-the-job training
53-6021	Parking lot attendants	23	23	0	0	0.56	7.36	Short-term on-the-job training
53-6031	Service station attendants	11	13	2	18	0.45	9.14	Short-term on-the-job training
53-7021	Crane and tower operators	11	12	1	9	0.85	15.44	Long-term on-the-job training
53-7032	Excavating and loading machine and dragline operators	16	19	3	19	0.81	10.97	Moderate-term on-the-job training
53-7051	Industrial truck and tractor operators	319	292	-27	-8	1.81	12.06	Short-term on-the-job training
53-7061	Cleaners of vehicles and equipment	28	29	1	4	0.28	7.93	Short-term on-the-job training
53-7062	Laborers and freight, stock, and material movers, hand	1,761	1,632	-129	-7	2.62	10.15	Short-term on-the-job training
53-7063	Machine feeders and offbearers	65	51	-14	-22	1.78	10.87	Short-term on-the-job training
53-7064	Packers and packagers, hand	265	193	-72	-27	1.21	12.23	Short-term on-the-job training
53-7081	Refuse and recyclable material collectors	50	83	33	66	1.11	11.15	Short-term on-the-job training
		51,659	53,996	2,337	5%		\$14.13	

SOC Code	Description	2009 Jobs	2016 Jobs	Change	% Change	Location Quotient	2009 Median Hourly Earnings (\$)	Typical Education & Experience Level
----------	-------------	-----------	-----------	--------	----------	-------------------	----------------------------------	--------------------------------------



at least
1.25

greater than \$14.13

Source: EMSI

Appendix B: Businesses by 3-Digit NAICS Codes

Sumter County								
Industry	NAICS Code			Average		Change		US % change
		2003	2008	Size	#	%	SC % change	
Animal Production	112	7	6	35	-1	-14.3	-9.7	6.3
Support Activities for Agriculture and Forestry	115	9	7	9	-2	-22.2	-3.1	2.8
Utilities	221	6	10	11	4	66.7	4.0	0.5
Construction of Buildings	236	67	63	14	-4	-6.0	6.4	12.3
Heavy and Civil Engineering Construction	237	22	23	36	1	4.5	4.2	-0.5
Specialty Trade Contractors	238	167	123	8	-44	-26.3	-3.0	11.1
Printing and Related Support Activities	323	5	4	9	-1	-20.0	-9.1	-11.7
Machinery Manufacturing	333	6	8	41	2	33.3	-6.8	-8.0
Merchant Wholesalers, Durable Goods	423	41	49	11	8	19.5	-5.9	-3.6
Merchant Wholesalers, Nondurable Goods	424	21	19	12	-2	-9.5	-11.3	-3.4
Wholesale Electronic Markets and Agents and Brokers	425	11	12	7	1	9.1	80.4	30.9
Motor Vehicle and Parts Dealers	441	64	62	12	-2	-3.1	-7.7	1.6
Furniture and Home Furnishings Stores	442	27	26	6	-1	-3.7	-8.7	0.1
Electronics and Appliance Stores	443	15	12	4	-3	-20.0	-15.0	-1.0
Building Material and Garden Equipment and Supplies Dealers	444	27	25	14	-2	-7.4	-5.4	1.2
Food and Beverage Stores	445	50	33	26	-17	-34.0	-9.7	-0.1
Health and Personal Care Stores	446	26	34	10	8	30.8	16.3	19.9
Gasoline Stations	447	60	59	6	-1	-1.7	-0.3	-2.2
Clothing and Clothing Accessories Stores	448	52	49	7	-3	-5.8	-1.9	5.8
Sporting Goods, Hobby, Book, and Music Stores	451	15	13	3	-2	-13.3	-7.0	-6.7
General Merchandise Stores	452	27	29	30	2	7.4	18.1	13.0
Miscellaneous Store Retailers	453	48	38	5	-10	-20.8	-19.8	-9.2
Nonstore Retailers	454	6	4	9	-2	-33.3	-16.2	13.9
Truck Transportation	484	28	39	17	11	39.3	-1.6	5.2
Support Activities for Transportation	488	7	8	2	1	14.3	3.4	9.9
Warehousing and Storage	493	6	6	18	0	0.0	3.1	18.7
Telecommunications	517	13	15	9	2	15.4	41.8	9.6
Credit Intermediation and Related Activities	522	70	69	9	-1	-1.4	6.5	16.6
Securities, Commodity Contracts, and Other Financial Investments and Related Activities	523	10	14	0	4	40.0	53.4	23.4
Insurance Carriers and Related Activities	524	37	31	6	-6	-16.2	4.3	5.0
Real Estate	531	55	52	3	-3	-5.5	22.1	18.2
Rental and Leasing Services	532	22	19	5	-3	-13.6	-8.8	1.3

Sumter County									
Industry	NAICS Code	2003	2008	Average Size	Change			SC % change	US % change
					#	%			
Professional, Scientific, and Technical Services	541	124	135	5	11	8.9	15.7	15.6	
Management of Companies and Enterprises	551	9	12	18	3	33.3	67.7	31.5	
Administrative and Support Services	561	83	72	0	-11	-13.3	10.6	13.9	
Waste Management and Remediation Services	562	7	5	0	-2	-28.6	12.3	15.6	
Educational Services	611	16	17	29	1	6.3	26.4	23.3	
Ambulatory Health Care Services	621	89	100	12	11	12.4	10.2	12.4	
Nursing and Residential Care Facilities	623	35	38	21	3	8.6	0.0	9.4	
Accommodation	721	15	17	10	2	13.3	0.1	4.9	
Food Services and Drinking Places	722	134	141	20	7	5.2	3.4	11.5	
Repair and Maintenance	811	80	64	6	-16	-20.0	-13.2	-0.9	
Personal and Laundry Services	812	55	53	8	-2	-3.6	2.2	7.2	
Religious, Grantmaking, Civic, Professional, and Similar Organizations	813	17	22	6	5	29.4	18.3	4.1	
Private Households	814	81	133	1	52	64.2	21.2	22.1	

growth rate exceeds both SC and US growth rates

Source: Bureau of Labor Statistics

Appendix C: Sumter County Employment by Industry Sector

Industry	NAICS code	Employment		2003-2008 Change		Location Quotient	Competitive Effect	2008 Average Annual Wage (\$)	Projected Growth
		2003	2008	#	%				
Total		38,461	36,885	-1,576	-4.1			30,851	16%

<i>6 star sectors</i>									
Industry	NAICS code	Employment		2003-2008 Change		Location Quotient	Competitive Effect	2008 Average Annual Wage (\$)	Projected Growth
		2003	2008	#	%				
Construction of Buildings	236	674	891	217	32	2.07	184	47,263	AA
Truck Transportation	484	499	682	183	37	1.86	156	38,052	AA

<i>5 star sectors</i>									
Industry	NAICS code	Employment		2003-2008 Change		Location Quotient	Competitive Effect	2008 Average Annual Wage (\$)	Projected Growth
		2003	2008	#	%				
Heavy and Civil Engineering Construction	237	690	836	146	21	3.31	92	37,870	BA
Machinery Manufacturing	333	60	324	264	440	1.04	262	49,191	AA
Merchant Wholesalers, Durable Goods	423	265	518	253	95	0.64	241	47,150	A
Ambulatory Health Care Services	621	863	1,245	382	44	0.84	228	57,136	A
Repair and Maintenance	811	401	412	11	3	1.29	13	31,796	A

<i>4 star sectors</i>		Employment		2003-2008 Change		Location Quotient	Competitive Effect	2008 Average Annual Wage (\$)	Projected Growth
		NAICS code	2003	2008	#				
Industry	NAICS code	2003	2008	#	%	Location Quotient	Competitive Effect	2008 Average Annual Wage (\$)	Projected Growth
Health and Personal Care Stores	446	242	327	85	35	1.24	67	29,668	A
Couriers and Messengers	492	108	122	14	13	0.81	12	36,875	AA
Professional, Scientific, and Technical Services	541	588	705	117	20	0.34	13	38,137	BA
Food Services and Drinking Places	722	2,312	2,868	556	24	1.14	292	11,352	A

<i>3 star or fewer sectors</i>		Employment		2003-2008 Change		Location Quotient	Competitive Effect	2008 Average Annual Wage (\$)	Projected Growth
		NAICS code	2003	2008	#				
Industry	NAICS code	2003	2008	#	%	Location Quotient	Competitive Effect	2008 Average Annual Wage (\$)	Projected Growth
Utilities	221	89	114	25	28	0.78	28	48,718	BA
Wholesale Electronic Markets and Agents and Brokers	425	42	83	41	98	0.37	29	49,935	D
Motor Vehicle and Parts Dealers	441	741	720	-21	-3	1.50	-1	32,051	A
Private Households	814	99	146	47	47	0.96	27	9,913	A
Management of Companies and Enterprises	551	189	216	27	14	0.43	0	57,722	BA
Chemical Manufacturing	325	477	398	-79	-17	1.79	-49	40,423	D
Fabricated Metal Product Manufacturing	332	1,003	799	-204	-20	1.98	-243	44,396	BA
Gasoline Stations	447	379	331	-48	-13	1.49	-33	15,855	A
Nonstore Retailers	454	63	37	-26	-41	0.32	-28	37,576	A
Real Estate	531	167	171	4	2	0.44	-7	24,956	A
Animal Production	112	269	207	-62	-23	3.47	-90	17,567	
Support Activities for Agriculture and Forestry	115	65	62	-3	-5	0.70	-8	63,617	BA
Specialty Trade Contractors	238	1,086	1,015	-71	-7	0.85	-150	31,891	BA
Furniture and Related Product Manufacturing	337	1,210	484	-726	-60	3.84	-533	26,938	D
Merchant Wholesalers, Nondurable Goods	424	263	237	-26	-10	0.44	-32	46,140	BA
Clothing and Clothing Accessories Stores	448	361	359	-2	-1	0.93	-47	16,130	AA
Support Activities for Transportation	488	51	19	-32	-63	0.12	-39	20,613	AA
Warehousing and Storage	493	116	105	-11	-9	0.60	-45	32,846	BA

<i>3 star or fewer sectors</i>		Employment		2003-2008 Change		Location Quotient	Competitive Effect	2008 Average Annual Wage (\$)	Projected Growth
Industry	NAICS code	2003	2008	#	%				
Telecommunications	517	185	139	-46	-25	0.52	-36	48,540	BA
Credit Intermediation and Related Activities	522	790	629	-161	-20	0.88	-143	31,721	BA
Insurance Carriers and Related Activities	524	196	191	-5	-3	0.34	-7	45,083	BA
Educational Services	611	476	499	23	5	0.80	-60	28,909	BA
Personal and Laundry Services	812	447	447	0	0	1.29	-21	19,096	D
Religious, Grantmaking, Civic, Professional, and Similar Organizations	813	152	131	-21	-14	0.37	-29	20,994	A
Printing and Related Support Activities	323	45	34	-11	-24	0.22	-6	25,194	D
Furniture and Home Furnishings Stores	442	212	167	-45	-21	1.21	-37	22,986	BA
Electronics and Appliance Stores	443	69	47	-22	-32	0.32	-27	21,251	BA
Building Material and Garden Equipment and Supplies Dealers	444	383	361	-22	-6	1.10	-40	27,430	BA
Food and Beverage Stores	445	1,062	854	-208	-20	1.13	-217	14,796	BA
Sporting Goods, Hobby, Book, and Music Stores	451	55	43	-12	-22	0.25	-11	13,122	BA
General Merchandise Stores	452	916	878	-38	-4	1.10	-113	17,336	BA
Miscellaneous Store Retailers	453	238	205	-33	-14	0.93	-9	17,506	D
Rental and Leasing Services	532	114	95	-19	-17	0.59	-15	19,476	BA
Nursing and Residential Care Facilities	623	843	812	-31	-4	1.03	-102	20,729	BA
Accommodation	721	215	167	-48	-22	0.34	-59	13,681	BA

Methodology and Sourcing

Projected Growth Grading Scale:

AA=above average

A=average

BA=below average

D=decline

Sectors are rated on 6 factors: 2003-2008 employment growth, 2003-2008 employment growth rate, location quotient, competitive effect, average annual wage, and projected growth.

Stars are based on: 2003-2008 employment growth of 75 or more, 2003-2008 employment growth rate greater than 0% (overall county jobs declined), location quotient of at least 1.25, competitive effect greater than 0, average annual wage greater than \$30,851 (2008 average for all jobs in the county), and average or above average projected growth.

Location Quotient: percentage of employment in the sector in the county divided by the percentage of employment in that sector in the US; gives an indication of how concentrated employment in the sector is in the county; based on 2008 data.

Competitive Effect: based on shift-share analysis; represents the change in employment in the sector in the county after accounting for overall US employment growth and growth/decline in the sector in the US.

Source: Bureau of Labor Statistics; projections based on data from EMSI and SC Department of Commerce.



South Carolina
Department of Commerce
1201 Main Street, Suite 1600
Columbia, SC 29201

(800) 868-7232
(803) 737-0400
www.sccommerce.com