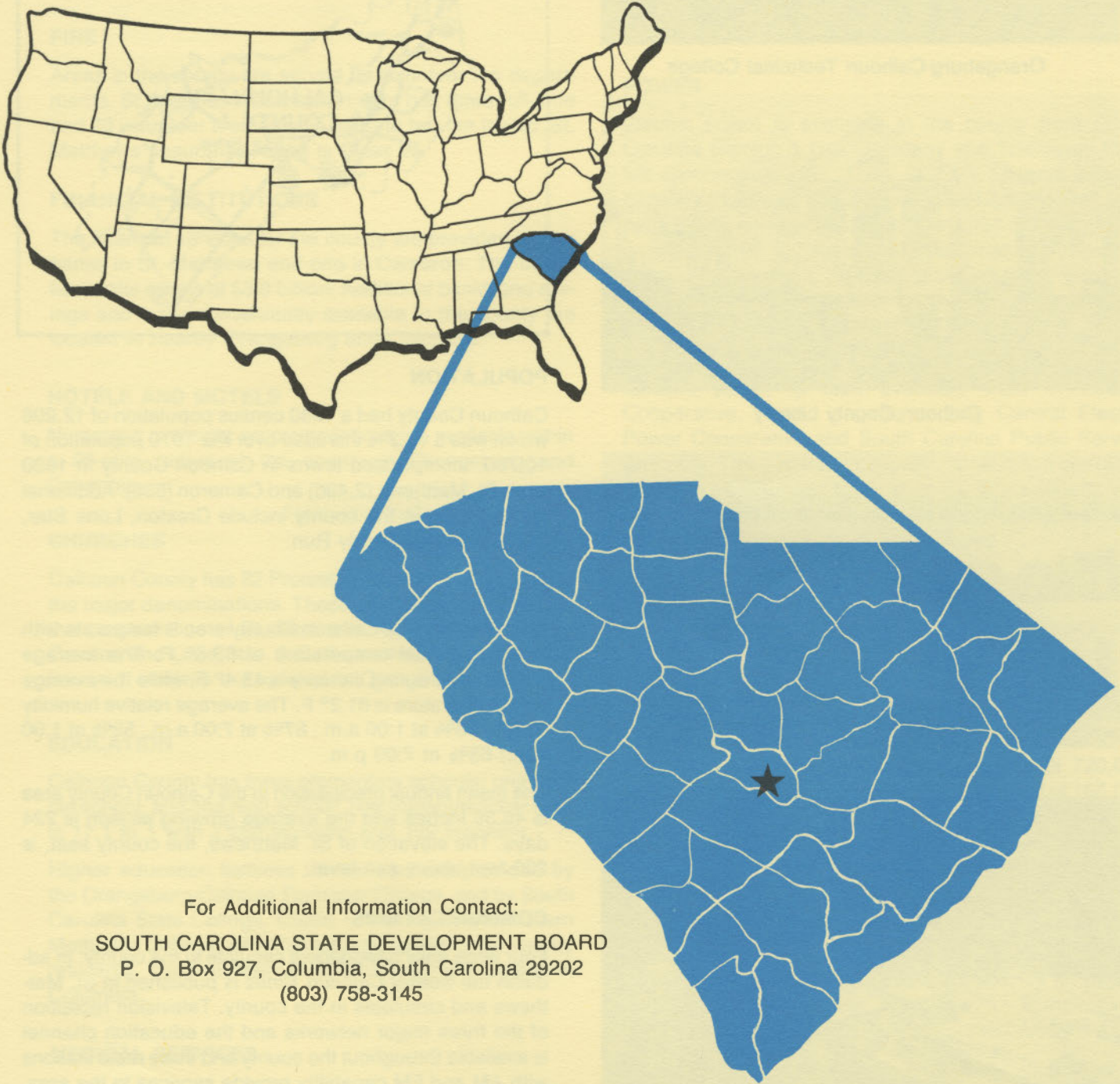


CALHOUN COUNTY

D4925
2.C.15-3
1984
Copy 1

south carolina

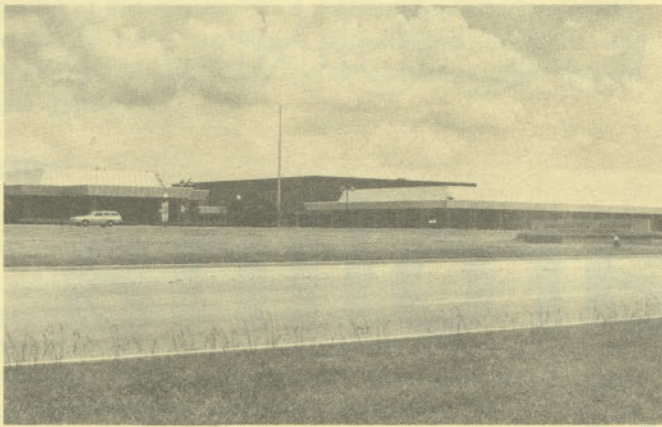


For Additional Information Contact:
SOUTH CAROLINA STATE DEVELOPMENT BOARD
P. O. Box 927, Columbia, South Carolina 29202
(803) 758-3145

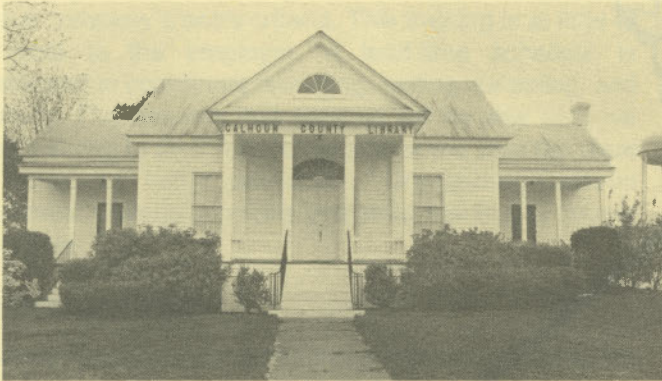
S. C. STATE LIBRARY

AUG 15 1984

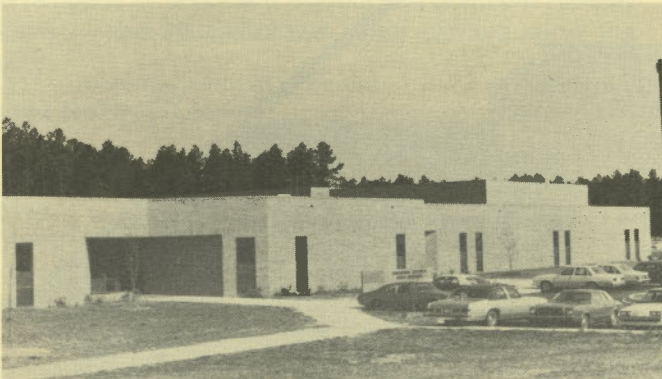
STATE DOCUMENTS



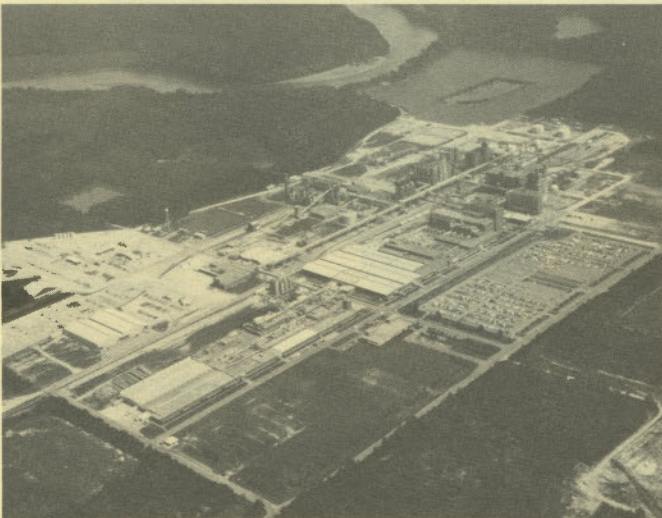
Orangeburg-Calhoun Technical College



Calhoun County Library



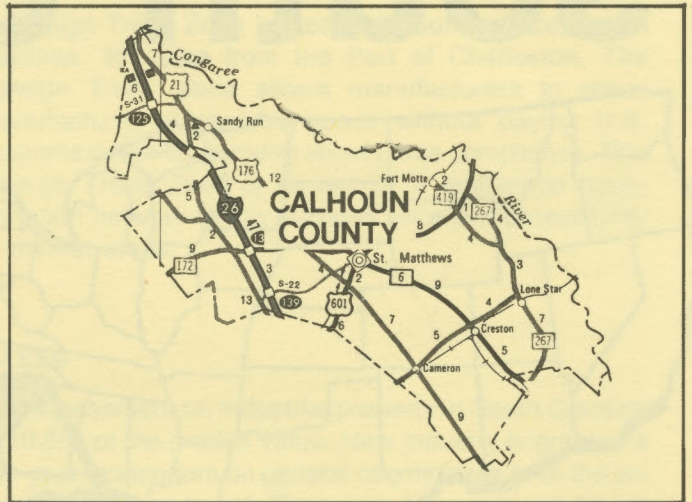
Calhoun County High School



Carolina Eastman

LOCATION

Calhoun County is located in the central section of the state. It is adjacent to the Columbia MSA and the capital of the state. St. Matthews, the county seat, is 34 miles south of Columbia and 81 miles northwest of Charleston, S.C.'s busiest port. St. Matthews is 234 miles east of Atlanta, 714 miles south of New York and 2,757 miles east of San Francisco.



POPULATION

Calhoun County had a 1980 census population of 12,206 which was a 13.2% increase over the 1970 population of 10,780. Incorporated towns in Calhoun County in 1980 were St. Matthews (2,496) and Cameron (536). Additional communities in the county include Creston, Lone Star, Fort Motte and Sandy Run.

CLIMATE

The climate in the Calhoun County area is temperate with a mean annual temperature of 63.5° F. The average temperature during January is 45.4° F, while the average July temperature is 81.2° F. The average relative humidity daily is 83% at 1:00 a.m.; 87% at 7:00 a.m.; 52% at 1:00 p.m.; 65% at 7:00 p.m.

The mean annual precipitation in the Calhoun County area is 46.36 inches and the average growing season is 224 days. The elevation of St. Matthews, the county seat, is 200 feet above sea level.

COMMUNICATIONS

Four large daily newspapers circulate in the county. In addition the weekly *Calhoun Times* is published in St. Matthews and circulates in the county. Television reception of the three major networks and the education channel is available throughout the county and three radio stations with AM and FM capability provide services to the area. Telephone service is provided by the St. Matthews Telephone Company.

GOVERNMENT

Calhoun County is governed by a council whose five members are elected for four-year terms. The communi-

ty of St. Matthews has a council form of government with six council members elected for two-year terms, and the community of Cameron has a mayor/council form of government with four council members elected for four-year terms.

LAW ENFORCEMENT

The county area is under the jurisdiction of the sheriff's department which has three deputies. In addition, St. Matthews maintains an independent police department with four officers.

FIRE

Areas in the county are served by volunteer fire departments. St. Matthews' fire department has three full-time and 20 volunteer firemen who operate two fire trucks. St. Matthews' insurance rating is Class 7.

FINANCIAL INSTITUTIONS

The financial services for the county are provided by two banks in St. Matthews and one in Cameron. The banks have total assets of \$3.0 billion. Additional banks and savings and loans conveniently available to the county are located in nearby Orangeburg and Columbia.

HOTELS AND MOTELS

Numerous overnight accommodations are available within a 25-mile radius of the county in Orangeburg and Columbia.

CHURCHES

Calhoun County has 22 Protestant churches representing the major denominations. These churches are located in the communities of St. Matthews, Cameron, Ft. Motte, Creston and Lone Star. A Catholic church and a Jewish house of worship are located in Orangeburg.

EDUCATION

Calhoun County has three elementary schools; one middle school; and one high school. The student/teacher ratio is 17.1 to 1 with 2,260 students and 132 teachers.

Higher education facilities for the area are provided by the Orangeburg-Calhoun Technical College, and by South Carolina State College, Claflin University and Southern Methodist College, all within easy accessibility for county residents. The University of South Carolina is located in Columbia.

MEDICAL SERVICES

Medical services for the county are provided by the 286-bed Orangeburg Regional Hospital, which is owned and operated by Orangeburg and Calhoun Counties. One of the state's two urological hospitals is located adjacent to Orangeburg Regional. The county has four privately-practicing medical doctors and four privately-practicing dentists.

RECREATION AND CIVIC FACILITIES

Recreation facilities are provided by parks, playgrounds and athletic fields. Hunting, fishing, and water sports are popular pastimes in the county. Lake Marion, 20 miles from St. Matthews, offers landlocked striped bass, crappie, large mouth bass, rock fish and bream fishing. Quail, duck, dove shoots and deer drives are popular with hunters and horseback riding is a favorite form of recreation for county residents. The Calhoun County Country Club has an 18-hole golf course, pool and clubhouse. Additional activities and cultural facilities are offered in nearby Columbia.

POWER

Electric power is available in the county from South Carolina Electric & Gas Company and Tri-County Electric Cooperative. For 1984 SCE&G projects reserve capacity to system coincidental peak of 32%. The company's total generating capacity is 3,959 megawatts. An additional 550 megawatts of coal fired generation is scheduled for 1989. SCE&G plans to have sufficient reserves to meet immediate and future electrical needs of its service area. In addition SCE&G maintains inter-tie connections with four neighboring utilities.

Electric power is also available from Tri-County Cooperative. Power is generated by Central Electric Power Cooperative and South Carolina Public Service Authority. The generation capacity of plants in operation or under construction totals over 3,000 megawatts with 73% produced from coal. Inter-tie connections are maintained with neighboring power supplies.

FUELS

Natural gas is supplied by SCE&G and is available throughout the county.

WATER

Water is supplied to each community by deep wells. St. Matthews has three wells with a capacity of 720,000 gallons per day and an average daily demand of 165,000 gallons. Treated water storage consists of 75,000 gallons in elevated storage and 150,000 gallons in ground storage. Cameron has two wells with a capacity of 172,000 gallons per day and an average daily demand of 35,000 gallons. Treated water storage consists of 75,000 gallons in elevated storage.

Analysis of water supplied in the community (in mg/L):

	St. Matthews	Cameron
Total solids	120	86
Alkalinity	48	36
Calcium	20	10
Hardness	55	30
Iron	.05	.2
pH	5.8	6.6

SEWER

St. Matthews utilizes two seven-acre oxidation ponds to

dispose of the community's wastewater. The two oxidation ponds have maximum capacities of 200,000 and 190,000 gallons per day. The other communities rely on septic tanks.

LABOR

Because labor information may change in this area, a current labor availability report prepared and kept up to date by the S. C. State Development Board will be furnished to prospective manufacturers at their request. The comprehensive report will include sources of recruitable labor, labor force characteristics, work force skill levels, earnings data and other pertinent information. The S. C. State Board for Technical and Comprehensive Education has the resources to recruit and train workers in accordance with a company's entry criteria. This training is at little or no cost to the employer. A lead-time schedule is developed to coordinate recruiting, testing, selecting, and training. This assures that persons will be able to move from training to their respective jobs at the time the plant is ready for initial production. Orangeburg-Calhoun Technical College provides industrial training to county residents.

TRANSPORTATION

Calhoun County is served by three interstates (I-26 which runs through the county, and I-20 & I-95, 30 miles), three United States highways and two South Carolina highways. Two railroads — Seaboard System and Southern Railway System — and 33 authorized motor carriers serve the county.

Freight Delivery Times:

To:	By Rail:	By Truck:
Atlanta	3 days	1 day
Boston	6 days	4 days
Chicago	6 days	3 days
Houston	9 days	3 days
New York	4 days	3 days
St. Louis	6 days	2 days
San Francisco	12 days	5 days

The Columbia Metropolitan Airport is located in Lexington County, 34 miles from St. Matthews, and is easily accessible by interstate to county residents. This airport offers

MAJOR EMPLOYERS

Name	Location	Product or Service	Employees
Cameron Bedding & Mfg. Co., Inc.	Cameron	Mattresses & box springs	32
Carolina Eastman	Sandy Run	Polyester fiber, chemicals, plastics	1,416
Teepak, Inc.	Sandy Run	Casing for meat packers	250
United Technologies	St. Matthews	Auto parts	234

regularly scheduled commercial airline service on Delta, Eastern, United, Bankair and Piedmont and provides a full range of services. Private aircraft utilize the Orangeburg Municipal Airport which has a paved and lighted 4,500-foot runway and offers services of charter; hangars; tiedowns; 80, 100LL and Jet A1 fuel; RBn; Unicom and major airframe and major powerplant repairs.

FOREIGN TRADE ZONE

A Foreign Trade Zone is located in Summerville, South Carolina, 25 miles from the Port of Charleston. The Foreign Trade Zone allows manufacturers to store, manufacture, or process goods without paying U.S. Customs duties or worrying about quota compliance. This Foreign Trade Zone is served by a multimode transportation network which provides excellent accessibility to market areas.

TAXES

The assessment on industrial property in South Carolina is 10.5% of the market value. New industry is granted a five-year moratorium on general county taxes (with the exception of school taxes). The county tax rate is \$13.90 per \$100 of assessed value which is an effective rate (tax liability per \$100 of market value) of \$1.46. The city tax rate in St. Matthews is \$8.00 per \$100 of assessed value, an effective rate of \$.84; and in Cameron the city tax rate is \$2.00 per \$100 of assessed value, an effective rate of \$.21. The state has no tax on a manufacturer's inventories, goods-in-process, raw materials or finished goods. Treatment facilities or equipment of manufacturing plants which control water or air pollution are exempt from all property taxation.

INDUSTRIAL SITES

Industrial sites are available in Calhoun County with a wide range of geographic and topographic features. In all probability, a site that will meet the needs of most industries' requirements has been identified, catalogued, and entered into the State Development Board's Computerized Site Selection System. Detailed site information is available and will be furnished upon request.

