



**SOUTH CAROLINA**  
**STATE DEPARTMENT**  
**OF EDUCATION**

**Report on**  
**Student Dropout Rates**

**2014–15**

**South Carolina Department of Education**

**Molly Spearman**  
**State Superintendent of Education**

**July 2016**

# CONTENTS

---

Introduction.....	1
Adult Education .....	2
Data Highlights	
Dropout Rate for Grades 9–12.....	2
Dropout Percentages by Gender and Ethnicity .....	2
Dropouts by Gender and by Ethnicity .....	3
Dropouts by Grade.....	3
Dropouts by Demographic Category 2014–15 .....	3
Table 1: Total Dropouts as a Percentage of the Total Enrollment for Grades 9–12.....	4
Table 2: Male Dropouts as a Percentage of the Male Enrollment for Grades 9–12.....	6
Table 3: Female Dropouts as a Percentage of the Female Enrollment for Grades 9–12.....	8
Table 4: White Dropouts as a Percentage of the White Enrollment for Grades 9–12.....	10
Table 5: Nonwhite Dropouts as a Percentage of the Nonwhite Enrollment for Grades 9–12.....	12
Table 6: White Female Dropouts as a Percentage of the White Female Enrollment for Grades 9–12.....	14
Table 7: Nonwhite Female Dropouts as a Percentage of the Nonwhite Female Enrollment for Grades 9–12.....	16
Table 8: White Male Dropouts as a Percentage of the White Male Enrollment for Grades 9–12.....	18
Table 9: Nonwhite Male Dropouts as a Percentage of the Nonwhite Male Enrollment for Grades 9–12 .....	20
Glossary .....	22

# INTRODUCTION

---

Since 1971 the South Carolina Department of Education has collected and analyzed data on school dropouts. The *Report on Student Dropout Rates* provides an assessment of the progress made by state and local school districts in their effort to reduce the number of school dropouts and increase the graduation rate.

The annual data collection process employed in South Carolina reports students who leave school during a twelve-month period including those who leave over the summer. The process allows those who reenroll during the collection period and remain in school to be excluded from the count.

The 2014–15 dropout report consists of nine tables. Table 1 contains a comparison of the total number of dropouts with the total enrollment in grades nine through twelve. This comparison called an “event rate” shows the proportion of students who drop out in one year. The resulting percentage may be compared yearly as an indicator of progress. Tables 2 through 9 compare the number of dropouts with enrollment by ethnicity and gender categories in grades nine through twelve.

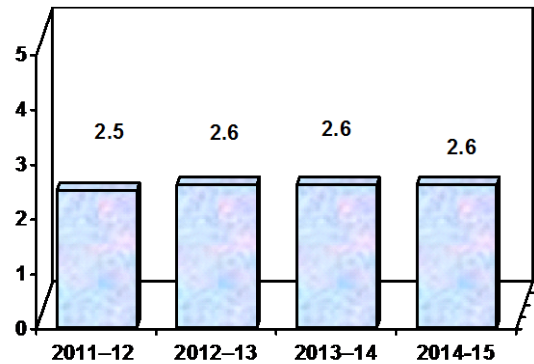
# ADULT EDUCATION

During the 2014–15 school year more than 9,636 students between the ages of seventeen and twenty-one were enrolled in adult education programs in South Carolina. In that year 1,380 of these students between the ages of seventeen and twenty-one earned General Educational Development diplomas (GEDs).

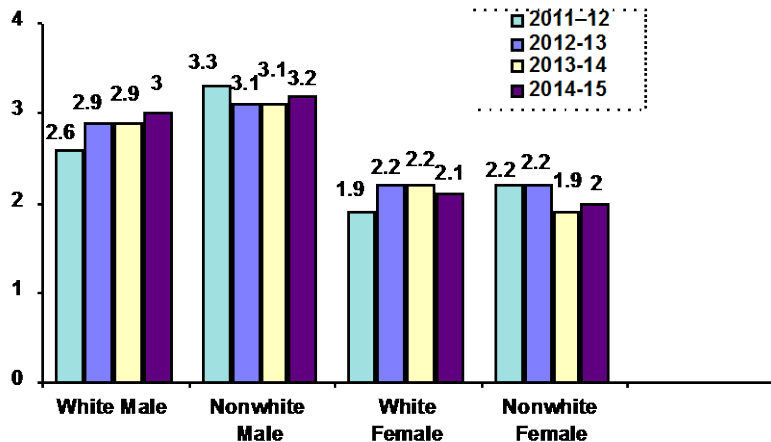
## DATA HIGHLIGHTS

### DROPOUT RATE FOR GRADES 9–12

- From 2013–14 to 2014–15, the dropout rate for grades 9 through 12 declined in 31 of the 84 districts.
- The state dropout rate remained the same during the 2014–15 academic year.



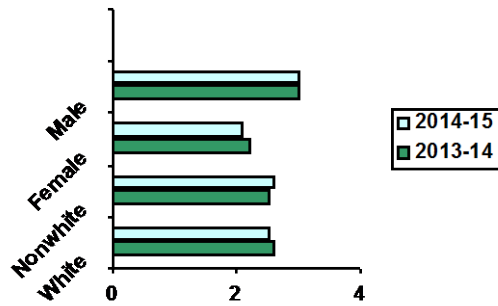
### DROPOUT PERCENTAGES BY GENDER and ETHNICITY



- From 2013–14 to 2014–15, the dropout rate for nonwhite females increased.
- Nonwhite males continue to dropout at the highest rate.

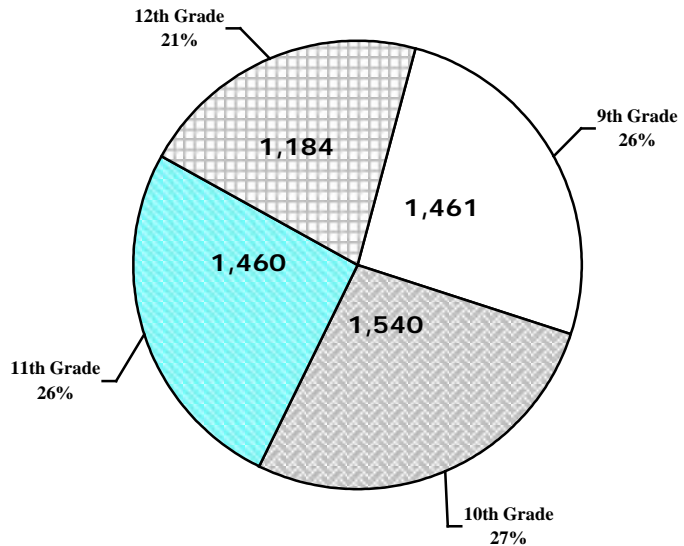
### DROPOUTS BY GENDER AND BY ETHNICITY

- In 2014–15, males dropped out at a rate of 3.0 percent compared to 2.1 percent for females.
- In 2014–15, the dropout rate for nonwhites was 2.6 percent compared to 2.5 percent for whites.



### DROPOUTS BY GRADE

- In 2014–15, approximately 26 percent of all dropouts occurred in the ninth grade.
- Cumulatively in 2014–15, 53 percent of the dropouts had occurred by the tenth-grade year.



### SOUTH CAROLINA DROPOUTS 2014–15

DROPOUTS BY GROUPS	DROPOUTS	ENROLLMENT	DROPOUT RATE
ALL STUDENTS	5,644	220,260	2.6
AMERICAN INDIAN OR ALASKA NATIVE	54	1,257	4.3
ASIAN OR PACIFIC ISLANDER	37	4,419	0.8
BLACK NON-HISPANIC	2,082	80,481	2.6
HISPANIC	456	14,618	3.1
WHITE NON-HISPANIC	3,014	119,461	2.5
STUDENTS WITH DISABILITIES	846	25,621	3.3
LIMITED ENGLISH PROFICIENT	74	6,708	1.1
ECONOMICALLY DISADVANTAGED	4,000	114,949	3.5
MIGRANT	0	60	0.0
MALE	3,397	112,103	3.0
FEMALE	2,247	108,155	2.1

Source: South Carolina Department of Education, *Student Dropout File Collected October 2014–15 and The South Carolina 45-Day Average Membership file collected October 2015–16.*

**TABLE 1**  
**Total Dropouts as a Percentage of the Total Enrollment for Grades 9–12**  
**2011–12 through 2014–15**

DISTRICT	DROPOUTS GRADES 9–12				ENROLLMENT GRADES 9–12				PERCENTAGE			
	11–12	12–13	13–14	14–15	11–12	12–13	13–14	14–15	11–12	12–13	13–14	14–15
ABBEVILLE	27	26	24	13	884	873	859	867	3.1	3.0	2.8	1.5
AIKEN	262	167	189	211	6816	6,816	6,855	7,006	3.8	2.5	2.8	3.0
ALLENDALE	18	18	8	8	342	348	374	369	5.3	5.2	2.1	2.2
ANDERSON 1	32	18	16	22	2721	2,846	2,905	3,032	1.2	0.6	0.6	0.7
ANDERSON 2	35	34	24	29	1074	1,099	1,106	1,129	3.3	3.1	2.2	2.6
ANDERSON 3	18	9	1	3	700	746	772	758	2.6	1.2	0.1	0.4
ANDERSON 4	24	23	21	30	841	841	854	841	2.9	2.7	2.5	3.6
ANDERSON 5	114	115	130	70	3509	3,565	3,506	3,640	3.2	3.2	3.7	1.9
BAMBERG 1	17	13	12	11	400	410	416	433	4.3	3.2	2.9	2.5
BAMBERG 2	4	6	2	4	236	208	193	186	1.7	2.9	1.0	2.2
BARNWELL 19	3	0	2	3	227	216	205	205	1.3	0.0	1.0	1.5
BARNWELL 29	11	6	1	0	303	286	279	274	3.6	2.1	0.4	0.0
BARNWELL 45	16	24	29	26	687	670	669	680	2.3	3.6	4.3	3.8
BEAUFORT	134	213	121	201	5465	5,583	5,811	6,091	2.5	3.8	2.1	3.3
BERKELEY	167	144	164	206	8374	8,432	8,736	9,076	2.0	1.7	1.9	2.3
CALHOUN	1	1	1	3	432	459	475	460	0.2	0.2	0.2	0.7
CHARLESTON	274	170	386	344	11702	12,023	12,308	12,792	2.3	1.4	3.1	2.7
CHEROKEE	66	56	126	50	2521	2,515	2,559	2,565	2.6	2.2	4.9	1.9
CHESTER	45	46	50	72	1529	1,468	1,437	1,417	2.9	3.1	3.5	5.1
CHESTERFIELD	29	25	14	48	2167	2,137	2,205	2,201	1.3	1.2	0.6	2.2
CLARENDON 1	5	2	0	0	207	203	193	200	2.4	1.0	0.0	0.0
CLARENDON 2	31	38	20	25	891	861	841	842	3.5	4.4	2.4	3.0
CLARENDON 3	2	4	2	5	302	329	362	391	0.7	1.2	0.6	1.3
COLLETON	57	52	50	53	1653	1,564	1,622	1,624	3.4	3.3	3.1	3.3
DARLINGTON	12	9	10	8	2962	2,928	3,027	2,992	0.4	0.3	0.3	0.3
DILLON 3	9	5	5	9	421	404	449	476	2.1	1.2	1.1	1.9
DILLON 4	46	46	39	24	1126	1,139	1,144	1,165	4.1	4.0	3.4	2.1
DORCHESTER 2	91	96	83	86	6877	6,984	7,263	7,425	1.3	1.4	1.1	1.2
DORCHESTER 4	15	10	7	8	632	614	619	619	2.4	1.6	1.1	1.3
EDGEFIELD	1	11	29	20	819	780	759	782	0.1	1.4	3.8	2.6
FAIRFIELD	13	23	1	0	795	797	812	813	1.6	2.9	0.1	0.0
FLORENCE 1	91	100	93	88	4506	4,482	4,616	4,641	2.0	2.2	2.0	1.9
FLORENCE 2	7	16	4	3	349	370	352	356	2.0	4.3	1.1	0.8
FLORENCE 3	4	20	49	54	869	853	890	930	0.5	2.3	5.5	5.8
FLORENCE 4	3	3	0	1	215	199	212	204	1.4	1.5	0.0	0.5
FLORENCE 5	14	5	12	12	449	428	431	419	3.1	1.2	2.8	2.9
GEORGETOWN	53	56	48	37	2682	2,683	2,796	2,874	2.0	2.1	1.7	1.3
GREENVILLE	642	590	601	596	21166	21,265	21,769	21,927	3.0	2.8	2.8	2.7
GREENWOOD 50	53	50	39	48	2501	2,516	2,608	2,589	2.1	2.0	1.5	1.9
GREENWOOD 51	10	11	12	16	304	307	307	289	3.3	3.6	3.9	5.5
GREENWOOD 52	11	18	15	16	520	531	530	504	2.1	3.4	2.8	3.2
HAMPTON 1	21	10	5	23	746	707	749	702	2.8	1.4	0.7	3.3
HAMPTON 2	3	6	7	8	285	274	239	234	1.1	2.2	2.9	3.4
HORRY	372	328	300	350	11104	11,403	11,985	12,422	3.4	2.9	2.5	2.8
JASPER	16	41	46	14	752	727	681	694	2.1	5.6	6.8	2.0
KERSHAW	58	59	51	32	3039	3,069	3,044	3,105	1.9	1.9	1.7	1.0
LANCASTER	101	69	87	123	3402	3,392	3,538	3,567	3.0	2.0	2.5	3.4
LAURENS 55	64	66	49	76	1535	1,627	1,661	1,640	4.2	4.1	3.0	4.6
LAURENS 56	21	20	21	28	855	859	880	882	2.5	2.3	2.4	3.2

**TABLE 1**  
**Total Dropouts as a Percentage of the Total Enrollment for Grades 9–12**  
**2011–12 through 2014–15**

DISTRICT	DROPOUTS GRADES 9–12				ENROLLMENT GRADES 9–12				PERCENTAGE				
	11–12	12–13	13–14	14–15	11–12	12–13	13–14	14–15	11–12	12–13	13–14	14–15	
LEE	7	7	3	17	593	583	641	671	1.2	1.2	0.5	2.5	
LEXINGTON 1	81	99	78	78	6764	7,024	7,111	7,254	1.2	1.4	1.1	1.1	
LEXINGTON 2	50	65	79	29	2357	2,371	2,375	2,347	2.1	2.7	3.3	1.2	
LEXINGTON 3	13	17	13	16	525	510	510	550	2.5	3.3	2.5	2.9	
LEXINGTON 4	40	15	10	29	908	898	893	879	4.4	1.7	1.1	3.3	
LEXINGTON 5	66	58	49	67	5196	5,225	5,301	5,456	1.3	1.1	0.9	1.2	
MCCORMICK	2	8	3	3	221	205	210	194	0.9	3.9	1.4	1.5	
MARION 1*													
MARION 2*													
MARION 7*													
MARION 10	49	38	31	27	1471	1,450	1,390	1,358	3.3	2.6	2.2	2.0	
MARLBORO	45	41	50	29	1201	1,160	1,197	1,189	3.7	3.5	4.2	2.4	
NEWBERRY	24	24	43	54	1696	1,750	1,780	1,770	1.4	1.4	2.4	3.1	
OCONEE	77	113	83	123	3029	3,017	3,024	2,989	2.5	3.7	2.7	4.1	
ORANGEBURG 3	29	33	20	37	801	784	789	809	3.6	4.2	2.5	4.6	
ORANGEBURG 4	28	18	23	37	1114	1,132	1,119	1,101	2.5	1.6	2.1	3.4	
ORANGEBURG 5	38	30	28	34	1715	1,705	1,798	1,798	2.2	1.8	1.6	1.9	
PICKENS	162	192	179	134	4885	4,858	4,968	4,972	3.3	4.0	3.6	2.7	
RICHLAND 1	268	189	155	199	6374	6,409	6,411	6,471	4.2	2.9	2.4	3.1	
RICHLAND 2	127	136	133	120	7907	7,994	8,240	8,250	1.6	1.7	1.6	1.5	
SALUDA	11	12	9	15	585	573	579	604	1.9	2.1	1.6	2.5	
SPARTANBURG 1	31	43	24	19	1478	1,511	1,549	1,601	2.1	2.8	1.5	1.2	
SPARTANBURG 2	86	70	51	46	2989	2,982	2,998	3,009	2.9	2.3	1.7	1.5	
SPARTANBURG 3	19	24	19	22	905	924	939	942	2.1	2.6	2.0	2.3	
SPARTANBURG 4	7	2	8	8	847	802	815	836	0.8	0.2	1.0	1.0	
SPARTANBURG 5	54	47	36	32	2258	2,275	2,314	2,339	2.4	2.1	1.6	1.4	
SPARTANBURG 6	73	75	64	49	3196	3,228	3,244	3,277	2.3	2.3	2.0	1.5	
SPARTANBURG 7	78	43	36	39	1889	1,854	1,796	1,859	4.1	2.3	2.0	2.1	
SUMTER	102	123	105	132	4,628	4,602	4,740	4,768	2.2	2.7	2.2	2.8	
UNION	38	33	43	49	1215	1,205	1,158	1,132	3.1	2.7	3.7	4.3	
WILLIAMSBURG	1	0	16	4	1332	1,238	1,277	1,260	0.1	0.0	1.3	0.3	
YORK 1	24	36	32	25	1428	1,472	1,577	1,601	1.7	2.4	2.0	1.6	
YORK 2	40	24	25	10	1989	1,994	2,065	2,138	2.0	1.2	1.2	0.5	
YORK 3	163	145	143	153	5102	5,161	5,140	5,227	3.2	2.8	2.8	2.9	
YORK 4	39	42	55	30	3183	3,462	3,610	3,863	1.2	1.2	1.5	0.8	
SC PUBLIC CHARTER	234	856	985	859	4834	5,706	6,608	7,206	4.8	15.0	14.9	11.9	
DEAF AND BLIND	3	1	3	1	130	120	112	104	2.3	0.8	2.7	1.0	
JOHN DELA HOWE	0	0	0	1				23					
STATE TOTAL	5232	5537	5,640	5,644	209282	211,480	216,818	220,260	STATE AVE.	2.5	2.6	2.6	2.6

\*During the 2011–12 school year, Marion 1, Marion 2, and Marion 7 consolidated to form Marion 10.

Note: Enrollment by ethnicity/gender in 2011–12 and 2012–13 will not add to total enrollment in this table due to missing ethnicity/gender codes for some students.

Note: Enrollment totals included

Source: South Carolina Department of Education, "School Dropout Listings" 2011–12 through 2014–15; precode file 2011–12 through 2014–15. Student Dropout File collected October 2015 and the South Carolina 45-Day Average Membership file collected October 2015.

**TABLE 2**  
**Male Dropouts as a Percentage of the Male Enrollment for Grades 9–12**  
**2011–12 through 2014–15**

DISTRICT	DROPOUTS GRADES 9–12				ENROLLMENT GRADES 9–12				PERCENTAGE			
	11–12	12–13	13–14	14–15	11–12	12–13	13–14	14–15	11–12	12–13	13–14	14–15
ABBEVILLE	22	20	19	9	454	459	461	459	4.8	4.4	4.1	2.0
AIKEN	168	96	112	122	3,526	3,511	3,557	3,626	4.8	2.7	3.1	3.4
ALLENDALE	12	12	5	5	188	188	204	203	6.4	6.4	2.5	2.5
ANDERSON 1	19	9	10	15	1,411	1,473	1,539	1,632	1.3	0.6	0.6	0.9
ANDERSON 2	16	21	10	16	537	566	590	613	3.0	3.7	1.7	2.6
ANDERSON 3	12	3	1	2	351	397	415	395	3.4	0.8	0.2	0.5
ANDERSON 4	11	13	10	18	457	455	465	451	2.4	2.9	2.2	4.0
ANDERSON 5	64	75	73	42	1,836	1,803	1,745	1,823	3.5	4.2	4.2	2.3
BAMBERG 1	9	8	8	7	220	228	242	243	4.1	3.5	3.3	2.9
BAMBERG 2	1	3	2	4	134	107	87	85	0.7	2.8	2.3	4.7
BARNWELL 19	2	0	1	2	108	105	98	99	1.9	0.0	1.0	2.0
BARNWELL 29	6	5	1	0	170	160	147	139	3.5	3.1	0.7	0.0
BARNWELL 45	11	13	19	17	347	341	334	352	3.2	3.8	5.7	4.8
BEAUFORT	79	132	78	130	2,811	2,851	2,934	3,035	2.8	4.6	2.7	4.3
BERKELEY	92	91	101	130	4,406	4,432	4,467	4,615	2.1	2.1	2.3	2.8
CALHOUN	1	0	1	3	224	224	242	227	0.4	0.0	0.4	1.3
CHARLESTON	165	101	263	223	5,945	6,081	6,161	6,391	2.8	1.7	4.3	3.5
CHEROKEE	41	32	81	32	1,287	1,255	1,295	1,317	3.2	2.5	6.3	2.4
CHESTER	32	29	24	36	804	750	735	725	4.0	3.9	3.3	5.0
CHESTERFIELD	14	13	6	30	1,084	1,062	1,089	1,076	1.3	1.2	0.6	2.8
CLARENDON 1	1	2	0	0	93	98	98	109	1.1	2.0	0.0	0.0
CLARENDON 2	19	23	14	19	449	453	432	428	4.2	5.1	3.2	4.4
CLARENDON 3	2	3	0	2	155	174	179	203	1.3	1.7	0.0	1.0
COLLETON	36	33	29	36	809	776	803	807	4.4	4.3	3.6	4.5
DARLINGTON	9	8	8	6	1,503	1,455	1,506	1,491	0.6	0.5	0.5	0.4
DILLON 3	1		0	9	199	184	203	222	0.5	1.1	0.0	4.1
DILLON 4	21	27	25	18	557	570	573	569	3.8	4.7	4.4	3.2
DORCHESTER 2	54	58	51	56	3,526	3,585	3,698	3,726	1.5	1.6	1.4	1.5
DORCHESTER 4	11	8	3	5	316	315	326	321	3.5	2.5	0.9	1.6
EDGEFIELD	1	8	20	15	429	418	379	393	0.2	1.9	5.3	3.8
FAIRFIELD	10	18	0	0	380	396	390	405	2.6	4.5	0.0	0.0
FLORENCE 1	50	72	61	49	2,270	2,263	2,321	2,315	2.2	3.2	2.6	2.1
FLORENCE 2	5	10	3	3	172	197	210	212	2.9	5.1	1.4	1.4
FLORENCE 3	3	13	29	32	424	437	451	462	0.7	3.0	6.4	6.9
FLORENCE 4	1	1	0	0	117	106	113	115	0.9	0.9	0.0	0.0
FLORENCE 5	9	5	7	8	238	218	221	215	3.8	2.3	3.2	3.7
GEORGETOWN	29	34	34	22	1,400	1,395	1,466	1,540	2.1	2.4	2.3	1.4
GREENVILLE	411	357	387	404	10,853	10,951	11,157	11,228	3.8	3.3	3.5	3.6
GREENWOOD 50	37	36	13	26	1,251	1,259	1,332	1,346	3.0	2.9	1.0	1.9
GREENWOOD 51	7	9	8	13	168	163	161	143	4.2	5.5	5.0	9.1
GREENWOOD 52	6	11	10	11	273	281	277	260	2.2	3.9	3.6	4.2
HAMPTON 1	11	7	4	18	391	376	369	327	2.8	1.9	1.1	5.5
HAMPTON 2	3	5	4	7	145	136	113	109	2.1	3.7	3.5	6.4
HORRY	204	204	194	207	5,735	5,779	6,072	6,268	3.6	3.5	3.2	3.3
JASPER	8	24	29	12	386	383	371	352	2.1	6.3	7.8	3.4
KERSHAW	41	36	33	22	1,573	1,628	1,615	1,656	2.6	2.2	2.0	1.3
LANCASTER	60	43	57	75	1,822	1,764	1,802	1,821	3.3	2.4	3.2	4.1
LAURENS 55	32	40	29	51	818	820	844	859	3.9	4.9	3.4	5.9
LAURENS 56	11	13	10	18	422	431	446	452	2.6	3.0	2.2	4.0
LEE	5	4	3	10	284	265	297	326	1.8	1.5	1.0	3.1
LEXINGTON 1	47	57	45	49	3,444	3,627	3,608	3,701	1.4	1.6	1.2	1.3



**TABLE 2**  
**Male Dropouts as a Percentage of the Male Enrollment for Grades 9–12**  
**2011–12 through 2014–15**

DISTRICT	DROPOUTS GRADES 9–12				ENROLLMENT GRADES 9–12				PERCENTAGE				
	11–12	12–13	13–14	14-15	11–12	12–13	13–14	14-15	11–12	12–13	13–14	14-15	
LEXINGTON 2	28	42	46	16	1217	1,199	1,207	1,226	2.3	3.5	3.8	1.3	
LEXINGTON 3	5	9	7	12	266	262	262	269	1.9	3.4	2.7	4.5	
LEXINGTON 4	25	11	7	22	472	478	482	459	5.3	2.3	1.5	4.8	
LEXINGTON 5	43	38	25	43	2,602	2,625	2,654	2,720	1.7	1.4	0.9	1.6	
MCCORMICK	1	5	2	3	107	108	116	101	0.9	4.6	1.7	3.0	
MARION 1*													
MARION 2*													
MARION 7*													
MARION 10	33	21	20	16	752	752	718	712	4.4	2.8	2.8	2.2	
MARLBORO	24	21	30	12	639	614	622	604	3.8	3.4	4.8	2.0	
NEWBERRY	19	18	26	38	875	919	937	903	2.2	2.0	2.8	4.2	
OCONEE	48	70	46	66	1,555	1,571	1,555	1,552	3.1	4.5	3.0	4.3	
ORANGEBURG 3	19	24	17	23	414	381	380	392	4.6	6.3	4.5	5.9	
ORANGEBURG 4	15	10	15	25	560	595	615	590	2.7	1.7	2.4	4.2	
ORANGEBURG 5	24	19	15	21	854	850	923	908	2.8	2.2	1.6	2.3	
PICKENS	93	125	107	90	2,524	2,521	2,571	2,560	3.7	5.0	4.2	3.5	
RICHLAND 1	175	110	103	113	3194	3,187	3,207	3,234	5.5	3.5	3.2	3.5	
RICHLAND 2	63	94	79	75	4035	4,041	4,169	4,168	1.6	2.3	1.9	1.8	
SALUDA	7	8	1	10	312	303	306	318	2.2	2.6	0.3	3.1	
SPARTANBURG 1	20	23	14	11	775	780	810	819	2.6	2.9	1.7	1.3	
SPARTANBURG 2	50	39	38	23	1605	1,602	1,605	1,609	3.1	2.4	2.4	1.4	
SPARTANBURG 3	9	19	13	12	485	476	473	466	1.9	4.0	2.7	2.6	
SPARTANBURG 4	4	2	2	5	438	418	432	457	0.9	0.5	0.5	1.1	
SPARTANBURG 5	30	27	21	22	1182	1,206	1,233	1,218	2.5	2.2	1.7	1.8	
SPARTANBURG 6	37	46	47	35	1634	1,591	1,560	1,600	2.3	2.9	3.0	2.2	
SPARTANBURG 7	43	20	20	26	967	956	888	947	4.4	2.1	2.3	2.7	
SUMTER	61	70	77	78	2273	2,342	2,387	2,452	2.7	3.0	3.2	3.2	
UNION	19	20	30	29	636	620	604	584	3.0	3.2	5.0	5.0	
WILLIAMSBURG	1	0	9	1	700	633	658	642	0.1	0.0	1.4	0.2	
YORK 1	16	19	18	16	694	724	769	803	2.3	2.6	2.3	2.0	
YORK 2	24	15	21	6	1012	1,014	1,067	1,105	2.4	1.5	2.0	0.5	
YORK 3	105	92	94	100	2649	2,619	2,603	2,632	4.0	3.5	3.6	3.8	
YORK 4	29	27	33	17	1676	1,782	1,835	1,931	1.7	1.5	1.8	0.9	
SC PUBLIC CHARTER	119	355	429	384	2009	2,407	2,879	3,194	5.9	14.7	14.9	12.0	
DEAF AND BLIND	1	0	3	0	71	62	61	49	1.4	0.0	4.9	0.0	
JOHN DELA HOWE				1				18				5.6	
STATE TOTAL	3112	3246	3,350	3,397	107388	108227	110495	112,103	STATE AVE.	2.9	3.0	3.0	3.0

\*During the 2011–12 school year, Marion 1, Marion 2, and Marion 7 consolidated to form Marion 10.

Note: Enrollment by ethnicity/gender in 2011–12 and 2012–13 will not add to total enrollment in this table due to missing ethnicity/gender codes for some students.

Note: Enrollment totals included

Source: South Carolina Department of Education, "School Dropout Listings" 2011–12 through 2014–15; precode file 2011–12 through 2014–15. Student Dropout File collected October 2015 and the South Carolina 45-Day Average Membership file collected October 2015.

**TABLE 3**  
**Female Dropouts as a Percentage of the Female Enrollment for Grades 9–12**  
**2011–12 through 2014–15**

DISTRICT	DROPOUTS GRADES 9–12				ENROLLMENT GRADES 9–12				PERCENTAGE			
	11–12	12–13	13–14	14–15	11–12	12–13	13–14	14–15	11–12	12–13	13–14	14–15
ABBEVILLE	5	6	5	4	430	414	398	408	1.2	1.4	1.3	1.0
AIKEN	94	71	77	89	3290	3,305	3,298	3,380	2.9	2.1	2.3	2.6
ALLENDALE	6	6	3	3	154	160	170	166	3.9	3.8	1.8	1.8
ANDERSON 1	13	9	6	7	1310	1,373	1,366	1,400	1.0	0.7	0.4	0.5
ANDERSON 2	19	13	14	13	537	533	516	516	3.5	2.4	2.7	2.5
ANDERSON 3	6	6	0	1	349	349	357	363	1.7	1.7	0.0	0.3
ANDERSON 4	13	10	11	12	384	386	389	390	3.4	2.6	2.8	3.1
ANDERSON 5	50	40	57	28	1673	1,762	1,761	1,817	3.0	2.3	3.2	1.5
BAMBERG 1	8	5	4	4	180	182	174	190	4.4	2.7	2.3	2.1
BAMBERG 2	3	3	0	0	102	101	106	101	2.9	3.0	0.0	0.0
BARNWELL 19	1	0	1	1	119	111	107	106	0.8	0.0	0.9	0.9
BARNWELL 29	5	1	0	0	133	126	132	135	3.8	0.8	0.0	0.0
BARNWELL 45	5	11	10	9	340	329	335	328	1.5	3.3	3.0	2.7
BEAUFORT	55	81	43	71	2654	2,732	2,877	3,056	2.1	3.0	1.5	2.3
BERKELEY	75	53	63	76	3968	3,999	4,269	4,461	1.9	1.3	1.5	1.7
CALHOUN	0	1	0	0	208	235	233	233	0.0	0.4	0.0	0.0
CHARLESTON	109	69	123	121	5756	5,942	6,147	6,400	1.9	1.2	2.0	1.9
CHEROKEE	25	24	45	18	1234	1,260	1,264	1,248	2.0	1.9	3.6	1.4
CHESTER	13	17	26	36	725	718	702	692	1.8	2.4	3.7	5.2
CHESTERFIELD	15	12	8	18	1083	1,075	1,116	1,125	1.4	1.1	0.7	1.6
CLARENDON 1	4	0	0	0	114	105	95	91	3.5	0.0	0.0	0.0
CLARENDON 2	12	15	6	6	442	408	409	414	2.7	3.7	1.5	1.4
CLARENDON 3	0	1	2	3	147	155	183	188	0.0	0.6	1.1	1.6
COLLETON	21	19	21	17	843	788	819	817	2.5	2.4	2.6	2.1
DARLINGTON	3	1	2	2	1459	1,473	1,521	1,501	0.2	0.1	0.1	0.1
DILLON 3	8	3	5	0	222	220	246	254	3.6	1.4	2.0	0.0
DILLON 4	25	19	14	6	569	569	571	596	4.4	3.3	2.5	1.0
DORCHESTER 2	37	38	32	30	3351	3,399	3,565	3,699	1.1	1.1	0.9	0.8
DORCHESTER 4	4	2	4	3	316	299	293	298	1.3	0.7	1.4	1.0
EDGEFIELD	0	3	9	5	390	362	380	389	0.0	0.8	2.4	1.3
FAIRFIELD	3	5	1	0	415	401	422	408	0.7	1.2	0.2	0.0
FLORENCE 1	41	28	32	39	2236	2,219	2,295	2,326	1.8	1.3	1.4	1.7
FLORENCE 2	2	6	1	0	177	173	142	144	1.1	3.5	0.7	0.0
FLORENCE 3	1	7	20	22	440	416	439	468	0.2	1.7	4.6	4.7
FLORENCE 4	2	2	0	1	97	92	99	89	2.1	2.2	0.0	1.1
FLORENCE 5	5	0	5	4	211	210	210	204	2.4	0.0	2.4	2.0
GEORGETOWN	24	22	14	15	1282	1,288	1,330	1,334	1.9	1.7	1.1	1.1
GREENVILLE	231	233	214	192	10313	10,314	10,612	10,699	2.2	2.3	2.0	1.8
GREENWOOD 50	16	14	26	22	1250	1,257	1,276	1,243	1.3	1.1	2.0	1.8
GREENWOOD 51	3	2	4	3	136	144	146	146	2.2	1.4	2.7	2.1
GREENWOOD 52	5	7	5	5	247	250	253	244	2.0	2.8	2.0	2.0
HAMPTON 1	10	3	1	5	355	331	380	375	2.8	0.9	0.3	1.3
HAMPTON 2	0	1	3	1	139	138	126	125	0.0	0.7	2.4	0.8
HORRY	168	124	106	143	5369	5,624	5,913	6,154	3.1	2.2	1.8	2.3
JASPER	8	17	17	2	366	344	310	342	2.2	4.9	5.5	0.6
KERSHAW	17	23	18	10	1466	1,441	1,429	1,449	1.2	1.6	1.3	0.7
LANCASTER	41	26	30	48	1580	1,628	1,736	1,746	2.6	1.6	1.7	2.7
LAURENS 55	32	26	20	25	717	807	817	781	4.5	3.2	2.4	3.2
LAURENS 56	10	7	11	10	433	428	434	430	2.3	1.6	2.5	2.3
LEE	2	3	0	7	309	318	344	345	0.6	0.9	0.0	2.0
LEXINGTON 1	34	42	33	29	3320	3,397	3,503	3,553	1.0	1.2	0.9	0.8
LEXINGTON 2	22	23	33	13	1140	1,172	1,168	1,121	1.9	2.0	2.8	1.2

**TABLE 3**  
**Female Dropouts as a Percentage of the Female Enrollment for Grades 9–12**  
**2011–12 through 2014–15**

DISTRICT	DROPOUTS GRADES 9–12				ENROLLMENT GRADES 9–12				PERCENTAGE				
	11–12	12–13	13–14	14–15	11–12	12–13	13–14	14–15	11–12	12–13	13–14	14–15	
LEXINGTON 3	8	8	6	4	259	248	248	281	3.1	3.2	2.4	1.4	
LEXINGTON 4	15	4	3	7	436	420	411	420	3.4	1.0	0.7	1.7	
LEXINGTON 5	23	20	24	24	2594	2,600	2,647	2,736	0.9	0.8	0.9	0.9	
MCCORMICK	1	3	1	0	113	97	94	93	0.9	3.1	1.1	0.0	
MARION 1*													
MARION 2*													
MARION 7*													
MARION 10	16	17	11	11	719	698	672	646	2.2	2.4	1.6	1.7	
MARLBORO	21	20	20	17	562	546	575	585	3.7	3.7	3.5	2.9	
NEWBERRY	5	6	17	16	821	831	843	867	0.6	0.7	2.0	1.8	
OCONEE	29	43	37	57	1474	1,446	1,469	1,437	2.0	3.0	2.5	4.0	
ORANGEBURG 3	10	9	3	14	387	403	409	417	2.6	2.2	0.7	3.4	
ORANGEBURG 4	13	8	8	12	554	537	504	511	2.3	1.5	1.6	2.3	
ORANGEBURG 5	14	11	13	13	861	855	875	890	1.6	1.3	1.5	1.5	
PICKENS	69	67	72	44	2361	2,337	2,397	2,412	2.9	2.9	3.0	1.8	
RICHLAND 1	93	79	52	86	3180	3,222	3,204	3,237	2.9	2.5	1.6	2.7	
RICHLAND 2	64	42	54	45	3871	3,953	4,071	4,082	1.7	1.1	1.3	1.1	
SALUDA	4	4	8	5	273	270	273	286	1.5	1.5	2.9	1.7	
SPARTANBURG 1	11	20	10	8	703	731	739	782	1.6	2.7	1.4	1.0	
SPARTANBURG 2	36	31	13	23	1384	1,380	1,393	1,400	2.6	2.2	0.9	1.6	
SPARTANBURG 3	10	5	6	10	420	448	466	476	2.4	1.1	1.3	2.1	
SPARTANBURG 4	3	0	6	3	409	384	383	379	0.7	0.0	1.6	0.8	
SPARTANBURG 5	24	20	15	10	1076	1,069	1,081	1,121	2.2	1.9	1.4	0.9	
SPARTANBURG 6	36	29	17	14	1562	1,637	1,684	1,677	2.3	1.8	1.0	0.8	
SPARTANBURG 7	35	23	16	13	922	898	908	912	3.8	2.6	1.8	1.4	
SUMTER	41	53	28	54	2354	2,260	2,353	2,316	1.7	2.3	1.2	2.3	
UNION	19	13	13	20	579	585	554	548	3.3	2.2	2.3	3.6	
WILLIAMSBURG	0	0	7	3	632	605	619	618	0.0	0.0	1.1	0.5	
YORK 1	8	17	14	9	734	748	808	798	1.1	2.3	1.7	1.1	
YORK 2	16	9	4	4	977	980	998	1,033	1.6	0.9	0.4	0.4	
YORK 3	58	53	49	53	2453	2,542	2,537	2,595	2.4	2.1	1.9	2.0	
YORK 4	10	15	22	13	1507	1,680	1,775	1,932	0.7	0.9	1.2	0.7	
SC PUBLIC CHARTER	115	501	556	475	2825	3,299	3,729	4,012	4.1	15.2	14.9	11.8	
DEAF AND BLIND	2	1	0	1	59	58	51	55	3.4	1.7	0.0	1.8	
JOHN DELA HOWE				0				5				0.0	
STATE TOTAL	2120	2291	2290	2,247	101871	103228	106315	108,155	STATE AVE.	2.1	2.2	2.2	2.1

\*During the 2011–12 school year, Marion 1, Marion 2, and Marion 7 consolidated to form Marion 10.

Note: Enrollment by ethnicity/gender in 2011–12 and 2012–13 will not add to total enrollment in this table due to missing ethnicity/gender codes for some students.

Note: Enrollment totals included

Source: South Carolina Department of Education, “School Dropout Listings” 2011–12 through 2014–15; precode file 2011–12 through 2014–15. Student Dropout File collected October 2015 and the South Carolina 45-Day Average Membership file collected October 2015.

**TABLE 4**  
**White Dropouts as a Percentage of the White Enrollment for Grades 9–12**  
**2011–12 through 2014–15**

DISTRICT	DROPOUTS GRADES 9–12				ENROLLMENT GRADES 9–12				PERCENTAGE			
	11–12	12–13	13–14	14-15	11–12	12–13	13–14	14-15	11–12	12–13	13–14	14-15
ABBEVILLE	14	16	13	5	550	542	542	544	2.5	3.0	2.4	0.9
AIKEN	127	73	94	112	3932	3,898	3,813	3,842	3.2	1.9	2.5	2.9
ALLENDALE	0	1	0	0	4	4	5	6	0.0	25.0	0.0	0.0
ANDERSON 1	30	17	13	22	2340	2,433	2,457	2,570	1.3	0.7	0.5	0.9
ANDERSON 2	32	24	19	18	850	867	879	910	3.8	2.8	2.2	2.0
ANDERSON 3	17	9	0	3	603	633	659	632	2.8	1.4	0.0	0.5
ANDERSON 4	18	19	18	23	634	644	657	633	2.8	3.0	2.7	3.6
ANDERSON 5	66	66	59	36	1996	2,034	1,977	2,021	3.3	3.2	3.0	1.8
BAMBERG 1	8	6	3	5	152	161	164	178	5.3	3.7	1.8	2.8
BAMBERG 2	0	0	0	0	1	2	4	2	0.0	0.0	0.0	0.0
BARNWELL 19	3	0	0	2	45	54	46	46	6.7	0.0	0.0	4.3
BARNWELL 29	3	2	0	0	141	137	129	128	2.1	1.5	0.0	0.0
BARNWELL 45	2	8	14	16	342	336	335	316	0.6	2.4	4.2	5.1
BEAUFORT	51	70	44	66	2661	2,713	2,785	2,791	1.9	2.6	1.6	2.4
BERKELEY	98	69	85	107	4433	4,489	4,582	4,692	2.2	1.5	1.9	2.3
CALHOUN	0	1	0	1	80	83	92	98	0.0	1.2	0.0	1.0
CHARLESTON	81	49	97	98	5839	6,128	6,304	6,602	1.4	0.8	1.5	1.5
CHEROKEE	47	42	86	40	1703	1,689	1,725	1,691	2.8	2.5	5.0	2.4
CHESTER	26	28	18	29	762	734	730	713	3.4	3.8	2.5	4.1
CHESTERFIELD	16	12	7	30	1204	1,193	1,209	1,172	1.3	1.0	0.6	2.6
CLARENDON 1	0	0	0	0	3	6	4	4	0.0	0.0	0.0	0.0
CLARENDON 2	13	13	6	8	275	245	216	204	4.7	5.3	2.8	3.9
CLARENDON 3	1	3	1	4	218	242	262	288	0.5	1.2	0.4	1.4
COLLETON	24	31	28	28	733	717	754	756	3.3	4.3	3.7	3.7
DARLINGTON	6	2	3	2	1293	1,255	1,298	1,271	0.5	0.2	0.2	0.2
DILLON 3	6	4	3	5	238	240	281	296	2.5	1.7	1.1	1.7
DILLON 4	17	9	10	11	303	326	338	343	5.6	2.8	3.0	3.2
DORCHESTER 2	49	53	44	46	4117	4,124	4,176	4,253	1.2	1.3	1.1	1.1
DORCHESTER 4	5	6	3	5	218	223	231	232	2.3	2.7	1.3	2.2
EDGEFIELD	1	6	11	8	351	328	302	317	0.3	1.8	3.6	2.5
FAIRFIELD	1	6	1	0	108	113	112	100	0.9	5.3	0.9	0.0
FLORENCE 1	39	37	30	36	1949	1,922	1,986	1,946	2.0	1.9	1.5	1.8
FLORENCE 2	3	13	3	1	174	183	173	171	1.7	7.1	1.7	0.6
FLORENCE 3	2	6	12	21	260	252	268	253	0.8	2.4	4.5	8.3
FLORENCE 4	1	1	0	0	15	31	23	23	6.7	3.2	0.0	0.0
FLORENCE 5	12	5	8	8	304	294	282	292	3.9	1.7	2.8	2.7
GEORGETOWN	26	30	24	24	1379	1,365	1,439	1,466	1.9	2.2	1.7	1.6
GREENVILLE	284	291	307	292	12961	13,075	13,217	13,080	2.2	2.2	2.3	2.2
GREENWOOD 50	18	22	18	18	1250	1,265	1,268	1,236	1.4	1.7	1.4	1.5
GREENWOOD 51	8	8	8	13	230	231	243	230	3.5	3.5	3.3	5.7
GREENWOOD 52	4	14	11	9	382	396	392	376	1.0	3.5	2.8	2.4
HAMPTON 1	6	5	3	12	318	314	324	293	1.9	1.6	0.9	4.1
HAMPTON 2	0	1	1	0	2	1	2	3	0.0	100.0	50.0	0.0
HORRY	247	225	204	214	7689	7,911	8,204	8,336	3.2	2.8	2.5	2.6
JASPER	5	5	11	3	94	89	75	61	5.3	5.6	14.7	4.9
KERSHAW	37	41	36	20	2000	2,029	1,959	1,950	1.9	2.0	1.8	1.0
LANCASTER	64	44	52	77	2203	2,186	2,272	2,233	2.9	2.0	2.3	3.4
LAURENS 55	48	41	31	41	940	1,005	1,014	976	5.1	4.1	3.1	4.4
LAURENS 56	11	16	15	19	488	495	510	522	2.3	3.2	2.9	3.6
LEE	0	2	0	1	30	29	33	40	0.0	6.9	0.0	2.5

**TABLE 4**  
**White Dropouts as a Percentage of the White Enrollment for Grades 9–12**  
**2011–12 through 2014–15**

DISTRICT	DROPOUTS GRADES 9–12				ENROLLMENT GRADES 9–12				PERCENTAGE				
	11–12	12–13	13–14	14-15	11–12	12–13	13–14	14-15	11–12	12–13	13–14	14-15	
LEXINGTON 1	58	78	50	57	5467	5,524	5,557	5,611	1.1	1.4	0.9	1.0	
LEXINGTON 2	13	20	40	9	1268	1,254	1,200	1,142	1.0	1.6	3.3	0.8	
LEXINGTON 3	5	14	7	5	278	269	244	269	1.8	5.2	2.9	1.9	
LEXINGTON 4	33	12	10	22	639	609	601	603	5.2	2.0	1.7	3.6	
LEXINGTON 5	29	28	19	29	3269	3,284	3,318	3,403	0.9	0.9	0.6	0.9	
MCCORMICK	1	3	0	0	35	31	34	26	2.9	9.7	0.0	0.0	
MARION 1*													
MARION 2*													
MARION 7*													
MARION 10	10	9	4	8	314	301	279	291	3.2	3.0	1.4	2.7	
MARLBORO	10	14	21	17	366	348	352	338	2.7	4.0	6.0	5.0	
NEWBERRY	9	10	16	19	841	879	876	874	1.1	1.1	1.8	2.2	
OCONEE	59	94	69	103	2399	2,393	2,366	2,360	2.5	3.9	2.9	4.4	
ORANGEBURG 3	4	5	5	12	69	67	69	55	5.8	7.5	7.2	21.8	
ORANGEBURG 4	14	13	17	20	583	597	567	540	2.4	2.2	3.0	3.7	
ORANGEBURG 5	5	5	3	2	136	127	144	132	3.7	3.9	2.1	1.5	
PICKENS	140	159	150	120	4110	4,108	4,152	4,121	3.4	3.9	3.6	2.9	
RICHLAND 1	29	26	10	19	1244	1,248	1,246	1,258	2.3	2.1	0.8	1.5	
RICHLAND 2	21	22	35	32	2248	2,210	2,144	2,055	0.9	1.0	1.6	1.6	
SALUDA	2	1	1	0	268	264	265	284	0.7	0.4	0.4	0.0	
SPARTANBURG 1	27	41	22	14	1218	1,234	1,275	1,319	2.2	3.3	1.7	1.1	
SPARTANBURG 2	67	55	40	38	2263	2,244	2,237	2,207	3.0	2.5	1.8	1.7	
SPARTANBURG 3	15	19	18	13	672	699	709	739	2.2	2.7	2.5	1.8	
SPARTANBURG 4	6	1	7	8	632	603	621	640	0.9	0.2	1.1	1.3	
SPARTANBURG 5	46	27	23	24	1488	1,525	1,527	1,533	3.1	1.8	1.5	1.6	
SPARTANBURG 6	30	31	38	24	1572	1,560	1,527	1,502	1.9	2.0	2.5	1.6	
SPARTANBURG 7	19	14	8	7	669	664	630	647	2.8	2.1	1.3	1.1	
SUMTER	31	29	30	36	1483	1,472	1,537	1,538	2.1	2.0	2.0	2.3	
UNION	23	21	27	33	699	704	658	658	3.3	3.0	4.1	5.0	
WILLIAMSBURG	0	0	0	3	62	69	62	59	0.0	0.0	0.0	5.1	
YORK 1	17	32	28	19	1051	1,073	1,127	1,146	1.6	3.0	2.5	1.7	
YORK 2	37	22	20	8	1639	1,621	1,682	1,722	2.3	1.4	1.2	0.5	
YORK 3	72	64	70	88	2772	2,762	2,671	2,577	2.6	2.3	2.6	3.4	
YORK 4	21	33	42	20	2565	2,694	2,748	2,889	0.8	1.2	1.5	0.7	
SC PUBLIC CHARTER	179	655	754	665	3734	4,375	5,022	5,430	4.8	15.0	15.0	12.2	
DEAF AND BLIND	2	1	0	1	42	42	41	39	4.8	2.4	0	2.6	
JOHN DELA HOWE				0				9				0.0	
STATE TOTAL	2611	3010	3038	3,014	115506	116988	118853	119,461	STATE AVE.	2.3	2.6	2.6	2.5

\*During the 2011–12 school year, Marion 1, Marion 2, and Marion 7 consolidated to form Marion 10.

Note: Enrollment by ethnicity/gender in 2011–12 and 2012–13 will not add to total enrollment in this table due to missing ethnicity/gender codes for some students.

Note: Enrollment totals included

Source: South Carolina Department of Education, “School Dropout Listings” 2011–12 through 2014–15; precode file 2011–12 through 2014–15. Student Dropout File collected October 2015 and the South Carolina 45-Day Average Membership file collected October 2015.

**TABLE 5**  
**Nonwhite Dropouts as a Percentage of the Nonwhite Enrollment for Grades 9–12**  
**2011–12 through 2014–15**

DISTRICT	DROPOUTS GRADES 9–12				ENROLLMENT GRADES 9–12				PERCENTAGE			
	11–12	12–13	13–14	14–15	11–12	12–13	13–14	14–15	11–12	12–13	13–14	14–15
ABBEVILLE	13	10	11	7	330	331	317	323	3.9	3.0	3.5	2.2
AIKEN	131	94	91	99	2884	2,918	3,042	3,163	4.5	3.2	3.0	3.1
ALLENDALE	18	17	8	8	338	344	369	363	5.3	4.9	2.2	2.2
ANDERSON 1	2	1	3	0	381	413	448	462	0.5	0.2	0.7	0.0
ANDERSON 2	3	10	4	11	224	232	227	219	1.3	4.3	1.8	5.0
ANDERSON 3	1	0	1	0	97	113	113	126	1.0	0.0	0.9	0.0
ANDERSON 4	5	4	2	7	207	197	197	208	2.4	2.0	1.0	3.4
ANDERSON 5	46	49	65	34	1513	1,531	1,529	1,619	3.0	3.2	4.3	2.1
BAMBERG 1	9	7	9	6	248	249	252	255	3.6	2.8	3.6	2.4
BAMBERG 2	3	6	2	4	235	206	189	184	1.3	2.9	1.1	2.2
BARNWELL 19	0	0	2	1	182	162	159	159	0.0	0.0	1.3	0.6
BARNWELL 29	7	4	1	0	162	149	150	146	4.3	2.7	0.7	0.0
BARNWELL 45	13	16	15	10	345	334	334	364	3.8	4.8	4.5	2.7
BEAUFORT	82	143	76	135	2804	2,870	3,025	3,300	2.9	5.0	2.5	4.1
BERKELEY	63	74	68	99	3941	3,942	4,154	4,384	1.6	1.9	1.6	2.3
CALHOUN	1	0	1	2	352	376	383	362	0.3	0.0	0.3	0.6
CHARLESTON	192	121	283	246	5861	5,893	6,001	6,183	3.3	2.1	4.7	4.0
CHEROKEE	19	14	39	10	818	826	834	874	2.3	1.7	4.7	1.1
CHESTER	19	18	29	43	767	734	707	704	2.5	2.5	4.1	6.1
CHESTERFIELD	13	13	7	18	963	944	996	1,029	1.3	1.4	0.7	1.7
CLARENDON 1	5	2	0	0	204	197	189	196	2.5	1.0	0.0	0.0
CLARENDON 2	18	25	13	17	614	614	625	638	2.9	4.1	2.1	2.7
CLARENDON 3	1	1	1	1	84	87	100	103	1.2	1.1	1.0	1.0
COLLETON	33	21	22	25	920	847	868	868	3.6	2.5	2.5	2.9
DARLINGTON	6	7	7	6	1669	1,673	1,728	1,721	0.4	0.4	0.4	0.3
DILLON 3	3	1	2	4	183	164	168	180	1.6	0.6	1.2	2.2
DILLON 4	28	37	29	13	823	813	806	822	3.4	4.6	3.6	1.6
DORCHESTER 2	42	43	38	40	2760	2,860	3,087	3,172	1.5	1.5	1.2	1.3
DORCHESTER 4	10	4	4	3	414	391	388	387	2.4	1.0	1.0	0.8
EDGEFIELD	0	5	18	12	468	452	457	465	0.0	1.1	3.9	2.6
FAIRFIELD	12	17	0	0	687	684	700	713	1.7	2.5	0.0	0.0
FLORENCE 1	51	63	61	52	2557	2,560	2,630	2,694	2.0	2.5	2.3	1.9
FLORENCE 2	4	3	1	2	175	187	179	185	2.3	1.6	0.6	1.1
FLORENCE 3	2	14	37	33	609	601	620	673	0.3	2.3	6.0	4.9
FLORENCE 4	2	2	0	1	145	168	189	179	1.4	1.2	0.0	0.6
FLORENCE 5	2	0	4	4	145	132	149	127	1.4	0.0	2.7	3.1
GEORGETOWN	27	26	24	13	1303	1,318	1,357	1,408	2.1	2.0	1.8	0.9
GREENVILLE	348	298	275	304	8205	8,190	8,552	8,845	4.2	3.6	3.2	3.4
GREENWOOD 50	35	28	20	30	1251	1,251	1,340	1,353	2.8	2.2	1.5	2.2
GREENWOOD 51	2	2	4	3	73	76	64	59	2.7	2.6	6.3	5.1
GREENWOOD 52	7	4	4	7	138	135	138	128	5.1	3.0	2.9	5.5
HAMPTON 1	15	5	2	11	428	392	425	408	3.5	1.3	0.5	2.7
HAMPTON 2	3	5	6	8	283	273	237	231	1.1	1.8	2.5	3.5
HORRY	119	103	84	136	3415	3,492	3,781	4,085	3.5	2.9	2.2	3.3
JASPER	11	36	35	11	658	638	606	633	1.7	5.6	5.8	1.7
KERSHAW	21	18	14	12	1039	1,040	1,085	1,155	2.0	1.7	1.3	1.0
LANCASTER	37	25	33	46	1199	1,206	1,266	1,334	3.1	2.1	2.6	3.4
LAURENS 55	16	25	15	35	595	622	647	664	2.7	4.0	2.3	5.3
LAURENS 56	10	4	6	9	367	364	370	360	2.7	1.1	1.6	2.5
LEE	7	5	3	16	563	554	608	631	1.2	0.9	0.5	2.5
LEXINGTON 1	22	21	24	21	1297	1,500	1,554	1,643	1.7	1.4	1.5	1.3

**TABLE 5**  
**Nonwhite Dropouts as a Percentage of the Nonwhite Enrollment for Grades 9–12**  
**2011–12 through 2014–15**

DISTRICT	DROPOUTS GRADES 9–12				ENROLLMENT GRADES 9–12				PERCENTAGE				
	11–12	12–13	13–14	14–15	11–12	12–13	13–14	14–15	11–12	12–13	13–14	14–15	
LEXINGTON 2	37	44	36	20	1089	1,117	1,175	1,205	3.4	3.9	3.1	1.7	
LEXINGTON 3	7	3	6	11	247	241	266	281	2.8	1.2	2.3	3.9	
LEXINGTON 4	7	3	0	7	269	289	292	276	2.6	1.0	0.0	2.5	
LEXINGTON 5	37	30	29	38	1927	1,941	1,983	2,053	1.9	1.5	1.5	1.9	
MCCORMICK	1	5	3	3	185	174	175	168	0.5	2.9	1.7	1.8	
MARION 1*													
MARION 2*													
MARION 7*													
MARION 10	39	29	27	19	1156	1,149	1,111	1,067	3.4	2.5	2.4	1.8	
MARLBORO	35	27	28	12	835	812	845	851	4.2	3.3	3.3	1.4	
NEWBERRY	15	14	26	35	855	871	904	896	1.8	1.6	2.9	3.9	
OCONEE	17	19	13	20	630	624	658	629	2.7	3.0	2.0	3.2	
ORANGEBURG 3	24	28	15	25	732	717	720	754	3.3	3.9	2.1	3.3	
ORANGEBURG 4	14	5	6	17	531	535	552	561	2.6	0.9	1.1	3.0	
ORANGEBURG 5	33	25	25	32	1579	1,578	1,654	1,666	2.1	1.6	1.5	1.9	
PICKENS	21	32	22	14	775	750	816	851	2.7	4.3	2.7	1.6	
RICHLAND 1	238	163	142	180	5130	5,161	5,165	5,213	4.6	3.2	2.7	3.5	
RICHLAND 2	106	114	95	88	5658	5,783	6,069	6,195	1.9	2.0	1.6	1.4	
SALUDA	9	11	8	15	317	309	314	320	2.8	3.6	2.5	4.7	
SPARTANBURG 1	4	2	2	5	260	277	273	282	1.5	0.7	0.7	1.8	
SPARTANBURG 2	19	15	4	8	725	738	761	802	2.6	2.0	0.5	1.0	
SPARTANBURG 3	4	5	1	9	233	225	230	203	1.7	2.2	0.4	4.4	
SPARTANBURG 4	1	1	1	0	215	199	193	196	0.5	0.5	0.5	0.0	
SPARTANBURG 5	9	20	13	8	770	749	787	806	1.2	2.7	1.7	1.0	
SPARTANBURG 6	43	44	23	25	1623	1,668	1,717	1,775	2.6	2.6	1.3	1.4	
SPARTANBURG 7	59	29	28	32	1220	1,190	1,166	1,212	4.8	2.4	2.4	2.6	
SUMTER	71	94	75	96	3144	3,129	3,203	3,230	2.3	3.0	2.3	3.0	
UNION	17	12	16	16	516	501	500	474	3.3	2.4	3.2	3.4	
WILLIAMSBURG	1	0	16	1	1270	1,169	1,215	1,201	0.1	0.0	1.3	0.1	
YORK 1	7	4	3	6	377	399	450	455	1.9	1.0	0.7	1.3	
YORK 2	3	2	3	2	350	373	383	416	0.9	0.5	0.8	0.5	
YORK 3	91	81	66	65	2330	2,399	2,469	2,650	3.9	3.4	2.7	2.5	
YORK 4	18	9	13	10	618	768	862	974	2.9	1.2	1.5	1.0	
SC PUBLIC CHARTER	55	200	219	190	1100	1,331	1,586	1,776	5.0	15.0	13.8	10.9	
DEAF AND BLIND	1	0	2	0	88	78	71	65	1.1	0	2.8	0.0	
JOHN DELA HOWE				1				14				7.1	
STATE TOTAL	2582	2521	2469	2,629	93688	94453	97,897	100,775	STATE AVE.	2.8	2.7	2.5	2.6

\*During the 2011–12 school year, Marion 1, Marion 2, and Marion 7 consolidated to form Marion 10.

Note: Enrollment by ethnicity/gender in 2011–12 and 2012–13 will not add to total enrollment in this table due to missing ethnicity/gender codes for some students.

Note: Enrollment totals included

Source: South Carolina Department of Education, “School Dropout Listings” 2011–12 through 2014–15; precode file 2011–12 through 2014–15. Student Dropout File collected October 2015 and the South Carolina 45-Day Average Membership file collected October 2015.

**TABLE 6**  
**White Female Dropouts as a Percentage of the White Female Enrollment for Grades 9–12**  
**2011–12 through 2014–15**

DISTRICT	DROPOUTS GRADES 9–12				ENROLLMENT GRADES 9–12				PERCENTAGE			
	11–12	12–13	13–14	14-15	11-12	12-13	13-14	14-15	11-12	12-13	13-14	14-15
ABBEVILLE	2	3	2	0	263	243	243	247	0.8	1.2	0.8	0.0
AIKEN	45	28	37	49	1912	1,900	1,840	1,877	2.4	1.5	2.0	2.6
ALLENDALE	0	0	0	0	1	2	4	5	0.0	0.0	0.0	0.0
ANDERSON 1	13	9	5	7	1138	1,176	1,149	1,184	1.1	0.8	0.4	0.6
ANDERSON 2	17	7	12	10	416	415	405	407	4.1	1.7	3.0	2.5
ANDERSON 3	6	6	0	1	309	305	307	304	1.9	2.0	0.0	0.3
ANDERSON 4	9	9	9	11	288	293	289	285	3.1	3.1	3.1	3.9
ANDERSON 5	30	21	26	15	959	1,007	985	983	3.1	2.1	2.6	1.5
BAMBERG 1	3	4	2	2	73	72	67	76	4.1	5.6	3.0	2.6
BAMBERG 2		0	0	0		1	2	2		0.0	0.0	0.0
BARNWELL 19	1	0	0	0	23	31	25	26	4.3	0.0	0.0	0.0
BARNWELL 29	1	0	0	0	67	64	62	66	1.5	0.0	0.0	0.0
BARNWELL 45	0	4	5	6	163	165	170	150	0.0	2.4	2.9	4.0
BEAUFORT	18	25	21	23	1289	1,306	1,365	1,364	1.4	1.9	1.5	1.7
BERKELEY	47	19	36	35	2095	2,141	2,231	2,281	2.2	0.9	1.6	1.5
CALHOUN	0	1	0	0	28	34	35	35	0.0	2.9	0.0	0.0
CHARLESTON	34	20	28	33	2854	3,031	3,122	3,282	1.2	0.7	0.9	1.0
CHEROKEE	19	18	32	14	827	851	856	821	2.3	2.1	3.7	1.7
CHESTER	9	11	10	15	321	331	340	335	2.8	3.3	2.9	4.5
CHESTERFIELD	6	6	3	14	589	594	610	595	1.0	1.0	0.5	2.4
CLARENDON 1	0	0	0	0	2	2	2	1	0.0	0.0	0.0	0.0
CLARENDON 2	3	6	3	2	136	117	104	103	2.2	5.1	2.9	1.9
CLARENDON 3	0	0	1	3	108	115	131	136	0.0	0.0	0.8	2.2
COLLETON	8	13	12	9	377	352	360	364	2.1	3.7	3.3	2.5
DARLINGTON	2	0	1	0	617	599	628	619	0.3	0.0	0.2	0.0
DILLON 3	5	2	3	0	115	124	157	158	4.3	1.6	1.9	0.0
DILLON 4	10	4	4	3	156	165	160	161	6.4	2.4	2.5	1.9
DORCHESTER 2	24	20	16	18	1981	1,970	2,024	2,087	1.2	1.0	0.8	0.9
DORCHESTER 4	0	1	1	1	107	102	108	113	0.0	1.0	0.9	0.9
EDGEFIELD	0	3	5	2	162	149	141	147	0.0	2.0	3.5	1.4
FAIRFIELD	0	1	1	0	46	51	49	40	0.0	2.0	2.0	0.0
FLORENCE 1	15	8	7	18	947	929	961	953	1.6	0.9	0.7	1.9
FLORENCE 2	2	4	1	0	84	86	70	73	2.4	4.7	1.4	0.0
FLORENCE 3	1	2	5	9	136	132	139	128	0.7	1.5	3.6	7.0
FLORENCE 4	1	0	0	0	7	12	12	11	14.3	0.0	0.0	0.0
FLORENCE 5	5	0	3	4	146	150	141	142	3.4	0.0	2.1	2.8
GEORGETOWN	13	11	5	10	648	641	678	669	2.0	1.7	0.7	1.5
GREENVILLE	103	128	118	98	6290	6,312	6,434	6,387	1.6	2.0	1.8	1.5
GREENWOOD 50	5	3	12	8	612	611	598	589	0.8	0.5	2.0	1.4
GREENWOOD 51	2	2	3	3	106	109	116	120	1.9	1.8	2.6	2.5
GREENWOOD 52	2	6	4	2	176	179	180	176	1.1	3.4	2.2	1.1
HAMPTON 1	2	0	0	4	140	148	166	149	1.4	0.0	0.0	2.7
HAMPTON 2	0	0	1	0		0	1	1		0.0	100.0	0.0
HORRY	119	89	71	82	3737	3,943	4,078	4,164	3.2	2.3	1.7	2.0
JASPER	2	1	5	0	29	38	32	34	6.9	2.6	15.6	0.0
KERSHAW	9	15	13	7	966	970	933	929	0.9	1.5	1.4	0.8
LANCASTER	25	17	19	30	1018	1,043	1,115	1,090	2.5	1.6	1.7	2.8
LAURENS 55	24	10	11	13	455	508	521	480	5.3	2.0	2.1	2.7
LAURENS 56	4	7	7	9	229	233	241	252	1.7	3.0		3.6
LEE	0	1	0	0	9	13	18	17	0.0	7.7	0.0	0.0



**TABLE 6**

**White Female Dropouts as a Percentage of the White Female Enrollment for Grades 9–12  
2011–12 through 2014–15**

DISTRICT	DROPOUTS GRADES 9–12				ENROLLMENT GRADES 9–12				PERCENTAGE				
	11–12	12–13	13–14	14–15	11–12	12–13	13–14	14–15	11–12	12–13	13–14	14–15	
LEXINGTON 1	24	30	23	20	2696	2,681	2,766	2,770	0.9	1.1	0.8	0.7	
LEXINGTON 2	6	3	14	3	624	645	597	541	1.0	0.5	2.3	0.6	
LEXINGTON 3	4	5	5	1	130	127	116	137	3.1	3.9	4.3	0.7	
LEXINGTON 4	10	4	3	6	304	276	277	288	3.3	1.4	1.1	2.1	
LEXINGTON 5	9	7	11	10	1644	1,642	1,675	1,689	0.5	0.4	0.7	0.6	
MCCORMICK	1	2	0	0	16	14	15	14	6.3	14.3	0.0	0.0	
MARION 1*													
MARION 2*													
MARION 7*													
MARION 10	0	4	2	4	158	145	137	126	0.0	2.8	1.5	3.2	
MARLBORO	5	8	10	13	174	168	162	156	2.9	4.8	6.2	8.3	
NEWBERRY	1	1	9	8	405	421	421	430	0.2	0.2	2.1	1.9	
OCONEE	21	38	29	47	1163	1,155	1,161	1,137	1.8	3.3	2.5	4.1	
ORANGEBURG 3	3	4	1	4	30	28	35	26	10.0	14.3	2.9	15.4	
ORANGEBURG 4	6	5	7	7	286	277	233	232	2.1	1.8	3.0	3.0	
ORANGEBURG 5	2	1	3	0	59	62	67	68	3.4	1.6	4.5	0.0	
PICKENS	60	56	59	38	1996	1,979	2,016	2,012	3.0	2.8	2.9	1.9	
RICHLAND 1	12	9	7	8	607	607	584	600	2.0	1.5	1.2	1.3	
RICHLAND 2	13	5	11	13	1107	1,102	1,031	966	1.2	0.5	1.1	1.3	
SALUDA	0	0	1	0	136	132	134	144	0.0	0.0	0.7	0.0	
SPARTANBURG 1	10	19	9	7	578	604	602	644	1.7	3.1	1.5	1.1	
SPARTANBURG 2	28	21	11	19	1042	1,037	1,040	1,042	2.7	2.0	1.1	1.8	
SPARTANBURG 3	8	4	6	6	313	345	351	376	2.6	1.2	1.7	1.6	
SPARTANBURG 4	3	0	5	3	318	296	297	294	0.9	0.0	1.7	1.0	
SPARTANBURG 5	19	10	10	7	727	730	723	744	2.6	1.4	1.4	0.9	
SPARTANBURG 6	18	13	9	3	755	768	757	755	2.4	1.7	1.2	0.4	
SPARTANBURG 7	9	7	2	3	292	293	307	307	3.1	2.4	0.7	1.0	
SUMTER	14	13	13	14	735	715	739	724	1.9	1.8	1.8	1.9	
UNION	16	10	8	16	344	350	331	324	4.7	2.9	2.4	4.9	
WILLIAMSBURG	0	0	0	2	25	22	18	15	0.0	0.0	0.0	13.3	
YORK 1	8	16	13	7	545	551	583	573	1.5	2.9	2.2	1.2	
YORK 2	15	8	2	3	803	810	809	833	1.9	1.0	0.2	0.4	
YORK 3	25	24	28	33	1310	1,335	1,300	1,266	1.9	1.8	2.2	2.6	
YORK 4	5	13	14	9	1205	1,308	1,359	1,428	0.4	1.0	1.0	0.6	
SC PUBLIC CHARTER	90	379	421	367	2171	2,522	2,828	3,018	4.1	15.0	14.9	12.2	
DEAF AND BLIND	1	1	0	1	16	21	19	21	6.3	4.8	0.0	4.8	
JOHN DELA HOWE				0				1				0.0	
STATE TOTAL	1092	1265	1306	1,252	56071	57037	58,143	58,369	STATE AVE.	1.9	2.2	2.2	2.1

\*During the 2011–12 school year, Marion 1, Marion 2, and Marion 7 consolidated to form Marion 10.

Note: Enrollment by ethnicity/gender in 2011–12 and 2012–13 will not add to total enrollment in this table due to missing ethnicity/gender codes for some students.

Note: Enrollment totals included

Source: South Carolina Department of Education, “School Dropout Listings” 2011–12 through 2014–15; precode file 2011–12 through 2014–15. Student Dropout File collected October 2015 and the South Carolina 45-Day Average Membership file collected October 2015.

**TABLE 7**

**Nonwhite Female Dropouts as a Percentage of the Nonwhite Female Enrollment for Grades 9–12  
2011–12 through 2014–15**

DISTRICT	DROPOUTS GRADES 9–12				ENROLLMENT GRADES 9–12				PERCENTAGE			
	11–12	12–13	13–14	14-15	11-12	2-13	13-14	14-15	11–12	12–13	13–14	14-15
ABBEVILLE	3	3	3	3	166	171	155	161	1.8	1.8	1.9	1.9
AIKEN	45	43	38	40	1378	1,405	1,458	1,502	3.3	3.1	2.6	2.7
ALLENDALE	6	6	3	3	153	158	166	161	3.9	3.8	1.8	1.9
ANDERSON 1	0	0	1	0	172	197	217	216	0.0	0.0	0.5	0.0
ANDERSON 2	2	6	1	3	121	118	111	109	1.7	5.1	0.9	2.8
ANDERSON 3	0	0	0	0	40	44	50	59	0.0	0.0	0.0	0.0
ANDERSON 4	3	1	1	1	96	93	100	105	3.1	1.1	1.0	1.0
ANDERSON 5	18	19	28	13	714	755	776	834	2.5	2.5	3.6	1.6
BAMBERG 1	5	1	2	2	107	110	107	114	4.7	0.9	1.9	1.8
BAMBERG 2	2	3	0	0	102	100	104	99	2.0	3.0	0.0	0.0
BARNWELL 19	0	0	1	1	96	80	82	80	0.0	0.0	1.2	1.3
BARNWELL 29	4	1	0	0	66	62	70	69	6.1	1.6	0.0	0.0
BARNWELL 45	4	7	5	3	177	164	165	178	2.3	4.3	3.0	1.7
BEAUFORT	37	56	22	48	1365	1,426	1,512	1,692	2.7	3.9	1.5	2.8
BERKELEY	22	33	22	41	1873	1,858	2,038	2,180	1.2	1.8	1.1	1.9
CALHOUN	0	0	0	0	180	201	198	198	0.0	0.0	0.0	0.0
CHARLESTON	74	49	92	88	2901	2,911	3,025	3,114	2.6	1.7	3.0	2.8
CHEROKEE	6	6	12	4	407	409	408	427	1.5	1.5	2.9	0.9
CHESTER	4	6	14	21	404	387	362	357	1.0	1.6	3.9	5.9
CHESTERFIELD	9	6	5	4	494	481	506	530	1.8	1.2	1.0	0.8
CLARENDON 1	4	0	0	0	112	103	93	90	3.6	0.0	0.0	0.0
CLARENDON 2	9	9	3	4	305	290	305	311	3.0	3.1	1.0	1.3
CLARENDON 3	0	1	1	0	39	40	52	52	0.0	2.5	1.9	0.0
COLLETON	13	6	9	8	466	436	459	453	2.8	1.4	2.0	1.8
DARLINGTON	1	1	1	2	842	874	892	882	0.1	0.1	0.1	0.2
DILLON 3	3	1	2	0	107	96	89	882	2.8	1.0	2.2	0.0
DILLON 4	14	15	10	3	413	404	411	96	3.4	3.7	2.4	0.0
DORCHESTER 2	13	18	16	12	1370	1,429	1,541	435	0.9	1.3	1.0	0.7
DORCHESTER 4	4	1	3	2	209	197	185	1,612	1.9	0.5	1.6	0.7
EDGEFIELD	0	0	4	3	228	213	239	185	0.0	0.0	1.7	1.1
FAIRFIELD	3	4	0	0	369	350	373	242	0.8	1.1	0.0	1.2
FLORENCE 1	25	20	25	21	1289	1,290	1,334	368	1.9	1.6	1.9	0.0
FLORENCE 2	0	2	0	0	93	87	72	1,372	0.0	2.3	0.0	1.5
FLORENCE 3	0	5	15	13	304	284	298	71	0.0	1.8	5.0	0.0
FLORENCE 4	1	2	0	1	68	80	87	339	1.5	2.5	0.0	3.8
FLORENCE 5	0	0	2	0	65	60	69	77	0.0	0.0	2.9	1.3
GEORGETOWN	11	11	9	5	634	647	652	62	1.7	1.7	1.4	0.0
GREENVILLE	118	105	91	94	4023	4,002	4,178	665	2.9	2.6	2.2	0.8
GREENWOOD 50	11	11	13	14	638	646	678	4,312	1.7	1.7	1.9	2.2
GREENWOOD 51	1	0	1	0	30	35	30	654	3.3	0.0	3.3	2.1
GREENWOOD 52	3	1	1	3	71	71	73	26	4.2	1.4	1.4	0.0
HAMPTON 1	8	3	1	1	215	183	214	68	3.7	1.6	0.5	4.4
HAMPTON 2	0	1	2	1	139	138	125	226	0.0	0.7	1.6	0.4
HORRY	43	35	28	61	1632	1,681	1,835	124	2.6	2.1	1.5	0.8
JASPER	6	16	12	2	337	306	278	1,989	1.8	5.2	4.3	3.1
KERSHAW	8	8	4	3	500	471	496	308	1.6	1.7	0.8	0.6
LANCASTER	16	9	11	18	562	585	621	520	2.8	1.5	1.8	0.6
LAURENS 55	8	16	8	12	262	299	296	656	3.1	5.4	2.7	4.0
LAURENS 56	6	0	4	1	204	195	193	301	2.9	0.0	2.1	0.6
LEE	7	2	0	7	300	305		328	0.7	0.7		2.1
LEXINGTON 1	5	12	8	9	624	716	737	783	1.4	1.7	1.1	1.1

**TABLE 7**  
**Nonwhite Female Dropouts as a Percentage of the Nonwhite Female Enrollment for Grades 9–12**  
**2011–12 through 2014–15**

DISTRICT	DROPOUTS GRADES 9–12				ENROLLMENT GRADES 9–12				PERCENTAGE				
	11–12	12–13	13–14	14–15	11–12	12–13	13–14	14–15	11–12	12–13	13–14	14–15	
LEXINGTON 2	24	19	17	10	516	527	571	580	3.1	3.6	3.0	1.7	
LEXINGTON 3	5	3	1	3	129	121	132	144	2.3	2.5	0.8	2.1	
LEXINGTON 4	0	0	0	1	132	144	134	132	3.8	0.0	0.0	0.8	
LEXINGTON 5	15	13	12	14	950	958	972	1,047	1.5	1.4	1.2	1.3	
MCCORMICK	1	1	1	0	97	83	79	79	0.0	1.2	1.3	0.0	
MARION 1*	8												
MARION 2*	10												
MARION 7*	0												
MARION 10		13	9	7	560	553	535	520	2.9	2.4	1.7	1.3	
MARLBORO	15	12	9	4	388	378	413	429	4.1	3.2	2.2	0.9	
NEWBERRY	6	5	8	8	416	410	422	437	1.0	1.2	1.9	1.8	
OCONEE	2	5	7	10	311	291	308	300	2.3	1.7	2.3	3.3	
ORANGEBURG 3	7	5	2	10	357	375	374	391	1.7	1.3	0.5	2.6	
ORANGEBURG 4	4	3	1	5	268	260	271	279	2.6	1.2	0.4	1.8	
ORANGEBURG 5	11	10	10	13	802	793	808	822	1.5	1.3	1.2	1.6	
PICKENS	4	11	9	6	365	358	381	400	2.2	3.1	2.4	1.5	
RICHLAND 1	93	70	45	78	2573	2,615	2,620	2,637	3.1	2.7	1.7	3.0	
RICHLAND 2	40	37	41	32	2764	2,850	3,025	3,116	1.8	1.3	1.4	1.0	
SALUDA	3	4	7	5	137	138	139	142	2.9	2.9	5.0	3.5	
SPARTANBURG 1	2	1	1	1	125	127	136	138	0.8	0.8	0.7	0.7	
SPARTANBURG 2	12	10	0	4	342	343	353	358	2.3	2.9	0.0	1.1	
SPARTANBURG 3	1	1	0	4	107	103	115	100	1.9	1.0	0.0	4.0	
SPARTANBURG 4	0	0	1	0	91	88	86	85	0.0	0.0	1.2	0.0	
SPARTANBURG 5	7	10	5	3	349	338	358	377	1.4	3.0	1.4	0.8	
SPARTANBURG 6	13	16	8	11	807	869	927	922	2.2	1.8	0.9	1.2	
SPARTANBURG 7	44	16	14	10	630	605	601	605	4.1	2.6	2.3	1.7	
SUMTER	9	40	15	40	1619	1,545	1,614	1,592	1.7	2.6	0.9	2.5	
UNION	3	3	5	4	235	235	223	224	1.7	1.3	2.2	1.8	
WILLIAMSBURG	3	0	7	1	607	583	601	603	0.0	0.0	1.2	0.2	
YORK 1	2	1	1	2	189	197	225	225	0.0	0.5	0.4	0.9	
YORK 2	4	1	1	1	174	170	189	200	0.6	0.6	0.5	0.5	
YORK 3	49	29	16	20	1143	1,207	1,237	1,329	2.9	2.4	1.3	1.5	
YORK 4	3	2	8	4	302	372	416	504	1.7	0.5	1.9	0.8	
SC PUBLIC CHARTER	12	121	131	108	654	777	901	994	3.8	15.6	14.5	10.7	
DEAF AND BLIND	0	0	0	0	43	37	5	34	2.3	0.0	0.0	0.0	
JOHN DELA HOWE				0				4				0.0	
STATE TOTAL	1113	1023	926	994	45773	46180	48,125	49,771	STATE AVE.	2.2	2.2	1.9	2.0

\*During the 2011–12 school year, Marion 1, Marion 2, and Marion 7 consolidated to form Marion 10.

Note: Enrollment by ethnicity/gender in 2011–12 and 2012–13 will not add to total enrollment in this table due to missing ethnicity/gender codes for some students.

Note: Enrollment totals included

Source: South Carolina Department of Education, “School Dropout Listings” 2011–12 through 2014–15; precode file 2011–12 through 2014–15. Student Dropout File collected October 2015 and the South Carolina 45-Day Average Membership file collected October 2015.

**TABLE 8**  
**White Male Dropouts as a Percentage of the White Male Enrollment for Grades 9–12**  
**2011–12 through 2014–15**

DISTRICT	DROPOUTS GRADES 9–12				ENROLLMENT GRADES 9–12				PERCENTAGE			
	11–12	12–13	13–14	14–15	11–12	12–13	13–14	14–15	11–12	12–13	13–14	14–15
ABBEVILLE	12	13	11	5	287	299	299	297	4.2	4.3	3.7	1.7
AIKEN	82	45	57	63	2020	1,998	1,973	1,965	4.1	2.3	2.9	3.2
ALLENDALE	0	1	0	0	3	2	1	1	0.0	50.0	0.0	0.0
ANDERSON 1	17	8	8	15	1202	1,257	1,308	1,386	1.4	0.6	0.6	1.1
ANDERSON 2	15	17	7	8	434	452	474	503	3.5	3.8	1.5	1.6
ANDERSON 3	11	3	0	2	294	328	352	328	3.7	0.9	0.0	0.6
ANDERSON 4	9	10	9	12	346	351	368	348	2.6	2.8	2.4	3.4
ANDERSON 5	36	45	33	21	1037	1,027	992	1,038	3.5	4.4	3.3	2.0
BAMBERG 1	5	2	1	3	79	89	97	102	6.3	2.2	1.0	2.9
BAMBERG 2	0	0	0	0	1	1	2	0	0.0	0.0	0.0	0.0
BARNWELL 19	2	0	0	2	22	23	21	20	9.1	0.0	0.0	10.0
BARNWELL 29	2	2	0	0	74	73	67	62	2.7	2.7	0.0	0.0
BARNWELL 45	2	4	9	10	179	171	165	166	1.1	2.3	5.5	6.0
BEAUFORT	33	45	23	43	1372	1,407	1,420	1,427	2.4	3.2	1.6	3.0
BERKELEY	51	50	49	72	2338	2,348	2,351	2,411	2.2	2.1	2.1	3.0
CALHOUN	0	0	0	1	52	49	57	63	0.0	0.0	0.0	1.6
CHARLESTON	47	29	69	65	2985	3,097	3,182	3,320	1.6	0.9	2.2	2.0
CHEROKEE	28	24	54	26	876	838	869	870	3.2	2.9	6.2	3.0
CHESTER	17	17	8	14	441	403	390	378	3.9	4.2	2.1	3.7
CHESTERFIELD	10	6	4	16	615	599	599	577	1.6	1.0	0.7	2.8
CLARENDON 1	0	0	0	0	1	4	2	3	0.0	0.0	0.0	0.0
CLARENDON 2	10	7	3	6	139	128	112	101	7.2	5.5	2.7	5.9
CLARENDON 3	1	3	0	1	110	127	131	152	0.9	2.4	0.0	0.7
COLLETON	16	18	16	19	356	365	394	392	4.5	4.9	4.1	4.8
DARLINGTON	4	2	2	2	676	656	670	652	0.6	0.3	0.3	0.3
DILLON 3	1	2	0	5	123	116	124	138	0.8	1.7	0.0	3.6
DILLON 4	7	5	6	8	147	161	178	182	4.8	3.1	3.4	4.4
DORCHESTER 2	25	33	28	28	2136	2,154	2,152	2,166	1.2	1.5	1.3	1.3
DORCHESTER 4	5	5	2	4	111	121	123	119	4.5	4.1	1.6	3.4
EDGEFIELD	1	3	6	6	189	179	161	170	0.5	1.7	3.7	3.5
FAIRFIELD	1	5	0	0	62	62	63	60	1.6	8.1	0.0	0.0
FLORENCE 1	24	29	23	18	1002	993	1,025	993	2.4	2.9	2.2	1.8
FLORENCE 2	1	9	2	1	90	97	103	98	1.1	9.3	1.9	1.0
FLORENCE 3	1	4	7	12	120	120	129	125	0.8	3.3	5.4	9.6
FLORENCE 4	0	1	0	0	8	19	11	12	0.0	5.3	0.0	0.0
FLORENCE 5	7	5	5	4	158	144	141	150	4.4	3.5	3.5	2.7
GEORGETOWN	13	19	19	14	731	724	761	797	1.8	2.6	2.5	1.8
GREENVILLE	181	163	189	194	6671	6,763	6,783	6,693	2.7	2.4	2.8	2.9
GREENWOOD 50	13	19	6	10	638	654	670	647	2.0	2.9	0.9	1.5
GREENWOOD 51	6	6	5	10	124	122	127	110	4.8	4.9	3.9	9.1
GREENWOOD 52	2	8	7	7	206	217	212	200	1.0	3.7	3.3	3.5
HAMPTON 1	4	5	3	8	178	166	158	144	2.2	3.0	1.9	5.6
HAMPTON 2	0	1	0	0	2	1	1	2	0.0	100.0	0.0	0.0
HORRY	128	136	133	132	3952	3,968	4,126	4,172	3.2	3.4	3.2	3.2
JASPER	3	4	6	3	65	51	43	27	4.6	7.8	14.0	11.1
KERSHAW	28	26	23	13	1034	1,059	1,026	1,021	2.7	2.5	2.2	1.3
LANCASTER	39	27	33	47	1185	1,143	1,157	1,143	3.3	2.4	2.9	4.1
LAURENS 55	24	31	20	28	485	497	493	496	4.9	6.2	4.1	5.6
LAURENS 56	7	9	8	10	259	262	269	270	2.7	3.4	3.0	3.7
LEE	0	1	0	1	21	16	15	23	0.0	6.3	0.0	4.3
LEXINGTON 1	34	48	27	37	2847	2771	2,843	2,841	1.2	1.7	1.0	1.3

**TABLE 8**  
**White Male Dropouts as a Percentage of the White Male Enrollment for Grades 9–12**  
**2011–12 through 2014–15**

DISTRICT	DROPOUTS GRADES 9–12				ENROLLMENT GRADES 9–12				PERCENTAGE				
	11–12	12–13	13–14	14–15	11–12	12–13	13–14	14–15	11–12	12–13	13–14	14–15	
LEXINGTON 2	7	17	26	6	644	609	603	601	1.1	2.8	4.3	1.0	
LEXINGTON 3	1	9	2	4	148	142	128	132	0.7	6.3	1.6	3.0	
LEXINGTON 4	23	8	7	16	335	333	324	315	6.9	2.4	2.2	5.1	
LEXINGTON 5	20	21	8	19	1625	1,642	1,643	1,714	1.2	1.3	0.5	1.1	
MCCORMICK	0	1	0	0	19	17	19	12	0.0	5.9	0.0	0.0	
MARION 1*													
MARION 2*													
MARION 7*													
MARION 10	10	5	2	4	156	156	142	165	6.4	3.2	1.4	2.4	
MARLBORO	5	6	11	4	192	180	190	182	2.6	3.3	5.8	2.5	
NEWBERRY	8	9	7	11	436	458	455	444	1.8	2.0	1.5	2.5	
OCONEE	38	56	40	56	1236	1,238	1,205	1,223	3.1	4.5	3.3	4.6	
ORANGEBURG 3	1	1	4	8	39	39	34	29	2.6	2.6	11.8	27.6	
ORANGEBURG 4	8	8	10	13	297	320	334	308	2.7	2.5	3.0	4.2	
ORANGEBURG 5	3	4	0	2	77	65	77	64	3.9	6.2	0.0	3.1	
PICKENS	80	103	91	82	2114	2,129	2,136	2,109	3.8	4.8	4.3	3.9	
RICHLAND 1	17	17	3	11	637	641	662	658	2.7	2.7	0.5	1.7	
RICHLAND 2	8	17	24	19	1141	1,108	1,113	1,089	0.7	1.5	2.2	1.7	
SALUDA	2	1	0	0	132	132	131	140	1.5	0.8	0.0	0.0	
SPARTANBURG 1	17	22	13	7	640	630	673	675	2.7	3.5	1.9	1.0	
SPARTANBURG 2	39	34	29	19	1221	1,207	1,197	1,165	3.2	2.8	2.4	1.6	
SPARTANBURG 3	7	15	12	7	359	354	358	363	1.9	4.2	3.4	1.9	
SPARTANBURG 4	3	1	2	5	314	307	324	346	1.0	0.3	0.6	1.4	
SPARTANBURG 5	27	17	13	17	761	795	804	789	3.5	2.1	1.6	2.2	
SPARTANBURG 6	12	18	29	21	817	792	770	747	1.5	2.3	3.8	2.8	
SPARTANBURG 7	10	7	6	4	377	371	323	340	2.7	1.9	1.9	1.2	
SUMTER	17	16	17	22	748	757	798	814	2.3	2.1	2.1	2.7	
UNION	7	11	19	17	355	354	327	334	2.0	3.1	5.8	5.1	
WILLIAMSBURG	0	0	0	1	37	47	44	44	0.0	0.0	0.0	2.3	
YORK 1	9	16	15	12	506	522	544	573	1.8	3.1	2.8	2.1	
YORK 2	22	14	18	5	836	811	873	889	2.6	1.7	2.1	0.6	
YORK 3	47	40	42	55	1462	1,427	1,371	1,311	3.2	2.8	3.1	4.2	
YORK 4	16	20	28	11	1360	1,386	1,389	1,461	1.2	1.4	2.0	0.8	
SC PUBLIC CHARTER	89	276	333	298	1563	1,853	2,194	2,412	5.7	14.9	15.2	12.4	
DEAF AND BLIND	1	0	0	0	26	21	22	18	3.8	0.0	0.0	0.0	
JOHN DELA HOWE				0				8				0.0	
STATE TOTAL	1519	1745	1732	1,762	59431	59949	60608	61,092	STATE AVE.	2.6	2.9	2.9	2.9

\*During the 2011–12 school year, Marion 1, Marion 2, and Marion 7 consolidated to form Marion 10.

Note: Enrollment by ethnicity/gender in 2011–12, and 2012–13 will not add to total enrollment in this table due to missing ethnicity/gender codes for some students.

Note: Enrollment totals included

Source: South Carolina Department of Education, “School Dropout Listings” 2011–12 through 2014–15; precode file 2011–12 through 2014–15. Student Dropout File collected October 2015 and the South Carolina 45-Day Average Membership file collected October 2015.

**TABLE 9**  
**Nonwhite Male Dropouts as a Percentage of the Nonwhite Male Enrollment for Grades 9–12**  
**2011–12 through 2014–15**

DISTRICT	DROPOUTS GRADES 9–12				ENROLLMENT GRADES 9–12				PERCENTAGE			
	11–12	12–13	13–14	14–15	11–12	12–13	13–14	14–15	11–12	12–13	13–14	14–15
ABBEVILLE	10	7	8	4	164	160	162	162	6.1	4.4	4.9	2.5
AIKEN	86	51	53	59	1506	1,513	1,584	1,661	5.7	3.4	3.3	3.6
ALLENDALE	12	11	5	5	185	186	203	202	6.5	5.9	2.5	2.5
ANDERSON 1	2	1	2	0	209	216	231	246	1.0	0.5	0.9	0.0
ANDERSON 2	1	4	3	8	103	114	116	110	1.0	3.5	2.6	7.3
ANDERSON 3	1	0	1	0	57	69	63	67	1.8	0.0	1.6	0.0
ANDERSON 4	2	3	1	6	111	104	97	103	1.8	2.9	1.0	5.8
ANDERSON 5	28	30	37	21	799	776	753	785	3.5	3.9	4.9	2.7
BAMBERG 1	4	6	7	4	141	139	145	141	2.8	4.3	4.8	2.8
BAMBERG 2	1	3	2	4	133	106	85	85	0.8	2.8	2.4	4.7
BARNWELL 19	0	0	1	0	86	82	77	79	0.0	0.0	1.3	0.0
BARNWELL 29	3	3	1	0	96	87	80	77	3.1	3.4	1.3	0.0
BARNWELL 45	9	9	10	7	168	170	169	186	5.4	5.3	5.9	3.8
BEAUFORT	45	87	54	87	1439	1,444	1,513	1,608	3.1	6.0	3.6	5.4
BERKELEY	41	41	46	58	2068	2,084	2,116	2,204	2.0	2.0	2.2	2.6
CALHOUN	1	0	1	2	172	175	185	164	0.6	0.0	0.5	1.2
CHARLESTON	118	72	191	158	2960	2,982	2,976	3,068	4.0	2.4	6.4	5.1
CHEROKEE	13	8	27	6	411	417	426	447	3.2	1.9	6.3	1.3
CHESTER	15	12	15	22	363	347	345	347	4.1	3.5	4.3	6.3
CHESTERFIELD	4	7	2	14	469	463	490	499	0.9	1.5	0.4	2.8
CLARENDON 1	1	2	0	0	92	94	96	106	1.1	2.1	0.0	0.0
CLARENDON 2	9	16	10	13	309	324	320	327	2.9	4.9	3.1	4.0
CLARENDON 3	1	0	0	1	45	47	48	51	2.2	0.0	0.0	2.0
COLLETON	20	15	13	17	453	411	409	415	4.4	3.6	3.2	4.1
DARLINGTON	5	6	6	4	827	799	836	839	0.6	0.8	0.7	0.5
DILLON 3	0	0	0	4	76	68	79	84	0.0	0.0	0.0	4.8
DILLON 4	14	22	19	10	410	409	395	387	3.4	5.4	4.8	2.6
DORCHESTER 2	29	25	22	28	1390	1,431	1,546	1,560	2.1	1.7	1.4	1.8
DORCHESTER 4	6	3	1	1	205	194	203	202	2.9	1.5	0.5	0.5
EDGEFIELD	0	5	14	9	240	239	218	223	0.0	2.1	6.4	4.0
FAIRFIELD	9	13	0	0	318	334	327	345	2.8	3.9	0.0	0.0
FLORENCE 1	26	43	36	31	1268	1,270	1,296	1,322	2.1	3.4	2.8	2.3
FLORENCE 2	4	1	1	2	82	100	107	114	4.9	1.0	0.9	1.8
FLORENCE 3	2	9	22	20	304	317	322	334	0.7	2.8	6.8	6.0
FLORENCE 4	1	0	0	0	76	87	102	102	1.3	0.0	0.0	0.0
FLORENCE 5	2	0	2	4	80	72	80	65	2.5	0.0	2.5	6.2
GEORGETOWN	16	15	15	8	669	671	705	743	2.4	2.2	2.1	1.1
GREENVILLE	230	193	184	210	4182	4,188	4,374	4,533	5.5	4.6	4.2	4.6
GREENWOOD 50	24	17	7	16	613	605	662	699	3.9	2.8	1.1	2.3
GREENWOOD 51	1	2	3	3	43	41	34	33	2.3	4.9	8.8	9.1
GREENWOOD 52	4	3	3	4	67	64	65	60	6.0	4.7	4.6	6.7
HAMPTON 1	7	2	1	10	213	209	211	182	3.3	1.0	0.5	5.5
HAMPTON 2	3	4	4	7	143	135	112	107	2.1	3.0	3.6	6.5
HORRY	76	68	56	75	1783	1,811	1,946	2,096	4.3	3.8	2.9	3.6
JASPER	5	20	23	9	321	332	328	325	1.6	6.0	7.0	2.8
KERSHAW	13	10	10	9	539	569	589	635	2.4	1.8	1.7	1.4
LANCASTER	21	16	22	28	637	621	645	678	3.3	2.6	3.4	4.1
LAURENS 55	8	9	7	23	333	323	351	363	2.4	2.8	2.0	6.3
LAURENS 56	4	4	2	8	163	169	177	182	2.5	2.4		4.4
LEE	5	3	3	9	263	249	282	303	1.9	1.2	1.1	3.0

**TABLE 9**  
**Nonwhite Male Dropouts as a Percentage of the Nonwhite Male Enrollment for Grades 9–12**  
**2011–12 through 2014–15**

DISTRICT	DROPOUTS GRADES 9–12				ENROLLMENT GRADES 9–12				PERCENTAGE				
	11–12	12–13	13–14	14–15	11–12	12–13	13–14	14–15	11–12	12–13	13–14	14–15	
LEXINGTON 1	13	9	16	12	673	784	817	860	1.9	1.1	2.0	1.4	
LEXINGTON 2	21	25	19	10	573	590	604	625	3.7	4.2	3.1	1.6	
LEXINGTON 3	4	0	5	8	118	120	134	137	3.4	0.0	3.7	5.8	
LEXINGTON 4	2	3	0	6	137	145	158	144	1.5	2.1	0.0	4.2	
LEXINGTON 5	23	17	17	24	977	983	1,011	1,006	2.4	1.7	1.7	2.4	
MCCORMICK	1	4	2	3	88	91	96	89	1.1	4.4	2.1	3.4	
MARION 1*													
MARION 2*													
MARION 7*													
MARION 10	23	16	18	12	596	596	576	547	3.9	2.7	3.1	2.2	
MARLBORO	19	15	19	8	447	434	432	422	4.3	3.5	4.4	1.9	
NEWBERRY	11	9	18	27	439	461	482	459	2.5	2.0	3.7	5.9	
OCONEE	10	14	6	10	319	333	350	329	3.1	4.2	1.7	3.0	
ORANGEBURG 3	18	23	13	15	375	342	346	363	4.8	6.7	3.8	4.1	
ORANGEBURG 4	7	2	5	12	263	275	281	282	2.7	0.7	1.8	4.3	
ORANGEBURG 5	21	15	15	19	777	785	846	844	2.7	1.9	1.8	2.3	
PICKENS	13	21	13	8	410	392	435	451	3.2	5.4	3.0	1.8	
RICHLAND 1	158	93	97	102	2,557	2,546	2,545	2,576	6.2	3.7	3.8	4.0	
RICHLAND 2	55	77	54	56	2,893	2,933	3,044	3,079	1.9	2.6	1.8	1.8	
SALUDA	5	7	1	10	180	171	175	178	2.8	4.1	0.6	5.6	
SPARTANBURG 1	3	1	1	4	135	150	137	144	2.2	0.7	0.7	2.8	
SPARTANBURG 2	11	5	4	4	383	395	408	444	2.9	1.3	1.0	0.9	
SPARTANBURG 3	2	4	1	5	126	122	115	103	1.6	3.3	0.9	4.9	
SPARTANBURG 4	1	1	0	0	124	111	107	111	0.8	0.9	0.0	0.0	
SPARTANBURG 5	4	10	8	5	421	411	429	429	1.0	2.4	1.9	1.2	
SPARTANBURG 6	25	28	15	14	816	799	790	853	3.1	3.5	1.9	1.6	
SPARTANBURG 7	33	13	14	22	590	585	565	607	5.6	2.2	2.5	3.6	
SUMTER	44	54	60	56	1,525	1,584	1,589	1,638	2.9	3.4	3.8	3.4	
UNION	13	9	11	12	281	266	277	250	4.6	3.4	4.0	4.8	
WILLIAMSBURG	1	0	9	0	663	586	614	598	0.2	0.0	1.5	0.0	
YORK 1	7	3	2	4	188	202	225	230	3.7	1.5	0.9	1.7	
YORK 2	2	1	2	1	176	203	194	216	1.1	0.5	1.0	0.5	
YORK 3	58	52	50	45	1,187	1,192	1,232	1,321	4.9	4.4	4.1	3.4	
YORK 4	13	7	5	6	316	396	446	470	4.1	1.8	1.1	1.3	
SC PUBLIC CHARTER	30	79	88	86	446	554	685	782	6.7	14.3	12.8	11.0	
DEAF AND BLIND	0	0	2	0	45	41	39	31	0.0	0.0	5.1	0.0	
JOHN DELA HOWE				1				10				10.0	
STATE TOTAL	1593	1498	1543	1,635	47909	48265	49710	50,653	STATE AVE.	3.3	3.1	3.1	3.2

\*During the 2011–12 school year, Marion 1, Marion 2, and Marion 7 consolidated to form Marion 10.

Note: Enrollment by ethnicity/gender in 2011–12 and 2012–13 will not add to total enrollment in this table due to missing ethnicity/gender codes for some students.

Note: Enrollment totals included

Source: South Carolina Department of Education, “School Dropout Listings” 2011–12 through 2014–15; precode file 2011–12 through 2014–15. Student Dropout File collected October 2015 and the South Carolina 45-Day Average Membership file collected October 2015.

## GLOSSARY

---

**average daily membership.** The aggregate number of days for which students are enrolled in school divided by the number of days in the reporting period. The average daily membership (ADM) is computed for all public schools and districts at the end of 45 days and 135 days of school. The latter count is considered official for funding purposes.

**dropout.** A student who leaves school for any reason other than death before graduation or completion of a program of studies and does not transfer to another school or institution.

**dropout collection cycle.** A twelve-month collection cycle that begins the first day of school and ends the day before the first day of school the following year.

**dropout (event) rate.** The proportion of students who during a single year leave high school without having completed a program of studies and do not transfer to another school or institution.

**enrollment 180 days.** The cumulative 35-day enrollment at the end of 180 days of school. A student is counted in the 35-day enrollment on the 35th day the student has been present in school provided the student has not been counted in the 35-day enrollment of any other school in the state.

**enrollment precode.** Student-level information reported by school districts in January of each year and updated in March.

**ethnicity.** The classification of large groups of people according to common racial, national, or cultural origin or background.

**white.** The racial/ethnic category designating a person having origins in any of the peoples of Europe, North Africa, or the Middle East.

**Nonwhite.** A racial/ethnic category that includes African Americans, Hispanics, Asian/Pacific Islanders, and American Indians.

The South Carolina Department of Education does not discriminate on the basis of race, color, national origin, sex, or disability in admission to, treatment in, or employment in its programs and activities. Inquiries regarding the nondiscrimination policies should be made to the director of the Office of Human Resources, 1429 Senate Street, Columbia, South Carolina 29201, 803-734-8505.