

D4925
2.W37

WEST COLUMBIA

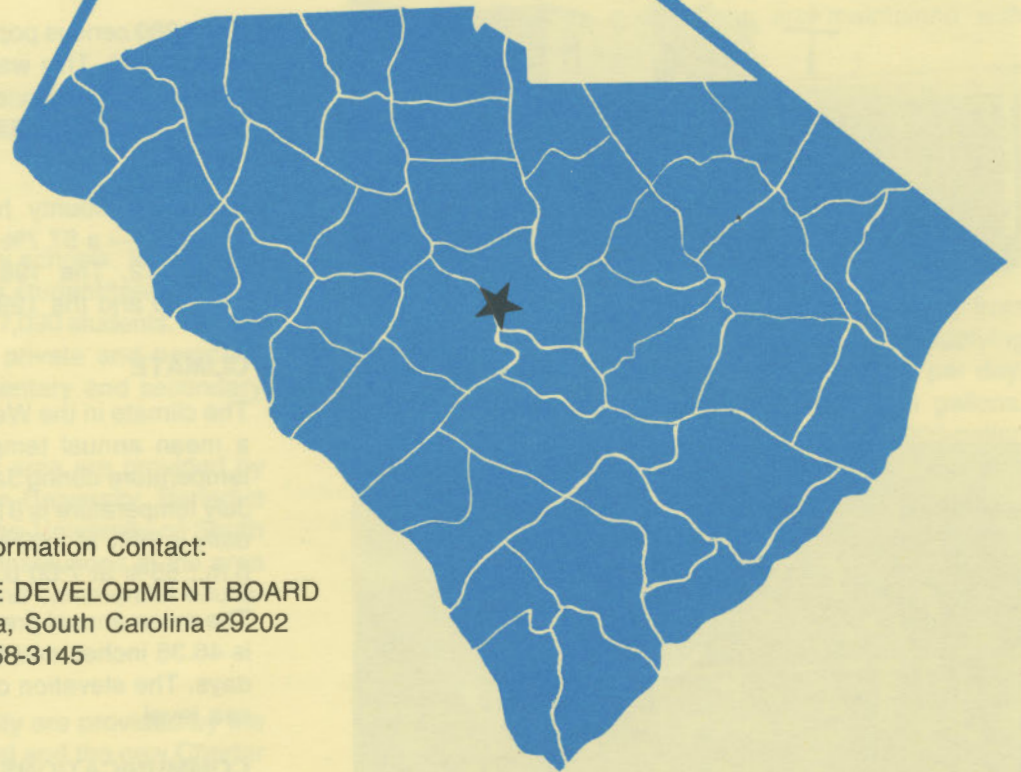
south carolina



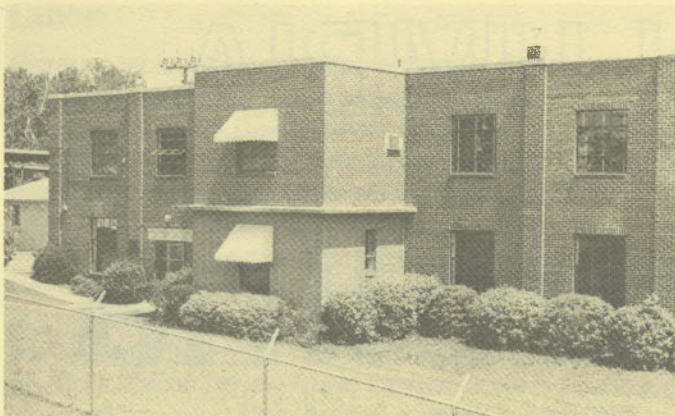
S. C. STATE LIBRARY

AUG 1 8 1983

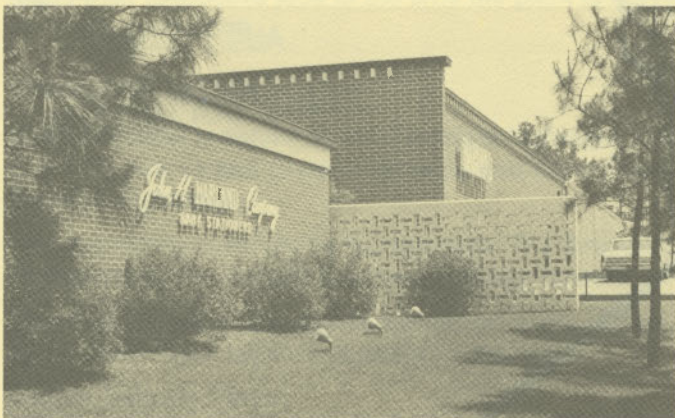
STATE DOCUMENTS



For Additional Information Contact:
SOUTH CAROLINA STATE DEVELOPMENT BOARD
P. O. Box 927, Columbia, South Carolina 29202
(803) 758-3145



West Columbia Water Filter Plant



John H. Harland Company



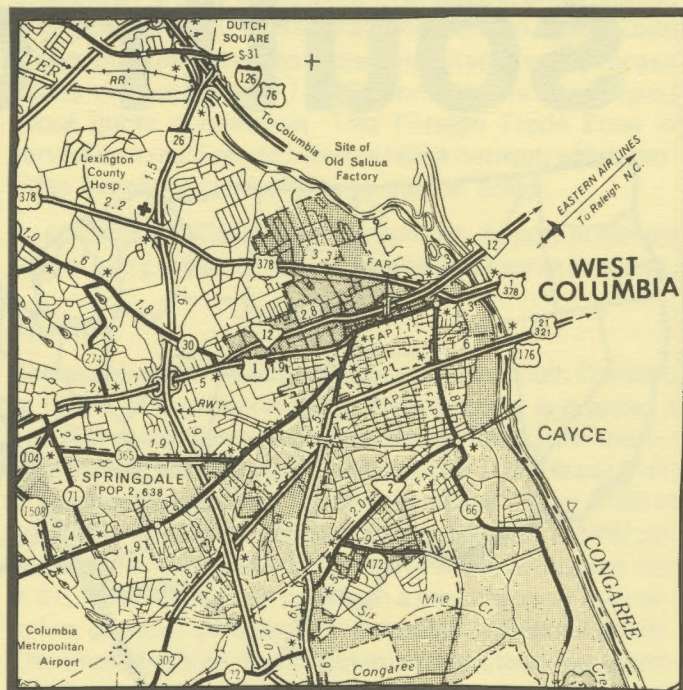
West Columbia City Council



Lexington County Hospital

LOCATION

As depicted on the cover, West Columbia is in the central section of the state in Lexington County. Charleston, South Carolina's busiest port, is 110 miles southeast. Columbia is east and Greenville is 101 miles northwest. West Columbia is 215 miles east of Atlanta; 692 miles south of New York; and 2,738 miles east of San Francisco.



POPULATION

The 1980 census population of the city of West Columbia was 10,409. This was a 32.8% increase from the 1970 census population of 7,838. The population within a 15-mile radius is 367,225 and within a 30-mile radius is 454,784.

Lexington County had a 1980 census population of 140,353, — a 57.7% increase from the 1970 population of 89,012. The 1981 estimated county population is 144,400 and the 1990 projected population is 195,200.

CLIMATE

The climate in the West Columbia area is temperate with a mean annual temperature of 63.5° F. The average temperature during January is 45.4° F., while the average July temperature is 81.2° F. The average relative humidity daily is 84% at 1:00 a.m.; 87% at 7:00 a.m.; 52% at 1:00 p.m.; 65% at 7:00 p.m.

The mean annual precipitation in the West Columbia area is 46.36 inches and the average growing season is 224 days. The elevation of West Columbia is 200 feet above sea level.

COMMUNICATIONS

The weekly *Journal* is published in the community and two large dailies are published in Columbia. Eight radio stations serve the tri-city area of West Columbia, Columbia and Cayce. Television reception is available from four Columbia stations, representing the three major networks

and educational television. Telephone service in the community is provided by the Southern Bell Telephone and Telegraph Company.

GOVERNMENT

The community has a council form of municipal government. The eight city council members and the mayor are elected for four year terms. Lexington County is governed locally by a nine member county council and an administrator. Council members are elected for four-year terms.

POLICE AND FIRE

The West Columbia Police Department has 27 full-time police officers. The department operates 26 radio equipped patrol cars. The West Columbia Fire Department has 22 full-time firemen who operate five pumper trucks and one rescue vehicle. West Columbia's insurance rating is Class 5.

FINANCIAL INSTITUTIONS

West Columbia has seven branch banks and one savings and loan association to serve the financial needs of the community. The banks have total assets of over \$6 billion, while the savings and loan has assets of over \$83 million.

HOTELS AND MOTELS

The tri-city area of West Columbia, Columbia and Cayce has over 54 hotels and motels with a total of over 3,000 overnight accommodations.

CHURCHES

The tri-city area has over 290 churches. Thirty-eight religious faiths are represented, including Catholic, Jewish and Protestant denominations.

EDUCATION

West Columbia has six elementary schools, four middle schools and one high school. The student/teacher ratio is 18.1 to 1, with 390 teachers and 7,090 students. Private schooling is available at several private and parochial schools which provide both elementary and secondary education.

Higher education facilities for the area are provided by Midlands Technical College, Allen University, Benedict College, Columbia College and the University of South Carolina. Other higher education institutions in the area specialize in business, religious and commercial education.

MEDICAL SERVICES

Medical services for the community are provided by the 272-bed Lexington County Hospital and the new Charter Rivers Hospital for Alcohol and Substance Abuse. General hospitals, an Army Hospital, the State Mental Hospital and a Veterans Administration Hospital are located in the adjacent city of Columbia. The community is served by 20 privately-practicing dentists and 51 privately-practicing medical doctors.

RECREATION AND CIVIC FACILITIES

Recreation facilities in the tri-city area include 24 indoor movie theaters, five bowling alleys, four public and nine private golf courses, several recreation centers and numerous parks and playgrounds. Collegiate spectator sports, concerts, dramatic presentations, fine art exhibitions, museums, historical sites and cultural activities provide additional sources of recreation and entertainment. Lake Murray, 15 miles away, provides areas for fishing, boating, sailing, swimming, water skiing, and camping. The city is midway between mountain and coastal resort communities.

POWER

Electric power is supplied by South Carolina Electric & Gas Company. For 1983 SCE&G projects reserve capacity to system coincidental peak of 33%. The company's total generating capacity is 3,359 megawatts. An additional 600 megawatts of nuclear generation will be on line in the fall of 1983 and 550 megawatts of coal fired generation is scheduled for 1989. SCE&G plans to have sufficient reserves to meet immediate and future electrical needs of its service area. In addition SCE&G maintains inter-tie connections with four neighboring utilities.

Electric power is also available from Mid-Carolina Cooperative. Power is generated by Central Electric Cooperative and South Carolina Public Service Authority. The generation capacity of plants in operation or under construction totals 3,435 megawatts with 73% produced from coal. Inter-tie connections are maintained with neighboring power supplies.

FUELS

Natural gas is supplied by South Carolina Electric & Gas Company.

WATER

The community obtains its municipal water supply from the Saluda River. The system is capable of supplying water at a maximum rate of 4.2 million gallons per day, with an average daily demand of 2.8 million gallons. Treated water storage consists of one 500,000-gallon elevated tank and 800,000 gallons in ground-level reservoirs.

Analysis of water supplied in the community:

Total Solids	NA
Alkalinity	27 mg/L
Calcium	7 mg/L
Hardness	22 mg/L
Iron	.1 mg/L
pH	6.6

SEWER

The city of West Columbia is presently using the wastewater treatment plant in adjacent Columbia. Columbia's plant has a capacity for 40 million gpd with an average daily flow of 28 million gpd.

LABOR

Because labor information may change in this area, a current labor availability report prepared and kept up to date by the S. C. State Development Board will be furnished to prospective manufacturers at their request. The comprehensive report will include sources of recruitable labor, labor force characteristics, work force skill levels, earnings data and other pertinent information. The S.C. State Board for Technical and Comprehensive Education has the resources to recruit and train workers in accordance with a company's entry criteria. This training is at little or no cost to the employer. A lead time schedule is developed to coordinate recruiting, testing, selecting, and training. This assures that persons will be able to move from training to their respective jobs at the time the plant is ready for initial production.

TRANSPORTATION

West Columbia is served by two interstate highways, I-20 and I-26, five United States highways and three South Carolina highways.

The community is served by two railroads: The Seaboard Systems and the Norfolk-Southern Railway System.

The West Columbia area has 38 authorized motor carriers, 23 of which have terminal facilities in the area.

Freight Delivery Times:

To:	By Rail:	By Truck:
Atlanta	3 days	1 day
Boston	6 days	4 days
Chicago	6 days	3 days
Houston	9 days	2 days
New York	4 days	3 days
St. Louis	6 days	2 days
San Francisco	12 days	5 days

The Columbia Metropolitan Airport, four miles from the community, offers regularly scheduled commercial airline service on Delta, Eastern, Bankair and Piedmont. Private aircraft also utilize the Columbia Metropolitan Airport,

which has paved and lighted runways of 7,550 and 5,000 feet. Services available at Columbia Metropolitan are flight instruction, aircraft rentals, air taxi services, major airframe and powerplant repair, a modern air freight terminal, 100 LL and Jet A fuels, RBn, Unicom and Vortac.

FOREIGN TRADE ZONE

There is a Foreign Trade Zone in South Carolina, located in Charleston, 110 miles away. The Foreign Trade Zone allows manufacturers to store, manufacture or process goods without paying U.S. Customs duties or worrying about quota compliance. This Foreign Trade Zone is served by a multi-mode transportation network which provides excellent accessibility to market areas.

In addition the Columbia Metropolitan Airport achieved port of entry status in 1983 and is open to serve this area.

TAXES

The assessment on industrial property in South Carolina is 10.5% of the market value. New industry is granted a five-year moratorium on general county taxes (with the exception of school taxes). The city tax rate is \$4.00 per \$100 of assessed value. The county rate is \$16.75 per \$100 of assessed value. The effective city tax rate (tax liability per \$100 of market value) is \$.42. The effective county tax rate is \$1.76. The state has no tax on a manufacturer's inventories, goods-in-process, raw materials or finished goods. Treatment facilities or equipment of manufacturing plants which control water or air pollution are exempt from all property taxation.

INDUSTRIAL SITES

Industrial sites are available in West Columbia with a wide range of geographic and topographic features. In all probability, a site that will meet the needs of most industries' requirements has been identified, catalogued, and entered into the State Development Board's Computerized Site Selection System. Detailed site information is available and will be furnished upon request.

MAJOR EMPLOYERS

Name	Product or Service	Employees
Champion Road Machinery	Champion Motor Graders	199
Colite Industries, Inc.	Signs	285
John H. Harland Co.	Bank Checks	233
NCR Corporation	Computer Equipment	710
Southern Plastics	Plastic Extrusion	200
Tamper Div. Cannon Corp	Railroad Equipment	733

