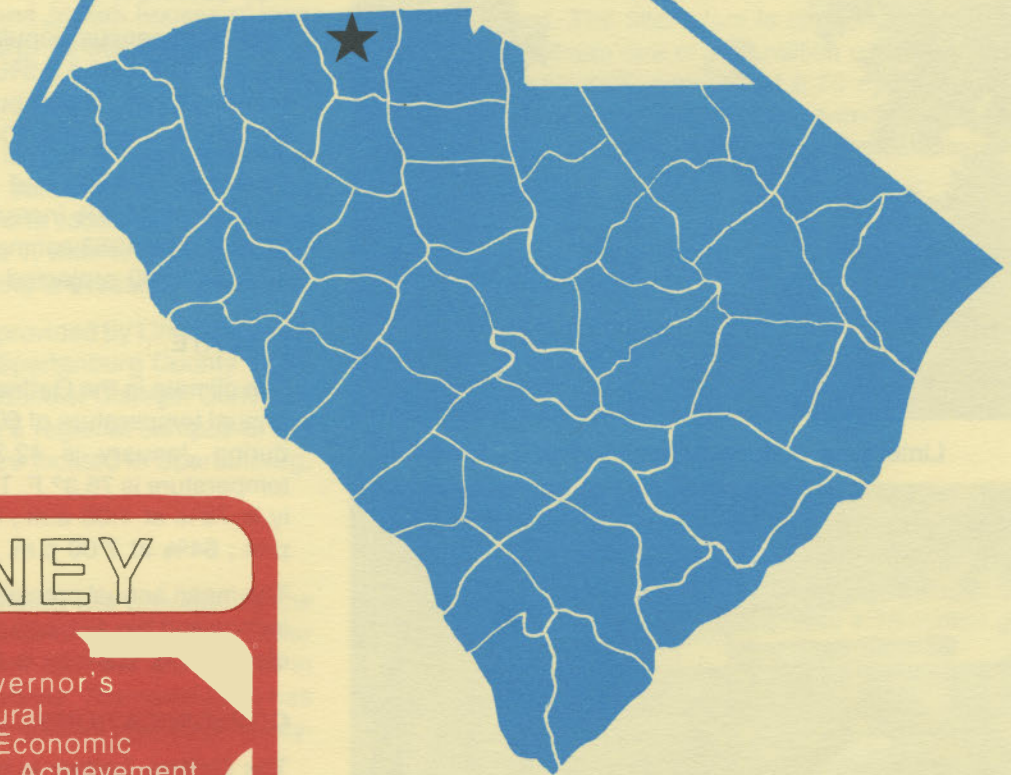


D4925
2.G13
1984
Copy 1

GAFFNEY

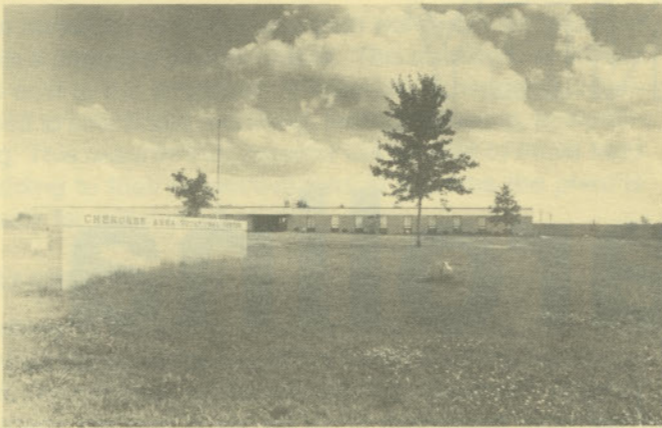
south carolina



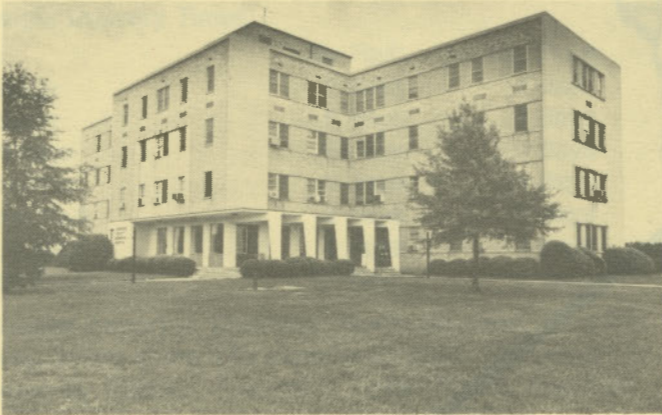
S. C. STATE LIBRARY

AUG 15 1984

STATE DOCUMENTS



Cherokee Vocational Center



Cherokee County Memorial Hospital



Limestone College Administration Building



The Timken Company

LOCATION

As depicted on the cover, Gaffney, seat of Cherokee County, is in the northern section of the state. Charleston, South Carolina's busiest port, is 209 miles southeast. Columbia is 99 miles south and Greenville is 51 miles west. Gaffney is 193 miles east of Atlanta; 657 miles south of New York; and 2,716 miles east of San Francisco.



POPULATION

The 1980 census population of the city of Gaffney was 13,453. This was a 2.5% increase from the 1970 population of 13,131. The population within a 15-mile radius is 91,695, and within a 30-mile radius is 461,838.

Cherokee County had a 1980 census population of 40,983, an 11.8% increase from the 1970 population of 36,669. The 1983 estimated county population is 41,790 and the 1990 projected population is 46,200.

CLIMATE

The climate in the Gaffney area is temperate with a mean annual temperature of 60.6° F. The average temperature during January is 42.3° F, while the average July temperature is 78.3° F. The average relative humidity daily is 78% at 1:00 a.m.; 82% at 7:00 a.m.; 54% at 1:00 p.m.; 64% at 7:00 p.m.

The mean annual precipitation in the Gaffney area is 47.54 inches and the average growing season is 231 days. The elevation of Gaffney is 850 feet above sea level.

COMMUNICATIONS

The *Gaffney Ledger* is published three times a week in the city, and several dailies circulate in the area. Radio stations WEAC-FM, WAGI-FM and WFGN-AM provide local broadcast coverage. Television reception is available from seven stations, representing the three major networks and educational television. Cable television is available in the area. Telephone service is provided by Southern Bell of Bell South Corporation.

GOVERNMENT

The community has a council form of municipal government. The six city council members and the mayor are elected for four-year terms. Cherokee County is governed by a council-administrator. The seven council members are elected for four-year terms.

POLICE AND FIRE

The Gaffney Police Department has 22 full-time police officers. The department operates six radio equipped patrol cars. The Gaffney Fire Department has 20 full-time firemen who operate five pumper trucks, an 85-foot ladder truck and 2 mini trucks. A trained rescue squad with a rescue truck is provided. Gaffney's insurance rating is Class 5.

FINANCIAL INSTITUTIONS

Gaffney has three banks and two savings and loan associations to serve the financial needs of the community. The banks have total assets of \$2.5 billion, while the savings and loans have assets of \$241 million.

HOTELS AND MOTELS

The community has three motels with a total of 145 overnight accommodations.

CHURCHES

Gaffney has over 35 Protestant churches. A Catholic church is located in the city, and Jewish houses of worship are located in Spartanburg, 19 miles away.

EDUCATION

Gaffney, which is included in the Cherokee County Schools, has 12 elementary schools; two junior high schools; two high schools; and one vocational school. The student/teacher ratio is 15.5 to 1, with 477 teachers and 7,415 students. Private schooling is available in the area.

Higher education facilities are provided by Limestone College, located in the city. The Spartanburg County Technical College, Spartanburg Methodist College, Converse College, Wofford College and a regional campus of the University of South Carolina are located in Spartanburg, 19 miles away.

MEDICAL SERVICES

Medical services for the community are provided by the 162-bed Cherokee County Memorial Hospital. Other hospitals and medical treatment facilities are located in Spartanburg, 19 miles from Gaffney. The community has 27 privately-practicing medical doctors and 10 privately-practicing dentists.

RECREATION AND CIVIC FACILITIES

Recreation facilities consist of five parks equipped with playground equipment, outdoor cooking and picnic facilities. The county employs a full-time recreation director. The Gaffney Country Club, two miles away, has a nine-hole golf course, tennis courts, clubhouse, fishing lakes

and pool. The Cherokee National Golf & Recreational Club, five miles away, has an 18-hole golf course, tennis courts, clubhouse and pool. The city has two indoor movie theaters. Lake Whelchel, the city's 200-acre raw water reservoir, provides areas for picnicking, boating and water skiing. Cherokee County has a 100-acre county park under construction. The Cherokee County YMCA offers modern facilities for family recreation on the campus of Limestone College.

POWER

Electric power is available to the community from the Gaffney Board of Public Works. Duke Power Company and Broad River Electric Co-Op also provide electrical service in areas outside the City of Gaffney. Electrical service is provided to any industrial customer at rates that are among the lowest in the nation.

Electric company representatives are available to assist industry in its economic application of electricity and in analyzing their electrical needs and usages.

FUELS

Natural gas is supplied by the United Cities Gas Company.

WATER

The community obtains its municipal water supply from Lake Whelchel. The filter plant is capable of supplying water at a maximum rate of 12.0 million gallons per day, with an average daily demand of 6.75 million gallons. Treated water storage consists of 2.4 million gallons in elevated storage and 2.5 million gallons in ground storage.

Analysis of water supplied in the community:

Total solids	6 mg/L
Alkalinity	11 mg/L
Calcium	3 mg/L
Hardness	13 mg/L
Iron	.09 mg/L
pH	7.2

SEWER

The Gaffney Board of Public Works utilizes three wastewater treatment plants to dispose of the city's wastewater. The capacities and average daily use of these plants are 3.6 million gpd and 1.6 million gallons; 3.2 million gpd and 1.5 million gallons; and 1.35 million gpd and .9 million gallons.

LABOR

Because labor information may change in this area, a current labor availability report prepared and kept up to date by the S. C. State Development Board will be furnished to prospective manufacturers at their request. The comprehensive report will include sources of recruitable labor, labor force characteristics, work force skill levels, earnings data and other pertinent information. The S. C. State Board for Technical and Comprehensive Education has

the resources to recruit and train workers in accordance with a company's entry criteria. This training is at little or no cost to the employer. A lead-time schedule is developed to coordinate recruiting, testing, selecting, and training. This assures that persons will be able to move from training to their respective jobs at the time the plant is ready for initial production.

TRANSPORTATION

Gaffney is served by one interstate highway, I-85, one United States highway and five South Carolina highways. The community is served by the Southern Railway System. Gaffney is served by 45 authorized motor carriers, one of which has terminal facilities in the community.

Freight Delivery Times:

To:	By Rail:	By Truck:
Atlanta	2 days	1 day
Boston	6 days	3 days
Chicago	6 days	3 days
Houston	9 days	4 days
New York	4 days	3 days
St. Louis	5 days	3 days
San Francisco	12 days	5 days

Douglas Airport in Charlotte, North Carolina, 45 miles away, offers some 175 departures daily. The airport is served by Eastern, Piedmont, Delta, Ozark, Republic, Sunbird, U.S. Air, United and Wheeler airlines.

The Greenville-Spartanburg Jetport, 40 miles away, offers regularly scheduled commercial airline service on Eastern, Bankair, Atlantic Southeast, Sunbird, Wheeler, Piedmont and U.S. Air. Private aircraft utilize the Spartanburg Downtown Memorial Airport, 20 miles away, which has paved and lighted runways of 3,400 and 5,203 feet. Spartanburg's downtown airport has flight instruction, charter,

rentals, air taxi, RBn, major airframe and major powerplant repairs, 100LL and Jet A fuel, Unicom and Vortac.

FOREIGN TRADE ZONE

A Foreign Trade Zone is located in Summerville, South Carolina, 25 miles from the Port of Charleston and 184 miles from the community. The Foreign Trade Zone allows manufacturers to store, manufacture, or process goods without paying U.S. Customs duties or worrying about quota compliance. This Foreign Trade Zone is served by a multimode transportation network which provides excellent accessibility to market areas.

TAXES

The assessment on industrial property in South Carolina is 10.5% of the market value. New industry is granted a five-year moratorium on general county taxes (with the exception of school taxes). The city tax rate is \$9.30 per \$100 of assessed value. The county rate is \$15.38 per \$100 of assessed value. The effective city tax rate (tax liability per \$100 of market value) is \$.98. The effective county rate is \$1.61. The state has no tax on a manufacturer's inventories, goods-in-process, raw materials or finished goods. Treatment facilities or equipment of manufacturing plants which control water or air pollution are exempt from all property taxation.

INDUSTRIAL SITES

Industrial sites are available in Gaffney with a wide range of geographic and topographic features. In all probability, a site that will meet the needs of most industries' requirements has been identified, catalogued, and entered into the State Development Board's Computerized Site Selection System. Detailed site information is available and will be furnished upon request.

MAJOR EMPLOYERS

Name	Product or Service	Employees
Cherokee Finishing Co.	Textile printing and finishing	298
Hamrick Mills	Print cloth and sheeting	310
Litton Industries Union — Butterfield Div.	Twist drills	125
M. Lowenstein Corp. (2 plants)	Broadwoven fabrics — polyester	694
Oxford of Gaffney	Ladies' sportswear	495
Southeastern-Kusan, Inc.	Molded plastic products	225
Stouffer Foods Corp.	Frozen prepared foods	1,250
The Timken Co.	Roller bearings	700

For Additional Information Contact:

SOUTH CAROLINA STATE DEVELOPMENT BOARD
P. O. Box 927, Columbia, South Carolina 29202
(803) 758-3145

