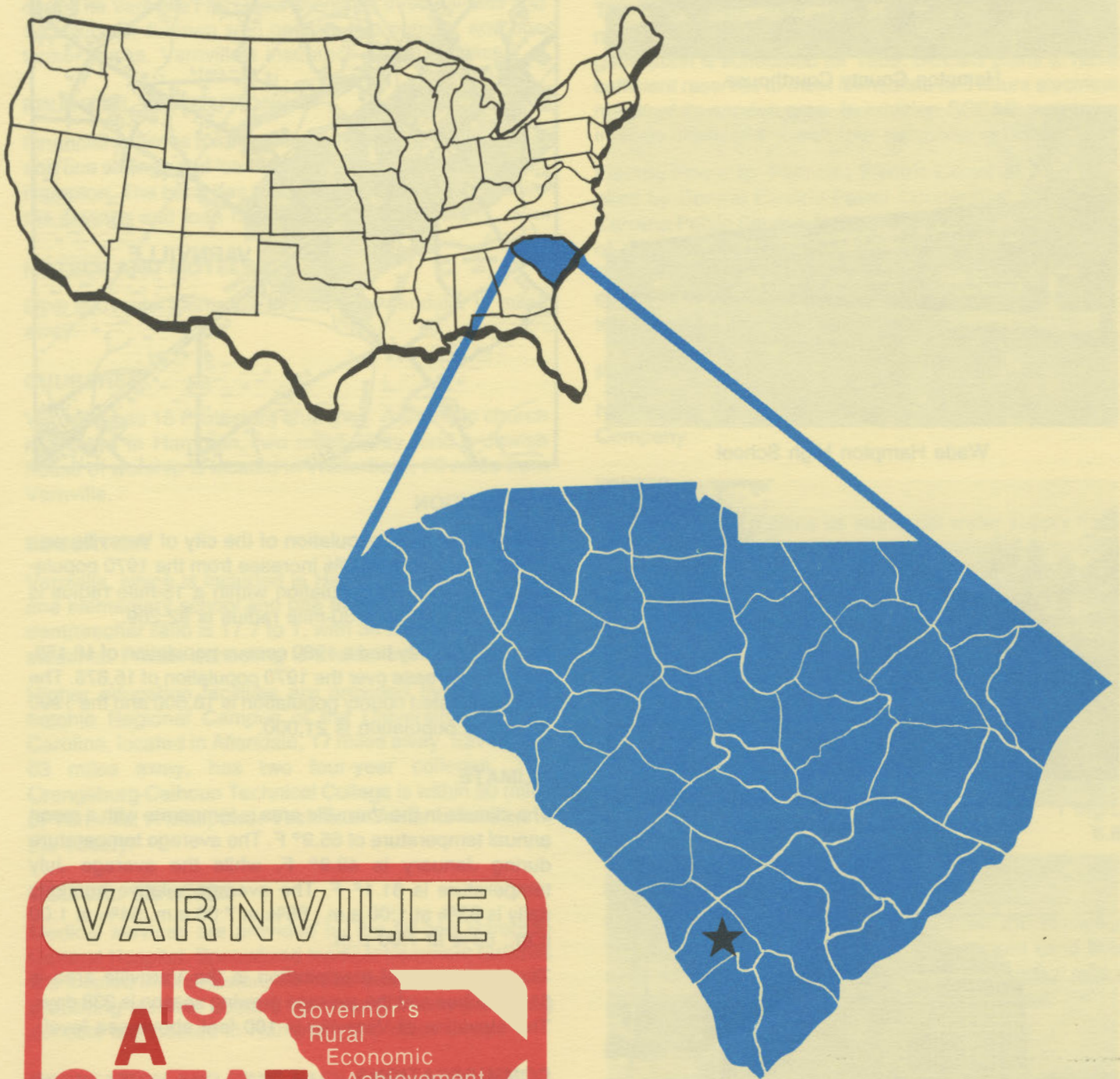


D4925
2.V16
1984

VARNVILLE

south carolina



VARNVILLE

IS

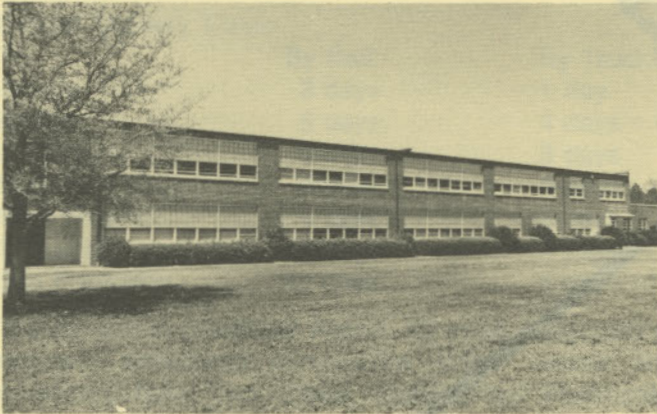
A GREAT TOWN

Governor's Rural Economic Achievement Trophy

S. C. STATE LIBRARY
JUN 7 1984
STATE DOCUMENTS



Hampton County Courthouse



Wade Hampton High School



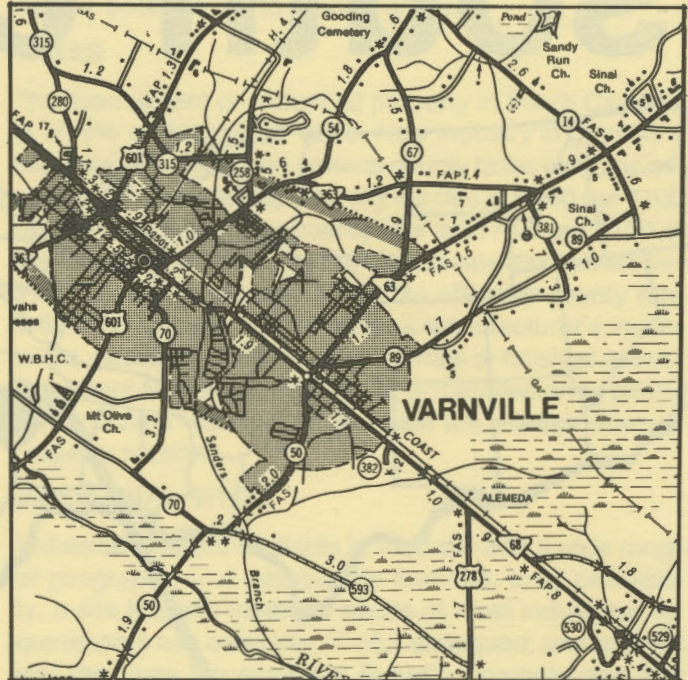
Hampton General Hospital



U. S. Post Office

LOCATION

As depicted on the cover, Varnville is in the southern section of the state in Hampton County. Charleston, South Carolina's busiest port, is 70 miles east. Columbia is 78 miles north and Greenville is 174 miles northwest. Varnville is 235 miles east of Atlanta; 775 miles south of New York; and 2,758 miles east of San Francisco.



POPULATION

The 1980 census population of the city of Varnville was 1,948. This was a 25.3% increase from the 1970 population of 1,555. The population within a 15-mile radius is 25,119 and within a 30-mile radius is 92,269.

Hampton County had a 1980 census population of 18,159, a 14.4% increase over the 1970 population of 15,878. The 1981 estimated county population is 18,600 and the 1990 projected population is 21,000.

CLIMATE

The climate in the Varnville area is temperate with a mean annual temperature of 65.9° F. The average temperature during January is 49.9° F, while the average July temperature is 81.1° F. The average relative humidity daily is 83% at 1:00 a.m.; 86% at 7:00 a.m.; 54% at 1:00 p.m.; 68% at 7:00 p.m.

The mean annual precipitation in the Varnville area is 51.15 inches and the average growing season is 238 days. The elevation of Varnville is 100 feet above sea level.

COMMUNICATIONS

One weekly, *The Hampton Guardian*, is published in the county, and four large dailies circulate in Varnville. Radio stations WBHC-AM and WJBW-FM provide broadcast coverage for the area. Television reception is available from eight stations, representing the three major networks and ETV. Telephone service is provided by the United Telephone Company of the Carolinas.

GOVERNMENT

The community has a mayor-council form of municipal government. The six city council members and the mayor are elected for four-year terms. Hampton County is governed locally by a council-administrator, whose five council members are elected for four-year terms.

POLICE AND FIRE

The Varnville Police Department has 4 full-time police officers. The department operates two radio equipped patrol cars. The Varnville Fire Department has three full-time and 14 volunteer firemen who operate two pumper and one tanker trucks. Varnville's insurance rating is Class 7.

FINANCIAL INSTITUTIONS

Financial services for Varnville are provided by one bank and one savings and loan association which are located in Hampton. The bank has total assets of \$29 million, while the savings and loan has assets of \$112 million.

HOTELS AND MOTELS

Over 200 motel rooms are available in Allendale, 17 miles away.

CHURCHES

Varnville has 15 Protestant churches. A Catholic church is located in Hampton, two miles away, and a Jewish house of worship is located in Walterboro, 26 miles from Varnville.

EDUCATION

Varnville, which is included in Hampton District #1, has one elementary school and one middle school. The student/teacher ratio is 17.7 to 1, with 36 teachers and 637 students. Private schooling is available in the area.

Higher education facilities are provided by the Salkehatchie Regional Campus of the University of South Carolina, located in Allendale, 17 miles away. Savannah, 63 miles away, has two four-year colleges. The Orangeburg-Calhoun Technical College is within 50 miles of Varnville. A Manpower Technical Center is located in the county.

MEDICAL SERVICES

Medical services are provided by the 68-bed Hampton General Hospital. Specialized medical treatment facilities are located in Charleston, 70 miles away. Five privately-practicing medical doctors and four privately-practicing dentists are located in Hampton, two miles away.

RECREATION AND CIVIC FACILITIES

Recreation facilities consist of a city park with picnic facilities, a pool, dance pavilion, and skating rink. The Hampton County Country Club, two miles away, has an 18-hole golf course. Lake Warren, seven miles away, is a county-owned and state-operated fishing area. Varnville and the adjacent community of Hampton sponsor a sum-

mer recreation program with organized competition in baseball, softball, football and tennis. Varnville is within an hour's drive of several resort communities on the South Carolina Coast.

POWER

Electric power is available to the community and surrounding areas from South Carolina Electric & Gas Company and Palmetto Electric Cooperative. For 1984 SCE&G projects reserve capacity to system coincidental peak of 32%. The company's total generating capacity is 3,959 megawatts. An additional 550 megawatts of coal fired generation is scheduled for 1989. SCE&G plans to have sufficient reserves to meet immediate and future electrical needs of its service area. In addition SCE&G maintains inter-tie connections with four neighboring utilities.

Electric Power for Palmetto Electric Cooperative is supplied by Central Electric Power Cooperative and South Carolina Public Service Authority. The generation capacity of plants in operation or under construction totals over 3,000 megawatts with approximately 73% produced from coal. Inter-tie connections are maintained with neighboring power supplies.

FUELS

Natural gas is supplied by South Carolina Electric & Gas Company.

WATER

The community obtains its municipal water supply from three deep wells. The system is capable of supplying water at a maximum rate of 580,000 gallons per day, with an average daily demand of 200,000 gallons. Treated water storage consists of 275,000 gallons in elevated storage.

Analysis of water supplied in the community:

Total solids	NA
Alkalinity	140 mg/L
Calcium	4.3 mg/L
Hardness	16 mg/L
Iron	.1 mg/L
pH	8.6

SEWER

Varnville obtains its sewer service from the Hampton Treatment Plant which utilizes an intermittent sand filter system. The treatment system has a capacity of 1.6 million gpd, with present usage equal to 213,000 gpd.

LABOR

Because labor information may change in this area, a current labor availability report prepared and kept up to date by the S. C. State Development Board will be furnished to prospective manufacturers at their request. The comprehensive report will include sources of recruitable labor, labor force characteristics, work force skill levels, earnings data and other pertinent information. The S. C. State

Board for Technical and Comprehensive Education has the resources to recruit and train workers in accordance with a company's entry criteria. This training is at little or no cost to the employer. A lead-time schedule is developed to coordinate recruiting, testing, selecting, and training. This assures that persons will be able to move from training to their respective jobs at the time the plant is ready for initial production.

TRANSPORTATION

Varnville is served by one interstate highway, I-95 (15 miles away), one United States highway and one South Carolina highway. The community is served by the Seaboard System Railroad. Varnville is served by 26 authorized motor carriers.

Freight Delivery Times:

To:	By Rail:	By Truck:
Atlanta	3 days	1 day
Boston	6 days	4 days
Chicago	6 days	3 days
Houston	9 days	3 days
New York	4 days	3 days
St. Louis	6 days	2 days
San Francisco	12 days	5 days

The Savannah Municipal Airport, 63 miles away, offers regularly scheduled commercial airline service on American, New York, Delta, Eastern and Piedmont. Private aircraft utilize the Hampton-Varnville Airport, two miles away, which has a paved and lighted 3,580-foot runway. Services available at the airport are hangars, tie-downs, RBn, 100 fuel, Unicom and Abvortac.

MAJOR EMPLOYERS

Name	Product or Service	Employees
Coastal Engineered Products Co., Inc.	Misc. plastic products, electrical devices	21
D & B Mfg. Co., Inc.	Children's athletic wear	58
Embler Door Company, Inc.	Flush doors	84
Georgia-Pacific Corp.	Lumber	97
GEMCO of S.C.	Ladies' shoes	150

FOR ADDITIONAL INFORMATION CONTACT:

SOUTH CAROLINA STATE DEVELOPMENT BOARD
 P. O. Box 927, Columbia, South Carolina 29202
 (803) 758-3145

FOREIGN TRADE ZONE

A Foreign Trade Zone is located in Summerville, South Carolina, 25 miles from the Port of Charleston and 45 miles from the community. The Foreign Trade Zone allows manufacturers to store, manufacture, or process goods without paying U.S. Customs duties or worrying about quota compliance. This Foreign Trade Zone is served by a multimode transportation network which provides excellent accessibility to market areas.

TAXES

The assessment on industrial property in South Carolina is 10.5% of the market value. New industry is granted a five-year moratorium on general county taxes (with the exception of school taxes). The city tax rate is \$4.00 per \$100 of assessed value. The county rate is \$17.00 per \$100 of assessed value. The effective city tax rate (tax liability per \$100 of market value) is \$.42. The effective county rate is \$1.79. The state has no tax on a manufacturer's inventories, goods-in-process, raw materials or finished goods. Treatment facilities or equipment of manufacturing plants which control water or air pollution are exempt from all property taxation.

INDUSTRIAL SITES

Industrial sites are available in Varnville with a wide range of geographic and topographic features. In all probability, a site that will meet the needs of most industries' requirements has been identified, catalogued, and entered into the State Development Board's Computerized Site Selection System. Detailed site information will be furnished upon request.

