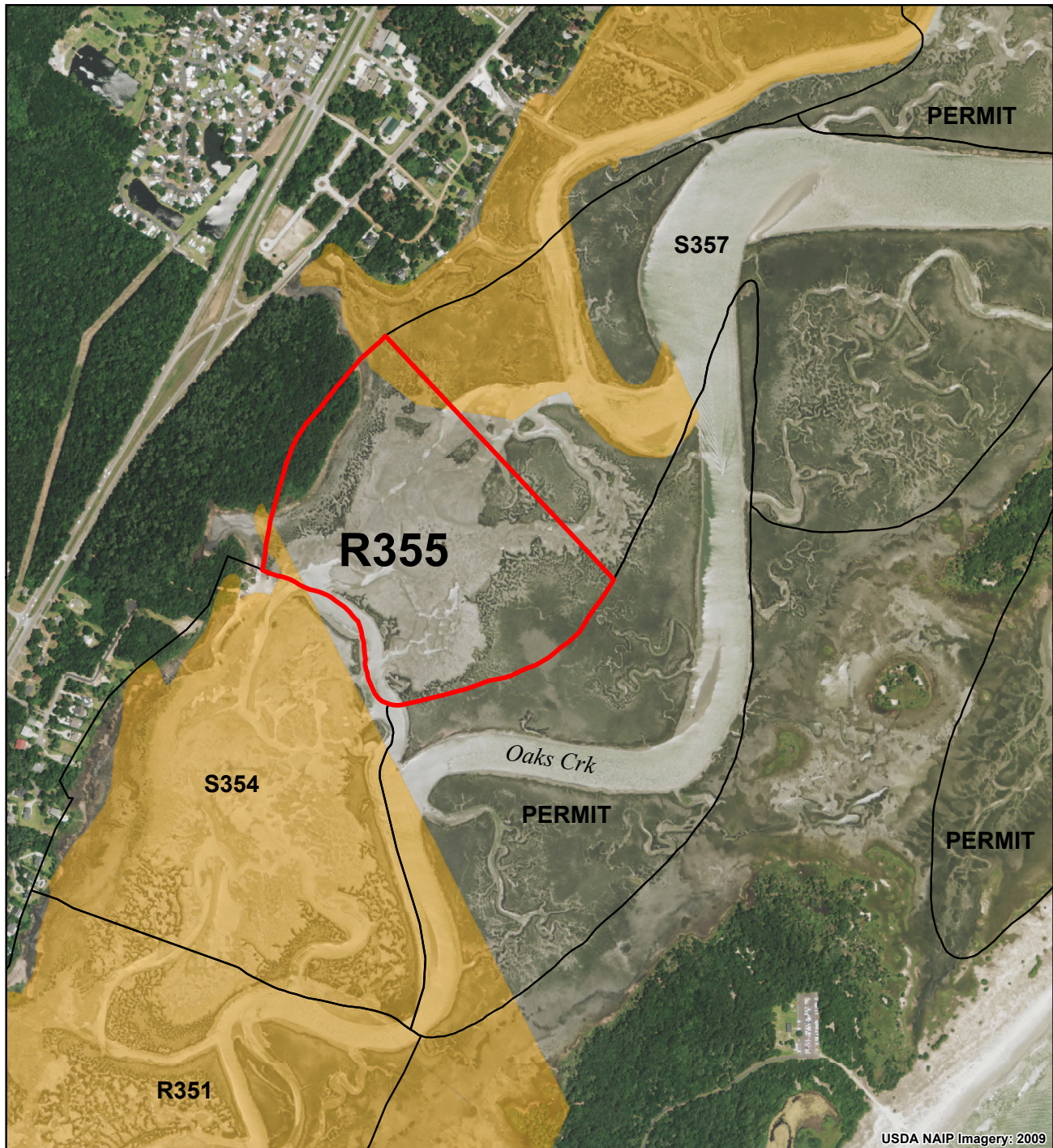


Lachicotte Oyster Factory PSG - R355

R355 is within SCDHEC Shellfish Management Area 4. These areas are subject to closure at any time. Please call (800)285-1618

Clams - Partially Closed SCDHEC
Oysters - Partially Closed SCDHEC

LOCATION: Portion of a tributary of Oaks Creek
COUNTY: Georgetown



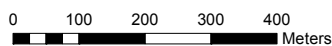
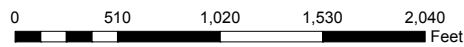
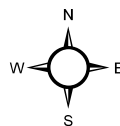
Legend

SHELLFISH HARVEST BOUNDARIES

- R061
- NEIGHBORING AREAS
- PERMIT = COMMERCIAL PERMIT
- R000 = RECREATIONAL SHELLFISH GROUND
- S000 = STATE SHELLFISH GROUND

WATER QUALITY (SCDHEC)

- PROHIBITED
- RESTRICTED
- CONDITIONALLY APPROVED



PRODUCED BY:
SOUTH CAROLINA DEPARTMENT OF NATURAL RESOURCES
OFFICE OF FISHERIES MANAGEMENT
SHELLFISH MANAGEMENT SECTION
08/2011

