

SCSL Digital Collections

Infant mortality and selected birth characteristics : 2000 South Carolina residence data

Item Type	Text
Publisher	South Carolina State Library
Rights	Copyright status undetermined. For more information contact, South Carolina State Library, 1500 Senate Street, Columbia, South Carolina 29201.
Download date	2024-10-05 11:03:08
Link to Item	http://hdl.handle.net/10827/28934



Infant Mortality and Selected Birth Characteristics



2000 South Carolina Residence Data

October 2001

**South Carolina Department of Health and Environmental Control
Office of Public Health Statistics and Information Services
Division of Biostatistics
2600 Bull Street
Columbia, SC 29201**

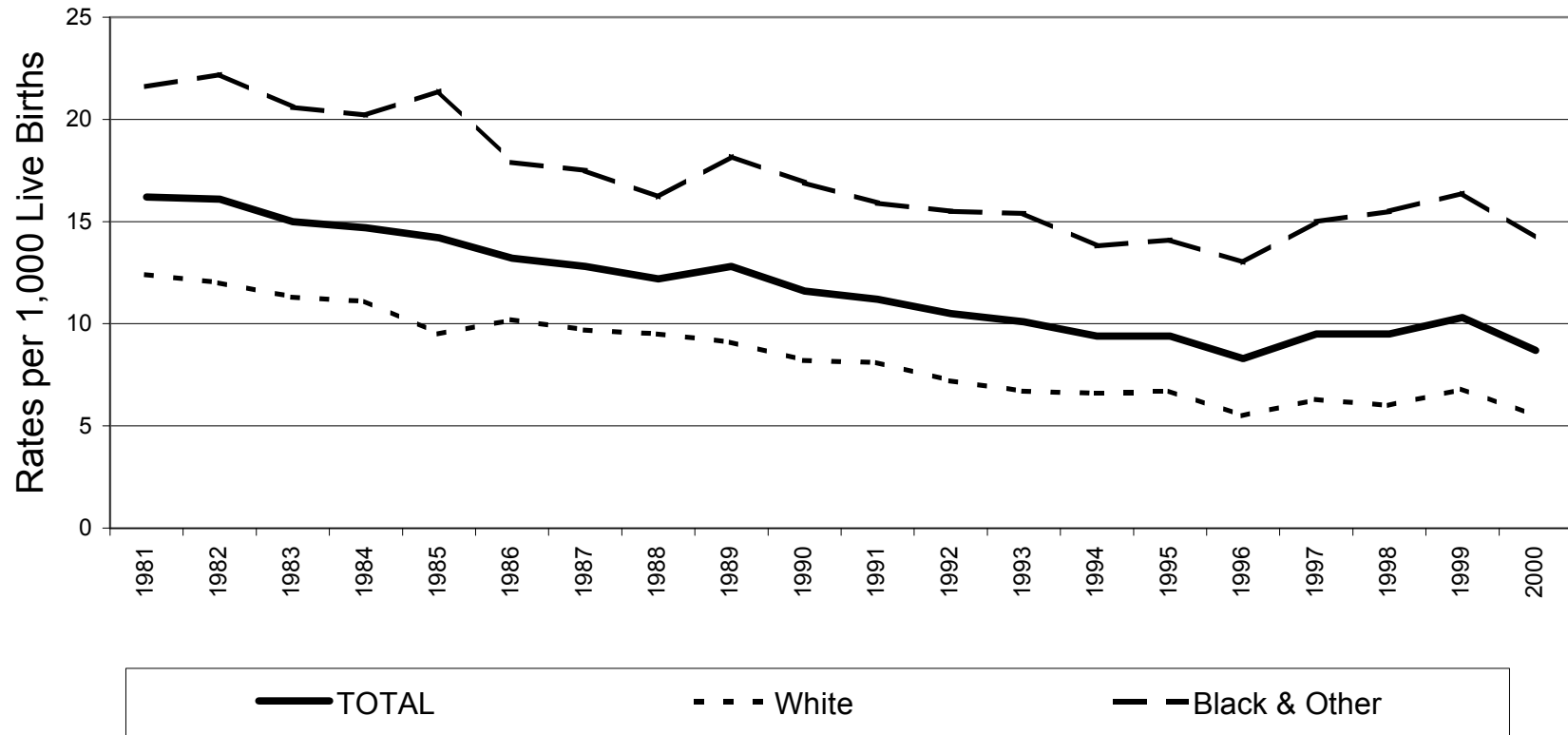
**Phone: (803)898-3649
Fax: (803)898-3661**



RATE CALCULATIONS WITH SMALL NUMBERS

Variations, which result from chance, exist in all statistics. This fact is of particular importance in the calculation of rates with small numbers of events (here, infant deaths) where these variations are proportionately large in relation to the population at risk (here, live births). As an example, small changes in the number of deaths or births in small population areas (here, small counties) could result in large variations in these crude rates. For this reason, ***rates for counties with small populations should be used cautiously***. Three-year infant mortality rates are calculated to ensure that these rates are less influenced by chance variations, thus making them more stable and more appropriate for trend comparisons.

South Carolina Infant Mortality Rates¹ by Race² Residence Data, 1981-2000



	1981	1982	1983	1984	1985	1986	1987	1988	1989	1990	1991	1992	1993	1994	1995	1996	1997	1998	1999	2000
TOTAL	16.2	16.1	15.0	14.7	14.2	13.2	12.8	12.2	12.8	11.6	11.2	10.5	10.1	9.4	9.4	8.3	9.5	9.5	10.3	8.7
White	12.4	12.0	11.3	11.1	9.5	10.2	9.7	9.5	9.1	8.2	8.1	7.2	6.7	6.6	6.7	5.5	6.3	6.0	6.8	5.5
Black & Other	21.6	22.2	20.6	20.2	21.4	17.9	17.5	16.2	18.2	16.9	15.9	15.5	15.4	13.8	14.1	13.0	15.0	15.5	16.4	14.2

¹Rates per 1,000 live births

²Race of infant (1981-1989); Race of mother (1990-2000)

Table 1.
 Infant Mortality Rates¹ with 95% Confidence Intervals²
 South Carolina, 1981-2000
 (Residence Data)

Year	Number of Live Births	Number of Infant Deaths	Infant Mortality Rate	95% Confidence Intervals
1981	51,745	836	16.2	(15.1, 17.3)
1982	51,554	832	16.1	(15.0, 17.2)
1983	50,731	760	15.0	(13.9, 16.1)
1984	50,561	743	14.7	(13.6, 15.8)
1985	51,846	735	14.2	(13.2, 15.2)
1986	51,726	685	13.2	(12.2, 14.2)
1987	52,774	673	12.8	(11.8, 13.8)
1988	55,090	673	12.2	(11.3, 13.1)
1989	57,239	731	12.8	(11.9, 13.7)
1990	58,461	679	11.6	(10.7, 12.5)
1991	57,517	644	11.2	(10.3, 12.1)
1992	56,102	588	10.5	(9.7, 11.3)
1993	53,715	544	10.1	(9.3, 11.0)
1994	51,907	486	9.4	(8.5, 10.2)
1995	50,913	480	9.4	(8.6, 10.2)
1996	51,105	424	8.3	(7.5, 9.1)
1997	52,205	494	9.5	(8.7, 10.3)
1998	53,833	511	9.5	(8.7, 10.3)
1999	54,706	564	10.3	(9.4, 11.2)
2000	55,964	488	8.7	(7.9, 9.5)

Table 2.
 Infant Mortality Rates¹ with 95% Confidence Intervals²
 South Carolina
 1981-1985, 1986-1990, 1991-1995, 1996-2000
 (Residence Data)

Years	Number of Live Births	Number of Infant Deaths	Infant Mortality Rate	95% Confidence Intervals
1981-1985	256,437	3,906	15.2	(14.7, 15.7)
1986-1990	275,290	3,441	12.5	(12.1, 12.9)
1991-1995	270,154	2,742	10.1	(9.7, 10.5)
1996-2000	267,813	2,481	9.3	(8.9, 9.7)

¹Rates per 1,000 live births

² $r \pm 61.981 (r/n)^{1/2}$, where r = infant mortality rate and n = number of live births

Table 3.Infant, Neonatal and Postneonatal Mortality and Mortality Rates¹ by Race²

South Carolina

1996, 1997, 1998, 1999 and 2000

(Residence Data)

Infant Mortality									
Year	Total			White			Black & Other		
	Number of Live Birth	Number of Infant Death	Rate	Number of Live Birth	Number of Infant Death	Rate	Number of Live Birth	Number of Infant Death	Rate
1996	51,105*	424	8.3	32,309	179	5.5	18,788	245	13.0
1997	52,205*	494	9.5	33,011	207	6.3	19,192	287	15.0
1998	53,833*	511	9.5	34,065	204	6.0	19,757	307	15.5
1999	54,706*	564	10.3	34,683	236	6.8	20,004	328	16.4
2000	55,964*	488	8.7	35,146	192	5.5	20,803	296	14.2

Neonatal Mortality (<28 days)									
Year	Total			White			Black & Other		
	Number of Live Birth	Number of Infant Death	Rate	Number of Live Birth	Number of Infant Death	Rate	Number of Live Birth	Number of Infant Death	Rate
1996	51,105*	286	5.6	32,309	111	3.4	18,788	175	9.3
1997	52,205*	352	6.7	33,011	149	4.5	19,192	203	10.6
1998	53,833*	358	6.7	34,065	132	3.9	19,757	226	11.4
1999	54,706*	394	7.2	34,683	154	4.4	20,004	240	12.0
2000	55,964*	340	6.1	35,146	135	3.8	20,803	205	9.9

Postneonatal Mortality (28-364 days)									
Year	Total			White			Black & Other		
	Number of Live Birth	Number of Infant Death	Rate	Number of Live Birth	Number of Infant Death	Rate	Number of Live Birth	Number of Infant Death	Rate
1996	51,105*	138	2.7	32,309	68	2.1	18,788	70	3.7
1997	52,205*	142	2.7	33,011	58	1.8	19,192	84	4.4
1998	53,833*	153	2.8	34,065	72	2.1	19,757	81	4.1
1999	54,706*	170	3.1	34,683	82	2.4	20,004	88	4.4
2000	55,964*	148	2.6	35,146	57	1.6	20,803	91	4.4

¹Rates per 1,000 live births²Race of mother

*Includes unknown race

Table 4.
Infant Mortality and Infant Mortality Rates¹
South Carolina and Each County, 2000, 1998-2000, 1995-1997
(Residence Data)

County of Residence	2000		1998-2000		1995-1997	
	Number	Rate	Number	Rate	Number	Rate
South Carolina	488	8.7	1,563	9.5	1,398	9.1
Abbeville	3	8.9	9	8.7	8	7.9
Aiken	17	9.2	45	8.2	44	7.9
Allendale	3	17.2	6	11.5	7	13.8
Anderson	21	9.5	77	11.7	50	8.0
Bamberg	3	12.9	8	12.1	5	7.6
Barnwell	7	21.2	16	15.8	4	4.1
Beaufort	7	3.7	28	5.3	37	7.7
Berkeley	15	7.1	53	8.4	50	8.4
Calhoun	2	10.4	6	11.4	5	10.2
Charleston	30	6.5	127	9.4	153	12.4
Cherokee	4	5.1	16	7.3	25	12.0
Chester	5	9.7	17	11.8	13	9.5
Chesterfield	7	11.3	23	13.2	14	8.2
Clarendon	6	13.6	21	16.7	8	7.0
Colleton	1	1.7	13	7.8	12	7.6
Darlington	11	11.5	37	13.2	32	11.9
Dillon	7	13.5	12	8.2	15	10.5
Dorchester	13	10.6	35	10.0	37	10.6
Edgefield	5	17.4	18	20.7	7	8.9
Fairfield	2	5.8	14	14.2	4	4.2
Florence	23	12.3	66	11.7	47	9.0
Georgetown	12	15.6	24	10.3	24	11.4
Greenville	29	5.4	104	6.5	103	7.1
Greenwood	10	10.5	35	12.3	39	14.6
Hampton	5	16.6	10	11.0	8	9.0
Horry	23	9.0	58	8.0	60	9.8
Jasper	2	7.0	5	6.0	8	9.4
Kershaw	3	4.1	12	5.7	14	7.4
Lancaster	12	14.5	26	10.7	22	9.8
Laurens	6	7.3	25	9.8	24	9.9
Lee	4	15.2	14	17.9	13	18.3
Lexington	26	8.7	72	8.0	50	5.9
McCormick	1	10.4	5	19.5	3	10.9
Marion	5	9.5	22	14.6	20	13.8
Marlboro	7	16.1	16	12.3	12	9.7
Newberry	2	4.0	13	8.7	8	6.1
Oconee	7	9.1	19	8.1	14	6.2
Orangeburg	21	16.0	55	14.0	51	14.2
Pickens	7	5.3	27	6.7	31	8.2
Richland	39	8.7	134	10.2	91	7.4
Saluda	2	7.8	11	14.3	9	13.0
Spartanburg	22	6.6	69	7.0	68	6.9
Sumter	15	8.6	52	10.2	70	14.3
Union	6	16.0	12	10.5	15	13.5
Williamsburg	8	14.7	24	15.0	19	12.6
York	22	9.6	71	10.8	45	7.5

¹Rates per 1,000 live births. Rates calculated with 20 or fewer deaths are unreliable and should be used cautiously.

■ Reliable rates with more than 20 infant deaths

Table 4-A.
White¹ Infant Mortality and Infant Mortality Rates²
South Carolina and Each County, 2000, 1998-2000, 1995-1997
(Residence Data)

County of Residence	2000		1998-2000		1995-1997	
	Number	Rate	Number	Rate	Number	Rate
South Carolina	192	5.5	632	6.1	598	6.2
Abbeville	–	0	3	4.4	2	3.1
Aiken	10	8.2	21	5.7	27	7.0
Allendale	2	71.4	2	22.7	1	10.0
Anderson	11	6.5	51	10.0	30	6.2
Bamberg	–	0	–	0	–	0
Barnwell	2	14.3	6	12.9	2	4.1
Beaufort	2	1.5	13	3.5	19	5.9
Berkeley	6	4.1	25	5.6	22	5.3
Calhoun	–	0	1	4.6	1	4.6
Charleston	9	3.5	35	4.6	49	7.0
Cherokee	4	6.8	10	6.1	13	8.5
Chester	1	3.9	6	8.0	1	1.4
Chesterfield	2	5.8	6	5.9	2	2.0
Clarendon	–	0	4	8.4	1	2.1
Colleton	–	0	4	4.5	2	2.5
Darlington	2	4.5	10	7.7	6	4.7
Dillon	–	0	3	4.7	2	3.6
Dorchester	6	7.0	16	6.5	16	6.4
Edgefield	2	12.6	3	6.5	2	5.0
Fairfield	1	9.8	3	9.6	–	0
Florence	4	4.3	16	5.5	13	4.7
Georgetown	2	4.9	5	4.1	12	12.0
Greenville	22	5.3	68	5.6	66	5.9
Greenwood	1	1.8	18	10.1	13	8.0
Hampton	–	0	2	5.9	3	9.0
Horry	9	4.8	25	4.6	32	7.0
Jasper	2	14.1	3	7.8	3	8.2
Kershaw	2	3.8	5	3.4	8	6.2
Lancaster	6	10.8	13	7.9	10	6.5
Laurens	4	7.0	9	5.1	19	11.6
Lee	1	16.4	4	22.5	3	16.8
Lexington	19	7.9	53	7.3	32	4.6
McCormick	–	0	–	0	1	10.9
Marion	–	0	–	0	5	9.9
Marlboro	3	16.2	5	9.4	2	3.9
Newberry	2	6.8	5	5.6	6	8.3
Oconee	6	8.8	14	6.8	13	6.6
Orangeburg	3	7.2	9	6.9	9	7.6
Pickens	7	5.7	24	6.4	31	9.1
Richland	10	5.3	26	4.6	21	3.8
Saluda	–	0	5	9.9	3	7.0
Spartanburg	12	4.8	39	5.3	48	6.7
Sumter	3	3.6	15	6.1	15	6.2
Union	1	4.7	4	5.7	7	10.6
Williamsburg	–	0	2	4.8	–	0
York	13	7.6	41	8.4	25	5.5

¹Race of mother

²Rates per 1,000 live births. Rates calculated with 20 or fewer deaths are unreliable and should be used cautiously.

■ Reliable rates with more than 20 infant deaths

Table 4-B.
Black and Other¹ Infant Mortality and Infant Mortality Rates²
South Carolina and Each County, 2000, 1998-2000, 1995-1997
(Residence Data)

County of Residence	2000		1998-2000		1995-1997	
	Number	Rate	Number	Rate	Number	Rate
South Carolina	296	14.2	931	15.4	800	14.0
Abbeville	3	27.0	6	16.9	6	17.0
Aiken	7	11.2	24	13.5	17	10.0
Allendale	1	6.8	4	9.3	6	14.7
Anderson	10	18.9	26	17.7	20	14.1
Bamberg	3	19.4	8	18.0	5	11.4
Barnwell	5	26.3	10	18.3	2	4.1
Beaufort	5	9.2	15	9.5	18	11.4
Berkeley	9	14.1	28	14.8	28	15.7
Calhoun	2	18.0	5	16.1	4	14.5
Charleston	21	10.5	92	15.8	104	19.5
Cherokee	—	0	6	10.9	12	21.6
Chester	4	15.6	11	15.9	12	18.4
Chesterfield	5	18.4	17	23.1	12	16.4
Clarendon	6	21.9	17	21.7	7	10.4
Colleton	1	3.5	9	11.7	10	12.7
Darlington	9	17.8	27	17.9	26	18.5
Dillon	7	24.7	9	10.9	13	14.8
Dorchester	7	18.9	19	18.6	21	20.9
Edgefield	3	23.3	15	36.9	5	12.8
Fairfield	1	4.2	11	16.4	4	6.4
Florence	19	20.3	50	18.5	34	13.8
Georgetown	10	27.4	19	17.2	12	10.9
Greenville	7	5.6	36	9.8	37	10.6
Greenwood	9	23.4	17	16.0	26	25.0
Hampton	5	28.4	8	14.1	5	9.0
Horry	14	20.5	33	17.7	28	18.2
Jasper	—	0	2	4.5	5	10.3
Kershaw	1	5.0	7	11.1	6	9.8
Lancaster	6	21.7	13	16.4	12	17.1
Laurens	2	7.9	16	20.6	5	6.5
Lee	3	14.8	10	16.5	10	18.8
Lexington	7	12.0	19	11.0	18	11.3
McCormick	1	16.1	5	28.6	2	11.0
Marion	5	15.4	22	22.8	15	15.9
Marlboro	4	16.1	11	14.3	10	13.9
Newberry	—	0	8	13.2	2	3.4
Oconee	1	12.0	5	17.5	1	3.4
Orangeburg	18	20.1	46	17.4	42	17.4
Pickens	—	0	3	9.1	—	0
Richland	29	11.3	108	14.5	70	10.3
Saluda	2	21.5	6	22.9	6	22.4
Spartanburg	10	11.6	30	11.7	20	7.6
Sumter	12	13.2	37	13.9	55	22.5
Union	5	31.1	8	18.0	8	17.9
Williamsburg	8	20.5	22	18.7	19	17.0
York	9	15.1	30	17.9	20	13.6

¹Race of mother

²Rates per 1,000 live births. Rates calculated with 20 or fewer deaths are unreliable and should be used cautiously.

■ Reliable rates with more than 20 infant deaths

Table 5.

Infant, Neonatal and Postneonatal Mortality Rates¹ by Race²
and Percent Changes from 1999 to 2000

South Carolina
(Residence Data)

Infant Mortality			
Year	Total	White	Black & Other
1999	10.3	6.8	16.4
2000	8.7	5.5	14.2
Percent Change	-15.5%	-19.1%	-13.4%

Neonatal Mortality			
Year	Total	White	Black & Other
1999	7.2	4.4	12.0
2000	6.0	3.8	9.9
Percent Change	-16.7%	-13.6%	-17.5%

Postneonatal Mortality			
Year	Total	White	Black & Other
1999	3.1	2.4	4.4
2000	2.6	1.6	4.4
Percent Change	-16.1%	-33.3%	0.0%

¹Rates per 1,000 live births

²Race of mother

Table 6.
Neonatal Mortality and Neonatal Mortality Rates¹
South Carolina and Each County, 2000, 1998-2000, 1995-1997
(Residence Data)

County of Residence	2000		1998-2000		1995-1997	
	Number	Rate	Number	Rate	Number	Rate
South Carolina	340	6.1	1,092	6.6	966	6.3
Abbeville	3	8.9	7	6.7	6	6.0
Aiken	11	5.9	25	4.6	23	4.1
Allendale	2	11.5	4	7.7	6	11.8
Anderson	15	6.8	53	8.1	36	5.8
Bamberg	3	12.9	3	4.5	4	6.1
Barnwell	4	12.1	7	6.9	2	2.1
Beaufort	4	2.1	16	3.0	30	6.2
Berkeley	12	5.7	41	6.5	33	5.6
Calhoun	2	10.4	5	9.5	5	10.2
Charleston	24	5.2	94	7.0	117	9.5
Cherokee	2	2.6	9	4.1	17	8.2
Chester	3	5.8	10	6.9	7	5.1
Chesterfield	7	11.3	19	10.9	8	4.7
Clarendon	4	9.1	16	12.7	7	6.1
Colleton	1	1.7	10	6.0	6	3.8
Darlington	9	9.4	27	9.6	20	7.4
Dillon	6	11.6	9	6.1	8	5.6
Dorchester	9	7.3	23	6.6	27	7.7
Edgefield	3	10.4	14	16.1	7	8.9
Fairfield	1	2.9	12	12.2	1	1.1
Florence	16	8.6	48	8.5	25	4.8
Georgetown	9	11.7	15	6.5	18	8.6
Greenville	16	3.0	70	4.4	65	4.5
Greenwood	10	10.5	31	10.9	33	12.4
Hampton	3	9.9	6	6.6	5	5.6
Horry	16	6.2	37	5.1	42	6.9
Jasper	—	0	1	1.2	5	5.9
Kershaw	3	4.1	9	4.3	11	5.8
Lancaster	8	9.6	19	7.8	18	8.0
Laurens	4	4.9	19	7.4	15	6.2
Lee	4	15.2	12	15.3	10	14.0
Lexington	19	6.3	54	6.0	34	4.0
McCormick	1	10.4	4	15.6	2	7.3
Marion	4	7.6	17	11.3	13	9.0
Marlboro	3	6.9	10	7.7	8	6.5
Newberry	2	4.0	8	5.3	6	4.6
Oconee	4	5.2	15	6.4	10	4.4
Orangeburg	16	12.2	41	10.4	34	9.5
Pickens	1	0.8	14	3.5	20	5.3
Richland	25	5.6	91	6.9	66	5.4
Saluda	—	0	8	10.4	7	10.1
Spartanburg	11	3.3	40	4.0	37	3.8
Sumter	11	6.3	33	6.4	56	11.5
Union	6	16.0	10	8.8	11	9.9
Williamsburg	7	12.9	19	11.9	13	8.6
York	16	7.0	56	8.5	32	5.3

¹Rates per 1,000 live births. Rates calculated with 20 or fewer deaths are unreliable and should be used cautiously.

■ Reliable rates with more than 20 infant deaths

Table 6-A.
White¹ Neonatal Mortality and Neonatal Mortality Rates²
South Carolina and Each County, 2000, 1998-2000, 1995-1997
(Residence Data)

County of Residence	2000		1998-2000		1995-1997	
	Number	Rate	Number	Rate	Number	Rate
South Carolina	135	3.8	421	4.1	399	4.1
Abbeville	—	0	2	2.9	1	1.5
Aiken	8	6.6	12	3.3	16	4.1
Allendale	2	71.4	2	22.7	1	10.0
Anderson	7	4.1	36	7.1	23	4.8
Bamberg	—	0	—	0	—	0
Barnwell	1	7.1	2	4.3	1	2.1
Beaufort	1	0.7	8	2.2	14	4.3
Berkeley	5	3.4	19	4.3	11	2.6
Calhoun	—	0	—	0	1	4.6
Charleston	8	3.1	22	2.9	32	4.6
Cherokee	2	3.4	6	3.7	9	5.9
Chester	1	3.9	5	6.7	—	0
Chesterfield	2	5.8	4	4.0	2	2.0
Clarendon	—	0	2	4.2	1	2.1
Colleton	—	0	2	2.3	1	1.3
Darlington	2	4.5	8	6.2	4	3.1
Dillon	—	0	1	1.6	1	1.8
Dorchester	6	7.0	10	4.0	13	5.2
Edgefield	—	0	—	0	2	5.0
Fairfield	1	9.8	3	9.6	—	0
Florence	3	3.2	11	3.8	7	2.5
Georgetown	2	4.9	3	2.5	6	6.0
Greenville	11	2.7	42	3.4	36	3.2
Greenwood	1	1.8	14	7.8	9	5.5
Hampton	—	0	—	0	2	6.0
Horry	7	3.7	17	3.2	24	5.3
Jasper	—	0	1	2.6	2	5.4
Kershaw	2	3.8	2	1.4	8	6.2
Lancaster	6	10.8	13	7.9	7	4.5
Laurens	3	5.3	5	2.8	13	7.9
Lee	1	16.4	4	22.5	3	16.8
Lexington	15	6.2	39	5.4	21	3.0
McCormick	—	0	—	0	1	10.9
Marion	—	0	—	0	3	6.0
Marlboro	1	5.4	2	3.7	2	3.9
Newberry	2	6.8	4	4.5	4	5.6
Oconee	4	5.8	12	5.8	10	5.1
Orangeburg	2	4.8	5	3.8	7	5.9
Pickens	1	0.8	13	3.5	20	5.9
Richland	8	4.2	18	3.2	17	3.1
Saluda	—	0	5	9.9	3	7.0
Spartanburg	8	3.2	24	3.3	28	3.9
Sumter	2	2.4	9	3.7	11	4.5
Union	1	4.7	3	4.3	4	6.1
Williamsburg	—	0	2	4.8	—	0
York	9	5.3	29	5.9	18	4.0

¹Race of mother

²Rates per 1,000 live births. Rates calculated with 20 or fewer deaths are unreliable and should be used cautiously.

■ Reliable rates with more than 20 infant deaths

Table 6-B.
Black and Other¹ Neonatal Mortality and Neonatal Mortality Rates²
South Carolina and Each County, 2000, 1998-2000, 1995-1997
(Residence Data)

County of Residence	2000		1998-2000		1995-1997	
	Number	Rate	Number	Rate	Number	Rate
South Carolina	205	9.9	671	11.1	567	9.9
Abbeville	3	27.0	5	14.0	5	14.2
Aiken	3	4.8	13	7.3	7	4.1
Allendale	—	0	2	4.6	5	12.2
Anderson	8	15.2	17	11.6	13	9.2
Bamberg	3	19.4	3	6.8	4	9.1
Barnwell	3	15.8	5	9.2	1	2.0
Beaufort	3	5.5	8	5.0	16	10.1
Berkeley	7	11.0	22	11.7	22	12.3
Calhoun	2	18.0	5	16.1	4	14.5
Charleston	16	8.0	72	12.4	85	15.9
Cherokee	—	0	3	5.5	8	14.4
Chester	2	7.8	5	7.2	7	10.7
Chesterfield	5	18.4	15	20.4	6	8.2
Clarendon	4	14.6	14	17.9	6	8.9
Colleton	1	3.5	8	10.4	5	6.4
Darlington	7	13.9	19	12.6	16	11.4
Dillon	6	21.2	8	9.7	7	8.0
Dorchester	3	8.1	13	12.7	14	13.9
Edgefield	3	23.3	14	34.4	5	12.8
Fairfield	—	0	9	13.4	1	1.6
Florence	13	13.9	37	13.7	18	7.3
Georgetown	7	19.2	12	10.8	12	10.9
Greenville	5	4.0	28	7.6	29	8.3
Greenwood	9	23.4	17	16.0	24	23.1
Hampton	3	17.0	6	10.5	3	5.4
Horry	9	13.2	20	10.7	18	11.7
Jasper	—	0	—	0	3	6.2
Kershaw	1	5.0	7	11.1	3	4.9
Lancaster	2	7.2	6	7.6	11	15.7
Laurens	1	3.9	14	18.0	2	2.6
Lee	3	14.8	8	13.2	7	13.1
Lexington	4	6.8	15	8.7	13	8.2
McCormick	1	16.1	4	22.9	1	5.5
Marion	4	12.3	17	17.6	10	10.6
Marlboro	2	8.0	8	10.4	6	8.3
Newberry	—	0	4	6.6	2	3.4
Oconee	—	0	3	10.5	—	0
Orangeburg	14	15.7	36	13.6	27	11.2
Pickens	—	0	1	3.0	—	0
Richland	17	6.6	73	9.8	49	7.2
Saluda	—	0	3	11.5	4	14.9
Spartanburg	3	3.5	16	6.3	9	3.4
Sumter	9	9.9	24	9.0	45	18.4
Union	5	31.1	7	15.8	7	15.6
Williamsburg	7	17.9	17	14.4	13	11.6
York	7	11.8	27	16.1	14	9.5

¹Race of mother

²Rates per 1,000 live births. Rates calculated with 20 or fewer deaths are unreliable and should be used cautiously.

■ Reliable rates with more than 20 infant deaths

Table 7.
Postneonatal Mortality and Postneonatal Mortality Rates¹
South Carolina and Each County, 2000, 1998-2000, 1995-1997
(Residence Data)

County of Residence	2000		1998-2000		1995-1997	
	Number	Rate	Number	Rate	Number	Rate
South Carolina	148	2.6	471	2.9	432	2.8
Abbeville	—	0	2	1.9	2	2.0
Aiken	6	3.2	20	3.6	21	3.8
Allendale	1	5.7	2	3.8	1	2.0
Anderson	6	2.7	24	3.7	14	2.2
Bamberg	—	0	5	7.5	1	1.5
Barnwell	3	9.1	9	8.9	2	2.1
Beaufort	3	1.6	12	2.3	7	1.5
Berkeley	3	1.4	12	1.9	17	2.9
Calhoun	—	0	1	1.9	—	0
Charleston	6	1.3	33	2.4	36	2.9
Cherokee	2	2.6	7	3.2	8	3.8
Chester	2	3.9	7	4.9	6	4.4
Chesterfield	—	0	4	2.3	6	3.5
Clarendon	2	4.5	5	4.0	1	0.9
Colleton	—	0	3	1.8	6	3.8
Darlington	2	2.1	10	3.6	12	4.5
Dillon	1	1.9	3	2.0	7	4.9
Dorchester	4	3.3	12	3.4	10	2.9
Edgefield	2	6.9	4	4.6	—	0
Fairfield	1	2.9	2	2.0	3	3.2
Florence	7	3.8	18	3.2	22	4.2
Georgetown	3	3.9	9	3.9	6	2.9
Greenville	13	2.4	34	2.1	38	2.6
Greenwood	—	0	4	1.4	6	2.3
Hampton	2	6.6	4	4.4	3	3.4
Horry	7	2.7	21	2.9	18	3.0
Jasper	2	7.0	4	4.8	3	3.5
Kershaw	—	0	3	1.4	3	1.6
Lancaster	4	4.8	7	2.9	4	1.8
Laurens	2	2.4	6	2.3	9	3.7
Lee	—	0	2	2.6	3	4.2
Lexington	7	2.3	18	2.0	16	1.9
McCormick	—	0	1	3.9	1	3.6
Marion	1	1.9	5	3.3	7	4.8
Marlboro	4	9.2	6	4.6	4	3.2
Newberry	—	0	5	3.3	2	1.5
Oconee	3	3.9	4	1.7	4	1.8
Orangeburg	5	3.8	14	3.6	17	4.7
Pickens	6	4.5	13	3.2	11	2.9
Richland	14	3.1	43	3.3	25	2.0
Saluda	2	7.8	3	3.9	2	2.9
Spartanburg	11	3.3	29	2.9	31	3.2
Sumter	4	2.3	19	3.7	14	2.9
Union	—	0	2	1.8	4	3.6
Williamsburg	1	1.8	5	3.1	6	4.0
York	6	2.6	15	2.3	13	2.2

¹Rates per 1,000 live births. Rates calculated with 20 or fewer deaths are unreliable and should be used cautiously.

■ Reliable rates with more than 20 infant deaths

Table 7-A.

White¹ Postneonatal Mortality and Postneonatal Mortality Rates²
 South Carolina and Each County, 2000, 1998-2000, 1995-1997
 (Residence Data)

County of Residence	2000		1998-2000		1995-1997	
	Number	Rate	Number	Rate	Number	Rate
South Carolina	57	1.6	211	2.0	199	2.0
Abbeville	—	0	1	1.5	1	1.5
Aiken	2	1.6	9	2.4	11	2.8
Allendale	—	0	—	0	—	0
Anderson	4	2.4	15	2.9	7	1.5
Bamberg	—	0	—	0	—	0
Barnwell	1	7.1	4	8.6	1	2.1
Beaufort	1	0.7	5	1.3	5	1.5
Berkeley	1	0.7	6	1.4	11	2.6
Calhoun	—	0	1	4.6	—	0
Charleston	1	0.4	13	1.7	17	2.4
Cherokee	2	3.4	4	2.4	4	2.6
Chester	—	0	1	1.3	1	1.4
Chesterfield	—	0	2	2.0	—	0
Clarendon	—	0	2	4.2	—	0
Colleton	—	0	2	2.3	1	1.3
Darlington	—	0	2	1.5	2	1.6
Dillon	—	0	2	3.1	1	1.8
Dorchester	—	0	6	2.4	3	1.2
Edgefield	2	12.6	3	6.5	—	0
Fairfield	—	0	—	0	—	0
Florence	1	1.1	5	1.7	6	2.2
Georgetown	—	0	2	1.6	6	6.0
Greenville	11	2.7	26	2.1	30	2.7
Greenwood	—	0	4	2.2	4	2.5
Hampton	—	0	2	5.9	1	3.0
Horry	2	1.1	8	1.5	8	1.8
Jasper	2	14.1	2	5.2	1	2.7
Kershaw	—	0	3	2.0	—	0
Lancaster	—	0	—	0	3	1.9
Laurens	1	1.8	4	2.2	6	3.7
Lee	—	0	—	0	—	0
Lexington	4	1.7	14	1.9	11	1.6
McCormick	—	0	—	0	—	0
Marion	—	0	—	0	2	4.0
Marlboro	2	10.8	3	5.6	—	0
Newberry	—	0	1	1.1	2	2.8
Oconee	2	2.9	2	1.0	3	1.5
Orangeburg	1	2.4	4	3.1	2	1.7
Pickens	6	4.9	11	3.0	11	3.2
Richland	2	1.1	8	1.4	4	0.7
Saluda	—	0	—	0	—	0
Spartanburg	4	1.6	15	2.0	20	2.8
Sumter	1	1.2	6	2.5	4	1.6
Union	—	0	1	1.4	3	4.5
Williamsburg	—	0	—	0	—	0
York	4	2.3	12	2.5	7	1.5

¹Race of mother

²Rates per 1,000 live births. Rates calculated with 20 or fewer deaths are unreliable and should be used cautiously.

■ Reliable rates with more than 20 infant deaths

Table 7-B.

Black and Other¹ Postneonatal Mortality and Postneonatal Mortality Rates²
 South Carolina and Each County, 2000, 1998-2000, 1995-1997
 (Residence Data)

County of Residence	2000		1998-2000		1995-1997	
	Number	Rate	Number	Rate	Number	Rate
South Carolina	91	4.4	260	4.3	233	4.1
Abbeville	—	0	1	2.8	1	2.8
Aiken	4	6.4	11	6.2	10	5.9
Allendale	1	6.8	2	4.6	1	2.4
Anderson	2	3.8	9	6.1	7	5.0
Bamberg	—	0	5	11.3	1	2.3
Barnwell	2	10.5	5	9.2	1	2.0
Beaufort	2	3.7	7	4.4	2	1.3
Berkeley	2	3.1	6	3.2	6	3.4
Calhoun	—	0	—	0	—	0
Charleston	5	2.5	20	3.4	19	3.6
Cherokee	—	0	3	5.5	4	7.2
Chester	2	7.8	6	8.6	5	7.7
Chesterfield	—	0	2	2.7	6	8.2
Clarendon	2	7.3	3	3.8	1	1.5
Colleton	—	0	1	1.3	5	6.4
Darlington	2	4.0	8	5.3	10	7.1
Dillon	1	3.5	1	1.2	6	6.8
Dorchester	4	10.8	6	5.9	7	7.0
Edgefield	—	0	1	2.5	0	0.0
Fairfield	1	4.2	2	3.0	3	4.8
Florence	6	6.4	13	4.8	16	6.5
Georgetown	3	8.2	7	6.3	—	0
Greenville	2	1.6	8	2.2	8	2.3
Greenwood	—	0	—	0	2	1.9
Hampton	2	11.4	2	3.5	2	3.6
Horry	5	7.3	13	7.0	10	6.5
Jasper	—	0	2	4.5	2	4.1
Kershaw	—	0	—	0	3	4.9
Lancaster	4	14.4	7	8.8	1	1.4
Laurens	1	3.9	2	2.6	3	3.9
Lee	—	0	2	3.3	3	5.6
Lexington	3	5.1	4	2.3	5	3.1
McCormick	—	0	1	5.7	1	5.5
Marion	1	3.1	5	5.2	5	5.3
Marlboro	2	8.0	3	3.9	4	5.5
Newberry	—	0	4	6.6	—	0
Oconee	1	12.0	2	7.0	1	3.4
Orangeburg	4	4.5	10	3.8	15	6.2
Pickens	—	0	2	6.1	—	0
Richland	12	4.7	35	4.7	21	3.1
Saluda	2	21.5	3	11.5	2	7.5
Spartanburg	7	8.1	14	5.5	11	4.2
Sumter	3	3.3	13	4.9	10	4.1
Union	—	0	1	2.3	1	2.2
Williamsburg	1	2.6	5	4.2	6	5.4
York	2	3.4	3	1.8	6	4.1

¹Race of mother

²Rates per 1,000 live births. Rates calculated with 20 or fewer deaths are unreliable and should be used cautiously.

■ Reliable rates with more than 20 infant deaths

Table 8.
Leading Causes of Infant Death by Age at Death
South Carolina, 2000
(Residence Data)

Causes of Death (ICD-10 Codes)	Total	Under 1 Day	1-6 Days	7-27 Days	28-364 Days
Total Infant Deaths	488	207	75	58	148
Disorders relating to short gestation and low birthweight, NEC (P07)	95	82	8	4	1
Congenital malformations, deformations, etc. (Q00-Q99)	89	35	19	12	23
Sudden infant death syndrome (R95)	37	0	0	0	37
Newborn affected by maternal complications of pregnancy (P01)	25	24	0	1	0
Accidents (V01-X59, Y85-Y86)	22	1	1	1	19
Respiratory distress of newborn (P22)	20	8	8	4	0
Bacterial sepsis of newborn (P36)	20	1	6	11	2
Newborn affected by complications of placenta, etc. (P02)	18	15	2	1	0
Intrauterine hypoxia and birth asphyxia (P20-P21)	15	5	5	4	1
Neonatal Hemorrhage (P50-P52, P54)	10	0	9	1	0
All other causes	137	36	17	19	65

Table 8a.
 Leading Causes of White Infant Death by Age at Death
 South Carolina, 2000
 (Residence Data)

Causes of Death (ICD-10 Codes)	Total	Under 1 Day	1-6 Days	7-27 Days	28-364 Days
Total White Infant Deaths	192	65	41	29	57
Congenital malformations, deformations, etc. (Q00-Q99)	42	15	11	8	8
Disorders relating to short gestation and low birthweight, NEC (P07)	23	19	3	1	0
Sudden infant death syndrome (R95)	16	0	0	0	16
Intrauterine hypoxia and birth asphyxia (P20-P21)	11	3	5	3	0
Bacterial sepsis of newborn (P36)	11	0	5	6	0
Accidents (V01-X59, Y85-Y86)	11	1	0	0	10
Newborn affected by complications of placenta, etc. (P01)	9	9	0	0	0
Newborn affected by complication of placenta, etc. (P02)	6	4	1	1	0
Neonatal hemorrhage (P50-P52, P54)	6	0	6	0	0
Respiratory distress of newborn (P22)	5	1	2	2	0
All other causes	52	13	8	8	23

Table 8b.
 Leading Causes of Black and Other Infant Death by Age at Death
 South Carolina, 2000
 (Residence Data)

Causes of Death (ICD-10 Codes)	Total	Under 1 Day	1-6 Days	7-27 Days	28-364 Days
Total Black and Other Infant Deaths	296	142	34	29	91
Disorders relating to short gestation and low birthweight, NEC (P07)	72	63	5	3	1
Congenital malformations, deformations, etc. (Q00-Q99)	47	20	8	4	15
Sudden infant death syndrome (R95)	21	0	0	0	21
Newborn affected by maternal complications of pregnancy (P01)	16	15	0	1	0
Respiratory distress of newborn (P22)	15	7	6	2	0
Newborn affected by complications of placenta, etc. (P02)	12	11	1	0	0
Accidents (V01-X59, Y85-Y86)	11	0	1	1	9
Bacterial sepsis of newborn (P36)	9	1	1	5	2
Disease of circulatory system (I00-I99)	7	0	0	2	5
Atelectasis (P28.0-P28.1)	6	5	1	0	0
All other causes	80	20	11	11	38

Table 8c.
 Percent Changes of Leading Causes of Infant Death
 by Age at Death from 1999-2000, South Carolina

Cause of Infant Death Ranked by 2000 Data (ICD-10 Codes)	1999	2000	% Change
Total Infant Death	564	488	-13.5%
Disorders relating to short gestation and low birthweight, NEC (P07)	92	95	3.3%
Congenital malformations, deformations, etc. (Q00-Q99)	94	89	-5.3%
Sudden infant death syndrome (R95)	51	37	-27.5%
Newborn affected by maternal complications of pregnancy (P01)	38	25	-34.2%
Accidents (V01-X59, Y85-Y86)	24	22	-8.3%
Respiratory distress of newborn (P22)	28	20	-28.6%
Bacterial sepsis of newborn (P36)	18	20	11.1%
Newborn affected by complications of placenta, etc. (P02)	25	18	-28.0%
Intrauterine hypoxia and birth asphyxia (P20-P21)	10	15	50.0%
Neonatal Hemorrhage (P50-P52, P54)	6	10	66.7%
All other causes	172	137	-20.3%

Table 9.

Comparison of Characteristics from Birth Files, by Race¹
 Z-tests for differences in percentages
 South Carolina, 1999 to 2000
 (Residence Data)

	1999		2000		Z-TEST	P-VALUE
	percent	number	percent	number		

MOTHER < 18 YEARS						
TOTAL ²	5.95	3,256	5.58	3,122	-2.6638	0.0077
White	4.02	1,395	3.78	1,327	-1.6824	0.0925
Black & Other	9.29	1,859	8.62	1,794	-2.3678	0.0179

EDUCATION < 12 YEARS						
TOTAL ²	20.67	11,305	20.89	11,689	0.9086	0.3636
White	18.31	6,351	18.47	6,490	0.5261	0.5988
Black & Other	24.76	4,953	24.96	5,193	0.4736	0.6358

MARITAL STATUS: UNMARRIED						
TOTAL ²	27.11	14,832	27.06	15,146	-0.1810	0.8563
White	12.70	4,404	12.39	4,355	-1.2234	0.2212
Black & Other	52.13	10,427	51.85	10,787	-0.5487	0.5832

< 5 PRENATAL CARE VISITS						
TOTAL ²	4.61	2,520	4.60	2,574	-0.0560	0.9553
White	2.68	930	2.94	1,033	2.0602	0.0394
Black & Other	7.95	1,590	7.41	1,541	-2.0520	0.0402

PRENATAL CARE BEGAN 1st TRIMESTER						
TOTAL ²	79.36	43,416	78.59	43,982	-3.1534	0.0016
White	84.96	29,465	83.51	29,350	-5.2430	0.0000
Black & Other	69.71	13,944	70.29	14,622	1.2823	0.1997

PROPORTION VERY LOW BIRTHWEIGHT						
TOTAL ²	2.05	1,121	1.98	1,107	-0.8417	0.3999
White	1.27	440	1.27	445	-0.0294	0.9766
Black & Other	3.40	681	3.18	662	-1.2571	0.2087

PROPORTION LOW BIRTHWEIGHT						
TOTAL ²	9.86	5,393	9.67	5,412	-1.0515	0.2930
White	7.23	2,506	7.22	2,539	-0.0066	0.9947
Black & Other	14.43	2,887	13.81	2,872	-1.8170	0.0692

¹Race of mother

²Includes unknown races

Table 9. (continued)

Comparison of Characteristics from Birth Files, by Race¹
 Z-tests for differences in percentages
 South Carolina, 1999 to 2000
 (Residence Data)

	1999		2000		Z-TEST	P-VALUE
	percent	number	percent	number		

KESSNER INDEX: ADEQUATE						
TOTAL ²	70.81	38,739	69.70	39,005	-4.0620	0.0000
White	76.63	26,576	75.40	26,501	-3.7835	0.0002
Black & Other	60.77	12,157	60.07	12,496	-1.4549	0.1457

KESSNER INDEX: LESS THAN ADEQUATE						
TOTAL ²	26.08	14,265	26.94	15,074	3.2385	0.0012
White	20.42	7,081	21.43	7,532	3.2943	0.0010
Black & Other	35.91	7,183	36.24	7,538	0.6884	0.4912

KOTELCHUCK INDEX: ADEQUATE PLUS						
TOTAL ²	36.14	19,770	35.00	19,587	-3.9587	0.0001
White	36.87	12,787	35.64	12,526	-3.3759	0.0007
Black & Other	34.91	6,983	33.94	7,061	-2.0529	0.0401

KOTELCHUCK INDEX: ADEQUATE						
TOTAL ²	36.92	20,196	36.75	20,564	-0.5941	0.5524
White	39.97	13,863	39.75	13,969	-0.6071	0.5438
Black & Other	31.63	6,328	31.69	6,593	0.1278	0.8983

KOTELCHUCK INDEX: INTERMEDIATE						
TOTAL ²	11.96	6,544	12.81	7,171	4.2981	0.0000
White	12.58	4,363	12.89	4,532	1.2488	0.2117
Black & Other	10.90	2,180	12.64	2,629	5.4490	0.0000

KOTELCHUCK INDEX: INADEQUATE						
TOTAL ²	12.89	7,052	13.93	7,793	5.0478	0.0000
White	9.00	3,122	10.53	3,702	6.8151	0.0000
Black & Other	19.65	3,930	19.67	4,091	0.0492	0.9608

HISPANIC MOTHER						
TOTAL ²	3.17	1,733	4.04	2,261	7.7784	0.0000
White	4.48	1,553	5.81	2,041	7.9501	0.0000
Black & Other	0.90	180	1.06	220	1.6167	0.1060

¹Race of mother

²Includes unknown races

Table 10.
 Infant Mortality Rates¹ by Race² and Birthweight³ Group
 South Carolina
 1998, 1999 and 2000
 (Residence Data)

Infant Mortality for Very Low Birthweight (0-1499 grams)									
	Total			White			Black & Other		
Year	Number of Live Birth	Number of Infant Death	Rate	Number of Live Birth	Number of Infant Death	Rate	Number of Live Birth	Number of Infant Death	Rate
1998	1,080	299	276.9	435	105	241.4	645	194	300.8
1999	1,121	319	284.6	440	108	245.5	681	211	309.8
2000	1,107	289	261.1	445	98	220.2	662	191	288.5

Infant Mortality for Intermediate Low Birthweight (1500-2499 grams)									
	Total			White			Black & Other		
Year	Number of Live Birth	Number of Infant Death	Rate	Number of Live Birth	Number of Infant Death	Rate	Number of Live Birth	Number of Infant Death	Rate
1998	4,062	67	16.5	1,982	23	11.6	2,080	44	21.2
1999	4,272	71	16.6	2,066	35	16.9	2,206	36	16.3
2000	4,305	65	15.1	2,094	21	10.0	2,210	44	19.9

Infant Mortality for Normal Birthweight (2500+ grams)									
	Total			White			Black & Other		
Year	Number of Live Birth	Number of Infant Death	Rate	Number of Live Birth	Number of Infant Death	Rate	Number of Live Birth	Number of Infant Death	Rate
1998	48,686	139	2.9	31,648	74	2.3	17,030	65	3.8
1999	49,297	166	3.4	32,173	90	2.8	17,117	76	4.4
2000	50,549	122	2.4	32,606	67	2.1	17,931	55	3.1

¹Rates per 1,000 live births

²Race of mother

³Does not include missing birthweights

Figure 1.
 Percentage of Infant Deaths by Birthweight¹ Group
 South Carolina, 1998-2000 Residence Data

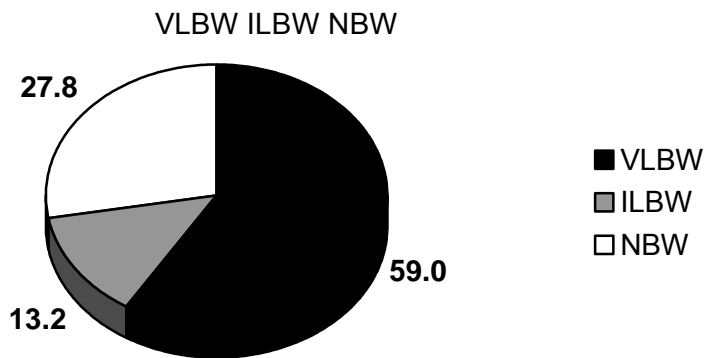


Figure 1-A.
 Percentage of Infant Deaths to White Mothers by Birthweight¹ Group
 South Carolina, 1998-2000 Residence Data

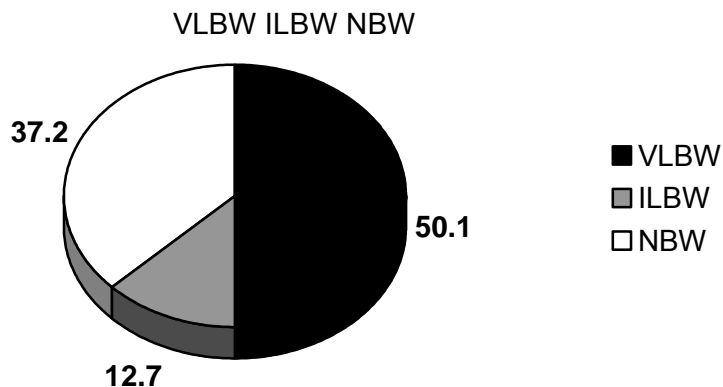
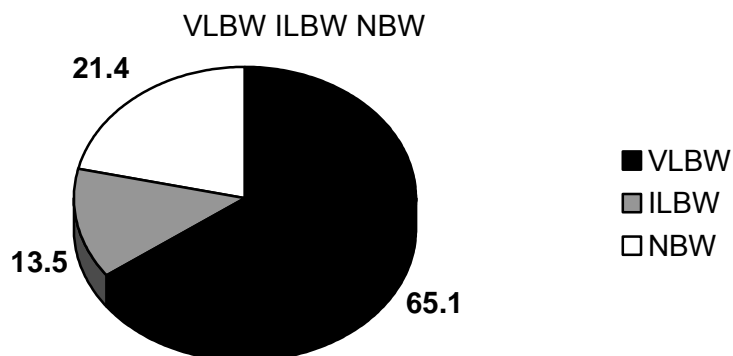
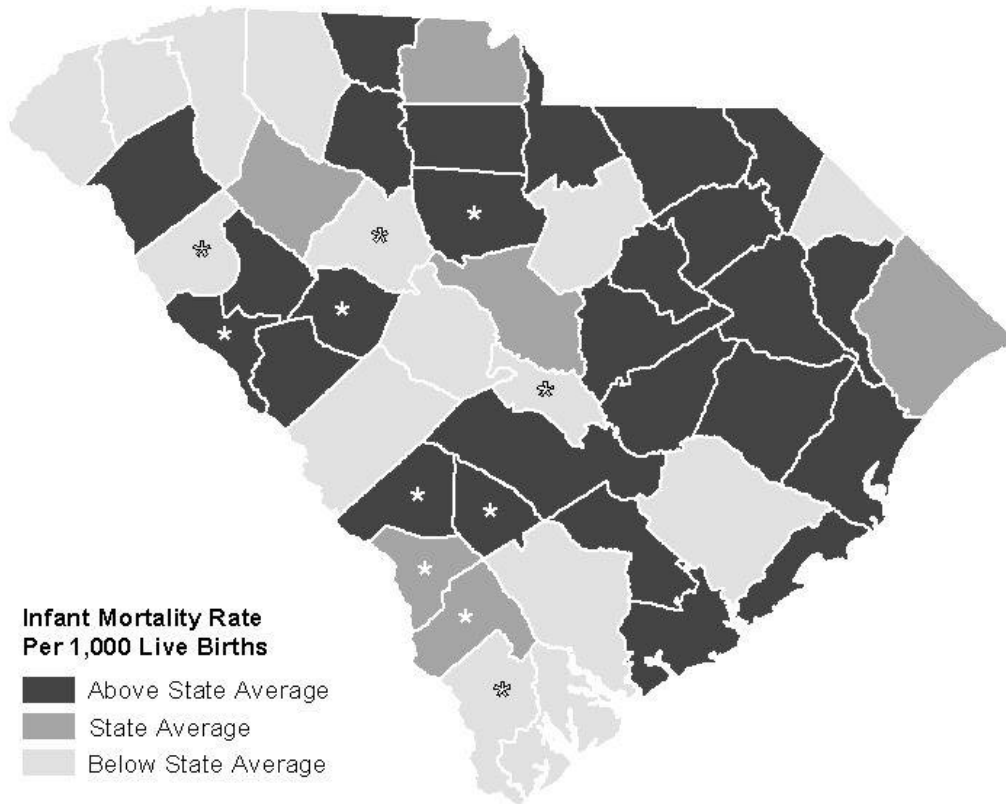


Figure 1-B.
 Percentage of Infant Deaths to Black and Other Mothers by Birthweight¹ Group
 South Carolina, 1998-2000 Residence Data



¹Does not include missing birthweights

Figure 2.
 Five-year Infant Mortality Rates by County
 South Carolina
 1996-2000
 (Residence Data)



NOTE: *'s indicates a rate calculated with 20 or fewer deaths. This rate is unreliable and should be used cautiously.

Above State Average indicates a rate greater than 9.7.
State Average indicates a rate between 8.9 and 9.7, inclusive.
Below State Average indicates a rate lower than 8.9.