

**South Carolina**  
**Department of**  
**Probation, Parole**  
**& Pardon Services**

Annual Statistical Report  
Fiscal Year 2004



## Message from the Director

---

The Fiscal Year 2003-04 Annual Statistical Report is attached for your review and reference. This report provides a basic statistical representation of the work of more than 667 agents and employees of this Department. While there have been many challenges over the course of the year, I am pleased to report that more than sixty-six out of every hundred offenders successfully completed supervision. The Bureau of Justice Statistics of the U.S. Department of Justice (2001) reported nationally that approximately 62% of 3.9 million offenders had successfully met the conditions of their supervision.

The South Carolina Department of Probation, Parole and Pardon Services operates its offender programs within a clear framework of public safety in supervising the 48,546 offenders who were under the legal jurisdiction of the Department in FY04. The Department promotes public safety and offender compliance through ensuring that our interventions promote the offender's ability to make positive changes in his or her life. In addition, our interventions are responses focused to address present or potential problems that may interfere with the successful completion of supervision.

The following tables provide a description of the offender population and answer some of the more commonly asked questions regarding the Department's programmatic efforts. Each table is preceded by a short description of its contents.

For the reader who wishes additional information or clarification, please do not hesitate to contact Tony Dukes, Research Director of the Office of Program Development and Grants Management at 734-3503.

Sincerely,

A handwritten signature in black ink, appearing to read "Samuel B. Glover".

Samuel B. Glover  
Director



## To the Reader

---

The reader should be aware, that there are different ways of reporting units of data depending upon the purpose. Admissions include only those offenders admitted to SCDPPPS who had no other active cases at the time of admission. Closures information reflects only the last order to close during the fiscal year. Actives represents only those offenders who were active on June 30, 2004.

At the end of FY 2003-04, there were 48,546 offenders who were under the legal jurisdiction of the Department. Legal jurisdiction includes offenders who have been transferred out of state, absconded with active warrants, and others who are not under the active day-to-day supervision of the Department. At the end of the fiscal year 33,105 offenders were under active supervision of the Department.

In addition, due to rounding, some of the totals will not equal 100%. Where possible, missing data or rounding has been indicated.



# TABLE OF CONTENTS

---

## SECTION A---TOTAL POPULATION

TABLE 1-A	Total Admissions by Status .....	3
TABLE 2-A	Total Admissions by Type of Offense .....	4
TABLE 3-A	Total Admissions by Gender & Race .....	5
FIGURE 1	Total Admissions by Gender & Race .....	6
TABLE 4-A	Active Offenders by Level of Supervision .....	7
FIGURE 2	Active Offenders by Level of Supervision .....	8
TABLE 5-A	Total Closures by Type .....	9
TABLE 6-A	Rate per Thousand High Risk Male Population .....	10
TABLE 7-A	Rate per Thousand High Risk Female Population .....	11
TABLE 8-A	Offender Drug Testing .....	12
TABLE 9-A	Total Admissions by Age .....	13

## SECTION B---PROBATION

TABLE 1-B	Probation Admissions by Type of Offense .....	15
TABLE 2-B	Probation Admissions by Gender & Race .....	16
TABLE 3-B	Active Probation Offenders by Level of Supervision .....	17
FIGURE 3	Active Probation Offenders by Level of Supervision .....	18
TABLE 4-B	Probation Closures by Type .....	19
TABLE 5-B	Probation Admissions by Age .....	20

## SECTION C---PAROLE

TABLE 1-C	Parole Admissions by Type of Offense .....	22
TABLE 2-C	Parole Admissions by Gender & Race .....	23
TABLE 3-C	Active Parole Offenders by Level of Supervision .....	24
FIGURE 4	Active Parole Offenders by Level of Supervision .....	25
TABLE 4-C	Parole Closures by Type .....	26
TABLE 5-C	Parole Admissions by Age .....	27

## SECTION D---YOA

TABLE 1-D	YOA Admissions by Type of Offense .....	29
TABLE 2-D	YOA Admissions by Gender & Race .....	30
TABLE 3-D	Active YOA Offenders by Level of Supervision .....	31
FIGURE 5	Active YOA Offenders by Level of Supervision .....	32

TABLE 4-D	YOA Closures by Type .....	33
TABLE 5-D	YOA Admissions by Age .....	34

**SECTION E---VIOLATIONS**

TABLE 1-E	Violations by County .....	36
TABLE 2-E	Closings by Type .....	37

**SUMMARY**

CHART 1	Population Characteristics .....	39
CHART 2	Admissions to SCDPPPS .....	40
CHART 3	Violent Admission by Program .....	41

*Section A*  
*Total Population*



## Total Population

---

Tables 1-A through 9-A and Figures 1-2, represent admissions to the Department of Probation, Parole and Pardon Services (SCDPPPS) over FY 03-04. These tables count admissions to a particular sanction, and include only those offenders admitted to SCDPPPS who had no other active cases at the time of admission. These tables also included only the main case even though an offender may have been admitted with more than one case. In FY 03-04, there were a total of 16,058 admissions. A state and county total is provided for each category of admission. Within the racial categories, due to the small number of offenders classified as "Hispanic, Native American, or Other", they have been grouped together and classified as "Other".

Table 1-A provides information on total admissions by program status. The counties of Charleston, Greenville, Richland and Spartanburg contributed the largest number of total admissions, together accounting for 33% of all admissions.

Table 2-A presents information on total admissions by type of offense, violent versus non-violent. Violent refers to those offenses as defined by the Omnibus Crime Act.<sup>1</sup> Total admissions during FY03-04 were predominately non-violent with very few admissions (4%) for violent offenses.

Table 3-A and Figure 1 illustrates total admissions by gender and race. Admissions overall continue to be predominately male, 83%, with a racial composition of 57% black, 41% white, and 2% other.

Table 4-A and Figure 2 describe all active offenders by level of supervision on June 30, 2004. This total does not include new and unclassified offenders, or indirect supervision offenders, such as those incarcerated on split sentences. The level of supervision determines how often the offender is seen by the Agent. Among all offenders, high level supervision represented 27%, administrative supervision represented 68%, followed by intensive supervision at 4%.

<sup>1</sup>Murder, Armed Robbery, Attempted Armed Robbery, Kidnapping, Carjacking, Criminal Sexual Conduct 1st and 2nd degree, Criminal Sexual Conduct with a Minor, Assault with Intent to Commit Criminal Sexual Conduct 1<sup>st</sup> or 2<sup>nd</sup> degree, Engaging a Child for Sexual Performance, Assault and Battery with Intent to Kill, Voluntary Manslaughter, Drug Trafficking (44-53-370 e), Arson 1<sup>st</sup> and 2<sup>nd</sup> degree, Burglary 1<sup>st</sup> degree, Burglary 2<sup>nd</sup> degree with Aggravating Circumstances, or Accessory Before the Fact to any of the above crimes.

Changes were made in the offender classification system during the past year that impacted the percentages for FY 04.

Table 5-A shows total closures by type (successful or unsuccessful). Closures include only those offenders in which all cases have completely closed out from SCDPPPS. Only the last order to close during FY 03-04 and within that order only the main case, even though an offender may have had more than one case, is included. The overall success rate for all offenders closing during FY03-04 was 66%. The unsuccessful rate, 34%, is defined as those offenders whose supervision was revoked due to a technical violation or new offense and those instances when the offender was sentenced to prison on a new offense.

Table 6-A presents the relationship between the number of high risk males (ages 17-34) in a county and the number of those males admitted to community supervision. This table illustrates that statewide, for every one thousand males age 17 to 34, 17.0 were admitted to the supervision of the Department of Probation, Parole and Pardon Services. County rates range from a low of 7.8 to a high of 31.0. This number is limited to new admissions for the fiscal year and does not reflect the percentage of active offenders in this age category.

Table 7-A demonstrates the relationship between the number of high risk females (ages 17-34) in a county and the number of those females admitted to community supervision. This table illustrates that statewide, for every one thousand females age 17 to 34, 3.0 were admitted to the supervision of the Department of Probation, Parole and Pardon Services. County rates range from a low of 0.8 to a high of 6.4. This number is limited to new admissions for the fiscal year and does not reflect the percentage of active offenders in this age category.

Table 8-A shows drug testing activity during FY 03-04. This table represents the number of individual offenders tested, the number of individuals testing positive, the number of times offenders were tested, and the total number of positive tests.

Table 9-A describes offender admissions by age category.



**S.C. DEPARTMENT OF  
PROBATION, PAROLE AND PARDON SERVICES  
TOTAL ADMISSIONS BY STATUS  
TABLE 1-A**

<b>COUNTY</b>	<b>PROB. ADM.</b>	<b>PERCENT PROB.</b>	<b>PAROLE ADM.</b>	<b>PERCENT PAROLE</b>	<b>YOA ADM.</b>	<b>PERCENT YOA</b>	<b>TOTAL ADM.</b>
ABBEVILLE	102	88%	9	8%	5	4%	116
AIKEN	392	87%	31	7%	30	7%	453
ALLENDALE	38	93%	1	2%	2	5%	41
ANDERSON	562	83%	71	10%	45	7%	678
BAMBERG	56	95%	1	2%	2	3%	59
BARNWELL	72	75%	7	7%	17	18%	96
BEAUFORT	217	81%	24	9%	27	10%	268
BERKELEY	379	83%	23	5%	57	12%	459
CALHOUN	44	88%	3	6%	3	6%	50
CHARLESTON	1,058	79%	85	6%	190	14%	1,333
CHEROKEE	267	88%	18	6%	17	6%	302
CHESTER	66	65%	17	17%	18	18%	101
CHESTERFIELD	139	82%	9	5%	21	12%	169
CLARENDON	87	74%	15	13%	16	14%	118
COLLETON	122	80%	11	7%	19	13%	152
DARLINGTON	221	80%	26	9%	28	10%	275
DILLON	106	76%	13	9%	21	15%	140
DORCHESTER	317	79%	32	8%	53	13%	402
EDGEFIELD	71	84%	10	12%	4	5%	85
FAIRFIELD	63	75%	11	13%	10	12%	84
FLORENCE	474	77%	89	14%	51	8%	614
GEORGETOWN	279	89%	23	7%	13	4%	315
GREENVILLE	1,369	85%	157	10%	89	6%	1,615
GREENWOOD	333	84%	27	7%	35	9%	395
HAMPTON	51	76%	6	9%	10	15%	67
HORRY	767	89%	65	8%	34	4%	866
JASPER	82	87%	9	10%	3	3%	94
KERSHAW	133	81%	11	7%	20	12%	164
LANCASTER	157	81%	15	8%	22	11%	194
LAURENS	250	81%	28	9%	29	9%	307
LEE	68	85%	10	13%	2	3%	80
LEXINGTON	330	84%	28	7%	34	9%	392
MCCORMICK	39	87%	4	9%	2	4%	45
MARION	111	68%	20	12%	33	20%	164
MARLBORO	161	83%	13	7%	19	10%	193
NEWBERRY	122	80%	13	9%	17	11%	152
OCONEE	195	83%	24	10%	16	7%	235
ORANGEBURG	310	75%	45	11%	60	14%	415
PICKENS	312	83%	37	10%	29	8%	378
RICHLAND	1,167	82%	127	9%	126	9%	1,420
SALUDA	62	83%	9	12%	4	5%	75
SPARTANBURG	829	84%	86	9%	72	7%	987
SUMTER	411	85%	44	9%	30	6%	485
UNION	131	86%	9	6%	12	8%	152
WILLIAMSBURG	118	74%	24	15%	18	11%	160
YORK	543	79%	64	9%	81	12%	688
TRANSITIONAL ADM.	19	76%	4	16%	2	8%	25
<b>STATE TOTAL</b>	<b>13,202</b>	<b>82%</b>	<b>1,408</b>	<b>9%</b>	<b>1,448</b>	<b>9%</b>	<b>16,058</b>

**S.C. DEPARTMENT OF  
PROBATION, PAROLE AND PARDON SERVICES  
TOTAL ADMISSIONS BY TYPE OF OFFENSE  
TABLE 2-A**

<b>COUNTY</b>	<b>OMNIBUS VIOLENT</b>	<b>PERCENT VIOLENT</b>	<b>NONVIOLENT</b>	<b>PERCENT NONVIOLENT</b>	<b>TOTAL ADM.</b>
ABBEVILLE	2	2%	114	98%	116
AIKEN	23	5%	430	95%	453
ALLENDALE	2	5%	39	95%	41
ANDERSON	41	6%	636	94%	677
BAMBERG	5	8%	54	92%	59
BARNWELL	2	2%	94	98%	96
BEAUFORT	11	4%	256	96%	267
BERKELEY	14	3%	445	97%	459
CALHOUN	3	6%	47	94%	50
CHARLESTON	47	4%	1,285	96%	1,332
CHEROKEE	11	4%	291	96%	302
CHESTER	5	5%	96	95%	101
CHESTERFIELD	5	3%	163	97%	168
CLARENDON	10	8%	108	92%	118
COLLETON	3	2%	149	98%	152
DARLINGTON	11	4%	264	96%	275
DILLON	5	4%	135	96%	140
DORCHESTER	23	6%	379	94%	402
EDGEFIELD	6	7%	79	93%	85
FAIRFIELD	3	4%	81	96%	84
FLORENCE	18	3%	596	97%	614
GEORGETOWN	10	3%	305	97%	315
GREENVILLE	60	4%	1,555	96%	1,615
GREENWOOD	13	3%	382	97%	395
HAMPTON	2	3%	65	97%	67
HORRY	26	3%	840	97%	866
JASPER	4	4%	90	96%	94
KERSHAW	6	4%	158	96%	164
LANCASTER	9	5%	185	95%	194
LAURENS	9	3%	298	97%	307
LEE	4	5%	76	95%	80
LEXINGTON	30	8%	362	92%	392
MCCORMICK	1	2%	43	98%	44
MARION	1	1%	163	99%	164
MARLBORO	7	4%	186	96%	193
NEWBERRY	12	8%	139	92%	151
OCONEE	16	7%	219	93%	235
ORANGEBURG	14	3%	401	97%	415
PICKENS	13	3%	365	97%	378
RICHLAND	59	4%	1,360	96%	1,419
SALUDA	1	1%	74	99%	75
SPARTANBURG	46	5%	941	95%	987
SUMTER	29	6%	456	94%	485
UNION	6	4%	146	96%	152
WILLIAMSBURG	11	7%	149	93%	160
YORK	26	4%	662	96%	688
TRANSITIONAL ADM.	0	0%	25	100%	25
<b>STATE TOTAL</b>	<b>665</b>	<b>4%</b>	<b>15,386</b>	<b>96%</b>	<b>16,051</b>

Offense not indicated in 7 cases

**S.C. DEPARTMENT OF  
PROBATION, PAROLE AND PARDON SERVICES  
TOTAL ADMISSIONS BY GENDER AND RACE  
TABLE 3-A  
N=16,058**

<b>COUNTY</b>	<b>PERCENT MALE</b>	<b>PERCENT FEMALE</b>	<b>PERCENT BLACK</b>	<b>PERCENT OTHER</b>	<b>PERCENT WHITE</b>
ABBEVILLE	80%	20%	60%	0%	40%
AIKEN	83%	17%	55%	0%	45%
ALLENDALE	93%	7%	93%	2%	5%
ANDERSON	81%	19%	34%	0%	66%
BAMBERG	86%	14%	88%	0%	12%
BARNWELL	93%	7%	81%	0%	19%
BEAUFORT	83%	17%	67%	3%	30%
BERKELEY	86%	14%	51%	1%	49%
CALHOUN	84%	16%	70%	2%	28%
CHARLESTON	89%	11%	72%	1%	27%
CHEROKEE	81%	19%	36%	2%	62%
CHESTER	90%	10%	68%	0%	32%
CHESTERFIELD	80%	20%	57%	0%	43%
CLARENDON	90%	10%	64%	0%	36%
COLLETON	87%	13%	62%	1%	38%
DARLINGTON	83%	17%	61%	0%	39%
DILLON	84%	16%	69%	5%	26%
DORCHESTER	87%	13%	51%	3%	45%
EDGEFIELD	85%	15%	66%	1%	33%
FAIRFIELD	87%	13%	81%	1%	18%
FLORENCE	84%	16%	70%	1%	29%
GEORGETOWN	86%	14%	69%	1%	29%
GREENVILLE	79%	21%	47%	3%	50%
GREENWOOD	83%	17%	65%	2%	33%
HAMPTON	90%	10%	84%	0%	16%
HORRY	82%	18%	38%	2%	59%
JASPER	88%	12%	69%	4%	27%
KERSHAW	84%	16%	45%	1%	54%
LANCASTER	77%	23%	46%	5%	48%
LAURENS	80%	20%	44%	2%	54%
LEE	90%	10%	79%	1%	20%
LEXINGTON	85%	15%	44%	1%	55%
MCCORMICK	86%	14%	77%	0%	23%
MARION	87%	13%	82%	1%	17%
MARLBORO	87%	13%	70%	2%	28%
NEWBERRY	85%	15%	68%	3%	29%
OCONEE	85%	15%	23%	3%	75%
ORANGEBURG	82%	18%	87%	1%	12%
PICKENS	80%	20%	18%	1%	81%
RICHLAND	81%	19%	82%	1%	17%
SALUDA	88%	12%	56%	0%	44%
SPARTANBURG	82%	18%	46%	2%	53%
SUMTER	85%	15%	73%	0%	27%
UNION	77%	23%	49%	0%	51%
WILLIAMSBURG	87%	13%	91%	0%	9%
YORK	83%	17%	39%	2%	59%
TRANSITIONAL ADM.	88%	12%	48%	0%	52%
<b>STATE TOTAL</b>	<b>83%</b>	<b>17%</b>	<b>57%</b>	<b>2%</b>	<b>41%</b>

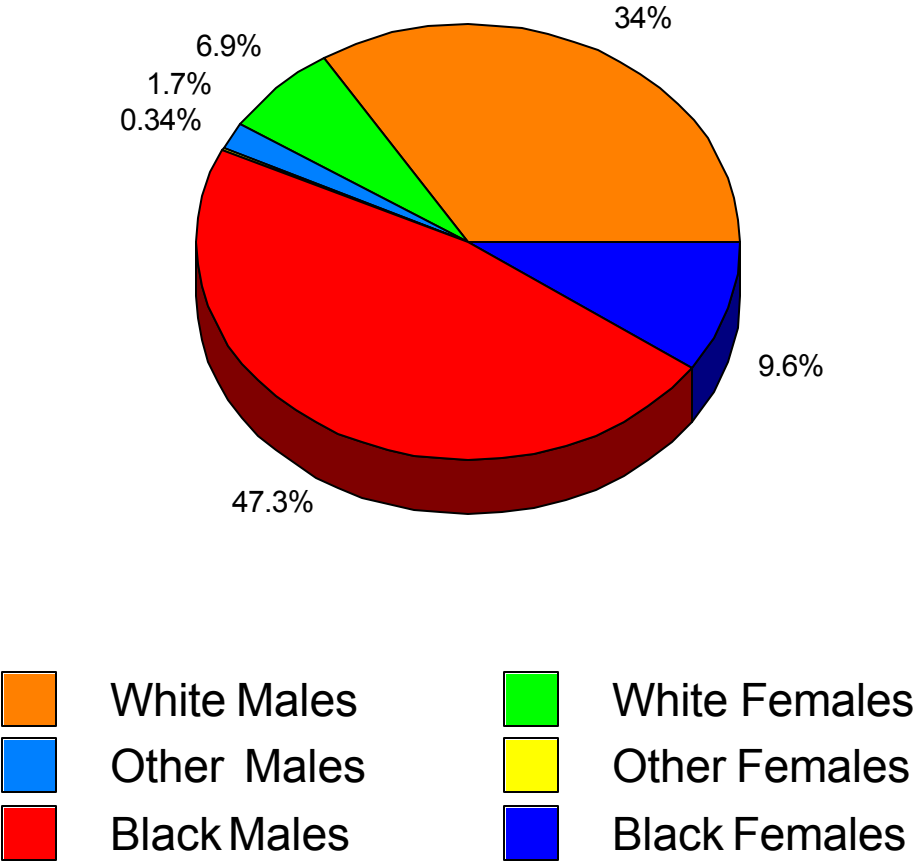
Percent may not equal 100 due to rounding.

Gender not indicated in 41 cases

Race not indicated in 40 cases

# TOTAL ADMISSIONS BY RACE AND GENDER

## FIGURE 1

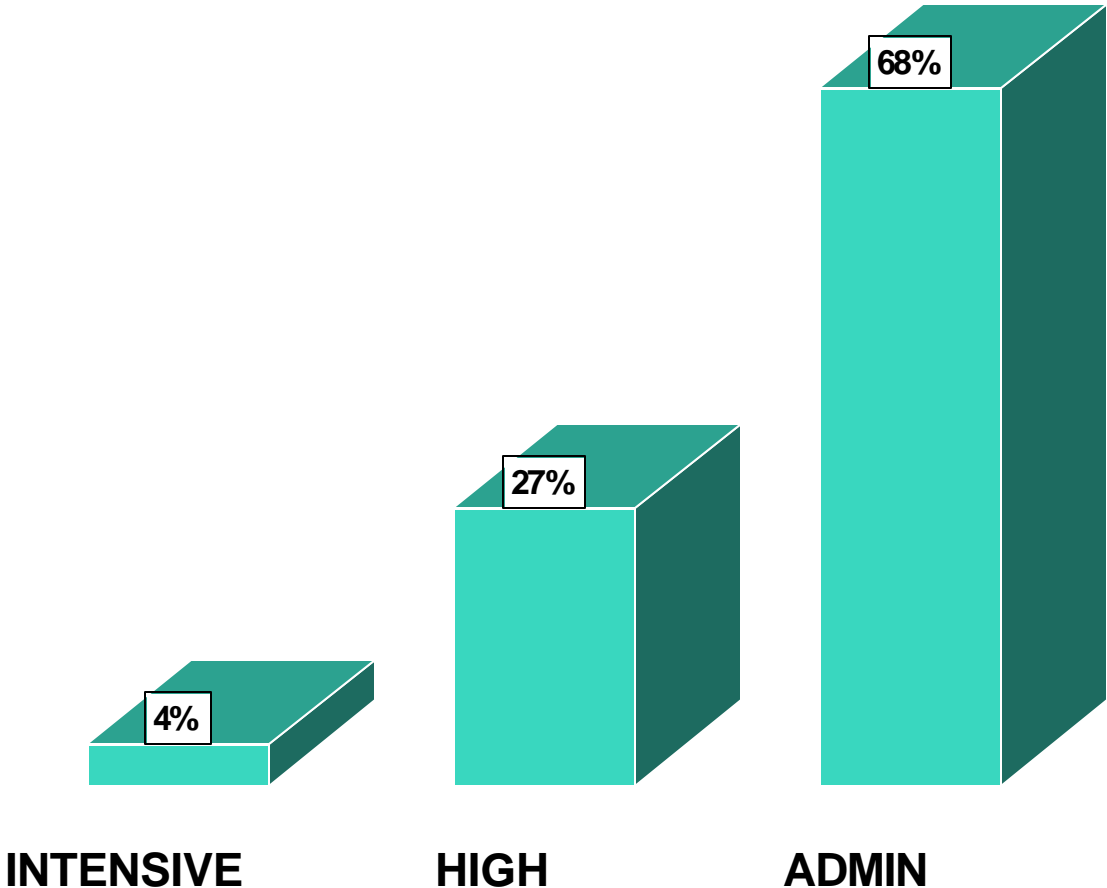


**S.C. DEPARTMENT OF  
PROBATION, PAROLE AND PARDON SERVICES  
ACTIVE OFFENDERS BY LEVEL OF  
SUPERVISION, JUNE 30, 2004  
TABLE 4-A**

<b>COUNTY</b>	<b>ADMIN</b>	<b>HIGH</b>	<b>INTENSIVE</b>	<b>TOTAL</b>
ABBEVILLE	67%	31%	2%	193
AIKEN	71%	26%	3%	1,119
ALLENDALE	81%	16%	3%	98
ANDERSON	69%	27%	4%	1,502
BAMBERG	69%	30%	1%	155
BARNWELL	51%	46%	3%	156
BEAUFORT	76%	23%	1%	515
BERKELEY	64%	32%	4%	758
CALHOUN	60%	32%	8%	105
CHARLESTON	58%	37%	5%	2,562
CHEROKEE	64%	32%	4%	595
CHESTER	59%	27%	14%	197
CHESTERFIELD	61%	34%	5%	238
CLARENDON	74%	23%	3%	224
COLLETON	73%	24%	3%	281
DARLINGTON	62%	32%	7%	429
DILLON	73%	22%	6%	252
DORCHESTER	70%	24%	5%	750
EDGEFIELD	62%	36%	2%	206
FAIRFIELD	58%	38%	4%	160
FLORENCE	72%	23%	5%	1,120
GEORGETOWN	77%	21%	3%	520
GREENVILLE	70%	27%	3%	3,352
GREENWOOD	61%	35%	3%	634
HAMPTON	78%	19%	3%	139
HORRY	73%	24%	2%	1,498
JASPER	75%	24%	1%	213
KERSHAW	67%	29%	4%	374
LANCASTER	63%	33%	4%	436
LAURENS	70%	27%	4%	731
LEE	46%	50%	4%	168
LEXINGTON	71%	27%	2%	1,411
MCCORMICK	54%	43%	3%	94
MARION	63%	25%	11%	251
MARLBORO	64%	25%	11%	256
NEWBERRY	71%	25%	4%	302
OCONEE	65%	33%	3%	482
ORANGEBURG	80%	15%	5%	865
PICKENS	69%	29%	2%	749
RICHLAND	76%	20%	4%	2,956
SALUDA	76%	22%	2%	190
SPARTANBURG	66%	29%	5%	2,292
SUMTER	66%	31%	3%	981
UNION	70%	25%	5%	359
WILLIAMSBURG	64%	34%	2%	290
YORK	68%	28%	4%	1,368
RESTITUTION CENTERS	0%	0%	100%	136
<b>STATE TOTAL</b>	<b>68%</b>	<b>27%</b>	<b>4%</b>	
* 443 Offenders Pending out of state transfer				
<b>ACTIVE OFFENDERS</b>	<b>22,319</b>	<b>8,973</b>	<b>1,370</b>	<b>32,662</b>

# ACTIVE OFFENDERS BY LEVEL OF SUPERVISION

## FIGURE 2



**S.C. DEPARTMENT OF  
PROBATION, PAROLE AND PARDON SERVICES  
TOTAL CLOSURES BY TYPE  
TABLE 5-A**

<b>COUNTY</b>	<b>SUCCESSFUL</b>	<b>SUCCESSFUL RATE</b>	<b>UNSUCCESSFUL</b>	<b>UNSUCCESSFUL RATE</b>
ABBEVILLE	89	63%	53	37%
AIKEN	412	70%	179	30%
ALLENDALE	34	59%	24	41%
ANDERSON	478	64%	274	36%
BAMBERG	78	80%	19	20%
BARNWELL	70	69%	32	31%
BEAUFORT	218	68%	103	32%
BERKELEY	426	71%	178	29%
CALHOUN	60	70%	26	30%
CHARLESTON	1,127	67%	556	33%
CHEROKEE	198	69%	87	31%
CHESTER	108	67%	54	33%
CHESTERFIELD	77	57%	59	43%
CLARENDON	108	66%	56	34%
COLLETON	135	69%	60	31%
DARLINGTON	193	55%	156	45%
DILLON	99	63%	58	37%
DORCHESTER	182	59%	125	41%
EDGEFIELD	77	66%	40	34%
FAIRFIELD	74	65%	39	35%
FLORENCE	557	63%	330	37%
GEORGETOWN	210	73%	78	27%
GREENVILLE	982	62%	611	38%
GREENWOOD	235	55%	194	45%
HAMPTON	55	71%	23	29%
HORRY	638	67%	317	33%
JASPER	91	83%	19	17%
KERSHAW	126	61%	80	39%
LANCASTER	210	68%	98	32%
LAURENS	239	65%	127	35%
LEE	101	77%	30	23%
LEXINGTON	581	75%	191	25%
MCCORMICK	41	79%	11	21%
MARION	130	65%	71	35%
MARLBORO	98	51%	95	49%
NEWBERRY	148	73%	54	27%
OCONEE	204	80%	52	20%
ORANGEBURG	404	70%	170	30%
PICKENS	228	67%	111	33%
RICHLAND	1,008	59%	704	41%
SALUDA	73	73%	27	27%
SPARTANBURG	733	67%	366	33%
SUMTER	426	68%	204	32%
UNION	113	63%	65	37%
WILLIAMSBURG	133	73%	48	27%
YORK	534	63%	318	37%
TRANSITIONAL ADM.	87	100%	0	0%
<b>STATE TOTAL</b>	<b>12,628</b>	<b>66%</b>	<b>6,572</b>	<b>34%</b>

**S.C. DEPARTMENT OF  
PROBATION, PAROLE AND PARDON SERVICES  
RATE PER 1,000 HIGH RISK  
MALE (ADMISSIONS) POPULATION  
TABLE 6-A**

<b>COUNTY</b>	<b>MALE POPULATION AGE 17-34*</b>	<b>SCDPPPS MALES AGE 17-34</b>	<b>RATE PER 1,000 AGE 17-34 OFFENDERS</b>	<b>RANK ORDER RATE PER 1,000 OFFENDERS</b>
ABBEVILLE	2,915	58	19.9	15
AIKEN	15,928	244	15.3	38
ALLENDALE	1,603	25	15.6	36
ANDERSON	18,993	330	17.4	27
BAMBERG	2,087	33	15.8	33
BARNWELL	2,602	65	25.0	6
BEAUFORT	18,413	157	8.5	45
BERKELEY	21,888	285	13.0	41
CALHOUN	1,488	22	14.8	40
CHARLESTON	43,941	799	18.2	24
CHEROKEE	6,483	146	22.5	11
CHESTER	3,832	65	17.0	29
CHESTERFIELD	5,029	98	19.5	16
CLARENDON	4,189	77	18.4	21
COLLETON	4,050	90	22.2	12
DARLINGTON	7,570	153	20.2	14
DILLON	3,488	92	26.4	4
DORCHESTER	11,113	239	21.5	13
EDGEFIELD	3,843	42	10.9	44
FAIRFIELD	2,565	49	19.1	18
FLORENCE	14,939	361	24.2	8
GEORGETOWN	5,644	175	31.0	1
GREENVILLE	49,263	758	15.4	37
GREENWOOD	8,089	218	27.0	3
HAMPTON	2,901	47	16.2	31
HORRY	24,916	464	18.6	19
JASPER	3,179	53	16.7	30
KERSHAW	5,560	101	18.2	25
LANCASTER	7,921	99	12.5	42
LAURENS	8,449	155	18.3	22
LEE	2,758	49	17.8	26
LEXINGTON	25,618	200	7.8	46
MCCORMICK	1,404	22	15.7	2
MARION	4,035	103	25.5	35
MARLBORO	3,769	115	30.5	5
NEWBERRY	4,378	81	18.5	20
OCONEE	7,401	117	15.8	34
ORANGEBURG	10,724	246	22.9	10
PICKENS	18,560	206	11.1	43
RICHLAND	49,109	793	16.1	32
SALUDA	2,385	41	17.2	28
SPARTANBURG	31,437	474	15.1	39
SUMTER	13,540	247	18.2	23
UNION	3,254	79	24.3	7
WILLIAMSBURG	3,986	94	23.6	9
YORK	19,844	384	19.4	17
<b>STATE TOTAL</b>	<b>515,083</b>	<b>8,751</b>	<b>17.0</b>	

\*DATA FURNISHED BY S.C. STATE DATA CENTER



**S.C. DEPARTMENT OF  
PROBATION, PAROLE AND PARDON SERVICES  
RATE PER 1,000 HIGH RISK  
FEMALE (ADMISSIONS) POPULATION  
TABLE 7-A**

<b>COUNTY</b>	<b>FEMALE POPULATION AGE 17-34*</b>	<b>SCDPPPS FEMALES AGE 17-34</b>	<b>RATE PER 1,000 AGE 17-34 OFFENDERS</b>	<b>RANK ORDER RATE PER 1,000 OFFENDERS</b>
ABBEVILLE	3,176	15	4.7	5
AIKEN	17,023	50	2.9	23
ALLENDALE	1,184	1	0.8	46
ANDERSON	19,519	69	3.5	12
BAMBERG	2,270	4	1.8	42
BARNWELL	2,747	4	1.5	43
BEAUFORT	13,976	25	1.8	40
BERKELEY	18,012	44	2.4	31
CALHOUN	1,666	5	3.0	20
CHARLESTON	43,604	85	1.9	37
CHEROKEE	6,665	35	5.3	2
CHESTER	4,079	4	1.0	45
CHESTERFIELD	5,096	18	3.5	13
CLARENDON	3,393	10	2.9	22
COLLETON	4,309	12	2.8	26
DARLINGTON	8,302	28	3.4	17
DILLON	3,802	15	3.9	8
DORCHESTER	11,378	29	2.5	28
EDGEFIELD	2,582	5	1.9	38
FAIRFIELD	2,749	6	2.2	35
FLORENCE	16,331	62	3.8	10
GEORGETOWN	5,966	26	4.4	7
GREENVILLE	49,074	188	3.8	9
GREENWOOD	8,937	39	4.4	6
HAMPTON	2,305	5	2.2	36
HORRY	23,882	90	3.8	11
JASPER	2,337	7	3.0	21
KERSHAW	5,815	15	2.6	27
LANCASTER	7,138	25	3.5	15
LAURENS	8,401	40	4.8	3
LEE	2,245	4	1.8	41
LEXINGTON	26,429	32	1.2	44
MCCORMICK	840	2	2.4	32
MARION	4,490	11	2.4	30
MARLBORO	3,375	16	4.7	4
NEWBERRY	4,353	8	1.8	39
OCONEE	7,204	21	2.9	24
ORANGEBURG	12,373	42	3.4	16
PICKENS	16,862	42	2.5	29
RICHLAND	49,742	162	3.3	19
SALUDA	2,174	5	2.3	33
SPARTANBURG	31,676	89	2.8	25
SUMTER	13,402	47	3.5	14
UNION	3,424	22	6.4	1
WILLIAMSBURG	4,368	10	2.3	34
YORK	21,679	73	3.4	18
<b>STATE TOTAL</b>	<b>510,354</b>	<b>1,547</b>	<b>3.0</b>	

\*DATA FURNISHED BY S.C. STATE DATA CENTER

**S.C. DEPARTMENT OF  
PROBATION, PAROLE AND PARDON SERVICES  
OFFENDER DRUG TESTING  
TABLE 8-A**

<b>COUNTY</b>	<b>INDIVIDUAL OFFENDERS TESTED</b>	<b>INDIVIDUALS TESTING POSITIVE</b>	<b>PERCENTAGE OF INDIVIDUAL OFFENDERS TESTING POSITIVE</b>	<b>TOTAL NO. POSITIVE TESTS</b>	<b>NUMBER OF TIMES OFFENDERS WERE TESTED</b>
ABBEVILLE	16	5	31.25%	7	19
AIKEN	438	113	25.80%	160	584
ALLENDALE	62	21	33.87%	27	68
ANDERSON	502	228	45.42%	436	805
BAMBERG	50	12	24.00%	15	61
BARNWELL	110	31	28.18%	57	145
BEAUFORT*	137	46	33.58%	56	176
BERKELEY*	247	90	36.44%	137	308
CALHOUN	90	38	42.22%	69	187
CHARLESTON	890	468	52.58%	888	1,347
CHEROKEE	96	28	29.17%	33	113
CHESTER	99	49	49.49%	73	120
CHESTERFIELD	106	48	45.28%	86	187
CLARENDON	227	74	32.60%	127	386
COLLETON	60	42	70.00%	85	105
DARLINGTON	423	148	34.99%	202	647
DILLON	40	24	60.00%	49	60
DORCHESTER*	323	112	34.67%	154	512
EDGEFIELD	83	11	13.25%	16	127
FAIRFIELD	114	40	35.09%	45	140
FLORENCE*	483	219	45.34%	367	691
GEORGETOWN	182	54	29.67%	71	238
GREENVILLE*	1,938	716	36.95%	1,327	3,584
GREENWOOD	345	154	44.64%	257	480
HAMPTON	36	6	16.67%	7	43
HORRY	1,050	316	30.10%	546	1,755
JASPER	38	11	28.95%	15	49
KERSHAW	192	90	46.88%	177	315
LANCASTER	218	97	44.50%	148	298
LAURENS	329	186	56.53%	366	564
LEE	29	12	41.38%	19	32
LEXINGTON	611	232	37.97%	359	767
MCCORMICK	19	6	31.58%	11	24
MARION	74	39	52.70%	60	114
MARLBORO	75	34	45.33%	57	101
NEWBERRY	135	46	34.07%	82	194
OCONEE	102	53	51.96%	90	111
ORANGEBURG	711	199	27.99%	295	902
PICKENS	98	22	22.45%	37	106
RICHLAND	1,752	638	36.42%	911	2,446
SALUDA	40	19	47.50%	24	45
SPARTANBURG	805	260	32.30%	455	1,129
SUMTER	187	84	44.92%	103	218
UNION	74	31	41.89%	50	94
WILLIAMSBURG	71	37	52.11%	63	107
YORK*	1,039	398	38.31%	603	1,590
SPARTANBURG REST. CTR.	202	55	27.23%	68	278
CHARLESTON REST. CTR	347	186	53.60%	332	585
<b>STATE TOTAL</b>	<b>15,295</b>	<b>5,828</b>	<b>38.10%</b>	<b>9,622</b>	<b>22,957</b>

\* Includes Satellite Office

**S.C. DEPARTMENT OF  
PROBATION, PAROLE AND PARDON SERVICES  
TOTAL ADMISSIONS BY AGE\*  
TABLE 9-A**

<b>COUNTY</b>	<b>Age 24 &amp; Under</b>	<b>Percent 24 &amp; Under</b>	<b>Age 25 &amp; Over</b>	<b>Percent 25 &amp; Over</b>
ABBEVILLE	37	32%	79	68%
AIKEN	139	31%	314	69%
ALLENDALE	12	29%	29	71%
ANDERSON	194	29%	480	71%
BAMBERG	22	37%	36	61%
BARNWELL	43	45%	53	55%
BEAUFORT	100	37%	164	61%
BERKELEY	188	41%	269	59%
CALHOUN	15	30%	35	70%
CHARLESTON	506	38%	825	62%
CHEROKEE	93	31%	206	68%
CHESTER	34	34%	66	65%
CHESTERFIELD	62	37%	106	63%
CLARENDON	45	38%	73	62%
COLLETON	57	38%	95	63%
DARLINGTON	81	29%	194	71%
DILLON	59	42%	81	58%
DORCHESTER	156	39%	245	61%
EDGEFIELD	28	33%	57	67%
FAIRFIELD	24	29%	60	71%
FLORENCE	221	36%	392	64%
GEORGETOWN	108	34%	206	65%
GREENVILLE	431	27%	1,184	73%
GREENWOOD	147	37%	247	63%
HAMPTON	29	43%	38	57%
HORRY	283	33%	582	67%
JASPER	33	35%	61	65%
KERSHAW	65	40%	99	60%
LANCASTER	68	35%	126	65%
LAURENS	94	31%	211	69%
LEE	25	31%	55	69%
LEXINGTON	113	29%	277	71%
MCCORMICK	13	29%	31	69%
MARION	63	38%	100	61%
MARLBORO	74	38%	117	61%
NEWBERRY	42	28%	109	72%
OCONEE	67	29%	167	71%
ORANGEBURG	175	42%	239	58%
PICKENS	132	35%	245	65%
RICHLAND	509	36%	909	64%
SALUDA	26	35%	49	65%
SPARTANBURG	244	25%	741	75%
SUMTER	176	36%	307	63%
UNION	52	34%	100	66%
WILLIAMSBURG	60	38%	99	62%
YORK	264	38%	423	61%
TRANSITIONAL ADM.	7	28%	18	72%
<b>STATE TOTAL</b>	<b>5,416</b>	<b>34%</b>	<b>10,599</b>	<b>66%</b>

\*43 offenders missing DOB.

*Section B*  
*Probation*



## Probation

---

PROBATION: The Department is charged with the responsibility of supervising those offenders placed on probation by the Court. Probation is a court-ordered community sanction which suspends the imposition of all or part of the original sentence of incarceration. It requires the offender, under SCDPPPS supervision in the community, to adhere to a set of conditions which limit the offender's freedom, reparation to victims if so ordered, and to provide for judicial revocation for violation of those conditions.

Tables 1-B and 2-B represent all probation admissions during FY03-04. Probation includes regular probation, intensive probation and offenders admitted to probation supervision from a split sentence from prison.

Table 1-B breaks down probation admissions in terms of offense type, violent versus non-violent. For FY 03-04 statewide 2% of all probation admissions were for violent offenses.

Table 2-B provides information on probation admissions by gender and race. Probation admissions were predominately male, 81%, with a racial composition of 54% black, 2% other, and 44% white.

Table 3-B and Figure 3 describe the active probation offender population in terms of level of supervision on June 30, 2004. This table does not include new and unclassified offenders or indirect supervision offenders, such as those incarcerated on split sentences. Among probationers, high level supervision represented 28%, administrative supervision represented 70%, followed by intensive supervision at 2%. Changes were made in the offender classification system in FY 04.

Table 4-B provides data for probation closures by type (successful or unsuccessful). The overall success rate for probationers (67%) was slightly above the success rate for the total offender population (66%).

Table 5-B reflects probation admissions by age category.

**S.C DEPARTMENT OF  
PROBATION, PAROLE AND PARDON SERVICES  
PROBATION ADMISSIONS BY TYPE OF OFFENSE  
TABLE 1-B**

COUNTY	OMNIBUS VIOLENT	PERCENT VIOLENT	NONVIOLENT	PERCENT NONVIOLENT	TOTAL
ABBEVILLE	2	2%	96	98%	98
AIKEN	13	3%	370	97%	383
ALLENDALE	1	3%	36	97%	37
ANDERSON	15	3%	526	97%	541
BAMBERG	3	5%	52	95%	55
BARNWELL	2	3%	70	97%	72
BEAUFORT	4	2%	209	98%	213
BERKELEY	7	2%	368	98%	375
CALHOUN	1	2%	43	98%	44
CHARLESTON	14	1%	1,005	99%	1,019
CHEROKEE	3	1%	258	99%	261
CHESTER	2	3%	63	97%	65
CHESTERFIELD	3	2%	131	98%	134
CLARENDON	4	5%	80	95%	84
COLLETON	1	1%	116	99%	117
DARLINGTON	4	2%	209	98%	213
DILLON	1	1%	103	99%	104
DORCHESTER	9	3%	303	97%	312
EDGEFIELD	4	6%	62	94%	66
FAIRFIELD	2	3%	61	97%	63
FLORENCE	3	1%	458	99%	461
GEORGETOWN	6	2%	270	98%	276
GREENVILLE	22	2%	1,325	98%	1,347
GREENWOOD	6	2%	316	98%	322
HAMPTON	1	2%	48	98%	49
HORRY	11	1%	742	99%	753
JASPER	2	2%	79	98%	81
KERSHAW	1	1%	130	99%	131
LANCASTER	6	4%	148	96%	154
LAURENS	4	2%	241	98%	245
LEE	2	3%	59	97%	61
LEXINGTON	9	3%	297	97%	306
MCCORMICK	0	0%	36	100%	36
MARION	0	0%	108	100%	108
MARLBORO	0	0%	154	100%	154
NEWBERRY	4	3%	111	97%	115
OCONEE	4	2%	176	98%	180
ORANGEBURG	2	1%	303	99%	305
PICKENS	5	2%	299	98%	304
RICHLAND	19	2%	1,110	98%	1,129
SALUDA	0	0%	61	100%	61
SPARTANBURG	21	3%	788	97%	809
SUMTER	6	2%	391	98%	397
UNION	2	2%	126	98%	128
WILLIAMSBURG	5	5%	103	95%	108
YORK	12	2%	520	98%	532
TRANSITIONAL ADM.	0	0%	19	100%	19
<b>STATE TOTAL</b>	<b>248</b>	<b>2%</b>	<b>12,579</b>	<b>98%</b>	<b>12,827</b>

Offense not indicated in 6 cases

**S.C. DEPARTMENT OF  
PROBATION, PAROLE AND PARDON SERVICES  
PROBATION ADMISSIONS BY GENDER AND RACE**

**TABLE 2-B  
N= 12,833**

<b>COUNTY</b>	<b>PERCENT MALE</b>	<b>PERCENT FEMALE</b>	<b>PERCENT BLACK</b>	<b>PERCENT OTHER</b>	<b>PERCENT WHITE</b>
ABBEVILLE	79%	21%	54%	0%	46%
AIKEN	81%	19%	54%	1%	46%
ALLENDALE	92%	8%	95%	3%	3%
ANDERSON	79%	21%	30%	0%	70%
BAMBERG	85%	15%	87%	0%	13%
BARNWELL	90%	10%	76%	0%	24%
BEAUFORT	81%	19%	65%	3%	32%
BERKELEY	84%	16%	47%	1%	52%
CALHOUN	84%	16%	70%	2%	27%
CHARLESTON	86%	14%	67%	2%	31%
CHEROKEE	79%	21%	33%	2%	65%
CHESTER	84%	16%	63%	0%	38%
CHESTERFIELD	77%	23%	52%	0%	48%
CLARENDON	88%	12%	62%	0%	38%
COLLETON	85%	15%	61%	1%	38%
DARLINGTON	80%	20%	58%	0%	42%
DILLON	82%	18%	65%	4%	31%
DORCHESTER	84%	16%	48%	3%	49%
EDGEFIELD	83%	17%	59%	2%	39%
FAIRFIELD	83%	17%	81%	0%	19%
FLORENCE	81%	19%	66%	1%	32%
GEORGETOWN	85%	15%	67%	1%	31%
GREENVILLE	78%	22%	45%	3%	52%
GREENWOOD	80%	20%	61%	2%	36%
HAMPTON	86%	14%	80%	0%	20%
HORRY	80%	20%	36%	3%	61%
JASPER	88%	12%	65%	5%	30%
KERSHAW	80%	20%	44%	1%	55%
LANCASTER	75%	25%	44%	5%	52%
LAURENS	78%	22%	40%	2%	58%
LEE	90%	10%	79%	0%	21%
LEXINGTON	83%	17%	41%	1%	58%
MCCORMICK	83%	17%	72%	0%	28%
MARION	82%	18%	77%	1%	22%
MARLBORO	84%	16%	72%	1%	27%
NEWBERRY	83%	17%	63%	4%	32%
OCONEE	83%	17%	19%	3%	78%
ORANGEBURG	79%	21%	85%	1%	14%
PICKENS	77%	23%	16%	2%	83%
RICHLAND	80%	20%	82%	1%	17%
SALUDA	85%	15%	52%	0%	48%
SPARTANBURG	81%	19%	43%	1%	55%
SUMTER	84%	16%	71%	1%	28%
UNION	73%	27%	50%	0%	50%
WILLIAMSBURG	86%	14%	88%	0%	12%
YORK	80%	20%	35%	2%	62%
TRANSITIONAL ADM.	84%	16%	53%	0%	47%
<b>STATE TOTAL</b>	<b>81%</b>	<b>19%</b>	<b>54%</b>	<b>2%</b>	<b>44%</b>

Percent may not equal 100 due to rounding.

Gender not indicated in 31 cases

Race not indicated in 31 cases

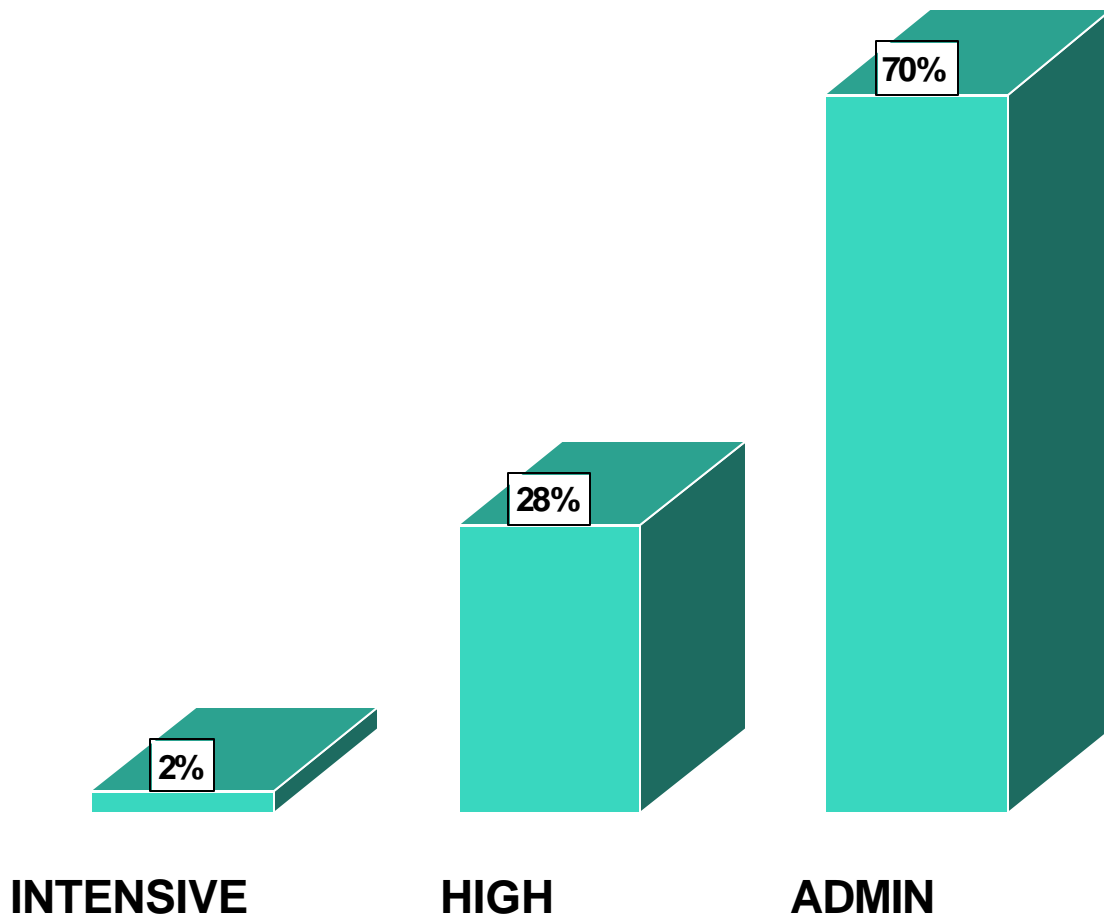
**S.C. DEPARTMENT OF  
PROBATION, PAROLE AND PARDON SERVICES  
ACTIVE PROBATION OFFENDERS BY LEVEL  
OF SUPERVISION, JUNE 30, 2004  
TABLE 3-B**

<b>COUNTY</b>	<b>ADMIN</b>	<b>HIGH</b>	<b>INTENSIVE</b>	<b>TOTAL</b>
ABBEVILLE	68%	31%	1%	158
AIKEN	72%	27%	1%	935
ALLENDALE	87%	13%	0%	79
ANDERSON	70%	28%	2%	1,242
BAMBERG	70%	30%	0%	138
BARNWELL	54%	46%	1%	123
BEAUFORT	76%	24%	0%	422
BERKELEY	66%	33%	0%	609
CALHOUN	63%	34%	3%	89
CHARLESTON	60%	39%	1%	2,056
CHEROKEE	65%	33%	2%	502
CHESTER	58%	33%	9%	144
CHESTERFIELD	63%	37%	1%	193
CLARENDON	77%	21%	3%	159
COLLETON	77%	23%	0%	223
DARLINGTON	66%	32%	2%	322
DILLON	75%	23%	2%	195
DORCHESTER	72%	27%	1%	596
EDGEFIELD	61%	38%	1%	176
FAIRFIELD	61%	39%	0%	127
FLORENCE	74%	23%	3%	867
GEORGETOWN	79%	21%	0%	442
GREENVILLE	72%	27%	1%	2,811
GREENWOOD	62%	36%	2%	516
HAMPTON	82%	18%	0%	111
HORRY	76%	24%	0%	1,288
JASPER	75%	25%	0%	166
KERSHAW	68%	31%	1%	313
LANCASTER	66%	33%	1%	369
LAURENS	70%	29%	2%	580
LEE	45%	54%	1%	131
LEXINGTON	70%	28%	1%	1,225
MCCORMICK	53%	44%	2%	81
MARION	67%	31%	2%	169
MARLBORO	66%	25%	9%	206
NEWBERRY	72%	27%	0%	224
OCONEE	66%	34%	1%	380
ORANGEBURG	83%	17%	0%	616
PICKENS	71%	29%	0%	625
RICHLAND	77%	21%	2%	2,375
SALUDA	82%	18%	0%	156
SPARTANBURG	69%	29%	2%	1,966
SUMTER	65%	34%	1%	812
UNION	73%	25%	2%	299
WILLIAMSBURG	62%	38%	1%	221
YORK	70%	29%	1%	1,101
RESTITUTION CENTERS	0%	0%	100%	123
<b>STATE TOTAL</b>	<b>70%</b>	<b>28%</b>	<b>2%</b>	
* 388 Offenders Pending out of state transfer				
<b>ACTIVE PROBATIONERS</b>	<b>18,637</b>	<b>7,564</b>	<b>460</b>	<b>26,661</b>



# ACTIVE PROBATION OFFENDERS BY LEVEL OF SUPERVISION

## FIGURE 3



**S.C. DEPARTMENT OF  
PROBATION, PAROLE AND PARDON SERVICES  
PROBATION CLOSURES BY TYPE  
TABLE 4-B**

<b>COUNTY</b>	<b>SUCCESSFUL</b>	<b>SUCCESSFUL RATE</b>	<b>UNSUCCESSFUL</b>	<b>UNSUCCESSFUL RATE</b>
ABBEVILLE	72	61%	47	39%
AIKEN	365	69%	163	31%
ALLENDALE	30	63%	18	38%
ANDERSON	404	64%	224	36%
BAMBERG	66	80%	17	20%
BARNWELL	60	68%	28	32%
BEAUFORT	185	69%	82	31%
BERKELEY	379	72%	150	28%
CALHOUN	57	72%	22	28%
CHARLESTON	981	71%	408	29%
CHEROKEE	180	70%	78	30%
CHESTER	94	69%	42	31%
CHESTERFIELD	58	55%	47	45%
CLARENDON	94	67%	46	33%
COLLETON	117	70%	49	30%
DARLINGTON	153	54%	132	46%
DILLON	78	64%	44	36%
DORCHESTER	149	62%	93	38%
EDGEFIELD	72	67%	36	33%
FAIRFIELD	57	64%	32	36%
FLORENCE	465	63%	268	37%
GEORGETOWN	193	76%	60	24%
GREENVILLE	818	61%	526	39%
GREENWOOD	194	57%	144	43%
HAMPTON	47	69%	21	31%
HORRY	580	68%	274	32%
JASPER	71	84%	14	16%
KERSHAW	107	63%	64	37%
LANCASTER	187	69%	84	31%
LAURENS	205	64%	113	36%
LEE	81	76%	26	24%
LEXINGTON	539	76%	172	24%
MCCORMICK	35	76%	11	24%
MARION	108	70%	47	30%
MARLBORO	73	48%	78	52%
NEWBERRY	119	73%	43	27%
OCONEE	173	82%	37	18%
ORANGEBURG	336	71%	139	29%
PICKENS	182	65%	96	35%
RICHLAND	875	58%	642	42%
SALUDA	60	78%	17	22%
SPARTANBURG	639	70%	278	30%
SUMTER	361	69%	161	31%
UNION	92	62%	57	38%
WILLIAMSBURG	105	71%	42	29%
YORK	460	65%	247	35%
TRANSITIONAL ADM.	69	100%	0	0%
<b>STATE TOTAL</b>	<b>10,825</b>	<b>67%</b>	<b>5,419</b>	<b>33%</b>

**S.C. DEPARTMENT OF  
PROBATION, PAROLE AND PARDON SERVICES  
PROBATION ADMISSIONS BY AGE\*  
TABLE 5-B**

<b>COUNTY</b>	<b>Age 24 &amp; Under</b>	<b>Percent 24 &amp; Under</b>	<b>Age 25 &amp; Over</b>	<b>Percent 25 &amp; Over</b>
ABBEVILLE	29	30%	69	70%
AIKEN	106	28%	277	72%
ALLENDALE	11	30%	26	70%
ANDERSON	140	26%	398	74%
BAMBERG	21	39%	33	61%
BARNWELL	26	36%	46	64%
BEAUFORT	74	35%	138	65%
BERKELEY	136	36%	238	64%
CALHOUN	13	30%	31	70%
CHARLESTON	328	32%	690	68%
CHEROKEE	77	30%	181	70%
CHESTER	16	25%	48	75%
CHESTERFIELD	41	31%	93	69%
CLARENDON	28	33%	56	67%
COLLETON	38	32%	79	68%
DARLINGTON	56	26%	157	74%
DILLON	36	35%	68	65%
DORCHESTER	111	36%	200	64%
EDGEFIELD	21	32%	45	68%
FAIRFIELD	16	25%	47	75%
FLORENCE	146	32%	314	68%
GEORGETOWN	89	32%	186	68%
GREENVILLE	332	25%	1,015	75%
GREENWOOD	106	33%	216	67%
HAMPTON	20	41%	29	59%
HORRY	240	32%	512	68%
JASPER	27	33%	54	67%
KERSHAW	43	33%	88	67%
LANCASTER	50	32%	104	68%
LAURENS	59	24%	184	76%
LEE	20	33%	41	67%
LEXINGTON	74	24%	232	76%
MCCORMICK	8	22%	28	78%
MARION	27	25%	80	75%
MARLBORO	57	37%	96	63%
NEWBERRY	24	21%	91	79%
OCONEE	48	27%	131	73%
ORANGEBURG	113	37%	192	63%
PICKENS	101	33%	202	67%
RICHLAND	366	32%	762	68%
SALUDA	21	34%	40	66%
SPARTANBURG	177	22%	631	78%
SUMTER	139	35%	257	65%
UNION	39	30%	89	70%
WILLIAMSBURG	34	31%	74	69%
YORK	177	33%	354	67%
TRANSITIONAL ADM.	6	32%	13	68%
<b>STATE TOTAL</b>	<b>3,867</b>	<b>30%</b>	<b>8,935</b>	<b>70%</b>

\*31 offenders missing DOB.

*Section C*  
*Parole*



## Parole

---

PAROLE: The Department is charged with the responsibility of supervising those offenders paroled by the SC Board of Pardons and Paroles. Parole is the conditional release of an individual from imprisonment, but not from the legal custody of the state, to complete his/her sentence outside a correctional institution under conditions and provisions of supervision determined by the Board. Should an individual be granted parole, he/she must agree to abide by certain conditions of community supervision. The violation of any of these conditions is sufficient grounds for revocation of parole by the Board, and the imposition of the remainder of the original sentence of incarceration.

Tables 1-C and 2-C pertain to data on all parole case admissions for FY 03-04. Parole includes regular parole, intensive parole and provisional parole. One hundred thirty eight (138) early release offenders were also included in parole for FY 03-04.

Table 1-C shows parole admissions by type of offense. A larger percent of parole admissions, 21%, fall into the violent category, as compared to 2% for probation admissions and 3% for YOA admissions.

Table 2-C describes all parole admissions by gender and race. Parole admissions consisted primarily of males, 88%, with a racial composition of 68% black, 1% other, and 31% white.

Table 3-C and Figure 4 describe active parolees by level of supervision on June 30, 2003. This figure does not include new and unclassified offenders. Among parolees, administrative supervision offenders represented 66% of the parolee population, followed by high level at 23%. Intensive supervision accounted for 12% of the parolee population.

Table 4-C presents parole case closures by type (successful or unsuccessful). The overall success rate for parolees (77%) was somewhat higher than that of probationers (67%).

Table 5-C describes the parole population by age category.

**S.C. DEPARTMENT OF  
PROBATION, PAROLE AND PARDON SERVICES  
PAROLE ADMISSIONS BY TYPE OF OFFENSE  
TABLE 1-C**

COUNTY	OMNIBUS VIOLENT	PERCENT VIOLENT	NONVIOLENT	PERCENT NONVIOLENT	TOTAL
ABBEVILLE	0	0%	13	100%	13
AIKEN	9	24%	29	76%	38
ALLENDALE	1	50%	1	50%	2
ANDERSON	26	29%	65	71%	91
BAMBERG	2	100%	0	0%	2
BARNWELL	0	0%	7	100%	7
BEAUFORT	7	26%	20	74%	27
BERKELEY	5	19%	22	81%	27
CALHOUN	2	67%	1	33%	3
CHARLESTON	30	25%	91	75%	121
CHEROKEE	7	29%	17	71%	24
CHESTER	3	17%	15	83%	18
CHESTERFIELD	2	15%	11	85%	13
CLARENDON	5	29%	12	71%	17
COLLETON	2	13%	14	88%	16
DARLINGTON	7	21%	26	79%	33
DILLON	2	13%	13	87%	15
DORCHESTER	8	22%	28	78%	36
EDGEFIELD	2	13%	13	87%	15
FAIRFIELD	1	9%	10	91%	11
FLORENCE	14	14%	87	86%	101
GEORGETOWN	4	15%	22	85%	26
GREENVILLE	38	21%	141	79%	179
GREENWOOD	6	16%	32	84%	38
HAMPTON	1	13%	7	88%	8
HORRY	14	18%	65	82%	79
JASPER	2	20%	8	80%	10
KERSHAW	4	31%	9	69%	13
LANCASTER	3	17%	15	83%	18
LAURENS	4	12%	29	88%	33
LEE	2	13%	14	88%	16
LEXINGTON	20	38%	32	62%	52
MCCORMICK	1	17%	5	83%	6
MARION	1	4%	22	96%	23
MARLBORO	7	35%	13	65%	20
NEWBERRY	8	42%	11	58%	19
OCONEE	11	28%	28	72%	39
ORANGEBURG	7	14%	43	86%	50
PICKENS	8	18%	36	82%	44
RICHLAND	31	19%	129	81%	160
SALUDA	1	10%	9	90%	10
SPARTANBURG	24	23%	81	77%	105
SUMTER	19	35%	36	65%	55
UNION	3	25%	9	75%	12
WILLIAMSBURG	6	18%	28	82%	34
YORK	14	19%	61	81%	75
TRANSITIONAL ADM.	0	0%	4	100%	4
<b>STATE TOTAL</b>	<b>374</b>	<b>21%</b>	<b>1,384</b>	<b>79%</b>	<b>1,758</b>

Offense not indicated in 1 case

**S.C. DEPARTMENT OF  
PROBATION, PAROLE AND PARDON SERVICES  
PAROLE ADMISSIONS BY GENDER AND RACE  
TABLE 2-C  
N=1,759**

COUNTY	PERCENT MALE	PERCENT FEMALE	PERCENT BLACK	PERCENT OTHER	PERCENT WHITE
ABBEVILLE	77%	23%	92%	0%	8%
AIKEN	92%	8%	63%	0%	37%
ALLENDALE	100%	0%	100%	0%	0%
ANDERSON	85%	15%	51%	0%	49%
BAMBERG	100%	0%	100%	0%	0%
BARNWELL	100%	0%	100%	0%	0%
BEAUFORT	93%	7%	81%	4%	15%
BERKELEY	85%	15%	56%	0%	44%
CALHOUN	67%	33%	67%	0%	33%
CHARLESTON	94%	6%	82%	1%	17%
CHEROKEE	96%	4%	50%	0%	50%
CHESTER	100%	0%	89%	0%	11%
CHESTERFIELD	77%	23%	85%	0%	15%
CLARENDON	88%	12%	71%	0%	29%
COLLETON	94%	6%	88%	0%	13%
DARLINGTON	94%	6%	76%	0%	24%
DILLON	87%	13%	87%	0%	13%
DORCHESTER	92%	8%	58%	6%	36%
EDGEFIELD	93%	7%	87%	0%	13%
FAIRFIELD	100%	0%	73%	9%	18%
FLORENCE	92%	8%	79%	0%	21%
GEORGETOWN	96%	4%	92%	0%	8%
GREENVILLE	75%	25%	56%	4%	40%
GREENWOOD	89%	11%	78%	0%	22%
HAMPTON	100%	0%	88%	0%	13%
HORRY	92%	8%	51%	0%	49%
JASPER	90%	10%	100%	0%	0%
KERSHAW	100%	0%	54%	0%	46%
LANCASTER	78%	22%	56%	11%	33%
LAURENS	85%	15%	61%	3%	36%
LEE	88%	13%	75%	6%	19%
LEXINGTON	92%	8%	58%	2%	40%
MCCORMICK	100%	0%	100%	0%	0%
MARION	87%	13%	96%	0%	4%
MARLBORO	95%	5%	70%	0%	30%
NEWBERRY	84%	16%	74%	0%	26%
OCONEE	90%	10%	44%	3%	54%
ORANGEBURG	94%	6%	98%	0%	2%
PICKENS	84%	16%	23%	0%	77%
RICHLAND	79%	21%	83%	1%	17%
SALUDA	100%	0%	80%	0%	20%
SPARTANBURG	84%	16%	56%	4%	40%
SUMTER	87%	13%	80%	0%	20%
UNION	92%	8%	50%	0%	50%
WILLIAMSBURG	88%	12%	94%	0%	6%
YORK	89%	11%	48%	0%	52%
TRANSITIONAL ADM.	100%	0%	25%	0%	75%
<b>STATE TOTAL</b>	88%	12%	68%	1%	31%

Gender not indicated in 3 cases

Race not indicated in 4 cases

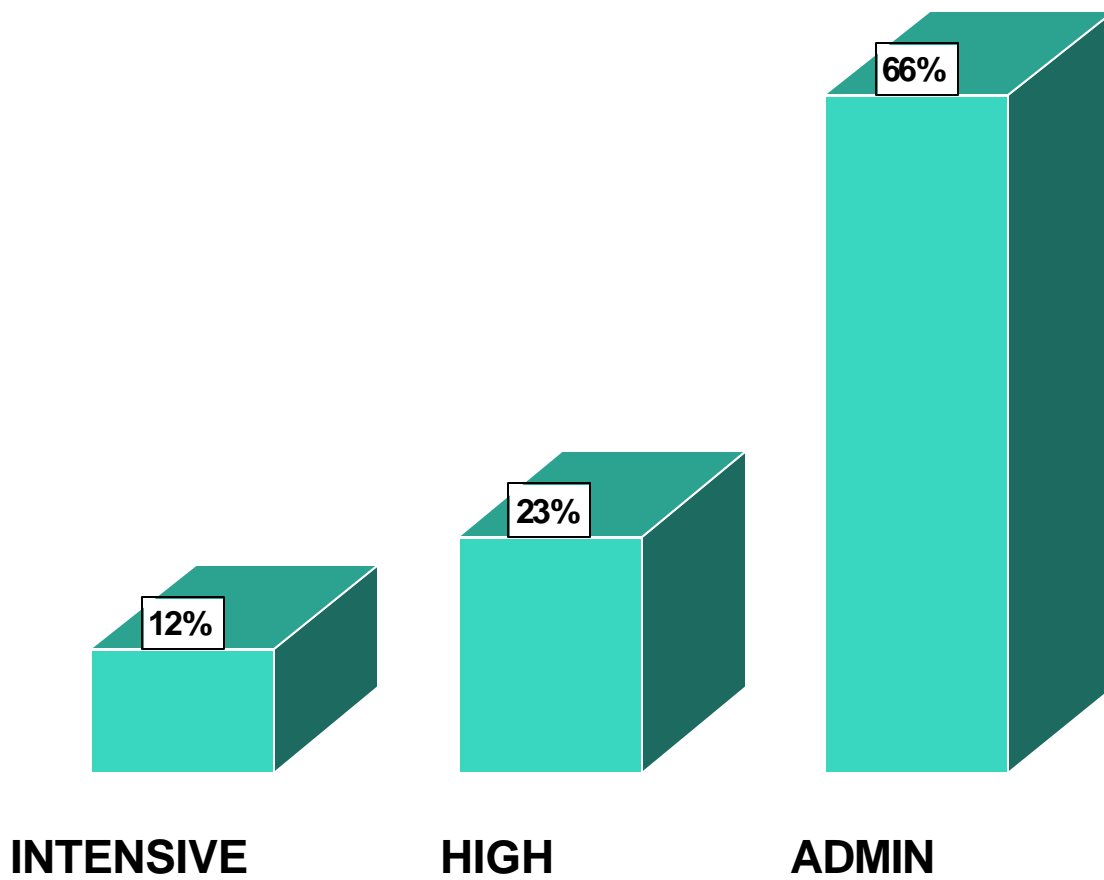
**S.C. DEPARTMENT OF  
PROBATION, PAROLE AND PARDON SERVICES  
ACTIVE PAROLE OFFENDERS BY LEVEL  
OF SUPERVISION, JUNE 30, 2004  
TABLE 3-C**

<b>COUNTY</b>	<b>ADMIN</b>	<b>HIGH</b>	<b>INTENSIVE</b>	<b>TOTAL</b>
ABBEVILLE	52%	37%	11%	27
AIKEN	68%	20%	12%	101
ALLENDALE	56%	22%	22%	9
ANDERSON	66%	21%	13%	197
BAMBERG	62%	31%	8%	13
BARNWELL	65%	35%	0%	17
BEAUFORT	72%	22%	6%	50
BERKELEY	66%	21%	13%	56
CALHOUN	63%	13%	25%	8
CHARLESTON	59%	28%	13%	232
CHEROKEE	57%	30%	13%	53
CHESTER	67%	15%	18%	33
CHESTERFIELD	76%	19%	5%	21
CLARENDON	67%	30%	2%	43
COLLETON	64%	21%	14%	28
DARLINGTON	51%	30%	19%	67
DILLON	63%	16%	22%	32
DORCHESTER	67%	20%	13%	60
EDGEFIELD	63%	37%	0%	19
FAIRFIELD	45%	36%	18%	22
FLORENCE	65%	22%	13%	157
GEORGETOWN	61%	20%	20%	56
GREENVILLE	68%	21%	10%	357
GREENWOOD	64%	31%	5%	64
HAMPTON	75%	25%	0%	16
HORRY	63%	26%	11%	148
JASPER	83%	14%	3%	29
KERSHAW	67%	17%	17%	36
LANCASTER	49%	30%	22%	37
LAURENS	68%	22%	11%	93
LEE	43%	40%	17%	30
LEXINGTON	75%	16%	9%	139
MCCORMICK	73%	27%	0%	11
MARION	71%	10%	20%	41
MARLBORO	59%	33%	7%	27
NEWBERRY	69%	21%	10%	48
OCONEE	71%	23%	6%	69
ORANGEBURG	74%	14%	12%	117
PICKENS	61%	32%	7%	82
RICHLAND	72%	17%	11%	348
SALUDA	42%	53%	5%	19
SPARTANBURG	62%	26%	11%	213
SUMTER	70%	18%	12%	114
UNION	57%	20%	23%	35
WILLIAMSBURG	73%	24%	4%	51
YORK	67%	22%	11%	150
RESTITUTION CENTERS	0%	0%	100%	5
<b>STATE TOTAL</b>	<b>66%</b>	<b>23%</b>	<b>12%</b>	
* 39 Offenders Pending out of state transfer				
<b>ACTIVE PAROLEES</b>	<b>2,357</b>	<b>808</b>	<b>415</b>	<b>3,580</b>



# ACTIVE PAROLE OFFENDERS BY LEVEL OF SUPERVISION

## FIGURE 4



**S.C. DEPARTMENT OF  
PROBATION, PAROLE AND PARDON SERVICES  
PAROLE CLOSURES BY TYPE  
TABLE 4-C**

COUNTY	SUCCESSFUL	SUCCESSFUL RATE	UNSUCCESSFUL	UNSUCCESSFUL RATE
ABBEVILLE	13	87%	2	13%
AIKEN	31	78%	9	23%
ALLENDALE	3	75%	1	25%
ANDERSON	58	73%	21	27%
BAMBERG	7	88%	1	13%
BARNWELL	5	100%	0	0%
BEAUFORT	21	75%	7	25%
BERKELEY	30	81%	7	19%
CALHOUN	2	67%	1	33%
CHARLESTON	83	75%	27	25%
CHEROKEE	12	92%	1	8%
CHESTER	13	72%	5	28%
CHESTERFIELD	12	80%	3	20%
CLARENDON	11	73%	4	27%
COLLETON	12	100%	0	0%
DARLINGTON	23	72%	9	28%
DILLON	14	88%	2	13%
DORCHESTER	20	77%	6	23%
EDGEFIELD	4	80%	1	20%
FAIRFIELD	8	80%	2	20%
FLORENCE	62	67%	31	33%
GEORGETOWN	12	63%	7	37%
GREENVILLE	136	78%	38	22%
GREENWOOD	27	68%	13	33%
HAMPTON	6	100%	0	0%
HORRY	47	66%	24	34%
JASPER	9	82%	2	18%
KERSHAW	11	85%	2	15%
LANCASTER	18	86%	3	14%
LAURENS	23	96%	1	4%
LEE	18	90%	2	10%
LEXINGTON	33	77%	10	23%
MCCORMICK	6	100%	0	0%
MARION	15	56%	12	44%
MARLBORO	20	91%	2	9%
NEWBERRY	15	94%	1	6%
OCONEE	22	92%	2	8%
ORANGEBURG	46	84%	9	16%
PICKENS	35	85%	6	15%
RICHLAND	111	79%	29	21%
SALUDA	12	86%	2	14%
SPARTANBURG	74	72%	29	28%
SUMTER	48	71%	20	29%
UNION	14	88%	2	13%
WILLIAMSBURG	18	90%	2	10%
YORK	58	73%	22	28%
TRANSITIONAL ADMIN.	16	100%	0	0%
<b>STATE TOTAL</b>	<b>1294</b>	<b>77%</b>	<b>380</b>	<b>23%</b>

**S.C. DEPARTMENT OF  
PROBATION, PAROLE AND PARDON SERVICES  
PAROLE ADMISSIONS BY AGE\*  
TABLE 5-C**

<b>COUNTY</b>	<b>Age 24 &amp; Under</b>	<b>Percent 24 &amp; Under</b>	<b>Age 25 &amp; Over</b>	<b>Percent 25 &amp; Over</b>
ABBEVILLE	4	31%	9	69%
AIKEN	5	13%	33	87%
ALLENDALE	0	0%	2	100%
ANDERSON	13	14%	78	86%
BAMBERG	0	0%	2	100%
BARNWELL	1	14%	6	86%
BEAUFORT	3	12%	23	88%
BERKELEY	4	15%	23	85%
CALHOUN	0	0%	3	100%
CHARLESTON	13	11%	108	89%
CHEROKEE	2	8%	22	92%
CHESTER	3	17%	15	83%
CHESTERFIELD	2	15%	11	85%
CLARENDON	3	18%	14	82%
COLLETON	3	19%	13	81%
DARLINGTON	2	6%	31	94%
DILLON	3	20%	12	80%
DORCHESTER	1	3%	35	97%
EDGEFIELD	3	20%	12	80%
FAIRFIELD	1	9%	10	91%
FLORENCE	28	28%	73	72%
GEORGETOWN	7	27%	19	73%
GREENVILLE	21	12%	158	88%
GREENWOOD	8	22%	29	78%
HAMPTON	2	25%	6	75%
HORRY	11	14%	68	86%
JASPER	3	30%	7	70%
KERSHAW	4	31%	9	69%
LANCASTER	2	11%	16	89%
LAURENS	8	24%	25	76%
LEE	2	13%	14	88%
LEXINGTON	10	20%	41	80%
MCCORMICK	3	50%	3	50%
MARION	6	26%	17	74%
MARLBORO	3	15%	17	85%
NEWBERRY	2	11%	17	89%
OCONEE	5	13%	34	87%
ORANGEBURG	8	16%	42	84%
PICKENS	7	16%	37	84%
RICHLAND	30	19%	130	81%
SALUDA	1	10%	9	90%
SPARTANBURG	10	10%	95	90%
SUMTER	12	22%	43	78%
UNION	3	25%	9	75%
WILLIAMSBURG	9	27%	24	73%
YORK	10	13%	65	87%
TRANSITIONAL ADM.	0	0%	4	100%
<b>STATE TOTAL</b>	<b>281</b>	<b>16%</b>	<b>1473</b>	<b>84%</b>

\*5 offenders missing DOB.

*Section D*  
*Youthful Offender*



## Youthful Offender Conditional Release

---

**YOUTHFUL OFFENDER CONDITIONAL RELEASE:** Inmates ages 17 through 24, sentenced under the state's Youthful Offender Act (YOA) to an indeterminate period of incarceration (not to exceed six years) within the S.C. Department of Corrections (SCDC), maybe conditionally released prior to that time, based on offense, category, adjustment and evaluation while incarcerated. While under SCDPPPS supervision, these offenders remain under the jurisdiction of SCDC.

Tables 1-D and 2-D presents data on all YOA case admissions for FY 03-04.

Table 1-D displays YOA admissions by type of offense. YOA violent admissions at 3% are the same as those admitted to probation at 2%.

Table 2-D illustrates YOA admissions by gender and race. YOA admissions were predominately male (96%) and black (71%).

Table 3-D and Figure 5 describe the active population for YOA conditional release in terms of level of supervision on June 30, 2004. Twenty six percent (26%) are supervised at a high level. Intensive level supervision accounted for 22%, while 52% are supervised at administrative level.

Table 4-D shows YOA offenders are more inclined to close unsuccessfully (61%) than parolees (23%).

Table 5-D describes YOA admissions by age category.

**S.C. DEPARTMENT OF  
PROBATION, PAROLE AND PARDON SERVICES  
YOA ADMISSIONS BY TYPE OF OFFENSE  
TABLE 1-D**

COUNTY	OMNIBUS VIOLENT	PERCENT VIOLENT	NONVIOLENT	PERCENT NONVIOLENT	TOTAL
ABBEVILLE	0	0%	5	100%	5
AIKEN	1	3%	29	97%	30
ALLENDALE	0	0%	2	100%	2
ANDERSON	0	0%	45	100%	45
BAMBERG	0	0%	2	100%	2
BARNWELL	0	0%	17	100%	17
BEAUFORT	0	0%	27	100%	27
BERKELEY	2	4%	55	96%	57
CALHOUN	0	0%	3	100%	3
CHARLESTON	2	1%	188	99%	190
CHEROKEE	1	6%	16	94%	17
CHESTER	0	0%	18	100%	18
CHESTERFIELD	0	0%	21	100%	21
CLARENDON	1	6%	15	94%	16
COLLETON	0	0%	19	100%	19
DARLINGTON	0	0%	28	100%	28
DILLON	2	10%	19	90%	21
DORCHESTER	5	9%	48	91%	53
EDGEFIELD	0	0%	4	100%	4
FAIRFIELD	0	0%	10	100%	10
FLORENCE	1	2%	50	98%	51
GEORGETOWN	0	0%	13	100%	13
GREENVILLE	0	0%	89	100%	89
GREENWOOD	1	3%	34	97%	35
HAMPTON	0	0%	10	100%	10
HORRY	1	3%	33	97%	34
JASPER	0	0%	3	100%	3
KERSHAW	1	5%	19	95%	20
LANCASTER	0	0%	22	100%	22
LAURENS	1	3%	28	97%	29
LEE	0	0%	2	100%	2
LEXINGTON	1	3%	33	97%	34
MCCORMICK	0	0%	2	100%	2
MARION	0	0%	33	100%	33
MARLBORO	0	0%	19	100%	19
NEWBERRY	0	0%	17	100%	17
OCONEE	1	6%	15	94%	16
ORANGEBURG	5	8%	55	92%	60
PICKENS	0	0%	29	100%	29
RICHLAND	7	6%	119	94%	126
SALUDA	0	0%	4	100%	4
SPARTANBURG	0	0%	72	100%	72
SUMTER	2	7%	28	93%	30
UNION	1	8%	11	92%	12
WILLIAMSBURG	0	0%	18	100%	18
YORK	0	0%	81	100%	81
TRANSITIONAL ADM.	2	100%	0	0%	2
<b>STATE TOTAL</b>	<b>38</b>	<b>3%</b>	<b>1,410</b>	<b>97%</b>	<b>1,448</b>

**S.C. DEPARTMENT OF  
PROBATION, PAROLE AND PARDON SERVICES  
YOA ADMISSIONS BY GENDER AND RACE  
TABLE 2-D  
N=1448**

<b>COUNTY</b>	<b>PERCENT MALE</b>	<b>PERCENT FEMALE</b>	<b>PERCENT BLACK</b>	<b>PERCENT OTHER</b>	<b>PERCENT WHITE</b>
ABBEVILLE	100%	0%	100%	0%	0%
AIKEN	100%	0%	53%	0%	47%
ALLENDALE	100%	0%	50%	0%	50%
ANDERSON	91%	9%	42%	0%	58%
BAMBERG	100%	0%	100%	0%	0%
BARNWELL	100%	0%	94%	0%	6%
BEAUFORT	96%	4%	67%	4%	30%
BERKELEY	98%	2%	71%	0%	29%
CALHOUN	100%	0%	67%	0%	33%
CHARLESTON	99%	1%	92%	0%	8%
CHEROKEE	88%	12%	65%	0%	35%
CHESTER	100%	0%	67%	0%	33%
CHESTERFIELD	100%	0%	67%	0%	33%
CLARENDON	100%	0%	69%	0%	31%
COLLETON	95%	5%	47%	0%	53%
DARLINGTON	96%	4%	64%	0%	36%
DILLON	95%	5%	76%	14%	10%
DORCHESTER	96%	4%	68%	4%	28%
EDGEFIELD	75%	25%	100%	0%	0%
FAIRFIELD	100%	0%	90%	0%	10%
FLORENCE	98%	2%	84%	0%	16%
GEORGETOWN	100%	0%	69%	0%	31%
GREENVILLE	96%	4%	62%	0%	38%
GREENWOOD	97%	3%	83%	0%	17%
HAMPTON	100%	0%	100%	0%	0%
HORRY	94%	6%	55%	0%	45%
JASPER	100%	0%	67%	0%	33%
KERSHAW	100%	0%	45%	5%	50%
LANCASTER	91%	9%	59%	5%	36%
LAURENS	93%	7%	59%	0%	41%
LEE	100%	0%	100%	0%	0%
LEXINGTON	91%	9%	45%	0%	55%
MCCORMICK	100%	0%	100%	0%	0%
MARION	100%	0%	91%	0%	9%
MARLBORO	100%	0%	56%	11%	33%
NEWBERRY	100%	0%	88%	0%	12%
OCONEE	100%	0%	13%	0%	88%
ORANGEBURG	90%	10%	88%	0%	12%
PICKENS	97%	3%	31%	0%	69%
RICHLAND	93%	7%	85%	1%	14%
SALUDA	100%	0%	50%	0%	50%
SPARTANBURG	94%	6%	62%	0%	38%
SUMTER	97%	3%	76%	0%	24%
UNION	100%	0%	42%	0%	58%
WILLIAMSBURG	94%	6%	100%	0%	0%
YORK	93%	7%	52%	1%	47%
TRANSITIONAL ADM.	100%	0%	50%	0%	50%
<b>STATE TOTAL</b>	<b>96%</b>	<b>4%</b>	<b>71%</b>	<b>1%</b>	<b>29%</b>

Percent may not equal 100 due to rounding.

Gender not indicated in 6 cases

Race not indicated in 1 cases

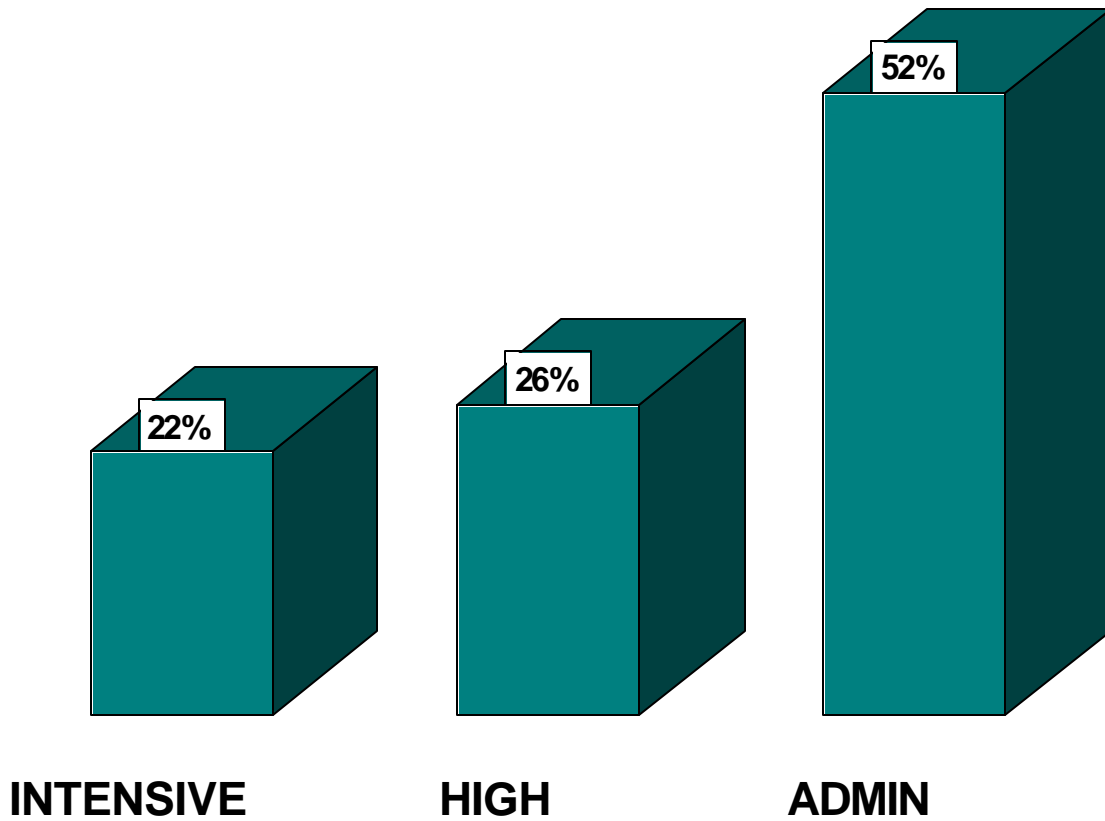
**S.C. DEPARTMENT OF  
PROBATION, PAROLE AND PARDON SERVICES  
ACTIVE YOA OFFENDERS BY LEVEL  
OF SUPERVISION, JUNE 30, 2004  
TABLE 3-D**

<b>COUNTY</b>	<b>ADMIN</b>	<b>HIGH</b>	<b>INTENSIVE</b>	<b>TOTAL</b>
ABBEVILLE	88%	13%	0%	8
AIKEN	54%	22%	24%	74
ALLENDALE	50%	40%	10%	10
ANDERSON	48%	24%	29%	63
BAMBERG	50%	50%	0%	4
BARNWELL	19%	56%	25%	16
BEAUFORT	77%	15%	8%	39
BERKELEY	49%	31%	20%	91
CALHOUN	25%	38%	38%	8
CHARLESTON	44%	30%	25%	266
CHEROKEE	63%	23%	15%	40
CHESTER	53%	5%	42%	19
CHESTERFIELD	29%	29%	42%	24
CLARENDON	65%	30%	5%	20
COLLETON	57%	30%	13%	30
DARLINGTON	44%	31%	26%	39
DILLON	64%	20%	16%	25
DORCHESTER	59%	15%	26%	87
EDGEFIELD	64%	18%	18%	11
FAIRFIELD	45%	27%	27%	11
FLORENCE	60%	22%	18%	89
GEORGETOWN	67%	24%	10%	21
GREENVILLE	39%	42%	19%	178
GREENWOOD	55%	28%	17%	53
HAMPTON	50%	17%	33%	12
HORRY	48%	28%	24%	58
JASPER	56%	38%	6%	16
KERSHAW	58%	21%	21%	24
LANCASTER	33%	43%	23%	30
LAURENS	72%	14%	14%	58
LEE	50%	25%	25%	4
LEXINGTON	59%	32%	8%	37
MCCORMICK	0%	50%	50%	2
MARION	36%	21%	44%	39
MARLBORO	52%	13%	35%	23
NEWBERRY	67%	17%	17%	30
OCONEE	39%	39%	21%	33
ORANGEBURG	72%	9%	20%	127
PICKENS	63%	28%	10%	40
RICHLAND	64%	21%	16%	204
SALUDA	60%	27%	13%	15
SPARTANBURG	27%	36%	37%	106
SUMTER	63%	25%	12%	51
UNION	52%	24%	24%	25
WILLIAMSBURG	72%	17%	11%	18
YORK	49%	27%	24%	112
RESTITUTION CENTERS	0%	0%	100%	8
<b>STATE TOTAL</b>	<b>52%</b>	<b>26%</b>	<b>22%</b>	<b>2,298</b>
* 16 Offenders Pending out of state transfer				
<b>ACTIVE YOA OFFENDERS</b>	<b>1,205</b>	<b>598</b>	<b>495</b>	<b>2,298</b>



# ACTIVE YOA OFFENDERS BY LEVEL OF SUPERVISION

## FIGURE 5



**S.C. DEPARTMENT OF  
PROBATION, PAROLE AND PARDON SERVICES  
YOA CLOSURES BY TYPE  
TABLE 4-D**

COUNTY	SUCCESSFUL	SUCCESSFUL RATE	UNSUCCESSFUL	UNSUCCESSFUL RATE
ABBEVILLE	4	50%	4	50%
AIKEN	14	67%	7	33%
ALLENDALE	1	17%	5	83%
ANDERSON	16	36%	29	64%
BAMBERG	5	83%	1	17%
BARNWELL	5	56%	4	44%
BEAUFORT	12	46%	14	54%
BERKELEY	17	45%	21	55%
CALHOUN	1	25%	3	75%
CHARLESTON	60	33%	121	67%
CHEROKEE	6	43%	8	57%
CHESTER	1	13%	7	88%
CHESTERFIELD	7	44%	9	56%
CLARENDON	3	33%	6	67%
COLLETON	6	35%	11	65%
DARLINGTON	16	52%	15	48%
DILLON	7	37%	12	63%
DORCHESTER	13	33%	26	67%
EDGEFIELD	1	25%	3	75%
FAIRFIELD	8	62%	5	38%
FLORENCE	30	49%	31	51%
GEORGETOWN	5	31%	11	69%
GREENVILLE	28	37%	47	63%
GREENWOOD	14	27%	37	73%
HAMPTON	2	50%	2	50%
HORRY	11	37%	19	63%
JASPER	11	79%	3	21%
KERSHAW	8	36%	14	64%
LANCASTER	5	31%	11	69%
LAURENS	11	46%	13	54%
LEE	2	50%	2	50%
LEXINGTON	9	50%	9	50%
MCCORMICK	0	0%	0	0%
MARION	7	37%	12	63%
MARLBORO	5	25%	15	75%
NEWBERRY	14	58%	10	42%
OCONEE	8	38%	13	62%
ORANGEBURG	22	50%	22	50%
PICKENS	10	53%	9	47%
RICHLAND	21	39%	33	61%
SALUDA	1	11%	8	89%
SPARTANBURG	20	25%	59	75%
SUMTER	17	43%	23	58%
UNION	7	54%	6	46%
WILLIAMSBURG	10	71%	4	29%
YORK	16	25%	49	75%
TRANSITIONAL ADMIN	2	100%	0	0%
<b>STATE TOTAL</b>	<b>499</b>	<b>39%</b>	<b>773</b>	<b>61%</b>

**S.C. DEPARTMENT OF  
PROBATION, PAROLE AND PARDON SERVICES  
YOA ADMISSIONS BY AGE\*  
TABLE 5-D**

<b>COUNTY</b>	<b>Age 24 &amp; Under</b>	<b>Percent 24 &amp; Under</b>	<b>Age 25 &amp; Over</b>	<b>Percent 25 &amp; Over</b>
ABBEVILLE	4	80%	1	20%
AIKEN	28	93%	2	7%
ALLENDALE	1	50%	1	50%
ANDERSON	41	91%	4	9%
BAMBERG	1	50%	1	50%
BARNWELL	16	94%	1	6%
BEAUFORT	23	88%	3	12%
BERKELEY	48	86%	8	14%
CALHOUN	2	67%	1	33%
CHARLESTON	165	87%	25	13%
CHEROKEE	14	82%	3	18%
CHESTER	15	83%	3	17%
CHESTERFIELD	19	90%	2	10%
CLARENDON	14	88%	2	13%
COLLETON	16	84%	3	16%
DARLINGTON	23	82%	5	18%
DILLON	20	95%	1	5%
DORCHESTER	44	83%	9	17%
EDGEFIELD	4	100%	0	0%
FAIRFIELD	7	70%	3	30%
FLORENCE	47	92%	4	8%
GEORGETOWN	12	92%	1	8%
GREENVILLE	78	88%	11	12%
GREENWOOD	33	94%	2	6%
HAMPTON	7	70%	3	30%
HORRY	32	94%	2	6%
JASPER	3	100%	0	0%
KERSHAW	18	90%	2	10%
LANCASTER	16	73%	6	27%
LAURENS	27	93%	2	7%
LEE	2	100%	0	0%
LEXINGTON	29	88%	4	12%
MCCORMICK	2	100%	0	0%
MARION	30	91%	3	9%
MARLBORO	14	78%	4	22%
NEWBERRY	16	94%	1	6%
OCONEE	14	88%	2	13%
ORANGEBURG	54	92%	5	8%
PICKENS	24	83%	5	17%
RICHLAND	113	90%	13	10%
SALUDA	4	100%	0	0%
SPARTANBURG	57	80%	14	20%
SUMTER	25	86%	4	14%
UNION	10	83%	2	17%
WILLIAMSBURG	17	94%	1	6%
YORK	77	95%	4	5%
TRANSITIONAL ADM.	1	50%	1	50%
<b>STATE TOTAL</b>	<b>1,267</b>	<b>88%</b>	<b>174</b>	<b>12%</b>

\*7 offender missing DOB.

*Section E*  
*Violations*



## Violations

---

**VIOLATIONS:** Offenders charged by their supervising agents with violations of the conditions of supervision are reviewed through an administrative hearing process to determine if probable cause of a violation exists. If a violation is found, a determination is made as to which community sanctions should be imposed, or whether the case should be referred to the Board or the Court for revocation action.

Table 1-E provides data by county on the violation process. Statewide, a total of 4,903 violation hearings were held. At those hearings, 2,846 cases were continued or recommended for continuation, while 2,057 cases were revoked or recommended for revocation.

Table 2-E provides a comparison of changes in active population and the type of closure for FY 99 to FY 04.

**S.C. DEPARTMENT OF  
PROBATION, PAROLE AND PARDON SERVICES  
VIOLATIONS BY COUNTY  
TABLE 1-E**

<b>COUNTY</b>	<b>CASES HEARD</b>	<b>CASES CONTINUED OR RECOMMENDED FOR CONTINUATION</b>	<b>CASES REVOKED OR RECOMMENDED FOR REVOCATION</b>
ABBEVILLE	2	1	1
AIKEN	144	80	64
ALLENDALE	28	21	7
ANDERSON	272	149	123
BAMBERG	25	13	12
BARNWELL	28	20	8
BEAUFORT	88	76	12
BERKELEY	118	79	39
CALHOUN	82	66	16
CHARLESTON	695	542	153
CHEROKEE	107	38	69
CHESTER	27	17	10
CHESTERFIELD	20	9	11
CLARENDON	47	30	17
COLLETON	30	26	4
DARLINGTON	48	25	23
DILLON	44	17	27
DORCHESTER	100	73	27
EDGEFIELD	10	2	8
FAIRFIELD	15	12	3
FLORENCE	166	77	89
GEORGETOWN	34	21	13
GREENVILLE	458	249	209
GREENWOOD	130	81	49
HAMPTON	26	19	7
HORRY	66	34	32
JASPER	26	22	4
KERSHAW	78	56	22
LANCASTER	84	61	23
LAURENS	57	29	28
LEE	23	15	8
LEXINGTON	304	97	207
MCCORMICK	42	7	35
MARION	36	26	10
MARLBORO	27	14	13
NEWBERRY	94	42	52
OCONEE	50	32	18
ORANGEBURG	190	110	80
PICKENS	69	43	26
RICHLAND	229	137	92
SALUDA	64	35	29
SPARTANBURG	251	134	117
SUMTER	221	83	138
UNION	39	25	14
WILLIAMSBURG	34	7	27
YORK	175	94	81
<b>STATE TOTAL</b>	<b>4,903</b>	<b>2,846</b>	<b>2,057</b>

**SC DEPARTMENT OF  
PROBATION, PAROLE AND PARDON SERVICES  
CLOSING BY TYPE  
TABLE 2-E**

**FY 03-04**

	<b>Active Population</b>	<b>Successful</b>	<b>Exp-I</b>	<b>JC-I</b>	<b>Rev-C</b>	<b>Rev-T</b>	<b>Rev-TC</b>	<b>Total Unsuccessful</b>
Probation	27,750	10,825	19	21	504	4,786	89	5,419
Parole	2,919	943	14	0	27	306	7	354
YOA	2,314	499	4		85	648	36	773
Early Releases	*	351	5	0	0	21	0	26
<b>Total**</b>	<b>33,105</b>	<b>12,618</b>	<b>42</b>	<b>21</b>	<b>616</b>	<b>5,761</b>	<b>132</b>	<b>6,572</b>
<b>% Unsuccessful</b>			0.6%	0.3%	9.4%	87.7%	2.0%	

\*Included in Parole

**\*\* NGRI = 122**

	<b>Active Population</b>	<b>Successful</b>	<b>Exp-I</b>	<b>JC-I</b>	<b>Rev-C</b>	<b>Rev-T</b>	<b>Rev-TC</b>	<b>Total Unsuccessful</b>
Probation	27,627	11,320	18	34	553	4,650	82	5,337
Parole	3,487	984	13	0	50	322	9	394
YOA	2,091	554	5	0	106	642	62	815
Early Releases	*	328	4	0	0	36	0	40
<b>Total</b>	<b>33,205</b>	<b>13,186</b>	<b>40</b>	<b>34</b>	<b>709</b>	<b>5,650</b>	<b>153</b>	<b>6,586</b>
<b>% Unsuccessful</b>			0.6%	0.5%	10.8%	85.8%	2.3%	

\*Included in Parole

**FY 01-02**

	<b>Active Population</b>	<b>Successful</b>	<b>Exp-I</b>	<b>JC-I</b>	<b>Rev-C</b>	<b>Rev-T</b>	<b>Rev-TC</b>	<b>Total Unsuccessful</b>
Probation	28,199	11,399	8	54	466	4,211	92	4,831
Parole	3,726	1,000	6	0	38	345	17	406
YOA	2,179	600	5	0	95	611	49	760
Early Releases	*	391	1	0	1	31	0	33
<b>Total</b>	<b>34,104</b>	<b>13,390</b>	<b>20</b>	<b>54</b>	<b>600</b>	<b>5,198</b>	<b>158</b>	<b>6,030</b>
<b>% Unsuccessful</b>			0.3%	0.9%	10.0%	86.2%	2.6%	

\*Included in Parole

**FY 00-01**

	<b>Active Population</b>	<b>Successful</b>	<b>Exp-I</b>	<b>JC-I</b>	<b>Rev-C</b>	<b>Rev-T</b>	<b>Rev-TC</b>	<b>Total Unsuccessful</b>
Probation	28,679	12,491	9	46	458	4,143	117	4,773
Parole	3,790	1,074	6	0	35	314	16	371
YOA	2,326	548	1	0	112	632	49	794
Early Releases	*	358	2	0	0	49	0	51
<b>Total</b>	<b>34,795</b>	<b>14,471</b>	<b>18</b>	<b>46</b>	<b>605</b>	<b>5,138</b>	<b>182</b>	<b>5,989</b>
<b>% Unsuccessful</b>			0.3%	0.8%	10.1%	85.8%	3.0%	

\*Included in Parole

**FY 99-00**

	<b>Active Population</b>	<b>Successful</b>	<b>Exp-I</b>	<b>JC-I</b>	<b>Rev-C</b>	<b>Rev-T</b>	<b>Rev-TC</b>	<b>Total Unsuccessful</b>
Probation	29,978	12,267	2	39	579	4,496	142	5,258
Parole	3,770	849	6	0	34	355	18	413
YOA	2,453	553	1	0	116	522	67	706
SF-2A	*	454	2	0	0	53	1	56
<b>Total</b>	<b>36,201</b>	<b>14,123</b>	<b>11</b>	<b>39</b>	<b>729</b>	<b>5,426</b>	<b>228</b>	<b>6,433</b>
<b>% Unsuccessful</b>			0.2%	0.6%	11.3%	84.3%	3.5%	

\*Included in Parole

**FY 98-99**

	<b>Active Population</b>	<b>Successful</b>	<b>Exp-I</b>	<b>JC-I</b>	<b>Rev-C</b>	<b>Rev-T</b>	<b>Rev-TC</b>	<b>Total Unsuccessful</b>
Probation	25,429	11,901	6	18	621	3,979	112	4,736
Parole	3,143	883	3	0	40	369	15	427
YOA	2,433	598	8	0	131	540	43	722
Early Releases	181	471	5	0	0	88	4	97
<b>Total</b>	<b>31,186</b>	<b>13,853</b>	<b>22</b>	<b>18</b>	<b>792</b>	<b>4,976</b>	<b>174</b>	<b>5,982</b>
<b>% Unsuccessful</b>			0.4%	0.3%	13.2%	83.2%	2.9%	

# *Summary*





## Summary

---

Chart 1 summarizes the population characteristics of SCDPPPS offenders by supervision programs, Probation, Parole and YOA as well as offender involvement in drug testing.

The proportion of violent offenses among probationers and YOA admissions during FY03-04 was small, ranging from 2% to 4%, with the percentage of violent offenses for parole admissions 21%, higher than for any other offender category.

Overall, the most utilized level of supervision was administrative (68%), followed by high (27%), and intensive (5%) for all cases. Changes were made in the offender classification process that has resulted in the shift from FY03.

The overall success rate for closures was 66% during the fiscal year. The overall success rate for parolees was 77%. Both probationers, (67%) and YOA offenders, (39%), had less successful closures rates than parolees.

Of the 15,295 offenders that were tested for drug use while under our supervision, 5,828, or 38.1%, tested positive for drugs. The decrease in testing was due to resources available during FY03-04.

Chart 2 compares the number of admissions for each fiscal year from 1987 to 2004. Admissions to supervision are the lowest since FY 87. Admissions decreased for FY03-04 by 17.7% from the previous fiscal year.

Chart 3 displays violent admissions by program for fiscal year 1993 to 2004. Due to the small number of early release offenders for FY 03-04 they were included in parole. YOA offenders showed a slight increase in violent admissions over the previous fiscal year.

**S.C. DEPARTMENT OF  
PROBATION, PAROLE AND PARDON SERVICES  
POPULATION CHARACTERISTICS  
CHART 1**

**ADMISSIONS**

<u>CATEGORY:</u>	<u>PROBATION</u>		<u>PAROLE</u>		<u>YOA</u>		<u>TOTAL</u>	
	FY 03	FY 04	FY 03	FY 04	FY 03	FY 04	FY 03	FY 04
<b><u>RACE:</u></b>								
BLACK	57%	54%	68%	68%	70%	71%	59%	57%
WHITE	43%	44%	32%	31%	30%	29%	41%	41%
OTHER	*	2%	*	1%	*	1%	*	2%
* Data Not capture in FY 03								
<b><u>GENDER:</u></b>								
MALE	80%	81%	89%	88%	97%	96%	82%	83%
FEMALE	20%	19%	11%	12%	3%	4%	18%	12%
<b><u>OFFENSE TYPE:</u></b>								
VIOLENT	2%	2%	26%	21%	2%	3%	4%	4%
NON-VIOLENT	98%	98%	74%	79%	98%	97%	96%	96%

**ACTIVES**

<u>LEVEL OF SUPERVISION:</u>	FY 03	FY 04	FY 03	FY 04	FY 03	FY 04	FY 03	FY 04
ADMINISTRATIVE	42%	70%	52%	66%	21%	52%	42%	68%
HIGH RISK	55%	28%	37%	23%	53%	26%	53%	27%
INTENSIVE	2%	2%	11%	12%	26%	22%	5%	4%

**CLOSURES**

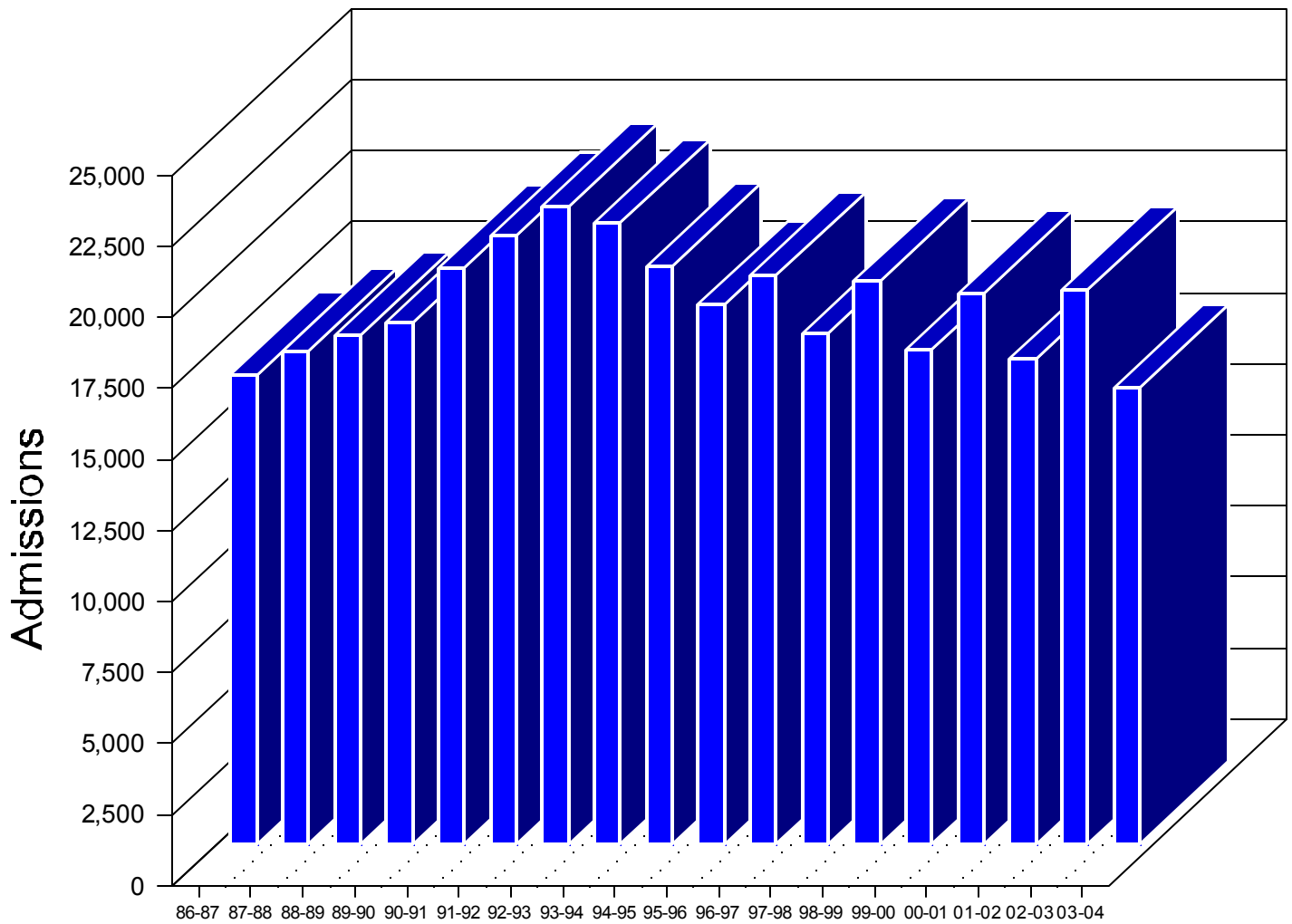
<u>CASE OUTCOME:</u>	FY 03	FY 04	FY 03	FY 04	FY 03	FY 04	FY 03	FY 04
SUCCESSFUL	68%	67%	75%	77%	40%	39%	67%	66%
UNSUCCESSFUL	32%	33%	25%	23%	60%	61%	33%	34%

**DRUG TESTING**

	<u>FY 03</u>	<u>FY 04</u>
INDIVIDUAL OFFENDERS TESTED	18,127	15,295
INDIVIDUALS TESTING POSITIVE	6,161	5,828
% OF INDIVIDUAL OFFENDERS TESTING POSITIVE	33.99%	38.10%
TOTAL POSITIVE TESTS	9,804	9,622
NUMBER OF TIMES OFFENDERS TESTED	28,488	22,957

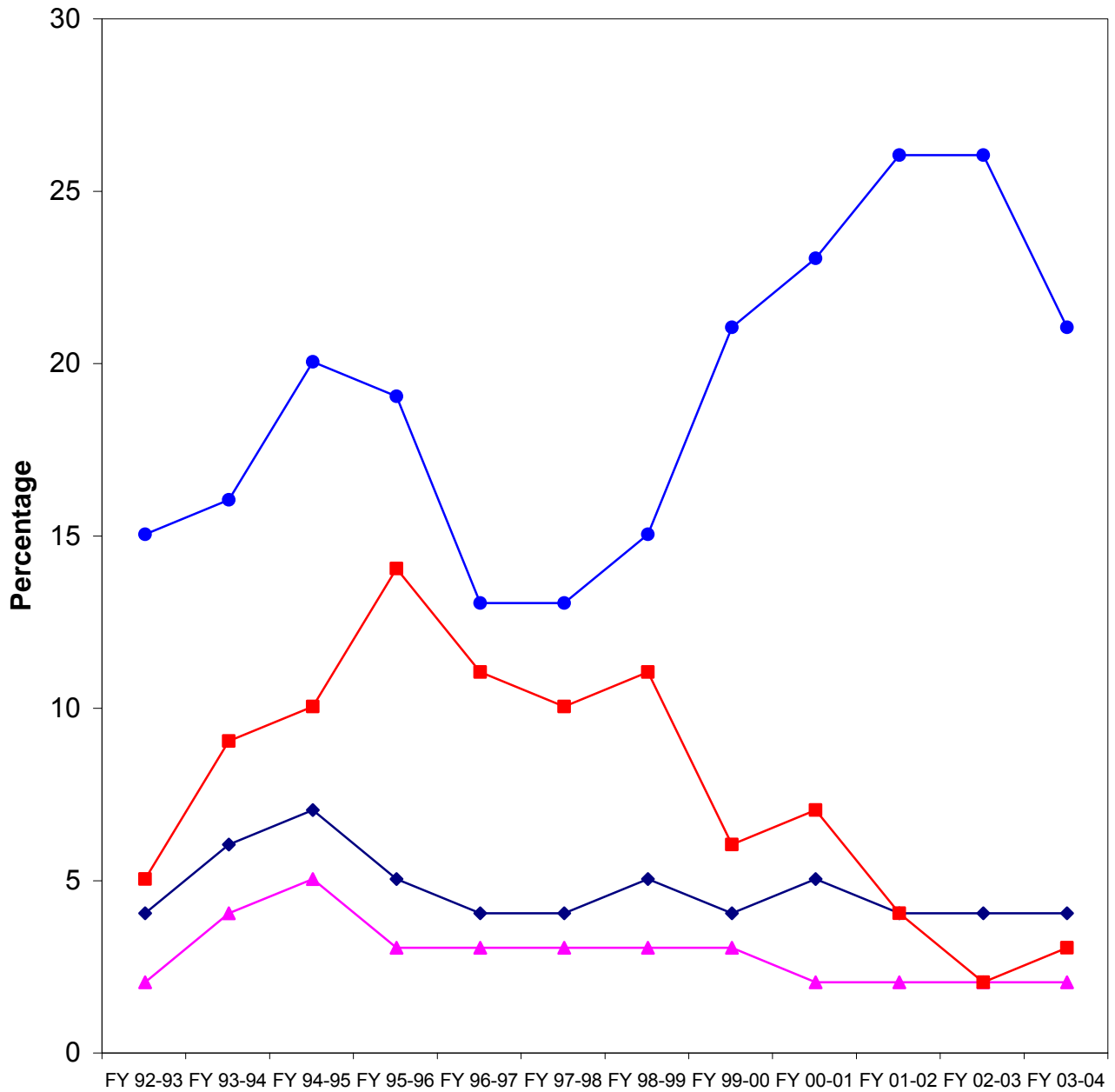
# ADMISSIONS COMPARING 1987 - 2004

## CHART 2



# VIOLENT ADMISSIONS BY PROGRAM AND FISCAL YEAR

## Chart 3



◆ ALL ADMISSIONS   
 ▲ PROBATION   
 ● PAROLE   
 ■ YOA

Early Release included in Parole for FY 96-98, FY99-00 & FY00 thru 04

**S.C. DEPARTMENT OF PROBATION, PAROLE AND PARDON SERVICES**

***Samuel B. Glover, Director***

**Office of Program Development and Grants Management**

***Tony Dukes - Research Director***  
***Marchar P. Stagg - Statistical & Research Analyst***  
***Emily Nance - Graduate Research Assistant***