

p9606
1.978
cop.3

S. C. STATE LIBRARY

MAR 5 1979

STATE DOCUMENTS

One Hundredth Annual Report

of the

Public Service Commission of South Carolina

1977-1978

FRED A. FULLER, JR., Chairman
J. LEWIS MOSS, Vice-Chairman
F. JULIAN LEAMOND
RUDOLPH MITCHELL
J. HENRY STUCKEY
HENRY G. YONCE
GUY BUTLER

Commissioners

JAMES H. STILL, Executive Director
ROBERT T. BOCKMAN, General Counsel
J. T. SMITH, Director Transportation Division
ROBERT E. McMILLAN, Asst. Director Transportation Division
CHARLES W. BALLENTINE, Director Utilities Division
W. HAROLD GOODING, Assistant Director Utilities Division

PRINTED UNDER THE DIRECTION OF THE
STATE BUDGET AND CONTROL BOARD

One Hundredth Annual Report

of the

Public Service Commission of South Carolina

1977-1978

FRED A. FULLER, JR., Chairman

J. LEWIS MOSS, Vice-Chairman

F. JULIAN LEAMOND

RUDOLPH MITCHELL

J. HENRY STUCKEY

HENRY G. YONCE

GUY BUTLER

Commissioners

JAMES H. STILL, Executive Director

ROBERT T. BOCKMAN, General Counsel

J. T. SMITH, Director Transportation Division

ROBERT E. McMILLAN, Asst. Director Transportation Division

CHARLES W. BALLENTINE, Director Utilities Division

W. HAROLD GOODING, Assistant Director Utilities Division

PRINTED UNDER THE DIRECTION OF THE
STATE BUDGET AND CONTROL BOARD

LETTER OF TRANSMITTAL

OFFICE OF PUBLIC SERVICE COMMISSION

To His Excellency, James B. Edwards, Governor of South Carolina:

Sir:

We have the honor to transmit herewith the One Hundredth Annual Report of the Public Service Commission of South Carolina for the year ending June 30, 1978.

Yours respectfully,

FRED A. FULLER, JR., Chairman

J. LEWIS MOSS, Vice-Chairman

F. JULIAN LEAMOND

RUDOLPH MITCHELL

J. HENRY STUCKEY

HENRY G. YONCE

GUY BUTLER

Commissioners

JAMES H. STILL

Executive Director

ANNUAL REPORT OF THE PUBLIC SERVICE
COMMISSION OF SOUTH CAROLINA

To the General Assembly of South Carolina:

The Public Service Commission has the honor to respectfully submit for your consideration this its One Hundredth Annual Report.

Below is the personnel of the present Commission and the Counties comprising the seven districts:

First District

F. Julian LeMondCharleston, S. C.
Berkeley, Charleston, Clarendon, Colleton, Dorchester

Second District

Rudolph MitchellSaluda, S. C.
Aiken, Allendale, Bamberg, Barnwell, Beaufort, Edgefield, Hampton, Jasper, Saluda

Third District

Guy ButlerGreenwood, S. C.
Abbeville, Anderson, Greenwood, McCormick, Newberry, Oconee, Pickens

Fourth District

Fred A. Fuller, Jr., Chairman.....Greenville, S. C.
Greenville, Laurens, Spartanburg, Union

Fifth District

J. Lewis Moss, Vice-ChairmanYork, S. C.
Cherokee, Chester, Chesterfield, Fairfield, Kershaw, Lancaster, York

Sixth District

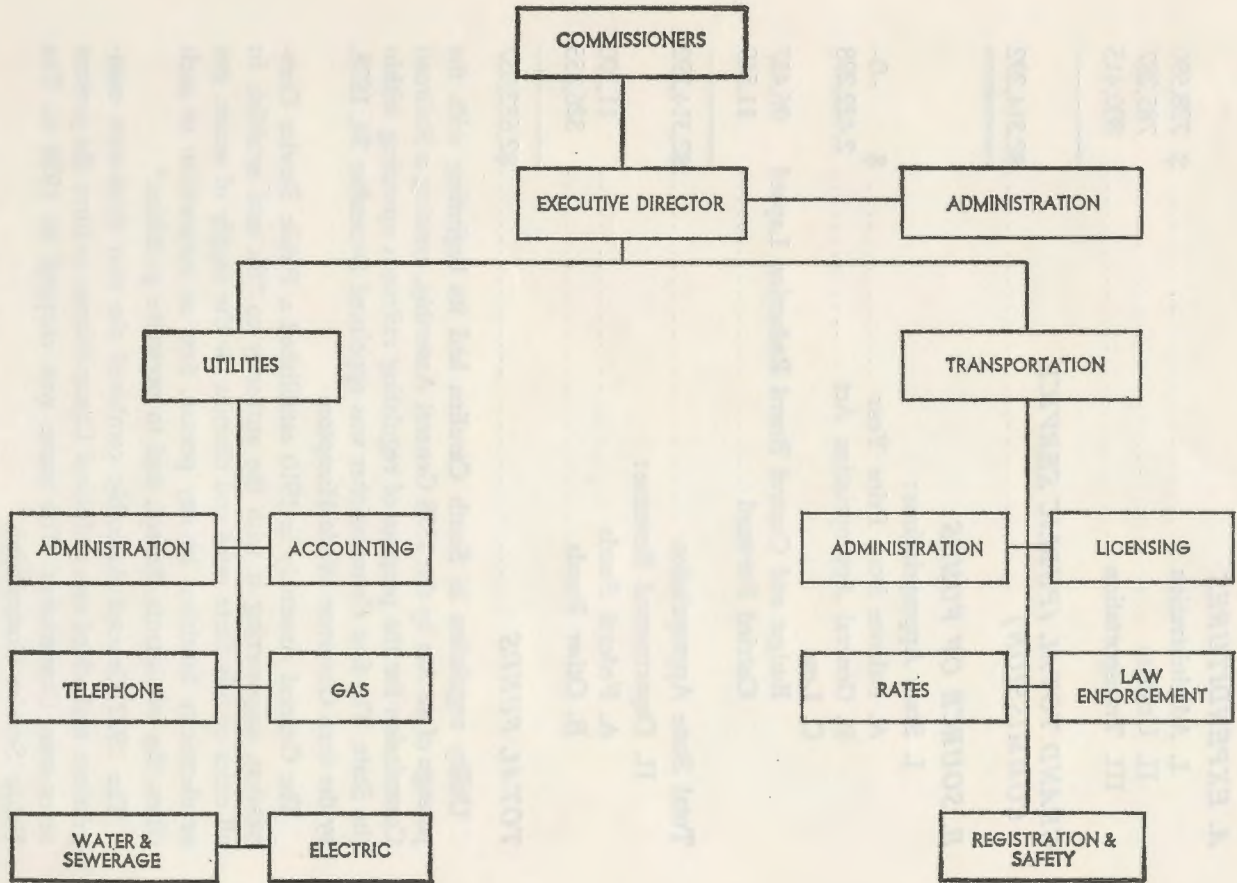
J. Henry StuckeyKingstree, S. C.
Darlington, Dillon, Florence, Georgetown, Horry, Marion, Marlboro, Williamsburg

Seventh District

Henry G. YonceColumbia, S. C.
Calhoun, Lee, Lexington, Orangeburg, Richland, Sumter

TABLE OF CONTENTS

	PAGE
Commissioners	3
Organizational Chart	5
Summary of Expenditures	6
Introduction	6
Utilities Division:	
Administration	9
Gas Department	22
Water and Sewerage Department	33
Telephone and Telegraph Department	42
Electric Department	49
Accounting Department	10
Transportation Division:	
Administration	66
Licensing Department	69
Enforcement and Safety Department	72
Audit Department	75
Rails and Tariffs Department	76
Registration Department	81



SUMMARY OF EXPENDITURES

A. EXPENDITURES

I. Administration	\$ 728,590
II. Utilities	785,287
III. Transportation	800,415

GRAND TOTAL (PUBLIC SERVICE COMMISSION)	\$2,314,292
--	--------------------

B. SOURCE OF FUNDS

I. State Appropriations:

A. Balance from Prior Year	\$ -0-
B. General Appropriation Act	2,422,298
C. Less	
Budget and Control Board Reduction Lapsed	96,437
Carried Forward	11,569

Total State Appropriation	\$2,314,292
---------------------------------	-------------

II. Departmental Revenue:

A. Federal Funds	11,390
B. Other Funds	326,355

TOTAL FUNDS	\$2,652,037
--------------------------	--------------------

Utility regulation in South Carolina had its beginning with the passage of an Act by the 1878 General Assembly, creating a Railroad Commission for the purpose of regulating railroads operating within the State. The first Commissioner was appointed December 24, 1878, by the then Governor Wade Hampton.

The General Assembly in 1910 established a Public Service Commission, empowering it with the authority to "fix and establish in all cities of this State rates and charges for the supply of water, gas or electricity furnished by any person, firm or corporation to such cities, the inhabitants thereof, and to prescribe penalties."

The 1922 General Assembly combined the two three-man commissions and added one additional Commissioner to form the present seven-man Commission. The name was changed in 1934 to The Public Service Commission.

The present Commission is elected by the Joint Assembly for a term of four years, one from each of the seven Commission Districts.

Authority vested in this body by Statute is to:

1. Regulate and supervise the privately-owned electric utilities as to their rates, charges, services, facilities, practices, accounting procedures, the purchase, sale or lease of utility property and the issuance of securities, as well as administer the Rural Electric Cooperative Act pertaining to territorial boundaries and also administer the Utility Facility Siting and Environmental Protection Act.

2. Approve rates and supervise services of all privately and publicly-owned telephone and telegraph companies as well as radio common carrier companies within the State.

3. Regulate rates and charges, services, facilities, practices and accounting procedures of all intrastate privately-owned gas, water and sewerage companies, and administer the Gas Safety Act enacted by the 1970 General Assembly.

4. Supervise and regulate for-hire motor carriers of persons and property as to authorities, rates, services, charges, schedules, insurance, safety, practices and facilities. Consider applications for Certificates of Public Convenience and Necessity, revoke and suspend same for cause. Issue drivers' permits. The Registration and Safety Act, as passed by the 1970 General Assembly, is also administered by this agency. Enforcement of the rules and regulations of the Transportation Division by uniformed Inspectors in marked patrol cars throughout the State.

During the past fiscal year, the Transportation Division dispensed license tags to 9,883 operating units varying in price from \$7.50 to \$125.00 each, according to payload. The various fees assessed produced a revenue of \$1,726,752.39.

As of June 30, 1978, sixty-five electric, gas, telephone, telegraph, and radio common carrier utilities were operating within the State with a total plant investment of 3.8 Billion Dollars generating gross revenues of 1.4 Million Dollars. The 168 water and sewerage companies operating within the State generated 5.1 Million Dollars of gross revenue.

The monies appropriated for these functions are obtained as follows:

Electric, gas, telephone, telegraph, radio common carrier, water and sewerage companies are assessed on a gross revenue basis for the operation of the Administration and Utilities Divisions. The funds for the operation of the Transportation Division are deducted from the fees collected from the sale of licenses and the assessment

of railroads. The remainder is deposited with the State Treasurer for distribution to the cities and towns which amounted to \$986,001.

Revenues from the registration of trucks and the sale of identification stickers are used to defray operating expenses appropriated for the administration of the Registration and Safety Act. Any remaining funds are deposited with the State Treasurer.

From the tremendous growth of industry in the State in the past several years, coupled with the expanding economy, as evidenced by the above figures, conservative projections indicate that utility installations will more than double within the next ten years. During the past fiscal year, the Commission processed six hundred and eighteen (618) applications; hearings were held thereon when necessary, and Orders issued.

UTILITIES DIVISION

The function of the Utilities Division of The Public Service Commission is to perform the necessary duties related to the regulation of utilities under the jurisdiction of the Commission. The administrative staff plans, coordinates, directs and supervises the work of its five departments as shown below.

- I. Accounting Department
- II. Electric Department
- III. Gas Department
- IV. Telephone and Telegraph Department
- V. Water and Sewerage Department

The activities of this Division for the fiscal year 1977-78, affecting the various utility groups, are summarized by each Department on the following pages of this report. Two hundred and thirty-seven Orders were issued through this Division during the fiscal year, and public hearings were held in connection with eighty of these.

ACCOUNTING DEPARTMENT

The Accounting Department is composed of nine Accountants and one Statistical Clerk who report to the Accounting Manager. During the fiscal year, two additional Accountants were added to the Staff.

The Accounting Department's primary function is to examine the books and records of Utility Companies which are requesting an increase or change in rates. A Rate Case examination implements principles and procedures based upon regulatory laws and in this respect differs from audits conducted by a Utility Company's Public Accountants. After the examination, the Staff makes adjustments in the Company's operations to achieve a "normalized" test year. Staff's Exhibits and Testimony are directed toward the Company's operations and Staff's Adjustments. Based on the Staff's report and Company information the Commissioners are able to determine an equitable rate of return on the Company's investment.

The Staff utilizes an Auditape System which is a generalized computer program designed to perform arithmetic calculations, special analyses, and statistical sampling. The Accounting Staff implements the Auditape in the examination of Utility Company's accounting records for Rate Case Audits. The Auditape is an effective and efficient means to sample the Utility's expenses and plant additions in order to verify compliance with this Commission's policies and procedures.

The Staff also insures that proper cut offs of the test year are implemented as well as substantiating that revenues, expenses, and rate items are allocated according to proper jurisdiction. Employing these procedures, Staff verifies the Utility's operations and verifies the books and records to the filing and related Exhibits.

Emphasis is placed upon policies and procedures and the instructions thereto, as stated in the Chart of Accounts for the various types of Utilities. The Chart of Accounts outlines which revenues, expenses, and asset accounts that will ultimately determine the Utilities' Rate of Return on Rate Base.

After completing the examination, a Report is prepared with Exhibits and a written explanation of each of the Exhibits. Copies are distributed to each Commissioner, the Company, Protestors, members of the Staff, and other Parties of Record. A member of the Staff will testify and submit the Report into evidence during the Hearing.

Due to changes in the level of Gas and Coal costs the Accounting Department developed the Special Studies Section. The Special

Studies Section is responsible for Auditing the Fuel Adjustment Clause of the Electric Utilities and the various clauses utilized by the Gas Utilities. These audits are performed every six months on the larger Utilities and consist of sampling techniques to verify refunds or additional changes made on the customers' bills.

The Accounting Department administers the Gross Receipts Tax for Regulatory Expenses paid on an annual basis by the Utilities serving customers in South Carolina. The Utilities are required to report their Revenues received within the State, the Tax Assessments are based on these Revenues.

RATE CASES DURING 1977-1978

1. A. D. Hare Water Works
2. Carolina Pipeline Company
3. Carolina Power and Light Company
4. Carolina Water Service
5. Development Services, Inc.
6. Heath Springs Light and Power Company
7. Home Telephone Company, Inc.
8. Hughes Water Systems, Inc.
9. Isle of Palms Water Company
10. Lakewood Subdivision/Clyde G. Branham
11. Lockhart Power Company
12. Mobile Phone of Charleston, Inc.
13. Palmetto Rural Telephone Cooperative, Inc.
14. Piedmont Natural Gas Company, Inc.
15. Pimlico Utilities, Inc.
16. Ray F. Patton d/b/a P.P.R. & M. Environmental Systems Company
17. Ridge Telephone Company
18. Rock Bluff Utilities
19. South Carolina Electric and Gas Company
20. Standard Water Company
21. Storm Branch Sewers, Inc.
22. Village Utilities, Inc.
23. Williston Telephone Company
24. Woodland Utilities, Inc.

The Electric utilities are required to have the approval of the Commission on financing with maturity date of more than one year.

The following is a list of the various securities applied for and authority granted for issuance thereof:

Carolina Power and Light Company
Raleigh, North Carolina

To issue and sell 1,300,000 additional shares of Common Stock without par value.

To issue and sell \$100,000,000 Principal amount of First Mortgage Bonds due October 1, 2007.

To issue and sell 1,500,000 additional shares of Common Stock without par value.

To issue and sell a maximum of 90,000 additional shares of Common Stock without par value. The sale will be used to purchase assets of Domestic Electric Service, Inc., with an estimated \$1,750,000.

To issue and sell a maximum of \$100,000,000 Principal amount of First Mortgage Bonds, due June 1, 2008.

Duke Power Company
Charlotte, North Carolina

To issue and sell a maximum of \$125,000,000 Principal amount of a new series of First and Refunding Mortgage Bonds.

To issue and sell a maximum of 500,000 shares of proposed stock.

To issue and sell 5,500,000 shares of Common Stock without par value.

To issue and sell 500,000 Shares of proposed stock to five Insurance Companies at a price of \$100 per share.

To issue and sell 850,000 shares of Common Stock without par value.

South Carolina Electric and Gas Company
Columbia, South Carolina

To issue and sell not to exceed 2,000,000 additional Shares of Common Stock at \$4.50 par value per share.

To issue and sell not to exceed \$50,000,000 of First and Refunding Mortgage Bonds.

To issue and sell additional \$5,306,000 Principal amount of First Refunding Mortgage Bonds, 3% Series.

To issue and sell not to exceed \$40,000,000 of First and Refunding Mortgage Bonds.

The Accounting Department has prepared Tables showing Operating Revenues, Operating Expenses, Net Operating Income, State and Local Taxes paid, and Gross Plant In Service for South Carolina Operations Only, for Electric, Gas, Telephone and Telegraph, Mobile

Communications, Water and Sewerage Utilities operating in South Carolina.

TABLE A—Privately Owned Electric Utilities Operating in South Carolina. Selected Statistics for South Carolina only. For the Years Ended December 31, 1974-1977.

TABLE B—Gas Utilities Operating in South Carolina. Selected Statistics for South Carolina only. For the Years Ended December 31, 1974-1977.

TABLE C—Telephone and Telegraph Utilities Operating in South Carolina. Selected Statistics for South Carolina only. For the Years Ended December 31, 1976-1977.

TABLE D—Mobile Communications Utilities in South Carolina. Selected Statistics for South Carolina only. For Fiscal and Calendar Year 1977.

TABLE E—Water Utilities Operating in South Carolina. Selected Statistics for South Carolina only. For Fiscal and Calendar Year 1977.

TABLE F—Sewerage Utilities Operating in South Carolina. Selected Statistics for South Carolina only. For Fiscal and Calendar Year 1977.

TABLE A

PRIVATELY-OWNED ELECTRIC UTILITIES OPERATING IN SOUTH CAROLINA
 SELECTED STATISTICS FOR SOUTH CAROLINA ONLY
 FOR THE YEARS ENDED DECEMBER 31, 1974-1977

<i>Company</i>	<i>Gross Operating Revenues</i>	<i>Operating Expenses</i>	<i>Net Operating Income</i>	<i>Total State and Local Taxes Paid</i>	<i>Gross Plant In Service</i>
Carolina Power and Light Company	\$	\$	\$	\$	\$
1974	82,794,407	59,939,528	22,854,879	4,036,760	212,283,510
1975	97,789,137	76,304,750	21,484,387	5,152,204	284,353,782
1976	116,912,875	64,252,937	52,659,938	6,476,479	298,822,835
1977	133,302,690	101,901,396	31,401,294	6,439,667	357,331,616
Clinton Mills					
1974	103,671	158,804	(55,133)	169	168,215
1975	134,818	167,830	(33,012)	166	168,527
1976	171,557	172,233	(676)	193	175,065
1977	188,394	195,896	(7,502)	235	175,065
Duke Power Company					
1974	247,592,583	201,111,892	46,480,691	16,404,400	950,910,328
1975	254,780,000	198,658,000	56,122,000	19,028,941	910,049,000
1976	339,627,000	200,530,000	139,097,000	22,754,046	1,060,241,000
1977	336,741,000	214,172,000	122,569,000	26,363,046	978,806,000
Heath Springs Light and Power Company					
1974	221,275	211,869	9,406	8,446	286,259
1975	258,829	244,963	13,866	9,295	287,224
1976	284,084	267,223	16,861	10,578	300,699
1977	321,909	306,145	15,764	10,545	209,999

Lockhart Power Company

1974	4,219,886	3,952,804	267,082	110,777	8,392,121
1975	4,875,192	4,546,994	328,198	125,067	8,569,071
1976	6,022,509	5,122,195	900,314	140,858	8,872,037
1977	6,724,955	6,452,034	272,921	135,358	9,925,846

South Carolina Electric and Gas Company

1974	228,856,317	186,536,687	42,319,630	14,639,198	741,344,509
1975	263,773,207	212,040,260	51,732,947	16,828,122	770,703,869
1976	275,891,390	181,931,412	93,959,978	18,463,953	797,056,067
1977	337,926,832	274,863,891	63,062,941	22,340,263	825,915,220

Totals

1974	563,788,139	451,911,584	111,876,559	35,199,750	1,913,384,942
1975	621,611,183	491,962,797	129,648,386	41,143,795	1,974,131,473
1976	738,909,415	452,276,000	286,633,415	47,846,107	2,165,467,703
1977	815,205,780	597,891,362	217,314,418	55,289,114	2,172,363,746

TABLE B

**GAS UTILITIES OPERATING IN SOUTH CAROLINA
SELECTED STATISTICS FOR SOUTH CAROLINA ONLY
FOR THE YEARS ENDED DECEMBER 31, 1974-1977**

<i>Company</i>	<i>Gross Operating Revenues</i>	<i>Operating Expenses</i>	<i>Net Operating Income</i>	<i>Total State and Local Taxes Paid</i>	<i>Gross Plant In Service</i>
Carolina Pipeline Company	\$	\$	\$	\$	\$
1974	36,383,829	32,634,796	3,749,033	962,289	41,396,208
1975	39,633,633	35,796,561	3,837,072	1,338,776	44,323,747
1976	41,609,124	32,244,469	9,364,655	1,140,529	42,090,772
1977	43,938,304	40,596,679	3,341,625	1,084,377	33,156,740
Peoples Natural Gas of South Carolina					
1974	2,819,472	2,540,380	279,092	77,109	3,496,979
1975	2,973,625	2,742,246	231,379	108,380	3,579,674
1976	3,541,615	2,779,633	761,982	93,049	3,982,196
1977	3,998,236	3,769,744	228,492	135,895	4,049,814
Piedmont Natural Gas Company					
1974	20,762,086	17,668,754	3,093,332	885,155	35,871,486
1975	20,359,969	17,700,895	2,659,074	667,672	36,518,599
1976	22,968,000	16,438,000	6,530,000	1,515,436	40,291,000
1977	29,721,165	26,476,848	3,244,317	1,039,196	38,032,237
South Carolina Electric and Gas Company					
1974	48,750,008	41,399,568	7,350,440	2,032,122	109,767,381
1975	55,378,788	47,505,828	7,872,960	2,489,951	112,771,146
1976	71,948,122	52,690,018	19,258,104	2,816,165	127,887,125
1977	78,405,485	71,977,511	6,427,974	2,871,859	130,625,649

United Cities Gas Company						
1974	1,459,842	1,331,130	128,712	59,696	2,296,988
1975	1,555,775	1,374,511	181,264	69,170	2,412,543
1976	1,442,039	1,021,163	420,876	94,237	2,564,542
1977	1,667,399	1,458,913	208,486	100,007	2,650,262
<hr/>						
Totals						
1974	110,175,237	95,574,628	14,600,609	4,016,371	192,829,042
1975	119,901,790	105,120,041	14,781,749	4,673,949	199,605,709
1976	141,508,900	105,173,283	36,335,617	5,659,416	216,815,635
1977	157,730,589	144,279,695	13,450,894	5,231,334	208,514,702

FOR THE PERIOD ENDED DECEMBER 31, 1977-1981
 UNITED STATES SECURITIES AND EXCHANGE COMMISSION
 REGISTRATION STATEMENT UNDER THE SECURITIES ACT OF 1933

TABLE C

**TELEPHONE AND TELEGRAPH UTILITIES OPERATING IN SOUTH CAROLINA
SELECTED STATISTICS FOR TOTAL SOUTH CAROLINA OPERATIONS
FOR THE YEARS ENDED DECEMBER 31, 1976-1977**

Company	Gross Operating Revenues		Operating Expenses		Net Operating Income or (Loss)		Gross Plant In Service	
	1976	1977	1976	1977	1976	1977	1976	1977
	\$	\$	\$	\$	\$	\$	\$	\$
Bluffton Telephone Company	300,309	397,029	229,762	229,492	70,547	167,537	1,151,095	1,200,668
Chesnee Telephone Company, Inc.	465,579	532,603	421,538	352,916	44,041	179,687	2,523,671	2,625,757
Chester Telephone Company	2,158,837	2,349,774	1,640,073	1,397,220	518,764	952,554	8,407,223	9,225,591
Continental Telephone Company of South Carolina	2,346,154	2,571,020	1,781,200	1,464,748	564,954	1,106,272	9,454,129	10,210,159
Farmers Telephone Cooperative	5,530,337	6,026,391	4,299,079	4,765,450	1,231,258	1,260,941	27,162,354	30,736,696
Fort Mill Telephone Company	1,353,382	1,558,066	1,076,179	1,004,460	277,203	553,606	5,327,954	5,553,974
General Telephone Company of South Carolina	34,971,000	36,873,045	26,079,763	21,312,025	8,891,237	15,561,020	109,080,124	117,536,988
Hargray Telephone Company	3,136,791	3,848,019	2,264,127	2,237,732	872,664	1,610,287	12,141,263	13,890,947
Heath Springs Telephone Company	132,353	144,436	91,184	81,483	41,169	62,953	366,181	415,559
Home Telephone Company	2,174,447	2,535,426	1,582,021	1,648,304	592,426	887,122	12,672,869	13,223,212
Horry Telephone Cooperative	3,681,512	4,464,750	3,038,813	3,360,239	642,699	1,104,511	22,999,395	27,302,579
Inman Telephone Company, Inc.	797,870	870,235	597,090	430,393	200,780	439,842	3,092,164	3,247,295
Lancaster Telephone Company	3,581,791	3,911,393	3,022,379	2,803,784	559,412	1,107,608	11,113,403	12,243,070
Lockhart Telephone Company	105,016	110,107	85,433	79,497	19,583	30,610	344,857	383,411
McClellanville Telephone Company	221,436	236,288	175,801	179,040	45,635	57,248	916,362	946,833
Mid-Carolina Telephone Company	460,628	609,100	339,331	335,929	121,297	273,171	17,516,587	61,540,215
Norway Telephone Company	110,440	118,809	67,883	75,644	42,557	43,165	365,335	407,869
Palmetto Telephone Cooperative	1,229,636	1,590,182	1,161,980	1,164,117	67,656	426,065	10,459,776	11,506,186
Piedmont Telephone Cooperative	1,247,060	1,380,658	947,680	1,004,459	299,380	376,200	9,354,573	254,172
Pond Branch Telephone Company	982,805	1,193,285	815,968	858,122	166,837	335,163	7,186,566	7,472,858
Ridge Telephone Company	211,597	244,521	182,831	175,858	28,766	68,663	1,307,049	1,395,572
Ridgeway Telephone Company	163,674	193,980	112,290	102,011	51,384	91,969	787,897	890,059
Rock Hill Telephone Company	7,712,319	8,526,982	6,313,577	5,481,690	1,398,742	3,045,292	25,521,856	26,806,619
Sandhill Telephone Company	1,686,728	1,880,326	1,013,270	1,085,440	653,458	794,886	7,784,699	10,680,750
Southern Bell Telephone and Telegraph Company	303,872,541	344,724,165	248,671,538	218,670,260	55,201,003	126,053,905	878,782,528	971,610,519
St. Matthews Telephone Company	715,389	775,166	510,995	436,914	204,394	338,252	3,432,481	3,589,472
St. Stephen Telephone Company	559,766	635,606	428,543	385,920	131,223	249,686	2,063,046	2,571,547
South Carolina Telephone	2,590,410	2,918,336	1,974,632	1,723,219	615,778	1,195,117	12,703,655	14,461,898
United Telephone/Carolinas	15,604,303	16,533,607	11,482,698	9,269,529	4,121,605	7,264,078	57,259,353	63,746,431
West Carolina Rural Telephone	904,747	1,145,173	728,814	749,505	175,933	395,668	5,562,708	5,757,111
Williston Telephone Company	768,977	832,951	609,589	674,144	159,388	158,807	4,489,968	4,725,764
Western Union 1	263,765	213,989	226,111	198,892	37,654	15,097	465,078	438,565
Totals	4,00,021,599	449,945,418	321,972,172	283,738,436	78,049,427	166,206,982	1,271,796,199	1,436,598,346

1 South Carolina Income apportioned by Plant In Service in South Carolina.

TABLE D

**MOBILE COMMUNICATIONS OPERATING IN SOUTH CAROLINA
SELECTED STATISTICS FOR SOUTH CAROLINA OPERATIONS ONLY
FOR THE YEAR ENDED DECEMBER 31, 1977**

<i>Company</i>	<i>Gross Operating Revenues</i>	<i>Operating Expenses</i>	<i>Net Operating Income (or Loss)</i>	<i>Plant In Service</i>
	\$	\$	\$	\$
Able Thomy d/b/a Able Answering Service	85,797.00	102,432.00	(16,635.00)	148,361.00
Asta Radio Common Carrier	201,514.00	157,114.00	44,400.00	126,694.00
Camden Mobile Communications	7,206.75	7,312.01	(105.26)	22,753.08
Columbia Telephone Answering Service d/b/a Able Paging	143,546.30	143,546.30	-0-	N/A
Eagle Aviation	16,965.00	14,424.00	2,541.00	83,754.00
Evans Radio Company Inc.	216,406.02	167,115.64	49,290.38	226,510.77
Morris Communications, Inc.	708,543.14	656,307.77	52,235.37	543,330.74
Myrtle Beach Radio Telephone and Paging Service	103,257.26	78,781.48	24,475.78	N/A
Parker Electronics	70,938.00	71,939.00	(1,001.00)	112,528.00
Tele-Pag of South Carolina	196,910.00	146,117.00	50,793.00	178,816.00
Totals	<u>1,751,083.47</u>	<u>1,545,089.20</u>	<u>205,994.27</u>	<u>1,352,747.59</u>

N/A Not Available.

TABLE E

**WATER UTILITIES OPERATING IN
SOUTH CAROLINA
SELECTED STATISTICS FROM ANNUAL REPORTS
SOUTH CAROLINA ONLY
FOR FISCAL YEAR AND CALENDAR YEAR, 1977**

<i>Company</i>	<i>Gross Operating Revenues</i>	<i>Operating Expenses</i>	<i>Net Operating Income or (Loss)</i>
	\$	\$	\$
2 Aqua Water Company	7,820.00	7,820.00	—0—
Bobo, Gene Well & Pump Company	40,025.00	39,126.91	898.59
Brookgreen Water Corporation	13,290.00	2,971.56	10,318.44
1 Carolina Water Service	481,926.00	388,412.00	93,514.00
Chinquapin Properties, Inc.	5,618.00	5,192.77	425.23
Clinton Mills	19,977.82	47,197.51	(27,219.69)
1 Clover Hill Water System	10,141.49	4,466.45	5,675.04
1 Commodore	20,028.00	9,001.00	11,027.00
2 Debordieu Colony Club	7,873.00	9,946.00	(2,073.00)
Duke Power Company	1,454,539.00	1,428,387.00	26,152.00
Edenwood Water Company	41,946.00	60,095.00	(18,149.00)
1 Foxwood Utilities	6,593.90	3,936.26	2,657.64
2 Glendale Water Corporation	115,569.00	143,237.00	(27,668.00)
Hare, A. D. Water Works	74,781.95	72,784.04	1,997.91
1 Heater Utilities, Inc.	285,382.69	306,859.70	(21,477.01)
Hilton Head Utilities, Inc.	12,458.52	22,078.59	(9,620.07)
2 Holly Utilities Company	16,122.42	16,122.42	—0—
Hughes Well Drilling and Pump Company	79,763.86	94,248.44	(14,484.58)
1 Isle of Palms Water Company	123,233.76	108,655.45	14,578.31
1 Kiawah Island Utility	25,728.00	60,840.00	(35,112.00)
Lake Marion Shores	5,115.00	2,236.26	2,878.74
1 Lake Murray Water and Sewer	10,801.00	8,359.00	2,442.00
1 Lockhart Power (Lockhart Village)	14,797.00	17,314.00	(2,517.00)
1 Lockhart Power (Monarch Village)	36,712.00	45,279.00	(8,567.00)
2 Mt. Gilead Realty Company, Inc.	5,700.00	5,700.00	—0—
1 Oak Grove Utilities Corporation	12,343.95	7,713.85	4,630.10
2 Ohio Engineering and Construction Company	5,823.00	5,823.00	—0—
Palmetto Utilities Company	12,417.00	12,417.00	—0—
1 Platt Water Company	43,423.91	59,659.11	(16,235.20)
Reynolds Water Works, Inc.	22,333.35	23,261.77	(928.42)
1 Seabrook Utilities Corporation	15,965.91	39,639.69	(23,673.78)
2 Standard Water Company	104,410.98	104,410.98	—0—
2 Tacoma Utilities, Inc.	15,369.00	15,116.00	253.00
2 Tranquil Utilities	20,329.99	14,290.62	6,039.37
Water Company of Edisto Beach	9,715.00	29,574.72	(19,859.72)
1 Water Distributors, Inc.	193,386.30	188,453.68	4,932.62
1 Westoe Plantation Land Company	7,694.00	7,126.00	568.00
2 Wikoff Utilities, Inc.	14,020.68	11,592.05	2,428.63
	3,393,176.98	3,429,344.83	(36,167.85)
Other Water Utilities	75,940.42	100,468.21	(24,527.79)
Totals	3,469,117.40	3,529,813.04	(60,695.64)

1 Revenues reported separately on Sewerage Report.
2 Combined Revenue (Sewerage) not broken down.

TABLE F

**SEWERAGE UTILITIES OPERATING IN
SOUTH CAROLINA
SELECTED STATISTICS FROM ANNUAL REPORTS
SOUTH CAROLINA ONLY
FOR FISCAL YEAR AND CALENDAR YEAR, 1977**

<i>Company</i>	<i>Gross Operating Revenues</i>	<i>Operating Expenses</i>	<i>Net Operating Income or (Loss)</i>
	\$	\$	\$
Alpine Utilities	227,029.24	185,672.19	41,357.05
Artistic Builders	7,025.15	7,520.36	(495.21)
Briarcreek Utilities	5,729.65	4,127.04	1,602.61
Brookside Sewer District	7,083.25	7,083.25	—0—
Bush River Utilities	99,040.00	75,082.00	23,958.00
1 Carolina Water Service	339,363.00	296,868.00	42,495.00
1 Commodore Utility Corporation	17,089.00	8,565.00	8,524.00
Consolidated Utility, Inc.	12,803.00	11,197.00	1,606.00
Country Club Sewer	6,640.00	6,640.00	—0—
Delta Investment Company	11,786.00	8,991.00	2,795.00
Development Services, Inc.	85,335.31	84,900.46	434.85
Farrow Terrace Utilities	7,860.40	7,570.61	289.79
Fripp Island Development Company	34,167.20	62,862.79	(28,695.59)
2 General Utilities	24,902.90	20,831.01	4,071.89
Greenhurst Utility Company	8,752.70	8,752.70	—0—
1 Heater Utilities	140,670.40	183,636.71	(42,966.31)
1 Isle of Palms Water Company	6,553.90	5,778.95	774.95
James Island Plantation	9,254.32	12,179.31	(2,924.99)
1 Kiawah Island Utility Company	24,833.00	34,676.00	(9,843.00)
Ladson Utilities	28,948.17	26,172.10	2,776.07
1 Lake Murray Water and Sewer	8,051.00	14,477.00	(6,426.00)
Leesburg Utilities, Inc.	10,861.50	11,426.31	(564.81)
1 Lockhart Power Company	10,244.00	12,737.00	(2,493.00)
Lynwood Utilities, Inc.	10,540.00	15,459.06	(4,919.06)
1 Oak Grove Estates Utilities	7,485.00	6,995.04	489.96
P.P.R. & M. c/o Environmental Systems	6,564.08	6,564.08	—0—
Pimlico Utilities	13,241.32	39,585.90	(26,344.58)
1 Pinedale Utility Company	10,908.50	14,174.17	(3,265.67)
Platt Water Company	35,785.82	4,849.42	30,936.40
Quail Arbor Estates	9,479.50	9,479.50	—0—
Quail Hollow Company	25,272.00	11,369.00	13,903.00
Seabrook Utilities Corporation	15,965.91	16,229.47	(263.56)
Sedgefield Sewerage Company, Inc.	27,559.67	43,853.74	(16,294.07)
South Carolina Utilities	8,931.60	11,087.15	(2,155.55)
St. James Utilities	63,638.00	31,537.00	32,101.00
Storm Branch Sewerage	7,749.77	2,458.51	5,291.26
Sunset Lagoon	46,029.30	46,029.30	—0—
Tall Pines Utilities, Inc.	43,596.00	44,527.63	(931.63)
2 Terraceway Service Company	93,059.65	113,020.39	(19,960.74)
Utilities, Inc.	13,651.00	9,763.30	3,887.70
Village Utilities	5,823.00	5,823.00	—0—
1 Water Distributors	10,144.85	5,818.60	4,326.25
1 Westoe Plantation Land	9,792.00	6,692.00	3,100.00
2 Woodland Utility, Inc.	16,662.00	8,824.92	7,837.08
Woodside—Woodview	21,228.80	25,755.53	(4,526.73)
	1,637,130.86	1,577,643.50	59,487.36
Other Sewer Utilities	42,173.09	111,114.31	(68,941.22)
Totals	<u>1,679,303.95</u>	<u>1,688,757.81</u>	<u>(9,453.86)</u>

1 Revenues reported separately on Water Report.

2 Combined Revenue (Water) not broken down.

GAS DEPARTMENT

There are six private corporation natural gas utilities serving customers in South Carolina. The rates and services of these utilities are subject to jurisdiction of the Public Service Commission. The natural gas utilities and the communities they serve are listed in the tables included in this report.

Historically, natural gas brought into South Carolina was produced principally in the gas fields of Louisiana and Texas, including the offshore areas in the Gulf of Mexico. Starting during the fall of 1978, it is anticipated that a large part of the gas consumed in the State will be coming from Algeria. Liquefied natural gas will be transported from Algeria to a regasification plant and marine terminal located on Elba Island, which is near Savannah, Georgia. This plant, operated by Southern Energy Company, will regasify the shipments and introduce the gas into pipelines owned and operated by Southern Natural Gas Company.

Gas is transported to South Carolina by two interstate pipeline Companies: Transcontinental Gas Pipe Line Company and Southern Natural Gas Company. Transcontinental's pipeline crosses the State in the northwest corner, passing just south of Anderson and Spartanburg, South Carolina, while Southern's pipeline enters and terminates in our State at a point near Aiken. All natural gas consumed in South Carolina is furnished by these two interstate pipelines which furnish gas to natural gas authorities and municipally owned gas utilities, as well as the privately owned utilities.

The Federal Energy Regulatory Commission, formally the Federal Power Commission, has jurisdiction over rates and services of interstate pipeline companies and the price of natural gas sold by producers to interstate pipelines. These price fluctuations have a direct bearing on the cost of natural gas to the ultimate consumer in South Carolina. During the past year, the Public Service Commission has participated in several proceedings before the Federal Regulatory Commission, to protect the interests of the people and the gas utilities in South Carolina.

The Commission received a number of complaints regarding services and charges from customers of the gas utilities. Each inquiry was investigated and handled informally without necessity of a special hearing.

Many communities in South Carolina are receiving natural gas service through facilities owned by municipalities or gas authorities

over which the Commission has no rate or service jurisdiction. However, the South Carolina Gas Safety Act of 1970 vested the Commission with pipeline safety jurisdiction over all gas system operators not subject to Federal Energy Regulatory Commission jurisdiction. Therefore, pipeline safety jurisdiction includes public utilities, municipalities, natural gas authorities, certain facilities operated by interstate companies, certain public housing authorities and others who purchase natural gas through a master meter for subsequent distribution to individual consumers. As of June 30, 1978, there were 43 such operators.

During calendar year 1977, representatives of the Commission made 414 inspections of natural gas systems to insure compliance with the South Carolina Gas Safety Act and the Minimum Federal Safety Standards for Natural Gas Pipelines. Eighty-six violations were found during these visits and, as of December 31, 1977, the Commission Staff verified compliance covering fifty-nine of these violations. The remaining violations necessitate continued monitoring to substantiate that they are corrected and brought into compliance with the Pipeline Safety Standards.

As indicated by the accompanying tables, the demand for natural gas in South Carolina has resulted in sales growth in recent years, but due to the present dwindling supplies, this growth is being adversely affected. Its characteristics as an efficient and pollution-free fuel have created a nationwide demand of such proportions that our existing domestic supply cannot meet the needs. Most gas utilities have been forced to curtail expansion of their residential, industrial, and commercial "firm gas" market. Some limitations have also been placed on segments of the industrial "interruptible gas" market.

All six private gas utilities are operating under the provisions of curtailment plans designated to allocate gas on the basis of priority of service established by such factors as efficiency of use, safety considerations, consumer reliance, and alternate fuel availability.

The dwindling supplies have forced the utilities to construct additional liquefied petroleum gas and liquefied natural gas peaking facilities to meet customer demands.

Agencies of the Federal Government and State Commission have taken actions designed to increase exploration for new gas reserves within the continental United States and offshore areas. In our State, three companies have been granted Commission approval to engage in exploration activities designed to increase the supply of gas to the company's system.

Two factors showing the pace of activity by natural gas utilities are the average number of customers and the gross plant investment. The growth in total customers served by each privately owned gas utility is shown by one of the accompanying tables. The total of natural gas customers grew from 211,321 in 1973 to 227,581 in 1977, for an increase of 7.7% over the five years.

One hearing for increase in rates was held during the fiscal year covered in this report. Rates were also adjusted in accordance with approved purchased gas adjustment and curtailment tracking adjustment clauses in the tariffs. These fluctuations resulted from changes in rates of interstate pipeline companies and curtailments of gas supplies. Some of these rate changes were retroactive decreases which resulted in refunds being passed to the customer through billing credits.

GAS OPERATIONS IN SOUTH CAROLINA, JUNE 30, 1978

Name of Utility	Localities Served	Managing Officer	Address
PRIVATELY OWNED PUBLIC UTILITIES			
Jurisdiction—Rates & Service —Pipeline Safety			
Carolina Pipeline Company, Inc. Transmission	Gas transmission lines from near Blacksburg to the Pee Dee section of South Carolina. Gas transmission lines serve Abbeville County and from Transcontinentals pipeline to Carlisle and tie lines from Aiken to Chappells, Carlisle to Chappells and Carlisle to Moore and Woodruff	John A. Warren, Pres.	Columbia, S. C.
Carolina Natural Gas Corp. Distribution	Abbeville, Bethune, Bishopville, Calhoun Falls, Camden, Conway, Cheraw, Dillon, Due West, Elgin, Jefferson, Johnsonville, Kingstree, Lake City, Lowndesville, Lugoff, Marion, Mayfield, McBee, Mullins, Myrtle Beach, Pageland, Pamplico, Pontiac, Society Hill, Zion	John A. Warren, Pres.	Columbia, S. C.
Peoples Natural Gas Co. of S. C. Distribution	Darlington, Florence, Hartsville, Sumter	Marion D. Lucas, Pres.	Florence, S. C.
Piedmont Natural Gas Co., Inc. Transmission	Gas transmission lines from connection with Transcontinental Gas Pipeline Company to city gates of Anderson, Greenville and Spartanburg		
Distribution	Anderson, Belton, Greenville, Honea Path, Inman, Iva, Mauldin, Simpsonville, Spartanburg, Starr, Travelers Rest, Woodruff	J. David Pickard, Pres.	Charlotte, N. C.

GAS OPERATIONS IN SOUTH CAROLINA, JUNE 30, 1978—Continued

Name of Utility	Localities	Managing Officer	Address
South Carolina Electric & Gas Co.			
Transmission	Gas transmission lines from near Aiken, to city gates of Charleston, Columbia, and from near Montmorenci to Allendale, Barnwell, Hampton, and Beaufort Counties.		
Distribution	Aiken, Allendale, Andrews, Barnwell, Batesburg, Bath, Beach Island, Beaufort, Blackville, Bowman, Brunson, Burnettetown, Burton, Cayce, Clearwater, Charleston, Columbia, Congaree, Denmark, Dentsville, Edgefield, Elko, Estill, Fairfax, Forest Acres, Gaston, Georgetown, Gloverville, Goose Creek, Graniteville, Hampton, Harleyville, Holly Hill, Irmo, Jackson, James Island, Jedburg, Johnston, Ladson, Langley, Leesville, Lexington, Lincolnville, New Ellenton, North Augusta, North Charleston, Parris Island, Perry, Pine Ridge, Port Royal, Ridgeland, Ridge Spring, Ridgeville, South Congaree, Salley, Saluda, St. George, Springdale, Steffeltown, Summerville, Swansea, Varnville, Wagener, Walterboro, Warrenville, West Ashley, West Columbia, Williston, Yemassee	Virgil C. Summer, President	Columbia, S. O.
United Cities Gas Company			
Distribution	Gaffney	John H. Maxheim, Pres.	Nashville, Tenn.
GAS AUTHORITIES			
Jurisdiction—Pipeline Safety			
Chester County Natural Gas Authority ..	Chester, Fort Lawn, Great Falls, Lando ..	R. E. Neal, Manager	Chester, S. O.
Clinton-Newberry Natural Gas Authority	Clinton, Liddi Mill, Joanna, Whitten Village, Jalapa, Newberry, Kinards	Bob Harris, Manager	Clinton, S. O.
Fort Mill Natural Gas Authority	Catechee, Central, Clemson, Easley, Liberty, Norris, Pelzer, Pendleton, Pickens, Seneca, Walhalla, Westminster, West Pelzer, West Union, Williamston .	Howard Mixon, Mgr.	Easley, S. O.

Lancaster County Natural Gas Authority	Lancaster, Heath Springs, Kerabaw	Troy Elmore, Mgr.	Lancaster, S. C.
York County Natural Gas Authority	Clover, Fort Mill, Rock Hill, York	C. K. Stafford, Mgr.	Rock Hill, S. C.
MUNICIPALITIES			
Jurisdiction—Pipeline Safety			
City of Bennettsville	Bennettsville	J. W. Douglas, Supt. of Gas Dept.	Bennettsville, S. C.
City of Blacksburg	Blacksburg	William Byars, Adm.	Blacksburg, S. C.
City of Orangeburg	Cordova, Orangeburg	Ted M. Johnson, Mgr. of Public Works .. Thomas Fairey, Supt. of Gas Dept.	Orangeburg, S. C.
City of Winnsboro	Winnsboro	Phillip Burnes, City Manager	Winnsboro, S. C.
City of Union	Buffalo, Jonesville, Pacolet, Union	Tom Sherbert, Director of Utilities ..	Union, S. C.
City of Bamberg	Bamberg & Cope Community	James Roberts, Supt. of Public Works .. V. L. Beechum, Supt. of Gas Dept.	Bamberg, S. C.
City of Greenwood	Greenwood, Donalds, Ninety Six, Ware Shoals	Hugh Edwards, Supt. of Gas Dept.	Greenwood, S. C.
City of Greer	Greer, Lyman, Duncan	Kenneth Smith, Mgr. of Public Works ..	Greer, S. C.
City of Fountain Inn.....	Fountain Inn	Jack Casey, Supt. of Gas Dept.	Fountain Inn, S. C.
City of Laurens	Laurens, Gray Court	Sam Wallace, Mgr. of Public Works .. Gerry Sheppard, Supt. of Gas Dept. ..	Laurens, S. C.
HOUSING AUTHORITIES			
Jurisdiction—Pipeline Safety			
Housing Authority of the City of Abbeville	Abbeville, Donalds, Due West, Lowndesville	J. Stuart Land, Executive Director	Abbeville, S. C.
Housing Authority of Aiken	Aiken	Ervin E. Koon, Executive Director	Aiken, S. C.
Housing Authority of Anderson	Anderson	Wm. R. Prater, Executive Director	Anderson, S. C.
Housing Authority of the City of Columbia	Columbia	William R. Ballou, Administrator	Columbia, S. C.
Housing Authority of Conway	Conway	Shaulter V. Allen, Executive Director ..	Conway, S. C.
Housing Authority of Darlington	Darlington	John M. Daniels, Executive Director ..	Florence, S. C.
Housing Authority of Fort Mill	Fort Mill	Louise M. Bonetti, Executive Director ..	Fort Mill, S. C.

GAS OPERATIONS IN SOUTH CAROLINA, JUNE 30, 1978—Continued

Name of Utility	Localities	Managing Officer	Address
Housing Authority of Gaffney	Gaffney	Joe H. Turner, Executive Director	Gaffney, S. C.
Housing Authority of Greenville	Greenville	John Dutton, Executive Director	Greenville, S. C.
Housing Authority of Lake City	Lake City	Ms. Winnie M. Keller, Exec. Director ..	Lake City, S. C.
Housing Authority of Laurens	Laurens	Ms. Katharine Dixon, Exec. Director ..	Laurens, S. C.
S. C. Regional Housing Authority No. 1	Belton, Blacksburg, Calhoun Falls, Central, Clover, Cowpens, Edgefield, Fort Mill, Fountain Inn, Heath Springs, Honea Path, Iva, Johnston, Jonesville, Laurens, Liberty, Ninety Six, Pacolet, Pendleton, Saluda, Seneca, Walhalla, Westminster, Williamston, York	William Porter, Assistant Director	Laurens, S. C.
S. C. Regional Housing Authority No. 3	Blackville, Denmark, Fairfax, Salley, Wagener, Williston	John M. Smith, Executive Director	Barnwell, S. C.
Housing Authority of Spartanburg	Spartanburg	Frank M. Gooch, Executive Director ..	Spartanburg, S. C.
Housing Authority of Union	Union	Fred A. Cogdell, Executive Director ..	Union, S. C.
Housing Authority of Woodruff	Woodruff	L. G. Casey, Executive Director	Woodruff, S. C.
Housing Authority of York	York	James Poore, Executive Director	Rock Hill, S. C.
MASTER METER SYSTEMS Jurisdiction—Pipeline Safety			
Blease Littlefield Trailer Park	Rock Hill	Blease Littlefield	Rock Hill, S. C.
Bridges Welding Co. and Trailer Park ...	Gaffney	Larry Bridges	Gaffney, S. C.
Carver Apartments	Myrtle Beach	H. W. Ragin, Manager	Myrtle Beach, S. C.
Charles Brothers Trailer Park	Rock Hill	Jim Charles	Rock Hill, S. C.
Cherry Hill Apts.	Conway	Franklin Dewitt, Attorney	Conway, S. C.

NATURAL GAS SERVICE TO RESIDENTIAL CUSTOMERS

Company — Year	Residential Customers	Residential Gas Sales, MCF	Average Use Per Customer, MCF
*Carolina Natural Gas Corporation (1)			
1977	12,473	1,188,306	95.3
1976	12,631	1,411,777	111.7
1975	12,905	966,559	74.9
1974	12,047	954,514	79.2
1973	11,861	982,213	86.5
Peoples Natural Gas Co. of S. C.			
1977	4,081	319,076	78.2
1976	4,079	273,489	67.0
1975	4,042	227,928	56.4
1974	4,038	221,710	54.9
1973	4,309	242,730	56.3
Piedmont Natural Gas Co., Inc.			
1977	39,600	3,647,458	92.1
1976	37,621	3,647,015	96.9
1975	38,543	3,221,919	83.6
1974	36,244	3,130,420	86.4
1973	34,855	3,500,582	100.4
S. C. Electric & Gas Co.			
1977	147,601	10,554,373	71.5
1976	147,146	10,972,514	74.6
1975	145,091	8,920,026	61.5
1974	143,152	8,830,791	61.6
1973	137,795	9,932,444	72.1
United Cities Gas Co.			
1977	3,402	310,253	91.2
1976	3,385	315,454	93.2
1975	3,333	275,377	82.6
1974	3,373	280,292	83.1
1973	3,137	289,365	92.2

* Figures based on Fiscal Year Ending March 31 of Following Year.

(1) Formerly Carolina Pipeline Company—Distribution.

CUSTOMERS SERVED BY NATURAL GAS UTILITIES

Company — Year	Residential	Commercial & Small Industrial	Large Industrial	Sales For Resale	Total Customers
*Carolina Natural Gas Corp. (1)					
1977	12,473	735	0	0	13,208
1976	12,631	532	0	0	13,163
1975	12,905	304	0	0	13,209
1974	12,047	370	0	0	12,417
1973	11,361	372	0	0	11,733
*Carolina Pipeline Co., Inc. (2)					
1977	0	0	113	12	125
1976	0	0	91	9	100
1975	0	0	118	9	127
1974	0	0	125	9	134
1973	0	0	119	9	128
Peoples Natural Gas Co.					
1977	4,081	1,124	34	0	5,239
1976	4,079	1,147	41	0	5,275
1975	4,043	1,144	44	0	5,230
1974	4,038	1,144	40	0	5,222
1973	4,039	1,235	39	0	5,683
Piedmont Natural Gas Co.					
1977	39,600	5,463	275	0	45,338
1976	37,621	5,325	248	0	43,194
1975	38,543	5,442	244	1	44,230
1974	38,244	5,355	240	1	41,840
1973	32,779	5,245	237	1	40,338
South Carolina Electric & Gas Co.					
1977	147,901	11,952	321	2	159,876
1976	147,146	12,057	306	2	159,511
1975	145,091	12,069	297	2	157,459
1974	143,152	12,232	298	2	155,684
1973	137,795	11,919	295	2	150,011
United Cities Gas Company					
1977	3,402	371	22	0	3,795
1976	3,385	383	22	0	3,790
1975	3,333	401	22	0	3,756
1974	3,373	359	21	0	3,753
1973	3,137	376	15	0	3,528

- * Figures based on Fiscal Year Ending March 31 of Following Year.
 (1) Formerly Carolina Pipeline Company—Distribution.
 (2) Formerly Carolina Pipeline Company—Transmission.

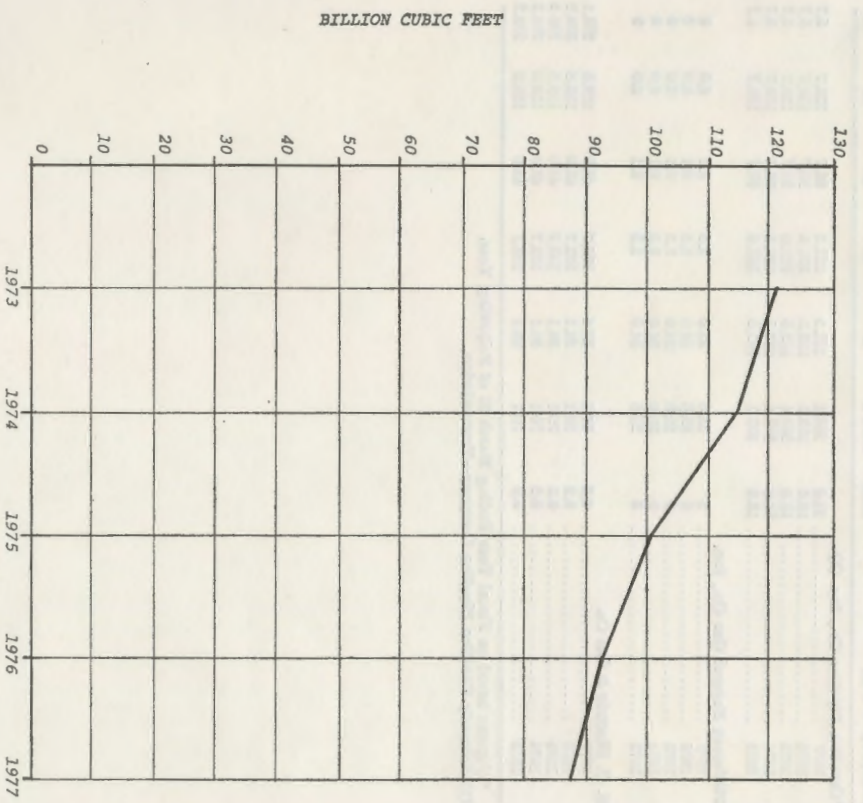
NATURAL GAS UTILITIES ANNUAL SALES

Total Sales in MCF

Company	1977	1976	1975	1974	1973
*Carolina Natural Gas Corporation (1) ..	2,611,384	2,545,318	1,653,205	1,633,663	2,179,514
*Carolina Pipeline Company, Inc. (2) ...	26,213,520	27,271,299	36,060,249	42,190,765	48,840,827
Peoples Natural Gas Co. of S. C.	1,842,058	2,053,874	2,105,131	2,300,591	1,940,952
Piedmont Natural Gas Company, Inc. ...	11,143,167	11,990,417	13,509,716	19,441,125	22,224,104
S. C. Electric & Gas Company	45,668,654	47,721,440	45,533,565	47,722,101	44,225,204
United Cities Gas Company	576,842	691,871	1,075,748	1,562,541	1,641,549

- * Figures based on Fiscal Year Ending March 31 of Following Year.
 (1) Formerly Carolina Pipeline Company—Distribution.
 (2) Formerly Carolina Pipeline Company—Transmission.

AMERICAN OVERSEAS ASIA JAPAN SO BILIN



JURISDICTIONAL NATURAL GAS SALES
1973 THROUGH 1977

MILES OF NATURAL GAS TRANSMISSION PIPELINES

Nominal Pipe Diameter

Company -- Year	2" or Less	2½" Thru 4"	6"	8"	10"	12"	16"
*Carolina Pipeline Co., Inc. (1)							
1977	18.6	203.1	152.5	321.6	90.7	130.7	5.7
1976	18.6	203.1	152.5	321.6	90.7	130.7	5.7
1975	18.6	203.1	152.5	321.6	90.7	130.7	5.7
1974	18.6	203.1	152.5	321.6	90.7	130.7	5.7
1973	18.6	203.1	152.5	321.6	90.7	130.7	5.7
Piedmont Natural Gas Co., Inc.							
1977	0	25.6	34.0	1.5	0.1	6.0	0
1976	0	25.6	34.0	1.5	0.1	6.0	0
1975	0	25.6	34.0	1.5	0.1	6.0	0
1974	0	25.6	34.0	1.5	0.1	6.0	0
1973	0	25.5	34.0	1.5	0.1	6.0	0
S. C. Electric & Gas Co.							
1977	0.2	76.1	37.4	132.7	43.9	119.8	200.1
1976	0.2	76.1	36.1	132.7	43.9	119.8	200.2
1975	0.2	76.1	36.1	132.7	43.9	119.8	200.2
1974	0.2	76.1	36.1	132.7	43.9	119.8	200.2
1973	0.3	76.1	36.1	132.7	43.9	119.8	200.2

* Figures based on Fiscal Year Ending March 31 of Following Year.

(1) Formerly Carolina Pipeline Company--Transmission.

WATER AND SEWERAGE DEPARTMENT

The majority of water and sewerage utilities operating in the State of South Carolina are owned and operated by municipalities and public water and sewer districts which are exempt, by state statute, from jurisdiction of the Public Service Commission. The City of Anderson is provided water service by a privately owned utility and therefore is regulated by the Public Service Commission.

Efforts to improve efficiency of each company has brought consolidation of many of the smaller companies. As of June 30, 1977, there are 225 water systems and 222 sewerage systems operating under 168 companies regulated by the South Carolina Public Service Commission.

There were 8 new water or sewerage utilities granted Certificates of Public Convenience and Necessity during the fiscal year and 3 water or sewerage utilities that were granted certificated areas under formally organized corporations.

More stringent demands by state and federal agencies, higher operating and maintenance costs, wages and supplies caused 11 water and sewerage companies, operating in this state, to apply to the Commission for authority to increase their rates and charges for water and sewerage service.

As prescribed by law and after proper advertisement, public hearings were held on each application for adjustments in water and sewerage rates and charges.

The problems of water and sewerage utilities continue to be problems for the Public Service Commission. The Public Service Commission received a substantial number of customer complaints during the fiscal year. These complaints fell into one of two categories, either service or billing; each complaint was investigated and settled informally, or if necessary, resolved through public hearings.

Prior to issuing a Certificate of Public Convenience and Necessity to a water or sewerage utility, the Commission, among other items, requires a performance bond in accordance with Section 58-5-720 of the 1976 Code of Laws of South Carolina as amended, complete cost and rate data, approval of adequate design, and supply potential, plat of proposed area to be served and copy of engineering plans and specifications.

SEWERAGE UTILITIES OPERATING IN SOUTH CAROLINA AS OF JUNE 30, 1978

Name of Utility	Service Area	Managing Officer/Addressee	Address
Alpine Utilities	Woodland Hills West No. 2, Woodland Hills No. 3, Mandel Park Subdivision, Bonnie Forest, Farmdale, Groves Subdivision, Sherwood Park, S. C. Education Association	J. Donald Dial, President	Columbia, S. C.
Aqua Company	Elm Village Subdivision	John Marcotzis	Summerville, S. C.
Archdale Utilities Corp.	Archdale Subdivision	E. Crosby Lewis, Attorney	Columbia, S. C.
Arlington Development Co.	Arlington Subdivision	Ralph L. Smith, Jr., President	Lugoff, S. C.
Artistic Builders, Inc.	Whispering Pines, Bent Tree Subdivision	Larry Gibson, President	Easley, S. C.
Ashley Utilities, Inc.	Ashley Forest Estates Subdivision	William S. Branton, President	Summerville, S. C.
Augusta Fields Utility System	Augusta Fields Subdivision	G. P. Callison	Greenwood, S. C.
Barbara Wiley, Individual, d/b/a Northfall Acres Wastewater System	Northfall Acres Subdivision	Barbara Wiley	Greenwood, S. C.
Bondale, Inc.	Bondale Subdivision	G. Ray Harris, President	Spartanburg, S. C.
Clyde G. Branham, Inc.	Lakewood Subdivision	Clyde G. Branham, President	Lugoff, S. C.
Briarcliffe Estates	Briarcliffe Estates Subdivision	Robert E. Staton, Attorney	Columbia, S. C.
Briarcreek Utilities	Briarcreek Subdivision	F. W. Sossamon, President	Gaffney, S. C.
Bush River Utilities, Inc.	Vicinity Dutch Square, Bush River Road	Neal MacGiehan, President	Greenville, S. C.
Business Brokers of the South	Mayfield Park Subdivision	Michael M. Rothberg	Columbia, S. C.
Carolina Water Service, Inc.	Laurel Meadows, Rollingwood, Harborside, Springhill, Oakcrest, Grayland Forest, Woodcastle, Glen Village II, Stonegate Subdivision, Okatee, Charles Towne, River Hills Plantation, Otranto, Green Oaks, Pocalla Village, Palmetto Apartments, Lincolnshire, White's Creek, Stratton Hall, Woodsen, Friarsgate, Greensprings, Meadowlake (Parcel F-1, Section A), Mandel Hall, Pocalla Heights, Belk, Oakland Plantation, Springlake, Teal on the Ashley, Roosevelt Gardens, Westchester Estates, Kings Grant, Pepperhill	Millard Shriver	West Columbia, S. C.
Clover Hill Water System	Clover Hill Subdivision	Richard Rulhe, Attorney	Anderson, S. C.
Citizens and Southern Mortgage Co.	Clear Springs Subdivision	Henry Turner	Columbia, S. C.
Colonial Realty and Construction Co.	Lakeview Manor Subdivision	J. E. Gremillion, President	Spartanburg, S. C.
Commodore Utility Corporation	Hilton Head Plantation	J. Roy Martin, III	Clover, S. C.

Commonwealth Utility Co., Inc.	Cabin Creek Subdivision	Preston Callison, Attorney	Columbia, S. C.
Community Sewerage System	Oakcrest & Hollywood Manor Subdivisions	Raymond K. Knight, Jr.	Charleston, S. C.
Consolidated Utilities, Inc.	Bendemeer Subdivision	Tom Jenkins, President	Columbia, S. C.
Club Water Company, Inc.	Berkeley Country Club Estates	James Preacher	Charleston, S. C.
Country Club Sewer, Inc.	Country Club Heights	Steve Melton, President	Lancaster, S. C.
DeBordieu Colony Club, Inc.	DeBordieu Colony Subdivision	Wallace F. Pate	Georgetown, S. C.
Delta Investment Company, Inc.	Dunston Hills and North Pines Subdivisions	Earle W. Kirkwood, President	Columbia, S. C.
Delta Water Company	Stratton Capers, Belmont, Tranquil Acres, Mobile Home Estates	James Preacher	Charleston, S. C.
Development Service, Inc.	Dutchbrook Subdivision and vicinity of Dutch Square	L. Arlen Cotter, President	Columbia, S. C.
Dunmovin Utilities, Inc.	Dunmovin Subdivision, Island Estates Subdivision, Orleans Woods, Farming- ton, Whitehouse Plantation, Landsdown, Cedar Springs	James Preacher	Charleston, S. C.
Edenwood Water Company, Inc.	Edenwood Subdivision	William C. Hawley	Columbia, S. C.
Farrow Terrace Utility Company	Farrow Terrace, Greenview, Highland For- est Subdivision	M. B. Swindler, Owner	Columbia, S. C.
Fort Lawn Development Company	Baker Place Subdivision	Mr. Eugene W. Melton, President	Fort Lawn, S. C.
Foxwood Utilities, Inc.	Foxwood Subdivision	Michael Hill, General Manager	Fort Mill, S. C.
Fripp Island Development Corp.	Fripp Island Development	L. E. Terrell, III, Director of Operations	Fripp Island, S. C.
General Utilities, Inc.	Washington Park and Lloydwood Subdivisions	W. E. Sellars, President	Columbia, S. C.
G & K, a Partnership	Sedgefield Subdivision Extension	Joseph Griffith, Partner	Charleston, S. C.
Glendale Water Corporation	Tara Village and Park City Subdivisions	H. F. Grantham, Jr., President	Florence, S. C.
Gordon Farms, Inc.	Hillbrook Forest Subdivision	John F. Dunbar, Vice President	Spartanburg, S. C.
Greenhurst Utility Co., Inc.	Greenhurst Subdivision	J. W. Miles, President	Charleston, S. C.
Greystone Utility Corporation	Riverland Development Subdivision	E. Crosby Lewis	Columbia, S. C.
Heater Utilities, Inc.	Dutch Village, Lincolnshire, Raintree Acres, Washington Heights, Vanarsdale, Bellemede, Parkwood, Royal Hills, Westgate, Arborgate, Northwood Estates, Windy Hill, Charwood	Percy McNeill	Columbia, S. C.
Highland Forest, Inc. d/b/a Highland Forest Wastewater System	Highland Forest Subdivision	Calhoun A. Mays, III	Greenwood, S. C.
Holly Utilities	Ashcroft Hall Subdivision	I. M. Goldberg, Attorney	Charleston, S. C.
Isle of Palms Water Company	Forest Trail Subdivision, Isle of Palms	Charles S. Way, President	Isle of Palms, S. C.
Jackson Mills	Jackson Mills Village	Homer Elmore, Vice President	Wellford, S. C.
James Island Plantation Service	Lawton Bluff Subdivision	Thomas L. Read, Manager	Charleston, S. C.
Kiawah Island Utilities, Inc.	Kiawah Island	Gary G. Pyles	Atlanta, Georgia
Ladson Utilities, Inc.	College Park Subdivision	Gordon Darby	Charleston, S. C.

SEWERAGE UTILITIES OPERATING IN SOUTH CAROLINA AS OF JUNE 30, 1978—Continued

Name of Utility	Service Area	Managing Officer/Addresses	Address
Leesburg Utilities, Inc.	Yorkshire Extension Subdivision	Charles Kiser, President	Columbia, S. C.
Leon D. Todd, d/b/a Pine Valley Estates Utility	Pine Valley Estates Subdivision	Leon D. Todd, Jr.	Conway, S. C.
Litchfield Plantation Public Service Company	Litchfield Plantation Subdivision	Al Mozley	Georgetown, S. C.
Litchfield Utility Company	Inlet Point, Salt Marsh Cove, Litchfield Retreat, Litchfield Golf Company	Douglas L. Hinds, Attorney	Georgetown, S. C.
Litco, Inc.	Leawood Subdivision	William J. Lawrence, Vice President	Sumter, S. C.
Lockhart Power Company	Monarch and Ottaray Village	W. F. Tribble	Lockhart, S. C.
Locksley Hall, Inc.	Locksley Hall Subdivision	Joseph M. McClellan	Greenwood, S. C.
Lost Wilderness, Inc.	Lost Wilderness Subdivision	Gene C. White, President	Lavonia, Georgia
Lynwood Utility, Inc.	Lynwood Subdivision	Harold Simmons, President	Charleston, S. C.
Major Homes, Inc.	Meadow Park Subdivision	John Holman, President	Anderson, S. C.
Marina Colony, Inc.	Marina Colony near Murrell's Inlet	William Hagan	Johnsonville, S. C.
Martha Law Utilities, Inc.	Quail Creek Subdivision	J. T. McAlister, President	Columbia, S. C.
Meadowbrook Water Works, Inc.	Meadowbrook Subdivision	R. D. Ferguson	Spartanburg, S. C.
Mountain Bay Estates Utility Co., Inc. ..	Mountain Bay Estates	Larry Estridge	Atlanta, Georgia
Mt. Gilead Realty Company	Mt. Gilead Subdivision	W. B. Norwood, President	Murrells Inlet, S. C.
National Holding Company	Farrow Hills Subdivision	J. T. Swindler	Columbia, S. C.
North Brookdale Sewerage Co.	North Brookdale Subdivision	Fred R. Fanning, Attorney	Orangeburg, S. C.
North Pimlico Corporation	Pimlico Subdivision	Alton H. Parks, Acting Agent	Charleston, S. C.
North Pines Utility Company, Inc.	Stonegate Subdivision	Millard Shriver	West Columbia, S. C.
Northsprings, Inc.	Northsprings Subdivision	Edwin H. Cooper, Jr., Attorney	Columbia, S. C.
Frank M. Nutt	Brookside Village Mobile Home Subdivision	Frank M. Nutt	Moore, S. C.
Oak Grove Estates Utilities, Inc.	Oak Grove Estates Subdivision	S. V. Oxner, Owner	Lexington, S. C.
Old Barnwell Road Utility Company, Inc.	Land of Lakes, Southgate Subdivision	Albert E. Sturkie	Columbia, S. C.
Ray F. Patton, d/b/a PPR&M Environmental Systems Company	Canterbury and The Village Subdivisions, Idlewood, River Forest	Ray Patton, President	Greenville, S. C.
Piedmont Development of Greenwood	Willows Subdivision	W. H. Dyer, President	Greenwood, S. C.
Pilot Corporation	Rivermont West	Walter Keenan	Columbia, S. C.
Pine Forest Utilities, Inc.	Pine Forest Subdivision	Cecil A. Riley, President	Columbia, S. C.
Pinedale Utility Company	Pinedale, Ashley Creek Village, and Guignard Park Subdivisions	Dan Trotter, President	Sumter, S. C.
Platt Water Company, Inc.	Deerfield Plantation Subdivision	W. F. Platt, Jr.	Surfside Beach, S. C.
Quail Arbor Estates Corp.	Quail Arbor Estates	Edward A. Knight, President	Summerville, S. C.
Quail Hollow Company	Quail Hollow Subdivision	William F. Austin, Attorney	Columbia, S. C.
Queensboro Sewerage Corp.	Queensboro Subdivision	Joseph P. Griffith, President	Charleston, S. C.
R.A.E. Associates, Inc.	Eastwood Acres Subdivision	Frederick L. Evan, General Manager ..	Orangeburg, S. C.
Regency Utilities, Inc.	Dorchester Regency Subdivision	Arnold Goodstein, Attorney	Charleston, S. C.
Ribaut Insurance Agency	Cherry Hill Estates Subdivision	Barry L. Johnson, Attorney	Beaufort, S. C.

Rice Corporation	Look-Up-Forest Subdivision	Max M. Rice	Travelers Rest, S. C.
Rock Springs Development Corp.	Rock Springs Development Subdivision ..	Ralph L. Smith, Jr.	Lugoff, S. C.
Rowland and Lynch	Linville Subdivision	Raymond C. Eubanks, Attorney	Spartanburg, S. C.
Seabrook Utilities Corp.	Seabrook Island Development	Richard T. Collier, President	Johns Island, S. C.
Shelley Enterprises, Inc.	Shelley Acres Subdivision	William I. Shelley	Myrtle Beach, S. C.
St. James Utility, Inc.	St. James Estates Subdivision	Arnold Goodstein, Attorney	Charleston, S. C.
Smokerise Utilities, Inc.	Smokerise Subdivision	J. W. Keistler, Jr.	Rock Hill, S. C.
S. C. Utilities, Inc.	Gem Lakes Estates Subdivision	Hugo S. Sims, III	Orangeburg, S. C.
Southeastern Real Estate Factors, Inc. ...	Star Cliffe Estates Subdivision	George H. Hamrick, Jr., President	Lancaster, S. C.
Springfield Utility Company	Springfield No. 6 Subdivision, Willowoods and Ferndale Subdivision	Jim Smith, President	Spartanburg, S. C.
Storm Branch Sewers, Inc.	Belvedere Ridge Subdivision, Shady Ridge, Bradley Terrace, Pinecrest	William A. Trotter, President	Augusta, Georgia
Sunnyhill, Inc.	Sunnyhill Subdivision	Sheddie Tetterton	Camden, S. C.
Sunset Lagoon, Inc.	Stratton Hall Subdivision	Augustus R. Graydon, Attorney	Columbia, S. C.
Tall Pines Utilities, Inc.	Tall Pines Plantation	Charles I. Goldberg, Attorney	Charleston, S. C.
Tega Cay Utilities, Inc.	Tega Cay Subdivision	Lee McClurkin, Jr., President	
Terraceway Service Company, Inc.	Candlewood Parcel A, Prescott Terrace, North 21 Terrace, North 21 Section "E", Meadowlake, Star-Lite, Crane Creek, Meadowlake—Sections "C-1", "D", and "E" Candlewood		Fort Lawn, S. C.
Tranquil Utilities, Inc.	Tranquil Acres Subdivision	E. D. Sauls, President	Columbia, S. C.
Trolley Enterprises	Millwood, Rose Hill Extension and Wood- lawn Subdivisions	Walter Wilkens	Ladson, S. C.
Trollingwood Water and Sewer Utilities ..	Trollingwood Subdivision	Edward A. Riley, Secretary	Summerville, S. C.
Twin Lakes of Sumter, Inc.	Twin Lakes of Sumter Subdivision	Michael B. Hall, Planning Coordinator ..	Greenville, S. C.
Utilities, Inc. (Bagnal Bldrs.)	Charles Towne Subdivision	Arthur L. Harper	Sumter, S. C.
Utilities Services, Inc.	Edinburg Subdivision	M. R. Bagnal, Jr., Manager	Columbia, S. C.
Valhalla Company	Valhalla Subdivision	Preston Callison, Attorney	Columbia, S. C.
Village Utilities, Inc.	Madera Subdivision, Westgate and Madera Apartments	Robert R. Russell	Columbia, S. C.
W. M. Harvey Investment Properties, Inc.	Oakmont Subdivision	T. G. Daniel, Jr., President	Spartanburg, S. C.
Water Distributors, Inc.	Belvedere Terrace	W. M. Harvey, President	Orangeburg, S. C.
Water Oak Utility Company, Inc.	Moss Creek Plantation	Robert H. Harria, Vice President	Belvedere, S. C.
Wedgfield Plantation Public Service Company	Wedgfield Subdivision	William A. Ruth, Attorney	Beaufort, S. C.
Westoe Plantation Land Development Company	Sprucewood Subdivision	Douglas L. Hinds, Attorney	Georgetown, S. C.
White Church Company, Inc.	White Church Place Subdivision	Granville S. Way, Jr.	Summerville, S. C.
Wikoff Utilities Corp.	Wikoff Development Subdivision	Andy Combs	Summerville, S. C.
Wildewood Utilities, Inc.	Wildewood Subdivision	Phillip L. Lambert, Treasurer	Fort Mill, S. C.
William A. James Realty Company, Inc. ...	Ramsey Acres Subdivision	C. Heath Manning, President	Columbia, S. C.
Woodlands Utilities, Inc.	Woodland Hills Subdivision, Woodland Village Apartments, New South Square Apartments, Seven Oaks Elementary School, St. Andrews Union 76 Service Station	William A. James	Myrtle Beach, S. C.
Woodside-Woodview Utility Company ...	Woodside-Woodview Manor	J. D. Dial, Attorney	Columbia, S. C.
		Laurence O. Stoney, Attorney	Charleston, S. C.

33

WATER UTILITIES OPERATING IN SOUTH CAROLINA AS OF JUNE 30, 1978

Name of Utility	Service Area	Managing Officer/Addressee	Address
A. D. Hare, d/b/a A. D. Hare Water Works	Huntington Place Subdivision and Pinopolis	A. D. Hare, Owner	Pinopolis, S. C.
Aqua Company	Elm Village Subdivision	John Marcotsis, Owner	Summerville, S. C.
Augusta Fields Utility System	Augusta Fields Subdivision	H. D. Bushardt, President	Greenwood, S. C.
Big Rock Water Company	Big Rock Subdivision	George F. Rownes, Attorney	Greenville, S. C.
Bobby Joe Solesbee, d/b/a Bobby Joe Solesbee Utility Company	Hill Acres Subdivision	Bobby Joe Solesbee	Spartanburg, S. C.
Eugene F. Bobo Well Drilling Company ..	Rockview Heights, Centerville Terrace Properties, Cloverdale, Englewood, Lake Crest, Avondale, Woodhaven Estates, Forest Park, Chateau Acres	Eugene F. Bobo, Owner	Anderson, S. C.
Bon Aire Development Water Company ..	Bon Aire Subdivision	Joe H. Bonds, Owner	Clinton, S. C.
Brookgreen Water Company	Brookgreen North Subdivision	D. O. Jackson	Florence, S. C.
Carolina Water Service, Inc.	Laurel Meadows, Rollingwood, Harborside, Springhill, Oakcrest, Grayland Forest, Woodcastle, Glen Village II, Green Oaks, Meadowlake Hills, Pocalla Village, Caro- lina Estates, Falcon Ranches, Sycamore Acres, Westside Terrace, Oakwood, Tif- ton, Botany Acres, Carolina Acres, Grove Park, Plantation Place, Westchester, Arrowood, Blue Ridge Terrace, Indian Pines, Idlewood, Heatherwood, Briar- cliffe, Garden City Area, Wrenwood, Jamestowne Development, Spring Lake, Teal on the Ashley, Carolina Estates, River Hills Plantation	Millard Shriver	West Columbia, S. C.
Cherry Hill Subdivision Water System ...	Cherry Hill Subdivision	F. L. Burnett, Jr., President	Ninety Six, S. C.
Chinquapin Properties, Inc.	Subdivision No. 1	Marion H. Davis, Manager	Greenwood, S. C.
Clarke Estates Water System	Clarke Estates Subdivision	James Parker	Gainesville, Georgia
Clinton Cotton Mills	Clinton Cotton Mill and Lydia Mill	George H. Cornelson, V. P.	Clinton, S. C.
Clover Hill Water System	Clover Hill Subdivision	Coy Miller, Jr.	Anderson, S. C.
Club Water Company, Inc.	Berkeley Country Club Estates	Dal H. Felkel	Florence, S. C.
Commodore Utility Corporation	Point South Subdivision, Hilton Head Plantation	J. Roy Martin, III	Olover, S. C.
Commonwealth Utility Co., Inc.	Cabin Creek Subdivision	Preston H. Callison, Attorney	Columbia, S. C.

Community Water System	Hollywood Manor	Raymond A. Knight, Jr.	Charleston, S. C.
Crest Water Company, Inc.	Wintercrest Subdivision	Melvin B. McKeown, Jr.	York, S. C.
DeBordieu Colony Club, Inc.	DeBordieu Colony Subdivision ..	Wallace F. Pate	Georgetown, S. C.
Delta Water Company	Mobile Homes Estates, Pinehill Acres, Stratton Capers, Belmont, Tranquill Acres, University Park		
Dinkins Water Development Co.	Dinkins Development	Dal H. Felkel	Florence, S. C.
Duke Power Company	Anderson, vicinity of Clemson and Pendleton, S. C.	J. A. Dinkins, Manager	Sumter, S. C.
Dunmovin Utilities, Inc.	Dunmovin Subdivision, Island Estates Sub- division, Orleans Woods, Cedar Springs	Carl Horn, President	Charlotte, N. C.
Edenwood Water Company	Edenwood Subdivision	Dal H. Felkel	Florence, S. C.
Fairlawn Utilities, Inc.	Fairlawn Subdivision	William C. Hawley	West Columbia, S. C.
Fork Shoals Water Works	Fork Shoals Village	Peggy C. Sox	Lexington, S. C.
Foxwood Utilities Inc.	Foxwood Subdivision	J. E. Haller, Assistant Treasurer ..	Ware Shoals, S. C.
General Utilities	Grustark, Albene Park, Lloydwood Subdivisions	Michael Hill, General Manager	Fort Mill, S. C.
Glendale Water Corporation	Tara Village, Park City Mobile Home Park, Greenwood Subdivision	Preston H. Callison, Attorney	Columbia, S. C.
GMK Development Corporation	Green Pond Estates	H. F. Grantham, Jr.	Florence, S. C.
Gnato's Utility	Gnato's Acres Subdivision	Oliver S. Melton	Port Royal, S. C.
Hallmark Shores Water Systems	Hallmark Shores Subdivision	F. H. Waden	High Point, N. C.
Heater Utilities, Inc.	Springfield Acres, Dutch Village, Lincoln- shire, Farrowood, Raintree Acres, Wash- ington Heights, Charleswood, Vanars- dale, Bellemede, Parkwood, Royal Hills, Ballentine Acres, Harmon Estates, South Congaree, Murray Park, Murray Lodge, Dutchman Shores, Indian Cove, Tanya Terrace, Emma Terrace, Lake Village, Glen Village, Dublin Village, Melmont Shores, Dutchman Acres, Arrowhead Shores, Charwood, Lexington Estates, Oakland Plantation, Tanglewood, Fox- trail Subdivision, Windy Hill, Sangaree, Pioneer Shores, Arrowwood, Oakridge Hunt Club, Lakewood Estates	Lucius O. Porth	Lexington, S. C.
Hermitage Utility Company	The Hermitage Subdivision	Percy McNeil	Columbia, S. C.
Hermitage Water Systems of Lexington, Inc.	The Hermitage Subdivision, Lexington County	B. M. Thompson, Jr., Attorney	Hilton Head Island, S. C.
Hilton Head Water Company	Blue Heron Point, Bram's Point, Spanish Wells, Mariner's Cove, Burke's Beach ..	Robert D. Hendrix	Lexington, S. C.
		Joe Y. Pitts, President	Hilton Head Island, S. C.

WATER UTILITIES OPERATING IN SOUTH CAROLINA AS OF JUNE 30, 1978—Continued

Name of Utility	Service Area	Managing Officer/Addressee	Address
Holly Utilities Company	Ashcroft Hall Subdivision	Delbert Goforth, Manager	Charleston, S. C.
Horse Island Service Corporation	Horse Island and Vue Point Subdivision ..	G. H. O'Kelley	Hilton Head Island, S. O.
Hughes Well Drilling & Pump Co.	Middleton Shores, Hill & Dale, Sherwood Forest, Clearview Heights, Green Forest, Fieldcrest Acres, Beigewater, Suriside Heights, Lakewood, Town Creek Acres, Edgebrook, Haynie Builders, Lakeland, Normandy Park, Rice Enterprises Sub- division, Dobbins Estates, Hidden Lake, Nevitt Forest, Oakwood		
Hyde Park Water Company	Hyde Park Subdivision	B. M. Hughes, Owner	Anderson, S. O.
Island Water Company	Rollingwoods Acres Subdivision	John S. Coleman, Manager	Greenwood, S. O.
Isle of Palms Water Company	Forest Trail Subdivision, Isle of Palms ..	W. W. Eller, President	Ladson, S. O.
J. C. Cloniger, d/b/a Springlake Estates Water System	Spring Lake Subdivision	Charles S. Way, President	Isle of Palms, S. O.
J. D. Nicholson Water Company	Located in the city limits of Greenwood, South Carolina	J. C. Cloniger, Owner	York, S. O.
Charles Kellett & Son, Inc.	Woodlawn Park Subdivision	J. D. Nicholson, Owner	Greenwood, S. O.
Kiawah Island Utilities, Inc.	Kiawah Island	Charles Kellett	Greenville, S. O.
Lake Marion Shores	Oliver Subdivision	Gary G. Pyles	Atlanta, Georgia
Lake Murray Utilities, Inc.	Murray Hill Estates, Harrisburg Sub- division	Howard Oliver, Owner	Summerton, S. O.
Lake Murray Water Corporation	Watergate Subdivision	Willie L. Sox, President	Lexington, S. O.
Litchfield Plantation Public Service Co.	Litchfield Plantation Subdivision	Millard Shirver	W. Columbia, S. O.
Lockhart Power Company	Lockhart and Monarch Villages	Al Mozley	Georgetown, S. O.
Lofton A. Ivey Water Company	Barber Street Subdivision	W. F. Tribble, Assistant Treasurer ..	Lockhart, S. O.
Lost Wilderness, Inc.	Lost Wilderness Subdivision	Lofton A. Ivey	Union, S. O.
Marina Colony, Inc.	Marina Colony near Murrells Inlet	Gene O. White, President	Lavonia, Georgia
Mark Water Works, Inc.	Gray's Hill Subdivision	William Hagan	Johnsonville, S. O.
McCombs Water System	McCombs Subdivision	Ernest G. Mark, President	Beaufort, S. O.
Meadowbrook Water Works, Inc.	Meadowbrook Subdivision and Hollings Marina Subdivision	Herbert R. Anderson	Greenwood, S. O.
Mountain Bay Estates Utility Co., Inc. ..	Mountain Bay Estates	R. D. Ferguson	Spartanburg, S. O.
Mt. Gilead Realty Company	Mt. Gilead Subdivision	Larry Estridge	Atlanta, Georgia
North Pines Utility Company, Inc.	Stonegate Subdivision	W. B. Norwood	Murrells Inlet, S. O.
Oak Grove Estates Utilities	Oak Grove Estates Subdivision	Millard Shirver	W. Columbia, S. O.
Old Barnwell Road Utility Co., Inc.	Land of Lakes, Southgate Subdivision ..	S. V. Oxner, Owner	Lexington, S. O.
		Albert E. Sturkie	Columbia, S. O.

Roy A. Owen Water System	Adjacent to Greenwood	Roy A. Owen, Owner	Greenwood, S. C.
Palmetto Utilities Corporation	Oakdale Subdivision and Country Club of South Carolina	Billy F. Burnett, Vice President	Florence, S. C.
Peachtree Water Company, Inc.	Peachtree Acres	John Hydrick, Attorney	W. Columbia, S. C.
The Peoples Agency	Partridge Woods	Henry V. Boyce, Manager	Beaufort, S. C.
Pinedale Tility Company	Guignard Park, Ashley Creek and Pinedale Subdivisions	Dan Trotter, President	Sumter, S. C.
Platt Water Company	Lakewood Plantation, Deerfield Plantation	V. F. Platt, Jr.	Surfside Beach, S. C.
Providence Water System	Harris Subdivision	Mrs. A. M. Harris	Dalzell, S. C.
Pumpkin Center Water Works	Pumpkin Center	R. E. Coleman, Manager	Facolet, S. C.
R. W. Norman, d/b/a Warren Norman and Company	Riverview Subdivision	R. W. Norman	Rock Hill, S. C.
Regency Utilities, Inc.	Dorchester Regency Subdivision	Arnold Goodstein, Attorney	Dorchester, S. C.
Reynolds Water Works, Inc.	Clifton Community	Shirley H. Reynolds	Clifton, S. C.
Rice Corporation	Look-Up-Forest Subdivision	Max M. Rice	Travelers Rest, S. C.
Rock Bluff Utilities, Inc.	Rock Bluff Subdivision	Roscoe M. Hinson, President	Kingstree, S. C.
Seabrook Utilities Corporation	Seabrook Island Development	Richard T. Collier, President	Johns Island, S. C.
Southland Utilities, Inc.	Creekwood and Cedarwood Subdivisions ..	Herman Hickman	Lexington, S. C.
Stephenson Investment Company, Inc. ...	Stephenson Lakes Subdivision	H. P. Stephenson	Columbia, S. C.
Taylor Waterworks, Inc.	Pine Forest, Pecan Grove Subdivision	James Taylor, Owner	Ridgeland, S. C.
Tega Cay Utilities, Inc.	Tega Cay Subdivision	Lee McClurkin, Jr., President	Ft. Lawn, S. C.
Tranquil Utilities	Tranquil Acres Subdivision	Walter Wilkins	Ladson, S. C.
Trollingwood Water and Sewerage Utilities	Trollingwood Subdivision	Michael B. Hall, Planning Coordinator .	Greenville, S. C.
Village Utilities, Inc.	Madera Subdivision, Westgate Apartments, Madera Apartments	T. G. Daniel, Jr.	Spartanburg, S. C.
Water Oak Utility Company	Moss Creek Plantation	William A. Ruth, Attorney	Beaufort, S. C.
Water Distributors, Inc.	Belvedere Ridge Subdivision, Bradley Terrace Subdivision, and Bradleyville area	Robert Harris, Manager	Belvedere, S. C.
Westoe Plantation Land Development Company	Sprucewood Subdivision	Granville, S. Way, Jr.	Summerville, S. C.
Westover Water Company	Westover Subdivision	P. O. Partridge, Jr., Owner	Greenwood, S. C.
West Side Water Company	Hill Dale Subdivision	Robert F. Burgess, President	Sumter, S. C.
Wikoff Utilities Corporation	Wikoff Development Subdivision	Phillip L. Lambert, Treasurer	Fort Mill, S. C.
Woodlawn Water Company	Woodlawn Subdivision	W. Clayton Thompson	Greenwood, S. C.

TELEPHONE AND TELEGRAPH DEPARTMENT

The Telephone and Telegraph Department of the Utilities Division is responsible for the work necessary in the regulation of rates and services pertaining to 30 telephone utilities, one telegraph utility, as well as 15 radio common carrier companies. The Staff of this Department investigates, and makes every effort to resolve all complaints involving rates and service, territorial disputes and requests for boundary changes.

Field Inspections of telephone plant in use and under construction are made. When construction is completed, tests and other observations are made to determine the quality and adequacy of service. The Staff also maintains an updated file on all tariffs, territorial maps, and other pertinent data. The exhibits and materials submitted with rate applications are thoroughly reviewed before being introduced at a hearing.

During the fiscal year, the Telephone and Telegraph Department processed in excess of 990 complaints. The telephone subscribers of today expect better service without delays, failures, or inaccurate billing. Due to these and other reasons, the Staff of the Telephone and Telegraph Department performed tests in sixty-two (62) central offices during the year to determine the condition of the equipment and grade of service being rendered. These tests, performed by Engineers from this Department, are made to insure that the Commission's minimum service standards are being met.

During the past year most telephone utilities, continued to make large investments to improve their outside plant, central office, and toll equipment in an endeavor to cope with the ever expanding telephone industry.

The Commission held 17 formal hearings involving telephone, radio common carrier, territory, and merger matters during the year and all interested parties were given an opportunity to be heard. A decision was rendered on all 17 hearings. In addition, approximately 880 tariff filings covering new service or change in language were reviewed by the Staff and approved by the Commission without formal hearings.

We are showing below some of the more notable Telephone Utility accomplishments which occurred during the period of July 1, 1977, through June 30, 1978.

Southern Bell Telephone and Telegraph Company started or completed the following:

Belton growth building addition completed.

Easley growth building addition completed.

Mt. Pleasant new ESS building completed.

Aiken 3CL Switchboard discontinued—Traffic rehomed to the Columbia Base TSPS.

Greenville-Woodruff Road growth building addition completed.

Construction started on a building addition to house the new Anderson Main No. 1A ESS which will replace the existing SXS.

The building addition which will house the Darlington No. 2B ESS was completed.

Initial TSPS placed into service in Greenville to serve the Greenville, Anderson, and Spartanburg Toll Center Areas.

Charleston-James Island growth building addition completed.

Construction completed on the Latta new ESS building that will house the No. 3 ESS which will replace the existing CDO.

Construction completed on the York building addition that will house the No. 2B ESS which will replace the existing CDO.

Construction started on the Anderson-Townville building addition that will house the No. 3 ESS which will replace the existing SF-1 crossbar.

Installation started on the York No. 2B ESS which will replace the existing CDO.

Installation started on the Latta No. 3 ESS which will replace the existing CDO.

The Charleston Dial & Toll No. 1 ESS was placed in service.

The Isle of Palms-Sullivan's Island No. 2B ESS was placed in service.

Installation started on the Springfield-Salley No. 3 ESS which will replace the existing XY office.

The Mt. Pleasant No. 2B ESS was placed in service.

GROWTH OF TELEPHONE UTILITIES IN SOUTH CAROLINA

Year	Gross Operating Revenue (Millions of Dollars)	Gross Plant Investment (Millions of Dollars)	Total No. of Telephones (Thousands)
1966	83.1	394.4**	850.3
1967	90.5	446.1**	900.7
1968	102.6	500.1**	982.6
1969	117.7	561.8**	1072.0
1970	134.8	634.3**	924.6
1971	194.6	683.3**	1139.3
1972	168.4*	807.1***	1250.6
1973	182.9*	934.4***	1370.8
1974	213.9*	1086.6***	1451.9
1975	340.8	1053.2***	1529.2
1976	399.5	1304.5***	1600.9
1977	449.7	1451.6***	1710.2

* Includes only South Carolina portion of TOLL REVENUE.

** Includes Plant in Service, held for future use.

*** Includes Plant in Service and under construction.

TELEPHONE UTILITIES OPERATING IN SOUTH CAROLINA, JUNE 30, 1978

Name of Company	Exchanges	Managing Officer/Addressee	Address
Bluffton Telephone & Appliance Co., Inc.	Bluffton, S. C.	John D. Cantrell, V-Pres.	Bluffton, S. C.
Chesnee Telephone Company	Chesnee, S. C.	Mrs. H. W. Askins, Pres.	Chesnee, S. C.
Chester Telephone Company	Chester, Great Falls, Lewisville, S. C.	J. M. McElwee, Pres.	Chester, S. C.
Continental Telephone Co. of S. C.	Bowman, Elloree, Jackson, Santee, Simpsonville, S. C.	C. K. Rice, Pres.	Simpsonville, S. C.
Farmers Telephone Copp, Inc.	Bishopville Rural, Greeleyville, Lane, Lynchburg, Mayesville, N. Kingtree, N. Manning, N. Summerton, N. Sumter, Pinewood, Scranton, Statesburg, Turbeville, W. Andrews, S. C.	Aubrey Judy, Mgr.	Kingtree, S. C.
Fort Mill Telephone Co.	Fort Mill, S. C.	F. S. Barnes, Pres.	Rock Hill, S. C.
General Telephone Co. of the SE	Abbeville, Andrews, Bishopville, Calhoun Falls, Conway, Ehrhardt, Fairfax, Georgetown, Hemingway, Hollywood, Johnsonville, Kingtree, Lake City, Lamar, Laurens, McCormick, Manning, Myrtle Beach, Ocean Drive, Olanta, Olar, Pamplico, Pawleys Island, Shawview Heights, N. Myrtle Beach, Summerton, Sumter, Surfside, Walterboro, Woodruff, Winnsboro, Yemassee, S. C.	C. R. Tarrant, V-Pres. & Gen. Mgr.	Sumter, S. C.
Hargray Telephone Company, Inc.	Hardeville, Hilton Head Island, S. C.	Tony Capici, Mgr.	Hilton Head, S. C.
Heath Springs Telephone Co.	Heath Springs, S. C.	W. H. Bridges, Pres.	Heath Springs, S. C.
Home Telephone Company, Inc.	Moncks Corner, Harleyville, Jamestown, Lebanon, Cross, S. C.	Robert L. Helmly, Pres.	Moncks Corner, S. C.
Horry Telephone Coop., Inc.	Aynor, Horry, Floyds, Loris, Murrells Inlet, Red Hill, Lakewood, S. C.	R. E. Jamison, Mgr.	Conway, S. C.
Lancaster Telephone Co.	Lancaster, S. C.	Gene T. Whitlock, Opr. Mgr.	Lancaster, S. C.
Lockhart Telephone Exchange	Lockhart, S. C.	W. F. Tribble, Gen. Mgr.	Lockhart, S. C.
McClellanville Telephone Co., Inc.	McClellanville, S. C.	Gary Torbett, Mgr.	McClellanville, S. C.
Mid-Carolina Telephone Co.	Landrum, Campobello	R. O. Trainor, Mgr.	Tryon, N. C.
Norway Telephone Company, Inc.	Norway, S. C.	J. C. Williams, Mgr.	Norway, S. C.
Palmetto Rural Telephone Coop., Inc.	Colleton, Cottageville, Hendersonville, Lodge, Williams, S. C.	Dan Dandridge, Mgr.	Walterboro, S. C.
Piedmont Rural Telephone Coop., Inc.	Enoree, Gray Court, Hickory Tavern, Laurens Rural, Waterloo, West End, S. C.	J. S. Stoddard, Mgr.	Laurens, S. C.

TELEPHONE UTILITIES OPERATING IN SOUTH CAROLINA, JUNE 30, 1978—Continued

Name of Company	Exchanges	Managing Officer/Addressee	Address
Pond Branch Telephone Company	Gilbert, Pelion, Pond Branch, Swansea, Wagener, S. C.	N. Everett Kneece, V-Pres. and Mgr.	Gilbert, S. C.
* Ridge Telephone Company	Ridge Spring, S. C.	E. P. Boatwright, Mgr.	Ridge Spring, S. C.
Ridgeway Telephone Company, Inc.	Ridgeway, S. C.	B. Y. Palmer, Mgr.	Ridgeway, S. C.
Rock Hill Telephone Company	Rock Hill, S. C.	F. S. Barnes, Pres.	Rock Hill, S. C.
Sandhill Telephone Coop., Inc.	Chesterfield, Jefferson, Pageland, Patrick, Ruby, McBee, Bethune, S. C.	John D. McLaurin, Mgr.	Jefferson, S. C.
* South Carolina Telephone Corporation ..	Lexington, Kershaw, Inman	LeRoy Darling, Pres.	Lexington, S. C.
Southern Bell Tel & Tel Co.	Aiken, Allendale, Anderson, Bamberg, Barnwell, Bath, Belton, Bennettsville, Blue Ridge, Blacksburg, Blackville, Blenheim, Camden, Central, Chapin, Charleston, Cheraw, Clemson College, Clinton, Olio, Clover, Columbia, Congaee, Cowpens, Darlington, Denmark, Dillon, Easley, Eastover, Edgefield, Edisto Beach, Florence, Folly Beach, Fountain Inn, Gaffney, Graniteville, Greenville, Greer, Hartsville, Hickory Grove, Honea Path, Isle of Palms, Joanna, Johnston, Jonesville, Lake View, Lake Wylie, Latta, Leesville, Liberty, Little Mountain, Lyman, Marion, McColl, Mt. Pleasant, Mullins, Newberry, New Ellenton, Nichols, North Augusta, Orangeburg, Pacolet, Pelzer, Pendleton, Pickens, Piedmont, Prosperity, Seneca, Sharon, Six Mile, Spartanburg, Springfield-Salley, St. George, Society Hill, Sullivan's Island, Summerville, Timmonsville, Travelers Rest, Union, Walhalla, Westminster, Whitmire, Williamston, York, S. C.		
St. Matthews Telephone Co.	St. Matthews, Cameron, Creston, S. C.	H. R. Marsh, V.P. and Gen. Mgr.	Columbia, S. C.
St. Stephen Telephone Co.	St. Stephen, Bonneau, S. C.	R. F. Nickells, Mgr.	St. Matthews, S. C.
United Telephone Company of the Carolinas, Inc.	Beaufort, Branchville, Estill, Eutawville, Hampton, Holly Hill, Laurel Bay, Ridgeland, Greenwood, Hodges, Cross Hill, Saluda, Troy, Ware Shoals, Ninety Six, Chappells, Mountville, S. C.	F. O. Baxter, Mgr.	St. Stephen, S. C.
West Carolina Rural Telephone Coop.	Due West, Iva, Plum Branch, Starr, W. Abbeville, S. C.	John W. Kirby, Vice Pres.	Southern Pines, N. C.
Williston Telephone Company	Williston, North, S. C.	L. B. Thompson, Mgr.	Abbeville, S. C.
		W. E. Knotts, Mgr.	Williston, S. C.

**RADIO COMMON CARRIERS IN SOUTH CAROLINA
ISSUED CERTIFICATES OF PUBLIC
CONVENIENCE AND NECESSITY**

Able Answering Service
P. O. Box 1409
Sumter, South Carolina 29150

Aiken Mobile Communications, Inc.
639 Rutledge Street
Camden, South Carolina 29020

All Services, Inc.
3785 Dorchester Road
Charleston, South Carolina

ASTA, Inc.
1302 S. McDuffie Street
Anderson, South Carolina 29621

Camden Mobile Communications, Inc.
1105 Broad Street
Camden, South Carolina 29020

Columbia Telephone Answering Service
1520 Bull Street
Columbia, South Carolina

Communication Technical Sales, Inc.
2021 Rosewood Drive
Columbia, South Carolina

Eagle Aviation
Columbia Metropolitan Airport
West Columbia, South Carolina 29169

Evans Radio Company, Inc.
1218 Henderson Street
Columbia, South Carolina

Morris Communications, Inc.
103 Pickens Street
Greenville, South Carolina 29611

Myrtle Beach Communications
325 53rd Avenue
P. O. Box 3527
North Myrtle Beach, South Carolina 29582

Harry L. Parker
dba Parker Electronics
P. O. Drawer H
Georgetown, South Carolina 29440

Rock Hill Mobile Communications, Inc.
P. O. Box 470
Rock Hill, South Carolina 29730

Tele Page of Beaufort, Inc.
Lady's Island
Beaufort, South Carolina 29902

Telpage of South Carolina
Suite 203
6296 Rivers Avenue
North Charleston, South Carolina 29406

ELECTRIC DEPARTMENT

The Electric Department is responsible for providing the Commission with data and information necessary for the regulation of the privately-owned Electric Utilities operating in South Carolina. The Commission requires the Electric Utilities under its jurisdiction to provide adequate service at reasonable rates that provide the Utilities with not more than a reasonable return on the fair values of properties devoted to the public service.

The Electric Department also handles service and high bill complaints and during the calendar year 531 formal complaints were investigated. Numerous other complaints and requests for information were received over the telephone and were handled without a formal investigation.

In September of 1976 the Commission installed a toll free line so consumers throughout the State could call the Commission free of charge and register complaints or request information. The Electric Department received over 110 WATS line calls during the calendar year.

Each of the three large electric utilities are planning and building new generating plants, transmission and distribution lines so that adequate electric power will always be available for present customers and any others that may locate in this State.

South Carolina customers are receiving some power from the Clark Hill Project and Hartwell Project through transmission lines of South Carolina Public Service Authority, Duke Power Company and South Carolina Electric & Gas Company.

The major utilities operating in South Carolina as well as neighboring utilities in Georgia and North Carolina are connected by numerous high voltage transmission lines and, in case of emergency, power is transmitted between the interconnected companies affording the ultimate consumer a better and more continuous supply of power.

The VACAR Group of the Southeastern Electric Reliability Council is a group of electric utilities operating in Virginia, North Carolina and South Carolina. The Reliability Council, Regional and National, was formed to increase the reliability of the bulk electric power supply of the National and the several Area Councils.

Carolina Power and Light Company, Duke Power Company, South Carolina Electric & Gas Company, South Carolina Public Service Authority, Virginia Electric and Power Company and several smaller utilities are in the VACAR Group and these companies

exchange information on planning, construction, system loads and other matters affecting the bulk power supply of this area.

The South Carolina residential electric consumer, after having enjoyed continually decreasing costs from 1931 to 1969, has now begun to feel the effects of inflation. Due to the rapidly increasing costs of money, fuel and other items that go into the cost of providing electric service, the Commission has granted the electric utilities under its supervision increases in rates in order that the companies can continue to provide adequate electric service. In spite of these increases, the average South Carolina residential consumer pays an average of 3.71 cents per KWH, compared to the National Average rate of 4.70 cents per KWH.

A chart has been prepared comparing the residential electric consumption and the average price paid by the South Carolina consumers with the average consumption and average price paid by the average United States consumer. This chart is printed on one of the following pages.

It is believed that there is no power shortage in South Carolina, and further that the organizations in South Carolina that generate and sell electric service will provide adequate power at reasonable rates for the present and future needs of this State. In fact, at this time, there are new generating facilities under construction by both privately-owned and publicly-owned utilities within the State.

It is interesting to note that generating stations constructed in recent years by South Carolina Utilities have been among the most efficient in the United States and recently Duke Power Company was reported to have the second most efficient generating system in this Country, as well as the most efficient generating unit.

RATES

During 1977 the 641,530 residential customers in South Carolina served by the privately-owned electric utilities paid \$291,824,416 for 7,858,442,184 kilowatt-hours. The average South Carolina customer used 12,249 kilowatt-hours during the year for which he paid a total of \$454.43 at an average rate of 3.71 cents per kilowatt-hour, as compared to the average customer throughout the United States, who used 8,693 kilowatt-hours for which he paid a total of \$328.60 at an average rate of 3.78 cents per kilowatt-hour during 1977.

The average rate paid in South Carolina is lower than the average rate paid by all residential customers in the United States, including

those customers in the Tennessee Valley and other areas where publicly-owned power is provided. In South Carolina, if Santee-Cooper residential statistics were included with those of the privately-owned utilities, the South Carolina average rate probably would be even lower.

There are 2,814 large industrial customers of the privately-owned utilities in South Carolina who purchased 13,823,357,012 kilowatt-hours at an average rate of 2.16 cents per kilowatt-hour, which is below the power rates in a large part of this Nation.

Industries now located within South Carolina and other industries desiring reasonable electric power rates will find that electric power can be secured throughout practically the entire State at very reasonable rates.

RURAL ELECTRIFICATION

The growth of rural electrification in South Carolina has been very rapid. There are now nearly half a million rural and suburban electric customers in South Carolina receiving central station service; that is, they are served by the same generating stations that serve the urban customers. It is believed that practically every rural and suburban home in South Carolina that desires electric service now has or can secure electric service. Of course, there are isolated cases where several miles of line would be required to serve a single home far removed from other homes, or even a fishing shack on a river, and where the cost of providing service is greatly out of proportion to the use to be made of electric service.

The big job left to be done is in connecting those customers living on present lines, who for various reasons, have not secured electric service and those new customers who build new homes adjacent to present lines and in increasing the capacity of present lines to take care of the greatly increased loads due to the use of more and more time saving and money-saving convenient electric appliances.

The Commission and Staff have always worked with all potential electric consumers and have helped thousands of them to secure central station electric service.

RURAL TERRITORY ACT

The General Assembly passed the "Rural Territory Act" in 1969 and the Commission, pursuant to the Act has required all "Electric Suppliers" to file maps with the Commission showing rural electric lines in existence as of July 1, 1969. As of July 1, 1971, mylar maps of all counties in South Carolina had been filed with the Commission and negotiations between the several "Electric Suppliers" was begun.

Territory in practically all of South Carolina has been agreed upon by the "Electric Supplies" and Orders approving the allocation of territory have been issued by the Commission.

SITING ACT

The 1971 General Assembly passed an Act to give the Commission authority over "UTILITY FACILITY SITING AND ENVIRONMENTAL PROTECTION" effective January 1, 1972.

The larger utilities are now advising the Commission of planned construction within the next ten years and of probable construction within the next twenty years.

Engineers in the Electric Department perform such other duties as assigned by the Commission.

A number of statistical tables and charts are included in this report to show the growth and health of the electrical utilities under jurisdiction of this Commission.

INSTALLED GENERATING CAPACITY IN SOUTH CAROLINA—JUNE 30, 1977

	INSTALLED CAPACITY-KILOWATTS				
	Fossil Steam	Internal Combustion Turbine	Nuclear Steam	Hydro	Total
PRIVATELY-OWNED					
Carolina Power & Light Company					
Darlington County		630,000			630,000
H. B. Robinson	203,635	16,320			219,955
H. B. Robinson			768,681		768,681
Total	203,635	646,320	768,681		1,618,636
Duke Power Company					
Boyd's Mill				220	220
Buzzard Roost	16,100	196,000		13,200	225,300
Cedar Creek				39,500	39,500
Dearborn				35,600	35,600
Fishing Creek				42,200	42,200
Gaston Shoals				8,000	8,000
Great Falls				24,800	24,800
Holiday's Bridge				805	805
Jocassee				610,000	610,000
Keowee				140,000	140,000
Lee	376,000	90,000			466,000
Ninety Nine Islands				19,700	19,700
Oconee I, II, III			2,598,000		2,598,000
Rocky Creek				27,000	27,000
Saluda				550	550
Urquhart		40,000			40,000
Wateres				71,500	71,500
Wylie				55,000	55,000
Total Duke Power Company	392,100	326,000	2,598,000	1,088,075	4,404,175
Lockhart Power Company					
Lockhart	5,000			12,300	17,300
South Carolina Electric & Gas Co.*					
Beaufort		33,000			33,000
Canadya	473,000	16,000			489,000
Faber Palace		11,000			11,000
Coit		40,000			40,000
Columbia Canal				10,600	10,600
Dreher Shoals-Lake Murray				216,000	216,000
Hagood	94,000				94,000
Hardeeville		16,000			16,000
McMeekin	253,000				253,000
Neal Shoals				4,500	4,500
Parr Shoals	70,000	70,000		14,880	154,880
Stevens Creek				18,880	18,880
Urquhart	260,000	36,000			296,000
Wateres	770,000				770,000
Williams	611,000	60,000			671,000
Total South Carolina Electric & Gas Company	2,536,000	232,000		264,880	3,032,880
Total Privately-Owned Utilities ..	3,136,735	1,254,320	3,366,681	1,865,235	9,122,971
PUBLICLY-OWNED					
Abbeville		1,000		2,800	3,800
S. C. Public Service Authority					
Georgetown	280,000				280,000
Hilton Head		20,000			20,000
Jefferies	412,000			128,000	540,000
Myrtle Beach		62,000			62,000
Wilson Landing				1,920	1,920
Total	692,000	82,000		129,920	903,920

INSTALLED GENERATING CAPACITY IN SOUTH CAROLINA—JUNE 30, 1977—Continued

	INSTALLED CAPACITY-KILOWATTS				
	Fossil Steam	Internal Combustion Turbine	Nuclear Steam	Hydro	Total
Central Electric Power Cooperative					
Grainger	170,000				170,000
Hilton Head		20,000			20,000
Total	170,000	20,000			190,000
Total Publicly-Owned	862,000	103,000		132,720	1,097,720
TOTALS	3,998,735	1,357,320	3,366,681	1,497,955	10,220,691

NOTES:

* S. C. E. & G. Co. has a 6,000 KW portable gas-turbine driven generator available anywhere on system.

Half of Clark Hill capacity of 280,000 KW (hydro) and half of Hartwell capacity of 264,000 KW (hydro) is allocated to preference customers in South Carolina.

RESIDENTIAL ELECTRIC SERVICE PRIVATELY- OWNED ELECTRIC UTILITIES OPERATING IN SOUTH CAROLINA 1977

Company	Kilowatt Hours	No. of Customers	Revenue	Avg. Rate Cents Per KW-Hr.	KW-Hr. Per Customer	Average Annual Bill
Carolina Pwr. & Light Co.	1,211,151,816	95,884	\$ 45,743,779	3.776	12,631	\$476.95
Clinton Mills	4,534,249	615	176,261	3.887	7,373	286.59
Duke Power Company	3,238,529,338	263,320	108,620,140	3.354	12,276	411.74
Heath Springs Lt. & Pwr. Co.	6,809,740	713	210,582	3.092	9,551	295.32
Lockhart Power Company	40,297,706	4,100	1,219,956	3.027	9,829	297.52
S. C. Electric & Gas Co.	3,357,119,335	276,398	135,853,698	4.047	12,146	491.55
Total	7,858,442,184	641,530	\$291,824,416	3.714	12,250	\$454.96

SALE OF ELECTRIC POWER IN SOUTH CAROLINA BY PRIVATELY-OWNED ELECTRIC UTILITIES IN 1977

Class of Service	Kilowatt Hours Sold	No. of Customers	Revenue
Residential	7,858,442,184	641,530	\$291,824,416
Commercial and Small Power	5,298,244,700	98,166	171,946,107
Municipal and Street Lighting	446,957,293	3,453	13,733,369
Industrial	13,823,357,012	2,814	299,241,849
Municipal for Resale	1,835,318,301	32	87,263,645
REA Cooperatives	952,770,816	14	19,334,143
Total to Ultimate Consumers	30,215,090,308	746,008	833,343,531
Other Electric Companies	1,048,643,535	8	17,922,154
Total Electric Sales	31,263,733,843	746,016	851,265,685
Other Electric Revenue			1,485,410
TOTAL	31,263,733,843	746,016	852,751,095

DOMESTIC SERVICE STATISTICAL COMPARISON OF MAJOR ELECTRIC UTILITY COMPANIES OPERATING IN SOUTH CAROLINA

Company — Year	Kw.-Hr.	Revenue	Customers	Average Rate Cents Per Kw.-Hr.	Average Annual Use—Kw.-Hr. Per Customer	Average Annual Revenue Per Customer
Carolina Power & Light Co.						
1932	7,503,977	\$ 458,117.80	10,204	6.105	735	\$ 44.90
1935	10,939,600	494,500.60	11,731	4.520	933	43.15
1940	26,657,500	758,002.18	18,196	2.843	1,465	41.66
1945	48,237,700	1,329,294.05	28,763	2.756	1,677	46.23
1950	126,559,100	2,955,714.87	49,809	2.344	2,541	59.34
1955	234,196,700	4,903,122.93	68,850	2.094	3,726	78.01
1960	350,927,000	6,790,603.09	89,435	1.935	5,054	97.80
1965	486,304,700	8,597,603.38	73,664	1.768	6,602	116.71
1970	840,720,400	13,642,890.57	82,366	1.623	10,207	165.64
1971	885,171,700	15,912,029.84	84,228	1.798	10,509	183.92
1972	915,621,200	17,831,414.17	86,745	1.947	10,555	205.56
1973	1,037,779,354	20,402,309.00	89,266	1.965	11,625	228.56
1974	1,023,836,334	25,927,980.00	91,687	2.532	11,167	282.79
1975	1,072,963,827	31,416,152.00	92,596	2.928	11,587	339.28
1976	1,118,047,400	37,988,225.00	91,656	3.395	11,522	400.33
1977	1,211,151,816	45,743,779.00	95,844	3.776	12,631	476.95
Duke Power Company						
1932	13,514,460	756,738.60	22,376	5.599	604	33.82
1935	19,625,277	844,898.07	27,481	4.509	714	32.20
1940	46,718,561	1,479,019.03	41,771	3.166	978	30.96
1945	81,357,603	2,356,200.83	66,674	2.896	1,220	35.34
1950	267,371,883	5,952,778.21	100,973	2,226	2,643	53.95
1955	539,349,847	11,227,917.90	135,157	2,082	3,991	103.04
1960	813,239,146	16,026,582.48	155,543	1.971	5,223	87.07
1965	1,168,815,918	21,478,962.00	175,944	1.837	6,643	122.08
1970	2,023,344,799	34,946,803.00	210,073	1.727	9,632	166.36
1971	2,207,345,950	42,610,368.00	219,865	1.930	10,040	193.80
1972	2,352,417,524	46,595,143.00	231,812	1.981	10,148	201.00
1973	2,623,832,954	54,466,533.00	238,933	2.075	10,982	227.95
1974	2,690,828,697	69,800,173.00	248,335	2.594	10,835	281.07
1975	2,824,847,000	84,049,250.00	251,187	2.975	11,246	334.61
1976	2,973,011,973	95,627,346.00	255,538	3.117	11,499	369.83
1977	3,238,529,338	108,620,140.00	263,820	3.354	12,276	411.74
S. C. Electric & Gas Co.						
1932	6,458,056	405,256.12	11,321	6.275	570	35.80
1935	9,198,808	447,109.20	12,624	4.862	729	35.42
1940	20,296,986	729,725.95	19,007	3.595	1,068	33.39
1945	34,698,968	1,049,036.75	25,481	3.023	1,362	41.17
1950	238,937,234	6,200,949.96	97,699	2.595	2,446	63.47
1955	519,258,250	12,457,586.00	138,337	2.399	3,754	90.05
1960	850,217,186	18,394,089.78	161,432	2.164	5,265	113.91
1965	1,281,895,086	25,858,455.05	188,343	2.017	6,806	137.29
1970	2,250,612,558	42,866,987.00	228,417	1.904	9,853	187.67
1971	2,374,439,931	47,937,478.00	238,828	2.018	9,942	200.72
1972	2,460,673,482	54,500,773.00	238,345	2.215	10,324	288.66
1973	2,797,439,551	64,155,109.00	247,753	2.293	11,291	258.95
1974	2,765,962,211	84,643,036.00	257,417	3.060	10,754	323.82
1975	2,893,003,110	106,338,964.00	263,711	3.676	10,970	403.24
1976	3,057,045,173	111,059,716.00	270,235	3.631	11,320	410.20
1977	3,357,119,335	135,853,698.00	276,398	4.047	12,146	491.55
South Carolina Power Co.*						
1932	9,620,311	621,449.38	14,741	6.460	653	42.16
1935	14,974,782	678,156.78	16,432	4.529	909	41.15
1940	38,604,331	1,163,738.56	25,007	3.015	1,544	46.54
1945	80,091,232	2,117,962.35	36,658	2.640	2,185	67.78

* NOTE: South Carolina Power Co. was absorbed by South Carolina Electric & Gas Company as of March 31, 1950.

**SOUTH CAROLINA PUBLIC SERVICE COMMISSION ELECTRIC DEPT.
RESIDENTIAL ELECTRIC BILL COMPARISON PRIVATELY OWNED POWER COMPANIES AS
OF JUNE 30, 1978**

KW. Hrs. Per Month	Carolina Power & Light Co.		Clinton Mills	Duke Power Company			Heath Springs Light & Power Co.		S. C. Electric & Gas Co.		Lockhart Power Co.	
	Res-4 * 7-15-77	Res-4 ** 7-15-77	Res. 3-3-76	RA *** 3-1-76	RW 3-1-76	E 3-1-76	Res. 10-6-60	R-L-WH 10-6-60	S 1-1-18	S † 1-1-18	RA ‡ 3-27-78	R 3-27-78
Minimum	\$ 6.00	\$ 6.00	\$ 4.32	\$ 4.80	\$ 4.60	\$ 4.27	\$ 1.00	\$ 1.00	\$ 4.50	\$ 4.50	\$ 4.00	\$ 4.00
100	9.39	9.39	5.76	5.99	5.79	5.46	5.60	5.00	8.48	8.48	6.73	6.73
250	14.49	14.49	11.66	11.11	10.51	10.98	10.95	10.41	14.44	14.44	10.33	10.33
500	22.97	22.97	21.21	18.92	18.47	20.88	19.33	16.70	24.33	24.33	17.66	17.66
750	31.46	31.46	30.68	27.16	26.96	31.37	28.71	22.77	34.31	34.31	24.43	24.43
1,000	38.02	39.94	40.16	35.40	35.45	41.86	37.59	28.84	44.25	44.25	31.31	31.31
1,500	50.19	56.91	58.36	50.93	51.94	62.15	55.35	40.97	66.05	66.05	41.47	46.47
2,000	62.36	73.88	73.51	63.30	67.71	77.92	73.11	53.11	87.85	87.85	51.62	61.62
3,000	86.70	107.82	103.82	88.05	99.26	109.47	108.63	77.38	131.45	131.45	71.93	91.93
4,000	111.04	141.76	134.13	112.79	130.80	141.01	144.15	101.65	175.05	175.05	134.34	122.24
5,000	135.33	175.70	164.43	137.54	162.35	172.56	179.67	125.92	218.65	218.65	112.55	152.55

- † All Electric Service for Months of October through June, otherwise use Rate S.
‡ All Electric Service for Months of October through April, otherwise use Rate R.
* November through June Billing.
** July through October Billing.
*** All Electric Customer.

**ELECTRIC GENERATION ACCOUNT OF
PRIVATELY-OWNED ELECTRIC UTILITIES
OPERATING IN SOUTH CAROLINA 1977**

	Kilowatt Hours
Steam Generation	27,105,786,000
Hydro Generation	2,239,920,800
Gas Turbine Generation	527,745,000
Nuclear Generation	17,233,517,000
Total	47,112,268,800
Purchased	620,312,249
Total Generation and Purchased	47,741,581,049

**SALE TO MUNICIPALITIES FOR RESALE
1977**

Municipality	Company	Kilowatt Hours	Revenue	Avg. Rate Cents Per Kw. Hr.
Abbeville	Duke Power Company	26,875,408	\$ 527,173	1.96
Bennettsville	Carolina Power & Light Co.	65,449,000	1,454,344	2.22
Camden	Carolina Power & Light Co.	112,331,000	2,547,230	2.27
Clemson	Duke Power Company	68,100,480	1,341,562	1.97
Clinton	Duke Power Company	76,097,600	1,527,574	2.01
Due West	Duke Power Company	7,377,840	160,450	2.20
Easley	Duke Power Company	125,144,074	2,453,071	1.96
Gaffney	Duke Power Company	108,022,426	2,091,189	1.94
Greenwood	Duke Power Company	138,192,189	2,771,569	2.01
Greer	Duke Power Company	97,209,131	1,891,639	1.95
Laurens	Duke Power Company	56,486,808	1,121,938	1.97
McCormick	S. C. Electric & Gas Co.	13,635,200	303,349	2.22
Newberry	Duke Power Company	86,713,295	1,755,125	2.02
Orangeburg	S. C. Electric & Gas Co.	405,072,000	8,653,173	2.14
Prosperity	Duke Power Company	5,327,770	119,422	2.24
Rock Hill	Duke Power Company	280,008,204	5,548,710	1.94
Seneca	Duke Power Company	75,994,200	1,500,128	1.97
Union	Lockhart Power Company	88,500,000	1,686,451	1.91
Westminster	Duke Power Company	20,256,960	421,003	2.08
Winnaboro	S. C. Electric & Gas Co.	37,965,600	836,276	2.20
Total		1,900,759,185	\$38,717,426	2.062

**ORGANIZATIONS FURNISHING RETAIL ELECTRIC
SERVICE IN URBAN AND RURAL AREAS OF
SOUTH CAROLINA AS OF JUNE 30, 1978**

Privately Owned Utilities

Privately owned Electric Companies	Managing Officer	Address
Carolina Power & Light Co.	Sherwood Smith, Pres.	Raleigh, N. C.
Clinton Mills	R. M. Vance, Pres.	Clinton, S. C.
Duke Power Co.	B. B. Parker, Pres.	Charlotte, N. C.
Heath Springs Light & Power Co.	W. H. Bridges, Pres.	Heath Springs, S. C.
Lockhart Power Co.	L. S. Anderson, Mgr.	Lockhart, S. C.
S. C. Elec. & Gas Co.	Virgil Summer, Pres.	Columbia, S. C.

Rural Electric Cooperatives

Publicly Owned (Federally Financed) Electric System	Managing Officer	Address
Aiken Elec. Co-op., Inc.	Hammie L. Chaplin, Mgr.	Aiken, S. C.
Berkeley Elec. Co-op., Inc.	Robert L. Wingard, Mgr.	Moncks Corner, S. C.
Black River Elec. Co-op., Inc. ...	Jack Anderson, Mgr.	Sumter, S. C.
Blue Ridge Elec. Co-op., Inc.	A. J. Hurt, Mgr.	Pickens, S. C.
Broad River Elec. Co-op., Inc. ...	Robert O. Carroll, Mgr.	Gaffney, S. C.
Central Elec. Co-op., Inc.	P. T. Allen, Mgr.	Columbia, S. C.
Coastal Elec. Co-op., Inc.	Larry Bruce, Mgr.	Walterboro, S. C.
Edisto Elec. Co-op., Inc.	Robert A. Smith, Mgr.	Bamberg, S. C.
Fairfield Elec. Co-op., Inc.	E. L. Ayers, Mgr.	Winnboro, S. C.
Horry Elec. Co-op., Inc.	Charlie Webster, Mgr.	Conway, S. C.
Laurens Elec. Co-op., Inc.	David Wasson, Mgr.	Laurens, S. C.
Little River Elec. Co-op., Inc. ...	J. L. White, Mgr.	Abbeville, S. C.
Lynches River Elec. Co-op., Inc. ..	Hebert Leaird, Mgr.	Pageland, S. C.
Marlboro Elec. Co-op., Inc.	Robert B. Awbrey, Mgr.	Bennettsville, S. C.
Mid-Carolina Elec. Co-op., Inc. ..	Jack F. Wolfe, Jr., Act. Mgr. ..	Lexington, S. C.
Newberry Elec. Co-op., Inc.	M. Larry Longshore, Mgr.	Newberry, S. C.
Palmetto Elec. Co-op., Inc.	R. Bruce Moysey, Act. Mgr.	Ridgeland, S. C.
Pee-Dee Elec. Co-op., Inc.	Robert W. Williams, Jr.	Darlington, S. C.
Santee Elec. Co-op., Inc.	James E. Player, Mgr.	Kingstree, S. C.
S. C. Public Service Authority ..	William C. Mescher, Mgr.	Moncks Corner, S. C.
Saluda River Elec. Co-op., Inc. ..	Henry M. Faris, Mgr.	Laurens, S. C.
Tri-County Elec. Co-op., Inc.	Howard Wilson, Mgr.	St. Matthews, S. C.
York County Elec. Co-op., Inc. ...	R. O. Williams, Mgr.	York, S. C.

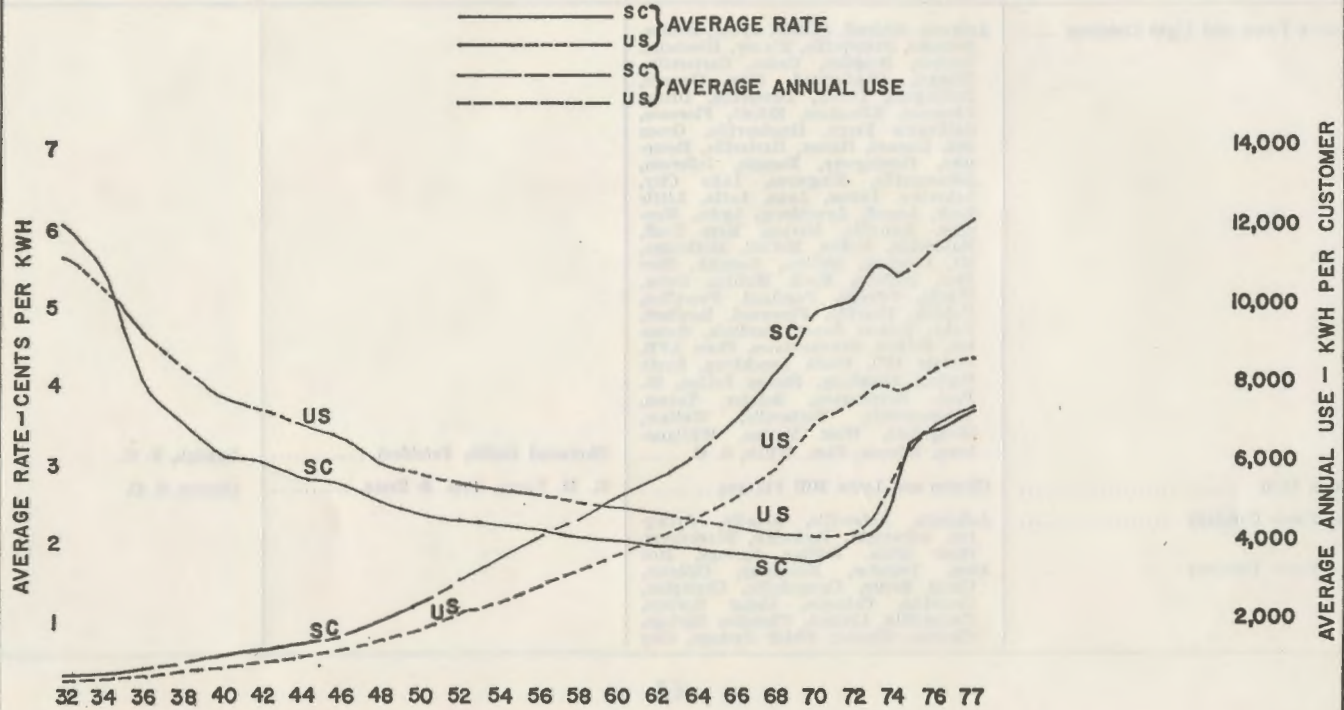
Municipalities

Municipally Owned Utilities	Department	Managing Officer
Abbeville	Water and Electric Plant	James C. Godsey, Mgr.
Barnberg	Public Works	James B. Roberts, Dir.
Bennettsville	Electric and Water Plant	Billy Gibson, Supt.
Camden	Dept. of Utilities	Terry Williams, Supt.
Clinton	Light and Water Plant	Homer L. Martin, Supt.
Due West	Electric Light Dept.	O. H. Hawthorne, Supt.
Easley	City Light and Water Plant	Richard S. Hale, Supt.
Gaffney	Board of Public Works	H. F. Crater, Mgr.
Georgetown	Board of Public Works	W. L. Hewitt, Util. Mgr.
Greenwood	Commission of Public Works	C. E. Grubb, Mgr.
Greer	Commission of Public Works	Kenneth Smith, Mgr.
Laurens	Commission of Public Works	Sam R. Wallace
McCormick	Commission of Public Works	Eaken Cochran, Dir.
Newberry	Robert Shealy, Supt.
Orangeburg	Water and Light Plant	Ted Johnson, Mgr.
Prosperity	Commission of Public Works	Arthur Podmore, Supt.
Rock Hill	Max Holland, City Mgr.
Seneca	Light and Water Plant	Jerry Balding, Supt.
Union	Commission of Public Works	T. D. Sherbert, Jr., Dir.
Westminster	Commission of Public Works	Sam Stribling, Supt.
Winnboro	Light and Water Dept.	John C. Shirley, Supt.

YEAR	K.W.H.	CENTS
1931	600	6.7
32	632	6.042
33	634	5.778
34	695	5.415
35	801	4.576
36	899	4.035
37	1,011	3.731
38	1,081	3.536
39	1,145	3.27
1940	1,203	3.123
41	1,260	3.07
42	1,312	3.025
43	1,450	2.957
44	1,509	2.846
45	1,551	2.804
46	1,691	2.753
47	1,844	2.654
48	2,094	2.524
49	2,319	2.458
1950	2,547	2.387
51	2,755	2.321
52	3,002	2.343
53	3,252	2.310
54	3,571	2.254
55	3,844	2.211
56	4,181	2.165
57	4,300	2.141
58	4,696	2.097
59	4,899	2.077
1960	5,212	2.046
61	5,504	2.022
62	5,766	1.999
63	6,063	1.964
64	6,399	1.932
65	6,706	1.904
66	7,158	1.868
67	7,462	1.852
68	8,391	1.800
69	9,020	1.775
1970	9,819	1.788
71	10,070	1.947
72	10,287	2.076
73	11,214	2.154
74	10,847	2.783
75	11,178	3.266
76	11,449	3.419
77	12,249	3.713

AVERAGE COST PER K.W.H.
RESIDENTIAL SERVICE
THREE LARGE PRIVATELY OWNED UTILITIES

DOMESTIC ELECTRIC SERVICE
U.S. AVERAGE VS S.C. AVERAGE



Power Companies Operating in South Carolina, June 30, 1978

Power Company	Territory Served	Managing Officer	Address
Carolina Power and Light Company	Andrews, Ashland, Auburn, Aynor, Bethea, Bethune, Bishopville, Blaney, Blenheim, Britton, Brogdon, Cades, Cartersville, Cheraw, Chesterfield, Clio, Coward, Darlington, Dillon, Dovesville, Drake, Ebenezer, Effingham, Elliott, Florence, Gallivants Ferry, Greeleyville, Green Sea, Hagood, Hamer, Hartsville, Heineman, Hemingway, Horatio, Jefferson, Johnsonville, Kingstree, Lake City, Lakeview, Lamar, Lane, Latta, Little Rock, Lugoff, Lynchburg, Lydia, Manning, Manville, Marion, Mars Bluff, Mayesville, McBee, McColl, Motbridge, Mt. Croghan, Mullins, Nesmith, New Zion, Nichols, North Mullins, Oates, Olanta, Oswego, Pageland, Pamplico, Patrick, Paxville, Pinewood, Rembert, Ruby, Salters Depot, Sardinia, Scranton, Sellers, Shannontown, Shaw AFB, Society Hill, South Lynchburg, South Marion, Stateburg, Stokes Bridge, St. Paul, Summerton, Sumter, Tatum, Timmonsville, Turbeville, Wallace, Wedgefield, West Marion, Williamsburg, Winona, Zion, Willis, S. C.	Sherwood Smith, President	Raleigh, N. C.
Clinton Mills	Clinton and Lydia Mill Villages	R. M. Vance, Pres. & Treas.	Clinton, S. C.
Duke Power Company	Anderson, Antreville, Arcadia, Arlington, Arkwright, Barksdale, Blacksburg, Blair Mills, Boiling Springs, Bon Avon, Brandon, Broadway, Calhoun, Camp Sevier, Campobello, Crampton, Cashville, Catawba, Cedar Springs, Centerville, Central, Cherokee Springs, Chesnee, Chester, Chick Springs, City		
Duke Power Company			

View, Clevedale, Cleveland, Clifton Mills, Clinton, Clover, Cokesbury, Cold Point, Concord, Conestee, Converse, Cowpens, Crescent, Cross Hill, Deans Station, Delphia, Disputanta, Donalds, Drayton, Duncan, East Gaffney, Edgemoor, Elgin, Enoree, Equinox Mills, Eureka Mills, Evansville, Fairforest, Fairmount, Filbert, Fingerville, Flat Rock, Flat Woods, Fork Shoals, Fort Lawn, Fort Mill, Fountain Inn, Gaffney, Glendale, Glenn Springs, Gluck Mill, Gowansville, Gramling, Grassy Pond, Gray Court, Gray's Gln, Great Falls, Greenville, Greer, Harris, Haynes, Hickory Grove, Hickory Tavern, Hillcrest, Hodges, Holly Springs, Honea Path, Inman, Iva, King's Creek, La France, Lancaster, Lando, Landrum, Langford Station, Laurens, Leslie, Lewis Turnout, Level Land, Liberty, Lone Oak, Lowrys, Lyman, Madden, Marietta, Mascot, Maud, Mauldin, Mayo, McConellsville, Midway, Monaghan, Moore, Mountville, Mountain Creek, Mt. Gallagher, New Prospect, Newry, Ninety-Six, Norris, Ora, Orrville, Owings, Pacolet, Pauline, Pelham, Pelzer, Pendleton, Pickens, Piedmont, Popular Springs, Princeton, Reidsville, Renfrew, Richburg, Rodman, Roebuck, Salem Church, Sandy Springs, Saxon, Sediaia, Sharon, Sigsbee, Simpsonville, Six Mile, Smyrna, Spartanburg, Syringdale, Starr, Switzer, Taylors, Tigerville, Tirzah, Townville, Travelers Rest, Trough Shoals, Tucapan, Una, Valley Falls, Verdery, Walhalla, Ware Shoals, Waterloo, Watts Mill, Wellford, West Greenville, West Pelzer, West Union, White Stone, Whitmire, Whitney, Woodruff, York.

W. S. Lee, President

Charlotte, N. C.

Power Companies Operating in South Carolina, June 30, 1978—Continued

Power Company	Territory Served	Managing Officer	Address
Heath Springs Light & Power Company ..	Heath Springs, Pleasant Hill, S. C.	W. H. Bridges, President	Heath Springs, S. C.
Lockhart Power Company	Adamsburg, Cross Anchor, Cross Keys, Jonesville, Lockhart, Monarch, Pacolet Mills, Sedalia, S. C.	L. S. Anderson, Mgr.	Lockhart, S. C.
South Carolina Electric & Gas Co.	Arden, Ballentine, Batesburg, Blythewood, Bowman, Cameron, Carlisle, Cayce, Chapin, Chappells, College Place, Co- lumbia, Cordova, Creston, Edgewold, Edgewood, Elloree, Forest Acres, Fort Motte, Gadsden, Gaston, Dentsville, Eastover, Eau Claire, Gilbert, Hopkins, Hyatts, Irmo, Jenkinsville, Johnston, Leesville, Lexington, Little Mountain, Livingston, Lykesland, Monetta, Neeses, North, Norway, Parler, Parr, Peak, Pelion, Perry, Pomaria, Pontiac, Red Bank, Ridge Springs, Ridgeway, Ridge- wood, Rion, Rockton, Rowesville, Roy- ster, Salley, Saluda, Santuc, Seivern, Shelton, St. Matthews, Summit, Swan- sea, Trenton, Wagener, Ward, West Co- lumbia, White Rock, Woolford, S. C.	Virgil Summer, President	Columbia, S. C.
South Carolina Electric and Gas Company Successor to South Carolina Power Company	Adams Run, Aiken, Allendale, Ashley Junction, Ashley Phosphate, Awendaw, Bamberg, Barnwell, Bath, Beech Island, Beaufort, Belvedere, Berry Hill, Black- ville, Bluffton, Bordeaux, Boyer, Branch- ville, Brunson, Burnetttown, Burton, Calhoun Falls, Canadys, Charleston, Cherokee, Chicora, Clark's Hill, Clearwater, Connors, Cooper Yard, Coosawatchie, Cope, Cottageville, Crocketville, Dale, Denmark, Dor- chester, Drayton Hall, Dunbarton, Dupont, Early Branch, Edgefield,		

South Carolina Electric and Gas Company
 Successor to South Carolina Power
 Company

Edisto Island, Ehrhardt, Elko, Ellenton,
 Estill, Eutawville, Fairfax, Furman,
 Garnett, Gloverville, Goodrich, Govan,
 Grahamville, Graniteville, Green Pond,
 Hampton, Hanahan, Hardeeville, Harley-
 ville, Hendersonville, Holly Hill, Horse
 Pond, Isle of Palms, James' Island,
 Jedburg, John's Island, Johnstown,
 Kline, Langley, Lincolnville, Lodge,
 Luray, Madison, Magnolia, Maryville,
 McClellanville, Meggetts, Myers, Mid-
 land Park, Miley, Modoc, Montmorenci,
 Mt. Carmel, Mt. Pleasant, North Au-
 gusta, North Charleston, Olar, Parks-
 ville, Plum Branch, Pocotaligo, Port
 Royal, Pritchardville, Ravenel, Reeves-
 ville, Rosinville, Ridgeland, Ridgville,
 Round, Ruffin, Scotia, Seiglinville,
 Sheldon, Six Mile, Smoaks, Snellings,
 Springfield, St. Andrew's Parish, St.
 George, Sullivan's Island, Summerville,
 Switzerland, Sycamore, Ten Mile, Tilma,
 Troy, Ulmers, Vance, Varnville, Vau-
 cluse, Walterboro, Warrenville, White
 Pond, Williams, Willington, Williston,
 Windsor, Yemassee, Yorges Island, S. O.

Virgil Summer, President

Columbia, S. C.

South Carolina Public Service Authority
 (Santee-Cooper)

Atlantic Beach, Burgess, Conway, Cherry
 Grove Beach, Crescent Beach, Floral
 Beach, Ingram Beach, Loris, Little
 River, Moncks Corner, Myrtle Beach,
 Murrell's Inlet, Ocean Drive Beach,
 Socastee, Wampee, St. Stephen, S. O.

William C. Mescher, President

Moncks Corner, S. C.

TRANSPORTATION DIVISION

Administration—The duty of this Division is to enforce the Motor Vehicle Carrier Law of the State, Sections 58-23-10 - 58-23-60 of the South Carolina Code of Laws, 1976, as amended. The Law provides for the regulation, supervision and control of persons, firms, corporations, etc., operating motor vehicles used in the business of transporting persons or property for compensation over the highways of the State, and impose license fees to cover the cost of administration.

During the period of this report, 104 hearings were held in connection with motor transportation matters.

In connection with Class A carriers (regular route bus); two hearings were heard and granted: one hearing for amendment was heard and granted.

Forty-six applications for Class E (motor freight service over irregular routes) certificates were heard, of which 34 were granted; 5 cancelled; one suspended; 2 dismissed; 3 withdrawn; and 1 denied. Thirty applications to amend Class E Certificates were heard, of which 29 were granted and 1 denied. Three applications to transfer Class E Certificates were heard and granted.

Twenty-one applications for Class F (motor freight service under contract) Certificates were heard, of which 13 were granted; 2 denied; 2 cancelled; 1 dismissed; 1 reinstated; and 2 withdrawn. Nine applications to amend Class F Certificates were heard and granted. One Restricted Class F was heard and granted.

One application to transfer a Class C (taxicabs and charter buses) Certificate was heard and denied; 2 applications were withdrawn.

In addition to matters which were disposed of after public hearing, 400 orders were issued disposing of motor transportation matters without hearing.

In connection with Class A Carriers (regular route bus); 15 Restricted Class A Certificates were granted; 14 Certificates were cancelled; 4 Certificates were suspended; 1 Certificate was amended; and 3 reinstated.

In connection with Class C Carriers; 60 Certificates were granted; 60 Certificates were cancelled; 2 were suspended; 3 were amended; 1 withdrawn and 1 Petition denied.

In connection with Class E Carriers, 14 Certificates were granted; 19 Certificates were cancelled; 21 Certificates were suspended; 4 were amended; 26 were transferred; 16 withdrawn and 1 was dismissed. One application for cancellation of lease for authority was

granted. Five applications for reinstatement of Class E Certificates were granted. Thirty-two Class E Certificates, restricted to Interstate Commerce Only, were granted, and one was denied. Twelve Certificates were cancelled; six suspended; one withdrawn; two reinstated and one set for hearing. One Certificate amendment was granted and one transfer dismissed.

In connection with Class F Carriers; two certificates were granted; seven certificates were cancelled; 6 certificates were suspended; 4 certificates were amended; 5 withdrawn and one set for hearing. Six Class F Certificates, restricted to Interstate Commerce Only were granted; six cancelled; 5 amended; 2 transferred and one reinstated.

In connection with Class B Carriers (regular route bus regular schedules); one certificate was transferred. Twenty-six Class D, restricted to Interstate Commerce Only were suspended.

A Rule to Show Cause why Certificates of Public Convenience and Necessity should not be Revoked for failure to comply with the Motor Vehicle Carrier Law of South Carolina was issued against 37 carriers, resulting as follows: three Class A Certificates were revoked and cancelled. Fourteen Class C Certificates were cancelled. Two Class E Certificate holders, restricted to Interstate Commerce Only, were dismissed, and two certificates were revoked and cancelled. Rules against two Class E Certificate holders were suspended and ten were revoked and cancelled. Rules against three Class F Certificate holders were revoked and cancelled. Rule against one Class F Certificate holder, restricted to Interstate Commerce Only was revoked and cancelled.

A Second Rule to Show Cause why Certificate of Public Convenience and Necessity should not be revoked for failure to comply with the Motor Vehicle Carrier Law of South Carolina was issued against 69 carriers, resulting as follows: Rules against 4 restricted Class A Certificate holders were revoked and cancelled. Rule against one Class B Certificate holder was revoked and cancelled. Thirteen Class C Certificate holders were revoked and cancelled. Rules against two Class E Certificate holders, Restricted to Interstate Commerce Only, were revoked and cancelled. Rules against 39 Class E Certificate holders were revoked and cancelled. Ten Class F Certificate holders were revoked and cancelled.

The Transportation Division has jurisdiction over city bus transportation where the bus service supersedes electric street railway transportation. This gives the Commission jurisdiction over city bus

transportation in Anderson, Charleston, Columbia and Spartanburg, South Carolina.

Gasoline and Diesel buses were operated in South Carolina by the Duke Power Company at Anderson and Spartanburg, and by the South Carolina Electric and Gas Company at Charleston and Columbia, South Carolina.

During the year 1977, the above named bus companies transported 9,247,450 passengers as compared to 11,412,051 in 1976. This was a decrease of 2,164,601 passengers in 1977 compared to 1976. (The 2,164,601 shows a 19% drop in total passengers for 1977.)

During the fiscal year 1977-1978, a number of changes were made in bus routes and schedules in order to make the most economical use of the facilities of various bus transportation companies operating in this State.

LICENSING DEPARTMENT

Carriers operating within the State of South Carolina on an intra-state basis, and carriers based in South Carolina operating on an interstate basis have, over the years, purchased licenses and paid fees as indicated by the table below.

Statement Showing Receipt and Deposits to the Credit of the State Treasurer, Cost of Administration and Balance for Distribution to Cities and Towns during the Period July 1, 1977, thru June 30, 1978

Revenue Receipts:	
Class A Licenses	\$ 125,974.28
Class B Licenses	856.27
Class C Licenses	20,123.75
Class D Licenses	25,519.34
Class E Licenses	629,848.25
Class F Licenses	54,924.00
Total Fees (Gross)	\$ 857,045.89
Less Fees Refunded	792.50
Total Fees (Net)	856,253.39
Receipts from S. C. Tax Commission	
(Motor vehicle registrations)	870,499.00
Total License and Registration fees	1,726,752.39
Cost of Administration	740,751.29
Balance for Distribution to Cities and Towns	986,001.10
Total	\$1,726,752.39
APPEARANCE AND CASH BOND ACCOUNT:	
On hand July 1, 1977	\$ 6,400.00
Collected	10,400.00
Total	16,800.00
Less Bonds Refunded & Forfeited	10,200.00
Balance on hand June 30, 1978	6,600.00

With the growth of the motor carrier industry in this State, together with the better enforcement of the Motor Carrier Law made possible by increased enforcement facilities, the work of this Division has rapidly increased, as evidenced by revenue receipts as shown in the following, through the fiscal year 1962-1963. However, beginning in 1962 the General Assembly for three successive years, passed legislation which reduced license fees for Class D, E and F Certificate holders by twenty-five per cent per year. This reduction is shown in the revenue as collected since that time along with a portion of the motor vehicle registration fees collected by the South Carolina Tax Commission and credited to the Motor Transportation Fund beginning with the fiscal year 1962-1963.

March 10 through December 31, 1928	\$ 15,200.00
Calendar year 1929	20,845.99
Calendar year 1930	39,013.32
Calendar year 1931	57,310.17
Calendar year 1932	57,471.26
Calendar year 1933	63,951.14
Calendar year 1934	81,300.07
Fiscal year 1934-1935	86,060.40
Fiscal year 1935-1936	103,841.91
Fiscal year 1936-1937	155,945.57
Fiscal year 1937-1938	212,950.38
Fiscal year 1938-1939	254,590.53
Fiscal year 1939-1940	250,728.20
Fiscal year 1940-1941	281,796.84
Fiscal year 1941-1942	304,648.97
Fiscal year 1942-1943	387,572.37
Fiscal year 1943-1944	389,184.76
Fiscal year 1944-1945	392,010.25
Fiscal year 1945-1946	403,790.99
Fiscal year 1946-1947	466,040.56
Fiscal year 1947-1948	516,065.26
Fiscal year 1948-1949	547,532.85
Fiscal year 1949-1950	561,256.58
Fiscal year 1950-1951	613,772.53
Fiscal year 1951-1952	647,230.50
Fiscal year 1952-1953	670,693.67
Fiscal year 1953-1954	689,120.74
Fiscal year 1954-1955	691,751.77
Fiscal year 1955-1956	755,682.91
Fiscal year 1956-1957	786,403.41
Fiscal year 1957-1958	770,190.33
Fiscal year 1958-1959	800,455.10
Fiscal year 1959-1960	846,898.69
Fiscal year 1960-1961	841,078.71
Fiscal year 1961-1962	870,505.50
Fiscal year 1962-1963	1,128,437.74
Fiscal year 1963-1964	900,044.65
Fiscal year 1964-1965	707,454.95
Fiscal year 1965-1966	793,226.08
Fiscal year 1966-1967	847,703.71
Fiscal year 1967-1968	895,700.40

Fiscal year 1968-1969	973,913.12
Fiscal year 1969-1970	1,033,553.27
Fiscal year 1970-1971	1,084,739.49
Fiscal year 1971-1972	1,171,000.28
Fiscal year 1972-1973	1,350,164.33
Fiscal year 1973-1974	1,228,220.53
Fiscal year 1974-1975	1,492,578.42
Fiscal year 1975-1976	1,508,338.54
Fiscal year 1976-1977	1,627,335.19
Fiscal year 1977-1978	1,726,752.39

ENFORCEMENT AND SAFETY

1977 - 1978

The enforcement of the Motor Vehicle Carrier Law of the State, Sections 58-23-10 through 58-23-60 of the *South Carolina Code of Laws, 1976*, as amended, is carried out by the staff of thirty-six Inspectors stationed throughout the State. During the Fiscal Year 1977-1978, these Inspectors made a total of 5,945 arrests with a total of \$170,010 in fines.

All of the Inspectors are certified by the South Carolina State Law Enforcement Division, and all have attended or will have attended in the near future the South Carolina Police Academy as required by law. They wear uniforms and patrol in marked cars with two-way radios. Their duties and responsibilities are to insure that the motor carriers under the jurisdiction of the Public Service Commission comply with the *South Carolina Motor Vehicle Carrier Law* and the Commission's *Rules and Regulations Pertaining to Motor Carriers*. The Inspectors investigate suspected violations, issue warrants of arrest, initiate legal proceedings for violations, and work with the regulated carriers and with the public in helping them comply with the law. The Inspectors made 4,002 regulatory arrests with \$120,515 in regulatory fines during the fiscal year.

The Commission's Safety Program was started in 1971, and we now have nine Safety Inspectors who specialize in safety work stationed throughout South Carolina. They conduct safety surveys of motor vehicles on highways and at terminals of for-hire carriers, express companies and bus lines. During the Fiscal Year 1977-1978, the Safety Inspectors made 8,132 safety inspections from which 192 vehicles were placed out-of-service, and 1,943 safety arrests were made with \$49,495 in safety fines.

**SOUTH CAROLINA PUBLIC SERVICE COMMISSION
TRANSPORTATION DIVISION
COMPARATIVE ARREST REPORT**

Fiscal Year	Regulatory Arrests Amount in Regulatory Fines	Safety Inspections	Safety Arrests Amount in Safety Fines	Total Arrests (Regulatory and Safety)	Total Amount in Fines (Regulatory and Safety)
1973-1974	3,018	\$80,400	1,751	371	\$ 8,850
1974-1975	2,015	\$58,089	3,390	570	\$14,315
1975-1976	2,271	\$67,895	3,895	740	\$18,505
1976-1977	3,110	\$89,385	8,056	1,408	\$33,720
1977-1978	4,002	\$120,515	8,132	1,943	\$49,495
					5,945
					\$89,250
					\$72,404
					\$86,400
					\$123,105
					\$170,010

SAFETY REPORT 1977 - 1978 FISCAL YEAR

Month	Safety Inspections	Out of Service Vehicles	Safety Arrests	Amount In Fines
JULY, 1977	446	20	114	\$ 2,850
AUG., 1977	672	25	123	\$ 3,075
SEPT., 1977	780	28	186	\$ 4,785
OCT., 1977	772	15	158	\$ 4,240
NOV., 1977	670	13	136	\$ 3,420
DEC., 1977	529	9	99	\$ 2,550
JAN., 1978	612	8	103	\$ 2,725
FEB., 1978	555	16	146	\$ 3,625
MARCH, 1978	951	17	201	\$ 5,025
APRIL, 1978	689	15	176	\$ 4,550
MAY, 1978	742	11	224	\$ 5,675
JUNE, 1978	714	15	278	\$ 6,975
FISCAL YEAR TOTALS	8,132	192	1,943	\$49,495

AUDIT DEPARTMENT 1977 - 78

The purpose of this department is to perform audits of regulated carriers operating within South Carolina to see that the carriers are operating in accordance with the Rules and Regulations of the Commission and perform audits in regard to rate increase requests.

During the fiscal year ending June 30, 1978, audits were performed as follows:

1. Scope of operations and rate compliance audits 71
2. Rate increase application audits 49

Violations of the Commission's Rules and Regulations found during audits are turned over to the Enforcement Department. There were 66 violations reported to the Enforcement Department this year.

ANNUAL REPORT FOR RAILS AND TARIFFS DEPARTMENT

The personnel of the Rails and Tariffs Department handles and investigates all applications and cases involving rates, fares, charges, practices, services and facilities of the regulated transportation companies in South Carolina. The Chief of this Department prepares, reports and final orders for the Commission. He also serves as the State program coordinator for conducting the investigative and surveillance activities in connection with the railway track standards prescribed by the Federal Railroad Safety Act of 1970.

The Rails and Tariffs Department supervises and maintains a current file of freight, passenger and express tariffs and makes analyses and studies necessary for the Commission's general supervision of the regulated transportation companies. All regulated transportation companies are required to file and receive approval of the Commission for Tariffs setting forth all rates, charges, classification, rules, regulations and practices for South Carolina intrastate transportation. The tariff file contains approximately 1,680 current tariffs for which approximately 14,360 supplements and reissues are received annually.

All cases requiring a public hearing are handled on the Commission's Formal Docket. Such cases result from protests filed by interested parties against petitions or applications by the various regulated carriers seeking authority to discontinue or change an existing service; complaints or protests filed against existing or proposed rates, fares, charges or practices of such carriers; investigations instituted by the Commission upon complaint or its own motion. Formal Docket cases concluded during the 1977 fiscal year were divided as follows:

Railroad	3
Motor Vehicle	11

—
18 Total Formal Docket Cases

In some cases, matters may be settled or adjusted informally, without the necessity of a public hearing, and are handled on the Commission's Informal Docket. Such cases generally involve discontinuance or abandonment of certain minor services or facilities which have become obsolete or for with little, if any, public need continues to exist; such as spur tracks, sidings, removal of old or unused depot buildings at non-agency stations and other like matters, where no

protests nor objections are made by interested parties after due notice has been given. Informal Dockets concluded during the 1977 fiscal year are divided as follows:

Railroad	269
Motor Vehicle	281

550 Total Informal Cases

The South Carolina Railroads are assessed for the support of the Rails and Tariffs Department. For the Fiscal Year ending June 1978, the Railroads were assessed \$50,027.

Healthy competition continues to exist between and within most modes of transportation, with each concentrating their efforts upon the type and nature of traffic each is inherently suited to handle. Continued efforts are being made by the transportation companies to keep abreast of new and improved operating equipment and service facilities which are designed to provide the public with improved equipment and efficient service at reasonable rates and charges.

RAILWAY OPERATING REVENUES, OPERATING EXPENSES AND OPERATING RATIOS

For Year Ending December 31, 1977

Reporting Company	Operating Revenue	Operating Expenses	Operating Ratio
Clinchfield Railroad	\$ 59,934,000	\$ 38,934,000	63.49
Columbia, Newberry & Laurens Railroad	4,132,059	1,862,185	45.07
Greenville & Northern Railway	276,120	283,510	97.39
Hampton & Branchville Railroad	322,128	214,233	66.50
Lancaster & Chester Railroad	730,976	777,976	106.43
Norfolk Southern Railway	32,899,000	24,657,000	74.94
Pickens Railroad	4,579,384	3,637,913	79.44
Rockton & Rion Railway*	620	4,710	—0—
Seaboard Coast Line Railroad	826,910,000	618,635,000	74.81
Southern Railway	732,902,000	551,986,000	75.32
Ware Shoals Railroad	72,076	67,421	93.54

* The Rockton & Rion is a Common Carrier by Railroad in South Carolina Intrastate Commerce Only.

Operating Ratios are percentage relationships of Operating Expenses to Operating Revenues. Figures shown are for operations in State and Interstate Commerce.

RAIL INCOME
Year Ending December 31, 1977

Name of Reporting Company	Net Railway Operating Income	Net Income After Fixed Charges & Other Deductions
Clinchfield Railroad	\$13,591,000	\$ See note (1)
Columbia, Newberry & Laurens Railroad	636,102	592,382
Greenville & Northern Railway	(38,865)	(12,705)
Hampton & Branchville Railroad	54,063	46,815
Lancaster & Chester Railroad	(179,398)	87,301
Norfolk Southern Railway	3,834,000	3,039,000
Pickens Railroad	—0—	516,142
Rockton & Rion Railway	(4,362)	(5,987)(2)
Seaboard Coast Line Railroad	80,591,000	103,037,000
Southern Railway	88,101,000	110,546,000
Ware Shoals Railroad	(3,972)	(3,895)

NOTE (1) (Clinchfield Railroad)

The Clinchfield Railroad Company is the operating company for Lessees:
Seaboard Coast Line Railroad Company
Louisville and Nashville Railroad Company

Its income after fixed charges and other deductions is transferred to Lessees. Income Account for the year 1977 shows.

NOTE (2) Rockton and Rion is a South Carolina Intrastate Carrier Only.

RAILWAY TAX ACCRUALS
Year Ending December 31, 1977

Railroad	Total Railway Tax Accruals	All U.S. Govt. Taxes	South Carolina Taxes
Clinchfield Railroad	\$ 5,518,000	\$ 3,110,000	\$ 78,000
Columbia, Newberry & Laurens	782,079	599,540	182,539
Greenville & Northern Railway	30,191	25,154	10,078
Hampton & Branchville Railroad	45,284	27,005	12,304
Lancaster & Chester Railroad	99,862	64,771	156
Norfolk Southern Railway	2,737,000	2,086,000	28,000
Pickens Railroad	104,382	26,110	46,259
Rockton & Rion Railway	273	—0—	272
Seaboard Coast Line Railroad	65,975,000	48,984,000	2,160,000
Southern Railway	63,480,000	45,971,000	2,210,000
Ware Shoals Railroad	4,002	—0—	4,002

U. S. Government Taxes include income, old age, retirement, unemployment, insurance and other United States Taxes.

South Carolina Taxes include income, property, sales, gross receipts, and license taxes.

**MILEAGE OF ROAD OPERATED IN
SOUTH CAROLINA**

(Single or First Main Track)

Year Ending December 31, 1977

Name of Railroad	Number of Miles
Olinchfield Railroad Co.	18.02
Columbia, Newberry & Laurens Railroad Co.	75.00
Greenville & Northern Railway Co.	14.00
Hampton & Branchville Railroad Co.	17.00
Lancaster & Chester Railroad Co.	28.99
Norfolk Southern Railway Co.	58.46
Pickens Railroad Co.	9.30
Rockton & Rion Railway Co.	12.00
Seaboard Coast Line Railroad Co.	1,729.00
Southern Railway Co.	992.13
Ware Shoals Railroad Co.	5.17
Total	2,959.07

**MILES OF ROAD AND YARD SWITCHING TRACKS
(All Tracks)**

Year Ending December 31, 1977

TERMINAL COMPANIES

Name of Terminal Company	Number of Miles
North Charleston Terminal Company	19.00
South Carolina Public Railways Commission	10.99
Total	29.99

RAILROAD COMPANIES OPERATING IN SOUTH CAROLINA

Year Ending December 31, 1977

Line Haul Companies	Principal Officers	Official Address
Clinchfield Railroad Company	T. D. Moore, Jr., General Manager	Erwin, Tennessee
Columbia, Newberry & Laurens Railroad Company	Prime F. Osborn, President	Jacksonville, Florida
Greenville & Northern Railway Company	M. P. Silver, President	Boston, Massachusetts
Hampton & Branchville Railroad Company	W. Norris Lightsey, President	Hampton, South Carolina
Lancaster & Chester Railroad Company	J. B. Bethea, Jr., President	Lancaster, South Carolina
Norfolk Southern Railway Company	L. S. Crane, President	Washington, D. C.
Pickens Railroad Company	Jane Gillespie, President	Pickens, South Carolina
Rockton & Bion Railway Company	D. B. Wendling, President	Rockville, Maryland
Seaboard Coast Line Railroad Company	Prime F. Osborn, President	Richmond, Virginia
Southern Railway Company	L. S. Crane, President	Washington, D. C.
Ware Shoals Railroad Company	K. E. Wilber, President	Ware Shoals, South Carolina
Terminal Companies		
South Carolina Public Railways Commission	W. J. Betz, General Manager	Charleston, South Carolina
North Charleston Terminal Company	Henry R. Moore, President	Atlanta, Georgia

REGISTRATION DEPARTMENT

Registration of Certificated and Exempt Commodity Interstate Motor Carriers

(Public Law 89-170 — Section 58-1444)

On April 16, 1971, the South Carolina Motor Vehicle Carrier Law was amended by adding Section 58-1444 governing the operation of interstate carriers certificated by the Interstate Commerce Commission and exempt commodity carriers. Section 58-1444 authorized the South Carolina Public Service Commission to promulgate rules and regulations pursuant to this Act. The Rules promulgated complied with the standards as recommended and approved by the National Association of Regulatory Utility Commissioners and the Interstate Commerce Commission.

Carriers coming under this category are charged a registration fee of \$25.00, any amendment to the authority as registered \$10.00. Mobile Home Transporters are charged one-half the amendment fee or \$5.00. All trucks operating into or through South Carolina under Section 58-1444 must purchase an identification stamp at \$1.00 per truck.

Under the same Section, all exempt commodity carriers operating into or through South Carolina must file a letter with this Commission setting forth the exempt commodities to be transported. These fees are identical to those of Certificated carriers. All funds derived from such fees and charges are to be retained by the Commission and expended by it to control and police illegal transportation and promote safety on the highway.

During the period of July 1, 1977, through June 30, 1978, 281 Certificated carriers registered their authority with this Commission. Prior registrants were 2,094 making a total of 2,375 registered Certificated carriers. There were 623 registrants of additional authority with this Commission. For the same period 1,776 Exempt

carriers registered their letters of exemption. Prior registrants were 9,965 making a total of 11,741 registered Exempt carriers.

Balance From Previous Years	\$211,655.54
Revenues From Certificated Carriers	\$251,416.00
Revenues From Exempt Carriers	\$ 71,734.00
Total Revenue from 7-1-77 through 6-30-78	\$323,150.00
<hr/>	
Total	\$534,805.54
Expenditures this Division	\$336,596.36
<hr/>	
Balance carrier forward to 1977-1978	\$198,209.18

The enforcement of this Law and check of all trucks on the road for safety purposes are done by Inspectors in the field.