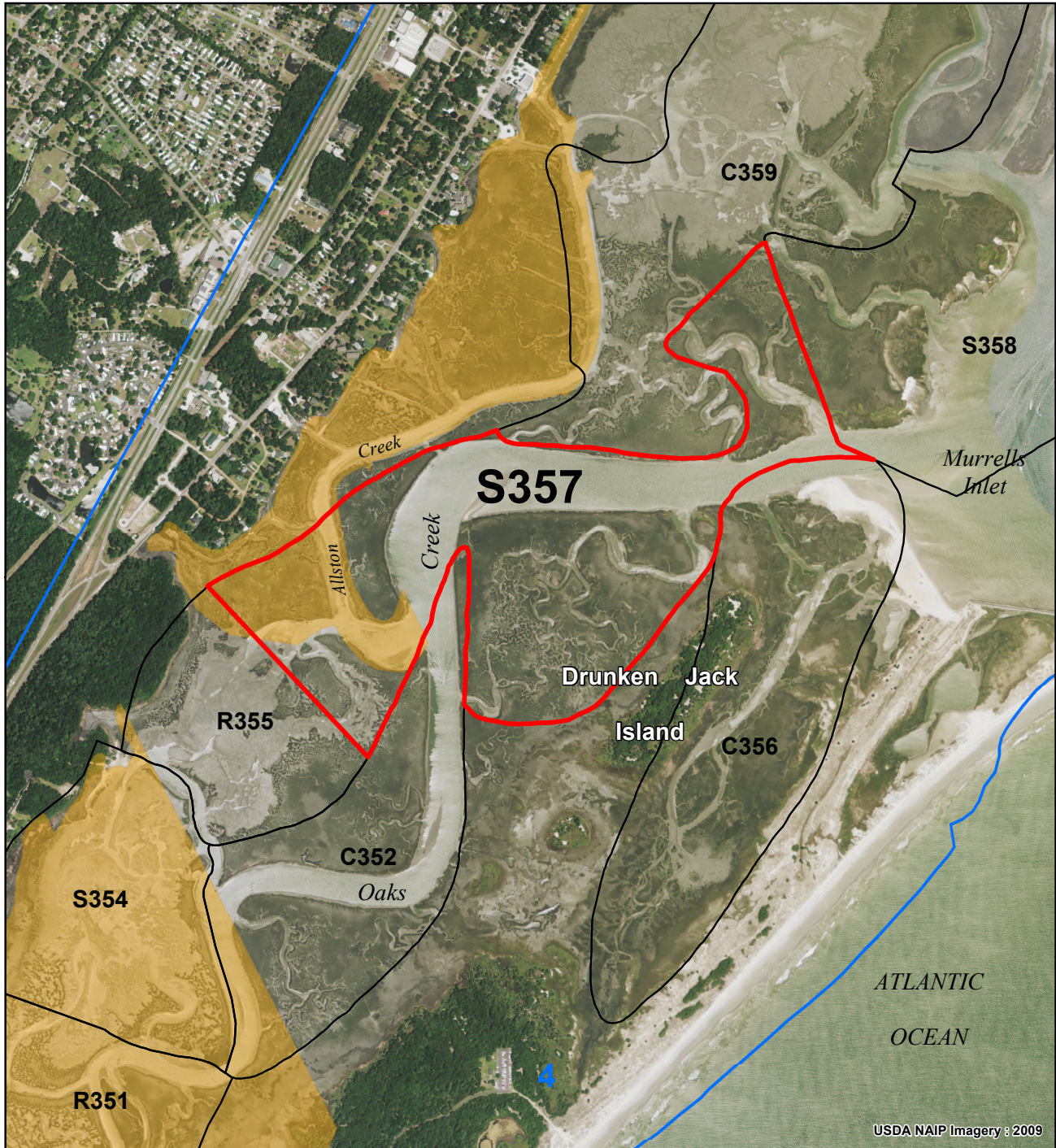


# Drunken Jack Island S357

S357 is within SCDHEC Shellfish Management Area 4. These areas are subject to closure at any time. Please call (800)285-1618

**SHELLFISH SEASON**  
2011 - 2012



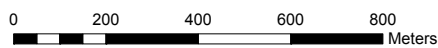
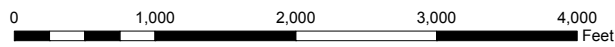
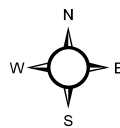
## Legend

### SHELLFISH HARVEST BOUNDARIES

- AREA OF INTEREST
- NEIGHBORING AREAS
- C000 = COMMERCIAL CULTURE PERMIT
- R000 = RECREATIONAL SHELLFISH GROUND
- S000 = STATE SHELLFISH GROUND
- SHELLFISH MANAGEMENT AREAS (SCDHEC)

### WATER QUALITY (SCDHEC)

- PROHIBITED
- RESTRICTED
- CONDITIONALLY APPROVED



Location: Portions of Oaks Creek,  
and Allston Creek  
County: Georgetown



PRODUCED BY:  
SOUTH CAROLINA DEPARTMENT OF NATURAL RESOURCES  
OFFICE OF FISHERIES MANAGEMENT  
SHELLFISH MANAGEMENT SECTION  
08/2011