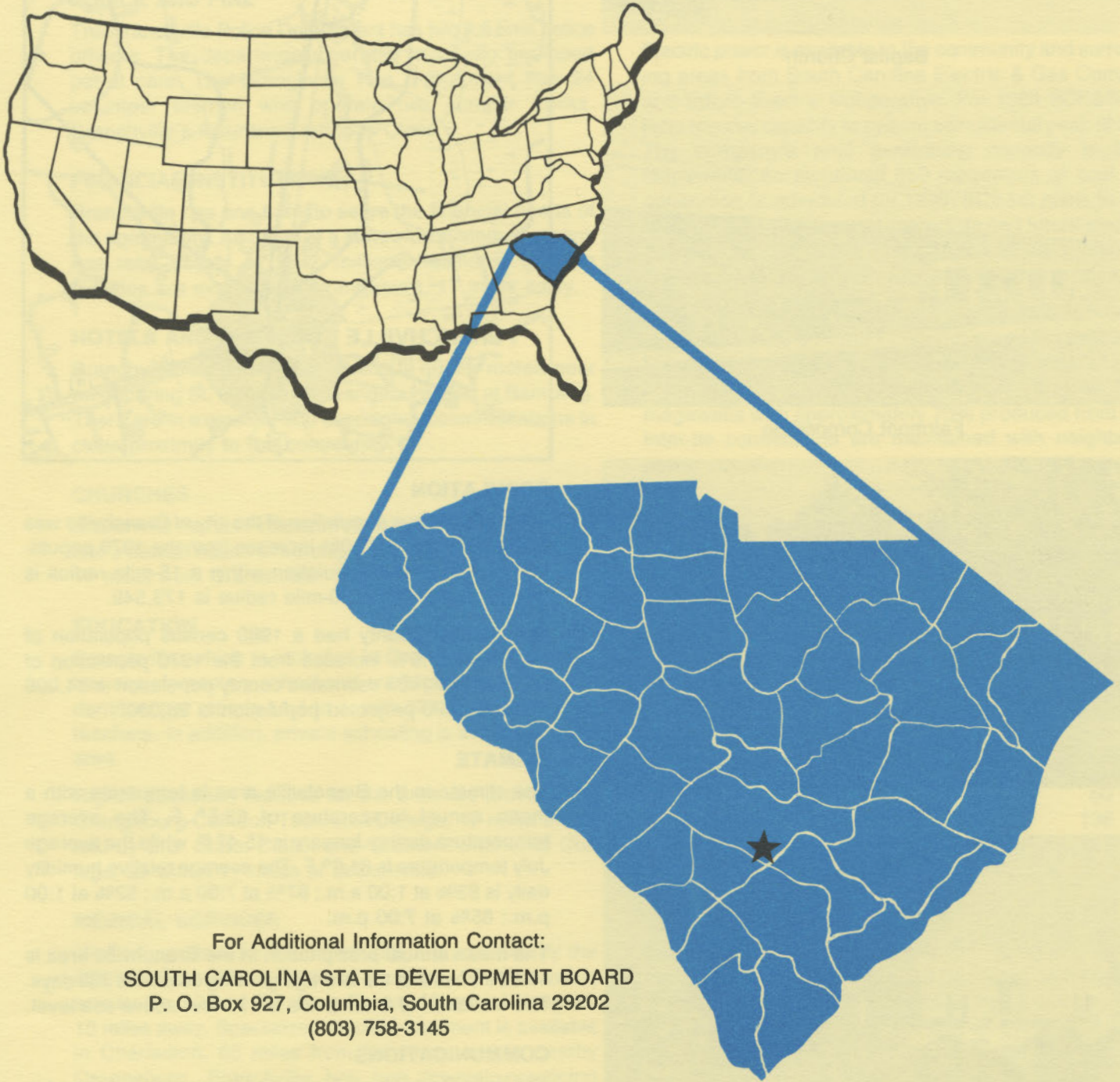


D4925
a.B61
1984
Copy 1

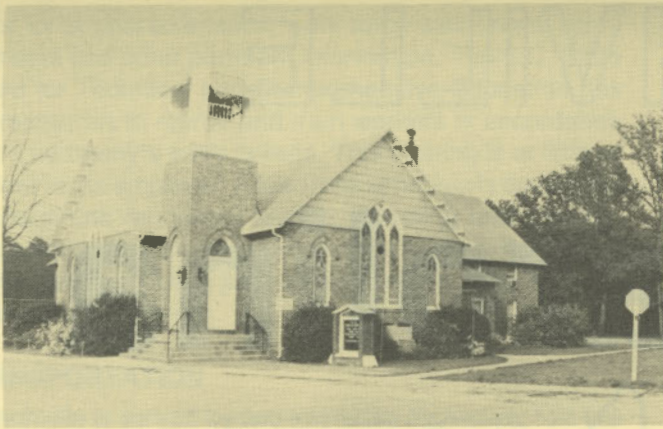
BRANCHVILLE

south carolina



For Additional Information Contact:
SOUTH CAROLINA STATE DEVELOPMENT BOARD
P. O. Box 927, Columbia, South Carolina 29202
(803) 758-3145

S. C. STATE LIBRARY
OCT 3 0 1984
STATE DOCUMENTS



Baptist Church



Fairmont Corporation



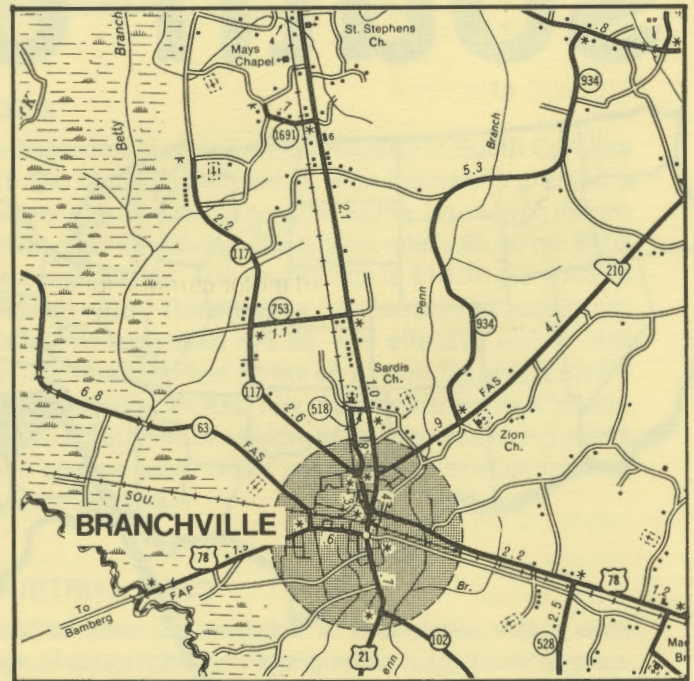
Residential Area



EG&G Rotron, Inc.

LOCATION

As depicted on the cover, Branchville is located in the southcentral section of the state in Orangeburg County. Charleston, South Carolina's busiest port, is 65 miles southeast. Columbia is 57 miles north, and Greenville is 157 miles northwest. Branchville is 234 miles east of Atlanta; 749 miles south of New York; and 2,757 miles east of San Francisco.



POPULATION

The 1980 census population of the city of Branchville was 1,769. This was a 75.0% increase from the 1970 population of 1,011. The population within a 15-mile radius is 38,576 and within a 30-mile radius is 173,549.

Orangeburg County had a 1980 census population of 82,276, a 17.9% increase from the 1970 population of 69,789. The 1983 estimated county population is 84,006 and the 1990 projected population is 98,000.

CLIMATE

The climate in the Branchville area is temperate with a mean annual temperature of 63.5° F. The average temperature during January is 45.4° F, while the average July temperature is 81.2° F. The average relative humidity daily is 83% at 1:00 a.m.; 87% at 7:00 a.m.; 52% at 1:00 p.m.; 65% at 7:00 p.m.

The mean annual precipitation in the Branchville area is 46.36 inches and the average growing season is 235 days. The elevation of Branchville is 121 feet above sea level.

COMMUNICATIONS

The daily *Orangeburg Times and Democrat*, published in Orangeburg, serves Branchville. Four other dailies circulate in the town. Six AM and four FM radio stations are within a 20-mile radius of the town. Television reception in the community is available from seven stations, representing the three major networks, educational television and cablevision. Telephone service in the communi-

ty is provided by the United Telephone Company of the Carolinas, Inc.

GOVERNMENT

The community has a council form of municipal government. The six city council members and the mayor are elected for four-year terms. Orangeburg County is governed by an administrator and a seven-member council whose members are elected for two-year terms. The administrator is appointed by the council.

POLICE AND FIRE

The Branchville Police Department has two full-time police officers. The department operates two radio equipped patrol cars. The Branchville Fire Department has 24 volunteer firemen who operate two pumper trucks. Branchville's insurance rating is Class 8.

FINANCIAL INSTITUTIONS

Branchville has one bank to serve the financial needs of the community. An office of a statewide system, the bank has total assets of \$842 million. Additional banking facilities are available in Orangeburg, 17 miles away.

HOTELS AND MOTELS

Branchville has convenient access to quality motels near neighboring St. George, at Orangeburg, and at Bamberg. There are in excess of 900 overnight accommodations in close proximity to the community.

CHURCHES

Branchville has six Protestant churches. A Catholic church and a Jewish house of worship are located in Orangeburg, 17 miles from Branchville.

EDUCATION

Branchville, which is included in Orangeburg District 8, has one elementary school and one high school. The student/teacher ratio is 14.4 to 1, with 574 students and 40 teachers. In addition, private schooling is available in the area.

Higher education facilities for the area are provided by Orangeburg-Calhoun Technical College, 17 miles away, and by S.C. State, Claflin and Southern Methodist College, all within 17 miles of Branchville.

MEDICAL SERVICES

Medical services for the community are provided by the 286-bed Orangeburg Regional Hospital, 17 miles away, and by the 59-bed Bamberg County Memorial Hospital, 15 miles away. Specialized medical treatment is available in Charleston, 65 miles from the town, and in nearby Orangeburg. Branchville has one privately-practicing medical doctor. Orangeburg has an additional 66 privately-practicing medical doctors and 21 privately-practicing dentists.

RECREATION AND CIVIC FACILITIES

Recreation facilities in the community consist of two

playgrounds, a recreation center and combination football and baseball field. A railroad shrine museum is also located in the community. Santee State Park, 30 miles away on Lake Marion, has facilities for camping, fishing, boating, sailing and water skiing. Golf is available in Orangeburg, 17 miles away, with two 18-hole golf courses. Bowman Country Club, 10 miles away, has a nine-hole golf course. Deer, quail, dove and duck hunting are popular pastimes for hunters in the area, as well as fishing in the adjoining Edisto River.

POWER

Electric power is available to the community and surrounding areas from South Carolina Electric & Gas Company and Edisto Electric Cooperative. For 1984 SCE&G projects reserve capacity to system coincidental peak of 32%. The company's total generating capacity is 3,959 megawatts. An additional 550 megawatts of coal fired generation is scheduled for 1989. SCE&G plans to have sufficient reserves to meet immediate and future electrical needs of its service area. In addition SCE&G maintains inter-tie connections with four neighboring utilities.

Electric power for Edisto Electric Cooperative is supplied by Central Electric Power Cooperative and South Carolina Public Service Authority. The generation capacity of plants in operation or under construction totals over 3,000 megawatts with approximately 73% produced from coal. Inter-tie connections are maintained with neighboring power supplies.

WATER

The community obtains its municipal water supply from two wells. The system is capable of supplying water at a maximum rate of 302,000 gallons per day, with an average daily demand of 133,000 gallons. Treated water storage consists of 75,000 gallons in elevated storage and 100,000 gallons in ground storage.

Analysis of water supplied in the community:

Total solids	N/A
Alkalinity	139 mg/L
Calcium	50 mg/L
Hardness	136 mg/L
Iron	0.1 mg/L
pH	7.5

SEWER

Branchville uses a six-acre oxidation pond to dispose of the community's wastewater. It is located on a stream of the Edisto River basin. The system has a design capacity of 150,000 gallons per day, with an average daily flow of 60,000 gallons.

LABOR

Because labor information may change in this area, a current labor availability report prepared and kept up to date by the S.C. State Development Board will be furnished to prospective manufacturers at their request. The comprehensive report will include sources of recruitable labor,

labor force characteristics, work force skill levels, earnings data and other pertinent information. The S.C. State Board for Technical and Comprehensive Education has the resources to recruit and train workers in accordance with a company's entry criteria. This training is at little or no cost to the employer. A lead time schedule is developed to coordinate recruiting, testing, selecting and training. This assures that persons will be able to move from training to their respective jobs at the time the plant is ready for initial production.

TRANSPORTATION

Branchville is served by two interstate highways, I-26 (16 miles) and I-95 (15 miles), two United States highways and one South Carolina highway. The community is served by one railroad, Norfolk Southern Railroad Corporation. Branchville is served by 23 authorized motor carriers, four of which have terminal facilities in nearby Orangeburg.

Freight Delivery Times:

To:	By Rail:	By Truck:
Atlanta	2 days	1 day
Baltimore	3 days	3 days
Chicago	4 days	3 days
Houston	6 days	3 days
New York	4 days	4 days
St. Louis	4 days	4 days
San Francisco	6 days	5 days

The Columbia Metropolitan Airport, 52 miles from the community, offers regularly scheduled commercial airline service on Delta, Eastern, United, Bankair and Piedmont. Private aircraft utilize the Orangeburg Airport, 17 miles away, which has a paved and lighted 4,500-foot runway. Services available at the Orangeburg Airport are RBn, major airframe and major powerplant repairs, 100LL and Jet A fuel, and Unicom.

MAJOR EMPLOYERS

Name	Product or Service	Employees
Applied Engineering Co.	Hydrocarbon process systems	300
EG&G Rotron, Inc.	Muffin fans	319
Ethyl Corp.-Orangeburg Div.	Organic chemicals	460
Fairmont Corp.	Boys' jackets	150
Greenwood Mills (2 plants)	Dyeing and finishing fabrics	900
Hughes Aircraft-South Carolina	Airborne radar systems	150
Kirsch Window Treatments	Window coverings	201
Roper Outdoor Products	Lawn mowers	1,000
Utica Tool Company	Hand tools	500

FOREIGN TRADE ZONE

A Foreign Trade Zone is located in Summerville, South Carolina, 25 miles from the Port of Charleston and 40 miles from the community. The Foreign Trade Zone allows manufacturers to store, manufacture, or process goods without paying U. S. Customs duties or worrying about quota compliance. This Foreign Trade Zone is served by a multimode transportation network which provides excellent accessibility to market areas.

TAXES

The assessment on industrial property in South Carolina is 10.5% of the market value. New industry is granted a five-year moratorium on general county taxes (with the exception of school taxes). The city tax rate is \$5.30 per \$100 of assessed value. The county rate is \$16.70 per \$100 of assessed value. The effective city tax rate (tax liability per \$100 of market value) is \$.56. The effective county rate is \$1.75. The state has no tax on a manufacturer's inventories, goods-in-process, raw materials or finished goods. Treatment facilities or equipment of manufacturing plants which control water or air pollution are exempt from all property taxation.

INDUSTRIAL SITES

Industrial sites are available in Branchville with a wide range of geographic and topographic features. In all probability, a site that will meet the needs of most industries' requirements has been identified, catalogued, and entered into the State Development Board's Computerized Site Selection System. Detailed site information is available and will be furnished upon request.

