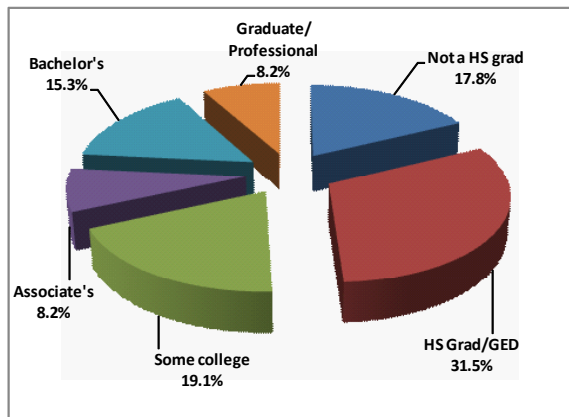


EDUCATIONAL ATTAINMENT IN SC

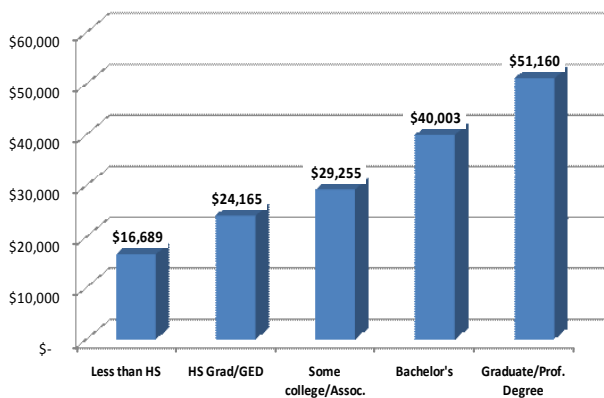
Over 19% of S.C. residents in 2009 had some college education, while a little over 8% had an Associate's (two-year) degree.



THE MORE YOU LEARN, THE MORE YOU EARN!

According to the U.S. Bureau of the Census, someone with a Bachelor's Degree will earn \$23,380 more per year than someone with less than a high school diploma.

Effect of Education on Wages in SC, 2009



Source: 2008 American Community Survey, Table S1501

This brochure provides an overview of some of the most promising jobs in South Carolina. General education requirements and wages are given for each job title listed. It is also important to look at jobs that are showing declining growth. Although declining jobs will provide some employment opportunities, job prospects are generally less positive than for growing jobs.

A major key to success in career planning is a review of the education, training, and experience requirements of jobs you are interested in. It is also important to consider jobs that currently employ a large number of people, along with those whose employment is expected to grow. Occupations in these two groups generally offer the best job opportunities.

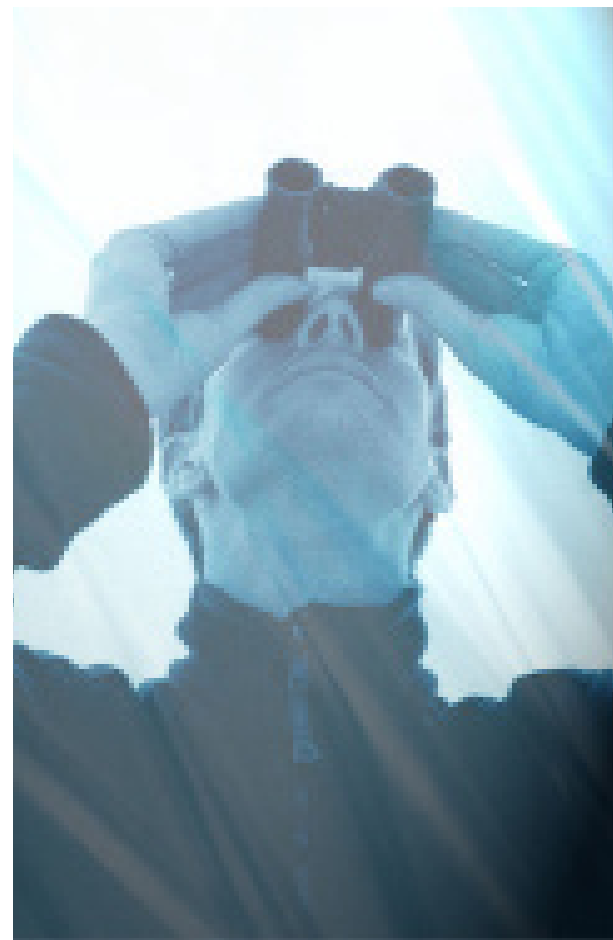
These jobs were selected based on the employment outlook over a ten-year period (2008-2018). Only jobs with a significant level of projected annual openings were included in the lists. Information on average pay is derived from the SC Occupational Employment Statistics Wage Survey.

This information should be supplemented with information from a wide variety of other sources, including career counselors in schools, Workforce Centers, and private companies. Good luck in your career search!

SC DEPARTMENT OF
EMPLOYMENT AND WORKFORCE
LABOR MARKET INFORMATION
P.O. Box 995, COLUMBIA, SC 29202
800-205-9290, 803-737-2660
WWW.DEW.SC.GOV/ABOUT-LMI.ASP

FEBRUARY 2011

SOUTH CAROLINA JOB OUTLOOK



SC DEPARTMENT OF
EMPLOYMENT AND WORKFORCE
LABOR MARKET INFORMATION
WWW.DEW.SC.GOV/ABOUT-LMI.ASP
803-737-2660
1-800-205-9290

OF THE TOP 50 OCCUPATIONS WITH THE MOST OPENINGS IN SOUTH CAROLINA BETWEEN 2008 AND 2018, THIRTY-FIVE REQUIRE ON-THE-JOB TRAINING OR PRIOR WORK EXPERIENCE. FIFTEEN REQUIRE FORMAL TRAINING BEYOND HIGH SCHOOL.

JOBS THAT REQUIRE UP TO 2 YEARS OF EDUCATION BEYOND HIGH SCHOOL

<i>Job Title</i>	<i>Avg. Hourly Pay (\$)</i>
Nursing Aides, Orderlies & Attendants	10.14
Heating, A/C & Refrigeration Mechanics/Installers.....	17.56
Real Estate Sales Agents	22.51
Fitness Trainers & Aerobic Instructors.....	14.94
Registered Nurses.....	28.69
Licensed Practical & Licensed Vocational Nurses.....	18.01
Dental Hygienists	26.67

JOBS THAT REQUIRE A HIGH SCHOOL DIPLOMA/ GED, ON-THE-JOB TRAINING OR WORK EXPERIENCE

<i>Job Title</i>	<i>Avg. Hourly Pay (\$)</i>
Combined Food Prep & Serving Workers, Including Fast Food	8.12
Maintenance & Repair Workers.....	16.76
Landscaping & Groundskeeping Workers.....	10.96
Retail Salespersons.....	11.28
Office Clerks, General	11.86
Security Guards.....	12.75
Pharmacy Technicians.....	12.21
Truck Drivers, Heavy & Tractor Trailer	17.68
Medical Assistants	13.66
Teacher Assistants.....	9.09
Customer Service Representatives	14.13
Medical Secretaries	13.45
Bookkeeping, Accounting, & Auditing Clerks.....	15.24
Dental Assistants	15.35
Receptionists & Information Clerks	11.89
Janitors & Cleaners	9.83
Bill & Account Collectors.....	13.73
Construction Laborers	13.02

JOBS THAT REQUIRE AT LEAST 4 YEARS OF EDUCATION AFTER HIGH SCHOOL

<i>Job Title</i>	<i>Avg. Hourly Pay (\$)</i>
Middle School Teachers, Except Special & Vocational Education.....	22.20
Elementary School Teachers, Except Special Education	21.78
Management Analysts	33.74
Teachers & Instructors, All Other	16.58
Network Systems & Data Communications Analysts	30.15
Accountants and Auditors.....	27.09
Secondary School Teachers, Except Special & Vocational Education	23.09
Pharmacists.....	51.94

DECLINING JOBS

<i>Job Title</i>	<i>Avg. Hourly Pay (\$)</i>
Textile Winding/Twisting/Drawing Machine Setters/ Operators/Tenders.....	12.16
General Managers.....	46.97
Door-to-Door Sales Workers, News/Street Vendors	12.36
File Clerks.....	10.78
Mail Sorters/Processors/Machine Operators.....	22.36
Order Clerks	13.28
Shipping, Receiving & Traffic Clerks	13.49
Farmworkers, Farm & Ranch Animals.....	11.32
Supervisors of Production/Operating Workers	26.32
Cutting/Punching/Press Machine Setters/ Operators/Tenders.....	14.89