

D4925
2.E77

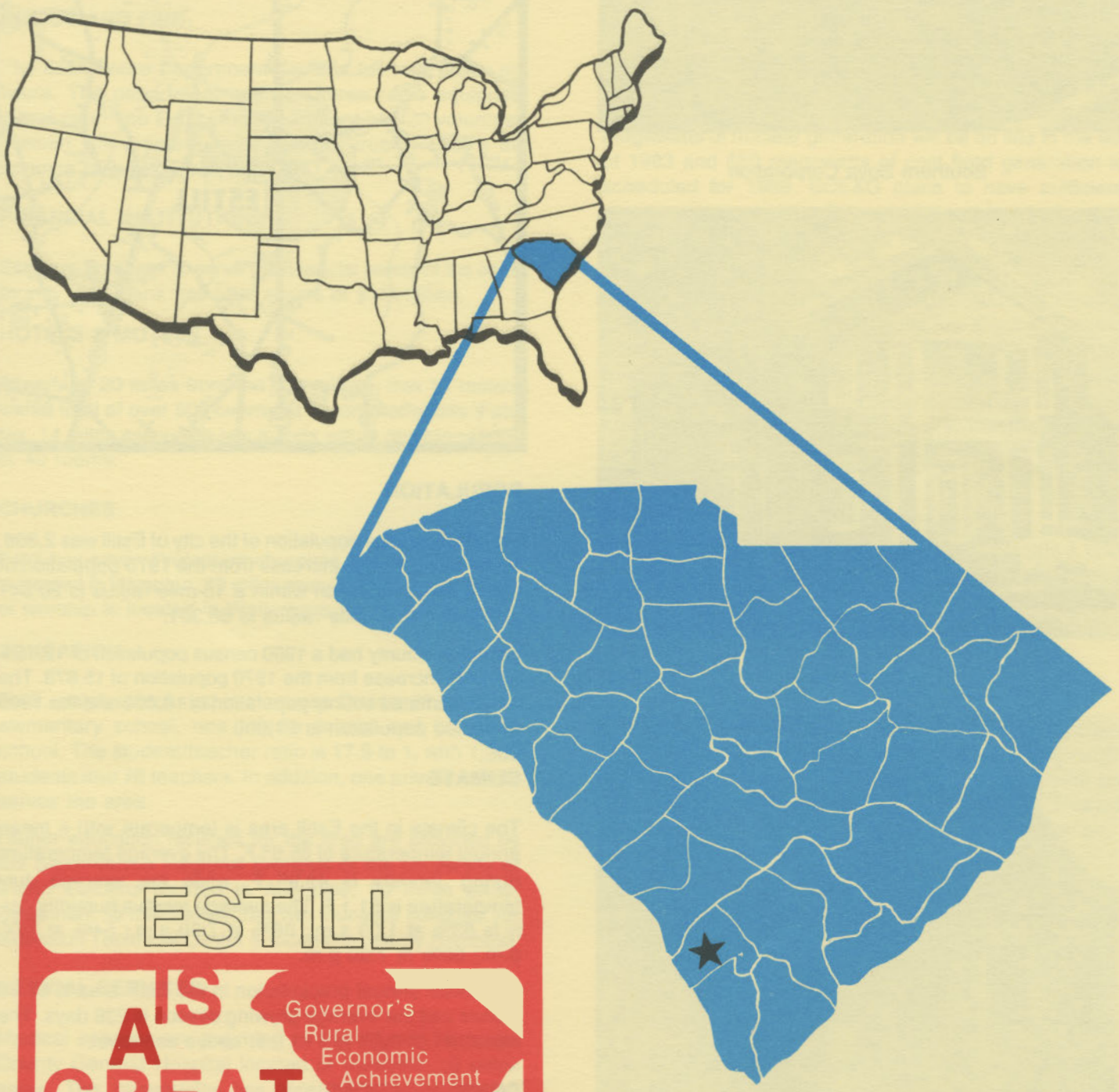
S. C. STATE LIBRARY

AUG 18 1983

STATE DOCUMENTS

ESTILL

south carolina

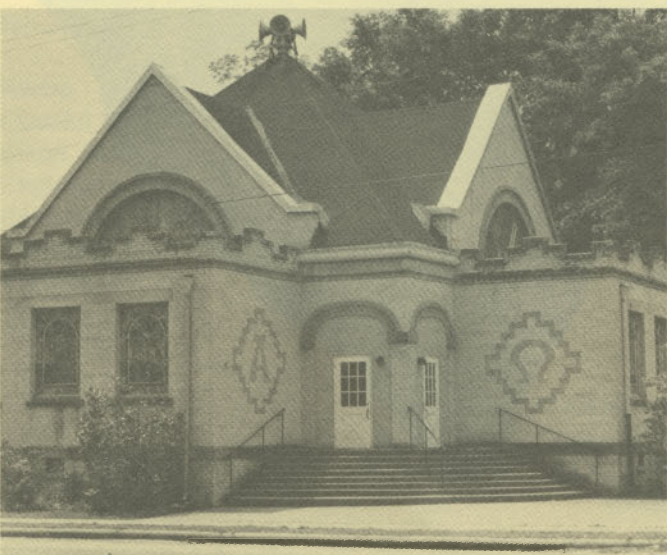




Southern Soya Corporation



Town Hall



Lautonville Baptist Church

LOCATION

As depicted on the cover, Estill is in the southern section of the state in Hampton County. Charleston, South Carolina's busiest port, is 75 miles east. Columbia is 78 miles north and Greenville is 187 miles northwest. Estill is 238 miles east of Atlanta; 787 miles south of New York; and 2,761 miles east of San Francisco.



POPULATION

The 1980 census population of the city of Estill was 2,308. This was an 18.1% increase from the 1970 population of 1,954. The population within a 15-mile radius is 20,841 and within a 30-mile radius is 68,301.

Hampton County had a 1980 census population of 18,159, a 14.4% increase from the 1970 population of 15,878. The 1981 estimated county population is 18,600 and the 1990 projected population is 21,000.

CLIMATE

The climate in the Estill area is temperate with a mean annual temperature of 65.9° F. The average temperature during January is 49.9° F, while the average July temperature is 81.1 F. The average relative humidity daily is 83% at 1:00 a.m.; 86% at 7:00 a.m.; 54% at 1:00 p.m.; 68% at 7:00 p.m.

The mean annual precipitation in the Estill area is 51.15 inches and the average growing season is 238 days. The elevation of Estill is 113 feet above sea level.

COMMUNICATIONS

One weekly, the *Hampton County Guardian*, is published in Hampton, 13 miles away, and three large dailies circulate in the community. WBHC and WJBW-FM, also at Hampton, provide broadcast coverage for the area. Televi-

sion reception is available from 10 stations, representing the three major networks and educational television. Telephone service is provided by the United Telephone Company of the Carolinas.

GOVERNMENT

The community has a mayor-council form of municipal government. The four city council members and the mayor are elected for four year terms. Hampton County is governed locally by a council-administrator form of government whose five members are elected for four year terms.

POLICE AND FIRE

The Estill Police Department has four full-time police officers. The department operates three radio equipped patrol cars. The Estill Fire Department has 20 volunteer firemen who operate three pumper trucks. Estill's insurance rating is Class 7.

FINANCIAL INSTITUTIONS

Estill has one bank to serve the financial needs of the community. The bank has total assets of \$15 million.

HOTELS & MOTELS

Allendale, 20 miles from the community, has 11 motels with a total of over 500 overnight accommodations. Fairfax, 14 miles away, has two motels with a combined total of 40 rooms.

CHURCHES

Estill has seven Protestant churches. A Catholic church is located in Hampton, 13 miles away, and a Jewish house of worship is located in Walterboro, 40 miles away.

EDUCATION

Estill, which is included in Hampton District #2, has one elementary school, one middle school and one high school. The student/teacher ratio is 17.6 to 1, with 1,369 students and 78 teachers. In addition, one private school serves the area.

Higher education facilities for the area are provided by the Salkehatchie Regional Campus of the University of South Carolina located in Allendale, 20 miles away. Savannah, 55 miles away, has two four-year colleges. An extension Technical Center is located in nearby Hampton.

MEDICAL SERVICES

Medical services are provided by the 68-bed Hampton County General Hospital located at Varnville, 10 miles away. The community has three privately-practicing medical doctors, and one privately-practicing dentist.

RECREATION AND CIVIC FACILITIES

Recreation facilities consist of a football field, baseball dia-

mond and lighted tennis courts. The Savannah River, 10 miles away, provides areas for hunting, fishing, boating, camping, and picnicking. A nine-hole golf course is located at Fairfax, 14 miles away; and the Hampton County Country Club, 12 miles away, has an 18-hole golf course and a swimming pool. Lake Warren, five miles away, has excellent fishing and picnic facilities. A picnic area with a pool and dance pavilion is located within six miles. Estill is within an hour's drive of several coastal resort communities.

POWER

Electric power is supplied by South Carolina Electric & Gas Company. For 1983 SCE&G projects reserve capacity to system coincidental peak of 33%. The company's total generating capacity is 3,359 megawatts. An additional 600 megawatts of nuclear generation will be on line in the fall of 1983 and 550 megawatts of coal fired generation is scheduled for 1989. SCE&G plans to have sufficient reserves to meet immediate and future electrical needs of its service area. In addition, SCE&G maintains inter-tie connections with four neighboring utilities.

Electric power is also available from Palmetto Electric Cooperative. Power is generated by Central Electric Cooperative and South Carolina Public Service Authority. The generation capacity of plants in operation or under construction totals 3,435 megawatts with 73% produced from coal. Inter-tie connections are maintained with neighboring power supplies.

FUELS

Natural gas is supplied by South Carolina Electric & Gas Company. SCE&G representatives are available to assist and advise industry on matters relating to natural gas for industrial application.

WATER

The community obtains its municipal water supply from five deep wells. The system is capable of supplying water at a maximum rate of 972,000 gallons per day, with an average daily demand of 100,000 gallons per day. Treated water storage is 100,000 gallons in overhead storage.

Analysis of water supplied in the community:

Total solids	NA
Alkalinity	130mg/L
Calcium	39mg/L
Hardness	160mg/L
Iron	.1mg/L
pH	7.4

SEWER

Estill uses three cell lagoons; two are aerated cells and one is an unaerated cell with effluent chlorination. The total capacity is 3,542,500 gallons. The design flow is 250,000 gallons with a minimum flow of 100,000 gallons and a peak flow of 500,000 gallons.

LABOR

Because labor information may change in this area, a current labor availability report prepared and kept up to date by the S.C. State Development Board will be furnished to prospective manufacturers at their request. The comprehensive report will include sources of recruitable labor, labor force characteristics, work force skill levels, earnings data and other pertinent information. The S.C. State Board for Technical and Comprehensive Education has the resources to recruit and train workers in accordance with a company's entry criteria. This training is at little or no cost to the employer. A lead time schedule is developed to coordinate recruiting, testing, selecting, and training. This assures that persons will be able to move from training to their respective jobs at the time the plant is ready for initial production.

TRANSPORTATION

Estill is served by one interstate highway, I-95 (18 miles away), three United States highways and one South Carolina highway. The community is served by the Seaboard Systems Railroad. Estill has 19 authorized motor carriers serving the community.

Freight Delivery Times:

To:	By Rail:	By Truck:
Atlanta	3 days	1 day
Boston	6 days	4 days
Chicago	7 days	3 days
Houston	8 days	2 days
New York	4 days	3 days
St. Louis	5 days	2 days
San Francisco	11 days	5 days

The Savannah Municipal Airport, 55 miles away, offers regularly scheduled commercial airline service on Pan Am, Delta and Eastern Airlines. Private aircraft utilize the Hampton-Varnville Airport, 12 miles away, which has a

paved and lighted 3,580-foot runway. Services available at the airport are hangars, tiedowns, major airframe and major powerplant repairs, 100 LL and Jet A fuels, and Vortac.

FOREIGN TRADE ZONE

There is a Foreign Trade Zone in South Carolina, located in Charleston, 75 miles away. The Foreign Trade Zone allows manufacturers to store, manufacture or process goods without paying U.S. Customs duties or worrying about quota compliance. This Foreign Trade Zone is served by a multi-mode transportation network which provides excellent accessibility to market areas.

TAXES

The assessment on industrial property in South Carolina is 10.5% of the market value. New industry is granted a five-year moratorium on general county taxes (with the exception of school taxes). The city tax rate is \$5.70 per \$100 of assessed value. The county rate is \$9.60 per \$100 of assessed value. The effective city tax rate (tax liability per \$100 of market value) is \$.60. The effective county rate is \$1.01. The state has no tax on a manufacturer's inventories, goods-in-process, raw materials or finished goods. Treatment facilities or equipment of manufacturing plants which control water or air pollution are exempt from all property taxation.

INDUSTRIAL SITES

Industrial sites are available in Estill with a wide range of geographic and topographic features. In all probability, a site that will meet the needs of most industries' requirements has been identified, catalogued, and entered into the State Development Board's Computerized Site Selection System. Detailed site information is available and will be furnished upon request.

MAJOR EMPLOYERS

Name	Product or Service	Employees
Coastal Farms Inc.	Dehydrated grass for animal feed	37
Elliott Sawmilling Company	Lumber	53
Engineered Fibreglass Products	FPR lighting poles, hoods, vessels	30
Estill Manufacturing Co.	Uniforms	115
Southern Soya Corp.	Vegetable oil processing	24
Wyman Inc.	Fertilizer mixing	27

FOR ADDITIONAL INFORMATION CONTACT:
SOUTH CAROLINA STATE DEVELOPMENT BOARD
P.O. BOX 927, COLUMBIA, SOUTH CAROLINA 29202
(803) 758-3145

