

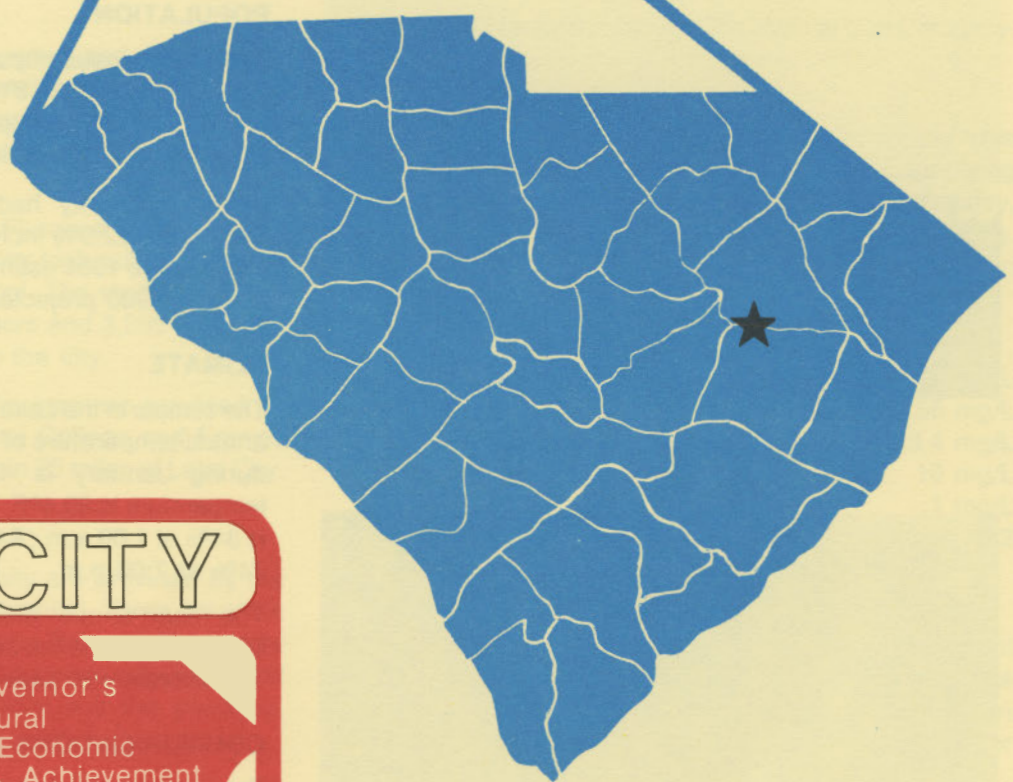
D4925  
2.214

# LAKE CITY

## south carolina

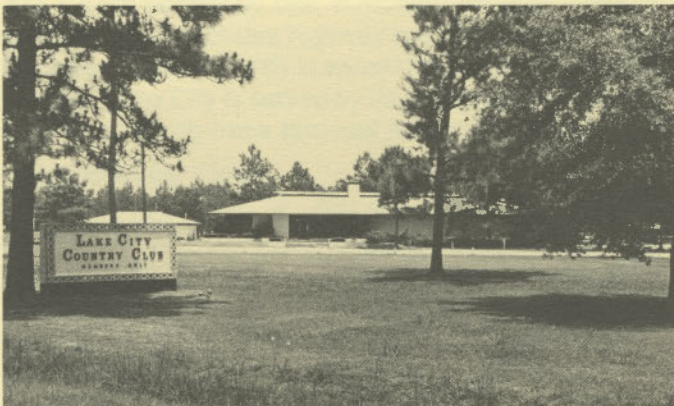


S. C. STATE LIBRARY  
FEB 13 1984  
STATE DOCUMENTS

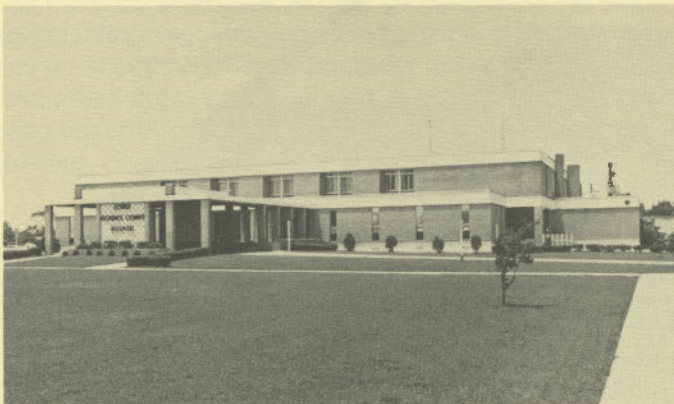




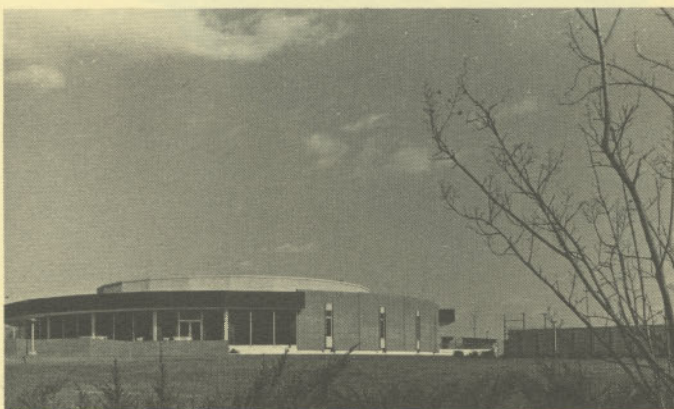
Lake City Plaza Shopping Center



Lake City Country Club



Lower Florence County Hospital



Florence-Darlington Technical College

## LOCATION

As depicted on the cover, Lake City is in the eastern section of the state in Florence County. Charleston, South Carolina's busiest port, is 89 miles south. Columbia is 76 miles west and Greenville is 176 miles northwest. Lake City is 289 miles east of Atlanta; 662 miles south of New York; and 2,812 miles east of San Francisco.



## POPULATION

The 1980 census population of the city of Lake City was 5,636. This was a 9.8% decrease from the 1970 population of 6,247. The population within a 15-mile radius is 58,301 and within a 30-mile radius is 217,989.

Florence County had a 1980 census population of 110,163, a 22.9% increase from the 1970 population of 89,636. The 1981 estimated county population is 110,900 and the 1990 projected population is 136,800.

## CLIMATE

The climate in the Lake City area is temperate with a mean annual temperature of 63.7°F. The average temperature during January is 46.5°F, while the average July temperature is 80.4°F. The average relative humidity daily is 84% at 1:00 a.m.; 84% at 7:00 a.m.; 57% at 1:00 p.m.; 74% at 7:00 p.m.

The mean annual precipitation in the Lake City area is 53.59 inches and the average growing season is 234 days. The elevation of Lake City is 70 feet above sea level.

## COMMUNICATIONS

One weekly, the *Lake City News and Post*, is published in the city, and four dailies circulate in the area. One AM radio station and one FM station have broadcast facilities in the city. Television reception in the community is available from six stations, representing the three major networks and educational television. Cable television ser-

vice is available. Telephone service in the community is provided by the General Telephone Company.

## GOVERNMENT

The community has a mayor-council form of municipal government. The six city council members and the mayor are elected for four-year terms. Florence County is governed locally by a council-administrator whose nine members are elected to four-year terms.

## POLICE AND FIRE

The Lake City Police Department has 15 full-time police officers. The department operates 5 radio equipped patrol cars. The Lake City Fire Department has six full-time and 29 volunteer firemen who operate five pumpers. Lake City's insurance rating is Class 6.

## FINANCIAL INSTITUTIONS

Lake City has three banks and two savings and loan associations to serve the financial needs of the community. The banks have total assets of \$2.9 billion, while the savings and loans have assets of \$83 million.

## HOTELS AND MOTELS

The community has one motel with a total of 30 overnight accommodations. Numerous other motel accommodations are located in Florence.

## CHURCHES

Lake City has 19 Protestant churches and one Catholic church located in the city. A Jewish house of worship is located in Kingstree, 16 miles away.

## EDUCATION

Lake City, which is included in Florence District 3, has three elementary schools, one junior high school, one high school, and one vocational school. The student/teacher ratio is 19.2 to 1, with 172 teachers and 3,295 students. Private schooling is available in the city.

Higher education facilities for the area are provided by the Florence-Darlington Technical College and Francis Marion College, both located within 25 miles of Lake City.

## MEDICAL SERVICES

Medical services in the community are provided by the 48-bed Lower Florence County Hospital. Three hospitals with a total of 566 beds are located in Florence, the county seat, 21 miles from Lake City. The community has eight privately-practicing medical doctors and five privately-practicing dentists.

## RECREATION AND CIVIC FACILITIES

The Lake City Country Club has an 18-hole golf course, swimming pool, tennis courts and clubhouse. Lake Marion and Lake Moultrie, both 45 miles away, provide areas for fishing, boating, camping, swimming and other water

sports. Florence County's woodlands and rivers provide a wide variety of game, fowl, and fish for sportsmen. Lake City is within an hour's drive of several coastal resort communities.

## POWER

Electric power is available to the community and surrounding areas from Carolina Power & Light Company (CP&L) and Santee Electric Cooperative. CP&L has firm generation capacity of 8000 megawatts and forecasts sufficient reserves to accommodate industrial growth in its service area. Economical power from nuclear energy accounts for a major portion of CP&L's generation and serves to keep the company's rates below the national average. Usually CP&L will install, at no cost to the customer, the necessary equipment to supply the electrical requirements. Alternative rate schedules are available to the industrial customer with the most economical rate for a specific application determined by the characteristics of the user's consumption.

Electric power for Santee Electric Cooperative is supplied by Central Electric Power Cooperative and South Carolina Public Service Authority. The generation capacity of plants in operation or under construction totals over 3,000 megawatts with approximately 73% produced from coal. Inter-tie connections are maintained with neighboring power supplies.

## FUELS

Natural gas is supplied by Carolina Natural Gas Company.

## WATER

The community obtains its municipal water supply from three deep wells. The system is capable of supplying water at a maximum rate of 1.38 million gallons per day, with an average daily demand of 1.0 million gallons. Treated water storage consists of 700,000 gallons in elevated tanks.

Analysis of water supplied in the community:

|              |          |
|--------------|----------|
| Total solids | 74 mg/L  |
| Alkalinity   | 56 mg/L  |
| Calcium      | 3.4 mg/L |
| Hardness     | 10 mg/L  |
| Iron         | .1 mg/L  |
| pH           | 8.2      |

## SEWER

Lake City utilizes a trickling filter wastewater treatment plant with primary and secondary clarifiers. The plant has a design capacity for 4.2 million gallons per day with an extended maximum capacity for 7.5 million gallons per day. The average daily flow is 2 million gallons.

## LABOR

Because labor information may change in this area, a current labor availability report prepared and kept up to date by the S. C. State Development Board will be furnished

to prospective manufacturers at their request. The comprehensive report will include sources of recruitable labor, labor force characteristics, work force skill levels, earnings data and other pertinent information. The S. C. State Board for Technical and Comprehensive Education has the resources to recruit and train workers in accordance with a company's entry criteria. This training is at little or no cost to the employer. A lead-time schedule is developed to coordinate recruiting, testing, selecting, and training. This assures that persons will be able to move from training to their respective jobs at the time the plant is ready for initial production.

**TRANSPORTATION**

Lake City is served by one interstate highway, I-95 (15 miles), one United States highway and two South Carolina highways. The community is served by Seaboard Systems Railroad. Lake City is served by 31 authorized motor carriers, 19 of which have terminal facilities in Florence.

**Freight Delivery Times:**

| To:           | By Rail: | By Truck: |
|---------------|----------|-----------|
| Atlanta       | 3 days   | 1 day     |
| Boston        | 6 days   | 4 days    |
| Chicago       | 6 days   | 3 days    |
| Houston       | 9 days   | 3 days    |
| New York      | 4 days   | 3 days    |
| St. Louis     | 6 days   | 2 days    |
| San Francisco | 12 days  | 5 days    |

The Florence Municipal Airport, 24 miles from the community, offers regularly scheduled commercial airline service on Atlantis and Trans Southern Airways. Private aircraft utilize the Lake City Airport, two miles away, which has a paved and lighted 3,000-foot runway and a terminal building. Services available at the Lake City Airport are

**MAJOR EMPLOYERS**

| Name                | Product or Service             | Employees |
|---------------------|--------------------------------|-----------|
| Carter Mfg. Co.     | Wooden containers              | 55        |
| George Anne Apparel | Ladies' loungewear             | 193       |
| T. S. Ragsdale, Inc | Processed tobacco and charcoal | 200       |
| Talon, Inc.         | Zippers                        | 179       |
| Yarn Industries     | Hand knitting yarn             | 75        |

tiedowns, Unicom, RBn, Abvortac and 100LL fuel. Other aviation services are available at Florence.

**FOREIGN TRADE ZONE**

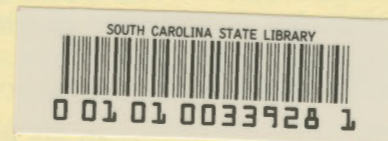
A Foreign Trade Zone is located in Summerville, South Carolina, 25 miles from the Port of Charleston and 64 miles from the community. The Foreign Trade Zone allows manufacturers to store, manufacture, or process goods without paying U.S. Customs duties or worrying about quota compliance. This Foreign Trade Zone is served by a multi-mode transportation network which provides excellent accessibility to market areas.

**TAXES**

The assessment on industrial property in South Carolina is 10.5% of the market value. New industry is granted a five-year moratorium on general county taxes (with the exception of school taxes). The city tax rate is \$9.73 per \$100 of assessed value. The county rate is \$9.14 per \$100 of assessed value. The effective city tax rate (tax liability per \$100 of market value) is \$1.02. The effective county rate is \$.94. The state has no tax on a manufacturer's inventories, goods-in-process, raw materials or finished goods. Treatment facilities or equipment of manufacturing plants which control water or air pollution are exempt from all property taxation.

**INDUSTRIAL SITES**

Industrial sites are available in Lake City with a wide range of geographic and topographic features. In all probability, a site that will meet the needs of most industries' requirements has been identified, catalogued, and entered into the State Development Board's Computerized Site Selection System. Detailed site information is available and will be furnished upon request.



For Additional Information Contact:

SOUTH CAROLINA STATE DEVELOPMENT BOARD  
 P. O. Box 927, Columbia, South Carolina 29202  
 (803) 758-3145