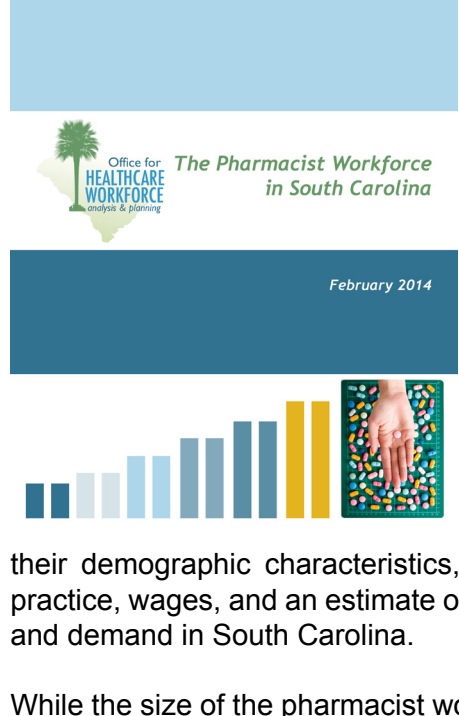


April 8, 2014

Inside This Issue

- South Carolina Pharmacist Workforce Report Now Available**
- AHEC U: Growing by Leaps and Bounds**
- ARIN Certification Review Course Coming to Lowcountry**
- Mid-Carolina HCA Student Accepted to Magnet Program**
- Join Pee Dee AHEC for Falls: Evaluation, Prevention and Treatment**
- Additional Housing Locations Available for Upstate Health Professions Students**
- Staff Volunteers Needed for Edisto Free Clinic**
- Workshop Helps Strengthen Communication for Deaf Patients in Medical Settings**

South Carolina Pharmacist Workforce Report Now Available



Pharmacists play an increasingly important role in our healthcare system. The traditional role of the pharmacist is expanding beyond the dispensary into a more active involvement in patient care as part of the healthcare team. Knowing the size and characteristics of the current pharmacist workforce in the state is valuable information for educators and policy makers concerned with ensuring an adequate supply of pharmacists for South Carolina. A new report entitled *The Pharmacist Workforce in South Carolina* provides a detailed description of the pharmacist workforce in the state, as well as information about how it has been changing in recent years. This report includes information about the number and type of pharmacists practicing in the state, their demographic characteristics, information about where and how much they practice, wages, and an estimate of the current balance between pharmacist supply and demand in South Carolina.

While the size of the pharmacist workforce grew by 13% from 2008 to 2012, annual rates of growth for the profession have been falling in both the number of licensed pharmacists and the number active in the South Carolina workforce. In addition, about 25% of the current pharmacist workforce is age 55 or older. Two new education programs have opened in the state in recent years, and their graduates will increase the number of new pharmacists entering the workforce each year. Whether these new graduates will be enough to offset the large number of pharmacists expected to retire in the next decade remains to be seen.

Changing population demographics and the ways in which pharmacists are engaged within the healthcare system are expected to increase the demand for pharmacists nationally and in South Carolina in the future. For example, prescription volume and the need for drug management services are much higher for senior citizens than any other age group. In South Carolina the population of people age 65 and older is increasing rapidly – by more than 100% between 2010 and 2030. In addition, pharmacists are beginning to play a key role in multi-disciplinary health care teams where they perform comprehensive drug therapy reviews, resolve medication related problems, optimize complex drug treatment regimens, design treatment adherence programs, and recommend cost-effective therapies. How these conflicting dynamics of pharmacist supply and increasing demand will play out over the next decade in South Carolina is unknown.

The *Pharmacist Workforce in South Carolina* report can be downloaded at no charge from the website of the Office for Healthcare Workforce Analysis and Planning: www.OfficeForHealthcareWorkforce.org.

The Office for Healthcare Workforce Analysis and Planning, part of the South Carolina Area Health Education Consortium at the Medical University of South Carolina, is funded by a grant from The Duke Endowment. Located in Charlotte, NC, the Duke Endowment seeks to fulfill the legacy of James B. Duke by improving lives and communities in the Carolinas through higher education, health care, rural churches and children's services. Since its inception, the Endowment has awarded nearly \$2.7 billion in grants.

[← Back to top](#)

Highlighted Events

Monday, April 14
SCHOOLS: Team-Based Care to Improve Blood Pressure Control: The CAPTION Trial

Wednesday, April 16
A Day in the Life of a Patient with Diabetes

Monday, April 21
Comprehensive Rehabilitation Nursing Course Theory and Application

Wednesday, April 23
SCHOOLS: TITAN HIV Case Conference

Friday, May 2
Preceptorship: Setting the Tone for "Excellence" in Healthcare

Monday, May 5
SCHOOLS: Can I Manage My Drinking or Do I Have to Quit?

[For more information about events and a full listing of upcoming programs, please visit our website.](#)

Featured Enduring CE

TITAN: HIV Case Conference
Available at SCHOOLS
<https://www.scahec.net/schoolsregistration/Videos.aspx>

Visit South Carolina AHEC Regional Centers

AHEC U: Growing by Leaps and Bounds

AHEC U has provided online distance learning since the web-based continuing education platform was established in 2010 by Upstate AHEC. AHEC U has grown to provide healthcare professionals with more than 135 classes online with more being added monthly. Currently, AHEC U has over 2,000 active users.

AHEC U offers classes to healthcare professionals on topics such as cultural competence, clinical competence, leadership, obstetrics, pediatrics, advanced practice nurses pharmacology, professional development, pharmacy, psychology and social work. AHEC U is also a venue for the South Carolina Leadership Education in Neurodevelopmental and Related Disabilities (LEND) program to offer their courses to healthcare professionals across the state at no charge.

AHEC U instructors may choose to record their classes through live presentations on the SCHOOLS network or via recording software at the Upstate AHEC offices. Recordings are uploaded into the online platform, then a pre-test, post-test and evaluation are added to the course program. After participants complete all components of the course online, they are able to print a certificate of completion for verification of credit to present to their corresponding professional board.

Distance learning is the wave of the future and South Carolina AHEC is ahead of the curve with AHEC U. Be sure to keep an eye on AHECConnects' newest feature "New To AHEC U" each month to see what new courses we add monthly.

For more information, please visit AHEC U at ahecu.org or contact Jennifer Walker, continuing education coordinator, at jwalker@upstateahec.org.

New to



*The Feasibility and Benefit of a Medical Legal Partnership
Lifting the Veil on Postnatal Depression
Clostridium Difficile
Healthcare Quality and Safety
So You Think You Know COPD*

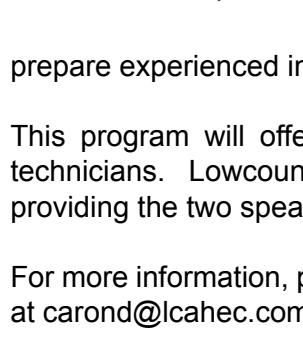
To view a program, visit ahecu.org.

[← Back to top](#)

Connect with us:



ARIN Certification Review Course Coming to Lowcountry



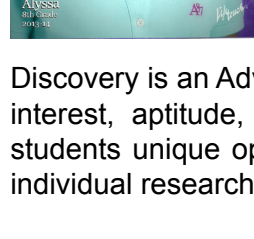
Lowcountry AHEC is offering a certification review course for the Association for Radiologic and Imaging Nursing (ARIN) on April 26-27 at Bon Secours St. Francis Hospital. The *ARIN Imaging Nurse Review Course* is a two-day course designed to provide an overview of the skills required for nurses working in the imaging, interventional, and therapeutic environments. This educational program will provide a review of selected topics that can help prepare experienced imaging nurses for the Radiology Nurse Certification Exam.

This program will offer 15.0 nursing hours and 17.0 ASRT hours for radiology technicians. Lowcountry AHEC is co-providing this program with ARIN, which is providing the two speakers for the program.

For more information, please contact Diana Caron, continuing education coordinator, at carond@lcahec.com.

[← Back to top](#)

Mid-Carolina HCA Student Accepted to Magnet Program



Mid-Carolina AHEC, Inc. Health Careers Academy is proud to announce that Alyssa Brunson was accepted into the Discovery Magnet Program at Spring Valley High School for the 2014-2015 school year.

Miss Brunson joined Mid-Carolina's Health Careers Academy as an eighth grade member in December 2013. She has made a profound impression on staff members through her confident, committed, and positive attitude toward herself and peers.

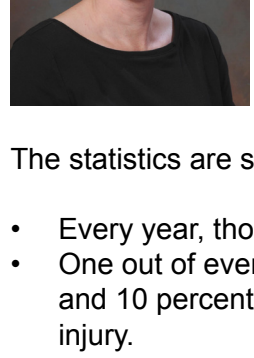
Discovery is an Advanced Placement/Honors program for students with motivation, interest, aptitude, and commitment to academic success. The program offers students unique opportunities in the fields of science and mathematics, including individual research projects with top labs and equipment.

With many outstanding students applying for the limited number of openings in the program, competition was keen. It entailed having an interview, submitting a writing sample, participating in a group interaction activity, and having high grades and test scores. Experiences in Discovery will put students on the leading edge for college admissions and scholarship competition.

Alyssa, congratulations on your accomplishments. Mid-Carolina AHEC is very proud of you!

[← Back to top](#)

Join Pee Dee AHEC for Falls: Evaluation, Prevention and Treatment



You've seen the commercials... "Help, I've fallen, and I can't get up!" We seem complacent with the advertisement, but a fall can be a catastrophic occurrence that dramatically changes lives. The fear of falling, residual pain, immobility, or decreased independence can remain with individuals who have fallen.

The statistics are sobering:

- Every year, thousands of older adults fall and hurt themselves.
- One out of every three Americans 65 years and older falls at least once a year and 10 percent fracture a bone, dislocate a joint or incur some other serious injury.
- Falls are one of the main causes of injury and loss of independence in people ages 65 and older.

Sources: [Centers for Disease Control and Falls threaten the quality of life and financial security of senior citizens. GoUpstate.com](#)

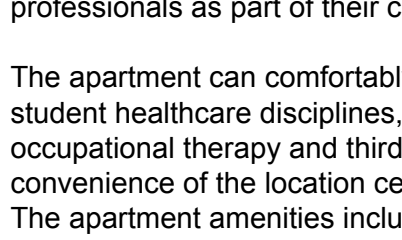
Pee Dee AHEC is sponsoring *Falls: Evaluation, Prevention, and Treatment*, a program designed for rehabilitation staff to identify risk factors for falls as well as fall prevention techniques on May 17. Strategies to increase confidence in patients with balance problems as well as red flags that require diagnostic testing will also be explored.

Program instructor Marty Josey, physical therapist with the McLeod Outpatient Rehabilitation Department, has spent years working with recovering patients who have experienced falls and has also spent time in research on the prevention of devastating falls. She completed her Bachelor of Science degree from the Medical University of South Carolina in Charleston. In addition her clinical duties in outpatient rehabilitation, she also serves as adjunct faculty for Greenville Technical College at the Florence Darlington Satellite Campus for the Physical Therapist Assistant Program.

For more information, please contact Kay Lambert, program coordinator at klambert@mcleodhealth.org.

[← Back to top](#)

Additional Housing Locations Available for Upstate Health Professions Students



Thanks to additional infrastructure funding from the state of South Carolina, Upstate AHEC is able to provide much needed housing in Greer for Health Professions students for the first time. The Greer apartment became "home away from home" to its first students on February 2 and Upstate AHEC expects many more to arrive in the coming months. The three-bedroom apartment serves as a comfortable, rent-free housing alternative for in-state medical and allied health students who are working with local healthcare professionals as part of their clinical education.

The apartment can comfortably house up to six people at a time and host various student healthcare disciplines, such as physician assistant, physical therapy, occupational therapy and third-year medical students. The residents enjoy the convenience of the location central to Greenville and Spartanburg clinical sites. The apartment amenities include a pool, clubhouse, business center and fitness facility. It also features a washer and dryer, full kitchen, workspace with laptop computer and wireless internet, and multiple TVs with basic cable.

Upstate AHEC also continues to sponsor housing in Oconee County, serving communities and students in Seneca, Anderson and Pickens.

For more information, please contact Tina Fulton, HPS coordinator, at 864-349-1168.

[← Back to top](#)

Staff Volunteers Needed for Edisto Free Clinic

The Edisto Indian Free Clinic is a not-for-profit, state and nationally certified free clinic in Ridgeville that serves anyone in the community and surrounding areas who does not have insurance or qualify for Medicare or Medicaid. The clinic provides a doctor visit, medications, and lab work at no charge for the patient. Unfortunately, the clinic is currently only open two days a month, but the goal is to open the clinic three days a week. Members of the South Carolina AHEC community can help achieve this goal by donating some of their time. Staff is needed as follows:

- Doctors
- Nurses
- Nurse practitioners
- CNA's
- Dentists
- Chiropractors
- Nutritionists
- Pharm-tech
- Medical assistants
- Receptionists

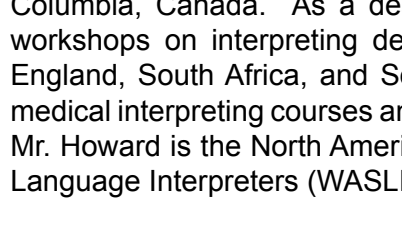
Studies have shown that many rural citizens suffer from more complex illnesses that require prolonged hospitalizations that could have been prevented if the barriers to care were reduced. If the clinic can be staffed to open three days a week, it will be able to provide a medical home for many patients who would suffer needlessly from simple medical problems that can be remedied by making healthcare more accessible to rural citizens.

For more information about donating your time or resources, please contact administrator Cheryl Mizzell at cmizzell@lowcountry.com or Rev. John G. Creel, MD at revdoc@lowcountry.com.

[← Back to top](#)

Workshop Helps to Strengthen Communication for Deaf Patients in Medical Settings

By Bennie M. Pettit, MS, Continuing Education Coordinator, Upstate AHEC



Fifty participants attended the March workshop *Interpreting in the Medical Setting*, sponsored by Upstate AHEC in collaboration with the Greenville Health System and the Registry of Interpreters for the Deaf (RID). The workshop for medical interpreters focused on the use of constructed action and constructed dialogue, as well as visualization sensibility in medical settings/terminologies. It covered specialized diseases, medications (dosage, length, timing, duration and such), palliative care/ICU, ethical situations/dilemmas, and specialized and specific anatomy and its functions/dysfunctions. The workshop was presented in American Sign Language (ASL) only; there was no voice interpretation.

The instructor, Nigel Howard, BA, PG, is a world-renown presenter of deaf topics, specializing in medical interpreting. He is an interpreter instructor at Douglas College, British Columbia, Canada in the Department of Sign Language Interpretation. He also teaches in the Department of Linguistics at the University of Victoria, British Columbia, Canada. As a deaf interpreter for over 20 years, he has conducted workshops on interpreting development and professionalism in Canada, Japan, England, South Africa, and South America. Additionally, he has co-authored ASL medical interpreting courses and taught the course in Canada and the United States. Mr. Howard is the North American representative for the World Association of Sign Language Interpreters (WASLI).

[← Back to top](#)