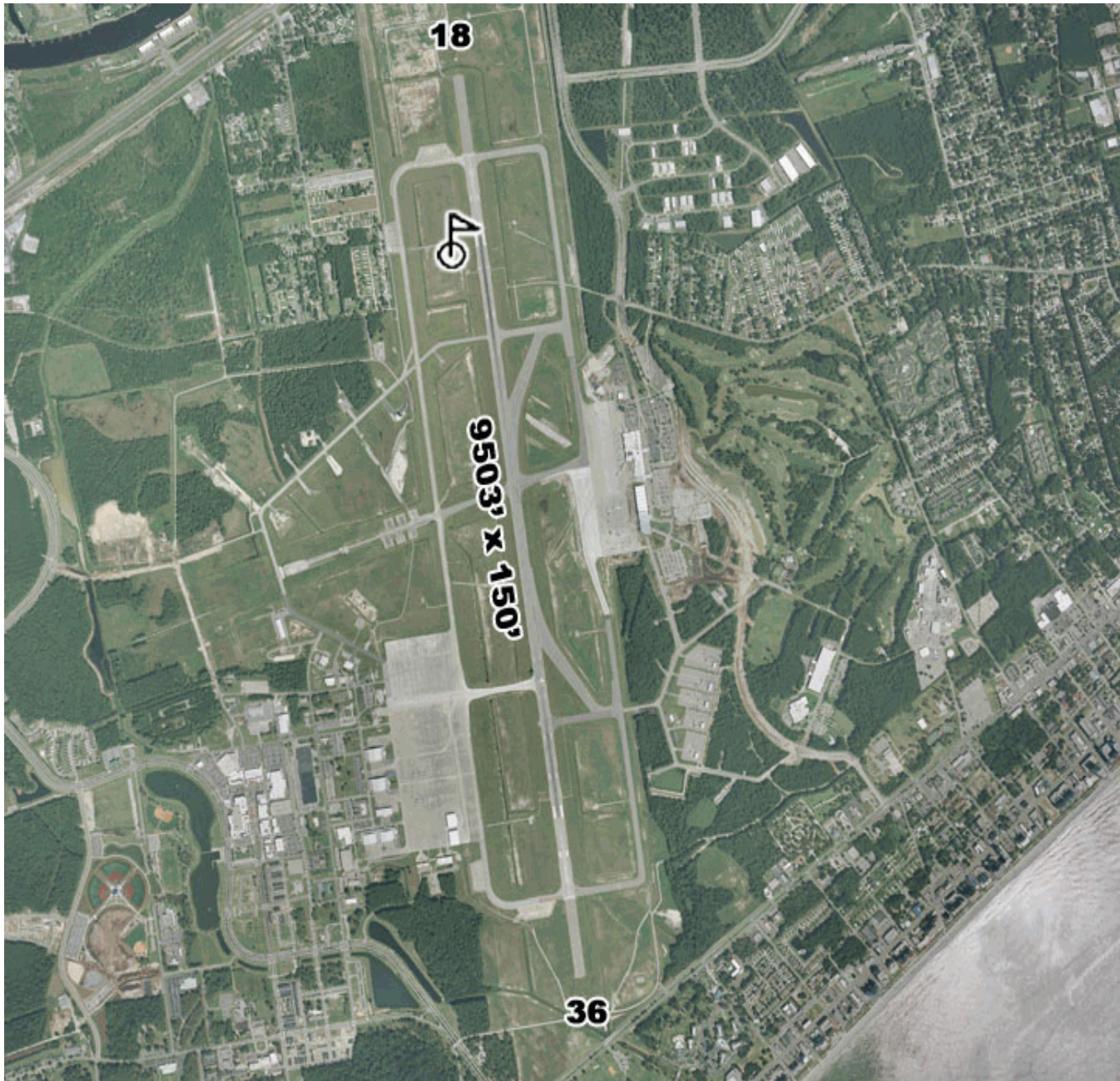




# SOUTH CAROLINA AIRPORTS SYSTEM PLAN

MYRTLE BEACH INTL - MYR  
MYRTLE BEACH, SOUTH CAROLINA

Data Cycle 06/21/2013  
Photo Date 2011



Governing Body  
HORRY CO. AIRPORT ADVISORY COMMITTEE

Manager MIKE LAPIER  
Address 1100 JETPORT RD  
City MYRTLE BEACH, SC 29577  
Phone 843-839-1580  
E-mail  
Owner HORRY COUNTY  
Address P O BOX 1236  
City CONWAY, SC 29526  
Phone 843-248-1201





# SOUTH CAROLINA AIRPORTS SYSTEM PLAN

## Governing Body

**HORRY CO. AIRPORT ADVISORY COMMITTEE**

**Manager** MIKE LAPIER  
**Address** 1100 JETPORT RD  
**City** MYRTLE BEACH, SC 29577  
**Phone** 843-839-1580  
**E-mail**

**Owner** HORRY COUNTY  
**Address** P O BOX 1236  
**City** CONWAY, SC 29526  
**Phone** 843-248-1201

**MYRTLE BEACH INTL - MYR**  
**Airport Classification - SC I**



**MYRTLE BEACH, SOUTH CAROLINA**

State Classification I – Commercial Service (SC-I): Commercial service airports provide scheduled service by airlines and/or commuter airlines, which are certificated under FAR Part 121, but not FAR Part 135, with more than 10,000 annual passenger enplanements. The airport must comply with FAR Part 139 operational requirements. A commercial service airport should have minimum instrument approach procedure minima of 200-1/2.

All airport design standards for Commercial Service airports shall be based on FAA criteria for the specific design aircraft, or most demanding aircraft, that is being used by the commercial carrier(s) serving that airport. Each airport shall have an Airport Layout Plan approved by the SCAC and FAA. The only minimum standards that the SCAC requires is for the instrument approach to the Primary Runway shall be an ILS/RNAV (GPS) LPV with minimums no higher than 200-feet and ½ mile and shall have unobstructed approaches IAW AC 150/5300-13.

State Classification I – Commercial Service (SC-I): Commercial service airports provide scheduled service by airlines and/or commuter airlines, which are certificated under FAR Part 121, but not FAR Part 135, with more than 10,000 annual passenger enplanements. The airport must comply with FAR Part 139 operational requirements. A commercial service airport should have minimum instrument approach procedure minima of 200-1/2.

All airport design standards for Commercial Service airports shall be based on FAA criteria for the specific design aircraft, or most demanding aircraft, that is being used by the commercial carrier(s) serving that airport. Each airport shall have an Airport Layout Plan approved by the SCAC and FAA. The only minimum standards that the SCAC requires is for the instrument approach to the Primary Runway shall be an ILS/RNAV (GPS) LPV with minimums no higher than 200-feet and ½ mile and shall have unobstructed approaches IAW AC 150/5300-13.

State Classification I – Commercial Service (SC-I): Commercial service airports provide scheduled service by airlines and/or commuter airlines, which are certificated under FAR Part 121, but not FAR Part 135, with more than 10,000 annual passenger enplanements. The airport must comply with FAR Part 139 operational requirements. A commercial service airport should have minimum instrument approach procedure minima of 200-1/2.

All airport design standards for Commercial Service airports shall be based on FAA criteria for the specific design aircraft, or most demanding aircraft, that is being used by the commercial carrier(s) serving that airport. Each airport shall have an Airport Layout Plan approved by the SCAC and FAA. The only minimum standards that the SCAC requires is for the instrument approach to the Primary Runway shall be an ILS/RNAV (GPS) LPV with minimums no higher than 200-feet and ½ mile and shall have unobstructed approaches IAW AC 150/5300-13.

State Classification I – Commercial Service (SC-I): Commercial service airports provide scheduled service by airlines and/or commuter airlines, which are certificated under FAR Part 121, but not FAR Part 135, with more than 10,000 annual passenger enplanements. The airport must comply with FAR Part 139 operational requirements. A commercial service airport should have minimum instrument approach procedure minima of 200-1/2.

All airport design standards for Commercial Service airports shall be based on FAA criteria for the specific design aircraft, or most demanding aircraft, that is being used by the commercial carrier(s) serving that airport. Each airport shall have an Airport Layout Plan approved by the SCAC and FAA. The only minimum standards that the SCAC requires is for the instrument approach to the Primary Runway shall be an ILS/RNAV (GPS) LPV with minimums no higher than 200-feet and ½ mile and shall have unobstructed approaches IAW AC 150/5300-13.



# SOUTH CAROLINA AIRPORTS SYSTEM PLAN

MYRTLE BEACH INTL - MYR

MYRTLE BEACH, SOUTH CAROLINA

Base Aircraft for 2012		Annual IFR Flight for 2012		Piston	Turbine	Enplanement / Deplanement for 2012	
Single Engine	401	3,944	Single Engine	3,729	215	<b>Passenger</b>	
Multi Engines	86	3,729	Multi Engines	973	2,756	Enplanement:	740,457
Helicopter	0	12	Helicopter	5	7	Deplanement:	742,097
Jet	600	19,546	Jet			<b>Cargo (pounds)</b>	
Military	0	7	Unknown			Enplanement:	0
<b>Base Totals</b>	<b>1,087</b>	<b>27,238</b>	<b>IFR Totals</b>			Deplanement:	742,097

[Hyper Link to IFR details](#)

Single Engine	401	3,944	Single Engine	3,729	215
Multi Engines	86	3,729	Multi Engines	973	2,756
Helicopter	0	12	Helicopter	5	7
Jet	600	19,546	Jet		
Military	0	7	Unknown		
<b>Base Totals</b>	<b>1,087</b>	<b>27,238</b>	<b>IFR Totals</b>		

[Hyper Link to IFR details](#)



# SOUTH CAROLINA AIRPORTS SYSTEM PLAN

MYRTLE BEACH INTL - MYR

MYRTLE BEACH, SOUTH CAROLINA

## Airport Profile

Elevation	25.00' MSL	Latitude:	33-40-47.1000N
Lighting Schedule	DUSK-0000	Longitude:	078-55-42.0000W
Magnetic Var	06°W		

## Runway Information

ID	Length	Width	Surface	VGIS	REILS	Edge Lights	Approach Lights	Traffic Pattern
18/36	9503	150	ASPH-CONC-	P4L/P4L	None	HIGH	MALSR/MALSF	18 - RH
18/36	9503	150	ASPH-CONC-	P4L/P4L	None	HIGH	MALSR/MALSF	18 - RH

## Gross Wheel Weight

ID	SW	DW	DTW	DDTW	Surface
18/36	50.0	175.0	325.0	650.0	ASPH-CONC-G
18/36	50.0	175.0	325.0	650.0	ASPH-CONC-G

## NAVAIDS

ID	Type	FREQ	Direct/Distant
CRE	VORTAC	117.60	r235° 13 NM to fld

## Communication

Tower	GRND	CLEAR	ATIS	ATC	RCO	APP/DEP	WEATHER	
FREQ	CNTRL	DEL	FREQ	FREQ	ID	BRNG/FREQ	FREQ	PHONE
128.45	120.3	120.3	123.925	119.2	MYR		124.5	(843) 238-0335
				127.4	MYR			

[Hyperlink to airport drawing diagram](#)

[Hyperlink to airport economic impact](#)



# SOUTH CAROLINA AIRPORTS SYSTEM PLAN

## Capital Improvement Program

Project Description	Project Cost	Federal Share	Non-Primary Entitlements	Discretionary	State	Local
<b>2012</b>						
All Airports - Environmental Contingency	\$50,000	0%	\$0	\$0	\$0	\$50,000
MYR - Community Hangar	\$1,000,000	0%	\$0	\$0	\$0	\$1,000,000
MYR - Runway Rehabilitation Design - Phase 1	\$1,163,397	90%	\$1,047,058	\$0	\$1,047,058	\$116,339
All Airports - Engineering / Design Contingency	\$150,000	0%	\$0	\$0	\$0	\$150,000
MYR - Terminal Capacity Enhancement Program - Year 3 of 4 (Federal FY 2012 AIP Entitlement)	\$4,163,953	90%	\$3,747,558	\$3,747,558	\$0	\$416,395
<b>Totals for 2012</b>	<b>\$6,527,350</b>		<b>\$4,794,616</b>	<b>\$3,747,558</b>	<b>\$1,047,058</b>	<b>\$0</b>
<b>2013</b>						
All Airports - Environmental Contingency	\$50,000	0%	\$0	\$0	\$0	\$50,000
All Airports - Engineering / Design Contingency	\$150,000	0%	\$0	\$0	\$0	\$150,000
All Airports - New Stormwater Pollution Prevention Plans (SW3Ps/NPDES/SPCC)	\$50,000	0%	\$0	\$0	\$0	\$50,000
MYR - Terminal Capacity Enhancement Program - Year 4 of 4 (Federal FY 2013 AIP Entitlement)	\$4,195,739	90%	\$3,776,165	\$3,776,165	\$0	\$419,574
MYR - Runway Rehabilitation Design - Phase1	\$3,334,381	90%	\$3,000,942	\$0	\$3,000,942	\$333,439
MYR - Runway Rehabilitation Design - Phase1	\$5,000,000	62%	\$3,100,000	\$0	\$3,100,000	\$1,900,000
<b>Totals for 2013</b>	<b>\$12,780,120</b>		<b>\$9,877,107</b>	<b>\$3,776,165</b>	<b>\$6,100,942</b>	<b>\$0</b>
<b>2014</b>						
MYR - Federal FY 2014 AIP Entitlement (Runway Rehabilitation - Phase 2)	\$4,222,222	90%	\$3,800,000	\$3,800,000	\$0	\$422,222
All Airports - Engineering / Design Contingency	\$150,000	0%	\$0	\$0	\$0	\$150,000
MYR - Fuel Farm Rahb Design and Construction - Phase 2	\$700,000	0%	\$0	\$0	\$0	\$700,000
All Airports - Environmental Contingency	\$50,000	0%	\$0	\$0	\$0	\$50,000
MYR - Rental Car Service Area	\$50,000	0%	\$0	\$0	\$0	\$50,000
MYR - Runway Rehabilitation Construction - Phase 2	\$7,500,000	90%	\$6,750,000	\$0	\$6,750,000	\$750,000
<b>Totals for 2014</b>	<b>\$12,672,222</b>		<b>\$10,550,000</b>	<b>\$3,800,000</b>	<b>\$6,750,000</b>	<b>\$0</b>
<b>2015</b>						
All Airports - Engineering / Design Contingency	\$150,000	0%	\$0	\$0	\$0	\$150,000
All Airports - Environmental Contingency	\$50,000	0%	\$0	\$0	\$0	\$50,000
MYR - Federal FY 2015 AIP Entitlement (MYR New Terminal Reimbursement)	\$4,222,222	90%	\$3,800,000	\$3,800,000	\$0	\$422,222
<b>Totals for 2015</b>	<b>\$4,422,222</b>		<b>\$3,800,000</b>	<b>\$3,800,000</b>	<b>\$0</b>	<b>\$0</b>



# SOUTH CAROLINA AIRPORTS SYSTEM PLAN

<b>2016</b>									
MYR - Federal FY 2016 AIP Entitlement (Priority 1)	\$4,222,222	90%	\$3,800,000	\$3,800,000	\$0	\$0	0%	\$422,222	10%
All Airports - Environmental Contingency	\$50,000	0%	\$0	\$0	\$0	\$0	0%	\$50,000	100%
MYR - Master Plan	\$833,333	90%	\$750,000	\$0	\$750,000	\$0	0%	\$83,333	10%
MYR - Rescue Vehicle (RIV)	\$526,316	95%	\$500,000	\$0	\$500,000	\$0	0%	\$26,316	5%
All Airports - Engineering / Design Contingency	\$150,000	0%	\$0	\$0	\$0	\$0	0%	\$150,000	100%
All Airports - Environmental Contingency	\$50,000	0%	\$0	\$0	\$0	\$0	0%	\$50,000	100%
<b>Totals for 2016</b>	<b>\$5,831,871</b>		<b>\$5,050,000</b>	<b>\$3,800,000</b>	<b>\$1,250,000</b>	<b>\$0</b>		<b>\$781,871</b>	
<b>2017</b>									
All Airports - Environmental Contingency	\$50,000	0%	\$0	\$0	\$0	\$0	0%	\$50,000	100%
All Airports - Engineering / Design Contingency	\$150,000	0%	\$0	\$0	\$0	\$0	0%	\$150,000	100%
MYR - Federal FY 2017 AIP Entitlement (Priority 1)	\$4,222,222	90%	\$3,800,000	\$3,800,000	\$0	\$0	0%	\$422,222	10%
<b>Totals for 2017</b>	<b>\$4,422,222</b>		<b>\$3,800,000</b>	<b>\$3,800,000</b>	<b>\$0</b>	<b>\$0</b>		<b>\$622,222</b>	
<b>2018</b>									
MYR - Federal FY 2018 AIP Entitlement (Priority 1)	\$4,222,222	90%	\$3,800,000	\$3,800,000	\$0	\$0	0%	\$422,222	10%
All Airports - Engineering / Design Contingency	\$150,000	0%	\$0	\$0	\$0	\$0	0%	\$150,000	100%
All Airports - Environmental Contingency	\$50,000	0%	\$0	\$0	\$0	\$0	0%	\$50,000	100%
MYR - Parking Structure (2,000 Spaces, 4 Floors, 50/50 - Rental Cars/HCDA)	\$60,000,000	0%	\$0	\$0	\$0	\$0	0%	\$60,000,000	100%
<b>Totals for 2018</b>	<b>\$64,422,222</b>		<b>\$3,800,000</b>	<b>\$3,800,000</b>	<b>\$0</b>	<b>\$0</b>		<b>\$60,622,222</b>	



# SOUTH CAROLINA AIRPORTS SYSTEM PLAN

## Demographic and Business Profile Report

(Data provided for 60 Mile Drive Distance from Airport)

### Total Population and Growth Rate

2000 Total Population	387,286
2008 Total Population	469,720
2013 Total Population	533,064
2000-2008 Annual Growth Rate	2.4%
2008-2013 Annual Growth Rate	2.6%

### Per Capita Income

2000 Per Capita Income	\$18,372
2008 Per Capita Income	\$24,385
2013 Per Capita Income	\$28,553

### Total Households

2000 Total Households	156,244
2008 Total Households	199,078
2013 Total Households	229,753

### Median Household Income

2000 Median HH Income	\$33,915
2008 Median HH Income	\$43,660
2013 Median HH Income	\$51,193

### Median Age

2000 Median Age	38.4
2008 Median Age	41.3
2013 Median Age	43.2

### 2008 Population by Age

Population 0 - 14	17.5%
Population 15 - 24	11.8%
Population 25 - 54	40.5%
Population 55 +	28.6%
Population 18+	78.9%
Population 85+	1.6%

### 2008 Civilian Population 16+ by Employment Status

Employed Civilian Pop 16+	212,040
Unemployed Civilian Pop 16+	16,133
Employment Rate	92.9%
Unemployment Rate	7.1%

### 2008 Employed Civilian Population by Industry

Agriculture/Mining	1.6%
Construction	11.9%
Manufacturing	8.9%
Retail/Wholesale Trade	16.2%
Transportation/Utilities	3.3%
Information	1.9%
Finance/Insurance/Real Estate	7.5%
Professional/Technical	3.3%
Management	0.1%
Accom/Food/Other Services	16.2%
Educational Services	7.5%
Health Care/Social Assistance	9.8%
Public Administration	3.5%
Admin/Support/Waste Svcs.	3.9%
Arts/Entertainment	4.5%

### 2008 Educational Attainment by Degree

<9th Grade	5.9%
Some High School	12.6%
High School Graduate	34.7%
Some College	20.3%
Associate Degree	7.5%
Bachelor's Degree	12.9%
Graduate/Professional Degree	6.2%

### 2008 Employed Civilian Population by Occupation

Management (incl. Farm Mgr.)	7.9%
Professional	10.0%
Sales	14.1%
Office/Administrative Support	11.8%
Life/Physical/Soc. Science/Soc. Svcs.	1.6%
Entertainment/Sports	1.7%
Health Care Pract/Support	9.6%
Protective Services	2.5%
Food Preparation/Serving	8.1%
Maintenance/Installation/Repair	10.1%
Construction/Extraction Services	9.5%
Production	6.3%
Transportation/Moving	6.0%
Farming/Fishing/Forestry	0.8%

### Top Businesses by Number of Employees within 60 Mile Drive Distance.

Company Name	Number of Employees
Tupperware Corp	1,100
Conway Medical Ctr	1,100
Grand Strand Regional Med Ctr	950
Georgetown Hospital System	900
Htc Business Svc	730
Blumenthal Mills Inc	711
Ocean Ridge Plantation	700
Htc Home Integration	675
Horry Telephone Cooperative	670
Arvin Meritor Inc	600
Htc Commuications	600
Waccamaw Community Hospital	600
Columbus Regional Healthcare	585
Wal-Mart Supercenter	550
Kingston Convention Sales	550
Wal-Mart	525
Du Pont Teijin Films	500
Conbraco Industries Inc	500
Santee Cooper	500
Lexington Memorial Condo	500
Wal-Mart Supercenter	460
Wal-Mart Supercenter	450
Wal-Mart Supercenter	450
Wal-Mart Supercenter	420
Sli Lighting North America	400
Legends Resorts	400
Grande Dunes Dining Room	400
Marriott-Ocean Watch Villas	400
Wal-Mart Supercenter	380
Georgia-Pacific Corp	350
Hilton-Myrtle Beach Resort	350
Brunswick Community Hospital	325
Georgia-Pacific Corp	301
Wal-Mart	301
Brunswick Plantation Golf	300

Source: ESRI. 2008 Estimates and Projections. 2000 Census. 2008 InfoUSA Business Data



# SOUTH CAROLINA AIRPORTS SYSTEM PLAN

## 60 Mile Drive Distance Map

