

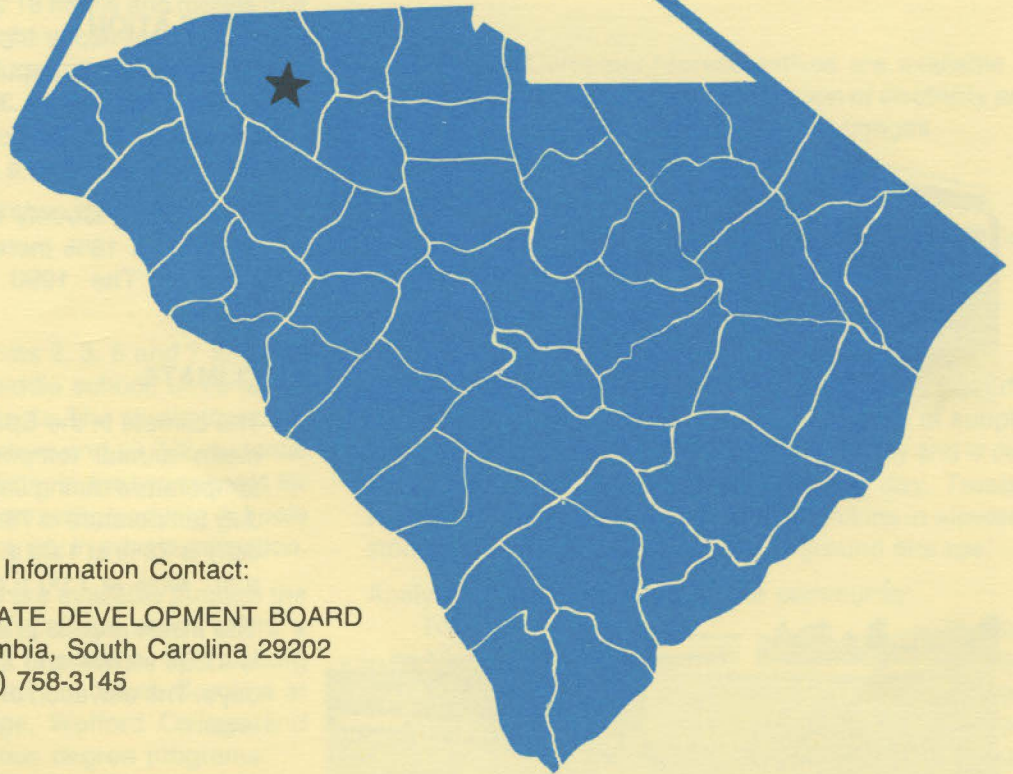
D4925
2.561
cop. 2

SPARTANBURG

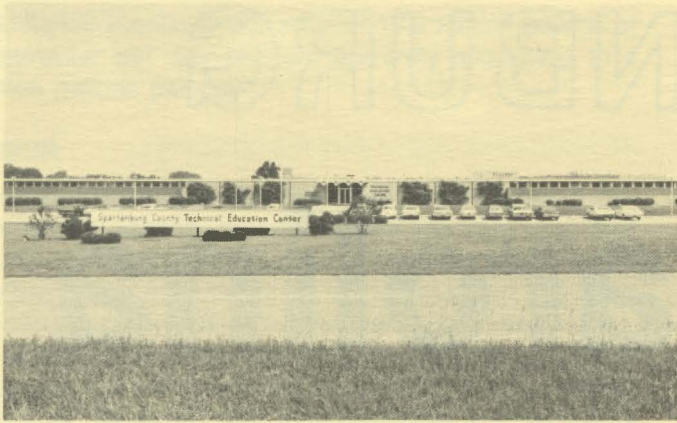
south carolina



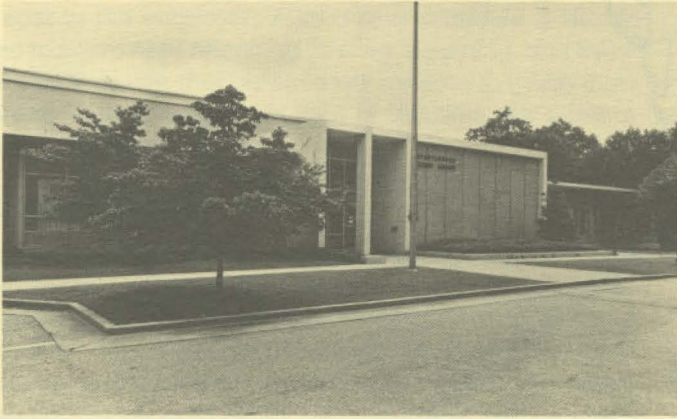
S. C. STATE LIBRARY
FEB 29 1984
STATE DOCUMENTS



For Additional Information Contact:
SOUTH CAROLINA STATE DEVELOPMENT BOARD
P. O. Box 927, Columbia, South Carolina 29202
(803) 758-3145



Spartanburg Technical College



Spartanburg County Library



Spartanburg County Courthouse



Milliken Research

LOCATION

As depicted on the cover, Spartanburg, seat of Spartanburg County, is in the northwestern section of the state. Charleston, South Carolina's busiest port, is 201 miles southeast. Columbia is 93 miles southeast and Greenville is 31 miles west. Spartanburg is 170 miles east of Atlanta; 678 miles south of New York; and 2,693 miles east of San Francisco.



POPULATION

The 1980 census population of the city of Spartanburg was 43,968. This was a 1.3% decrease from the 1970 population of 44,546. The population within a 15-mile radius is 195,598 and within a 30-mile radius is 600,201.

Spartanburg County had a 1980 census population of 201,553, a 16% increase from the 1970 population of 173,724. The 1990 projected county population is 236,100.

CLIMATE

The climate in the Spartanburg area is temperate with a mean annual temperature of 60.6° F. The average temperature during January is 42.3° F, while the average July temperature is 78.3° F. The average relative humidity daily is 78% at 1:00 a.m.; 82% at 7:00 a.m.; 54% at 1:00 p.m.; 64% at 7:00 p.m.

The mean annual precipitation in the Spartanburg area is 47.54 inches and the average growing season is 231 days. The elevation of Spartanburg is 875 feet above sea level.

COMMUNICATIONS

One daily, the *Spartanburg Herald-Journal*, and three weekly papers, the *Spartan Weekly News*, the *Spartanburg Tribune* and *The Spartanburg Metro*, are published in the city. Four AM and one FM radio stations are located

in the city. Television reception is available from seven stations, representing the three major networks and educational television. Cable television service is also available. Telephone service is provided by Southern Bell Telephone and Telegraph Company.

GOVERNMENT

The community has a council-manager form of municipal government. The three city council members and the mayor are elected for four-year terms. Spartanburg County is governed locally by a five-member county council. The members are elected for four-year terms. A county administrator is appointed.

POLICE AND FIRE

The Spartanburg Police Department has 98 full-time police officers. The department operates 31 radio equipped patrol cars. The Spartanburg Fire Department has 99 full-time firemen who operate nine pumper trucks, three aerial ladders and five stations. Spartanburg's insurance rating is Class 4.

FINANCIAL INSTITUTIONS

Spartanburg has six banks and five savings and loan associations to serve the financial needs of the community. The banks have total assets of \$7.6 billion, while the savings and loans have assets of \$755 million.

HOTELS AND MOTELS

Spartanburg has approximately 16 hotels and motels that provide 1,400 units for overnight accommodations. Six major motels provide banquet and meeting facilities for groups totaling 1,000 persons.

CHURCHES

Spartanburg has over 130 churches representing all the major denominations.

EDUCATION

Spartanburg is located in districts 2, 3, 6 and 7 and has 16 elementary schools, one middle school, three junior high schools, and four high schools. The student/teacher ratio is 16.1 to 1, with 1,194 teachers and 19,242 students. Also included in these school districts are two schools for the handicapped. In addition, numerous private schools serve the area offering a wide variety in private education.

Higher education opportunities are available through the Spartanburg County Technical College which offers a wide variety in technical training. In addition, Spartanburg Methodist College, The University of South Carolina at Spartanburg, Converse College, Wofford College and Rutledge College offer numerous degree programs.

MEDICAL SERVICES

Medical services for the community are provided by the 532-bed Spartanburg General Hospital, the 213-bed Mary Black Memorial Hospital, the 108-bed Doctors Memorial

Hospital and other specialized medical treatment facilities. The community has 286 privately-practicing medical doctors, and 68 privately-practicing dentists.

RECREATION AND CIVIC FACILITIES

Spartanburg's Memorial Auditorium has fixed seating capacity for some 3,400 people on the auditorium level and can seat 1,000 people for banquets in the arena level. Recreation of unusually broad range is enjoyed by Spartanburg County residents due to location and climate. The area has four public golf courses and two private country clubs. The City of Spartanburg operates six recreation centers, 24 public parks and playgrounds, 38 lighted all-weather tennis courts, 19 lighted softball parks, as well as numerous organized athletic clubs. Hunting, fishing, camping, sailing, swimming, mountain climbing, water skiing, snow skiing at seven North Carolina mountain ski slopes, and a variety of collegiate spectator sports are all accessible in the Piedmont. The Blue Ridge and Great Smoky Mountains, many large lakes, the Atlantic Ocean's "Grand Strand" beaches and major metropolitan centers of Atlanta and Charlotte are all within easy driving distance of Spartanburg.

POWER

Electric power is available to the community and surrounding areas from Duke Power Company. Duke Power service is supplied to any industrial customer at utilization voltage from standard equipment without additional charge. Duke's industrial rate is among the lowest in the nation.

Duke Power Company representatives are available to assist industry in its economic application of electricity and in analyzing their electrical needs and usages.

FUELS

Natural gas is supplied by Piedmont Natural Gas Company.

WATER

Spartanburg obtains its municipal water supply from the South Pacolet River. Their system is capable of supplying water at a rate of 64 million gallons per day and is currently averaging 28.3 million gallons per day. Treated water storage consists of 4.47 million gallons in elevated storage and 14.3 million gallons in ground storage.

Analysis of water supplied in the community:

Total solids	34 mg/L
Alkalinity	5 mg/L
Calcium	6 mg/L
Hardness	36 mg/L
Iron	0.1 mg/L
pH	6.6

SEWER

Spartanburg utilizes three wastewater treatment plants to dispose of the community's wastewater. The plants have

a designed maximum capacity for 10.3 million gallons of wastewater per day and are currently averaging 11.4 million gallons per day.

LABOR

Because labor information may change in this area, a current labor availability report prepared and kept up to date by the S. C. State Development Board will be furnished to prospective manufacturers at their request. The comprehensive report will include sources of recruitable labor, labor force characteristics, work force skill levels, earnings data and other pertinent information. The S. C. State Board for Technical and Comprehensive Education has the resources to recruit and train workers in accordance with a company's entry criteria. This training is at little or no cost to the employer. A lead-time schedule is developed to coordinate recruiting, testing, selecting, and training. This assures that persons will be able to move from training to their respective jobs at the time the plant is ready for initial production.

TRANSPORTATION

Spartanburg is served by two interstate highways, I-85 and I-26, three United States highways and three South Carolina highways. The community is served by the three railroads: The Southern Railway System, Seaboard Systems, and the Family Lines Rail System. Spartanburg is served by 65 authorized motor carriers, ten of which have terminal facilities in the community.

Freight Delivery Times:

To:	By Rail:	By Truck:
Atlanta	2 days	1 day
Boston	6 days	3 days
Chicago	6 days	3 days
Houston	9 days	4 days
New York	4 days	3 days
St. Louis	5 days	3 days
San Francisco	12 days	5 days

The Greenville-Spartanburg Jetport, 16 miles from the community, offers regularly scheduled commercial airline service on Eastern, Bankair, Piedmont, Atlantic

MAJOR EMPLOYERS

Name
Hoechst Fibers Industries
Kohler Co.
Michelin Tire Corp.
Milliken & Co.
Phillips Fibers Corp.
S&S Mfg. Co.
Spartan Mills
Toledo Scale
Union Camp Corp.

Southeast, Sunbird, Wheeler and U.S. Air. Private aircraft utilize the Spartanburg Downtown Memorial Airport, which has paved and lighted runways of 5,203 and 3,400 feet. Services available at the downtown airport are flight instruction; charter; rentals; air taxi; major airframe and major powerplant repairs; RBN; 80, 100LL and Jet A fuel; Unicom and Vortac.

FOREIGN TRADE ZONE

A Foreign Trade Zone is located in Summerville, South Carolina, 25 miles from the Port of Charleston and 176 miles from the community. The Foreign Trade Zone allows manufacturers to store, manufacture, or process goods without paying U.S. Customs duties or worrying about quota compliance. This Foreign Trade Zone is served by a multimode transportation network which provides excellent accessibility to market areas.

TAXES

The assessment on industrial property in South Carolina is 10.5% of the market value. New industry is granted a five-year moratorium on general county taxes (with the exception of school taxes). The city tax rate is \$11.55 per \$100 of assessed value. The average county rate is \$20.42 per \$100 of assessed value. The effective city tax rate for industrial property is \$1.21 (tax liability per \$100 of market value). The average effective county rate is \$2.14. The state has no tax on a manufacturer's inventories, goods-in-process, raw materials or finished goods. Treatment facilities or equipment of manufacturing plants which control water or air pollution are exempt from all property taxation.

INDUSTRIAL SITES

Industrial sites are available in Spartanburg with a wide range of geographic and topographic features. In all probability, a site that will meet the needs of most industries' requirements has been identified, catalogued, and entered into the State Development Board's Computerized Site Selection System. Detailed site information is available and will be furnished upon request.

Product or Service	Employees
Polyester fiber	2,216
Plumbing fixtures	696
Truck tires	1,500
Textile research, yarn, fabric	844
Polypropylene and filament fibers	608
Clothing	850
Textiles	2,760
Scales, printers	220
Consumer bags, corrugated boxes	681

