

# SCSL Digital Collections

## State park vacation cabins

Item Type	Text
Publisher	South Carolina State Library
Rights	Copyright status undetermined. For more information contact, South Carolina State Library, 1500 Senate Street, Columbia, South Carolina 29201.
Download date	2024-09-16 06:11:26
Link to Item	<a href="http://hdl.handle.net/10827/7426">http://hdl.handle.net/10827/7426</a>

S.C. Outdoor Life CAMPING

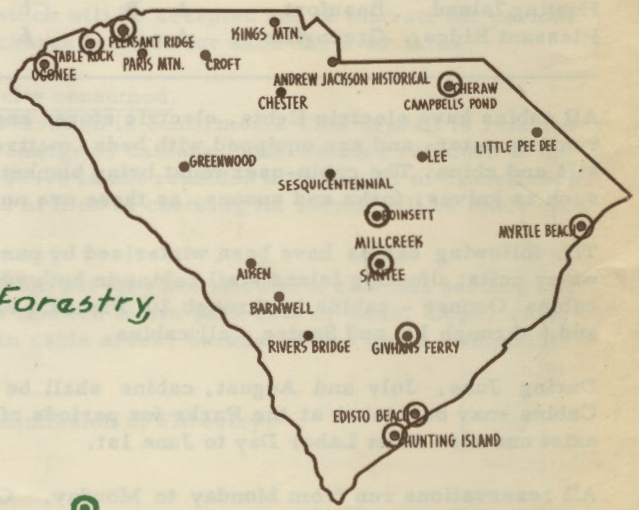
~~\_\_\_\_\_~~  
F7623  
2.P16-2  
Copy 1

# STATE PARK VACATION CABINS

STATE PARKS ARE YOURS TO ENJOY—  
"FROM THE MOUNTAINS TO THE SEA"



S. C. STATE LIBRARY  
JUN 2 1 1989  
STATE DOCUMENTS



Apply to:  
S.C. State Commission of Forestry  
Division of State Parks  
Box 357, Columbia, S.C.

**S. C. STATE LIBRARY BOARD**

Revised: 9-20-55

⊙ Location of State Parks having vacation cabins

### Location and Facilities

Family vacation cabins are available in the following State Parks, subject to established Rules and Regulations.

<u>PARK</u>	<u>COUNTY</u>	<u>CABIN NUMBER</u>	<u>NO. OF PERSONS</u>	<u>BED ROOMS</u>	<u>HEAT</u>
Cheraw	Chesterfield	1 - 8	6	1	None
Cheraw	Chesterfield	9	10	4	None
Givhans Ferry	Dorchester	1 - 5	6	1	Fireplaces
Hunting Island	Beaufort	1 - 3	6	2	Oil Heaters
Hunting Island	Beaufort	10	6	2	Oil Furnace
Myrtle Beach	Horry	1 - 5	6	2	Heaters - Cabins 1-3-4
Oconee	Oconee	7-9-10-11-13	4	1-Rm. Cabin	Fireplaces
Oconee	Oconee	8 & 12	6	2	Fireplaces
Oconee	Oconee	1 - 6	6	2	Fireplaces
Oconee	Oconee	14 - 20	6	2	Fireplaces & Heaters
Poinsett	Sumter	1 - 2	4	1-Rm. Cabin	Fireplaces
Poinsett	Sumter	3 - 5	6	1	Fireplaces
Poinsett	Sumter	6	20	5	Fireplaces
Santee	Orangeburg	1 - 2	6	1	Oil Heaters
Table Rock	Pickens	1 - 2	6	1	Fireplaces
Table Rock	Pickens	4 - 5	6	2	Fireplaces
Table Rock	Pickens	3-7-9-10-11	6	1	Fireplaces & Heaters
Table Rock	Pickens	6 & 8	6	2	Fireplaces & Heaters
Table Rock	Pickens	12	12	3	Fireplace

#### Facilities for Negro Families:

Hunting Island	Beaufort	A - B	6	1	Oil Heaters
Pleasant Ridge	Greenville	A - B	6	2	Oil Heaters

All cabins have electric lights, electric stoves and electric refrigerators, bathrooms with running water, and are equipped with beds, mattresses, pillows, furniture, cooking utensils and china. The cabin-user must bring blankets, bed linen and towels, and silverware, such as knives, forks and spoons, as these are not included.

The following cabins have been winterized by panelling and adding of heat and electric hot water units: Hunting Island - all cabins in both white and negro areas; Myrtle Beach - all cabins; Oconee - cabins 14 through 20; Pleasant Ridge - all cabins; Table Rock - cabins 3 and 6 through 11; and Santee - all cabins.

During June, July and August, cabins shall be reserved for periods of one week only. Cabins may be rented at the Parks for periods of less than one week if vacancies should exist and also from Labor Day to June 1st.

All reservations run from Monday to Monday. Cabin user checks in cabin at 4:00 P.M. Monday afternoon and must vacate by 9:00 A.M. the following Monday morning.





0 01 01 0113016 8

Schedule of Rates

PARK	SUMMER		OFF-SEASON	
	Rate Per Week	Minimum Charge	Rate Per Week	Minimum Charge
Cheraw (Cabins 1 - 8)	\$ 24.00	\$ 12.00	\$ 18.00	\$ 9.00
Cheraw (Cabin 9)	36.00	18.00	25.00	15.00
Givhans Ferry (Cabins 1 - 5)	24.00	12.00	18.00	9.00
Hunting Island (Beach Houses 1 - 3 & 10)	42.00	20.00	32.00	18.00
Myrtle Beach (Cabins 1 - 5)	42.00	20.00	32.00	18.00
Oconee (Cabins 7-9-10-11-13)	20.00	10.00	16.00	8.00
Oconee (Cabins 8 and 12)	24.00	12.00	18.00	9.00
Oconee (Cabins 1 - 6)	30.00	15.00	22.50	12.00
Oconee (Cabins 14 - 20)	36.00	20.00	25.00	15.00
Poinsett (Cabins 1 - 2)	15.00	7.50	10.00	5.00
Poinsett (Cabins 3 - 5)	24.00	12.00	18.00	9.00
Poinsett (Cabin 6)	42.00	20.00	30.00	15.00
Santee (Cabins 1 - 2)	28.00	14.00	20.00	12.00
Table Rock (Cabins 1 - 2)	24.00	12.00	18.00	10.00
Table Rock (Cabins 4 - 5)	30.00	15.00	22.50	12.00
Table Rock (Cabins 3-7-9-10-11)	33.00	18.00	25.00	15.00
Table Rock (Cabins 6 and 8)	36.00	20.00	25.00	15.00
Table Rock (Cabin 12)	44.00	2.00 per person	25.00	2.00 per person
<hr/>				
<b>Facilities for Negro Families</b>				
Hunting Island (Cabins A and B)	35.00	17.50	25.00	12.50
Pleasant Ridge (Cabins A and B)	35.00	17.50	25.00	12.50

"Minimum Charge" is the minimum rate which will be accepted and is the rate for periods of from one to three days. An additional charge is made for each day over three.

Additional charge will be made for electricity consumed.

A \$5.00 deposit is required at the time reservation is confirmed. This deposit is retained to cover use of the electricity and any breakage or damage, with balance refunded at the close of the rental period. The deposit of \$5.00 is not refunded in the event of cancellation. The entire rent for the cabin must be paid at time of checking in; refund will be made upon checking out.

No accommodations for servants are available but they are allowed if cots and bedding are brought by the cabin-user. They will not be allowed to use park cots or beds. Dogs, cats, and pets cannot be permitted in cabins or in cabin areas, because of the many complaints received.

Make checks payable to the S. C. State Commission of Forestry.

During the period June 1st through Labor Day summer rates are effective and cabins are rented for a period of one week only. This is necessary because the demand for cabins for weekly vacations exceeds the number of cabins available.

To give every family an equal opportunity to obtain a cabin, assignments are made as a result of a public drawing. All South Carolina applications are considered first; then out-of-state applications are reviewed.

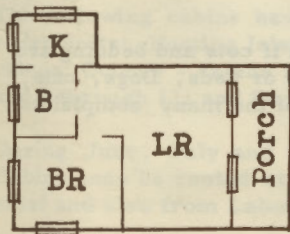
Applications to be included in the drawing must be addressed to the S. C. State Commission of Forestry, Box 357, Columbia, S. C., and must be received in Columbia prior to March 1st.

During the period Labor Day to June 1st off-season rates are effective and to reserve a cabin during this period applications should be addressed direct to:

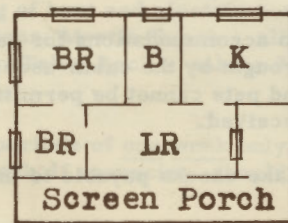
Park Superintendent, Cheraw State Park, Cheraw, S. C.  
Park Superintendent, Edisto Beach State Park, Edisto Island, S. C.  
Park Superintendent, Givhans Ferry State Park, Ridgeville, S. C.  
Park Superintendent, Hunting Island State Park, Frogmore, S. C.  
Park Superintendent, Myrtle Beach State Park, Myrtle Beach, S. C.  
Park Superintendent, Oconee State Park, Walhalla, S. C.  
Park Superintendent, Poinsett State Park, Wedgefield, S. C.  
Park Superintendent, Table Rock State Park, Pickens, S. C.  
Park Superintendent, Santee State Park, Rt. #1, Santee, S. C.

Park Superintendent, Pleasant Ridge State Park, Box 2, Jarrard Store, Cleveland, S. C.

3-4-58



Floor plan of one bedroom cabin



Floor plan of two bedroom cabin