

# SCSL Digital Collections

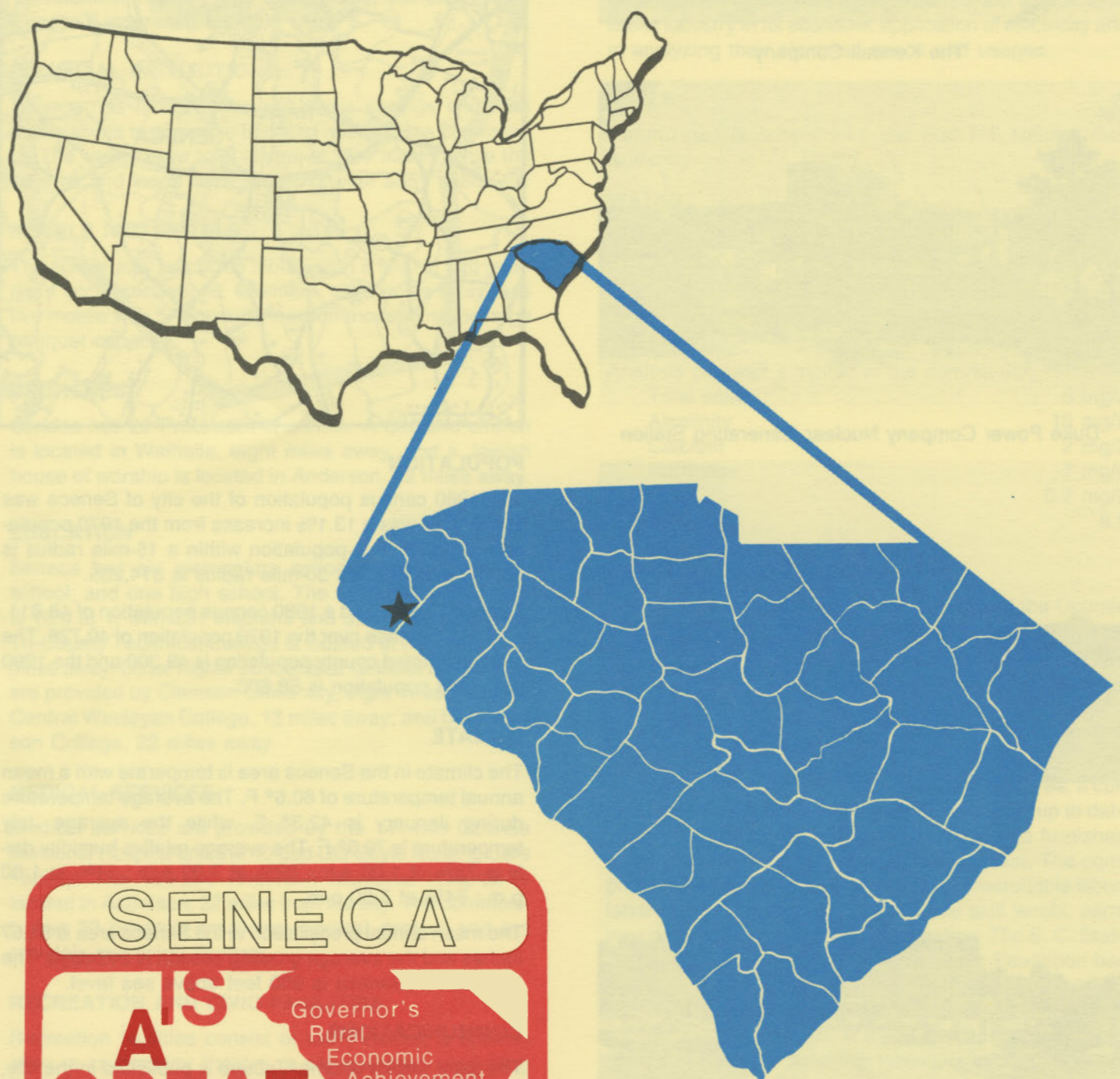
## Seneca, South Carolina

|               |  |
|---------------|--|
| Item Type     | Text   |
| Publisher     | South Carolina State Library   |
| Rights        | Copyright status undetermined. For more information contact, South Carolina State Library, 1500 Senate Street, Columbia, South Carolina 29201. |
| Download date | 2024-09-22 22:16:49  |
| Link to Item  | <a href="http://hdl.handle.net/10827/396">http://hdl.handle.net/10827/396</a>  |

D4925  
2.535  
1983

# SENECA

# south carolina

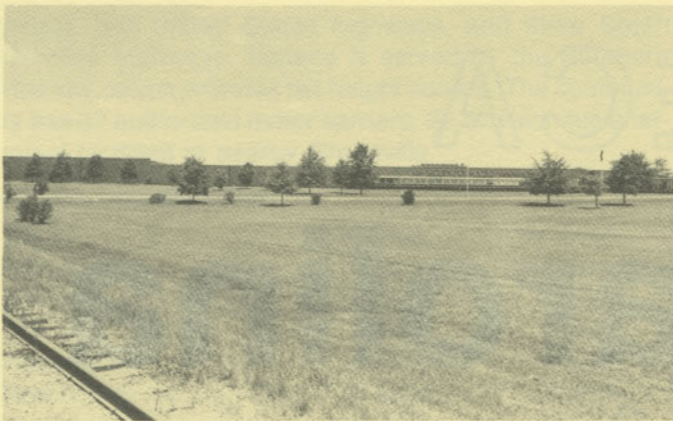


**SENECA**  
**IS**  
**A GREAT TOWN**

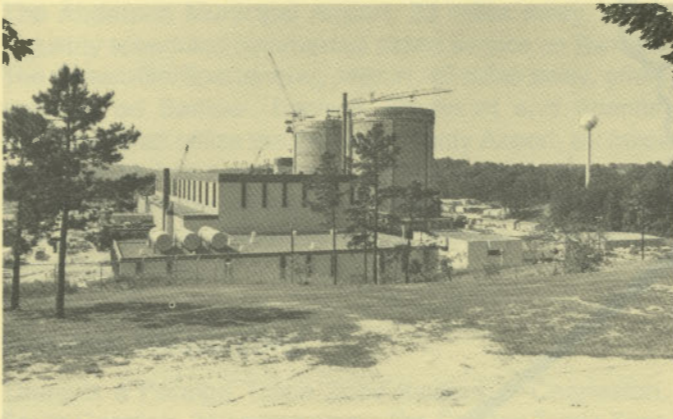
Governor's  
Rural  
Economic  
Achievement  
Trophy

S. C. STATE LIBRARY  
NOV 28 1983  
STATE DOCUMENTS

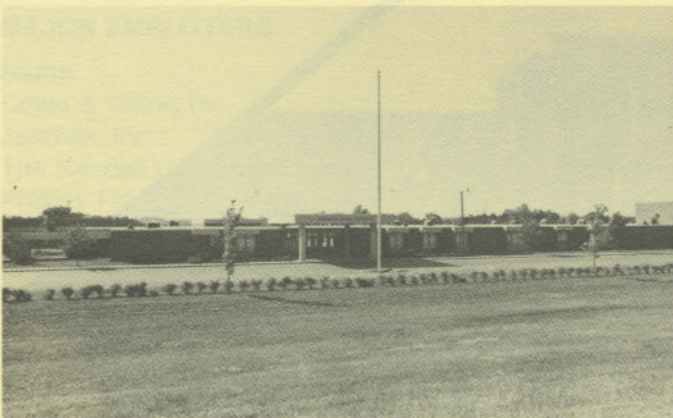




The Kendall Company



Duke Power Company Nuclear Generating Station



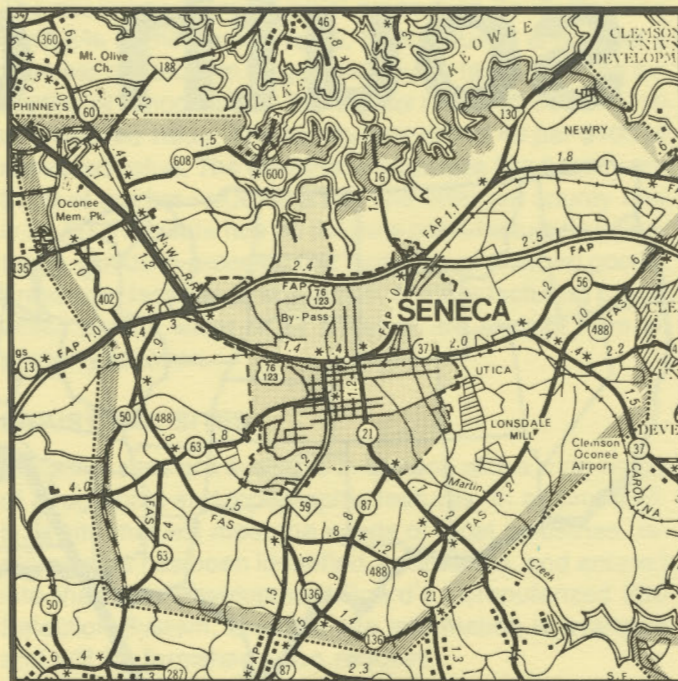
Seneca High School



Oconee Memorial Hospital

## LOCATION

As depicted on the cover, Seneca is in the northwestern section of the state in Oconee County. Charleston, South Carolina's busiest port, is 240 miles southeast. Columbia is 139 miles southeast and Greenville is 38 miles east. Seneca is 125 miles northeast of Atlanta; 735 miles south of New York; and 2,648 miles east of San Francisco.



## POPULATION

The 1980 census population of the city of Seneca was 7,436. This was a 13.1% increase from the 1970 population of 6,573. The population within a 15-mile radius is 98,460 and within a 30-mile radius is 314,235.

Oconee County had a 1980 census population of 48,611, a 19.4% increase over the 1970 population of 40,728. The 1981 estimated county population is 49,300 and the 1990 projected population is 58,600.

## CLIMATE

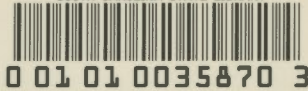
The climate in the Seneca area is temperate with a mean annual temperature of 60.6° F. The average temperature during January is 42.3° F, while the average July temperature is 78.3° F. The average relative humidity daily is 78% at 1:00 a.m.; 82% at 7:00 a.m.; 54% at 1:00 p.m.; 64% at 7:00 p.m.

The mean annual precipitation in the Seneca area is 51.67 inches and the average growing season is 208 days. The elevation of Seneca is 950 feet above sea level.

## COMMUNICATIONS

The semi-weekly *Journal-Tribune* is published in the city, and five dailies circulate in the community. WSNW-AM and WBFM-FM have broadcast facilities in the community and several other stations serve the area. Television reception is available from three stations, representing the three major networks. Telephone service is provided by Southern Bell Telephone and Telegraph Company.





## GOVERNMENT

The community has a mayor-council form of municipal government. The eight city council members are elected for two-year terms. Oconee County is governed locally by a council-supervisor, with the members elected for four-year terms.

## POLICE AND FIRE

The Seneca Police Department has 19 full-time police officers. The department operates six radio equipped patrol cars. The Seneca Fire Department has 13 full-time and 17 volunteer firemen who operate four pumper trucks. Seneca's insurance rating is Class 6.

## FINANCIAL INSTITUTIONS

Seneca has three banks and three savings and loan associations to serve the financial needs of the community. The banks have total assets of \$5.0 billion, while the savings and loans have assets of over \$557 million.

## HOTELS AND MOTELS

The community has three motels with a total of 230 overnight accommodations. Clemson, eight miles away, has five motels with 577 overnight accommodations and large banquet capacity.

## CHURCHES

Seneca has 22 Protestant churches. A Catholic church is located in Walhalla, eight miles away, and a Jewish house of worship is located in Anderson, 22 miles away.

## EDUCATION

Seneca has six elementary schools; one junior high school; and one high school. The student/teacher ratio is 16.9 to 1, with 231 teachers and 3,911 students. The Tri-County Technical College is located at Pendleton, 13 miles away. Other higher educational facilities for the area are provided by Clemson University, eight miles away; by Central Wesleyan College, 13 miles away; and by Anderson College, 22 miles away.

## MEDICAL SERVICES

Medical services are provided by the 141-bed Oconee Memorial Hospital and the 40-bed Lila Doyle Nursing Care Facility. The 459-bed Anderson Memorial Hospital is located in Anderson, 22 miles from the city. The community has 33 privately-practicing medical doctors and ten privately-practicing dentists.

## RECREATION AND CIVIC FACILITIES

Recreation facilities consist of two theaters, a bowling alley, a community theater, a city-operated swimming pool, tennis courts, four 18-hole golf courses and several athletic fields. Hartwell Reservoir, Lake Keowee and other large lakes provide areas for fishing, boating, swimming and other water sports. Oconee State Park, 18 miles away, offers fishing, swimming and camping areas. The county-owned High Falls Park is located on Lake Keowee, 12

miles from Seneca. The park has campsites, picnic facilities, modern bathhouse and pavilion, swimming area and paved boat ramps. Mountain resorts are within an hour's drive.

## POWER

Electric power is supplied by Duke Power Company. Service is supplied to any industrial customer at utilization voltage from standard Duke Power Company equipment without additional charge. Duke's industrial rate is among the lowest in the nation.

Duke Power Company representatives are available to assist industry in its economic application of electricity and in analyzing their electrical needs and usages.

## FUELS

Natural gas is supplied by the Fort Hill Natural Gas Authority.

## WATER

The Seneca Light and Water Department obtains its water supply from nearby Lake Keowee. The filter plant is capable of treating 4 million gpd and currently has a daily load of 1.75 million gpd. Elevated and ground storage amount to an additional 1.5 million gallons.

Analysis of water supplied in the community:

|              |          |
|--------------|----------|
| Total solids | 6 mg/L   |
| Alkalinity   | 10 mg/L  |
| Calcium      | 2 mg/L   |
| Hardness     | 7 mg/L   |
| Iron         | 0.2 mg/L |
| pH           | 8.6      |

## SEWER

The present system is under the authority of the Oconee County Sewer Commission which serves four communities including Seneca. The system has a design capacity of 5 million gpd and is currently utilizing 2.2 million gpd.

## LABOR

Because labor information may change in this area, a current labor availability report prepared and kept up to date by the S. C. State Development Board will be furnished to prospective manufacturers at their request. The comprehensive report will include sources of recruitable labor, labor force characteristics, work force skill levels, earnings data and other pertinent information. The S. C. State Board for Technical and Comprehensive Education has the resources to recruit and train workers in accordance with a company's entry criteria. This training is at little or no cost to the employer. A lead-time schedule is developed to coordinate recruiting, testing, selecting, and training. This assures that persons will be able to move from training to their respective jobs at the time the plant is ready for initial production.

## TRANSPORTATION

Seneca is served by one interstate highway, I-85 (13



miles), two United States highways, and three South Carolina highways. Seneca is served by the Southern Railway, which provides rail freight service. The community has 37 authorized motor carriers, 32 of which have terminal facilities in nearby Greenville.

**Freight Delivery Times:**

| To:           | By Rail: | By Truck: |
|---------------|----------|-----------|
| Atlanta       | 2 days   | 1 day     |
| Boston        | 6 days   | 3 days    |
| Chicago       | 6 days   | 3 days    |
| Houston       | 9 days   | 4 days    |
| New York      | 4 days   | 3 days    |
| St. Louis     | 5 days   | 3 days    |
| San Francisco | 12 days  | 5 days    |

The Anderson Municipal Airport, 22 miles away, offers regularly scheduled commercial airline service on Bankair. The Greenville/Spartanburg Jetport, 47 miles away, offers services on Bankair, Eastern, Piedmont and Atlantis. Private aircraft utilize the Oconee County Airport, six miles away, which has a paved and lighted 3,000-foot runway. Services available at the county airport are charter service, Unicom, tiedowns and hangar storage, RBn, Vortac and 100LL fuel.

**FOREIGN TRADE ZONE**

There is a Foreign Trade Zone located in Charleston, South Carolina, 240 miles away. The Foreign Trade Zone

allows manufacturers to store, manufacture or process goods without paying U.S. Customs duties or worrying about quota compliance. This Foreign Trade Zone is served by a multi-mode transportation network which provides excellent accessibility to market areas.

**TAXES**

The assessment on industrial property in South Carolina is 10.5% of the market value. New industry is granted a five-year moratorium on general county taxes (with the exception of school taxes). The city tax rate is \$6.00 per \$100 of assessed value. The county rate is \$12.40 per \$100 of assessed value. The effective city tax rate (tax liability per \$100 of market value) is \$.63. The effective county rate is \$1.30. The state has no tax on a manufacturer's inventories, goods-in-process, raw materials or finished goods. Treatment facilities or equipment of manufacturing plants which control water or air pollution are exempt from all property taxation.

**INDUSTRIAL SITES**

Industrial sites are available in Seneca with a wide range of geographic and topographic features. In all probability, a site that will meet the needs of most industries' requirements has been identified, catalogued, and entered into the State Development Board's Computerized Site Selection System. Detailed site information is available and will be furnished upon request.

**MAJOR EMPLOYERS**

| Name                               | Product or Service      | Employees |
|------------------------------------|-------------------------|-----------|
| Coats & Clark, Inc.                | Molded plastic products | 152       |
| Jantzen, Inc.                      | Sportswear              | 750       |
| The Kendall Company                | Elastic health products | 506       |
| Phillips Fibers Corporation        | Nonwoven products       | 250       |
| J. P. Stevens & Company (2 plants) | Cotton fabrics          | 2,935     |

For Additional Information Contact:

SOUTH CAROLINA STATE DEVELOPMENT BOARD  
 P. O. Box 927, Columbia, South Carolina 29202  
 (803) 758-3145