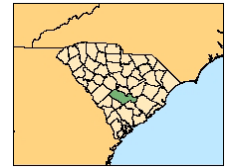


# ORANGEBURG COUNTY, SC

## Hazard Profile for 2008

An Excerpt from the State of South Carolina Hazard Assessment for 2008



### I. Summary

Orangeburg County is vulnerable to both natural (hurricanes/tropical storm) and technological (hazardous material incidents) hazards. Hurricane/tropical storms produce the most monetary damage; however the recurrence interval is 6 years making it a relatively infrequent event. Wildfires, thunderstorms, and hazardous material incidents are some of the prominent hazards that regularly affect the county, based on past occurrences.

### II. Social Vulnerability

Social vulnerability examines the socioeconomic and demographic character of places and helps to explain the variation in the population's ability to prepare for and respond to hazards. The Social Vulnerability Index (SoVI) is a statistical measure that compares social vulnerability to environmental hazards among places, and then visually displays these comparisons on a map. SoVI thus illustrates where there is uneven capacity for preparedness and response and where additional planning and response resources might be used most effectively to help residents. The variables used in determining the Social Vulnerability (SoVI) score along with how SoVI is calculated are available on the Hazards and Vulnerability Research Institute SoVI website (<http://www.sovius.org>).

Within Orangeburg County, the census tracts exhibit moderate to moderately high levels of social vulnerability. Census tracts within the city of Orangeburg have the highest SoVI scores, illustrating elevated levels of social vulnerability. Figure 1 provides maps of the Orangeburg County depicting (on the left) social vulnerability by census tract and (on the right) cities and major roads.

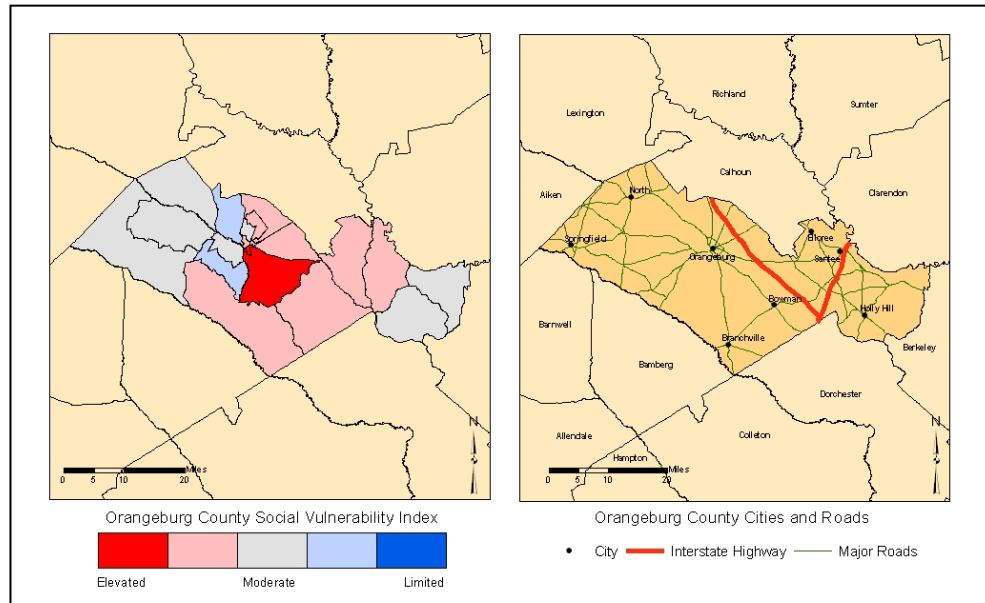


FIGURE 1. The Social Vulnerability for Orangeburg County, SC by US Census tracts and a general reference map of Orangeburg County.

### III. Terms

**Disaster** – a singular hazard event that results in widespread human losses or has profound impacts on local environments.

**Frequency** – a calculated number showing the chance of an event occurring each year based on the historic record.

**Hazard** – the potential threat to humans as well as the impact of an event on society and the environment.

**Recurrence** – a calculated number that examines the expected time interval between events based on the historic record.

**Risk** – the likelihood or probability of occurrence of a hazard or adverse event.

**Vulnerability** – the potential for loss or the capacity to suffer harm from a hazard event.



South Carolina Emergency  
Management Division -  
Mitigation Division  
E-mail: [mbery@emd.sc.gov](mailto:mbery@emd.sc.gov)  
<http://www.scemd.org>

Hazard & Vulnerability  
Research Institute  
University of South Carolina  
E-mail: [scutter.sc.edu](mailto:scutter.sc.edu)  
<http://webra.cas.sc.edu/hvri>



ORANGEBURG COUNTY HAZARD PROFILE 2008

IV. Hazard Identification

The estimated recurrence of a hazard is a useful element (based on event frequency) for distinguishing between infrequent hazards like earthquakes, and frequent hazards such as hazardous materials incidents or traffic accidents. The most common hazard events in Orangeburg County are hazardous material accidents, severe thunderstorms and wind, hail, and wildfires. Droughts, earthquakes, and winter weather are hazards with the lowest recurrence intervals. The recurrence and hazard frequency table can be seen in Table 1.

TABLE 1. The Hazard Profile for Orangeburg County, SC.

Hazard <sup>a</sup>	Number of Events	Years in Record	Recurrence Interval (Years)	Hazard Frequency (Percent Chance per Year)
<b>Coastal Events</b>				
Hurricane/Tropical Storm	26	158	6.08	16.46
Ocean & Lake Surf <sup>b</sup>	1	16	16.00	6.25
Waterspout	0	16	*	*
Dam Failure	-	-	-	-
Drought	1	59	59.00	1.69
Flood	8	59	7.38	13.56
Fog	0	12	*	*
<b>Geophysical Events</b>				
Avalanche	0	49	*	*
Earthquake	20	310	15.50	6.45
Landslide	0	49	*	*
<b>Human-Induced Events</b>				
Civil Disturbance	-	-	-	-
Hazardous Materials (Hazmat)	374	22	<0.50	1,700.00**
Nuclear Power Plant	0	8	*	*
Terrorism	0	29	*	*
Transportation (Motor Vehicle)	21,793	10	<0.50	217,930.00**
<b>Severe Thunderstorm Events</b>				
Funnel Cloud	0	16	*	*
Hail	134	59	<0.50	227.12**
Heavy Precipitation	1	15	15.00	6.67
Lightning	9	16	1.78	56.25
Thunderstorm & Wind	233	59	<0.50	394.92**
Tornado	47	59	1.26	79.66
Temperature Extremes	1	16	16.00	6.25
Wildfire	4,703	21	<0.50	22,395.24**
Winter Weather (Snow & Ice)	4	59	14.75	6.78
<sup>a</sup> Data Sources: National Climatic Data Center ( <a href="http://www.ncdc.noaa.gov/cgi-win/wcqi.dll?wwEvent-Storm">www.ncdc.noaa.gov/cgi-win/wcqi.dll?wwEvent-Storm</a> ); National Geophysical Data Center ( <a href="http://www.ngdc.noaa.gov/hazard/">www.ngdc.noaa.gov/hazard/</a> ) <sup>b</sup> Includes coastal flooding, coastal erosion, coastal winds			* Unable to calculate (cannot divide by zero) ** Percent is greater than 100.00, therefore hazard can be expected to occur more than once per year - Data Unavailable	

V. Hazard Loss Information

When compared to South Carolina as a whole, Orangeburg County has a higher probability of loss-producing lightning and tornado events, and is around the average for drought and flooding. This comparison between the county and state in Figure 2 (page 3) shows hazards that exceeded the state mean in red type. Winter weather is well below the state mean indicating that this hazard has historically produced fewer losses for the county when compared to the state as a whole.

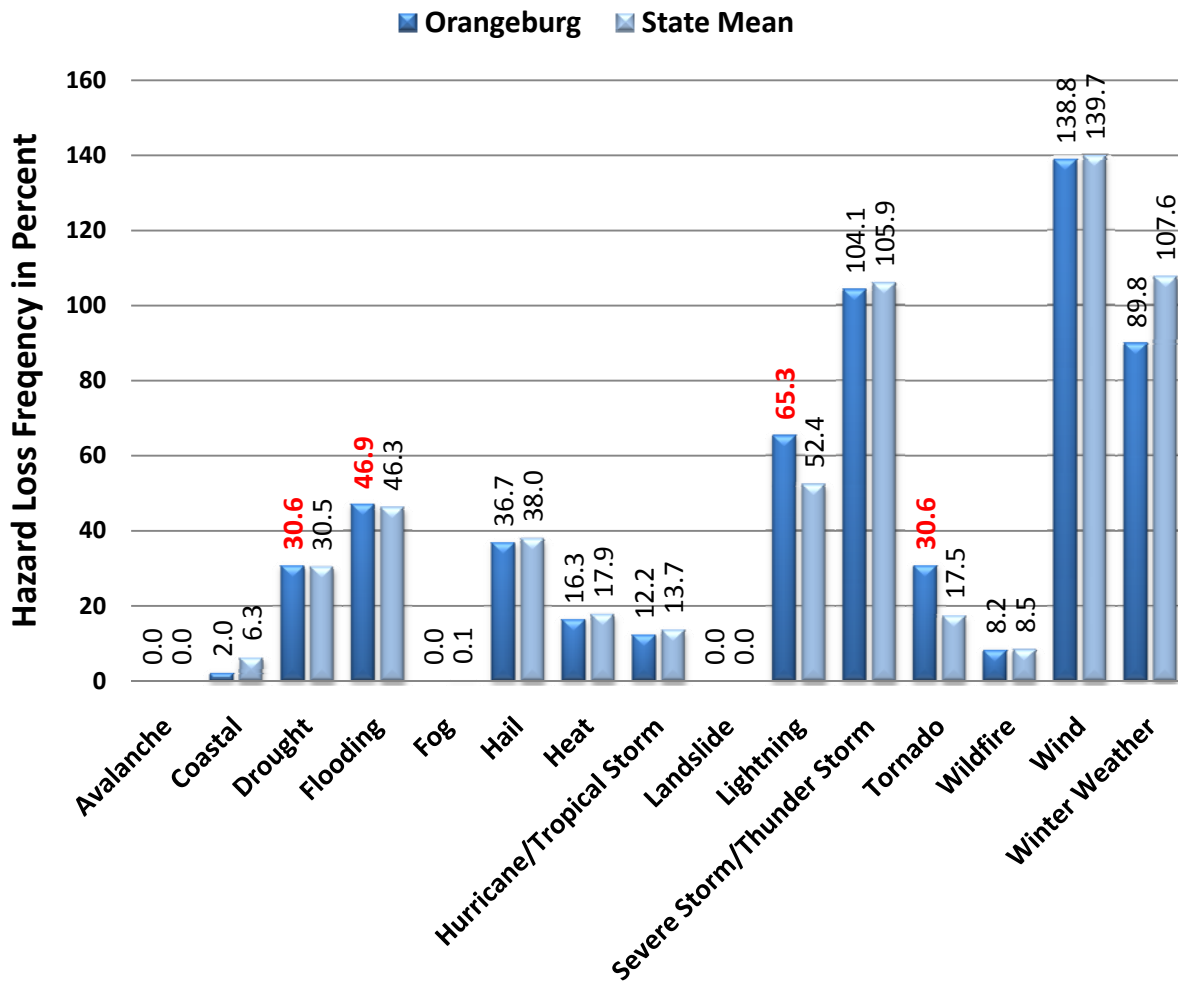


FIGURE 2. The historic loss causing hazard frequency between 1960 and 2008 for Orangeburg County compared to South Carolina as reported in SHELDUS. Percentage numbers indicated in red are when the county total exceeds the state mean. Also, a hazard that is identified in the National Climatic Data Center Storm Data reports as a multiple event hazard (flooding, winter weather, coastal storm), and given a statewide or regional location, the impact of the event is equally distributed amongst the counties involved.

Another way of determining how vulnerable a county is to particular hazards is by examining the amount of damage caused by past events. In Figure 3 (page 4), the cumulative amount of damage from 1960 to 2008 based on twelve hazard types is computed from the Hazards and Vulnerability Research Institute's SHELDUS database (available at <http://www.sheldus.org>). The historic losses in Orangeburg County exceed \$67 million, and are largely due to hurricanes and tropical storms, followed by winter weather, drought, and heat. Hurricane/tropical storm represented 27% of the losses in Orangeburg County. While significant for the county, these cumulative losses represent less than one percent of the state's overall total.

Hazard	Total Damage (in 2008 dollars)	Percent of State
Coastal	\$6,476	0.01%
Drought	\$14,058,478	2.17%
Flooding	\$679,274	0.44%
Hail	\$471,009	0.46%
Heat	\$11,286,643	2.17%
Hurricane/ Tropical Storm	\$18,314,866	0.33%
Lightning	\$1,220,358	2.32%
Severe Storm/ Thunder Storm	\$1,679,288	0.79%
Tornado	\$3,192,501	1.35%
Wildfire	\$334,042	2.09%
Wind	\$1,758,209	1.21%
Winter Weather	\$14,542,313	1.61%
<b>Orangeburg - Total</b>	<b>\$67,543,458</b>	<b>0.71%</b>

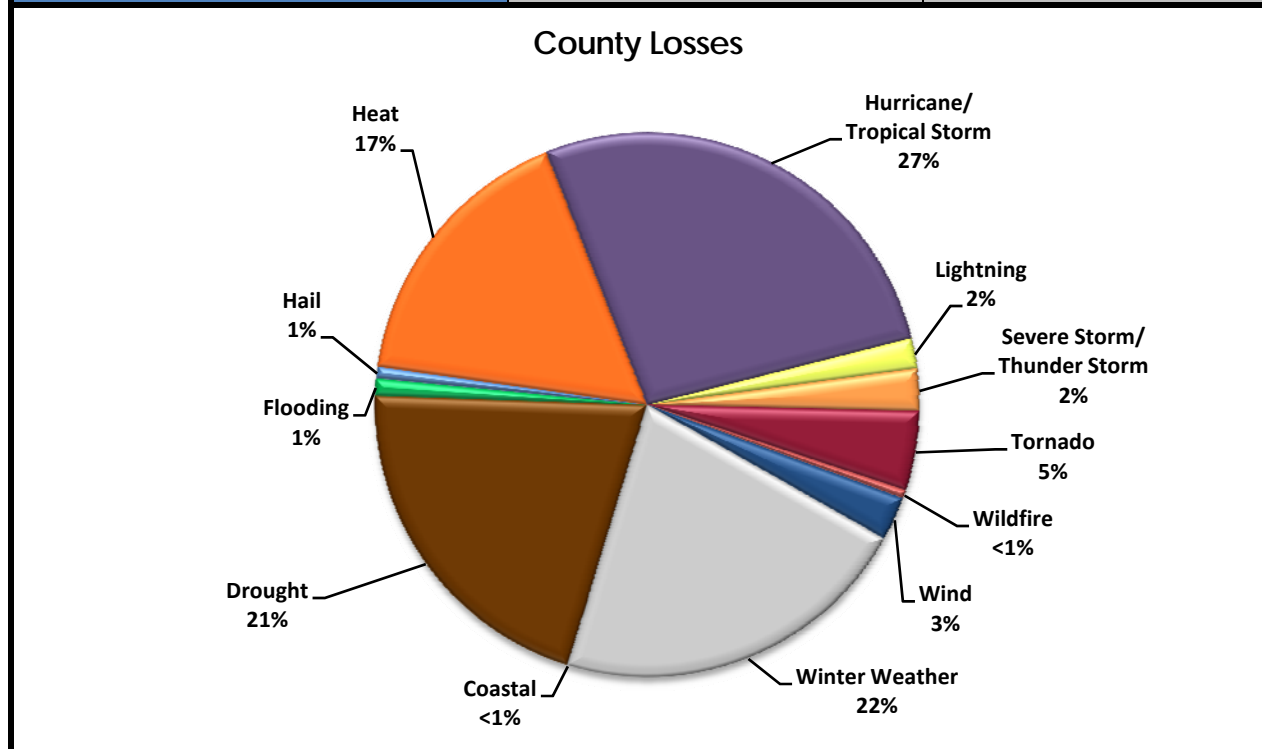


FIGURE 3. Historic Hazard Event Damages (property and crop) between 1960 and 2008 for Orangeburg County, SC.