

SCSL Digital Collections

Orangeburg, South Carolina

Item Type	Text
Publisher	South Carolina State Library
Rights	Copyright status undetermined. For more information contact, South Carolina State Library, 1500 Senate Street, Columbia, South Carolina 29201.
Download date	2024-09-28 19:13:51
Link to Item	http://hdl.handle.net/10827/370

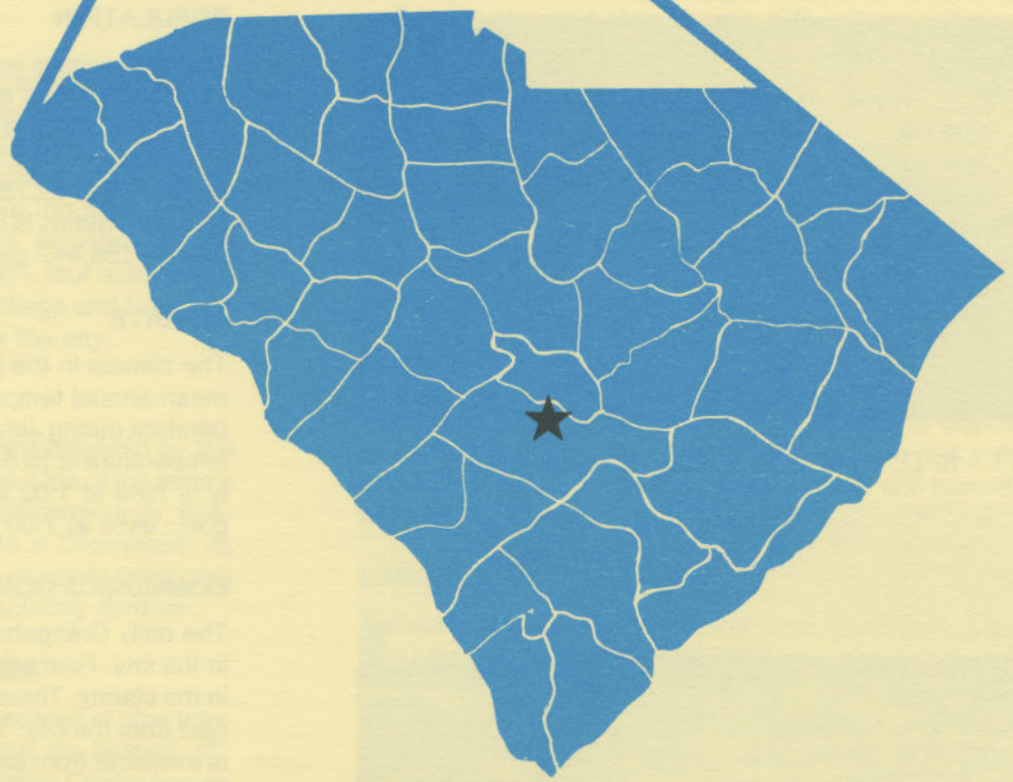
D4925
2.061

ORANGEBURG

south carolina

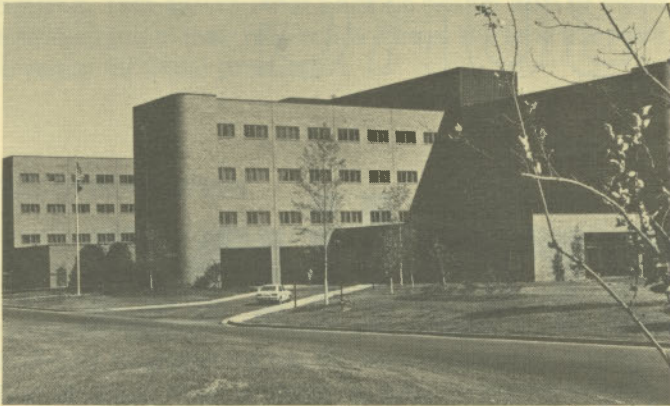


S. C. STATE LIBRARY
JAN 28 1983
STATE DOCUMENTS

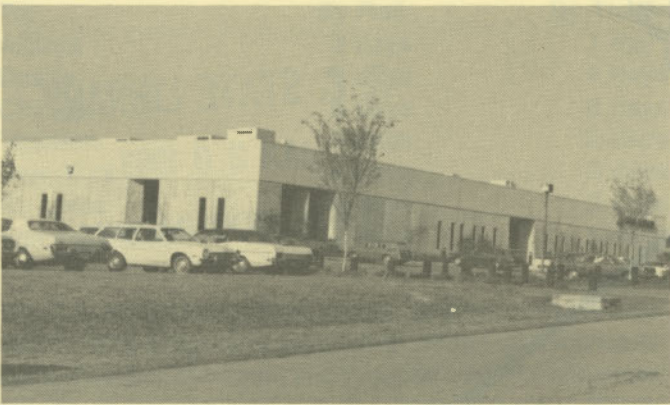


For Additional Information Contact:

SOUTH CAROLINA STATE DEVELOPMENT BOARD
P. O. Box 927, Columbia, South Carolina 29202
(803) 758-3145



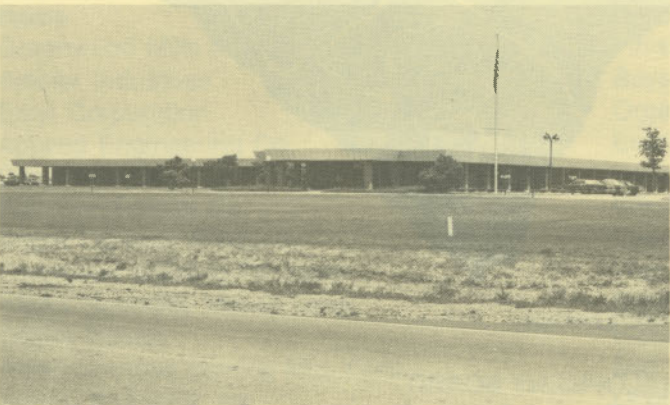
Orangeburg Regional Hospital



EG&G Rotron



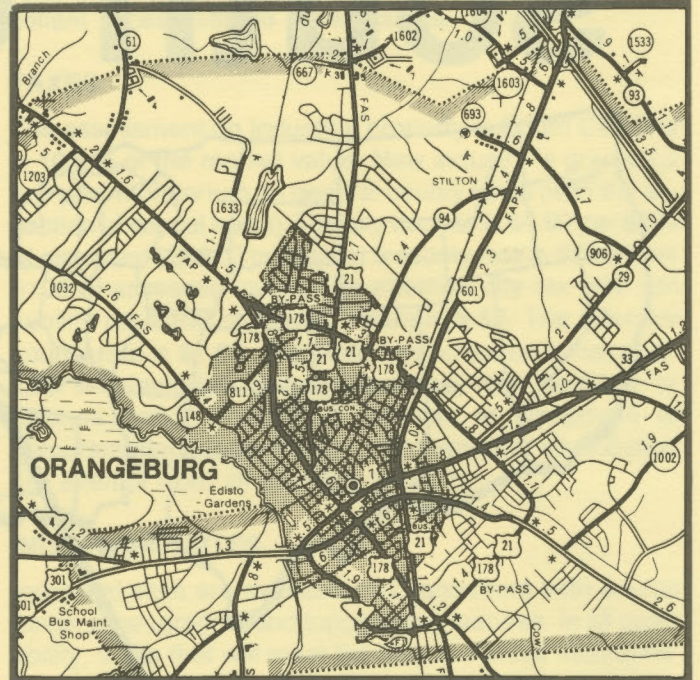
S. C. State College Administration Building



Orangeburg-Calhoun Technical College

LOCATION

As depicted on the cover, Orangeburg, seat of Orangeburg County, is in the central section of the state. Charleston, South Carolina's busiest port, is 75 miles southeast. Columbia is 40 miles northwest, and Greenville is 142 miles northwest. Orangeburg is 232 miles east of Atlanta; 726 miles south of New York; and 2,755 miles east of San Francisco.



POPULATION

The 1980 census population of the city of Orangeburg was 14,933. This was a 12.7% increase from the 1970 census of 13,252. Orangeburg County had a 1980 census population of 82,276, a 17.9% increase over the 1970 population of 69,789. The 1980 census population within a 15-mile radius is 54,750, while a 30-mile radius encompasses 158,447 people.

CLIMATE

The climate in the Orangeburg area is temperate with a mean annual temperature of 60.6° F. The average temperature during January is 42.3° F, while the average July temperature is 78.3° F. The average relative humidity daily is 78% at 1:00 a.m.; 82% at 7:00 a.m.; 54% at 1:00 p.m.; 64% at 7:00 p.m.

COMMUNICATIONS

The daily *Orangeburg Times and Democrat* is published in the city. Four other dailies and four weeklies circulate in the county. Three AM and two FM radio stations broadcast from the city. Television reception in the community is available from six stations, representing the three major networks and ETV. Cable television is available in the city. Telephone service in the community is provided by Southern Bell.

GOVERNMENT

The community has a council-administrator form of municipal government. The four city councilmen and the may-

or are elected for four-year terms. Orangeburg County is governed locally by an administrator and a seven-member county council, whose members are elected for two-year terms. An administrator is appointed by the council.

POLICE AND FIRE

The Orangeburg Police Department has 36 full-time police officers. The department operates 13 radio equipped patrol cars. The Orangeburg Fire Department has 37 full-time firemen who operate seven pumpers, two aerial ladders, and one rescue truck. Orangeburg's insurance rating is Class 5.

FINANCIAL INSTITUTIONS

Orangeburg has four banks and three savings and loan associations to serve the financial needs of the community. The banks have total assets of \$2.2 billion, while the savings and loans have assets of \$9.0 million.

HOTELS & MOTELS

The community has nine motels with over 455 overnight accommodations. Meeting and banquet facilities for large and small groups are located in the city.

CHURCHES

Orangeburg has 58 Protestant churches. A Roman Catholic church and a Jewish house of worship are located in the community.

EDUCATION

Orangeburg, which is included in Orangeburg District 5, has six elementary schools; two middle schools; one high school; and one vocational school. The student/teacher ratio is 22.1 to 1, with 285 teachers and 6,277 students. In addition, two private schools serve the area. Higher education facilities for the area are provided by the Orangeburg-Calhoun Technical College, four miles away, and by S. C. State College, Claflin College and Southern Methodist College, all located within the city.

MEDICAL SERVICES

Medical services for the community are provided by the 286-bed Orangeburg Regional Hospital. One of the state's two urological hospitals is located in the community. Specialized medical treatment is available in Charleston, 75 miles away. The community has 58 privately-practicing medical doctors and 20 privately-practicing dentists.

RECREATION AND CIVIC FACILITIES

Recreation facilities in the community consist of nine fully-equipped parks and playgrounds and six lighted, all-weather tennis courts. Hillcrest Recreation Center has an 18-hole golf course, tennis courts, baseball and football fields. An archives building houses items relating to the county's history, and is used for art exhibitions. A private country club has an 18-hole championship golf course. A bowling alley is located in the city. The city has a year-round organized recreation program and two youth cen-

ters. Five movie theatres and a little theatre dramatic group provide evening entertainment. Lake Marion, 25 miles away, provides water sports recreation.

POWER

Electric power is available through the Orangeburg Department of Public Utilities, the largest municipal utility in the state with a 300 square mile service area embracing the greater Orangeburg region. DPU, which furnishes electric power to all residents, commercial and industrial users in such service area, owns and operates its own transmission and distribution system, purchasing power under contract from South Carolina Electric & Gas Co. Service is supplied to any industrial customer without regard to maximum or minimum demands and assistance is available in establishing load requirements and determining rates.

FUELS

Natural gas is supplied by the Orangeburg Department of Public Utilities.

WATER

The community obtains its municipal water supply from North Fork Edisto River. The system is capable of supplying water at a maximum rate of 8.0 million gallons per day, with an average daily demand of 4.3 million gallons per day. Treated water storage consists of 7.6 million gallons in elevated storage and 4.75 million gallons in ground storage.

Analysis of water supplied in the community:

Total solids	60 mg/L
Alkalinity	25 mg/L
Calcium	9 mg/L
Hardness	23 mg/L
Iron	0.1 mg/L
pH	8.4

SEWER

Orangeburg has an activated sludge system to dispose of the community's waste water. The system has a designed capacity of 6.0 million gallons per day and currently averages 3.24 million gallons per day.

LABOR

Because labor information may change in this area, a current labor availability report prepared and kept up to date by the S. C. State Development Board will be furnished to prospective manufacturers at their request. The comprehensive report will include sources of recruitable labor, labor force characteristics, work force skill levels, earnings data and other pertinent information. The S. C. State Board for Technical and Comprehensive Education has the resources to recruit and train workers in accordance with a company's entry criteria. This training is at little or no cost to the employer. A lead-time schedule is developed to coordinate recruiting, testing, selecting, and

training. This assures that persons will be able to move from training to their respective jobs at the time the plant is ready for initial production.

TRANSPORTATION

Orangeburg is served by one interstate highway, I-26 (four miles), three United States highways and two South Carolina highways. The community is served by two railroads: Southern Railway and Seaboard Coast Line Railroad. Orangeburg has 39 authorized motor carriers, four of which have terminal facilities in the community.

Freight Delivery Times:

To:	By Rail:	By Truck:
Atlanta	3 days	1 day
Boston	6 days	4 days
Chicago	6 days	3 days
Houston	9 days	2 days
New York	4 days	3 days
St. Louis	6 days	2 days
San Francisco	12 days	5 days

The Columbia Metropolitan Airport, 39 miles from the community, offers regularly scheduled commercial service on Delta, Eastern, Piedmont and Freedom airlines, commuter service via Bankair, and a modern freight terminal. Private aircraft utilize Orangeburg Municipal Airport at the edge of the city which has a paved and lighted 4,500-foot runway. Services available at the local airport are oxygen, charter, hangars, tiedowns, major and minor aircraft repairs, 80 and 100LL fuel and unicom.

FOREIGN TRADE ZONES

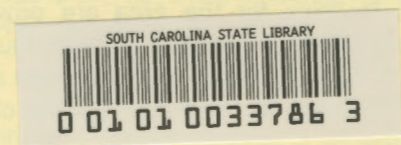
There are two Foreign Trade Zones located in South Carolina, one located in Charleston, 75 miles away, and the other located at the Greenville/Spartanburg Jetport, 142 miles away. These Foreign Trade Zones allow manufacturers to store, manufacture or process goods without paying U. S. Customs duties or worrying about quota compliance. Both Foreign Trade Zones are served by a multi-mode transportation network which provides excellent accessibility to market areas.

TAXES

The assessment on industrial property in South Carolina is 10.5% of the market value. New industry is granted a five-year moratorium on general county taxes (with the exception of school taxes). The city tax rate is \$4.90 per \$100 of assessed value. The District 5 county rate is \$15.20 per \$100 of assessed value. The effective city tax rate (tax liability per \$100 of market value) is \$.52. The effective county rate is \$1.60. The state has no tax on a manufacturer's inventories, goods-in-process, raw materials or finished goods. Treatment facilities or equipment of manufacturing plants which control water or air pollution are exempt from all property taxation.

INDUSTRIAL SITES

Industrial sites are available in Orangeburg with a wide range of geographic and topographic features. In all probability, a site that will meet the needs of most industries' requirements has been identified, catalogued, and entered into the State Development Board's Computerized Site Selection System. Detailed site information is available and will be furnished upon request.



MAJOR EMPLOYERS

Name	Product or Service	Employees
Greenwood Mills (4 plants)	Finished Cloth & Fabric	1,050
Ambler Industries	Boys Sport Coats & Pants	750
Ethyl Corporation	Organic Chemicals	550
Applied Engineering Co.	Energy Systems	450
Utica Tool Co.	Hand Tools	450
Palmetto Baking Co.	Wholesale Baking	401
Roper Outdoor Products	Lawn Mowers	380
Champion Building Products	Wall Paneling	282
AMAX Specialty Metals Corp.	Bare & Insulated Electrical Wires	250
EG&G Rotron	Electro-Mechanical Moving Devices	235
American Koyo Bearing Mfg. Corp.	Ball and Roller Bearings	233
Mayer, Rothkopf, Inc.	Double Knit, High Pile & Braiding Machinery	220