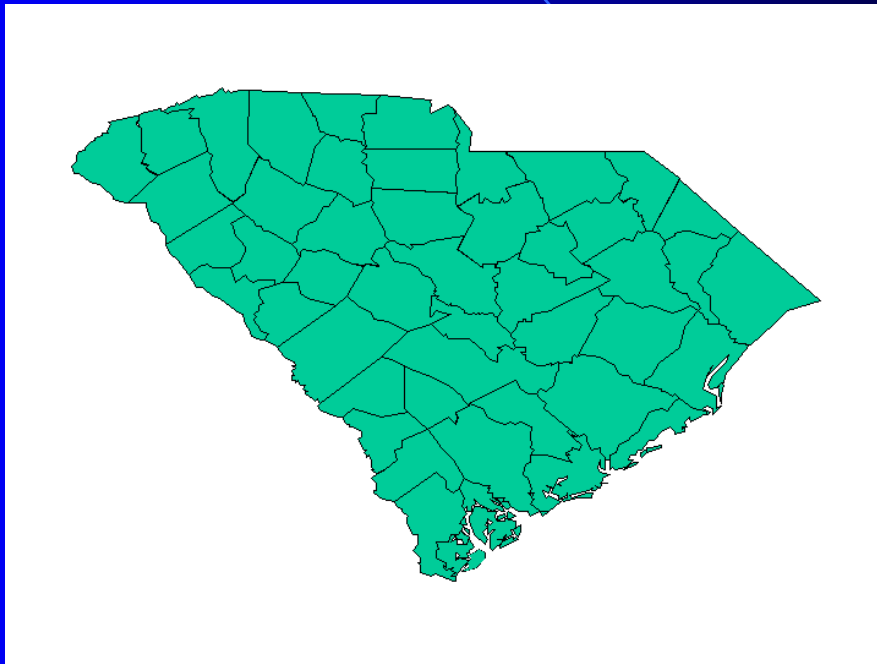


South Carolina's STD/HIV/AIDS Data



STD/HIV Division Surveillance Report December 31, 2003



**South Carolina's STD/HIV/AIDS DATA
December 31, 2003**

TABLE OF CONTENTS

| | |
|--|--------------|
| Table Use | P. 3 |
| Reported Cases of AIDS in South Carolina By Year of Diagnosis | P. 4 |
| AIDS Summary and Case Rate Map | P. 5 |
| AIDS Cases, Case Rates and Rankings by State and Metropolitan Statistical Area | P. 6 |
| AIDS Cases and Annual Rates per 100,000 Population, By County and District | P. 8 |
| AIDS Cases by Age Group, Exposure Category, and Sex | P. 10 |
| Adult/Adolescent AIDS Cases by Sex, Exposure Category, and Race | P. 11 |
| South Carolina Cumulative AIDS Summary | P. 12 |
| AIDS Cases in Adolescents and Adults Under Age 25, by Sex and Exposure Category | P. 13 |
| AIDS Cases by Year of Diagnosis and Definition Category | P. 14 |
| Reported Cases of HIV/AIDS in South Carolina by Year of Diagnosis | P. 15 |
| HIV/AIDS Case Rate Map | P. 16 |
| HIV/AIDS Cases and Annual Rates per 100,000 Population by County and District | P. 17 |
| HIV/AIDS Cases by Age Group, Exposure Category, and Sex | P. 19 |
| Adult/Adolescent HIV/AIDS Infections by Sex, Exposure Category, and Race | P. 20 |
| South Carolina Cumulative HIV/AIDS Summary | P. 21 |
| HIV/AIDS Infections in Adolescents and Adults Under Age 25, by Sex and Exposure Category | P. 22 |
| South Carolina HIV/AIDS Summary By Age Group, Race, and Sex | P. 23 |
| South Carolina Adolescent (13 - 19 Years) HIV/AIDS Summary | P. 24 |
| South Carolina Women of Childbearing Age (15-45 Years) HIV/AIDS Summary | P. 25 |
| Reported Cases of Chlamydia in South Carolina by Year of Diagnosis | P. 26 |
| Chlamydia Cases and Annual Rates per 100,000 Population, by County and District | P. 27 |
| Reported Cases of Gonorrhea in South Carolina by Year of Diagnosis | P. 29 |
| Gonorrhea Cases and Annual Rates per 100,000 Population, by County and District | P. 30 |
| Reported Cases of Total Syphilis in South Carolina by Year of Diagnosis | P. 32 |
| Total Syphilis Cases and Annual Rates per 100,000 Population, by County and District | P. 33 |
| Reported Cases of Infectious Syphilis in South Carolina by Year of Diagnosis | P. 35 |
| Infectious Syphilis Cases and Annual Rates per 100,000 Population, by County and District | P. 36 |
| Technical Notes | P. 38 |

Using These Tables

| Table 1 | | | | | | | | | |
|---|----------------------------------|--------|------|--------|------------------------|------|------------------------|------|--|
| AIDS Cases and Annual Rates per 100,000 Population By County | | | | | | | | | |
| Cumulative Totals, Prevalence Rate, Ranked by Rate and Cumulative Deaths* | | | | | | | | | |
| Incidence Rates, Diagnosed January 1 - December 31, 1999 and January 1 - December 31, 2000 | | | | | | | | | |
| County | Cumulative through June 30, 2001 | | | | Jan. 1 - Dec. 31, 1999 | | Jan. 1 - Dec. 31, 2000 | | |
| | Cases | Rate** | Rank | Deaths | Cases | Rate | Cases | Rate | |
| Abbeville | 19 | 72.6 | 46 | 10 | 4 | 16.2 | # | # | |
| Aiken | 253 | 177.5 | 29 | 143 | 15 | 11.1 | 11 | 7.7 | |
| Allendale | 37 | 330.0 | 11 | 19 | 5 | 44.2 | # | # | |
| Anderson | 189 | 114.0 | 42 | 96 | 17 | 10.4 | 16 | 9.7 | |
| Bamberg | 86 | 516.3 | 2 | 42 | 6 | 36.8 | 5 | 30.0 | |
| Barnwell | 67 | 285.4 | 15 | 35 | 5 | 23.0 | 10 | 42.6 | |
| Beaufort | 185 | 153.0 | 34 | 91 | 15 | 13.3 | 16 | 13.2 | |
| Berkeley | 189 | 132.5 | 37 | 96 | 13 | 9.1 | 16 | 11.2 | |
| Calhoun | 30 | 197.6 | 26 | 18 | # | # | # | # | |

Cumulative number of cases.

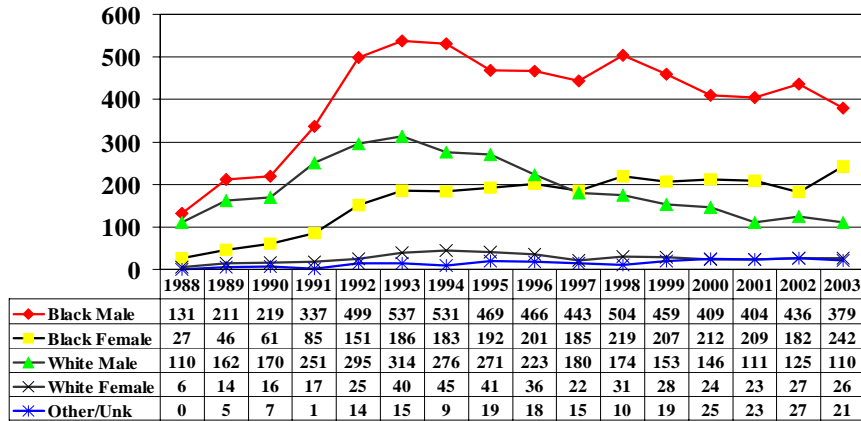
County ranking by rate since 1982.

Note if AIDS/HIV/STD case.

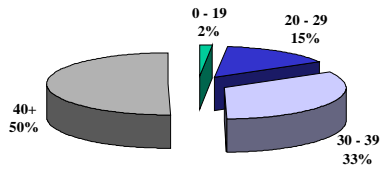
| Table 8 | | | | | | | | |
|---|------------------------|-------------|------------------------|-------------|------------------------|-------------|------------------------|-------------|
| South Carolina HIV Cases* by Age Group, Exposure Category, and Sex | | | | | | | | |
| Cases Diagnosed January - December 1999 and 2000 | | | | | | | | |
| Cumulative Totals by Age Group and Exposure Category | | | | | | | | |
| Cumulative Through June 2001 | | | | | | | | |
| Adult/adolescent exposure category*** | Males | | | | Females | | | |
| | Jan. 1 - Dec. 31, 1999 | | Jan. 1 - Dec. 31, 2000 | | Jan. 1 - Dec. 31, 1999 | | Jan. 1 - Dec. 31, 2000 | |
| | Cases | % | Cases | % | Cases | % | Cases | % |
| Men who have sex with men | 226 | 34% | 193 | 32% | N/A | | N/A | |
| Injecting drug use | 67 | 10% | 53 | 9% | 26 | 8% | 29 | 9% |
| Men who have sex with men & inject drugs | 13 | 2% | 9 | 1% | N/A | | N/A | |
| Hemophilia/coagulation disorder | - | 0% | - | 0% | - | 0% | 2 | 1% |
| Heterosexual contact: | 149 | 23% | 116 | 19% | 192 | 62% | 149 | 48% |
| Sx w/ injecting drug user | 19 | | 5 | | 26 | | 15 | |
| Sx w/ bisexual male | N/A | | N/A | | 7 | | 6 | |
| Sx w/ person with hemophilia | 2 | | - | | 1 | | 1 | |
| Sx w/ transfusion recipient w/HIV | 1 | | - | | 1 | | - | |
| Sx w/HIV+ person, risk not specified | 127 | | 111 | | 157 | | 127 | |
| Receipt of blood transfusion/components | 4 | 1% | - | 0% | 2 | 1% | 2 | 1% |
| Undetermined | 199 | 30% | 236 | 39% | 121 | 39% | 130 | 42% |
| Confirmed Other | - | 0% | - | 0% | - | 0% | - | 0% |
| Adult/adolescent subtotal | 658 | 100% | 607 | 100% | 341 | 100% | 312 | 100% |

These figures are a breakdown of the heterosexual contacts. They are included in the total.

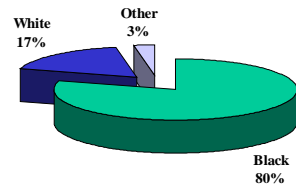
South Carolina AIDS Cases by Year of Diagnosis by Race and Sex



By Age Group
2003 Cases



By Race
2003 Cases



**South Carolina Department of Health and Environmental Control
STD/HIV Division
HIV Quarterly Surveillance Report**

HIV Surveillance Program

December 31, 2003

Telephone: (803) 898-0749

For assistance in reporting cases of AIDS or HIV in South Carolina, call DHEC toll-free at 1-800-277-0873. Refer to the last page of this report for other hotline numbers. By South Carolina statute, physicians, laboratories, health care institutions, and others must report HIV infections and AIDS cases to DHEC.

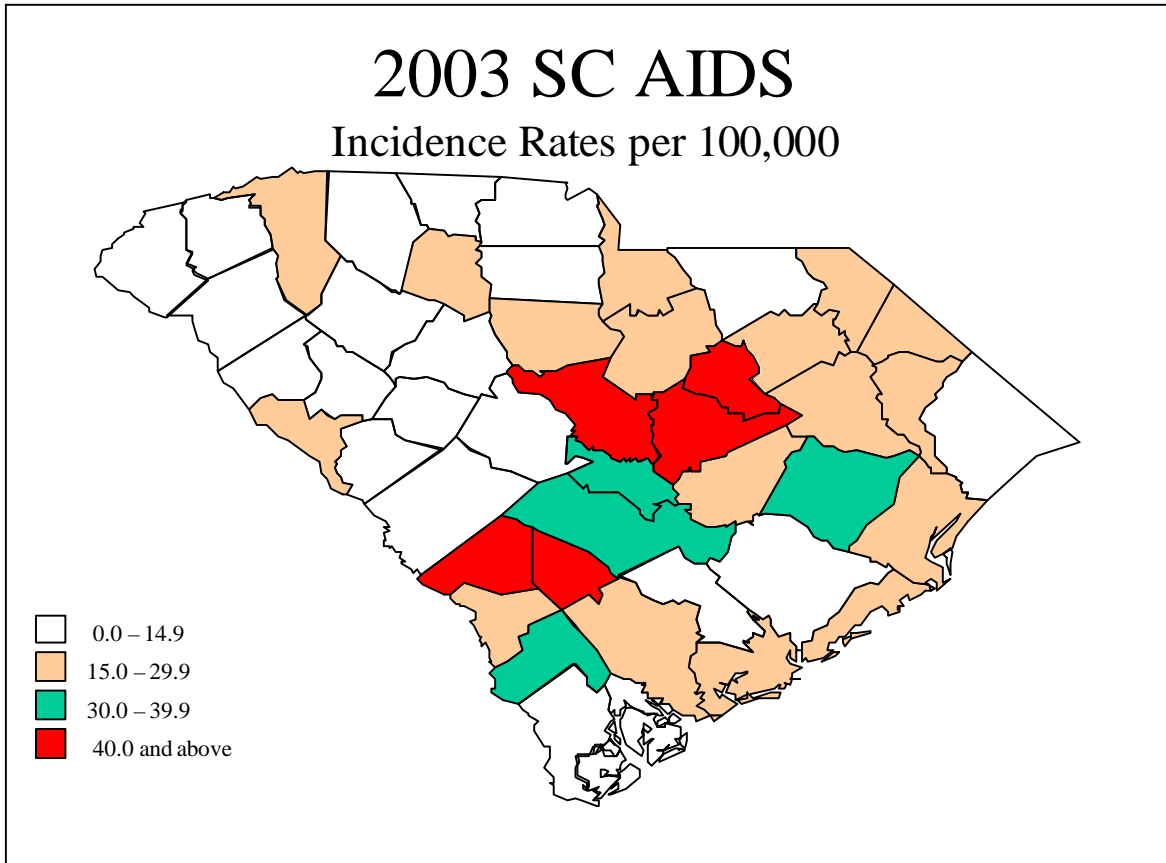
Cumulative Totals

Total AIDS Cases in South Carolina

| | |
|-------------------------------------|--------|
| January 1, 1981 - December 31, 2003 | 13,213 |
| Total Living AIDS Cases | 7,057 |
| Total Deceased AIDS Cases | 6,156 |

Total HIV Infections in South Carolina (includes total number of AIDS Cases)

| | |
|--------------------------------------|--------|
| February 1, 1986 - December 31, 2003 | 19,462 |
|--------------------------------------|--------|



**AIDS Cases, Annual Rates and Ranking by State
United States
January 1 - December 31, 2002 and Cumulative Data**

| Rank | State of Residence | Cumulative through 2002 | | | | |
|----------|------------------------------|-------------------------|-------------|----------------------|--------------|----------------|
| | | January - December 2002 | | Adult/ Adolescent | Pediatric | Total |
| | | Cases | Rate | | | |
| 1 | District of Columbia | 927 | 162.4 | 14,707 | 175 | 14,882 |
| 2 | New York | 6,664 | 34.8 | 153,457 | 2,298 | 155,755 |
| 3 | Maryland | 1,854 | 34.0 | 25,045 | 313 | 25,358 |
| 4 | Florida | 5,058 | 30.3 | 88,760 | 1,473 | 90,233 |
| 5 | Louisiana | 1,167 | 26.0 | 14,494 | 130 | 14,624 |
| 6 | Delaware | 193 | 23.9 | 2,995 | 24 | 3,019 |
| 7 | <i>South Carolina</i> | 833 | 20.3 | 10,967 | 88 | 11,055 |
| 8 | Connecticut | 618 | 17.9 | 12,588 | 177 | 12,765 |
| 9 | Georgia | 1,471 | 17.2 | 25,795 | 213 | 26,008 |
| 10 | Illinois | 2,108 | 16.7 | 28,149 | 277 | 28,426 |
| | | | | | | |
| | United States | 43,950 | 15.0 | 849,780 | 9,220 | 859,000 |

Data Source: Centers for Disease Control and Prevention. *HIV/AIDS Surveillance Report*; 2002;14: 27-28.

<http://www.cdc.gov/hiv/stats/hasrlink.htm>

**AIDS Cases, Annual Rates and Ranking by Metropolitan Statistical Area
United States
January 1, - December 31, 2002 and Cumulative Data**

| Rank | Metropolitan Area of Residence | January - December 2002 | | Cumulative through 2002 | | |
|-----------|-------------------------------------|-------------------------|-------------|-------------------------|--------------|----------------|
| | | Cases | Rate | Adult/ Adolescent | Pediatric | Total |
| 1 | New York, NY | 5,682 | 60.4 | 129,811 | 2,057 | 131,868 |
| 2 | Miami, FL | 1,154 | 49.5 | 25,998 | 495 | 26,493 |
| 3 | Baton Rouge, LA | 304 | 49.5 | 2,410 | 20 | 2,430 |
| 4 | Baltimore, MD | 1,267 | 48.7 | 16,817 | 215 | 17,032 |
| 5 | West Palm Beach-Boca Raton, FL | 578 | 48.6 | 8,455 | 223 | 8,678 |
| 6 | Fort Lauderdale, FL | 753 | 44.1 | 14,067 | 252 | 14,319 |
| 7 | New Orleans, LA | 522 | 39.1 | 7,696 | 70 | 7,766 |
| 8 | Columbia, SC | 207 | 37.5 | 2,406 | 18 | 2,424 |
| 9 | San Juan-Bayamon, PR | 707 | 35.5 | 16,823 | 246 | 17,069 |
| 10 | Washington, DC-MD-VA-WV | 1,829 | 35.4 | 26,359 | 298 | 26,657 |
| | | | | | | |
| 18 | Charleston, SC | 141 | 25.1 | 1,746 | 14 | 1,760 |
| | | | | | | |
| 78 | Grnvl., Sptbrg., Andrsn., SC | 78 | 7.9 | 1,682 | 7 | 1,689 |
| | | | | | | |
| | | | | | | |
| | United States | 43,790 | 15.0 | 848,317 | 9,199 | 857,516 |

Data Source: Centers for Disease Control and Prevention. *HIV/AIDS Surveillance Report*; 2002;14: Addendum Table A5.
<http://www.cdc.gov/hiv/stats/hasrlink.htm>

| Table 1 | | | | | | | | |
|--|--------------------------------------|--------------|------------|--------------|------------------------|-------------|------------------------|-------------|
| AIDS Cases and Annual Rates per 100,000 Population By County | | | | | | | | |
| Cumulative Totals, Prevalence Rate, Ranked by Rate, and Cumulative Deaths* | | | | | | | | |
| Incidence Rates, Diagnosed January 1 - December 31, 2002 and January 1 - December 31, 2003 | | | | | | | | |
| County | Cumulative through December 31, 2003 | | | | Jan. 1 - Dec. 31, 2002 | | Jan. 1 - Dec. 31, 2003 | |
| | Cases | Rate** | Rank | Deaths | Cases | Rate | Cases | Rate |
| Abbeville | 27 | 101.8 | 44 | 10 | 5 | 19 | . | . |
| Aiken | 294 | 196.8 | 30 | 155 | 19 | 12.9 | 10 | 6.7 |
| Allendale | 41 | 354.4 | 14 | 21 | . | . | . | . |
| Anderson | 226 | 133.3 | 42 | 109 | 12 | 7.1 | 15 | 8.8 |
| Bamberg | 98 | 599.8 | 2 | 46 | . | . | 8 | 49 |
| Barnwell | 93 | 387.5 | 11 | 41 | 4 | 16.8 | 12 | 50 |
| Beaufort | 220 | 171.8 | 35 | 106 | 12 | 9.5 | 14 | 10.9 |
| Berkeley | 227 | 150.3 | 41 | 109 | 19 | 12.8 | 9 | 6.0 |
| Calhoun | 41 | 265.9 | 20 | 21 | . | . | 5 | 32 |
| Charleston | 1,412 | 446.8 | 6 | 732 | 59 | 18.8 | 69 | 21.8 |
| Cherokee | 66 | 122.5 | 43 | 32 | . | . | 4 | 7 |
| Chester | 52 | 151.1 | 40 | 24 | 5 | 14.6 | . | . |
| Chesterfield | 75 | 174.5 | 34 | 40 | 7 | 16 | . | . |
| Clarendon | 145 | 439.7 | 8 | 63 | 12 | 36.6 | 7 | 21.2 |
| Colleton | 145 | 369.4 | 12 | 67 | 11 | 28.3 | 8 | 20.4 |
| Darlington | 221 | 326.4 | 17 | 104 | 20 | 29.6 | 19 | 28.1 |
| Dillon | 86 | 282.7 | 19 | 44 | 14 | 46 | 6 | 20 |
| Dorchester | 213 | 207.8 | 27 | 101 | 13 | 12.9 | 13 | 12.7 |
| Edgefield | 63 | 250.7 | 22 | 30 | . | . | . | . |
| Fairfield | 57 | 238.1 | 23 | 26 | 5 | 21 | 4 | 17 |
| Florence | 460 | 358.3 | 13 | 219 | 42 | 32.9 | 29 | 22.6 |
| Georgetown | 188 | 328.1 | 16 | 88 | 9 | 15.8 | 12 | 20.9 |
| Greenville | 895 | 229.3 | 25 | 460 | 35 | 9.0 | 65 | 16.7 |
| Greenwood | 134 | 198.0 | 29 | 61 | 6 | 8.9 | 10 | 14.8 |
| Hampton | 65 | 300.4 | 18 | 27 | . | . | 8 | 37 |
| Horry | 493 | 236.8 | 24 | 219 | 31 | 15.2 | 24 | 11.5 |
| Jasper | 89 | 421.6 | 9 | 42 | . | . | . | . |
| Kershaw | 144 | 265.5 | 21 | 71 | 8 | 14.9 | 7 | 12.9 |
| Lancaster | 104 | 168.6 | 36 | 54 | 6 | 9.7 | 11 | 17.8 |
| Laurens | 119 | 166.4 | 37 | 60 | 9 | 12.7 | 7 | 9.8 |
| Lee | 70 | 343.6 | 15 | 28 | 4 | 19.7 | 10 | 49.1 |
| Lexington | 424 | 187.4 | 32 | 177 | 30 | 13.5 | 23 | 10.2 |
| Marion | 147 | 411.3 | 10 | 74 | 5 | 14.0 | 6 | 16.8 |
| Marlboro | 126 | 443.8 | 7 | 53 | 4 | 14.0 | 5 | 17.6 |
| McCormick | 23 | 221.4 | 26 | 7 | . | . | . | . |
| Newberry | 68 | 184.7 | 33 | 33 | 6 | 16 | 4 | 11 |
| Oconee | 60 | 86.9 | 46 | 30 | 5 | 7 | . | . |
| Orangeburg | 450 | 482.9 | 4 | 233 | 32 | 34.5 | 30 | 32.2 |
| Pickens | 113 | 97.6 | 45 | 51 | 7 | 6.1 | 4 | 3.5 |
| Richland | 2,203 | 673.0 | 1 | 925 | 175 | 53.8 | 145 | 44.3 |
| Saluda | 39 | 202.0 | 28 | 15 | . | . | . | . |
| Spartanburg | 509 | 194.3 | 31 | 240 | 22 | 8.5 | 27 | 10.3 |
| Sumter | 539 | 494.1 | 3 | 244 | 37 | 34.4 | 44 | 40.3 |
| Union | 47 | 157.8 | 38 | 22 | . | . | 6 | 20 |
| Williamsburg | 173 | 466.8 | 5 | 85 | 9 | 24.3 | 13 | 35.1 |
| York | 264 | 153.2 | 39 | 115 | 16 | 9.4 | 19 | 11.0 |
| Not Reported | 10 | N/A | N/A | 5 | . | N/A | . | N/A |
| Out-of-State | 1,455 | N/A | N/A | 637 | 65 | N/A | 46 | N/A |
| | | | | | | | | |
| Total | 13,213 | 319.5 | N/A | 6,156 | 797 | 19.6 | 778 | 19.0 |

* Cells with 3 or fewer cases are set to missing (.)

** Case rate per 100,000 population based on census estimates. This is a prevalence rate and is based on the cumulative number of AIDS cases. See technical notes.

Note: Data in this quarterly report are provisional

| Table 1a | | | | | | | | |
|--|--------------------------------------|--------------|------------|--------------|------------------------|-------------|------------------------|-------------|
| AIDS Cases and Annual Rates per 100,000 Population By District | | | | | | | | |
| Cumulative Totals, Prevalence Rate, Ranked by Rate and Cumulative Deaths* | | | | | | | | |
| Incidence Rates, Diagnosed January 1 - December 31, 2002 and January 1 - December 31, 2003 | | | | | | | | |
| County | Cumulative through December 31, 2003 | | | | Jan. 1 - Dec. 31, 2002 | | Jan. 1 - Dec. 31, 2003 | |
| | Cases | Rate** | Rank | Deaths | Cases | Rate | Cases | Rate |
| Appalachia I | 286 | 119.9 | 13 | 139 | 17 | 7.2 | 16 | 6.7 |
| Appalachia II | 1008 | 199.2 | 9 | 511 | 42 | 8.4 | 69 | 13.6 |
| Appalachia III | 622 | 180.0 | 11 | 294 | 26 | 7.6 | 37 | 10.7 |
| Catawba | 420 | 156.5 | 12 | 193 | 27 | 10.2 | 32 | 11.9 |
| Edisto | 589 | 471.4 | 1 | 300 | 35 | 28.1 | 43 | 34.4 |
| Low Country | 519 | 247.1 | 7 | 242 | 28 | 13.5 | 33 | 15.7 |
| Lower Savannah | 428 | 231.4 | 8 | 217 | 24 | 13.2 | 25 | 13.5 |
| Palmetto | 2,752 | 448.0 | 2 | 1,161 | 216 | 35.5 | 176 | 28.6 |
| Pee Dee | 1,115 | 334.2 | 4 | 534 | 92 | 27.7 | 68 | 20.4 |
| Trident | 1,852 | 325.1 | 5 | 942 | 91 | 16.2 | 91 | 16.0 |
| Upper Savannah | 405 | 183.7 | 10 | 183 | 24 | 11.0 | 25 | 11.3 |
| Waccamaw | 854 | 282.3 | 6 | 392 | 49 | 16.4 | 49 | 16.2 |
| Wateree | 898 | 414.5 | 3 | 406 | 61 | 28.4 | 68 | 31.4 |
| Total | 13,213 | 319.5 | N/A | 6,156 | 797 | 19.6 | 778 | 19.0 |
| * Cells with 3 or fewer cases are set to missing (.) | | | | | | | | |
| ** Case rate per 100,000 population based on census estimates. This is a prevalence rate and is based on the cumulative number of AIDS cases. See technical notes. | | | | | | | | |
| Note: Data in this quarterly report are provisional | | | | | | | | |

Table 2
South Carolina AIDS Cases by Age Group, Exposure Category, and Sex
Cases Diagnosed January 1 - December 31, 2002 and January 1 - December 31, 2003
Cumulative* Totals by Age Group and Exposure Category
Cumulative Through December 31, 2003

| Adult/adolescent exposure category*** | Males | | | | Females | | | | Totals** | | | | Cumulative Total | |
|--|------------------------|-------------|------------------------|-------------|------------------------|-------------|------------------------|-------------|------------------------|-------------|------------------------|-------------|------------------|-------------|
| | Jan. 1 - Dec. 31, 2002 | | Jan. 1 - Dec. 31, 2003 | | Jan. 1 - Dec. 31, 2002 | | Jan. 1 - Dec. 31, 2003 | | Jan. 1 - Dec. 31, 2002 | | Jan. 1 - Dec. 31, 2003 | | Cases | % |
| | Cases | % | Cases | % | Cases | % | Cases | % | Cases | % | Cases | % | Cases | % |
| Men who have sex with men | 214 | 37% | 188 | 38% | N/A | | N/A | | 214 | 27% | 188 | 24% | 4,773 | 37% |
| Injecting drug use | 58 | 10% | 51 | 10% | 23 | 11% | 20 | 7% | 81 | 10% | 71 | 9% | 2,218 | 17% |
| Men who have sex with men & inject drugs | 22 | 4% | 21 | 4% | N/A | | N/A | | 22 | 3% | 21 | 3% | 687 | 5% |
| Hemophilia/coagulation disorder | 0 | 0% | | 0% | 0 | 0% | 0 | 0% | 0 | 0% | 1 | 0% | 62 | 0% |
| Heterosexual contact: | 116 | 20% | 98 | 20% | 125 | 59% | 159 | 59% | 241 | 30% | 257 | 33% | 2,988 | 23% |
| Sx w/ injecting drug user | 11 | | 7 | | 16 | | 18 | | 27 | | 25 | | 732 | |
| Sx w/ bisexual male | N/A | | N/A | | 3 | | 13 | | 3 | | 13 | | 121 | |
| Sx w/ person with hemophilia | 0 | | 0 | | 0 | | 1 | | 0 | | 1 | | 13 | |
| Sx w/ transfusion recipient w/HIV | 0 | | 1 | | 2 | | 2 | | 2 | | 3 | | 26 | |
| Sx w/HIV+ person, risk not specified | 105 | | 90 | | 104 | | 125 | | 209 | | 215 | | 2,096 | |
| Receipt of blood transfusion/components | 6 | 1% | 0 | 0% | 1 | 0% | 0 | 0% | 7 | 1% | 0 | 0% | 133 | 1% |
| Undetermined | 162 | 28% | 142 | 28% | 64 | 30% | 91 | 34% | 226 | 29% | 233 | 30% | 2,214 | 17% |
| Confirmed Other | 0 | 0% | 0 | 0% | 0 | 0% | 0 | 0% | 0 | 0% | 0 | 0% | 1 | 0% |
| Adult/adolescent subtotal | 578 | 100% | 501 | 100% | 213 | 100% | 270 | 100% | 791 | 100% | 771 | 100% | 13,076 | 100% |
| Pediatric (<13 years old) exposure category*** | | | | | | | | | | | | | | |
| Hemophilia/coagulation disorder | 0 | 0% | 0 | 0% | 0 | 0% | 0 | 0% | 0 | 0% | 0 | 0% | 10 | 7% |
| Mother with/at risk for HIV infection: | 3 | 100% | 2 | 67% | 3 | 100% | 4 | 100% | 6 | 100% | 6 | 86% | 121 | 88% |
| Injecting drug use | 1 | | 0 | | 0 | | 1 | | 1 | | 1 | | 38 | |
| Sx w/ injecting drug user | 0 | | 0 | | 0 | | 0 | | 0 | | 0 | | 15 | |
| Sx w/ bisexual male | 0 | | 0 | | 0 | | 0 | | 0 | | 0 | | 4 | |
| Sx w/ person with hemophilia | 0 | | 0 | | 0 | | 0 | | 0 | | 0 | | 1 | |
| Sx w/ HIV+ person, risk not specified | 1 | | 1 | | 2 | | 1 | | 3 | | 2 | | 19 | |
| Receipt of blood transfusion, components | 0 | | 0 | | 0 | | 0 | | 0 | | 0 | | 4 | |
| Has HIV infection, risk not specified | 1 | | 1 | | 1 | | 2 | | 2 | | 3 | | 40 | |
| Receipt of blood transfusion, components | 0 | 0% | 1 | 33% | 0 | 0% | 0 | 0% | 0 | 0% | 1 | 14% | 4 | 3% |
| Undetermined | 0 | 0% | 0 | 0% | 0 | 0% | 0 | 0% | 0 | 0% | 0 | 0% | 2 | 1% |
| Pediatric subtotal | 3 | 100% | 3 | 100% | 3 | 100% | 4 | 100% | 6 | 100% | 7 | 100% | 137 | 100% |
| Total | 581 | | 504 | | 216 | | 274 | | 797 | | 778 | | 13,213 | |

* Data are cumulative from January, 1981.

** Totals may include individuals for whom sex categorization is unknown.

*** See Technical Notes for information on age group and exposure categories.

Note: Data in this quarterly report are provisional.

Table 3

South Carolina Adult/Adolescent AIDS Cases by Sex, Exposure Category, and Race

Cases Diagnosed between January 1 - December 31, 2003 and Cumulative* Totals Through December 31, 2003

| All Sexes | White | | | | African American | | | | Totals** | | | |
|--|------------------|-------------|--------------|-------------|------------------|-------------|--------------|-------------|------------------|-------------|---------------|-------------|
| | Jan. - Dec. 2003 | | Cumulative | | Jan. - Dec. 2003 | | Cumulative | | Jan. - Dec. 2003 | | Cumulative | |
| | Cases | % | Cases | % | Cases | % | Cases | % | Cases | % | Cases | % |
| Exposure category*** | | | | | | | | | | | | |
| Men who have sex with men | 61 | 46% | 2,214 | 60% | 126 | 20% | 2,502 | 27% | 188 | 24% | 4,773 | 37% |
| Injecting drug use | 17 | 13% | 369 | 10% | 53 | 9% | 1,809 | 20% | 71 | 9% | 2,218 | 17% |
| Men who have sex with men & inject drugs | 10 | 7% | 259 | 7% | 11 | 2% | 420 | 5% | 21 | 3% | 687 | 5% |
| Hemophilia/coagulation disorder | 1 | 1% | 48 | 1% | 0 | 0% | 12 | 0% | 1 | 0% | 62 | 0% |
| Heterosexual contact: | 15 | 11% | 346 | 9% | 237 | 38% | 2,592 | 28% | 257 | 33% | 2,988 | 23% |
| Sex with injecting drug user | 3 | | 93 | | 21 | | 630 | | 25 | | 732 | |
| Sex with bisexual male | 0 | | 32 | | 13 | | 88 | | 13 | | 121 | |
| Sex with person with hemophilia | 1 | | 7 | | 0 | | 6 | | 1 | | 13 | |
| Sex with transfusion recipient with HIV | 0 | | 7 | | 3 | | 19 | | 3 | | 26 | |
| Sex with HIV+ person, risk not specified | 11 | | 207 | | 200 | | 1,849 | | 215 | | 2,096 | |
| Receipt of blood transfusion/components | 0 | 0% | 49 | 1% | 0 | 0% | 82 | 1% | 0 | 0% | 133 | 1% |
| Undetermined | 30 | 22% | 380 | 10% | 189 | 31% | 1,765 | 19% | 233 | 30% | 2,214 | 17% |
| Confirmed Other | 0 | 0% | 1 | 0% | 0 | 0% | 0 | 0% | 0 | 0% | 1 | 0% |
| Total | 134 | 100% | 3,666 | 100% | 616 | 100% | 9,182 | 100% | 771 | 100% | 13,076 | 100% |
| Males | | | | | | | | | | | | |
| Exposure Category*** | | | | | | | | | | | | |
| Men who have sex with men | 61 | 56% | 2,214 | 68% | 126 | 33% | 2,502 | 38% | 188 | 38% | 4,773 | 48% |
| Injecting drug use | 13 | 12% | 267 | 8% | 37 | 10% | 1,360 | 21% | 51 | 10% | 1,657 | 17% |
| Men who have sex with men & inject drugs | 10 | 9% | 259 | 8% | 11 | 3% | 420 | 6% | 21 | 4% | 687 | 7% |
| Hemophilia/coagulation disorder | 1 | 1% | 45 | 1% | 0 | 0% | 10 | 0% | 1 | 0% | 57 | 1% |
| Heterosexual contact: | 3 | 3% | 126 | 4% | 91 | 24% | 1,085 | 16% | 98 | 20% | 1,238 | 12% |
| Sx w/ injecting drug user | 1 | | 31 | | 5 | | 214 | | 7 | | 249 | |
| Sx w/ person with hemophilia | 0 | | 2 | | 0 | | 4 | | 0 | | 6 | |
| Sx w/ transfusion recipient w/HIV | 0 | | 0 | | 1 | | 10 | | 1 | | 10 | |
| Sx w/HIV+ person, risk not specified | 2 | | 93 | | 85 | | 857 | | 90 | | 973 | |
| Receipt of blood transfusion/components | 0 | 0% | 34 | 1% | 0 | 0% | 46 | 1% | 0 | 0% | 82 | 1% |
| Undetermined | 21 | 19% | 305 | 9% | 112 | 30% | 1,182 | 18% | 142 | 28% | 1,541 | 15% |
| Total | 109 | 100% | 3,250 | 100% | 377 | 100% | 6,605 | 100% | 501 | 100% | 10,035 | 100% |
| Females | | | | | | | | | | | | |
| Exposure Category*** | | | | | | | | | | | | |
| Injecting drug use | 4 | 16% | 102 | 25% | 16 | 7% | 449 | 17% | 20 | 7% | 561 | 18% |
| Hemophilia/coagulation disorder | 0 | 0% | 3 | 1% | 0 | 0% | 2 | 0% | 0 | 0% | 5 | 0% |
| Heterosexual contact: | 12 | 48% | 220 | 53% | 146 | 61% | 1,507 | 58% | 159 | 59% | 1,750 | 58% |
| Sx w/ injecting drug user | 2 | | 62 | | 16 | | 416 | | 18 | | 483 | |
| Sx w/ bisexual male | 0 | | 32 | | 13 | | 88 | | 13 | | 121 | |
| Sx w/ person with hemophilia | 1 | | 5 | | 0 | | 2 | | 1 | | 7 | |
| Sx w/ transfusion recipient w/HIV | 0 | | 7 | | 2 | | 9 | | 2 | | 16 | |
| Sx w/HIV+ person, risk not specified | 9 | | 114 | | 115 | | 992 | | 125 | | 1,123 | |
| Receipt of blood transfusion/components | 0 | 0% | 15 | 4% | 0 | 0% | 36 | 1% | 0 | 0% | 51 | 2% |
| Undetermined | 9 | 36% | 75 | 18% | 77 | 32% | 583 | 23% | 91 | 34% | 673 | 22% |
| Confirmed Other | 0 | 0% | 1 | 0% | 0 | 0% | 0 | 0% | 0 | 0% | 1 | 0% |
| Total | 25 | 100% | 416 | 100% | 239 | 100% | 2,577 | 100% | 270 | 100% | 3,041 | 100% |

* Data are cumulative from January, 1981.

** Totals include individuals of other and unknown race groups.

*** See Technical Notes for information on exposure categories.

Note: Data in this quarterly report are provisional.

| Table 4 | | | | | | |
|---|---|---------------|------------------------|---------------|---------------|---------------|
| South Carolina Cumulative AIDS Summary* Through December 31, 2003** | | | | | | |
| | Adult/Adolescent | | Pediatric (<=12 years) | | Total | |
| Race/Ethnicity | Cases | % | Cases | % | Cases | % |
| White, Not Hispanic | 3,674 | 28.0% | 16 | 14.4% | 3,690 | 27.9% |
| Black, Not Hispanic | 9,200 | 70.2% | 90 | 81.1% | 9,290 | 70.3% |
| Hispanic | 182 | 1.4% | 5 | 4.5% | 187 | 1.4% |
| Asian/Pacific Islander | 22 | 0.2% | 0 | 0.0% | 22 | 0.2% |
| American Indian/Alaskan | 14 | 0.1% | 0 | 0.0% | 14 | 0.1% |
| Unknown | 10 | 0.1% | 0 | 0.0% | 10 | 10.0% |
| Total | 13,102 | 100.0% | 111 | 100.0% | 13,213 | 100.0% |
| Age at Diagnosis*** | Race | | | | | |
| | Other races are shown in totals but not shown on report | | | | | |
| | White | | Black | | Total | |
| | Cases | % | Cases | % | Cases | % |
| | Under 5 | 12 | 0.3% | 68 | 0.7% | 84 |
| 5 - 12 | 4 | 0.1% | 22 | 0.2% | 27 | 0.2% |
| 13-19 | 20 | 0.5% | 90 | 1.0% | 113 | 0.9% |
| 20-29 | 699 | 18.9% | 1,671 | 18.0% | 2,426 | 18.4% |
| 30-39 | 1,675 | 45.4% | 3,828 | 41.2% | 5,608 | 42.4% |
| 40-49 | 878 | 23.8% | 2,571 | 27.7% | 3,490 | 26.4% |
| Over 49 | 402 | 10.9% | 1,040 | 11.2% | 1,465 | 11.1% |
| Total | 3,690 | 100.0% | 9,290 | 100.0% | 13,213 | 100.0% |
| Adult/Adolescent Mode Of Transmission | Exposure Category by Sex | | | | | |
| Exposure Categories*** | Males | | Females | | Total | |
| | Cases | % | Cases | % | Cases | % |
| Men Who Have Sex With Men | 4,773 | 47.6% | N/A | N/A | 4,773 | 36.5% |
| Injecting Drug Use | 1,657 | 16.5% | 561 | 18.4% | 2,218 | 17.0% |
| Men Who Have Sex With Men & Inject Drugs | 687 | 6.8% | N/A | N/A | 687 | 5.3% |
| Hemophilia/Coagulation Disorder | 57 | 0.6% | 5 | 0.2% | 62 | 0.5% |
| Heterosexual Contact | 1,238 | 12.3% | 1,750 | 57.5% | 2,988 | 22.9% |
| Receipt of Blood Transfusion/Components | 82 | 0.8% | 51 | 1.7% | 133 | 1.0% |
| Confirmed Other | 0 | 0.0% | 1 | 0.0% | 1 | 0.0% |
| Undetermined | 1,541 | 15.4% | 673 | 22.1% | 2,214 | 16.9% |
| Adult/Adolescent Subtotal | 10,035 | 100.0% | 3,041 | 100.0% | 13,076 | 100.0% |
| Pediatric Mode Of Transmission | Exposure Category by Sex | | | | | |
| Exposure Categories*** | Males | | Females | | Total | |
| | Cases | % | Cases | % | Cases | % |
| Hemophilia/Coagulation Disorder | 9 | 13.8% | 1 | 1.4% | 10 | 7.5% |
| Mother with HIV/AIDS | 50 | 76.9% | 71 | 98.6% | 121 | 88.3% |
| Receipt of Blood Transfusion/Components | 4 | 6.2% | 0 | 0.0% | 4 | 2.9% |
| Ped Undetermined | 2 | 3.1% | 0 | 0.0% | 2 | 1.5% |
| Pediatric Subtotal | 65 | 100.0% | 72 | 100.0% | 137 | 100.0% |
| Totals | 10,100 | N/A | 3,113 | N/A | 13,213 | N/A |
| * Data are cumulative from January, 1981 | | | | | | |
| ** Onset of illness in South Carolina; data and disease category information available upon request | | | | | | |
| *** See Technical Notes for information on age groups and exposure categories. | | | | | | |
| Note: Data in this quarterly report are provisional. | | | | | | |

| Table 5 | | | | | | | | | | | | |
|--|------------------|-------------|------------------|-------------|------------|-------------|------------------|-------------|------------------|-------------|------------|-------------|
| South Carolina AIDS Cases in Adolescents and Adults Under Age 25, by Sex and Exposure Category | | | | | | | | | | | | |
| Diagnosed Jan. 2002 Through Dec. 2002, Jan. 2003 Through Dec. 2003, and Cumulative Totals* Through December 31, 2003 | | | | | | | | | | | | |
| Male exposure category** | Ages 13 - 19 | | | | | | Ages 20 - 24 | | | | | |
| | Jan. - Dec. 2002 | | Jan. - Dec. 2003 | | Cumulative | | Jan. - Dec. 2002 | | Jan. - Dec. 2003 | | Cumulative | |
| | Cases | % | Cases | % | Cases | % | Cases | % | Cases | % | Cases | % |
| Men who have sex with men | 4 | 57% | 3 | 43% | 30 | 42% | 8 | 47% | 12 | 55% | 265 | 64% |
| Injecting drug use | 0 | 0% | 0 | 0% | 2 | 3% | 0 | 0% | 0 | 0% | 22 | 5% |
| Men who have sex with men & inject drugs | 0 | 0% | 0 | 0% | 1 | 1% | 0 | 0% | 0 | 0% | 25 | 6% |
| Hemophilia/coagulation disorder | 0 | 0% | 0 | 0% | 15 | 21% | 0 | 0% | 0 | 0% | 5 | 1% |
| Heterosexual contact: | 0 | 0% | 1 | 14% | 8 | 11% | 2 | 12% | 5 | 23% | 47 | 11% |
| Sx w/ injecting drug user | 0 | | 1 | | 1 | | 0 | | 0 | | 5 | |
| Sx w/ person with hemophilia | 0 | | 0 | | 0 | | 0 | | 0 | | 1 | |
| Sx w/ transfusion recipient w/HIV | 0 | | 0 | | 0 | | 0 | | 0 | | 1 | |
| Sx w/HIV+ person, risk not specified | 0 | | 0 | | 7 | | 2 | | 5 | | 40 | |
| Receipt of blood transfusion/components | 0 | 0% | 0 | 0% | 2 | 3% | 0 | 0% | 1 | 5% | 1 | 0% |
| Undetermined | 1 | 14% | 1 | 14% | 6 | 8% | 7 | 41% | 4 | 18% | 48 | 12% |
| Mother with/at risk for HIV infection | 2 | 29% | 2 | 29% | 7 | 10% | 0 | 0% | 0 | 0% | 0 | 0% |
| Total Male | 7 | 100% | 7 | 100% | 71 | 100% | 17 | 100% | 22 | 100% | 413 | 100% |
| Female exposure category** | Ages 13 - 19 | | | | | | Ages 20 - 24 | | | | | |
| | Cases | | % | | Cases | | % | | Cases | | % | |
| | Cases | % | Cases | % | Cases | % | Cases | % | Cases | % | Cases | % |
| Injecting drug use | 0 | 0% | 0 | 0% | 0 | 0% | 1 | 10% | 1 | 5% | 23 | 11% |
| Hemophilia/coagulation disorder | 0 | 0% | 0 | 0% | 0 | 0% | 0 | 0% | 0 | 0% | 0 | 0% |
| Heterosexual contact: | 3 | 38% | 1 | 25% | 20 | 48% | 7 | 70% | 15 | 75% | 141 | 65% |
| Sx w/ injecting drug user | 0 | | 0 | | 4 | | 0 | | 0 | | 23 | |
| Sx w/ bisexual male | 0 | | 0 | | 1 | | 0 | | 0 | | 8 | |
| Sx w/ person with hemophilia | 0 | | 0 | | 1 | | 0 | | 0 | | 1 | |
| Sx w/ transfusion recipient w/HIV | 0 | | 0 | | 0 | | 0 | | 0 | | 1 | |
| Sx w/HIV+ person, risk not specified | 3 | | 1 | | 14 | | 7 | | 15 | | 108 | |
| Receipt of blood transfusion/components | 0 | 0% | 0 | 0% | 2 | 5% | 0 | 0% | 0 | 0% | 1 | 0% |
| Undetermined | 4 | 50% | 0 | 0% | 12 | 29% | 2 | 20% | 4 | 20% | 51 | 24% |
| Mother with/at risk for HIV infection | 1 | 13% | 3 | 75% | 8 | 19% | 0 | 0% | 0 | 0% | 0 | 0% |
| Confirmed Other | 0 | 0% | 0 | 0% | 0 | 0% | 0 | 0% | 0 | 0% | 0 | 0% |
| Total Female | 8 | 100% | 4 | 100% | 42 | 100% | 10 | 100% | 20 | 100% | 216 | 100% |
| * Data are cumulative from January, 1981 | | | | | | | | | | | | |
| ** See Technical Notes for information on age groups and exposure categories. | | | | | | | | | | | | |
| Note: Data in this quarterly report are provisional. | | | | | | | | | | | | |

Table 6

**South Carolina AIDS Cases by Year of Diagnosis and Definition Category
Cases Diagnosed Through December 31, 2003***

| Definition category | Period of Diagnosis | | | | | | | | | | | | Cumulative Total | |
|---|---------------------|-------------|---------------------|-------------|---------------------|-------------|---------------------|-------------|---------------------|-------------|---------------------|-------------|------------------|-------------|
| | Before Jan 1993 | | Jan 1993 - Dec 1994 | | Jan 1995 - Dec 1996 | | Jan 1997 - Dec 1998 | | Jan 1999 - Dec 2000 | | Jan 2001 - Dec 2003 | | | |
| | Cases | % | Cases | % | Cases | % | Cases | % | Cases | % | Cases | % | Cases | % |
| Pre-1987 definition | 1,677 | 50% | 437 | 20% | 396 | 20% | 317 | 18% | 300 | 18% | 308 | 13% | 3,435 | 26% |
| 1987 definition | 936 | 28% | 375 | 18% | 310 | 16% | 285 | 16% | 176 | 10% | 219 | 9% | 2,301 | 17% |
| 1993 definition** | 718 | 22% | 1,324 | 62% | 1,230 | 64% | 1,181 | 66% | 1,206 | 72% | 1,818 | 78% | 7,477 | 57% |
| Pulmonary Tuberculosis | 71 | | 58 | | 51 | | 39 | | 40 | | 28 | | 287 | |
| Recurrent pneumonia | 7 | | 22 | | 8 | | 12 | | 19 | | 17 | | 85 | |
| Invasive cervical cancer | 1 | | 4 | | 0 | | 2 | | 4 | | 3 | | 14 | |
| Severe HIV-related immunosuppression*** | 639 | | 1,240 | | 1,171 | | 1,129 | | 1,143 | | 1,772 | | 7,094 | |
| Total | 3,331 | 100% | 2,136 | 100% | 1,936 | 100% | 1,783 | 100% | 1,682 | 100% | 2,345 | 100% | 13,213 | 100% |

* Data are cumulative from January, 1981

** Persons who meet only the 1993 AIDS Surveillance case definition and whose date of diagnosis is before January 1993 were diagnosed retrospectively. Cases may meet one or more criteria for 1993 definition.

*** Defined as CD4+ T-lymphocyte count of less than 200 or a CD4+ percentage less than 14 in persons with laboratory confirmation of HIV infection.

NOTE: Data are provisional.



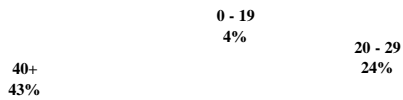
South Carolina HIV/AIDS

Cases by Year of Diagnosis by Race and Sex

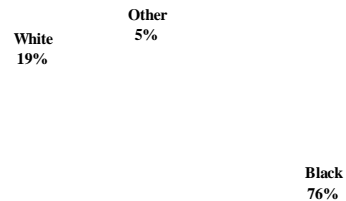
| | 1988 | 1989 | 1990 | 1991 | 1992 | 1993 | 1994 | 1995 | 1996 | 1997 | 1998 | 1999 | 2000 | 2001 | 2002 | 2003 |
|---------------------|------|------|------|------|------|------|------|------|------|------|------|------|------|------|------|------|
| Black Male | 505 | 675 | 674 | 720 | 604 | 646 | 561 | 532 | 492 | 488 | 649 | 507 | 453 | 476 | 452 | 391 |
| Black Female | 122 | 226 | 283 | 265 | 330 | 292 | 283 | 307 | 303 | 315 | 282 | 297 | 272 | 259 | 247 | 256 |
| White Male | 300 | 313 | 354 | 318 | 303 | 272 | 215 | 238 | 240 | 214 | 198 | 144 | 144 | 145 | 130 | 130 |
| White Female | 30 | 42 | 61 | 52 | 51 | 56 | 45 | 37 | 57 | 61 | 53 | 40 | 44 | 38 | 43 | 34 |
| Other/Unk | 7 | 15 | 19 | 10 | 10 | 20 | 16 | 21 | 11 | 14 | 23 | 21 | 32 | 31 | 31 | 46 |

Note: AIDS cases are included in counts of HIV cases.

By Age Group 2003 Cases



By Race 2003 Cases



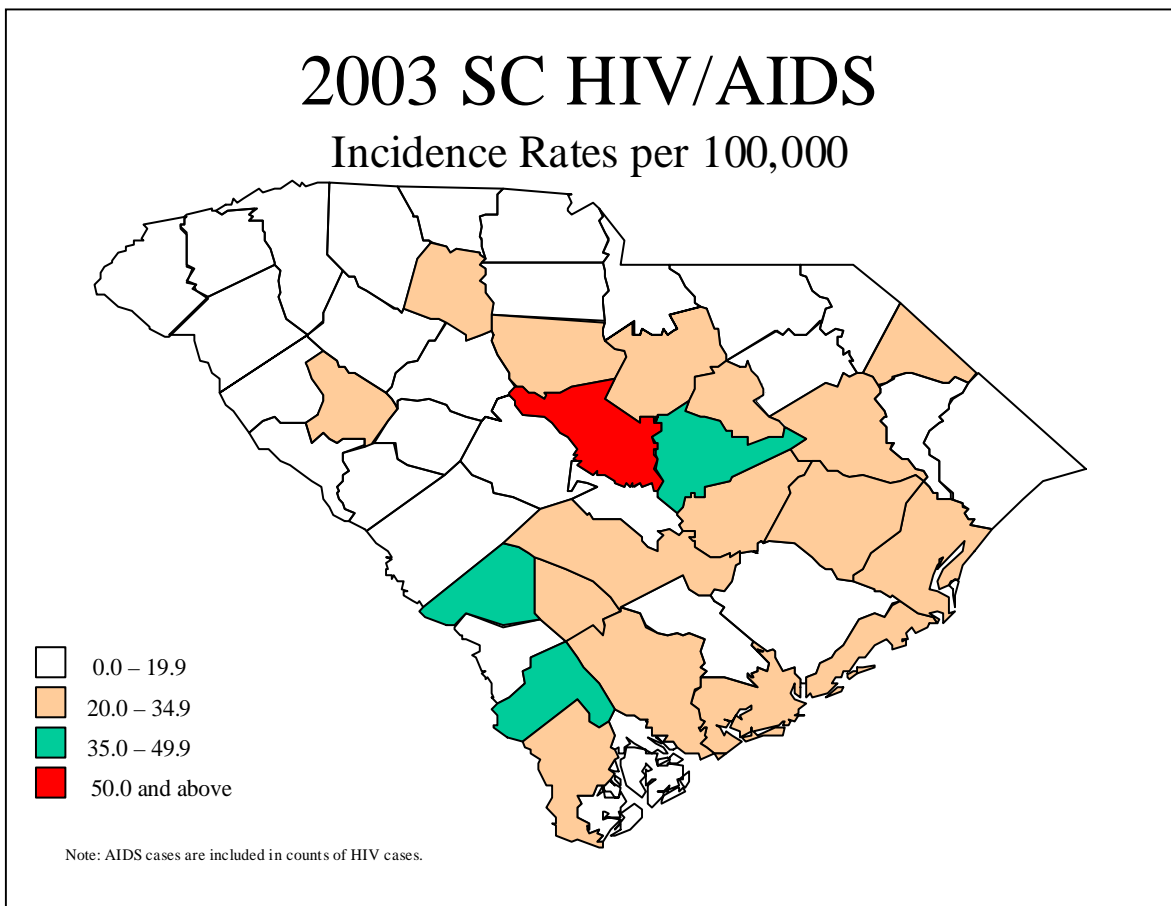
**South Carolina Department of Health and Environmental Control
STD/HIV Division
HIV Quarterly Surveillance Report**

HIV Surveillance Program

December 31, 2003

Telephone: (803) 898-0749

For assistance in reporting cases of AIDS or HIV in South Carolina, call DHEC toll-free at 1-800-277-0873. Refer to the last page of this report for other hotline numbers. By South Carolina statute, physicians, laboratories, health care institutions, and others must report HIV infections and AIDS cases to DHEC.



| Table 7 | | | | | | | |
|--|--------------------------------------|--------------|------------|------------------------|-------------|------------------------|-------------|
| HIV/AIDS Cases* and Annual Rates per 100,000 Population By County | | | | | | | |
| Cumulative Totals, Prevalence Rate, Ranking by Rate | | | | | | | |
| Incidence Rates, Diagnosed January 1 - December 31, 2002 and January 1 - December 31, 2003 | | | | | | | |
| County | Cumulative through December 31, 2003 | | | Jan. 1 - Dec. 31, 2002 | | Jan. 1 - Dec. 31, 2003 | |
| | Cases | Rate** | Rank | Cases | Rate | Cases | Rate |
| Abbeville | 51 | 192.4 | 43 | 5 | 18.9 | . | . |
| Aiken | 486 | 325.4 | 27 | 28 | 19.0 | 18 | 12.1 |
| Allendale | 69 | 596.4 | 14 | . | . | . | . |
| Anderson | 364 | 214.7 | 42 | 13 | 7.7 | 16 | 9.4 |
| Bamberg | 168 | 1028.0 | 2 | 9 | 54.7 | 5 | 30.6 |
| Barnwell | 148 | 616.7 | 12 | 13 | 54.6 | 9 | 37.5 |
| Beaufort | 387 | 302.3 | 31 | 18 | 14.3 | 22 | 17.2 |
| Berkeley | 331 | 219.2 | 41 | 18 | 12.1 | 11 | 7.3 |
| Calhoun | 44 | 285.3 | 32 | . | . | . | . |
| Charleston | 2,414 | 763.8 | 5 | 85 | 27.1 | 80 | 25.3 |
| Cherokee | 100 | 185.6 | 44 | . | . | 5 | 9.3 |
| Chester | 98 | 284.8 | 34 | 7 | 20.4 | 5 | 14.5 |
| Chesterfield | 113 | 263.0 | 40 | 6 | 14.0 | 7 | 16.3 |
| Clarendon | 213 | 645.8 | 11 | 14 | 42.7 | 8 | 24.3 |
| Colleton | 220 | 560.5 | 15 | 13 | 33.4 | 10 | 25.5 |
| Darlington | 321 | 474.2 | 20 | 24 | 35.5 | 13 | 19.2 |
| Dillon | 153 | 503.0 | 18 | 13 | 42.6 | 9 | 29.6 |
| Dorchester | 313 | 305.3 | 29 | 14 | 13.9 | 15 | 14.6 |
| Edgefield | 177 | 704.3 | 7 | 6 | 24.0 | . | . |
| Fairfield | 94 | 392.6 | 24 | 7 | 29.4 | 6 | 25.1 |
| Florence | 850 | 662.0 | 10 | 49 | 38.4 | 39 | 30.4 |
| Georgetown | 280 | 488.7 | 19 | 11 | 19.4 | 13 | 22.7 |
| Greenville | 1,460 | 374.0 | 25 | 53 | 13.7 | 75 | 19.2 |
| Greenwood | 234 | 345.8 | 26 | 6 | 8.9 | 14 | 20.7 |
| Hampton | 120 | 554.5 | 16 | 7 | 32.5 | 8 | 37.0 |
| Horry | 922 | 442.9 | 22 | 50 | 24.5 | 36 | 17.3 |
| Jasper | 129 | 611.1 | 13 | . | . | 6 | 28.4 |
| Kershaw | 224 | 413.0 | 23 | 11 | 20.5 | 13 | 24.0 |
| Lancaster | 163 | 264.2 | 39 | 12 | 19.5 | 7 | 11.3 |
| Laurens | 203 | 283.9 | 35 | 5 | 7.1 | 7 | 9.8 |
| Lee | 106 | 520.4 | 17 | 5 | 24.6 | 6 | 29.5 |
| Lexington | 633 | 279.8 | 36 | 32 | 14.4 | 31 | 13.7 |
| Marion | 241 | 674.3 | 9 | 7 | 19.6 | 5 | 14.0 |
| Marlboro | 194 | 683.3 | 8 | 4 | 14.0 | . | . |
| McCormick | 48 | 462.0 | 21 | 4 | 39.1 | . | . |
| Newberry | 113 | 307.0 | 28 | 5 | 13.7 | 6 | 16.3 |
| Oconee | 74 | 107.2 | 46 | . | . | . | . |
| Orangeburg | 760 | 815.5 | 3 | 29 | 31.3 | 31 | 33.3 |
| Pickens | 131 | 113.2 | 45 | 7 | 6.1 | . | . |
| Richland | 3,666 | 1120.0 | 1 | 191 | 58.7 | 179 | 54.7 |
| Saluda | 55 | 284.8 | 34 | . | . | . | . |
| Spartanburg | 794 | 303.1 | 30 | 20 | 7.7 | 29 | 11.1 |
| Sumter | 842 | 771.9 | 4 | 48 | 44.6 | 48 | 44.0 |
| Union | 83 | 278.7 | 37 | . | . | 10 | 33.6 |
| Williamsburg | 264 | 712.4 | 6 | 11 | 29.6 | 11 | 29.7 |
| York | 475 | 275.7 | 38 | 27 | 15.9 | 26 | 15.1 |
| Not Reported | 134 | N/A | N/A | . | N/A | . | N/A |
| Total | 19,462 | 470.6 | N/A | 903 | 22.1 | 857 | 20.7 |

* Cells with 3 or fewer cases are set to missing (.)

** Case rate per 100,000 population based on census estimates. This is a prevalence rate and is based on the cumulative number of HIV cases. See technical notes.

Note: AIDS cases are included in counts of HIV cases.

Note: Data in this quarterly report are provisional

| Table 7a | | | | | | | |
|---|---|---------------|-------------|-------------------------------|-------------|-------------------------------|-------------|
| HIV/AIDS Cases* and Annual Rates per 100,000 Population By District | | | | | | | |
| Cumulative Totals, Prevalence Rate, Ranking by Rate | | | | | | | |
| Incidence Rates, Diagnosed January 1 - December 31, 2002 and January 1 - December 31, 2003 | | | | | | | |
| District | Cumulative through December 31, 2003 | | | Jan. 1 - Dec. 31, 2002 | | Jan. 1 - Dec. 31, 2003 | |
| | Cases | Rate** | Rank | Cases | Rate | Cases | Rate |
| Appalachia I | 438 | 183.6 | 13 | 15 | 6.3 | 18 | 7.5 |
| Appalachia II | 1,591 | 314.4 | 10 | 60 | 12.0 | 78 | 15.4 |
| Appalachia III | 977 | 282.7 | 11 | 25 | 7.3 | 44 | 12.7 |
| Catawba | 736 | 274.2 | 12 | 46 | 17.3 | 38 | 14.2 |
| Edisto | 972 | 777.9 | 1 | 39 | 31.3 | 38 | 30.4 |
| Low Country | 856 | 407.6 | 7 | 40 | 19.3 | 46 | 21.9 |
| Lower Savannah | 703 | 380.1 | 8 | 43 | 23.6 | 29 | 15.7 |
| Palmetto | 4,506 | 733.5 | 2 | 235 | 38.6 | 222 | 36.1 |
| Pee Dee | 1,872 | 561.1 | 4 | 103 | 31.0 | 75 | 22.5 |
| Trident | 3,058 | 536.9 | 5 | 117 | 20.8 | 106 | 18.6 |
| Upper Savannah | 768 | 348.3 | 9 | 29 | 13.2 | 28 | 12.7 |
| Waccamaw | 1,466 | 484.6 | 6 | 72 | 24.1 | 60 | 19.8 |
| Wateree | 1,385 | 639.2 | 3 | 78 | 36.4 | 75 | 34.6 |
| Total | 19,462 | 470.6 | N/A | 903 | 22.1 | 857 | 20.7 |
| * Cells with 3 or fewer cases are set to missing (.) | | | | | | | |
| ** Case rate per 100,000 population based on census estimates. This is a prevalence rate and is based on the cumulative number of HIV cases. See technical notes. | | | | | | | |
| Note: AIDS cases are included in counts of HIV cases. | | | | | | | |

Table 8
South Carolina HIV/AIDS Cases* by Age Group, Exposure Category, and Sex
Cases Diagnosed January - December 2002 and 2003
Cumulative Totals by Age Group and Exposure Category
Cumulative Through December 31, 2003

| Adult/adolescent exposure category*** | Males | | | | Females | | | | Totals** | | | | Cumulative Total | |
|--|------------------------|-------------|------------------------|-------------|------------------------|-------------|------------------------|-------------|------------------------|-------------|------------------------|-------------|------------------|-------------|
| | Jan. 1 - Dec. 31, 2002 | | Jan. 1 - Dec. 31, 2003 | | Jan. 1 - Dec. 31, 2002 | | Jan. 1 - Dec. 31, 2003 | | Jan. 1 - Dec. 31, 2002 | | Jan. 1 - Dec. 31, 2003 | | Cases | % |
| | Cases | % | Cases | % | Cases | % | Cases | % | Cases | % | Cases | % | Cases | % |
| Men who have sex with men | 214 | 35% | 214 | 39% | N/A | | N/A | | 214 | 24% | 214 | 25% | 6,216 | 32% |
| Injecting drug use | 39 | 6% | 27 | 5% | 13 | 4% | 14 | 5% | 52 | 6% | 41 | 5% | 2,751 | 14% |
| Men who have sex with men & inject drugs | 9 | 1% | 6 | 1% | N/A | | N/A | | 9 | 1% | 6 | 1% | 816 | 4% |
| Hemophilia/coagulation disorder | 0 | 0% | 0 | 0% | 0 | 0% | 0 | 0% | 0 | 0% | 0 | 0% | 65 | 0% |
| Heterosexual contact: | 123 | 20% | 99 | 18% | 181 | 62% | 166 | 54% | 304 | 34% | 265 | 31% | 4,809 | 25% |
| Sx w/ injecting drug user | 5 | | 4 | | 15 | | 7 | | 20 | | 11 | | 998 | |
| Sx w/ bisexual male | N/A | | N/A | | 11 | | 8 | | 11 | | 8 | | 200 | |
| Sx w/ person with hemophilia | 0 | | 0 | | 1 | | 0 | | 1 | | 0 | | 23 | |
| Sx w/ transfusion recipient w/HIV | 1 | | 1 | | 3 | | 2 | | 4 | | 3 | | 45 | |
| Sx w/HIV+ person, risk not specified | 117 | | 94 | | 151 | | 149 | | 268 | | 243 | | 3,543 | |
| Receipt of blood transfusion/components | 3 | 0% | 1 | 0% | 2 | 1% | 2 | 1% | 5 | 1% | 3 | 0% | 161 | 1% |
| Undetermined | 217 | 36% | 200 | 37% | 98 | 33% | 123 | 40% | 315 | 35% | 323 | 38% | 4,441 | 23% |
| Confirmed Other | 0 | 0% | 0 | 0% | 0 | 0% | 1 | 0% | 0 | 0% | 1 | 0% | 3 | 0% |
| Adult/adolescent subtotal | 605 | 100% | 547 | 100% | 294 | 100% | 306 | 100% | 899 | 100% | 853 | 100% | 19,262 | 100% |
| Pediatric (<13 years old) exposure category*** | | | | | | | | | | | | | | |
| Hemophilia/coagulation disorder | 0 | 0% | 0 | 0% | 0 | 0% | 0 | 0% | 0 | 0% | 0 | 0% | 13 | 7% |
| Mother with/at risk for HIV infection: | 1 | 100% | 0 | 0% | 3 | 100% | 3 | 75% | 4 | 100% | 3 | 75% | 168 | 84% |
| Injecting drug use | 0 | | 0 | | 0 | | 0 | | 0 | | 0 | | 42 | |
| Sx w/ injecting drug user | 0 | | 0 | | 0 | | 0 | | 0 | | 0 | | 28 | |
| Sx w/ bisexual male | 0 | | 0 | | 0 | | 0 | | 0 | | 0 | | 3 | |
| Sx w/ HIV+ person, risk not specified | 1 | | 0 | | 2 | | 3 | | 3 | | 3 | | 38 | |
| Receipt of blood transfusion, components | 0 | | 0 | | 0 | | 0 | | 0 | | 0 | | 1 | |
| Has HIV infection, risk not specified | 0 | | 0 | | 1 | | 0 | | 1 | | 0 | | 56 | |
| Receipt of blood transfusion, components | 0 | 0% | 0 | 0% | 0 | 0% | 0 | 0% | 0 | 0% | 0 | 0% | 6 | 3% |
| Undetermined | 0 | 0% | 0 | 0% | 0 | 0% | 1 | 25% | 0 | 0% | 1 | 25% | 13 | 7% |
| Pediatric subtotal | 1 | 100% | 0 | 0% | 3 | 100% | 4 | 100% | 4 | 100% | 4 | 100% | 200 | 100% |
| Total | 606 | | 547 | | 297 | | 310 | | 903 | | 857 | | 19,462 | |

* AIDS cases are included in counts of HIV cases. Data are cumulative from February, 1986.

** Totals may include individuals for whom sex categorization is unknown.

*** See Technical Notes for information on age group and exposure categories.

Note: Data in this quarterly report are provisional.

Note: Risk on HIV infections is frequently not available on persons reported from outside DHEC clinics.

Table 9

South Carolina Adult/Adolescent HIV/AIDS Cases* by Sex, Exposure Category, and Race
Cases Diagnosed between January 1 - December 31, 2003 and Cumulative Totals Through December 31, 2003

| All Sexes | White | | | | African American | | | | Totals** | | | |
|--|------------------|-------------|--------------|-------------|------------------|-------------|---------------|-------------|------------------|-------------|---------------|-------------|
| | Jan. - Dec. 2003 | | Cumulative | | Jan. - Dec. 2003 | | Cumulative | | Jan. - Dec. 2003 | | Cumulative | |
| | Cases | % | Cases | % | Cases | % | Cases | % | Cases | % | Cases | % |
| Exposure category*** | | | | | | | | | | | | |
| Men who have sex with men | 75 | 46% | 2,783 | 55% | 132 | 20% | 3,348 | 24% | 214 | 25% | 6,216 | 32% |
| Injecting drug use | 13 | 8% | 481 | 9% | 27 | 4% | 2,233 | 16% | 41 | 5% | 2,751 | 14% |
| Men who have sex with men & inject drugs | 4 | 2% | 304 | 6% | 2 | 0% | 507 | 4% | 6 | 1% | 816 | 4% |
| Hemophilia/coagulation disorder | 0 | 0% | 50 | 1% | 0 | 0% | 13 | 0% | 0 | 0% | 65 | 0% |
| Heterosexual contact: | 22 | 18% | 604 | 12% | 228 | 35% | 4,121 | 30% | 265 | 31% | 4,809 | 25% |
| Sex with injecting drug user | 3 | | 135 | | 7 | | 848 | | 11 | | 998 | |
| Sex with bisexual male | 0 | | 47 | | 8 | | 150 | | 8 | | 200 | |
| Sex with person with hemophilia | 0 | | 15 | | 0 | | 8 | | 0 | | 23 | |
| Sex with transfusion recipient withHIV | 0 | | 9 | | 3 | | 36 | | 3 | | 45 | |
| Sex with HIV+ person, risk not specified | 19 | | 398 | | 210 | | 3,079 | | 243 | | 3,543 | |
| Receipt of blood transfusion/components | 1 | 1% | 55 | 1% | 2 | 0% | 104 | 1% | 3 | 0% | 161 | 1% |
| Undetermined | 48 | 29% | 815 | 16% | 252 | 39% | 3,498 | 25% | 323 | 38% | 4,441 | 23% |
| Confirmed Other | 0 | 0% | 1 | 0% | 1 | 0% | 2 | 0% | 1 | 0% | 3 | 0% |
| Total | 163 | 100% | 5,093 | 100% | 644 | 100% | 13,826 | 100% | 853 | 100% | 19,262 | 100% |
| Males | | | | | | | | | | | | |
| Exposure Category*** | | | | | | | | | | | | |
| Men who have sex with men | 75 | 58% | 2,783 | 64% | 132 | 34% | 3,348 | 35% | 214 | 39% | 6,216 | 44% |
| Injecting drug use | 8 | 6% | 321 | 7% | 19 | 5% | 1,613 | 17% | 27 | 5% | 1,965 | 14% |
| Men who have sex with men & inject drugs | 4 | 3% | 304 | 7% | 2 | 1% | 507 | 5% | 6 | 1% | 816 | 6% |
| Hemophilia/coagulation disorder | 0 | 0% | 48 | 1% | 0 | 0% | 11 | 0% | 0 | 0% | 61 | 0% |
| Heterosexual contact: | 7 | 5% | 194 | 4% | 87 | 22% | 1,608 | 17% | 99 | 18% | 1,840 | 13% |
| Sx w/ injecting drug user | 0 | | 40 | | 3 | | 287 | | 4 | | 332 | |
| Sx w/ person with hemophilia | 0 | | 2 | | 0 | | 4 | | 0 | | 6 | |
| Sx w/ transfusion recipient w/HIV | 0 | | 1 | | 1 | | 14 | | 1 | | 15 | |
| Sx w/HIV+ person, risk not specified | 7 | | 151 | | 83 | | 1,303 | | 94 | | 1,487 | |
| Receipt of blood transfusion/components | 1 | 1% | 38 | 1% | 0 | 0% | 52 | 1% | 1 | 0% | 92 | 1% |
| Undetermined | 35 | 27% | 637 | 15% | 151 | 39% | 2,324 | 25% | 200 | 37% | 3,055 | 22% |
| Total | 130 | 100% | 4,325 | 100% | 391 | 100% | 9,463 | 100% | 547 | 100% | 14,045 | 100% |
| Females | | | | | | | | | | | | |
| Exposure Category*** | | | | | | | | | | | | |
| Injecting drug use | 5 | 15% | 160 | 21% | 8 | 3% | 620 | 14% | 14 | 5% | 786 | 15% |
| Hemophilia/coagulation disorder | 0 | 0% | 2 | 0% | 0 | 0% | 2 | 0% | 0 | 0% | 4 | 0% |
| Heterosexual contact: | 15 | 45% | 410 | 53% | 141 | 56% | 2,513 | 58% | 166 | 54% | 2,969 | 57% |
| Sx w/ injecting drug user | 3 | | 95 | | 4 | | 561 | | 7 | | 666 | |
| Sx w/ bisexual male | 0 | | 47 | | 8 | | 150 | | 8 | | 200 | |
| Sx w/ person with hemophilia | 0 | | 13 | | 0 | | 4 | | 0 | | 17 | |
| Sx w/ transfusion recipient w/HIV | 0 | | 8 | | 2 | | 22 | | 2 | | 30 | |
| Sx w/HIV+ person, risk not specified | 12 | | 247 | | 127 | | 1,776 | | 149 | | 2,056 | |
| Receipt of blood transfusion/components | 0 | 0% | 17 | 2% | 2 | 1% | 52 | 1% | 2 | 1% | 69 | 1% |
| Undetermined | 13 | 39% | 178 | 23% | 101 | 40% | 1,174 | 27% | 123 | 40% | 1,383 | 27% |
| Confirmed Other | 0 | 0% | 1 | 0% | 1 | 0% | 2 | 0% | 1 | 0% | 3 | 0% |
| Total | 33 | 100% | 768 | 100% | 253 | 100% | 4,363 | 100% | 306 | 100% | 5,214 | 100% |

* AIDS cases are included in counts of HIV cases. Data are cumulative from February, 1986.

** Totals may include individuals for whom sex categorization is unknown.

*** See Technical Notes for information on age group and exposure categories.

Note: Data in this quarterly report are provisional.

Note: Risk on HIV infections is frequently not available on persons reported from outside DHEC clinics.

| Table 10 | | | | | | |
|---|---|---------------|------------------------|---------------|---------------|---------------|
| South Carolina Cumulative HIV/AIDS Summary* Through December 31, 2003 | | | | | | |
| Race/Ethnicity | Adult/Adolescent | | Pediatric (<=12 years) | | Total | |
| | Cases | % | Cases | % | Cases | % |
| White, Not Hispanic | 5,093 | 26.4% | 30 | 14.9% | 5,123 | 26.3% |
| Black, Not Hispanic | 13,824 | 71.8% | 167 | 82.7% | 13,991 | 71.9% |
| Hispanic | 256 | 1.3% | 4 | 2.0% | 260 | 1.3% |
| Asian/Pacific Islander | 29 | 0.2% | 1 | 0.5% | 30 | 0.2% |
| American Indian/Alaskan | 20 | 0.1% | 0 | 0.0% | 20 | 0.1% |
| Unknown | 38 | 0.2% | 0 | 0.0% | 38 | 0.2% |
| Total | 19,260 | 100.0% | 202 | 100.0% | 19,462 | 100.0% |
| Age at Diagnosis*** | Race | | | | | |
| | (Other races are shown in totals but not shown on report) | | | | | |
| | White | | African American | | Total | |
| | Cases | % | Cases | % | Cases | % |
| Under 5 | 19 | 0.4% | 123 | 0.9% | 146 | 0.8% |
| 5 - 12 | 11 | 0.2% | 44 | 0.3% | 56 | 0.3% |
| 13-19 | 133 | 2.6% | 515 | 3.7% | 660 | 3.4% |
| 20-29 | 1,626 | 31.7% | 4,051 | 29.0% | 5,801 | 29.8% |
| 30-39 | 2,019 | 39.4% | 5,237 | 37.4% | 7,384 | 37.9% |
| 40-49 | 912 | 17.8% | 2,860 | 20.4% | 3,824 | 19.6% |
| Over 49 | 403 | 7.9% | 1,161 | 8.3% | 1,591 | 8.2% |
| Unknown | 0 | 0.0% | 0 | 0.0% | 0 | 0.0% |
| Total | 5,123 | 100.0% | 13,991 | 100.0% | 19,462 | 100.0% |
| Adult/Adolescent Mode Of Transmission | Exposure Category by Sex**** | | | | | |
| Exposure Categories**** | Males | | Females | | Total | |
| | Cases | % | Cases | % | Cases | % |
| Men Who Have Sex With Men | 6,216 | 44.3% | N/A | N/A | 6,216 | 32.3% |
| Injecting Drug Use | 1,965 | 14.0% | 786 | 15.1% | 2,751 | 14.3% |
| Men Who Have Sex With Men & Inject Drugs | 816 | 5.8% | N/A | N/A | 816 | 4.2% |
| Hemophilia/Coagulation Disorder | 61 | 0.4% | 4 | 0.1% | 65 | 0.3% |
| Heterosexual Contact | 1,840 | 13.1% | 2,969 | 57.0% | 4,809 | 25.0% |
| Receipt of Blood Transfusion/Components | 92 | 0.7% | 69 | 1.3% | 161 | 0.8% |
| Confirmed Other | 0 | 0.0% | 1 | 0.0% | 1 | 0.0% |
| Undetermined | 3,055 | 21.8% | 1,383 | 26.5% | 4,441 | 23.1% |
| Adult/Adolescent Subtotal | 14,045 | 100.0% | 5,212 | 100.0% | 19,260 | 100.0% |
| Pediatric Mode Of Transmission | Exposure Category by Sex**** | | | | | |
| Exposure Categories**** | Males | | Females | | Total | |
| | Cases | % | Cases | % | Cases | % |
| Hemophilia/Coagulation Disorder | 12 | 14.0% | 1 | 0.9% | 13 | 6.4% |
| Mother with HIV/AIDS | 66 | 76.7% | 102 | 87.9% | 168 | 83.2% |
| Receipt of Blood Transfusion/Components | 3 | 3.5% | 3 | 2.6% | 6 | 3.0% |
| Confirmed Other | 0 | 0.0% | 2 | 1.7% | 2 | 1.0% |
| Ped Undetermined | 5 | 5.8% | 8 | 6.9% | 13 | 6.4% |
| Pediatric Subtotal | 86 | 100.0% | 116 | 100.0% | 202 | 100.0% |
| Mode Of Transmission Total | 14,131 | | 5,328 | | 19,462 | |
| * AIDS cases are included in counts of HIV cases. Data are cumulative from February, 1986. | | | | | | |
| ** Onset of illness in South Carolina data and disease category information available upon request. | | | | | | |
| *** Individuals with unknown age at diagnosis are included in totals. | | | | | | |
| **** See Technical Notes for information on age group and exposure categories. | | | | | | |
| ***** Totals may include individuals for whom sex categorization is not known. | | | | | | |
| Note: Data in this quarterly report are provisional. | | | | | | |
| Note: Risk on HIV infections is frequently not available on persons reported from outside DHEC clinics. | | | | | | |

| Table 11 | | | | | | | | | | | | |
|---|------------------|-------------|------------------|-------------|------------|-------------|------------------|-------------|------------------|-------------|--------------|-------------|
| South Carolina HIV/AIDS Cases* in Adolescents and Adults Under Age 25, by Sex and Exposure Category | | | | | | | | | | | | |
| Diagnosed Jan. 2002 Through Dec. 2002, Jan. 2003 Through Dec. 2003, and Cumulative Totals Through December 31, 2003 | | | | | | | | | | | | |
| Male exposure category** | Ages 13 - 19 | | | | | | Ages 20 - 24 | | | | | |
| | Jan. - Dec. 2002 | | Jan. - Dec. 2003 | | Cumulative | | Jan. - Dec. 2002 | | Jan. - Dec. 2003 | | Cumulative | |
| | Cases | % | Cases | % | Cases | % | Cases | % | Cases | % | Cases | % |
| Men who have sex with men | 11 | 61% | 13 | 68% | 185 | 58% | 28 | 56% | 42 | 70% | 930 | 59% |
| Injecting drug use | 0 | 0% | 0 | 0% | 12 | 4% | 0 | 0% | 1 | 2% | 63 | 4% |
| Men who have sex with men & inject drugs | 0 | 0% | 0 | 0% | 9 | 3% | 0 | 0% | 1 | 2% | 86 | 5% |
| Hemophilia/coagulation disorder | 0 | 0% | 0 | 0% | 16 | 5% | 0 | 0% | 0 | 0% | 14 | 1% |
| Heterosexual contact: | 0 | 0% | 3 | 16% | 34 | 11% | 6 | 12% | 6 | 10% | 164 | 10% |
| | | | | | | | | | | | | |
| Sx w/ injecting drug user | 0 | | 1 | | 2 | | 0 | | 0 | | 20 | |
| Sx w/ person with hemophilia | 0 | | 0 | | 1 | | 0 | | 0 | | 0 | |
| Sx w/ transfusion recipient w/HIV | 0 | | 0 | | 0 | | 1 | | 0 | | 3 | |
| Sx w/HIV+ person, risk not specified | 0 | | 2 | | 31 | | 5 | | 6 | | 141 | |
| | | | | | | | | | | | | |
| Receipt of blood transfusion/components | 0 | 0% | 0 | 0% | 1 | 0% | 0 | 0% | 0 | 0% | 3 | 0% |
| Undetermined | 7 | 39% | 3 | 16% | 63 | 20% | 16 | 32% | 10 | 17% | 306 | 20% |
| Mother with/at risk for HIV infection | 0 | 0% | 0 | 0% | 0 | 0% | 0 | 0% | 0 | 0% | 0 | 0% |
| Total Male | 18 | 100% | 19 | 100% | 320 | 100% | 50 | 100% | 60 | 100% | 1,566 | 100% |
| Female exposure category** | Ages 13 - 19 | | | | | | Ages 20 - 24 | | | | | |
| | Cases | | % | | Cases | | % | | Cases | | % | |
| | Cases | % | Cases | % | Cases | % | Cases | % | Cases | % | Cases | % |
| Injecting drug use | 1 | 5% | 0 | 0% | 20 | 6% | 0 | 0% | 1 | 3% | 68 | 9% |
| Hemophilia/coagulation disorder | 0 | 0% | 0 | 0% | 0 | 0% | 0 | 0% | 0 | 0% | 0 | 0% |
| Heterosexual contact: | 8 | 40% | 9 | 75% | 226 | 66% | 18 | 67% | 26 | 79% | 481 | 66% |
| | | | | | | | | | | | | |
| Sx w/ injecting drug user | 0 | | 0 | | 37 | | 2 | | 1 | | 82 | |
| Sx w/ bisexual male | 0 | | 1 | | 10 | | 1 | | 0 | | 33 | |
| Sx w/ person with hemophilia | 0 | | 0 | | 4 | | 0 | | 0 | | 5 | |
| Sx w/ transfusion recipient w/HIV | 0 | | 8 | | 2 | | 0 | | 0 | | 5 | |
| Sx w/HIV+ person, risk not specified | 8 | | 7 | | 173 | | 15 | | 25 | | 356 | |
| | | | | | | | | | | | | |
| Receipt of blood transfusion/components | 1 | 5% | 0 | 0% | 4 | 1% | 0 | 0% | 0 | 0% | 2 | 0% |
| Undetermined | 10 | 50% | 3 | 25% | 90 | 26% | 9 | 33% | 6 | 18% | 174 | 24% |
| Mother with/at risk for HIV infection | 0 | 0% | 0 | 0% | 0 | 0% | 0 | 0% | 0 | 0% | 0 | 0% |
| Confirmed Other | 0 | 0% | 0 | 0% | 0 | 0% | 0 | 0% | 0 | 0% | 0 | 0% |
| Total Female | 20 | 100% | 12 | 100% | 340 | 100% | 27 | 100% | 33 | 100% | 725 | 100% |
| * AIDS cases are included in counts of HIV cases. Data are cumulative from February, 1986. | | | | | | | | | | | | |
| ** See Technical Notes for information on age group and exposure categories. Totals may include individuals for whom sex categorization is not known. | | | | | | | | | | | | |
| Note: Data in this quarterly report are provisional. | | | | | | | | | | | | |
| Note: Risk on HIV infections is frequently not available on persons reported from outside DHEC clinics. | | | | | | | | | | | | |

| Table 12 | | | | | | |
|--|---------------|---------------|--------------|---------------|---------------|---------------|
| South Carolina HIV/AIDS Summary* | | | | | | |
| Cumulative Data By Age Group, Race, and Sex** December 31, 2003 | | | | | | |
| Race: White | | | | | | |
| Age Group | Male | | Female | | Total*** | |
| | Cases | % | Cases | % | Cases | % |
| <= 12 Years | 17 | 0.4% | 13 | 1.7% | 30 | 0.6% |
| 13-19 Years | 73 | 1.7% | 60 | 7.7% | 133 | 2.6% |
| 20-29 Years | 1,383 | 31.9% | 243 | 31.1% | 1,626 | 31.7% |
| 30-39 Years | 1,753 | 40.4% | 266 | 34.1% | 2,019 | 39.4% |
| 40-49 Years | 790 | 18.2% | 122 | 15.6% | 912 | 17.8% |
| >=50 Years | 326 | 7.5% | 77 | 9.9% | 403 | 7.9% |
| Total White | 4,342 | 100.0% | 781 | 100.0% | 5,123 | 100.0% |
| Race: African American | | | | | | |
| Age Group | Male | | Female | | Total*** | |
| | Cases | % | Cases | % | Cases | % |
| <= 12 Years | 69 | 0.7% | 98 | 2.2% | 167 | 1.2% |
| 13-19 Years | 241 | 2.5% | 274 | 6.1% | 515 | 3.7% |
| 20-29 Years | 2,652 | 27.8% | 1,399 | 31.4% | 4,051 | 29.0% |
| 30-39 Years | 3,711 | 38.9% | 1,526 | 34.2% | 5,237 | 37.4% |
| 40-49 Years | 2,053 | 21.5% | 807 | 18.1% | 2,860 | 20.4% |
| >=50 Years | 806 | 8.5% | 355 | 8.0% | 1,161 | 8.3% |
| Total Black | 9,532 | 100.0% | 4,459 | 100.0% | 13,991 | 100.0% |
| Race: Other | | | | | | |
| Age Group | Male | | Female | | Total*** | |
| | Cases | % | Cases | % | Cases | % |
| <= 12 Years | 0 | 0.0% | 5 | 6.3% | 5 | 1.6% |
| 13-19 Years | 4 | 1.7% | 6 | 7.6% | 10 | 3.2% |
| 20-29 Years | 83 | 35.9% | 29 | 36.7% | 112 | 36.1% |
| 30-39 Years | 91 | 39.4% | 25 | 31.6% | 116 | 37.4% |
| 40-49 Years | 39 | 16.9% | 7 | 8.9% | 46 | 14.8% |
| >=50 Years | 14 | 6.1% | 7 | 8.9% | 21 | 6.8% |
| Total Other | 231 | 100.0% | 79 | 100.0% | 310 | 100.0% |
| Race: Unknown | | | | | | |
| Age Group | Male | | Female | | Total*** | |
| | Cases | % | Cases | % | Cases | % |
| <= 12 Years | 0 | 0.0% | 0 | 0.0% | 0 | 0.0% |
| 13-19 Years | 2 | 7.7% | 0 | 0.0% | 2 | 5.3% |
| 20-29 Years | 7 | 26.9% | 5 | 55.6% | 12 | 31.6% |
| 30-39 Years | 10 | 38.5% | 2 | 22.2% | 12 | 31.6% |
| 40-49 Years | 4 | 15.4% | 2 | 22.2% | 6 | 15.8% |
| >=50 Years | 3 | 11.5% | 0 | 0.0% | 6 | 15.8% |
| Total Other | 26 | 100.0% | 9 | 100.0% | 38 | 100.0% |
| Race: Total | | | | | | |
| Age Group | Male | | Female | | Total*** | |
| | Cases | % | Cases | % | Cases | % |
| <= 12 Years | 86 | 0.6% | 116 | 2.2% | 202 | 1.0% |
| 13-19 Years | 320 | 2.3% | 340 | 6.4% | 660 | 3.4% |
| 20-29 Years | 4,125 | 29.2% | 1,676 | 31.5% | 5,801 | 29.8% |
| 30-39 Years | 5,565 | 39.4% | 1,819 | 34.1% | 7,384 | 37.9% |
| 40-49 Years | 2,886 | 20.4% | 938 | 17.6% | 3,824 | 19.6% |
| >=50 Years | 1,149 | 8.1% | 439 | 8.2% | 1,591 | 8.2% |
| Total | 14,131 | 100.0% | 5,328 | 100.0% | 19,462 | 100.0% |
| * AIDS cases are included in counts of HIV cases. Cumulative from Feb. 1986. | | | | | | |
| ** See technical notes for more information on age groups. | | | | | | |
| *** Totals may include individuals for whom sex categorization is unknown. | | | | | | |
| Note: Data in this quarterly report are provisional. | | | | | | |

| Table 13 | | | | | | |
|---|-------------------|---------------|---------------|------------------|---------------|---------------|
| South Carolina Adolescent (13 - 19 years) HIV/AIDS Summary* | | | | | | |
| Cumulative Through December 31, 2003 | | | | | | |
| Race/Ethnicity | AIDS Cases | | | HIV Cases | | |
| | Cases | % | | Cases | % | |
| White, Not Hispanic | 20 | 17.7% | | 133 | 20.2% | |
| Black, Not Hispanic | 90 | 79.6% | | 515 | 78.0% | |
| Hispanic | 2 | 1.8% | | 8 | 1.2% | |
| American Indian/Alaskan | 1 | 0.9% | | 2 | 0.3% | |
| Unknown | 0 | 0.0% | | 2 | 0.3% | |
| Total | 113 | 100.0% | | 660 | 100.0% | |
| AIDS Cases, Exposure by Sex | | | | | | |
| Exposure Categories** | Male | | Female | | Total | |
| | Cases | % | Cases | % | Cases | % |
| Men who have sex with men | 30 | 42.3% | N/A | N/A | 30 | 26.5% |
| Injecting drug use | 2 | 2.8% | 0 | 0.0% | 2 | 1.8% |
| Men who have sex with men & inject drugs | 1 | 1.4% | N/A | N/A | 1 | 0.9% |
| Hemophilia/coagulation disorder | 15 | 21.1% | 0 | 0.0% | 15 | 13.3% |
| Heterosexual contact | 8 | 11.3% | 20 | 47.6% | 28 | 24.8% |
| Receipt of blood transfusion/components | 1 | 1.4% | 2 | 4.8% | 3 | 2.7% |
| Undetermined | 5 | 7.0% | 12 | 28.6% | 17 | 15.0% |
| Mother with HIV/AIDS | 7 | 9.9% | 8 | 19.0% | 15 | 13.3% |
| Ped. Receipt of blood transfusion/components | 1 | 1.4% | 0 | 0.0% | 1 | 0.9% |
| Pediatric Undetermined | 1 | 1.4% | 0 | 0.0% | 1 | 0.9% |
| Total | 71 | 100.0% | 42 | 100.0% | 113 | 100.0% |
| HIV/AIDS Cases, Exposure by Sex | | | | | | |
| Exposure Categories** | Male | | Female | | Total | |
| | Cases | % | Cases | % | Cases | % |
| Men who have sex with men | 185 | 57.8% | N/A | N/A | 185 | 28.0% |
| Injecting drug use | 12 | 3.8% | 20 | 5.9% | 32 | 4.8% |
| Men who have sex with men & inject drugs | 9 | 2.8% | N/A | N/A | 9 | 1.4% |
| Hemophilia/coagulation disorder | 16 | 5.0% | 0 | 0.0% | 16 | 2.4% |
| Heterosexual contact | 34 | 10.6% | 226 | 66.5% | 260 | 39.4% |
| Receipt of blood transfusion/components | 1 | 0.3% | 4 | 1.2% | 5 | 0.8% |
| Undetermined | 63 | 19.7% | 90 | 26.5% | 153 | 23.2% |
| Total | 320 | 100.0% | 340 | 100.0% | 660 | 100.0% |
| * AIDS data cumulative from January, 1981; HIV data cumulative from February 1986. | | | | | | |
| AIDS cases are included in counts of HIV cases. | | | | | | |
| Risk information on HIV infections is frequently not available on persons reported from outside DHEC clinics. | | | | | | |
| ** See Technical Notes for more information on exposure categories. | | | | | | |
| Note: Data in this quarterly report are provisional. | | | | | | |

Table 14
South Carolina Women of Childbearing Age (15 - 45 years) HIV/AIDS Summary*
Cumulative Through December 31, 2003

| Race/Ethnicity | AIDS Cases | | HIV/AIDS Cases | |
|-------------------------|--------------|---------------|----------------|---------------|
| | Cases | % | Cases | % |
| White, Not Hispanic | 330 | 13.4% | 661 | 14.8% |
| Black, Not Hispanic | 2,089 | 85.0% | 3,741 | 83.5% |
| Hispanic | 30 | 1.2% | 55 | 1.2% |
| Asian/Pacific Islander | 5 | 0.2% | 9 | 0.2% |
| American Indian/Alaskan | 1 | 0.0% | 3 | 0.1% |
| Unknown | 4 | 0.2% | 9 | 0.2% |
| Total | 2,459 | 100.0% | 4,478 | 100.0% |

AIDS Cases, Exposure by Age Group

| Exposure Categories** | Ages 15 - 29 | | Ages 30 - 45 | | Total | |
|---|--------------|---------------|--------------|---------------|--------------|---------------|
| | Cases | % | Cases | % | Cases | % |
| Injecting drug use | 79 | 11.4% | 418 | 23.6% | 497 | 20.2% |
| Hemophilia/coagulation disorder | 1 | 0.1% | 3 | 0.2% | 4 | 0.2% |
| Heterosexual contact | 462 | 67.0% | 988 | 55.9% | 1,450 | 59.0% |
| Receipt of blood transfusion/components | 7 | 1.0% | 19 | 1.1% | 26 | 1.1% |
| Confirmed Other | 0 | 0.0% | 1 | 0.1% | 1 | 0.0% |
| Undetermined | 137 | 19.9% | 340 | 19.2% | 477 | 19.4% |
| Mother with HIV/AIDS | 4 | 0.6% | 0 | 0.0% | 4 | 0.2% |
| Total | 690 | 100.0% | 1,769 | 100.0% | 2,459 | 100.0% |

HIV/AIDS Cases, Exposure by Age Group

| Exposure Categories** | Ages 15 - 29 | | Ages 30 - 45 | | Total | |
|---|--------------|---------------|--------------|---------------|--------------|---------------|
| | Cases | % | Cases | % | Cases | % |
| Injecting drug use | 235 | 11.7% | 487 | 19.7% | 722 | 16.1% |
| Hemophilia/coagulation disorder | 2 | 0.1% | 2 | 0.1% | 4 | 0.1% |
| Heterosexual contact | 1,258 | 62.7% | 1,338 | 54.1% | 2,596 | 58.0% |
| Receipt of blood transfusion/components | 10 | 0.5% | 27 | 1.1% | 37 | 0.8% |
| Confirmed Other | 0 | 0.0% | 1 | 0.0% | 1 | 0.0% |
| Undetermined | 502 | 25.0% | 616 | 24.9% | 1,118 | 25.0% |
| Total | 2,007 | 100.0% | 2,471 | 100.0% | 4,478 | 100.0% |

* AIDS data cumulative from January, 1981; HIV data cumulative from February 1986.

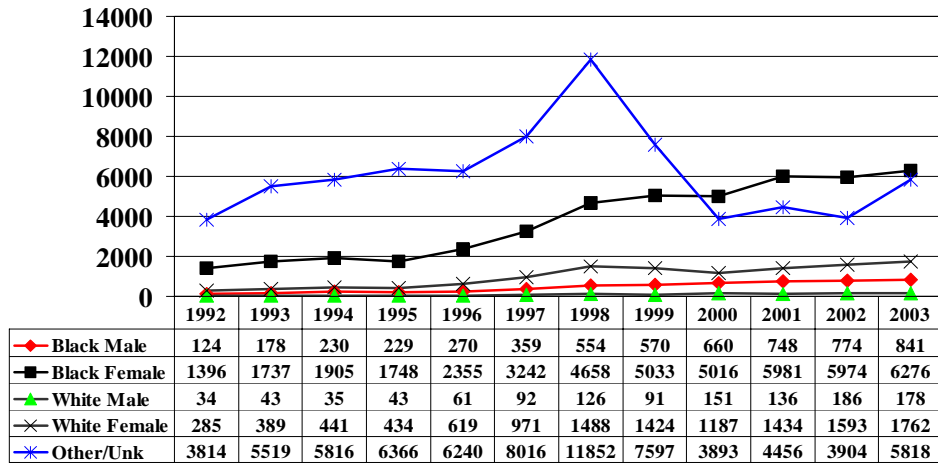
AIDS cases are included in counts of HIV cases.

Risk information on HIV infections is frequently not available on persons reported from outside DHEC clinics.

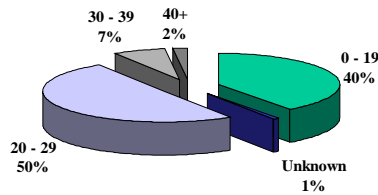
** See Technical Notes for more information on exposure categories.

Note: Data in this quarterly report are provisional.

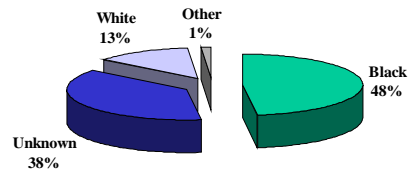
South Carolina Chlamydia Cases by Year of Diagnosis by Race and Sex



By Age Group
2003 Cases



By Race
2003 Cases



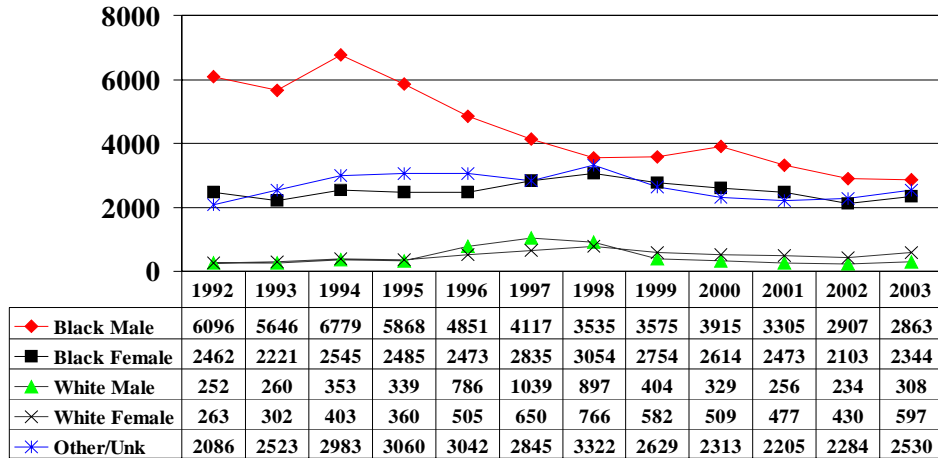
Note: Data in this table are tabulated by date of diagnosis, not date of report. This is a change from earlier reports.

| Table 15 | | | | | | | |
|---|--------------------|--------------|------------|--------------------|--------------|--------------------|--------------|
| South Carolina Chlamydia Cases and Annual Rates per 100,000 Population* By County | | | | | | | |
| Ranking by Rate | | | | | | | |
| County | Jan-December, 2003 | | | Jan-December, 2002 | | Jan-December, 2001 | |
| | Cases | Rate* | Rank | Cases | Rate* | Cases | Rate* |
| Abbeville | 72 | 271.6 | 34 | 83 | 314.4 | 101 | 383.8 |
| Aiken | 364 | 243.7 | 38 | 336 | 228.4 | 298 | 207.1 |
| Allendale | 90 | 777.9 | 3 | 131 | 1,144.1 | 128 | 1,158.9 |
| Anderson | 306 | 180.5 | 41 | 291 | 172.9 | 468 | 276.9 |
| Bamberg | 135 | 826.2 | 2 | 99 | 601.8 | 110 | 671.0 |
| Barnwell | 82 | 341.7 | 23 | 52 | 218.3 | 64 | 272.1 |
| Beaufort | 418 | 326.5 | 26 | 278 | 221.2 | 234 | 186.9 |
| Berkeley | 257 | 170.2 | 42 | 247 | 166.6 | 195 | 135.3 |
| Calhoun | 24 | 155.6 | 43 | 49 | 319.4 | 49 | 319.2 |
| Charleston | 1,880 | 594.9 | 7 | 1,385 | 441.1 | 1,295 | 415.1 |
| Cherokee | 177 | 328.5 | 25 | 168 | 314.4 | 94 | 176.8 |
| Chester | 142 | 412.7 | 17 | 155 | 452.0 | 132 | 387.6 |
| Chesterfield | 133 | 309.5 | 30 | 160 | 373.0 | 122 | 283.6 |
| Clarendon | 146 | 442.7 | 14 | 129 | 393.1 | 134 | 408.7 |
| Colleton | 137 | 349.0 | 22 | 136 | 349.4 | 128 | 332.1 |
| Darlington | 214 | 316.1 | 28 | 171 | 253.0 | 219 | 323.0 |
| Dillon | 194 | 637.7 | 5 | 116 | 380.1 | 149 | 481.8 |
| Dorchester | 330 | 321.9 | 27 | 214 | 213.0 | 137 | 138.7 |
| Edgefield | 51 | 202.9 | 40 | 47 | 188.4 | 53 | 216.6 |
| Fairfield | 131 | 547.2 | 9 | 114 | 479.4 | 113 | 476.7 |
| Florence | 538 | 419.0 | 15 | 373 | 292.5 | 487 | 384.7 |
| Georgetown | 231 | 403.1 | 18 | 185 | 325.7 | 226 | 395.2 |
| Greenville | 1075 | 275.4 | 33 | 768 | 198.6 | 496 | 128.3 |
| Greenwood | 251 | 371.0 | 20 | 197 | 293.2 | 302 | 452.5 |
| Hampton | 300 | 1,386.3 | 1 | 87 | 403.5 | 102 | 476.4 |
| Horry | 548 | 263.3 | 35 | 536 | 262.3 | 579 | 286.0 |
| Jasper | 79 | 374.2 | 19 | 69 | 329.2 | 83 | 398.7 |
| Kershaw | 193 | 355.8 | 21 | 161 | 299.8 | 136 | 254.6 |
| Lancaster | 206 | 333.9 | 24 | 243 | 394.5 | 227 | 369.1 |
| Laurens | 176 | 246.1 | 37 | 101 | 142.5 | 152 | 216.7 |
| Lee | 101 | 495.8 | 13 | 107 | 527.4 | 110 | 547.5 |
| Lexington | 337 | 149.0 | 44 | 358 | 160.7 | 254 | 115.3 |
| Marion | 191 | 534.4 | 10 | 126 | 353.4 | 135 | 383.6 |
| Marlboro | 145 | 510.7 | 12 | 106 | 371.5 | 139 | 485.1 |
| McCormick | 27 | 259.9 | 36 | 29 | 283.2 | 36 | 355.7 |
| Newberry | 152 | 412.9 | 16 | 101 | 276.2 | 106 | 291.7 |
| Oconee | 69 | 100.0 | 45 | 100 | 146.9 | 97 | 143.9 |
| Orangeburg | 606 | 650.3 | 4 | 543 | 586.1 | 542 | 593.4 |
| Pickens | 95 | 82.1 | 46 | 93 | 81.5 | 78 | 69.6 |
| Richland | 1,844 | 563.3 | 8 | 1,476 | 454.0 | 1,596 | 493.7 |
| Saluda | 46 | 238.2 | 39 | 44 | 228.3 | 47 | 245.9 |
| Spartanburg | 821 | 313.4 | 29 | 721 | 278.1 | 638 | 248.0 |
| Sumter | 673 | 617.0 | 6 | 666 | 619.0 | 639 | 613.0 |
| Union | 85 | 285.4 | 32 | 65 | 218.0 | 65 | 220.0 |
| Williamsburg | 197 | 531.6 | 11 | 182 | 490.4 | 274 | 744.4 |
| York | 492 | 285.5 | 31 | 302 | 177.9 | 334 | 196.2 |
| Total | 14,875 | 359.7 | N/A | 12,431 | 303.6 | 12,755 | 313.9 |

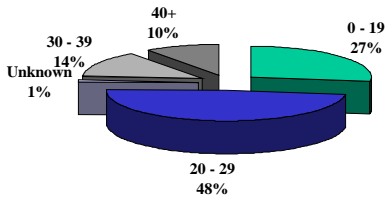
* Case rate per 100,000 population based on census estimates.
Note: STD data may not match previously released data due to a change in the reporting system.
Note: Data in this table are tabulated by date of diagnosis, not date of report. This is a change from earlier reports.
Note: Data are provisional

| Table 15a | | | | | | | |
|---|---------------------------|--------------|-------------|---------------------------|--------------|---------------------------|--------------|
| South Carolina Chlamydia Cases and Annual Rates per 100,000 Population* By District | | | | | | | |
| Ranking by Rate | | | | | | | |
| District | Jan-December, 2003 | | | Jan-December, 2002 | | Jan-December, 2001 | |
| | Cases | Rate* | Rank | Cases | Rate* | Cases | Rate* |
| Appalachia I | 375 | 157.2 | 13 | 391 | 165.4 | 565 | 239.0 |
| Appalachia II | 1,170 | 231.2 | 12 | 861 | 171.9 | 574 | 115.1 |
| Appalachia III | 1,083 | 313.4 | 8 | 954 | 278.6 | 797 | 234.4 |
| Catawba | 840 | 313.0 | 9 | 700 | 263.5 | 693 | 260.7 |
| Edisto | 765 | 612.2 | 1 | 691 | 555.3 | 701 | 569.5 |
| Low Country | 934 | 444.7 | 3 | 570 | 275.2 | 547 | 265.6 |
| Lower Savannah | 536 | 289.8 | 10 | 519 | 284.6 | 490 | 274.5 |
| Palmetto | 2,464 | 401.1 | 6 | 2,049 | 336.8 | 2,069 | 342.8 |
| Pee Dee | 1,415 | 424.1 | 5 | 1,052 | 316.2 | 1,251 | 376.6 |
| Trident | 2,467 | 433.1 | 4 | 1,846 | 328.0 | 1,627 | 293.2 |
| Upper Savannah | 623 | 282.5 | 11 | 501 | 228.9 | 691 | 318.6 |
| Waccamaw | 976 | 322.6 | 7 | 903 | 302.8 | 1,079 | 364.0 |
| Wateree | 1,113 | 513.7 | 2 | 1,063 | 495.8 | 1,019 | 484.0 |
| Total | 14,875 | 359.7 | N/A | 12,431 | 303.6 | 12,755 | 313.9 |
| * Case rate per 100,000 population based on census estimates. | | | | | | | |
| Note: STD data may not match previously released data due to a change in the reporting system. | | | | | | | |
| Note: Data in this table are tabulated by date of diagnosis, not date of report. This is a change from earlier reports. | | | | | | | |
| Note: Data are provisional | | | | | | | |

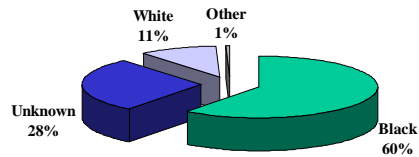
South Carolina Gonorrhea Cases by Year of Diagnosis by Race and Sex



By Age Group
2003 Cases



By Race
2003 Cases



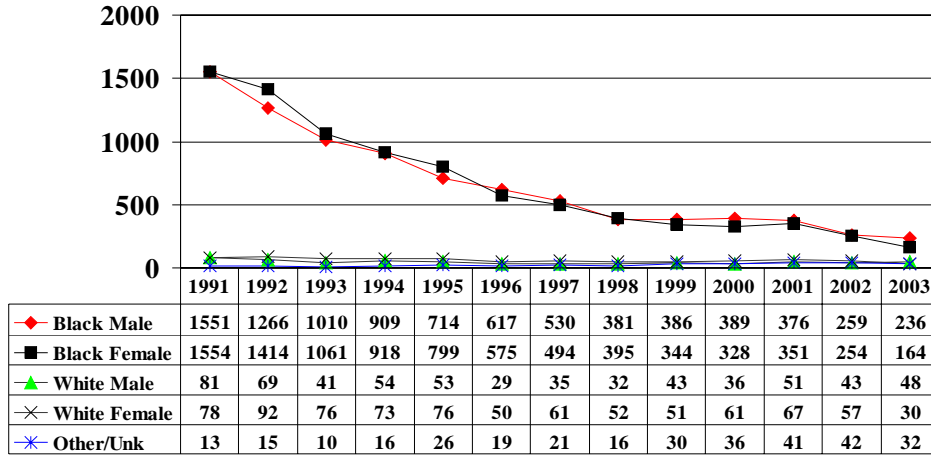
Note: Data in this table are tabulated by date of diagnosis, not date of report. This is a change from earlier reports.

| Table 16 | | | | | | | |
|---|--------------------|--------------|------------|--------------------|--------------|--------------------|--------------|
| South Carolina Gonorrhea Cases and Annual Rates per 100,000 Population* By County | | | | | | | |
| Ranking by Rate | | | | | | | |
| County | Jan-December, 2003 | | | Jan-December, 2002 | | Jan-December, 2001 | |
| | Cases | Rate* | Rank | Cases | Rate* | Cases | Rate* |
| Abbeville | 51 | 192.4 | 26 | 59 | 223.5 | 38 | 144.4 |
| Aiken | 202 | 135.2 | 36 | 199 | 135.3 | 225 | 156.4 |
| Allendale | 58 | 501.3 | 3 | 72 | 628.8 | 80 | 724.3 |
| Anderson | 308 | 181.6 | 29 | 292 | 173.5 | 216 | 127.8 |
| Bamberg | 58 | 355.0 | 7 | 54 | 328.3 | 87 | 530.7 |
| Barnwell | 30 | 125.0 | 37 | 48 | 201.5 | 40 | 170.0 |
| Beaufort | 144 | 112.5 | 38 | 113 | 89.9 | 141 | 112.6 |
| Berkeley | 120 | 79.5 | 41 | 168 | 113.3 | 154 | 106.9 |
| Calhoun | 10 | 64.9 | 44 | 22 | 143.4 | 17 | 110.7 |
| Charleston | 1,157 | 366.1 | 6 | 1,008 | 321.0 | 1,030 | 330.1 |
| Cherokee | 114 | 211.6 | 18 | 122 | 228.3 | 97 | 182.5 |
| Chester | 65 | 188.9 | 27 | 77 | 224.6 | 40 | 117.5 |
| Chesterfield | 83 | 193.2 | 24 | 85 | 198.1 | 86 | 199.9 |
| Clarendon | 80 | 242.6 | 15 | 96 | 292.5 | 78 | 237.9 |
| Colleton | 42 | 107.0 | 39 | 43 | 110.5 | 87 | 225.7 |
| Darlington | 210 | 310.2 | 12 | 177 | 261.8 | 228 | 336.2 |
| Dillon | 127 | 417.5 | 4 | 128 | 419.4 | 126 | 407.4 |
| Dorchester | 153 | 149.2 | 35 | 83 | 82.6 | 101 | 102.3 |
| Edgefield | 41 | 163.2 | 32 | 27 | 108.2 | 49 | 200.2 |
| Fairfield | 58 | 242.3 | 16 | 50 | 210.3 | 84 | 354.4 |
| Florence | 339 | 264.0 | 14 | 373 | 292.5 | 439 | 346.7 |
| Georgetown | 106 | 185.0 | 28 | 111 | 195.4 | 130 | 227.3 |
| Greenville | 607 | 155.5 | 33 | 511 | 132.1 | 277 | 71.6 |
| Greenwood | 280 | 413.8 | 5 | 172 | 256.0 | 255 | 382.0 |
| Hampton | 253 | 1169.1 | 1 | 34 | 157.7 | 51 | 238.2 |
| Horry | 440 | 211.4 | 19 | 432 | 211.4 | 492 | 243.1 |
| Jasper | 41 | 194.2 | 23 | 15 | 71.6 | 26 | 124.9 |
| Kershaw | 97 | 178.8 | 30 | 76 | 141.5 | 69 | 129.2 |
| Lancaster | 123 | 199.4 | 21 | 101 | 164.0 | 126 | 204.8 |
| Laurens | 74 | 103.5 | 40 | 52 | 73.4 | 87 | 124.0 |
| Lee | 66 | 324.0 | 10 | 49 | 241.5 | 79 | 393.2 |
| Lexington | 166 | 73.4 | 42 | 133 | 59.7 | 153 | 69.5 |
| Marion | 189 | 528.8 | 2 | 142 | 398.3 | 123 | 349.5 |
| Marlboro | 93 | 327.6 | 9 | 75 | 262.9 | 134 | 467.7 |
| McCormick | 23 | 221.4 | 17 | 8 | 78.1 | 22 | 217.4 |
| Newberry | 71 | 192.9 | 25 | 68 | 185.9 | 29 | 79.8 |
| Oconee | 39 | 56.5 | 46 | 15 | 22.0 | 20 | 29.7 |
| Orangeburg | 295 | 316.6 | 11 | 341 | 368.1 | 403 | 441.2 |
| Pickens | 71 | 61.3 | 45 | 32 | 28.1 | 32 | 28.5 |
| Richland | 987 | 301.5 | 13 | 1,053 | 323.9 | 1,115 | 344.9 |
| Saluda | 14 | 72.5 | 43 | 20 | 103.8 | 30 | 157.0 |
| Spartanburg | 446 | 170.3 | 31 | 412 | 158.9 | 453 | 176.1 |
| Sumter | 222 | 203.5 | 20 | 165 | 153.3 | 303 | 290.7 |
| Union | 59 | 198.1 | 22 | 63 | 211.3 | 54 | 182.8 |
| Williamsburg | 131 | 353.5 | 8 | 141 | 380.0 | 256 | 695.5 |
| York | 258 | 149.7 | 34 | 148 | 87.2 | 153 | 89.9 |
| Total | 8,642 | 209.0 | N/A | 7,958 | 194.4 | 8,716 | 214.5 |

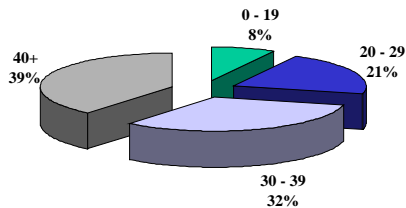
* Case rate per 100,000 population based on census estimates.
Note: STD data may not match previously released data due to a change in the reporting system.
Note: Data in this table are tabulated by date of diagnosis, not date of report. This is a change from earlier
Note: Data are provisional

| Table 16a | | | | | | | |
|---|---------------------------|--------------|-------------|---------------------------|--------------|---------------------------|--------------|
| South Carolina Gonorrhea Cases and Annual Rates per 100,000 Population* By District | | | | | | | |
| Ranking by Rate | | | | | | | |
| District | Jan-December, 2003 | | | Jan-December, 2002 | | Jan-December, 2001 | |
| | Cases | Rate* | Rank | Cases | Rate* | Cases | Rate* |
| Appalachia I | 347 | 145.4 | 12 | 307 | 129.9 | 236 | 99.8 |
| Appalachia II | 678 | 134.0 | 13 | 543 | 108.4 | 309 | 61.9 |
| Appalachia III | 619 | 179.1 | 9 | 597 | 174.3 | 604 | 177.7 |
| Catawba | 446 | 166.2 | 10 | 326 | 122.7 | 319 | 120.0 |
| Edisto | 363 | 290.5 | 2 | 417 | 335.1 | 507 | 411.9 |
| Low Country | 480 | 228.5 | 4 | 205 | 99.0 | 305 | 148.1 |
| Lower Savannah | 290 | 156.8 | 11 | 319 | 174.9 | 345 | 193.3 |
| Palmetto | 1,282 | 208.7 | 8 | 1,304 | 214.4 | 1,381 | 228.8 |
| Pee Dee | 1,041 | 312.0 | 1 | 980 | 294.6 | 1,136 | 342.0 |
| Trident | 1,430 | 251.1 | 3 | 1,259 | 223.7 | 1,285 | 231.6 |
| Upper Savannah | 483 | 219.0 | 6 | 338 | 154.4 | 481 | 221.8 |
| Waccamaw | 677 | 223.8 | 5 | 684 | 229.4 | 878 | 296.2 |
| Wateree | 465 | 214.6 | 7 | 386 | 180.0 | 529 | 251.3 |
| Total | 8,642 | 209.0 | N/A | 7,958 | 194.4 | 8,716 | 214.5 |
| * Case rate per 100,000 population based on census estimates. | | | | | | | |
| Note: STD data may not match previously released data due to a change in the reporting system. | | | | | | | |
| Note: Data in this table are tabulated by date of diagnosis, not date of report. This is a change from earlier reports. | | | | | | | |
| Note: Data are provisional | | | | | | | |

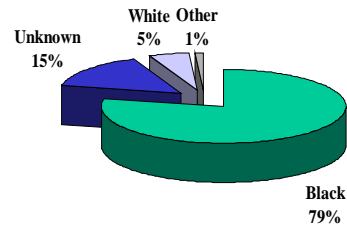
South Carolina Syphilis Cases by Year of Diagnosis by Race and Sex



By Age Group
2003 Cases



By Race
2003 Cases



Note: Data in this table are tabulated by date of diagnosis, not date of report. This is a change from earlier reports.

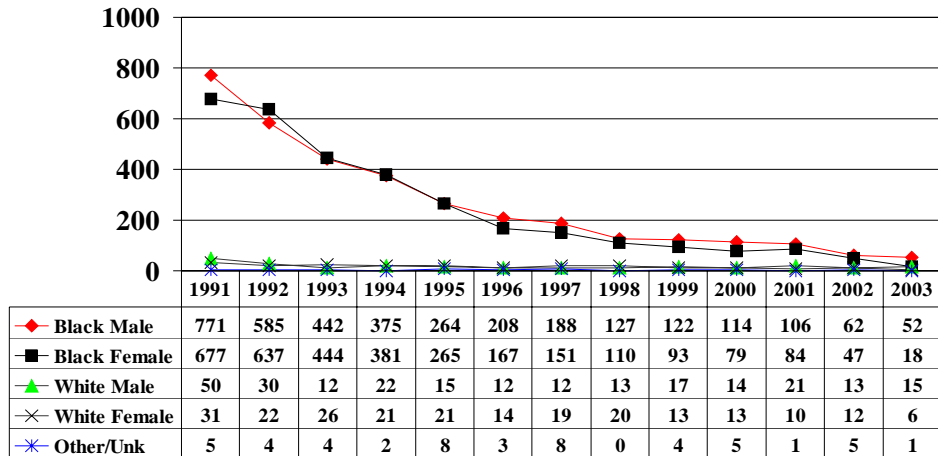
Table 17
South Carolina Total Syphilis Cases and Annual Rates per 100,000 Population* By County
Ranking by Rate

| County | Jan-December, 2003 | | | Jan-December, 2002 | | Jan-December, 2001 | |
|--------------|--------------------|-------------|------------|--------------------|-------------|--------------------|-------------|
| | Cases | Rate* | Rank | Cases | Rate* | Cases | Rate* |
| Abbeville | 3 | 11.3 | 17 | 12 | 45.5 | 3 | 11.4 |
| Aiken | 5 | 3.3 | 42 | 13 | 8.8 | 23 | 16.0 |
| Allendale | 2 | 17.3 | 11 | 1 | 8.7 | 3 | 27.2 |
| Anderson | 26 | 15.3 | 12 | 19 | 11.3 | 24 | 14.2 |
| Bamberg | 2 | 12.2 | 16 | 2 | 12.2 | 4 | 24.4 |
| Barnwell | 1 | 4.2 | 39 | 5 | 21.0 | 4 | 17.0 |
| Beaufort | 6 | 4.7 | 37 | 10 | 8.0 | 7 | 5.6 |
| Berkeley | 3 | 2.0 | 44 | 8 | 5.4 | 5 | 3.5 |
| Calhoun | 1 | 6.5 | 29 | 0 | 0.0 | 3 | 19.5 |
| Charleston | 20 | 6.3 | 30 | 36 | 11.5 | 38 | 12.2 |
| Cherokee | 2 | 3.7 | 41 | 2 | 3.7 | 4 | 7.5 |
| Chester | 31 | 90.1 | 1 | 30 | 87.5 | 17 | 49.9 |
| Chesterfield | 3 | 7.0 | 26 | 3 | 7.0 | 2 | 4.6 |
| Clarendon | 1 | 3.0 | 43 | 12 | 36.6 | 21 | 64.0 |
| Colleton | 3 | 7.6 | 23 | 4 | 10.3 | 6 | 15.6 |
| Darlington | 18 | 26.6 | 5 | 14 | 20.7 | 13 | 19.2 |
| Dillon | 3 | 9.9 | 19 | 4 | 13.1 | 7 | 22.6 |
| Dorchester | 5 | 4.9 | 36 | 8 | 8.0 | 8 | 8.1 |
| Edgefield | 1 | 4.0 | 40 | 9 | 36.1 | 5 | 20.4 |
| Fairfield | 11 | 45.9 | 2 | 9 | 37.8 | 3 | 12.7 |
| Florence | 19 | 14.8 | 13 | 16 | 12.5 | 25 | 19.7 |
| Georgetown | 1 | 1.7 | 45 | 4 | 7.0 | 13 | 22.7 |
| Greenville | 33 | 8.5 | 21 | 23 | 5.9 | 48 | 12.4 |
| Greenwood | 15 | 22.2 | 6 | 23 | 34.2 | 14 | 21.0 |
| Hampton | 2 | 9.2 | 20 | 8 | 37.1 | 25 | 116.8 |
| Horry | 12 | 5.8 | 31 | 38 | 18.6 | 80 | 39.5 |
| Jasper | 0 | 0.0 | 46 | 4 | 19.1 | 4 | 19.2 |
| Kershaw | 3 | 5.5 | 32 | 5 | 9.3 | 13 | 24.3 |
| Lancaster | 5 | 8.1 | 22 | 19 | 30.8 | 22 | 35.8 |
| Laurens | 9 | 12.6 | 15 | 7 | 9.9 | 3 | 4.3 |
| Lee | 1 | 4.9 | 36 | 5 | 24.6 | 15 | 74.7 |
| Lexington | 15 | 6.6 | 28 | 19 | 8.5 | 17 | 7.7 |
| Marion | 4 | 11.2 | 18 | 11 | 30.9 | 9 | 25.6 |
| Marlboro | 2 | 7.0 | 26 | 4 | 14.0 | 10 | 34.9 |
| McCormick | 2 | 19.2 | 10 | 9 | 87.9 | 1 | 9.9 |
| Newberry | 5 | 13.6 | 14 | 3 | 8.2 | 5 | 13.8 |
| Oconee | 3 | 4.3 | 38 | 2 | 2.9 | 0 | 0.0 |
| Orangeburg | 18 | 19.3 | 9 | 10 | 10.8 | 23 | 25.2 |
| Pickens | 6 | 5.2 | 34 | 2 | 1.8 | 3 | 2.7 |
| Richland | 113 | 34.5 | 3 | 126 | 38.8 | 164 | 50.7 |
| Saluda | 1 | 5.2 | 34 | 0 | 0.0 | 2 | 10.5 |
| Spartanburg | 19 | 7.3 | 24 | 19 | 7.3 | 26 | 10.1 |
| Sumter | 30 | 27.5 | 4 | 45 | 41.8 | 104 | 99.8 |
| Union | 2 | 6.7 | 27 | 4 | 13.4 | 3 | 10.2 |
| Williamsburg | 8 | 21.6 | 7 | 10 | 26.9 | 8 | 21.7 |
| York | 35 | 20.3 | 8 | 38 | 22.4 | 49 | 28.8 |
| | | | | | | | |
| Total | 510 | 12.3 | N/A | 655 | 16.0 | 886 | 21.8 |

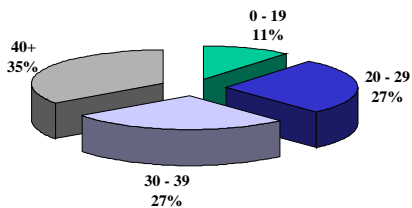
* Case rate per 100,000 population based on census estimates.
 Note: Data in this table includes all syphilis cases, not just infectious syphilis.
 Note: STD data may not match previously released data due to a change in the reporting system.
 Note: Data in this table are tabulated by date of diagnosis, not date of report. This is a change from ea
 Note: Data are provisional

| Table 17a | | | | | | | |
|---|---------------------------|--------------|-------------|---------------------------|--------------|---------------------------|--------------|
| South Carolina Syphilis Cases and Annual Rates per 100,000 Population* By District | | | | | | | |
| Ranking by Rate | | | | | | | |
| District | Jan-December, 2003 | | | Jan-December, 2002 | | Jan-December, 2001 | |
| | Cases | Rate* | Rank | Cases | Rate* | Cases | Rate* |
| Appalachia I | 29 | 12.2 | 7 | 21 | 8.9 | 24 | 10.2 |
| Appalachia II | 39 | 7.7 | 8 | 25 | 5.0 | 51 | 10.2 |
| Appalachia III | 23 | 6.7 | 10 | 25 | 7.3 | 33 | 9.7 |
| Catawba | 71 | 26.5 | 1 | 87 | 32.8 | 88 | 33.1 |
| Edisto | 21 | 16.8 | 3 | 12 | 9.6 | 30 | 24.4 |
| Low Country | 11 | 5.2 | 11 | 26 | 12.6 | 42 | 20.4 |
| Lower Savannah | 8 | 4.3 | 13 | 19 | 10.4 | 30 | 16.8 |
| Palmetto | 144 | 23.4 | 2 | 157 | 25.8 | 189 | 31.3 |
| Pee Dee | 49 | 14.7 | 5 | 52 | 15.6 | 66 | 19.9 |
| Trident | 28 | 4.9 | 12 | 52 | 9.2 | 51 | 9.2 |
| Upper Savannah | 31 | 14.1 | 6 | 60 | 27.4 | 28 | 12.9 |
| Waccamaw | 21 | 6.9 | 9 | 52 | 17.4 | 101 | 34.1 |
| Wateree | 35 | 16.2 | 4 | 67 | 31.2 | 153 | 72.7 |
| Total | 510 | 12.3 | N/A | 655 | 16.0 | 886 | 21.8 |
| * Case rate per 100,000 population based on census estimates. | | | | | | | |
| Note: Data in this table includes all syphilis cases, not just infectious syphilis. | | | | | | | |
| Note: STD data may not match previously released data due to a change in the reporting system. | | | | | | | |
| Note: Data in this table are tabulated by date of diagnosis, not date of report. This is a change from earlier reports. | | | | | | | |
| Note: Data are provisional | | | | | | | |

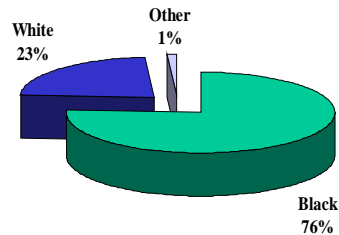
South Carolina Infectious Syphilis Cases by Year of Diagnosis by Race and Sex



By Age Group
2003 Cases



By Race
2003 Cases



Note: Data in this table are tabulated by date of diagnosis, not date of report. This is a change from earlier reports.

| Table 18 | | | | | | | |
|---|--------------------|------------|------------|--------------------|------------|--------------------|------------|
| South Carolina Infectious Syphilis Cases and Annual Rates per 100,000 Population* By County | | | | | | | |
| Ranking by Rate | | | | | | | |
| County | Jan-December, 2003 | | | Jan-December, 2002 | | Jan-December, 2001 | |
| | Cases | Rate* | Rank | Cases | Rate* | Cases | Rate* |
| Abbeville | 0 | 0.0 | 34 | 3 | 11.4 | 1 | 3.8 |
| Aiken | 0 | 0.0 | 34 | 4 | 2.7 | 10 | 6.9 |
| Allendale | 1 | 8.6 | 4 | 0 | 0.0 | 0 | 0.0 |
| Anderson | 16 | 9.4 | 3 | 7 | 4.2 | 14 | 8.3 |
| Bamberg | 0 | 0.0 | 34 | 1 | 6.1 | 0 | 0.0 |
| Barnwell | 0 | 0.0 | 34 | 1 | 4.2 | 1 | 4.3 |
| Beaufort | 0 | 0.0 | 34 | 2 | 1.6 | 1 | 0.8 |
| Berkeley | 0 | 0.0 | 34 | 3 | 2.0 | 1 | 0.7 |
| Calhoun | 0 | 0.0 | 34 | 0 | 0.0 | 0 | 0.0 |
| Charleston | 3 | 0.9 | 19 | 9 | 2.9 | 7 | 2.2 |
| Cherokee | 1 | 1.9 | 14 | 0 | 0.0 | 0 | 0.0 |
| Chester | 7 | 20.3 | 1 | 15 | 43.7 | 11 | 32.3 |
| Chesterfield | 0 | 0.0 | 34 | 1 | 2.3 | 1 | 2.3 |
| Clarendon | 0 | 0.0 | 34 | 4 | 12.2 | 5 | 15.2 |
| Colleton | 1 | 2.5 | 13 | 0 | 0.0 | 1 | 2.6 |
| Darlington | 4 | 5.9 | 7 | 2 | 3.0 | 1 | 1.5 |
| Dillon | 0 | 0.0 | 34 | 1 | 3.3 | 0 | 0.0 |
| Dorchester | 1 | 1.0 | 17 | 2 | 2.0 | 0 | 0.0 |
| Edgefield | 0 | 0.0 | 34 | 0 | 0.0 | 1 | 4.1 |
| Fairfield | 3 | 12.5 | 2 | 7 | 29.4 | 0 | 0.0 |
| Florence | 1 | 0.8 | 21 | 0 | 0.0 | 3 | 2.4 |
| Georgetown | 0 | 0.0 | 34 | 1 | 1.8 | 0 | 0.0 |
| Greenville | 3 | 0.8 | 21 | 4 | 1.0 | 10 | 2.6 |
| Greenwood | 2 | 3.0 | 10 | 1 | 1.5 | 1 | 1.5 |
| Hampton | 0 | 0.0 | 34 | 0 | 0.0 | 5 | 23.4 |
| Horry | 2 | 1.0 | 17 | 7 | 3.4 | 27 | 13.3 |
| Jasper | 0 | 0.0 | 34 | 1 | 4.8 | 0 | 0.0 |
| Kershaw | 0 | 0.0 | 34 | 0 | 0.0 | 3 | 5.6 |
| Lancaster | 1 | 1.6 | 15 | 1 | 1.6 | 0 | 0.0 |
| Laurens | 0 | 0.0 | 34 | 2 | 2.8 | 1 | 1.4 |
| Lee | 0 | 0.0 | 34 | 1 | 4.9 | 3 | 14.9 |
| Lexington | 2 | 0.9 | 19 | 5 | 2.2 | 4 | 1.8 |
| Marion | 0 | 0.0 | 34 | 0 | 0.0 | 2 | 5.7 |
| Marlboro | 0 | 0.0 | 34 | 1 | 3.5 | 1 | 3.5 |
| McCormick | 0 | 0.0 | 34 | 2 | 19.5 | 0 | 0.0 |
| Newberry | 1 | 2.7 | 12 | 0 | 0.0 | 1 | 2.8 |
| Oconee | 0 | 0.0 | 34 | 0 | 0.0 | 0 | 0.0 |
| Orangeburg | 6 | 6.4 | 6 | 3 | 3.2 | 5 | 5.5 |
| Pickens | 0 | 0.0 | 34 | 0 | 0.0 | 0 | 0.0 |
| Richland | 18 | 5.5 | 8 | 24 | 7.4 | 35 | 10.8 |
| Saluda | 0 | 0.0 | 34 | 0 | 0.0 | 0 | 0.0 |
| Spartanburg | 2 | 0.8 | 21 | 0 | 0.0 | 6 | 2.3 |
| Sumter | 7 | 6.4 | 6 | 10 | 9.3 | 39 | 37.4 |
| Union | 0 | 0.0 | 34 | 0 | 0.0 | 0 | 0.0 |
| Williamsburg | 1 | 2.7 | 12 | 0 | 0.0 | 1 | 2.7 |
| York | 9 | 5.2 | 9 | 14 | 8.2 | 20 | 11.7 |
| Total | 92 | 2.2 | N/A | 139 | 3.4 | 222 | 5.5 |

* Case rate per 100,000 population based on census estimates.
Note: STD data may not match previously released data due to a change in the reporting system.
Note: Data in this table are tabulated by date of diagnosis, not date of report. This is a change from earlier rep
Note: Data are provisional

Table 18a

**South Carolina Infectious Syphilis Cases and Annual Rates per 100,000 Population* By District
Ranking by Rate**

| District | Jan-December, 2003 | | | Jan-December, 2002 | | Jan-December, 2001 | |
|----------------|--------------------|------------|------------|--------------------|------------|--------------------|------------|
| | Cases | Rate* | Rank | Cases | Rate* | Cases | Rate* |
| Appalachia I | 16 | 6.7 | 1 | 7 | 3.0 | 14 | 5.9 |
| Appalachia II | 3 | 0.6 | 11 | 4 | 0.8 | 10 | 2.0 |
| Appalachia III | 3 | 0.9 | 9 | 0 | 0.0 | 6 | 1.8 |
| Catawba | 17 | 6.3 | 2 | 30 | 11.3 | 31 | 11.7 |
| Edisto | 6 | 4.8 | 3 | 4 | 3.2 | 5 | 4.1 |
| Low Country | 1 | 0.5 | 13 | 3 | 1.4 | 7 | 3.4 |
| Lower Savannah | 1 | 0.5 | 13 | 5 | 2.7 | 11 | 6.2 |
| Palmetto | 24 | 3.9 | 4 | 36 | 5.9 | 40 | 6.6 |
| Pee Dee | 5 | 1.5 | 6 | 5 | 1.5 | 8 | 2.4 |
| Trident | 4 | 0.7 | 10 | 14 | 2.5 | 8 | 1.4 |
| Upper Savannah | 2 | 0.9 | 9 | 8 | 3.7 | 4 | 1.8 |
| Waccamaw | 3 | 1.0 | 7 | 8 | 2.7 | 28 | 9.4 |
| Waterlee | 7 | 3.2 | 5 | 15 | 7.0 | 50 | 23.8 |
| Total | 92 | 2.2 | N/A | 139 | 3.4 | 222 | 5.5 |

* Case rate per 100,000 population based on census estimates.

Note: STD data may not match previously released data due to a change in the reporting system.

Note: Data in this table are tabulated by date of diagnosis, not date of report. This is a change from earlier reports.

Note: Data are provisional

TECHNICAL NOTES – December 31, 2003

Legal Reporting Requirements in South Carolina

HIV infection and AIDS cases are reportable in South Carolina by law. All physicians, hospitals, laboratories, administrators of health care facilities, charitable or penal institutions, etc., are required to report HIV infections and AIDS cases to DHEC with identifiers (See S.C. Code Ann. Sections 44-29-10, 70, and 80 (Supp. 1989); 24A S.C. Code Ann. Reg. 61-20 (Supp. 1989) and 24A S.C. Code Ann. Reg 61-21 (as amended). All information regarding sexually transmitted diseases including HIV and AIDS, reported to DHEC must be kept strictly confidential (See S.C. Code Ann. Section 44-29-135 (Supp. 1989).

Surveillance and Reporting in South Carolina

Data in this report are provisional. The data are constantly updated to reflect the most accurate statistics. Reporting delays (time between diagnosis and report to DHEC) are as follows: approximately 84% of all AIDS cases are reported within 3 months of diagnosis; approximately 93% are reported within 6 months of diagnosis; about 95% are reported within 9 months diagnosis; approximately 96% are reported within 12 months of diagnosis; and 4% are reported more than 1 year after diagnosis.

Age group tabulations are based on person's age at diagnosis of HIV or AIDS; adult/adolescent cases include persons 13 years and older; pediatric AIDS cases include children under 13 years of age. Pediatric HIV positive children are not included in the HIV data until they are confirmed HIV positive at 18 months of age.

County tabulations are based on person's country of residence in South Carolina at the time of initial diagnosis of AIDS or HIV infection. For statistical purposes, the county data are never updated to reflect the migratory patterns that may occur. AIDS cases that are diagnosed outside of South Carolina are reflected in the out-of-state category. These cases are deemed out-of-state according to the jurisdiction policies set by the National Centers for Disease Control and Prevention (CDC).

Completeness of AIDS case reporting has been assessed in South Carolina. Findings from a validation study of 1999 hospital discharge data indicated that 97% of the inpatient AIDS-related discharges (cases) had been reported to the DHEC HIV/AIDS Surveillance Program ("Improvements in AIDS Case Reporting, South Carolina" JAMA 1991; 265(3):356).

In July of 2001, the CDC sent states an evaluation program to conduct in HARS on the timeliness of HIV and AIDS reports. The results from the project indicated that the South Carolina HIV/AIDS program was well above the standard of 66% of cases reported within six months of diagnosis. The result from the evaluation determined that the timeliness for HIV reporting was 92.7% and AIDS reporting was 87.2% within 6 months. Several factors contribute to these higher percentages:

- 1) HIV surveillance has been conducted since February 1986;

- 2) Both physicians and laboratories are required to report positive EIA/WB, CD4 T-Lymphocyte counts of <200 or <14%, and detected HIV RNA and positive DNA viral load results, and
- 3) Active surveillance activities are conducted by regional surveillance coordinators assigned to 4 areas throughout the state.

CDC's AIDS Case Definition

As of January 1, 1993, the National Centers for Disease Control and Prevention (CDC) AIDS case definition has been expanded to include the following AIDS - defining conditions in people with HIV infection:

CD4T-lymphocyte count less than 200/ μ L or CD4 T-lymphocyte percent of total lymphocytes less than 14%

Pulmonary tuberculosis (TB disease)

Invasive cervical cancer

Recurrent pneumonia, within a 12 month period

According to the Centers for Disease Control and Prevention (CDCP), the expanded HIV classification system and AIDS surveillance case definition is expected to increase the number of reported cases in 1993 by approximately 75%. The immediate increase in case reporting will largely be attributed to the addition of the severe immunosuppression to the definition.

The number of AIDS cases reported in South Carolina during January - March 1993 compared to January - March 1992 increased by 228%. This large increase was mainly attributable to the implementation of the CDC's Expanded HIV Classification system and AIDS surveillance case definition. This increase is also due to the expansion of surveillance efforts throughout South Carolina by the addition of staff referred to as regional surveillance coordinators. These regional surveillance coordinators are located in the 4 largest cities of the state (Charleston, Columbia, Florence, and Greenville) and are responsible for surveillance in the immediate areas surrounding them.

Exposure Categories

A hierarchy of exposure categories designed by the Centers for Disease Control has always been used for surveillance purposes. Persons with more than one reported mode of exposure are classified in the category listed first in the hierarchy, except for men who have sex with other men and inject drugs. They comprise a separate category. In addition, "undetermined" refers to persons whose mode of exposure to HIV is unknown. This includes persons who are currently under investigation, persons who died before exposure history was obtained, persons who are lost to follow-up, or persons who refused to be interviewed. The large numbers of "undetermined" mode of exposure in the HIV data is attributed to the fact that exposure category information is presently only available on persons reported from DHEC clinics. Consequently, this caveat should be taken into consideration when using the HIV exposure category data. In the future, DHEC will be using a combined HIV/AIDS report form designed by the Centers for Disease Control that will allow us to collect mode of exposure for HIV infection in both DHEC clinics and non-DHEC settings.

Rates

Some rates in this report are prevalence rates; they are on a cumulative basis per 100,000 population. The numerators for computing the prevalence rate are based on the cumulative number of AIDS cases or HIV infection by county of residence. The denominators for computing rates are based on the 2000 census data (Division of Research and Statistical Services, State Data Center, South Carolina Budget and Control Board). Each rate is computed as the cumulative number of cases divided by the current year estimated population, multiplied by 100,000. Incidence rates are also included. The numerators for incidence rates are based on the number of AIDS cases or HIV infection during the year of report. Incidence rates are computed as the number of cases in the report year divided by the current year estimated population, multiplied by 100,000.

Case-fatality rates are calculated for each half-year by date of diagnosis. Each 6 month case-fatality rate is calculated as the number of deaths ever reported among cases diagnosed in that period, divided by the number of total cases diagnosed in that period, multiplied by 100. Caution should be used in interpreting case-fatality rates because reporting of deaths is known to be incomplete.