

What is an IIS?

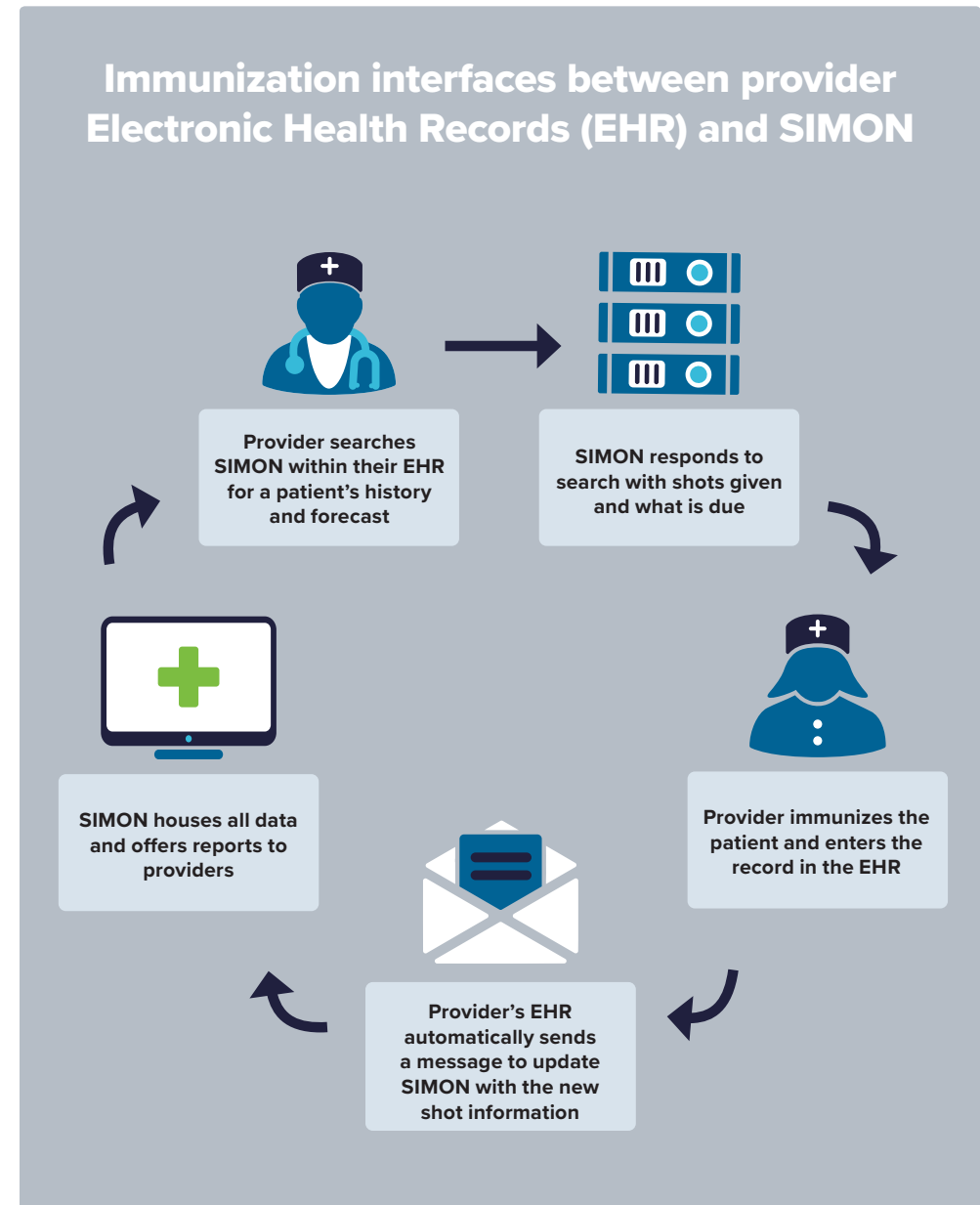
- An IIS is a database that records all vaccine doses administered by participating providers to patients.
- An IIS is used by public and private providers, pharmacists, hospitals, and schools to provide a consolidated record of a person's vaccine history and recommendations for future doses.
- The IIS is a vital part of disease surveillance, outbreak management, and vaccine program continuous quality improvement.

Project Background

DHEC's Division of Immunizations is replacing the South Carolina Immunization (SCI) Registry for the following reasons:

- SCI Registry does not meet national IIS functional requirements, does not stay up to date with changing vaccine schedules, and does not fully integrate with provider's EHR systems.
- A third-party evaluator found many deficiencies for compliance with the national IIS requirements. These must be met for DHEC to continue to receive CDC funding.
- Providers cannot track their vaccine orders and complete accountability information in SCI Registry. Using a manual accounting process increases the risk for error and makes tracking doses difficult.

This material adapted with permission from the Missouri Department of Health and Senior Services.





Project Vision

The new **Statewide Immunization Online Network (SIMON)** will be a dynamic and complete IIS that ensures South Carolinians are protected from vaccine-preventable diseases, by providing direct support to health care providers to deliver immunization services and increase our vaccine coverage rates.



During implementation the current SCI Registry will continue to be available until SIMON goes live.

The options for direct data entry or electronic data exchange will remain available for all providers.

If you have questions:

Please email SIMON@dhec.sc.gov.

New Features for SIMON:

- Vaccine management functionality including inventory, ordering, transfers, wastage, and storage unit features
- Brand-new data quality features are maintained in a more reliable system
- Reminder/recall feature to identify patients who are due or late for immunizations
- Upgraded reporting capabilities for clinicians including provider site, region and population characteristics
- Enhanced electronic exchange with EHR systems including forecast feature
- HL7 onboarding which allows providers to validate and submit messages before being promoted to an active HL7 test facility
- Vaccine deduplication features that help consolidate records from multiple providers into a single record for each patient

SIMON Timetable (subject to change)

March 2019	Purchase of IIS software from Envision Technology Partners				
April 2019	Kickoff meeting	System design and data conversion planning			
May 2019					
June 2019					
July 2019				Feature configuration	
August 2019	DHEC user trainings				
September 2019			Interface development and feature configuration	User acceptance testing	Provider HL7 onboarding
October 2019					
November 2019					
December 2019					
January 2020	Provider user trainings				
February 2020		SIMON goes live			
Ongoing					