



South Carolina Department of Transportation

Commission Workshop

June 19, 2008



# Bridge Replacement Program Update

Jim Feda, Director of Maintenance

Robert Pratt, Director of Preconstruction

June 19, 2008

# 2008/2009 Federal Aid Bridge Replacement Program Recap

- \$125 million in Federal Bridge Replacement (BR) Funds Each Year
  - \$119 million for bridge replacement
  - \$3 million for bridge inspection
  - \$3 million for bridge painting

June 19, 2008

# 2008/2009 FA Bridge Program

District	County	Route	Crossing	Estimated Cost	Project Priority
4	Lancaster	SC 5	Catawba River & S.C.L. Railroad	\$15,610,000	1
4	York	SC 5	Catawba River Relief Bridge		1A
6	Charleston	SC 171	Folly River	\$10,765,000	2
6	Charleston	SC 703	*Intracoastal Waterway (Ben Sawyer Bridge)	\$30,000,000	3
6	Charleston	SC 171	Sol Legare Creek	\$8,615,000	4
7	Calhoun/Richland	US 601	Congaree River	\$37,000,000	5
1	Richland	US 601	Congaree Swamp No. 1		5A
1	Richland	US 601	Congaree Swamp No.2		5B
1	Richland	US 601	Congaree Swamp No. 3		5C
5	Horry/Marion	US 378	Little Pee Dee River	\$34,300,000	6
5	Marion	US 378	Little Pee Dee Swamp No. 1		6A
5	Marion	US 378	Little Pee Dee Swamp No. 2		6B
5	Marion	US 378	Little Pee Dee Swamp No. 3		6C
5	Marion	US 378	Little Pee Dee Swamp No. 4		6D
5	Marion	US 378	Little Pee Dee Swamp No. 5		6E
5	Horry	US 378	Little Pee Dee Swamp		6F
6	Charleston	S-20	Bohicket Creek	\$3,750,000	7
1	Sumter	US 15	SCL Railroad & Street	\$12,500,000	8
5	Florence/Marion	US 378	Great Pee Dee River	\$20,000,000	9
4	York	US 21	Catawba River	\$15,000,000	10
1	Richland	US 176	Broad River	\$25,000,000	11
6	Berkeley	SC 41	Wando River	\$45,000,000	12
5	Georgetown/Horry	US 701	Great Pee Dee River	\$15,335,000	13
5	Georgetown	US 701	Yauhannah Lake		13A
5	Horry	US 701	Great Pee Dee River Overflow		13B
6	Charleston	SC 174	Store Creek	\$1,890,000	14

June 19, 2008





# Bridge Replacement Program FY 2008 and FY 2009 Funding Priorities

SCDOT Commission Workshop

June 19, 2008



● Commission Approved

# Off System Bridge List

- Next group of off system bridges
- Ranked beyond the previous 85 approved last fall

June 19, 2008



# Off System Bridge List

County	Route	Crossing	Ranking	Comments
Chesterfield	S-13-58	THOMPSON CREEK	86	Potential Maintenance replacement project
Charleston	S-10-967	ABBAPOOLA CREEK	87	No Detour, salt water, requires raising bridge grade
Union	S-44-602	PINCKNEY CREEK	88	To long for Maintenance to build
Anderson	S-4-904	ROCKY RIVER	89	Potential Maintenance replacement project
Spartanburg	S-42-893	ENOREE RIVER	90	To long for Maintenance to build
McCormick	S-33-117	LONG CANE CREEK	91	Dirt Road, Will Monitor and make necessary repairs
Jasper	S-27-219	CYPRESS SWAMP #2	92	Potential Maintenance replacement project
Greenwood	S-24-228	BIG ROCK CREEK	93	Potential Maintenance replacement project
Saluda	S-41-449	CLOUDS CREEK	94	Dirt Road, Will Monitor and make necessary repairs
Spartanburg	S-42-45	NORFOLK SOUTHERN RR	95	Railroad
Fairfield	S-20-12	ROCKY CREEK	96	Potential Maintenance replacement project
Aiken	S-2-180	NORFOLK SOUTHERN	97	Railroad
Spartanburg	S-42-201	JIMMIES CREEK	98	Potential Maintenance replacement project
Greenville	S-23-114	MIDDLE TYGER RIVER	99	Potential Maintenance replacement project
Lancaster	S-29-764	HANGING ROCK CREEK	100	Potential Maintenance replacement project
Georgetown	S-22-264	ST. PAULS BRANCH	101	Potential Maintenance replacement project
Oconee	S-37-64	NORFOLK SOUTHERN RR	102	Railroad
Edgefield	S-19-62	MOUNTAIN CREEK	103	Dirt Road, Will Monitor and make necessary repairs
Spartanburg	S-42-186	TRIB TO BUCK CREEK	104	Potential Maintenance replacement project
Greenwood	S-24-62	CUFFEYTOWN CREEK	105	Dirt Road, Will Monitor and make necessary repairs
Saluda	S-41-44	BR TO SALUDA RIVER	106	Dirt Road, Will Monitor and make necessary repairs
Dorchester	S-18-87	TRIB TO POLK SWAMP	107	Potential Maintenance replacement project
Colleton	S-15-116	IRELAND CREEK	108	Potential Maintenance replacement project
McCormick	S-33-79	SAWNEY CREEK	109	Potential Maintenance replacement project
Greenville	S-23-134	BEAVERDAM CREEK	110	Potential Maintenance replacement project
Horry	S-26-611	BR OF INTRACOASTAL W	111	Potential Maintenance replacement project

June 19, 2008



# Off System Bridge List

County	Route	Crossing	Ranking	Comments
Chester	S-12-77	FISHING CREEK	112	To long for Maintenance to build
Aiken	S-2-166	NORFOLK SOUTHERN	113	Railroad
Dorchester	S-18-37	INDIAN FIELD SWAMP	114	Potential Maintenance replacement project
Union	S-44-382	MENG CREEK	115	Potential Maintenance replacement project
Edgefield	S-19-36	MOUTAIN CK	116	Dirt Road, Will Monitor and make necessary repairs
York	S-46-207	STREAM	117	Potential Maintenance replacement project
Berkeley	S-8-126	GRAVEL HILL SWAMP	118	Potential Maintenance replacement project
Spartanburg	S-42-215	BUCK CREEK	119	Potential Maintenance replacement project
Spartanburg	S-42-195	TRIB TO BENS CREEK	120	Potential Maintenance replacement project
Greenville	S-23-318	DAM AT LAKE LANIER	121	Dam
Cherokee	S-11-59	SWOFFORD CREEK	122	Potential Maintenance replacement project
McCormick	S-33-85	HARD LABOR CREEK	123	Potential Maintenance replacement project
Spartanburg	S-42-232	JIMMIES CREEK	124	Potential Maintenance replacement project
Edgefield	S-19-146	DURKES POND BR	125	Dam 60' away, Bedrock foundation
Lancaster	S-29-94	LITTLE CREEK	126	Potential Maintenance replacement project
Edgefield	S-19-100	TURKEY CREEK	127	Dirt Road, Will Monitor and make necessary repairs
Pickens	S-39-235	GEORGES CREEK	128	Potential Maintenance replacement project
Pickens	S-39-47	OOLENOY RIVER	129	Potential Maintenance replacement project
Dorchester	S-18-180	POLK SWAMP	130	Potential Maintenance replacement project
Georgetown	S-22-545	BOND SWAMP	131	Potential Maintenance replacement project
Colleton	S-15-161	TRIB TO CHEHAW RIVER	132	Potential Maintenance replacement project
Horry	S-26-105	WACCAMAW BRANCH	133	Potential Maintenance replacement project
Jasper	S-27-115	MAJOR BRANCH	134	Potential Maintenance replacement project
Union	S-44-279	FAIR FOREST CREEK	135	To long for Maintenance to build
Jasper	S-27-17	ZIG ZAG CREEK	136	In a curve, Power lines overhead, 33' R/W only, 60' replacement
Jasper	S-27-108	CYPRESS CREEK	137	Power line conflict

June 19, 2008

# Off System Bridge List

County	Route	Crossing	Ranking	Comments
Jasper	S-27-115	TRIB GREAT SWAMP	138	Potential Maintenance replacement project
Pickens	S-39-47	TRID TO OOLENOY RIVER	139	Potential Maintenance replacement project
Colleton	S-15-64	INDIAN CREEK	140	Potential Maintenance replacement project
Aiken	S-2-48	HORSE CREEK	141	Transmission Lines
Edgefield	S-19-284	MOUNTAIN CREEK	142	Potential Maintenance replacement project
Richland	S-40-1725	JACKSON CREEK	143	Bridge Over Spillway
Spartanburg	S-42-317	FREY CREEK	144	Potential Maintenance replacement project
Anderson	S-4-140	18 MI. CREEK	145	Potential Maintenance replacement project
Oconee	S-37-538	LONG CREEK	146	Potential Maintenance replacement project
Dillon	S-17-28	LITTLE REEDY RIVER	147	Potential Maintenance replacement project
Edgefield	S-19-114	LOG CREEK	148	Dirt Road, Will Monitor and make necessary repairs
Chesterfield	S-13-67	LYNCHES RIVER	149	To long for Maintenance to build
Spartanburg	S-42-1127	NORFOLK SOUTHERN RR	150	Potential Maintenance replacement project
Jasper	S-27-108	CYPRESS CREEK	151	To long for Maintenance to build
Colleton	S-15-102	WILLOW SWAMP	152	Power line conflict
Williamsburg	S-45-376	BR MC/GIRTS SWAMP	153	Potential Maintenance replacement project
Chester	S-12-196	CLINTON BRANCH	154	Potential Maintenance replacement project
Aiken	S-2-1304	SHAWS CREEK	155	To long for Maintenance to build
Cherokee	S-11-304	BLUE BRANCH	156	Potential Maintenance replacement project
Darlington	S-16-697	NEWMAN & SPARROW SWAMP	157	Potential Maintenance replacement project
Oconee	S-37-88	TOXAWAY CREEK	158	Potential Maintenance replacement project
Fairfield	S-20-214	LITTLE CREEK	159	Potential Maintenance replacement project
Chesterfield	S-13-82	ROCKY CREEK	160	Potential Maintenance replacement project
York	S-46-961	BR DUTCHMAN CR	161	Potential Maintenance replacement project
York	S-46-82	S. FORK FISHING CK	162	Potential Maintenance replacement project
Dillon	S-17-42	BR OF BUCK SWAMP	163	Potential Maintenance replacement project

June 19, 2008



# Off System Bridge List

County	Route	Crossing	Ranking	Comments
Richland	S-40-1058	NICHOLAS CREEK	164	Potential Maintenance replacement project
Abbeville	S-1-36	JOHNSON CREEK	165	Potential Maintenance replacement project
Cherokee	S-11-98	BR GOFORTH CR	166	Potential Maintenance replacement project
Lancaster	S-29-72	TRIB LITTLE LYNCHES RV	167	Potential Maintenance replacement project
Horry	S-26-857	BR OF COWPEN SWP	168	Potential Maintenance replacement project
Cherokee	S-11-49	CHEROKEE CREEK	169	Potential Maintenance replacement project
Richland	S-40-1058	NICHOLAS CREEK	170	Potential Maintenance replacement project
York	S-46-962	BIG DUTCHMAN CREEK	171	Potential Maintenance replacement project
Spartanburg	S-42-82	TRIB TO S.TYGER RIVER	172	Potential Maintenance replacement project
Colleton	S-15-66	TRIB CALFPEN CREEK	173	In a curve, Power line conflict on both sides
York	S-46-657	DUTCHMANS CREEK	174	Potential Maintenance replacement project
Laurens	S-30-26	S.FORK - DUNCAN CK	175	Potential Maintenance replacement project
Oconee	S-37-34	NORFOLK SOUTHERN RR	176	Potential Maintenance replacement project
Marion	S-34-472	BRIAR CREEK	177	Potential Maintenance replacement project
York	S-46-508	CROWDERS CREEK	178	Potential Maintenance replacement project
Chester	S-12-141	ROCKY CREEK	179	To long for Maintenance to build
Laurens	S-30-377	SOUTH RABON CREEK	180	Potential Maintenance replacement project
York	S-46-837	BUCK HORN CREEK	181	Potential Maintenance replacement project
Kershaw	S-28-148	TRIB TO CAMP BRANCH	182	Potential Maintenance replacement project
Colleton	S-15-114	BLACK CREEK	183	In a curve, Power line conflict on both sides
Williamsburg	S-45-147	BENNETT SWAMP	184	Potential Maintenance replacement project
Greenville	S-23-1966	TRIB TO ENOREE RIVER	185	To long for Maintenance to build
Bamberg	S-5-74	LEMON CREEK	186	Potential Maintenance replacement project
York	S-46-181	LITTLE ALLISON CREEK	187	Potential Maintenance replacement project
Cherokee	S-11-265	MANNING CREEK	188	Potential Maintenance replacement project
Horry	S-26-915	SIMPSON CREEK	189	Potential Maintenance replacement project

June 19, 2008



# Off System Bridge List

County	Route	Crossing	Ranking	Comments
McCormick	S-33-53	PERSIMMON CREEK	190	Potential Maintenance replacement project
Horry	S-26-569	BR OF LOUSING SWP	191	Potential Maintenance replacement project
Marlboro	S-35-37	WHITES CREEK	192	Potential Maintenance replacement project
Williamsburg	S-45-570	THORNTREE SWAMP	193	Potential Maintenance replacement project
Chesterfield	S-13-163	ROCKY CREEK	194	Potential Maintenance replacement project
Fairfield	S-20-258	THORNTREE CREEK	195	Potential Maintenance replacement project

June 19, 2008

# 2010-2011 FA Bridge List

<u>County</u>	<u>Route</u>	<u>Crossing</u>	<u>Rank</u>	<u>Comments</u>
McCormick	S-33-19	LITTLE RIVER	15	Use Bonus Funds
Marlboro	US 1	PEE DEE OVERFLOW (NO. 1)	16	To be Repaired by Maintenance, monitor and replace when necessary
Greenville	S-23-47	NORFOLK SOUTHERN RR	17	Removal by RR agreement
Marlboro	US 1	PEE DEE OVERFLOW (NO. 2)	18	To be Repaired by Maintenance, monitor and replace when necessary
Sumter	US 76	WATEREE RIVER SWP-1	19	Use Bonus Funds
Sumter	US 76	WATEREE RIVER SWP-3	20	Include with Bonus Program
Richland	US 76	MILL CREEK	21	
Sumter	US 76	WATEREE RIVER SWP-2	22	Include with Bonus Program
Charleston	US 78	S.C.L. RR & S-39	23	
Fairfield	S-20-20	BIG WATEREE CREEK	24	Replace by Maintenance
Charleston	US 17	ASHLEY RIVER	25	Being monitored due to scour, do not replace
Horry	S-26-31	WACCAMAW RIVER SWAMP	26	
York	S-46-22	STEEL CREEK	27	
Chester	SC 9	BROAD RIVER	28	
Laurens	SC 49	ENOREE RIVER	29	
Sumter	US 76	SCAPE ORE CREEK	30	
Charleston	SC 174	SAND CREEK	31	
Beaufort	US 21	ALBERGOTTI CREEK	32	
Sumter	US 76 BYP	U.S. 521	33	
Newberry	S-36-642	N BR SCOTTS CK	34	

June 19, 2008

# 2010-2011 FA Bridge List (cont.)

<u>County</u>	<u>Route</u>	<u>Crossing</u>	<u>Rank</u>	<u>Comments</u>
Charleston	S-10-379	NOISETTE CREEK	35	
York	SC 72	FISHING CREEK	36	
Union	S-44-86	BIG BROWN CREEK	37	
Chester	SC 97	ROCKY CREEK	38	
Darlington	US 52	BLACK CREEK	39	
Cherokee	S-11-41	FURNACE CREEK	40	
Cherokee	US 29	SOUTHERN RAILROAD	41	
Horry	S-26-31	WACCAMAW SWAMP	42	
Horry	S-26-31	WACCAMAW SWAMP	43	
Horry	S-26-31	WACCAMAW RIVER SWAMP	44	
Charleston	S-10-86	SCL RR (L-9999)	45	
Horry	S-26-31	WACCAMAW RIVER SWAMP	46	
Charleston	SC 174	RUSSELL CREEK	47	
Charleston	SC 7	SCL & SOUTHERN RR__S-39	48	
Orangeburg	US 78	EDISTO RIVER	49	
Edgefield	US 25	TURKEY CREEK	50	
Greenwood	SC 72 BUS	CSX RAIL ROAD_(ABAND)	51	
Union	SC 9	BROAD RIVER CANAL	52	
Horry	SC 917	LITTLE PEE DEE RIVER	53	

June 19, 2008



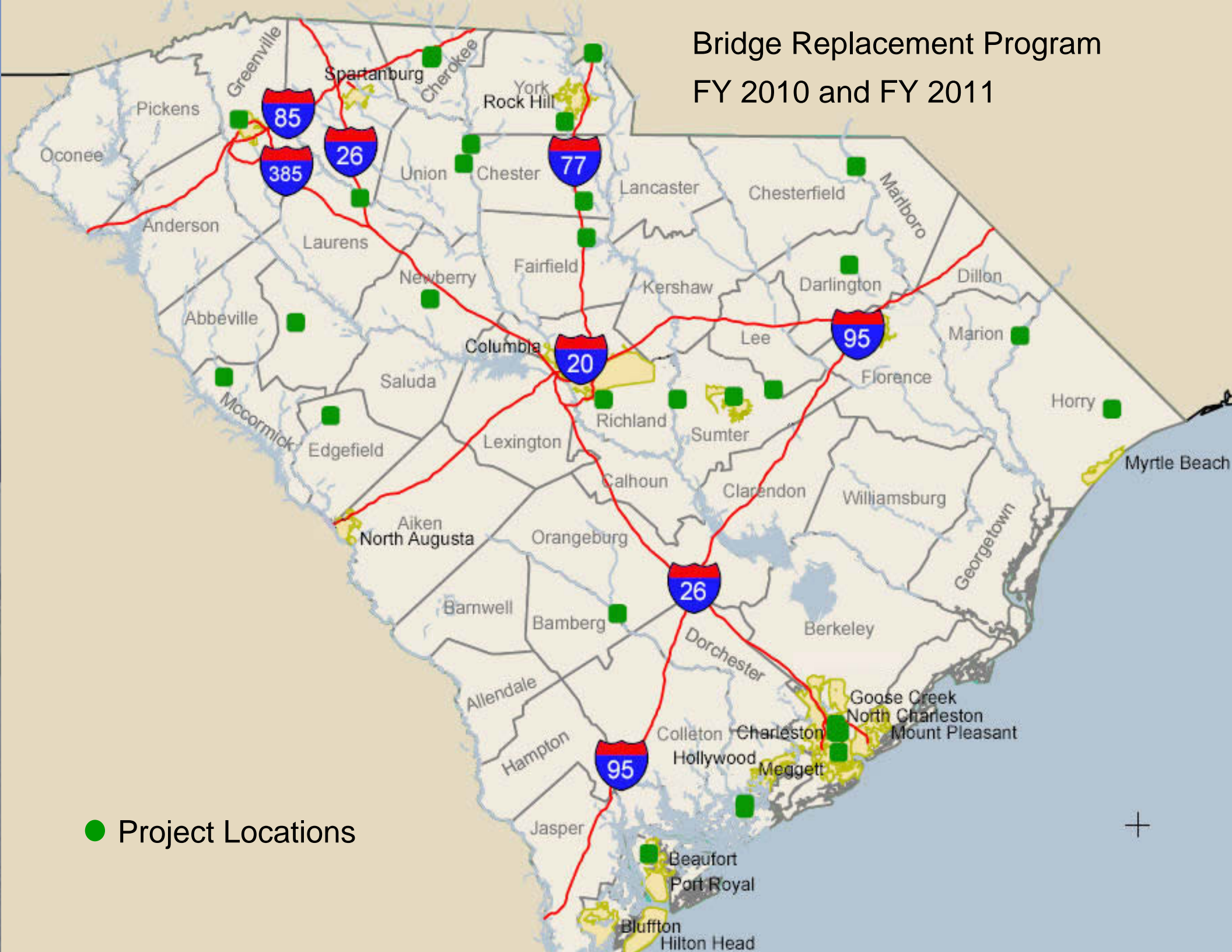


# Bridge Replacement Programs FY 2010 and FY 2011 Funding Priorities

SCDOT Commission Workshop

June 19, 2008

# Bridge Replacement Program FY 2010 and FY 2011



● Project Locations



# Bridge Replacement Program

Priorities 15 – 26, 42-44, 46 depicting all bridge replacements for developing projects:

RECOMMENDED BRIDGE REPLACEMENT PROJECTS FOR FY 2010 & 2011							
Bridge ID	District	County	Route	Crossing	Rank	Estimated Cost	Notes
3370001900100	2	McCORMICK	S-33-19	LITTLE RIVER	15	\$2,300,000	"Bonus" BR Funds to be used
3520000130200	5	MARLBORO	US 1	SBL - PEE DEE OVERFLOW (NO. 1)	16		To be repaired by Maintenance
2370004700100	3	GREENVILLE	S-23-47	NORFOLK SOUTHERN RR	17		To be removed per RR Agreement
3520000130300	5	MARLBORO	US 1	SBL - PEE DEE OVERFLOW (NO. 2)	18		To be repaired by Maintenance
4320007620200	1	SUMTER	US 76	EBL - WATEREE RIVER SWAMP-1	19	\$20,000,000	\$7,200,000 of "Bonus" BR Funds to be used
4320007620400	1	SUMTER	US 76	EBL - WATEREE RIVER SWAMP-3	20		
4320007620300	1	SUMTER	US 76	EBL - WATEREE RIVER SWAMP-2	22		
4020007620300	1	RICHLAND	US 76	EBL - MILL CREEK	21	\$6,500,000	
1020007800400	6	CHARLESTON	US 78	S.C.L. RR & S-39	23	\$15,000,000	
2070002000100	4	FAIRFIELD	S-20-20	BIG WATEREE CREEK	24		To be replaced by Maintenance
1020001710600	6	CHARLESTON	US 17	NBL - ASHLEY RIVER	25		Rehabilitated - Monitoring for scour
2670003100500	5	HORRY	S-26-31	WACCAMAW RIVER SWAMP	26	\$10,000,000	
2670003100200	5	HORRY	S-26-31	WACCAMAW SWAMP	42		
2670003100100	5	HORRY	S-26-31	WACCAMAW SWAMP	43		
2670003100400	5	HORRY	S-26-31	WACCAMAW RIVER SWAMP	44		
2670003100300	5	HORRY	S-26-31	WACCAMAW RIVER SWAMP	46		



# Bridge Replacement Program

Priorities 27-38, 52, 120 depicting all bridge replacements for developing projects:

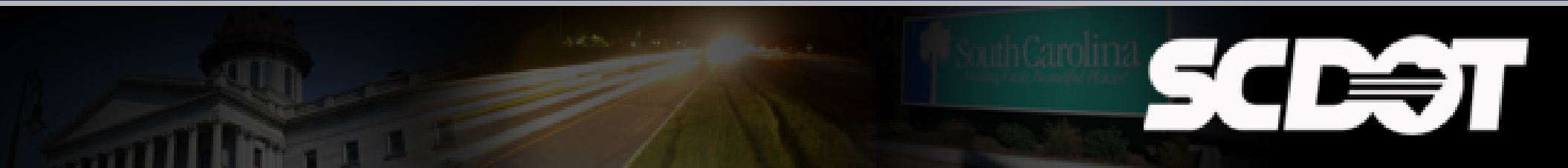
RECOMMENDED BRIDGE REPLACEMENT PROJECTS FOR FY 2010 & 2011							
Bridge ID	District	County	Route	Crossing	Rank	Estimated Cost	Notes
4670002200300	4	YORK	S-46-22	STEEL CREEK	27	\$6,500,000	
1240000900100	4	CHESTER/UNION	SC 9	BROAD RIVER	28	\$17,000,000	Added due to necessary alignment shift
4440000900400	4	UNION	SC 9	BROAD RIVER CANAL	52		
4440000900300	4	UNION	SC 9	S-46	120		
4440000900200	4	UNION	SC 9	S-31	Not Ranked		
3040004900400	2	LAURENS	SC 49	ENOREE RIVER	29	\$8,000,000	
4320007601200	1	SUMTER	US 76	SCAPE ORE CREEK	30	\$3,900,000	
1040017400300	6	CHARLESTON	SC 174	SAND CREEK	31	\$3,000,000	
0720002100600	6	BEAUFORT	US 21	ALBERGOTTI CREEK	32	\$5,000,000	
4320007605100	1	SUMTER	US 76 BYP	US 521	33	\$6,000,000	
3670064200100	2	NEWBERRY	S-36-642	NORTH BRANCH OF SCOTTS CREEK	34	\$1,900,000	
1070037900100	6	CHARLESTON	S-10-379	NOISETTE CREEK	35	\$4,400,000	
4640007200200	4	YORK	SC 72	FISHING CREEK	36	\$8,000,000	
4470008600300	4	UNION	S-44-86	BIG BROWN CREEK	37	\$1,700,000	
1240009700800	4	CHESTER	SC 97	ROCKY CREEK	38	\$6,500,000	

# Bridge Replacement Program

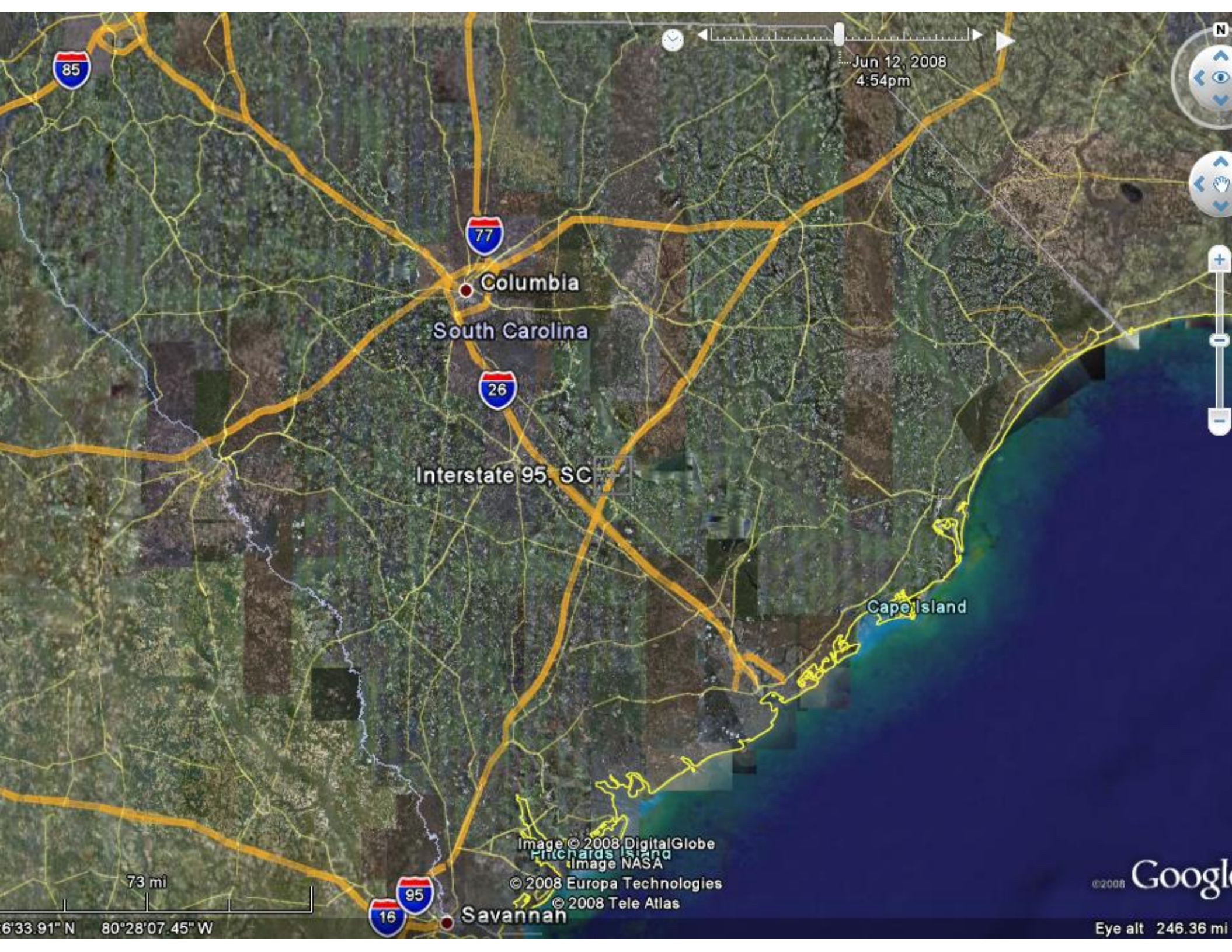
Priorities 39-41, 45, 47-53, 281, 445 depicting all bridge replacements for developing projects:

RECOMMENDED BRIDGE REPLACEMENT PROJECTS FOR FY 2010 & 2011							
Bridge ID	District	County	Route	Crossing	Rank	Estimated Cost	Notes
1620005200300	5	DARLINGTON	US 52	BLACK CREEK	39	\$6,500,000	
1170004100200	4	CHEROKEE	S-11-41	FURNACE CREEK	40	\$1,100,000	
1120002900500	4	CHEROKEE	US 29	SOUTHERN RAILROAD	41	\$1,700,000	
1070008600100	6	CHARLESTON	S-10-86	SCL RR (L-9999)	45	\$8,500,000	
1040017400200	6	CHARLESTON	SC 174	RUSSELL CREEK	47	\$5,500,000	
1040000700200	6	CHARLESTON	SC 7	SCL & SOUTHERN RR & S-39	48	\$29,000,000	
3820007800100	7	BAMBERG/ORANGEBURG	US 78	EDISTO RIVER	49	\$17,500,000	Added due to necessary alignment shift
0520007800400	7	BAMBERG	US 78	EDISTO RIVER OVERFLOW	445		
3820007800200	7	ORANGEBURG	US 78	EDISTO RIVER OVERFLOW	281		
1920002500400	2	EDGEFIELD	US 25	TURKEY CREEK	50	\$4,000,000	
2440007203200	2	GREENWOOD	SC 72 BUS	CSX RAILROAD (ABANDONED)	51	\$5,000,000	
2640091700100	5	HORRY/MARION	SC 917	LITTLE PEE DEE RIVER	53	\$14,500,000	Added due to necessary alignment shift
3440091700200	5	MARION	SC 917	LITTLE PEE DEE RIVER SWAMP	Not Ranked		

# I-95 Corridors of the Future Project Recommendation







85

77

26

Interstate 95, SC

95

16

Savannah

Columbia

South Carolina

Cape Island

Image © 2008 DigitalGlobe  
Image NASA

© 2008 Europa Technologies

© 2008 Tele Atlas

Jun 12, 2008  
4:54pm



73 mi

6°33.91' N 80°28'07.45' W

Google

Eye alt 246.36 mi



Jun 12, 2008  
4:54pm

I-95/I-26 interchange

26  
601  
21  
301

178

78

95

176

Dorchester

15

17

© 2008 Tele Atlas  
© 2008 Europa Technologies  
Image NASA

Google

16.46 mi

9°03.18' N 80°32'40.74' W

Eye alt 56.69 m







# I-95 Project recommendation

Recommended Motion by Commission:

Move that the Commission approve the recommendations of staff to develop and construct a project to improve operational features at the I-95/I-26 interchange using the Corridors of the Future Funding.

