

# SCSL Digital Collections

## Greer, South Carolina

Item Type	Text
Publisher	South Carolina State Library
Rights	Copyright status undetermined. For more information contact, South Carolina State Library, 1500 Senate Street, Columbia, South Carolina 29201.
Download date	2024-11-14 22:06:41
Link to Item	<a href="http://hdl.handle.net/10827/286">http://hdl.handle.net/10827/286</a>

D4925  
2.G63-4  
1985  
Copy 1

# GREER

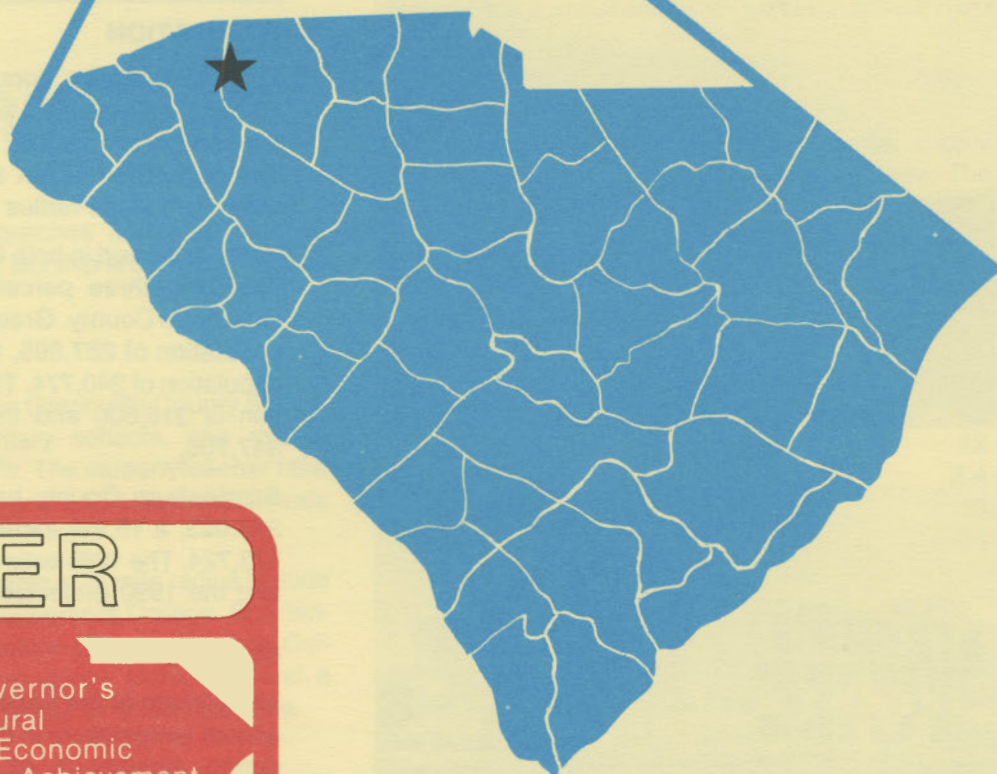
# south carolina

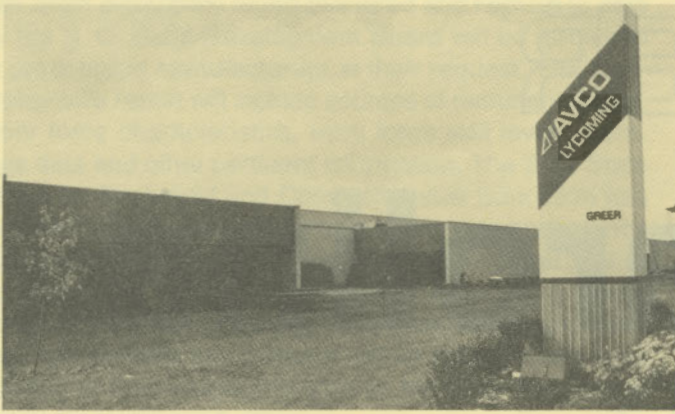


S. C. STATE LIBRARY

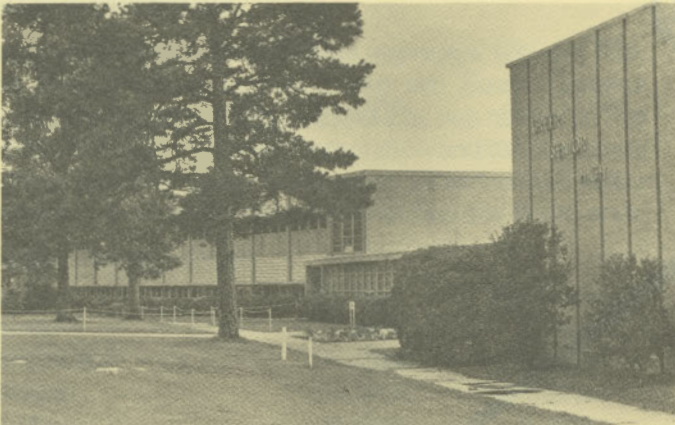
DEC 1 1 1985

STATE DOCUMENTS

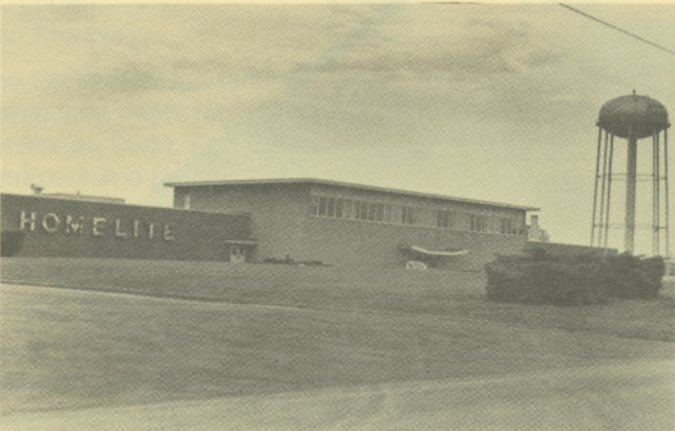




Avco Lycoming — Greer Division



Greer Senior High School



Homelite



Greenville Technical College  
Administration Building

## LOCATION

As depicted on the cover, Greer is in the northwestern section of the state situated in both Greenville and Spartanburg counties. Charleston, South Carolina's busiest port, is 210 miles southeast. Columbia is 100 miles southeast, Greenville is ten miles west and Spartanburg is 18 miles east. Greer is 156 miles east of Atlanta; 680 miles south of New York; and 2,679 miles east of San Francisco.



## POPULATION

The 1980 census population of the city of Greer was 10,525. This was a 1.1% decrease from the 1970 population of 10,642. The 1982 estimated population was 10,874. The population within a 15-mile radius is 344,202 and within a 30-mile radius is 660,034.

Greer is located in both Greenville and Spartanburg counties. Sixty-three percent of the population resides in Greenville County. Greenville County had a 1980 census population of 287,895, a 19.6% increase over the 1970 population of 240,774. The 1985 estimated county population is 316,600 and the 1990 projected population is 347,700.

Spartanburg County had a 1980 census population of 203,023, a 16.9% increase from the 1970 population of 173,724. The 1985 estimated county population is 218,100 and the 1990 projected population is 236,100.

## CLIMATE

The climate in the Greer area is temperate with a mean annual temperature of 60.6° F. The average temperature during January is 42.3° F, while the average July temperature is 78.3° F. The average relative humidity daily is 78% at 1:00 a.m.; 82% at 7:00 a.m.; 54% at 1:00 p.m.; 64% at 7:00 p.m.

The mean annual precipitation in the Greer area is 47.54 inches and the average growing season is 225 days. The elevation of Greer is 1,037 feet above sea level.

## COMMUNICATIONS

The weekly *Greer Citizen* is published in the city, and four dailies circulate in the community. Radio stations WCKI and WEAB have AM broadcast facilities in the community. Television reception in the community is available from four stations, representing the three major networks, and educational television. Cable TV and HBO are available in the community. Telephone service is provided by Southern Bell of BellSouth Corporation.

## GOVERNMENT

The community has a council form of municipal government. The six city council members and the mayor are elected for four-year terms. Greenville County is governed locally by a council-administrator form of government, whose 12 members are elected for two-year terms.

## POLICE AND FIRE

The Greer Police Department has 38 full-time police officers. The department operates 13 radio equipped patrol cars. The Fire Department has 13 full-time and 17 volunteer firemen who operate three pumper trucks. Greer's insurance rating is Class 4.

## FINANCIAL INSTITUTIONS

Greer has four banks and three savings and loan associations to serve the financial needs of the community. The banks have total assets of \$4.6 billion, while the savings and loans have assets of \$2.7 billion.

## HOTELS AND MOTELS

The community has two motels. Greenville, 14 miles away, has over 2,000 hotel and motel accommodations.

## CHURCHES

Greer has 49 Protestant churches and one Catholic church. Two Jewish houses of worship are located in nearby Greenville.

## EDUCATION

Greer, which is included in the Greenville County School System, has seven elementary schools, one middle school, and three high schools. The student/teacher ratio is 17.4 to 1, with 376 teachers and 6,559 students. Private schooling is available in the county.

Higher educational facilities within a 20-mile radius include two technical colleges, North Greenville College, Spartanburg Methodist College, Converse College, Wofford College, Furman University, Bob Jones University and a regional campus of the University of South Carolina.

## MEDICAL SERVICES

Medical services in the community are provided by the 86-bed Allen Bennett Memorial Hospital, a satellite hospital of the Greenville General Hospital. The 80-bed Roger S. Huntington Nursing Center is located adjacent to Allen Bennett Memorial Hospital. Greer HealthCare, Inc., a nursing facility with 132 beds, offers skilled and

intermediate nursing services, a full range of therapy — speech and hearing, physical therapy, patient activities and social services. The community has 31 privately-practicing medical doctors and eight privately-practicing dentists.

## RECREATION AND CIVIC FACILITIES

Recreation facilities in the community consist of three recreation centers and nine public parks with organized recreation programs supervised by a full-time staff. The recreation centers and parks have facilities for youths and adults. For golfers, the Greer Country Club offers an 18-hole course. Numerous other courses are located within 15 miles of the city. Concerts, exhibits, museums, dramatic presentations, collegiate spectator sports and other forms of entertainment and recreation are available in nearby Greenville and Spartanburg.

## POWER

Electric power is available to the community and surrounding areas from Duke Power Company. Duke Power, the nation's eighth-largest investor-owned operating electric utility, provides installation of service to industrial customers at no cost to the customer in most cases.

Duke Power Company representatives are available to assist industrial prospects at no cost or obligation in analyzing their electricity needs.

## FUELS

Natural gas is supplied by the Greer Commission of Public Works.

## WATER

The community obtains its municipal water supply from Lake Cunningham on the South Tyger River. The filter plant is capable of supplying water at a maximum rate of 12,000,000 gallons per day, with an average daily demand of 4,000,000 gallons. Treated water storage consists of 1,600,000 gallons in elevated storage and a 3,000,000-gallon ground-level storage tank.

Analysis of water supplied in the community:

Total solids	40 mg/L
Alkalinity	12 mg/L
Calcium	2.4 mg/L
Hardness	10 mg/L
Iron	.05 mg/L
pH	6.2

## SEWER

The Commission of Public Works utilizes two treatment plants to dispose of the city's wastewater. The extended aeration treatment plant on Maple Creek has a 1,750,000-gallon daily capacity, and averages 948,000 gallons daily. The trickling filter treatment plant on the Tyger River has a 1,750,000-gallon daily capacity, and averages 822,000 gallons daily.

## LABOR

Because labor information may change in this area, a cur-



rent labor availability report prepared and kept up to date by the S. C. State Development Board will be furnished to prospective manufacturers at their request. The comprehensive report will include sources of recruitable labor, labor force characteristics, work force skill levels, earnings data and other pertinent information. The S. C. State Board for Technical and Comprehensive Education has the resources to recruit and train workers in accordance with a company's entry criteria. This training is at little or no cost to the employer. A lead-time schedule is developed to coordinate recruiting, testing, selecting, and training. This assures that persons will be able to move from training to their respective jobs at the time the plant is ready for initial production.

## TRANSPORTATION

Greer is served by two interstate highways, I-85 and I-26, one United States highway, and two South Carolina highways. The community is served by two railroads: The Norfolk Southern Railroad Corporation and the Seaboard System Railroad. Greer is served by 52 authorized motor carriers, four of which have terminal facilities in the area.

### Freight Delivery Times:

To:	By Rail:	By Truck:
Atlanta	2 days	1 day
Baltimore	3 days	3 days
Chicago	4 days	3 days
Houston	6 days	3 days
New York	4 days	4 days
St. Louis	4 days	4 days
San Francisco	6 days	5 days

The Greenville-Spartanburg Airport, four miles from the community, offers regularly scheduled commercial airline service on Delta, American, Eastern, U.S. Air, Sunbird, Piedmont and Bankair. Private aircraft utilize the Greenville Downtown Airport, which has paved and lighted run-

ways of 5,390 and 4,000 feet. Services available at the two airports are major airframe and major powerplant repairs, RBn, 100LL and Jet A fuel, Vortac, and Unicom.

## FOREIGN TRADE ZONE

A Foreign Trade Zone is located in Summerville, South Carolina, 25 miles from the Port of Charleston and 185 miles from the community. The Foreign Trade Zone allows manufacturers to store, manufacture or process goods without paying U.S. Customs duties or worrying about quota compliance. This Foreign Trade Zone is served by a multimode transportation network which provides excellent accessibility to market areas.

## TAXES

The assessment on industrial property in South Carolina is 10.5% of the market value. New industry is granted a five-year moratorium on general county taxes (with the exception of school taxes). The city tax rate is \$11.81 per \$100 of assessed value. The county rate is \$12.67 per \$100 of assessed value. The effective city tax rate (tax liability per \$100 of market value) is \$1.24. The effective county rate is \$1.33. The state has no tax on a manufacturer's inventories, goods-in-process, raw materials or finished goods. Treatment facilities or equipment of manufacturing plants which control water or air pollution are exempt from all property taxation.

## INDUSTRIAL SITES

Industrial sites are available in Greer with a wide range of geographic and topographic features. In all probability, a site that will meet the needs of most industries' requirements has been identified, catalogued, and entered into the State Development Board's Computerized Site Selection System. Detailed site information is available and will be furnished upon request.

## MAJOR EMPLOYERS

Name	Product or Service	Employees
American Hoechst Corp. — Film Div.	Polyester film	1,019
Avco Lycoming — Greer Div.	Blades and discs	400
Carolina Sue, Inc.	Children's blouses	129
General Battery Corp.	Batteries	239
Homelite	Chain saw components and pumps	498
Shepsal Plant	Men's and boys' shirts	201
J. P. Stevens & Co., Inc.	Woven corduroy	250
United Furniture Mfg., Inc.	Sofas, love seats and chairs	215

For Additional Information Contact:

SOUTH CAROLINA STATE DEVELOPMENT BOARD  
 P. O. Box 927, Columbia, South Carolina 29202  
 (803) 758-3145