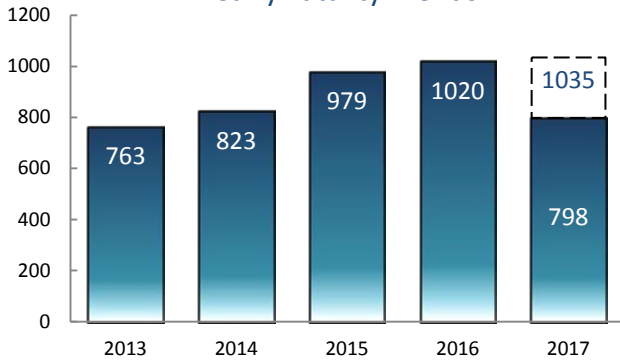


SOUTH CAROLINA TRAFFIC FATALITY REPORT FOR 2017

Statistics through October 2017

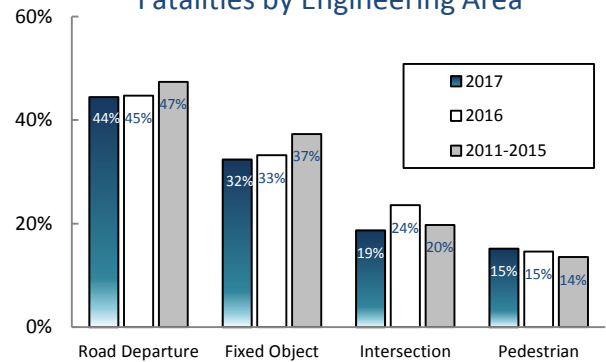
(All 2017 data is preliminary)

Yearly Fatality Trends



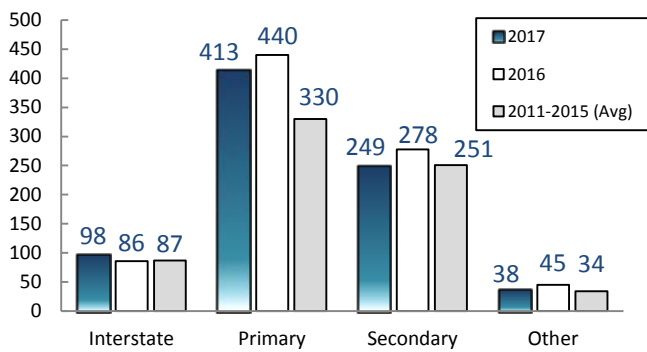
There were 798 reported fatalities through October 2017, which is 51 less than in 2016. Based on the current year's rate, we would end 2017 with 1035 fatalities, which would be highest since 2007.

Fatalities by Engineering Area



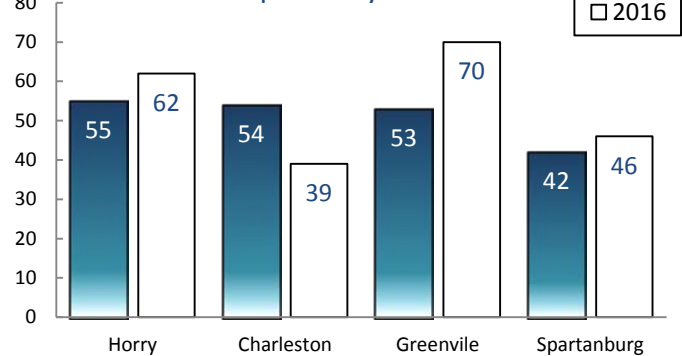
Nearly half of all fatal crashes this year have been the result of a road departure. Over 70% of those fatalities struck a fixed object.

Fatalities by Route Category



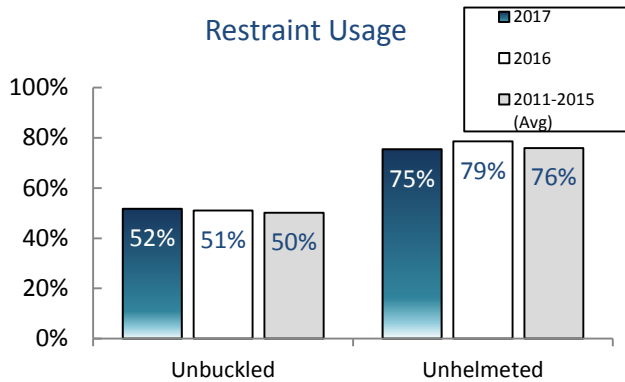
All route categories with the exception of interstates have seen a decrease from last year. However, traffic deaths on primary roads have increased significantly compared to its previous five-year average.

Top Fatality Counties



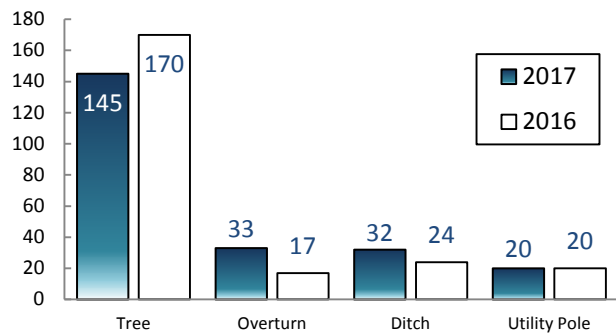
Every county in South Carolina has experienced at least 3 traffic fatalities in 2017.

Restraint Usage



Choosing not to buckle up or wear a helmet continues to play a significant factor in highway deaths.

Top Fatal Roadway Departure Crash Events



Vehicles striking a tree remains the leading factor in road departure related fatalities.