

AGENCY NAME:	Commission on Higher Education		
AGENCY CODE:	H030	SECTION:	11

Fiscal Year 2016-2017 Accountability Report

SUBMISSION FORM

AGENCY MISSION	The S.C. Commission on Higher Education is committed to promoting access, affordability, and affordability in the state system of higher education through coordination, regulation, advocacy and oversight, as directed by the General Assembly.
-----------------------	---

AGENCY VISION	<p>The S.C. Commission on Higher Education values the:</p> <ul style="list-style-type: none"> • Importance of quality higher education • Accessibility of this education to the citizens of the state • Accountability of the institutions to their students and the General Assembly • Excellence on the part of its staff in performing its functions • Excellence on the part of the institutions in providing educational opportunities • Affordability of higher education in South Carolina to the citizens of the state
----------------------	--

Please select yes or no if the agency has any major or minor (internal or external) recommendations that would allow the agency to operate more effectively and efficiently.

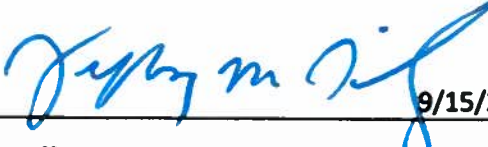
RESTRUCTURING RECOMMENDATIONS:	Yes	No
	<input type="checkbox"/>	<input checked="" type="checkbox"/>


Please identify your agency's preferred contacts for this year's accountability report.

	<i>Name</i>	<i>Phone</i>	<i>Email</i>
PRIMARY CONTACT:	Morgan O'Donnell	803-737-3921	modonnell@che.sc.gov
SECONDARY CONTACT:	Katie Philpott	803-606-7496	kphilpott@che.sc.gov

AGENCY NAME:	Commission on Higher Education		
AGENCY CODE:	H030	SECTION:	11

I have reviewed and approved the enclosed FY 2016-2017 Accountability Report, which is complete and accurate to the extent of my knowledge.

AGENCY DIRECTOR (SIGN AND DATE): (TYPE OR PRINT NAME):	
	9/15/2017 Mr. Jeffrey M. Schilz

BOARD/CMSN. CHAIR (SIGN AND DATE): (TYPE OR PRINT NAME):	
	9/15/2017 Mr. Tim Hofferth

AGENCY NAME:	Commission on Higher Education		
AGENCY CODE:	H030	SECTION:	11

AGENCY'S DISCUSSION AND ANALYSIS

Creation of Agency

The South Carolina Commission on Higher Education (CHE), established in 1967, serves as the coordinating board for South Carolina's 33 public institutions of higher learning. It acts both as an oversight entity on behalf of the General Assembly and an advocate for the citizens of South Carolina as they seek the opportunity to improve their lives, and those of their families, through higher education.

Composition of the Commission

The CHE is governed by a board of 15 members who are appointed by the Governor pursuant to S.C. Code §59-103-10 including: four statewide at-large members, with one appointed as chair; one member from each of the state's seven Congressional Districts; three members who serve as college and university trustees representing the public sectors of higher learning which include research institutions, four-year comprehensive teaching institutions, and technical colleges; and one member who serves as a president of an independent college representing the independent higher learning institutions. Appointees representing Congressional Districts are appointed by the Governor upon recommendation of a majority of the State Senators and House members comprising the District's legislative delegation. The remaining appointees are recommended and appointed based on the advice and consent of the Senate. Commissioners serve four-year terms with the exception of the institutional representatives who serve two-year terms. All members continue to serve until a replacement is named. All except the independent institution representative are voting members.

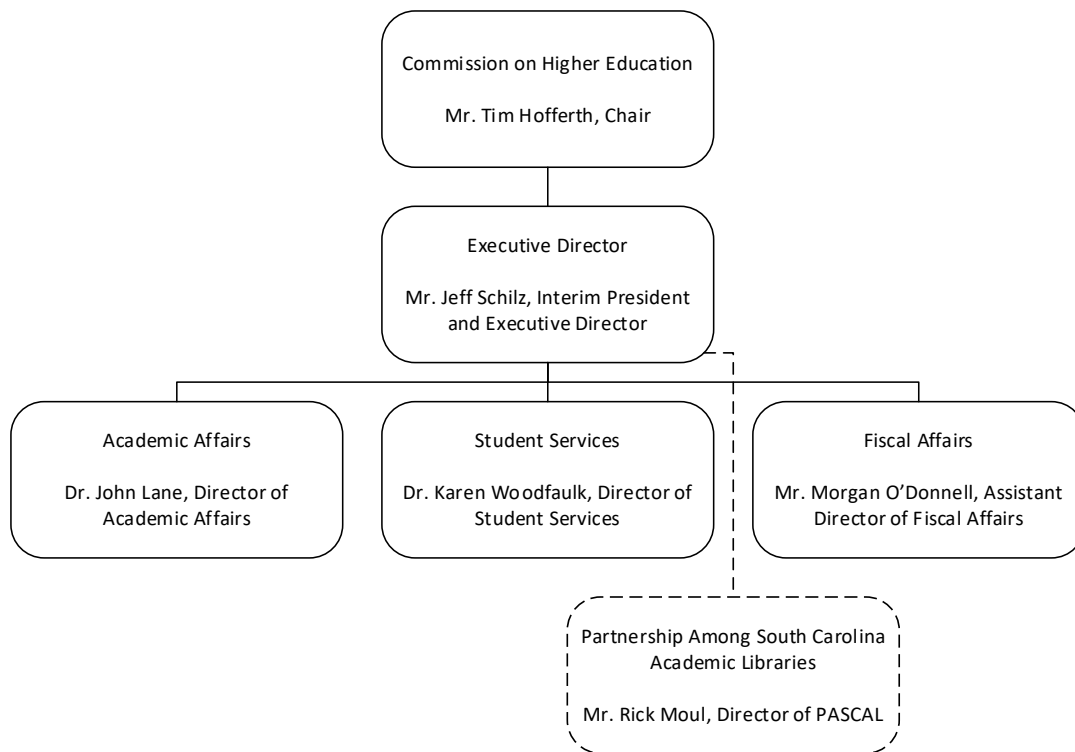
The Commission is currently comprised of the following members:

Mr. Tim M. Hofferth, Chair – Chapin, Governor's Appointment at Large
Ms. Dianne C. Kuhl, Vice Chair – Greer, Governor's Appointment 4th Congressional District
Mr. Paul O. Batson, III – Greer, Governor's Appointment Public Technical Colleges Sector
Mr. Devron H. Edwards – Chapin, Governor's Appointment at Large
Dr. Bettie Rose Horne – Greenwood, Governor's Appointment 3rd Congressional District
Mr. Richard A. Jones, Jr. – Greenville, Governor's Appointment at Large
Mr. Kenneth W. Kirkland – Greenville, Governor's Appointment at Large
Ms. Allison Dean Love – Columbia, Governor's Appointment Four-Year College & University Sector
Dr. Louis B. Lynn – Columbia, Governor's Appointment Research University Sector
Vice Admiral Charles Munns, USN (ret.) – Aiken, Governor's Appointment 2nd Congressional District
Mr. Kim F. Phillips – Gaffney, Governor's Appointment 5th Congressional District
Ms. Terrye C. Seckinger – Mt. Pleasant, Governor's Appointment 1st Congressional District

The current committees consist of the Committee on Academic Affairs and Licensing, the Committee on Access & Equity and Student Services, the Committee on Finance and Facilities, the Public Agenda Special Ad Hoc Subcommittee, and the Board of Trustees Code of Conduct Special Ad Hoc Subcommittee.

AGENCY NAME:	Commission on Higher Education		
AGENCY CODE:	H030	SECTION:	11

Organization of Commission



*The agency serves as the fiscal agent for PASCAL.

Functions of Academic Affairs Division

Academic Program Review. The CHE fulfills its statutory responsibility of academic program approval through regularly scheduled cycles each year for considering proposals. In FY 2016-17, 46 new academic degree programs were approved, well-aligned with state workforce needs as most of the programs approved were in the areas of business/management; education; engineering and engineering technologies; computer science and IT; and health professions and related programs. Furthermore, in FY 2016-17, institutions modified 22 academic degree programs by changing curricula, concentrations or sites. Institutions terminated 83 programs, concentrations, or sites. In 2016-17, the Commission approved mission statement revisions for nine institutions.

Program Productivity. The CHE ensures that academic programs offered by public colleges and universities are effective, relevant to the economy and do not unnecessarily duplicate program offerings. This is achieved—in part— through the Commission’s regular program productivity review. The evaluation and subsequent outcomes are reported via the Biennial Review of Program Productivity. During the 2008-2012 review, there were 742 programs eligible for review using the program productivity policy standards. Of those 769 programs, 23 programs (2.9%) were found to be noncompliant and a process to increase enrollment or program termination was commenced. Six institutions had 100% compliance for all programs.

Licensing. The CHE is the sole authority for licensing nonpublic postsecondary institutions operating or soliciting in South Carolina based in-state, out-of-state, or for recruitment only. Licenses are both site- and program-specific. CHE licenses both degree- and non-degree-granting institutions, which may be for-profit, non-

AGENCY NAME:	Commission on Higher Education		
AGENCY CODE:	H030	SECTION:	11

profit, or out-of-state public institutions. In FY 2017, CHE licensed 103 institutions operating 224 locations. In Fall 2016, 12,192 students were enrolled in licensed institutions. CHE serves a consumer protection role for students enrolled at licensed institutions and responded to 21 complaints filed against licensed and exempt institutions. Lastly, CHE serves as a repository for student records from institutions that have closed and responded to 84 requests for student transcripts.

Transfer and Articulation: South Carolina Transfer and Articulation Center (SC TRAC). The CHE developed SC TRAC to enable students to locate information related to transfer and access transfer agreements. SC TRAC helps students save both time and money by facilitating the transfer of courses between institutions and by helping students better plan their degree completion progress. In FY 2016-17, the SC TRAC website had a total of 106,797 visitors and 437,995 new courses equivalencies were added by South Carolina public colleges and universities. Since the site’s launch in April 2010, there has been a 593% increase in course equivalencies between the institutions (555,260 at launch compared to 3,849,209 at the end of FY 2016-17). Furthermore, in FY 2016-17, 5,202 students used the recently implemented Transfer Check feature to determine transferability toward specific degree program requirements at public four-year institutions.

State Authorization Reciprocity Agreement (SARA). The CHE is the portal agency for SARA activities in South Carolina. SARA is a voluntary, interstate reciprocity agreement that establishes comparable standards for interstate offering of postsecondary distance education. Its member states and U.S. territories recognize each other member’s participating institutions as eligible to enroll students in distance education programs. During FY 2017, 32 South Carolina institutions joined SARA, including 13 from the Comprehensive and Research sectors, eight from the Technical College System, and 10 from the Independent sector. The total number of out-of-state students who enrolled in South Carolina institutions via distance education was 1,752. From January 1, 2014 – June 1, 2015, the three research institutions reported spending \$515,339 on state authorization activities; these costs were significantly reduced due to SARA, resulting in a substantial savings for all participating institutions.

SmartState. The SmartState Program (Program) is an unprecedented collaboration between industry, academia, and government. As required by statute, operational support, staff, and approval of all necessary funds for the operation of the SmartState Program Review Board is provided by the CHE. The Program has awarded \$197.6M to the three research universities to establish 51 Research Centers of Economic Excellence to create endowed professorships and facilitate establishment of research centers in areas that will eventually lead to enhanced economic opportunities for South Carolinians. In 15 years, the program has had a \$2.4B total economic impact on the state and created more than \$669M in labor income for South Carolinians that may not have existed otherwise. As of 2016, the SmartState Program has attracted more than \$1.5B in non-state investment and led to the creation of more than 12,400 jobs with salaries averaging \$70K a year.

Southern Regional Education Board Programs (SREB). Academic Common Market (ACM) and the Regional Contract Program are two Southern Regional Education Board (SREB) initiatives that provide access to academic programs through discounted tuition to students residing in a participating member state. Since 1949, South Carolina’s membership has provided tuition-savings for residents in health professions, including optometry and veterinary medicine. Based on the most recent data available, 128 South Carolina students have been enrolled in the regional contract programs with savings of approximately \$2,089,389. During the 2015-2016 academic year, South Carolina students were enrolled in the ACM programs with savings of \$2,242,301. Academic Affairs staff serve as SREB state coordinators, trained to help determine student residency, program eligibility, and to provide guidance and services to in-state and out-of-state residents.

Service Learning Award. The Service Learning Award is part of the CHE’s on-going initiative to publicize statewide the service learning efforts of our colleges and universities and their students. In 2016-17, the

AGENCY NAME:	Commission on Higher Education		
AGENCY CODE:	H030	SECTION:	11

Commission received 13 nominations for the award and selected one award winner: *Camp Catch Your Breath of the Midlands* nominated by Midlands Technical College.

Educator Preparation. The CHE works with the S.C. Department of Education to approve programs related to the preparation of teachers and other school professionals as well as on national initiatives through the Council of Chief State School Officers. The CHE oversees centers for educator recruitment, retention, advancement and professional development (including CERRA, Centers of Excellence and ITQ). The CHE also partners with the State Higher Education Executive Officers (SHEEO) organization and private institutions to increase the number of African-American males pursuing education degrees.

Centers of Excellence. This is a competitive grants program conducted through CHE. Grantees establish a state-of-the art resource center in a specific area related to the improvement of teacher education. Through a five-year grant, Centers concentrate on assisting low-performing schools and districts by providing training and support to teachers in those schools and districts. Since the first Center of Excellence was funded in 1987, over 25 individual Centers have been funded across South Carolina. Eleven (11) Centers of Excellence remain active today.

Improving Teacher Quality (ITQ). CHE has been responsible for administering federal funds under a Title II program of The Elementary and Secondary Education Act. In 2001, the federal legislation was re-authorized under the No Child Left Behind Act (NCLB). The NCLB authorizes CHE to conduct a competitive awards program to provide support to increase student academic achievement through 18-month grants that are focused on: 1) improving teacher and principal quality; and 2) increasing the number of highly qualified teachers in the classroom and highly qualified principals and assistant principals in schools. With changes in federal programs, the final ITQ grants will close out in Fall 2018.

College and Career Readiness. The Commission’s commitment to a coordinated statewide system of economic development for South Carolina residents from PK-12 education to postsecondary education to workforce development (P-20W) is demonstrated through recent publications (since 2016) that are in process or distribution from state and national engagement include the following: (1) the S.C. Department of Education’s *Educator Preparation Guidelines*; (2) the S.C. Department of Employment and Workforce’s (SCDEW) *South Carolina Workforce Gap Analysis*; (3) the joint CHE-SCDEW State Workforce Development Board study on employment and wages, (4) S.C. Technical College ACT score thresholds for transfer-level coursework (i.e., non-developmental/remedial) without additional testing; and (5) the S.C. Department of Commerce governance bill draft for a Longitudinal Data System.

Functions of Student Services Division

With over 106,000 students participating in the state scholarship and grant programs during the 2016-17 academic year, it is extremely important to provide up-to-date information to the constituents of the state. For FY 2016-17, staff held over 30 workshops, received over 5000+ phone calls, and thousands of emails regarding state scholarships, grants, residency, and college access programs.

Palmetto Fellows Scholarship (PF). The PF is the highest monetary scholarship awarded in the merit-based programs. Staff creates and disseminates the PF application, and receives student applications to determine academic eligibility. For FY 2016-17, CHE staff reviewed 3,587 applications for PF eligibility, while 7,496 students participated in the program. Staff maintains all data, manages transfer requests, monitors students continued eligibility status, and updates the statewide database. Additionally, staff promulgates

AGENCY NAME:	Commission on Higher Education		
AGENCY CODE:	H030	SECTION:	11

regulations and works with S.C. General Assembly to draft legislation on this scholarship program as well as the other scholarship programs.

LIFE and HOPE Scholarships. These are merit-based scholarships to residents attending eligible two- and four-year institutions in South Carolina. Staff hosts annual trainings each year with institutional financial aid officers from around the state to ensure the program is implemented accurately at each institution. Staff works with school counseling personnel to train them on the scholarship requirements, and assists students, families and institutions with the eligibility questions or concerns. For the 2016-17 academic year, South Carolina institutions awarded \$102,284,845 in LIFE Scholarship funding to 38,106 eligible recipients, and awarded \$5,280,204 in HOPE Scholarship funding to 3,776 eligible recipients.

Lottery Tuition Assistance Program (LTAP). These funds are awarded to eligible students at two-year institutions. Staff works with the eligible institutions and students to ensure scholarship requirements are understood. For the 2016-17 academic year, South Carolina institutions awarded \$23,966,401 in LTAP funding to 29,325 eligible recipients. The LTAP also supports many high school students attempting college-level coursework through Dual Enrollment programs across the state.

Appeals. Students may file an appeal with CHE due to an extenuating circumstance to retain or regain the scholarship. Staff reviews documentation, calculates the student GPA and prepares a file for each submitted appeal. If there is a second appeal, staff prepares a formal case file for each individual student, provides training for appeal committee members, and presents the case file for review. For the 2016-17 academic year, CHE dispensed with 216 PF, LIFE and HOPE Scholarship appeals.

Need-Based Grant (NBG). The South Carolina NGB program provides funding for the state’s neediest students. These funds are available for students attending eligible two- and four-year institutions in South Carolina. The award amount is up to \$2,500 per academic year, and is awarded based on the results of the Free Application for Federal Student Aid (FAFSA). Through a formulated calculation, CHE staff determines the award amount that each institution receives each year. The funding is awarded on a first come, first serve basis, based on the submission date of the completed FAFSA by the student. Students participating in eligible College Transition Programs (CTP), as well as eligible Foster Care Youth are able to receive additional South Carolina NBG funding. CHE Staff is responsible for working closely with the five CTPs, the S.C. Department of Social Services and higher education institutions to ensure appropriate awarding. For FY 2016-17, 27,411 students participated in the South Carolina NBG program.

National Guard College Assistance Program (CAP). The CAP provides financial assistance for eligible Air Guard members and Army Guard members. Staff, in coordination with the South Carolina National Guard and college or university representatives, maintains the CAP database to confirm and verify eligibility for CAP awards, assists in processing invoices from colleges and universities, reviews each recipient for eligibility upon receipt of CAP invoices, and provides regulatory guidance regarding the program. For the 2016-17 academic year, 695 Air and Army Guard members were awarded approximately \$2.2 million dollars.

College Goal South Carolina (College Goal). College Goal provides an opportunity for students and guardians to receive free financial aid assistance while completing and submitting the Free Application for Federal Student Aid (FAFSA). Staff updates and administers the registration process for College Goal South Carolina events, through the SCCANGO.org website, designs promotional materials, recruits institutions as sites for College Goal, hosts meetings to provide training to institutions seeking to host, and develops manuals for students and families to use as guides through the financial aid process. The number of completed FAFSAs in

AGENCY NAME:	Commission on Higher Education		
AGENCY CODE:	H030	SECTION:	11

South Carolina during the 2017 cycle was 28,812, which represented a 10% increase from the 26,158 submitted in previous year. In 2017, College Goal events were hosted in 46 sites throughout South Carolina.

College Application Month South Carolina (CAM). The goal of CAM is to provide a forum for all South Carolina seniors to complete and file college applications. Staff perform similar activities as the College Goal program but with the focus on college applications instead of the FAFSA. In 2016, 223 high schools held College Application Month programs and 22,052 students received assistance completing over 37,656 applications to colleges throughout the state of South Carolina.

College Decision Day South Carolina. College Decision Day is a program that celebrates the college decision of a graduation high school senior. Staff recruits and provides support to high schools each year to host College Decision Day South Carolina events across South Carolina. From March to May 2017, 103 high schools hosted Decision Day programs in South Carolina.

Gaining Early Awareness and Readiness for Undergraduate Programs (GEAR UP). This federal discretionary program provides over \$22 million to the state of South Carolina over a 7-year period and serves over 3,000 students within 22 middle schools and high schools along the I-95 corridor. Staff ensures the annual award of \$3.49 million is used appropriately by managing up to 40 GEAR UP personnel housed across the state, and by ensuring college and career readiness services are being provided to students at each school. In comparison to the class of 2015-2016, the GEAR UP students saw an increase of 14% in their graduation rate. A total of 1,676 GEAR UP students completed the FAFSA, which is a 20% higher FAFSA completion rate than the class of 2015-2016. A minimum of 22 college application and college goal events occurred in each GEAR UP school.

State Approving Agency (SAA). For this federal contract, staff is responsible for approving and supervising education for GI Bill participants to include licensing and certification tests and training programs at colleges, universities, schools and training establishments in the state. As of April, 2017, the estimated number of veterans/dependents receiving GI Bill benefits at educational institutions in South Carolina is 11,758. Staff also conducts U.S. Department of Veterans Affairs (VA) Compliance Surveys to ensure both State and Federal criteria are met in accordance with the VA GI Bill program.

Functions of Fiscal Affairs Division

Agency Operations. The division is responsible for CHE’s financial and operational resources, which is currently approximately \$5 million for agency operations, with an additional \$355 million in pass through funds. This responsibility includes allocating and distributing various funds appropriated for higher education. Tasks include accounts payable and receivable, budget management, auditing lottery scholarship expenditures by institutions, human resources, grant management for two grants, and all other activities to ensure compliance with federal and state laws. Over 1,900 invoices, from a combination of direct costs but primarily in pass through funds to institutions and colleges, were reviewed and processed during the year, which totaled over \$345 million. Formal policies and procedures for internal processes were developed in FY 2016-17 to reduce risk and ensure adherence to established processes and best practices.

Data – CHEMIS. Data and accountability systems are hosted and maintained by CHE to ensure data is available to the public, policymakers and institutions. CHE facilitates institutional data submission as required by the U.S. Department of Education for purposes of the Federal Integrated Postsecondary Education Data System (IPEDS). In addition, data is provided for the SREB Data Exchange, Education Oversight Committee (EOC) reports,

AGENCY NAME:	Commission on Higher Education		
AGENCY CODE:	H030	SECTION:	11

and ad hoc reporting. The data is used for research, responding to inquiries, and program administration requirements of the State, institutions, and agency.

Information Technology. CHE maintains the security of information and privacy for data that is housed at our agency and is focused on ensuring adherence to the Family Educational Rights and Privacy Act (FERPA). Encryption and other forms of security have been adopted to minimize state risk. The entire CHE staff has completed Cyber Security Awareness training modules, InfoSec training and executed data usage agreements. The agency recently transitioned to the VoIP system for phones for cost savings and to ensure compliance of state law. Currently, the CHE is migrating all over its servers to the Division of Technology Operations of the Department of Administration. The Migration project will reduce the amount of exposure to physical "risk" associated with its data systems.

Capital Projects. CHE is statutorily tasked with providing an approval recommendation and comments on public higher education capital projects, leases and land purchases. A recommendation is forwarded to the JBRC and SFAA. Over 79 projects and 8 leases were reviewed and vetted in FY 2016-17. In addition, 86 permanent improvement projects were closed out. Staff reviews the A1 in comparison to the Statewide Permanent Improvement Reporting System (SPIRS) to ensure the expenditures are properly captured before closing the project out.

Financial Matrix. The financial matrix was introduced in December 2016. The matrix provides various indicators of an institution such as revenue, expenditures, and enrollment among other items. Institutions provide the matrix and CHE staff analyzes the information for use in evaluating the financial health and sustainability of institutions.

Comprehensive Permanent Improvement Plan (CPIP). The CPIP includes all of an institution's permanent improvement projects anticipated or proposed over the next five years. CHE is charged with prioritizing projects on the CPIP, and Year One projects are approved annually. For the FY 2016-17 CPIP, 13 projects in Year One were approved and 271 projects for Year One through Year Five were compiled.

Scholarships Compliance. Proviso 3.1 requires verification and audit by CHE for the expenditure of lottery funds. In FY 2017, a total of 14 compliance reviews were initiated that resulted in various recommendations, from improving procedures and records retention to return of funds for ineligible awards made.

Lottery Administration. Lottery funds are managed and distributed by CHE to each institution and college. These funds include the state's need-based grants, merit scholarship programs, and other types of student financial assistance. These disbursements totaled over \$311 million in FY 2016-17. Reconciliation and tracking of funds by institution level is maintained, and cash flow is optimized to ensure the timely receipt of lottery funds to the institutions. Through formulated calculations, the annual funding amount given to each institution is determined for the Need-Based Grants program. The lottery budget is continuously analyzed and forecasted to ensure adequate appropriations are allocated and available to the open-ended merit programs.

Higher Education Excellence Enhancement Program (HEEEP). One of the goals of HEEEP is to enhance excellence in higher education for low-income and educationally disadvantaged students. Funds are received from the lottery, and the eligibility of each institution is determined through a review PELL grant recipients and gender composition percentages of enrolled students. A contract is entered into and activity is monitored by CHE to ensure compliance of the contract.

AGENCY NAME:	Commission on Higher Education		
AGENCY CODE:	H030	SECTION:	11

Reports. Published reports are completed annually to share data on higher education in SC. These reports include the Higher Education Statistical Abstract, Tuition and Fee Schedules, Grapevine survey, and reporting packages. These reports include statistics on enrollment, degrees awarded, faculty, tuition and fees, funding, and other factual data.

Risk Assessment and Mitigation Strategies

In 2015, the CHE performed a SWOT analysis and identified 164 unique statutory directives. Of these, 105 were assessed as “Green” – those where our existing resources allowed us to fully address the directive, 25 were assessed as “Yellow” – those where our existing resources allowed us to partially fulfill the directive, and 36 were assessed as “Red” – those where our existing resources did not permit us to address the directive or where the directive was no longer valid. Of the directives identified as not being fully met or not addressed at all or no longer valid, we identified 21 that could be deleted and 26 that could be amended (clarified). The remaining 14 were determined to be valid as written but could not be resourced within our existing budget.

Potential Negative Impacts. If the agency fails in accomplishing its goals and objectives, then the following potential negative impacts could arise:

- **Tuition Costs that are not Affordable.** By some measures South Carolinians ranks first in tuition and fees at public colleges as a percentage of family income. Students are often unable to afford a four-year degree without taking on a high debt burden, which will potentially impact them for decades into the future. Compiling and analyzing comprehensive tuition comparisons across institutions provides transparency on tuition costs that allows active decisions for both the policymakers and students.
- **Capital Projects that do not fit in the Statewide Capital Improvement Plan**
- **Lack of Stability in the Higher Education System.** Financial stability of the system could be at risk if there is not a comprehensive review and monitoring of the factors affecting the financial health of institutions.
- **Inefficiencies in the Higher Education System.** Inefficiencies that manifest in duplication of academic programs.
- **Lack of Coordination of Postsecondary Efforts in Workforce Development that align with Needs of the Economy.** Adequate review and productivity monitoring of academic programs is necessary to ensure programs are producing and performing according to the purpose of the programs and providing a workforce that is capable in succeeding in the global job market. Ultimately, this will lead to a workforce that is not qualified to meet the needs of the economy.
- **Financial Risks in Scholarship Program.** Over \$360M in lottery and scholarship funding is available for colleges and universities annually. Adequate monitoring and audit of these programs will ensure all appropriated funds are disbursed according state laws and regulations and that there is not fraud in these programs that puts the State in financial risk.

Support from the General Assembly in providing and maintaining sufficient financial resources to fulfill all statutory requirements will ensure negative impacts are minimized. Legislative and financial support in the areas of academic program review and productivity, financial monitoring, and scholarship auditing are critical to reducing any risk to the higher education system in South Carolina.

CHE provided a myriad of restructuring recommendations related to deletion or modification of existing statutes and provisos needed to provide clarity, best practices, and sustainability. These recommendations were summarized by legislative counsel to provide specifics needed to populate H.4833. The recommendations can be accessed [here](#).

Agency Name: Commission on Higher Education

Fiscal Year 2017-2018
Accountability Report

Agency Code: H030 Section: 11

Strategic Planning Template

Type	Goal	Item # Strat	Object	Associated Enterprise Objective	Description
G	1			Education, Training, and Human Development	Promote Quality and Excellence of South Carolina's Higher Education System
S		1.1			Improve Monitoring and Assessment of Academic Programs and Student Services at SC Public Colleges and Universities
O			1.1.1		Establish and operationalize performance metrics and outcome measures for assessment of academic programs previously approved by CHE
O			1.1.2		Redirect CHE staffing and resources to focus on performance metrics of academic programs approved in past five years
O			1.1.3		Increasing data security, mitigating risk and ensuring the proper disaster recovery plans are in place by migrating SCCHE network including support and hardware to the Division of Technology Operations (DTO) under the Department of Administration
O			1.1.4		Continue periodic institutional audits of state scholarship and student aid programs funded through CHE and communicate best practices to institutions
S		1.2			Strengthen Monitoring and Assessment of Non-Public Postsecondary Institutions Operating in SC
O			1.2.1		Establish and operationalize performance metrics and outcome measures for assessment of programs at non-public institutions
O			1.2.2		Redirect CHE staffing and resources to focus on performance metrics of programs at non-public institutions approved in past five years
O			1.2.3		Expand audits of non-public postsecondary institutions to ensure compliance with Department of Veterans Affairs' requirements for quality instruction and effective, efficient and ethical administration of educational and training programs for enrolled veterans/covered individuals
G	2			Education, Training, and Human Development	Improve Affordability and Accessibility of South Carolina Higher Education Programs and Services
S		2.1			Strengthen Existing and/or Develop New Funding Models to Sustain Public Higher Education

Agency Name: Commission on Higher Education

Fiscal Year 2017-2018
Accountability Report

Agency Code: H030 Section: 11

Strategic Planning Template

Type	Goal	Item # Strat	Object	Associated Enterprise Objective	Description
O			2.1.1		Engage the Council of Presidents and the Chairs of Boards of Trustees in seeking systemic approaches to higher education cost savings and economies
O			2.1.2		Seek executive, legislative, and institutional support for adherence to statutory requirements of §59-103-35
O			2.1.3		Provide for the efficient and effective management of student financial aid and other programs under the purview of CHE that promote affordability and accessibility
O			2.1.4		Initiate a study of SC's higher education resources with recommendations to identify their most efficient and effective deployment in support of state needs and state economy
O			2.1.5		Revise statutory sector definitions for SC's public colleges and universities
G	3			Education, Training, and Human Development	Foster Collaboration to Strengthen Higher Education's Value to the State's Economic Growth and Human Development
S		3.1			Improve Collaboration among All Tiers of the State's Education Enterprise from Pre-K through College/Career
O			3.1.1		Work through the Council of P-20 Agency Heads to coordinate key workforce and career development objectives of participating agencies
O			3.1.2		Continue to strengthen communications between CHE and the Technical College System at board, executive, and staff levels
O			3.1.3		Continue to strengthen communications between CHE and SDE/SBE at board, executive, and staff levels
O			3.1.4		Work with SDE and EOC to align and implement new K-12 college readiness standards with institutional admissions and math/English placement standards
O			3.1.5		Continue to work with and strengthen communication between CHE and other partner agencies and organizations such as the EOC, DEW, Department of Commerce, Chamber of Commerce, and the Technical College System Board to integrate workforce needs assessment into long-term statewide planning

Agency Name: Commission on Higher Education

Fiscal Year 2016-2017
Accountability Report

Agency Code: H030 Section: 011

Performance Measurement Template

Item	Performance Measure	Last Value	Current Target Value	Current Value	Future Target Value	Time Applicable	Data Source and Availability	Calculation Method	Associated Objective(s)	Meaningful Use of Measure
Scholarship and Grant Programs										
1	Palmetto Fellows (PF), # Student Awards	7,357	7,654	7,654	8,037	Annual, Academic Year	CHE Annual Disbursement Report, CHEMIS Data	Data collected each semester during academic year	1.1.4, 2.1.3	Performance Measure will assist staff with monitoring expenditures and future funding of state sponsored financial aid programs.
2	LIFE, # Student Awards	38,616	40,125	40,125	42,131	Annual, Academic Year	See PF Awards above	See PF Awards above	1.1.4, 2.1.3	Performance Measure will assist staff with monitoring expenditures and future funding of state sponsored financial aid programs.
3	HOPE, # Student Awards	3,666	3,953	3,953	4,151	Annual, Academic Year	See PF Awards above	See PF Awards above	1.1.4, 2.1.3	Performance Measure will assist staff with monitoring expenditures and future funding of state sponsored financial aid programs.
4	Need-Based Grants, # Student Awards	29,964	29,178	29,178	33,238	Annual, Academic Year	See PF Awards above	See PF Awards above	1.1.4, 2.1.3	Performance Measure will assist staff with monitoring expenditures and future funding of state sponsored financial aid programs.
5	Lottery Tuition Assistance, # Student Awards	41,528	36,381	36,381	38,955	Annual, Academic Year	See PF Awards above	See PF Awards above	1.1.4, 2.1.3	Performance Measure will assist staff with monitoring expenditures and future funding of state sponsored financial aid programs.
6	National Guard College Assistance Program, # Student Awards	854	710	710	917	Annual, Academic Year	CHEMIS program data collection	Data collected each semester during academic year	1.1.4, 2.1.3	Performance Measure will assist CHE staff and the SCNG in evaluating the program to ensure that all eligible service members have the opportunity to use the College Assistance Program (CAP).
7	# of Events in which staff participated to provide scholarship and grant programs updates to students, parents, and guidance counselors and to increase awareness	21	21	25	30	Fiscal Year	CHE Program Data, Staff Report	Tracked throughout the year	2.1.3	Performance measure allows staff to gauge how well it is maintaining its responsibility to inform constituents of scholarships, grants and college access programs, and allow staff to monitor travel expenditures.
8	Workshops hosted for financial aid representatives to review regulations and program changes to ensure proper administration	7	7	7	15	Fiscal Year	CHE Program Data, Staff Report	Tracked throughout the year	2.1.3	Performance measure allows staff to gauge how well it is maintaining its responsibility to meet with and train institutions on scholarships, grants and college access programs, and allow staff to monitor travel expenditures.
9	Number of student scholarship/grant appeals processed for which decisions were rendered	176	176	192	192	Fiscal Year	CHE Program Data, Staff Report	Tracked throughout the year	2.1.3	Performance measure assists staff with monitoring student performance in the state sponsored scholarship programs.
Students participating in SREB programs										
10	SREB Contract Programs for Veterinary Medicine and Optometry (new and continuing)	121	128	118	128	Academic Year	CHE participant information	Annual review, data collected as enrolled	2.1.3	This program allows South Carolina residents to pursue degrees in optometry and veterinary medicine, while paying in-state tuition in other states because these programs are not offered at SC institutions.

11	SREB Academic Common Market Participation	128	124	124	124	Calendar Year	Annually. CHE program report	Annual review, data collected as enrolled	2.1.3	Providing greater support of the goal of affordability through providing in-state tuition cost-savings to SC residents who study out-of-state.
12	Doctoral Scholar Participants (new and continuing)	12	7	7	7	Academic Year	CHE participant information	Annual review, data collected as enrolled	2.1.3	Future performance measure allows staff to monitor the SREB contractual amount and number of SREB doctoral scholars in the state per year.
<i>Institutional Program Licensing Activity</i>										
13	Licensing - Agent Permits	246	N/A	208	N/A	Fiscal Year	CHE Program Data, Staff Report	Tracked throughout the year	1.2.1	Agents for licensed schools are permitted by the CHE in order to prevent fraudulent recruitment practices.
14	Licensing - Transcripts Requested	101	N/A	83	N/A	Fiscal Year	CHE Program Data, Staff Report	Tracked throughout the year	1.2.1	The CHE provides closed school transcripts to students for transfer and employment verification purposes.
15	Licensing - New Degree Granting Licenses, Initial	1	N/A	2	N/A	Fiscal Year	CHE Program Data, Staff Report	Tracked throughout the year	1.2.1, 1.2.2	The CHE is the sole authority for licensing nonpublic postsecondary institutions operating or soliciting in SC. Licensure is a consumer protection function.
16	Licensing - Degree Granting Licenses, Amendments to Existing Licenses	1	N/A	1	N/A	Fiscal Year	CHE Program Data, Staff Report	Tracked throughout the year	1.2.1, 1.2.2	The CHE is the sole authority for licensing nonpublic postsecondary institutions operating or soliciting in SC. Licensure is a consumer protection function.
17	Licensing - Initial Non-degree licenses	7	N/A	5	N/A	Fiscal Year	CHE Program Data, Staff Report	Tracked throughout the year	1.2.1, 1.2.2	The CHE is the sole authority for licensing nonpublic postsecondary institutions operating or soliciting in SC. Licensure is a consumer protection function.
18	Licensing - Total Licenses Issued	211	N/A	258	N/A	Fiscal Year	CHE Program Data, Staff Report	Tracked throughout the year	1.2.1, 1.2.2	The CHE is the sole authority for licensing nonpublic postsecondary institutions operating or soliciting in SC. Licensure is a consumer protection function.
19	Licensing - Licenses Relinquished, Deferred, Denied, or Revoked	15	N/A	8	N/A	Fiscal Year	CHE Program Data, Staff Report	Tracked throughout the year	1.2.1, 1.2.2	The CHE has authority to seize and maintain student academic records from licensed institutions that close. The CHE also requires licensed institutions maintain a bond to provide refunds or teach-out resources to student affected by closures.
20	Licensing - Student Complaints	45	N/A	21	N/A	Fiscal Year	CHE Program Data, Staff Report	Tracked throughout the year	1.2.1, 1.2.2	The CHE has authority to accept complaints from students of both licensed and exempt institutions.
21	SARA- Institutions Approved to Participate	N/A	N/A	29	N/A	Fiscal Year	CHE Program Data, Staff Report	Tracked throughout the year	2.1.3	SARA is intended to make it easier for accredited SC institutions to enroll out-of-state students in distance education.
<i>Veterans Education and Training Programs</i>										
22	SAA - Number of program approvals for degree, diploma, and certificate programs at each school approved for veterans benefits	3,519	1269	1269	1307	Federal Fiscal Year (Oct 1-Sept 30, FY15 & FY16)	CHE Program Data, Staff Report	Tracked throughout the year	1.2.3, 2.1.3	This approval action is in accordance with the Department of Veterans Affairs and the State Approving Agency Contractual and Business Plan agreements for the FFY. This report is also to ensure that the targeted measurements and goals are being met by the SAA.

23	SAA - OJT Apprenticeships and Training: Number of Business Organizations across SC involved	68	64	64	66	Federal Fiscal Year (Oct 1-Sept 30, FY15 & FY16)	CHE Program Data, Staff Report	Tracked throughout the year	1.2.3, 2.1.3	This approval action is in accordance with the Department of Veterans Affairs and the State Approving Agency Contractural and Business Plan agreements for the FFY. This report is also to ensure that the targeted measurements and goals are being met by the SAA.
24	SAA - OJT Apprenticeships and Training: Number of Veterans enrolled in career and training programs	195	181	181	186	Federal Fiscal Year (Oct 1-Sept 30, FY15 & FY16)	CHE Program Data, Staff Report	Tracked throughout the year	1.2.3, 2.1.3	This approval action is in accordance with the Department of Veterans Affairs and the State Approving Agency Contractural and Business Plan agreements for the FFY. This report is also to ensure that the targeted measurements and goals are being met by the SAA.
25	SAA - OJT Apprenticeships and Training: Number of Approved Career Training Objectives (i.e., types of available jobs)	204	222	222	229	Federal Fiscal Year (Oct 1-Sept 30, FY15 & FY16)	CHE Program Data, Staff Report	Tracked throughout the year	1.2.3, 2.1.3	This approval action is in accordance with the Department of Veterans Affairs and the State Approving Agency Contractural and Business Plan agreements for the FFY. This report is also to ensure that the targeted measurements and goals are being met by the SAA.
26	SAA - OJT Apprenticeships and Training: Number of the types of career training objectives in which veterans participated.	36	27	27	28	Federal Fiscal Year (Oct 1-Sept 30, FY15 & FY16)	CHE Program Data, Staff Report	Tracked throughout the year	1.2.3, 2.1.3	This approval action is in accordance with the Department of Veterans Affairs and the State Approving Agency Contractural and Business Plan agreements for the FFY. This report is also to ensure that the targeted measurements and goals are being met by the SAA.
<i>CHE Academic Program Approval</i>										
27	Academic Program Approval & Review - New Proposals Reviewed	26	26	46	46	Fiscal Year	CHE Program Data, Staff Report	Tracked throughout the year	1.1.1	Determine whether public institutions are meeting the state's needs (both workforce and reasearch) and assure effective and efficient use of resources so institutions offer students quality, accessible, and affordable programs.
28	Academic Program Approval & Review - Existing Programs Terminated by Institutions	50	50	83	83	Fiscal Year	CHE Program Data, Staff Report	Tracked throughout the year	1.1.1, 1.1.2	Determine whether public institutions are meeting the state's needs (both workforce and reasearch) and assure effective and efficient use of resources by evaluating and refining program offerings.
29	Academic Program Approval & Review - Program Modifications Reviewed	108	108	22	22	Fiscal Year	CHE Program Data, Staff Report	Tracked throughout the year	1.1.1, 1.1.2	Determine whether public institutions are meeting the state's needs (both workforce and reasearch) and assure effective and efficient use of resources by evaluating and refining program offerings.
30	Mission statements reviewed	2	2	9	9	Fiscal Year	CHE Program Data, Staff Report	Tracked throughout the year	2.1.5, 1.1.1	Ensure the institution's mission is within the overall mission of that particular type of institution as stipulated by Section 59-103-15 and is within the overall mission of the State.
31	Academic Program Approval & Review - Number of Notification Changes	70	70	86	86	Fiscal Year	CHE Program Data, Staff Report	Tracked throughout the year	1.1.1, 1.1.2	Determine whether public institutions are meeting the state's needs (both workforce and reasearch) and assure effective and efficient use of resources by evaluating and refining program offerings.

CHE Capital Project Approval

32	Capital Projects Reviewed, # of Projects	143	100	159	100	Fiscal Year	CHE Program Data, Staff Report	Tracked throughout the year	2.1.3	Track the project status and monitor resources used/spent in maintaining and/or constructing state assets.
33	Leases Reviewed, # of Leases	9	9	7	7	Fiscal Year	CHE Program Data, Staff Report	Tracked throughout the year	2.1.3	Track higher education space needs not provided with state capital assets.

CHE Operations

34	Invoices and Payments Processed	1,854	1,895	1,936	1,900	Fiscal Year	SCEIS Payment Register	Tracked throughout the year	2.1.3	Processing of payments, particularly for scholarships and flow through funds, ensures funds are provided to institutions to maintain affordability and access for students.
----	---------------------------------	-------	-------	-------	-------	-------------	------------------------	-----------------------------	-------	---

CHE Competitive Grant Programs for Public Institutions

35	Improving Teacher Quality Awards	4	4	4	0	Fiscal Year	CHE Program Data, Staff Report	Tracked throughout the year	2.1.1, 3.1.1	Monitor continued interest and need for ITQ grants and programs.
36	Improving Teacher Quality Submissions	6	6	6	0	Fiscal Year	CHE Program Data, Staff Report	Tracked throughout the year	2.1.1, 3.1.1	Monitor continued interest and need for ITQ grants and programs.
37	EIA-Centers of Excellence Awards	5	1	1	1	Fiscal Year	CHE Program Data, Staff Report.	Tracked throughout the year	2.1.1, 3.1.1	Monitor continued interest and need for Centers of Excellence grants and programs.
38	EIA-Centers of Excellence Submissions (New Proposals & Continuing Requests)	7	5	5	5	Fiscal Year	CHE Program Data, Staff Report	Tracked throughout the year	2.1.1, 3.1.1	Monitor continued interest and need for Centers of Excellence grants and programs.
39	Service Learning Awards	3	3	1	1	Fiscal Year	CHE Program Data, Staff Report	Tracked throughout the year	2.1.1, 3.1.1	Publicize statewide the service learning efforts of our colleges and universities and their students.
40	Service Learning Submissions	14	14	13	13	Fiscal Year	CHE Program Data, Staff Report	Tracked throughout the year	2.1.1, 3.1.1	Publicize statewide the service learning efforts of our colleges and universities and their students.

SmartState Program

41	SmartState Centers Awarded	51	51	51	51	Year-end as of June 30	CHE Program Data	Last approved Centers in 2013	2.1.1, 3.1.1	100% of funds must be matched to fulfill the mission of maximizing research and innovation that promotes economic and workforce development statewide.
42	Percent of Funds Matched & Drawn	100.0%	100.0%	100.0%	100.0%	Year-end as of June 30	CHE Program Data	Tracked throughout the year	2.1.1, 3.1.1	100% funds have been matched and drawn to fulfill the mission of maximizing research and innovation that promotes economic and workforce development statewide.
43	Percent of Non-state Match Funds Pledged	100%	100%	100%	100%	Year-end as of June 30	CHE Program Data	Tracked throughout the year	2.1.1, 3.1.1	100% of funds must be matched to fulfill the mission of maximizing research and innovation that promotes economic and workforce development statewide.
44	Endowed Chairs Created for Funded Centers	85	85	85	85	Year-end as of June 30	CHE Program Data	Tracked throughout the year	2.1.1, 3.1.1	100% of funds pledged have been matched to fulfill the mission of maximizing research and innovation that promotes economic and workforce development statewide.
45	Endowed Chairs Appointed	66	85	68	85	Year-end as of June 30	CHE Program Data	Tracked throughout the year	2.1.1, 3.1.1	The number of chairs appointed has steadily increased to expand the research and innovation that promotes economic and workforce development statewide.
46	Percent of Chairs Appointed	78%	100%	80%	100%	Year-end as of June 30	CHE Program Data	Tracked throughout the year	2.1.1, 3.1.1	The number of chairs appointed has steadily increased to expand the research and innovation that promotes economic and workforce development statewide.

College Access and Awareness Programs

47	College Goal Sunday - Participating families	923	925	693	950	Fiscal Year	CHE Program Data, Staff Report	Tracked throughout the year	2.1.3	Performance measure allows CHE staff to track number of families participating in the College Goal Program each year.
48	College Goal Sunday - FAFSAs completed	251	260	143	300	Fiscal Year	CHE Program Data, Staff Report	Tracked throughout the year	2.1.3	Performance measure allows CHE staff to track number of FAFSAs completed through the College Goal Program each year.
49	Statewide - FAFSAs completed	26,158	26,000	28,812	30,000	Fiscal Year	CHE Program Data, Staff Report	Tracked throughout the year	2.1.3	Performance measure allows CHE staff to track the number of FAFSAs completed in the state each year.
50	College Goal Sunday - Participating volunteers	362	300	218	300	Fiscal Year	CHE Program Data, Staff Report	Tracked throughout the year	2.1.3	Performance measure allows CHE staff to track number of volunteers participating in the College Goal Program each year.
51	College Application Month - Participating high schools	215	220	223	230	Fiscal Year	CHE Program Data, Staff Report	Tracked throughout the year	2.1.3	Performance measure allows CHE staff to track the number of participating high schools in College Application Month each year for program improvements.
52	College Application Month - Participating students	45,828	48,000	48,298	50,000	Fiscal Year	CHE Program Data, Staff Report	Tracked throughout the year	2.1.3	Performance measure allows CHE staff to track the number of participating students in College Application Month each year for program effectiveness.
53	College Application Month - Applications completed	32,090	35,000	37,656	40,000	Fiscal Year	CHE Program Data, Staff Report	Tracked throughout the year	2.1.3	Performance measure allows CHE staff to track the number of college applications completed at College Application Month each year for program effectiveness.
54	College Decision Day - Participating High Schools	83	100	103	110	Fiscal Year	CHE Program Data, Staff Report	Tracked throughout the year	2.1.3	Performance measure allows CHE staff to track the number of participating high schools in College Decision Day events each year for program improvements.
SC GEAR UP***										
55	SC GEAR UP - Services to STUDENTS: # Receiving Tutoring and/or Academic Enrichment / Sum # Hours of Service Per Student Receiving the Service Per Year	1492/47,817	N/A	895/25,985.25	382/16,967	Annual Academic Year	CHE Program Data, Reports of GEAR UP Graduation Coaches.	Tracked throughout the year	2.1.3	Performance Measure will assist staff with monitoring services provided, use of funds and possible future funding of SC GEAR UP. Services provided are required per the GEAR UP grant.
56	SC GEAR UP - Services to STUDENTS: # Participating in Rigorous Academic Curricula / Sum # Hours of Service Per Student Receiving the Service Per Year	1121/151,335	N/A	1030/139,050	908/122,580	Annual Academic Year	CHE Program Data, Reports of GEAR UP Graduation Coaches.	Tracked throughout the year	2.1.3	Performance Measure will assist staff with monitoring services provided, use of funds and possible future funding of SC GEAR UP. Services provided are required per the GEAR UP grant.
57	SC GEAR UP - Services to STUDENTS: # Receiving Comprehensive Mentoring / Average # Hours of Service Per Student Receiving the Service Per Year	2613/55,771	N/A	2132/44,433.75	1094/17,420	Annual Academic Year	CHE Program Data, Reports of GEAR UP Graduation Coaches.	Tracked throughout the year	2.1.3	Performance Measure will assist staff with monitoring services provided, use of funds and possible future funding of SC GEAR UP. Services provided are required per the GEAR UP grant.
58	SC GEAR UP - Services to STUDENTS: # Receiving Advising and/or Academic and Career Planning / Sum # Hours of Service Per Student Receiving the Service Per Year	3084/19,242	N/A	2724/11,171	2593/18,122	Annual Academic Year	CHE Program Data, Reports of GEAR UP Graduation Coaches.	Tracked throughout the year	2.1.3	Performance Measure will assist staff with monitoring services provided, use of funds and possible future funding of SC GEAR UP. Services provided are required per the GEAR UP grant.
59	SC GEAR UP - Services to STUDENTS: # Participating in College Visits/College Student Shadowing / Sum # Hours of Service Per Student Receiving the Service Per Year	1052/8028	N/A	870/8478.5	1132/6,749	Annual Academic Year	CHE Program Data, Reports of GEAR UP Graduation Coaches.	Tracked throughout the year	2.1.3	Performance Measure will assist staff with monitoring services provided, use of funds and possible future funding of SC GEAR UP. Services provided are required per the GEAR UP grant.

60	SC GEAR UP - Services to STUDENTS: # Participating in Summer Programs / Sum # Hours of Service Per Student Receiving the Service Per Year	419/25,154	N/A	223/7820.5	0/0	Annual Academic Year	CHE Program Data, Reports of GEAR UP Graduation Coaches.	Tracked throughout the year	2.1.3	Performance Measure will assist staff with monitoring services provided, use of funds and possible future funding of SC GEAR UP. Services provided are required per the GEAR UP grant.
61	SC GEAR UP - Services to STUDENTS: # Receiving Financial Aid Counseling / Sum # Hours of Service Per Student Receiving the Service Per Year	395/629	N/A	603/828.75	1061/1732	Annual Academic Year	CHE Program Data, Reports of GEAR UP Graduation Coaches.	Tracked throughout the year	2.1.3	Performance Measure will assist staff with monitoring services provided, use of funds and possible future funding of SC GEAR UP. Services provided are required per the GEAR UP grant.
62	SC GEAR UP - Services to PARENTS: # Participating in Workshops on College Prep/Financial Aid / Sum # Hours of Service Per Participant Receiving the Service Per Year	441/1609	N/A	1209/7124	239/540	Annual Academic Year	CHE Program Data, Reports of GEAR UP Graduation Coaches.	Tracked throughout the year	2.1.3	Performance Measure will assist staff with monitoring services provided, use of funds and possible future funding of SC GEAR UP. Services provided are required per the GEAR UP grant.
<p>***Services are reported each April on the previous academic school year. This information reflects the 2014-15 school year and 2015-16 school year. Information regarding the 2016-17 school year will be reported in April 2018. ***</p>										

Agency Name: Commission on Higher Education

Fiscal Year 2016-2017
Accountability Report

Agency Code: H030 Section: 011

Legal Standards Template

Item #	Law Number	Jurisdiction	Type of Law	Statutory Requirement and/or Authority Granted	Does this law specify who (customer) the agency must or may serve? (Y/N)	Does the law specify a deliverable (product or service) the agency must or may provide? (Y/N)
1	2-47-40(B)	State	Statute	Institutions of higher learning submit permanent improvement project proposals and justifications to SFAA via the CHE, which submits all materials in addition to comments and recommendations. The CHE shall list projects in order of priority as deemed appropriate by CHE. SFAA shall forward materials to JBRC.	Yes	Yes
2	2-47-55(A)	State	Statute	The CPIP for each higher education agency must be submitted to JBRC and SFAA via the CHE, which shall review the CPIP and provide recommendations.	Yes	Yes
3	2-47-56	State	Statute	Each state agency and institution may accept gifts-in-kind for architectural and engineering services and construction of a value less than \$250,000 with the approval of the CHE or its designated staff, the director of the department, and the JBRC or its designated staff.	Yes	No
4	2-75-10	State	Statute	The Research Centers of Excellence Review Board shall annually provide to the CHE a schedule by which applications for funding are received and awarded on a competitive basis, the awarding of matching funds, and oversight and operation of the Centers of Excellence Matching Endowment.	Yes	No
5	2-75-70	State	Statute	Staff and support for the Research Centers of Excellence Review Board and the panel of experts must be provided by the CHE. The CHE shall approve all necessary fund for the operation of the board.	Yes	Yes
6	2-77-20	State	Statute	The CHE must administer the SC Higher Education Excellence Enhancement Program. The CHE must enter into annual contracts with eligible institutions to accomplish the purposes of the program, must certify the eligibility of institutions seeking contracts, must annually review and determine if funds were properly used by institutions, and shall give priority to proposals that can be matched with federal funds. Funds appropriated for this program must be allocated equally among eligible institutions.	Yes	Yes
7	2-77-30	State	Statute	The CHE must enter into contract with institutions for the administration of the SC Higher Education Excellence Enhancement Program for the uses listed in this section: construction/maintenance, faculty exchange and development, purchase of educational materials, tutoring and counseling, funds management, joint use of facilities, establishing or strengthening a development office, establishment or enhancement of a teacher education program, other activities approved by the Commission. Institutions must keep records required by the CHE.	Yes	Yes
8	2-77-50	State	Statute	The CHE must promulgate regulations and establish procedures to administer the SC Higher Education Excellence Enhancement Program.	Yes	Yes

9	8-17-380	State	Statute	Each four-year post-secondary educational institution, including branch campuses shall establish grievance and performance appraisal procedure for academic employees in writing, subject to approval by the Director of DOA and the CHE.	Yes	Yes
10	11-51-125	State	Statute	12% of the \$250 million of authorized maximum of general obligation bonds (11-51-40), must be allocated by the CHE to public institutions of higher learning (not including research institutions) for deferred maintenance projects. 65% of total 12% must be allocated based on a reported deferred maintenance needs list from the eligible institutions, 35% of total 12% must be allocated by full -time enrollment from the prior academic year at the eligible institutions.	Yes	Yes
11	11-51-190	State	Statute	Research universities must work in conjunction with the State Fiscal Accountability Authority's Chief Procurement Officer to establish alternate procurement procedures, and must submit a procurement process to the CHE to be forwarded to the SFAA for approval.	Yes	Yes
12	12-6-3385	State	Statute	The CHE may grant an extension of the income tax credit period due to medical necessity.	No	No
13	13-1-1840	State	Statute	The CHE, in conjunction with the State Board for Technical and Comprehensive Education, DEW, and the State Department of Education, shall assist in planning and promoting the career information, employment options, and preparation programs and in the establishment of regional education centers.	No	Yes
14	13-1-2030	State	Statute	Executive Director or his designee is a member of the Coordinating Council for Workforce Development; the CHE (in conjunction with the Department of Commerce and the State Board for Technical and Comprehensive Education) shall provide staff for the coordinating council.	Yes	Yes
15	13-17-40	State	Statute	Chairman of the CHE is an ex officio member of the SC Research Authority (SCRA).	No	No
16	48-52-865	State	Statute	The CHE recommends two members to the Governor for service on the Energy Independence and Sustainable Construction Advisory Committee, one of which shall be appointed from a research or comprehensive university and one of which shall be appointed from a regional two-year campus of USC or a technical college.	No	Yes
17	59-101-150	State	Statute	No new program shall be undertaken by any State-supported institution of higher learning without the approval of the Commission or the General Assembly.	Yes	Yes

18	59-101-187	State	Statute	A public institution of higher learning may expend funds for events which recognize academic and research excellence and noteworthy accomplishments of members of the faculty and staff, students, and distinguished guests of the institutions. The governing board of the institution must adopt a written policy regarding the expenditure of these funds and forward the policy to the CHE. The source of funds for these expenditures include only revenues from athletics/student contests, activities of student organizations, operations of canteens and bookstores, and approved private practice plans and all nonappropriated state funds.	Yes	Yes
19	59-101-190	State	Statute	The CHE must appoint five members to the Deans' Committee on Medical Education, one of whom must be a physician with experience in medical education, one of whom must be a representative of the business community, and three who are members of the Area Health Education Consortium medical education director's committee, who shall represent graduate medical education. The committee shall report to the CHE through the Committee on Academic Affairs. The CHE shall furnish adequate meeting space and professional and secretarial assistance for the committee.	Yes	Yes
20	59-101-210	State	Statute	A public institution of higher learning (excluding tech colleges) shall maintain a report of actual findings of violations of the institution's Conduct of Student Organizations by fraternity and sorority organizations, and shall submit a statement to the CHE within 14 days that the reports have been updated. The CHE shall place a link on its webpage to the institutions' updated reports.	No	Yes
21	59-101-340	State	Statute	25% of the funds appropriated by the General Assembly for the "Cutting Edge: Research Investment Initiative" must be allocated to the state's senior public colleges; if the number of quality proposals for funding does not require the full allocation, the balance must be distributed by the CHE to the state's public universities.	Yes	Yes
22	59-101-345	State	Statute	If equal division of appropriated funds between need-based grants and the Palmetto Fellows program exceeds the capacity to make awards in either program, the CHE has the authority to reallocate the remaining funds between the two programs. Public and independent institutions must give first priority for need-based grants to children and young adults in the custody of DSS and give the maximum allowable amount for that need-based grant; the CHE shall accept written verification from DSS that the child/young adult is in the custody of DSS.	Yes	Yes

23	59-101-350	State	Statute	<p>The CHE shall submit an annual report to the Governor and the General Assembly, to be published prior to January 15th of each year. The CHE shall submit a draft to all public, post-secondary institutions and shall allow comment on the draft report. Each year, the four-year and two-year post-secondary institutions shall submit to the CHE data for inclusion in the report. Required data points are listed in statute. In the annual report, the CHE is required to report on the progress of institutions of higher education in implementing assessment programs, in their achievement of effectiveness goals, and on each institution's standard of achievement in regard to performance indicators for academic success listed in 59-103-30.</p> <p>The CHE shall cooperate with public, post-secondary institutions to develop a survey to determine alumni satisfaction. Information from the surveys must be included every two years in the annual report.</p> <p>The CHE shall make no funding decision, capital outlay decision, distribution or certification to any public, post-secondary institution that has not submitted the data required above. After discussion with the institutions, the CHE shall consult with the House Education and Public Works Committee and Senate Education Committee to develop the format for higher education reports described above.</p>	Yes	Yes
24	59-101-360	State	Statute	<p>Sales tax revenue from the tax on catalog sales which exceeds the revenues from such sales in FY 1991-1992 must be credited by the State Treasure to the Mail Order Sales Tax Fund. The CHE must develop a formula for distribution of 5% of the first \$100 million credited to the fund to public higher education institutions with teacher education programs.</p>	Yes	Yes
25	59-103-10	State	Statute	<p>The CHE is created as a 15 member board appointed by the Governor.</p>	No	No
26	59-103-15	State	Statute	<p>Higher education mission and goals include: high academic quality, affordable and accessible education, instruction excellence, coordination and cooperation with public education, cooperation among the CHE, the General Assembly, the COP, institutions of higher learning, and the business community, economic growth, and clearly defined missions. Further missions are defined for each type of institution of higher learning or other post-secondary school.</p>	Yes	Yes
27	59-103-17	State	Statute	<p>The CHE may enter into interstate reciprocity agreements, including SARA, that authorize accredited degree-granting institutions of higher education that offer postsecondary distance education to do so through such reciprocity agreements. The CHE shall administer these agreements and approve/disapprove participation in these agreements. Those institutions that do not participate in the reciprocity agreement are not prohibited from offering postsecondary distance education.</p>	Yes	Yes

28	59-103-20 - a	State	Statute	The CHE is charged with examining the state's institutions of higher learning relative to short and long-range programs and missions including the role of state-supported higher education in serving the needs of the state and the roles and participation of the individual institutions in the statewide program.	Yes	Yes
29	59-103-20 - b	State	Statute	The CHE is charged with examining the state's institutions of higher learning relative to short and long-range programs and missions including enrollment trends, student costs, business management practices, accounting methods, operating results and needs, and capital fund requirements.	Yes	Yes
30	59-103-20 - c	State	Statute	The CHE is charged with examining the state's institutions of higher learning relative to short and long-range programs and missions including the administrative setup and curriculum offerings of the several institutions and of the various departments, schools, institutions, and services within each institution.	Yes	Yes
31	59-103-20 - d	State	Statute	The CHE is charged with examining the state's institutions of higher learning relative to short and long-range programs and missions including areas of state-level coordination and cooperation with the objective of reducing duplication, increasing effectiveness, and achieving economies and eliminating sources of friction and misunderstanding.	Yes	Yes
32	59-103-20 - e	State	Statute	The CHE is charged with examining the state's institutions of higher learning relative to short and long-range programs and missions including efforts to promote a clearer understanding and greater unity and good will among all institutions of higher learning, both public and private, in the interest of serving the educational needs of the people of the state.	Yes	Yes
33	59-103-20 - part 1	State	Statute	The CHE has authority and responsibility for coordinated, efficient, and responsive higher education in the State.	Yes	Yes
34	59-103-20 - part 2	State	Statute	The CHE shall coordinate and collaborate with the Council of Presidents of State Institutions, the council of board chairs of the various public institutions of higher learning, and the business community.	Yes	Yes
35	59-103-25 - part 1	State	Statute	The CHE shall compile and publish legislation applicable to it so that relationships may be clearly established and understood.	Yes	Yes

36	59-103-25 - part 2	State	Statute	The commission shall create such standing committees as it may deem necessary; the creation of committees and duties shall be prescribed by a two-thirds vote of the membership of the commission. Special committees may be created by a majority vote.	Yes	Yes
37	59-103-30	State	Statute	Critical success factors for academic quality in the institutions of higher learning are: mission focus, quality of faculty, classroom quality, institutional cooperation and collaboration, administrative efficiency, entrance requirements, graduates' achievements, user-friendliness of the institutions, research funding. The CHE, when using the critical success factors for the purpose of funding recommendations for institutions of higher learning, is required to use objective, measurable criteria.	Yes	Yes
38	59-103-35 part 1	State	Statute	All public institutions of higher learning shall submit annual budget requests to the commission. The State Board for Technical and Comprehensive Education shall submit an annual budget request to the commission representing the total requests of all area-wide technical and comprehensive education institutions. The budget request for the public higher education system shall be submitted by the commission to the Governor and appropriate standing committees of the General Assembly. Supplemental appropriations requests from any public institution must first be submitted to the commission.	Yes	Yes
39	59-103-35 part 2	State	Statute	No new program may be undertaken by any public institution of higher education without the approval of the commission.	Yes	Yes
40	59-103-36	State	Statute	Military students in the senior colleges and universities of the State shall be included in the count of full-time equivalent students for the purpose of determining the appropriation for each institutions. The CHE and the Revenue and Fiscal Affairs office may make whatever audit adjustments are necessary to carry out this intent.	Yes	Yes
41	59-103-40 - part 1	State	Statute	The CHE shall establish a council of presidents consisting of the presidents of the state institutions of higher learning. The council shall appoint a chairman and such other officers and committees as it may see fit. It shall meet at least 4 times per year, of which two meetings will be held jointly with the commission.	Yes	Yes

42	59-103-40 - part 2	State	Statute	The council of presidents shall establish committees consisting of qualified personnel representing the various state-supported institutions, either upon request of the commission or upon its own initiative to investigate, study and report to the commission on such subjects as: academic planning, business and financial coordination, and library utilization and coordination.	Yes	Yes
43	59-103-45(1)	State	Statute	The CHE shall establish procedures for the transferability of courses at the undergraduate level between two-year and four-year institutions.	Yes	Yes
44	59-103-45(2)	State	Statute	The CHE shall coordinate with the State Board of Education in the approval of secondary education courses for the purpose of determining minimum college entrance requirements and define minimum academic expectations for prospective post-secondary students, communicate these expectations to the State Board of Education, and work with the state board to ensure these expectations are met.	Yes	Yes
45	59-103-45(3)	State	Statute	The CHE shall review minimum undergraduate admissions standards for in-state and out-of-state students.	Yes	Yes
46	59-103-45(4) a	State	Statute	The CHE shall develop standards for determining how well an institution has met or achieved the performance indicators for quality academic success (59-103-30).	Yes	Yes
47	59-103-45(4) b	State	Statute	The CHE shall base the higher education funding formula in part on the achievement of the standards set for the performance indicators.	Yes	Yes
48	59-103-45(4) c	State	Statute	The CHE shall promulgate regulations to implement the achievement measures and funding formula in items (a) and (b).	Yes	Yes
49	59-103-45(4) d	State	Statute	The CHE shall develop a higher education funding formula based entirely on the institutions achievement of standards set for performance indicators. The funding formula must be contained in regulations promulgated by the commission and submitted to the General Assembly for its review.	Yes	Yes

50	59-103-45(5)	State	Statute	The CHE shall reduce, expand, consolidate, or close any institution of higher education which does not meet the standards of achievement in regard to the performance indicators for academic success.	Yes	Yes
51	59-103-45(6)	State	Statute	The CHE shall review and approve each institutional mission statement to ensure it is within the overall mission of that particular type of institution.	Yes	Yes
52	59-103-45(7)	State	Statute	The CHE shall ensure access and equity opportunities at each institution of higher learning for all citizens of the state regardless of race, gender, color, creed, or national origin within the parameters provided by law.	Yes	Yes
53	59-103-50	State	Statute	An Advisory Council of Private College Presidents shall be established under the auspices of the CHE, to counsel with and advise the CHE regarding nonpublic colleges and their role in overall programs of higher education in the state. The council shall meet at least once annually with the CHE.	Yes	Yes
54	59-103-55	State	Statute	Each four-year campus of each state-supported public institution of higher learning shall have equal representation on all formal and informal councils, advisory groups, committees, and task forces of the CHE. Independent four-year colleges shall have representation on all formal and informal committees and commissions dealing with higher education statewide issues.	Yes	Yes
55	59-103-60	State	Statute	The CHE shall make recommendations to the Governor's Office and General Assembly as to policies, programs, curricula, facilities, administration, and financing of all state-supported institutions of higher learning.	Yes	Yes
56	59-103-65	State	Statute	If an institution is closed by the commission, the institutions shall be treated as a terminated agency. Any remaining funds shall not revert to the general fund, but instead shall be reallocated to higher education funding through use of the higher education funding formula in the manner the commission shall provide.	Yes	Yes
57	59-103-70	State	Statute	The Commission shall make reports to the Governor and the General Assembly at least annually on the status and progress of higher education in the state, with such recommendations as may be appropriate.	Yes	Yes
58	59-103-80	State	Statute	Expenses of the Commission shall be carried in the annual appropriate for the State. Commissioners are allowed per diem and mileage as authorized by law for members of boards, commissions, and committees.	No	Yes

59	59-103-90	State	Statute	Executive director must be appointed by the Commission. The executive director shall establish a professional staff.	No	Yes
60	59-103-110	State	Statute	No public institution of higher learning shall be authorized to construct or purchase any new permanent facility at any location other than on a currently approved campus or on property immediately contiguous thereto unless the new location or purchase of improved or unimproved real property has been approved by the CHE.	Yes	Yes
61	59-103-120	State	Statute	The CHE shall publish a list of accrediting agency/agencies approved by it for accreditation of chiropractic colleges or schools doing business in the state. If chiropractic schools do not obtain accreditation, the CHE shall revoke the status of the school as a recognized college or school of chiropractic.	Yes	Yes
62	59-103-130	State	Statute	The CHE shall adopt guidelines whereby the publicly supported colleges and universities of this state shall emphasize teaching as a career opportunity and provide students interested in a teaching career with opportunities to tutor other students.	Yes	Yes
63	59-103-140	State	Statute	The CHE, in consultation with the State Board of Education, may contract with selected public or private colleges and universities, or groupings of such institutions, to provide centers of excellence in programs designed to train teachers. The CHE shall devise guidelines and procedures by which institutions may apply for such contracts. Funds for implementing this activity shall be appropriated annually to the CHE.	Yes	Yes
64	59-103-160	State	Statute	English Fluency in Higher Learning Act. Each institution of higher learning must submit its policy or amendments to the CHE. The CHE shall notify the chairmen of the Senate and House Education Committees of those institutions not submitting plans.	Yes	Yes
65	59-103-162	State	Statute	The CHE shall review annually the activities of the SC Manufacturing Extension Partnership, make a budget recommendation to the General Assembly, and coordinate the allocation of funds among each participating institution. The CHE shall review the membership of the SC Manufacturing Extension Partnership board to ensure appropriate representation of each participating institution.	Yes	Yes

66	59-103-165	State	Statute	The CHE is directed to work with the state's public institutions of higher education, and private institutions of higher education which wish to participate, to develop and information package for eighth grade students on the options of post-secondary education available in SC, the courses required to attend colleges, and the financial requirements and assistance available.	Yes	Yes
67	59-103-170	State	Statute	The CHE shall work with the state's public institutions of higher education and private higher education institutions wishing to participate, to provide annually for the state's eighth grade students and their parents small group and one-on-one counseling on required high school courses and post-secondary options, financial requirements, and assistance available for a post-secondary education. These sessions must be held at each of the state's public schools which house an eighth grade class.	Yes	Yes
68	59-103-180	State	Statute	The State Board of Education, the State Department of Education, and the state's public school districts and schools shall cooperate with the CHE in providing counseling to the state's eighth grade students.	Yes	Yes
69	59-103-195	State	Statute	The CHE have review authority to determine the legitimacy and appropriateness of tasting requirements. The CHE shall also establish reasonable rules and restrictions through regulations regarding a proposed course of instruction in the culinary arts which involves the tasting of alcoholic beverages for students under twenty-one years of age.	Yes	Yes
70	59-104-10(A)	State	Statute	The CHE, in consultation with and coordination with the public institutions, shall ensure that minimal admissions standards are maintained by the institutions. The CHE, with the institutions, shall monitor the effect of compliance with admissions prerequisites that are effective at the institution.	Yes	Yes
71	59-104-10(B)	State	Statute	The boards of trustees of each public institution of higher learning, excluding the State Board for Technical and Comprehensive education, shall adopt admission policies reflecting the desired mix of in-state and out-of-state enrollment appropriate for each institution. The boards shall submit the policies to the commission by July 1, 1989 and any subsequent changes to the policies must be submitted to the commission. The admission policies and standards shall be reviewed by the commission as provided in section 59-103-45.	Yes	No
72	59-104-20(A)	State	Statute	The CHE shall promulgate regulations and establish procedures to administer the Palmetto Fellows Scholarship Program and request annual state appropriations for the program.	Yes	Yes

73	59-104-20(C)	State	Statute	A percentage of the funds available for Palmetto Fellows Scholarships must be allocated for students attending SC independent colleges. The percentage is equivalent to the percentage of the independent colleges' share of the total SC resident undergraduate FTE of all public and independent higher education institutions in SC, based on the previous year's data, as determined by the CHE and the SC Tuition Grants Commission.	Yes	Yes
74	59-104-20(G)	State	Statute	If the top six percent of a graduating class is not a whole number of students, the CHE shall round up to the next whole number of students eligible. If the CHE determines that a state-approved standardized grading scale substantially deviates from the SC Uniform Grading Scale, the state-approved grading scale shall not be used to meet the eligibility requirements for the Palmetto Fellows Scholarship.	Yes	Yes
75	59-104-20(I)	State	Statute	The CHE shall, by regulation, define alternative qualifications for an exceptionally gifted student who is a resident of SC and is accepted into an institution of higher learning without having attended or graduated from high school for Palmetto Fellows Scholarship.	Yes	Yes
76	59-104-25(B)	State	Statute	The CHE shall, by regulation, define what constitutes a science or mathematics major; the CHE shall annually communicate with high school guidance counselors regarding the list of qualifying majors.	Yes	Yes
77	59-104-30	State	Statute	Each public institution of higher learning shall develop a plan for developmental education in accord with provisions procedures, and requirements developed by the CHE. The CHE shall develop appropriate methods of funding developmental education programs and courses.	Yes	Yes
78	59-104-40	State	Statute	The CHE shall request state appropriates for the conversion from quarter to semester calendar within the technical education system, over a two year period. The State Board for Technical and Comprehensive Education, in consultation with the CHE, shall limit the offering of courses designed for college transfer in those technical colleges that do not have approved college transfer program. The offering of "college parallel" general education courses in institutions not authorized to award the associate in arts or associate in science degree is limited to those necessary to support approved nontransfer programs.	Yes	Yes
79	59-104-210	State	Statute	The CHE shall administer a competitive grants program to improve undergraduate education in SC. The CHE shall promulgate appropriate regulations and request annual state appropriates for this purpose.	Yes	Yes

80	59-104-220	State	Statute	The CHE in conjunction with the Governor's office shall establish a committee to choose a Professor of the Year from a senior institution and a Professor of the Year from an institution offering no degree above the associate's degree. The CHE shall request annual state appropriations for the award.	Yes	Yes
81	59-104-230	State	Statute	The CHE shall request state funds and establish procedures to implement a program of endowed professorships at senior public institutions of higher learning.	Yes	Yes
82	59-104-240	State	Statute	The CHE shall request state funds to implement a program to endow salary enhancements for outstanding faculty in technical colleges and two-year campuses of the University of South Carolina. The CHE, in collaboration with the State Board for Technical and Comprehensive Education and the University of South Carolina, shall establish procedures to implement the program.	Yes	Yes
83	59-104-250	State	Statute	The CHE shall request special appropriations to accomplish the conversion to a computer-based automated system at technical college libraries.	Yes	Yes
84	59-104-260	State	Statute	The CHE shall encourage the development of joint programs that take advantage of the strengths of the public colleges and universities and discourage the development of independent competitive programs.	Yes	Yes
85	59-104-410	State	Statute	The Research Investment Fund must consist of appropriations to the CHE which it allocates to the institutions for research.	Yes	Yes
86	59-104-420	State	Statute	The Research Investment Fund must be used for research which serves to improve the quality of undergraduate and graduate education for SC citizens in accordance with the institutions' state missions as given in the CHE's master plan and developed by the institution and approved by the CHE.	Yes	Yes
87	59-104-430	State	Statute	At the end of each FY, comprehensive reports must be made to the CHE on the expenditures of the Research Investment Fund and the results realized from the research projects. Each FY, the CHE shall reexamine the process of appropriating funds for research and the results obtained and recommend changes and alterations in the funding of research by the state, if changes are considered advisable by the CHE.	Yes	Yes

88	59-104-440	State	Statute	Institutions (except USC, Clemson, and MUSC) seeking financial support from the Research Investment Fund for research projects shall submit proposals to the CHE for review. No funds allocated under the Fund, nor matching funds received, may be used to increase an institution's future years' formula funding as computed by the CHE.	No	No
89	59-104-610	State	Statute	The CHE shall maintain a statewide planning system to address strategic issues in public and private higher education.	Yes	Yes
90	59-104-620	State	Statute	The CHE shall establish an Advisory Council on Planning to assist the commission and the institutions of higher learning in maintaining planning as a high priority.	Yes	Yes
91	59-104-630	State	Statute	The CHE shall ensure that each public institution of higher learning maintains its individual planning process.	Yes	Yes
92	59-104-640	State	Statute	The CEO of the CHE shall develop a prospectus for planning each year.	No	Yes
93	59-104-650	State	Statute	Institutional Effectiveness Program. Each institution is responsible for maintaining a system to measure institutional achievement in regard to the performance indicators for quality academic success in accord with the provisions, procedures, and requirements developed by the CHE. Each institution shall provide the CHE with an annual report on the results of its institutional achievement program. The CHE shall prepare a report that must include results of institutional achievement.	Yes	Yes
94	59-104-660	State	Statute	All state-supported institutions of higher learning shall establish their own procedures and programs to measure student achievement. The procedures and programs must be submitted to the CHE as part of the plan for measuring institutional achievement.	Yes	No
95	59-105-60	State	Statute	The CHE shall develop, print, and distribute a model sexual assault policy for institutions of higher learning. The model policy shall be distributed to all institutions of higher learning in the state for their use as a reference in formulating their sexual assault policy.	Yes	Yes

96	59-110-10	State	Statute	The SC Critical Needs Nurse Initiative Fund is created under the CHE to provide incentives to retain nurse faculty scholars, attract new nurse faculty, provide loans, grants, and scholarships to in-state resident nursing students, and establish a research office to predict health care workforce needs, and provide technology to increase accessibility to clinical education needs.	Yes	No
97	59-110-20(A)	State	Statute	The CHE shall administer the provisions and the funding of the Critical Needs Nursing Initiative Fund. The CHE shall make disbursements from the Fund to the institutions or students.	Yes	Yes
98	59-110-20(B)	State	Statute	The CHE shall consult with the members of the ACAP from institutions with accredited nursing programs and the chairperson of the SC Council of Deans and Directors in in Nursing Education.	Yes	Yes
99	59-110-30(B)	State	Statute	Once the first priority for faculty salary enhancements has been provided in an amount not exceeding six million dollars in total funds for the program from each year funds are allocated for any year, the CHE shall fund other priorities in such amounts as it considers appropriate within available funding.	No	Yes
100	59-110-40(B)	State	Statute	In regard to faculty salary enhancements, the CHE, upon consultation with members of the ACAP from institutions with accredited nursing programs and the chairperson, or designee, of the South Carolina Council of Deans and Directors in Nursing Education, shall determine and distribute funds from the Critical Needs Nursing Initiative Fund to the institutions where such faculty are employed.	Yes	Yes
101	59-110-50(B)	State	Statute	The CHE, upon consultation with members of the ACAP from institutions with accredited nursing programs and the chairperson, or designee, of the South Carolina Council of Deans and Directors in Nursing Education, shall establish guidelines and criteria for funding the new positions to the recipient institutions based on faculty need.	Yes	Yes
102	59-110-50(C)	State	Statute	The CHE shall determine and distribute funds from the Critical Needs Nursing Initiative Fund to the institutions where the new faculty positions are to be located.	Yes	Yes
103	59-110-60(A)	State	Statute	The CHE shall provide funding for the Critical Needs Nursing Initiative Scholarship, Loan, and Grant Program from the Critical Needs Nursing Initiative Fund.	Yes	Yes

104	59-110-60(B)	State	Statute	Funds shall be allocated to four-year and graduate level institutions based on the institution's share of the total resident South Carolina student nursing population in that category of student, full-time or part-time. Disbursements of the applicable funds shall be made by the CHE to the institution, which in turn shall disburse the funds to the student.	Yes	Yes
105	59-110-60(E)	State	Statute	The CHE shall promulgate regulations relating to distribution and allocation of funding for the Critical Needs Nursing Initiative.	Yes	Yes
106	59-110-60(F)	State	Statute	The CHE may determine and distribute funds from the Critical Needs Nursing Initiative Fund to the institution for allocation to eligible students.	Yes	Yes
107	59-110-70 (D)	State	Statute	In regard to funding for the Office for Health Care Workforce Research, the commission upon consultation with members of the ACAP from institutions with accredited nursing programs and the chairperson, or designee, of the South Carolina Council of Deans and Directors in Nursing Education, shall determine and distribute funds from the Critical Needs Nursing Initiative Fund directly to the Office for Health Care Workforce Research.	Yes	Yes
108	59-110-80(A)	State	Statute	These funds for simulation technology must be allocated to the institutions with an accredited nursing program by the CHE. The CHE upon consultation with members of the ACAP from institutions with accredited nursing programs and the chairperson, or designee, of the South Carolina Council of Deans and Directors in Nursing Education shall develop guidelines as to how these funds must be allocated.	Yes	Yes
109	59-110-80(B)	State	Statute	In regard to the use of simulation technology and equipment in nursing education, the CHE shall determine and distribute funds from the Critical Needs Nursing Initiative Fund to the institutions where such funds will be used and the governing body of the institution shall determine how these funds shall be used.	Yes	Yes
110	59-110-80(C)	State	Statute	Funding for the use of simulation technology and equipment in nursing education shall be provided by the CHE from the Critical Needs Nursing Initiative Fund based on available funds.	Yes	Yes
111	59-110-90	State	Statute	The CHE and public institutions of higher learning providing nursing education may use funds provided for use in these areas that are derived from private or federal government sources.	Yes	Yes

112	59-111-25	State	Statute	If a mid-year budget reduction is imposed by the General Assembly or the State Executive Budget Office, the CHE appropriations for the LIFE Scholarship, need-based Grants, and the Palmetto Fellows Scholarship are exempt.	Yes	No
113	59-111-75(A)	State	Statute	The CHE, in consultation with the staff of the SC Student Loan Corporation, shall develop a loan repayment program through which talented and qualified state residents may attend state public or private colleges and universities for the purpose of providing incentives for enlisting or remaining the SC National Guard in areas of critical need. The CHE must annually define areas of critical need, in consultation with the State Adjutant General. The CHE shall promulgate regulations to set forth the terms of the loan repayment program. The CHE shall review the loan program annually and report to the General Assembly on its progress and results.	Yes	Yes
114	59-111-330	State	Statute	The CHE shall promulgate rules and regulations necessary for the implementation of the provisions of free tuition for residents sixty years of age and older.	Yes	Yes
115	59-112-70(B)	State	Statute	The CHE, through coordination with SFAA, will annually notify institutions of the Sister-State agreements eligible for the nonresident fee waiver.	Yes	Yes
116	59-112-100	State	Statute	The CHE may prescribe uniform regulations for application of the provisions of tuition and fees and may provide for annual review of such regulations.	Yes	Yes
117	59-113-10	State	Statute	The CEO of the CHE, or his designee, shall be an ex officio member of the Higher Education Tuition Grant Commission.	No	No
118	59-114-40	State	Statute	Members of the National Guard enrolled or planning to enroll in an eligible institution may apply to the CHE for a college assistance program grant. To be eligible, an applicant must satisfy any additional eligibility requirements as may be promulgated by the CHE.	Yes	No
119	59-114-65	State	Statute	Up to five percent of the amount appropriated to the college assistance program may be used to defray administrative costs incurred by the CHE associated with the implementation of the National Guard college assistance program.	No	No
120	59-114-75	State	Statute	The CHE shall disburse grants awarded for the National Guard college assistance program to the eligible institutions to be placed in an account established for each eligible student. The CHE shall administer the program and promulgate regulations as necessary to implement the provisions of the program.	Yes	Yes

121	59-118-60	State	Statute	The CHE shall administer the SC Higher Education Matching Gift Fund with the funds appropriated by the General Assembly in the general appropriations act of 1997-98. Disbursements shall be made by the State Treasurer on warrant and under the direction of the CHE.	Yes	Yes
122	59-118-70	State	Statute	The State of SC, acting through the CHE, shall provide funds to match funds from the qualifying college, university, or principal foundation, to the extent of available funds, from the SC Higher Education Matching Gift Fund.	Yes	Yes
123	59-118-80(3)	State	Statute	The college or university must make application to receive state matching funds on forms and under procedures prescribed by the CHE.	Yes	Yes
124	59-118-90	State	Statute	The CHE shall specify by regulation the procedures for submission and documentation of requests for matching state funds.	Yes	Yes
125	59-118-100	State	Statute	The CHE shall ensure that each qualifying college or university receives its proportionate share of the State Higher Education Matching Gift Fund based on the ratio of disbursements.	Yes	Yes
126	59-142-20	State	Statute	The CHE shall be responsible for making guidelines available for FY 96-97 and shall promulgate regulations necessary to administer the need-based grants program.	Yes	Yes
127	59-143-30	State	Statute	The CHE determines the percentage of higher education scholarship and grant funds to be allocated to the SC independent colleges of higher learning, based on the percentage of the independent colleges' share of the total SC resident undergraduate FTE enrollment of all public and independent higher education institutions based on the previous year's data. The funds allocated for SC Tuition Grants to SC independent college students shall be included in the annual appropriation to the CHE. The funds allocated for Palmetto Fellows Scholarships to SC independent college students shall be included in the annual appropriation to the CHE.	Yes	Yes
128	59-149-10(A)	State	Statute	LIFE Scholarships cover the cost of attendance as defined by the CHE in regulation, up to a maximum of two thousand dollars a year to eligible resident students attending four-year public or independent institutions, and to cover the cost of attendance up to a maximum of one thousand dollars a year to eligible resident students attending two-year public or independent institutions.	Yes	Yes

129	59-149-15(B)	State	Statute	The CHE by regulation shall define what constitutes a science or mathematics major.	No	Yes
130	59-149-120	State	Statute	Any funds appropriated by the General Assembly to the CHE or any other agency, department, or institution to provide funding for these LIFE Scholarships may be carried forward from fiscal year to fiscal year.	No	No
131	59-149-130	State	Statute	The commission shall promulgate regulations and establish procedures to administer the provisions of the LIFE Scholarship. The CHE must ensure accountability for the scholarship by monitoring the distribution of grades at the institutions which receive these scholarship funds.	Yes	Yes
132	59-149-140	State	Statute	All institutions participating in the LIFE Scholarship Program must report their enrollment and other relevant data as solicited by the CHE which may audit these institutions to ensure compliance with this provision.	Yes	Yes
133	59-149-160	State	Statute	The CHE is authorized two additional FTEs to administer the LIFE Scholarship Program established by this chapter, the compensation for whom shall be provided from funds appropriated to the commission by the General Assembly.	Yes	No
134	59-149-50(A)	State	Statute	If the CHE determines that a state-approved standardized grading scale substantially deviates from the SC Uniform Grading Scale, the state-approved standardized grading scale shall not be used to meet the eligibility requirements for the LIFE Scholarship.	Yes	Yes
135	59-149-50(D)	State	Statute	The CHE may define alternative criteria for students to meet the requirement of graduating in the top 30% of his graduating class, for students who are home schooled and students whose high school graduating class is less than 50 students. The CHE shall define alternative criteria for an exceptionally gifted student who is accepted into college without having attended high school.	Yes	Yes
136	59-150-325(A)(1)	State	Statute	The Chairman of the CHE appoints three members on the Education Lottery Oversight Committee.	No	Yes

137	59-150-350(A)	State	Statute	The General Assembly shall consider, in the allocation of funds from the Education Lottery Account, the allocation of monies in the amount the General Assembly determines for the Commission on Higher Education and for the Administrative Law Judge Division, both to help defray their expenses incurred in the performance of their duties pursuant to this chapter; except that the amount of funding for the Commission on Higher Education and the Administrative Law Judge Division must be allocated by the General Assembly in its annual general appropriations bill or any bill appropriating monies for previous or current fiscal years.	No	No
138	59-150-350(D)	State	Statute	Funds made available from the Education Lottery account must be used for the CHE to offer tuition assistant at state technical colleges and two-year public institutions, for higher education assistance, and to administer a construction and renovation fund for the historically black colleges and universities.	Yes	Yes
139	59-150-355	State	Statute	Education lottery appropriations and uses (various items and amounts listed).	No	No
140	59-150-356	State	Statute	Notwithstanding any other provision of law, prior approval or involvement of the CHE beyond allocation of funds as described in this section is not required for use of Education Lotter funds for technology.	No	No
141	59-150-360(A)(4)	State	Statute	In applying for tuition assistant to attend a state technical college or a public two-year institutions, if a student feels that he will definitely not qualify to receive federal financial aid, the student may complete a simple form of minimum questions created by the State Board for Technical and Comprehensive Education and the CHE to determine if the student definitely will not qualify to receive federal financial aid. If it is determined that the student definitely will not qualify to receive federal financial aid, the student shall sign a form created by the State Board for Technical and Comprehensive Education and the CHE, and the student is exempted from completing the FAFSA. The State Board for Technical and Comprehensive Education and the CHE shall promulgate regulations to set thresholds for determining if a student definitely will not qualify to receive federal financial aid.	Yes	Yes

142	59-150-360(A)(5)	State	Statute	Regulations for implementation of tuition assistance to attend state technical college or a public two-year institution are the responsibility of the South Carolina State Board for Technical and Comprehensive Education, for the technical college system, and the CHE, for the two-year public and private institutions. These regulations must be developed in a coordinated effort, provide for the allocation of funds based on the tuition assistance granted at each institution, and be interchangeable between each of the institutions affected.	Yes	Yes
143	59-150-370	State	Statute	HOPE scholarships are authorized in an amount of up to \$2,500, plus a \$300 book allowance to cover the cost of attendance, as defined by the CHE by regulation, during the first year of attendance only, to an eligible student attending a four-year public or independent institution who does not also qualify for a LIFE Scholarship or a Palmetto Fellows Scholarship. The CHE must promulgate regulations and establish procedures to administer the scholarship. All institutions participating in the program must report their enrollment and other relevant data as solicited by the CHE which may audit these institutions to ensure compliance.	Yes	Yes
144	59-150-375	State	Statute	A visual or hearing impaired or multi-handicapped student who qualifies for state scholarship funds may receive state scholarship funds to attend an out-of-state institution that specializes in educating visual or hearing impaired or multi-handicapped students if the CHE certifies the student's impairment or multi-handicap and that no in-state institution exists to specifically meet the student's need.	Yes	Yes
145	59-150-380	State	Statute	The CHE in consultation with the SDE must develop an Education Lottery Teaching Scholarship Grants Program to provide certified teachers in the public schools of this state, grants not to exceed \$1,000 per year to attend public or private colleges and universities for the purposes of upgrading existing content area skills or obtaining a Master's Degree in the teacher's content area.	Yes	Yes
146	59-25-55	State	Statute	The Center for Educator Recruitment, Retention, and Advancement of South Carolina (CERRA-South Carolina) in cooperation with the CHE shall establish a program with the purpose of expanding the number of high achieving minority students entering teacher education programs. The program shall include, but not be limited to, identification of minority high school students who have an interest in teaching and recruitment of those students into the teacher cadet program, personal counseling of minority students in the teacher cadet program about high demand certification areas, and college opportunities.	Yes	Yes

147	59-26-20(a)	State	Statute	The CHE and the SDE shall develop and implement a plan for continuous evaluation and upgrading of standards for program approval of undergraduate and graduate education programs at colleges and universities for training, certification and evaluation of public educators.	Yes	Yes
148	59-26-20(b) and (c)	State	Statute	The CHE and the SDE shall adopt policies and procedures which result in visiting teams with a balanced composition of teachers, administrators, and higher education faculties; program approval procedures assure that members of visiting teams have attended training programs in program approval within two years prior to service.	Yes	Yes
149	59-26-20(d)	State	Statute	The CHE and the SDE shall render advice and aid to departments and colleges of education regarding curricula, standards, and results on the examinations.	Yes	Yes
150	59-26-20(e), (f), and (g)	State	Statute	The CHE and the SDE shall adopt program approval standards requiring that students complete the basic skills examination before admittance into the undergraduate teacher education program; they shall administer the examination three times per year; report the results of examinations to colleges, universities and students in a form that provides specific information.	Yes	Yes
151	59-26-20(h)	State	Statute	The CHE and the SDE shall adopt program approval standards so that all colleges and universities that offer undergraduate degrees in education shall require one semester of student teaching and other field experiences.	Yes	Yes
152	59-26-20(i)	State	Statute	The CHE and the SDE shall adopt program approval standards where each student teacher must be evaluated and assisted by representatives of the school in which he or she is enrolled.	Yes	Yes
153	59-26-20(j)	State	Statute	The CHE, in consultation with the SDE and the SC Student Loan Corporation, shall develop a loan program in which qualified and talented students may be provided loans to attend public or private colleges and universities for the sole purpose of becoming certified teachers in areas of the state of critical need; Appropriates for loans and administrative costs incurred by the Student Loan Corporation are to be provided in annual amounts, recommended by the CHE, to the State Treasurer.	Yes	Yes
154	59-26-20(k)	State	Statute	The CHE and the SDE shall adopt program approval standards for initial certification and amend the course requirements so that students seeking certification in special education in the area of vision can demonstrate competence in reading and writing braille.	Yes	Yes

155	59-26-20(l)	State	Statute	The CHE and the SDE shall adopt program approval standards so that students who are pursuing a program in a college or university in this State which leads to certification as instructional or administrative personnel shall complete successfully training and teacher development experiences in teaching higher order thinking skills.	Yes	Yes
156	59-26-20(m)	State	Statute	The CHE and the SDE shall adopt program approval standards so that programs in a college or university in this State which lead to certification as administrative personnel must include training in methods of making school improvement councils an active and effective force in improving schools.	Yes	Yes
157	59-26-20(n)	State	Statute	The CHE, in consultation with the State Department of Education and the staff of the South Carolina Student Loan Corporation, shall develop a Governor's Teaching Scholarship Loan Program to provide talented and qualified state residents loans not to exceed five thousand dollars a year to attend public or private colleges and universities for the purpose of becoming certified teachers employed in the public schools of this State.	Yes	Yes
158	59-48-20	State	Statute	The executive director of the CHE or his designee shall serve as an ex officio member of the Governor's School for Science and Mathematics Board of Trustees.	No	No
159	59-50-20	State	Statute	The executive director of the CHE or his designee shall serve as an ex officio member of the Governor's School for the Arts and Humanities Board of Trustees.	NO	No
160	59-53-40	State	Statute	The State Board for Technical and Comprehensive Education shall maintain coordination with the CHE; the Board shall submit a budget and enrollment data for existing and proposed college parallel courses or associate degree programs with college transfer credit to the CHE for comment prior to submission of the Board's total budget to the EBO.	Yes	Yes

161	59-54-20	State	Statute	CHE members shall make up a majority of the State Council on Vocational and Technical Education (COMMITTEE IS NO LONGER OPERATIONAL); the CHE shall serve as the State Occupational Training Advisory Committee and in this regard make recommendations to the State Board of Education, the State Tech Board, the Governors Office and the public regarding improving the coordination among the state's plans and programs for adult career and technology education, adult basic and adult secondary education, post-secondary technical education, and secondary career and technology education; assuring the compatibility of these educational plans and programs with the state's economic development strategies; improving the articulation between secondary career and technology education and post-secondary technical education and between post-secondary technical education and four-year degree programs; improving service to groups or communities in the State which are unserved or underserved and need additional training and education to be employed or to move into the work force and off of public assistance; improving the accountability systems and effectiveness of the adult career and technology education, adult basic and adult secondary education, post-secondary technical education, and secondary career and technology education programs; improving the implementation of the SC Employment Revitalization Act of 1986.	Yes	Yes
162	59-58-100	State	Statute	All enrollment agreements and contracts entered into by nonpublic educational institutions are void unless the institution holds a valid license from the CHE and the agent enrolling students holds a valid permit from the CHE.	Yes	No
163	59-58-110	State	Statute	The CHE shall give a person notice of facts and conduct and an opportunity to show compliance before a final proceeding to deny, revoke or suspend a license or permit. The CHE may deny or revoke a license or permit if the commission determines the violations are habitual, willful, and therefore likely to reoccur.	Yes	Yes
164	59-58-120	State	Statute	A person may appeal the CHE's refusal to issue a license or permit, or revocation or suspension of a license or permit previously granted, to the Administrative Law Court.	Yes	No
165	59-58-30	State	Statute	The definition of "nonpublic educational institution" does not include institutions offering noncredit bearing courses exclusively for avocational purposes as determined by the commissioner.	Yes	No
166	59-58-40	State	Statute	The CHE is the sole authority for licensing nonpublic education institutions established in SC and for those established elsewhere which want to operate in or confer degrees in SC. The CHE may promulgate regulations as may be necessary for administration and enforcement.	Yes	Yes

167	59-58-50	State	Statute	No nonpublic educational institution may operate, solicit students for enrollment or confer degrees or other educational credentials unless first licensed by the CHE. The CHE shall approve through licensure the location of and programs offered by an institution.	Yes	Yes
168	59-58-60	State	Statute	An institution may use the term "college" in its name only if licensed by the CHE and if it offers at least one program leading to an associate or higher degree. Unless an institution was licensed and operational in SC and using "university" in its name before 1992, or is an out-of-state institution that is chartered and licensed in its home state using the term "university" in its name, the institution must petition the CHE for approval to use "university" in its name.	Yes	Yes
169	59-58-70	State	Statute	The CHE may set reasonable fees for administration of licensing.	Yes	Yes
170	59-58-80	State	Statute	Before an institution is licensed under this chapter, the CHE may require that a surety bond be provided by the institution in an amount in compliance with the regulations prescribed by the commission. The CHE may promulgate regulations establishing a student recovery fund for nonpublic educational institutions.	Yes	Yes
171	59-58-90	State	Statute	An individual must secure an annual permit from the CHE in order to solicit students or sell and course or program of instruction at a nonpublic educational institution.	Yes	Yes
172	59-58-130	State	Statute	If it appears to the CHE that any person is or has been violating the provisions or regulations, the CHE shall request the AG, the solicitor, or any appropriate official having jurisdiction in the county in which the nonpublic educational institutions or its agent is located, to bring a civil action to restrain that person from violation. The CHE may recover a civil penalty not exceeding \$5,000 for each violation. The CHE may bring civil action against a person who violated the terms of an injunction of not more than \$15,000.	Yes	Yes
173	59-59-190	State	Statute	The CHE, in collaboration with DEW and the State Board for Technical and Comprehensive Education, shall assist the Department of Education in planning and promoting career information and employment options and preparation programs.	Yes	Yes

174	59-59-210	State	Statute	The CHE shall convene the Advisory Committee on Academic Programs (ACAP) to address articulation agreements between school districts and public institutions of higher education in SC to provide for prepared students to move from high school into intuitions of higher education. ACAP shall make recommendations to the CHE regarding coursework that is acceptable statewide for dual enrollment. ACAP and the SDE shall coordinate work to study the content and rigor of high school courses to provide seamless pathways to postsecondary education. The CHE shall submit an annual report to the Education and Economic Development Coordinating Council regarding ACAP's progress.	Yes	Yes
175	Act 96 of 2017	State	Statute	Section 59-18-1950 is added: B(1) The Revenue and Fiscal Affairs Office, working with the Office of First Steps to School Readiness, the South Carolina Department of Education, the CHE, DSS, the South Carolina Technical College System, the Department of Commerce, DEW, and other state agencies or institutions of higher education, shall develop, implement, and maintain a universal identification system that includes information for measuring the continuous improvement of the state public education system and the college and career readiness and success of its graduates.	No	Yes
176	FY 16-17 Proviso 1A.51.	State	Proviso	CERRA must complete periodic evaluations of the institutions currently hosting a Teaching Fellows (TF) program and ensure that the TF programs at the current host institutions continue to meet the requirements for a TF program as set forth by the CERRA Board of Directors. Further, CERRA will continue implementing a long-range plan for approving additional TF programs at other public, four-year institutions who wish to be considered to host a TF program, provided the proposed programs meet the requirements set forth by the CERRA Board of Directors. CERRA will publish TF program criteria and requirements prominently on its website. Any institution who applies but is not selected to host a TF program will be informed in writing of the basis for the selection decision and be offered technical support if the institution elects to reapply. Any institution that applies but is not selected to host a TF program may appeal to the CHE.	Yes	No

Of the funds appropriated for the Teacher Recruitment Program, the CHE shall distribute a total of 92% to the Center for Educator Recruitment, Retention, and Advancement (CERRA-South Carolina) for a state teacher recruitment program, of which at least 78% must be used for the Teaching Fellows Program specifically to provide scholarships for future teachers, and of which 22% must be used for other aspects of the state teacher recruitment program, including the Teacher Cadet Program and \$166,302 which must be used for specific programs to recruit minority teachers: and shall distribute 8% to SC State University to be used only for the operation of a minority teacher recruitment program and therefore shall not be used for the operation of their established general education programs. Working with districts with an absolute rating of At-Risk or Below Average, CERRA will provide shared initiatives to recruit and retain teachers to schools in these districts. CERRA will report annually by October 1 to the EOC and the Department of Education on the success of the recruitment and retention efforts in these schools. The CHE shall ensure that all funds are used to promote teacher recruitment on a statewide basis, shall ensure the continued coordination of efforts among the three teacher recruitment projects, shall review the use of funds and shall have prior program and budget approval. The SC State University program, in consultation with the CHE, shall extend beyond the geographic area it currently serves. Annually, the CHE shall evaluate the effectiveness of each of the teacher recruitment projects and shall report its findings and its program and budget recommendations to the House and Senate Education Committees, the State Board of Education and the Education Oversight Committee by October 1 annually, in a format agreed upon by the EOC and the Department of Education.

177

FY 16-17 Proviso 1A.6. Part 1

State

Proviso

Yes

Yes

With the funds appropriated, CERRA shall also appoint and maintain the South Carolina Teacher Loan Advisory Committee. The Committee shall be composed of one member representing each of the following: (1) CHE; (2) State Board of Education; (3) EOC; (4) CERRA; (5) South Carolina Student Loan Corporation; (6) South Carolina Association of Student Financial Aid Administrators; (7) a local school district human resources officer; (8) a public higher education institution with an approved teacher education program; and (9) a private higher education institution with an approved teacher education program. The members of the committee representing the public and private higher education institutions shall rotate among those institutions and shall serve a two-year term on the committee. The committee must be staffed by CERRA, and shall meet at least twice annually. The committee's responsibilities are limited to: (1) establishing goals for the Teacher Loan Program; (2) facilitating communication among the cooperating agencies; (3) advocating for program participants; and (4) recommending policies and procedures necessary to promote and maintain the program.

178

FY 16-17 Proviso 1A.6. Part 2

State

Proviso

Yes

No

179	FY 16-17 Proviso 1A.69.	State	Proviso	<p>With funds appropriated to the CERRA, in concert with the CHE, the Department of Education, and the EOC, CERRA shall initiate and conduct a study to identify and project the number of additional teachers needed annually in public school classrooms for grades K5 through 12, for school years beginning 2017 through 2027. The purpose of the study shall be to: (1) provide specific data and projections on the number of teachers expected to be needed as compared to the number available, by Subject Areas Taught as indicated in CERRA's annual Supply and Demand Report, and with a focus on critical need subject areas; (2) determine whether, individually and collectively, teaching programs at applicable institutions of higher learning in South Carolina have the capacity and infrastructure to fulfill projected needs in item (1); and (3) provide data for general use in estimating the fiscal impact of any new or revised programs being considered to incent more talented individuals to enter teacher training programs and more highly qualified teachers to remain in the profession for longer periods of time.</p>	Yes	Yes
180	FY 16-17 Proviso 1.17.	State	Proviso	<p>Of the non-program funds appropriated to the Department of Education, it and the CHE shall share data about the teaching profession in South Carolina. The data sharing should ensure (1) a systematic report on teacher supply and demand information and (2) data to determine classes being taught by public school teachers out of field of their preparation. The data collection should include but not be limited to: classes/subjects taught, number of students taught, percentage of teacher education graduates from SC colleges/universities who go into teaching, percentage of teacher education graduates who teach in public schools in SC, percentage of new teachers who leave the South Carolina teaching profession in the first three years of public school teaching due to unsuccessful evaluations, percentage of new teachers who leave the profession in the first three years of public school teaching in South Carolina who have successful evaluations, turnover rate of teachers and certification areas with highest vacancies.</p>	No	Yes

181	FY 16-17 Proviso 3.1.	State	Proviso	<p>Each state agency receiving lottery funds shall develop and implement procedures to monitor the expenditures of lottery funds in order to ensure that lottery funds are expended in accordance with applicable state laws, rules, and regulations. For institutions of higher learning, adopted procedures to monitor expenditures of lottery funds shall be reported to the CHE and the EBO by October 1, 2016, and these expenditures are subject to annual verification and audit by the CHE on a rotational schedule not to exceed three years. The annual verification and audit shall be funded from the funds appropriated to or authorized for the CHE and the commission shall not assess a fee or charge institutions of higher learning for performing this function. In addition, the CHE shall provide a report to the EBO, the Chairman of the Senate Finance Committee, and the Chairman of the House Ways and Means Committee by October 1 each year summarizing, by institution, how lottery funds were expended in the prior fiscal year, issues and concerns as well as institution responses to those issues and concerns discovered as a result of the commission's verification and/or audit activity during the prior fiscal year, if any.</p>	Yes	Yes
182	FY 16-17 Proviso 11.1.	State	Proviso	<p>The amounts appropriated in this section for "Southern Regional Education Board Contract Programs" and "Southern Regional Education Board Dues" are to be used by the CHE to pay to the SREB the required contract fees for SC students enrolled under the Contract for Services program of the SREB, in specific degree programs in specified institutions and the SREB membership dues.</p>	Yes	Yes
183	FY 16-17 Proviso 11.2.	State	Proviso	<p>Of the funds appropriated to the CHE for the African-American Loan Program, 73.7 percent shall be distributed to South Carolina State University and 26.3 percent shall be distributed to Benedict College, and must be used for a loan program with the major focus of attracting African-American males to the teaching profession. The CHE shall act as the monitoring and reporting agency for the African-American Loan Program.</p>	Yes	Yes
184	FY 16-17 Proviso 11.3.	State	Proviso	<p>Funds appropriated for GEAR-UP shall be used for state grants programs to reach disadvantaged middle school students to improve their preparation for college. Eligible South Carolina public schools and public institutions of higher education shall cooperate with the CHE in the provision of services under the GEAR-UP grant.</p>	Yes	Yes
185	FY 16-17 Proviso 11.4.	State	Proviso	<p>The State EPSCoR Committee shall have an executive committee consisting of one representative from each of the research institutions and one representative from the four-year teaching university sector.</p>	No	No

186	FY 16-17 Proviso 11.5.	State	Proviso	In the calculation of any across the board cut mandated by the EBO or General Assembly, the amount which the CHE is appropriated for SREB Professional Scholarship Programs and Fees, Dues and Assessments shall be excluded from the CHE's base budget. Funds appropriated for SREB programs may be carried forward into the current fiscal year and expended for the same purpose by the CHE.	No	No
187	FY 16-17 Proviso 11.6.	State	Proviso	Of the funds appropriated to the CHE under Section II. Other Agencies & Entities: Special Items: Performance Funding, 80% will be allocated to the EPSCoR program under the CHE to improve South Carolina's research capabilities and 20% will be allocated to support the management education programs of the School of Business at SC State University.	No	No
188	FY 16-17 Proviso 11.7.	State	Proviso	Members of the Armed Forces either active-duty, retired, or separated who are admitted to and enrolled in the SC Troop-to-Teachers Alternative Route to Certification program are entitled to pay in-state rates at participating state institutions for requisite program work.	No	No
189	FY 16-17 Proviso 11.8.	State	Proviso	For the current academic year, youth in the custody of DSS and attending a higher education institution in South Carolina are eligible for additional need-based grants funding of up to \$2,000 above the \$2,500 maximum. Foster youth must apply for these funds no later than May 1 of the preceding year. All other grants, both state and federal, for which these foster youth are eligible must be applied first to the cost of attendance prior to using the additional need-based grant funding. If the cost of attendance for a foster youth is met with other grants and scholarships, then no additional need-based grant may be used. DSS, in cooperation with the CHE will track the numbers of recipients of this additional need-based grant to determine its effectiveness in encouraging more foster youth to pursue a secondary education. No more than \$100,000 may be expended from currently appropriated need-based grants funding for this additional assistance.	Yes	Yes
190	FY 16-17 Proviso 11.9.	State	Proviso	For the current FY, the age limitation for those children of certain war veterans who may be admitted to any state-supported college, university, or post high school technical education institution free of tuition is suspended for eligible children that successfully appeal the Division of Veterans Affairs on the grounds of a serious extenuating health condition.	No	No

191	FY 16-17 Proviso 11.10.	State	Proviso	In the current FY before fall awards are made, to continue eligibility for LIFE and Palmetto Fellows Enhancement Stipends, students shall certify and the institutions shall verify that the student is meeting all requirements as stipulated by the policies established by the institution and the academic department to be enrolled as a declared major in an eligible program and is making academic progress toward completion of the student's declared eligible major. These determinations are subject to the verification and audit of the CHE. Institutions shall return funds determined to have been awarded to ineligible students.	Yes	Yes
192	FY 16-17 Proviso 11.11.	State	Proviso	The CHE is prohibited from expending any source of funds on the marketing of the SmartState Program.	No	Yes
193	FY 16-17 Proviso 11.12.	State	Proviso	Of the currently appropriated need-based grants funding, no more than \$350,000 shall be used to provide need-based grants to SC resident students enrolled at a public institution of higher education in an established college transition program that serves students with intellectual disabilities. The CHE shall allocate the available funds to eligible institutions on the basis of student need and enrollment in the established college transition programs. All other grants and gift aid for which these students are eligible must be applied first to the cost of attendance prior to using the need-based grant funding. If the cost of attendance for an eligible student is met with all other grants and gift aid, the need-based grant shall not be used. The participating institutions, in cooperation with the CHE, shall track the number of grant recipients and other information determined necessary to evaluate the effectiveness of these grants in assisting students with intellectual disabilities in college transition programs.	Yes	Yes
194	FY 16-17 Proviso 11.13.	State	Proviso	A student may receive a Palmetto Fellows or LIFE scholarship award during the summer, in addition to fall and spring semesters of an academic year, provided continued eligibility requirements are met as of the end of the spring semester. Students must enroll full-time, which for purposes of the summer award will require enrollment in at least twelve hours over the course of the summer. The total summer award per student may not exceed half of the allowable academic year award up to the cost of attendance and must be reimbursed if less than twelve hours for academic credit are not attempted by the student during summer sessions. If awarded in the summer, a student's total award during his or her enrollment may not exceed the amount that would otherwise be provided under current semester limits applied for the scholarship awards. The CHE may provide additional guidelines necessary to ensure uniform implementation.	Yes	Yes

195	FY 16-17 Proviso 11.14.	State	Proviso	When institutions of higher learning request additional other funded full-time equivalent positions, the EBO shall inform the CHE of its decision regarding the request and whether or not sufficient revenues exist to fund the salary and fringe benefits for the positions.	No	No
196	FY 16-17 Proviso 11.15.	State	Proviso	By November 1 of each year, state supported institutions of higher learning must submit to the CHE the total number of out-of-state undergraduate students during the prior fiscal year that received abatement of rates pursuant to Section 59-112-70 as well as the total dollar amount of the abatements received. The report must include the geo-origin of the student, class of the student, comprehensive listing of all financial awards received by the student, number of semesters the student has received the abated rate, as well as the athletic status of the student. The report must also include the calculation method used to determine the abatement amount awarded to students as well as the number of students that received educational fee waivers pursuant to Section 59-101-620 ("A public institution of higher learning may offer educational fee waivers to no more than four percent of the undergraduate student body.")	Yes	Yes
197	FY 16-17 Proviso 11.16.	State	Proviso	By November 1, institutions of higher learning must submit to the Chairman of the Senate Finance Committee, the Chairman of the House Ways and Means Committee, and the CHE, or its successor entity, data on all outstanding institutional debt for their respective institution. Data shall include, but not be limited to, the amount of the initial debt, year in which the debt was incurred, the year in which the debt will be satisfied, the repayment schedule, and the purpose for which the debt was incurred.	No	No
201	FY 16-17 Proviso 20.4.	State	Proviso	The University of South Carolina is directed to allocate \$373,010 to the USC campuses at Lancaster, Salkehatchie, Sumter and Union in order to reduce the per-student funding disparity that exists between each of these campuses. The university shall determine the appropriate enrollment measure to guide the distribution of these additional, recurring state appropriations. The allocation of state funds shall be reported to the CHE, the Chairman of the Senate Finance Committee, and the Chairman of the House Ways and Means Committee.	No	No

202	FY 16-17 Proviso 83.8.	State	Proviso	<p>DEW, in developing the Workforce and Labor Market Information System (WLMIS) improvements required of the Workforce Innovation and Opportunity Act (WIOA) (P.L. 113-128), will require integration of training and employment data for the purposes of improving longitudinal assessment of employment outcomes for the various training providers eligible to receive funding appropriated or authorized by this Act.</p> <p>(C) No later than January 1, 2017, the department must develop a model data-sharing agreement with the Department of Education, CERRA, and the EOC, the Vocational Rehabilitation Department, and the CHE to capture and match data as enumerated in item (B) of this provision. This agreement will ensure collaborative sharing of matched data with each partner agency for the purpose of program assessment and effectiveness in compliance with state and federal laws.</p>	Yes	Yes
203	FY16-17 Proviso 117.63.	State	Proviso	<p>The Office of Attorney General, the Prosecution Coordination Commission, and the Commission on Indigent Defense, in consultation with the South Carolina Student Loan Corporation and the CHE, shall develop and implement a Prosecutors and Defenders Public Service Incentive Program for attorneys employed by the Office of Attorney General, the Prosecution Coordination Commission, the Commission on Indigent Defense, a Circuit Solicitor's Office or a county Public Defender's Office.</p>	Yes	Yes
198	FY 16-17 Proviso 117.72.	State	Proviso	<p>For Fiscal Year 2016-17, state supported institutions of higher learning shall not be required to submit printed reports mandated by Sections 2-47-40, 2-47-50, and 59-103-110 of the 1976 Code, and shall instead only submit the documents electronically. Submission of the plans or reports required by Sections 59-101-350, 59-103-30, 59-103-45(4), and 59-103-160(D) shall be waived for the current fiscal year, except institutions of higher learning must continue to report student pass rates on professional examinations, and data elements otherwise required for the Commission on Higher Education Management Information System. The commission, in consultation with institutions, shall take further action to reduce data reporting burdens as possible.</p>	Yes	Yes
199	FY 16-17 Proviso 117.139.	State	Proviso	<p>The Endowed Chairs Program funds that have been set aside for "Commerce Awards" shall be transferred by the CHE to the Department of Commerce's Applied Research Centers by August 1, 2016.</p>	Yes	Yes

200	FY 16-17 Proviso 118.16.	State	Proviso	<p>The appropriations in this provision are listed in priority order. Item (1) must be funded first and each remaining item must be fully funded before any funds are allocated to the next item. Provided, however, that any individual item may be partially funded in the order in which it appears to the extent that revenues are available.</p> <p>(10) H030 - CHE (a) SREB Program and Assessments \$1 (b) Legal Staffing \$1 (c) Out of State Veteran Tuition Reimbursement - Colleges \$1</p>	Yes	Yes
204	FY 17-18 Proviso 3.5.	State	Proviso	<p>For the current FY, in order to provide longitudinal data, institutions of higher education and technical colleges accepting lottery funds must retain the student unique identifier or SUNS number assigned to students who attended public high schools in SC. This shall not prohibit institutions of higher education or technical colleges from using additional student identifiers.</p>	No	No
205	FY 17-18 Proviso 11.17.	State	Proviso	<p>By December 1 each year, the CHE is directed to provide a report to the Chairman of the Senate Finance Committee and the Chairman of the House Ways and Means Committee on tuition and required fee trends submitted to the commission by the state's public colleges and universities. The baseline of the report must be the most recent fall semester compared to the previous five fall semesters. The commission shall also provide comparable data and trends for and among SREB states for the same period of time. In addition, for the same time periods noted above, the commission shall also calculate in the report the level of recurring base state operating funding received by each college and university as measured on an in-state student basis as well as the average of such funding provided in each SREB state.</p>	Yes	Yes
206	FY 17-18 Proviso 11.18.	State	Proviso	<p>The requirements of Section 59-104-220 of the 1976 Code pertaining to the Governor's Professor of the Year Award shall be suspended for FY 17-18.</p>	No	No

207	FY 17-18 Proviso 11.22.	State	Proviso	Of the funds appropriated to the CHE, on or before December 31, 2017, the Research Centers of Excellence Review Board shall submit to the President Pro Tempore of the Senate, the Speaker of the House of Representatives, the Chairman of the Senate Finance Committee, the Chairman of the House Ways and Means Committee, and the Governor, written recommendations regarding a plan to sunset the SmartState Board and how best to transition some of its responsibilities to an appropriate entity of state government for any continuing administrative program management, including a minimum budget necessary for administration, as well as for oversight and/or accountability responsibilities related to awards made on or before August 1, 2017, that may remain after the SmartState Board sunsets.	No	No
208	FY 17-18 Proviso 117.72	State	Proviso	State supported institutions of higher learning do not need to submit printed reports to the CHE, and shall only submit the documents electronically. Submission of reports is waved for FY 17-18 except intuitions of higher learning must still submit student pass rates on professional exams, and data elements otherwise required for the CHE management information system. The CHE shall take further action to reduce data reporting burdens.	Yes	Yes
209	OMB Circular A-21	Federal		Sets forth the rules governing eligibility and calculation of costs for the Gear Up grant.	Yes	Yes
210	Title IV, Part A, Subpart 2, Chapter 2	Federal		Authorizes the establishment and list requirements of the Gaining Early Awareness and Readiness for Undergraduate Programs (Gear Up).	Yes	Yes
211	Elementary and Secondary Education Act, as amended, Title II, Part A	Federal		Provides the authorization of appropriations for ITQ, and covers topics such as the state use of funds, subgrants to local educational agencies and eligible partnerships, and accountability.	Yes	Yes
212	2 CFR 200	Federal	Statute	Describes cost principles and procedures for developing cost allocation plans and indirect cost rates for grants. Contains general provisions, pre-award requirements, post-award requirements, cost principles and audit requirements.	Yes	Yes
213	34 CFR 75	Federal	Statute	Provides guidance for the direct grant program of Gear Up. Guidance includes how to apply for a grant, how grants are made, what conditions must be met by a Grantee, and the administrative responsibilities of a Grantee.	Yes	Yes

214	34 CFR 76	Federal	Statute	Provides guidance for the state-administered program of ITQ. Guidance includes how to apply for a grant, how grants are made, how to apply to the state for subgrant, how a subgrant is made to an applicant, what conditions must be met and the administrative responsibilities of the state and its subgrantees.	Yes	Yes
215	34 CFR 77	Federal	Statute	Provides definitions that apply to department regulations for the Gear Up and ITQ grants.	Yes	Yes
216	34 CFR 79	Federal	Statute	Regulates the intergovernmental review of U.S. Department of education programs and activities to ensure state and local governments have an opportunity to review federal financial assistance.	Yes	Yes
217	34 CFR 80	Federal	Statute	Establishes uniform administrative rules for grants.	Yes	Yes
218	34 CFR 81	Federal	Statute	General Education Provisions Act - Enforcement. These regulations govern the enforcement of legal requirements under the Gear Up and ITQ programs.	Yes	Yes
219	34 CFR 82	Federal	Statute	New Restrictions on Lobbying. Provides regulations on restricted activity by employees, activity by non-employees, and penalties and enforcement for the Gear Up and ITQ grants.	Yes	Yes
220	34 CFR 84	Federal	Statute	Governmentwide Requirements for Drug-Free Workplace. Provides guidance on a drug-free workplace due to the CHE being a recipient of the Gear Up and Itq grants from the U.S. Department of Education.	Yes	Yes
221	34 CFR 99	Federal	Statute	Family Educational Rights and Privacy. These regulation set out requirements for grants such as ITQ for the protection of privacy of parents and students.	Yes	Yes
222	34 CFR Part 694	Federal	Statute	Provides specific requirements and rules on the Gear Up grant.	Yes	Yes
223	38 CFR 21.4150	Federal	Statute	Grants authorization of each state to create or designate a state agency as the State Approving Agency (SAA).	Yes	Yes

224	38 CFR 21.4151	Federal	Statute	States the responsibilities of the SAA program.	Yes	Yes
225	38 CFR 21.4153	Federal	Statute	Provides for the type of expenses that will be reimbursed and nonreimbursed under the contract with the SAA. Also requires the submission of an operating plan, and provides contract compliance and dispute requirements.	Yes	Yes
226	38 CFR 21.4154	Federal	Statute	Prescribes the requirements of the SAA in reporting their activities and the contents of the report.	Yes	Yes
227	38 CFR 21.4155	Federal	Statute	Describes the annual evaluations required for the SAA, the development of a training curriculum, and the development of qualification and performance standards for employees of the SAA.	Yes	Yes

Agency Name: Commission on Higher Education

Fiscal Year 2016-2017
Accountability Report

Agency Code: H030 Section: 011

Program Template

Program/Title	Purpose	FY 2016-17 Expenditures (Actual)				FY 2017-18 Expenditures (Projected)				Associated Objective(s)
		General	Other	Federal	TOTAL	General	Other	Federal	TOTAL	
I. Administration	Provides the primary funding for the staffing and operational support of the agency to carry over the functions of the Academic Affairs Division, Student Services Division and Fiscal Affairs Division.	\$ 1,841,935	\$ -	\$ -	\$ 1,841,935	\$ 1,936,347			\$ 1,936,347	All
II. Other Agencies and Entities	Provides funding and authorization for the Academic Endowment, African American Loan Program, EPSCoR, Greenville Technical College - University Center, Performance Funding, PASCAL, and the University Center of Greenville.	\$ 3,682,304	\$ 2,728,342	\$ -	\$ 6,410,646	\$ 3,682,304	\$ 3,186,577		\$ 6,868,881	2.1.3
III. Licensing	Provides administrative funds and authorization for licensing nonpublic postsecondary institutions.	\$ 47,972	\$ 243,218	\$ -	\$ 291,190	\$ 47,972	\$ 301,491		\$ 349,463	1.2.1, 1.2.2, 1.2.3
IV. State Approving Section	Provides authorization for the State Approving Agency which is responsible ofr approving and supervising education for GI Bill participants.	\$ -	\$ -	\$ 264,962	\$ 264,962			\$ 268,141	\$ 268,141	1.2.3
V. CHE Grant & Other Higher Educ Collaboration	Provides funding and authorization for the College Goal Sunday, EEDA, Gear Up grant, ITQ grant, and SmartState.	\$ 1,136,994	\$ 456,455	\$ 3,343,982	\$ 4,937,431	\$ 1,838,502	\$ 556,595	\$ 2,787,779	\$ 5,182,876	2.1.3, 3.1.5
VI. Employee Benefits	Provides funding and authorization for the fringe benefits such as retirement contributions, health insurance, social security and other related expenditures for employees.	\$ 396,502	\$ 62,544	\$ 46,871	\$ 505,917	\$ 436,721	\$ 64,420	\$ 48,278	\$ 549,418	All
VII. Scholarships & Assist	Provides funding for the Educational Endowment, Need-Based Grants, National Guard, and SREB programs.	\$ 28,382,718	\$ -	\$ -	\$ 28,382,718	\$ 28,776,395			\$ 28,776,395	1.1.4, 3.1.2
All Other Items	Provides funding for the lottery and EIA programs. These include Palmetto Fellows, LIFE, HOPE, LTAP, Need-Based Grants, SREB, technology pass-through funds, Teacher Recruitment, Centers of Excellence, PASCAL, HEEEP, and lottery administration.	\$ 50,000	\$ 306,584,307	\$ -	\$ 306,634,307		\$ 341,588,535		\$ 341,588,535	1.1.4, 2.1.3, 3.1.2, 3.1.3, 3.1.4

Agency Name: Commission on Higher Education

Fiscal Year 2016-2017
Accountability Report

Agency Code: H030 Section: 11

Customer Template

Divisions or Major Programs	Description	Service/Product Provided to Customers	Customer Segments	<i>Specify only for the following Segments:</i> (1) Industry: Name; (2) Professional Organization: Name; (3) Public: Demographics.
Academic Affairs Division	The Academic Affairs Division is primarily responsible for academic program review and approval, interstate contract programs, licensing nonpublic institution operations, grants program management, research and innovation management, and academic policies development.	Approve new academic degree programs or changes to existing programs at public institutions, promoting the goals of excellence, affordability, and access in higher education.	Executive Branch/State Agencies	
Academic Affairs Division	The Academic Affairs Division is primarily responsible for academic program review and approval, interstate contract programs, licensing nonpublic institution operations, grants program management, research and innovation management, and academic policies development.	Review the productivity of academic programs from associate through doctorate levels at SC institutions, promoting the goal of excellence in higher education.	Executive Branch/State Agencies	State Agencies including the 33 public institutions. <u>Public:</u> state policymakers, and higher education students.
Academic Affairs Division	The Academic Affairs Division is primarily responsible for academic program review and approval, interstate contract programs, licensing nonpublic institution operations, grants program management, research and innovation management, and academic policies development.	Manage interstate contracts, promoting the goal of access to regionally based low-enrollment degree programs including optometry and veterinary science through the South Regional Education Board (SREB).	General Public	<u>Public:</u> SC residents enrolled in SREB contract programs.
Academic Affairs Division	The Academic Affairs Division is primarily responsible for academic program review and approval, interstate contract programs, licensing nonpublic institution operations, grants program management, research and innovation management, and academic policies development.	Manage the Academic Common Market, a regionally-based interstate reciprocity program, promoting the goal of access in higher education through in-state tuition rates for unique, out-of-state degree programs through SREB.	General Public	<u>Public:</u> students from participating states (TX, OK, AR, LA, MS, AL, GA, FL, SC, KY, TN, WV, VA, MD, DE)
Academic Affairs Division	The Academic Affairs Division is primarily responsible for academic program review and approval, interstate contract programs, licensing nonpublic institution operations, grants program management, research and innovation management, and academic policies development.	Manage nationally-based interstate reciprocity program, SARA (State Authorization Reciprocity Agreement), to provide SC students access to specific course offerings out-of-state, and enabling SC institutions opportunity to provide course offerings to out-of-state students, both at significant cost savings, promoting the goals of access and affordability in higher education.	General Public	<u>Public:</u> In-state and out-of-state students and higher education institutions.

Academic Affairs Division	The Academic Affairs Division is primarily responsible for academic program review and approval, interstate contract programs, licensing nonpublic institution operations, grants program management, research and innovation management, and academic policies development.	Review applications for licensure, amendments to add programs or locations, and agent permits, promoting excellence by ensuring licensed institutions meet minimum standards required by law and regulations.	General Public	<u>Public:</u> Institutions of higher education and vocational training schools.
Academic Affairs Division	The Academic Affairs Division is primarily responsible for academic program review and approval, interstate contract programs, licensing nonpublic institution operations, grants program management, research and innovation management, and academic policies development.	Manage the repository of academic records from closed institutions, providing copies of official transcripts and employment verifications,	General Public	<u>Public:</u> Students who attended licensed institutions that closed; third-part verification agencies and employer personnel offices.
Academic Affairs Division	The Academic Affairs Division is primarily responsible for academic program review and approval, interstate contract programs, licensing nonpublic institution operations, grants program management, research and innovation management, and academic policies development.	Provide pertinent information about higher education and licensed institutions to students and parents, promoting the goal of excellence in higher education.	General Public	<u>Public:</u> Students, potential students, parents, employers.
Academic Affairs Division	The Academic Affairs Division is primarily responsible for academic program review and approval, interstate contract programs, licensing nonpublic institution operations, grants program management, research and innovation management, and academic policies development.	Respond to student complaints against SC postsecondary institutions, promoting the goal of excellence in higher education.	General Public	Students attending licensed and exempt institutions.
Academic Affairs Division	The Academic Affairs Division is primarily responsible for academic program review and approval, interstate contract programs, licensing nonpublic institution operations, grants program management, research and innovation management, and academic policies development.	Oversee the SmartState® Program, a research and innovation initiative to enhance statewide economic and workforce development, promoting the goal of excellence in higher education.	General Public	<u>Public:</u> Students, researchers, underserved populations, entrepreneurs, citizens, state policymakers and agencies
Academic Affairs Division	The Academic Affairs Division is primarily responsible for academic program review and approval, interstate contract programs, licensing nonpublic institution operations, grants program management, research and innovation management, and academic policies development.	Approve teacher education programs, and administer competitive grants process to establish and monitor state-of-the-art resource centers to help improve teacher education, promoting the goals of excellence and access in higher education.	General Public	<u>Public:</u> educator preparation programs and their teacher candidates

Academic Affairs Division	The Academic Affairs Division is primarily responsible for academic program review and approval, interstate contract programs, licensing nonpublic institution operations, grants program management, research and innovation management, and academic policies development.	Administer competitive grants program to award federal funds under Title II that provide support for student academic achievement, promoting the goals of access and excellence in higher education..	General Public	<u>Public:</u> educator preparation programs
Academic Affairs Division	The Academic Affairs Division is primarily responsible for academic program review and approval, interstate contract programs, licensing nonpublic institution operations, grants program management, research and innovation management, and academic policies development.	Coordinate statewide system of economic development for South Carolina residents from PK-12 education to postsecondary education to workforce development (P-20W).	General Public	<u>Public:</u> Related SC legislative and government agencies
Academic Affairs Division	The Academic Affairs Division is primarily responsible for academic program review and approval, interstate contract programs, licensing nonpublic institution operations, grants program management, research and innovation management, and academic policies development.	Develop, manage, publish and report on academic policies including program approval and productivity, transferability, dual enrollment, remediation, mission statements, and college course prerequisites, promoting goals of access, affordability, and excellence in higher education.	Executive Branch/State Agencies	<u>Public:</u> institutions, state policymakers, students, and parents
Academic Affairs Division	The Academic Affairs Division is primarily responsible for academic program review and approval, interstate contract programs, licensing nonpublic institution operations, grants program management, research and innovation management, and academic policies development.	Provide pertinent information about higher education and licensed institutions to parents and students, promoting the goals of access, excellence and affordability.	General Public	<u>Public:</u> Students, potential students, parents, employers.
Academic Affairs Division	The Academic Affairs Division is primarily responsible for academic program review and approval, interstate contract programs, licensing nonpublic institution operations, grants program management, research and innovation management, and academic policies development.	Approve and review academic programs for scholarship enhancement eligibility, promoting the goal of affordability in higher education.	Executive Branch/State Agencies	SC public and independent institutions of higher learning and students.
Student Affairs Division	This division is primarily responsible for providing administrative oversight and coordination of student financial aid programs to provide statewide equity of awards and consistency of selection criteria.	Promotes Agency's goals of access and affordability by providing essential information and financial aid literacy/assistance about eligibility and renewal requirements, appeals, student concerns/complaints regarding state scholarships and grants.	General Public	<u>Public:</u> SC residents (traditional and non-traditional students), middle and high school students, SC families including first generation students and low-income families

Student Affairs Division	This division is primarily responsible for providing administrative oversight and coordination of student financial aid programs to provide statewide equity of awards and consistency of selection criteria.	Promotes Agency's goals of access and affordability by assisting SC residents achieve their educational goals through administration of state financial aid programs.	General Public	<u>Public:</u> SC families, middle and high school, adult, intellectually disabled, first generation and low-income students. Administration of state financial aid scholarships and grants per legislation (Legislative Branch)
Student Affairs Division	This division is primarily responsible for providing administrative oversight and coordination of student financial aid programs to provide statewide equity of awards and consistency of selection criteria.	Promotes Agency's goals of access and affordability through compliance with state statutes and regulations for state scholarships and grants.	Legislative Branch	<u>Legislative Branch:</u> promulgate regulation and ensure compliance with statutes and regulation(s). <u>Public:</u> SC eligible public and independent 2-and 4-year colleges and universities, public, independent, charter and home school high schools
Student Affairs Division	This division is primarily responsible for providing administrative oversight and coordination of student financial aid programs to provide statewide equity of awards and consistency of selection criteria.	Promotes Agency's goals of access, affordability and excellence through assurance of quality education and training programs for veterans/eligible persons enrolled in educational/job training programs.	General Public	<u>Public:</u> Veterans, covered individuals and families, designated as the State Approving Agency by the Governor's Office (Executive Branch)
Student Affairs Division	This division is primarily responsible for providing administrative oversight and coordination of student financial aid programs to provide statewide equity of awards and consistency of selection criteria.	Promotes Agency's goals of access and affordability through administration of the SC National Guard College Assistance Program (SC NG CAP) in coordination with the SC National Air/Army Guard and higher Education institutions.	General Public	<u>Public:</u> SC Air/Army National Guard members, South Carolina Military Department (Education/recruitment- SC National Guard)
Student Affairs Division	This division is primarily responsible for providing administrative oversight and coordination of student financial aid programs to provide statewide equity of awards and consistency of selection criteria.	Promotes Agency's goals of access, affordability and excellence by increasing the number of SC low-income middle and high school students who are prepared to enter and succeed in postsecondary education.	School Districts	<u>School Districts:</u> School counselors, school/district administrators in rural and critically challenged schools, students, SC families
Student Affairs Division	This division is primarily responsible for providing administrative oversight and coordination of student financial aid programs to provide statewide equity of awards and consistency of selection criteria.	Promotes the Agency's goals of access and affordability through statewide coordination of three statewide college access programs: 1) College Application events; 2) College Goal SC; and 3) College Decision Day.	General Public	<u>Public:</u> Students, families, school counselors, school districts, school and community organizations, higher education institutions
Student Affairs Division	This division is primarily responsible for providing administrative oversight and coordination of student financial aid programs to provide statewide equity of awards and consistency of selection criteria.	Promotes Agency's goals of access and affordability by promulgating residency regulations, providing residency information to students and families, and providing regulatory guidance to higher education institutions in compliance with state statutes.	General Public	<u>Public:</u> Students, families, higher education institutions, legislative branch

Student Affairs Division	This division is primarily responsible for providing administrative oversight and coordination of student financial aid programs to provide statewide equity of awards and consistency of selection criteria.	Promotes Agency's goals of access and affordability through administration of SC Teachers Loan Program, in coordination with the SC Student Loan Corporation.	School Districts	School Districts: Rural and critically challenged schools, traditional, non-traditional, and minority students enrolled in teacher education programs at public/independent institutions
Fiscal Affairs Division	This division is primarily responsible for providing operational support to the agency, managing higher education data (CHEMIS), reviewing capital project requests, and managing the finances of the agency to include all lottery funds.	Providing higher education data collection and reporting through CHEMIS. Agency goals of Access, Affordability and Excellence are supported by this service.	Executive Branch/State Agencies	
Fiscal Affairs Division	This division is primarily responsible for providing operational support to the agency, managing higher education data (CHEMIS), reviewing capital project requests, and managing the finances of the agency to include all lottery funds.	Auditing lottery scholarships and managing lottery funds. Agency goal of Affordability is supported by this service.	Legislative Branch	Customer segments include Executive Branch/State Agencies and General Public. <u>General Public</u> : College students attending and high schools students potentially attending SC colleges and universities.
Fiscal Affairs Division	This division is primarily responsible for providing operational support to the agency, managing higher education data (CHEMIS), reviewing capital project requests, and managing the finances of the agency to include all lottery funds.	Reviewing permanent improvement projects and leases. Agency goals of Access, Affordability, and Excellence are supported by this service.	Executive Branch/State Agencies	
Fiscal Affairs Division	This division is primarily responsible for providing operational support to the agency, managing higher education data (CHEMIS), reviewing capital project requests, and managing the finances of the agency to include all lottery funds.	Managing the agency's budget, and the agency's accounts payable and accounts receivable functions. Agency goal of Excellence is supported by this service.	Executive Branch/State Agencies	
Fiscal Affairs Division	This division is primarily responsible for providing operational support to the agency, managing higher education data (CHEMIS), reviewing capital project requests, and managing the finances of the agency to include all lottery funds.	Providing data analysis on higher education. Agency goals of Access, Affordability, and Excellence are supported by this service.	Legislative Branch	Customer segments include Executive Branch/State Agencies and General Public. <u>General Public</u> : Students and parents in SC.
Fiscal Affairs Division	This division is primarily responsible for providing operational support to the agency, managing higher education data (CHEMIS), reviewing capital project requests, and managing the finances of the agency to include all lottery funds.	Preparing and providing reports as required by state and federal laws. Agency goals of Access, Affordability, and Excellence are supported by this service.	Executive Branch/State Agencies	Customer segments include General Public. <u>General Public</u> : Citizens of SC.

Fiscal Affairs Division

This division is primarily responsible for providing operational support to the agency, managing higher education data (CHEMIS), reviewing capital project requests, and managing the finances of the agency to include all lottery funds.

Monitoring legislative activity. Agency goals of Access, Affordability, and Excellence are supported by this service. Executive Branch/State Agencies

Agency Name: Commission on Higher Education

Fiscal Year 2016-2017
Accountability Report

Agency Code: H030 **Section:** 011

Partner Template

Name of Partner Entity	Type of Partner Entity	Description of Partnership	Associated Objective(s)
Public Institutions	Higher Education Institute	The Academic Affairs, Student Affairs, Fiscal Affairs and External Affairs divisions work closely with each college or university through the review of academic programs, maintenance of funding distribution, approval of capital projects, coordination of student financial aid, and increasing public awareness of higher education. CHE staff works with multiple institutions to serve as host sites for FAFSA completion projects and provide college readiness activities.	1.1.1, 1.1.2, 1.1.4, 2.1.1, 2.1.2, 2.1.3, 2.1.4, 2.1.5
Technical Colleges and Technical College System	Higher Education Institute	The Academic Affairs, Student Affairs, Fiscal Affairs and External Affairs divisions work closely with each college or university through the review of academic programs, maintenance of funding distribution, approval of capital projects, coordination of student financial aid, and increasing public awareness of higher education. CHE staff works with multiple institutions to serve as host sites for FAFSA completion projects and provide college readiness activities.	1.1.4, 2.1.1, 2.1.2, 2.1.3, 2.1.4, 3.1.1, 3.1.2, 3.1.4, 3.1.5
Independent Colleges	Higher Education Institute	CHE staff works with SC independent institutions to serve as host sites for FAFSA completion projects. Staff also works with independent colleges on coordination of student financial aid, and increasing public awareness of higher education.	1.1.4, 2.1.3

SC Department of Education	State Government	CHE works with the SC Department of Education with areas such as the teaching profession, data collection and teacher studies, disseminate information to SC school counselors regarding College Access Programs, provide instructors for CHE sponsored professional development, and collaborate concerning transcript requirements for state scholarships. CHE licensing staff works with the Department to ensure that graduates of licensed institutions offering education programs will be adequately prepared for certification. CHE licensing staff works with the Department to ensure that graduates of licensed institutions offering education programs will be adequately prepared for certification.	2.1.3, 2.1.4, 3.1.1, 3.1.3, 3.1.4, 3.1.5
SC Education Oversight Committee	State Government	CHE serves as a key collaborative partner with the Education Oversight Committee (EOC) which has an overall goal of improving the K-12 and post secondary educational systems in South Carolina. EOC provides grant funding and oversight through the CHE to the Center of Educator Recruitment and Retention (CERRA) and the SC Centers of (Teaching) Excellence. Both programs focus on the development of strategic partnerships, promote excellence in educator preparation, and connect viable solutions based on best practices to improve identified statewide needs. In addition, CHE provides current data and research to EOC policymakers, and members of CHE staff serve on EOC advisory boards.	2.1.3, 3.1.3, 3.1.4, 3.1.5
Southern Regional Education Board (SREB)	Professional Association	SREB works with South Carolina policymakers, colleges and schools to help them improve college affordability. SREB also provide the web-based platform for CHE sponsored professional development.	2.1.3
SC Department of Commerce	State Government	The Academic Affairs division work with the SC Department of Commerce through the Endowed Chairs Program.	3.1.5
SC Department of Employment and Workforce	State Government	CHE works with the SC Department of Employment and Workforce through data sharing as it relates to higher education and job skills.	3.1.5

Higher Education Tuition Grants Commission	State Government	CHE, through the Fiscal Affairs division, works with the Higher Education Tuition Grants Commission for the Need Based Grants program. CHE staff coordinates with SCTG staff to provide financial aid presentations to families and independent college financial aid/residency officers. Tuition Grants staff developed in-house FAFSA completion process for SC GEAR UP Program.	2.1.3
SC Chamber of Commerce	Professional Association	The SC Chamber of Commerce worked with CHE in the Gaining Awareness and Readiness for Undergraduate Programs (GEAR UP) which is located in the Student Services Division. The Chamber of Commerce partners with CHE and the GEAR UP Program to provide in-kind match for the GEAR UP grant. During the duration of the grant, SC Chamber of Commerce helped generate and record a total of \$28,033,828 in in-kind dollar value, provided 100 partnerships and 50 approved volunteers and guest speakers, and sponsored GEAR UP students during the Chamber's Business Week Event.	2.1.3
South Carolina Association of Student Financial Aid Administrators (SCASFAA)	Professional Association	CHE staff provide trainings at annual conference, SCASFAA Advisory Committee assists CHE staff with policy decisions regarding state financial aid programs and residency. SCASFAA provides volunteers for FAFSA completion programs.	1.1.4, 2.1.3
Carolinas Association of Collegiate Registrars & Admissions Officers (CACRAO)	Professional Association	CHE staff provide trainings at annual workshops. CACRAO provides volunteers for College Access Programs.	1.1.4, 2.1.3
South Carolina Independent School Association	K-12 Education Institute	CHE staff works with K-12 Associations to disseminate scholarship information to all high schools within the associations.	2.1.3
South Carolina Association of Independent Home Schools	K-12 Education Institute	CHE staff works with K-12 Associations to disseminate scholarship information to all high schools within the associations.	2.1.3
South Carolina Association of Christian Schools	K-12 Education Institute	CHE staff works with K-12 Associations to disseminate scholarship information to all high schools within the associations.	2.1.3
SC Department of Social Services	State Government	CHE staff works with DSS to administer the SC Need-Based Foster Care Grant and works with DSS case-workers to share information regarding the programs with eligible students.	2.1.3

SC Public and Independent High Schools	K-12 Education Institute	CHE staff works with school counselors to provide information and administer statewide college access programs. CHE staff also collaborates with school counselors to submit Palmetto Fellows applications. 15 school districts across the state of SC partner with CHE in the GEAR UP program which is located in the Student Services division to provide college readiness services to over 3,000 students.	2.1.3
Dayco Products Inc.	Private Business Organization	CHE partners with Dayco Product Inc. to offer scholarship opportunities for Dayco employees and their dependents from the Williston area.	2.1.3
American Council on Education (ACE)	Non-Governmental Organization	CHE partners with ACE to develop materials, tools and best practices for College Application Month events.	2.1.3
Governor's School of Science and Mathematics	K-12 Education Institute	The Governor's School of Science and Mathematics collaborates with GEAR UP in academiic preparation and the college application process.	2.1.3
SC Air and Army National Guard	Federal Government	Per SC Code of Laws, Section 59-114-10 Et. Seq, CHE in coordination with the SC National Guard (Air and Army) administers the National Guard College Assistance Program (CAP) to provide financial aid assistance to eligible SCNG members attending SC colleges and universities.	2.1.3
National Association of State Administrators and Supervisors of Private Schools (NASASPS)	Professional Association	CHE Licensing staff participate in NASASPS in order to share best practices. One licensing staff member currently serves as president of the association.	1.2.1, 1.2.2
National Council for State Authorization Reciprocity Agreements (NC-SARA)	Non-Governmental Organization	CHE serves as the portal agency for SARA activities in SC. SC-SARA staff work closely with the national organization staff to ensure proper approval and oversight of participating institutions.	1.2.1, 1.2.2

SC Department of Labor, Licensing, and Regulation	State Government	CHE Licensing staff works with various licensure board to ensure programs at licensed institutions are adequately preparing graduates for licensure eligibility. The Massage/Bodywork Panel designates massage therapy program approval to the CHE. Academic affairs staff serve as liaison to the Board of Nursing.	1.2.1, 1.2.2
SC Department of Health and Human Services	State Government	CHE Licensing area shares oversight of nurse aide training programs with SCDHHS and serves on its Nurse Aide Training Program Advisory Comm.	1.2.1, 1.2.2
SC Office of the Lt. Governor	State Government	A member of the Academic Affairs staff serves on the advisory committee for the Geriatric Loan Forgiveness Program.	2.1.3
Various institutional accrediting agencies	Non-Governmental Organization	CHE licensing staff communicate frequently with accrediting agency staff regarding institutions for which they have corresponding oversight.	1.2.1, 1.2.2
South Carolina Local Veteran Employment (SC LVER)	State Government	SAA works with the South Carolina Local Veteran Employment Representative to assist veterans and eligible persons to learn about the employment opportunities in the state and jobs approved for veterans education and training.	2.1.3
Marine Corps Air Station (MCAS)	Federal Government	Throughout the year, the SAA conducts transition and separation briefings to veterans regarding Post/11 GI Bill education benefits.	2.1.3
South Carolina Association for Veteran Administrators (SCAVA)	State Government	SAA and the VA conduct two training sessions for the VA School Certifying Officials at the colleges, universities and schools for the purpose of instructing officials about the certification process for veterans and those eligible for GI Bill benefits.	1.2.3, 2.1.3
National Association of State Approving Agencies (NASAA)	State Government	SAA participates in two training sessions per year with the National Association of State Approving Agencies.	1.2.3, 2.1.3
SC Ready	State Government	Through collaborative efforts, the SAA has created a partnership with SC Ready to assist SC employers in the approval process for veterans education and training (GI Bill) and offer on-the-job training and apprenticeships to SC veterans.	1.2.3, 2.1.3

US Department of Labor: Office of Apprenticeship	State Government	Through collaborative efforts, the SAA has created a partnership with the U.S. Department of Labor-Office of Apprenticeship to assist employers in the approval process to offer veterans education and training (GI Bill) in workplace on-the-job training and apprenticeships.	1.2.3, 2.1.3
U.S. Department of Education	Federal Government	CHE licensing staff communicates frequently with USDE staff regarding institutions for which they have corresponding oversight.	1.2.1, 1.2.2
SC Program for the Recruitment and Retention of Minority Teachers (SC-PRRMT)	State Government	CHE reviews reports, monitors program and approves budget requests for SC-PRRMT.	2.1.3, 3.1.3, 3.1.4
SC Student Loan Corporation	Non-Governmental Organization	CHE reviews reports and approves administrative budget requests for SC Teachers Loan Program	2.1.3
Center for Educator Recruitment, Retention, and Advancement	State Government	CHE reviews reports and approves budget requests for CERRA. In addition, the Director of Academic Affairs serves on the CERRA Board of Directors.	2.1.3, 3.1.5
SC Education Deans Association	Professional Association	CHE attends meetings to provide updates on state and federal grants as well as changes in policy and procedure.	3.1.3, 3.1.5
State Higher Education Executive Officers Association (SHEEO)	Professional Association	The Academic Affairs Division partners with SHEEO and a SC HBCU to recruit minority males to the teaching profession.	2.1.3

Agency Name: Commission on Higher Education

Fiscal Year 2016-2017
Accountability Report

Agency Code: H030 Section: 011

Report Template

Item	Report Name	Name of Entity Requesting the Report	Type of Entity	Reporting Frequency	Submission Date (MM/DD/YYYY)	Summary of Information Requested in the Report	Method to Access the Report
1	Reporting Package - Master Checklist	Office of Comptroller General	State	Annually	July 7, 2016	The Master Reporting Package Checklist requires the response to questions which will determine if subsequent reporting packages will be due. Questions revolve around cash and investments, grants, other receivables, prepaid expenses, capital assets, operating leases, accounts payable, litigation, other payroll related liabilities, interfund payables and receivables, fund balances, etc.	Request from Agency or Entity Requesting the Report
2	Reporting Package - Litigation Reporting Package	Office of Comptroller General	State	Annually	July 21, 2016	This reporting package provides information relating to situations arising or changin during the year and subsequent to year-end where the agency has consulted private attorney's for legal advice or representation.	Request from Agency or Entity Requesting the Report
3	Procurement Report	State Fiscal Accountability Authority - Materials Management Office	State	Quarterly	July 25, 2016	Information on sole source, emergency, trade-in, and illegal procurement data, as well as contracts awarded due to preference applications and the ten percent rule for the previous quarter is requested.	Request from Agency or Entity Requesting the Report
4	Minority Spending Report	Department of Administration, Division of Small and Minority Business Contracting and Certification	State	Quarterly	July 26, 2016	Report purchases made with a minority vendor.	Request from Agency or Entity Requesting the Report
5	Recycle Report	Department of Health and Environment Control	State	Annually	August 10, 2016	Report items recycled throughout the year. Cardboard, hard plastic, and plastic films is reported to the agency by Prison Industries. Cans and batteries are weighed and calculated by the agency. Section 44-96-140(B) states that no later than September 15th of each year, each state agency shall submit to DHEC a report detailing its source separation and recycling program.	Request from Agency or Entity Requesting the Report
6	Reporting Package - Other Receivables	Office of Comptroller General	State	Annually	August 12, 2016	This reporting package provides a means to adjust what is recorded in SCEIS as receivables to actual receivables that have not been/will not be reported as taxes, grants and contributions, loan receivables, interfund receivables, or SNAP receivables that are reported separately.	Request from Agency or Entity Requesting the Report

7	Single Audit Schedule of Federal Expenditures	Office of State Auditor	State	Annually	August 19, 2016	Proviso 117.99 states the following: To ensure timely completion of the of the Statewide Single Audit, state agencies which do not receive a separate audit of federal expenditures, must submit to the Office of the State Auditor a schedule of federal program expenditures in a format prescribed by the Office of the State Auditor, no later than August fifteenth of each year.	Request from Agency or Entity Requesting the Report
8	Reporting Package - Fund Balances and Net Position (Net Asset)	Office of Comptroller General	State	Annually	August 24, 2016	This reporting package is used to gather the information regarding constraints on the use of revenue sources and resulting fund balance.	Request from Agency or Entity Requesting the Report
9	Reporting Package - Interfund Payables	Office of Comptroller General	State	Annually	August 25, 2016	This reporting package is used to gather the information needed for the recognition and reporting of amounts owed from one agency to another or from one accounting fund within the agency to another required by GAAP. The amounts to be reported should not include Loan payments, Medicaid payments, distribution to grantees, or amounts owed to vendors.	Request from Agency or Entity Requesting the Report
10	Reporting Package - Operating Lease	Office of Comptroller General	State	Annually	August 26, 2016	This reporting package discloses the terms of noncancelable operating leases, and presents the total rental expenditures for the current year, future minimum rental payments for each of the five succeeding fiscal years and in five year increments thereafter. Any payment for contingent rentals are required to be disclosed separately. The required forms include: Operating Leases Summary Form - Lessee, Operating Leases Future Minimum Payment Schedule, and the Operating Leases Summary Form - Lessor.	Request from Agency or Entity Requesting the Report
11	Reporting Package - Accounts Payable Reporting Package	Office of Comptroller General	State	Annually	September 7, 2016	This reporting package requires the submission of the Accounts Payable Summary Form. The form focuses on accounts payable, accrued expenses (non-payroll related), and contracts retentions.	Request from Agency or Entity Requesting the Report
12	Reporting Package - Grants and Contribution Revenue	Office of Comptroller General	State	Annually	September 9, 2016	This reporting package requires the submission of the following forms: Grants Activity Form, Grants Receivables and Deferred Revenue Summary Form, and the Contributions Receivables and Deferred Revenue Summary Form. Information provided includes SEFA, grants receivable and deferred revenue at year-end, and receivables and deferred revenue at year-end arising from contribution transactions.	Request from Agency or Entity Requesting the Report
13	Annual Accountability Report	Executive Budget Office	State	Annually	September 15, 2016	The Accountability Report is intended to report an agency's performance and to provide a discussion of prior year expenditures and associates expenditures with prospective goals, strategies and objectives.	Request from Agency or Entity Requesting the Report

14	Reporting Package - Capital Assets Reporting Package	Office of Comptroller General	State	Annually	September 16, 2016	This reporting package requires the submission of the following forms: Capital Assets Questionnaire, Adjustments and Errors in SCEIS Form, Non-Live Agency Capital Assets Summary Form, Capital Assets Intra-State Transfers Reconciliation Form, and Reconciliation of SCEIS Asset History Report to General Ledger Activity. This package helps ensure the completeness and accuracy of the information reported in SCEIS and to collect certain information related to capital assets which are not captured in the Asset Module or the SCEIS General Ledger.	Request from Agency or Entity Requesting the Report
15	Licensing and Certification - Report	Department of Veterans Affairs Central Office/Education Liaison Representative	Federal	Annually	September 30, 2016	This report consist of a review/verification of the existing licensing and certification (L/C) approvals. Upon review and verification of the L/C, the SAA will generate a report and submit the update to the VA so that the cost /revision reflects the changes for reimbursement for VA benefits.	This report can be accessed via the SAA hardcopy file and also the Department of Veterans Affairs Education Liaison Reppresentative.
16	Agency Budget Request	Executive Budget Office	State	Annually	September 30, 2016	Agency budget request of state funds, FTE changes, proviso changes, and authorization changes is due every year.	Request from Agency or Entity Requesting the Report
17	EIA Program Report and Budget Request for the Centers of Excellence	SC Education Oversight Committee	State	Annually	September 30, 2016	Summary of outputs of the approved Centers of Excellence, expenditures, and future budget requests	Request from Agency of Entity Requesting the Report
18	Information Technology and Information Security Plans	Department of Administration	State	Annually	October 1, 2016	This report is the information technology plan and information security plan as required by Proviso 117.114.	Request from Agency or Entity Requesting the Report
19	State Approving Agency Self Evaluation	Department of Veterans Affairs Central Office/Education Liaison Representative	Federal	Annually	October 18, 2016	The SAA Self Evaluation Report is a performance measure of the contractual agreement between the VA and the SAA. The SAA rate its performance based on the Business Plan targeted goals. There are only three ratings for the contractual agreement and Business Plan. They are as follows: Satisfactory, Minimumally Satisfactory and Unsatisfactory. The SAA must recieve a Satisfactory rating. In the absence of extenuating circumstances, failure to achieve a Satisfactory rating may result in no contract for the subsequent FFY.	This report can be accessed via the SAA hardcopy file and also the Department of Veterans Affairs Education Liaison Reppresentative.
20	Minority Spending Report	Department of Administration, Division of Small and Minority Business Contracting and Certification	State	Quarterly	October 20, 2016	Report purchases made with a minority vendor.	Request from Agency or Entity Requesting the Report

21	IPEDS Data Submission Fall Data Collection	Integrated Postsecondary Education Data System	Outside Organization	Annually	November 1, 2016	CHE compiles from colleges and universities in SC all applicable IPEDS survey components and submits this information through the web-based IPEDS Data Collection System on behalf of the colleges and universities. The fall submission includes the components of institutional characteristics, completions, and 12-month enrollment.	Request from Agency or Entity Requesting the Report
22	Other Funds Survey	Executive Budget Office	State	Annually	November 1, 2016	Executive Order 2016-16 requires all agencies that have been appropriated hidden earmarks in the previous year to make public all grants and contracts awarded with these funds. Executive Order 2016-22 requires all agencies to submit an Other Funds report to the Executive Budget Office that details the revenues collected and program expenditures by the revenues.	Request from Agency or Entity Requesting the Report
23	Abatements	Commission on Higher Education	State	Annually	November 1, 2016	Proviso 11.15 states the following: By November first of each year, state supported institutions of higher learning must submit to the Commission on Higher Education the total number of out-of-state undergraduate students during the prior fiscal year that received abatement of rates pursuant to Section 59-112-70 of the 1976 Code as well as the total dollar amount of the abatements received. The report must include the geo-origin of the student, class of the student, comprehensive listing of all financial awards received by the student, number of semesters the student has received the abated rate, as well as the athletic status of the student. The report must also include the calculation method used to determine the abatement amount awarded to students as well as the number of students that received educational fee waivers pursuant to Section 59-101-620.	Request from Agency or Entity Requesting the Report
24	Grapevine Survey	State Higher Education Executive Officers	Outside Organization	Annually	November 4, 2016	This report requests information on topics such as state support for higher education, public tuition revenue, and annual FTE enrollment.	Request from Agency or Entity Requesting the Report
25	Procurement Report	State Fiscal Accountability Authority - Materials Management Office	State	Quarterly	November 8, 2016	Information on sole source, emergency, trade-in, and illegal procurement data, as well as contracts awarded due to preference applications and the ten percent rule for the previous quarter is requested.	Request from Agency or Entity Requesting the Report
26	SmartState® Annual Report	South Carolina General Assembly	State	Annually	November 30, 2016	Mandated by the General Assembly, the annual report provides a summary of the research initiatives and activities of the 51 Centers.	Request from agency
27	SmartState® Audit	South Carolina General Assembly	State	Annually	November 30, 2016	Mandated by the General Assembly, the annual audit provides a complete accounting for total state appropriations to the endowment and total proposals awarded up to the previous fiscal year.	Request from agency

28	Federal Project Review (FPR) Forms	Executive Budget Office	State	Annually	December 2, 2016	This form provides the Executive Budget Office with programmatic and financial information on each federal project included as anticipated revenue in the agency's detail budget. Information provided includes project information, fiscal impact, funding and budget. See Section 2-65-20.	Request from Agency or Entity Requesting the Report
29	Minority Business Enterprise Utilization Plan	Department of Administration, Division of Small and Minority Business Contracting and Certification	State	Annually	December 8, 2016	This report provides a policy statement and plan to use MBEs, as well as how the agency calculates its controllabe dollars used in the goal for MBE spending.	Request from Agency or Entity Requesting the Report
30	State Higher Education Finance Survey	State Higher Education Executive Officers	Outside Organization	Annually	December 9, 2016	This reports requests information on topics such as full-time equivalent (FTE) enrollment, educational appropriations per FTE, net tuition revenue per FTE, and total educational revenue per FTE.	Request from Agency or Entity Requesting the Report
31	Minority Spending Report	Department of Administration, Division of Small and Minority Business Contracting and Certification	State	Quarterly	January 11, 2017	Report purchases made with a minority vendor.	Request from Agency or Entity Requesting the Report
32	Annual Report on Admission Standards for First-Time Entering Freshmen	General Assembly	State	Annually	February 2, 2017	Admission standards at the public colleges and universities including freshmen applications, acceptances and enrollment, minimum admission requirements, average freshmen ACT and SAT scores, high school course prerequisite compliance and provisional students.	Request from Agency of Entity Requesting the Report
33	Academic Common Market (ACM) Annual Report	Public	State	Annually	February 2, 2017	The Academic Common is a comprehensive report comprised of information describing the ACM and ACM listing of regional programs. The purpose is to disseminate information on the operation of the ACM program for South Carolina.	Request from entities throughout the state and region. Report submitted to CHE board.
34	IPEDS Data Submission Winter Data Collection	Integrated Postsecondary Education Data System	Outside Organization	Annually	February 28, 2017	CHE compiles from colleges and universities in SC all appicable IPEDS survey components and submits this information through the web-based IPEDS Data Collection System on behalf of the colleges and universities. The winter submission includes the components of student financial aid, graduation rates, outcome measures, and admissions.	Request from Agency or Entity Requesting the Report
35	Statistical Abstract	Public	State	Annually	April 1, 2017	The Statistical Abstract is a comprehensive, single-source compilation fo tables and graphs which report data frequently requested by the Governor, Legislators, college and university staff, other government officials, and the general public. This report includes the most recent statistcs on enrollment, degrees awarded, faculty, tuition and fees, funding, and other factual data.	Request from Agency. Listed on Agency Website.

36	Minority Spending Report	Department of Administration, Division of Small and Minority Business Contracting and Certification	State	Quarterly	April 4, 2017	Report purchases made with a minority vendor.	Request from Agency or Entity Requesting the Report
37	Gear Up Annual Performance Review	US Department of Education	Federal	Annually	April 17, 2017	Each GEAR UP program is required to submit an Annual Performance Report (APR) to the US Department of Education regarding services provided to students and their families, management of annual budget and amount of match that has been documented.	Report can be requested from the US Department of Education
38	Procurement Report	State Fiscal Accountability Authority - Materials Management Office	State	Quarterly	April 21, 2017	Information on sole source, emergency, trade-in, and illegal procurement data, as well as contracts awarded due to preference applications and the ten percent rule for the previous quarter is requested.	Request from Agency or Entity Requesting the Report
39	IPEDS Data Submission Spring Data Collection	Integrated Postsecondary Education Data System	Outside Organization	Annually	April 25, 2017	CHE compiles from colleges and universities in SC all applicable IPEDS survey components and submits this information through the web-based IPEDS Data Collection System on behalf of the colleges and universities. The spring submission includes the components of fall enrollment, finance, academic libraries, and human resources.	Request from Agency or Entity Requesting the Report
40	Procurement Report	State Fiscal Accountability Authority - Materials Management Office	State	Quarterly	April 30, 2017	Every governmental body covered by the Consolidated Procurement Code is required to file with the MMO office quarterly reports of: sole source, emergency, trade-in, and illegal procurement data, as well as contracts awarded due to preference applications and the ten percent rule.	Request from Agency or Entity Requesting the Report
41	SREB Data Upload Parts 1 and 4	Southern Regional Education Board	Outside Organization	Annually	May 5, 2017	CHE submits data to the SREB Data Exchange to assist in the collection, compilation and publication of statistics on postsecondary education in the 16-state SREB region. The components submitted for Parts 1 and 4 includes degrees and other award conferred and estimated full year credit/contact hours by student level.	Request from Agency or Entity Requesting the Report

42	Lottery Fund Expenditures - Proviso 3.1 Lottery Expenditures and Audits	Executive Budget Office, Chairman of the Senate Finance Committee, Chairman of the House Ways and Means Committee	State	Annually	May 24, 2017	For institutions of higher learning, adopted procedures to monitor expenditures of lottery funds shall be reported to the Commission on Higher Education and the Executive Budget Office by October, 1, 2016, and these expenditures are subject to annual verification and audit by the Commission on Higher Education on a rotational schedule not to exceed three years. The annual verification and audit shall be funded from the funds appropriated to or authorized for the Commission on Higher Education and the commission shall not assess a fee or charge institutions of higher learning for performing this function. In addition, the Commission on Higher Education shall provide a report to the Executive Budget Office, the Chairman of the Senate Finance Committee, and the Chairman of the House Ways and Means Committee by October 1 each year summarizing, by institution, how lottery funds were expended in the prior fiscal year, issues and concerns as well as institution responses to those issues and concerns discovered as a result of the commission's verification and/or audit activity during the prior fiscal year, if any.	Request from Agency or Entity Requesting the Report
43	SREB Data Upload Parts 3, 5, 6, 7, 8	Southern Regional Education Board	Outside Organization	Annually	June 2, 2017	CHE submits data to the SREB Data Exchange to assist in the collection, compilation and publication of statistics on postsecondary education in the 16-state SREB region. The components submitted for Parts 3, 5, 6, 7, and 8 includes time and attempted credits to bachelor's or associate degrees; estimated full year credit/contact hours by type of institution; state/local funding and tuition/fees revenues for operating expenses; annualized tuition and mandatory fees charged full-time in-state and out-of-state students; and tuition related policies and mid-year increases.	Request from Agency or Entity Requesting the Report
44	SREB Data Upload Part 2	Southern Regional Education Board	Outside Organization	Annually	June 23, 2017	CHE submits data to the SREB Data Exchange to assist in the collection, compilation and publication of statistics on postsecondary education in the 16-state SREB region. The components submitted for Part 2 includes student first year persistence rates and progression rates.	Request from Agency or Entity Requesting the Report

45	Compliance Survey Status Report	Department of Veterans Affairs Central Office/Education Liaison Representative	Federal	Monthly	Nov 5, 2015 Dec 5, 2016 Jan 5, 2016 Feb 5, 2016 Mar 5, 2016 Apr 5, 2016 May 5, 2016 Jun 5, 2016 Jul 5, 2016 Aug 5, 2016 Sep 5, 2016	The compliance survey status report consist of the audit conducted and completed by the SAA at the colleges, universities, schools and training establishments. The status report of the end product taken or pending the two-way referral from the VA Regional Processing Office.	This report can be accessed via the SAA hardcopy file.
46	State Approving Agency - Quarterly Report	Department of Veterans Affairs Central Office/Education Liaison Representative	Federal	Quarterly	Jan 30, 2016 Apr 30, 2016 Jul 30, 2016 Oct 14, 2016	The quarterly report consist of program approvals, disapprovals, revisions, deletions, teach-out and new programs, technical assistance provided to college, universities, training establishments, veterans and professional development, VA Requested and Inspection Visits, outreach and liaison activities.	This report can be accessed via the SAA hardcopy file and also the Department of Veterans Affairs Education Liaison Reppresentative.
47	South Carolina Local Employment Veteran Representative (LVER)- Report	Department of Veterans Affairs Central Office/Education Liaison Representative	Federal	Annually	March 31, 2017 and August 31, 2016.	With a collaboritive effort with the SC Department of Employment Workforce and SC Ready, the LVER Report consist of an outreach visit to the state agency on how to best inform veterans of the job opportunities in the state and how to use their GI Bill benefits.	This report can be accessed via the SAA hardcopy file and also the Department of Veterans Affairs Education Liaison Reppresentative.
48	Department of Veterans Affairs Compliance Survey - Report	Department of Veterans Affairs Central Office/Education Liaison Representative	Federal	Timeline varies	There were 38 compliance survey reports for FFY 2016. The 38 compliance survey reports varied due to the contractual timeline noted below. The timelines are noted in days. The number of calendar days are: seven (7), 15, and 30.	The compliance survey report consist of an audit of the veterans those eligeible to receiving GI Bill benefits. The SAA reviews the program of approval, transcripts , Various VA forms for correct certification for GI Bill Benefits and student account ledgers. Prior to each FFY, the Department of Veterans Affairs assigns the number of compliance survey visits the SAA must conduct and if possible, complete by August 15, of the upcoming FFY. The due date for the compliance survey report are contingent upon the errors that are found during the compliance survey visit. If it is a financial error that requires a referral action to the VA, and upon the VA returning the referral respone back to the SAA, the SAA will have the following timelines /days in which to complete and submit the report to the VA. One copy of the compliance survey report is mailed to the school and one is copy is retained in the SAA's file. This report is in accordance with the Department of Veterans Affairs and the State Approving Agency Contractural and Business Plan agreements for the FFY. This report is also to ensure that the targeted meusements and goals are being met by the SAA.	This report can be accessed via the SAA hardcopy file and also the Department of Veterans Affairs Education Liaison Reppresentative.

Agency Name: Commission on Higher Education

**Fiscal Year 2016-2017
Accountability Report**

Agency Code: H030 **Section:** 011

External Review Template

Item	Name of Entity Conducted External Review	Type of Entity	External Review Timeline (MM/DD/YYYY to MM/DD/YYYY)	Method to Access the External Review Report
1	Senate Oversight Committee	State	2/1/2017-Current	Review is ongoing, but available from the agency once complete. This is an oversight audit of the agency.
2	Derrick Stubbs & Smith LLP	Outside Organization	7/1/2015-6/30/2016	Request from agency or the General Assembly website. This is an audit of the financials of the SmartState program.
3	SC Education Liaison Representative	Federal	10/1/2015-9/30/2016	Request from DVA ELR. Each state that is contracted with the DVA has an ELR. The ELR is responsible for reviewing the SAA's approval, and disapproval actions, and compliance survey reports from the beginning of each FFY. Upon completion of the FFY, the ELR will provide one of three recommended ratings to the DVA on how the SAA performed and the other targeted goals according to the Contract and Business Plan. The three ratings are: Satisfactory, Minimally Satisfactory and Unsatisfactory.
4	Joint Peer Review Group	Federal	10/1/2015-9/30/2016	Request from DVA Central Office located in Washington, DC. The JPRG is a board that is up of eight members. The JPRG usually convenes in the month November of the current FFY to review the SAA and ELR evaluations of the SAA's performance for the prior FFY.