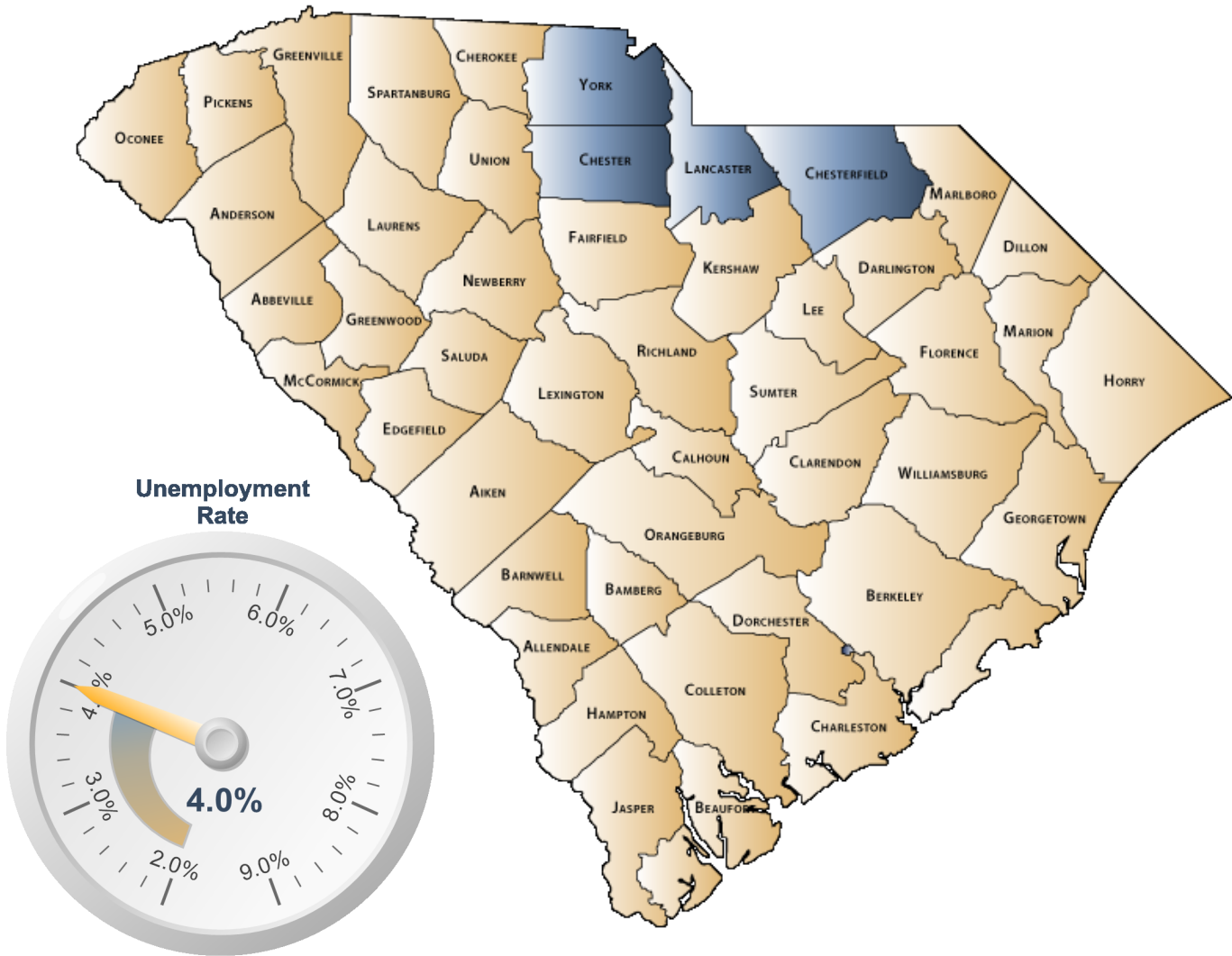


# ECONOMIC PROFILE

Charlotte Regional Partnership



*\*Disclaimer: The data provided for the Charlotte Regional Partnership is limited to the counties of the partnership residing within South Carolina.*

**S.C. Department of Employment & Workforce**  
Labor Market Information

1550 Gadsden Street, PO Box 995  
Columbia, SC 29202  
803-737-2660

[www.SCWorkforceInfo.com](http://www.SCWorkforceInfo.com)

<http://CharlotteUSA.com/>

Updated: 04/21/2017



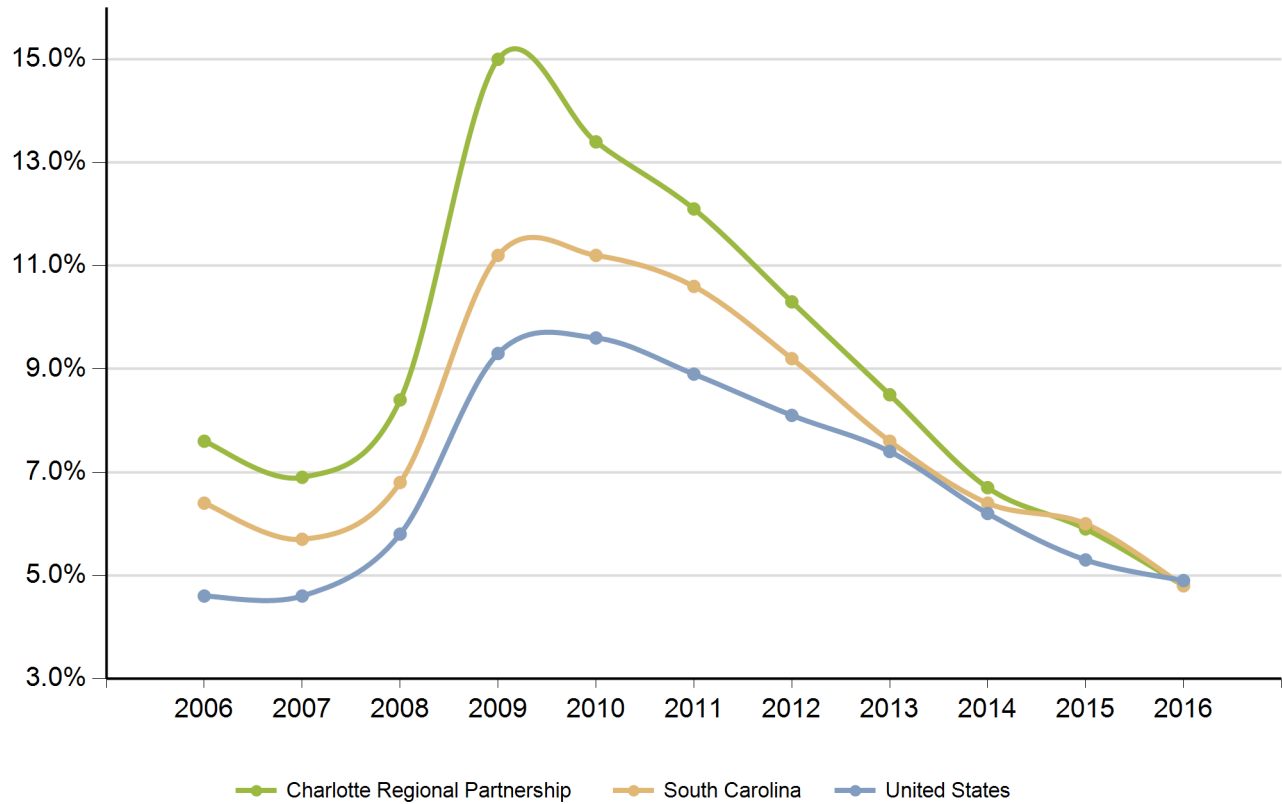
## Table of Contents

<b>1. Economic Data</b>	
Annual Unemployment Rates.....	3
Monthly Unemployment Rates.....	4
Area Job Openings.....	5
Unemployment Insurance	
Demographic Data.....	6
Industry Data.....	7
Occupation Data.....	8
Retail Sales.....	9
<b>2. Demographic Data</b>	
Population	
Age.....	10
Race.....	11
Gender.....	11
Change.....	12
Employer Data	
Size of Establishments.....	13
Employment by Size of Establishment.....	13
20 Largest Employers.....	14
<b>3. Industry Data</b>	
Employment by Industry.....	15
New Startup Firms.....	16
Top Occupational Openings.....	17
New Hires by Industry.....	18
Average Annual Wage by Industry.....	19
Age of Workers by Industry.....	20
<b>4. Education Data</b>	
Educational Attainment.....	21
Graduate Trends.....	22
Educational Institutions.....	23

**\*Disclaimer: All data provided is an aggregate of the counties' data that comprise the Charlotte Regional Partnership**

## Annual Unemployment Rate (Unadjusted)

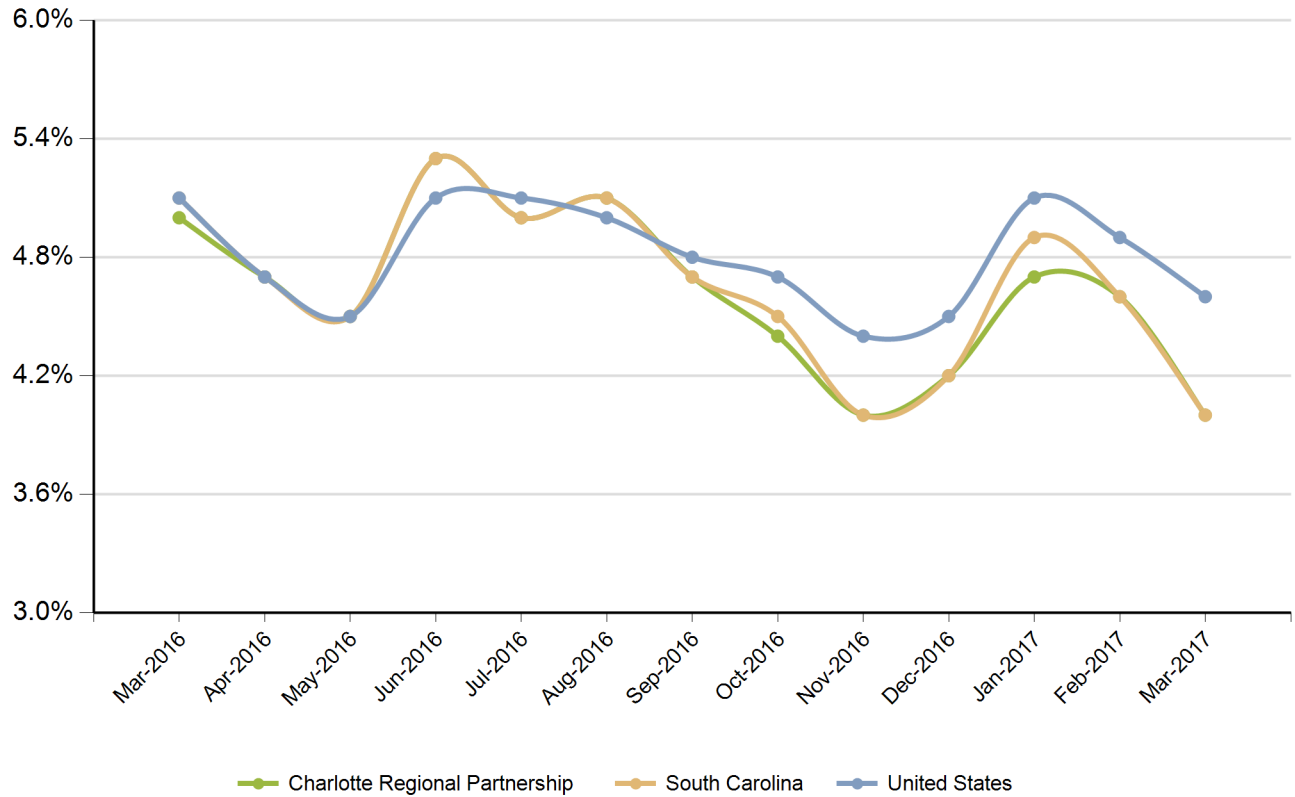
Trends



Year	Charlotte Regional Partnership			South Carolina			United States		
	Employed	Unemployed	Unemp Rate	Employed	Unemployed	Unemp Rate	Employed	Unemployed	Unemp Rate
2006	153,714	12,594	7.6%	1,973,337	135,760	6.4%	144,427,000	7,001,000	4.6%
2007	156,766	11,617	6.9%	2,005,686	120,205	5.7%	146,047,000	7,078,000	4.6%
2008	156,741	14,428	8.4%	1,996,409	145,823	6.8%	145,362,000	8,924,000	5.8%
2009	150,617	26,658	15.0%	1,910,670	242,075	11.2%	139,877,000	14,265,000	9.3%
2010	160,687	24,890	13.4%	1,915,045	240,623	11.2%	139,064,000	14,825,000	9.6%
2011	164,182	22,549	12.1%	1,945,900	229,623	10.6%	139,869,000	13,747,000	8.9%
2012	168,670	19,328	10.3%	1,985,618	201,260	9.2%	142,469,000	12,506,000	8.1%
2013	172,688	16,000	8.5%	2,026,666	167,647	7.6%	143,929,000	11,460,000	7.4%
2014	179,733	12,981	6.7%	2,081,511	143,151	6.4%	146,305,000	9,617,000	6.2%
2015	186,661	11,715	5.9%	2,134,637	135,746	6.0%	148,834,000	8,296,000	5.3%
2016	193,408	9,740	4.8%	2,186,740	111,067	4.8%	151,436,000	7,751,000	4.9%

Source: SC Department of Employment &amp; Workforce

## Monthly Unemployment Rate (Unadjusted)



Period	Charlotte Regional Partnership	South Carolina	United States
Mar-2016	5.0%	5.1%	5.1%
Apr-2016	4.7%	4.7%	4.7%
May-2016	4.5%	4.5%	4.5%
Jun-2016	5.3%	5.3%	5.1%
Jul-2016	5.0%	5.0%	5.1%
Aug-2016	5.1%	5.1%	5.0%
Sep-2016	4.7%	4.7%	4.8%
Oct-2016	4.4%	4.5%	4.7%
Nov-2016	4.0%	4.0%	4.4%
Dec-2016	4.2%	4.2%	4.5%
Jan-2017	4.7%	4.9%	5.1%
Feb-2017	4.6%	4.6%	4.9%
Mar-2017	4.0%	4.0%	4.6%

Source: SC Department of Employment & Workforce

## Area Job Openings

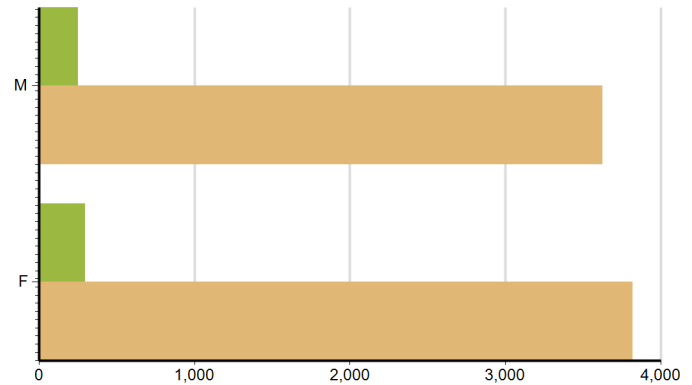
Period	Charlotte Regional Partnership				South Carolina			
	Employed	Unemployed	Unemp Rate	Job Openings	Employed	Unemployed	Unemp Rate	Job Openings
Mar-2016	191,934	10,152	5.0%	4,096	2,174,229	122,223	5.3%	61,889
Apr-2016	192,821	9,437	4.7%	4,224	2,177,304	119,636	5.2%	67,021
May-2016	193,613	9,171	4.5%	4,007	2,180,526	116,513	5.1%	63,126
Jun-2016	194,087	10,779	5.3%	4,271	2,183,933	113,034	4.9%	61,518
Jul-2016	193,278	10,186	5.0%	4,264	2,187,396	109,596	4.8%	61,572
Aug-2016	193,683	10,445	5.1%	2,910	2,190,670	106,559	4.6%	63,800
Sep-2016	194,257	9,525	4.7%	4,192	2,193,612	104,025	4.5%	61,522
Oct-2016	196,252	8,996	4.4%	4,262	2,196,147	101,772	4.4%	59,888
Nov-2016	195,695	8,130	4.0%	4,247	2,198,274	99,867	4.3%	59,494
Dec-2016	195,591	8,528	4.2%	4,021	2,199,862	98,225	4.3%	55,454
Jan-2017	196,198	9,699	4.7%	4,413	2,209,188	101,455	4.4%	64,254
Feb-2017	196,873	9,400	4.6%	4,404	2,220,060	103,363	4.4%	61,052
Mar-2017	198,875	8,328	4.0%	4,604	2,229,599	103,587	4.4%	59,863

Source: SC Department of Employment & Workforce, The Conference Board's Help Wanted OnLine® Data Series  
South Carolina Data is Seasonally Adjusted

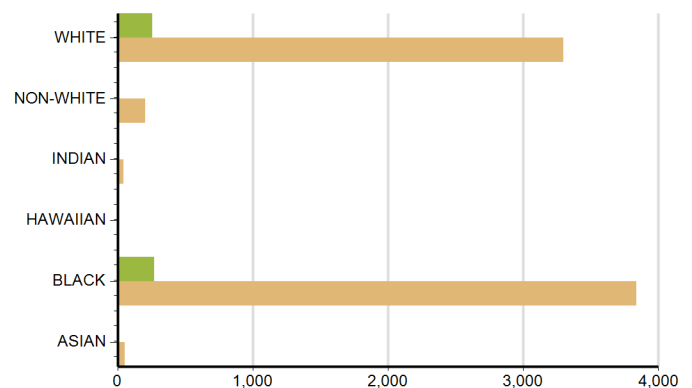
## Characteristics of Unemployment Insurance Claimants

March-2017

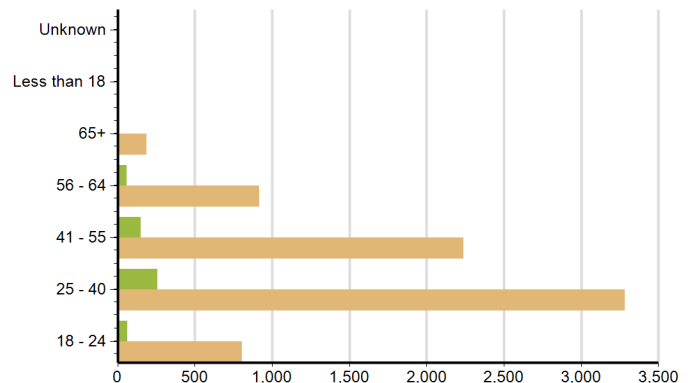
Gender	Charlotte Regional Partnership	South Carolina
Female	298	3,821
Male	252	3,625



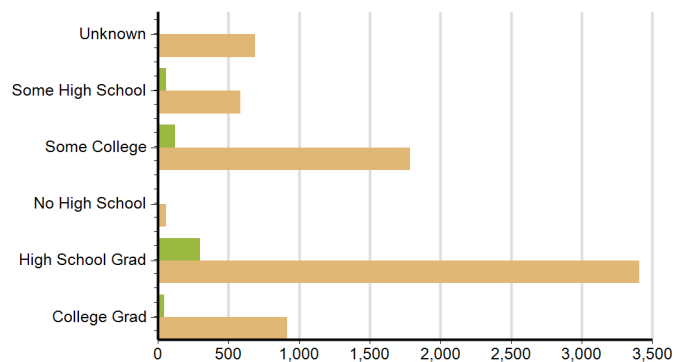
Race	Charlotte Regional Partnership	South Carolina
ASIAN	4	54
BLACK	271	3,838
HAWAIIAN	1	8
INDIAN	5	45
NON-WHITE	10	204
WHITE	259	3,297



Age Group	Charlotte Regional Partnership	South Carolina
18 - 24	66	805
25 - 40	259	3,283
41 - 55	152	2,241
56 - 64	61	918
65+	12	188



Education	Charlotte Regional Partnership	South Carolina
College Grad	47	917
High School Grad	297	3,408
No High School	8	59
Some College	123	1,786
Some High School	60	586
Unknown	15	690

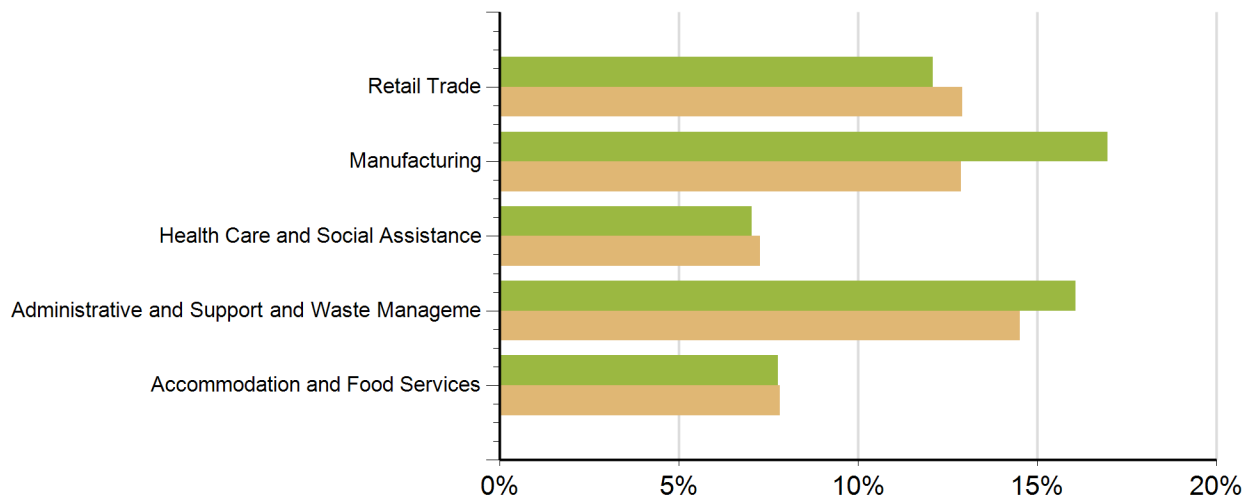


Source: SC Department of Employment & Workforce

## Characteristics of Unemployment Insurance Claims by Industry

Industry Groups with Largest Number of Claims

March-2017



Industry	Charlotte Regional Partnership	South Carolina
Transportation and Warehousing	7	261
Management of Companies and Enterprises	2	26
Mining, Quarrying, and Oil and Gas Extraction	1	6
Manufacturing	94	961
Professional, Scientific, and Technical Servi	30	427
Administrative and Support and Waste Managemene	89	1,083
Other Services (except Public Administration)	8	163
Unknown	87	823
Wholesale Trade	25	341
Health Care and Social Assistance	39	542
Retail Trade	67	963
Finance and Insurance	13	188
Information	3	132
Real Estate and Rental and Leasing	2	107
Educational Services	2	112
Agriculture, Forestry, Fishing and Hunting	3	46
Construction	21	508
Arts, Entertainment, and Recreation	4	48
Accommodation and Food Services	43	583
Public Administration	12	128
Utilities	2	13

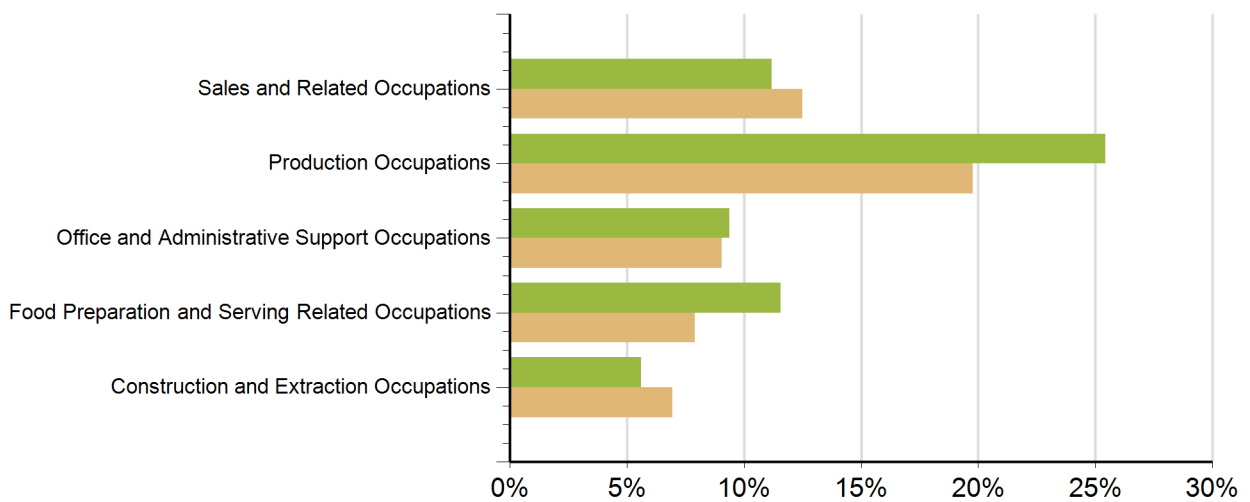
Source: SC Department of Employment & Workforce



## Characteristics of Unemployment Insurance Claims by Occupation

### Occupation Groups with Largest Number of Claims

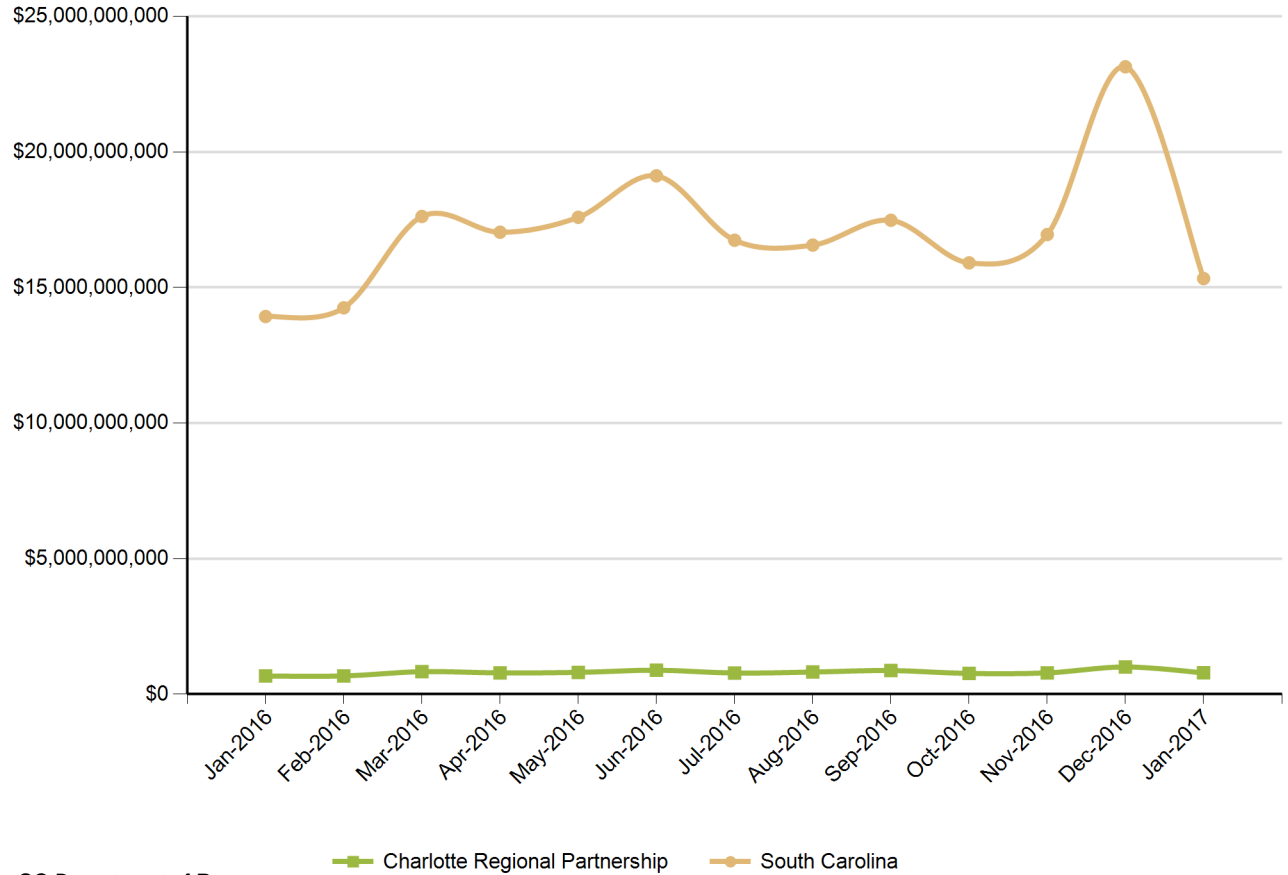
March-2017



Occupation	Charlotte Regional Partnership	South Carolina
Architecture and Engineering Occupations	11	119
Arts, Design, Entertainment, Sports, and Media Occ	2	53
Building and Grounds Cleaning and Maintenance Occu	13	265
Business and Financial Operations Occupations	20	277
Community and Social Service Occupations	3	53
Computer and Mathematical Occupations	7	124
Construction and Extraction Occupations	31	518
Education, Training, and Library Occupations	3	82
Farming, Fishing, and Forestry Occupations	1	32
Food Preparation and Serving Related Occupations	64	590
Healthcare Practitioners and Technical Occupations	18	163
Healthcare Support Occupations	29	335
Installation, Maintenance, and Repair Occupations	20	265
Life, Physical, and Social Science Occupations	1	10
Management Occupations	29	506
Military Specific Occupations	4	32
Office and Administrative Support Occupations	52	675
Personal Care and Service Occupations	6	103
Production Occupations	141	1,476
Protective Service Occupations	3	78
Sales and Related Occupations	62	933
Transportation and Material Moving Occupations	16	319
Unknown	18	427

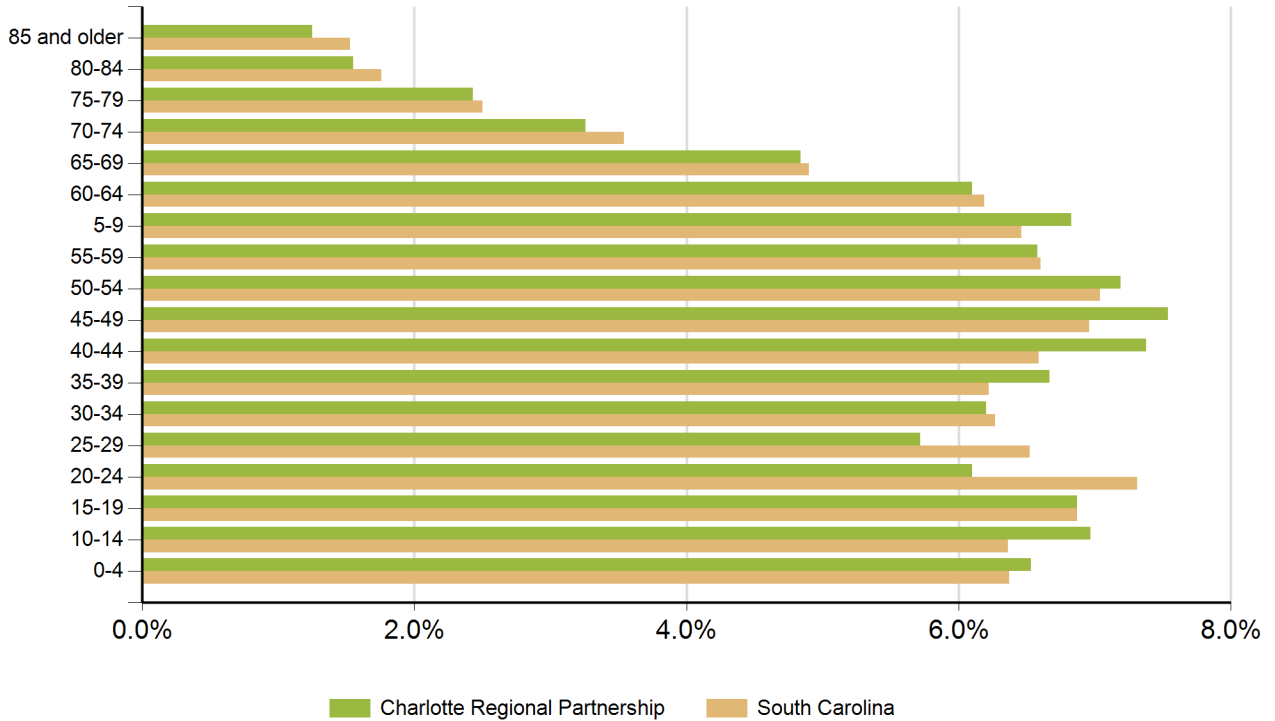
Source: SC Department of Employment & Workforce

## Retail Sales



Source: SC Department of Revenue

## Population by Age



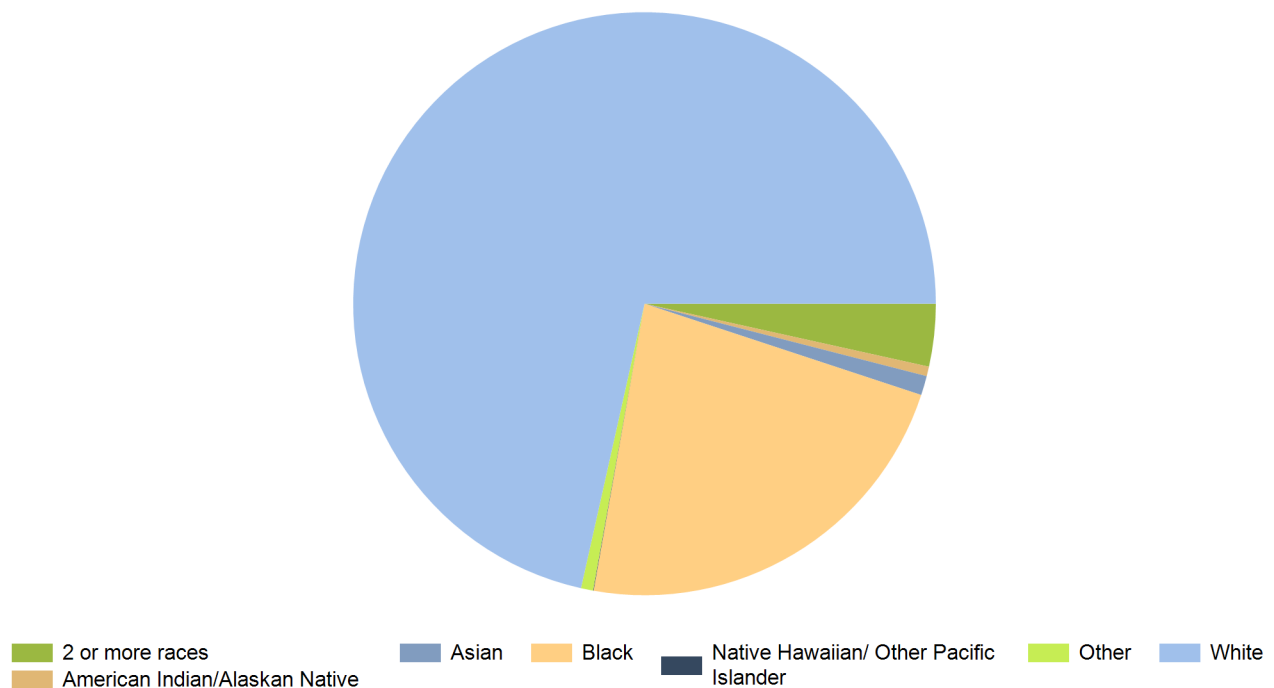
Age Range	Charlotte Regional Partnership	South Carolina	United States
0-4	25,359	298,242	20,052,112
5-9	26,505	302,111	20,409,060
10-14	27,066	297,443	20,672,609
15-19	26,659	321,540	21,715,074
20-24	23,685	342,237	22,099,887
25-29	22,201	305,167	21,243,365
30-34	24,067	293,464	20,467,912
35-39	25,901	291,183	19,876,161
40-44	28,647	308,158	20,998,001
45-49	29,262	325,660	22,109,946
50-54	27,926	329,431	22,396,322
55-59	25,537	309,061	20,165,892
60-64	23,676	289,690	17,479,211
65-69	18,774	229,251	13,189,508
70-74	12,659	165,797	9,767,522
75-79	9,441	117,187	7,438,750
80-84	6,011	82,223	5,781,697
85 and older	4,835	71,757	5,673,565

Source: US Census Bureau, American Community Survey

## Population by Race

Race	Charlotte Regional Partnership	%	South Carolina	%	United States	%
White	282,461	71.5%	3,144,146	66.0%	230,592,579	72.0%
Black	89,805	22.7%	1,298,534	27.3%	39,167,010	12.2%
American Indian/Alaskan Native	2,103	0.5%	14,732	0.3%	2,540,309	0.8%
Asian	4,233	1.1%	61,097	1.3%	15,231,962	4.8%
Native Hawaiian/ Other Pacific Islander	113	0.0%	2,128	0.0%	526,347	0.2%
2 or more races	13,690	3.5%	169,670	3.6%	17,464,666	5.5%
Other	2,651	0.7%	74,130	1.6%	14,746,054	4.6%

Source: US Census Bureau, American Community Survey



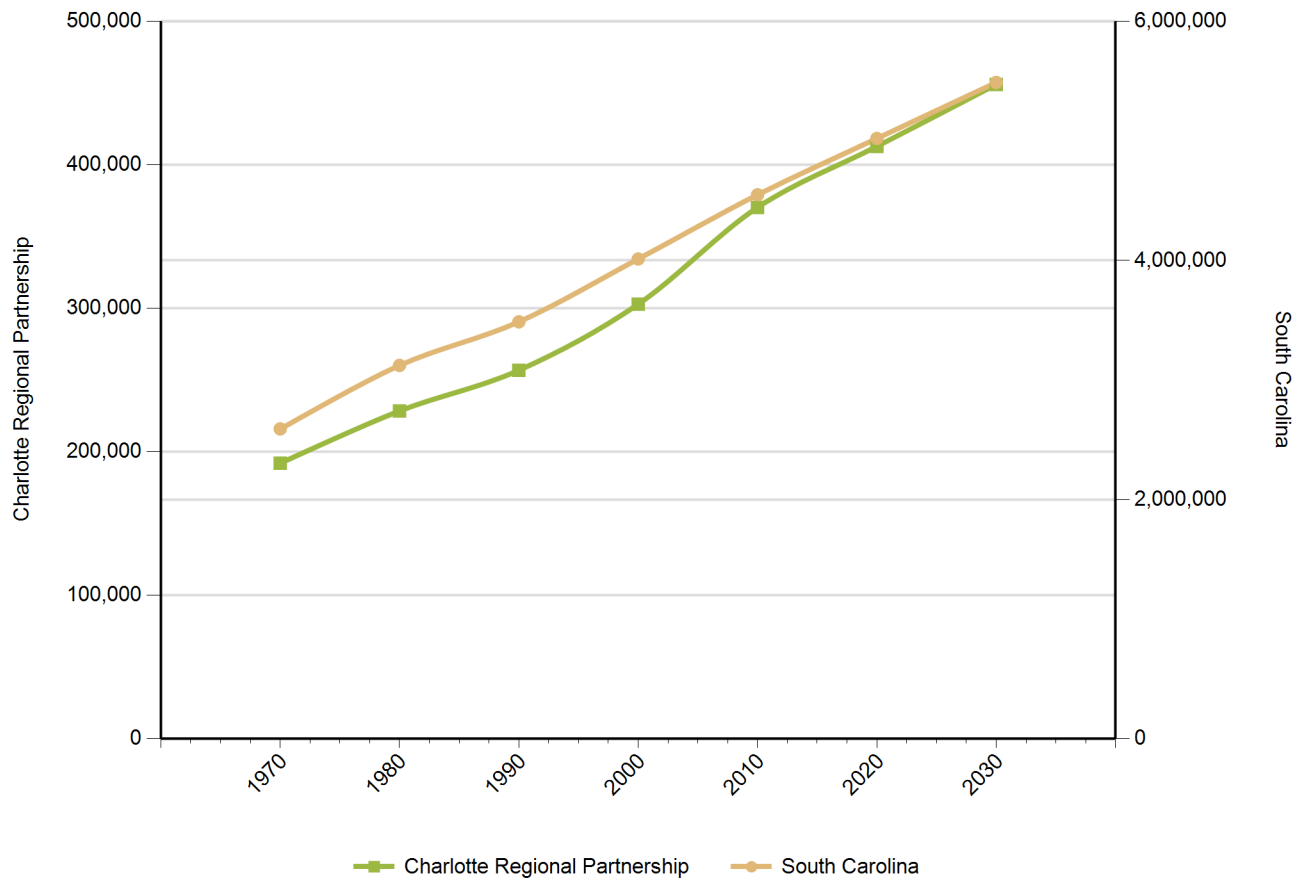
## Population by Gender

Gender	Charlotte Regional Partnership	South Carolina	United States
Female	199,912	2,403,297	158,289,182
Male	188,299	2,276,305	153,247,412

Source: US Census Bureau, American Community Survey

## Population Change

*Historical and Projected*



Year	Charlotte Regional Partnership	South Carolina
1970	192,022	2,590,713
1980	228,390	3,121,820
1990	256,758	3,486,310
2000	302,801	4,012,012
2010	370,290	4,549,150
2020	412,830	5,020,400
2030	455,950	5,488,460

Source: US Census Bureau

## Employers by Size of Establishment

Employees	Charlotte Regional Partnership	South Carolina
0 to 4	4,348	72,215
5 to 9	1,305	19,964
10 to 19	914	14,629
20 to 49	704	11,292
50 to 99	276	4,446
100 to 249	164	2,717
250 to 499	42	824
500 to 999	15	376
1000 +	12	286

## Employment by Size of Establishment

Employees	Charlotte Regional Partnership	South Carolina
0 to 4	6,971	109,185
5 to 9	8,663	133,038
10 to 19	12,426	199,397
20 to 49	21,724	346,711
50 to 99	18,777	305,282
100 to 249	24,433	411,824
250 to 499	14,517	284,463
500 to 999	10,788	256,747
1000 +	18,222	731,712

Source: SC Department of Employment & Workforce - Q3 2016

## 20 Largestest Employers

(Listed Alphabetically)

### Corporation Name

WAL-MART ASSOCIATES INC

SCHAEFFLER GROUP USA INC

RBUS INC

ROCK HILL SCHOOL DISTRICT NO 3

WELLS FARGO BANK N A

FORT MILL SCHOOL DISTRICT NO 4

AMISUB OF SOUTH CAROLINA INC

ROSS DRESS FOR LESS INC

LASH GROUP INC

DUKE ENERGY CORPORATION

CLOVER SCHOOL DISTRICT NO 2

COUNTY OF YORK

WINTHROP UNIVERSITY

EXPRESS SERVICES INC

CHESTERFIELD COUNTY SCHOOL DISTRICT

DMSI STAFFING LLC

COMPORIUM INC

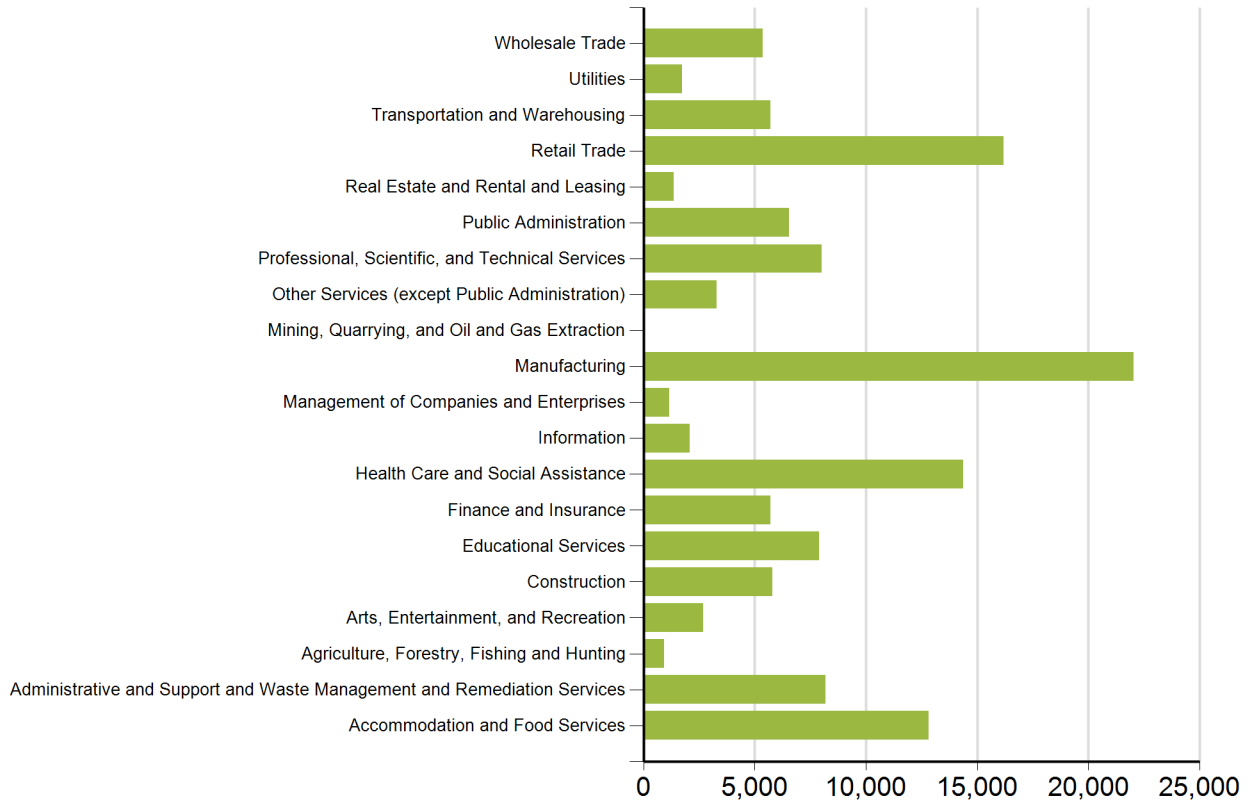
CITY OF ROCK HILL

MAGNUM MANAGEMENT CORPORATION

YORK SCHOOL DISTRICT NO 1

*Source: SC Department of Employment & Workforce - Q3 2016*

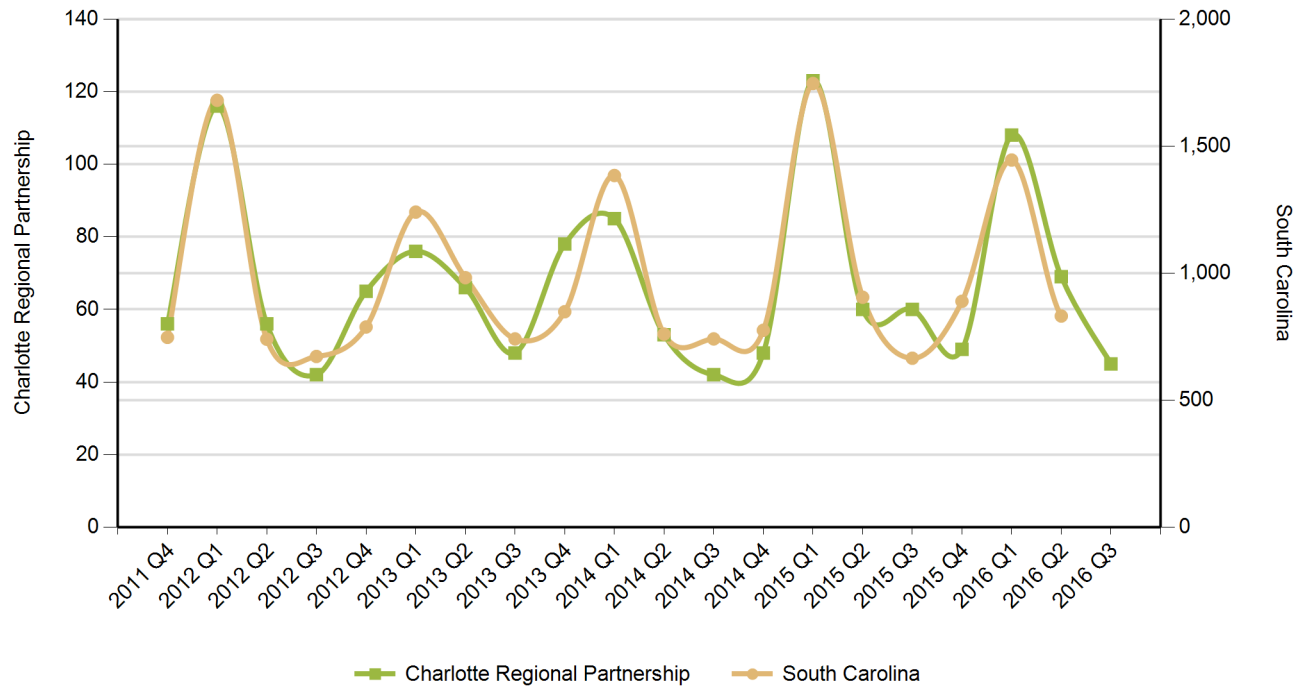
## Employment by Industry



Source: SC Department of Employment & Workforce  
 Quarterly Census of Employment and Wages (QCEW) - Q3 2016



## New Startup Firms



Quarter	Charlotte Regional Partnership	South Carolina
2016 Q3	45	
2016 Q2	69	831
2016 Q1	108	1,445
2015 Q4	49	889
2015 Q3	60	665
2015 Q2	60	905
2015 Q1	123	1,746
2014 Q4	48	775
2014 Q3	42	741
2014 Q2	53	760
2014 Q1	85	1,384
2013 Q4	78	848
2013 Q3	48	741
2013 Q2	66	982
2013 Q1	76	1,240
2012 Q4	65	788
2012 Q3	42	672
2012 Q2	56	740
2012 Q1	116	1,680
2011 Q4	56	747

Note: A firm is included in the count when it does not have a UI Account Number in the previous quarter and has a Setup Date that falls in the quarter displayed.

Source: SC Department of Employment & Workforce

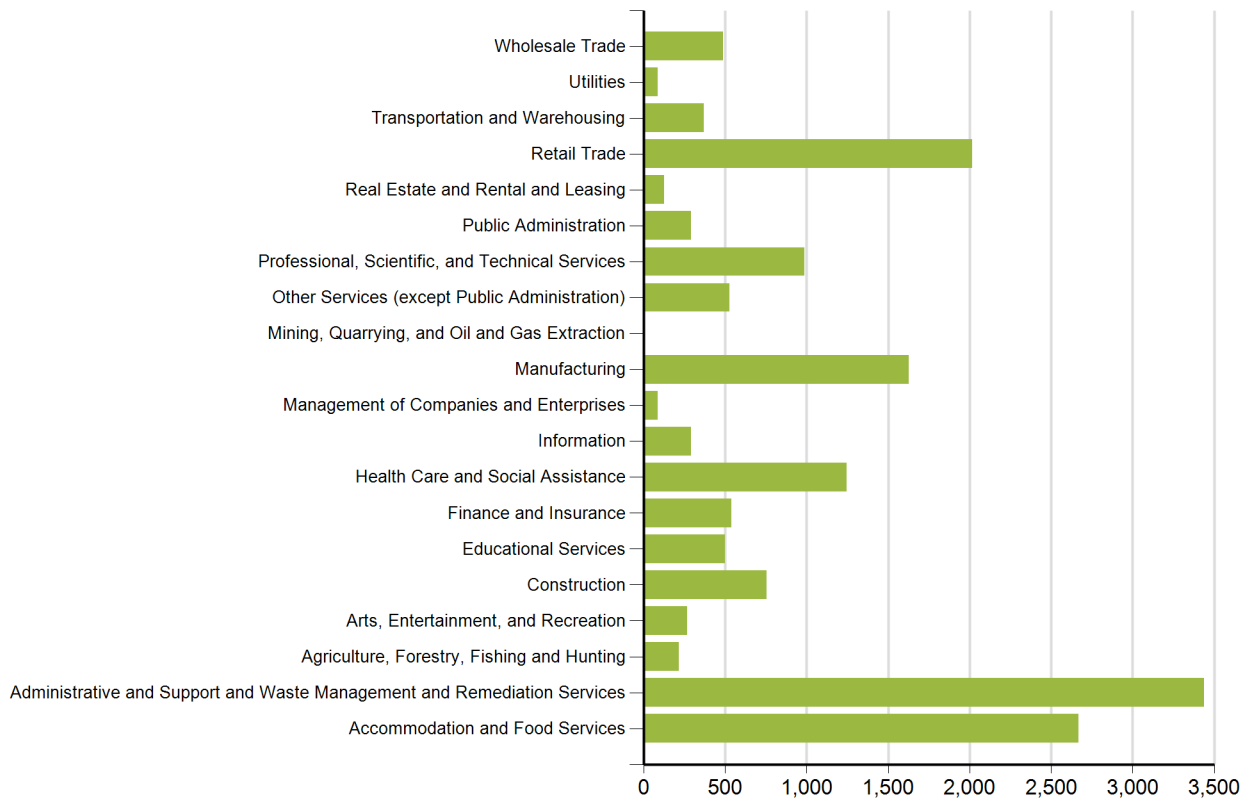
## Top 20 Occupational Openings

April 2016

Occupation Name (Soccode)	Job Opening
Registered Nurses (29-1141)	287
Heavy and Tractor-Trailer Truck Drivers (53-3032)	237
Retail Salespersons (41-2031)	80
Laborers and Freight, Stock, and Material Movers, Hand (53-7062)	74
Industrial Engineers (17-2112)	73
First-Line Supervisors of Office and Administrative Support Workers (43-1011)	72
First-Line Supervisors of Food Preparation and Serving Workers (35-1012)	71
First-Line Supervisors of Retail Sales Workers (41-1011)	70
Customer Service Representatives (43-4051)	67
First-Line Supervisors of Production and Operating Workers (51-1011)	66
Maintenance and Repair Workers, General (49-9071)	64
Stock Clerks and Order Fillers (43-5081)	59
Accountants and Auditors (13-2011)	58
Computer Occupations, All Other (15-1199)	57
Computer Systems Analysts (15-1121)	53
Combined Food Preparation and Serving Workers, Including Fast Food (35-3021)	45
Licensed Practical and Licensed Vocational Nurses (29-2061)	44
Medical Assistants (31-9092)	42
Computer User Support Specialists (15-1151)	36
Physical Therapists (29-1123)	35

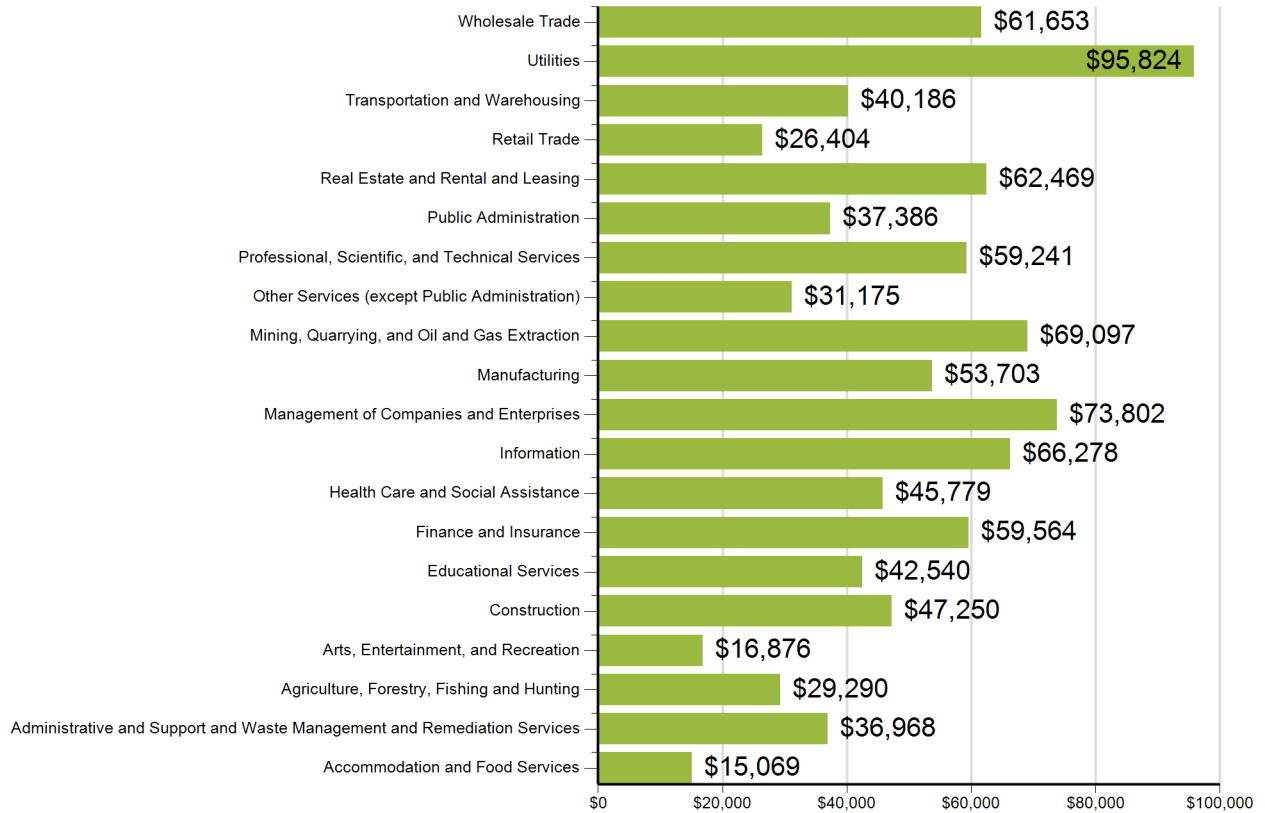
Source: SC Department of Employment & Workforce and The Conference Board's Help Wanted OnLine® Data Series

## New Hires by Industry



US Census Bureau, Local Employment Dynamics - Q1 2014

## Average Annual Wage by Industry



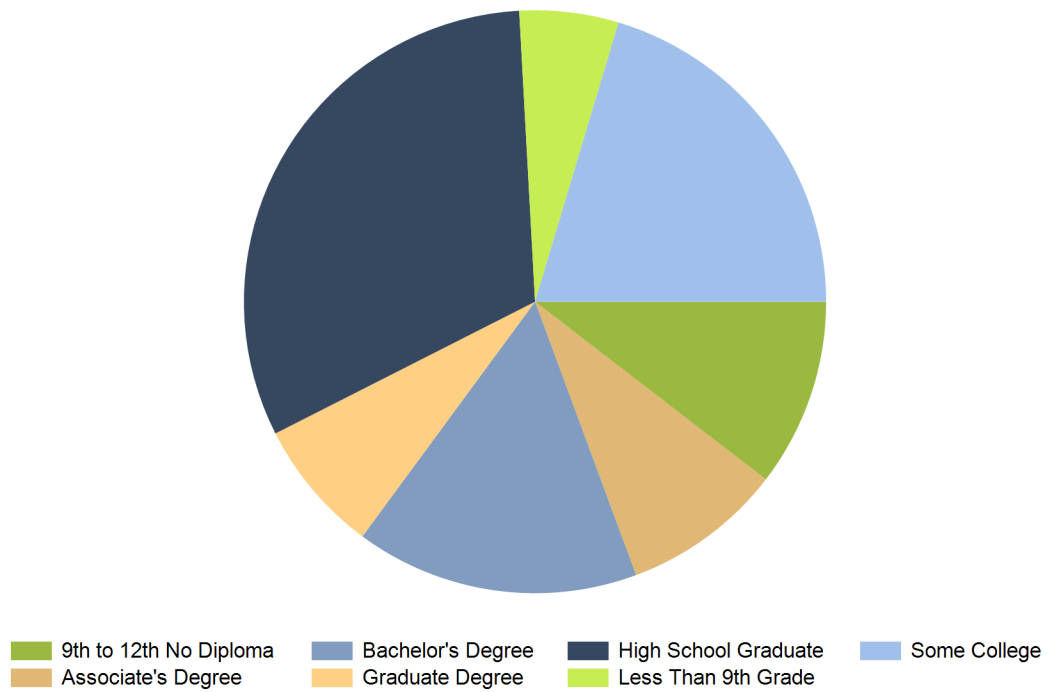
Source: SC Department of Employment & Workforce  
 Quarterly Census of Employment and Wages (QCEW) - Q3  
 2016

## Age of Workers by Industry

Industry	14-18	19-21	22-24	25-34	35-44	45-54	55-64	65+
Total, All Industries	2,258	5,140	7,340	25,868	27,778	28,070	19,959	5,900
Agriculture, Forestry, Fishing and Hunting	9	22	32	118	146	155	118	60
Mining, Quarrying, and Oil and Gas Extraction	0	0	4	18	31	49	31	4
Utilities	0	5	21	264	322	488	632	56
Construction	19	94	162	860	956	1,057	635	213
Manufacturing	36	322	741	3,444	4,970	6,072	4,240	729
Wholesale Trade	9	79	167	928	1,416	1,466	977	311
Retail Trade	505	1,371	1,468	3,311	2,710	2,856	1,971	780
Transportation and Warehousing	14	140	169	544	681	699	491	149
Information	18	32	97	469	480	431	332	101
Finance and Insurance	6	94	324	1,950	1,937	1,402	807	170
Real Estate and Rental and Leasing	0	14	52	236	313	296	227	69
Professional, Scientific, and Technical Services	31	109	339	1,367	1,123	966	657	244
Management of Companies and Enterprises	12	26	53	282	351	317	191	47
Administrative and Support and Waste Management and Remediat	74	466	720	2,324	1,965	1,794	1,112	362
Educational Services	60	84	347	2,256	3,337	3,396	2,944	888
Health Care and Social Assistance	36	254	643	2,910	3,276	3,018	2,110	625
Arts, Entertainment, and Recreation	144	145	105	236	254	246	177	161
Accommodation and Food Services	1,172	1,592	1,409	2,582	1,522	1,320	700	262
Other Services (except Public Administration)	74	177	218	585	584	594	448	226
Public Administration	17	92	261	1,180	1,404	1,448	1,149	441

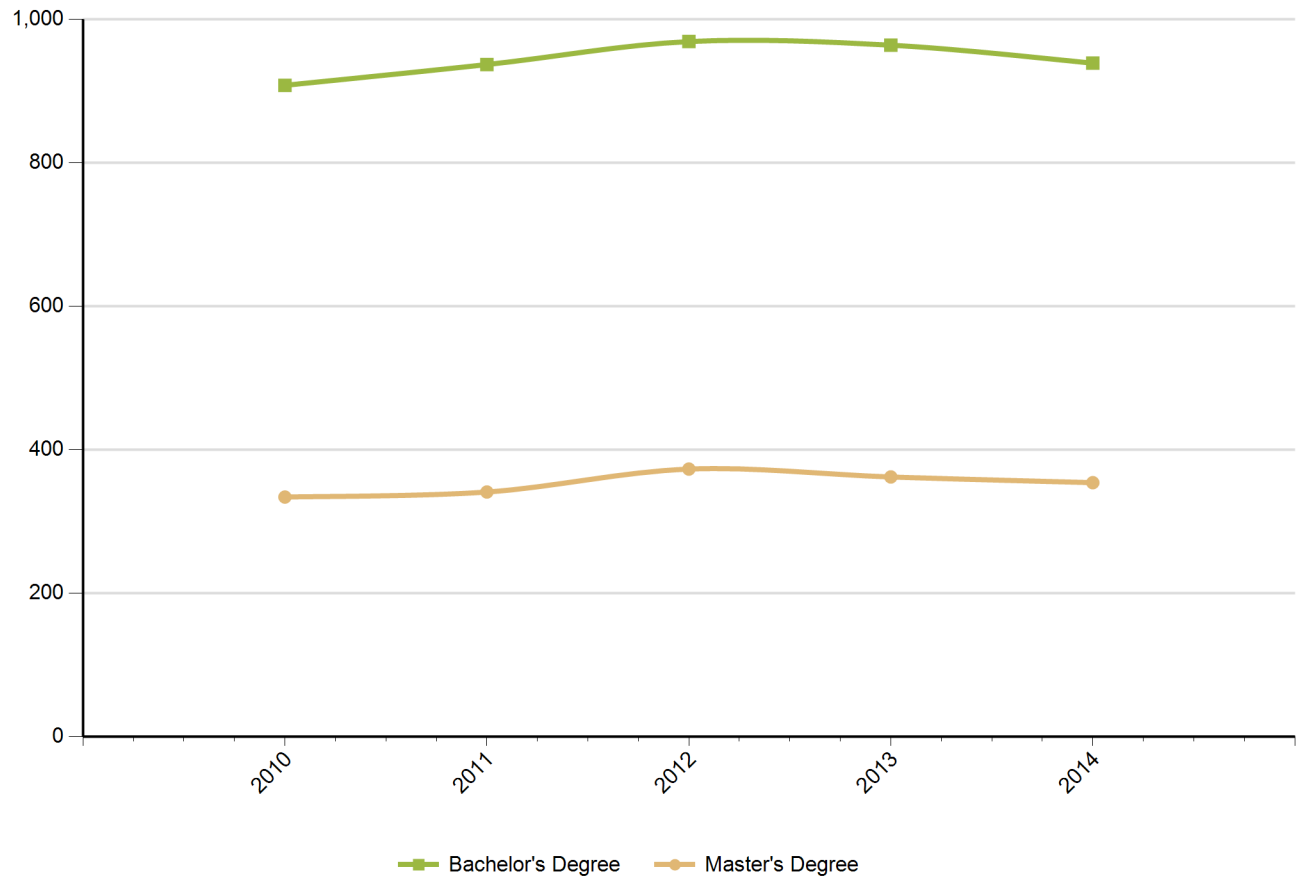
Source: US Census Bureau, Local Employment Dynamics - Q1 2014

## Educational Attainment (Population 25 Years and Older)



Source: US Census Bureau, American Community Survey - 2013 5-Year Estimates

## Graduate Trends



Source: Institute of Education Sciences (IES), Integrated Postsecondary Education Data System

## Educational Institutions

Clinton College  
1029 Crawford Rd  
Rock Hill, SC 29730  
803.327.7402  
<http://www.clintonjuniorcollege.edu>  
2014 Degrees Awarded: 31

Northeastern Technical College  
1201 Chesterfield Hwy.  
Cheraw, SC 29520  
843.921.6900  
<http://www.netc.edu>  
2014 Degrees Awarded: 284

University of South Carolina-Lancaster  
476 Hubbard Drive  
Lancaster, SC 29720  
803.313.7000  
<http://usclancaster.sc.edu/>  
2014 Degrees Awarded: 134

York Technical College  
452 S Anderson Rd  
Rock Hill, SC 29730  
803.327.8000  
<http://www.yorktech.edu>  
2014 Degrees Awarded: 783

Kenneth Shuler School of Cosmetology-Rock Hill  
2383 Cherry Road  
Rock Hill, SC 29730  
803.315.4904  
<http://www.kennethshuler.com>  
2014 Degrees Awarded: 44

Styletrends Barber and Hairstyling Academy  
239 Hampton St  
Rock Hill, SC 29730  
803.328.0807  
<http://www.styletrendsacademy.com>  
2014 Degrees Awarded: 20

Winthrop University  
701 Oakland Ave  
Rock Hill, SC 29733  
803.323.2211  
<http://www.winthrop.edu>  
2014 Degrees Awarded: 1297

*Source: Institute of Education Sciences (IES), Integrated Postsecondary Education Data System*