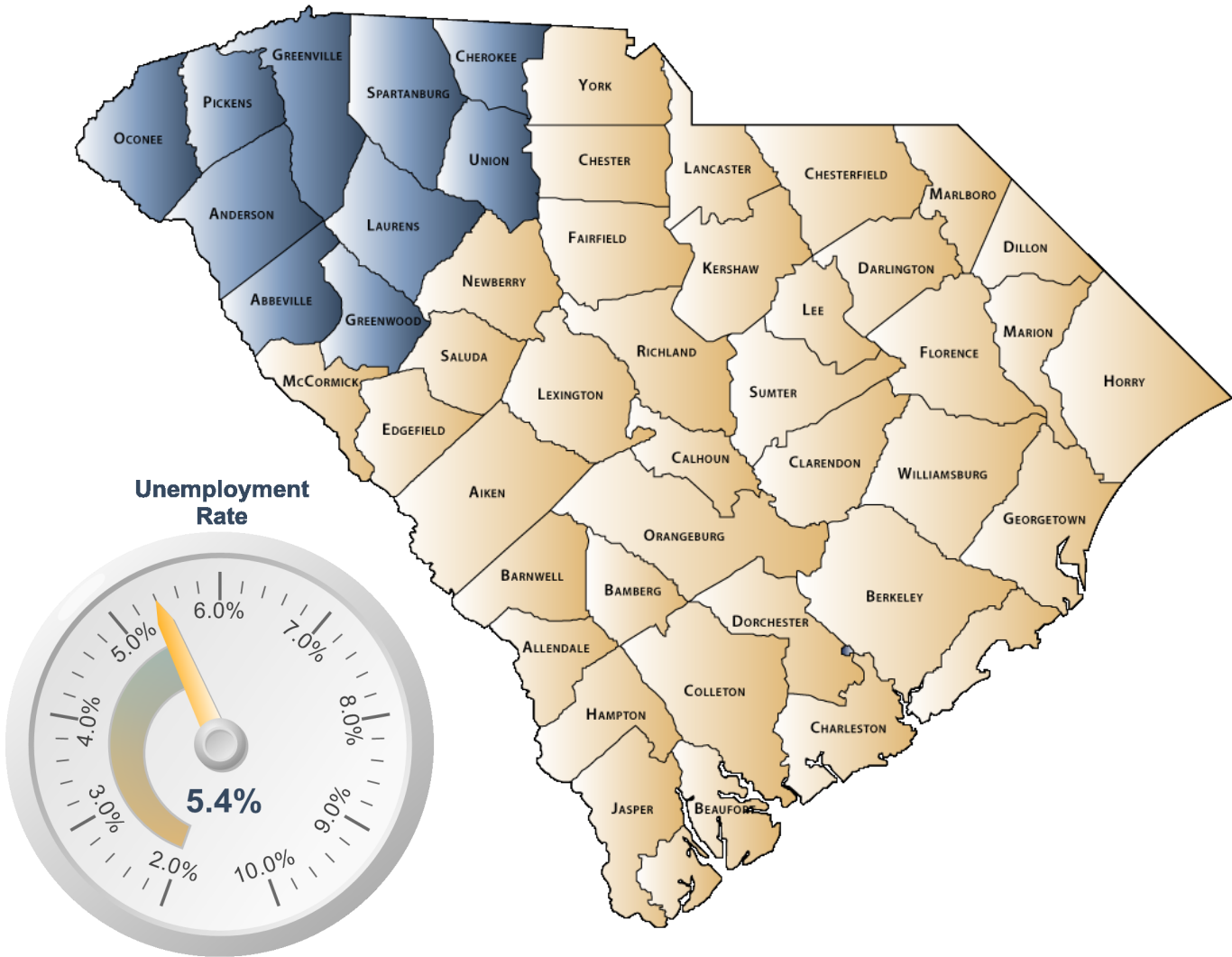


ECONOMIC PROFILE

Upstate Alliance



S.C. Department of Employment & Workforce
Labor Market Information

1550 Gadsden Street, PO Box 995
Columbia, SC 29202
803-737-2660

www.SCWorkforceInfo.com

Table of Contents

1. Economic Data

Annual Unemployment Rates.....	3
Monthly Unemployment Rates.....	4
Area Job Openings.....	5
Unemployment Insurance	
Demographic Data.....	6
Industry Data.....	7
Occupation Data.....	8
Retail Sales.....	9

2. Demographic Data

Population	
Age.....	10
Race.....	11
Gender.....	11
Change.....	12
Employer Data	
Size of Establishments.....	13
Employment by Size of Establishment.....	13
20 Largest Employers.....	14

3. Industry Data

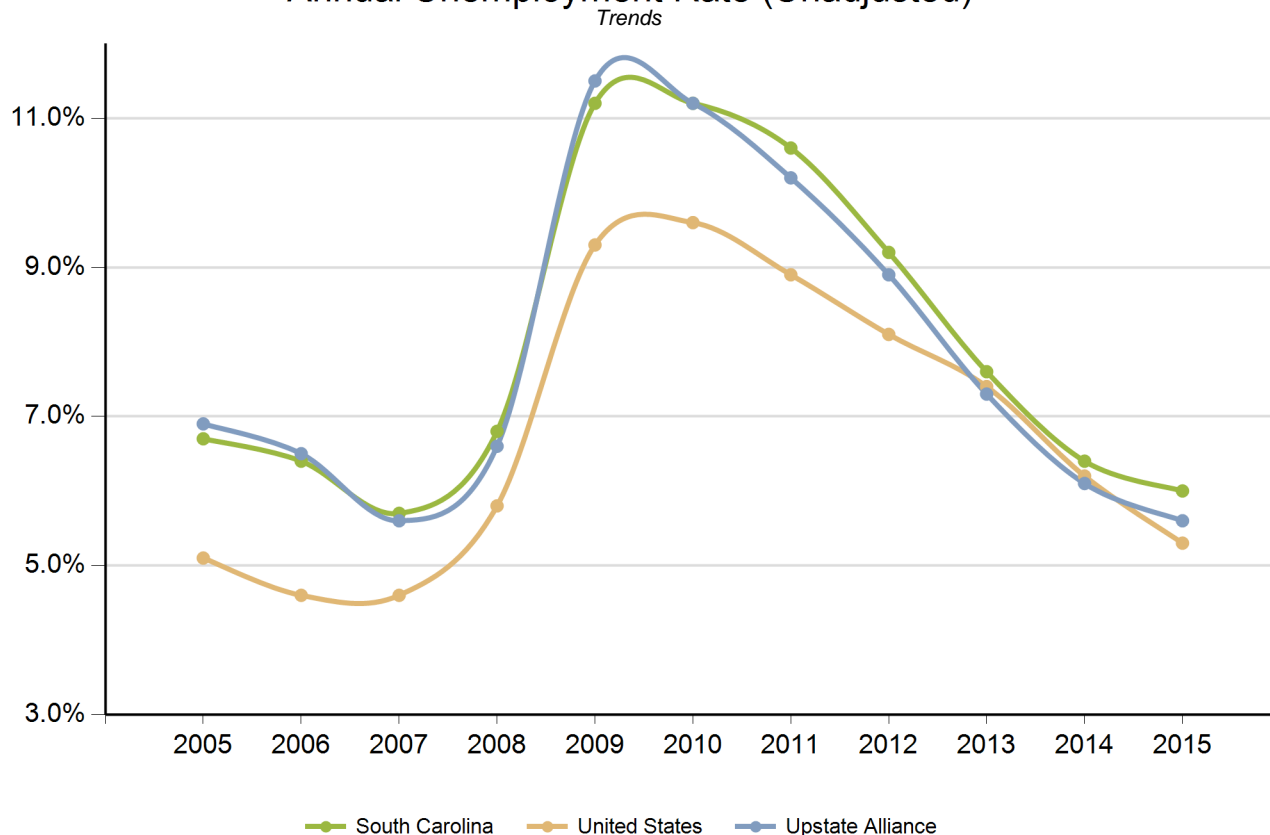
Employment by Industry.....	15
New Startup Firms.....	16
Top Occupational Openings.....	17
New Hires by Industry.....	18
Average Annual Wage by Industry.....	19
Age of Workers by Industry.....	20

4. Education Data

Educational Attainment.....	21
Graduate Trends.....	22
Educational Institutions.....	23

***Disclaimer: All data provided is an aggregate of the counties' data that comprise the Upstate Alliance**

Annual Unemployment Rate (Unadjusted)

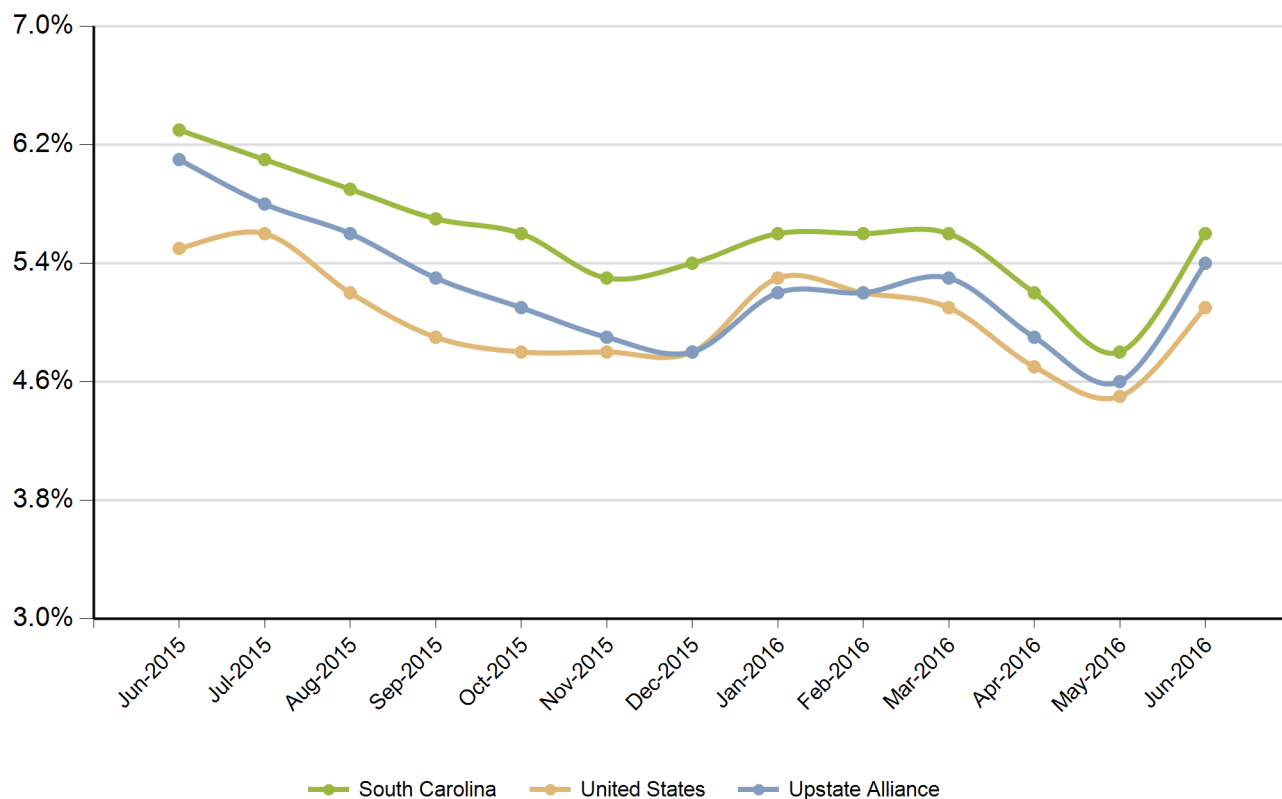


Year	Upstate Alliance			South Carolina			United States		
	Employed	Unemployed	Unemp Rate	Employed	Unemployed	Unemp Rate	Employed	Unemployed	Unemp Rate
2005	586,400	43,453	6.9%	1,929,233	139,366	6.7%	141,730,000	7,591,000	5.1%
2006	595,446	41,733	6.5%	1,973,337	135,760	6.4%	144,427,000	7,001,000	4.6%
2007	605,061	36,071	5.6%	2,005,686	120,205	5.7%	146,047,000	7,078,000	4.6%
2008	603,344	42,487	6.6%	1,996,409	145,823	6.8%	145,362,000	8,924,000	5.8%
2009	570,279	73,883	11.5%	1,910,670	242,075	11.2%	139,877,000	14,265,000	9.3%
2010	562,808	71,278	11.2%	1,915,045	240,623	11.2%	139,064,000	14,825,000	9.6%
2011	574,922	65,476	10.2%	1,945,900	229,623	10.6%	139,869,000	13,747,000	8.9%
2012	586,167	56,963	8.9%	1,983,506	200,607	9.2%	142,469,000	12,506,000	8.1%
2013	599,712	47,165	7.3%	2,022,444	166,924	7.6%	143,929,000	11,460,000	7.4%
2014	613,840	39,844	6.1%	2,074,277	142,505	6.4%	146,305,000	9,617,000	6.2%
2015	628,717	37,101	5.6%	2,122,573	134,504	6.0%	148,834,000	8,296,000	5.3%

Source: SC Department of Employment & Workforce

Monthly Unemployment Rate (Unadjusted)

Past 13 Months



Period	Upstate Alliance	South Carolina	United States
Jun-2015	6.1%	6.3%	5.5%
Jul-2015	5.8%	6.1%	5.6%
Aug-2015	5.6%	5.9%	5.2%
Sep-2015	5.3%	5.7%	4.9%
Oct-2015	5.1%	5.6%	4.8%
Nov-2015	4.9%	5.3%	4.8%
Dec-2015	4.8%	5.4%	4.8%
Jan-2016	5.2%	5.6%	5.3%
Feb-2016	5.2%	5.6%	5.2%
Mar-2016	5.3%	5.6%	5.1%
Apr-2016	4.9%	5.2%	4.7%
May-2016	4.6%	4.8%	4.5%
Jun-2016	5.4%	5.6%	5.1%

Source: SC Department of Employment & Workforce

Area Job Openings

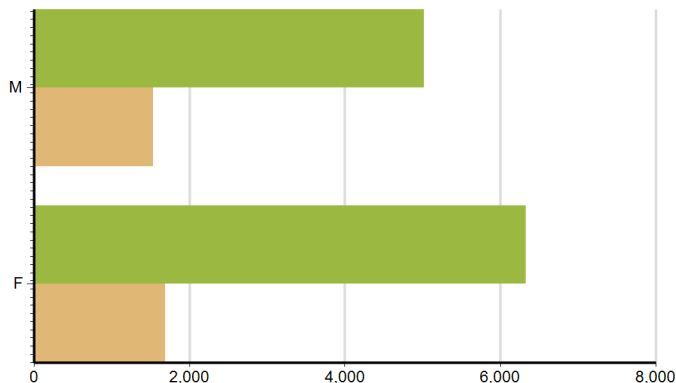
Period	Upstate Alliance				South Carolina			
	Employed	Unemployed	Unemp Rate	Job Openings	Employed	Unemployed	Unemp Rate	Job Openings
Jun-2015	631,602	40,967	6.1%	19,467	2,117,636	132,841	5.9%	73,702
Jul-2015	631,641	38,608	5.8%	19,599	2,122,043	129,098	5.7%	73,050
Aug-2015	629,871	37,354	5.6%	19,358	2,126,323	126,465	5.6%	71,760
Sep-2015	628,646	35,231	5.3%	18,835	2,130,209	125,030	5.5%	71,372
Oct-2015	635,294	33,942	5.1%	19,099	2,133,670	124,395	5.5%	71,138
Nov-2015	632,643	32,528	4.9%	17,513	2,136,651	124,159	5.5%	73,219
Dec-2015	635,041	32,302	4.8%	14,244	2,138,997	124,433	5.5%	60,418
Jan-2016	634,538	34,730	5.2%	15,485	2,150,533	124,506	5.5%	56,427
Feb-2016	640,537	34,884	5.2%	16,579	2,162,709	125,494	5.5%	64,238
Mar-2016	646,423	36,174	5.3%	16,127	2,174,655	131,324	5.7%	61,889
Apr-2016	646,707	33,224	4.9%	15,502	2,181,794	134,295	5.8%	67,021
May-2016	646,527	30,898	4.6%	13,892	2,185,072	129,861	5.6%	63,126
Jun-2016	647,151	37,145	5.4%	14,894	2,185,181	125,591	5.4%	61,518

Source: SC Department of Employment & Workforce, The Conference Board's Help Wanted OnLine® Data Series
South Carolina Data is Seasonally Adjusted

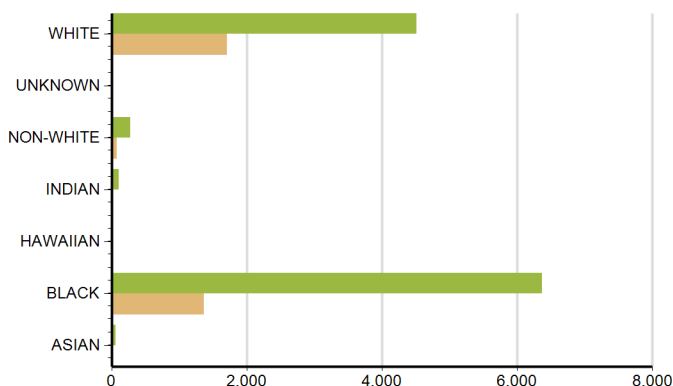
Characteristics of Unemployment Insurance Claimants

June-2016

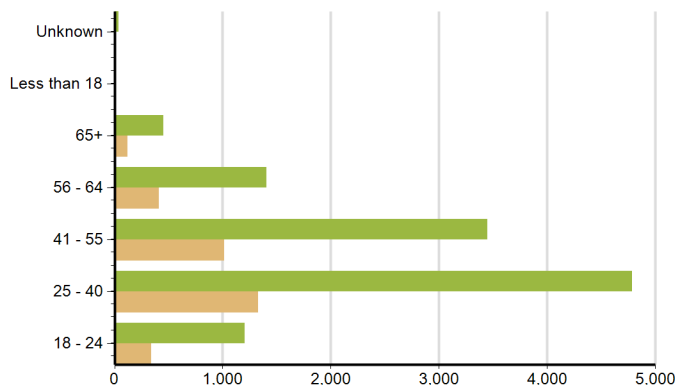
Gender	Upstate Alliance	South Carolina
Female	1,690	6,325
Male	1,529	5,020



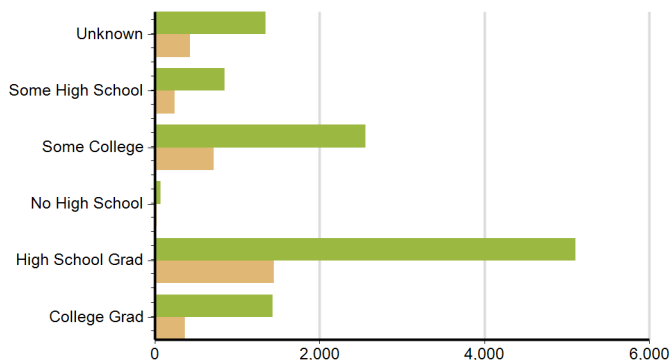
Race	Upstate Alliance	South Carolina
ASIAN	26	64
BLACK	1,372	6,367
HAWAIIAN	7	16
INDIAN	27	106
NON-WHITE	81	282
UNKNOWN	1	1
WHITE	1,705	4,509



Age Group	Upstate Alliance	South Carolina
18 - 24	338	1,206
25 - 40	1,326	4,786
41 - 55	1,014	3,448
56 - 64	413	1,408
65+	120	454
Less than 18	2	4
Unknown	6	39



Education	Upstate Alliance	South Carolina
College Grad	364	1,426
High School Grad	1,448	5,103
No High School	23	72
Some College	713	2,553
Some High School	243	847
Unknown	428	1,344

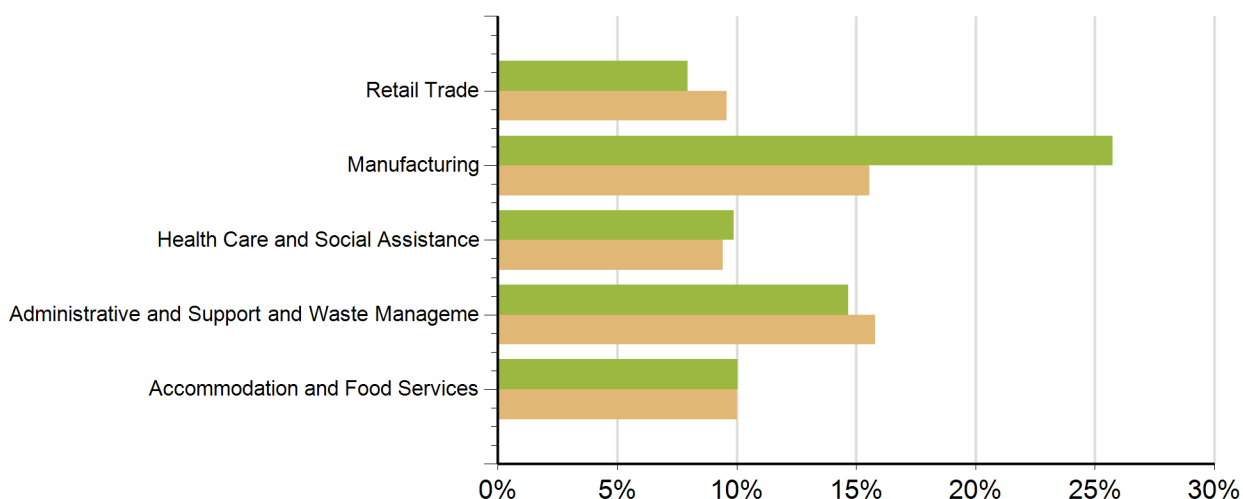


Source: SC Department of Employment & Workforce

Characteristics of Unemployment Insurance Claims by Industry

Industry Groups with Largest Number of Claims

June-2016



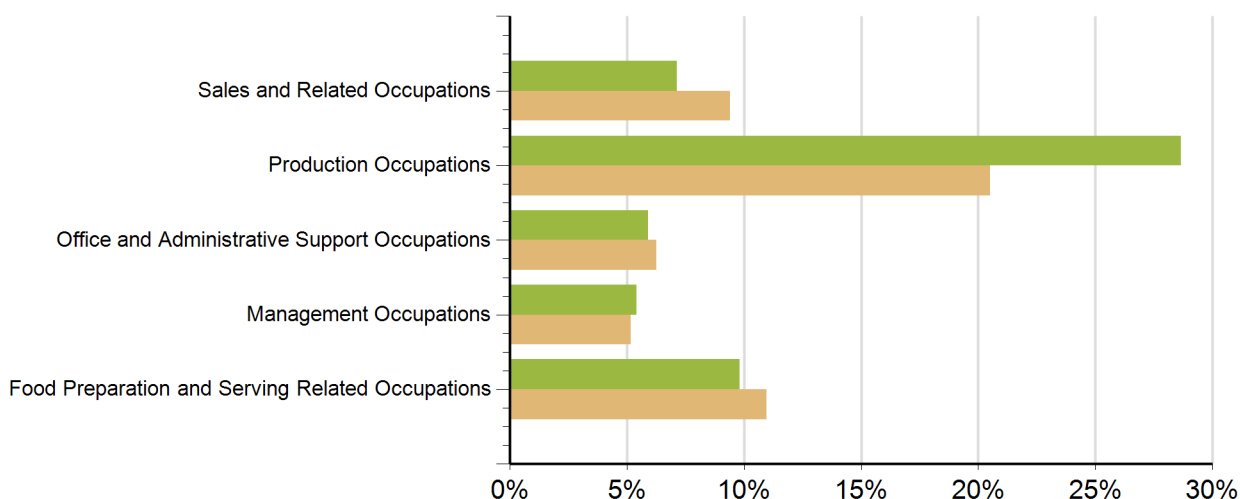
Industry	Upstate Alliance	South Carolina
Wholesale Trade	96	347
Health Care and Social Assistance	318	1,069
Transportation and Warehousing	103	450
Management of Companies and Enterprises	39	66
Mining, Quarrying, and Oil and Gas Extraction	2	8
Manufacturing	829	1,769
Retail Trade	256	1,089
Finance and Insurance	53	181
Utilities	2	13
Information	41	104
Real Estate and Rental and Leasing	21	149
Educational Services	101	406
Agriculture, Forestry, Fishing and Hunting	3	52
Construction	104	457
Arts, Entertainment, and Recreation	9	96
Accommodation and Food Services	323	1,138
Public Administration	36	190
Professional, Scientific, and Technical Services	177	471
Administrative and Support and Waste Management	473	1,795
Other Services (except Public Administration)	47	386
Unknown	188	1,123

Source: SC Department of Employment & Workforce

Characteristics of Unemployment Insurance Claims by Occupation

Occupation Groups with Largest Number of Claims

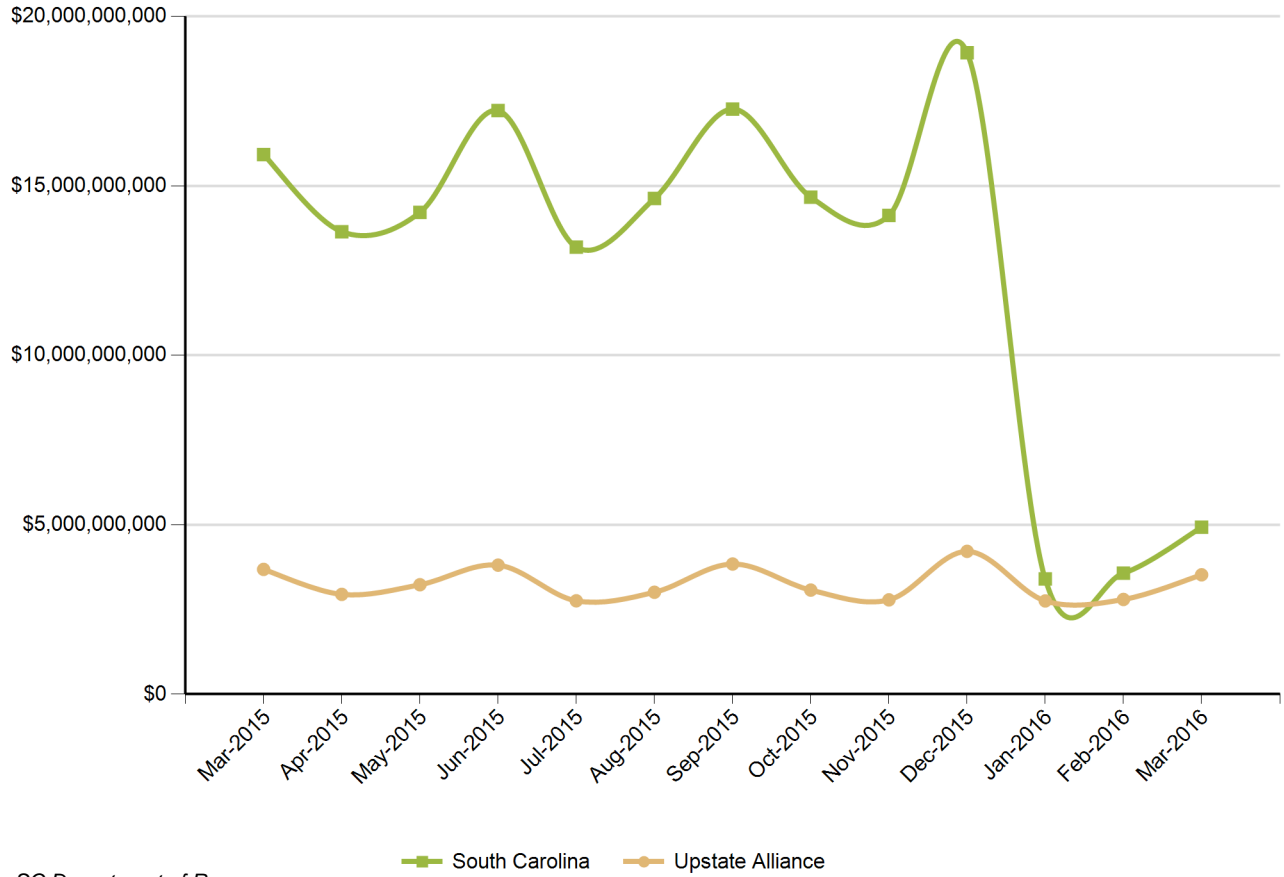
June-2016



Occupation	Upstate Alliance	South Carolina
Architecture and Engineering Occupations	52	157
Arts, Design, Entertainment, Sports, and Media Occ	22	67
Building and Grounds Cleaning and Maintenance Occu	72	480
Business and Financial Operations Occupations	86	352
Community and Social Service Occupations	31	117
Computer and Mathematical Occupations	50	165
Construction and Extraction Occupations	95	551
Education, Training, and Library Occupations	135	723
Farming, Fishing, and Forestry Occupations	3	47
Food Preparation and Serving Related Occupations	316	1,245
Healthcare Practitioners and Technical Occupations	51	174
Healthcare Support Occupations	108	402
Installation, Maintenance, and Repair Occupations	75	302
Legal Occupations	11	52
Life, Physical, and Social Science Occupations	5	20
Management Occupations	174	588
Military Specific Occupations	10	48
Office and Administrative Support Occupations	190	710
Personal Care and Service Occupations	38	160
Production Occupations	923	2,330
Protective Service Occupations	23	123
Sales and Related Occupations	230	1,067
Transportation and Material Moving Occupations	139	519
Unknown	382	960

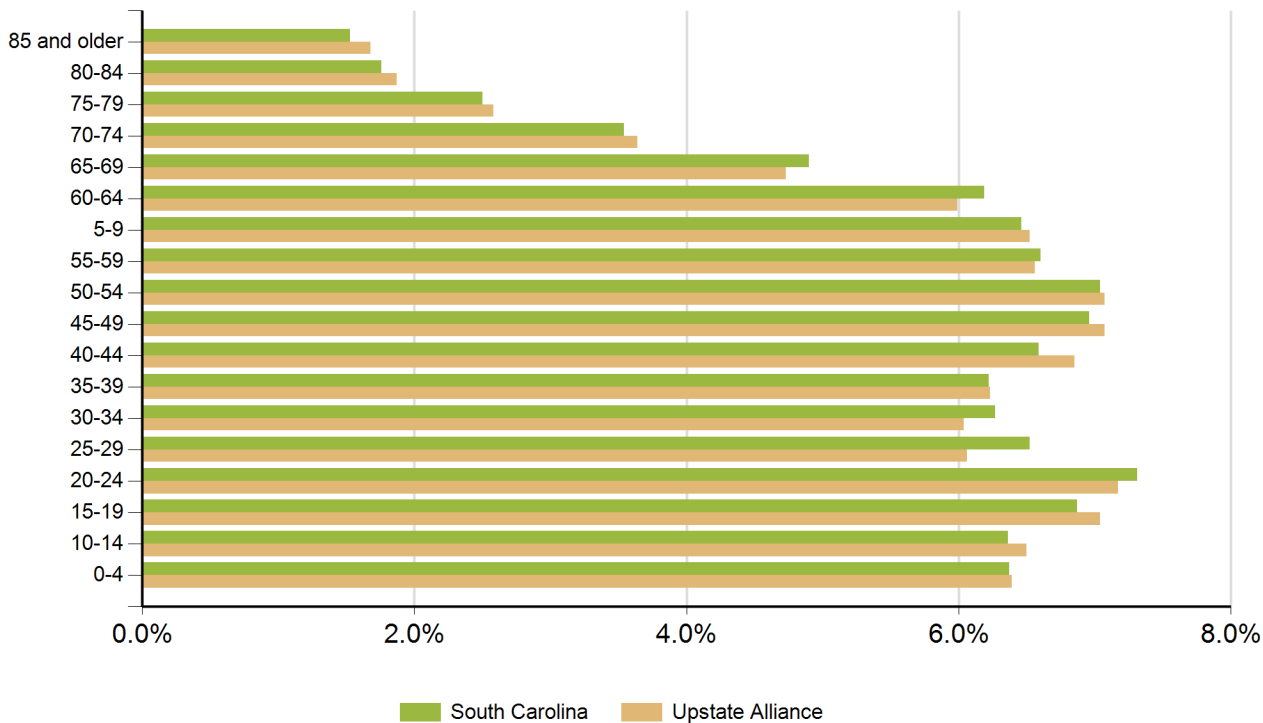
Source: SC Department of Employment & Workforce

Retail Sales



Source: SC Department of Revenue

Population by Age



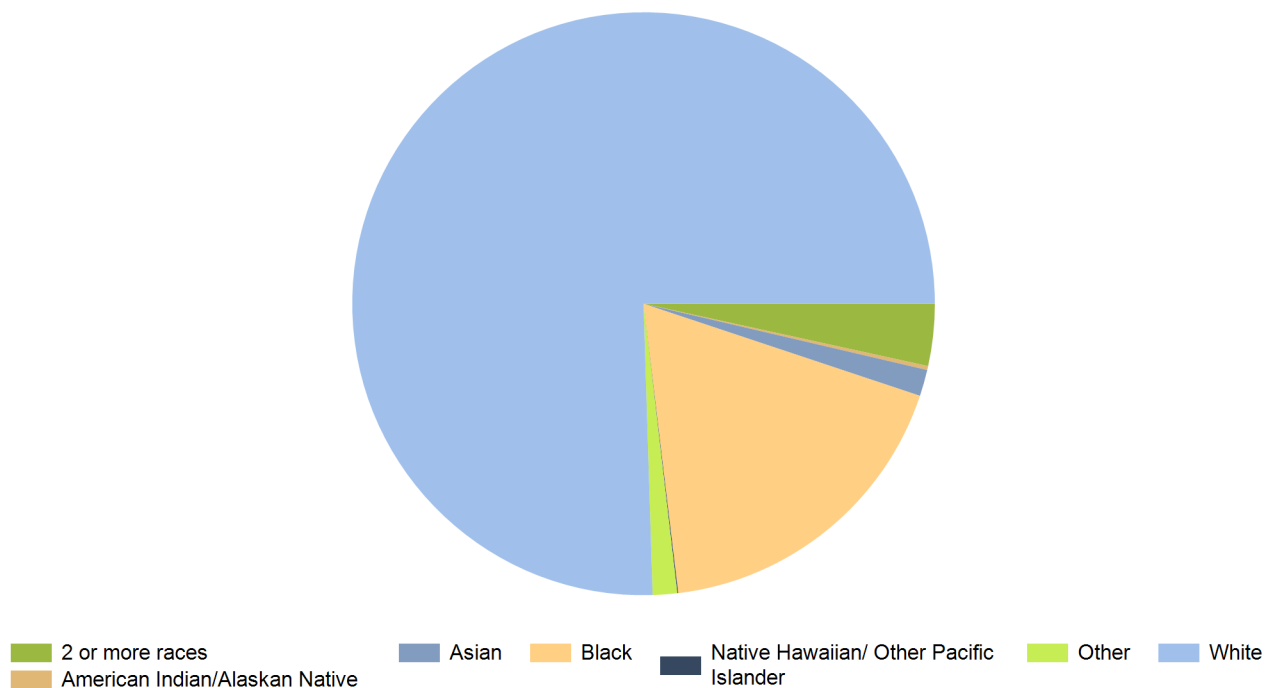
Age Range	Upstate Alliance	South Carolina	United States
0-4	87,886	298,242	20,052,112
5-9	89,626	302,111	20,409,060
10-14	89,397	297,443	20,672,609
15-19	96,748	321,540	21,715,074
20-24	98,497	342,237	22,099,887
25-29	83,294	305,167	21,243,365
30-34	83,090	293,464	20,467,912
35-39	85,631	291,183	19,876,161
40-44	94,166	308,158	20,998,001
45-49	97,248	325,660	22,109,946
50-54	97,181	329,431	22,396,322
55-59	90,178	309,061	20,165,892
60-64	82,324	289,690	17,479,211
65-69	64,997	229,251	13,189,508
70-74	50,066	165,797	9,767,522
75-79	35,527	117,187	7,438,750
80-84	25,700	82,223	5,781,697
85 and older	23,070	71,757	5,673,565

Source: US Census Bureau, American Community Survey

Population by Race

Race	Upstate Alliance	%	South Carolina	%	United States	%
White	1,055,894	75.5%	3,144,146	66.0%	230,592,579	72.0%
Black	251,545	18.0%	1,298,534	27.3%	39,167,010	12.2%
American Indian/Alaskan Native	3,098	0.2%	14,732	0.3%	2,540,309	0.8%
Asian	20,472	1.5%	61,097	1.3%	15,231,962	4.8%
Native Hawaiian/ Other Pacific Islander	716	0.1%	2,128	0.0%	526,347	0.2%
2 or more races	47,980	3.4%	169,670	3.6%	17,464,666	5.5%
Other	18,911	1.4%	74,130	1.6%	14,746,054	4.6%

Source: US Census Bureau, American Community Survey



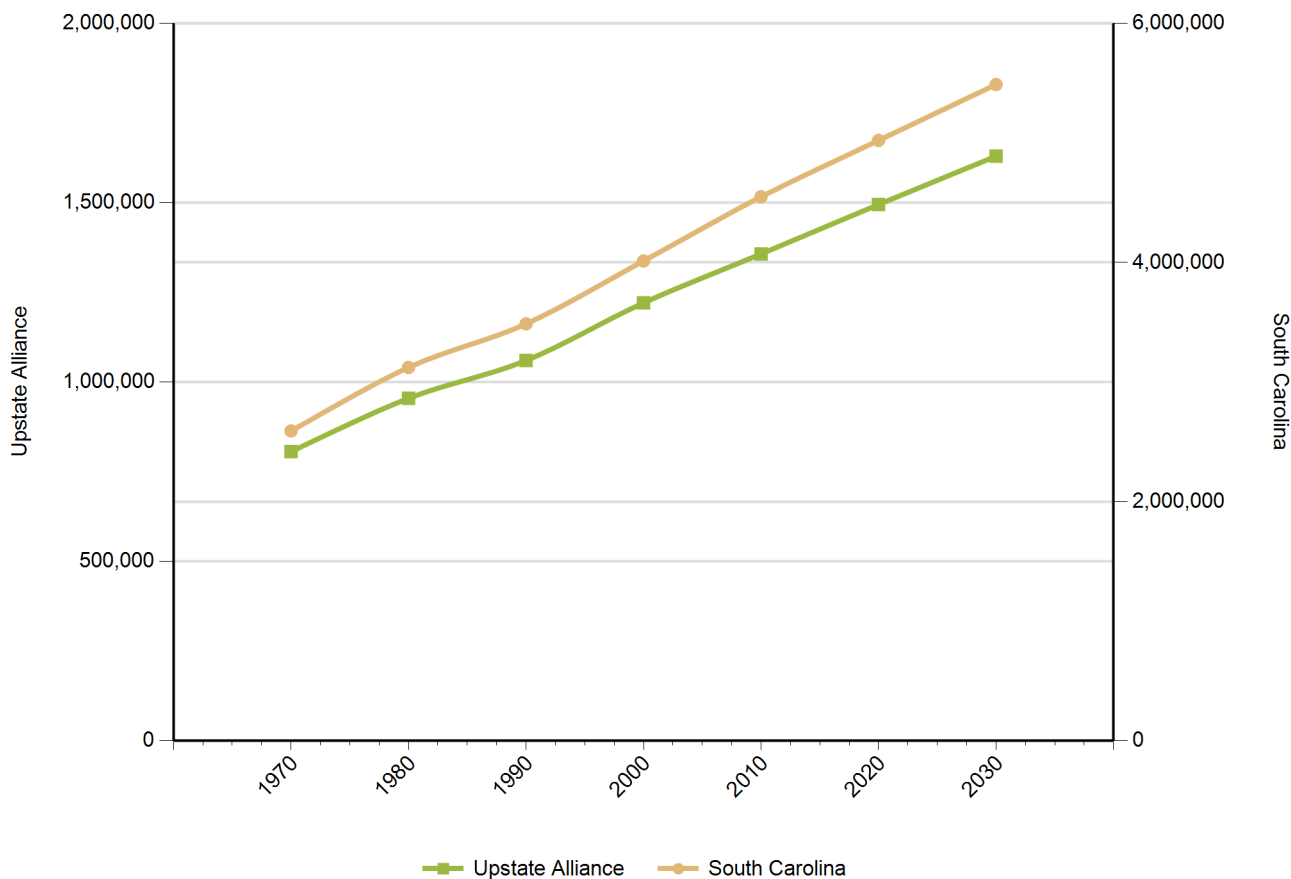
Population by Gender

Gender	Upstate Alliance	South Carolina	United States
Female	707,162	2,403,297	158,289,182
Male	667,464	2,276,305	153,247,412

Source: US Census Bureau, American Community Survey

Population Change

Historical and Projected



Year	Upstate Alliance	South Carolina
1970	806,066	2,590,713
1980	954,504	3,121,820
1990	1,059,891	3,486,310
2000	1,220,542	4,012,012
2010	1,356,900	4,549,150
2020	1,494,650	5,020,400
2030	1,629,510	5,488,460

Source: US Census Bureau

Employers by Size of Establishment

Employees	Upstate Alliance	South Carolina
0 to 4	17,023	73,899
5 to 9	5,295	19,834
10 to 19	3,934	14,291
20 to 49	3,030	10,837
50 to 99	1,232	4,356
100 to 249	705	2,703
250 to 499	199	817
500 to 999	78	373
1000 +	36	294

Employment by Size of Establishment

Employees	Upstate Alliance	South Carolina
0 to 4	26,627	109,610
5 to 9	35,112	131,662
10 to 19	53,807	194,553
20 to 49	91,851	330,019
50 to 99	85,386	300,324
100 to 249	104,281	406,869
250 to 499	69,517	282,239
500 to 999	53,677	253,521
1000 +	81,237	754,506

Source: SC Department of Employment & Workforce - Q4 2015

20 Largestest Employers

(Listed Alphabetically)

Corporation Name

GREENVILLE HEALTH SYSTEM

SCHOOL DISTRICT OF GREENVILLE COUNT

WAL-MART ASSOCIATES INC

MICHELIN NORTH AMERICA INC

SPARTANBURG REGIONAL MEDICAL CENTER

BMW MANUFACTURING CORP.

CLEMSON UNIVERSITY

MAU INC

SFH INC

INGLES MARKET INC

HUMAN TECHNOLOGIES INC

GHS PARTNERS IN HEALTH INC

ANDERSON AREA MEDICAL CENTER

BI-LO INC.

S B PHILLIPS COMPANY INC

GREENVILLE COUNTY COUNCIL

GE GAS TURBINE GREENVILLE LLC

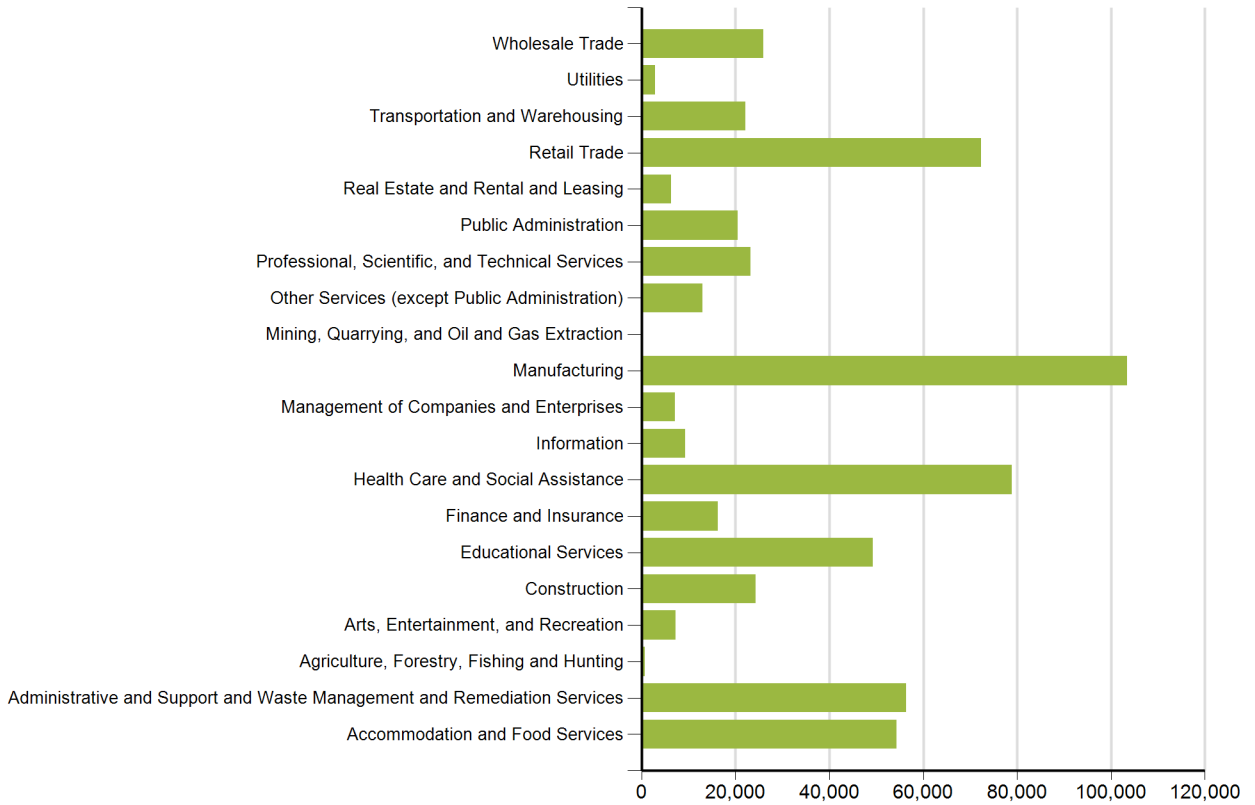
US POSTAL SERVICE

ZF TRANSMISSIONS GREENVILLE LLC

SCHOOL DISTRICT OF PICKENS COUNTY

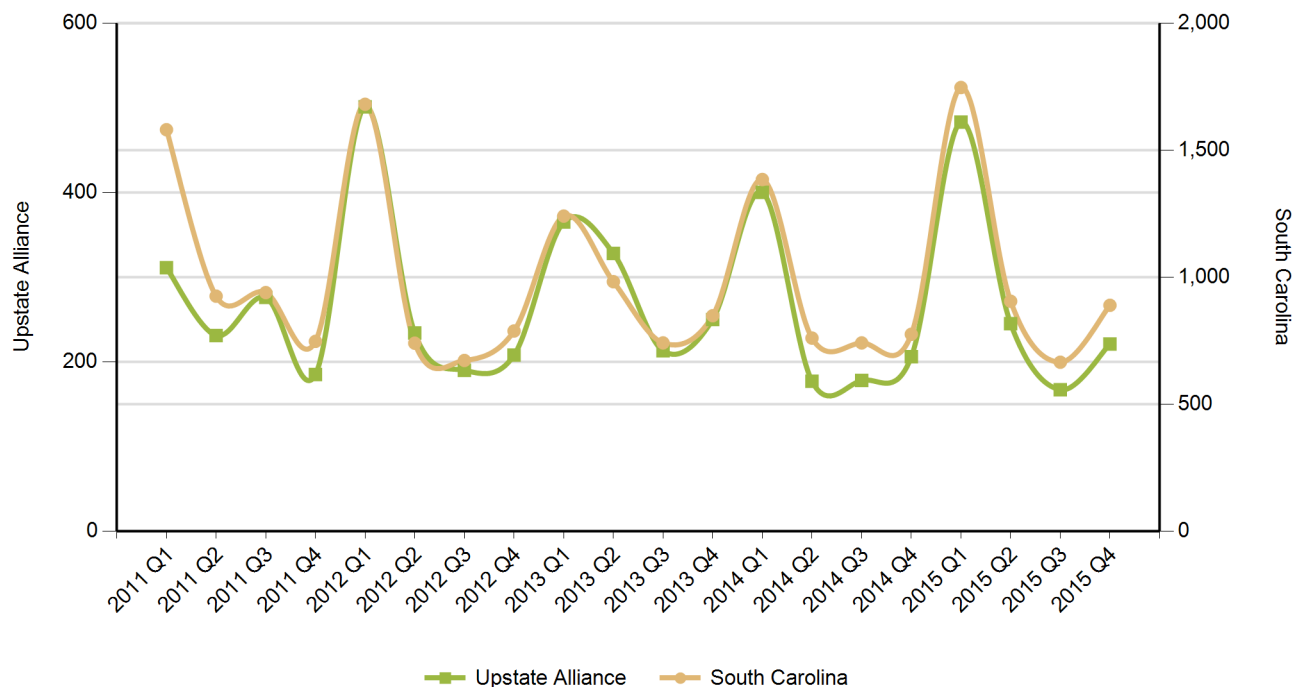
Source: SC Department of Employment & Workforce - Q4 2015

Employment by Industry



Source: SC Department of Employment & Workforce
 Quarterly Census of Employment and Wages (QCEW) - Q4 2015

New Startup Firms



Quarter	Upstate Alliance	South Carolina
2015 Q4	221	889
2015 Q3	167	665
2015 Q2	245	905
2015 Q1	483	1,746
2014 Q4	206	775
2014 Q3	178	741
2014 Q2	177	760
2014 Q1	400	1,384
2013 Q4	250	848
2013 Q3	213	741
2013 Q2	328	982
2013 Q1	365	1,240
2012 Q4	208	788
2012 Q3	190	672
2012 Q2	234	740
2012 Q1	501	1,680
2011 Q4	185	747
2011 Q3	276	939
2011 Q2	231	925
2011 Q1	311	1,580

Note: A firm is included in the count when it does not have a UI Account Number in the previous quarter and has a Setup Date that falls in the quarter displayed.

Source: SC Department of Employment & Workforce

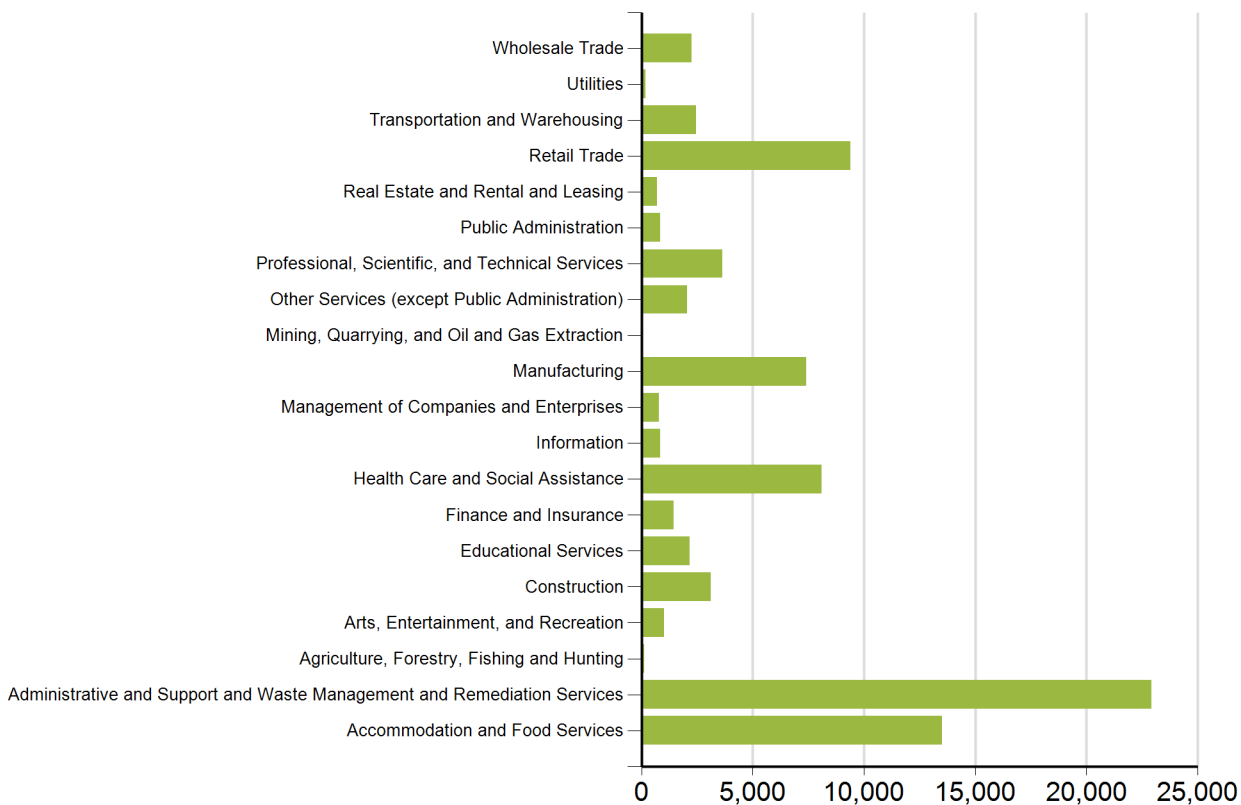
Top 20 Occupational Openings

April 2016

Occupation Name (Soccode)	Job Opening
Heavy and Tractor-Trailer Truck Drivers (53-3032)	1,015
Registered Nurses (29-1141)	754
Industrial Engineers (17-2112)	395
Retail Salespersons (41-2031)	389
First-Line Supervisors of Retail Sales Workers (41-1011)	377
First-Line Supervisors of Food Preparation and Serving Workers (35-1012)	342
Maintenance and Repair Workers, General (49-9071)	335
First-Line Supervisors of Production and Operating Workers (51-1011)	304
Customer Service Representatives (43-4051)	302
First-Line Supervisors of Office and Administrative Support Workers (43-1011)	221
Physical Therapists (29-1123)	219
Laborers and Freight, Stock, and Material Movers, Hand (53-7062)	218
Combined Food Preparation and Serving Workers, Including Fast Food (35-3021)	215
Computer User Support Specialists (15-1151)	191
First-Line Supervisors of Mechanics, Installers, and Repairers (49-1011)	189
Light Truck or Delivery Services Drivers (53-3033)	178
Stock Clerks and Order Fillers (43-5081)	178
Accountants and Auditors (13-2011)	176
Computer Occupations, All Other (15-1199)	171
Sales Representatives, Wholesale and Manufacturing, Except Technical and Scientific Products (41-4012)	170

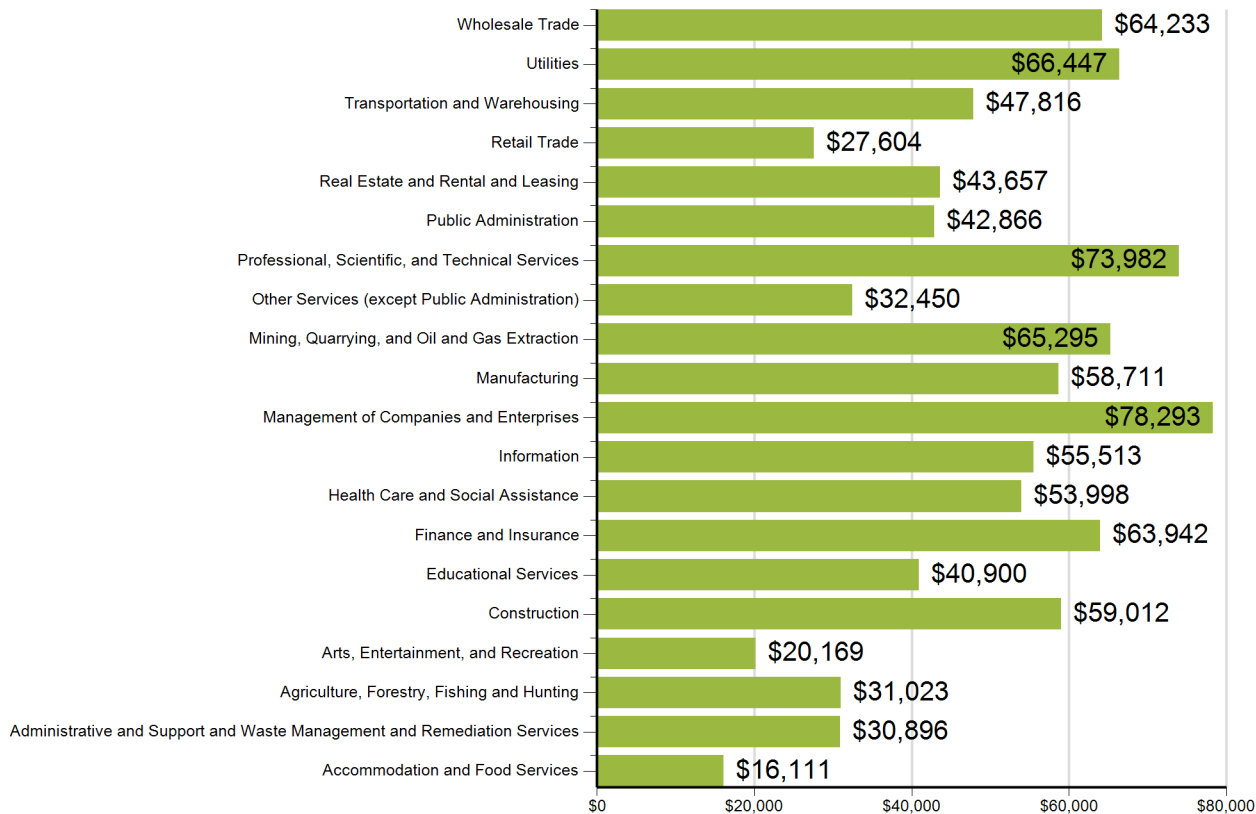
Source: SC Department of Employment & Workforce and The Conference Board's Help Wanted OnLine® Data Series

New Hires by Industry



US Census Bureau, Local Employment Dynamics - Q1 2014

Average Annual Wage by Industry



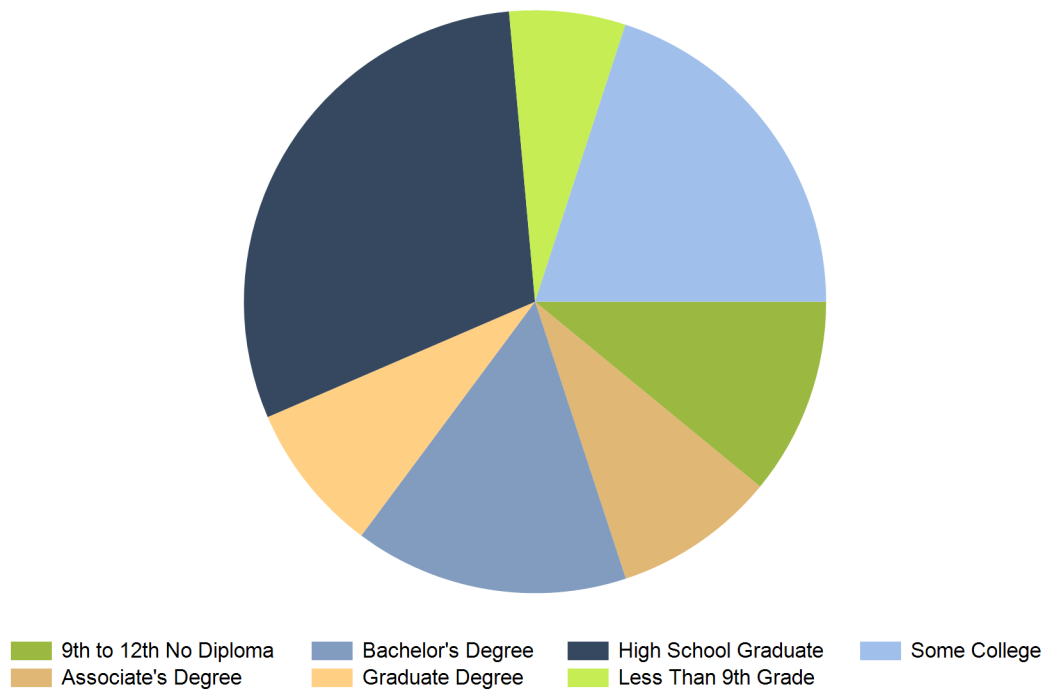
Source: SC Department of Employment & Workforce
 Quarterly Census of Employment and Wages (QCEW) - Q4
 2015

Age of Workers by Industry

Industry	14-18	19-21	22-24	25-34	35-44	45-54	55-64	65+
Total, All Industries	11,102	25,863	35,715	119,066	124,790	128,819	91,874	28,447
Agriculture, Forestry, Fishing and Hunting	0	21	17	119	137	179	142	70
Mining, Quarrying, and Oil and Gas Extraction	0	0	5	23	40	72	71	6
Utilities	0	35	76	661	1,015	1,331	1,313	167
Construction	130	581	919	4,368	5,345	5,392	3,654	1,231
Manufacturing	187	1,491	3,704	16,913	24,992	29,856	19,749	3,401
Wholesale Trade	74	390	949	4,943	6,603	6,966	4,827	1,415
Retail Trade	2,924	6,928	6,909	15,235	11,811	11,909	8,950	4,053
Transportation and Warehousing	57	592	833	3,088	4,049	4,964	3,356	879
Information	108	266	558	2,785	2,710	2,085	1,284	342
Finance and Insurance	40	222	821	4,120	4,002	3,887	2,680	758
Real Estate and Rental and Leasing	18	128	297	1,189	1,240	1,299	977	452
Professional, Scientific, and Technical Services	122	418	1,136	5,234	5,403	5,514	4,302	1,768
Management of Companies and Enterprises	116	227	331	1,386	1,793	2,118	1,687	370
Administrative and Support and Waste Management and Remediat	399	3,372	5,062	13,780	11,187	10,274	6,363	2,389
Educational Services	271	540	1,780	9,373	12,037	12,916	11,285	3,554
Health Care and Social Assistance	197	1,297	3,276	15,609	16,664	15,686	12,059	3,312
Arts, Entertainment, and Recreation	542	655	584	1,376	1,188	1,064	752	471
Accommodation and Food Services	5,634	7,754	6,813	12,467	7,720	6,263	3,222	1,465
Other Services (except Public Administration)	189	616	877	2,626	2,619	2,764	1,977	1,122
Public Administration	54	306	744	3,754	4,213	4,253	3,199	1,205

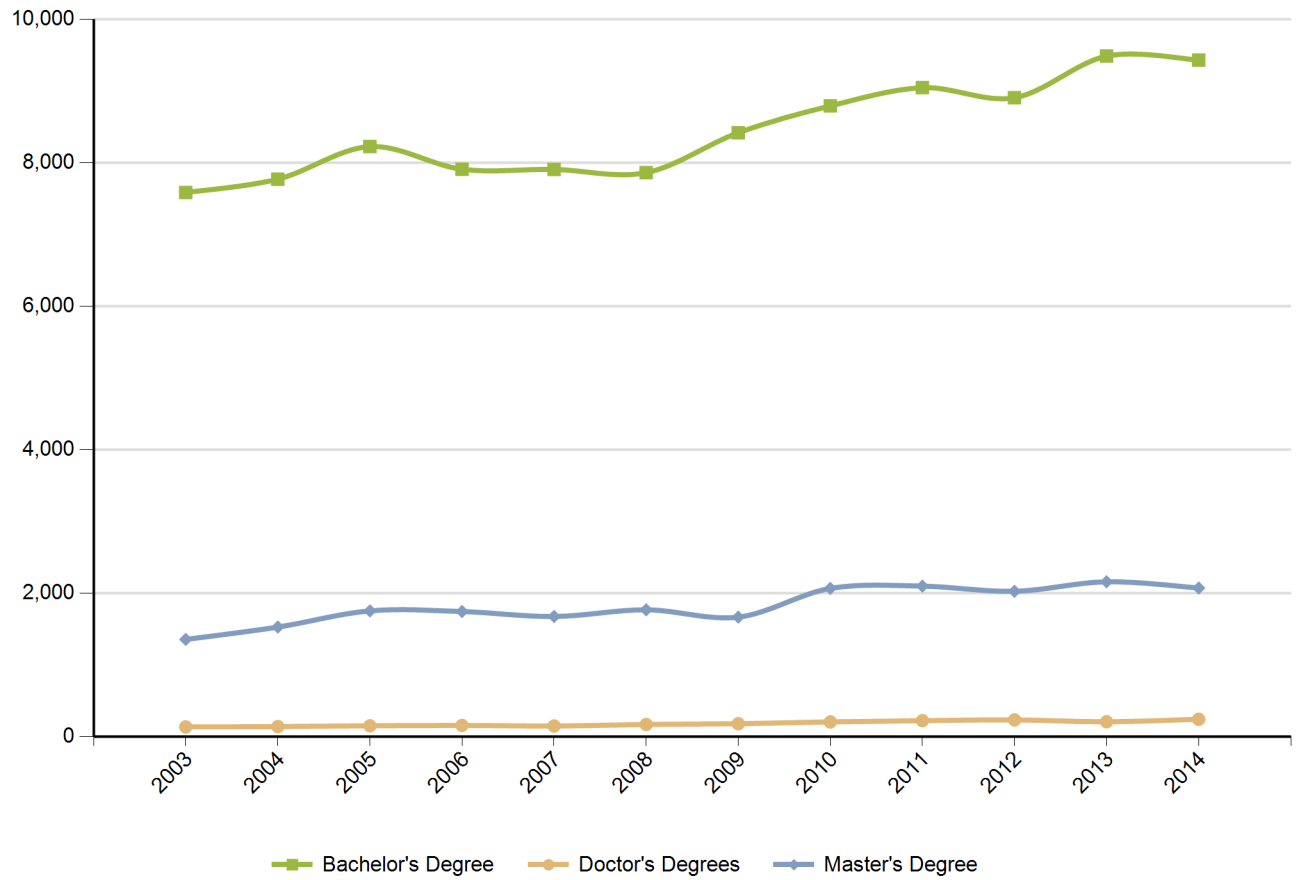
Source: US Census Bureau, Local Employment Dynamics - Q1 2014

Educational Attainment (Population 25 Years and Older)



Source: US Census Bureau, American Community Survey - 2013 5-Year Estimates

Graduate Trends



Source: Institute of Education Sciences (IES), Integrated Postsecondary Education Data System

Educational Institutions

Academy of Hair Technology
3715 E North St Ste F
Greenville, SC 29615
864.322.0300
<http://www.hairchamps.com>
2014 Degrees Awarded: 57

Bob Jones University
1700 Wade Hampton Boulevard
Greenville, SC 29614
864.242.5100
<http://www.bju.edu>
2014 Degrees Awarded: 827

Charzanne Beauty College
1549 Hwy 72 E
Greenwood, SC 29649
864.223.7321
<http://charzannebeautycollege.com>
2014 Degrees Awarded: 20

Converse College
580 E Main St
Spartanburg, SC 29302
864.596.9000
<http://www.converse.edu>
2014 Degrees Awarded: 259

Forrest College
601 E River Street
Anderson, SC 29624
864.225.7653
<http://www.forrestcollege.edu>
2014 Degrees Awarded: 62

Greenville Technical College
738 S Pleasantburg Dr
Greenville, SC 29607
864.250.8000
<http://www.gvltec.edu>
2014 Degrees Awarded: 2252

Kenneth Shuler School of Cosmetology-Greenville
3528-A Earl E. Morris Jr. Highway
Greenville, SC 29611
864.269.6886
<http://kennethshuler.com>
2014 Degrees Awarded: 69

Lander University
320 Stanley Avenue
Greenwood, SC 29649
864.388.8000
<http://www.lander.edu>
2014 Degrees Awarded: 583

Anderson University
316 Boulevard
Anderson, SC 29621
864.231.2000
<http://www.andersonuniversity.edu>
2014 Degrees Awarded: 559

Brown Mackie College-Greenville
Two Liberty Square, 75 Beattie Plac
Greenville, SC 29601
864.239.5300
<http://www.brownmackie.edu>
2014 Degrees Awarded: 299

Clemson University
201 Sikes Hall
Clemson, SC 29634
864.656.4636
<http://www.clemson.edu>
2014 Degrees Awarded: 5207

Erskine College
2 Washington St
Due West, SC 29639
864.379.2131
<http://www.erskine.edu>
2014 Degrees Awarded: 133

Furman University
3300 Poinsett Highway
Greenville, SC 29613
864.294.2000
<http://www.furman.edu>
2014 Degrees Awarded: 686

ITT Technical Institute-Greenville
Six Independence Pointe
Greenville, SC 29615
864.288.0777
<http://www.itt-tech.edu>
2014 Degrees Awarded: 113

Kenneth Shuler School of Cosmetology-Spartanburg
1515 John B White SR Blvd
Spartanburg, SC 29301
864.587.6000
<http://www.kennethshuler.com>
2014 Degrees Awarded: 61

Limestone College
1115 College Drive
Gaffney, SC 29340
800.795.7151
<http://www.limestone.edu>
2014 Degrees Awarded: 682

North Greenville University
7801 N. Tigerville Road
Tigerville, SC 29688
864.977.7000
<http://www.ngu.edu>
2014 Degrees Awarded: 461

Paul Mitchell the School-Greenville
1215 A Woodruff Road
Greenville, SC 29607
864.640.8111
<http://greenville.paulmitchell.edu/>
2014 Degrees Awarded: 1

Presbyterian College
503 South Broad Street
Clinton, SC 29325
864.833.2820
<http://www.presby.edu>
2014 Degrees Awarded: 311

Salon 496 Barber Academy
496 S. Pleasantburg Drive
Greenville, SC 29607
864.242.0800
<http://salon496.org>
2014 Degrees Awarded: 7

Southern Wesleyan University
907 Wesleyan Drive
Central, SC 29630
864.644.5000
<http://www.swu.edu>
2014 Degrees Awarded: 591

Spartanburg Methodist College
1000 Powell Mill Road
Spartanburg, SC 29301
864.587.4000
<http://www.smcsc.edu/>
2014 Degrees Awarded: 204

Tri-County Technical College
7900 U.S. Hwy 76
Pendleton, SC 29670
864.646.1500
<http://www.tctc.edu>
2014 Degrees Awarded: 1663

University of South Carolina-Upstate
800 University Way
Spartanburg, SC 29303
864.503.5000
<http://www.uscupstate.edu>
2014 Degrees Awarded: 1181

Palmetto Beauty School
2601 East Main Street
Spartanburg, SC 29307
864.579.2550
<http://www.palmettocosmo.com>
2014 Degrees Awarded: 27

Piedmont Technical College
620 North Emerald Road
Greenwood, SC 29646
864.941.8324
<http://www.ptc.edu>
2014 Degrees Awarded: 1007

Regency Beauty Institute-Spartanburg
225 W Black Stock Rd, Suite OP3
Spartanburg, SC 29301
800.787.6456
<http://www.regency.edu>
2014 Degrees Awarded: 25

Sherman College of Straight Chiropractic
2020 Springfield Rd
Spartanburg, SC 29316
864.578.8770
<http://www.sherman.edu>
2014 Degrees Awarded: 54

Spartanburg Community College
107 Community College Drive
Spartanburg, SC 29303
864.592.4600
<http://www.sccsc.edu>
2014 Degrees Awarded: 857

Strayer University-South Carolina
555 N Pleasantburg Dr Ste 300
Greenville, SC 29607
864.250.7000
<http://www.strayer.edu/south-carolina/greenville>
2014 Degrees Awarded: 356

University of South Carolina-Union
309 East Academy St
Union, SC 29379
864.429.8728
<http://uscunion.sc.edu/>
2014 Degrees Awarded: 53

Virginia College-Greenville
78 Global Dr Ste 200
Greenville, SC 29607
864.679.4922
<http://vc.edu>
2014 Degrees Awarded: 238

Virginia College-Spartanburg
8150 Warren H. Abernathy Highway
Spartanburg, SC 29301
864.504.3200
<http://vc.edu>
2014 Degrees Awarded: 195

Wofford College
429 N Church St
Spartanburg, SC 29303
864.597.4000
<http://www.wofford.edu>
2014 Degrees Awarded: 411

Source: Institute of Education Sciences (IES), Integrated Postsecondary Education Data System