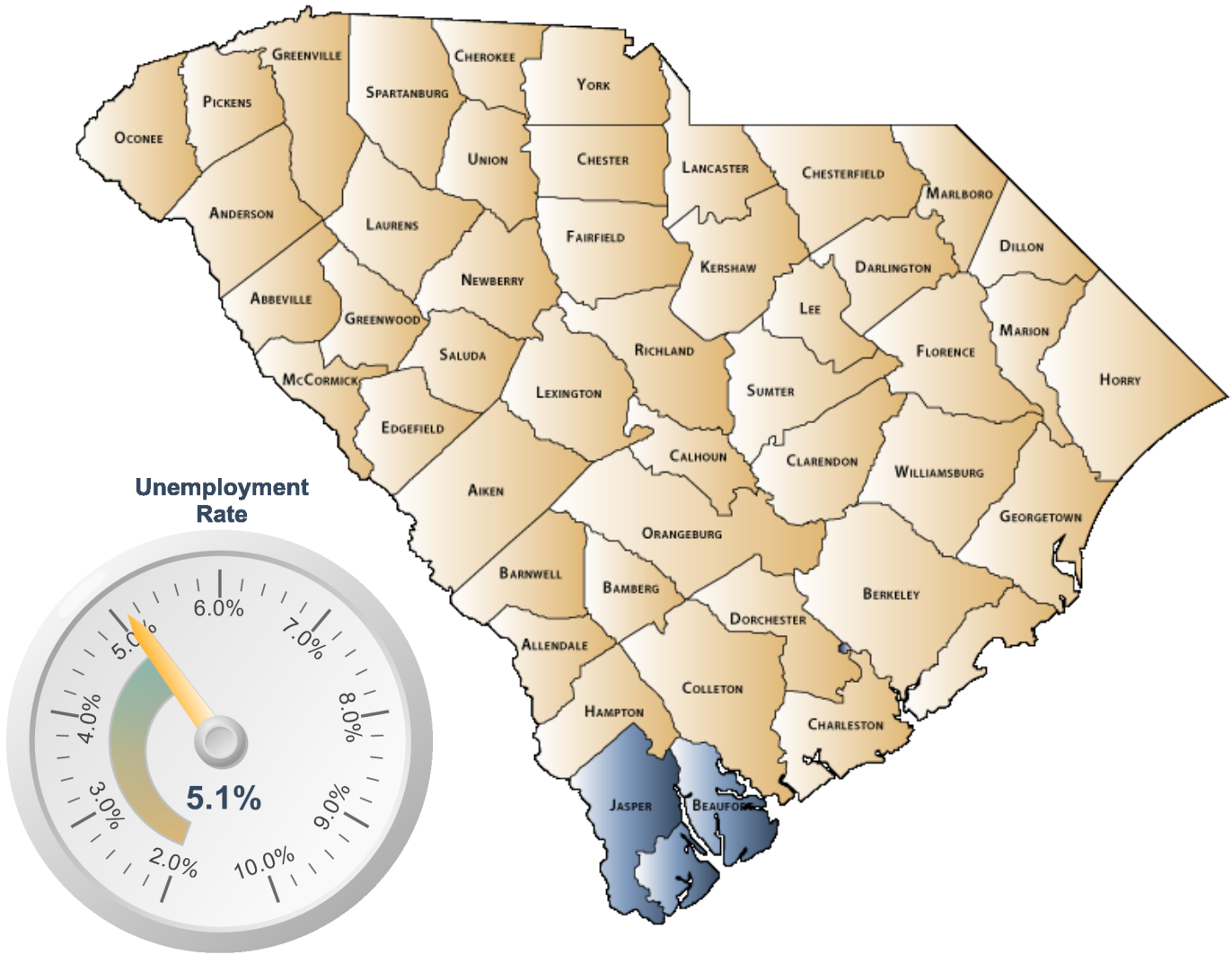


ECONOMIC PROFILE

Lowcountry Economic Network



S.C. Department of Employment & Workforce
Labor Market Information

1550 Gadsden Street, PO Box 995
Columbia, SC 29202
803-737-2660

www.SCWorkforceInfo.com

<http://LowcountryAlliance.com/>

Updated: 07/21/2016

Table of Contents

1. Economic Data

Annual Unemployment Rates.....	3
Monthly Unemployment Rates.....	4
Area Job Openings.....	5
Unemployment Insurance	
Demographic Data.....	6
Industry Data.....	7
Occupation Data.....	8
Retail Sales.....	9

2. Demographic Data

Population	
Age.....	10
Race.....	11
Gender.....	11
Change.....	12
Employer Data	
Size of Establishments.....	13
Employment by Size of Establishment.....	13
20 Largest Employers.....	14

3. Industry Data

Employment by Industry.....	15
New Startup Firms.....	16
Top Occupational Openings.....	17
New Hires by Industry.....	18
Average Annual Wage by Industry.....	19
Age of Workers by Industry.....	20

4. Education Data

Educational Attainment.....	21
Graduate Trends.....	22
Educational Institutions.....	23

***Disclaimer: All data provided is an aggregate of the counties' data that comprise the Lowcountry Economic Network**

Annual Unemployment Rate (Unadjusted)

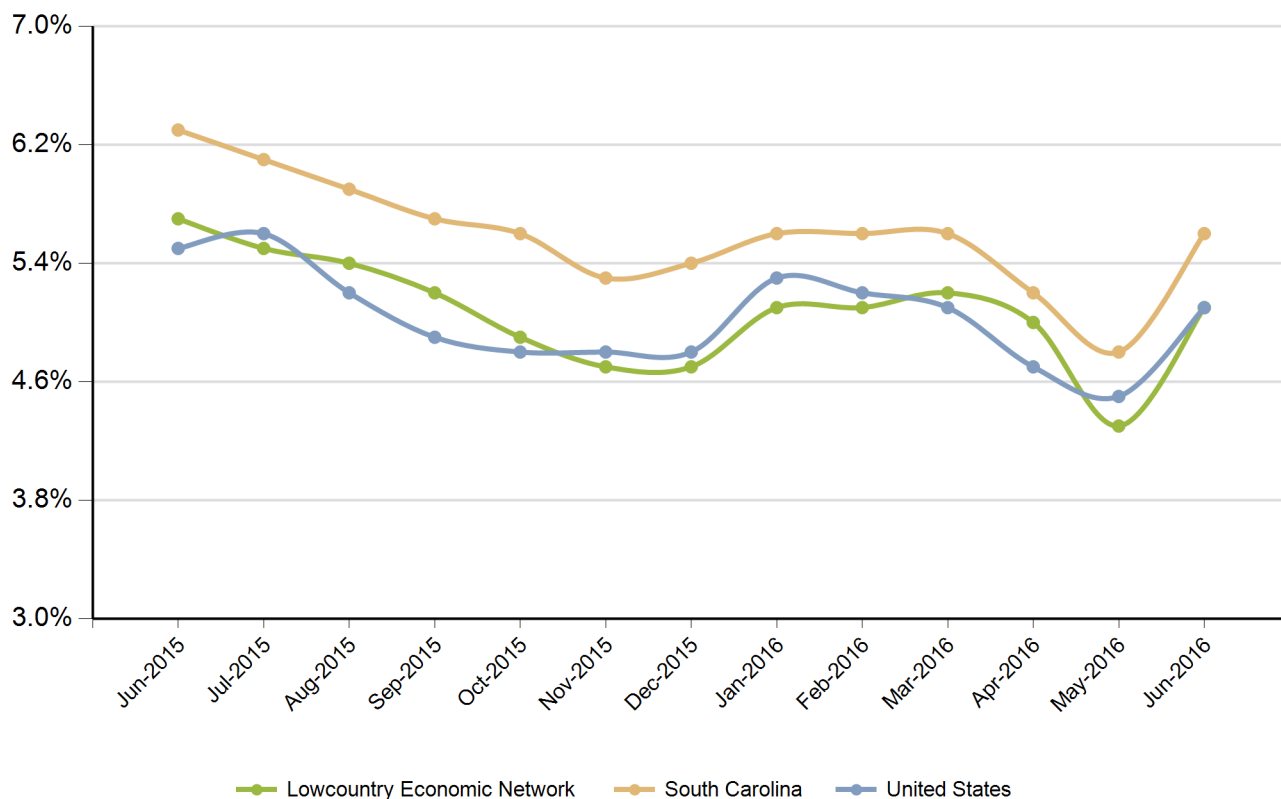


Year	Lowcountry Economic Network			South Carolina			United States		
	Employed	Unemployed	Unemp Rate	Employed	Unemployed	Unemp Rate	Employed	Unemployed	Unemp Rate
2005	68,165	3,516	4.9%	1,929,233	139,366	6.7%	141,730,000	7,591,000	5.1%
2006	69,549	3,504	4.8%	1,973,337	135,760	6.4%	144,427,000	7,001,000	4.6%
2007	70,719	3,249	4.4%	2,005,686	120,205	5.7%	146,047,000	7,078,000	4.6%
2008	69,808	3,988	5.4%	1,996,409	145,823	6.8%	145,362,000	8,924,000	5.8%
2009	66,452	6,527	8.9%	1,910,670	242,075	11.2%	139,877,000	14,265,000	9.3%
2010	69,510	6,725	8.8%	1,915,045	240,623	11.2%	139,064,000	14,825,000	9.6%
2011	69,683	6,781	8.9%	1,945,900	229,623	10.6%	139,869,000	13,747,000	8.9%
2012	70,899	5,890	7.7%	1,983,506	200,607	9.2%	142,469,000	12,506,000	8.1%
2013	73,309	5,056	6.5%	2,022,444	166,924	7.6%	143,929,000	11,460,000	7.4%
2014	76,082	4,569	5.7%	2,074,277	142,505	6.4%	146,305,000	9,617,000	6.2%
2015	78,599	4,478	5.4%	2,122,573	134,504	6.0%	148,834,000	8,296,000	5.3%

Source: SC Department of Employment & Workforce

Monthly Unemployment Rate (Unadjusted)

Past 13 Months



Period	Lowcountry Economic Network	South Carolina	United States
Jun-2015	5.7%	6.3%	5.5%
Jul-2015	5.5%	6.1%	5.6%
Aug-2015	5.4%	5.9%	5.2%
Sep-2015	5.2%	5.7%	4.9%
Oct-2015	4.9%	5.6%	4.8%
Nov-2015	4.7%	5.3%	4.8%
Dec-2015	4.7%	5.4%	4.8%
Jan-2016	5.1%	5.6%	5.3%
Feb-2016	5.1%	5.6%	5.2%
Mar-2016	5.2%	5.6%	5.1%
Apr-2016	5.0%	5.2%	4.7%
May-2016	4.3%	4.8%	4.5%
Jun-2016	5.1%	5.6%	5.1%

Source: SC Department of Employment & Workforce

Area Job Openings

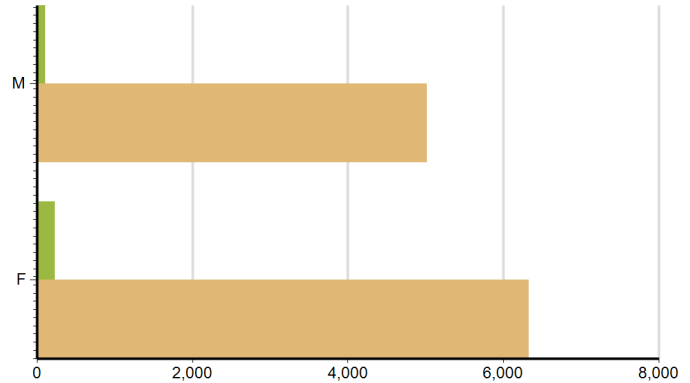
Period	Lowcountry Economic Network				South Carolina			
	Employed	Unemployed	Unemp Rate	Job Openings	Employed	Unemployed	Unemp Rate	Job Openings
Jun-2015	80,505	4,840	5.7%	2,479	2,117,636	132,841	5.9%	73,702
Jul-2015	81,686	4,753	5.5%	2,421	2,122,043	129,098	5.7%	73,050
Aug-2015	80,705	4,609	5.4%	2,113	2,126,323	126,465	5.6%	71,760
Sep-2015	79,099	4,335	5.2%	2,244	2,130,209	125,030	5.5%	71,372
Oct-2015	79,169	4,089	4.9%	2,228	2,133,670	124,395	5.5%	71,138
Nov-2015	78,565	3,844	4.7%	2,147	2,136,651	124,159	5.5%	73,219
Dec-2015	77,859	3,875	4.7%	1,949	2,138,997	124,433	5.5%	60,418
Jan-2016	77,820	4,220	5.1%	2,245	2,150,533	124,506	5.5%	56,427
Feb-2016	78,872	4,222	5.1%	2,604	2,162,709	125,494	5.5%	64,238
Mar-2016	80,338	4,422	5.2%	2,788	2,174,655	131,324	5.7%	61,889
Apr-2016	81,490	4,309	5.0%	2,878	2,181,794	134,295	5.8%	67,021
May-2016	82,499	3,729	4.3%	2,398	2,185,072	129,861	5.6%	63,126
Jun-2016	84,303	4,570	5.1%	2,486	2,185,181	125,591	5.4%	61,518

Source: SC Department of Employment & Workforce, The Conference Board's Help Wanted OnLine® Data Series
South Carolina Data is Seasonally Adjusted

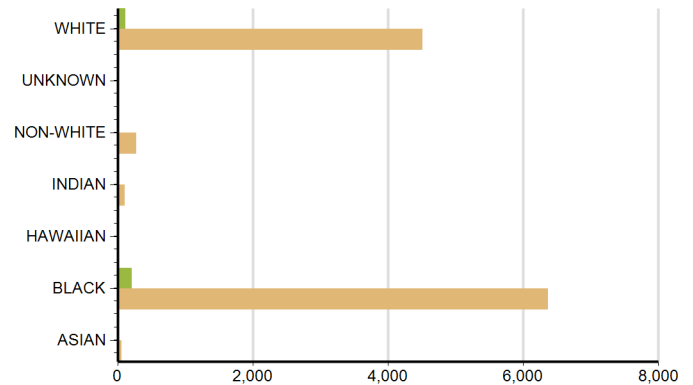
Characteristics of Unemployment Insurance Claimants

June-2016

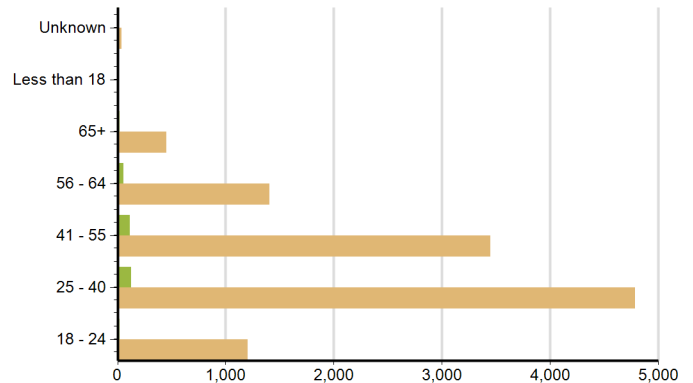
Gender	Lowcountry Economic Network	South Carolina
Female	231	6,325
Male	107	5,020



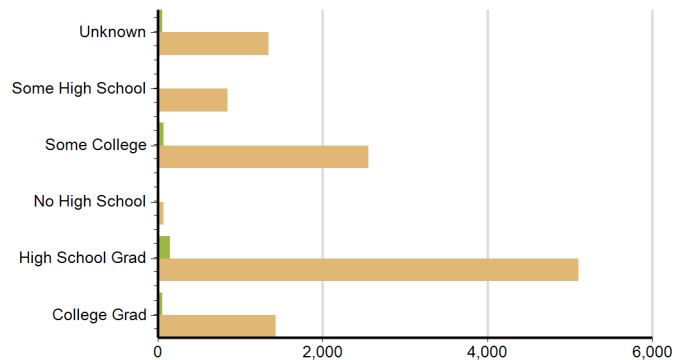
Race	Lowcountry Economic Network	South Carolina
ASIAN	1	64
BLACK	211	6,367
HAWAIIAN	2	16
INDIAN	2	106
NON-WHITE	5	282
WHITE	117	4,509



Age Group	Lowcountry Economic Network	South Carolina
18 - 24	20	1,206
25 - 40	125	4,786
41 - 55	114	3,448
56 - 64	55	1,408
65+	20	454
Unknown	4	39



Education	Lowcountry Economic Network	South Carolina
College Grad	52	1,426
High School Grad	147	5,103
Some College	67	2,553
Some High School	18	847
Unknown	54	1,344



Source: SC Department of Employment & Workforce

Characteristics of Unemployment Insurance Claims by Industry

Industry Groups with Largest Number of Claims

June-2016



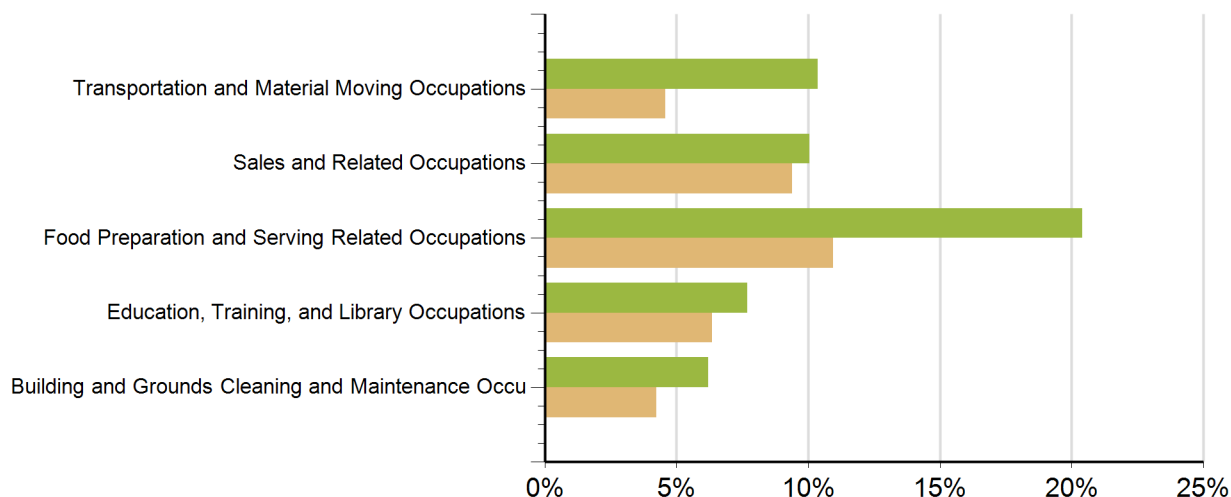
Industry	Lowcountry Economic Network	South Carolina
Manufacturing	6	1,769
Transportation and Warehousing	48	450
Professional, Scientific, and Technical Servi	8	471
Administrative and Support and Waste Manageme	20	1,795
Other Services (except Public Administration)	43	386
Unknown	41	1,123
Retail Trade	36	1,089
Finance and Insurance	1	181
Wholesale Trade	1	347
Health Care and Social Assistance	23	1,069
Utilities	1	13
Construction	10	457
Arts, Entertainment, and Recreation	12	96
Accommodation and Food Services	58	1,138
Public Administration	3	190
Information	1	104
Real Estate and Rental and Leasing	12	149
Educational Services	14	406

Source: SC Department of Employment & Workforce

Characteristics of Unemployment Insurance Claims by Occupation

Occupation Groups with Largest Number of Claims

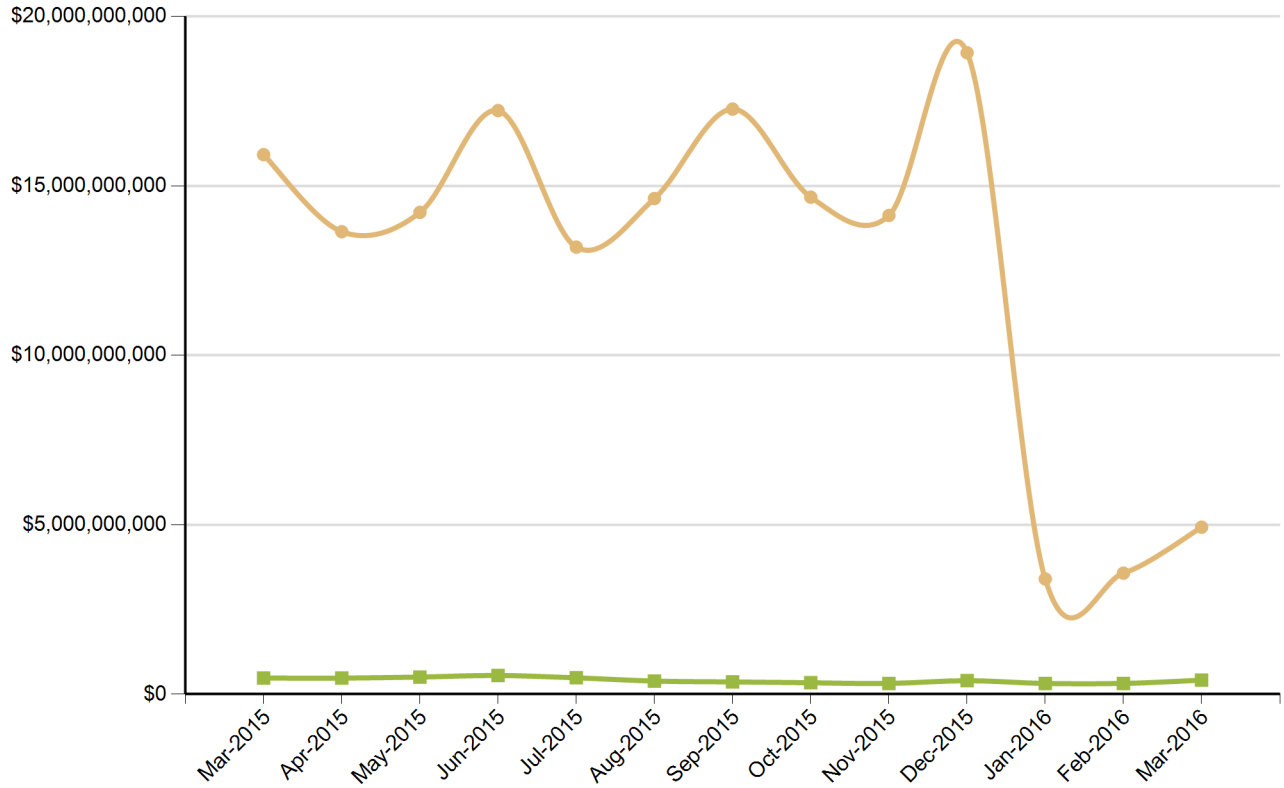
June-2016



Occupation	Lowcountry Economic Network	South Carolina
Architecture and Engineering Occupations	3	157
Building and Grounds Cleaning and Maintenance Occu	21	480
Business and Financial Operations Occupations	9	352
Community and Social Service Occupations	3	117
Computer and Mathematical Occupations	3	165
Construction and Extraction Occupations	13	551
Education, Training, and Library Occupations	26	723
Farming, Fishing, and Forestry Occupations	1	47
Food Preparation and Serving Related Occupations	69	1,245
Healthcare Practitioners and Technical Occupations	3	174
Healthcare Support Occupations	13	402
Installation, Maintenance, and Repair Occupations	5	302
Legal Occupations	1	52
Management Occupations	16	588
Military Specific Occupations	3	48
Office and Administrative Support Occupations	15	710
Personal Care and Service Occupations	6	160
Production Occupations	7	2,330
Protective Service Occupations	2	123
Sales and Related Occupations	34	1,067
Transportation and Material Moving Occupations	35	519
Unknown	50	960

Source: SC Department of Employment & Workforce

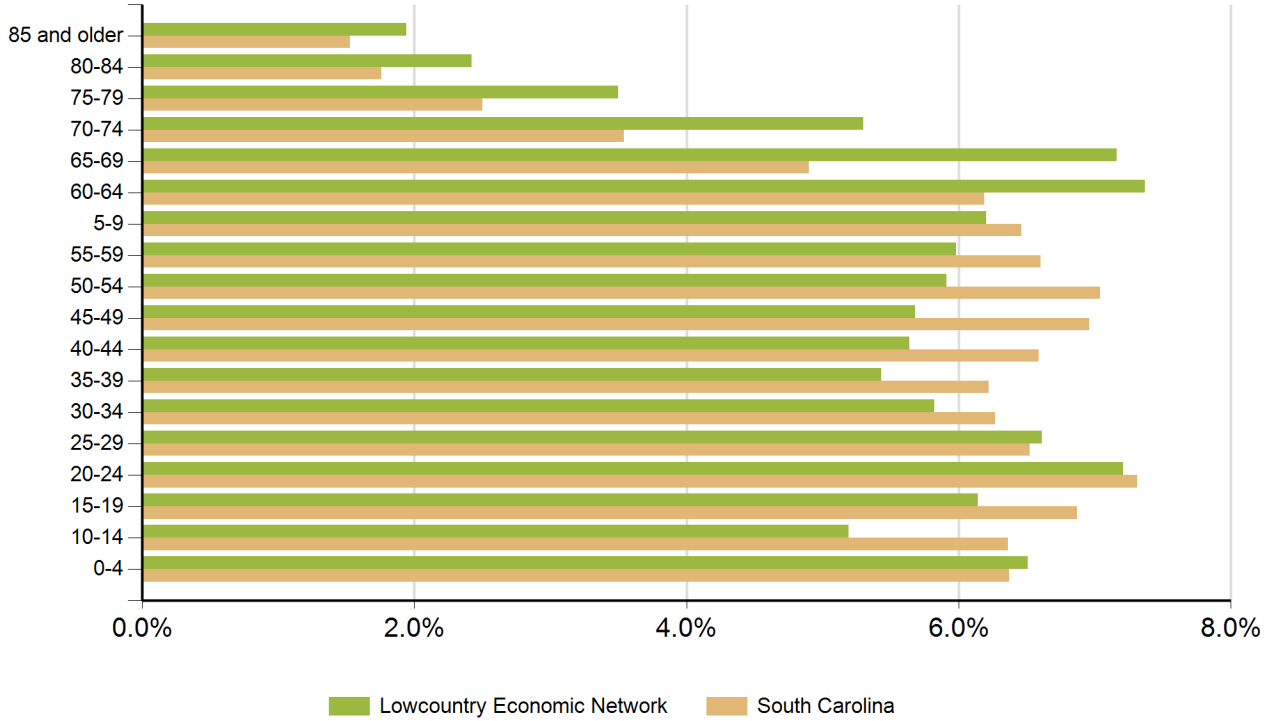
Retail Sales



Source: SC Department of Revenue

Lowcountry Economic Network South Carolina

Population by Age



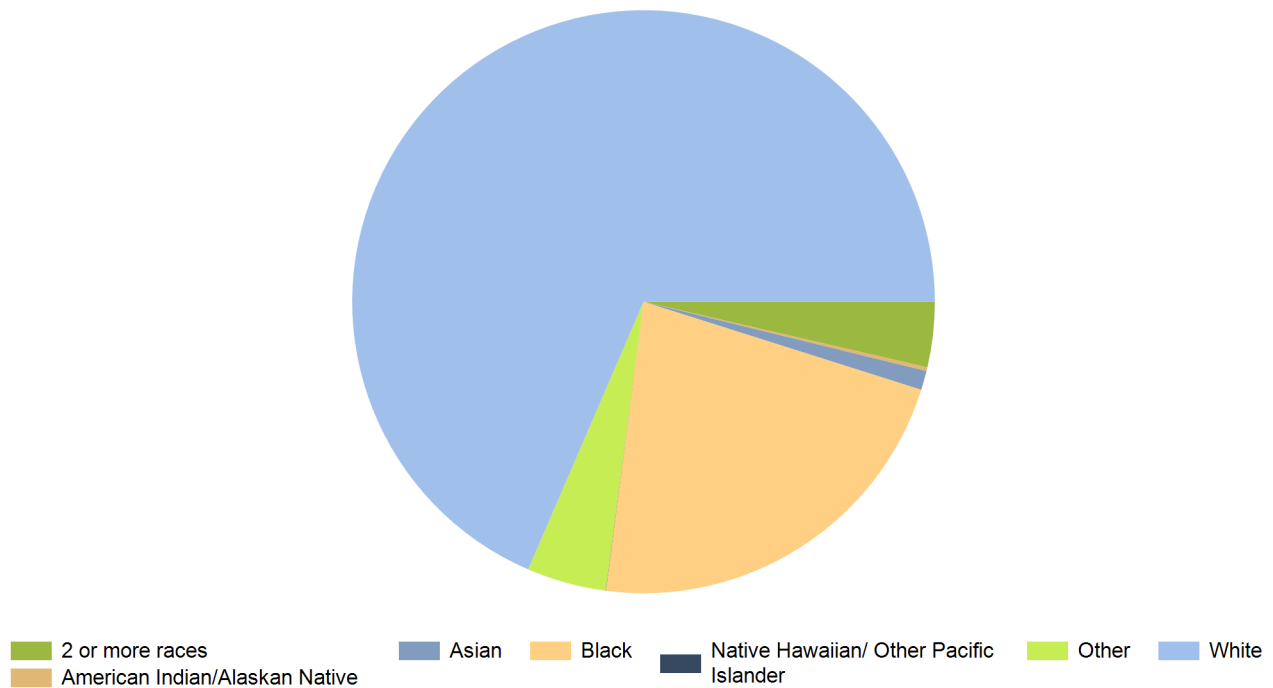
Age Range	Lowcountry Economic Network	South Carolina	United States
0-4	12,416	298,242	20,052,112
5-9	11,819	302,111	20,409,060
10-14	9,892	297,443	20,672,609
15-19	11,705	321,540	21,715,074
20-24	13,749	342,237	22,099,887
25-29	12,600	305,167	21,243,365
30-34	11,097	293,464	20,467,912
35-39	10,355	291,183	19,876,161
40-44	10,760	308,158	20,998,001
45-49	10,842	325,660	22,109,946
50-54	11,275	329,431	22,396,322
55-59	11,409	309,061	20,165,892
60-64	14,050	289,690	17,479,211
65-69	13,666	229,251	13,189,508
70-74	10,114	165,797	9,767,522
75-79	6,686	117,187	7,438,750
80-84	4,622	82,223	5,781,697
85 and older	3,705	71,757	5,673,565

Source: US Census Bureau, American Community Survey

Population by Race

Race	Lowcountry Economic Network	%	South Carolina	%	United States	%
White	133,105	68.5%	3,144,146	66.0%	230,592,579	72.0%
Black	43,087	22.2%	1,298,534	27.3%	39,167,010	12.2%
American Indian/Alaskan Native	420	0.2%	14,732	0.3%	2,540,309	0.8%
Asian	2,053	1.1%	61,097	1.3%	15,231,962	4.8%
Native Hawaiian/ Other Pacific Islander	29	0.0%	2,128	0.0%	526,347	0.2%
2 or more races	7,016	3.6%	169,670	3.6%	17,464,666	5.5%
Other	8,560	4.4%	74,130	1.6%	14,746,054	4.6%

Source: US Census Bureau, American Community Survey



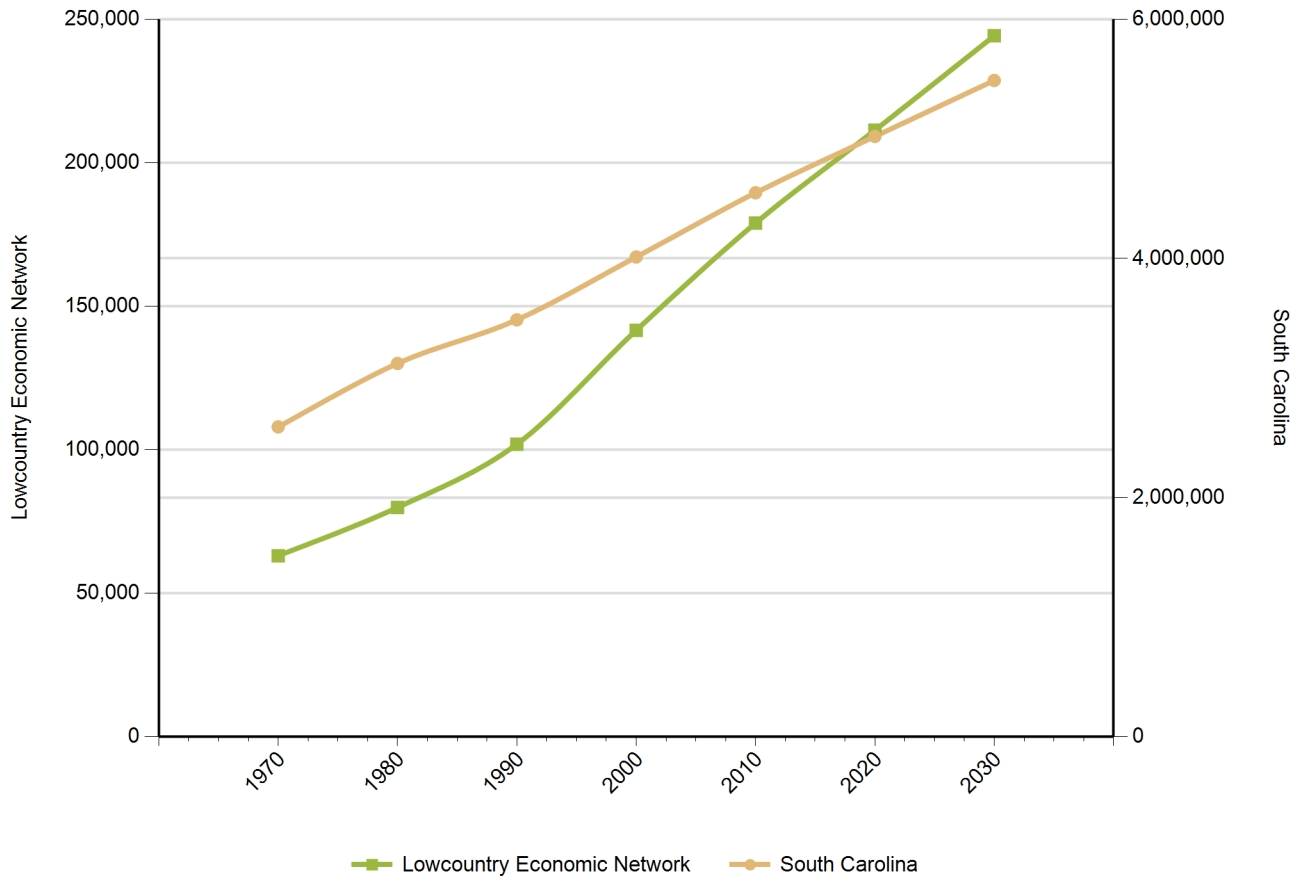
Population by Gender

Gender	Lowcountry Economic Network	South Carolina	United States
Female	95,836	2,403,297	158,289,182
Male	94,926	2,276,305	153,247,412

Source: US Census Bureau, American Community Survey

Population Change

Historical and Projected



Year	Lowcountry Economic Network	South Carolina
1970	63,021	2,590,713
1980	79,868	3,121,820
1990	101,912	3,486,310
2000	141,615	4,012,012
2010	178,990	4,549,150
2020	211,350	5,020,400
2030	244,270	5,488,460

Source: US Census Bureau

Employers by Size of Establishment

Employees	Lowcountry Economic Network	South Carolina
0 to 4	3,554	73,899
5 to 9	969	19,834
10 to 19	722	14,291
20 to 49	455	10,837
50 to 99	149	4,356
100 to 249	81	2,703
250 to 499	17	817
500 to 999	3	373
1000 +	3	294

Employment by Size of Establishment

Employees	Lowcountry Economic Network	South Carolina
0 to 4	5,644	109,610
5 to 9	6,429	131,662
10 to 19	9,656	194,553
20 to 49	13,597	330,019
50 to 99	10,035	300,324
100 to 249	11,882	406,869
250 to 499	5,947	282,239
500 to 999	1,728	253,521
1000 +	5,598	754,506

Source: SC Department of Employment & Workforce - Q4 2015

20 Largestest Employers

(Listed Alphabetically)

Corporation Name

BEAUFORT COUNTY SCHOOL DISTRICT

BEAUFORT MEMORIAL HOSPITAL

DEPARTMENT OF DEFENSE

COUNTY OF BEAUFORT

PUBLIX SUPER MARKETS INC

WAL-MART ASSOCIATES INC

MARINE CORPS COMMUNITY SERVICES

CARECORE NATIONAL LLC

TENET PHYSICIAN SVCS OF HILTON HEAD

SOUTHERN BREAD LLC

JASPER COUNTY SCHOOL DISTRICT

SEA PINES RESORT LLC

MARRIOTT RESORTS HOSP CORP

KEY NISSAN LLC

JASPER CO BD OF DISABILITIES

THE GREENERY INC

HARGRAY COMMUNICATIONS GROUP INC

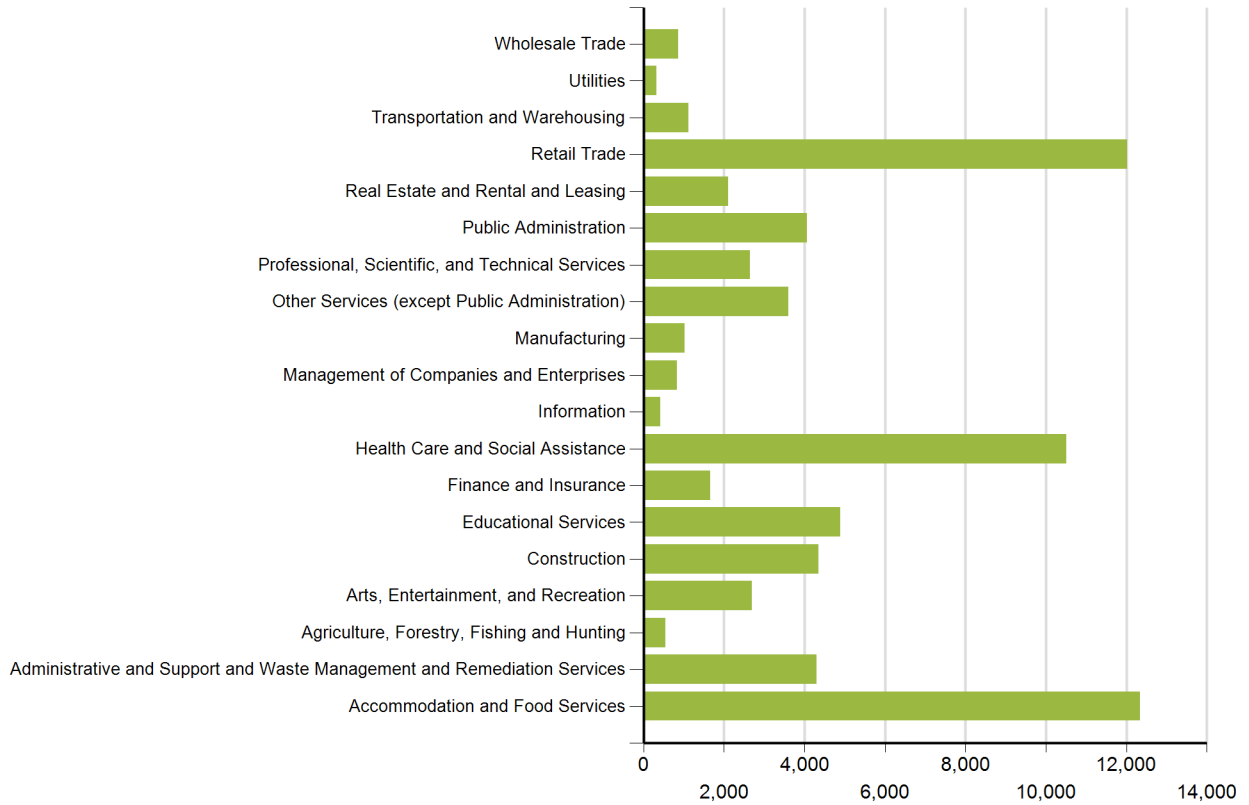
CYPRESS CLUB INC.

WAL-MART ASSOCIATES INC.

MONTAGE HOTELS AND RESORTS LLC

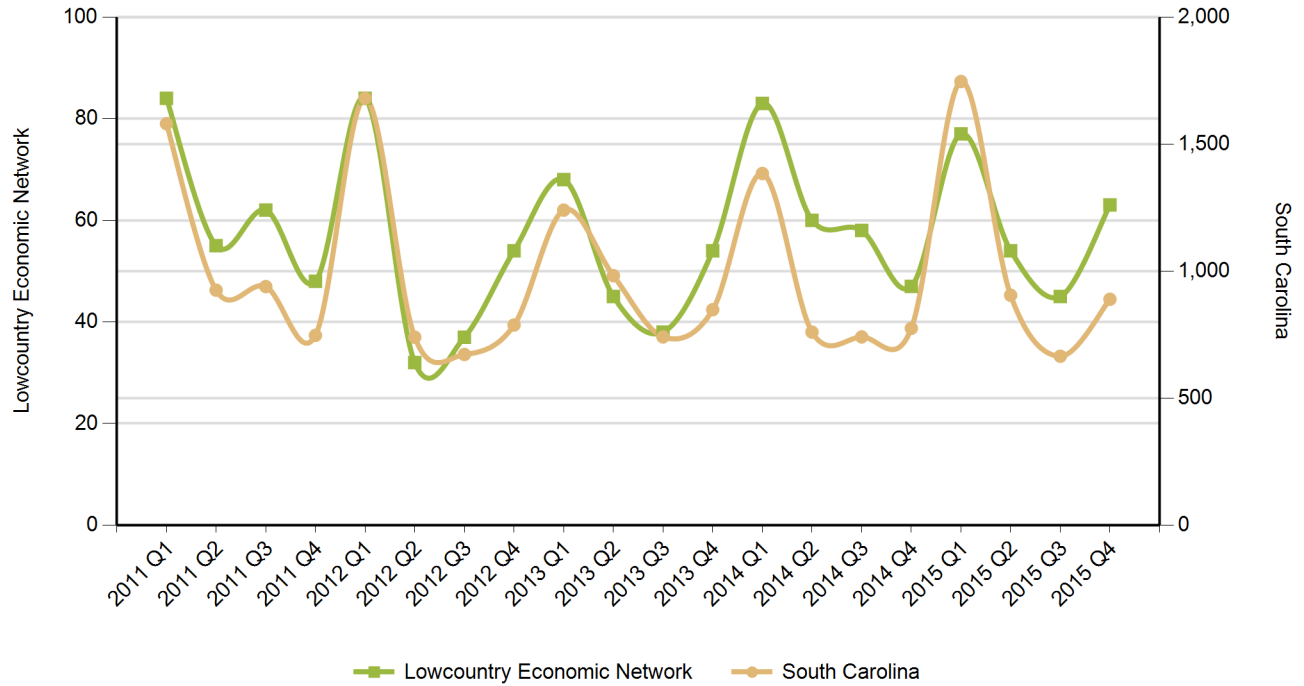
Source: SC Department of Employment & Workforce - Q4 2015

Employment by Industry



Source: SC Department of Employment & Workforce
 Quarterly Census of Employment and Wages (QCEW) - Q4 2015

New Startup Firms



Quarter	Lowcountry Economic Network	South Carolina
2015 Q4	63	889
2015 Q3	45	665
2015 Q2	54	905
2015 Q1	77	1,746
2014 Q4	47	775
2014 Q3	58	741
2014 Q2	60	760
2014 Q1	83	1,384
2013 Q4	54	848
2013 Q3	38	741
2013 Q2	45	982
2013 Q1	68	1,240
2012 Q4	54	788
2012 Q3	37	672
2012 Q2	32	740
2012 Q1	84	1,680
2011 Q4	48	747
2011 Q3	62	939
2011 Q2	55	925
2011 Q1	84	1,580

*Note: A firm is included in the count when it does not have a UI Account Number in the previous quarter and has a Setup Date that falls in the quarter displayed.
Source: SC Department of Employment & Workforce*

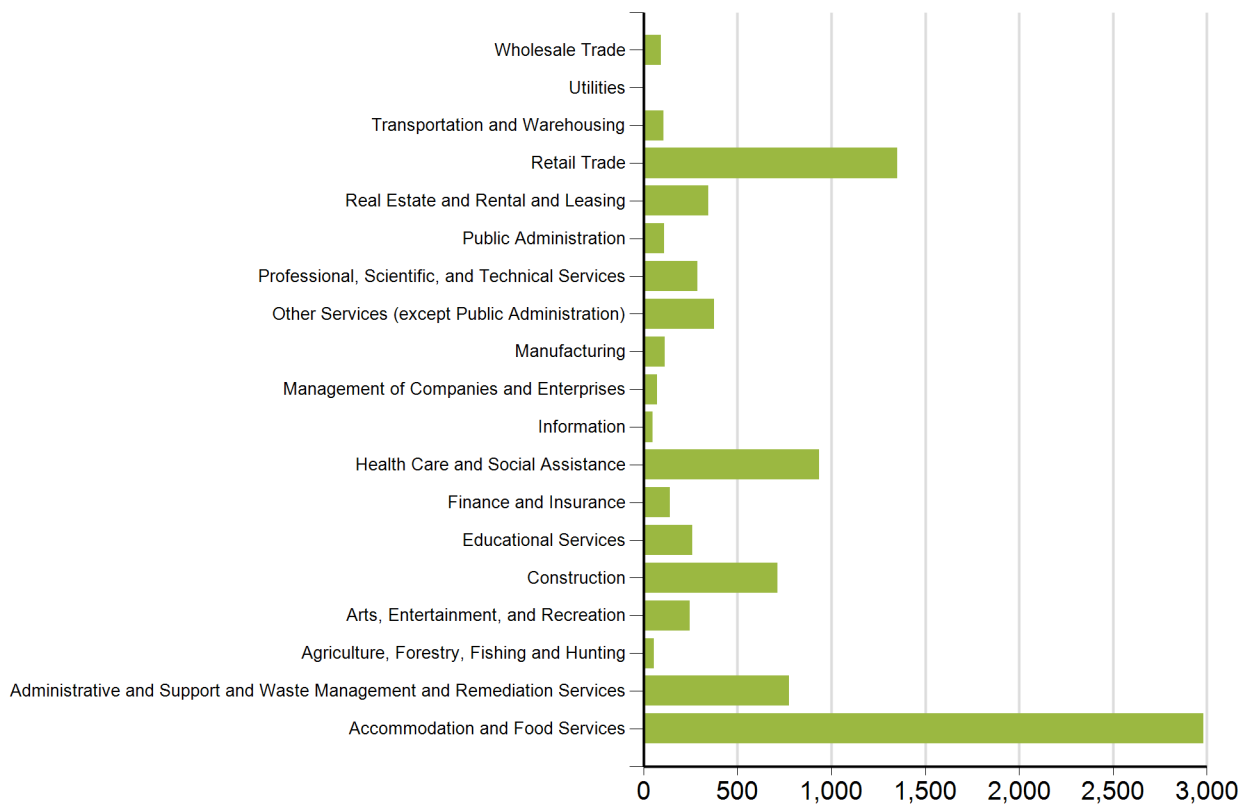
Top 20 Occupational Openings

April 2016

Occupation Name (Soccode)	Job Opening
Registered Nurses (29-1141)	141
Heavy and Tractor-Trailer Truck Drivers (53-3032)	137
Retail Salespersons (41-2031)	97
First-Line Supervisors of Food Preparation and Serving Workers (35-1012)	89
First-Line Supervisors of Retail Sales Workers (41-1011)	81
First-Line Supervisors of Office and Administrative Support Workers (43-1011)	63
Combined Food Preparation and Serving Workers, Including Fast Food (35-3021)	61
Waiters and Waitresses (35-3031)	59
Customer Service Representatives (43-4051)	57
Cooks, Restaurant (35-2014)	53
Maids and Housekeeping Cleaners (37-2012)	52
Coaches and Scouts (27-2022)	48
Maintenance and Repair Workers, General (49-9071)	47
Hotel, Motel, and Resort Desk Clerks (43-4081)	41
Landscaping and Groundskeeping Workers (37-3011)	41
Supervisors of Construction and Extraction Workers (47-1011)	37
Special Education Teachers, Secondary School (25-2054)	29
Carpenters (47-2031)	26
Dishwashers (35-9021)	26
Automotive Service Technicians and Mechanics (49-3023)	24

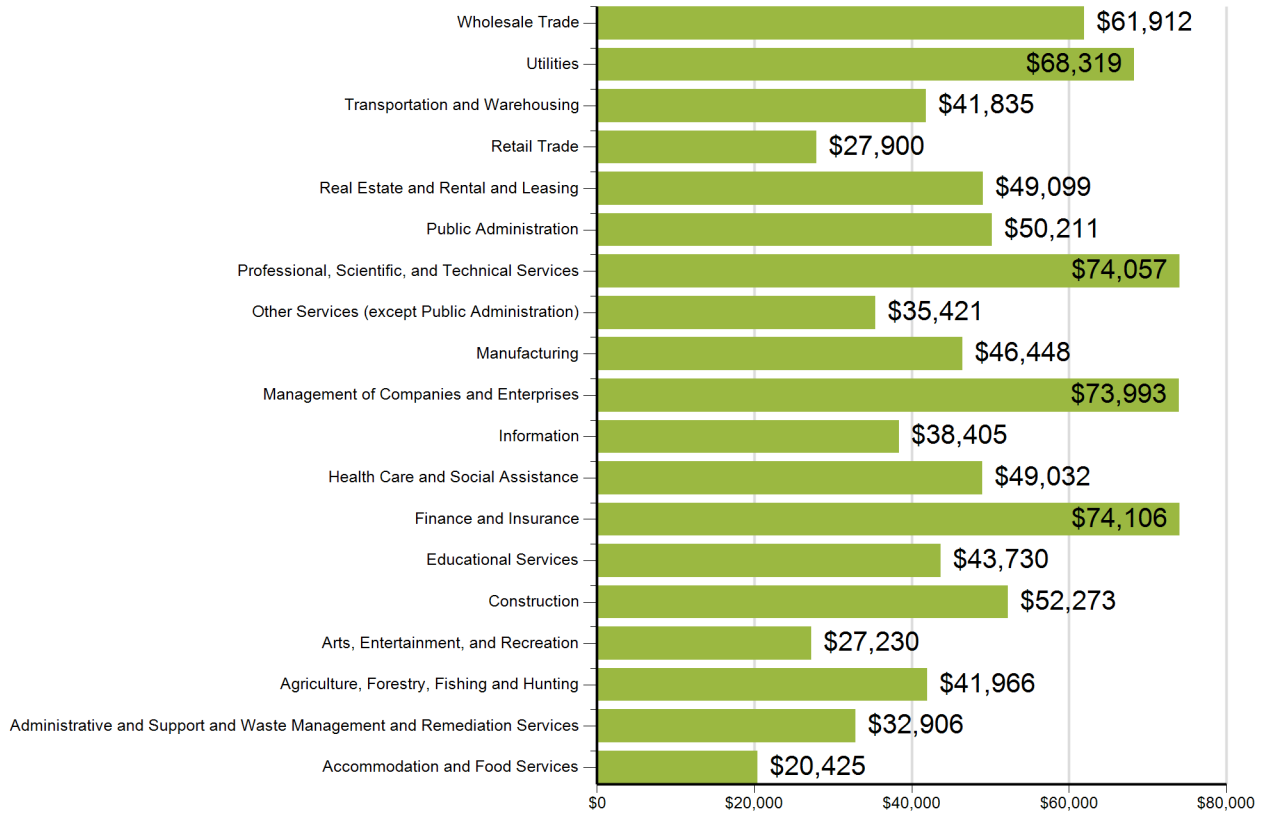
Source: SC Department of Employment & Workforce and The Conference Board's Help Wanted OnLine® Data Series

New Hires by Industry



US Census Bureau, Local Employment Dynamics - Q1 2014

Average Annual Wage by Industry



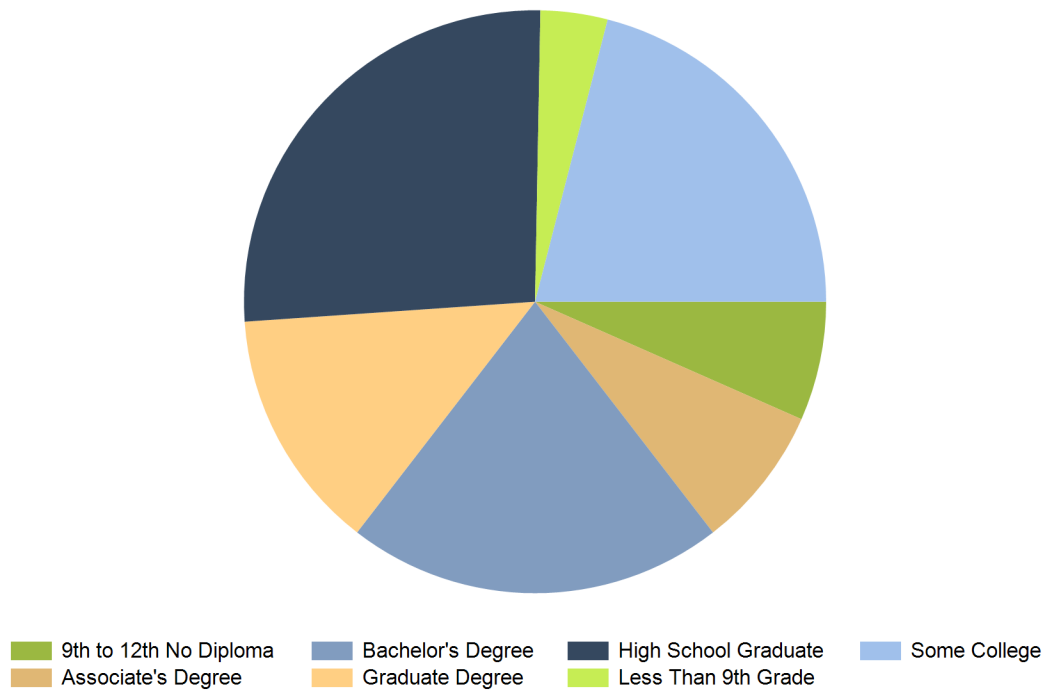
Source: SC Department of Employment & Workforce
 Quarterly Census of Employment and Wages (QCEW) - Q4
 2015

Age of Workers by Industry

Industry	14-18	19-21	22-24	25-34	35-44	45-54	55-64	65+
Total, All Industries	1,238	2,627	3,668	13,090	12,406	12,420	9,625	4,484
Agriculture, Forestry, Fishing and Hunting	0	5	19	72	69	71	74	31
Utilities	0	0	7	80	128	166	111	22
Construction	13	97	149	790	840	908	564	220
Manufacturing	9	21	51	178	203	250	169	48
Wholesale Trade	4	24	44	174	237	248	175	80
Retail Trade	345	795	826	1,978	1,583	1,742	1,535	838
Transportation and Warehousing	3	19	33	150	163	184	115	49
Information	26	36	23	73	74	72	67	25
Finance and Insurance	0	12	50	323	385	394	282	128
Real Estate and Rental and Leasing	13	41	72	371	400	456	377	297
Professional, Scientific, and Technical Services	7	32	86	454	527	449	436	232
Management of Companies and Enterprises	5	18	40	220	220	219	117	37
Administrative and Support and Waste Management and Remediat	28	116	245	1,011	895	911	541	334
Educational Services	5	10	135	848	1,111	1,138	1,079	391
Health Care and Social Assistance	16	129	339	1,862	1,929	1,855	1,624	580
Arts, Entertainment, and Recreation	57	92	114	434	386	377	303	276
Accommodation and Food Services	647	1,036	1,150	2,754	1,838	1,522	957	428
Other Services (except Public Administration)	44	111	211	724	726	784	601	301
Public Administration	6	23	72	597	690	673	491	166

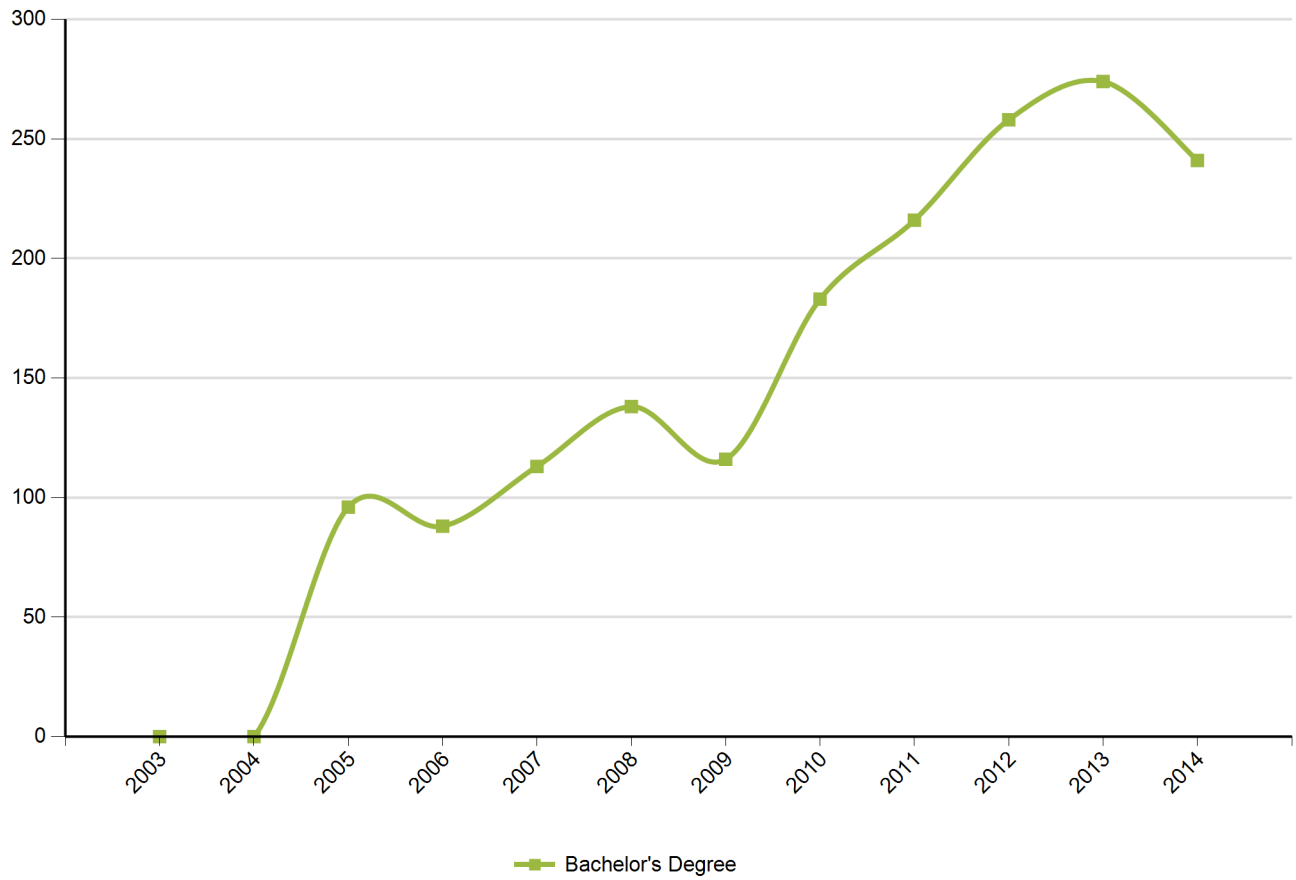
Source: US Census Bureau, Local Employment Dynamics - Q1 2014

Educational Attainment *(Population 25 Years and Older)*



Source: US Census Bureau, American Community Survey - 2013 5-Year Estimates

Graduate Trends



Source: Institute of Education Sciences (IES), Integrated Postsecondary Education Data System

Educational Institutions

Technical College of the Lowcountry
921 Ribaut Road
Beaufort, SC 29901
800.768.8252
<http://www.tcl.edu>
2014 Degrees Awarded: 426

University of South Carolina-Beaufort
1 University Boulevard
Bluffton, SC 29909
843.208.8000
<http://www.uscb.edu>
2014 Degrees Awarded: 244

Source: Institute of Education Sciences (IES), Integrated Postsecondary Education Data System