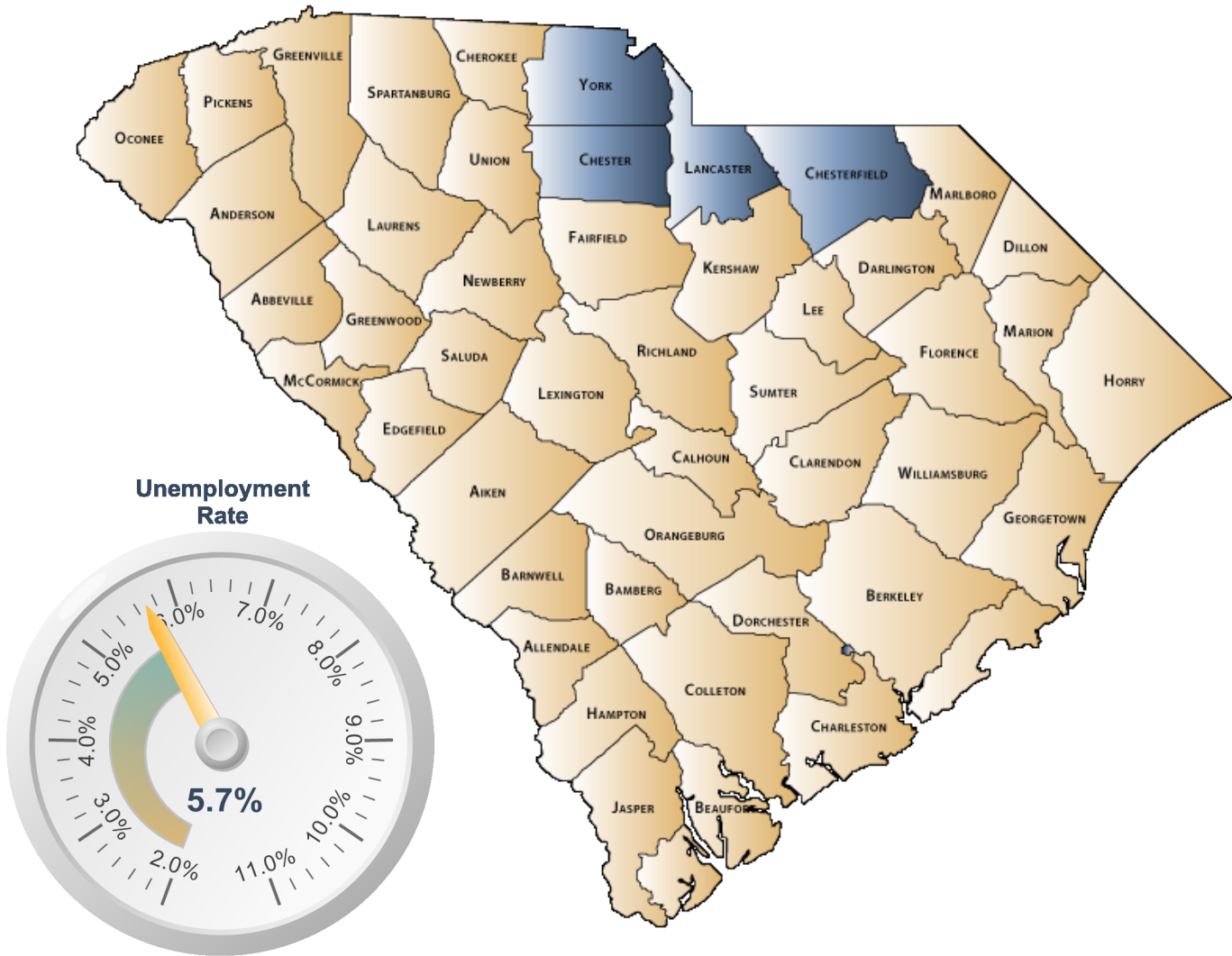


ECONOMIC PROFILE

Charlotte Regional Partnership



**Disclaimer: The data provided for the Charlotte Regional Partnership is limited to the counties of the partnership residing within South Carolina.*

S.C. Department of Employment & Workforce
Labor Market Information

1550 Gadsden Street, PO Box 995
Columbia, SC 29202
803-737-2660

www.SCWorkforceInfo.com

<http://CharlotteUSA.com/>

Updated: 07/21/2016

Table of Contents

1. Economic Data	
Annual Unemployment Rates.....	3
Monthly Unemployment Rates.....	4
Area Job Openings.....	5
Unemployment Insurance	
Demographic Data.....	6
Industry Data.....	7
Occupation Data.....	8
Retail Sales.....	9
2. Demographic Data	
Population	
Age.....	10
Race.....	11
Gender.....	11
Change.....	12
Employer Data	
Size of Establishments.....	13
Employment by Size of Establishment.....	13
20 Largest Employers.....	14
3. Industry Data	
Employment by Industry.....	15
New Startup Firms.....	16
Top Occupational Openings.....	17
New Hires by Industry.....	18
Average Annual Wage by Industry.....	19
Age of Workers by Industry.....	20
4. Education Data	
Educational Attainment.....	21
Graduate Trends.....	22
Educational Institutions.....	23

***Disclaimer: All data provided is an aggregate of the counties' data that comprise the Charlotte Regional Partnership**

Annual Unemployment Rate (Unadjusted)

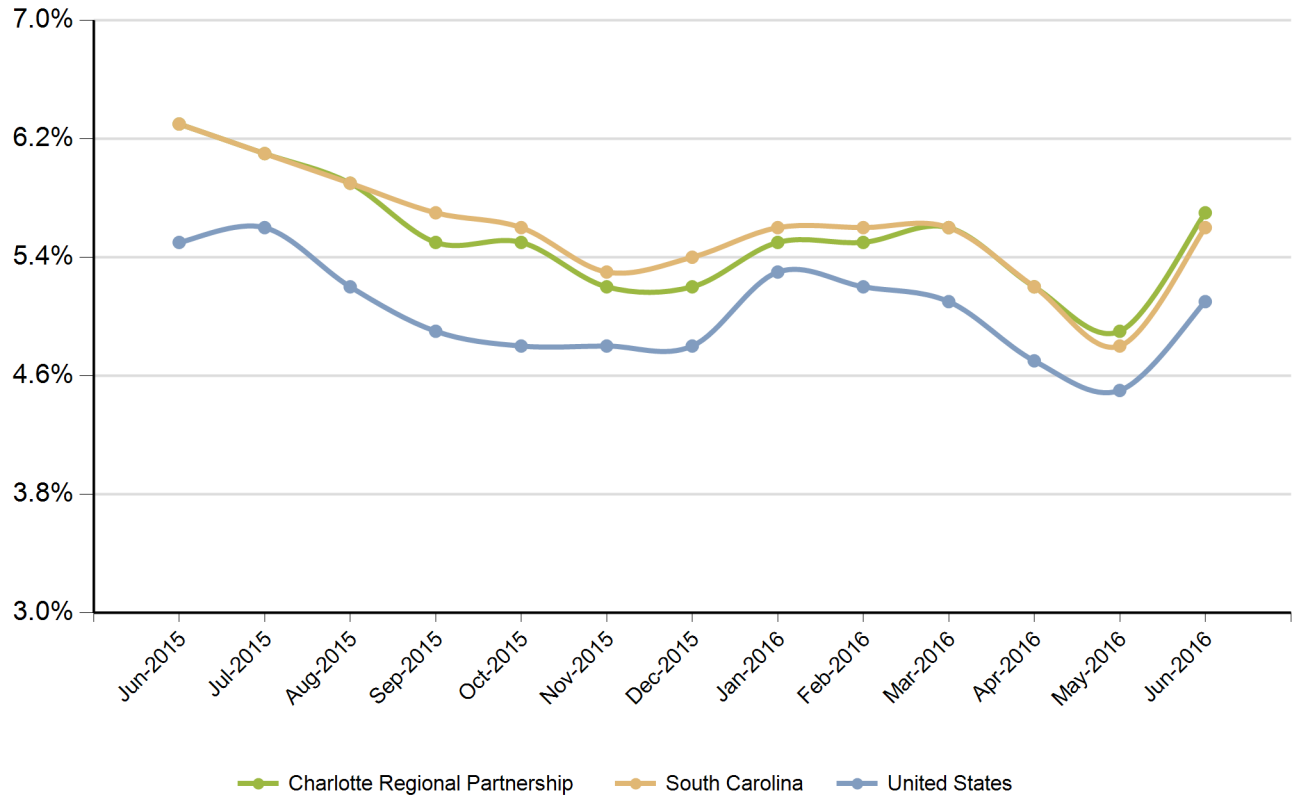
Trends



Year	Charlotte Regional Partnership			South Carolina			United States		
	Employed	Unemployed	Unemp Rate	Employed	Unemployed	Unemp Rate	Employed	Unemployed	Unemp Rate
2005	147,945	12,046	7.5%	1,929,233	139,366	6.7%	141,730,000	7,591,000	5.1%
2006	153,714	12,594	7.6%	1,973,337	135,760	6.4%	144,427,000	7,001,000	4.6%
2007	156,766	11,617	6.9%	2,005,686	120,205	5.7%	146,047,000	7,078,000	4.6%
2008	156,741	14,428	8.4%	1,996,409	145,823	6.8%	145,362,000	8,924,000	5.8%
2009	150,617	26,658	15.0%	1,910,670	242,075	11.2%	139,877,000	14,265,000	9.3%
2010	160,638	24,890	13.4%	1,915,045	240,623	11.2%	139,064,000	14,825,000	9.6%
2011	164,135	22,549	12.1%	1,945,900	229,623	10.6%	139,869,000	13,747,000	8.9%
2012	168,440	19,272	10.3%	1,983,506	200,607	9.2%	142,469,000	12,506,000	8.1%
2013	172,279	15,949	8.5%	2,022,444	166,924	7.6%	143,929,000	11,460,000	7.4%
2014	179,047	12,938	6.7%	2,074,277	142,505	6.4%	146,305,000	9,617,000	6.2%
2015	184,450	11,571	5.9%	2,122,573	134,504	6.0%	148,834,000	8,296,000	5.3%

Source: SC Department of Employment & Workforce

Monthly Unemployment Rate (Unadjusted)



Period	Charlotte Regional Partnership	South Carolina	United States
Jun-2015	6.3%	6.3%	5.5%
Jul-2015	6.1%	6.1%	5.6%
Aug-2015	5.9%	5.9%	5.2%
Sep-2015	5.5%	5.7%	4.9%
Oct-2015	5.5%	5.6%	4.8%
Nov-2015	5.2%	5.3%	4.8%
Dec-2015	5.2%	5.4%	4.8%
Jan-2016	5.5%	5.6%	5.3%
Feb-2016	5.5%	5.6%	5.2%
Mar-2016	5.6%	5.6%	5.1%
Apr-2016	5.2%	5.2%	4.7%
May-2016	4.9%	4.8%	4.5%
Jun-2016	5.7%	5.6%	5.1%

Source: SC Department of Employment & Workforce

Area Job Openings

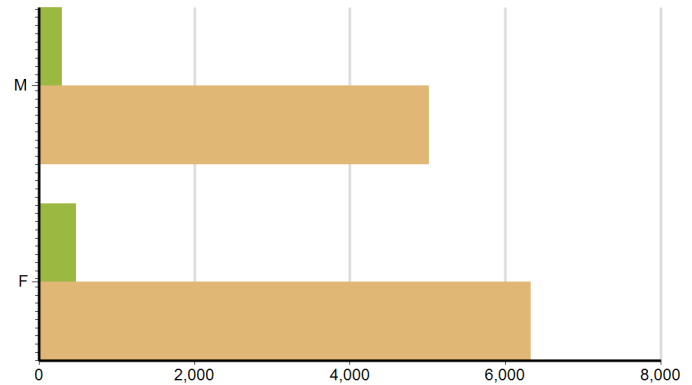
Period	Charlotte Regional Partnership				South Carolina			
	Employed	Unemployed	Unemp Rate	Job Openings	Employed	Unemployed	Unemp Rate	Job Openings
Jun-2015	186,223	12,468	6.3%	4,023	2,117,636	132,841	5.9%	73,702
Jul-2015	184,510	11,907	6.1%	4,066	2,122,043	129,098	5.7%	73,050
Aug-2015	184,682	11,642	5.9%	3,933	2,126,323	126,465	5.6%	71,760
Sep-2015	184,070	10,767	5.5%	4,000	2,130,209	125,030	5.5%	71,372
Oct-2015	185,874	10,816	5.5%	4,045	2,133,670	124,395	5.5%	71,138
Nov-2015	185,664	10,209	5.2%	3,844	2,136,651	124,159	5.5%	73,219
Dec-2015	185,902	10,171	5.2%	3,784	2,138,997	124,433	5.5%	60,418
Jan-2016	186,557	10,866	5.5%	3,926	2,150,533	124,506	5.5%	56,427
Feb-2016	187,198	10,993	5.5%	4,016	2,162,709	125,494	5.5%	64,238
Mar-2016	189,440	11,177	5.6%	4,096	2,174,655	131,324	5.7%	61,889
Apr-2016	190,206	10,503	5.2%	4,224	2,181,794	134,295	5.8%	67,021
May-2016	190,522	9,824	4.9%	4,007	2,185,072	129,861	5.6%	63,126
Jun-2016	191,654	11,484	5.7%	4,271	2,185,181	125,591	5.4%	61,518

Source: SC Department of Employment & Workforce, The Conference Board's Help Wanted OnLine® Data Series
South Carolina Data is Seasonally Adjusted

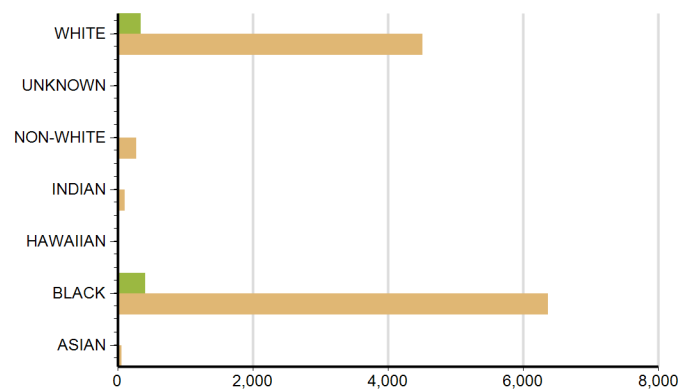
Characteristics of Unemployment Insurance Claimants

June-2016

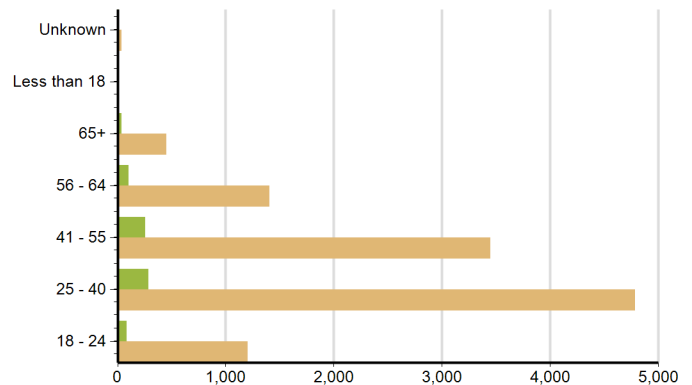
Gender	Charlotte Regional Partnership	South Carolina
Female	481	6,325
Male	299	5,020



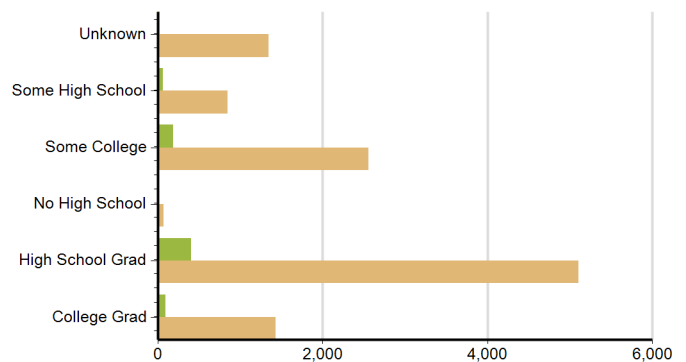
Race	Charlotte Regional Partnership	South Carolina
ASIAN	3	64
BLACK	412	6,367
INDIAN	5	106
NON-WHITE	17	282
WHITE	343	4,509



Age Group	Charlotte Regional Partnership	South Carolina
18 - 24	88	1,206
25 - 40	289	4,786
41 - 55	260	3,448
56 - 64	101	1,408
65+	40	454
Unknown	2	39



Education	Charlotte Regional Partnership	South Carolina
College Grad	91	1,426
High School Grad	403	5,103
No High School	10	72
Some College	187	2,553
Some High School	66	847
Unknown	23	1,344

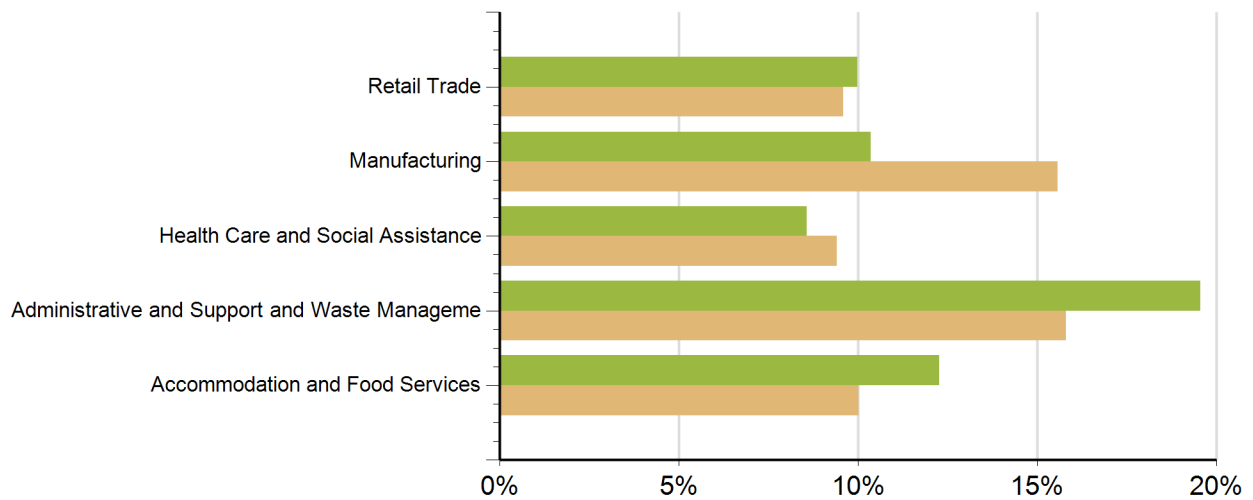


Source: SC Department of Employment & Workforce

Characteristics of Unemployment Insurance Claims by Industry

Industry Groups with Largest Number of Claims

June-2016

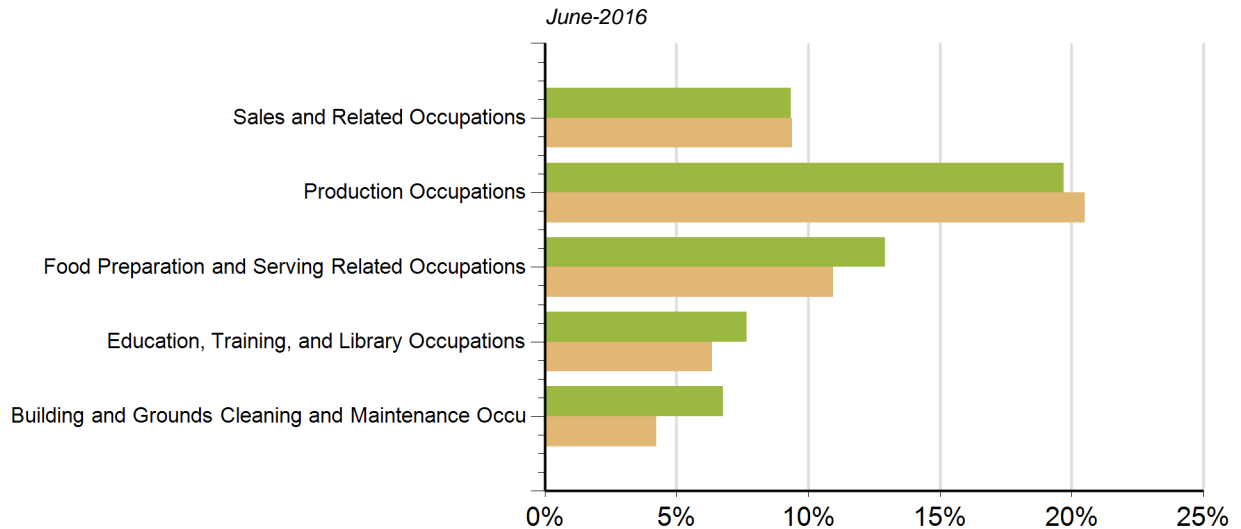


Industry	Charlotte Regional Partnership	South Carolina
Mining, Quarrying, and Oil and Gas Extraction	2	8
Manufacturing	81	1,769
Transportation and Warehousing	9	450
Management of Companies and Enterprises	5	66
Retail Trade	78	1,089
Finance and Insurance	12	181
Wholesale Trade	33	347
Health Care and Social Assistance	67	1,069
Professional, Scientific, and Technical Services	25	471
Administrative and Support and Waste Management	153	1,795
Other Services (except Public Administration)	28	386
Unknown	110	1,123
Utilities	2	13
Agriculture, Forestry, Fishing and Hunting	6	52
Construction	34	457
Arts, Entertainment, and Recreation	4	96
Accommodation and Food Services	96	1,138
Public Administration	19	190
Information	1	104
Real Estate and Rental and Leasing	4	149
Educational Services	13	406

Source: SC Department of Employment & Workforce

Characteristics of Unemployment Insurance Claims by Occupation

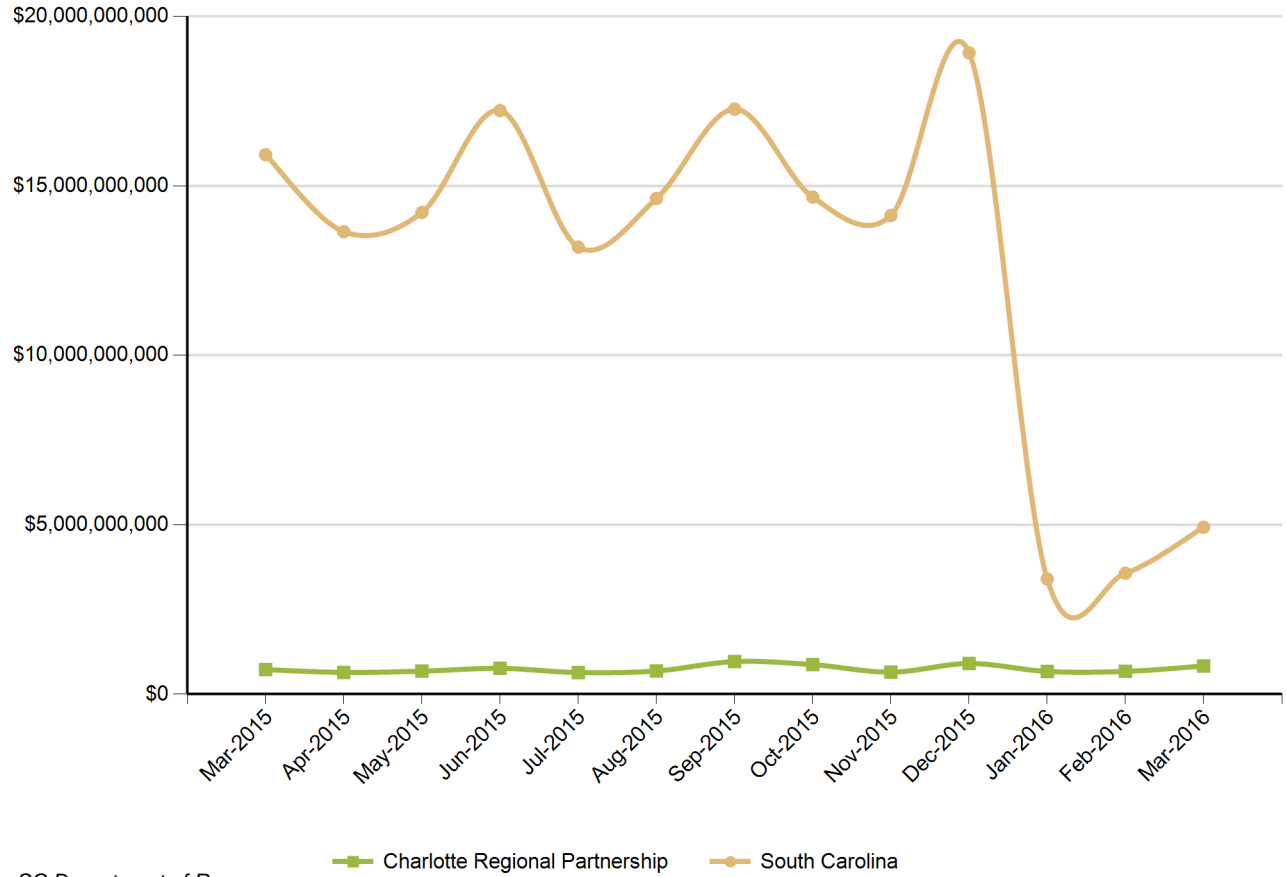
Occupation Groups with Largest Number of Claims



Occupation	Charlotte Regional Partnership	South Carolina
Architecture and Engineering Occupations	12	157
Arts, Design, Entertainment, Sports, and Media Occ	4	67
Building and Grounds Cleaning and Maintenance Occu	53	480
Business and Financial Operations Occupations	32	352
Community and Social Service Occupations	14	117
Computer and Mathematical Occupations	16	165
Construction and Extraction Occupations	32	551
Education, Training, and Library Occupations	60	723
Farming, Fishing, and Forestry Occupations	5	47
Food Preparation and Serving Related Occupations	101	1,245
Healthcare Practitioners and Technical Occupations	8	174
Healthcare Support Occupations	32	402
Installation, Maintenance, and Repair Occupations	27	302
Legal Occupations	4	52
Management Occupations	40	588
Military Specific Occupations	1	48
Office and Administrative Support Occupations	39	710
Personal Care and Service Occupations	11	160
Production Occupations	154	2,330
Protective Service Occupations	11	123
Sales and Related Occupations	73	1,067
Transportation and Material Moving Occupations	25	519
Unknown	28	960

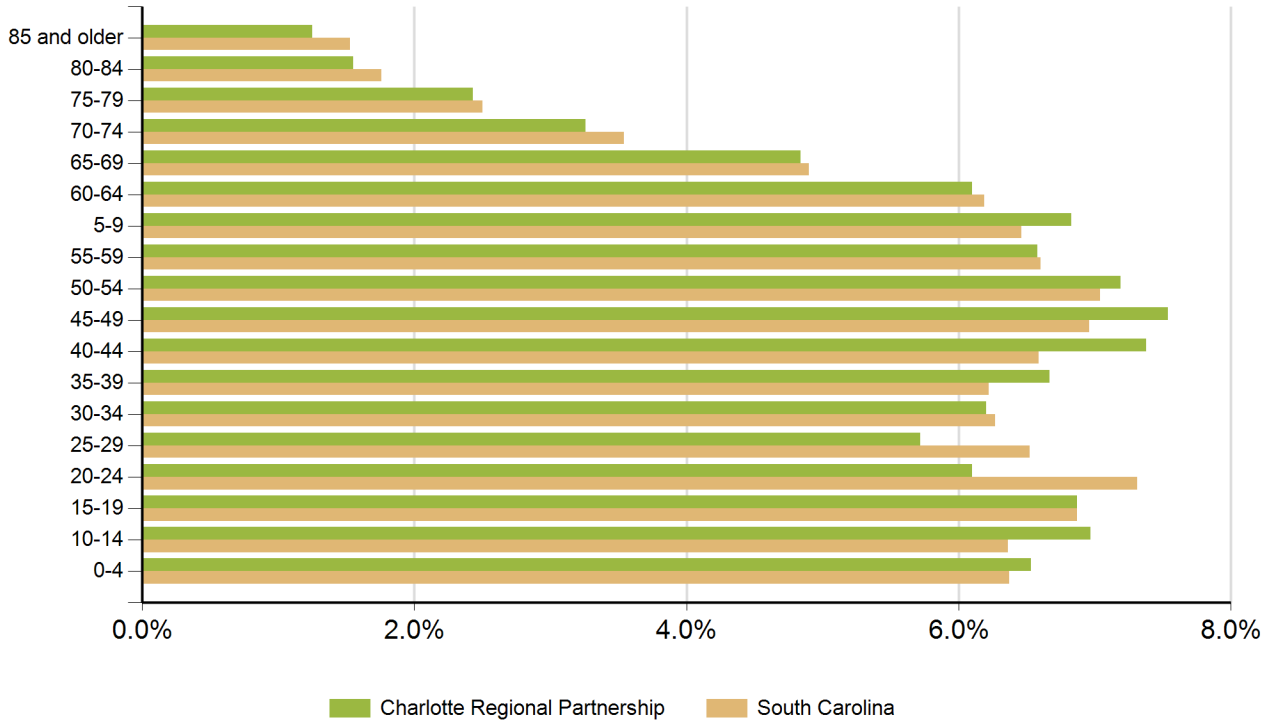
Source: SC Department of Employment & Workforce

Retail Sales



Source: SC Department of Revenue

Population by Age



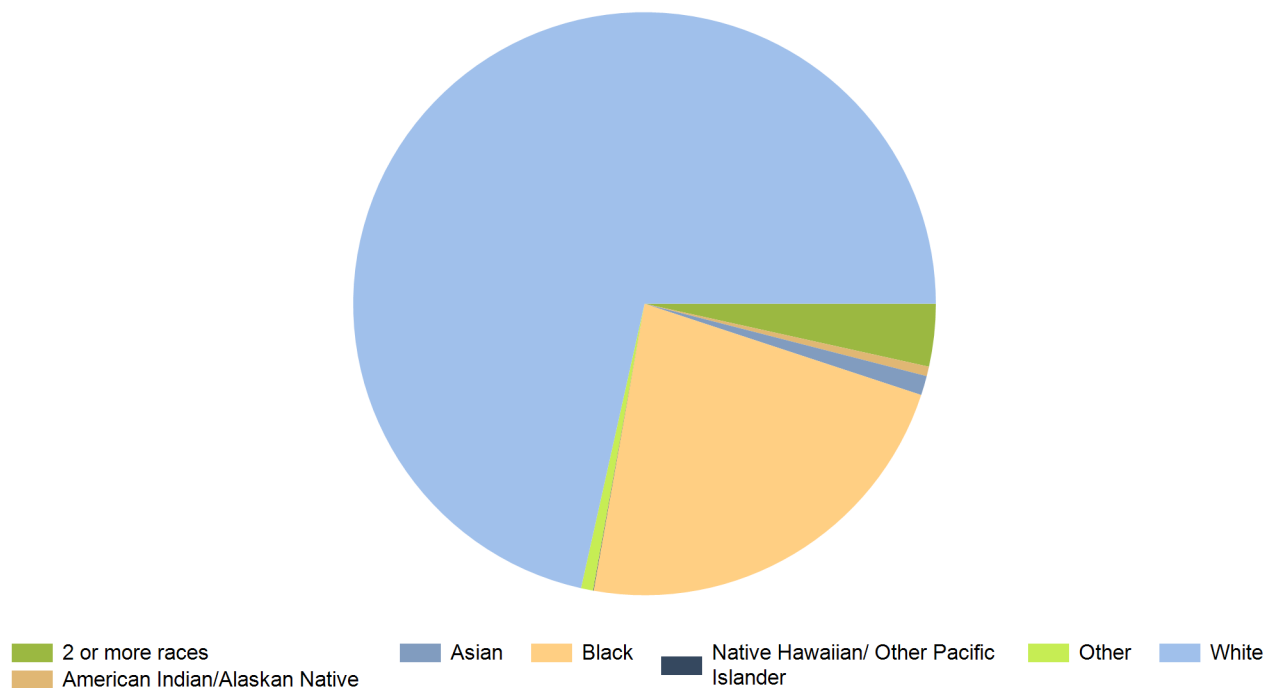
Age Range	Charlotte Regional Partnership	South Carolina	United States
0-4	25,359	298,242	20,052,112
5-9	26,505	302,111	20,409,060
10-14	27,066	297,443	20,672,609
15-19	26,659	321,540	21,715,074
20-24	23,685	342,237	22,099,887
25-29	22,201	305,167	21,243,365
30-34	24,067	293,464	20,467,912
35-39	25,901	291,183	19,876,161
40-44	28,647	308,158	20,998,001
45-49	29,262	325,660	22,109,946
50-54	27,926	329,431	22,396,322
55-59	25,537	309,061	20,165,892
60-64	23,676	289,690	17,479,211
65-69	18,774	229,251	13,189,508
70-74	12,659	165,797	9,767,522
75-79	9,441	117,187	7,438,750
80-84	6,011	82,223	5,781,697
85 and older	4,835	71,757	5,673,565

Source: US Census Bureau, American Community Survey

Population by Race

Race	Charlotte Regional Partnership	%	South Carolina	%	United States	%
White	282,461	71.5%	3,144,146	66.0%	230,592,579	72.0%
Black	89,805	22.7%	1,298,534	27.3%	39,167,010	12.2%
American Indian/Alaskan Native	2,103	0.5%	14,732	0.3%	2,540,309	0.8%
Asian	4,233	1.1%	61,097	1.3%	15,231,962	4.8%
Native Hawaiian/ Other Pacific Islander	113	0.0%	2,128	0.0%	526,347	0.2%
2 or more races	13,690	3.5%	169,670	3.6%	17,464,666	5.5%
Other	2,651	0.7%	74,130	1.6%	14,746,054	4.6%

Source: US Census Bureau, American Community Survey



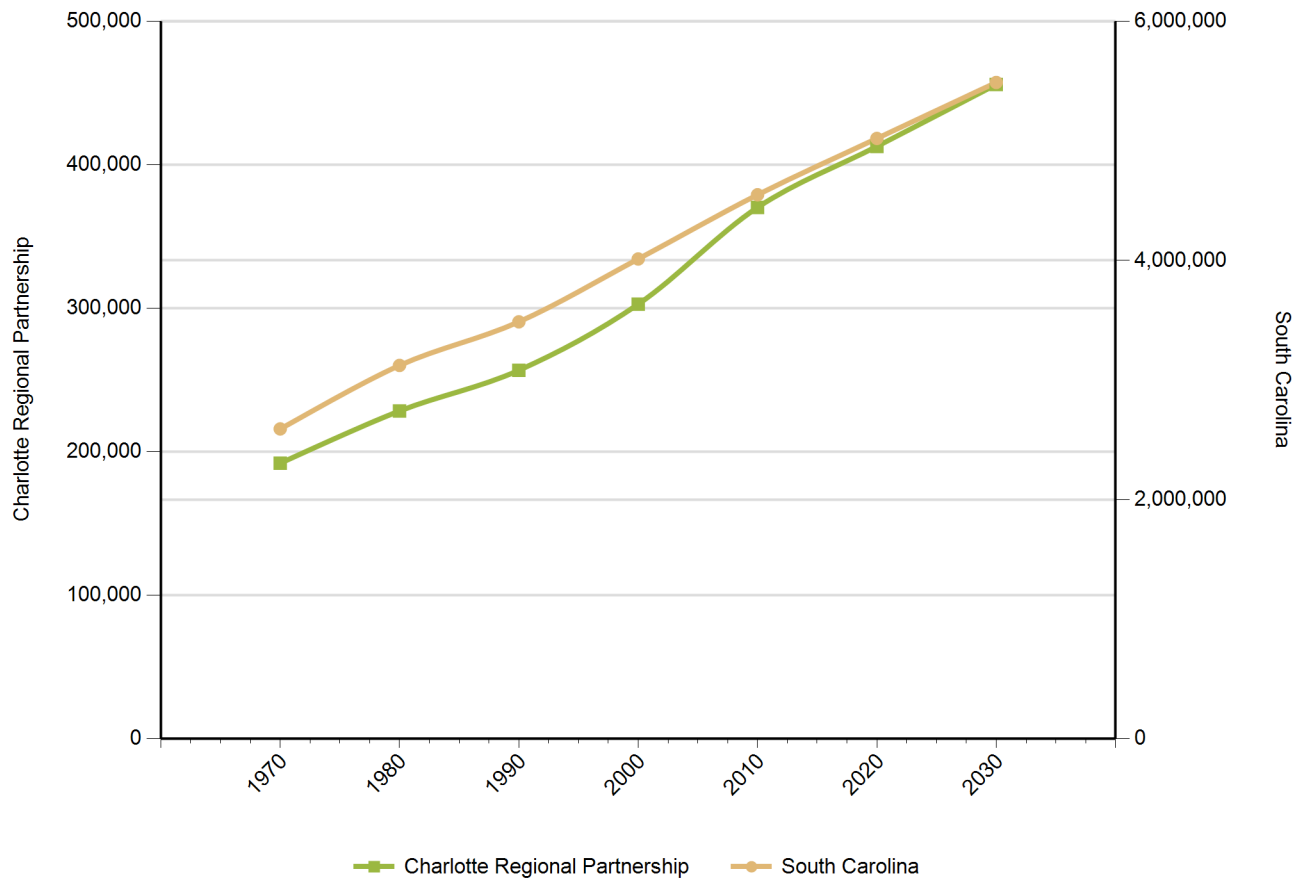
Population by Gender

Gender	Charlotte Regional Partnership	South Carolina	United States
Female	199,912	2,403,297	158,289,182
Male	188,299	2,276,305	153,247,412

Source: US Census Bureau, American Community Survey

Population Change

Historical and Projected



Year	Charlotte Regional Partnership	South Carolina
1970	192,022	2,590,713
1980	228,390	3,121,820
1990	256,758	3,486,310
2000	302,801	4,012,012
2010	370,290	4,549,150
2020	412,830	5,020,400
2030	455,950	5,488,460

Source: US Census Bureau

Employers by Size of Establishment

Employees	Charlotte Regional Partnership	South Carolina
0 to 4	4,335	73,899
5 to 9	1,319	19,834
10 to 19	885	14,291
20 to 49	679	10,837
50 to 99	264	4,356
100 to 249	161	2,703
250 to 499	43	817
500 to 999	15	373
1000 +	11	294

Employment by Size of Establishment

Employees	Charlotte Regional Partnership	South Carolina
0 to 4	6,794	109,610
5 to 9	8,716	131,662
10 to 19	11,947	194,553
20 to 49	20,607	330,019
50 to 99	17,956	300,324
100 to 249	23,446	406,869
250 to 499	14,800	282,239
500 to 999	10,331	253,521
1000 +	17,547	754,506

Source: SC Department of Employment & Workforce - Q4 2015

20 Largestest Employers

(Listed Alphabetically)

Corporation Name

WAL-MART ASSOCIATES INC

SCHAEFFLER GROUP USA INC

RBUS INC

ROCK HILL SCHOOL DISTRICT NO 3

WELLS FARGO BANK N A

FORT MILL SCHOOL DISTRICT NO 4

AMISUB OF SOUTH CAROLINA INC

DMSI STAFFING LLC

ROSS DRESS FOR LESS INC

WINTHROP UNIVERSITY

DUKE ENERGY CORPORATION

EXPRESS SERVICES INC

CHESTERFIELD COUNTY SCHOOL DISTRICT

CLOVER SCHOOL DISTRICT NO 2

COUNTY OF YORK

COMPORIUM INC

CITY OF ROCK HILL

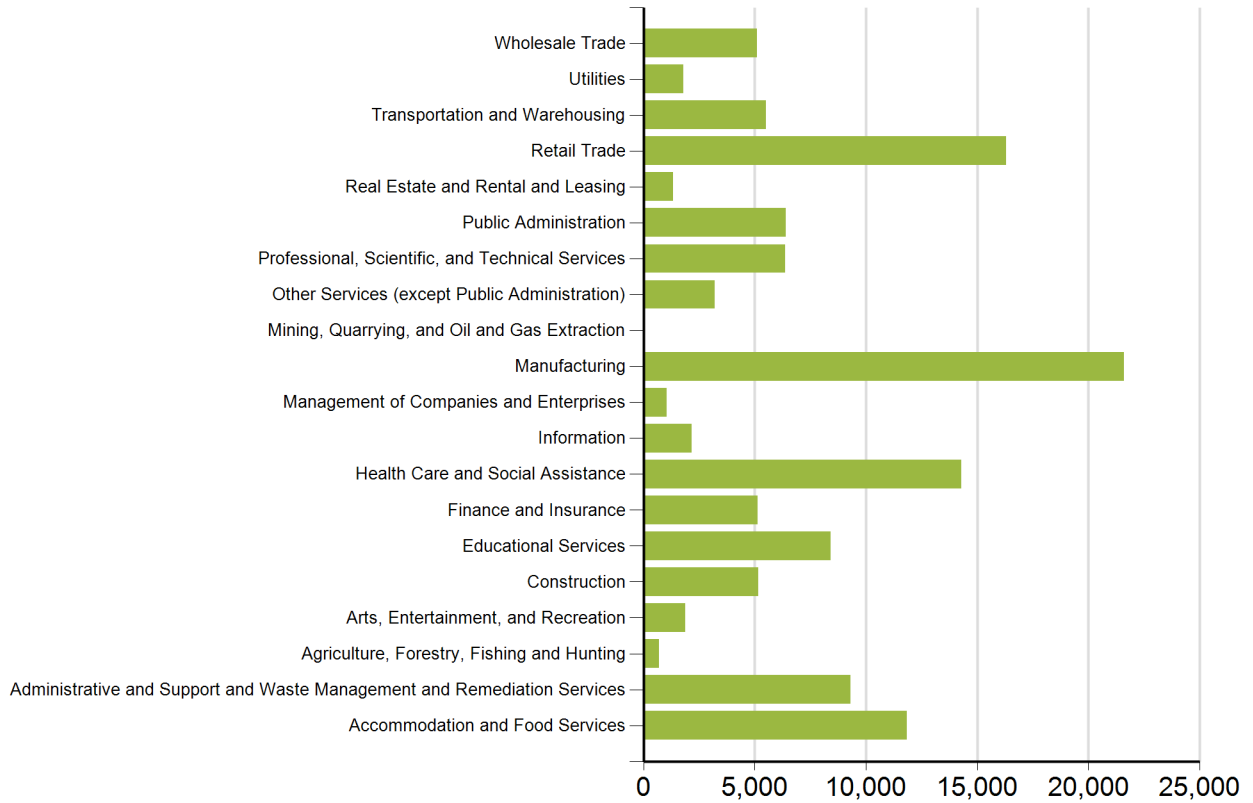
YORK SCHOOL DISTRICT NO 1

CHESTER COUNTY SCHOOL DISTRICT

RESOLUTE FP US INC

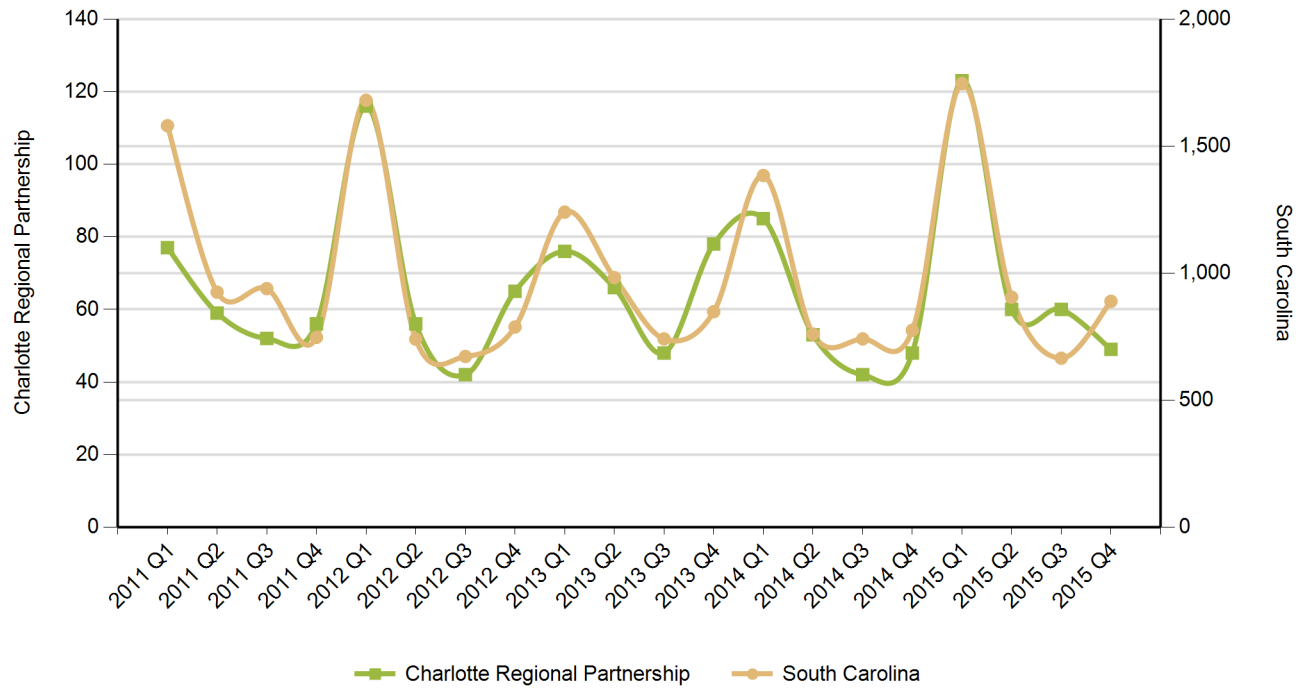
Source: SC Department of Employment & Workforce - Q4 2015

Employment by Industry



Source: SC Department of Employment & Workforce
Quarterly Census of Employment and Wages (QCEW) - Q4 2015

New Startup Firms



Quarter	Charlotte Regional Partnership	South Carolina
2015 Q4	49	889
2015 Q3	60	665
2015 Q2	60	905
2015 Q1	123	1,746
2014 Q4	48	775
2014 Q3	42	741
2014 Q2	53	760
2014 Q1	85	1,384
2013 Q4	78	848
2013 Q3	48	741
2013 Q2	66	982
2013 Q1	76	1,240
2012 Q4	65	788
2012 Q3	42	672
2012 Q2	56	740
2012 Q1	116	1,680
2011 Q4	56	747
2011 Q3	52	939
2011 Q2	59	925
2011 Q1	77	1,580

Note: A firm is included in the count when it does not have a UI Account Number in the previous quarter and has a Setup Date that falls in the quarter displayed.

Source: SC Department of Employment & Workforce

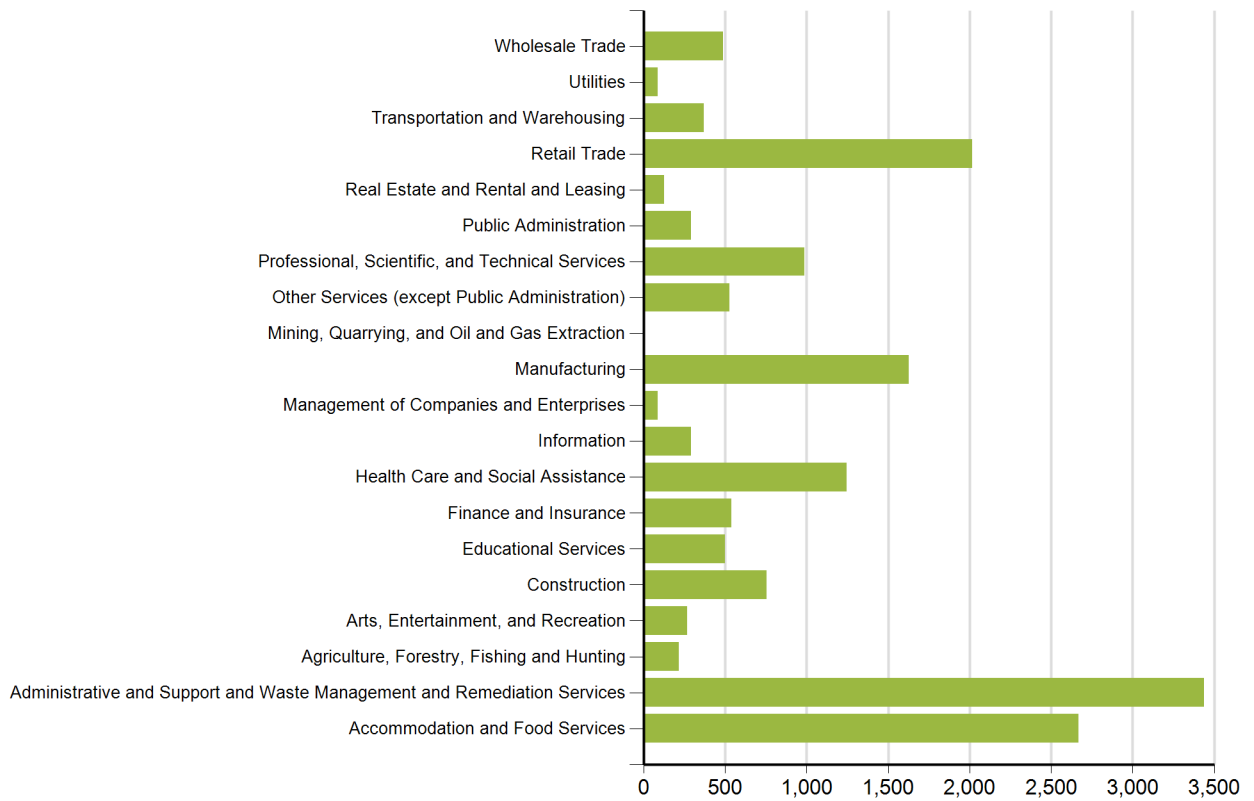
Top 20 Occupational Openings

April 2016

Occupation Name (Soccode)	Job Opening
Registered Nurses (29-1141)	287
Heavy and Tractor-Trailer Truck Drivers (53-3032)	237
Retail Salespersons (41-2031)	80
Laborers and Freight, Stock, and Material Movers, Hand (53-7062)	74
Industrial Engineers (17-2112)	73
First-Line Supervisors of Office and Administrative Support Workers (43-1011)	72
First-Line Supervisors of Food Preparation and Serving Workers (35-1012)	71
First-Line Supervisors of Retail Sales Workers (41-1011)	70
Customer Service Representatives (43-4051)	67
First-Line Supervisors of Production and Operating Workers (51-1011)	66
Maintenance and Repair Workers, General (49-9071)	64
Stock Clerks and Order Fillers (43-5081)	59
Accountants and Auditors (13-2011)	58
Computer Occupations, All Other (15-1199)	57
Computer Systems Analysts (15-1121)	53
Combined Food Preparation and Serving Workers, Including Fast Food (35-3021)	45
Licensed Practical and Licensed Vocational Nurses (29-2061)	44
Medical Assistants (31-9092)	42
Computer User Support Specialists (15-1151)	36
Physical Therapists (29-1123)	35

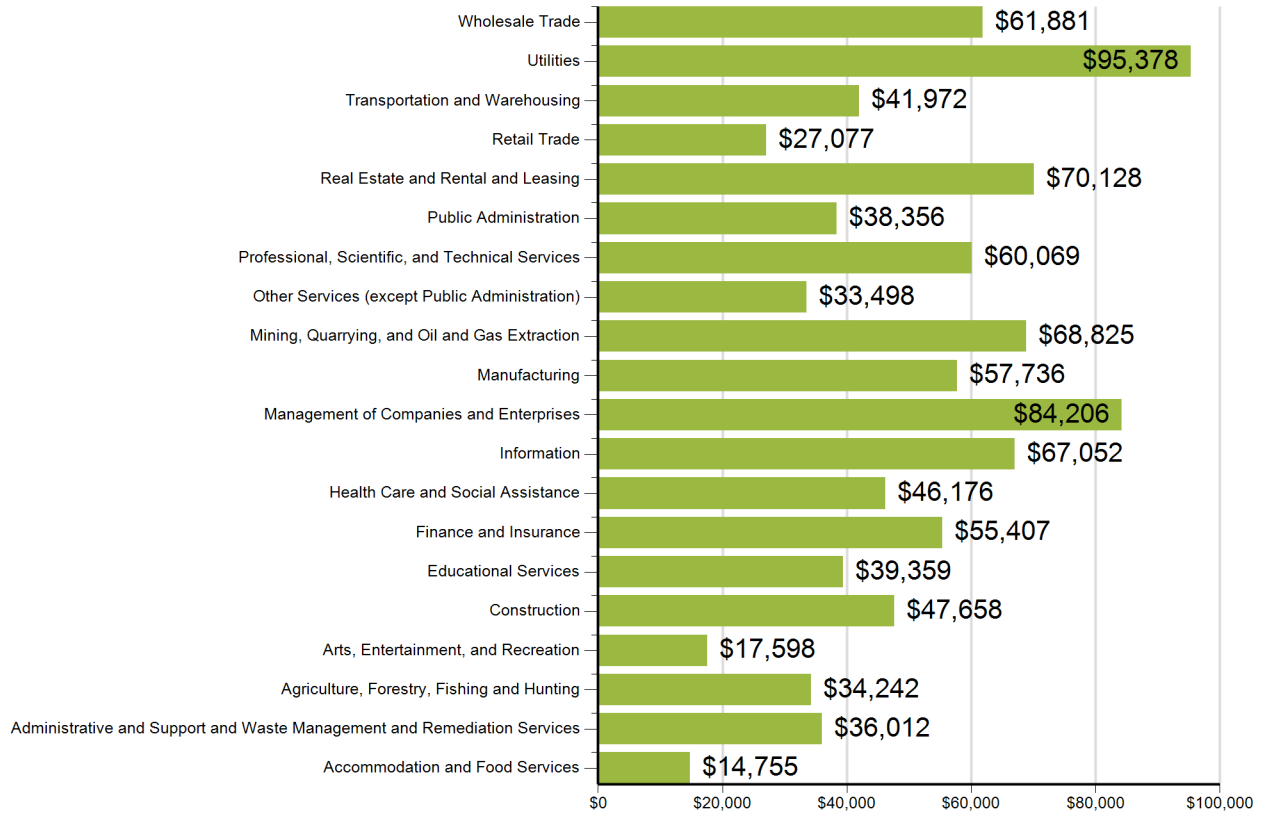
Source: SC Department of Employment & Workforce and The Conference Board's Help Wanted OnLine® Data Series

New Hires by Industry



US Census Bureau, Local Employment Dynamics - Q1 2014

Average Annual Wage by Industry



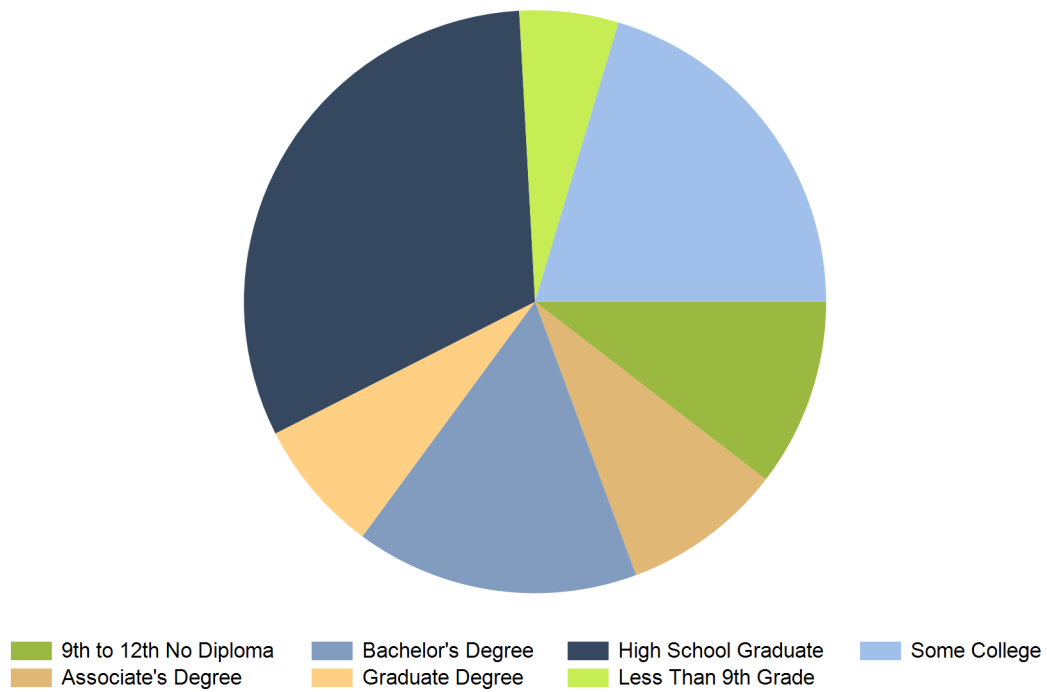
Source: SC Department of Employment & Workforce
 Quarterly Census of Employment and Wages (QCEW) - Q4
 2015

Age of Workers by Industry

Industry	14-18	19-21	22-24	25-34	35-44	45-54	55-64	65+
Total, All Industries	2,258	5,140	7,340	25,868	27,778	28,070	19,959	5,900
Agriculture, Forestry, Fishing and Hunting	9	22	32	118	146	155	118	60
Mining, Quarrying, and Oil and Gas Extraction	0	0	4	18	31	49	31	4
Utilities	0	5	21	264	322	488	632	56
Construction	19	94	162	860	956	1,057	635	213
Manufacturing	36	322	741	3,444	4,970	6,072	4,240	729
Wholesale Trade	9	79	167	928	1,416	1,466	977	311
Retail Trade	505	1,371	1,468	3,311	2,710	2,856	1,971	780
Transportation and Warehousing	14	140	169	544	681	699	491	149
Information	18	32	97	469	480	431	332	101
Finance and Insurance	6	94	324	1,950	1,937	1,402	807	170
Real Estate and Rental and Leasing	0	14	52	236	313	296	227	69
Professional, Scientific, and Technical Services	31	109	339	1,367	1,123	966	657	244
Management of Companies and Enterprises	12	26	53	282	351	317	191	47
Administrative and Support and Waste Management and Remediat	74	466	720	2,324	1,965	1,794	1,112	362
Educational Services	60	84	347	2,256	3,337	3,396	2,944	888
Health Care and Social Assistance	36	254	643	2,910	3,276	3,018	2,110	625
Arts, Entertainment, and Recreation	144	145	105	236	254	246	177	161
Accommodation and Food Services	1,172	1,592	1,409	2,582	1,522	1,320	700	262
Other Services (except Public Administration)	74	177	218	585	584	594	448	226
Public Administration	17	92	261	1,180	1,404	1,448	1,149	441

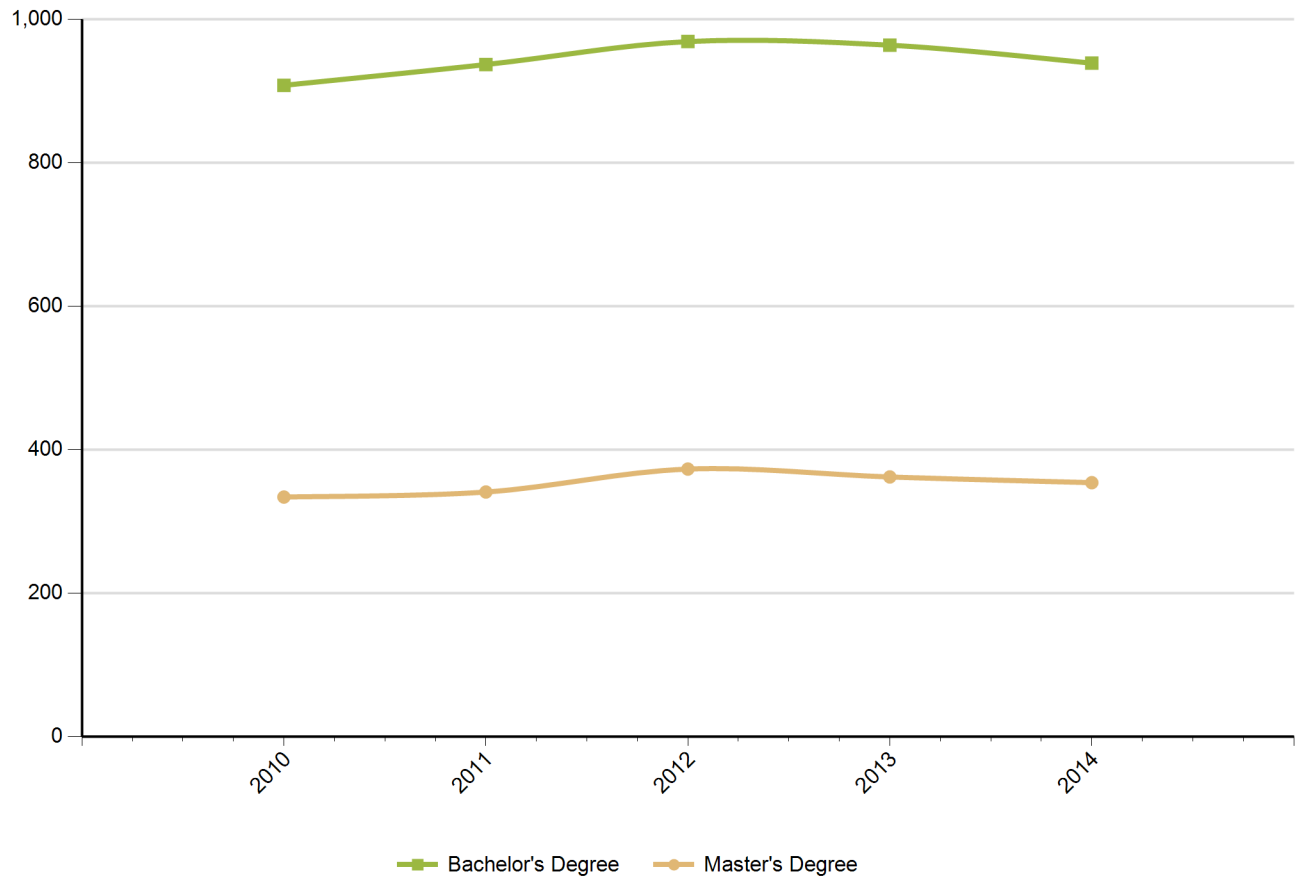
Source: US Census Bureau, Local Employment Dynamics - Q1 2014

Educational Attainment (Population 25 Years and Older)



Source: US Census Bureau, American Community Survey - 2013 5-Year Estimates

Graduate Trends



Source: Institute of Education Sciences (IES), Integrated Postsecondary Education Data System

Educational Institutions

Clinton College
1029 Crawford Rd
Rock Hill, SC 29730
803.327.7402
<http://www.clintonjuniorcollege.edu>
2014 Degrees Awarded: 31

Northeastern Technical College
1201 Chesterfield Hwy.
Cheraw, SC 29520
843.921.6900
<http://www.netc.edu>
2014 Degrees Awarded: 284

University of South Carolina-Lancaster
476 Hubbard Drive
Lancaster, SC 29720
803.313.7000
<http://usclancaster.sc.edu/>
2014 Degrees Awarded: 134

York Technical College
452 S Anderson Rd
Rock Hill, SC 29730
803.327.8000
<http://www.yorktech.edu>
2014 Degrees Awarded: 783

Kenneth Shuler School of Cosmetology-Rock Hill
2383 Cherry Road
Rock Hill, SC 29730
803.315.4904
<http://www.kennethshuler.com>
2014 Degrees Awarded: 44

Styletrends Barber and Hairstyling Academy
239 Hampton St
Rock Hill, SC 29730
803.328.0807
<http://www.styletrendsacademy.com>
2014 Degrees Awarded: 20

Winthrop University
701 Oakland Ave
Rock Hill, SC 29733
803.323.2211
<http://www.winthrop.edu>
2014 Degrees Awarded: 1297

Source: Institute of Education Sciences (IES), Integrated Postsecondary Education Data System