

South Carolina Department of Corrections Recidivism Rates of Inmates Released during FY2008 - FY2010			
	Year of Release		
	FY 2008	FY 2009	FY 2010
<b>Total Number of Releases</b>	<b>12,807</b>	<b>13,454</b>	<b>12,744</b>
<b>Percentage of Releasees who Returned to SCDC:</b>	Recidivism Rate by Year of Release		
	FY 2008	FY 2009	FY 2010
Within One Year or Less	12.3%	11.9%	9.9%
Within Two Years or Less	24.0%	22.8%	20.5%
Within Three Years or Less	30.6%	29.4%	27.5%
Comparison of 3-Year Recidivism Rates by Inmate Attributes			
Attributes	FY 2008	FY 2009	FY 2010
Overall Rate	30.6%	29.4%	27.5%
Gender			
Males	32.2%	30.7%	28.8%
Females	18.5%	20.0%	17.0%
Type of Release			
Maxout (Expiration of Sentence)	22.2%	20.8%	21.3%
Parole	25.2%	21.9%	19.3%
Probation	41.5%	43.2%	38.4%
Community Supervision	24.9%	21.6%	16.5%
Youthful Offender Act* - Parole	52.8%	50.0%	44.9%
Youthful Offender Act* - Maxout	29.7%	37.2%	34.6%
Age at Release			
Under 25 Years	43.2%	41.1%	37.9%
25-30 Years	29.2%	28.3%	27.7%
31-40 Years	28.2%	25.9%	24.7%
Over 40 Years	23.3%	23.5%	21.1%
Program Participation			
Pre-Release	25.0%	25.7%	23.0%
Work Program	23.4%	22.9%	21.8%
Labor Crew	23.3%	23.1%	21.1%
Labor Crew/Work Program	23.3%	23.2%	21.0%
Prison Industry	23.4%	19.7%	18.3%
Sentence Type			
Youthful Offender Act*	50.6%	49.0%	44.0%
Straight-time	27.5%	26.4%	25.0%
Criminal History **			
Had Conviction and/or Commitment	32.9%	31.4%	29.1%
Had Commitment	34.6%	32.9%	31.2%
No Known Priors	26.4%	25.7%	24.5%

\* Youthful Offender Act (YOA) inmates serve an indeterminate sentence of 1 to 6 years.

South Carolina Department of Corrections Profile of Inmates in Institutional Count (Including Inmates on Authorized Absence) as of June 30, 2013			
Characteristics	Male Population	Female Population	Total Population
<b>TOTAL Inmates Population</b>	<b>20,777</b>	<b>1,391</b>	<b>22,168</b>
	%	%	%
Current Age			
Average Current Age	36.6	37.8	36.7
21 & Under	6%	3%	6%
22-25	13%	10%	13%
26-35	33%	33%	33%
36-55	39%	49%	40%
56 and Over	8%	5%	8%
Average Age at Admission	31.2	34.1	31.4
Race			
Black	66%	40%	64%
White	32%	58%	33%
Other	3%	2%	3%
Citizenship			
Illegal Aliens	2%	1%	2%
Citizens	98%	99%	98%
Sentencing Data/Criminal History			
<b>Admission Type:</b>			
New	80%	88%	80%
Revocator	19%	11%	19%
Other	1%	0.3%	1%
With Current Violent Offense	64%	49%	63%
With Prior Criminal History	62%	45%	61%
With Prior Commitments	45%	29%	44%
Average Sentence Length in Years <sup>1</sup>	13.9	9.3	13.6
Average Time to Serve before Maxout <sup>2</sup>	5.9	4.0	5.8
Sentences One Year or Less (excl. YOA)	3%	9%	4%
Sentences More than 20 years (excl. lifers)	15%	9%	15%
With Life Sentence	10%	6%	10%
With YOA/Juvenile Sentence	4%	2%	4%
On Death Row	0.2%	0%	0.2%
Non-Parolable (includes TIS inmates)	52%	39%	51%
TIS Sentences	51%	39%	50%
Special Needs			
With Children <sup>3</sup>	65%	79%	66%
With Convicted Disciplinaries in Last 12 Months	36%	18%	35%
With Victim Witness Indicator	60%	51%	60%
Sex Registry	16%	3%	15%
Required DNA Testing	98%	93%	98%
Chemical Dependent per SASSI/TCUDDS <sup>4</sup>	37%	54%	38%
Education/Work			
Average Education Level at Intake	10.5	11.0	10.5
Without HS/GED	55%	45%	55%
Leading Most Serious Offense <sup>5</sup>			
	Dang. Drugs 17%	Homicide 19%	Dang. Drugs 17%
	Homicide 17%	Dang. Drugs 17%	Homicide 17%
	Burglary 16%	Larceny 10%	Burglary 16%
	Robbery 14%	Burglary 9%	Robbery 13%
	Assault 8%	Robbery 8%	Assault 7%
Top Five Committing Counties			
	Spartanburg 10%	Spartanburg 12%	Spartanburg 10%
	Greenville 9%	Greenville 11%	Greenville 9%
	Richland 8%	Horry 8%	Richland 8%
	Charleston 8%	Lexington 6%	Charleston 7%
	Horry 6%	Richland 6%	Horry 6%
Mental Health Classification:			
No Mental Health Problem	87%	65%	85%
Mentally Retarded	0.1%	0.1%	0.1%
Mentally Ill	12%	32%	14%
Not Available/Unknown	1.0%	2.7%	1.1%

<sup>1</sup> Excludes Lifers, Death-Row & YOA's

<sup>2</sup> Include inmates to be released to Community Supervision under Truth-in-Sentencing, excludes Lifers, Death-Row and YOA's

<sup>3</sup> Based on inmate self-reported information at intake

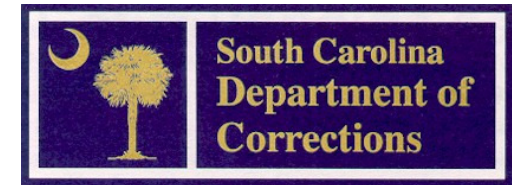
<sup>4</sup> Substance Abuse Subtle Screening Inventory (SASSI) stopped being used in January 1997. Currently Texas Christian University Drug Dependency Screen (TCUDDS) is used.

<sup>5</sup> To facilitate statistical reporting, SCDC determines a single "most serious offense" (MSO) for each inmate. Because of a definitional change, post-2005 MSO data cannot be compared to pre-2005 MSO data.

Note: Percentages may not add up due to rounding.

# THE SOUTH CAROLINA DEPARTMENT OF CORRECTIONS

BRYAN P. STIRLING  
DIRECTOR



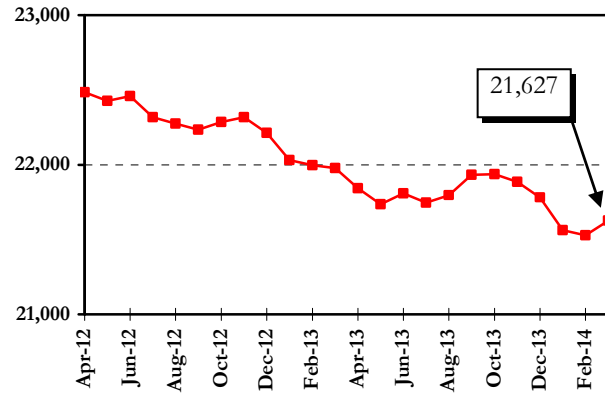
## SCDC FAQs APRIL 2014

For further information, contact:  
South Carolina Department of Corrections  
Resource and Information Management  
4444 Broad River Road  
Columbia, SC 29210  
(803) 896-8526

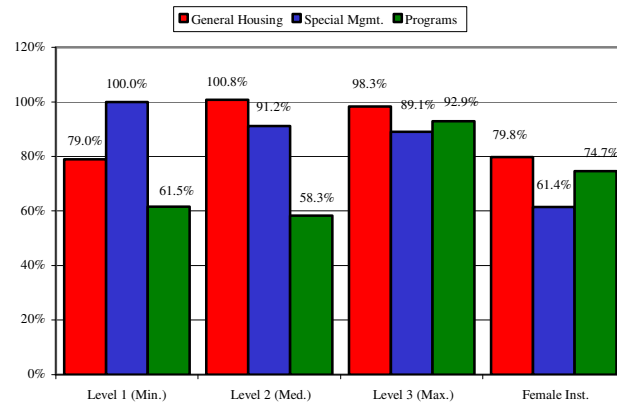
This document is available in alternative formats by contacting the number above.

This report contains preliminary statistics.  
Changes/updates will be posted on the SCDC website  
[www.doc.sc.gov](http://www.doc.sc.gov).

### SCDC Average Daily Facility Count per Month April 2012 – March 2014



### SCDC Count and Capacity as of March 15, 2014



Average Daily Inmate Population Fiscal Year 2007 - 2013					
Fiscal Year	SCDC Facilities	Other <sup>1</sup>	SCDC Jurisdiction	Change over Last Year	% Change over Last Year
2007	23,375	763	24,138	452	1.9%
2008	23,889	748	24,637	499	2.1%
2009	24,017	717	24,734	97	0.4%
2010	24,040	670	24,710	-24	-0.1%
2011	23,293	646	23,939	-771	-3.1%
2012	22,711	623	23,334	-605	-2.5%
2013	22,088	592	22,680	-654	-2.8%

<sup>1</sup> Other Placements = Special Placements + Designated Facilities

### Admissions to SCDC Fiscal Years 2011 - 2013

ADMISSIONS	FY 2011		FY 2012		FY 2013	
	#	%	#	%	#	%
<b>NEW ADMISSIONS FROM COURT</b>	<b>8,250</b>	<b>75.8%</b>	<b>7,966</b>	<b>78.3%</b>	<b>7,785</b>	<b>81.40%</b>
Indeterminate Sentence (YOYA)*	725	6.7%	646	6.4%	625	6.50%
Straight Sentence (Non-YOYA)	7,489	68.8%	7,280	71.6%	7,121	74.40%
Other Jurisdiction	36	0.3%	40	0.4%	39	0.40%
<b>PROBATION REVOCATIONS***</b>	<b>1,497</b>	<b>13.7%</b>	<b>1,213</b>	<b>11.9%</b>	<b>1,008</b>	<b>10.50%</b>
<b>PAROLE REVOCATIONS</b>	<b>835</b>	<b>7.7%</b>	<b>746</b>	<b>7.3%</b>	<b>638</b>	<b>6.70%</b>
Youthful Offender Act (YOYA)	510	4.7%	413	4.1%	298	3.10%
NON-YOYA	325	3.0%	333	3.3%	340	3.60%
<b>SF/EPA REVOCATIONS</b>	<b>28</b>	<b>0.3%</b>	<b>9</b>	<b>0.1%</b>	<b>9</b>	<b>0.10%</b>
<b>COMMUNITY SUPV. REVOCATIONS</b>	<b>215</b>	<b>2.0%</b>	<b>192</b>	<b>1.9%</b>	<b>109</b>	<b>1.10%</b>
RE-SENTENCED	62	0.6%	41	0.4%	19	0.20%
DEATH ROW	1	0.0%	0	0.0%	0	0.00%
OTHER **	0	0.0%	3	0.0%	1	0.00%
<b>TOTAL ADMISSIONS</b>	<b>10,888</b>	<b>100.0%</b>	<b>10,170</b>	<b>100.0%</b>	<b>9,569</b>	<b>100.00%</b>

\* The Youthful Offender Act provides for indeterminate sentences of 1 - 6 years for offenders aged 17 - 25.

\*\* These inmates include appeal bond denied, ICC, and other state inmates.

\*\*\* Includes only those inmates released to probation from SCDC.

### Most Serious Offense of SCDC Admissions Fiscal Years 2011 - 2013

OFFENSE CLASSIFICATION	FY 2011	FY 2012	FY 2013
DANGEROUS DRUGS	18.8%	18.4%	19.3%
BURGLARY	16.0%	16.3%	16.7%
ASSAULT	10.0%	8.9%	8.6%
LARCENY	7.2%	7.8%	8.7%
TRAFFIC OFFENSE	7.5%	7.6%	6.9%
ROBBERY	6.5%	6.5%	6.2%
FAMILY OFFENSE	5.2%	5.1%	5.2%
ALL OTHERS	28.8%	29.4%	28.4%
<b>TOTAL ADMISSIONS</b>	<b>10,888</b>	<b>10,170</b>	<b>9,569</b>

\* Highlighted areas indicate most common offenses for each fiscal year. Inmates often are committed to SCDC with many offenses, with each carrying a specific sentence, county of commitment, etc. To facilitate statistical reporting, SCDC determines a single "most serious offense" (MSO) for each inmate. Inmates' MSO is the offense with the highest severity level (i.e. offenses are classified between severity level 1 and 5, with 5 as the most severe).

### Average Sentence Length of SCDC Admissions Fiscal Years 2011 - 2013

	FY 2011	FY 2012	FY 2013
<b>Average Sentence Length</b>	<b>4 Yrs. 2 Mos.</b>	<b>4 Yrs. 0 Mos.</b>	<b>4 Yrs. 1 Mos.</b>

### Time Served by SCDC Inmates Released Fiscal Years 2011 - 2013

TIME SERVED	FY 2011		FY 2012		FY 2013	
	#	%	#	%	#	%
3 Months or Less	1,384	11.5%	1,203	10.5%	1,073	11.2%
3 Months 1 Day-6 Months	1,974	16.4%	1,892	16.6%	1,490	15.5%
6 Months 1 Day-9 Months	1,302	10.8%	1,271	11.1%	1,097	11.4%
9 Months 1 Day-1 Year	1,474	12.3%	1,406	12.3%	1,141	11.9%
1 Year 1 Day-5 Years	4,693	39.0%	4,426	38.8%	3,720	38.7%
5 Years 1 Day-10 Years	788	6.6%	820	7.2%	725	7.5%
10 Years 1 Day-15 Years	285	2.4%	277	2.4%	243	2.5%
15 Years 1 Day-20 Years	87	0.7%	71	0.6%	88	0.9%
20 Years 1 Day-25 Years	22	0.2%	25	0.2%	15	0.2%
25 Years 1 Day-30 Years	10	0.1%	12	0.1%	9	0.1%
Over 30 Years	5	0.04%	6	0.05%	22	0.2%
<b>TOTAL RELEASES</b>	<b>12,024</b>	<b>100.0%</b>	<b>11,409</b>	<b>100.0%</b>	<b>9,623</b>	<b>100.0%</b>
<b>Average Time Served</b>	<b>2 Years 0 Months</b>		<b>2 Years 1 Months</b>		<b>2 Years 2 Months</b>	

This average does not include inmates with life, death, yoia sentences and inmates released on paid fine, remanded appeal, court order, pardon, resentenced, or death.

### Releases from SCDC by Type Fiscal Years 2011 - 2013

RELEASES	FY 2011		FY 2012		FY 2013	
	#	%	#	%	#	%
EXPIRATION OF SENTENCE/ LESS GOOD TIME	6,111	50.8%	5,924	51.9%	4,751	49.4%
MAXOUT - YOYA	125	1.0%	123	1.1%	91	0.9%
PLACED ON PROBATION	2,448	20.4%	2,455	21.5%	2,132	22.2%
PAROLED BY YOYA PAROLE BOARD	1,387	11.5%	1,049	9.2%	879	9.1%
PAROLED BY DPPPS*	779	6.5%	547	4.8%	490	5.1%
RE-SENTENCED	57	0.5%	32	0.3%	16	0.2%
COMMUNITY SUPERVISION	1,026	8.5%	1,192	10.4%	1,111	11.5%
SUPERVISED RE-ENTRY	0	0.0%	0	0.0%	61	0.6%
DEATH	63	0.5%	61	0.5%	61	0.6%
DEATH-EXECUTED	1	0.0%	0	0.0%	0	0.0%
OTHER **	27	0.2%	26	0.2%	31	0.3%
<b>TOTAL RELEASES</b>	<b>12,024</b>	<b>100.0%</b>	<b>11,409</b>	<b>100.0%</b>	<b>9,623</b>	<b>100.00%</b>

\* Department of Probation, Parole, and Pardon Services.

\*\* These releases include court ordered, paid fine, appeal bond, pardon, remanded to county and released on furlough.

### South Carolina Department of Corrections Cost Per Inmate\* Fiscal Years 2008-2012

Fiscal Year	Based on State Funds Spent		Based on All Funds Spent***	
	Annual Cost Per Inmate	Daily Cost Per Inmate	Annual Cost Per Inmate	Daily Cost Per Inmate
2009	\$14,545	\$39.85	\$16,312	\$44.69
2010	\$14,445 **	\$39.58 **	\$15,963	\$43.73
2011	\$14,409 **	\$39.48 **	\$16,406	\$44.95
2012	\$15,316	\$41.85	\$17,343	\$47.38
2013	\$16,542	\$45.32	\$18,299	\$50.13

\* Calculation of the SCDC per inmate costs is based on the average number of inmates in SCDC facilities and a small number of authorized absences and does not include state inmates held in designated facilities, institutional diversionary programs, or other non-SCDC locations.

\*\* In FY 2010 and FY 2011 SCDC received \$22,000,000 and \$40,480,000, respectively, from funds distributed to the states via the American Recovery and Reinvestment Act (ARRA) of 2009. These funds are included in the State Fund figures shown above. The FY 2010 cost figures have been revised from previous postings.

\*\*\* State, Federal and Special Revenues (Excludes Permanent Improvement, Purchases for Resale, Canteen, Prison Industries, Improvement Enterprise Funds, and Interest and Principle Payments)