

# SCSL Digital Collections

## Edgefield, South Carolina

Item Type	Text
Publisher	South Carolina State Library
Rights	Copyright status undetermined. For more information contact, South Carolina State Library, 1500 Senate Street, Columbia, South Carolina 29201.
Download date	2024-10-06 00:17:53
Link to Item	<a href="http://hdl.handle.net/10827/212">http://hdl.handle.net/10827/212</a>

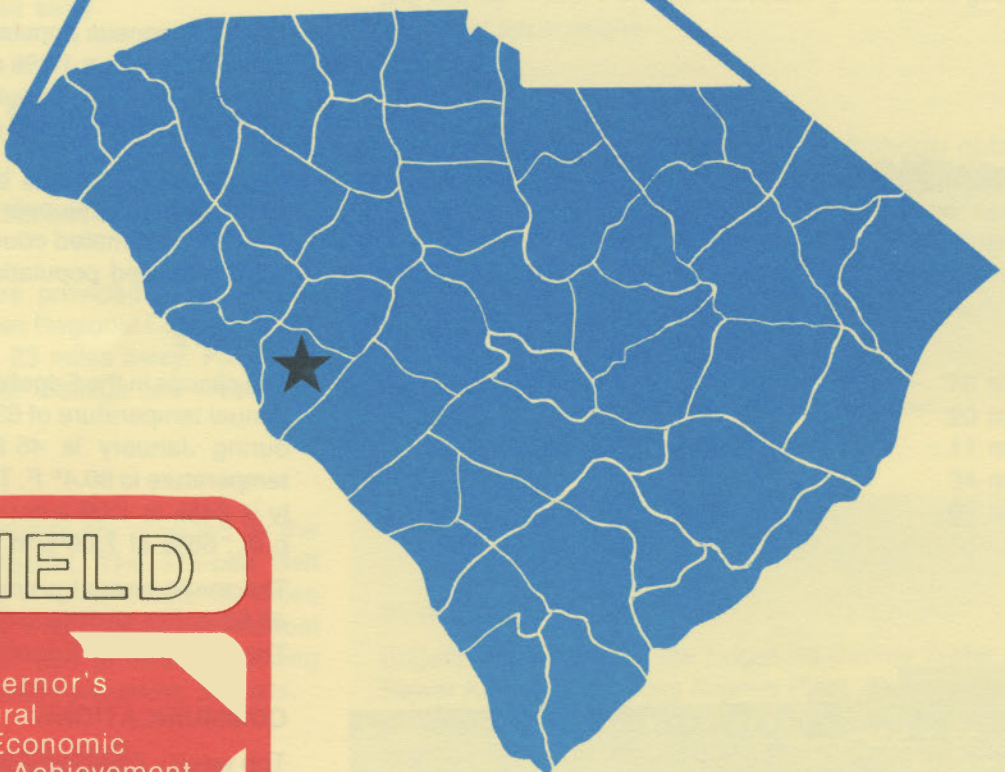
D4925  
2.E23  
1985  
Copy 1

# EDGEFIELD

# south carolina



S. C. STATE LIBRARY  
JAN 13 1986  
STATE DOCUMENTS



EDGEFIELD

IS  
A  
GREAT  
TOWN

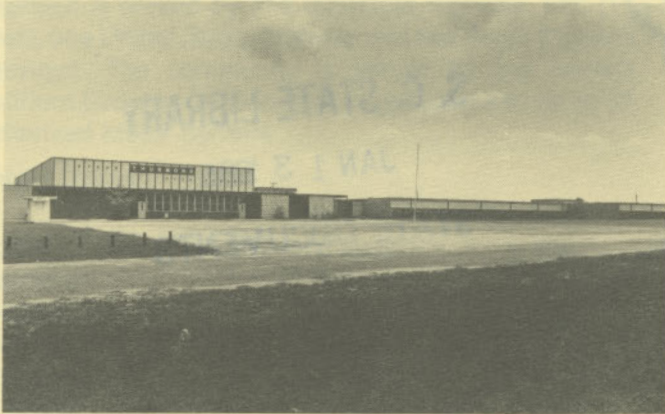
Governor's  
Rural  
Economic  
Achievement  
Trophy

A red outline of the state of South Carolina, with a black star in the western part, mirroring the location of the star on the blue map above.





Edgefield Municipal Building



Strom Thurmond High School



Pine Ridge Country Club



Carolina Production Enterprises

## LOCATION

As depicted on the cover, Edgefield, seat of Edgefield County, is in the western section of the state. Charleston, South Carolina's busiest port, is 148 miles southeast. Columbia is 57 miles east and Greenville is 86 miles north. Edgefield is 165 miles east of Atlanta; 749 miles south of New York; and 2,688 miles east of San Francisco.



## POPULATION

The 1980 census population of the city of Edgefield was 2,713. This was a 1.3% decrease from the 1970 population of 2,750. The population within a 15-mile radius is 32,739 and within a 30-mile radius is 318,891.

Edgefield County had a 1980 census population of 17,528, an 11.7% increase over the 1970 population of 15,692. The 1985 estimated county population is 18,400 and the 1990 projected population is 19,800.

## CLIMATE

The climate in the Edgefield area is temperate with a mean annual temperature of 63.4° F. The average temperature during January is 45.8° F, while the average July temperature is 80.4° F. The average relative humidity daily is 84% at 1:00 a.m.; 87% at 7:00 a.m.; 52% at 1:00 p.m.; 66% at 7:00 p.m.

The mean annual precipitation in the Edgefield area is 42.63 inches and the average growing season is 246 days. The elevation of Edgefield is 530 feet above sea level.

## COMMUNICATIONS

The weekly *Edgefield Advertiser* and the *Edgefield Citizen-News* are published in the community, and five dailies circulate in the area. Radio stations WJES-AM and WKSX-FM provide local broadcast coverage. Television reception in the community is available from six stations, representing the three major networks and educational television. Telephone service is provided by Southern Bell of BellSouth Corporation.



## GOVERNMENT

The community has a mayor-council form of municipal government. The six city council members and mayor are elected for four-year terms. Edgefield County is governed locally by a council-administrator form of government. The five council members are elected for two-year terms.

## POLICE AND FIRE

The Edgefield Police Department has six full-time police officers. The department operates four radio equipped patrol cars. The Edgefield Fire Department has 28 volunteer firemen who operate two pumper trucks. Edgefield's insurance rating is Class 6.

## FINANCIAL INSTITUTIONS

Edgefield has two banks and one savings and loan association to serve the financial needs of the community. The banks have total assets of \$6.3 billion, while the savings and loan has assets of \$323 million.

## HOTELS AND MOTELS

The community has three motels and one hotel with over 50 overnight accommodations. An inn, located in nearby Johnston, also serves the community.

## CHURCHES

Edgefield has six Protestant churches and one Catholic church located in the community. A Jewish synagogue is located in Augusta, 28 miles away.

## EDUCATION

Edgefield, which is included in Edgefield County Schools, has one elementary school. The student/teacher ratio is 16.9 to 1, with 1,050 students and 62 teachers. A high school is available in nearby Johnston and private schooling is available in the area.

Higher education facilities are provided by the Aiken Technical College and the Aiken Regional Campus of the University of South Carolina, 23 miles away. Piedmont Technical College and Lander College are located in Greenwood, 32 miles away.

## MEDICAL SERVICES

Medical services in the community are provided by the 40-bed Edgefield County Hospital. The 375-bed Self Memorial Hospital is located in Greenwood, 32 miles away. Augusta, 28 miles away, offers additional medical facilities. The community has nine privately-practicing medical doctors and five privately-practicing dentists.

## RECREATION AND CIVIC FACILITIES

Recreation facilities in the community consist of two youth centers, a swimming pool, and several tennis courts. The Pine Ridge Country Club, four miles away, has an 18-hole championship golf course, pool, tennis courts and fishing lakes. Nearby Clarks Hill Reservoir and several public recreation areas offer camping, fishing, boating, swim-

ming and picnic facilities. The Sumter National Forest provides a wide variety of wild game and fowl for hunters, as well as areas for camping, swimming, picnicking and fishing.

## POWER

Electric power is available to the community and surrounding areas from South Carolina Electric & Gas Company and Aiken Electric Cooperative. During 1985, SCE&G projects a system reserve of 38.2% with an existing generating capacity of 3,959 megawatts. SCE&G is committed to having sufficient reserves to meet the immediate and future energy requirements of its service area. Being a major exporter of electric power, SCE&G maintains inter-tie connections with five neighboring utilities.

Electric power for Aiken Electric Cooperative is supplied by Central Electric Power Cooperative and South Carolina Public Service Authority. The generation capacity of plants in operation or under construction totals over 3,200 megawatts with approximately 73% produced from coal. Interconnections are maintained with all neighboring power suppliers. Sufficient reserves are available to meet immediate and future industrial power requirements. Economic Development Incentive Rates are available for qualifying industries.

## FUELS

Natural gas is supplied by South Carolina Electric & Gas Company. SCE&G representatives are available to assist and advise industry on matters relating to natural gas for industrial applications.

## WATER

The Edgefield County Water & Sewer Authority obtains the water supply from the Savannah River. Capacity of the system is 4.0 million gallons per day and usage averages 1.25 million gallons per day. Treated water storage consists of 1.2 million gallons in elevated storage, and 1.3 million gallons in ground storage.

Analysis of water supplied in the community:

Total solids	76 mg/L
Alkalinity	20 mg/L
Calcium	11 mg/L
Hardness	34 mg/L
Iron	.07 mg/L
pH	7.3

## SEWER

Edgefield is served by the Edgefield County Water and Sewer Authority's Brooks Avenue Plant. The plant has a maximum capacity of 400,000 gallons per day and an average daily flow of 385,000 gallons. Construction will begin in early 1987 to upgrade the Brooks Avenue Plant to 725,000 gallons per day.

## LABOR

Because labor information may change in this area, a current labor availability report prepared and kept up to date

SOUTH CAROLINA STATE LIBRARY



0 01 01 0037334 8



by the S. C. State Development Board will be furnished to prospective manufacturers at their request. The comprehensive report will include sources of recruitable labor, labor force characteristics, work force skill levels, earnings data and other pertinent information. The S. C. State Board for Technical and Comprehensive Education has the resources to recruit and train workers in accordance with a company's entry criteria. This training is at little or no cost to the employer. A lead-time schedule is developed to coordinate recruiting, testing, selecting, and training. This assures that persons will be able to move from training to their respective jobs at the time the plant is ready for initial production.

## TRANSPORTATION

Edgefield is served by one interstate highway, I-20 (15 miles), one United States highway and two South Carolina highways. The community is served by the Norfolk Southern Railroad Corporation. Edgefield is served by 37 authorized motor carriers.

### Freight Delivery Times:

To:	By Rail:	By Truck:
Atlanta	2 days	1 day
Baltimore	3 days	3 days
Chicago	4 days	3 days
Houston	6 days	3 days
New York	4 days	4 days
St. Louis	4 days	4 days
San Francisco	6 days	5 days

The Columbia Metropolitan Airport, 50 miles from the community, offers regularly scheduled commercial airline service on American, Delta, Eastern, Bankair, Piedmont, PEOPLExpress and United. Delta, Atlantic Southeast, Piedmont and Atlantis service Augusta, 28 miles from Edgefield. Private aircraft utilize the Aiken Municipal Airport, 23 miles away, which has a 5,000-foot lighted and paved runway and a 3,800-foot paved runway. Services

offered include RBn, major airframe and major powerplant repairs, 100LL and Jet A fuel, Unicom and Vortac.

## FOREIGN TRADE ZONE

A Foreign Trade Zone is located in Summerville, South Carolina, 25 miles from the Port of Charleston and 123 miles from the community. The Foreign Trade Zone allows manufacturers to store, manufacture, or process goods without paying U.S. Customs duties or worrying about quota compliance. This Foreign Trade Zone is served by a multimode transportation network which provides excellent accessibility to market areas.

## TAXES

The assessment on industrial property in South Carolina is 10.5% of the market value. New industry is granted a five-year moratorium on general county taxes (with the exception of school taxes). The city tax rate is \$8.00 per \$100 of assessed value. The county rate is \$11.99 per \$100 of assessed value. The effective city tax rate (tax liability per \$100 of market value) is \$.84. The effective county rate is \$1.26. The state has no tax on a manufacturer's inventories, goods-in-process, raw materials or finished goods. Treatment facilities or equipment of manufacturing plants which control water or air pollution are exempt from all property taxation.

## INDUSTRIAL SITES

Industrial sites are available in Edgefield with a wide range of geographic and topographic features. In all probability, a site that will meet the needs of most industries' requirements has been identified, catalogued, and entered into the State Development Board's Computerized Site Selection System. Detailed site information is available and will be furnished upon request.

## MAJOR EMPLOYERS

### Name

Carolina Production Enterprises  
 The Crest Mfg. Co.  
 Royal Yarns, Inc.  
 Star Fibers, Inc.  
 Tranter Mfg. Co. — Flexoplate Div.

### Product or Service

Electric heaters 104  
 Auto accessories 110  
 Combed cotton yarns 150  
 Processed man-made fibers 209  
 Cooling radiators for transformers 125

### Employees

For Additional Information Contact:

SOUTH CAROLINA STATE DEVELOPMENT BOARD  
 P. O. Box 927, Columbia, South Carolina 29202  
 (803) 758-3145